

PERSONAL NAVIGATOR



WEDNESDAY, DECEMBER 2, 2015

Sunrise: 6:45 am Sunset: 5:21 pm
 Evening Attire: Pirate or Cruise Casual
 All Ashore: 8:30 am All Aboard: 4:45 pm
 Gangway: Deck 1, Midship/Deck 1, Aft &
 Today: Partly Cloudy High: 78°F/26°C
 Tomorrow: Partly Cloudy High: 78°F/26°C

DISNEY'S CASTAWAY CAY

Disney · PIXAR THE GOOD DINOSAUR

DOLBY 3D

WALT DISNEY THEATRE
 DECK 3 & 4, FORWARD

5:45 pm & 8:30 pm

As a courtesy to all Guests, we kindly advise that the saving of seats is **not** permitted in the Walt Disney Theatre.

Assistance available at the entrance to the Walt Disney Theatre 30 minutes prior to show time.



Disney's Castaway Cay

Reserved exclusively for Guests on Disney Cruise Line Bahamian and Caribbean cruise vacations, Castaway Cay is Disney's private port-of-call paradise. On this island, enjoy tropical leisure activities, such as snorkeling, boating, swimming and sunbathing.

Friendly Reminders

- Serenity Bay is reserved for Guests 18 and older.
- Your Key To The World Card will need to be used for all transactions on Disney's Castaway Cay except for the Post Office.
- A limited number of all-terrain wheelchairs are available across from Scuttle's Cove.
- For your convenience, beach towels are available as you leave the ship; please return them at the gangway at the end of your day.
- Due to our commitment to the environment, we ask that seashells, coral and other natural treasures be left undisturbed at Disney's Castaway Cay for all to enjoy.

Did you know?

AquaDuck water coaster evolved from the idea of having a "lazy river" experience on the perimeter of the main "sundeck."

It's a Pirate Celebration, me hearties! Come experience all the pirate fun alongside Captain Mickey Mouse and his famous pirate crew. (Weather Permitting)
7:45 pm - 8:05 pm
Deck 11 & 12, Midship marks the spot

Buccaneer Blast Fireworks
10:30 pm
Deck 11 & 12, Midship marks the spot (Weather Permitting)

Don't Miss:

Good Morning Disney Dream

Tune in to channel 8 as your Cruise Director highlights the upcoming events, activities and port information for the day.

runDisney: Castaway Cay 5K (10+)

Evolution, Deck 4, Aft - 8:15 am

Runners (10+) meet together on the ship. We will depart the ship shortly thereafter, and make our way to the Bike Rentals where the run will begin.

Crab Races

Island Gazebo 1, Disney's Castaway Cay - 11:45 am

Island Gazebo 2, Disney's Castaway Cay - 12:45 pm

Watch some local sea creatures make a break for the finish line.

Art of The Theme Show Tour (18+)

Meridian, Deck 12, Aft - 2:30 pm

Join us for a guided tour highlighting the design, Imagineering and artistry of the Disney Dream. This tour is reserved for Guests 18 and over.



Visit Shutters for all your photographic needs, from digital cameras, batteries, binoculars and accessories. All photos taken during this cruise will be available for viewing on our photo kiosks at Shutters, as well as in your photo folder at Shutters, Deck 4, Midship.

DINNER MENU

Animator's Palate: Pirate's Menu
 Enchanted Garden: Pirate's Menu
 Royal Palace: Pirate's Menu

DRINK OF THE DAY

Paradise Punch (Alcoholic)
 Coco Bali (Non Alcoholic)

IMPORTANT NUMBERS

Fire/Security	7-3001
Medical Emergency	7-3000
Health Center	7-1923

ADULT ACTIVITY HIGHLIGHTS

SENSES SPA FITNESS CLASSES & SEMINARS

Wake Up & Stretch Class - Senses Fitness Center - 7:00 am
Fab Abs - Senses Fitness Center - 7:30 am
Body Sculpt Boot Camp (Nom. Fee) - Senses Fitness Center - 8:00 am
Yoga on the Beach - Serenity Bay - 10:30 am
Secrets to a Flatter Stomach - Senses Spa & Salon - 3:00 pm
Acupuncture For Weight Loss - Senses Spa & Salon - 4:00 pm
Good Feet Seminar: Walking In Comfort - Senses Spa & Salon - 4:30 pm
Pure Form Pilates - Senses Fitness Center - 5:00 pm



TASTING CLASSES

Beer Tasting (21+) - Pub 687 - 3:30 pm

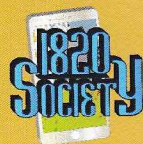
Cognac Tasting (21+) - Cove Cafe - 9:30 pm

Please make reservations for tastings at Guest Services for a nominal fee. Tasting Seminars are only for Guests 21 and older.

1820 SOCIETY: ISLAND BIKE RIDE

Bike Rentals, Disney's Castaway Cay - 10:45 am

Join your Cruise Staff team as they take you on a bike riding adventure around the island. Meet at the Bike Rentals where the fun will begin!



1820 SOCIETY: BASKETBALL FREE THROW

In Da Shade Game Pavilion, Disney's Castaway Cay - 1:00 pm

Join your Cruise Staff in this fun tournament and see how many you can sink in 30 seconds!

1820 SOCIETY: MINI GOLF

Goofy Golf, Deck 13, Aft - 4:45 pm

Can you get a hole in one? Give it a try with some mini golf.

1820 SOCIETY: GAME CHALLENGE

Cove Cafe, Deck 11, Forward - 10:00 pm

Join us and play some of your favorite board games.

KRAZY KARAOKE

Evolution, Deck 4, Aft - 11:00 pm

Take to the stage, grab a microphone and sing your favorite tunes with your Club Host and DJ.

FUN FOR ALL AGES HIGHLIGHTS

RUNDISNEY: CASTAWAY CAY 5K (10+)

Evolution, Deck 4, Aft - 8:15 am

Runners (10+) meet together on the ship. We will depart the ship shortly thereafter, and make our way to the Bike Rentals where the run will begin.



ISLAND POWER WALK

Post Office, Disney's Castaway Cay - 9:30 am

Join your Cruise Staff for a brisk walk around the island. Walk will begin 15 minutes after the scheduled meet time.

CRAB RACES

Island Gazebo 1, Disney's Castaway Cay - 11:45 am

Island Gazebo 2, Disney's Castaway Cay - 12:45 pm

Watch some local sea creatures make a break for the finish line.

DISNEY ANIMATION: CREATING A CHARACTER

D Lounge, Deck 4, Midship - 3:00 pm

Go behind the scenes at Walt Disney Animation Studios as Walt Disney himself talks about his most famous characters, then learn the basic techniques of drawing your favorite pals in this fun and interesting enrichment program.



DISNEY TRIVIA

District Lounge, Deck 4, Aft - 3:30 pm

Navigate your way through a round of questions to test how much you really know about Disney.

DISNEY VACATION CLUB GROUP PREVIEW

D Lounge, Deck 4, Midship - 4:15 pm

Want to learn more about taking magical vacations year after year? Please see a Disney Vacation Club representative on Deck 4, Midship, or call 7-2805 from your stateroom phone for more information about our interactive group presentation.



DOUBLE UP JACKPOT BINGO

Bingo Pre-Sales start at 4:15 pm

Evolution, Deck 4, Aft - 4:30 pm

Special double up session: All electronic cards purchased will be doubled! The snowball jackpot continues to grow and could be won today! Pre-Sales start 15 minutes prior to the game.



A PIRATE'S LIFE FOR ME

D Lounge, Deck 4, Midship - 6:30 pm & 9:45 pm

Calling all Pirates, we be! If ye have an adventurous spirit or pirate savvy, come spin the "Wheel of Destiny" for a treasure trove of fun be ripe for the takin' in this action packed pirate game show.



YOUTH ACTIVITIES HIGHLIGHTS

Dine & Play

A convenience for families dining at 8:15 pm, our Youth Activities counselors will be available at 9:15 pm at the entrance of Royal Palace, Enchanted Garden and Animator's Palate dining rooms to bring registered children to join the fun in the Youth Activities areas.



Deck 5, Midship (7-1440)
(3 - 12 years old)

5:00 pm - 10:30 pm

CRUISIN' WITH CRUSH

5:00 pm

Be sure to check out Disney's Oceaneer Club to see Crush when he stops by!

MAGIC PLAYFLOOR

7:00 pm

Explore the latest technology of the Disney's Oceaneer Club Magic PlayFloor.



Deck 5, Midship (7-1445)
(3 - 12 years old)

3:30 pm - 1:00 am

PIRATES OF THE CARIBBEAN: TIDES OF FORTUNE

4:45 pm

Inspired from the Pirates of the Caribbean saga, during this interactive computer game, cruisers in the Disney's Oceaneer Lab get a chance to sail the seven seas!

A PIRATE'S LIFE FOR ME

6:30 pm

Yo ho, yo ho, a Pirate's Life for Me! Aarrgh me mateys! Put your knowledge to the test!



Deck 13, Midship (7-9743)
(11 - 14 years old)

4:00 pm - 1:00 am

GENDER WARS

5:00 pm

Join us as we find out who really are the kings or queens of the castle.

TRIVIA CHALLENGE

8:30 pm

Hope you've been studying - it's trivia time! Who will be the first to answer correctly and be ultimate trivia challenge winner?



Entrance on Deck 4, Forward (7-9417)
(14 - 17 years old)

5:00 pm - 2:00 am

BRING IT!

9:45 pm

How much do you think you know? Test your knowledge in this Music Challenge, where you will be pitted head to head.

DECK PARTY

10:30 pm

Head up to the open deck for dancing and fun with your counselors.

MICKEY'S
PIRATES



in the
CARIBBEAN

7:45 pm - 8:05 pm

Pirate Games start at 7:30 pm
Deck Stage, Deck 11, Midship

It's a Pirate Celebration, me hearties!
Come experience all the pirate fun alongside Captain Mickey Mouse and his famous pirate crew.
(Weather Permitting)



Buccaneer Blast Fireworks

What's a pirate party without some fireworks to remind the other ships who be ruling the oceans blue?

10:30 pm

Deck 11 & 12, Midship
mark the spot

Fireworks will be on display Starboard side
Seen best from Deck 11, center pool area, and on Deck 12.

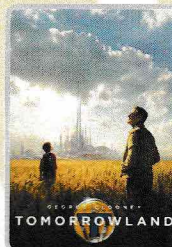
Club Pirate

If ye be a fan of Pirates of the Caribbean, tis time to revel in the night at the hottest dance club in all the seven seas.
(Immediately following Buccaneer Blast)



BUENA VISTA THEATRE

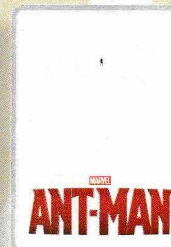
Deck 4 & 5, Midship
Today's Movies



9:00 am
Duration:
2 hrs 10 mins
Rating: PG

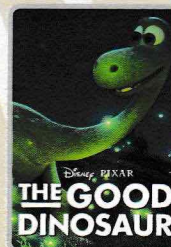


12:00 pm
Duration:
2 hrs 15 mins
Rating: PG-13

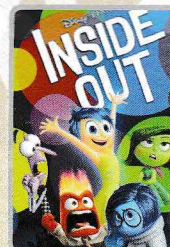


3:00 pm
Duration:
1 hr 57 mins
Rating: PG-13

DOLBY 3D



5:45 pm & 8:30 pm
Duration: 1 hr 40 mins
Rating: PG



11:00 pm
Duration: 1 hr 42 mins
Rating: PG

MORE TO ENJOY WHILE ONBOARD

DISNEY PARKS VACATION SAVINGS

Keep the magic going! Let us help you create the perfect Walt Disney World® Resort or Disneyland® Resort vacation for your family. Visit the Disney Vacation Planning Center on Deck 4, Midship to find out how you can save while on board.

DISNEY VACATION CLUB® GROUP PREVIEW

Want to learn more about taking magical vacations year after year? Please see a Disney Vacation Club representative on Deck 4, Midship, or call 7-2805 from your stateroom phone for more information about our interactive group presentation.

FREE ON DEMAND TV

Watch Disney movies, Hollywood features, ABC shows, and even captioned content, plus much more "On Demand" for FREE in the comfort of your stateroom! Bookmark your movie and come back to watch it later. Press MENU on your stateroom television remote control and follow the prompts.



IONITHERMIE SLIMMING & DETOX TREATMENT:

Lose 1-8 inches in one session!
Ionithermie firms and tones, reduces appearance of cellulite and fluid retention and enhances blood circulation and body's metabolism.

One 50 minute session for \$155.

Buy two services for \$299 and get the third service complimentary.

Senses Spa, Deck 11, Forward, Ext 7-1465.



Choose your alliance and gear up with fun new Star Wars merchandise designed exclusively for Disney Cruise Line.

**AVAILABLE ONBOARD!
DECK 3, FORWARD**

Shutters GET THE PICTURE

Ask your friendly Shutters staff about Our Cruise Photos! and the incredible value of a digital photo package, which includes all of your Stateroom's photos. Visit Shutters today, as supplies are limited.

**Terms and conditions apply. Photos captured on your vacation are only available for purchase during this cruise.

Disney CRUISE LINE. PORT ADVENTURES

Welcome to Disney's Island Paradise Castaway Cay! Today is the day to relax in an inner tube, snorkel in the Caribbean blue, get up-close and personal to real life stingrays or fly high in the sky on a parasail excursion during a breathtaking aerial adventure.

Visit Marge's Barges or one of the rental locations and our friendly team will assist in making any last minute bookings.

PORT ADVENTURES MEETING TIMES AND LOCATIONS

As per ticket	Castaway Ray's Stingray Adventure	Gil's Fins and Boats
As per ticket	Glass Bottom Boat	Marge's Barges
As per ticket	Castaway Cay Bottom Fishing	Marge's Barges
As per ticket	Seahorse Catamaran Snorkel	Marge's Barges
As per ticket	Nature Walk and Kayaking	As per ticket
As per ticket	Parasailing	Marge's Barges
9:00 am meet	Teen Wild Side	Vibe
As per ticket	Watercraft Ski Adventure	Boat Beach

DISNEY'S CASTAWAY CAY ISLAND RENTALS

Bicycles	8:30 am - 4:00 pm	Near Cookies Too
Boats	8:30 am - 4:00 pm	Boat Beach
Snorkeling Gear	8:30 am - 3:30 pm	Gil's Fins and Boats / Flippers and Floats
Float	8:30 am - 3:30 pm	Gil's Fins and Boats / Flippers and Floats
Getaway Package	8:30 am - 3:30 pm	Gil's Fins and Boats / Flippers and Floats

Reservations can be made on the island at each rental location.
Castaway Ray's walk up reservations can be made at Gil's Fins and Boats on Family Beach.

SHOPPING

DISNEY'S CASTAWAY CAY SHOPPING

While visiting Disney's Castaway Cay today, take the time to visit She Sells Seashells and Everything Else and Buy the Seashore where you can find Disney's Castaway Cay branded items such as casual and beach wear for the whole family. Here you can also gear up with any items you may need for fun in the sun such as towels, bathing suits, beach toys, and sunscreen.

RUNDISNEY CASTAWAY CAY 5K MERCHANDISE

If you're a runner participating in the runDisney Castaway Cay 5K, visit Buy the Seashore and commemorate your experience with runDisney Castaway Cay 5K specific merchandise such as the unique trading pin and apparel for the whole family!

INNOVATIVE DESIGNS BY CITIZEN WATCHES

It starts with a simple, yet revolutionary concept: a watch that never needs a battery. Citizen Eco-Drive technology harnesses the power of light from any natural or artificial light source and converts to energy. See the Collection of Men's and Ladies' watches available in White Caps, Deck 3, Forward.

LIGHT UP THE NIGHT

Glow merchandise is only available on Pirate Night! Don't miss your opportunity to light up the night! Stop by Quacks, Deck 11, Starboard to complete your Pirate attire!

THE DANISH DESIGN OF OBAKU WATCHES

OBABU watches embodies the fundamental Danish design elements of simplicity and functionality. Most importantly, Danish design is built to last. See the elegant OBAKU watch designs when you visit White Caps, Deck 3, Forward.

SHINOLA WATCHES

Available onboard at White Caps, Shinola watches are created using advanced technology with meticulous hand-assembly. Deck 3, Forward.

Due to port regulations, when the ship is docked, the stores will remain closed.

DD0502 12-02-2015 ©DISNEY

IMPORTANT INFORMATION

Security Notice

All Guests (including children) who wish to disembark the ship are required to present their Key to the World card at the gangway. A photo ID is also required for those Guests who are 18 years of age or older. Guests under the age of 18 are required to have a parent, guardian or other responsible adult sign an authorization form at the Guest Service Desk if they wish to go ashore unaccompanied or with any adult from another stateroom.

Inclement Weather

For the safety of all Guests, outdoor events may be changed due to unforeseen weather conditions.

Cold and Flu Reminder

Please wash hands frequently and thoroughly, particularly before meals. Contact the Health Center by dialing 7-1923, should anyone in your party become ill.

Corridor Quiet Hours

As a courtesy to all our Guests, please recognize quiet hallway hours from 10:00 pm - 8:00 am.

Sunscreen/Insect Repellent Advisory

Use sunscreen first and protect against mosquito bites and related illnesses by applying insect repellent on top of sunscreen when going ashore. Insect repellent is available for purchase in White Caps.

Environmental Message

With Disney's commitment to the environment, please refrain from throwing anything over the ship's side. Thank you!

No Reserved Seats Policy

As a courtesy to all our Guests, we kindly advise that the saving of seats is not permitted in the Walt Disney Theatre, and the saving of the sun loungers is not permitted on Deck 11, 12 and 13. Items left unattended will be returned to lost and found at Guest Services, Deck 3, Midship.

Smoking

For the comfort of our guests the following areas are designated as Smoking areas:

- Deck 13, Forward, port side, by "Currents"
- Deck 12, Aft, port side outdoor area that is accessible through the Meridian Lounge
- Deck 4, Aft, port side, the outside Promenade Deck from 6:00 pm to 6:00 am only (all of Deck 4 is no smoking from 6:00 am to 6:00 pm).
- Smoking is prohibited inside all Guest staterooms and on stateroom verandahs. Guests found smoking in their staterooms or on their verandahs will be charged a \$250 stateroom recovery fee. Electronic cigarettes may only be used in designated smoking areas.

Walt Disney Theatre

Theatrical performances may use artificial fog, strobe lights, pyrotechnics and other special effects. For the safety of our performers and the comfort of those around you, the use of any photography, video recording devices or any electronic equipment is prohibited.

Verandah Safety

Please do not leave any combustible materials on your balcony when not present in your stateroom for safety reasons.

Morning	8:30	8:45	9:00	9:15	9:30	9:45	10:00	10:15	10:30	10:45	11:00	11:15	11:30	11:45	12:00	12:15	12:30	12:45	1:00	1:15	1:30			
FUNNEL VISION	The Emperor's New Groove (G) Funnel Vision						Hercules (G) Funnel Vision						The Lion King (G) Funnel Vision											
BUENA VISTA THEATRE	Tomorrowland (PG) Duration: 2 Hours 10 Minutes										Bridge of Spies (PG-13) Duration: 2 Hours 15 Minutes													
CHARACTERS	Chip & Dale Gangway		Captain Jack Sparrow Marge's Barges		Goofy Rustmore		Daisy Post Office		Jack Sparrow Marge's Barges		Goofy Scuttles Cove				Character Dance Party Island Gazebo 1				Mickey Monstro Point					
FUN FOR ALL AGES	Meet in Evolution at 8:15 am (Departs at 8:30 am)		Island Power Walk Post Office						Crab Races Island Gazebo 1						Crab Races Island Gazebo 2		Family Whale Dig Monstro Point							
ADULTS	Friends of Bill W. Outlook		Yoga on the Beach Serenity Bay						Basketball Free Throw In Da Shade						Cruise Staff DJ Island Gazebo 1		Basketball Free Throw In Da Shade		1820 Society: Basketball Free Throw In Da Shade					
							1820 Society: Bike Ride Bike Rentals						Live Music with The Dreamers Serenity Bay											
VIBE 14-17 YEARS OLD	Teen Wild Side Departs Vibe at 9:15 am						Hangin' at Teen Hideout										Lunch at Cookies Too							
EDGE 11-14 YEARS OLD							Invade Teen Hideout						Lunch at Cookies Too						Pelican Plunge					
SCUTTLE'S COVE	Sand Castle Fun						The Dig at Monstro's Point						Treasure Hunt						Lunch at Pop's Props					
OCEANEER LAB 3-12 YEARS OLD																			Youth Activities Open House					
OCEANEER CLUB 3-12 YEARS OLD																			Youth Activities Open House					

Afternoon	1:45	2:00	2:15	2:30	2:45	3:00	3:15	3:30	3:45	4:00	4:15	4:30	4:45	5:00	5:15	5:30	5:45	6:00	6:15	6:30	6:45							
FUNNEL VISION	Mickey's Once Upon A Christmas (G) Funnel Vision						Monsters, Inc. (G) Funnel Vision						Mulan (G) Funnel Vision															
BUENA VISTA THEATRE	Ant-Man (PG-13) Duration: 1 Hour 57 Minutes										The Good Dinosaur (PG) Duration: 1 Hour 40 Minutes																	
CHARACTERS					Santa Claus Lobby Atrium		Chip & Dale Gangway		Peter Pan Lobby Atrium (P)		Minnie Lobby Atrium (P)		Pirate Mickey Mouse Deck 4, Balcony		Daisy Lobby Atrium (S)													
					Stitch Gangway				Hook & Smee Preludes		Chip & Dale Preludes		Donald Lobby Atrium (S)		Hook & Smee Preludes													
FUN FOR ALL AGES	Cruise Staff DJ Island Gazebo 1		D Lounge						Bingo Pre-Sales		Evolution		Live Music with The Get Ups District Lounge		1HR 40 MIN		A Pirate's Life For Me D Lounge											
ADULTS	Live Music with The Dreamers Serenity Bay		Art of the Theme Show Tour Meridian		Secrets to a Flatter Stomach Senses Spa & Salon		Beer Tasting (21+) Pub 687		Acupuncture For Weight Loss Senses Spa & Salon		1820 Society: Mini Golf Goofy Golf		Cruisin' Solo Gathering Cove Cafe															
VIBE 14-17 YEARS OLD	Hangin' at Teen Hideout						AquaDuck Fun						Game Challenge						Flubber		Cards Tournament							
EDGE 11-14 YEARS OLD	Hangin' at In Da Shade						Sun Deck Fun						AquaDuck Fun						Gender Wars						Tween Choice		Video Game Challenge	
SCUTTLE'S COVE	Water Games		Capture the Flag				Scuttle's Cove Closes at 4:00 pm																					
OCEANEER LAB 3-12 YEARS OLD	Youth Activities Open House												Stitch's Adventure Squad		Pirates of the Caribbean								A Pirate's Life For Me					
OCEANEER CLUB 3-12 YEARS OLD													Youth Activities Open House		Cruisin' with Crush		Dinner						Padawan Mind Challenge					
													Once Upon a Time		Disney Infinity Challenge													

Evening	7:00	7:15	7:30	7:45	8:00	8:15	8:30	8:45	9:00	9:15	9:30	9:45	10:00	10:15	10:30	10:45	11:00	11:15	11:30	11:45	12:00			
FUNNEL VISION	Mickey's PITC Funnel Vision				Muppet Treasure Island (G) Funnel Vision						Buccaneer Blast & Club Pirate Funnel Vision						Pirates of the Caribbean 1 Funnel Vision							
BUENA VISTA THEATRE	The Good Dinosaur (PG) Duration: 1 Hour 40 Minutes										Inside Out (PG) DOLBY 3D Duration: 1 Hour 42 Minutes													
CHARACTERS	Jack Sparrow D Lounge		Deck Stage, Deck 11, Midship						Stitch Preludes		Donald Lobby Atrium (P)		Hook & Smee Preludes											
FUN FOR ALL AGES	Deck Stage, Deck 11, Midship		1HR 40 MIN		D Lounge				Deck Stage, Deck 11, Midship															
	Live Violin with Ievgeniia Lobby Atrium				Live Music with The Dreamers Lobby Atrium																			
ADULTS	Pirate Trivia District Lounge		NBA Basketball: New Orleans Pelicans vs. Houston Rockets Pub 687 (Subject to Satellite Reception and Availability)				Live Violin Pink Wine and Champagne Bar				1820 Society: Game Challenge Cove Cafe				Evolution				Cruise Staff DJ District Lounge					
VIBE 14-17 YEARS OLD	Card Tournament	Smoothie Time	Disney Animation: Creating a Character				Teen Choice				Anyone Can Cook: Cupcakes				Bring It!				Deck Party					
EDGE 11-14 YEARS OLD	Video Game Challenge	Gender Wars					Trivia Challenge				Tween Choice				Pirate Prep				Deck Party					
OCEANEER LAB 3-12 YEARS OLD	Anyone Can Cook				Magic PlayFloor				Get the Hook				Playmation				Pirates of the Caribbean				GAGA Ball			
					Pirate Prep																			
OCEANEER CLUB 3-12 YEARS OLD	Magic PlayFloor		Star Wars Galaxy Designers		So You Want to be a Pirate?				Disney Infinity Archery Challenge															

Symbol for activities that will be repeated during the cruise



FOLD

Fold along the dotted lines and take me with you so you don't miss any of the fun!

FOLD

IN THE SPOTLIGHT SERIES
SOLVE IT! SERIES

JUMP UP! SERIES
CREATE & INVENT SERIES
OPEN HOUSE

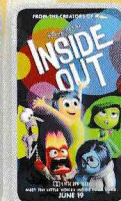
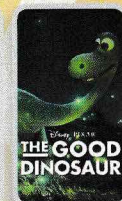
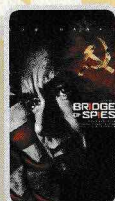
CLUBHOUSE SERIES
STORYBOOK SERIES

WEDNESDAY, DECEMBER 2, 2015 - DISNEY'S CASTAWAY CAY

BUENA VISTA THEATRE

Deck 4 & 5, Midship

DOLBY 3D



9:00 am
Duration:
2 hrs 10 mins
Rating: PG

12:00 pm
Duration:
2 hrs 15 mins
Rating: PG-13

3:00 pm
Duration:
1 hr 57 mins
Rating: PG-13

5:45 pm &
8:30 pm
Duration:
1 hr 40 mins
Rating: PG

11:00 pm
Duration:
1 hr 42 mins
Rating: PG

Character Appearances

CHIP & DALE
Gangway
9:15 am, 10:15 am & 3:30 pm

DAISY DUCK
Post Office -
9:15 am & 10:15 am

PLUTO
Mt. Rustmore - 9:30 am
Scuttle's Cove - 10:30 am

MICKEY MOUSE
Scuttle's Cove - 9:30 am
Mt. Rustmore - 10:30 am
Monstro Point - 1:15 pm

CAPTAIN JACK SPARROW
Marge's Barges
9:30 am & 10:45 am
D Lounge - 7:30 pm

STITCH
Gangway
9:45 am, 10:45 am & 3:00 pm

DONALD DUCK
Post Office
9:45 am & 10:45 am

GOOFY
Mt. Rustmore - 10:00 am
Scuttle's Cove - 11:00 am

MINNIE MOUSE
Scuttle's Cove - 10:00 am
Mt. Rustmore - 11:00 am

CHARACTER DANCE PARTY
Island Gazebo 1 - 12:15 pm

SANTA CLAUS
Lobby Atrium - 3:15 pm

PETER PAN
Lobby Atrium (P) - 4:15 pm

CAPTAIN HOOK & MR SMEE
Preludes
4:30 pm, 5:30 pm & 10:00 pm

PIRATE MINNIE MOUSE
Lobby Atrium (P) - 5:00 pm

PIRATE CHIP & DALE
Preludes - 5:00 pm

PIRATE MICKEY MOUSE
Deck 4, Balcony
5:15 pm & 10:00 pm

PIRATE DONALD
Lobby Atrium (S) - 5:15 pm
Lobby Atrium (P) - 10:00 pm

PIRATE DAISY DUCK
Lobby Atrium (S) - 5:45 pm
Lobby Atrium (P) - 9:30 pm

MICKEY'S PIRATES
Deck 11 Stage - 7:45 pm

JAKE THE NEVERLAND PIRATE
Deck 4, Balcony - 9:30 pm

PIRATE STITCH
Preludes - 9:30 pm

(H) Hallway - (S) Starboard Side - (P) Port Side - (V) Vestibule
For details of daily Disney character appearances, refer to the character line on your Navigator Grid, or the digital character board in the Lobby Atrium.

YOUTH ACTIVITIES THEMED EXPERIENCES

CLUBHOUSE SERIES
focuses on movement and features content which appeals to younger children.

STORYBOOK SERIES
is designed with a strong connection to the Disney classic stories.

JUMP UP! SERIES
includes large group games & movement-oriented activities.

CREATE & INVENT SERIES
will have a tactile focus allowing children to create and admire their work.

OPEN HOUSE

activities for families, adults and children of all ages to enjoy together.

IN THE SPOTLIGHT SERIES
focuses on children's stage presence with lots of activities and enthusiasm.

SOLVE IT! SERIES
are less active, but will challenge children with problem/solutions-based activities.

SHIP DIRECTORY

YOUTH ACTIVITIES

DISNEY'S OCEANEER CLUB	DECK 5, MID	5:00 PM - 10:30 PM
DISNEY'S OCEANEER LAB	DECK 5, MID	3:30 PM - 1:00 AM
EDGE	DECK 13, MID	4:00 PM - 1:00 AM
SCUTTLE'S COVE	CASTAWAY CAY	9:00 AM - 4:00 PM
VIBE	DECK 4, FWD	5:00 PM - 2:00 AM
IT'S A SMALL WORLD NURSERY	DECK 5, MID	9:00 AM - 12:00 AM

POOLS & MORE

* Children under 12 must have adult supervision in pool areas.

AQUADUCK	DECK 12, AFT	10:00 AM - 8:30 PM
DONALD'S POOL	DECK 11, MID	10:00 AM - 6:00 PM
FUNNEL PUDDLE	DECK 12, FWD	8:00 AM - 6:00 PM
MICKEY'S POOL	DECK 11, MID	8:30 AM - 6:00 PM
MICKEY'S SLIDE	DECK 11, MID	12:30 PM - 6:00 PM
NEMO'S REEF	DECK 11, MID	10:00 AM - 6:00 PM
QUIET COVE POOL (18+)	DECK 11, FWD	8:00 AM - 10:00 PM
SATELLITE FALLS (18+)	DECK 13, FWD	8:00 AM - 8:00 PM

Complimentary pool vests are available for children to use in the pools onboard.
Located on the pool deck.

RECREATION

GOLF/SPORTS SIMULATOR	DECK 13, AFT	3:00 PM - 6:00 PM
GOOFY GOLF	DECK 13, AFT	8:00 AM - 8:30 PM
GOOFY'S SPORTS DECK	DECK 13, AFT	12:00 AM - 6:00 PM
MARGE'S BARGES	CASTAWAY CAY	
MIDSHIP DETECTIVE AGENCY	DECK 2 & 5, MID	8:00 AM - 11:00 PM
PORT ADVENTURES DESK	DECK 5, MID	
SENSES FITNESS CENTER (18+)	DECK 11, FWD	6:00 AM - 10:00 PM

GENERAL INFORMATION

BUENA VISTA THEATRE	DECK 4 & 5, MID	SHOWTIMES
DISNEY VACATION PLANNING CENTER	DECK 4, MID	8:30 AM - 10:00 AM 4:00 PM - 10:00 PM
GUEST SERVICES	DECK 3, MID	24 HOURS
HAIRBRAIDING	DECK 11, MID	5:30 PM - 10:00 PM
MEDICAL HEALTH CENTER	DECK 1, FWD	9:30 AM - 11:00 AM 4:30 PM - 7:00 PM
PORT & SHOPPING DESK	DECK 4, MID	
PRELUDES	DECK 3, FWD	5:30 PM - 9:00 PM
SENSES SPA AND SALON	DECK 11, FWD	8:00 AM - 10:00 PM
SHUTTERS PHOTO GALLERY	DECK 4, MID	5:30 PM - 10:30 PM
WALT DISNEY THEATRE	DECK 3 & 4, FWD	SHOWTIMES

SHOPPING

BIBBIDI BOBBIDI BOUTIQUE	DECK 5, MID	9:00 AM - 9:00 PM
MICKEY'S MAINSAIL	DECK 3, FWD	5:30 PM - 11:00 PM
SEA TREASURES	DECK 3, FWD	5:30 PM - 11:00 PM
QUACKS	DECK 11, MID	
VISTA GALLERY	DECK 4, MID	6:00 PM - 11:00 PM
WHITE CAPS	DECK 3, FWD	5:30 PM - 11:00 PM
WHOZITS & WHATZITS	DECK 11, MID	7:00 PM - 10:30 PM

DUE TO PORT REGULATIONS, WHEN THE SHIP IS DOCKED, THE STORES MUST REMAIN CLOSED.

DINNER MENU
 Animator's Palate: Pirate's Menu
 Enchanted Garden: Pirate's Menu
 Royal Palace: Pirate's Menu
 Dining Times: 5:45 pm & 8:15 pm

DRINK OF THE DAY
 Paradise Punch (Alcoholic)
 Coco Bali (Non Alcoholic)

WEATHER FORECAST
 Today: Partly Cloudy
 High: 78° F/26° C
 Tomorrow: Partly Cloudy
 High: 78° F/26° C

Evening Attire: Pirate or Cruise Casual

DINING & LOUNGES

BREAKFAST

CABANAS CONTINENTAL	DECK 11, AFT	7:00 AM - 7:30 AM
CABANAS	DECK 11, AFT	7:30 AM - 10:45 AM
ENCHANTED GARDEN	DECK 2, MID	8:00 AM - 10:30 AM
ROYAL PALACE	DECK 3, MID	8:00 AM - 9:30 AM

LUNCH

CABANAS	DECK 11, AFT	12:00 PM - 2:00 PM
COOKIES	CASTAWAY CAY	11:30 AM - 2:00 PM
COOKIES TOO	CASTAWAY CAY	11:30 AM - 2:00 PM
FILLMORE'S FAVORITES	DECK 11, MID	10:30 AM - 6:00 PM
LUIGI'S PIZZA	DECK 11, MID	10:30 AM - 6:00 PM
TOW MATER'S GRILL	DECK 11, MID	10:30 AM - 6:00 PM

DINNER

ANIMATOR'S PALATE	DECK 3, AFT	5:45 PM & 8:15 PM
CABANAS TABLE SERVICE	DECK 11, AFT	6:30 PM - 8:30 PM
ENCHANTED GARDEN	DECK 2, MID	5:45 PM & 8:15 PM
PALO (18+) (RESERVATIONS REQ. & NOM. FEE APPLIES)	DECK 12, AFT	6:00 PM - 8:30 PM
REMY (18+) (RESERVATIONS REQ. & NOM. FEE APPLIES)	DECK 12, AFT	6:00 PM - 8:30 PM
ROYAL PALACE	DECK 3, MID	5:45 PM & 8:15 PM
TOW MATER'S GRILL	DECK 11, MID	6:00 PM - 11:00 PM

LATE NIGHT SNACKS

CABANAS - PIRATE'S BUFFET	DECK 11, AFT	10:45 PM - 11:30 PM
LUIGI'S PIZZA	DECK 11, MID	9:30 PM - 12:30 AM

ADDED FEATURES

BEVERAGE STATION	DECK 11, MID	24 HOURS
EYE SCREAM	DECK 11, MID	10:30 AM - 12:30 AM
ROOM SERVICE	DIAL 0	24 HOURS
VANELLOPE'S SWEETS AND TREATS	DECK 11, AFT	1:30 PM - 11:30 PM

ENTERTAINMENT - LOUNGES - BARS

Adults must be 21 and older to consume alcoholic beverages.

BON VOYAGE	DECK 3, MID	3:00 PM - 11:00 PM
COVE BAR (18+)	DECK 11, FWD	10:00 AM - 11:00 PM
COVE CAFE (18+)	DECK 11, FWD	7:00 AM - 12:00 AM
CURRENTS (18+)	DECK 13, FWD	2:00 PM - 12:00 AM
D LOUNGE	DECK 4, MID	SHOWTIMES
DISTRICT LOUNGE (18+ AFTER 9:00 PM)	DECK 4, AFT	4:00 PM - 2:00 AM
EVOLUTION (18+)	DECK 4, AFT	9:30 PM - 12:00 AM
FROZONE TREATS	DECK 11, MID	1:00 PM - 11:00 PM
MERIDIAN (18+)	DECK 12, AFT	5:00 PM - 12:00 AM
OUTLOOK	DECK 14, MID	
PINK: WINE AND CHAMPAGNE BAR (18+)	DECK 4, AFT	5:00 PM - 12:00 AM
PUB 687 (18+ AFTER 9:00 PM)	DECK 4, AFT	5:00 PM - 12:00 AM
SENSES JUICE BAR	DECK 11, FWD	6:00 AM - 10:00 PM
SKYLINE (18+)	DECK 4, AFT	5:00 PM - 12:00 AM
VISTA CAFE	DECK 4, MID	7:00 AM - 11:00 PM
WAVES	DECK 12, AFT	2:00 PM - 8:00 PM

CASTAWAY CAY BARS

CONCHED OUT BAR	CASTAWAY CAY	9:30 AM - 4:00 PM
CASTAWAY AIR BAR	CASTAWAY CAY	9:30 AM - 3:30 PM
HEADS UP BAR	CASTAWAY CAY	9:30 AM - 3:30 PM
SAND BAR	CASTAWAY CAY	9:30 AM - 3:30 PM
SUMMERTIME FREEZE	CASTAWAY CAY	9:00 AM - 3:30 PM

Public Health Advisory: Consuming raw or under-cooked meats, poultry, seafood, shellfish, or eggs may increase your risk for food borne illness, especially if you have certain medical condition.

IMPORTANT NUMBERS

Fire/Security:	7-3001	All Ashore: Approx. 8:30 am
Medical Emergency:	7-3000	All Aboard: 4:45 pm
Health Center:	7-1923	