

# PERSONAL NAVIGATOR

SUNDAY, NOVEMBER 22, 2015

Sunrise: 6:35 am Sunset: 5:20 pm  
 Evening Attire: Optional Dress Up  
 All Ashore: 8:30 am All Aboard: 4:45 pm  
 Gangway: Deck 1, Midship/Deck 1, Aft  
 Today: Cloudy High: 78°F/26°C  
 Tomorrow: Partly Cloudy High: 76°F/24°C

DISNEY'S CASTAWAY CAY

## Disney's Believe

Genie from Aladdin and many of Disney's most beloved magic makers take a father on a magical journey to show him that anything is possible if you just believe.

WALT DISNEY THEATRE  
 DECK 3 & 4, FORWARD

6:15 pm & 8:30 pm

As a courtesy to all Guests, we kindly advise that the saving of seats is not permitted in the Walt Disney Theatre.

Assistance available at the entrance to the Walt Disney Theatre 30 minutes prior to show time.



## Disney's Castaway Cay

Reserved exclusively for Guests on Disney Cruise Line Bahamian and Caribbean cruise vacations, Castaway Cay is Disney's private port-of-call paradise. On this island, enjoy tropical leisure activities, such as snorkeling, boating, swimming and sunbathing.

### Friendly Reminders

- Serenity Bay is reserved for Guests 18 and older.
- Your Key To The World Card will need to be used for all transactions on Disney's Castaway Cay except for the Post Office.
- A limited number of all-terrain wheelchairs are available across from Scuttle's Cove.
- For your convenience, beach towels are available as you leave the ship; please return them at the gangway at the end of your day.
- Due to our commitment to the environment, we ask that seashells, coral and other natural treasures be left undisturbed at Disney's Castaway Cay for all to enjoy.

### Debark Talk Broadcast

Important information regarding disembarkation procedures for your journey home will be covered in this debarkation briefing. The broadcast will be shown continuously on channel 5 of your stateroom television for your convenience. Please place your luggage outside your stateroom between 8:30 - 10:30 pm.

Thank you in advance for completing your comment card.

## SEA YA' REAL SOON!

Mickey and Minnie along with the rest of the Walt Disney Characters invite you to join them in the ship's atrium for Sea Ya Real Soon. You won't want to miss this very special farewell presentation.

Lobby Atrium,  
 Deck 3, Midship,  
 10:15 pm

## Don't Miss:

### Cruise Director Morning Show

Tune in to channel 8 as your Cruise Director highlights the upcoming events, activities and port information for the day.

### Making of the Dream (18+)

*Evolution, Deck 4, Aft - 3:00 pm*

Explore the origins of Disney Cruise Line and the latest and greatest innovations conjured especially for the Disney Dream in this fascinating and entertaining behind-the-scenes program.

### Disney Animation: Creating a Character

*D Lounge, Deck 4, Midship - 3:00 pm*

Go behind the scenes at Walt Disney Animation Studios as Walt Disney himself talks about his most famous characters, then learn the basic techniques of drawing your favorite pals in this fun and interesting enrichment program.

### Dream Quest (18+)

*Evolution, Deck 4, Aft - 10:15 pm*

Enjoy the wildest and wackiest scavenger team event on the seven seas!

### Book Your Next Disney Vacation Today!

If you're thinking about booking a future Disney vacation, today is your last chance to save with special offers only available onboard! The last day of the cruise tends to get busy in the evening, so don't miss this opportunity to plan your next Disney vacation. Visit the Disney Vacation Planning Center, Deck 4, Midship, for more information.



## DINNER MENU

Animator's Palate: Pacific Rim Cuisine  
 Enchanted Garden: Continental Market  
 Royal Palace: French Dinner

## DRINK OF THE DAY

Paradise Punch (Alcoholic)  
 Coco Bali (Non Alcoholic)

## IMPORTANT NUMBERS

Fire/Security: 7-3001  
 Medical Emergency: 7-3000  
 Health Center: 7-1923



## ADULT ACTIVITY HIGHLIGHTS

### SENSES SPA FITNESS CLASSES & SEMINARS

*Wake Up & Stretch Class* - Senses Fitness Center - 7:00 am  
*Fab Abs* - Senses Fitness Center - 7:30 am  
*Body Sculpt Boot Camp* (Nom. Fee) - Senses Fitness Center - 8:00 am  
*Yoga on the Beach* - Serenity Bay - 10:30 am  
*Secrets to a Flatter Stomach* - Senses Fitness Center - 3:00 pm  
*Acupuncture: Digestive System & Stress Relief* - Senses Spa & Salon - 4:00 pm  
*Good Feet Seminar: Relieving Back Pain* - Senses Fitness Center - 4:30 pm  
*Pure Form Pilates* - Senses Spa & Salon - 5:00 pm



### 1820 SOCIETY: ISLAND BIKE RIDE

*Bike Rentals, Disney's Castaway Cay - 10:45 am*

Join your Cruise Staff team as they take you on a bike riding adventure around the island. Meet at the Bike Rentals where the fun will begin!



### 1820 SOCIETY: BASKETBALL FREE THROW

*In Da Shade Game Pavilion, Disney's Castaway Cay - 1:00 pm*

Join your Cruise Staff in this fun tournament and see how many you can sink in 30 seconds!

### 1820 SOCIETY: MINI GOLF

*Goofy Golf, Deck 13, Aft - 5:00 pm*

Can you get a hole in one? Give it a try with some mini golf.

### 1820 SOCIETY: FAREWELL

*Evolution, Deck 4, Aft - 9:45 pm*

Join your Cruise Staff and your new friends in this last gathering for some fun.



### MAKING OF THE DREAM

*Evolution, Deck 4, Aft - 3:00 pm*

Explore the origins of Disney Cruise Line and the latest and greatest innovations conjured especially for the Disney Dream in this fascinating and entertaining behind-the-scenes program.

### CRUISIN' SOLO GATHERING

*Cove Cafe, Deck 11, Forward - 5:15 pm*

Single, single parent or just traveling alone? Join your Cruise Staff for an informal gathering.



## FUN FOR ALL AGES HIGHLIGHTS

### RUNDISNEY: CASTAWAY CAY 5K (10+)

*Evolution, Deck 4, Aft - 8:15 am*

Runners (10+) meet together on the ship. We will depart the ship shortly thereafter, and make our way to the Bike Rentals where the run will begin.



### WAKE UP WITH DISNEY JUNIOR

*D Lounge, Deck 4, Midship - 8:30 am*

What happens when you experience unlimited fun with your favorite Disney Junior shows? You get an exciting dance party designed especially for preschoolers ages seven and under.



### ISLAND POWER WALK

*Post Office, Disney's Castaway Cay - 9:30 am*

Join your Cruise Staff for a brisk walk around the island. Walk will begin 15 minutes after the scheduled meet time.

### CRAB RACES

*Island Gazebo 1, Disney's Castaway Cay - 11:45 am*

*Island Gazebo 2, Disney's Castaway Cay - 12:45 pm*

Watch some local sea creatures make a break for the finish line.

### FAMILY WHALE DIG

*Monstro Point, Disney's Castaway Cay - 1:15 pm*

Our island paleontologist leads us in the excavation of a giant whale skeleton and other fossilized treasures! Make no bones about it, this is an adventure every beachcomber is sure to dig!



### CHIP-IT GOLF (12+)

*Lobby Atrium, Deck 3, Midship - 3:00 pm*

It's par for the course for our Guests 12 and older to compete on our special "greens" in this fun tournament.

### DISNEY VACATION CLUB GROUP PREVIEW

*D Lounge, Deck 4, Midship - 4:15 pm*

Want to learn more about taking magical vacations year after year? Please see a Disney Vacation Club representative on Deck 4, Midship, or call 7-2805 from your stateroom phone for more information about our interactive group presentation.



### \$10,000 FINAL MEGA JACKPOT BINGO

*Bingo Pre-Sales start at 4:00 pm*

*Evolution, Deck 4, Aft - 4:30 pm*

It's Big, it's Massive, it's Supersized! It's \$10,000 MEGA Jackpot Bingo! Take home \$10,000 if you can cover your card in 46 numbers or less. If not, we carry on to play for the biggest cash prize of the session! Plus, the Snowball Jackpot must be won at this final game of bingo! Pre-Sales start 30 minutes prior to game.



### CAPTAIN'S SIGNING

*White Caps, Deck 3, Forward - 7:15 pm*

Come to White Caps at 7:15 pm to have your Disney Dream merchandise signed by the Master of the Disney Dream, Captain Henry. Stunning replica ships are available in Sea Treasures, Deck 3, Forward.

### OFFICER PIN TRADING

*Preludes, Deck 3, Forward - 7:15 pm*

Come trade pins with the Officers of the Disney Dream.



### CLUB NEW YEAR'S EVE

*Evolution, Deck 4, Aft - 7:30 pm*

Club New Year's Eve, you won't want to miss this journey of musical genres in history and performances by some of your favorite Cruise Staff. Bring your family and help us count down to a brand new year!

### DREAM QUEST

*D Lounge, Deck 4, Midship - 10:15 pm*

Enjoy the wildest and wackiest scavenger team event on the seven seas!



### FAMILY SUPERSTAR KARAOKE

*D Lounge, Deck 4, Midship - 10:45 pm*

Join your Cruise Staff in D Lounge tonight and sing along to your favorite song - fun for everyone.



## YOUTH ACTIVITIES HIGHLIGHTS

### Dine & Play

A convenience for families dining at 8:15 pm, our Youth Activities counselors will be available at 9:15 pm at the entrance of Royal Palace, Enchanted Garden and Animator's Palate dining rooms to bring registered children to join the fun in the Youth Activities areas.



**Deck 5, Midship (7-1440)**  
(3 - 12 years old)

4:00 pm - 12:00 am

### STAR WARS GALAXY DESIGNERS

6:30 pm

Learn about some of the coolest ships in the galaxy and then learn to design your very own.

### PLUTO'S PAJAMA PARTY

8:45 pm

Bring the little ones in their pajamas but there will be anything but sleep when Pluto and friends host the ultimate slumber party!



**Deck 5, Midship (7-1445)**  
(3 - 12 years old)

5:00 pm - 12:00 am

### STITCH'S ADVENTURE SQUAD

5:00 pm

Stitch, everyone's favorite alien, is making an appearance to share some of his mischievous games and activities.

### STITCH'S FINAL FAREWELL

7:00 pm

We'll get a very special guest as we celebrate the grand finale to this cruise!



**Deck 13, Midship (7-9743)**  
(11 - 14 years old)

4:00 pm - 12:00 am

### FLUBBER

7:00 pm

Encounter solid, liquid, gas and make "Flubber-like Goo".

### BRING IT!

9:30 pm

How much do you think you know? Test your knowledge in this Music Challenge, where you will be pitted head to head.



**Entrance on Deck 4, Forward (7-9417)**  
(14 - 17 years old)

5:00 pm - 1:00 am

### ANYONE CAN COOK

9:00 pm

Anyone can cook as we work together to create some of our favorite treats.

### MIX AND MATCH

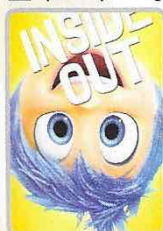
11:00 pm

Try to find your "perfect match" in Disney's very own "Dating" game.

## BUENA VISTA THEATRE

Deck 4 & 5, Midship  
Today's Movies

Open Captioning

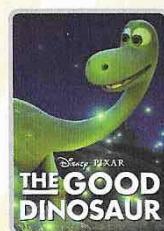


8:30 am  
Duration: 1 hr 42 mins  
Rating: PG



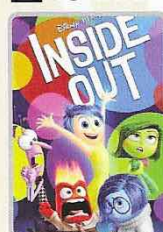
11:00 am  
Duration: 2 hrs 10 mins  
Rating: PG

Preview

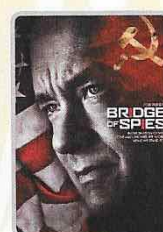


2:00 pm  
Duration: 12 mins  
Rating: G

DOLBY 3D



2:30 pm  
Duration: 1 hr 42 mins  
Rating: PG



5:00 pm & 8:15 pm  
Duration: 2 hrs 15 mins  
Rating: PG-13



11:15 pm  
Duration: 2 hrs 14 mins  
Rating: PG



### FAMILY GAME SHOW

Bring the entire family and test your Disney knowledge in the high-tech interactive game show, Family Fusion.

**D Lounge,  
Deck 4, Midship,  
9:45 pm**



### ADULT TRIVIA

"Moon Walk" back to the 80's as we put your musical knowledge of the decade to the test.

**Evolution (18+),  
Deck 4, Aft,  
10:45 pm**

### YOUTH ACTIVITIES OPEN HOUSE

Open House is an opportunity for all to come and participate in a variety of exciting activities and free time in the Oceaneer Club, Oceaneer Lab, Edge and Vibe throughout the cruise. During these times secured programming will still be offered in the other venues for those looking to check their children into care.

Disney's Oceaneer Club: 9:00 am - 1:00 pm  
Disney's Oceaneer Lab: 1:00 pm - 5:00 pm  
Edge: 3:00 pm - 4:00 pm  
Vibe: 4:00 pm - 5:00 pm



# MORE TO ENJOY WHILE ONBOARD

## DISNEY PARKS VACATION SAVINGS

Keep the magic going! Let us help you create the perfect Walt Disney World® Resort or Disneyland® Resort vacation for your family. Visit the Disney Vacation Planning Center on Deck 4, Midship to find out how you can save while on board.

## DISNEY VACATION CLUB® GROUP PREVIEW

Want to learn more about taking magical vacations year after year? Please see a Disney Vacation Club representative on Deck 4, Midship, or call 7-2805 from your stateroom phone for more information about our interactive group presentation.

## EXPRESS WALK OFF

This option allows you to take your luggage off the ship at your leisure once the ship has been cleared by the local authorities. You won't need to wait for your luggage to enter the terminal and there is no need to claim it inside the terminal building. Please note that no assistance with luggage is provided for this option.



## SALON TASTER SPECIAL

Choose from a scalp massage, European facial, hand treatment, sunglow make-over, hair treatment, eye-collagen treatment, foot and ankle massage and neck and shoulder massage.

Three for \$99, five for \$119, and eight for \$139.

*Senses Spa & Salon, Deck 11, Forward, Ext. 7-1465*



Choose your alliance and gear up with fun new Star Wars merchandise designed exclusively for Disney Cruise Line.

**AVAILABLE ONBOARD!  
DECK 3, FORWARD**



## PROFESSIONAL PORTRAITS TONIGHT!

Lifestyle & Night Ship Portrait – Six Guests maximum

**5:15 pm - 6:30 pm**

**7:15 pm - 8:30 pm**

Grand Staircase – Groups Accommodated

**5:15 pm - 6:30 pm**

**7:45 pm - 8:30 pm**

Create a personal storybook of your cruise to share with family and friends.

Photobook orders close at 10:00 pm

Disney CRUISE LINE

## PORT ADVENTURES

Welcome to Disney's Island Paradise Castaway Cay! Today is the day to relax in an inner tube, snorkel in the Caribbean blue, get up-close and personal to real life stingrays or fly high in the sky on a parasail excursion during a breathtaking aerial adventure. Visit Marge's Barges or one of the rental locations and our friendly team will assist in making any last minute bookings.

## PORT ADVENTURES MEETING TIMES AND LOCATIONS

As per ticket	Castaway Ray's Stingray Adventure	Gil's Fins and Boats
As per ticket	Castaway Cay Bottom Fishing	Marge's Barges
As per ticket	Glass Bottom Boat	Marge's Barges
As per ticket	Nature Walk and Kayaking	As per ticket
As per ticket	Parasailing	Marge's Barges
9:00 am	Teen Wild Side	Vibe
As per ticket	Single & Double Watercraft	Boat Beach

## CASTAWAY CAY ISLAND RENTALS

Bicycles	8:30 am - 4:00 pm	Bike Rentals
Boats	8:30 am - 4:00 pm	Boat Beach
Snorkeling Gear	8:30 am - 3:30 pm	Gil's Fins and Boats / Flippers and Floats
Float	8:30 am - 3:30 pm	Gil's Fins and Boats / Flippers and Floats
Getaway Package	8:30 am - 3:30 pm	Gil's Fins and Boats / Flippers and Floats

Reservations can be made on the island at each rental location. Castaway Ray's walk up reservations can be made at Gil's Fins and Boats on Family Beach.

## SHOPPING

### TAG HEUER TIMEPIECES

Over 150 years of excellence in keeping time, proudly worn all over the world, and available here on the Disney Dream. White Caps, Deck 3 Forward.

### DISNEY'S CASTAWAY CAY SHOPPING

While visiting Disney's Castaway Cay today, take the time to visit She Sells Seashells and Everything Else and Buy the Seashore where you can find Disney's Castaway Cay branded items such as casual and beach wear for the whole family. Here you can also gear up with any items you may need for fun in the sun such as towels, bathing suits, beach toys, and sunscreen.

### BIBBIDI BOBBIDI BOUTIQUE

Be a part of a new world with the Bibbidi Bobbidi Boutique's Under The Sea makeover package, designed especially for Disney Cruise Line! Shimmer like a mermaid with a two piece swim suit and matching accessories which include colored sun block, necklace, hair clip, and nail polish. Deck 5, Midship.

### SOPHIA FIORI DISNEY INSPIRED JEWELRY

Don't miss your final chance to take home one of the sparkling diamond jewelry pieces from the Sophia Fiori Disney inspired diamond jewelry by visiting White Caps today! Deck 3, Forward.

### OFFICER PIN TRADING

Check out the Disney Cruise Line pins when you visit Mickey's Mainsail. Later, join the Officers of the Disney Dream Cruise Ship for pin trading fun at 7:15 pm in Preludes. Deck 3, Forward.

### CAPTAIN'S SIGNING

Come to White Caps at 7:15 pm to have your Disney Dream merchandise signed by the Master of the Disney Dream, Captain Henry. Stunning replica ships are available in Sea Treasures, Deck 3, Forward. Beautiful Disney Cruise Line® prints are available in the Vista Gallery, Deck 4, Midship.

**Due to port regulations, when the ship is docked, the stores will remain closed.**

## IMPORTANT INFORMATION

### Security Notice

All Guests (including children) who wish to disembark the ship are required to present their Key to the World card at the gangway. A photo ID is also required for those Guests who are 18 years of age or older. Guests under the age of 18 are required to have a parent, guardian or other responsible adult sign an authorization form at the Guest Service Desk if they wish to go ashore unaccompanied or with any adult from another stateroom.

### Inclement Weather

For the safety of all Guests, outdoor events may be changed due to unforeseen weather conditions.

### Cold and Flu Reminder

Please wash hands frequently and thoroughly, particularly before meals. Contact the Health Center by dialing 7-1923, should anyone in your party become ill.

### Corridor Quiet Hours

As a courtesy to all our Guests, please recognize quiet hallway hours from 10:00 pm - 8:00 am.

### Sunscreen/Insect Repellent Advisory

Use sunscreen first and protect against mosquito bites and related illnesses by applying insect repellent on top of sunscreen when going ashore. Insect repellent is available for purchase in White Caps.

### Environmental Message

With Disney's commitment to the environment, please refrain from throwing anything over the ship's side. Thank you!

### No Reserved Seats Policy

As a courtesy to all our Guests, we kindly advise that the saving of seats is not permitted in the Walt Disney Theatre, and the saving of the sun loungers is not permitted on Deck 11, 12 and 13. Items left unattended will be returned to lost and found at Guest Services, Deck 3, Midship.

### Smoking

For the comfort of our guests the following areas are designated as Smoking areas:

- Deck 13, Forward, port side, by "Currents"
- Deck 12, Aft, port side outdoor area that is accessible through the Meridian Lounge
- Deck 4, Aft, port side, the outside Promenade Deck from 6:00 pm to 6:00 am only (all of Deck 4 is no smoking from 6:00 am to 6:00 pm).

- Smoking is prohibited inside all Guest staterooms and on stateroom verandahs. Guests found smoking in their staterooms or on their verandahs will be charged a \$250 stateroom recovery fee. Electronic cigarettes may only be used in designated smoking areas.

### Walt Disney Theatre

Theatrical performances may use artificial fog, strobe lights, pyrotechnics and other special effects. For the safety of our performers and the comfort of those around you, the use of any photography, video recording devices or any electronic equipment is prohibited.

### Verandah Safety

Please do not leave any combustible materials on your balcony when not present in your stateroom for safety reasons.



Morning	8:30	8:45	9:00	9:15	9:30	9:45	10:00	10:15	10:30	10:45	11:00	11:15	11:30	11:45	12:00	12:15	12:30	12:45	1:00	1:15	1:30
FUNNEL VISION	Tangled (PG) Funnel Vision										Star Wars Rebels: Disney Channel XD (G) Funnel Vision										
BUENA VISTA THEATRE	Inside Out (PG)  Open Captioning Duration: 1 Hour 42 Minutes										Tomorrowland (PG) Duration: 2 Hours 10 Minutes										
CHARACTERS	Daisy Gangway Captain Jack Sparrow Marge's Barges Mickey Donald Goofy Scutty Cove Gangway Rustmore										Mickey Jack Sparrow Goofy Rustmore Marge's Barges Scutty Cove Pluto Donald Minnie Scutty Cove Gangway Rustmore										
FUN FOR ALL AGES	Youth Activities Open House Disney's Oceaneer Club Island Power Walk Post Office										Crab Races Island Gazebo 1 Crab Races Island Gazebo 2 Family Whale Dig Monstro Point Cruise Staff DJ Island Gazebo 1										
ADULTS	Friends of Bill W. Outlook										1820 Society: Bike Ride Bike Rentals Yoga on the Beach Serenity Bay										
VIBE 14-17 YEARS OLD	Teen Wild Side Departs Vibe at 9:15 am										Hangin' at Teen Hideout										
EDGE 11-14 YEARS OLD	Invade Teen Hideout										Lunch at Cookies Too Pelican Plunge										
SCUTTLE'S COVE	Sand Castle Fun										Lunch at Pop's Props Caribbean Beach Party										
OCEANEER LAB 3-12 YEARS OLD											Youth Activities Open House										
OCEANEER CLUB 3-12 YEARS OLD	Youth Activities Open House																				
Afternoon	1:45	2:00	2:15	2:30	2:45	3:00	3:15	3:30	3:45	4:00	4:15	4:30	4:45	5:00	5:15	5:30	5:45	6:00	6:15	6:30	6:45
FUNNEL VISION	Frozen (PG) Funnel Vision										The Jungle Book (G) Funnel Vision										
BUENA VISTA THEATRE	The Good Dinosaur Preview (G) Duration: 12 Minutes										Bridge of Spies (PG-13) Duration: 2 Hours 15 Minutes										
CHARACTERS	Stitch Gangway										Storytime with Mrs. Claus Lobby Atrium										
FUN FOR ALL AGES	Cruise Staff DJ Island Gazebo 1										\$10,000 Final Mega Jackpot BINGO Evolution Live Music with The Get Ups Lobby Atrium Live Piano with Joe Creamer Pink: Wine and Champagne Bar										
ADULTS	Art of the Theme Show Tour Meridian Making of the Dream Evolution										Ultimate Disney Trivia District Lounge Cruisin' Solo Gathering Cove Cafe										
VIBE 14-17 YEARS OLD	Hangin' at Teen Hideout										AquaDuck Fun										
EDGE 11-14 YEARS OLD	Hangin' at In Da Shade										AquaDuck Fun										
SCUTTLE'S COVE	Water Games										Capture the Flag										
OCEANEER LAB 3-12 YEARS OLD	Youth Activities Open House										Stitch's Adventure Squad										
OCEANEER CLUB 3-12 YEARS OLD	Anyone Can Cook										Jedi Training - Experience the Force										
Evening	7:00	7:15	7:30	7:45	8:00	8:15	8:30	8:45	9:00	9:15	9:30	9:45	10:00	10:15	10:30	10:45	11:00	11:15	11:30	11:45	12:00
FUNNEL VISION	NFL Football: Cincinnati Bengals vs. Arizona Cardinals Funnel Vision (Subject to Satellite Reception and Availability)										Star Wars: Episode VI. Return of the Jedi (PG) Duration: 2 Hours 14 Minutes										
BUENA VISTA THEATRE	Bridge of Spies (PG-13) Duration: 2 Hours 15 Minutes																				
CHARACTERS	Mickey Mouse Deck 4, Balcony Minnie Mouse Lobby Atrium (V)										SEA VU! REAL SOON! Lobby Atrium										
FUN FOR ALL AGES	Pin Trading Preludes Captain's Signing White Caps Disney Trivia D Lounge										Walt Disney Theatre Live Violin with Ievgeniia Lobby Atrium Family Dream Quest D Lounge Live Piano with Joe Creamer Lobby Atrium										
ADULTS	NFL Football: Cincinnati Bengals vs. Arizona Cardinals Pub 687 (Subject to Satellite Reception and Availability) Live Piano with Joe Creamer District Lounge										1820 Society: Farewell Evolution Cruise Staff DJ Evolution Dream Quest Evolution Cruise Staff DJ District Lounge										
VIBE 14-17 YEARS OLD	Smoothie Time										Gender Wars										
EDGE 11-14 YEARS OLD	Flubber										How Well Do You Know Your Counselor?										
OCEANEER LAB 3-12 YEARS OLD	Stitch's Final Farewell										Playmation										
OCEANEER CLUB 3-12 YEARS OLD	Holiday Party										Wacky Relays										

Symbol for activities that will be repeated during the cruise



FOLD

Fold along the dotted lines and take me with you so you don't miss any of the fun!

FOLD

IN THE SPOTLIGHT SERIES  
2006-2011 SERIES

JUMP UP! SERIES  
CREATE & INVENT SERIES  
OPEN HOUSE

CLUBHOUSE SERIES  
STORYBOOK SERIES



SUNDAY, NOVEMBER 22, 2015 - DISNEY'S CASTAWAY CAY

# BUENA VISTA THEATRE

Deck 4 & 5, Midship

Open Captioning

Preview

DOLBY 3D

DOLBY 3D



8:30 am Duration: 1 hr 42 mins Rating: PG	11:00 am Duration: 2 hrs 10 mins Rating: PG	2:00 pm Duration: 12 mins Rating: G	2:30 pm Duration: 1 hr 42 mins Rating: PG	5:00 pm & 8:15 pm Duration: 2 hr 14 mins Rating: PG	11:15 pm Duration: 2 hrs 15 mins Rating: PG
---	---	---	---	---	---

## Character Appearances

### DAISY DUCK

Gangway - 9:15 am & 10:15 am

### PLUTO

Mt. Rustmore - 9:30 am  
Scuttle's Cove - 10:30 am  
Lobby Atrium (V) - 5:45 pm

### MICKEY MOUSE

Scuttle's Cove - 9:30 am  
Mt. Rustmore - 10:30 am  
Deck 4, Balcony  
5:15 pm & 7:30 pm

### CAPTAIN JACK SPARROW

Marge's Barges  
9:30 am & 10:45 am

### DONALD DUCK

Gangway - 9:45 am & 10:45 am

### GOOFY

Mt. Rustmore - 10:00 am  
Scuttle's Cove - 11:00 am  
Lobby Atrium (V) - 5:15 pm

### MINNIE MOUSE

Scuttle's Cove - 10:00 am  
Mt. Rustmore - 11:00 am  
Lobby Atrium (V) - 7:30 pm

### CHARACTER DANCE PARTY

Island Gazebo 1 - 12:15 pm

(H) Halfway - (S) Starboard Side - (P) Port Side - (V) Vestibule

For details of daily Disney character appearances, refer to the character line on your Navigator Grid, or the digital character board in the Lobby Atrium.



## YOUTH ACTIVITIES THEMED EXPERIENCES

**CLUBHOUSE SERIES**  
focuses on movement and features content which appeals to younger children.

**STORYBOOK SERIES**  
is designed with a strong connection to the Disney classic stories.

**JUMP UP! SERIES**  
includes large group games & movement-oriented activities.

**CREATE & INVENT SERIES**  
will have a tactile focus allowing children to create and admire their work.

**IN THE SPOTLIGHT SERIES**  
focuses on children's stage presence with lots of activities and enthusiasm.

**SOLVE IT! SERIES**  
are less active, but will challenge children with problem/solutions-based activities.

### OPEN HOUSE

activities for families, adults and children of all ages to enjoy together.

## SHIP DIRECTORY

### YOUTH ACTIVITIES

DISNEY'S OCEANEER CLUB	DECK 5, MID	4:00 PM - 12:00 AM
DISNEY'S OCEANEER LAB	DECK 5, MID	5:00 PM - 12:00 AM
EDGE	DECK 13, MID	4:00 PM - 12:00 AM
SCUTTLE'S COVE	CASTAWAY CAY	9:00 AM - 4:00 PM
VIBE	DECK 4, FWD	5:00 PM - 1:00 AM
IT'S A SMALL WORLD NURSERY	DECK 5, MID	9:00 AM - 12:00 AM

### POOLS & MORE

\* Children under 12 must have adult supervision in pool areas.

AQUADUCK	DECK 12, AFT	10:00 AM - 10:00 PM
DONALD'S POOL	DECK 11, MID	10:00 AM - 6:00 PM
		8:00 PM - 10:00 PM
FUNNEL PUDDLE	DECK 12, FWD	8:00 AM - 6:00 PM
MICKEY'S POOL	DECK 11, MID	8:30 AM - 10:00 PM
MICKEY'S SLIDE	DECK 11, MID	12:30 PM - 6:00 PM
NEMO'S REEF	DECK 11, MID	10:00 AM - 6:00 PM
QUIET COVE POOL (18+)	DECK 11, FWD	8:00 AM - 10:00 PM
SATELLITE FALLS (18+)	DECK 13, FWD	8:00 AM - 8:00 PM

Complimentary pool vests are available for children to use in the pools onboard.  
Located on the pool deck.

### RECREATION

GOLF/SPORTS SIMULATOR	DECK 13, AFT	3:00 PM - 6:00 PM
GOOFLY GOLF	DECK 13, AFT	8:00 AM - 10:00 PM
GOOFLY'S SPORTS DECK	DECK 13, AFT	12:00 AM - 6:00 PM
MARGE'S BARGES	CASTAWAY CAY	
MIDSHIP DETECTIVE AGENCY	DECK 2 & 5, MID	8:00 AM - 11:00 PM
		8:00 AM - 11:00 PM
PORT ADVENTURES DESK	DECK 5, MID	
SENSES FITNESS CENTER (18+)	DECK 11, FWD	6:00 AM - 10:00 PM

### GENERAL INFORMATION

BUENA VISTA THEATRE	DECK 4 & 5, MID	SHOWTIMES
DISNEY VACATION PLANNING CENTER	DECK 4, MID	8:00 AM - 10:00 AM
		3:00 PM - 10:00 PM
GUEST SERVICES	DECK 3, MID	24 HOURS
HAIRBRAIDING	DECK 11, MID	5:30 PM - 9:30 PM
MEDICAL HEALTH CENTER	DECK 1, FWD	9:30 AM - 11:00 AM
		4:30 PM - 7:00 PM
PORT & SHOPPING DESK	DECK 4, MID	
PRELUDES	DECK 3, FWD	5:30 PM - 9:00 PM
SENSES SPA AND SALON	DECK 11, FWD	8:00 AM - 10:00 PM
SHUTTERS PHOTO GALLERY	DECK 4, MID	5:30 PM - 11:30 PM
WALT DISNEY THEATRE	DECK 3 & 4, FWD	SHOWTIMES

### SHOPPING

BIBBIDI BOBBIDI BOUTIQUE	DECK 5, MID	9:00 AM - 9:00 PM
MICKEY'S MAINSAIL	DECK 3, FWD	5:30 PM - 11:30 PM
SEA TREASURES	DECK 3, FWD	5:30 PM - 11:30 PM
QUACKS	DECK 11, MID	
VISTA GALLERY	DECK 4, MID	6:30 PM - 11:00 PM
WHITE CAPS	DECK 3, FWD	5:30 PM - 11:30 PM
WHOZITS & WHATZITS	DECK 11, MID	7:00 PM - 11:00 PM

DUE TO PORT REGULATIONS, WHEN THE SHIP IS DOCKED, THE STORES MUST REMAIN CLOSED.

### DINNER MENU

Animator's Palate: Pacific Rim Cuisine  
Enchanted Garden: Continental Market Cuisine  
Royal Palace: French Dinner  
Dining Times: 5:45 pm & 8:15 pm

### DRINK OF THE DAY

Paradise Punch (Alcoholic)  
Coco Bali (Non Alcoholic)

### WEATHER FORECAST

Today: Cloudy  
High: 78°F/26°C  
Tomorrow: Partly Cloudy  
High: 76°F/24°C

Evening Attire: Optional Dress Up

## DINING & LOUNGES

### BREAKFAST

CABANAS CONTINENTAL	DECK 11, AFT	7:00 AM - 7:30 AM
CABANAS	DECK 11, AFT	7:30 AM - 10:45 AM
ENCHANTED GARDEN	DECK 2, MID	8:00 AM - 10:30 AM
ROYAL PALACE	DECK 3, MID	8:00 AM - 9:30 AM

### LUNCH

CABANAS	DECK 11, AFT	12:00 PM - 2:00 PM
COOKIES	CASTAWAY CAY	11:30 AM - 2:00 PM
COOKIES TOO	CASTAWAY CAY	11:30 AM - 2:00 PM
FILLMORE'S FAVORITES	DECK 11, MID	11:00 AM - 6:00 PM
LUIGI'S PIZZA	DECK 11, MID	11:00 AM - 6:00 PM
TOW MATER'S GRILL	DECK 11, MID	11:00 AM - 6:00 PM

### DINNER

ANIMATOR'S PALATE	DECK 3, AFT	5:45 PM & 8:15 PM
ENCHANTED GARDEN	DECK 2, MID	5:45 PM & 8:15 PM
PALO (18+) (RESERVATIONS REQ. & NON-FEE APPLIES)	DECK 12, AFT	6:00 PM - 8:30 PM
REMY (18+) (RESERVATIONS REQ. & NON-FEE APPLIES)	DECK 12, AFT	6:00 PM - 8:30 PM
ROYAL PALACE	DECK 3, MID	5:45 PM & 8:15 PM
TOW MATER'S GRILL	DECK 11, MID	6:00 PM - 11:00 PM

### LATE NIGHT SNACKS

LUIGI'S PIZZA	DECK 11, MID	9:30 PM - 12:00 AM
---------------	--------------	--------------------

### ADDED FEATURES

BEVERAGE STATION	DECK 11, MID	24 HOURS
EYE SCREAM	DECK 11, MID	11:00 AM - 12:00 AM
ROOM SERVICE	DIAL O	CLOSES AT 1:30 AM
VANELLOPE'S SWEETS AND TREATS	DECK 11, AFT	1:30 PM - 1:30 PM

### ENTERTAINMENT - LOUNGES - BARS

Adults must be 21 and older to consume alcoholic beverages.

BON VOYAGE	DECK 3, MID	3:00 PM - 11:00 PM
COVE BAR (18+)	DECK 11, FWD	10:00 AM - 11:00 PM
COVE CAFE (18+)	DECK 11, FWD	7:00 AM - 12:00 AM
CURRENTS (18+)	DECK 13, FWD	2:00 PM - 11:00 PM
D LOUNGE	DECK 4, MID	SHOWTIMES
DISTRICT LOUNGE (18+ AFTER 9:00 PM)	DECK 4, AFT	5:00 PM - 2:00 AM
EVOLUTION (18+)	DECK 4, AFT	9:30 PM - 12:00 AM
FROZONE TREATS	DECK 11, MID	1:00 PM - 6:00 PM
MERIDIAN (18+)	DECK 12, AFT	5:00 PM - 12:00 AM
OUTLOOK (18+)	DECK 14, MID	
PINK WINE AND CHAMPAGNE BAR (18+)	DECK 4, AFT	5:00 PM - 12:00 AM
PUB 687 (18+ AFTER 9:00 PM)	DECK 4, AFT	12:00 PM - 12:00 AM
SENSES JUICE BAR	DECK 11, FWD	6:00 AM - 10:00 PM
SKYLINE (18+)	DECK 4, AFT	5:30 PM - 12:00 AM
VISTA CAFE	DECK 4, MID	7:00 AM - 11:00 PM
WAVES	DECK 12, AFT	

### CASTAWAY CAY BARS

CONCHED OUT BAR	CASTAWAY CAY	9:30 AM - 4:00 PM
CASTAWAY AIR BAR	CASTAWAY CAY	9:30 AM - 3:30 PM
HEADS UP BAR	CASTAWAY CAY	9:30 AM - 3:30 PM
SAND BAR	CASTAWAY CAY	9:30 AM - 3:30 PM
SUMMERTIME FREEZE	CASTAWAY CAY	9:00 AM - 3:30 PM

Public Health Advisory: Consuming raw or under-cooked meats, poultry, seafood, shellfish, or eggs may increase your risk for food borne illness, especially if you have certain medical condition.

### IMPORTANT NUMBERS

Fire/Security: 7-3001  
Medical Emergency: 7-3000  
Health Center: 7-1923

All Ashore: Approx. 8:30 am  
All Aboard: 4:45 pm