

# PERSONAL NAVIGATOR

WEDNESDAY, NOVEMBER 11, 2015

Sunrise 6:36 am Sunset: 5:34 pm  
Evening Attire: Cruise Casual  
All Aboard: 4:00 pm

Today: Partly Cloudy High: 78°F/26°C  
Tomorrow: Partly Sunny High: 80°F/27°C

MIAMI, FLORIDA

## TWICE CHARMED

AN ORIGINAL TWIST ON THE CINDERELLA STORY

STEP BACK IN TIME TO EXPERIENCE THE STORY OF CINDERELLA IN A MAGICAL NEW WAY. ENJOY THIS MAGNIFICENT MUSICAL PRODUCTION WITH YOUR FAVORITE CHARACTERS - AND A FEW NEW ONES!

WALT DISNEY THEATRE

Deck 4, Forward  
6:15 pm & 8:30 pm

As a courtesy to all Guests, we kindly advise that the saving of seats is **not** permitted in the Walt Disney Theatre.



Assistance available at the entrance to the Walt Disney Theatre 30 minutes prior to show time.



VETERANS DAY

## Welcome Aboard!

### Your Stateroom and Luggage

Staterooms will be ready at 1:30 pm. To allow stateroom hosts to prepare your room, please do not remove the blue stanchion straps. Stateroom hosts will deliver luggage throughout the day until 5:30 pm.

### Staterooms with Bunk Beds

Bunk beds are recessed into the ceiling and will be prepared during evening turndown service by your Stateroom Host/ess.

### Stateroom Safe

Each stateroom is equipped with a secured storage safe. Instructions for use are located on the safe.

### To Change Dining Assignment

Requests for different seating times will be taken today:  
> 12:30 pm - 3:00 pm, Lumiere's, Deck 3, Midship.  
Please call 7-1831 and leave a voicemail.

### Palo Dining Reservations:

Are required and will be taken on a first come basis today at:  
> 12:30 pm - 3:00 pm, Lumiere's, Deck 3, Midship.  
Please call 7-6843 and leave a voicemail.

### Beverage Seminar Reservations:

> 12:30 pm - 3:00 pm, Lumiere's, Deck 3, Midship.

### Dinner

5:45 pm - First Seating  
8:15 pm - Second Seating

Please check your dining tickets for details of your dining rotation, and bring them to your specific dining location. There is no need to wait in line prior to dinner. Dining Rooms open at designated seating times and your table is reserved each night of your cruise.



## HOLIDAY TRADITION

Come gather in the ship's atrium to experience this magical Disney Cruise Line holiday tradition. Join Mickey and the gang for a holiday sing along as a family of dreamers helps us create a little Disney magic by lighting our holiday tree.

Lobby Atrium,  
Deck 3, Midship,  
7:30 pm

## Don't Miss:

### Character Meet & Greet Ticket Distribution

Port Adventures Desk, Deck 3, Midship - 12:00 pm - 3:00 pm  
Pick up your tickets today to meet some of your favorite Disney friends.

- Frozen Meet and Greet
- Princess Gathering

Tickets are required for each of these meet and greets. Space is limited.

### Walking Ship Tour - Tour Del Barco

Preludes, Deck 4, Forward - 1:45 pm & 2:30 pm  
Preludes, Deck 4, Forward - 2:00 pm (en Espanol)  
Enjoy the beauty of the Disney Magic® with your Cruise Staff in this guided tour.

### Mickey Mania

D Lounge, Deck 4, Midship - 7:45 pm & 10:45 pm  
Join us for the ultimate test of your Disney knowledge as we play our live, interactive game show, that's "insania!"

### Match Your Mate (18+)

Fathoms, Deck 3, Forward - 10:45 pm  
It's time to play everyone's favorite couples game show, Match Your Mate!



## GET THE PICTURE!

Visit Shutters today and ask your friendly Shutters staff about the GET THE PICTURE! Digital package which includes all your stateroom photos on one photo disc. For best value, upgrade to include all printed photos, too! Visit Shutters on Deck 4, Aft for more information. Don't wait until the last day. Beat the rush and order yours now! Terms and conditions apply.

## DINNER MENU

Animator's Palate : Pacific Rim Cuisine  
Carioca's : South American Cuisine  
Lumiere's : French Cuisine

## DRINK OF THE DAY

Bahama Mama (Alcoholic)  
Lava Smoothie (Non-Alcoholic)

## IMPORTANT NUMBERS

Fire/Security: 7-3001  
Medical Emergency: 7-3000  
Health Center: 7-1923



# ADULT ACTIVITY HIGHLIGHTS



## FITNESS CLASSES

Senses Spa and Salon has a variety of seminars and fitness classes available throughout the cruise.

Spa Raffle - Senses Spa & Salon - 3:00 pm  
Acupuncture Tongue & Pulse Analysis - Senses Spa & Salon - 4:30 pm  
Complimentary Footprint Analysis - Senses Spa & Salon - 5:00 pm

## BEVERAGE SEMINARS

Your Beverage team has a host of tastings and seminars to entertain and educate you.

Pre-book these experiences at Lumiere's, Deck 3, Midship or Guest Services, Deck 3, Midship (nominal fee applies).

Mixology - Martini Tasting - Tequila & Margarita Tasting  
Cognac Tasting - Whisky Tasting



1820 SOCIETY: STIR IT. BLEND IT. TASTE IT.

Cove Cafe, Deck 9, Midship - 10:00 pm

Join us for a complimentary tasting event including coffee, chai latte and smoothies in Cove Café exclusively for our 18-20 year olds. You can learn how to create your own specialty coffees as well as plan the activities for the rest of your sailing.

## Cruise Highlights

Wednesday	<b>MIAMI</b> Port Departure: 5:00 pm All Aboard: 4:00 pm Attire: Cruise Casual	<b>TWICE CHARMED</b> Walt Disney Theatre 6:15 pm & 8:30 pm
Thursday	<b>DISNEY'S CASTAWAY CAY</b> All Ashore: 8:30 am All Aboard: 4:45 pm Attire: Pirate or Cruise Casual	<b>SHOWTIME:</b> <b>MAX WINFREY</b> Walt Disney Theatre 6:15 pm & 8:30 pm
Friday	<b>NASSAU</b> All Ashore: 7:00 am All Aboard: 3:45 pm Attire: Optional Dress Up	<b>DISNEY DREAMS: AN ENCHANTED CLASSIC</b> Walt Disney Theatre 6:15 pm & 8:30 pm
Saturday	<b>KEY WEST</b> All Ashore: 12:00 pm All Aboard: 5:45 pm Attire: Cruise Casual	<b>TANGLED: THE MUSICAL</b> Walt Disney Theatre 6:15 pm & 8:30 pm

Subject to change.

# FUN FOR ALL AGES HIGHLIGHTS



## RUNDISNEY: CASTAWAY CAY 5K REGISTRATION (10+)

Port Adventures Desk, Deck 3, Midship

Sign up today for the runDisney: Castaway Cay 5K! Please visit the Port Adventures Desk or the Guest Services Desk to register at anytime prior to our arrival at Disney's Castaway Cay. Please note that runners must be 10 years of age or older to participate.



## MICKEY'S TREE LIGHTING MAGIC

Lobby Atrium, Deck 3, Midship - 7:30 pm

Come gather in the ship's atrium to experience this magical Disney Cruise Line holiday tradition. Join Mickey and the gang for a holiday sing along as a family of dreamers helps us create a little Disney magic by lighting our holiday tree.



## MICKEY MANIA

D Lounge, Deck 4, Midship - 7:45 pm & 10:45 pm

Join us for the ultimate test of your Disney knowledge as we play our live, interactive game show, that's "insania!"



## DIAMOND & \$500 BINGO

Bingo Pre-Sales start at 7:30 pm

Fathoms, Deck 3, Forward - 7:45 pm

Join your Cruise Staff as we raffle off a diamond pendant courtesy of your Shopping Guide, as well as playing four games with four cash prizes. You stand a chance to walk home with \$500 should you cover the Big X pattern in 20 numbers or less on the fourth game. Pre-Sales start 15 minutes prior to game.

## DISNEY TRIVIA

Promenade Lounge, Deck 3, Aft - 9:45 pm

Navigate your way through a round of questions to test how much you really know about Disney.



## FAMILY SUPERSTAR KARAOKE

D Lounge, Deck 4, Midship - 11:15 pm

Join your Cruise Staff in D Lounge tonight and sing along to your favorite song - fun for everyone.

## FEATURED VARIETY ACT THIS VOYAGE



### THE PHYSICAL COMEDY OF MAX WINFREY

"Fasten your seat belts and get ready for the outrageous Physical Comedy of Max Winfrey. His unique style of combining stunts and improvisational comedy has landed him numerous appearances on national television, most recently as a semi-finalist on America's Got Talent. Earlier this year, Max shattered the Guinness World Record for endurance juggling with full sized axes. Young and old alike will enjoy this unpredictable show that is filled with crazy audience participation."





# YOUTH ACTIVITIES HIGHLIGHTS



Deck 5, Midship (7-5864)

Infants and Toddlers can enjoy toys and activities at It's a Small World Nursery. Reservations are first come, first served so please stop by!

12:30 pm - 3:30 pm

4:15 pm - 11:00 pm



Deck 5, Midship (7-1439)  
(3 - 12 years old)

12:30 pm - 3:30 pm

4:15 pm - 12:00 am



Deck 5, Midship (7-1445)  
(3 - 12 years old)

12:30 pm - 3:30 pm

4:15 pm - 12:00 am

## REGISTRATION FOR 3 - 12 YEAR OLDS

Meet the Youth Activities Team in Disney's Oceaneer Lab and Disney's Oceaneer Club, complete your registration & learn all about the Themed Experiences this cruise!



**CLUBHOUSE SERIES** - The Clubhouse Themed Experiences focus on movement and feature content which appeals to younger children. *Recommended for children seven years and younger.*



**STORYBOOK SERIES** - The Storybook Series Themed Experiences are designed with a strong connection to the Disney classic stories. *Recommended for children seven years and younger.*



**JUMP UP! SERIES** - The Jump Up! Themed Experiences will include large ground games & movement-oriented activities.



**CREATE & INVENT SERIES** - The Create & Invent Themed Experiences will have a tactile focus allowing children to create and admire their work.



**IN THE SPOTLIGHT SERIES** - The In The Spotlight Themed Experiences focus on children's stage presence with lots of activities and enthusiasm. *Recommended for children seven years and older.*



**SOLVE IT! SERIES** - The Solve It! Themed Experiences are less active, but will challenge children with problem/solutions-based activities. *Recommended for children seven years and older.*



**YOUTH ACTIVITIES OPEN HOUSE** - Activities for families, adults and children of all ages to enjoy together.

## DINE & PLAY

As a convenience for families dining at 8:15 pm, our Youth Activities Counselors will be available at 9:15 pm at the entrance of Lumiere's and Carioca's and at 9:30 pm at the entrance of Animator's Palate to bring registered children to join the fun in Disney's Oceaneer Club and Disney's Oceaneer Lab.

## YOUTH ACTIVITIES OPEN HOUSE

Open House is an opportunity for all to come and participate in a variety of exciting activities and free time in It's a Small World Nursery, Disney's Oceaneer Club, Disney's Oceaneer Lab, Edge and Vibe throughout the cruise. During these times secured programming will still be offered in the other venue for those looking to check their children into care.

Deck 9, Midship (7-5816)  
(11 - 14 years old)

12:30 pm - 3:30 pm  
4:15 pm - 1:00 am

Edge is an interactive play space where tweens can play video games, watch television and participate in arts and crafts with kids their own age.

## TAKING IT TO THE EDGE

10:00 pm

Come to Edge and get all the info you need to squeeze every bit of fun out of your stay onboard.



Deck 10, Midship (7-18517)  
(14 - 17 years old)

12:30 pm - 3:30 pm  
4:15 pm - 1:00 am

## THE DOWNLOAD

10:30 pm

Come up to Vibe and help plan all the fun activities you will be doing this cruise with your new friends!

# BUENA VISTA THEATRE

Deck 5, Aft

## Feature Movies this Voyage

### WEDNESDAY - MIAMI

5:15 pm	G	The Good Dinosaur Preview	
5:45 pm	PG	Cinderella (2015)	
8:30 pm	PG	Cinderella (2015)	
10:45 pm	PG	Ant-Man	Spanish Subtitles

### THURSDAY - DISNEY'S CASTAWAY CAY

8:30 am	PG	Inside Out	
10:30 am	PG	Cinderella (2015)	Spanish Subtitles
12:45 pm	PG-13	Ant-Man	Open Captioning
3:00 pm	G	The Good Dinosaur Preview	
3:30 pm	PG	Inside Out	DOLBY 3D
5:45 pm	PG-13	Ant-Man	
8:00 pm	G	The Good Dinosaur Preview	
8:30 pm	PG-13	Ant-Man	
10:45 pm	PG	Inside Out	DOLBY 3D

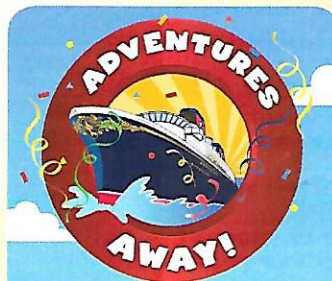
### FRIDAY - NASSAU

9:30 am	G	The Good Dinosaur Preview	
11:00 am	PG	Inside Out	Spanish Subtitles
1:00 pm	PG	Cinderella (2015)	
3:15 pm	PG-13	Bridge of Spies	DOLBY 3D
6:00 pm	PG	Inside Out	DOLBY 3D
8:15 pm	PG	Inside Out	
10:45 pm	PG-13	Bridge of Spies	

### SATURDAY - KEY WEST

8:30 am	PG	Inside Out	Open Captioning
11:00 am	G	The Good Dinosaur Preview	
11:45 am	PG-13	Ant-Man	
2:15 pm	PG-13	Bridge of Spies	Open Captioning
5:00 pm	PG-13	Bridge of Spies	
7:45 pm	PG-13	Bridge of Spies	
10:45 pm	PG-13	Ant-Man	DOLBY 3D

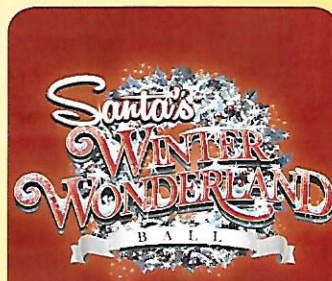
Subject to change.



## ADVENTURES AWAY!

Earn your status as V.I.P. sailors! Join your Cruise Director, Natalie, your Disney pals and your Cruise Staff as we officially begin your "Adventures Away."

Deck 9 Stage,  
Deck 9, Midship,  
4:30 pm



## HOLIDAY CELEBRATION

An evening of spectacle and holiday enchantment, join the Cruise Director and our holiday Snowbells as we celebrate the arrival of a very special holiday guest - Santa Claus! Get your cameras ready. You don't want to miss Santa and the World Famous Disney Characters as they create a Winter Wonderland...at sea!

Lobby Atrium,  
Deck 3, Midship,  
10:15 pm



# MORE TO ENJOY WHILE ONBOARD



## POPULAR HOME PORTS FOR LIMITED-TIME

In the fall of 2016, Disney Cruise Line will return to New York with sailings to the Bahamas, Miami with longer 7-night voyages for the very first time, and a return to Galveston, TX with a line-up of 7-night itineraries including a stop at Castaway Cay to round out the season. Visit Disney Vacation Planning, Deck 4, Midship, for more information.



## DISNEY VACATION CLUB® MEMBERS CELEBRATION

Members! Mix and mingle with other Members and learn how you can enhance your Membership! Please see a Disney Vacation Club representative on Deck 4, Midship, or call 7-2805 from your stateroom phone for more information.



## PORT AND SHOPPING INFORMATION

Don't miss your Port Shopping Guide Bridget's Shopping Ashore Presentation tomorrow at 5:15 pm in Promenade Lounge, Deck 3, Aft. Tune in to Channel 26-6 and get ready for the amazing Tax and Duty Free Shopping ashore opportunities that await you this cruise.



## THE RAINFOREST

Relax in the Rainforest, a thermal suite with various mild steam and saunas, a Hammam and sensory experience showers. For extra sensory perfection try the Rainforest DIY Scrub Experience, a custom-designed body polish to slough away dead skin in the Rainforest experience showers.

Couples Cruise Pass \$144

Single Cruise Pass \$101

Deck 9, Forward - Phone : 7-1465



Disney Cruise Line is in the holiday spirit! Visit the onboard shops for our festive assortment of holiday souvenirs including the Disney Cruise Line holiday themed pin, tree ornament, and t-shirt.

Disney Cruise Line® • 2015

DECK 4, FORWARD



## WELCOME ABOARD RAFFLE

View your Embarkation photos starting at 7:00 pm and enter our raffle for a chance to win 10 Digital Photos value of \$149.95. Winners must be present in Shutters, Deck 4, Aft at the 10:15 pm drawing tonight.

## Connect@Sea

We are now offering a NEW and improved Internet service to stay connected on your cruise like no other in the industry! Internet packages range from \$0.25 per MB - \$89.00 (1000 MB package). For more information contact your Connect@Sea Expert or Guest Services onboard. Possible service interruptions due to area configuration.

## ONBOARD AIRLINE CHECK IN

Stop by the Guest Services Desk, Deck 3, Midship to find out about enrolling in our Onboard Airline Check In Service.

## RELIGIOUS SERVICES

Groups who need a location to practice their faith may contact Guest Services for availability information.



Create the most memorable experiences during your Disney Cruise Line vacation with Port Adventures! Our Port Adventures are designed for you to see the best our ports have to offer. Stop by the Port Adventures Desk and our friendly team will be happy to assist you plan your adventure!

Port Adventures Desk, Deck 3, Midship.

## SHOPPING

### THE PIRATES LEAGUE

Shiver me timbers! Pirates are invading the Bibbidi Bobbidi Boutique tomorrow and are looking to transform you into a swashbuckling pirate to join their crew. Make your reservations by visiting Bibbidi Bobbidi Boutique, Deck 10, Forward or dialing extension 7-1492. Limited space available.

### BIBBIDI BOBBIDI BOUTIQUE

A makeover fit for a princess! Fairy Godmothers-in-Training are ready with magic and pixie dust to give your Prince and Princess the transformation of a lifetime. Make your reservations by visiting Bibbidi Bobbidi Boutique, Deck 10, Forward or dialing extension 7-1492. Limited space available.

### HELPFUL SHOPPING TIP

While shopping onboard, you may collect your items from both stores before proceeding to checkout at any register. No need to have to wait in line in each store to pay for your items separately! Mickey's Mainsail and White Caps, Deck 4, Forward.

### BELLARRI JEWELRY

Discover the colorful jewelry collections from BELLARRI, each piece designed as its own work of art, available in White Caps, Deck 4, Forward.

### GREAT REASON TO SHOP ONBOARD!

The Force is strong onboard Disney Cruise Line! Head to the onboard merchandise shops, Deck 4 Forward, where you can purchase a Disney Cruise Line Star Wars Backpack for \$17.95 with any merchandise purchase of \$50.00 or more. While supplies last. Offer subject to restrictions and change without notice.

### EXCLUSIVE STAR WARS THEMED MERCHANDISE

The Force is strong on the Disney Magic Cruise Ship! Choose your alliance and gear up with fun new Star Wars merchandise designed exclusively for Disney Cruise Line. Sea Treasures, Deck 3, Forward.

Due to port regulations, when the ship is docked, the stores will remain closed.

## IMPORTANT INFORMATION

### Security Notice

All Guests (including Children) who wish to disembark or embark the ship are required to present their Key to the World card at the gangway. A photo ID is also required for those Guests who are 18 years of age or older. Guests under the age of 18 are required to have a parent, guardian or other responsible adult sign an authorization form at the Guest Service Desk if they wish to go ashore unaccompanied or with any adult from another stateroom.

### Sunscreen/Insect Repellent Advisory

Use sunscreen first and protect against mosquito bites and related illnesses by applying insect repellent on top of sunscreen when going ashore. Insect repellent is available for purchase in White Caps.

### Cold and Flu Reminder

Please wash hands frequently and thoroughly, particularly before meals. Contact the Health Center by dialing 7-1923, should anyone in your party become ill.

### Inclement Weather

For the safety of all Guests, outdoor events may be changed due to unforeseen weather conditions.

### Corridor Quiet Hours

As a courtesy to all our Guests, please recognize quiet hallway hours from 10:00 p.m. til 8:00 a.m.

### Environmental Message

With Disney's commitment to the Environment please refrain from throwing anything over the Ship's side. Thank you.

### No Reserved Seats Policy

As a courtesy to all Guests we kindly advise that the saving of seats is not permitted in the Walt Disney Theatre, and the saving of the sun loungers is not permitted on Deck 9 and 10. Items left unattended will be returned to lost and found at Guest Services, Deck 3, Midship.

### Smoking

For the comfort of our guests, the following areas are designated as smoking areas:

- Deck 10 Forward, Starboard Side
- Deck 9, Forward, Starboard Side at Quiet Cove
- Deck 4, Starboard Side from 6:00 p.m. to 6:00 a.m. only (all of Deck 4 is non-smoking from 6:00 a.m. to 6:00 p.m.)

Smoking is prohibited inside all guest staterooms and on stateroom verandahs. Guests found smoking in their staterooms or on their verandahs will be charged a \$250 stateroom recovery fee.

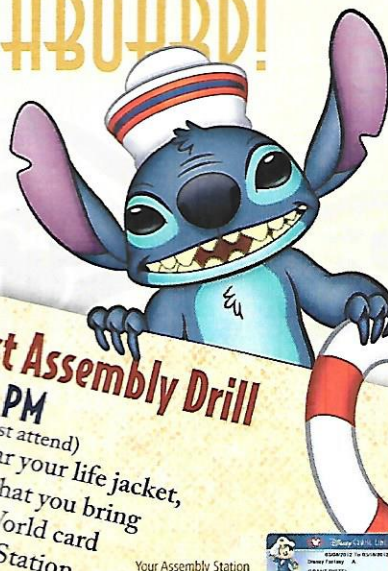
### Walt Disney Theatre

Theatrical performances may use artificial fog, strobe lights, pyrotechnics and other special effects. For the safety of our performers and the comfort of those around you, the use of any photography or video recording device or any electronic equipment is prohibited.

### Verandah Safety

Please do not leave any combustible materials on your balcony when not present in your stateroom for safety reasons.





Earn your status as V.I.P. sailors! Join your Cruise Director, Natalie, your Disney pals and your Cruise Staff as we officially begin your "Adventures Away."



Deck Stage,  
Deck 9, Midship,  
4:30 pm

**Mandatory Guest Assembly Drill**  
4:00 PM  
(All Guests must attend)  
You will not be allowed to leave the premises during the drill.

**4:00 PM**  
(All Guests must attend)  
You will not need to wear your life jacket,  
however it is critical that you bring  
your Key To The World card  
to your Assembly Station.  
All ship services will be suspended  
between 3:30 pm and 4:30 pm

Your Assembly Station  
is indicated on your  
Key To The World card



Afternoon	1:45	2:00	2:15	2:30	2:45	3:00	3:15	3:30	3:45	4:00	4:15	4:30	4:45	5:00	5:15	5:30	5:45	6:00	6:15	6:30	6:45
FUNNEL VISION			Poolside Jams with Cruise Staff DJ Deck 9 Stage												Poolside Jams with Cruise Staff DJ Deck 9 Stage		Brave (PG) Funnel Vision				
BUENA VISTA THEATRE															The Good Dinosaur Preview (G) Duration: 12 Minutes		Cinderella (2015) (PG) Duration: 1 Hour 52 Minutes				
CHARACTERS															Minnie Lobby Atrium (P)		Mickey Lobby Atrium (P)				
FUN FOR ALL AGES	Walking Ship Tour Preludes		 D Lounge - Members Celebration									 Deck 9 Stage			Donald DK4 Mid (S)		Pluto DK4 Mid (S)	Poolside Jams with Cruise Staff DJ Deck 9 Stage		 Walt Disney Theatre	
		Tour del Barco Preludes	Walking Ship Tour Preludes												Live Music with Soul Duo Promenade Lounge						
ADULTS						Spa Raffle (Senses Spa & Salon)						Acupuncture Tongue & Pulse Analysis Senses Spa & Salon			Complimentary Footprint Analysis Senses Spa & Salon						
VIBE 14-17 years old	Youth Activities Open House																				
EDGE 12-14 years old	Youth Activities Open House																				
OCEANVIEW CLUB 7-12 years old	Youth Activities Open House																				
OCEANVIEW CLUB 3-6 years old	Youth Activities Open House																				

All ship services will be suspended during this time for the mandatory Guest Assembly Drill scheduled for 4:00 p.m. along Deck 4.

Please refer to the posted drill instructions prior to heading to Deck 4.



Evening	7:00	7:15	7:30	7:45	8:00	8:15	8:30	8:45	9:00	9:15	9:30	9:45	10:00	10:15	10:30	10:45	11:00	11:15	11:30	11:45	12:00
FUNNEL VISION	Ratatouille (G) - en Español Funnel Vision													The Muppets (PG) Funnel Vision							
BIG SCREEN THEATRE	Cinderella (2015) (PG) Duration: 1 Hour 52 Minutes													Ant-Man (PG-13) - Spanish Subtitles Duration: 1 Hour 57 Minutes							
CHARACTERS				Mickey's Tree Lighting Magic Lobby Atrium	Mickey D&A Mid G																
					Minnie D&A Mid G																
FUN FOR ALL AGES				Bingo Pre-Sales	Mickey Mania D Lounge		TWICE CHARMED Walt Disney Theatre					Disney Trivia Promenade Lounge		Santa's Winter Wonderland Lobby Atrium			MICKEY MANIA! D Lounge		Family KARAOKE D Lounge		
						Diamond & \$500 Jackpot BINGO Fathoms						Live Music with Rob Sanders Lobby Atrium		Rob Sanders LIVE Lobby Atrium			Live Music with Duo Azucar Promenade Lounge				
ADULTS	Live Irish Music with Joanna & Pamela O'Gills Pub		Movie Quotes Trivia O'Gills Pub				Cruise Staff DJ Fathoms				Team Trivia O'Gills Pub		Ice Breakers Fathoms		MATCH MADE Fathoms		Cruise Staff DJ Fathoms				
			Live Piano with Aileen de la Cruz Keys								Rodrigo Figueroa LIVE Quiet Cove Pool		1920 Society: Start Blend it Taste it Cove Cafe				Joanna & Pamela LIVE O'Gills Pub				
TEENS (14-17) TEEN ONLY	Open for Teens		Meet Your Counselors				Chillin' in Vibe				Game Challenge		Ice Breakers		The Download		That's Hilarious				
TWEENS (10-14) TWEEN ONLY	Open for Tweens		Game Challenge				Chillin' in Edge		Profiles		Ice Breakers		Taking it to The Edge		Human Bingo		Gender Wars				
OCEANVIEW LAB 13-17 TEEN ONLY	Ice Breakers		Welcome Party 🍷		Human Bingo 🐻		Mickey Mania 🍷		Wacky Relays 🍷				GAGA Ball 🍷				Super Sloppy Science 🍷				
OCEANVIEW CLUB 10-14 TWEEN ONLY			Scavenger Hunt		Welcome Party 🍷		Make a Card for Someone Special				Toy Story Boot Camp 🍷		Picture This				Become Iron Man! 🍷				

 Symbol for activities that will be repeated during the cruise

[illegible]




























CLUBHOUSE SERIES  
STORMOVA SERIES

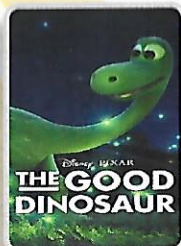


WEDNESDAY, NOVEMBER 11, 2015 - MIAMI, FLORIDA

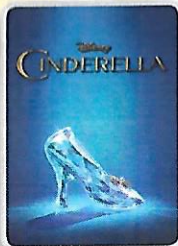
# BUENA VISTA THEATRE

Deck 5, Aft

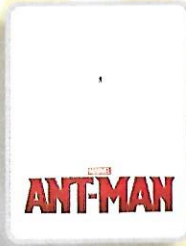
Spanish Subtitles



5:15 pm  
Duration: 12 mins  
Rating: G



5:45 pm & 8:30 pm  
Duration: 1 hr 52 mins  
Rating: PG



10:45 pm  
Duration: 1 hr 57 mins  
Rating: PG-13

## Character Meet & Greet Ticket Distribution

Port Adventures Desk, Deck 3, Midship - 12:00 pm - 3:00 pm

Pick up your tickets today to meet some of your favorite Disney friends

- Princess Gathering
- Frozen Meet & Greet

Tickets are required for each of these meet and greets. Space is limited.

## Character Appearances

### ADVENTURES AWAY

Deck 9 Stage - 4:30 pm

### MINNIE MOUSE

Lobby Atrium (P) - 5:15 pm  
DK4 Mid (S) - 8:15 pm

### DONALD DUCK

DK4 Mid (S) - 5:15 pm

### MICKEY MOUSE

Lobby Atrium (P) - 5:45 pm  
DK4 Mid (S) - 7:45 pm

### PLUTO

DK4 Mid (S) - 5:45 pm

### MICKEY'S TREE LIGHTING MAGIC

Lobby Atrium - 7:30 pm

### SANTA'S WINTER WONDERLAND BALL

Lobby Atrium - 10:15 pm



(P) - Port Side, (S) Starboard Side

Check here each day for Character appearances.

For detailed Character appearance information, see the Character Information Board in the Lobby Atrium.

Meet-and-Greets will be advertised for the length of time the line will be open. To avoid disappointment, please meet at start time of appearances.

## YOUTH ACTIVITIES THEMED EXPERIENCES

**CLIMBHOUSE SERIES**  
focuses on movement and features content which appeals to younger children.

**STORYBOOK SERIES**  
is designed with a strong connection to the Disney classic stories.

**RAMP UP! SERIES**  
includes large group games & movement-oriented activities.

**CREATE & INVENT SERIES**  
will have a tactile focus allowing children to create and admire their work.

**IN THE SPOTLIGHT SERIES**  
focuses on children's stage presence with lots of activities and enthusiasm.

**SCIENCE IT! SERIES**  
are less active, but will challenge children with problem/solutions-based activities.

### YOUTH ACTIVITIES OPEN HOUSE

A non-secured program with activities for families, adults and children of all ages to enjoy together.

## SHIP DIRECTORY

### YOUTH ACTIVITIES

DISNEY'S OCEANEER CLUB	DECK 5, MID	12:30 PM - 3:30 PM 4:15 PM - 12:00 AM
DISNEY'S OCEANEER LAB	DECK 5, MID	12:30 PM - 3:30 PM 4:15 PM - 12:00 AM
EDGE	DECK 9, MID	12:30 PM - 3:30 PM 4:15 PM - 1:00 AM
IT'S A SMALL WORLD NURSERY	DECK 5, AFT	12:30 PM - 3:30 PM 4:15 PM - 11:00 PM
VIBE	DECK 10, MID	12:30 PM - 3:30 PM 4:15 PM - 1:00 AM

### POOLS

\*Children under 12 years of age must have adult supervision in all pools.

AQUADUNK	DECK 10, MID	12:00 PM - 3:00 PM 6:00 PM - 9:00 PM
AQUALAB	DECK 9, AFT	12:00 PM - 3:30 PM 4:30 PM - 8:00 PM
GOOBY'S POOL	DECK 9, MID	12:00 PM - 3:30 PM 6:00 PM - 10:00 PM
NEPHEWS' SPLASH ZONE	DECK 9, AFT	12:00 PM - 3:30 PM 4:30 PM - 6:00 PM
QUIET COVE POOL (18+)	DECK 9, FWD	12:00 PM - 10:00 PM
Twist 'n' Spout	DECK 9, AFT	12:00 PM - 3:00 PM 4:30 PM - 9:00 PM

Complimentary pool vests are available for children to use in the pools onboard. They are located on the pool deck.

### RECREATION

PORT ADVENTURES DESK	DECK 3, MID	12:00 PM - 3:30 PM 4:30 PM - 8:30 PM
SENSES FITNESS CENTER (18+)	DECK 9, FWD	11:30 AM - 10:00 PM
WIDE WORLD OF SPORTS DECK	DECK 10, FWD	24 HOURS

### GENERAL INFORMATION

BUENA VISTA THEATRE	DECK 5, AFT	SHOWTIMES
DISNEY VACATION CLUB DESK	DECK 4, MID	5:30 PM - 10:00 PM
DISNEY VACATION PLANNING	DECK 4, MID	7:00 PM - 8:30 PM
FUNNEL VISION	DECK 9, MID	SHOWTIMES
GUEST SERVICES	DECK 3, MID	24 HOURS
HAIR BRAIDING	DECK 9, MID	7:00 PM - 9:00 PM
MEDICAL HEALTH CENTER	DECK 1, FWD	4:30 PM - 7:00 PM
PORT & SHOPPING DESK	DECK 3, MID	
PRELUDES	DECK 4, FWD	5:30 PM - 9:00 PM
SENSES SPA AND SALON	DECK 9, FWD	11:30 AM - 10:00 PM
SHUTTERS PHOTO GALLERY	DECK 4, AFT	6:30 PM - 10:30 PM
WALT DISNEY THEATRE	DECK 4, FWD	SHOWTIMES

### SHOPPING

BIBBIDI BOBBIDI BOUTIQUE	DECK 10, FWD	12:00 PM - 3:00 PM 5:00 PM - 9:00 PM
MICKEY'S MAINSAIL	DECK 4, FWD	6:00 PM - 11:00 PM
QUACKS	DECK 9, MID	12:30 PM - 3:00 PM 4:30 PM - 6:30 PM
SEA TREASURES	DECK 3, FWD	6:00 PM - 11:00 PM
VISTA GALLERY	DECK 4, MID	6:30 PM - 10:30 PM
WHITE CAPS	DECK 4, FWD	6:00 PM - 11:00 PM

## IMPORTANT NUMBERS

Fire/Security: 7-3001  
Medical EMERGENCY: 7-3000  
Health Center: 7-1923

## DINNER MENU

Animator's Palate: Pacific Rim Cuisine  
Carioca's: South American Cuisine  
Lumiere's: French Cuisine

## DRINK OF THE DAY

Bahama Mama  
(Alcoholic)  
Lava Smoothie  
(Non-Alcoholic)

## WEATHER FORECAST

Today: Partly Cloudy  
High 78°F/26°C  
Tomorrow: Partly Sunny  
High 80°F/27°C

Evening Attire: Cruise Casual

## DINING & LOUNGES

### LUNCH

CABANAS	DECK 9, AFT	12:00 PM - 3:15 PM
CARIOCA'S	DECK 3, AFT	11:45 AM - 2:15 PM
DAISY'S DE LITES	DECK 9, AFT	12:00 PM - 3:30 PM 4:15 PM - 6:00 PM
PEIE'S BOILER BITES	DECK 9, AFT	12:00 PM - 3:30 PM 4:15 PM - 6:00 PM
PINOCCHIO'S PIZZERIA	DECK 9, MID	12:00 PM - 3:30 PM 4:15 PM - 6:30 PM

### DINNER

ANIMATOR'S PALATE	DECK 4, AFT	5:45 PM & 8:15 PM
CARIOCA'S	DECK 3, AFT	5:45 PM & 8:15 PM
LUMIERE'S	DECK 3, MID	5:45 PM & 8:15 PM
PALO (FOR RESERVATIONS CALL 7-6843)	DECK 10, AFT	6:00 PM - 8:30 PM
PEIE'S BOILER BITES	DECK 9, AFT	6:00 PM - 10:00 PM

### LATE NIGHT SNACKS

O'GILLS PUB	DECK 3, FWD	10:45 PM - 11:30 PM
PINOCCHIO'S PIZZERIA	DECK 9, MID	9:30 PM - 12:00 PM
PROMENADE LOUNGE	DECK 3, AFT	10:45 PM - 11:30 PM

### ADDED FEATURES

EYE SCREAM	DECK 9, AFT	12:00 PM - 11:00 PM
BEVERAGE STATION	DECK 9, AFT	24 HOURS
ROOM SERVICE	DIAL 7-4330	24 HOURS

## ENTERTAINMENT - LOUNGES - BARS

Adults must be 21 and older to consume alcoholic beverages.

AFTER HOURS	DECK 3, FWD	(AFTER 9:00 PM, ADULTS ONLY)
COVE CAFE (18+)	DECK 9, MID	11:30 AM - 12:00 AM
D LOUNGE	DECK 4, MID	SHOWTIMES
FATHOMS (18+)	DECK 3, FWD	7:00 PM - 1:30 AM
FROZONE TREATS	DECK 9, AFT	11:30 AM - 6:00 PM
KEYS (18+)	DECK 3, FWD	6:00 PM - 12:00 AM
O'GILLS PUB (18+)	DECK 3, FWD	12:30 PM - 12:00 AM
PRELUDES	DECK 4, FWD	5:30 PM - 9:00 PM
PROMENADE LOUNGE	DECK 3, AFT	11:30 AM - 12:00 AM
PINOCCHIO'S PIZZERIA	DECK 9, MID	11:30 AM - 12:00 AM
SIGNALS (18+)	DECK 9, FWD	11:30 AM - 11:00 PM

Public Health Advisory: Consuming raw or undercooked meats, poultry, seafood, shellfish, or eggs may increase your risk for foodborne illness, especially if you have certain medical condition.



Explore and more with our carefully selected Port Adventures. Pass by the Port Adventures Desk, Deck 3, Midship to find out more.