

# PERSONAL NAVIGATOR

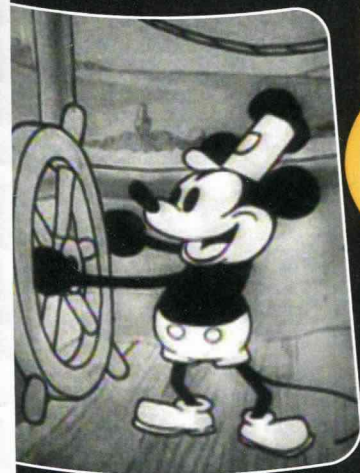


Sunrise: 7:31 am Sunset: 7:03 pm  
Evening Attire: Optional Dress Up

Today: Partly Sunny High: 82°F/28°C  
Tomorrow: Partly Cloudy High: 80°F/27°C

WEDNESDAY, OCTOBER 7, 2015

DAY AT SEA



## WALT & DISNEY The Dream Goes On



WALT DISNEY THEATRE

Deck 4, Forward

6:15 pm & 8:30 pm

As a courtesy to all Guests, we kindly advise that the saving of seats is **not** permitted in the Walt Disney Theatre.

Assistance available at the entrance to the Walt Disney Theatre 30 minutes prior to show time.

### HALLOWEEN ON THE HIGH SEAS CRUISES

*The Legend of the Pumpkin Tree*

Twice a long time ago...

Before the time of now, there was Halloween. Not the Halloween of today, filled with merriment and pranks, but a darker celebration. The night was filled with mystery. The moon seemed to shine a little bit brighter, and in every shadow lurked something unimaginable. This was the time of the Pumpkin King.

The Pumpkin King was the first caretaker of Halloween. He had a long, lanky, skeletal body with a round pumpkin for a head. His voice was deep, and his laugh could send shivers down the bravest of men's spines. Every year, he waited, designing frights for the one night of the year that was darker than the rest. He sailed through the night, spinning tales of mischief and the macabre. He was the thing under the bed, the eyes in the closet, the sound in the hall and the thing that went bump in the night.

But as the years grew on, the Pumpkin King grew weary. He needed someone to help him keep the history of his most beloved holiday. So he reached in his head and retrieved four pumpkin seeds, each one representing a different characteristic of his wicked personality. He planted them around and watched as the seed grew into beautifully morbid trees. The tree blooms only once a year. Deep within its dark, gnarled branches hold the remnant spirits of Halloween memories gone past.

A Caretaker tends to the trees. These Caretakers spin the tales of the many customs of Halloween. According to the legend, once everyone has learned the who, the what and the why, the spirit of the Pumpkin King will bring the tree to life.

### THE NIGHTMARE BEFORE CHRISTMAS

-SING AND SCREAM-

#### HALLOWEEN MOVIE SPECIAL

You're invited to a special presentation of Tim Burton's popular classic, presented in 3-D. Featuring state-of-the-art projection, sound and in-theatre effects, you become part of the experience. You never know who may show up.

Walt Disney Theatre,  
Deck 4, Forward,  
2:30 pm & 10:30 pm

(Doors open 15 minutes prior to show time)

### Don't Miss:

#### Captain's Signing

*White Caps, Deck 4, Forward - 12:30 pm*

Meet the Master of the Disney Magic and have your cruise memories signed.

#### Magic Workshop with John Cassidy

*Fathoms, Deck 3, Forward - 1:00 pm*

John Cassidy teaches the basics of magic in this fun family event.

#### So You Think You Know Your Family?

*D Lounge, Deck 4, Midship - 7:45 pm & 10:00 pm*

This fun-filled family game show is always full of surprises. Find out how well you know, or don't know your family!

#### Match Your Mate (18+)

*Fathoms, Deck 3, Forward - 10:15 pm*

It's time to play everyone's favorite couples game show, Match Your Mate!

#### Book Your Next Disney Vacation Today!

If you're thinking about booking a future Disney cruise or Adventures by Disney trip, visit the Disney Vacation Planning desk to save with special offers only available onboard! The last day of the cruise tends to get busy in the evening, so don't miss this opportunity to plan your next Disney vacation. Visit the Disney Vacation Planning desk on Deck 4, Midship, for more information.



### DINNER MENU

Animator's Palate : Pacific Rim Cuisine  
Carioca's : South American Cuisine  
Lumiere's : Pacific Rim Cuisine

### DRINK OF THE DAY

High Tide (Alcoholic)  
Espresso Chiller (Non-Alcoholic)

#### IMPORTANT NUMBERS

Fire/Security: 7-3001  
Medical Emergency: 7-3000  
Health Center: 7-1923



# ADULT ACTIVITY HIGHLIGHTS

## SENSES SPA FITNESS CLASSES & SEMINARS

*Sunrise Stretch* - Senses Spa Fitness Center - 7:00 am  
*Fab Abs* - Senses Spa Fitness Center - 7:30 am  
*Body Sculpt Boot Camp* (Nom. Fee) - Senses Spa Fitness Center - 8:00 am  
*Group Cycling* (Sign-Up Required) - Senses Spa Fitness Center - 9:00 am  
*Seminar: Chinese Herbal Remedies* - Senses Spa & Salon - 10:00 am  
*Secrets to a Flatter Stomach* - Senses Spa & Salon - 11:00 am  
*Ultimate Hair Cut Seminar* - Senses Spa Fitness Center - 12:00 pm  
*Good Feet: Relieving Back Pain* - Senses Spa & Salon - 2:00 pm  
*Acupuncture Tongue & Pulse Analysis* - Senses Spa & Salon - 4:00 pm  
*Pure Form Pilates* - Senses Spa Fitness Center - 5:00 pm

## TASTING CLASSES

*Chocolate & Liquor Tasting* (21+) - Keys - 12:00 pm  
*Stem to Stern Wine Tasting* (21+) - Keys - 1:30 pm  
*Mixology* (21+) - Keys - 3:00 pm  
*Martini Tasting* (21+) - Keys - 5:00 pm & 5:00 pm  
 Please make reservations for tastings at Guest Services for a nominal fee.  
 Tasting Seminars are only for Guests 21 and older..

## 1820 SOCIETY: LUNCH

*Lumiere's, Deck 3, Midship - 12:00 pm*  
 Get to know your fellow Society members over lunch.

## 1820 SOCIETY: JENGA CHALLENGE

*O'Gills Pub, Deck 3, Forward - 5:00 pm*  
 Have some fun with this classic game.

## NAPKIN FOLDING

*D Lounge, Deck 4, Midship - 9:45 am*  
 Learn how to fold a napkin to impress your guests at your next dinner party.

## ANYONE CAN COOK - APPLE STRUDEL

*D Lounge, Deck 4, Midship - 10:15 am*  
 From our galley to yours. Join our chefs as they show you how to prepare delicious dishes. Today's Menu - Apple Strudel.

## DISNEY'S INNOVATIONS: THEME PARKS

*O'Gills Pub, Deck 3, Forward - 1:45 pm*  
 Join us for our presentation showing the "Top 10" greatest innovations that the Walt Disney Company has introduced to theme parks.

## ART OF THE THEME SHOW TOUR

*Palo, Deck 10, Aft - 2:30 pm*  
 Join us on a guided ship tour and discover the key ingredients that make the Disney Magic one-of-a-kind.



# FUN FOR ALL AGES HIGHLIGHTS

## WAKE UP WITH DISNEY JUNIOR

*D Lounge, Deck 4, Midship - 8:30 am*  
 What happens when you experience unlimited fun with your favorite Disney Junior shows? You get an exciting dance party designed especially for preschoolers ages seven and under.

## \$10,000 MEGA JACKPOT BINGO

*Bingo Pre-Sales start at 10:30 am*  
*Fathoms, Deck 3, Forward - 10:45 am*  
 It's Big, it's Massive, it's Supersized! It's \$10,000 MEGA Jackpot Bingo! Take home \$10,000 if you can cover your card in 46 numbers or less. If not, we carry on to play for the biggest cash prize of the session, plus today's Disney Vacation Club sponsored raffle includes a \$100 Onboard Credit and prize-packs. Pre-Sales start 15 minutes prior to game.

## DISNEY VACATION CLUB GROUP PREVIEW

*D Lounge, Deck 4, Midship - 11:30 am & 4:30 pm*  
 Want to learn more about taking magical vacations year after year? Please see a Disney Vacation Club representative on Deck 4, Midship, or call 7-2805 from your stateroom phone for more information about our interactive group presentation.

## DISNEY MOVIE CHALLENGE POOLSIDE

*Deck 9 Stage, Deck 9, Midship - 12:15 pm*  
 So you like movies? And you like bingo? This deck party has them both! Come on out to watch all your favorite movie clips and just maybe your team will win the opportunity to choose the movie played by the pool today!

## GENERATION GAME

*Fathoms, Deck 3, Forward - 1:45 pm*  
 Join your Cruise Staff team for our kids vs. adults game show featuring a series of challenges and tasks. Who will be the champion in our battle of the generations?

## TOWEL FOLDING

*D Lounge, Deck 4, Midship - 2:00 pm*  
 Learn to create those amazing towel creatures you've seen in your stateroom all cruise long.

## FINAL JACKPOT BINGO

*Bingo Pre-Sales start at 3:15 pm*  
*Fathoms, Deck 3, Forward - 3:45 pm*  
 The snowball jackpot MUST BE WON at this final session! Beat the line and get your cards early. Who will be the lucky winner? It could be you! Pre-Sales start 30 minutes prior to game.

## SALUDOS AMIGOS FIESTA

*D Lounge, Deck 4, Midship - 10:45 pm*  
 Come see what Donald and his friends are up to this time. Bring the family out to this interactive dance party featuring fun Latin music! Your family will learn to salsa, merengue and just have a Latin good time!

## FAMILY SUPERSTAR KARAOKE

*D Lounge, Deck 4, Midship - 11:15 pm*  
 Join your Cruise Staff in D Lounge tonight and sing along to your favorite song - fun for everyone.





# YOUTH ACTIVITIES HIGHLIGHTS

## DINE & PLAY

As a convenience for families dining at 8:15 pm, our Youth Activities Counselors will be available at 9:15 pm at the entrance of Lumiere's and Carioca's and at 9:30 pm at the entrance of Animator's Palate to bring registered children to join the fun in Disney's Oceaneer Club and Disney's Oceaneer Lab.



**Deck 5, Aft (7-5864)**

**9:00 am - 11:00 pm**

Infants and Toddlers can enjoy toys and activities at It's a small world nursery. Reservations are first come, first served so please stop by!



**Deck 5, Midship (7-1439)**  
(3-12 years old)

**9:00 am - 12:00 am**

## TOY STORY BOOT CAMP

**11:00 am**

Join Corporal Green in our own version of boot camp as we learn how to have fun - The Toy Story way!

## FRIENDSHIP ROCKS

**5:00 pm**

Come and celebrate with all the children from the Oceaneer Club and Lab in the jammin' performance of Friendship Rocks! You won't want to miss any of the fun.



**Deck 5, Midship (7-1445)**  
(3-12 years old)

**9:00 am - 12:00 am**

## SUPER SLOPPY SCIENCE

**11:00 am & 7:30 pm**

Join Professor Make-O-Mess in some of the most extreme experiments you will ever see in the world of Super Sloppy Science!

## SPORTS DECK FUN

**2:30 pm**

Take over the Sports Deck with some fun and friendly competition.



**Deck 9, Midship (7-5816)**  
(11-14 years old)

**9:00 am - 1:00 am**

## GOOFY'S WORLD RECORDS

**10:30 am**

Compete in the Goofy-est games ever! Goofy and his pals have created a variety of games and contests for a wild time.

## ANYONE CAN COOK

**4:00 pm**

Anyone can cook as we work together to create some of our favorite treats.



**Deck 10, Midship (7-18517)**  
(14-17 years old)

**10:00 am - 2:00 am**

## GOTCHA

**12:00 pm**

You will try to eliminate your victim by various methods collecting points throughout the day, last person standing with the most points wins.

## KARAOKE

**1:00 am**

Grab your friends and warm up those vocal chords - it's time to sing!

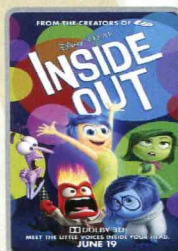
# BUENA VISTA THEATRE

Deck 5, Aft  
**Today's Movies**

**DOLBY 3D**

**Open Captioning**

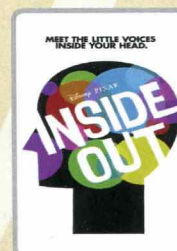
Spanish Subtitles



**8:30 am**  
Duration:  
1 hr 42 mins  
Rating: PG

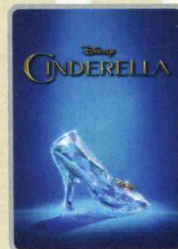


**10:45 am**  
Duration:  
1 hr 57 mins  
Rating: PG-13



**1:15 pm**  
Duration:  
1 hr 42 mins  
Rating: PG

**DOLBY 3D**



**3:15 pm**  
Duration:  
1 hr 52 mins  
Rating: PG



**5:30 pm & 8:15 pm**  
Duration:  
2 hrs 10 mins  
Rating: PG



**10:45 pm**  
Duration:  
2 hrs 22 mins  
Rating: PG-13



## HALLOWEEN CEREMONY

The Pumpkin Tree has bloomed, but one more surprise is in store for all of you. All ages are welcome to join us in the Atrium for some frightening fun as we celebrate Halloween with a spooky ceremony that will have you screaming with ghoulish delight.

**Lobby Atrium,  
Deck 3, Midship,  
7:30 pm**



## FAMILY VARIETY ACT

Featuring the Comedy & Magic of John Cassidy, as he entertains the entire family in this fun-filled show.

**Fathoms,  
Deck 3, Forward  
7:45 pm**

## YOUTH ACTIVITIES OPEN HOUSE

Open House is an opportunity for all to come and participate in a variety of exciting activities and free time in the Oceaneer Club, Oceaneer Lab, it's a small world nursery, Vibe and Edge throughout the cruise. During these times secured programming will still be offered in the other venue for those looking to check their children into care.

Edge: 9:00 am - 10:00 am & 6:30 pm - 7:30 pm  
Vibe: 10:00 am - 11:00 am & 7:30 pm - 8:30 pm

Disney's Oceaneer Club: 9:00 am - 10:30 am  
Disney's Oceaneer Lab: 2:30 pm - 4:00 pm



# MORE TO ENJOY WHILE ONBOARD



## ALASKA AWAITS

Take your family on an Alaskan adventure they'll never forget! Sail through magnificent fjords fed by glaciers. Discover untamed nature and walk in the footsteps of prospectors. Begin your adventure today! Visit the Disney Vacation Planning desk to learn more about our special onboard booking offer.



## DISNEY VACATION CLUB® GROUP PREVIEW

Want to learn more about taking magical vacations year after year? Please see a Disney Vacation Club representative on Deck 4, Midship, or call 7-2805 from your stateroom phone for more information about our interactive group presentation.

## EARLY FLIGHT INFORMATION

Should you have a flight out of the Miami International Airport prior to 11:30 am on debarkation morning kindly bring your airline tickets to Guest Services on Deck 3, Midship, for additional information and assistance.



**Deck 9, Forward - Phone : 7-1465**

## ACUPUNCTURE

Naturally effective for pain, arthritis, sea sickness, stress, digestion, weight loss, and much more. Let us help you enjoy your magical cruise and beyond.

1 session for \$150, 3 sessions for \$360



Choose your alliance and gear up with fun new Star Wars merchandise designed exclusively for Disney Cruise Line.

**AVAILABLE ONBOARD!  
DECK 3, FORWARD**



## LAST CHANCE FOR PROFESSIONAL PORTRAITS

Tonight is your last chance for professional portraits! Capture the magic of your vacation at one of our portrait studios and let the memories live on. Visit our Portrait Studios on Deck 3, Lobby Atrium.

5:15 pm - 6:00 pm, 7:15 pm - 8:30 pm & 9:30 pm - 10:15 pm

*\*Please note that photos are available for viewing on our interactive photo kiosks approximately five hours after being taken and are only available for purchase during this cruise*

## Connect@Sea

We are now offering a NEW and improved Internet service to stay connected on your cruise like no other in the industry! Internet packages range from \$0.25 per MB - \$89.00 (1000 MB package). For more information contact your Connect@Sea Expert or Guest Services onboard.

## TRANSPORTATION INFORMATION - LAST CHANCE

Today is your last chance to purchase transportation to the Miami International Airport. Please visit the Guest Services Desk, Deck 3, Midship.



Tomorrow we arrive at Disney's Castaway Cay! Disney's private island Castaway Cay not only offers a terrific family beach day, but many other excursions and rentals to complement Snorkelling, bike and float rentals, parasailing, plus much more, means that there is something for everyone at Disney's Castaway Cay. To make your reservations, visit the

**Port Adventures Desk, Deck 3, Midship**

## SHOPPING

### CAPTAIN'S SIGNING

Don't miss your chance to meet the Master of the Disney Magic! Stop by White Caps today at 12:30 pm where you can have your cruise mementos signed by our Captain. Deck 4, Forward.

### DISNEY CRUISE LINE STAR WARS MERCHANDISE

Head to Mickey's Mainsail where you'll discover the fun apparel items designed exclusively for Disney Cruise Line that are sure to excite Star Wars fans of any age! Deck 4, Forward.

### SOPHIA FIORI DIAMOND TRUNK SHOW

Sophia Fiori is an LA based designer, wholesaler, and one of Hollywood's favorite designers. Industry leaders in colored diamonds, and more specifically Caribbean blue diamonds - one of the single most popular purchases at sea because it reminds everyone of the colors of the Breathtaking Ocean! White Caps, Deck 4, Forward.

### PETITE ART PRINTS AT THE VISTA GALLERY

Are you an art lover on a budget? Do you have limited space in your suitcase or on your walls at home? There's no need to miss out on owning inspiring creations by some of Disney's greatest artists! Stop by the Vista Gallery and check out the various petite prints of artwork created by these celebrated artists. Deck 4, Midship.

## IMPORTANT INFORMATION

### Security Notice

All Guests (including Children) who wish to disembark or embark the ship are required to present their Key to the World card at the gangway. A photo ID is also required for those Guests who are 18 years of age or older. Guests under the age of 18 are required to have a parent, guardian or other responsible adult sign an authorization form at the Guest Service Desk if they wish to go ashore unaccompanied or with any adult from another stateroom.

**Sunscreen/Insect Repellent Advisory**  
Use sunscreen first and protect against mosquito bites and related illnesses by applying insect repellent on top of sunscreen when going ashore. Insect repellent is available for purchase in White Caps.

### Cold and Flu Reminder

Please wash hands frequently and thoroughly, particularly before meals. Contact the Health Center by dialing 7-1923, should anyone in your party become ill.

### Inclement Weather

For the safety of all Guests, outdoor events may be changed due to unforeseen weather conditions.

### Corridor Quiet Hours

As a courtesy to all our Guests, please recognize quiet hallway hours from 10:00 p.m. til 8:00 a.m.

### Environmental Message

With Disney's commitment to the Environment please refrain from throwing anything over the Ship's side. Thank you.

### No Reserved Seats Policy

As a courtesy to all Guests we kindly advise that the saving of seats is not permitted in the Walt Disney Theatre, and the saving of the sun loungers is not permitted on Deck 9 and 10. Items left unattended will be returned to lost and found at Guest Services, Deck 3, Midship.

### Smoking

For the comfort of our guests, the following areas are designated as smoking areas:

- Deck 10 Forward, Starboard Side
- Deck 9, Forward, Starboard Side at Quiet Cove
- Deck 4, Starboard Side from 6:00 p.m. to 6:00 a.m. only (all of Deck 4 is non-smoking from 6:00 a.m. to 6:00 p.m.)

Smoking is prohibited inside all guest staterooms and on stateroom verandahs. Guests found smoking in their staterooms or on their verandahs will be charged a \$250 stateroom recovery fee.

### Walt Disney Theatre

Theatrical performances may use artificial fog, strobe lights, pyrotechnics and other special effects. For the safety of our performers and the comfort of those around you, the use of any photography or video recording device or any electronic equipment is prohibited.

### Verandah Safety

Please do not leave any combustible materials on your balcony when not present in your stateroom for safety reasons.



 Symbol for activities that will be repeated during the cruise

Fold along the dotted lines and take me with you  
so you don't miss any of the fun!

CLUBHOUSE SERIES  
JUMP UP! SERIES  
CREATE & INVENT SERIES  
SOLVE IT! SERIES  
OPEN HOUSE



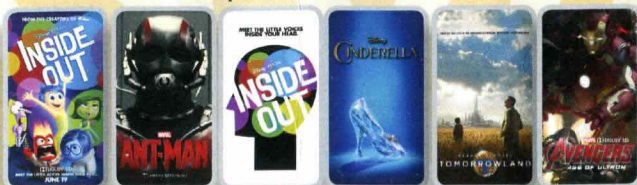
WEDNESDAY, OCTOBER 7, 2015 - DAY AT SEA

# BUENA VISTA THEATRE

Deck 5, Aft

Spanish Subtitles

DOLBY 3D Open Captioning DOLBY 3D



8:30 am Duration: 1 hr 42 mins Rating: PG	10:45 am Duration: 1 hr 57 mins Rating: PG-13	1:15 pm Duration: 1 hr 42 mins Rating: PG	3:15 pm Duration: 1 hr 52 mins Rating: PG	5:30 pm & 8:15 pm Duration: 2 hrs 10 mins Rating: PG	10:45 pm Duration: 2 hrs 22 mins Rating: PG-13
---	---	---	---	--	--

## Character Appearances

### DOC MCSTUFFINS

DK4 Mid (S)  
9:15 am & 3:30 pm

### PRINCESS SOFIA

DK4 Mid (S)  
9:45 am & 3:00 pm

### JAKE - THE NEVERLAND PIRATE

DK4 Mid (S)  
10:15 am & 4:00 pm

### CHARACTER DANCE PARTY

Lobby Atrium - 12:15 pm

### MINNIE MOUSE

Lobby Atrium (P) - 2:15 pm  
Preludes - 10:15 pm

### MICKEY MOUSE

Lobby Atrium (P) - 2:45 pm  
Preludes - 7:45 pm

### GOOFY

Lobby Atrium (P) - 3:15 pm  
Preludes - 9:45 pm

### PLUTO

Lobby Atrium (P) - 3:45 pm  
Preludes - 7:15 pm

### CHIP & DALE

Lobby Atrium (P) - 4:15 pm



(P) - Portside, (S) - Starboard Side

Don't forget your Camera to capture those Magical Moments!

Check here each day for Character appearances.

For detailed Character appearance information

see the Character Information Board in the Lobby Atrium.

Meet-and-Greets will be advertised for the length of time the line will be open. To avoid disappointment, please meet at start time of appearances.

## YOUTH ACTIVITIES THEMED EXPERIENCES

### CLUBHOUSE SERIES

focuses on movement and features content which appeals to younger children.

### STORYBOOK SERIES

is designed with a strong connection to the Disney classic stories.

### JUMP UP! SERIES

includes large group games & movement-oriented activities.

### CREATE & INVENT SERIES

will have a tactile focus allowing children to create and admire their work.

### IN THE SPOTLIGHT SERIES

focuses on children's stage presence with lots of activities and enthusiasm.

### SOLVE IT! SERIES

are less active, but will challenge children with problem/solutions-based activities.

### YOUTH ACTIVITIES OPEN HOUSE

Activities for families, adults and children of all ages to enjoy together.

## SHIP DIRECTORY

### YOUTH ACTIVITIES

DISNEY'S OCEANEER CLUB	DECK 5, MID	9:00 AM - 12:00 AM
DISNEY'S OCEANEER LAB	DECK 5, MID	9:00 AM - 12:00 AM
EDGE	DECK 9, MID	9:00 AM - 1:00 AM
IT'S A SMALL WORLD NURSERY	DECK 5, AFT	9:00 AM - 11:00 PM
VIBE	DECK 10, MID	10:00 AM - 2:00 AM

### POOLS

\*Children under 12 years of age must have adult supervision in all pools.

AQUADUNK	DECK 10, MID	9:00 AM - 11:45 AM
		12:05 PM - 9:00 PM
AQUALAB	DECK 9, AFT	8:30 AM - 8:00 PM
GOOFY'S POOL	DECK 9, MID	9:00 AM - 6:00 PM
		8:00 PM - 10:00 PM
NEPHEWS' SPLASH ZONE	DECK 9, AFT	8:30 AM - 6:00 PM
QUIET COVE POOL (18+)	DECK 9, FWD	8:00 AM - 10:00 PM
TWIST 'N' SPOUT	DECK 9, AFT	9:00 AM - 9:00 PM

Complimentary pool vests are available for children to use in the pools onboard.  
They are located on the pool deck.

### RECREATION

PORT ADVENTURES DESK	DECK 3, MID	10:00 AM - 5:00 PM
		7:00 PM - 8:30 PM
SENSES FITNESS CENTER (18+)	DECK 9, FWD	6:00 AM - 10:00 PM
WIDE WORLD OF SPORTS DECK	DECK 10, FWD	24 HOURS

### GENERAL INFORMATION

BUENA VISTA THEATRE	DECK 5, AFT	SHOWTIMES
DISNEY VACATION CLUB DESK	DECK 4, MID	8:30 AM - 11:00 AM
		6:00 PM - 10:00 PM
DISNEY VACATION PLANNING	DECK 4, MID	9:00 AM - 12:00 PM
		2:00 PM - 6:00 PM
		7:00 PM - 10:00 PM
FUNNEL VISION	DECK 9, MID	SHOWTIMES
GUEST SERVICES	DECK 3, MID	24 HOURS
HAIR BRAIDING	DECK 9, MID	10:00 AM - 12:00 PM
		1:00 PM - 6:00 PM
MEDICAL HEALTH CENTER	DECK 1, FWD	9:30 AM - 11:00 AM
		4:30 PM - 7:00 PM
PORT & SHOPPING DESK	DECK 3, MID	7:30 PM - 8:30 PM
PRELUDES	DECK 4, FWD	5:30 PM - 9:00 PM
SENSES SPA AND SALON	DECK 9, FWD	8:00 AM - 10:00 PM
SHUTTERS PHOTO GALLERY	DECK 4, AFT	10:00 AM - 10:00 PM
WALT DISNEY THEATRE	DECK 4, FWD	SHOWTIMES

### SHOPPING

BIBBIDI BOBBIDI BOUTIQUE	DECK 10, FWD	9:00 AM - 9:00 PM
MICKEY'S MAINSAIL	DECK 4, FWD	9:30 AM - 11:00 PM
QUACKS	DECK 9, MID	
SEA TREASURES	DECK 3, FWD	12:00 PM - 11:00 PM
VISTA GALLERY	DECK 4, MID	12:00 PM - 2:30 PM
		4:30 PM - 10:00 PM
WHITE CAPS	DECK 4, FWD	9:30 AM - 11:00 PM

<b>DINNER MENU</b>	Animator's Palate : Pacific Rim Cuisine	<b>DRINK OF THE DAY</b>	High Tide (Alcoholic)	<b>WEATHER FORECAST</b>	Today: Partly Sunny
	Carioca's : South American Cuisine		Espresso Chiller (Non-Alcoholic)		High: 82°F/28°C
	Lumiere's : Pacific Rim Cuisine				Tomorrow: Partly Cloudy
					High: 80°F/27°C

**Evening Attire: Optional Dress Up**

## DINING & LOUNGES

### BREAKFAST

CABANAS	DECK 9, AFT	7:30 AM - 11:30 AM
DAISY'S DE LITES	DECK 9, AFT	7:00 AM - 9:00 AM
LUMIERE'S (A-LA CARTE)	DECK 3, MID	8:30 AM - 10:00 AM

### LUNCH

CABANAS	DECK 9, AFT	11:45 AM - 2:15 PM
DAISY'S DE LITES	DECK 9, AFT	11:00 AM - 6:00 PM
LUMIERE'S (A-LA CARTE)	DECK 3, MID	12:00 PM - 1:30 PM
PALO (BRUNCH)	DECK 10, AFT	10:00 AM - 12:30 PM
PETE'S BOILER BITES	DECK 9, AFT	11:00 AM - 6:00 PM
PINOCCHIO'S PIZZERIA	DECK 9, MID	11:00 AM - 6:00 PM

### DINNER

ANIMATOR'S PALATE	DECK 4, AFT	5:45 PM & 8:15 PM
CABANAS TABLE SERVICE	DECK 9, AFT	6:30 PM - 8:30 PM
CARIOCA'S	DECK 3, AFT	5:45 PM & 8:15 PM
LUMIERE'S	DECK 3, MID	5:45 PM & 8:15 PM
PALO (FOR RESERVATIONS CALL 7-6843)	DECK 10, AFT	6:00 PM - 8:30 PM
PETE'S BOILER BITES	DECK 9, AFT	6:00 PM - 10:00 PM

### LATE NIGHT SNACKS

O'GILLS PUB	DECK 3, FWD	10:45 PM - 11:30 PM
PINOCCHIO'S PIZZERIA	DECK 9, MID	9:30 PM - 12:00 AM
PROMENADE LOUNGE	DECK 3, AFT	10:45 PM - 11:30 PM

### ADDED FEATURES

EYE SCREAM	DECK 9, AFT	11:00 AM - 11:00 PM
BEVERAGE STATION	DECK 9, AFT	24 HOURS
ROOM SERVICE	DIAL 7-4330	24 HOURS

### ENTERTAINMENT - LOUNGES - BARS

Adults must be 21 and older to consume alcoholic beverages.

AFTER HOURS	DECK 3, FWD	(AFTER 9:00 P.M. ADULTS ONLY)
COVE CAFE (18+)	DECK 9, MID	6:30 AM - 12:00 AM
D LOUNGE	DECK 4, MID	SHOWTIMES
FATHOMS (18+)	DECK 3, FWD	7:00 PM - 2:00 AM
FROZONE TREATS	DECK 9, AFT	10:00 AM - 6:00 PM
KEYS (18+)	DECK 3, FWD	6:00 PM - 12:30 AM
O'GILLS PUB (18+)	DECK 3, FWD	12:00 PM - 12:00 AM
PRELUDES	DECK 4, FWD	5:30 PM - 9:00 PM
PROMENADE LOUNGE	DECK 3, AFT	6:30 AM - 12:00 AM
PINOCCHIO'S PIZZERIA	DECK 9, MID	11:00 AM - 12:00 AM
SIGNALS (18+)	DECK 9, FWD	10:00 AM - 11:00 PM

Public Health Advisory: Consuming raw or undercooked meats, poultry, seafood, shellfish, or eggs may increase your risk for foodborne illness, especially if you have certain medical condition.

## IMPORTANT NUMBERS

Fire/Security:	7-3001
Medical EMERGENCY:	7-3000
Health Center:	7-1923