



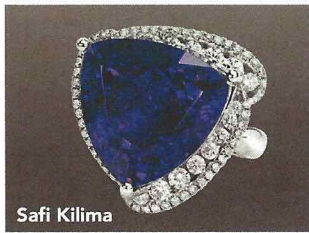
Hublot



Crown of Light



Corum



Safi Kilima



Zenith

# SKAGWAY

## PORT SHOPPING MAP

### Skagway Visitor's Bureau:

Located between 2nd and 3rd Ave in the Arctic Brotherhood Hall or NPS Visitor Center located on Broadway at 2nd Ave  
888-762-1898 • [www.skagway.com](http://www.skagway.com)

### Don't Forget Your:

- Port Shopping Map
- Photo ID & Key to the World Card
- FREE Diamond Charm Bracelet Card
- Cash and/or Credit Cards
- VIP Cards

### Docking/Anchorage:

If the ship drops anchor, you will be transported ashore by tender. If the ship docks at one of the 3 piers, you will be within walking distance of downtown.

### Port Adventures:

Check your ticket for the correct meeting time and location for your tour. Your Port Adventures Team will direct you to transportation.



## SHOPPING EVENTS ASHORE

Meet Port Shopping Guide Ashley and ask for your VIP shopping card.

STORE#

1a

### DIAMONDS INTERNATIONAL DIAMOND SHOPPING PARTY

with Ashley 8:00 – 10:00am

Live raffle at 9:30am for a Blue Diamond Bangle

3

### EFFY JEWELRY POWER HOUR

12:00 – 1:00pm

Three-prize Live Raffle starting at 12:30pm



## SKAGWAY OVERVIEW

Located at the northern end of the Inside Passage, Skagway (population approx. 860) was once the jumping-off point for gold seekers headed to the Yukon. At the height of the gold rush in the late 1890s, the makeshift town of tents and shacks had a population of 20,000. In Skagway, they bought supplies for the hellish trek overland to the Yukon gold fields. But the town provided more than provisions—there to tempt the miners were painted ladies, gambling houses and 80 saloons! These days, Skagway's "rushers" come in on cruise ships. Next to Juneau, Skagway is the most popular port in the Southeast Alaska (at least 500,000 passengers disembark each year). Much of Skagway has been painstakingly restored and designated as the Klondike Gold Rush National Historical Park. Although much of the town is now a replica of the real thing, every building along a two-block stretch of the main street was put up between 1897 and 1900.

**Capital:** Juneau, Alaska **Location:** Northern end

**Taxi:** Taxis available pierside

**Currency:** U.S. Dollar

**Language:** English

**Population:** Approximately 800

**Banking:** The National Bank of Alaska is located at 6th and Broadway, hours are Monday - Friday, 9:30am - 5pm

**Post Office:** The main post office in Skagway is located at Broadway and 6th next to the bank. Hours are 8:30am to 5pm, Monday through Friday and noon to 2pm on Saturday.

**Airport:** The Skagway Airport is located along the Skagway River near downtown.

### Participating stores have paid an advertising fee to participate in the program.

The stores on the map have agreed to provide you with a 60-day guarantee that is detailed in full on your shopping map.

This guarantee excludes buyer's remorse, loss, theft or buyer's negligence. **Many stores in port, including stores that do not participate in the program, offer their own guarantees.**



## THE STORES LISTED ON THIS MAP PRO



FIRST STOP! ➔

### 1a DIAMONDS INTERNATIONAL

#### **Large Selection of Loose Diamonds & Diamond Jewelry**

- Crown of Light: acclaimed 90-facet diamond starting at \$349
- Forevermark: with it's unique inscription, direct from the De Beers Group
- Recognized name: family owned since 1986 with over 125 locations
- **Crown of Skagway:** 7.7ct Crown of Light Chameleon diamond ring
- Jewelry Brands: Gift Collection and Safi Kilima
- Large selection of GIA/EGL certified loose and set diamonds from 3 to 10+ cts
- Lifetime upgrade policy: 100% credit towards a new diamond
- Graduate Gemologists on site to help you design the jewelry of your dreams
- ❖ Collect your free diamond charm bracelet with the exclusive Skagway charm

### 1b DIAMONDS INTERNATIONAL WATCH & DESIGN

#### **Make a Statement with our Elegant Designer Watches**

- Find the watch of your dreams: featuring the latest trends and styles
- Limited edition Crown of Light Hublot timepiece, "The Art of Fusion"
- Philip Stein: come "feel the difference," starting at \$595
- Watch brands: Bulova, Cartier, Chopard, Fendi, Hublot, Movado, Piaget, Philip Stein, TAG Heuer and Zenith
- Jewelry brands: Korite Ammolite and Kabana masterful inlay jewelry
- Expert staff: watch and jewelry experts on hand to guide you

### 2 TANZANITE INTERNATIONAL

#### **Large Selection of Loose Tanzanite and Safi Kilima Jewelry**

- Safi Kilima tanzanite collections: featuring Shira, Mawensi, Kibo and Milima
- Newest addition: ask about the stunning "Kilehe" collection for \$999
- Don't miss: Safi Kilima's "Blue Glacier" Shira studs starting at \$139
- Featuring: exceptional quality & color in rich purplish blues and deep lush lavender
- Large assortment of loose tanzanite from 1 to 100+ cts, available upon request
- Certificates of authenticity and/or EGL certificates offered with every loose stones
- Design your own custom piece to commemorate your cruise vacation

### 3 EFFY JEWELRY

#### **One of the Largest Manufacturers of Fine Jewelry in North America**

- DiVersa changeable collection: 2 gorgeous looks for the price of 1
- Color Diamond Experts: blue, yellow, black and brown starting at \$795
- Signature by Effy: panther-inspired designs in 14kt white, yellow and rose gold
- Tanzanite collection: tanzanite stud earrings starting at just \$95
- Lifetime warranty and photo appraisal with every purchase
- New York based customer service
- See your onboard shopping guide for a free pendant coupon

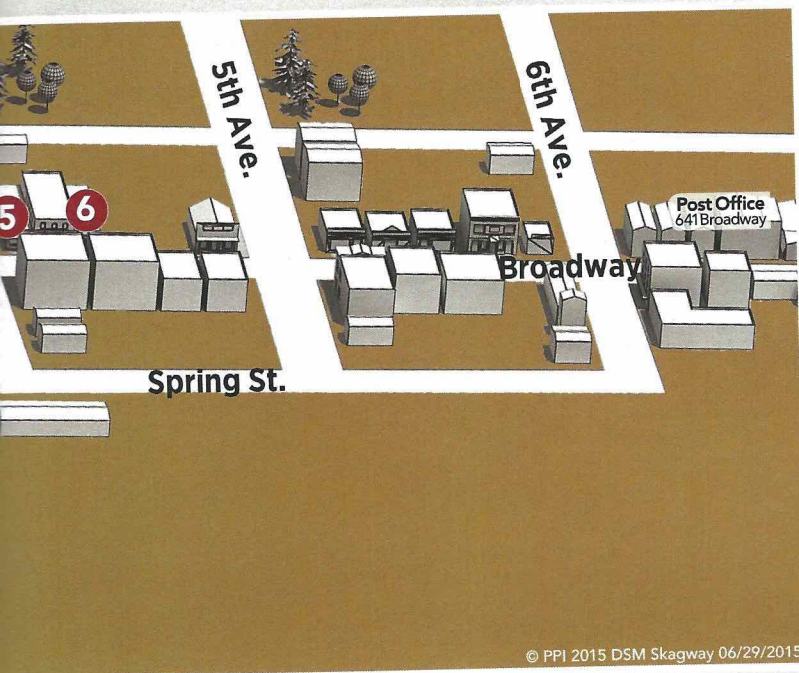
### 4 MILANO DIAMOND GALLERY

#### **The Destination for Affordable Luxury in Diamonds & Gemstones**

- Mark Henry collection of rare natural Alexandrite jewelry
- Exclusive destination for LeVian chocolate diamonds
- Emeryl is a rare, natural yellow beryl gemstone sourced in Brazil
- Discover the Philip Stein watch with natural frequency technology
- True Love, exquisite blue diamond jewelry collection
- Pick up your free poncho just for stopping by



DE A 60-DAY BUYER'S GUARANTEE.



## 5 DEL SOL

### **Products That Change Color in the Sun**

- Wow Guarantee: color-change guaranteed for life
- New Solize sunglasses: see glaciers glare-free; lifetime guarantee
- Alaska-themed products: shirts, hats, sweatshirts and nail polish
- Nail polish: more than 30 shades that change color with sunlight
- Free gift: exclusive Alaska tote bag with purchase of sunglasses

## 6 ALASKA CHRISTMAS STORE

### **Locally Owned Since 1984**

- Tremendous selection of Alaskan made ornaments
- Alaska made santas, nativities, snowmen and eskimo dolls
- Exclusive and signed "Precious Moments" Alaska dolls
- Selection of autographed children's books written and illustrated by Alaskans
- Must buy: autographed book of "When Grandma and Grandpa Visited Alaska"

## LUXURY BRAND LOCATOR

### **Luxury Watches & Jewelry – Authorized Retailers**

Cartier Watches Diamonds International Watch & Design  
 Forevermark Diamonds & Jewelry Diamonds International,  
 Tanzanite International, Diamonds International Watch & Design  
 Hublot Watches Diamonds International Watch & Design  
 Zenith Watches Diamonds International Watch & Design

### **Luxury Watches – Authorized Retailers**

Bulova Watches Diamonds International Watch & Design  
 Fendi Watches Diamonds International Watch & Design  
 Movado Watches Diamonds International Watch & Design  
 Philip Stein Watches Diamonds International Watch & Design,  
 Milano Diamond Gallery

### **Fine Diamonds & Designer Jewelry – Authorized Retailers**

Colored Diamonds by Effy Effy Jewelry  
 Crown of Light Diamonds & Jewelry Diamonds International,  
 Tanzanite International, Diamonds International Watch & Design  
 Dancing Diamonds by MDG Milano Diamond Gallery  
 DiVersa Collection by Effy Effy Jewelry  
 Emeryl Jewelry Milano Diamond Gallery  
 Gift Diamond Jewelry Diamonds International, Tanzanite International,  
 Diamonds International Watch & Design  
 Kabana Jewelry Tanzanite International,  
 Diamonds International Watch & Design  
 Korite Ammolite Jewelry Tanzanite International,  
 Diamonds International Watch & Design  
 Mark Henry Alexandrite Jewelry Milano Diamond Gallery  
 Safi Kilima Tanzanite Jewelry Diamonds International,  
 Tanzanite International, Diamonds International Watch & Design  
 Signature Jewelry by Effy Effy Jewelry  
 Unity Diamond Jewelry Milano Diamond Gallery

## SPIRIT OF SKAGWAY

SHOP IN THIS LOCAL BUSINESS AND ENJOY  
 A TRULY NATIVE EXPERIENCE!

### **6 ALASKA CHRISTMAS STORE**

Locally Owned Since 1984

### **In Case of Emergency:**

Cruise Line Agencies of Alaska  
 #1 Ore Dock Road  
 P.O. Box 729, Skagway, Alaska 99840  
 Ryan Huff and Jeremy Colyer  
 Tel: (907) 983-2815 Fax: (907) 983-2842  
 E-mail: skagway@claalaska.com





*The Champagne  
Diamond Collection.*

*That's Beautiful*

  
CROWN OF LIGHT®

*Available At*  
DIAMONDS INTERNATIONAL®

## PORT SHOPPING BUYER'S GUARANTEE

The Port Shopping Program is operated by PPI Group. The stores participating in the program provide a 60-day guarantee, from date of purchase, to Disney Cruise Line's guests. **This Guarantee is valid for repair or exchange. Buyer's remorse, buyer's negligence, and loss or theft are excluded from the Guarantee.** Please check your purchases and review all receipts and paperwork before leaving a store. If you need assistance regarding a purchase from a participating store during the cruise, please contact the onboard Shopping Guide. Guests must have an appraisal from an independent gemologist who is not affiliated with a retail jeweler to support a refund claim related to the value or quality of jewelry. For claims related to electronics and watches under warranty, guests should contact the manufacturer according to the instructions found inside the original packaging. Please do not mail merchandise without prior authorization from PPI Customer Service. Guests are responsible for appraisal costs and shipping of items to the store's Customer Service Department. Participating stores are responsible for shipping of items back to guests. For claims about purchases made at participating stores after the cruise, but within 60 days of the purchase date, please contact the Customer Service Department at PPI Group: 6261 NW 5th Way, Suite 100, Fort Lauderdale, FL 33309, Phone: 954-377-7777 or toll free: 1-888-774-4768, Email: [service@ppigroup.com](mailto:service@ppigroup.com). Participating stores have paid an advertising fee to participate in the program and many stores pay commissions based on sales to guests. Neither Disney Cruise Line nor PPI Group owns any of the stores participating in the program. Shopping Guides are contracted by PPI Group.

**Safety Ashore Information** While you will find many great experiences ashore, please remain vigilant about your personal safety and the safety of your belongings. As in any large urban tourist destination, you'll want to take some basic precautions to make the most of your time ashore.

- Be aware of your surroundings at all times. Avoid short cuts, narrow alleys and poorly lit streets.
- Avoid wandering from the main shopping and tourist areas into unfamiliar territory. If venturing out independently, have a plan, use only licensed taxi operators.
- Identity/Credit Card theft can occur anywhere. Please remain vigilant in monitoring the safe keeping of your personal information.
- Leave valuables in your room safe and avoid carrying large amounts of cash. Exercise caution when using ATMs. Cameras and handbags should be carried close to your body or concealed out of sight.
- Leave air transportation tickets and other travel documents in your room safe. When going ashore, each adult is required to carry a Driver's license, passport or other government-issued photo ID.

– Note: Some ports may require guests to carry passports ashore.

- Most crimes are easier to commit in dark unlit areas. When going ashore at night, please be extra vigilant about your personal safety.