



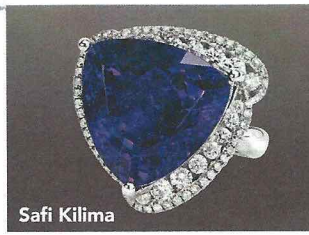
blot



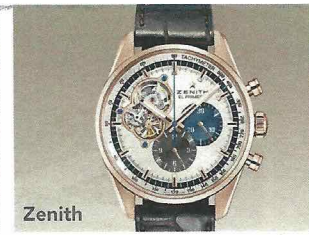
Crown of Light



Corum



Safi Kilima



Zenith

JUNEAU

PORT SHOPPING MAP

Juneau Visitor's Bureau:

800 Glacier Ave. Suite 201
Tel: (907) 586-2201
www.traveljuneau.com

Don't Forget Your:

- Port Shopping Map
- Photo ID & Key to the World Card
- FREE Diamond Charm Bracelet Card
- Cash and/or Credit Cards
- VIP Cards

Docking/Anchorage:

If the ship drops anchor, you will be transported ashore by tender. If the ship docks at one of the 3 piers, you will be within walking distance of downtown.

Port Adventures:

Check your ticket for the correct meeting time and location for your tour. Your Port Adventures Team will direct you to transportation.



SHOPPING EVENTS ASHORE

Meet Port Shopping Guide Ashley and ask for your VIP shopping card.

STORE#

1a

DIAMONDS INTERNATIONAL SHOPPING PARTY

with Ashley 12:00 – 1:00pm

Live Raffle at 1pm – raffling to win a Tanzanite Necklace

3

EFFY JEWELRY POWER HOUR

2:00 – 3:00pm



JUNEAU OVERVIEW

Nestled in a narrow fjord with Mt. Juneau and Mt. Roberts towering above it, Juneau (pop. 31,000) is an absolutely majestic setting. To the east is the vast expanse of glacial ice known as the Juneau Ice field, and to the west are the wilderness islands of the Inside Passage. Because of the natural beauty that surrounds the city—as well as its gold-rush buildings and many shops—this state capital is a popular tourist destination. In addition, Juneau is visited by more cruise ships than any other port in Southeast Alaska.

Gold brought the first big influx of people, who built Juneau on crushed rock hauled out of the mines in the 1880s. The gold rush gave people the possibility of becoming “instant Millionaires!”

For anybody interested the old red light district, is situated on South Franklin Street! Juneau has a lot of steep side streets this along with

the architecture were the inspiration for Juneau Nickname, “Little San Francisco or the North”

Capital: Juneau, Alaska

Location: Mainland, Southeast Alaska

Taxi: Taxis available pierside

Currency: U.S. Dollar

Language: English

Population: Approximately 31,000

Banking: Banks are open from 9am - 5pm, Monday-Friday.

Post Office: Located at 709 West 9th Street, open from 9am to 5pm Monday through Friday; closed Saturdays and Sundays

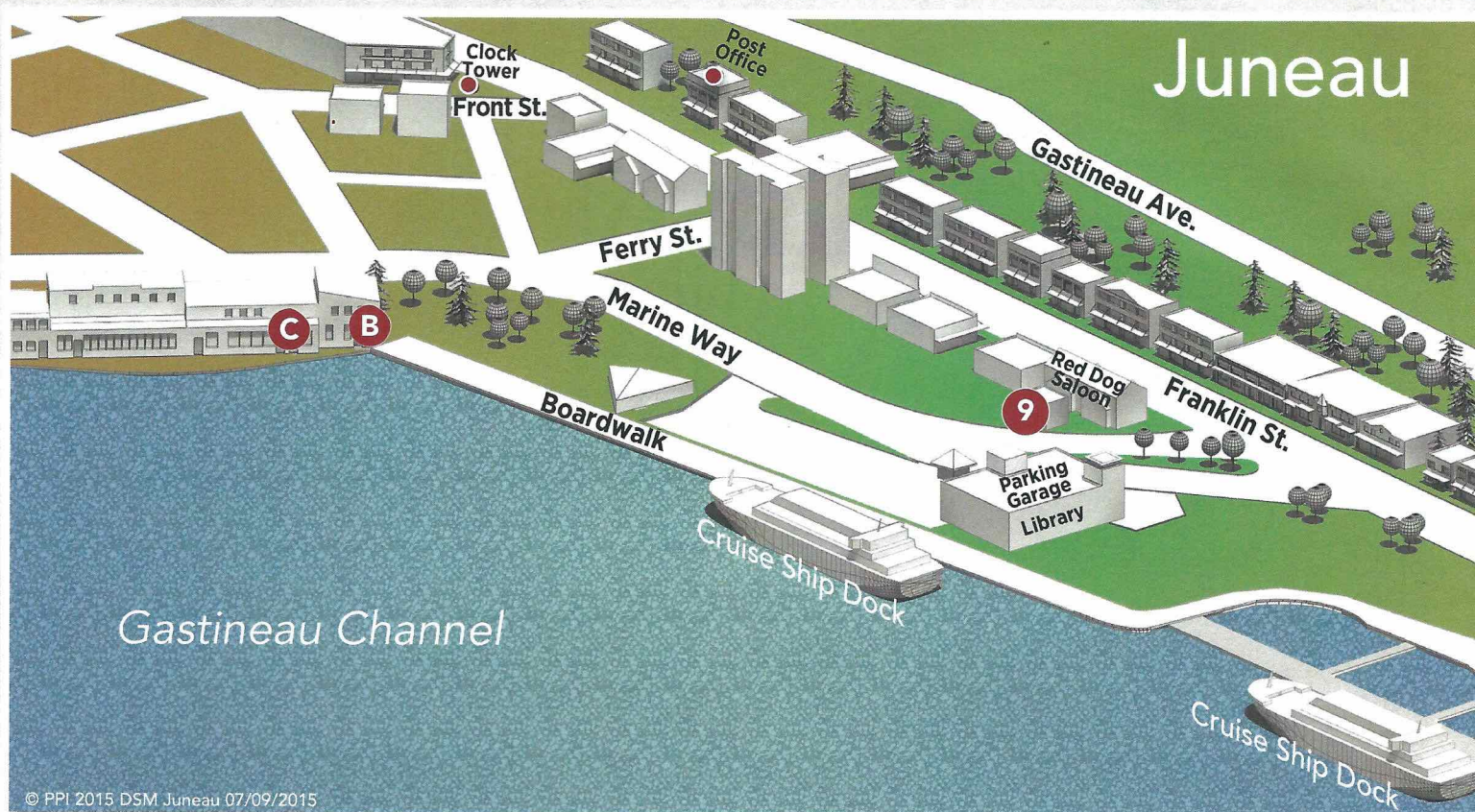
Airport: Juneau Airport is a 15 minute drive from the cruise ship pier

Participating stores have paid an advertising fee to participate in the program.

The stores on the map have agreed to provide you with a 60-day guarantee that is detailed in full on your shopping map.

This guarantee excludes buyer's remorse, loss, theft or buyer's negligence. **Many stores in port, including stores that do not participate in the program, offer their own guarantees.**

THE STORES LISTED ON THIS MAP PRO



© PPI 2015 DSM Juneau 07/09/2015

FIRST STOP

1a DIAMONDS INTERNATIONAL

Large Selection of Loose Diamonds & Diamond Jewelry

- Crown of Light: acclaimed 90-facet diamond starting at \$349
- Forevermark: with its unique inscription, direct from the De Beers Group
- Recognized name: family owned since 1986 with over 125 locations
- **Crown of Juneau:** 16.88ct Crown of Light/Forevermark IS1 loose diamond
- Jewelry Brands: Gift Collection and Safi Kilima
- Large selection of GIA/EGL certified loose and set diamonds from 3 to 10+ cts
- Lifetime upgrade policy: 100% credit towards a new diamond
- Graduate Gemologists on site to help you design the jewelry of your dreams
- ❖ Collect your free diamond charm bracelet with the exclusive Juneau charm

1b DIAMONDS INTERNATIONAL WATCH & DESIGN

Make a Statement with our Elegant Designer Watches

- Find the watch of your dreams: featuring the latest trends and styles
- Limited edition Crown of Light Hublot timepiece, "The Art of Fusion"
- Philip Stein: come "feel the difference," starting at \$595
- Watch brands: Bulova, Cartier, Chopard, Corum, Dior, Fendi, Hublot, Movado, Piaget, Philip Stein, TAG Heuer and Zenith
- Jewelry brands: Korite Ammolite and Kabana masterful inlay jewelry
- Expert staff: watch and jewelry experts on hand to guide you

2 TANZANITE INTERNATIONAL

Large Selection of Loose Tanzanite and Safi Kilima Jewelry

- Safi Kilima tanzanite collections: Shira, Mawensi, Kibo and Milima
- Ask about the newest Safi Kilima collection "Kilehe" for \$999
- Don't miss Safi Kilima's "Blue Glacier" Shira studs starting at \$139
- Discover tanzanite in rich purplish blues and deep lush lavender colors
- Large assortment of loose tanzanite 1 to 100+ cts available upon request
- Loose stones accompanied by certificates of authenticity and/or EGL certificates
- Design your own custom piece to commemorate your cruise vacation

3 EFFY JEWELRY

One of the Largest Manufacturers of Fine Jewelry in North America

- DiVersa changeable collection: 2 gorgeous looks for the price of 1
- Color Diamond Experts: blue, yellow, black and brown starting at \$795
- Signature by Effy: panther-inspired designs in 14kt white, yellow and rose gold
- Tanzanite collection: tanzanite stud earrings starting at just \$95
- Lifetime warranty and photo appraisal with every purchase
- New York based customer service
- See your onboard shopping guide for a free pendant coupon
- Endless Jewelry: mix and match bracelets and charms

4 MILANO DIAMOND GALLERY

The Destination for Affordable Luxury in Diamonds & Gemstones

- Exclusive destination for LeVian chocolate diamonds
- Mark Henry collection of rare natural Alexandrite jewelry
- Dancing Diamonds, see the newest innovation in diamond jewelry
- "Come Together Forever" featuring Unity Diamond Collection
- Beautiful selection of loose diamonds
- Pick up your free poncho just for stopping by

5 DEL SOL

Products that Change Color in the Sun

- Wow Guarantee: color-change guaranteed for life
- New Solize sunglasses: see glaciers glare-free; lifetime guarantee
- Alaska-themed products: shirts, hats, sweatshirts and nail polish
- Nail polish: more than 30 shades that change color with sunlight
- Free gift: exclusive Alaska tote bag with purchase of sunglasses

6 CARILOHA

Clothing, Bedding and Bath Goods Made of Bamboo

- Soft: bamboo is twice as soft as cotton – visit to feel for yourself
- Clean: bamboo is moisture wicking and odor-resistant
- Green: bamboo is one of the World's most sustainable resources
- Natural Insulator: bamboo keeps you warmer or cooler
- Bed and bath: ship World's Softest Sheets™ and towels home for free in the US
- Free gift: feel the bamboo difference – receive a free bamboo lei

7 BLUE DIAMOND

Philip Stein and Gold in Quartz by Orocal Boutiques

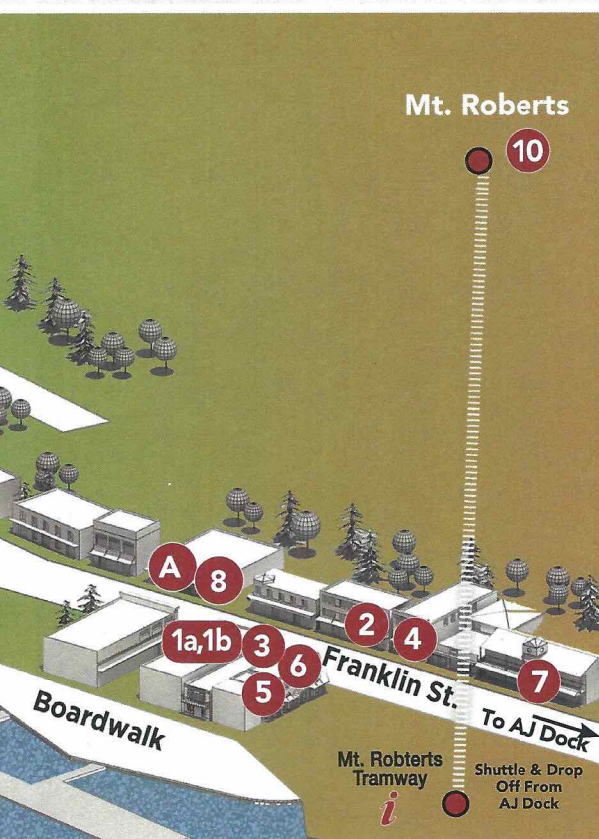
- Orocal Gold in Quartz from Alaska
- Mark Henry Alexandrite: exquisite, one of the world's rarest gemstones
- Emeryl: premium golden beryl gemstone
- Sandra Biachi colored diamonds and exotic gems from the Candy Case
- Watches: Philip Stein, Raymond Weil, Fendi, Shinola and more

8 HOUSE OF RUSSIA

Experience Alaska's Russian Connection

- Extensive selection of Matryoshka nesting dolls
- Amber, chess sets, lacquer boxes, glass vases and unique folk art
- Locally owned by a Juneau family for over 25 years

WIDE A 60-DAY BUYER'S GUARANTEE.



9 ALPACA INTERNATIONAL

From the Mountains of Peru to the Mountains of Alaska

- We are proud to guarantee our garments are made of 100% alpaca fibers
- Alpaca wool is 100% natural, hypoallergenic and eco-friendly
- The featherweight silky texture is light enough for all seasonal climates

10 RAVEN EAGLE GIFTS AND GALLERY

Take the Mount Roberts Tramway & Shop at the Top

- Authentic Alaskan made Native gifts and original art
- Hand-etched silver, wood carvings, baskets, clothing and souvenirs
- See master carver, Doug Chilton, working on site

LUXURY BRAND LOCATOR

Luxury Watches & Jewelry – Authorized Retailers

Cartier Watches Diamonds International Watch & Design
 Corum Watches Diamonds International Watch & Design
 Forevermark Diamonds & Jewelry Diamonds International,
 Tanzanite International, Diamonds International Watch & Design
 Hearts On Fire Blue Diamond
 Hublot Watches Diamonds International Watch & Design
 Zenith Watches Diamonds International Watch & Design

Luxury Watches – Authorized Retailers

Bulova Watches Diamonds International Watch & Design
 Fendi Watches Diamonds International Watch & Design, Blue Diamond
 Movado Watches Diamonds International Watch & Design
 Philip Stein Watches Diamonds International Watch & Design, Blue Diamond
 Raymond Weil Watches Blue Diamond
 Shinola Watches Blue Diamond

Fine Diamonds & Designer Jewelry – Authorized Retailers

Colored Diamonds by Effy Effy Jewelry
 Crown of Light Diamonds & Jewelry Diamonds International,
 Tanzanite International, Diamonds International Watch & Design
 Dancing Diamonds by MDG Milano Diamond Gallery
 DiVersa Collection by Effy Effy Jewelry
 Emeryl Jewelry Blue Diamond
 Endless Jewelry Effy Jewelry
 Gift Diamond Jewelry Diamonds International, Tanzanite International,
 Diamonds International Watch & Design
 Kabana Jewelry Tanzanite International,
 Diamonds International Watch & Design
 Korite Ammolite Jewelry Tanzanite International,
 Diamonds International Watch & Design
 Mark Henry Alexandrite Jewelry Blue Diamond, Milano Diamond Gallery
 Genuine Gold Quartz & Gold Nugget by Orocal Blue Diamond
 Safi Kilima Tanzanite Jewelry Diamonds International,
 Tanzanite International, Diamonds International Watch & Design
 Signature Jewelry by Effy Effy Jewelry
 Unity Diamond Jewelry Milano Diamond Gallery

SPIRIT OF JUNEAU

SHOP AT THESE LOCAL BUSINESSES & ENJOY
 A TRULY NATIVE EXPERIENCE!

8 HOUSE OF RUSSIA

Experience Alaska's Russian Connection

9 ALPACA INTERNATIONAL

Luxurious Alpaca Wool Garments and Accessories

10 RAVEN EAGLE GIFTS AND GALLERY

Take the Mount Roberts Tramway & Shop at the Top

A CARIBOU CROSSING

Featuring Over 60 Alaskan Artists

B ALASKA FISH & CHIPS

Authentic Alaska Fish & Chips

C CAPITAL CITY SMOKED SALMON

Smoked Salmon and Wild Game Sausages

In Case of Emergency:

Cruise Line Agencies of Alaska
 1330 Eastaugh Way • Juneau, AK 99802
 Tel: (907) 586-1282 • Cell: (907) 723-1214
 E-mail: Juneau@claalaska.com



*The Champagne
Diamond Collection.*

That's Beautiful


CROWN OF LIGHT®

Available At
DIAMONDS INTERNATIONAL®

PORT SHOPPING BUYER'S GUARANTEE

The Port Shopping Program is operated by PPI Group. The stores participating in the program provide a 60-day guarantee, from date of purchase, to Disney Cruise Line's guests. **This Guarantee is valid for repair or exchange. Buyer's remorse, buyer's negligence, and loss or theft are excluded from the Guarantee.** Please check your purchases and review all receipts and paperwork before leaving a store. If you need assistance regarding a purchase from a participating store during the cruise, please contact the onboard Shopping Guide. Guests must have an appraisal from an independent gemologist who is not affiliated with a retail jeweler to support a refund claim related to the value or quality of jewelry. For claims related to electronics and watches under warranty, guests should contact the manufacturer according to the instructions found inside the original packaging. Please do not mail merchandise without prior authorization from PPI Customer Service. Guests are responsible for appraisal costs and shipping of items to the store's Customer Service Department. Participating stores are responsible for shipping of items back to guests. For claims about purchases made at participating stores after the cruise, but within 60 days of the purchase date, please contact the Customer Service Department at PPI Group: 6261 NW 5th Way, Suite 100, Fort Lauderdale, FL 33309, Phone: 954-377-7777 or toll free: 1-888-774-4768, Email: service@ppigroup.com. Participating stores have paid an advertising fee to participate in the program and many stores pay commissions based on sales to guests. Neither Disney Cruise Line nor PPI Group owns any of the stores participating in the program. Shopping Guides are contracted by PPI Group.

Safety Ashore Information While you will find many great experiences ashore, please remain vigilant about your personal safety and the safety of your belongings. As in any large urban tourist destination, you'll want to take some basic precautions to make the most of your time ashore.

- Be aware of your surroundings at all times. Avoid short cuts, narrow alleys and poorly lit streets.
- Avoid wandering from the main shopping and tourist areas into unfamiliar territory. If venturing out independently, have a plan, use only licensed taxi operators.
- Identity/Credit Card theft can occur anywhere. Please remain vigilant in monitoring the safe keeping of your personal information.
- Leave valuables in your room safe and avoid carrying large amounts of cash. Exercise caution when using ATMs. Cameras and handbags should be carried close to your body or concealed out of sight.
- Leave air transportation tickets and other travel documents in your room safe. When going ashore, each adult is required to carry a Driver's license, passport or other government-issued photo ID.

- Note: Some ports may require guests to carry passports ashore.

- Most crimes are easier to commit in dark unlit areas. When going ashore at night, please be extra vigilant about your personal safety.