

# PERSONAL NAVIGATOR

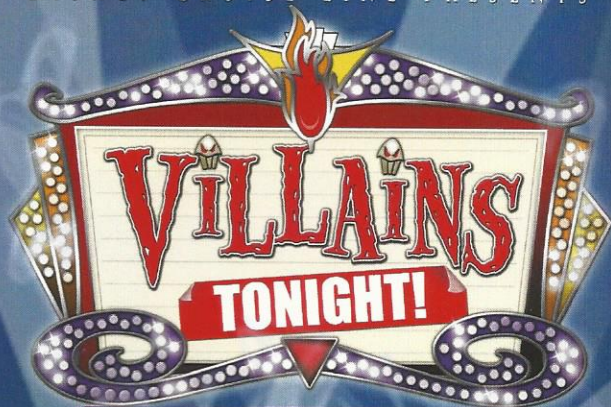


Sunrise 5:56 am Sunset: 5:57 pm  
 Evening Attire: Halloween/Cruise Casual  
 All Ashore: 7:00 am  
 All Aboard: 4:45 pm  
 Today: Sunny High: 82°F/28°C  
 Tomorrow: Cloudy High: 82°F/28°C

WEDNESDAY, OCTOBER 1, 2014

ST. GEORGE'S, GRENADA

DISNEY CRUISE LINE PRESENTS



WALT DISNEY THEATRE

Deck 4, Forward,  
 6:15 pm & 8:30 pm

As a courtesy to all Guests, we kindly advise that the saving of seats is **not** permitted in the Walt Disney Theatre.

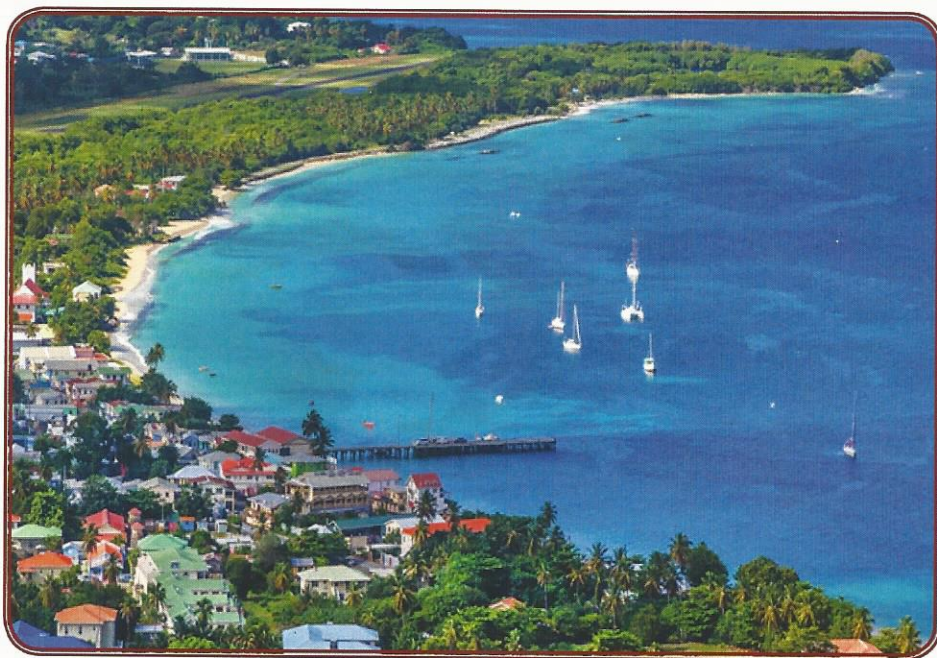


Assistance available at the entrance to the Walt Disney Theatre 30 minutes prior to show time.

## Welcome to St. George's, Grenada

Known as the "Island of Spice," Grenada is an island getaway you many never want to leave. Boasting rolling hills, rock-strewn terrain, pristine beaches and miles upon miles of unspoiled rainforest, this exotic island in the southeastern Caribbean Sea offers something for everyone.

Originally home to the Arawaks and then later to the Carib Indians, Grenada was "discovered" by Christopher Columbus in 1498. Due to the strong defense by the Caribs, it wasn't until the 17th century that the French finally settled the island. Battles waged between France and Britain until the British formally gained possession of the land in 1783. The British ruled the land until 1974 when Grenada gained independence.



### Disney Cruise Line PORT ADVENTURES

Check your port adventures tickets for your tour meeting time and location or availability and tour information. Stop by the Port Adventures Desk located on Deck 3 Midship where our team will be delighted to help you plan your vacation.

## DINNER MENU

Animator's Palate : Prince & Princess  
 Carioca's : Prince & Princess  
 Lumiere's : Prince & Princess

## DRINK OF THE DAY

Spooky Juice (Alcoholic)  
 Franken Fusion Colada (Non-Alcoholic)

## IMPORTANT NUMBERS

Fire/Security: 7-3001  
 Medical Emergency: 7-3000  
 Health Center: 7-1923

# ADULT ACTIVITY HIGHLIGHTS



**SENSES SPA FITNESS CLASSES & SEMINARS**  
*Morning Stretch* - Senses Spa Fitness Center - 7:30 am  
*Body Sculpt Boot Camp* - Senses Spa Fitness Center - 8:00 am  
*Yoga* - Senses Spa Fitness Center - 8:00 am  
*Group Cycling* - Senses Spa Fitness Center - 9:30 am  
*Acupuncture Pain Relief* - Keys - 5:00 pm

## TASTING CLASSES

*Beer Tasting* (21+) - O'Gills Pub - 4:30 pm  
Please make reservations for tastings at Promenade Lounge or Guest Services for a nominal fee.  
Tasting Seminars are only for Guests 21 and Older.

**CLUB 18\*21 - WII CHALLENGE**  
*O'Gills Pub, Deck 3, Forward - 5:30 pm*  
Come to challenge your new friends playing this fun video game.

**CLUB 18\*21 - MIXER**  
*Fathoms, Deck 3, Forward - 10:15 pm*  
Come join fellow cruisers your own age at our exclusive Club 18\*21 event.

## CRAFTS: HALLOWEEN

*O'Gills Pub, Deck 3, Forward - 2:30 pm*  
Time to get crafty and put your creative skills to use. Create a Haunted Halloween Craft that's yours to keep.

## ART OF THE THEME SHOW TOUR

*Palo, Deck 10, Aft - 4:00 pm*  
Join us on a guided ship tour and discover the key ingredients that make the Disney Magic. Reservations required. Please visit Guest Services or Port Adventures on Deck 3, Midship for reservation.

## VILLAINS QUOTE TRIVIA

*O'Gills Pub, Deck 3, Forward - 7:30 pm*  
"Off with their heads" - know the Villain who said this? The join us for our fun Disney Villain's quote trivia!



# FUN FOR ALL AGES HIGHLIGHTS

## XBOX CHALLENGE

*O'Gills Pub, Deck 3, Forward - 1:00 pm*  
Join your cruise staff for some Xbox fun!

## WHO AM I?

*Promenade Lounge, Deck 3, Aft - 2:00 pm*  
Join your Cruise Staff in a fun and hilarious game where our panel has to guess who they are.

## CRUISIN' FOR TRIVIA

*Promenade Lounge, Deck 3, Aft - 2:45 pm*  
Navigate your way through a round of questions testing your general knowledge.

## YOUTH ACTIVITIES OPEN HOUSE: ANYONE CAN COOK: CUPCAKES

*Disney's Oceaneer Lab, Deck 5, Midship - 3:30 pm*  
Anyone can cook as we work together to create some of our favorite treats. From our galley to yours; join our chef as they show you how to create cupcakes!

## CRAFTS: HALLOWEEN

*Promenade Lounge, Deck 3, Aft - 3:30 pm*  
Time to get crafty and put your creative skills to use. Create a Haunted Halloween Craft that's yours to keep.

## HALLOWEEN BINGO

*Bingo Pre-Sales start at 7:15 pm*  
*Fathoms, Deck 3, Forward - 7:30 pm*  
Join your Cruise Staff for family Bingo fun! Four cash prize games, great Halloween and Disney Cruise Line raffle prizes to be won. Don't miss out on the fun!  
Pre-Sales start 15 minutes prior to game.

## MAGIC WORKSHOP (6+)

*D Lounge, Deck 4, Midship - 7:30 pm*  
Magic Dave teaches you the basics of magic in this fun family event.

## SCARY-OKEE KARAOKE

*D Lounge, Deck 4, Midship - 9:30 pm & 10:45 pm*  
Scare up a little night music, when you and your family take to the stage and scream along to your favorite tunes.

## FAMILY HALLOWEEN BASH

*D Lounge, Deck 4, Midship - 10:15 pm*  
Join your Cruise Staff in this thrilling ghostly gathering, featuring live DJ and appearances from some of your favorite Disney Characters. Be prepared as you never know who will drop in for this frightfully fun Halloween Bash!

# YOUTH ACTIVITIES HIGHLIGHTS

## DINE & PLAY

As a convenience for families dining at 8:15 pm, our Youth Activities Counselors will be available at 9:15 pm at the entrance of Lumiere's and Carioca's and at 9:30 pm at the entrance of Animator's Palate to bring registered children to join the fun in Disney's Oceaneer Club and Disney's Oceaneer Lab.



**Deck 5, Aft (7-5864)**

**7:00 am - 11:00 pm**

Infants and Toddlers can enjoy toys and activities at It's a small world nursery. Reservations are first come, first served so please stop by!



**Deck 5, Midship (7-1439)**  
(3-12 years old)

**11:00 am - 12:00 am**

### BECOME IRON MAN!

**12:15 pm & 10:00 pm**

Do you want to be Iron Man? Marvel's Avengers Academy invites you to virtually suit up in Iron Man's armor for an exciting interactive training gauntlet.

### DRESS UP FUN

**4:00 pm**

Come join us and dress up as your favorite Princess, Superhero or Pirate!



**Deck 5, Midship (7-1445)**  
(3-12 years old)

**7:00 am - 11:00 pm**

### 4TH PIGS PASTA PALACE

**9:30 am**

Build your very own house made out of pasta and play-doh for Franco, the Fourth Little Pig, to see if it will withstand nature's forces.

### AROUND THE WORLD IN 7 DAYS

**11:00 am**

As budding Disney Imagineers you will be set the task of replicating world landmarks with a Disney twist.



**Deck 2, Midship (7-5816)**  
(11-14 years old)

**10:30 am - 1:00 am**

### CARDS TOURNAMENT

**12:00 pm**

Join your friends for a friendly game of cards.

### BRAINS AND BRAUNS

**2:00 pm**

You will compete against each other to solve clues, take part in physical challenges, and reach the finish first.



**Deck 10, Midship (7-18517)**  
(14-17 years old)

**12:00 pm - 2:00 am**

### BASKETBALL CHALLENGE

**5:00 pm**

Come join the ultimate basketball challenge!

### GENDER WARS

**8:00 pm**

Join us as we find out who really are the kings or queens of the castle.

# BUENA VISTA THEATRE

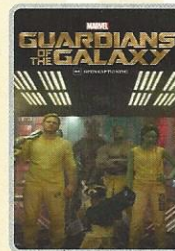
Deck 5, Aft  
Today's Movies  
en Español

**DOLBY 3D**



8:30 am  
Duration:  
1 hr 37 mins  
Rating: PG

**Open Captioning**

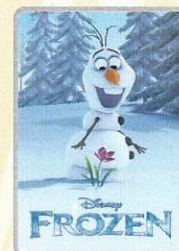


3:30 pm  
Duration: 2 hrs 2 mins  
Rating: PG-13



11:00 am  
Duration:  
1 hr 23 mins  
Rating: PG

**DOLBY 3D**



6:00 pm & 8:15 pm  
Duration: 1 hr 48 mins  
Rating: PG

**DOLBY 3D**



12:45 pm  
Duration:  
2 hrs 16 mins  
Rating: PG-13



10:30 pm  
Duration: 2 hrs 2 mins  
Rating: PG-13



## FAMILY HALLOWEEN PARTY

Enjoy a fun trick or treat "Mouse-Querade" featuring music, games, and of course treats. And expect a visit from some of your favorite Disney Pals who arrive just in time for the party, dressed in their Halloween costumes.

**Lobby Atrium,  
Deck 3, Midship,  
4:15 pm**



## ADULT THEME NIGHT

The trendy dance club for adults becomes the hangout for the dark side of Disney. With dramatic lighting cues, and amazing hit music, adult Guests are encouraged to flaunt their wild side and dress up. Trick or Treat isn't just for Kids.

**Fathoms (18+),  
Deck 3, Forward  
10:30 pm**

## YOUTH ACTIVITIES OPEN HOUSE

Open House is an opportunity for all to come and participate in a variety of exciting activities and free time in the Oceaneer Club, Oceaneer Lab, it's a small world nursery, Vibe and Edge throughout the cruise. During these times secured programming will still be offered in the other venue for those looking to check their children into care.

Edge: 10:30 am - 12:00 pm & 5:00 pm - 6:30 pm

Vibe: 12:00 pm - 1:30 pm & 6:00 pm - 7:30 pm

Disney's Oceaneer Club: 11:00 am - 2:30 pm

Disney's Oceaneer Lab: 3:00 pm - 6:00 pm

# MORE TO ENJOY WHILE ONBOARD



## NEW IN 2015!

Chart a magical new course for northern Europe - explore Norwegian fjords - steeped in Viking History from steaming geysers to scenic mountain ranges. Visit the Onboard Sales Desk for more information.



## DISNEY VACATION CLUB

Visit the Disney Vacation Club information desk and ask us about show times where you will learn how to turn every vacation into the vacation of a lifetime.



## PORT & SHOPPING INFORMATION

Don't miss seeing "The World's Most Perfectly Cut Diamond" at Milano Diamond Gallery store number 1 on your map. Don't forget to bring your shopping ashore maps, coupons and VIP cards!

## Connect @ Sea

We are now offering a NEW and improved Internet service to stay connected on your cruise like no other in the industry! Internet packages range from \$0.25 per MB - \$89.00 (1000 MB package). For more information contact your Connect@Sea Expert or Guest Services onboard.

## EARLY FLIGHT INFORMATION

Should you have a flight out of the San Juan airport prior to 11:30 am on debarkation morning kindly bring your airline tickets to Guest Services on Deck 3, Midship, for additional information and assistance.

## TRANSPORTATION INFORMATION

Should you wish to purchase transportation to the San Juan airport, kindly proceed to Guest Services on Deck 3, Midship, for further assistance.



## 20/20/20

Combine any of the following 3 services:

20 Minute Back, Neck, & Shoulder Massage, 20 Minute Foot & Ankle Massage, 20 Minute Hydrating Facial, 20 Minute Devil's Mint Back Scrub, 20 Minute Frangipani Scalp Massage.

Any 3 for \$119

**Deck 9, Forward - Phone : 7-1465**



Known as the "Island of Spice," Grenada is an island getaway you may never want to leave. Boasting rolling hills, rock-strewn terrain, pristine beaches and miles upon miles of unspoiled rainforest, this exotic island in the southeastern Caribbean Sea offers something for everyone. Stop by our Port Adventures desk on Deck 3, Midship, where our friendly team will assist you with any last minute port adventure bookings!

## SHOPPING

### RED CARPET SOPHIA FIORI DIAMOND UNVEILING

Drop in at White Caps today to meet the diamond specialist with Sophia Fiori. Whether you are a Hollywood celebrity or a full time Mom, every woman experiences a Red Carpet Moment when putting on Sophia Fiori Jewelry so treat yourself, you deserve it! Deck 4, Forward.

### DISNEY CRUISE LINE® DOONEY & BOURKE HANDBAGS

Swing by White Caps and commemorate your cruise with style with the new nautical themed Disney Cruise Line® Dooney & Bourke handbag collection. Deck 4, Forward.

### ERNST BENZ WATCHES

Manufactured in Switzerland and made in the time honored tradition of aviation timekeepers and the fine art of watch making, these large formats, self-winding instruments are renowned for their accuracy, durability and legibility. Stop by White Caps to see our full collection today! Deck 4, Forward.

### SWAROVSKI

Crystal glass from Austria that exceeds all others in terms of quality and elegance. Boxed jewelry pieces now available in White Caps, Deck 4, Forward.

### BEAUTIFULLY DISNEY

Captivate your mind with Beautifully Disney, a new collection of cosmetics and beauty product. Beautifully Disney defines timeless beauty through collections of fairytale nostalgia, unlocking harmonious colors. Through the collections of this new and enchanting line, it is the goal to keep you romanced by the contrast of mysterious yet inviting colors. Available at White Caps, Deck 4, Midship.

### OFFICER PIN TRADING

Come and trade pins with the Officers of the Disney Magic Cruise Ship at 7:15 pm in Preludes, Deck 4, Forward.

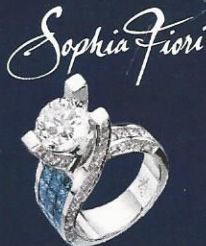
Due to port regulations, when the ship is docked, the stores will remain closed.

### SOPHIA FIORI DIAMOND TRUNK SHOW

Dazzling Diamonds,  
Tantalizing Tanzanite and  
many other Jewels.

**WHITECAPS**

**Deck 4, Forward**



## LIFESTYLE PORTRAITS

The most popular family portraiture on board. We capture your personality with fun and excitement. Portrait set times are listed everyday in your daily Personal Navigator.

## IMPORTANT INFORMATION

### Security Notice

All Guests (including Children) who wish to disembark or embark the ship are required to present their Key to the World card at the gangway. A photo ID is also required for those Guests who are 18 years of age or older. Guests under the age of 18 are required to have a parent, guardian or other responsible adult sign an authorization form at the Guest Service Desk if they wish to go ashore unaccompanied or with any adult from another stateroom.

### Sunscreen/Insect Repellent Advisory

Use sunscreen first and protect against mosquito bites and related illnesses by applying insect repellent on top of sunscreen when going ashore. Insect repellent is available for purchase in White Caps.

### Cold and Flu Reminder

Please wash hands frequently and thoroughly, particularly before meals. Contact the Health Center by dialing 7-1923, should anyone in your party become ill.

### Inclement Weather

For the safety of all Guests, outdoor events may be changed due to unforeseen weather conditions.

### Corridor Quiet Hours

As a courtesy to all our Guests, please recognize quiet hallway hours from 10:00 p.m. til 8:00 a.m.

### Environmental Message

With Disney's commitment to the Environment please refrain from throwing anything over the Ship's side. Thank you.

### No Reserved Seats Policy

As a courtesy to all Guests we kindly advise that the saving of seats is not permitted in the Walt Disney Theatre, and the saving of the sun loungers is not permitted on Deck 9 and 10. Items left unattended will be returned to lost and found at Guest Services, Deck 3, Midship.

### Smoking

For the comfort of our guests, the following areas are designated as smoking areas:  
• Deck 10 Forward, Starboard Side  
• Deck 9, Forward, Starboard Side at Quiet Cove  
• Deck 4, Starboard Side from 6:00 p.m. to 6:00 a.m. only (all of Deck 4 is non-smoking from 6:00 a.m. to 6:00 p.m.)  
Smoking is prohibited inside all guest staterooms and on stateroom verandahs. Guests found smoking in their staterooms or on their verandahs will be charged a \$250 stateroom recovery fee.

### Walt Disney Theatre

Theatrical performances may use artificial fog, strobe lights, pyrotechnics and other special effects. For the safety of our performers and the comfort of those around you, the use of any photography or video recording device or any electronic equipment is prohibited.

### Verandah Safety

Please do not leave any combustible materials on your balcony when not present in your stateroom for safety reasons.

Morning	8:30	8:45	9:00	9:15	9:30	9:45	10:00	10:15	10:30	10:45	11:00	11:15	11:30	11:45	12:00	12:15	12:30	12:45	1:00	1:15	1:30
FUNNEL VISION	Robin Hood (G) Funnel Vision						The Lion King (G) Funnel Vision						Hercules (G) Funnel Vision								
BUENA VISTA THEATRE	Maleficent (PG) Duration: 1 Hour 37 Minutes						Planes: Fire and Rescue (PG) - en Español Duration: 1 Hour 23 Minutes						Captain America: The Winter Soldier (PG-13) Duration: 2 Hours 16 Minutes								
CHARACTERS	Chip & Dale Dk 4, Mid			Minnie Dk 4, Mid			Pluto Dk 4, Mid														
FUN FOR ALL AGES							Memory Wall Disney's Oceaneer Club			Become Iron Man! Disney's Oceaneer Club			Xbox Challenge O'Gills Pub								
ADULTS	Friends of Bill W. Keys						Group Cycling Senses Spa Fitness Center														
VIBE 14-17 YEARS OLD							Youth Activities Open House														
EDGE 11-14 YEARS OLD							Youth Activities Open House						Cards Tournament								
OCEANEER LAB 3-12 YEARS OLD	Movie Time			4th Pigs Pasta Palace			Around the World in 7 days			Lunch			Sports Deck Fun								
OCEANEER CLUB 3-12 YEARS OLD							Youth Activities Open House						Memory Wall			Become Iron Man!					

Afternoon	1:45	2:00	2:15	2:30	2:45	3:00	3:15	3:30	3:45	4:00	4:15	4:30	4:45	5:00	5:15	5:30	5:45	6:00	6:15	6:30	6:45
FUNNEL VISION	The Little Mermaid (G) Funnel Vision						The Emperor's New Groove (G) Funnel Vision						Toy Story (G) - en Español Funnel Vision						Wreck-It Ralph Funnel Vision		
BUENA VISTA THEATRE							Guardians of the Galaxy (PG-13) Duration: 2 Hours 2 Minutes						Frozen (PG) Duration: 1 Hour 48 Minutes								
CHARACTERS	Mickey Gazebo			Goofy Gazebo			Pluto Gazebo			Cpt. Hook Dk 4, Mid						Pluto Dk 4, Mid					
FUN FOR ALL AGES	Who Am I? Promenade Lounge			Cruisin' for Trivia Promenade Lounge			Crafts: Halloween Promenade Lounge			Halloween Games Mickey's Mousecade Party Lobby Atrium			Live Music with The Dreamers Lobby Atrium			Live Piano with Balazs Peci Promenade Lounge			VILLAINS TONIGHT! Walt Disney Theatre		
ADULTS	The Royal Ball Disney's Oceaneer Club			Crafts: Halloween O'Gills Pub			Art of the Theme Show Tour Palo			Live Music with Rodrigo Figueroa Quiet Cove Pool			Acupuncture Clinic Keys			Club 18*21 Wii Challenge O'Gills Pub					
VIBE 14-17 YEARS OLD							Scavenger Hunt						Basketball Challenge			Youth Activities Open House					
EDGE 11-14 YEARS OLD	Brains and Brawns			Tween Choice			Youth Activities Open House						Basketball Challenge								
OCEANEER LAB 3-12 YEARS OLD	Youth Activities Open House						Anyone Can Cook			Halloween Crafts			Dinner								
OCEANEER CLUB 3-12 YEARS OLD	Youth Activities Open House			Aloha Luau			Dress Up Fun			Marvel Avengers Academy											

Evening	7:00	7:15	7:30	7:45	8:00	8:15	8:30	8:45	9:00	9:15	9:30	9:45	10:00	10:15	10:30	10:45	11:00	11:15	11:30	11:45	12:00
FUNNEL VISION							Monsters, Inc. (G) Funnel Vision						The Haunted Mansion (PG) Funnel Vision								
BUENA VISTA THEATRE							Frozen (PG) Duration: 1 Hour 48 Minutes						Guardians of the Galaxy (PG-13) Duration: 2 Hours 2 Minutes								
CHARACTERS	Minnie Lobby Atrium (P)		Mickey Lobby Atrium (P)		Cpt. Hook Lobby Atrium (P)		Minnie Lobby Atrium (P)		Chip & Dale Dk 4, Mid		Pluto Dk 4, Mid		Donald Lobby Atrium (P)		Mickey Lobby Atrium (P)		Donald Lobby Atrium (P)				
FUN FOR ALL AGES	Bingo Pre-Sales Fathoms		Halloween BINGO Fathoms		VILLAINS TONIGHT! Walt Disney Theatre		Scary-Okee Karaoke D Lounge		Family Halloween Bash D Lounge		Scary-Okee Karaoke D Lounge		Live Music with Latin Swing Promenade Lounge		Live Music with Latin Swing Promenade Lounge						
ADULTS	Villains Quote Trivia O'Gills Pub		Tribute to Sinatra with Nick Messina Keys		Live Piano with Balazs Peci Keys		Creepy Cabaret with The Screamers Fathoms		Halloween IS/T II Just For Kids Fathoms		DJ Matt Fathoms		Rodrigo Figueroa LIVE O'Gills Pub								
VIBE 14-17 YEARS OLD	Open House		Smoothie Hour		Gender Wars		Pump It Up		Dodgeball												
EDGE 11-14 YEARS OLD	Basketball Challenge		Super Sloppy Science		Wii Challenge		That's Hilarious		Halloween Bash												
OCEANEER LAB 3-12 YEARS OLD	Monstropolis Most Wanted		GAGA Ball		Lights, Camera, Improv!																
OCEANEER CLUB 3-12 YEARS OLD	Halloween Bash		Scavenger Hunt		Become Iron Man!																

Symbol for activities that will be repeated during the cruise



FOLD

Fold along the dotted lines and take me with you so you don't miss any of the fun!

FOLD

- IN THE SPOTLIGHT SERIES
- SOLO (IT) SERIES
- WUP! UP! SERIES
- CREATE & INVENT SERIES
- OPEN HOUSE
- CLUBHOUSE SERIES
- STORYBOOK SERIES

WEDNESDAY, OCTOBER 1, 2014 - ST. GEORGE'S, GRENADA

# BUENA VISTA THEATRE

Deck 5, Aft

en Español  
**DOLBY 3D** **DOLBY 3D** **Open Captioning**



8:30 am Duration: 1 hr 37 mins Rating: PG	11:00 am Duration: 1 hr 23 mins Rating: PG	12:45 pm Duration: 2 hrs 16 mins Rating: PG-13	3:30 pm Duration: 2 hrs 2 mins Rating: PG-13	6:00 pm & Duration: 8:15 pm Rating: PG	10:30 pm Duration: 2 hrs 2 mins Rating: PG-13
---	--	--	--	--	---

## Character Appearances

### CHIP & DALE

Deck 4, Midship  
9:00 am, 8:00 pm  
& 10:15 pm

### MINNIE MOUSE

Deck 4, Midship  
9:30 am  
Lobby Atrium (P)  
7:15 pm & 9:30 pm

### PLUTO

Deck 4, Midship  
10:00 am, 6:00 pm  
& 10:45 pm  
Gazebo - 3:00 pm

### MICKEY MOUSE

Gazebo - 2:30 pm  
Lobby Atrium (P)  
7:45 pm & 10:00 pm

### GOOFY

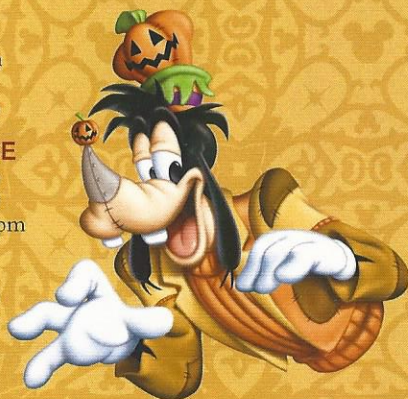
Gazebo - 3:30 pm

### CAPTAIN HOOK

Deck 4, Midship - 5:30 pm  
Lobby Atrium (P) - 8:15 pm

### DONALD DUCK

Deck 4, Midship - 7:30 pm  
Lobby Atrium (P) - 10:30 pm



(P) - Portside, (S) - Starboard Side

Don't forget your Camera to capture those Magical Moments!

Check here each day for Character appearances.

For detailed Character appearance information see the Character Information Board in the Lobby Atrium.

Meet-and-Greets will be advertised for the length of time the line will be open. To avoid disappointment, please meet at start time of appearances.

## YOUTH ACTIVITIES THEMED EXPERIENCES

**CLUBHOUSE SERIES** focuses on movement and features content which appeals to younger children.

**JUMP UP! SERIES** includes large group games & movement-oriented activities.

**IN THE SPOTLIGHT SERIES** focuses on children's stage presence with lots of activities and enthusiasm.

**STORYBOOK SERIES** is designed with a strong connection to the Disney classic stories.

**CREATE & INVENT SERIES** will have a tactile focus allowing children to create and admire their work.

**SOLVE IT! SERIES** are less active, but will challenge children with problem/solutions-based activities.

### YOUTH ACTIVITIES OPEN HOUSE

Activities for families, adults and children of all ages to enjoy together.

## SHIP DIRECTORY

### YOUTH ACTIVITIES

DISNEY'S OCEANEER CLUB	DECK 5, MID	11:00 AM - 12:00 AM
DISNEY'S OCEANEER LAB	DECK 5, MID	7:00 AM - 11:00 PM
EDGE	DECK 2, MID	10:30 AM - 1:00 AM
IT'S A SMALL WORLD NURSERY	DECK 5, AFT	7:00 AM - 11:00 PM
VIBE	DECK 10, MID	12:00 PM - 2:00 AM

### POOLS

\*Children under 12 years of age must have adult supervision in all pools.

AQUADUNK	DECK 10, MID	1:00 PM - 9:00 PM
AQUALAB	DECK 9, AFT	9:00 AM - 10:00 PM
GOOFY'S POOL	DECK 9, MID	10:00 AM - 6:00 PM 8:00 PM - 10:00 PM
NEPHEWS' SPLASH ZONE	DECK 9, AFT	9:00 AM - 6:00 PM
QUIET COVE POOL (18+)	DECK 9, FWD	6:00 AM - 12:00 AM
TWIST 'N' SPOUT	DECK 9, AFT	12:00 PM - 9:00 PM

### RECREATION

PORT ADVENTURES DESK	DECK 3, MID	6:30 AM - 10:00 AM 7:00 PM - 8:30 PM
SENSES FITNESS CENTER (18+)	DECK 9, FWD	6:30 AM - 10:00 PM
WIDE WORLD OF SPORTS DECK	DECK 10, FWD	24 HOURS

### GENERAL INFORMATION

BUENA VISTA THEATRE	DECK 5, AFT	SHOWTIMES
DISNEY VACATION CLUB DESK	DECK 4, MID	5:00 PM - 10:00 PM
ONBOARD SALES DESK	DECK 4, MID	4:00 PM - 6:00 PM 7:30 PM - 8:30 PM 9:30 PM - 10:30 PM
FUNNEL VISION	DECK 9, MID	SHOWTIMES
GUEST SERVICES	DECK 3, MID	24 HOURS
HAIR BRAIDING	DECK 9, MID	4:00 PM - 6:00 PM 7:00 PM - 10:00 PM
MEDICAL HEALTH CENTER	DECK 1, FWD	9:30 AM - 11:00 AM 4:30 PM - 7:00 PM
PORT & SHOPPING DESK	DECK 3, MID	7:00 PM - 9:00 PM
PRELUDES	DECK 4, FWD	5:30 PM - 9:00 PM
QUARTER MASTERS (ARCADE)	DECK 9, MID	24 HOURS
SENSES SPA AND SALON	DECK 9, FWD	8:00 AM - 10:00 PM
SHUTTERS PHOTO GALLERY	DECK 4, AFT	5:00 PM - 11:00 PM
WALT DISNEY THEATRE	DECK 4, FWD	SHOWTIMES

### SHOPPING

MICKEY'S MAINSAIL	DECK 4, FWD	5:30 PM - 11:00 PM
QUACKS	DECK 9, MID	
SEA TREASURES	DECK 3, FWD	5:30 PM - 11:00 PM
VISTA GALLERY	DECK 4, MID	6:00 PM - 10:00 PM
WHITE CAPS	DECK 4, FWD	5:30 PM - 11:00 PM

## IMPORTANT NUMBERS

Fire/Security:	7-3001
Medical EMERGENCY:	7-3000
Health Center:	7-1923

## DINNER MENU

Animator's Palate : Prince & Princess  
 Carioca's : Prince & Princess  
 Lumiere's : Prince & Princess

## DRINK OF THE DAY

Spooky Juice  
 (Alcoholic)  
 Franken Fusion Colada  
 (Non-Alcoholic)

## WEATHER FORECAST

Today: Sunny  
 High: 82°F/28°C  
 Tomorrow: Cloudy  
 High: 82°F/28°C

Evening Attire: Halloween or Cruise Casual

## DINING & LOUNGES

### BREAKFAST

CABANAS	DECK 9, AFT	6:30 AM - 11:30 AM
DAISY'S DE LITES	DECK 9, AFT	6:00 AM - 8:15 AM
LUMIERE'S (À-LA CARTE)	DECK 3, MID	8:00 AM - 9:30 AM

### LUNCH

CABANAS	DECK 9, AFT	11:30 AM - 3:00 PM
DAISY'S DE LITES	DECK 9, AFT	11:00 AM - 6:00 PM
LUMIERE'S (À-LA CARTE)	DECK 3, MID	12:00 PM - 1:30 PM
PETE'S BOILER BITES	DECK 9, AFT	11:00 AM - 6:00 PM
PINOCCHIO'S PIZZERIA	DECK 9, MID	11:00 AM - 6:00 PM

### DINNER

ANIMATOR'S PALATE	DECK 4, AFT	5:45 PM & 8:15 PM
CABANAS TABLE SERVICE	DECK 9, AFT	6:30 PM - 8:30 PM
CARIOCA'S	DECK 3, AFT	5:45 PM & 8:15 PM
LUMIERE'S	DECK 3, MID	5:45 PM & 8:15 PM
PALO (FOR RESERVATIONS CALL 7-6843)	DECK 10, AFT	6:00 PM - 8:30 PM
PETE'S BOILER BITES	DECK 9, AFT	6:00 PM - 10:00 PM

### LATE NIGHT SNACKS

O'GILLS PUB	DECK 3, FWD	10:45 PM - 11:45 PM
PINOCCHIO'S PIZZERIA	DECK 9, MID	9:30 PM - 12:00 AM
PROMENADE LOUNGE	DECK 3, AFT	10:45 PM - 11:45 PM

### ADDED FEATURES

EYE SCREAM	DECK 9, AFT	11:00 AM - 11:00 PM
BEVERAGE STATION	DECK 9, AFT	24 HOURS
ROOM SERVICE	DIAL 7-4330	24 HOURS

### ENTERTAINMENT - LOUNGES - BARS

Adults must be 21 and older to consume alcoholic beverages.

AFTER HOURS	DECK 3, FWD	(AFTER 9:00 PM, ADULTS ONLY)
COVE CAFE (18+)	DECK 9, MID	6:30 AM - 12:00 AM
D LOUNGE	DECK 4, MID	SHOWTIMES
FATHOMS (18+)	DECK 3, FWD	7:00 PM - 2:00 AM
FROZONE TREATS	DECK 9, AFT	10:30 AM - 6:00 PM
INTERNET CAFE	DECK 3, AFT	24 HOURS
KEYS (18+)	DECK 3, FWD	5:30 PM - 12:30 AM
O'GILLS PUB (18+)	DECK 3, FWD	3:00 PM - 12:30 AM
PRELUDES	DECK 4, FWD	5:30 PM - 9:00 PM
PROMENADE LOUNGE	DECK 3, AFT	9:00 AM - 12:30 AM
PINOCCHIO'S PIZZERIA	DECK 9, MID	9:30 AM - 12:00 AM
SIGNALS (18+)	DECK 9, FWD	10:00 AM - 12:00 AM

Public Health Advisory: Consuming raw or undercooked meats, poultry, seafood, shellfish, or eggs may increase your risk for foodborne illness, especially if you have certain medical condition.

All Ashore: Approx. 7:00 am  
 All Aboard: 4:45 pm

### Ship's Agent In Grenada

Laurence A Duncan/Director - Services Division  
 Geo. F. Huggins & Co. (Grenada) Ltd. Caranage  
 St. George's, Grenada, W.I.  
 Phone: (473)-440-2032 ext 2303 ~ Fax: (473)-440-9447