

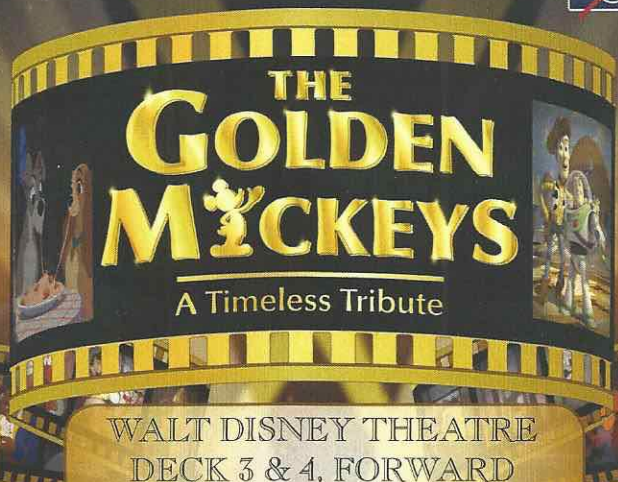
# PERSONAL NAVIGATOR

FRIDAY, SEPTEMBER 11, 2015

Sunrise: 7:06 am Sunset: 7:35 pm  
Evening Attire: Cruise Casual  
All Aboard: 3:45 pm

Today: Cloudy High: 84°F/29°C  
Tomorrow: Partly Sunny High: 86°F/30°C

PORT CANAVERAL, FLORIDA



WALT DISNEY THEATRE  
DECK 3 & 4, FORWARD

6:15 pm & 8:30 pm

As a courtesy to all Guests, we kindly advise that the saving of seats is **not** permitted in the Walt Disney Theatre.



Assistance available at the entrance to the Walt Disney Theatre 30 minutes prior to show time.

**PATRIOT DAY**

## Welcome Aboard!

### Your Stateroom & Luggage

Staterooms will be ready at 1:30 pm. Stateroom hosts will deliver luggage throughout the day until 5:30 pm.

### Staterooms with Bunk Beds

Bunk beds are recessed into the ceiling and will be prepared during evening turndown service by your Stateroom Host/ess.

### Stateroom Safe

Each stateroom is equipped with a secured storage safe. Instructions for use are located on the safe.

### To Change Dining Assignment

Requests for a different seating will be taken today:

- 1:00 pm - 3:30 pm; Book in Royal Palace
- 3:30 pm - 4:30 pm; Please call 7-1831, 7-1832, or 7-1833

### Remy & Palo Dining Reservations

Bookings will be taken on a first come basis today at:

- 1:00 pm - 3:30 pm, Palo; Book in Royal Palace
- 1:00 pm - 3:30 pm, Remy; Book in Royal Palace

Reservations required & cover charge applicable. Please dial 7-9734, or 7-9735 for more information. Openings still available for tonight!

### Dinner

Please check your dining tickets for details of your dining rotation, and bring them to your specific dining location. There is no need to wait in line prior to dinner. Dining Rooms open at designated seating times and your table is reserved each night of your cruise.

- 5:45 pm - First seating
- 8:15 pm - Second seating

## DINNER MENU

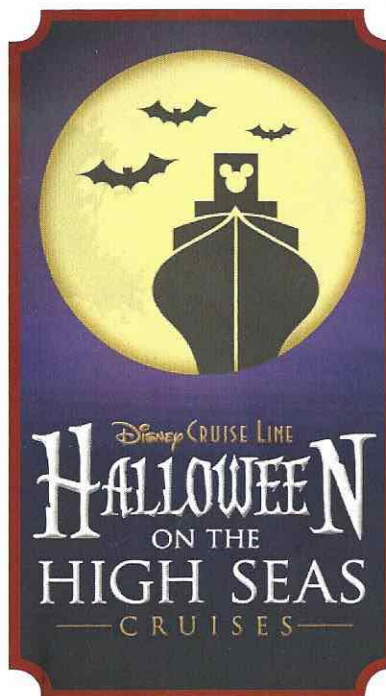
Animator's Palate: Pacific Rim Cuisine  
Enchanted Garden: Continental Market  
Royal Palace: French Dinner

## DRINK OF THE DAY

Bahama Mama (Alcoholic)  
Passion Cream Freeze  
(Non Alcoholic)

### IMPORTANT NUMBERS

Fire/Security: 7-3001  
Medical Emergency: 7-3000  
Health Center: 7-1923



## Don't Miss:

### Character Meet and Greet Ticket Distribution

Port Adventures Desk, Deck 5, Midship - 11:45 am - 2:30 pm

Pick up your tickets today to meet some of your favorite Disney friends.

- Princess Gathering
- Anna and Elsa

Tickets are required for each of these meet and greets. Space is limited.

### Walking Ship Tour

Preludes, Deck 3, Forward - 1:00 pm & 1:45 pm

(El tour del barco en Español sale a la 1:30 pm desde Preludes, Piso 3, Forward)

Enjoy the beauty of the Disney Dream with your Cruise Staff in this guided tour.

### The Pumpkin Tree

Lobby Atrium, Deck 3, Midship - 7:30 pm

Do you know why we celebrate Halloween? Or why we carve jack-o-lanterns? Then join the Caretaker at the Pumpkin Tree, and hear some fun stories and customs of Halloween. Also make sure to bring your pumpkin seed with you. There'll be some spooky surprises, and we promise a ghostly good time.

### WELCOME ABOARD RAFFLE!

View your Embarkation photos starting at 7:00 pm and enter the raffle for a chance to win a digital photo package of 15 images worth \$199.95! Visit Shutters for all your photographic needs, from digital cameras, batteries, binoculars and accessories. Terms and conditions apply. Visit Shutters on Deck 4, Midship.

*Shutters*



# ADULT ACTIVITY HIGHLIGHTS



## SENSES SPA FITNESS CLASSES & SEMINARS

*Acupuncture Demonstration* - Senses Spa & Salon - 2:00 pm  
*Spa Raffle* - Senses Fitness Center - 3:00 pm  
*Kids Me! Bath Pedit Party* (Nom. Fee) - Senses Spa & Salon - 4:30 pm  
*Complimentary Footprint Analysis* - Senses Spa & Salon - 4:30 pm  
*Introduction to Acupuncture* - Senses Spa & Salon - 5:30 pm

## BEVERAGE SEMINARS

Your Beverage team has a host of tastings and seminars to entertain and educate you. Stop by District Lounge, Deck 4 to pre-book these experiences (nominal fee applies). Tasting Seminars are only for Guests 21 and Older.

Whiskey Tasting - Stem to Stern Wine Tasting - Martini Tasting  
 Cognac Tasting - Tequila & Margarita Tasting - Mixology

Champagne Tasting (21+) - Pink: Wine and Champagne Bar - 9:30 pm  
 Whiskey Tasting (21+) - Meridian - 10:00 pm



1820 SOCIETY: STIR IT. BLEND IT. TASTE IT.  
*Cove Cafe, Deck 11, Forward - 10:00 pm*

Join us for a complimentary tasting event including coffee, chai latte and smoothies in Cove Café exclusively for our 18-20 year olds. You can learn how to create your own specialty coffees as well as plan the activities for the rest of your sailing.

# CRUISE HIGHLIGHTS

Friday

PORT CANAVERAL  
*Port Departure: 5:00 pm*  
*All Aboard: 3:45 pm*  
*Attire: Cruise Casual*

THE GOLDEN MICKEYS  
*Walt Disney Theatre*  
 6:15 pm & 8:30 pm

Saturday

NASSAU  
*All Ashore: 9:30 am*  
*All Aboard: 5:15 pm*  
*Attire: Halloween, Pirate or Cruise Casual*

VILLAINS TONIGHT!  
*Walt Disney Theatre*  
 6:15 pm & 8:30 pm

Sunday

DISNEY'S CASTAWAY CAY  
*All Ashore: 8:30 am*  
*All Aboard: 4:45 pm*  
*Attire: Optional Dress Up*

DISNEY'S BELIEVE  
*Walt Disney Theatre*  
 6:15 pm & 8:30 pm

Subject to change.



# FUN FOR ALL AGES HIGHLIGHTS



runDisney: CASTAWAY CAY 5K REGISTRATION (10+)  
 Sign up today for the runDisney: Castaway Cay 5K! Please visit the Port Adventures Desk or the Guest Services Desk to register at anytime prior to our arrival at Disney's Castaway Cay. Please note that runners must be 10 years of age or older to participate.

## WALKING SHIP TOUR

*Preludes, Deck 3, Forward - 1:00 pm & 1:45 pm*

(El tour del barco en Español sale a la 1:30 pm desde Preludes, Piso 3, Forward)

Enjoy the beauty of the Disney Dream with your Cruise Staff in this guided tour.



## DISNEY VACATION CLUB MEMBERS CELEBRATION

*D Lounge, Deck 4, Midship - 2:30 pm*

Members! Mix and mingle with other Members and learn how you can enhance your Membership! Please see a Disney Vacation Club representative on Deck 4, Midship, or call 7-2805 from your stateroom phone for more information.



## SAILING AWAY

*Deck 11 Stage, Deck 11, Midship - 4:30 pm*

It's time to go Sailing Away! Join Mickey and Minnie along with Tinker Bell and the rest of the gang as they welcome you to your Disney Cruise Vacation.



## \$3,000 MEGA JACKPOT BINGO

*Bingo Pre-Sales start at 7:00 pm*

*Evolution, Deck 4, Aft - 7:30 pm*

It's your chance to take home \$3,000 if you can cover your card in 46 numbers or less! Plus 4 cash prizes up for grabs and your chance to win a diamond pendant! Everyone attending will also receive a voucher to collect a free Diamonds International charm bracelet!



## THE PUMPKIN TREE

*Lobby Atrium, Deck 3, Midship - 7:30 pm*

Do you know why we celebrate Halloween? Or why we carve jack-o'-lanterns? Then join the Caretaker at the Pumpkin Tree and hear some fun stories and customs of Halloween. Also make sure to bring your pumpkin seed with you. There'll be some spooky surprises, and we promise a ghostly good time.



## MIRROR MIRROR

*D Lounge, Deck 4, Midship - 7:30 pm*

Head to D Lounge for the fairest game show of them all, Mirror Mirror. Featuring the Magic Mirror and everyone's favorite dwarf, Dopey.

## SO YOU THINK YOU KNOW YOUR FAMILY?

*D Lounge, Deck 4, Midship - 9:45 pm*

This fun-filled family game show is always full of surprises. Find out how well you know, or don't know your family!



## SALUDOS AMIGOS FIESTA

*D Lounge, Deck 4, Midship - 10:15 pm*

Come see what Donald and his friends are up to this time. Bring the family out to this interactive dance party featuring fun Latin music! Your family will learn to salsa, merengue and just have a Latin good time!



## THE NIGHTMARE BEFORE CHRISTMAS - (PG)

*Walt Disney Theatre, Deck 3 & 4, Forward - 10:45 pm*

Pumpkin King Jack Skellington longs to spread the joy of Christmas. But his merry mission puts Santa in jeopardy and creates a nightmare for good little boys and girls everywhere.



## FAMILY SUPERSTAR KARAOKE

*D Lounge, Deck 4, Midship - 10:45 pm*

Join your Cruise Staff in D Lounge tonight and sing along to your favorite song - fun for everyone.



# YOUTH ACTIVITIES HIGHLIGHTS



Deck 5, Midship (7-5864) 5:30 pm - 12:00 am

Infants and toddlers can enjoy toys and activities at it's a small world nursery. Reservations are first come, first served so please stop by!




Deck 5, Midship (7-1440)  
6:45 pm - 12:00 am





Deck 5, Midship (7-1445)  
5:30 pm - 12:00 am

## REGISTRATION FOR 3-12 YEAR OLDS

Meet the Youth Activities Team in Disney's Oceaneer Lab and Disney's Oceaneer Club. Complete your registration and learn all about the Themed Experiences this cruise!


 **CLUBHOUSE SERIES** - The Clubhouse Themed Experiences focus on movement and feature content which appeals to younger children. *Recommended for children seven years and younger.*

 **STORYBOOK SERIES** - The Storybook Series Themed Experiences are designed with a strong connection to the Disney classic stories. *Recommended for children seven years and younger.*

 **JUMP UP! SERIES** - The Jump Up! Themed Experiences will include large group games & movement-oriented activities.

 **CREATE & INVENT SERIES** - The Create & Invent Themed Experiences will have a tactile focus allowing children to create and admire their work.

 **IN THE SPOTLIGHT SERIES** - The In The Spotlight Themed Experiences focus on children's stage presence with lots of activities and enthusiasm. *Recommended for children seven years and older.*

 **SOLVE IT! SERIES** - The Solve It! Themed Experiences are less active, but will challenge children with problem/solutions-based activities. *Recommended for children seven years and older.*

 **YOUTH ACTIVITIES OPEN HOUSE** - Activities for families, adults and children of all ages to enjoy together.

## Dine & Play

A convenience for families dining at 8:15 pm, our Youth Activities counselors will be available at 9:15 pm at the entrance of Royal Palace, Enchanted Garden and Animator's Palate dining rooms to bring registered children to join the fun in the Youth Activities areas.



Deck 13, Midship (7-9743) 6:00 pm - 1:00 am  
(11-14 YEAR OLDS)

## TAKING IT TO THE EDGE

10:00 pm

Come to Edge and get all the info you need to squeeze every bit of fun out of your stay onboard.



Entrance on Deck 4, Forward (7-9417)  
6:00 pm - 1:00 am

(14-17 YEAR OLDS)

## THE DOWNLOAD

10:30 pm

Come up to Vibe and help plan all the fun activities you will be doing this cruise with your new friends!

# BUENA VISTA THEATRE

Deck 4 & 5, Midship

## Feature Movies this Voyage

### FRIDAY - PORT CANAVERAL

5:00 pm PG Tomorrowland  
8:00 pm PG Tomorrowland  
10:45 pm PG-13 Ant-Man



### SATURDAY - NASSAU

11:00 am PG-13 Ant-Man  
2:00 pm PG Tomorrowland  
5:30 pm PG Inside Out  
8:15 pm PG Inside Out  
11:00 pm PG Inside Out



### SUNDAY - DISNEY'S CASTAWAY CAY

8:30 am PG Inside Out  
11:00 am PG Tomorrowland  
2:30 pm PG Inside Out  
5:15 pm PG-13 Ant-Man  
8:15 pm PG-13 Ant-Man  
10:45 pm PG-13 Ant-Man





Subject to change.



## ADULT GAME SHOW

It's time to play everyone's favorite couple's game show, Match your Mate!



Evolution (18+),  
Deck 4, Aft,  
10:30 pm



THE NIGHTMARE BEFORE CHRISTMAS

SING AND SCREAM

## HALLOWEEN MOVIE SPECIAL

You're invited to a special presentation of Tim Burton's popular classic, presented in 3-D. Featuring state-of-the-art projection, sound and in-theatre effects, you become part of the experience.

You never know who may show up.

Walt Disney Theatre,  
Deck 3 & 4, Midship,  
10:45 pm

## YOUTH ACTIVITIES OPEN HOUSE

Open House is an opportunity for all to come and participate in a variety of exciting activities and free time in it's a small world nursery, the Oceaneer Club, Oceaneer Lab, Edge and Vibe throughout the cruise. During these times secured programming will still be offered in the other venues for those looking to check their children into care.



# MORE TO ENJOY WHILE ONBOARD

## THE BRITISH ISLES & EUROPEAN VARIETY

Disney Cruise Line is now visiting more than 15 European Countries in Summer 2016! For the first time, Disney Magic will be sailing to the British Isles, including visits to Scotland, England, Ireland and France, as well as returning with select sailings to Norway, Iceland and the Mediterranean and the Greek Isles! Visit the Onboard Sales Desk for more information.

## DISNEY VACATION CLUB® MEMBERS CELEBRATION

Members! Mix and mingle with other Members and learn how you can enhance your Membership! Please see a Disney Vacation Club representative on Deck 4, Midship, or call 7-2805 from your stateroom phone for more information.

## PORT & SHOPPING INFORMATION

Join your Shopping Guide Maureen today at 2:45 p.m. in the Buena Vista Theatre to learn about the incredible shopping ashore in Nassau! Over \$1,000 in give-a-ways and prizes! Arrive early for free gifts and more!

## RELIGIOUS SERVICES

Groups who need a location to practice their faith may contact Guest Services for availability information.

## Connect @ Sea

Sign up for a free 50 MB Internet package today and enjoy it throughout the cruise! This offer is only available from noon to midnight on the day your cruise begins. On your wireless device, find the "DCL-Guest" Wi-Fi Network, go to [www.dclguest.com](http://www.dclguest.com) to create an account, and get your free 50 MB of data to start sharing your memories even before you leave port! No purchase necessary. The free 50 MB package can only be used for the duration of the cruise. Only one free package per stateroom, but everyone can share it. Unused data from a package will not be reimbursed and it is non-transferable between voyages or ships.

## Disney Cruise Line. PORT ADVENTURES

From a visit to the world-renowned Atlantis Resort in Nassau to Parasailing high above the turquoise waters around Castaway Cay, there is an adventure for everyone on your Disney Dream cruise. Visit the friendly team at the Port Adventures Desk, Deck 5, Midship, to learn more about these, and many more Port Adventures.

*Port Adventures Desk, Deck 5, Midship*

## SHOPPING

### TAG HEUER TIMEPIECES

Over 150 years of excellence in keeping time, proudly worn all over the world, and available here on the Disney Dream. White Caps, Deck 3 Forward.

### HALLOWEEN ON THE HIGH SEAS

Celebrate Halloween on the High Seas with a spooky Halloween shirt and pin designed especially for Disney Cruise Line, available in Mickey's Mainsail. Here you can also find various Halloween souvenirs plus everything young aspiring pirates and princesses need for their Halloween transformation. Deck 3, Forward.

### INTRODUCING DISNEY INSPIRED JEWELRY BY SOPHIA FIORI

Sophia Fiori, one of the world's leading designers of diamond jewelry, is introducing their new Disney inspired diamond jewelry collection. Available now onboard for a limited time, stop by White Caps to view how Sophia Fiori makes some of your favorite Disney icons shine. White Caps, Deck 3, Forward.

### STYLISH WATCHES ONBOARD

Whether you need a tool for strict timekeeping or a fun fashion accessory, visit White Caps and browse the wide selection of stylish watches available including popular brands such as Skagen, Tissot, and Shinola. Deck 3, Forward.

### GEAR UP WITH "STAR WARS: EPISODE VII – THE FORCE AWAKENS" MERCHANDISE

The Force has awoken onboard the Disney Dream Cruise Ship! Head to Mickey's Mainsail on Deck 3, Forward, for the new "Star Wars: Episode VII – The Force Awakens" merchandise that the whole family will love. Where will your alliance fall?

### MAGICAL MAKEOVERS WITH GLITTER & GO

Fairy Godmothers-in-Training have boarded the Disney Dream Cruise Ship and are anxiously awaiting to give you a sparkly transformation with the Glitter & Go makeover experience. Guests ages 3-12 will have the opportunity to allow their inner Princess to shine through in time for dinner or for meeting the lovely Disney Princesses themselves! For more information, please see a Merchandise Host/Hostess at Mickey's Mainsail, Deck 3, Midship.

Due to port regulations, when the ship is docked, the stores will remain closed.



## RAINFOREST DELUXE CRUISE PASS

Enjoy our scented showers, aroma steam, sauna rooms and private jacuzzi overlooking the ocean. Also, read a nice book on the warm loungers! Unlimited entry when you purchase your cruise pass today!

Couples \$102.00 and Singles \$69.00  
Limited number of passes on sale!

*Senses Spa & Salon, Deck 11, Forward  
Ext. 7-1465*



Celebrate Halloween on the High Seas with a spooky Halloween shirt and pin designed especially for Disney Cruise Line.

**MICKEY'S MAINSAIL  
DECK 3, FORWARD**

## Shutters GET THE PICTURE

*Order a Get the Picture! photo disc and share your vacation memories digitally! No need to decide which photos to take home now, select your photos from the comfort of your home. Print, send and share your photos easily! Hurry, as supplies are limited.*

\*Terms and conditions apply. Photos captured on your vacation are only available for purchase during this cruise.

## IMPORTANT INFORMATION

### Security Notice

All Guests (including children) who wish to disembark the ship are required to present their Key to the World card at the gangway. A photo ID is also required for those Guests who are 18 years of age or older. Guests under the age of 18 are required to have a parent, guardian or other responsible adult sign an authorization form at the Guest Service Desk if they wish to go ashore unaccompanied or with any adult from another stateroom.

### Inclement Weather

For the safety of all Guests, outdoor events may be changed due to unforeseen weather conditions.

### Cold and Flu Reminder

Please wash hands frequently and thoroughly, particularly before meals. Contact the Health Center by dialing 7-1923, should anyone in your party become ill.

### Corridor Quiet Hours

As a courtesy to all our Guests, please recognize quiet hallway hours from 10:00 pm - 8:00 am.

### Sunscreen/Insect Repellent Advisory

Use sunscreen first and protect against mosquito bites and related illnesses by applying insect repellent on top of sunscreen when going ashore. Insect repellent is available for purchase in White Caps.

### Environmental Message

With Disney's commitment to the environment, please refrain from throwing anything over the ship's side. Thank you!

### No Reserved Seats Policy

As a courtesy to all our Guests, we kindly advise that the saving of seats is not permitted in the Walt Disney Theatre, and the saving of the sun loungers is not permitted on Deck 11, 12 and 13. Items left unattended will be returned to lost and found at Guest Services, Deck 3, Midship.

### Smoking

For the comfort of our guests the following areas are designated as Smoking areas:

- Deck 13, Forward, port side, by "Currents"
- Deck 12, Aft, port side outdoor area that is accessible through the Meridian Lounge
- Deck 4, Aft, port side, the outside Promenade Deck from 6:00 pm to 6:00 am only (all of Deck 4 is no smoking from 6:00 am to 6:00 pm).
- Smoking is prohibited inside all Guest staterooms and on stateroom verandahs. Guests found smoking in their staterooms or on their verandahs will be charged a \$250 stateroom recovery fee. Electronic cigarettes may only be used in designated smoking areas.

### Walt Disney Theatre

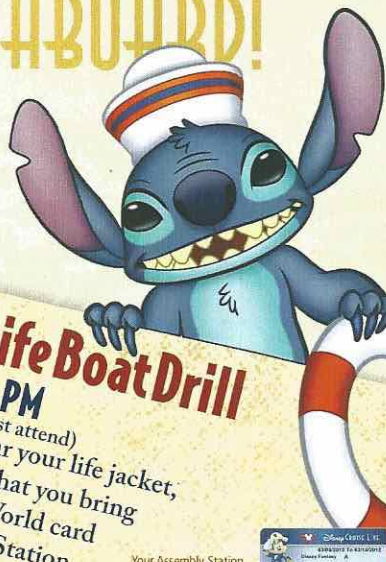
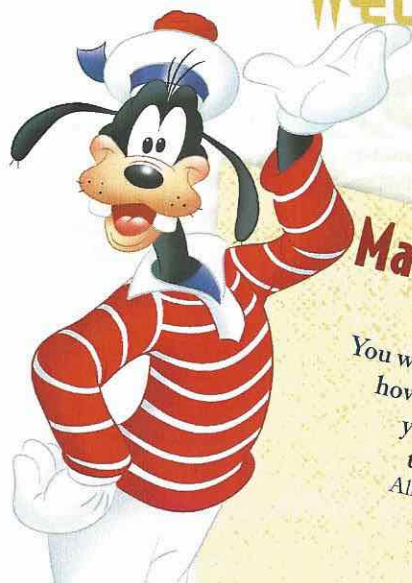
Theatrical performances may use artificial fog, strobe lights, pyrotechnics and other special effects. For the safety of our performers and the comfort of those around you, the use of any photography, video recording devices or any electronic equipment is prohibited.

### Verandah Safety

Please do not leave any combustible materials on your balcony when not present in your stateroom for safety reasons.



# WELCOME ABOARD!



## Mandatory Life Boat Drill

4:00 PM

(All Guests must attend)  
You will not need to wear your life jacket,  
however it is critical that you bring  
your Key To The World card  
to your Assembly Station.  
All ship services will be suspended  
between 3:45 and 4:30 pm.

Your Assembly Station  
is indicated on your  
Key To The World card.



### SAILING AWAY

It's time to go Sailing Away!  
Join Mickey and Minnie along  
with Tinker Bell and the rest of  
the gang as they welcome you  
aboard the Disney Dream.

**4:30 pm**  
**Deck Stage**  
**Deck 11, Midship**

Symbol for activities that will  
be repeated during the cruise

FOLD

Fold along the dotted lines and take me with you  
so you don't miss any of the fun!

FOLD

Afternoon	1:45	2:00	2:15	2:30	2:45	3:00	3:15	3:30	3:45	4:00	4:15	4:30	4:45	5:00	5:15	5:30	5:45	6:00	6:15	6:30	6:45
FUNNEL VISION	Frozen (PG) Funnel Vision	< Starts at 1:30 pm										Sailing Away Funnel Vision						Toy Story (G) Funnel Vision			
BUENA VISTA THEATRE					Port & Shopping Talk									Tomorrowland (PG) Duration: 2 Hours 10 Minutes							
CHARACTERS																					
FUN FOR ALL AGES	Walking Ship Tour Preludes (Earlier Tour at 1:00 pm)																				
ADULTS																					
VIBE 14-17 YEARS OLD	Youth Activities Open House																				
EDGE 11-14 YEARS OLD	Youth Activities Open House																				
OCEANEER LAB 3-12 YEARS OLD	Youth Activities Open House & Registration																				
OCEANEER CLUB 3-12 YEARS OLD	Youth Activities Open House & Registration																				

All ship services will  
be suspended during  
this time for the  
mandatory  
Boat Drill scheduled  
for 4:00 pm.

Please refer to the posted  
drill instructions prior  
to heading to your  
Assembly Station.

Deck Stage

Goofy  
Deck 4, Balcony

Live Music with Midtown  
Lobby Atrium

Live Music with Next of Kin  
District Lounge

Red Carpet Arrivals

**THE GOLDEN MICKKEYS**  
A Timeless Tribute  
Walt Disney Theatre

Kids MelBath Padi Party  
Senses Spa & Salon

Jewish Sabbath  
Outlook

Footprint Analysis  
Senses Fitness Center

Introduction to Acupuncture  
Senses Spa Salon

Youth Activities Open House

Open for Teens

Youth Activities Open House

Open for Tweens

Youth Activities Open House & Registration

Meet Your Counselors

Open House & Registration

Choose Your Cruise

Youth Activities Open House & Registration

Human Bingo



Evening	7:00	7:15	7:30	7:45	8:00	8:15	8:30	8:45	9:00	9:15	9:30	9:45	10:00	10:15	10:30	10:45	11:00	11:15	11:30	11:45	12:00
FUNNEL VISION					Up (PG) Funnel Vision								Race to Witch Mountain (PG) Funnel Vision								
BUENA VISTA THEATRE					Tomorrowland (PG) Duration: 2 Hours 10 Minutes												Ant-Man (PG-13) <b>DOLBY 3D</b> Duration: 1 Hour 57 Minutes				
CHARACTERS		Mickey Mouse Deck 4, Balcony										Cinderella Lobby Atrium (V)									
		Minnie Lobby Atrium (H)	Rapunzel Lobby Atrium (V)									Minnie Mouse Lobby Atrium (H)									
FUN FOR ALL AGES	Bingo Pre-Sales Evolution	\$3,000 Mega Jackpot Bingo Evolution											So You Think You Know Your Family? D Lounge				Family Superstar Karaoke D Lounge				
		Midtown LIVE Lobby Atrium	The Pumpkin Tree Lobby Atrium										Live Music with Midtown Lobby Atrium								
ADULTS																					
VIBE 14-17 YEARS OLD	Open for Teens	Meet Your Counselors																			
EDGE 11-14 YEARS OLD	Open for Tweens	Game Challenge																			
OCEANEER LAB 3-12 YEARS OLD	Ice Breakers	Choose Your Cruise	Magic PlayFloor																		
OCEANEER CLUB 3-12 YEARS OLD	Human Bingo	Toy Story Boot Camp	Picture This	Memory Wall																	

IN THE SPOTLIGHT SERIES

ADULTS IT SERIES

UP UP SERIES

CREAT & INVENT SERIES

CLUBHOUSE SERIES

3-DAYBOOK SERIES

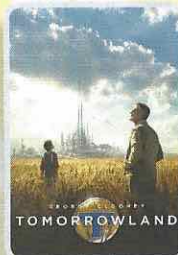


FRIDAY, SEPTEMBER 11, 2015 - PORT CANAVERAL, FLORIDA

# BUENA VISTA THEATRE

Deck 4 & 5, Midship

DOLBY 3D



5:00 pm & 8:00 pm  
Duration: 2 hrs 10 mins  
Rating: PG



10:45 pm  
Duration: 1 hr 57 mins  
Rating: PG-13

## Character Meet and Greet Ticket Distribution

Port Adventures Desk, Deck 5, Midship - 11:45 am - 2:30 pm

Pick up your tickets today to meet some of your favorite Disney friends.

- Princess Gathering
- Anna and Elsa

Tickets are required for each of these meet and greets.  
Space is limited.

## Character Appearances

### SAILING AWAY

Deck 11 Stage  
4:30 pm

### GOOFY

Deck 4, Balcony  
5:30 pm

### MICKEY MOUSE

Deck 4, Balcony  
7:15 pm & 9:30 pm

### MINNIE MOUSE

Lobby Atrium (H)  
7:15 pm & 9:30 pm

### RAPUNZEL

Lobby Atrium (V)  
7:30 pm

### CINDERELLA

Lobby Atrium (V)  
9:30 pm



(H) Hallway - (S) Starboard Side - (P) Port Side - (V) Vestibule

For details of daily Disney character appearances, refer to the character line on your Navigator Grid, or the digital character board in the Lobby Atrium.

## YOUTH ACTIVITIES THEMED EXPERIENCES

**CLUBHOUSE SERIES**  
focuses on movement and features content which appeals to younger children.

**STORYBOOK SERIES**  
is designed with a strong connection to the Disney classic stories.

**JUMP UP! SERIES**  
includes large group games & movement-oriented activities.

**CREATE & INVENT SERIES**  
will have a tactile focus allowing children to create and admire their work.

**OPEN HOUSE**

are activities for families, adults and children of all ages to enjoy together.

**IN THE SPOTLIGHT SERIES**  
focuses on children's stage presence with lots of activities and enthusiasm.

**SOLVE IT! SERIES**  
are less active, but will challenge children with problem/solutions-based activities.

## SHIP DIRECTORY

### YOUTH ACTIVITIES

DISNEY'S OCEANEER CLUB	DECK 5, MID	6:45 PM - 12:00 AM
DISNEY'S OCEANEER LAB	DECK 5, MID	5:30 PM - 12:00 AM
EDGE	DECK 13, MID	6:00 PM - 1:00 AM
VIBE	DECK 4, FWD	6:00 PM - 1:00 AM
IT'S A SMALL WORLD NURSERY	DECK 5, MID	5:30 PM - 12:00 AM

### POOLS & MORE

\* Children under 12 must have adult supervision in pool areas.

AQUADUCK	DECK 12, AFT	11:45 AM - 3:00 PM
		4:30 PM - 10:00 PM
DONALD'S POOL	DECK 11, MID	12:00 PM - 3:15 PM
		8:00 PM - 10:00 PM
MICKEY'S POOL	DECK 11, MID	12:00 PM - 3:15 PM
		4:30 PM - 10:30 PM
MICKEY'S SLIDE	DECK 11, MID	12:00 PM - 3:15 PM
		4:30 PM - 6:00 PM
NEMO'S REEF	DECK 11, MID	12:00 PM - 3:15 PM
		4:30 PM - 6:00 PM
QUIET COVE POOL (18+)	DECK 11, FWD	12:00 PM - 10:00 PM

Complimentary pool vests are available for children to use in the pools onboard.  
Located on the pool deck.

### RECREATION

GOLF/SPORTS SIMULATOR	DECK 13, AFT	4:30 PM - 6:00 PM
GOOFY GOLF	DECK 13, AFT	5:30 PM - 10:00 PM
GOOFY'S SPORTS DECK	DECK 13, AFT	12:00 PM - 6:00 PM
MIDSHIP DETECTIVE AGENCY	DECK 5, MID	12:00 PM - 11:00 PM
PORT ADVENTURES DESK	DECK 5, MID	12:00 PM - 3:30 PM
		4:30 PM - 6:00 PM
		7:00 PM - 10:00 PM
SENSES FITNESS CENTER (18+)	DECK 11, FWD	12:00 PM - 10:00 PM

### GENERAL INFORMATION

ARR-CADE	DECK 11, AFT	24 HOURS
BUENA VISTA THEATRE	DECK 4 & 5, MID	SHOWTIMES
DISNEY VACATION CLUB	DECK 4, MID	5:00 PM - 10:00 PM
GUEST SERVICES	DECK 3, MID	24 HOURS
HAIRBRAIDING	DECK 11, MID	4:30 PM - 10:00 PM
MEDICAL HEALTH CENTER	DECK 1, FWD	4:30 PM - 7:00 PM
ONBOARD SALES DESK	DECK 4, MID	7:00 PM - 8:30 PM
PORT & SHOPPING DESK	DECK 4, MID	6:00 PM - 8:00 PM
PRELUDES	DECK 3, FWD	5:45 PM - 8:00 PM
		8:00 PM - 8:45 PM
SENSES SPA AND SALON	DECK 11, FWD	12:00 PM - 10:00 PM
SHUTTERS PHOTO GALLERY	DECK 4, MID	7:00 PM - 10:30 PM
WALT DISNEY THEATRE	DECK 3 & 4, FWD	SHOWTIMES

### SHOPPING

MICKEY'S MAINSAIL	DECK 3, FWD	5:45 PM - 11:00 PM
SEA TREASURES	DECK 3, FWD	5:45 PM - 11:00 PM
QUACKS	DECK 11, MID	
VISTA GALLERY	DECK 4, MID	6:00 PM - 11:00 PM
WHITE CAPS	DECK 3, FWD	5:45 PM - 11:00 PM
WHOZITS & WHATZITS	DECK 11, MID	12:00 PM - 10:00 PM

DUE TO PORT REGULATIONS, WHEN THE SHIP IS DOCKED,  
THE STORES MUST REMAIN CLOSED.

## DINNER MENU

Animator's Palate: Pacific Rim Cuisine  
Enchanted Garden: Continental Market  
Royal Palace: French Dinner  
Dining Times: 5:45 pm & 8:15 pm

## DRINK OF THE DAY

Bahama Mama (Alcoholic)  
Passion Cream Freeze (Non Alcoholic)

## WEATHER FORECAST

Today: Cloudy  
High: 84°F/29°C  
Tomorrow: Partly Sunny  
High: 86°F/30°C

Evening Attire: Cruise Casual

## DINING & LOUNGES

### LUNCH

CABANAS	DECK 11, AFT	11:45 AM - 3:00 PM
ENCHANTED GARDEN	DECK 2, MID	12:00 PM - 2:00 PM
FILLMORE'S FAVORITES	DECK 11, MID	12:00 PM - 3:15 PM
		4:30 PM - 6:00 PM
LUIGI'S PIZZA	DECK 11, MID	12:00 PM - 3:15 PM
		4:30 PM - 6:00 PM
TOW MATER'S GRILL	DECK 11, MID	12:00 PM - 3:15 PM
		4:30 PM - 6:00 PM

### DINNER

ANIMATOR'S PALATE	DECK 3, AFT	5:45 PM & 8:15 PM
ENCHANTED GARDEN	DECK 2, MID	5:45 PM & 8:15 PM
PALO (18+) (RESERVATIONS REQ. & NOM. FEE APPLIES)	DECK 12, AFT	6:00 PM - 8:30 PM
REMY (18+) (RESERVATIONS REQ. & NOM. FEE APPLIES)	DECK 12, AFT	6:00 PM - 8:30 PM
ROYAL PALACE	DECK 3, MID	5:45 PM & 8:15 PM
TOW MATER'S GRILL	DECK 11, MID	6:00 PM - 11:00 PM

### LATE NIGHT SNACKS

LUIGI'S PIZZA	DECK 11, MID	9:30 PM - 12:00 AM
THE DISTRICT	DECK 4, AFT	10:45 PM - 11:45 PM

### ADDED FEATURES

BEVERAGE STATION	DECK 11, MID	24 HOURS
EYE SCREAM	DECK 11, MID	12:00 PM - 12:00 AM
ROOM SERVICE	DIAL 0	24 HOURS

### ENTERTAINMENT - LOUNGES - BARS

Adults must be 21 and older to consume alcoholic beverages.

BON VOYAGE	DECK 3, MID	11:30 AM - 11:00 PM
COVE BAR (18+)	DECK 11, FWD	11:30 AM - 11:00 PM
COVE CAFE (18+)	DECK 11, FWD	11:30 AM - 12:00 AM
CURRENTS (18+)	DECK 13, FWD	11:30 AM - 11:00 PM
D LOUNGE	DECK 4, MID	SHOWTIMES
DISTRICT LOUNGE (18+ AFTER 9:00 PM)	DECK 4, AFT	11:30 AM - 2:00 AM
EVOLUTION (18+)	DECK 4, AFT	9:30 PM - 12:00 AM
FROZONE TREATS	DECK 11, MID	11:30 AM - 10:00 PM
MERIDIAN (18+)	DECK 12, AFT	5:00 PM - 12:00 AM
OUTLOOK (18+)	DECK 14, MID	
PINK: WINE AND CHAMPAGNE BAR (18+)	DECK 4, AFT	5:00 PM - 12:00 AM
PUB 687 (18+ AFTER 9:00 PM)	DECK 4, AFT	11:30 AM - 12:00 AM
SKYLINE (18+)	DECK 4, AFT	5:00 PM - 12:00 AM
VISTA CAFE	DECK 4, MID	11:30 AM - 11:00 PM
WAVES	DECK 12, AFT	11:30 AM - 6:30 PM

Public Health Advisory: Consuming raw or under-cooked meats, poultry, seafood, shellfish, or eggs may increase your risk for food borne illness, especially if you have certain medical condition.



### MIDSHIP DETECTIVE AGENCY

Use your detective know-how and our special detective "badge" to search the ship and catch your criminal! Deck 5, Midship Kiosks.

Disney Cruise Line  
PORT ADVENTURES

Visit the Port Adventures Desk,  
Deck 5, Midship, for bookings & questions.

### IMPORTANT NUMBERS

Fire/Security: 7-3001  
Medical Emergency: 7-3000  
Health Center: 7-1923