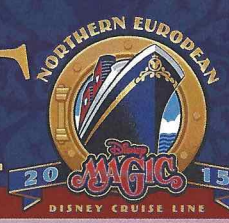


# PERSONAL NAVIGATOR



Sunrise: 4:23 am Sunset: 8:39 pm  
Evening Attire: Cruise Casual

Today: Overcast High: 68°F/20°C  
Tomorrow: Sunny High: 66°F/19°C

SUNDAY, AUGUST 2, 2015

DAY AT SEA

## Disney DREAMS

AN ENCHANTED CLASSIC

*In this spectacular fantasy, a little girl discovers the power of her dreams. Fly through the air with Peter Pan, your imagination, and many of your favorite Disney stories – including Disney's newest classic, Frozen! With a little Faith, Trust and Pixie Dust, you'll see that dreams really can come true!*

### WALT DISNEY THEATRE

Deck 4, Forward

6:30 pm & 8:45 pm

As a courtesy to all Guests, we kindly advise that the saving of seats is **not** permitted in the Walt Disney Theatre.

As a courtesy to all Guests, we kindly advise that the saving of seats is **not** permitted in the Walt Disney Theatre.



Assistance available at the entrance to the Walt Disney Theatre 30 minutes prior to show time.

## Disney MAGIC Fun Facts

### Walt Disney Theatre - Technical:

**Q:** How many mirrors and sequins are there on the Cinderella Carriage in Twice Charmed?  
**A:** 1012.

**Q:** How heavy are the Hades steps in Villains Tonight?  
**A:** 800lbs.

**Q:** How many audio speakers are in the Walt Disney Theatre  
**A:** 56.

**Q:** How many loads of laundry are washed in the Walt Disney Theatre per week?  
**A:** Just under 50 loads.

**Q:** How many technicians are needed to run a Disney production show in the Walt Disney Theatre?  
**A:** 11 technicians.

**Q:** How many lights are in the Walt Disney Theatre?  
**A:** Approximately 70 intelligent lights and 200 generic lights.



### FAMILY VARIETY ACT

Featuring the Comedy and Magic of Danny Buckler, in this fun for all the family variety style show.

Walt Disney Theatre,  
Deck 4, Forward  
2:45 pm  
(Doors open at 2:30 pm)

### Don't Miss:

**Anyone Can Cook - Battle of the Chefs (18+)**  
*D Lounge, Deck 4, Midship - 10:15 am*  
LIVE - Battle of the chefs! Who will dominate to win the ultimate cooking battle?

**Jack-Jack's Incredible Diaper Dash**  
*Lobby Atrium, Deck 3, Midship - 11:30 am*  
Calling all baby cruisers! It's time to take to the mat to see who's the fastest crawler of the seven seas! Register your baby 15 minutes prior to the big race.

**Q&A with Jennifer Shrader Williams**  
*Fathoms, Deck 3, Forward - 12:15 pm*  
You've seen her perform, now is your chance to ask your questions and get an autograph from a Broadway star!

**Family Talent Show**  
*D Lounge, Deck 4, Midship - 7:45 pm*  
Your fellow Guests have rehearsed and are ready to show off their talents.

**Cruise Staff Farewell (18+)**  
*Fathoms, Deck 3, Forward - 10:45 pm*  
Join your Club Host and the Cruise Staff team and see our version of the funniest skit on the high seas, "If I Were Not Upon The Sea."

### Debark Talk Broadcast

Important information regarding disembarkation procedures for your journey home will be covered in this debarkation briefing. The broadcast will be shown continuously on channel 24-2 of your stateroom television for your convenience.

Thank you in advance for completing your comment card.

## DINNER MENU

Animator's Palate : 'Til We Meet Again  
Carioca's : 'Til We Meet Again  
Lumiere's : 'Til We Meet Again

## DRINK OF THE DAY

Lynchberg Lemonade (Alcoholic)  
Cookies and Cream (Non-Alcoholic)

### IMPORTANT NUMBERS

Fire/Security: 7-3001  
Medical Emergency: 7-3000  
Health Center: 7-1923



# ADULT ACTIVITY HIGHLIGHTS

## SENSES SPA FITNESS CLASSES & SEMINARS

*Sunrise Stretch* - Senses Spa Fitness Center - 7:00 am  
*Fab Abs* - Senses Spa Fitness Center - 7:30 am  
*Body Sculpt Boot Camp* (Nom. Fee) - Senses Spa Fitness Center - 8:00 am  
*Eat More to Weigh Less* - Senses Spa & Salon - 10:00 am  
*Complimentary Footprint Analysis* - Senses Spa Fitness Center - 2:00 pm

## TASTING CLASSES

*Chocolate & Liquor Tasting* (18+) - Keys - 12:00 pm  
*Mixology* (18+) - Keys - 2:00 pm  
 Please make reservations for tastings at Guest Services for a nominal fee. Guests 18 to 20, whose parent or guardian has completed a beverage consent form, may attend with their parent or guardian.

### CLUB 18\*21: ICE CREAM SOCIAL

*Eye Scream, Deck 9, Aft - 11:45 am*  
 Keep calm and ice cream on. Enjoy a frozen treat with your shipmates.

### CLUB 18\*21: 2000'S MUSIC CHALLENGE

*O'Gills Pub, Deck 3, Forward - 5:15 pm*  
 Join your Cruise Staff as we navigate our way through the music of the 2000's.

### CLUB 18\*21: FAREWELL

*Fathoms, Deck 3, Forward - 10:30 pm*  
 Join your Cruise Staff and your new friends in this last gathering for some fun.

## ART OF THE THEME SHOW TOUR

*Palo, Deck 10, Aft - 9:00 am & 2:30 pm*  
 Join us for a guided tour highlighting the design, Imagineering and artistry of the Disney Magic. This tour is reserved for Guests 18 and over.

## BRITISH MUSIC TRIVIA

*O'Gills Pub, Deck 3, Forward - 11:30 am*  
 Join your Cruise Staff and test your knowledge of popular British music.

## BRAINTEASERS TRIVIA

*O'Gills Pub, Deck 3, Forward - 7:45 pm*  
 Put your brain to the test as your Club Host, pushes the limits of your knowledge with some classic Brainteasers. Can you figure them out?

# FUN FOR ALL AGES HIGHLIGHTS

## INTERDENOMINATIONAL SERVICE

*Keys, Deck 3, Forward - 8:30 am*  
 A quiet space is reserved for those Guests wishing to conduct their own service.



## COULD GO BINGO

*Bingo Pre-Sales start at 10:30 am*  
*Fathoms, Deck 3, Forward - 10:45 am*  
 Four CASH prizes to be won! The snowball jackpot continues to grow and could go at this morning's session. Pre-Sales start 15 minutes prior to game.



## PLAYMATION

*Promenade Lounge, Deck 3, Aft - 10:45 am*  
 The Avengers Need You: The battle begins October 4, but recruits can reserve their gear onboard today!

## DISNEY VACATION CLUB GROUP PREVIEW

*D Lounge, Deck 4, Midship - 11:45 am*  
 Want to learn more about taking magical vacations year after year? Please see a Disney Vacation Club representative on Deck 4, Midship, or call 7-2805 from your stateroom phone for more information about our interactive group presentation.



## THE ULTIMATE QUEST

*Promenade Lounge, Deck 3, Aft - 1:00 pm*  
 Join us for this fast-paced scavenger hunt throughout the ship. Don't forget to bring your wave phones!

## JUNNK WORKSHOP

*Fathoms, Deck 3, Forward - 1:45 pm*  
 JunNk teaches you the basics of rhythm and percussion in this fun family event.

## TOWEL FOLDING

*D Lounge, Deck 4, Midship - 2:00 pm*  
 Learn to create those amazing towel creatures you've seen in your stateroom all cruise long.

## DANCE CLASS: SALSA

*Fathoms, Deck 3, Forward - 2:45 pm*  
 Join our professional dance instructors as they teach you how to Salsa.

## FINAL JACKPOT BINGO

*Bingo Pre-Sales start at 4:00 pm*  
*Fathoms, Deck 3, Forward - 4:15 pm*  
 The snowball jackpot MUST BE WON at this final session! Beat the line and get your cards early. Who will be the lucky winner? It could be you! Pre-Sales start 15 minutes prior to game.



## TALENT SHOW REHEARSALS

*D Lounge, Deck 4, Midship - 5:00 pm*  
 A rehearsal time for those registered for our show.

## FAMILY TALENT SHOW

*D Lounge, Deck 4, Midship - 7:45 pm*  
 Your fellow Guests have rehearsed and are ready to show off their talents.



## FAMILY SUPERSTAR KARAOKE

*D Lounge, Deck 4, Midship - 10:45 pm*  
 Join your Cruise Staff in D Lounge tonight and sing along to your favorite song - fun for everyone.





# YOUTH ACTIVITIES HIGHLIGHTS

## DINE & PLAY

As a convenience for families dining at 8:30 p.m., our Youth Activities Counselors will be available at 9:30 p.m. at the entrance of Lumiere's, Carioca's and Animator's Palate to bring registered children to join the fun in Disney's Oceaneer Club and Disney's Oceaneer Lab.



Deck 5, Aft (7-5864)

9:00 am - 11:00 pm

Infants and Toddlers can enjoy toys and activities at It's a small world nursery. Reservations are first come, first served so please stop by!



Deck 5, Midship (7-1439)  
(3-12 years old)

9:00 am - 12:00 am

### BECOME IRON MAN!

11:45 am

Do you want to be Iron Man? Marvel's Avengers Academy invites you to virtually suit up in Iron Man's armor for an exciting interactive training gauntlet.

### STORY TIME WITH BELLE

2:30 pm

Come to the Oceaneer Club and listen to one of your favorite Disney stories: Beauty & the Beast!



Deck 5, Midship (7-1445)  
(3-12 years old)

9:00 am - 12:00 am

### LIGHTS, CAMERA, IMPROV!

9:15 am

Perform an improv skit as you discover the wonders of drama and music on stage in front of a live audience.

### FRIENDSHIP ROCKS

5:00 pm

Come and celebrate with all the children from the Oceaneer Club and Lab in the jammin' performance of Friendship Rocks! You won't want to miss any of the fun.



Deck 2, Midship (7-5816)  
(11-14 years old)

10:00 am - 12:00 am

### ANIMATION ANTICS

11:00 am

Learn simple animation techniques and then put your new skills to use by drawing some of your favorite Disney Characters.

### HOW WELL DO YOU KNOW YOUR COUNSELOR?

10:00 pm

Do you think you know all there is to know about your counselors? Come test out your knowledge with all of your friends!



Deck 10, Midship (7-18517)  
(14-17 years old)

10:30 am - 1:00 am

### GOTCHA

12:00 pm

You will try to eliminate your victim by various methods collecting points throughout the day, last person standing with the most points wins.

### ZOMBIFIED PREMIERE

10:15 pm

It's premiere night for the latest zombie movie starring YOU!

# BUENA VISTA THEATRE

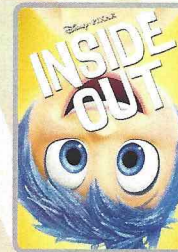
Deck 5, Aft  
Today's Movies

Open Captioning

DOLBY 3D



8:30 am  
Duration:  
1 hr 21 mins  
Rating: PG

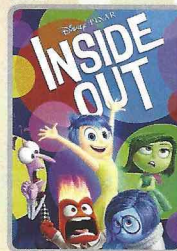


10:15 am  
Duration:  
1 hr 42 mins  
Rating: PG

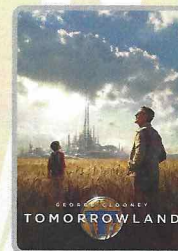


12:30 pm  
Duration:  
1 hr 57 mins  
Rating: PG-13

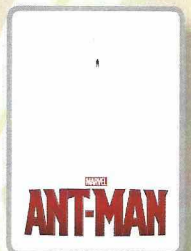
DOLBY 3D



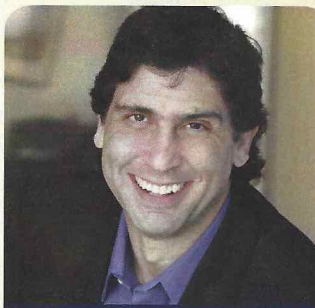
3:00 pm  
Duration: 1 hr 42 mins  
Rating: PG



5:15 pm & 7:45 pm  
Duration: 2 hrs 10 mins  
Rating: PG



10:45 pm  
Duration: 1 hr 57 mins  
Rating: PG-13



## ADULT VARIETY ACT

Featuring the  
Comedy of Wayne Cotter,  
as he entertains you in this  
adult exclusive show.

Fathoms (18+),  
Deck 3, Forward  
7:45 pm

## 'TIL WE MEET AGAIN

The world-famous Disney  
Characters and some of your  
new friends from the  
Walt Disney Theatre stage  
shows bid you a charming  
farewell.

Lobby Atrium,  
Deck 3, Midship,  
10:15 pm

## YOUTH ACTIVITIES OPEN HOUSE

Open House is an opportunity for all to come and participate in a variety of exciting activities and free time in the Oceaneer Club, Oceaneer Lab, it's a small world nursery, Vibe and Edge throughout the cruise. During these times secured programming will still be offered in the other venue for those looking to check their children into care.

Edge: 10:00 am - 11:00 am & 7:30 pm - 9:00 pm

Vibe: 10:30 am - 11:30 am & 6:00 pm - 7:30 pm

Disney's Oceaneer Club: 9:00 am - 10:30 am

Disney's Oceaneer Lab: 2:00 pm - 4:00 pm



# MORE TO ENJOY WHILE ONBOARD

## EASTERN, WESTERN & SOUTHERN CARIBBEAN

Disney Cruise Line offers a variety of 7-night sailings to exotic ports in the Eastern or Western Caribbean; including our new Eastern Caribbean port Tortola, in the British Virgin Islands. Or visit beautiful Martinique on our four limited-time Southern Caribbean sailings aboard the Disney Wonder, back by popular demand! Visit the Onboard Sales Desk for more information. Remember to ask about our special onboard booking offer!



## DISNEY VACATION CLUB® GROUP PREVIEW

Want to learn more about taking magical vacations year after year? Please see a Disney Vacation Club representative on Deck 4, Midship, or call 7-2805 from your stateroom phone for more information about our interactive group presentation.



## PORT SHOPPING INFORMATION

Tune into Channel 26-6 for VAT refund information. Stop by the Port & Shopping Desk, Deck 3, Midship between 7:30 pm and 8:30 pm with any Port Shopping Questions.



## PRO-COLLAGEN GROOMING TREATMENT

Receive a double close shave and anti-aging facial. This is a youth enhancing treatment which will leave his skin looking and feeling revitalized. A signature grooming treatment with a luxurious face, scalp, hand and arm massage.

50 minutes for \$95

Deck 9, Forward - Phone : 7-1465



### Anna & Elsa's BOUTIQUE

*At Anna & Elsa's Boutique, your dreams of snow in summer can come true, with the Disney Frozen Package.*

Deck 10, Midship





## FINAL DAY TO PURCHASE YOUR CRUISE MEMORIES

Today and tonight will be your last chance to purchase your digital photos, photo prints and Photobooks.

Shutters, on Deck 4, will be open until 11:00 pm, so don't miss out on bringing home all those cruise memories!

A friendly reminder that all Photobook orders need to be placed by 7:30 pm tonight.

## Connect @ Sea

Kindly be advised that after 10:00 pm today, new Internet packages will not be available for purchase. Available megabytes from existing packages can continue to be used until the moment of disembarkation. Possible service interruptions due to area configuration.

## CASH DECLARATION NOTICE

Guests going ashore in port with over 10,000 Euros (or cash equivalent in any other currency), are required to declare it to Customs upon arrival, or risk having it confiscated if stopped by local authorities.

## EARLY FLIGHT INFORMATION

Should you have a flight out of the London Heathrow or London Gatwick airports prior to 4:30 pm on debarkation morning kindly bring your airline tickets to Guest Services on Deck 3, Midship for additional information and assistance.

## BOOK ONBOARD AND SAVE!

Explore all the itineraries Disney Cruise Line offers - from the Caribbean and Bahamas to Alaska or Europe. Save when you book your next family adventure onboard!

## BAHAMIAN VOYAGES

The Bahamas are renowned the world over for breathtaking beaches, incredible recreation and exceptional shopping experiences. Pair your exotic escape with the world-class comfort and service of a Disney cruise and make your getaway complete.

## MORE MAGIC IN EUROPE

Set sail for Europe! Travel with Disney Cruise Line to the Mediterranean - a region that conjures up a romantic past. Home to some of the world's oldest civilizations, trade routes and cultures, this region offers a diverse blend of cities and cultures. Sail to such countries as Italy, France, Spain and Portugal. Begin your adventure today!

## STAR WARS™ DAY AT SEA

Get ready for a vacation that's out of this world! Disney Cruise Line is introducing Star Wars™ Day at Sea. Sail during January - April 2016 aboard the Disney Fantasy. One Epic Day. Eight Select Sailings.

## SHOPPING

### CAPTAIN'S SIGNING

Stop by White Caps at 12:15 pm to meet the Master of the Disney Magic Cruise Ship, Commodore Tom, and have your cruise mementos signed! Stunning replica ships are available in White Caps, Deck 4, Forward. Beautiful Disney Cruise Line prints are available in the Vista Gallery, Deck 4, Midship.

### THE RUSSIAN BAZAAR

Head to Sea Treasures today where you'll discover a wonderful array of Russian souvenirs including traditional crafts, amber, egg jewelry and selected beautiful works of original folk art.

### SOPHIA FIORI GUESS THE CARAT WEIGHT

Whoever guesses closest wins a Sophia Fiori fine jewelry piece! Winners announced tonight at 7:30 pm. Must be present to win. White Caps, Deck 4, Forward.

### LAST CHANCE TO VISIT THE VISTA GALLERY

Don't miss your last chance to visit the Vista Gallery where you can admire beautiful artwork created by various celebrated artists and featuring some of your favorite Disney characters. From original canvas paintings to smaller print copies, the Vista Gallery offers the opportunity for you to take some of the magic home! Deck 4, Midship.

### MAUI JIM SUNGLASSES

"A beautiful view of the world." Sunglasses of the future - ground breaking technology. Maui Jim polarized plus two lens technology provides unmatched protection and comfort. White Caps, Deck 4, Midship.

DM0937 08-02-2015 ©DISNEY

## IMPORTANT INFORMATION

### Security Notice

All Guests (including Children) who wish to disembark or embark the ship are required to present their Key to the World card at the gangway. A photo ID is also required for those Guests who are 18 years of age or older. Guests under the age of 18 are required to have a parent, guardian or other responsible adult sign an authorization form at the Guest Service Desk if they wish to go ashore unaccompanied or with any adult from another stateroom.

### Sunscreens/Insect Repellent Advisory

Use sunscreen first and protect against mosquito bites and related illnesses by applying insect repellent on top of sunscreen when going ashore. Insect repellent is available for purchase in White Caps.

### Verandah Safety

Please do not leave any combustible materials on your balcony when not present in your stateroom for safety reasons.

### Inclement Weather

For the safety of all Guests, outdoor events may be changed due to unforeseen weather conditions.

### Corridor Quiet Hours

As a courtesy to all our Guests, please recognize quiet hallway hours from 10:00 p.m. til 8:00 a.m.

### Environmental Message

With Disney's commitment to the Environment please refrain from throwing anything over the Ship's side. Thank you.

### No Reserved Seats Policy

As a courtesy to all Guests we kindly advise that the saving of seats is not permitted in the Walt Disney Theatre, and the saving of the sun loungers is not permitted on Deck 9 and 10. Items left unattended will be returned to lost and found at Guest Services, Deck 3, Midship.

### Sunbathing

Topless sunbathing is not allowed. Swimsuit tops must be worn at all times. Thong-style bottoms are not permitted.

### Smoking

For the comfort of our guests, the following areas are designated as smoking areas:

- Deck 10 Forward, Starboard Side
- Deck 9, Forward, Starboard Side at Quiet Cove
- Deck 4, Starboard Side from 6:00 p.m. to 6:00 a.m. only (all of Deck 4 is non-smoking from 6:00 a.m. to 6:00 p.m.)

Smoking is prohibited inside all guest staterooms and on stateroom verandahs. Guests found smoking in their staterooms or on their verandahs will be charged a \$250 stateroom recovery fee.

### Walt Disney Theatre

Theatrical performances may use artificial fog, strobe lights, pyrotechnics and other special effects. For the safety of our performers and the comfort of those around you, the use of any photography or video recording device or any electronic equipment is prohibited.

### Cold and Flu Reminder

Please wash hands frequently and thoroughly, particularly before meals. Contact the Health Center by dialing 7-1923, should anyone in your party become ill.



Morning	8:30	8:45	9:00	9:15	9:30	9:45	10:00	10:15	10:30	10:45	11:00	11:15	11:30	11:45	12:00	12:15	12:30	12:45	1:00	1:15	1:30
FUNNEL VISION	Lilo & Stitch (PG) Funnel Vision						Finding Nemo (G) Funnel Vision						Frozen (PG) Funnel Vision								
BUENA VISTA THEATRE	Alexander...Very Bad Day (PG) Duration: 1 Hour 21 Minutes						Inside Out (PG) <b>DOLBY 3D</b> Duration: 1 Hour 42 Minutes						Ant-Man (PG-13) <b>DOLBY 3D</b> Duration: 1 Hour 57 Minutes								
CHARACTERS	Hook & Smee Lobby Atrium (P)			Sofia DK4 Mid (S)			Cinderella, Suzy & Perla Lobby Atrium (P)			Character Dance Party Lobby Atrium											
FUN FOR ALL AGES	Toddler Time D Lounge		Disney Trivia Promenade Lounge		Animation: Stitch Promenade Lounge		Animation: Olaf Promenade Lounge		Bingo Pre Sales		Could Go Jackpot <b>BINGO</b> Fathoms		Disney Vacation Club D Lounge - Group Preview		Q&A with Jennifer Shrader Williams Fathoms		The Ultimate Quest Promenade Lounge				
	Walk A Mile Preludes		Mouseketeer Training Disney's Oceaneer Club		Youth Activities Open House Edge		Playmation Promenade Lounge		Jack-Jack's Diaper Dash Lobby Atrium		Captain's Signing White Caps		Ping Pong Tournament Wide World of Sports								
ADULTS	Interdenominational Service Keys (Guest Led)			Adult Crafts: 3D Crafts O'Gills Pub			Disney's ANTONIO CAN COOK Promenade Lounge		Singles' Mingle Cove Cafe		Club 18*21: Ice Cream Social Eye Scream		Veteran's Gathering O'Gills Pub								
	Friends of Bill W. Animator's Palate		Art of The Theme Show Tour Palo		British Music Trivia O'Gills Pub		Chocolate & Liquor Tasting (18+) Keys														
VIBE 14-17 YEARS OLD	Youth Activities Open House						Coffee Break		GOTCHA		Guesstures										
EDGE 11-14 YEARS OLD	Youth Activities Open House						Animation Antics		Disney Scene It		Ninja										
OCEANEER LAB 3-12 YEARS OLD	Lights, Camera, Improv!						GAGA Ball		Parachute Games		Animation Antics										
OCEANEER CLUB 3-12 YEARS OLD	Youth Activities Open House						The Royal Ball		Become Iron Man!		Lunch										
	Mouseketeer Training																				

Symbol for activities that will be repeated during the cruise

FOLD

Afternoon	1:45	2:00	2:15	2:30	2:45	3:00	3:15	3:30	3:45	4:00	4:15	4:30	4:45	5:00	5:15	5:30	5:45	6:00	6:15	6:30	6:45
FUNNEL VISION	Teen Beach 2 - (TV-G) Funnel Vision						Peter Pan (G) Funnel Vision						Bolt (PG) Funnel Vision								
BUENA VISTA THEATRE	Inside Out (PG) <b>DOLBY 3D</b> Duration: 1 Hour 42 Minutes						Tomorrowland (PG) Duration: 2 Hours 10 Minutes														
CHARACTERS	Pluto DK4 Mid (S)			Chip & Dale DK4 Mid (S)			Goofy DK4 Mid (S)			Donald Lobby Atrium (P)											
FUN FOR ALL AGES	JunNk Workshop Fathoms		The Comedy of <b>DANNY BUCKLER</b> Walt Disney Theatre		Disney Tunes Trivia Promenade Lounge		Bingo Pre Sales		FINAL Jackpot <b>BINGO</b> Fathoms		Talent Show Rehearsals D Lounge										
	Towel Folding D Lounge		Dance Class: Salsa Fathoms		Game Show: The Disney Wheel Promenade Lounge		Toddler Time Promenade Lounge		Live Piano with Joe Creamer Lobby Atrium												
ADULTS	Chip It Lobby Atrium (12+)		Art of The Theme Show Tour Palo		Origami Favorites O'Gills Pub		Movie Quotes Trivia O'Gills Pub		Disney Innovations O'Gills Pub		Singles' Mingle Cove Cafe		Club 18*21: 2000's Music Challenge O'Gills Pub								
VIBE 14-17 YEARS OLD	Anyone Can Cook: Cupcakes						Gender Wars		Ninja		Playmation		Youth Activities Open House								
EDGE 11-14 YEARS OLD	Marshmallow Olympics						Brains and Brawns		Disney Infinity		Trivia Challenge		Playmation								
OCEANEER LAB 3-12 YEARS OLD	Youth Activities Open House						4th Pigs Pasta Palace		Playmation		Friendship Rocks Prep		Friendship Rocks		Dinner						
OCEANEER CLUB 3-12 YEARS OLD	Dress Up Fun		Story Time with Belle		Craft Corner		Friendship Rocks		Friendship Rocks		Dinner										

Fold along the dotted lines and take me with you so you don't miss any of the fun!

FOLD

Evening	7:00	7:15	7:30	7:45	8:00	8:15	8:30	8:45	9:00	9:15	9:30	9:45	10:00	10:15	10:30	10:45	11:00	11:15	11:30	11:45	12:00
FUNNEL VISION	The Incredibles (PG) Funnel Vision						Bedtime Stories (PG) Funnel Vision														
BUENA VISTA THEATRE	Tomorrowland (PG) Duration: 2 Hours 10 Minutes						Ant-Man (PG-13) Duration: 1 Hour 57 Minutes														
CHARACTERS	Minnie Lobby Atrium (P)			Mickey Lobby Atrium (P)																	
FUN FOR ALL AGES			D Lounge				Live Music with Encore Duo Promenade Lounge		Live Music with Encore Duo Promenade Lounge		Live Music with Encore Duo Promenade Lounge										
	Variety: Wayne Cotter Fathoms		Live Irish Music O'Gills Pub		Brainteasers Trivia O'Gills Pub		Live Irish Music O'Gills Pub		Live Irish Music O'Gills Pub		Team Trivia O'Gills Pub		Club 18*21: Farewell Fathoms		Cruise Staff Farewell Fathoms		DJ Matt Fathoms		Live Irish Music O'Gills Pub		
ADULTS	Open House		Smoothie Hour		Pump It Up		Zombified Premiere		Final Farewell												
EDGE 11-14 YEARS OLD	Playmation		Youth Activities Open House		Gender Wars		How Well Do You Know Your Counselor?		Final Farewell Slideshow												
OCEANEER LAB 3-12 YEARS OLD	Anyone Can Cook						Final Farewell		Super Sloppy Science												
OCEANEER CLUB 3-12 YEARS OLD	Pluto's Pajama Party						Talent Show		Glow Jam		Playmation										

IN THE SPOTLIGHT SERIES

SOLO (IT) SERIES

JUMP UP! SERIES

CREATE & INVENT SERIES

OPEN HOUSE

CLUBHOUSE SERIES

STORYBOOK SERIES



# BUENA VISTA THEATRE

Deck 5, Aft

Open Captioning DOLBY 3D DOLBY 3D



8:30 am Duration: 1 hr 21 mins Rating: PG	10:15 am Duration: 1 hr 42 mins Rating: PG	12:30 pm Duration: 1 hr 42 mins Rating: PG-13	3:00 pm Duration: 1 hr 42 mins Rating: PG	5:15 pm & 7:45 pm Duration: 2 hrs 10 mins Rating: PG	10:45 pm Duration: 1 hr 57 mins Rating: PG-13
---	--	---	---	--	---

## Character Appearances

### CAPTAIN HOOK & MR SMEE

Lobby Atrium (P)  
9:15 am & 4:30 pm

### DOC MCSTUFFINS

DK4 Mid (S) - 9:30 am

### BELLE

Lobby Atrium (P) - 9:45 am

### PRINCESS SOFIA

DK4 Mid (S) - 10:00 am

### CINDERELLA, SUZY & PERLA

Lobby Atrium (P) - 10:15 am

### CHARACTER DANCE PARTY

Lobby Atrium - 12:15 pm

### JIMINY CRICKET

Lobby Atrium (P) - 3:00 pm

### PLUTO

DK4 Mid (S) - 3:15 pm

### PINOCCHIO

Lobby Atrium (P) - 3:30 pm

### CHIP & DALE

DK4 Mid (S) - 3:45 pm

### STITCH

Lobby Atrium (P) - 4:00 pm

### GOOFY

DK4 Mid (S) - 4:15 pm

### DONALD DUCK

Lobby Atrium (P) - 5:15 pm

### DAISY DUCK

Lobby Atrium (P) - 6:00 pm

### MINNIE MOUSE

Lobby Atrium (P) - 7:45 pm

### MICKEY MOUSE

Lobby Atrium (P) - 8:15 pm

### TIL WE MEET AGAIN

Lobby Atrium - 10:15 pm



(P) - Portside, (S) - Starboard Side

Don't forget your Camera to capture those Magical Moments!

Check here each day for Character appearances.

For detailed Character appearance information

see the Character Information Board in the Lobby Atrium.

Meet-and-Greets will be advertised for the length of time the line will be open. To avoid disappointment, please meet at start time of appearances.

## YOUTH ACTIVITIES THEMED EXPERIENCES

**CLUBHOUSE SERIES** focuses on movement and features content which appeals to younger children.

**JUMP UP! SERIES** includes large group games & movement-oriented activities.

**IN THE SPOTLIGHT SERIES** focuses on children's stage presence with lots of activities and enthusiasm.

**STORYBOOK SERIES** is designed with a strong connection to the Disney classic stories.

**CREATE & INVENT SERIES** will have a tactile focus allowing children to create and admire their work.

**SOLVE IT! SERIES** are less active, but will challenge children with problem/solutions-based activities.

### YOUTH ACTIVITIES OPEN HOUSE

Activities for families, adults and children of all ages to enjoy together.

## SHIP DIRECTORY

### YOUTH ACTIVITIES

DISNEY'S OCEANEER CLUB	DECK 5, MID	9:00 AM - 12:00 PM
DISNEY'S OCEANEER LAB	DECK 5, MID	9:00 AM - 12:00 PM
EDGE	DECK 2, MID	10:00 AM - 12:00 AM
IT'S A SMALL WORLD NURSERY	DECK 5, AFT	9:00 AM - 11:00 PM
VIBE	DECK 10, MID	10:30 AM - 1:00 AM

### POOLS

\*Children under 12 years of age must have adult supervision in all pools.

AQUADUNK	DECK 10, MID	10:00 AM - 11:45 AM 12:05 PM - 8:00 PM
AQUALAB	DECK 9, AFT	9:00 AM - 8:00 PM
GOOFY'S POOL	DECK 9, MID	9:00 AM - 6:00 PM 8:00 PM - 10:00 PM
NEPHEWS' SPLASH ZONE	DECK 9, AFT	9:00 AM - 6:00 PM
QUIET COVE POOL (18+)	DECK 9, FWD	8:00 AM - 10:00 PM
TWIST 'N' SPOUT	DECK 9, AFT	10:00 AM - 8:00 PM

Complimentary pool vests are available for children to use in the pools onboard. They are located on the pool deck.

### RECREATION

PORT ADVENTURES DESK	DECK 3, MID	11:00 AM - 1:30 PM
SENSES FITNESS CENTER (18+)	DECK 9, FWD	6:00 AM - 10:00 PM
WIDE WORLD OF SPORTS DECK	DECK 10, FWD	24 HOURS

### GENERAL INFORMATION

BUENA VISTA THEATRE	DECK 5, AFT	SHOWTIMES
DISNEY VACATION CLUB DESK	DECK 4, MID	9:00 AM - 12:00 PM 2:00 PM - 4:30 PM 6:00 PM - 10:00 PM
ONBOARD SALES DESK	DECK 4, MID	10:00 AM - 12:00 PM 3:00 PM - 6:00 PM 7:00 PM - 10:00 PM

FUNNEL VISION	DECK 9, MID	SHOWTIMES
GUEST SERVICES	DECK 3, MID	24 HOURS
HAIR BRAIDING	DECK 9, MID	10:00 AM - 12:00 PM 1:00 PM - 7:00 PM

MEDICAL HEALTH CENTER	DECK 1, FWD	9:30 AM - 11:00 AM 4:30 PM - 7:00 PM
-----------------------	-------------	---

PORT & SHOPPING DESK	DECK 3, MID	7:00 PM - 8:30 PM
PRELUDES	DECK 4, FWD	5:30 PM - 9:00 PM

QUARTER MASTERS (ARCADE)	DECK 9, MID	24 HOURS
SENSES SPA AND SALON	DECK 9, FWD	8:00 AM - 10:00 PM
SHUTTERS PHOTO GALLERY	DECK 4, AFT	10:00 AM - 11:00 PM
WALT DISNEY THEATRE	DECK 4, FWD	SHOWTIMES

### SHOPPING

ANNA & ELSA'S BOUTIQUE	DECK 10, MID	9:00 AM - 9:00 PM
MICKEY'S MAINSAIL	DECK 4, FWD	9:30 AM - 11:00 PM
QUACKS	DECK 9, MID	10:00 AM - 4:00 PM
SEA TREASURES	DECK 3, FWD	9:30 AM - 11:00 PM
VISTA GALLERY	DECK 4, MID	12:00 PM - 2:30 PM 4:30 PM - 10:00 PM
WHITE CAPS	DECK 4, FWD	9:30 AM - 11:00 PM

<b>DINNER MENU</b>	Animator's Palate: 'Til We Meet Again	<b>DRINK OF THE DAY</b> (Alcoholic) Lynchberg Lemonade Cookies and Cream (Non-Alcoholic)	<b>WEATHER FORECAST</b> Today: Overcast High: 68°F/20°C Tomorrow: Sunny High: 66°F/19°C
	Carioca's: 'Til We Meet Again		
	Lumiere's: 'Til We Meet Again		

Evening Attire: Cruise Casual

## DINING & LOUNGES

### BREAKFAST

CABANAS	DECK 9, AFT	7:30 AM - 11:15 AM
DAISY'S DE LITES	DECK 9, AFT	7:00 AM - 9:00 AM
LUMIERE'S	DECK 3, MID	8:30 AM - 10:00 AM

### LUNCH

CABANAS	DECK 9, AFT	11:45 AM - 2:15 PM
DAISY'S DE LITES	DECK 9, AFT	11:00 AM - 6:00 PM
LUMIERE'S	DECK 3, MID	12:00 PM - 1:30 PM
PALO (BRUNCH)	DECK 10, AFT	10:00 AM - 12:30 PM
PETE'S BOILER BITES	DECK 9, AFT	11:00 AM - 6:00 PM
PINOCCHIO'S PIZZERIA	DECK 9, MID	11:00 AM - 6:00 PM

### DINNER

ANIMATOR'S PALATE	DECK 4, AFT	6:00 PM & 8:30 PM
CARIOCA'S	DECK 3, AFT	6:00 PM & 8:30 PM
LUMIERE'S	DECK 3, MID	6:00 PM & 8:30 PM
PALO (FOR RESERVATIONS CALL 7-6843)	DECK 10, AFT	6:00 PM - 8:30 PM
PETE'S BOILER BITES	DECK 9, AFT	6:00 PM - 10:00 PM

### LATE NIGHT SNACKS

O'GILLS PUB	DECK 3, FWD	10:45 PM - 11:30 PM
PINOCCHIO'S PIZZERIA	DECK 9, MID	9:30 PM - 12:00 AM
PROMENADE LOUNGE	DECK 3, AFT	10:45 PM - 11:30 PM

### ADDED FEATURES

EYE SCREAM	DECK 9, AFT	11:00 AM - 11:00 PM
BEVERAGE STATION	DECK 9, AFT	24 HOURS
ROOM SERVICE	DIAL 7-4330	CLOSES AT 1:00 AM

### ENTERTAINMENT - LOUNGES - BARS

Adults must be 21 and older to consume alcoholic beverages.

AFTER HOURS	DECK 3, FWD	(AFTER 9:00 PM. ADULTS ONLY)
COVE CAFE (18+)	DECK 9, MID	6:30 AM - 12:00 AM
D LOUNGE	DECK 4, MID	SHOWTIMES
FATHOMS (18+)	DECK 3, FWD	7:00 PM - 2:00 AM
FROZONE TREATS	DECK 9, AFT	10:00 AM - 6:00 PM
INTERNET CAFE	DECK 3, AFT	24 HOURS
KEYS (18+)	DECK 3, FWD	6:30 PM - 12:30 AM
O'GILLS PUB (18+)	DECK 3, FWD	12:00 PM - 12:30 AM
PINOCCHIO'S PIZZERIA	DECK 9, MID	9:00 AM - 12:00 AM
PRELUDES	DECK 4, FWD	5:30 PM - 9:00 PM
PROMENADE LOUNGE	DECK 3, AFT	8:00 AM - 12:00 AM
SIGNALS (18+)	DECK 9, FWD	9:30 AM - 10:00 PM

Public Health Advisory: Consuming raw or undercooked meats, poultry, seafood, shellfish, or eggs may increase your risk for foodborne illness, especially if you have certain medical condition.

## IMPORTANT NUMBERS

Fire/Security: 7-3001  
Medical EMERGENCY: 7-3000  
Health Center: 7-1923