

# PERSONAL NAVIGATOR

Disney DREAM

THURSDAY, AUGUST 6, 2015

Sunrise: 6:39 am Sunset: 7:55 pm  
Evening Attire: Cruise Casual

Today: Sunny High: 84°F/29°C  
Tomorrow: Sunny High: 88°F/31°C

DAY AT SEA

## Disney's Believe

Genie from Aladdin and many of Disney's most beloved magic makers take a father on a magical journey to show him that anything is possible if you just believe.

WALT DISNEY THEATRE  
DECK 3 & 4, FORWARD

6:15 pm & 8:30 pm

As a courtesy to all Guests, we kindly advise that the saving of seats is **not** permitted in the Walt Disney Theatre.

Assistance available at the entrance to the Walt Disney Theatre 30 minutes prior to show time.

## Disney DREAM Fun Facts

**Tonnage:** 129,690

**Height:** 66.13 m (217 feet)

**Length:** 339.8 m (1114.7 feet)

### Important Dates

**Name Announcement:** March 2009

**Steel Cutting:** March 2009

**Keel Laying:** August 2009

**Delivery:** December 2010

### Did you know?

*The Sorcerer Mickey Mouse on the Disney Dream's stern is about 14 feet long. Constructed of stainless steel and fiberglass, it weighs approximately 2,500 pounds.*

SEA YA' REAL SOON!

Mickey and Minnie along with the rest of the Walt Disney Characters invite you to join them in the ship's atrium for Sea Ya Real Soon. You won't want to miss this very special farewell presentation.

Lobby Atrium,  
Deck 3, Midship,  
10:15 pm

## Don't Miss:

### Art of The Theme Show Tour (18+)

*Meridian, Deck 12, Aft - 9:00 am*

Join us for a guided tour highlighting the design, Imagineering and artistry of the Disney Dream. This tour is reserved for Guests 18 and over.

### Jack-Jack's Incredible Diaper Dash

*Lobby Atrium, Deck 3, Midship - 11:30 am*

Calling all baby cruisers! It's time to take to the mat to see who's the fastest crawler of the seven seas! Register your baby 15 minutes prior to the big race.

### Disney Animation: Creating a Character

*D Lounge, Deck 4, Midship - 1:15 pm*

Go behind the scenes at Walt Disney Animation Studios as Walt Disney himself talks about his most famous characters, then learn the basic techniques of drawing your favorite pals in this fun and interesting enrichment program.

### 80's Music Challenge (18+)

*Evolution, Deck 4, Aft - 10:15 pm*

"Moon Walk" back to the 80's as we put your musical knowledge of the decade to the test.

### Debark Talk Broadcast

Important information regarding disembarkation procedures for your journey home will be covered in this debarkation briefing. The broadcast will be shown continuously on channel 5 of your stateroom television for your convenience. Please place your luggage outside your stateroom between 8:30 - 10:30 pm.

Thank you in advance for completing your comment card.



### Visit The Onboard Sales Desk Early Today

Please visit the Onboard Sales Desk, Deck 4, Midship, as early as possible today. The last day of the cruise tends to get busy in the evening, and we want to be sure you have the opportunity to save 10% on your next cruise, receive up to a \$200 onboard credit, and pay a reduced deposit!

## DINNER MENU

Animator's Palate: Pacific Rim Crusine  
Enchanted Garden: Continental Market  
Royal Palace: French Dinner

## DRINK OF THE DAY

High Tide (Alcoholic)  
Princess Delight (Non Alcoholic)

### IMPORTANT NUMBERS

Fire/Security: 7-3001  
Medical Emergency: 7-3000  
Health Center: 7-1923



# ADULT ACTIVITY HIGHLIGHTS



## SENSES SPA FITNESS CLASSES & SEMINARS

*Wake Up & Stretch Class* - Senses Fitness Center - 7:00 am  
*Fab Abs* - Senses Fitness Center - 7:30 am  
*Body Sculpt Boot Camp* (Nom. Fee) - Senses Fitness Center - 8:00 am  
*Group Cycling* (Sign-Up Required) - Senses Fitness Center - 9:00 am  
*Yoga* (Sign-Up Required) - Senses Fitness Center - 10:00 am  
*Detox for Health & Weight Loss* - Senses Fitness Center - 11:00 am  
*Good Feet: Relieving Back Pain* - Senses Fitness Center - 2:00 pm

## TASTING CLASSES

*Chocolate & Liquor Tasting* (21+) - Pink: Wine and Champagne Bar - 12:15 pm  
*Mixology* (21+) - Skyline - 2:00 pm & 4:00 pm  
*Stem to Stern Wine Tasting* (21+) - Pink: Wine and Champagne Bar - 2:00 pm  
*Martini Tasting* (21+) - Meridian - 3:00 pm  
*Mojito & Caipirinha Tasting* (21+) - District Lounge - 3:00 pm  
Please make reservations for tastings at Guest Services for a nominal fee.  
Tasting Seminars are only for Guests 21 and older.

## CLUB 18\*21: LUNCH

*Royal Palace, Deck 3, Midship - 12:30 pm*  
Get to know your fellow 18\*21 Guests over lunch.



## CLUB 18\*21: JENGA CHALLENGE

*Pub 687, Deck 4, Aft - 4:30 pm*  
Have some fun with this classic game.

## CLUB 18\*21: FAREWELL

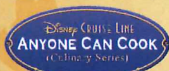
*Evolution, Deck 4, Aft - 9:45 pm*  
Join your Cruise Staff and your new friends in this last gathering for some fun.

## MOVIE QUOTES TRIVIA

*Pub 687, Deck 4, Aft - 1:15 pm*  
"Life is like a box of Chocolates" Know the movie? Join your Cruise Staff and test your Movie Quote knowledge.

## 90'S MUSIC TRIVIA

*Pub 687, Deck 4, Aft - 2:15 pm*  
"If you Wannabe" the winner, then join us as we test your 90's music knowledge.



## ANYONE CAN COOK - LOBSTER RAVIOLI

*D Lounge, Deck 4, Midship - 3:00 pm*  
From our galley to yours. Join our chefs as they show you how to prepare delicious dishes. Today's Menu - Lobster Ravioli



# FUN FOR ALL AGES HIGHLIGHTS



## PLAYMATION (6+)

*D Lounge, Deck 4, Midship - 9:15 am*  
The Avengers Need You: The battle begins October 4, but recruits can reserve their gear onboard today!

## \$10,000 MEGA JACKPOT BINGO

*Bingo Pre-Sales start at 10:45 am*  
*Evolution, Deck 4, Aft - 11:15 am*  
It's Big, it's Massive, it's Supersized! It's \$10,000 MEGA Jackpot Bingo! Take home \$10,000 if you can cover your card in 46 numbers or less. If not, we carry on to play for the biggest cash prize of the session, plus today's Disney Vacation Club sponsored raffle includes a \$100 Onboard Credit and prize-packs.



## JACK-JACK'S INCREDIBLE DIAPER DASH

*Lobby Atrium, Deck 3, Midship - 11:30 am*  
Calling all baby cruisers! It's time to take to the mat to see who's the fastest crawler of the seven seas! Register your baby 15 minutes prior to the big race.

## DISNEY VACATION CLUB GROUP PREVIEW

*D Lounge, Deck 4, Midship - 12:15 pm*  
Want to learn more about taking magical vacations year after year? Please see a Disney Vacation Club representative on Deck 4, Midship, or call 7-2805 from your stateroom phone for more information about our interactive group presentation.



## DISNEY ANIMATION: CREATING A CHARACTER

*D Lounge, Deck 4, Midship - 1:15 pm*  
Go behind the scenes at Walt Disney Animation Studios as Walt Disney himself talks about his most famous characters, then learn the basic techniques of drawing your favorite pals in this fun and interesting enrichment program.



## MICKEY 200

*Evolution, Deck 4, Aft - 2:30 pm*  
Don't eat your vegetables... race them in this wild and wacky charge to the finish line. May the best veggie win! (Limited Availability)



## FINAL JACKPOT BINGO

*Bingo Pre-Sales start at 3:45 pm*  
*D Lounge, Deck 4, Midship - 4:15 pm*  
The snowball jackpot MUST BE WON at this final session! Beat the line and get your cards early. Who will be the lucky winner?



## OFFICER PIN TRADING

*Preludes, Deck 3, Forward - 7:15 pm*  
Come trade pins with the Officers of the Disney Dream.



## CLUB NEW YEARS EVE

*Evolution, Deck 4, Aft - 7:30 pm*  
Club New Year's Eve, you won't want to miss this journey of musical genres in history and performances by some of your favorite Cruise Staff. Bring your family and help us count down to a brand new year!



## CLUB D DANCE PARTY

*D Lounge, Deck 4, Midship - 9:30 pm*  
Join your snazzy Cruise Staff as we turn D-Lounge into an electrifying family nightclub. Club D, where everyone is a V.I.P!

## DREAM QUEST

*D Lounge, Deck 4, Midship - 10:15 pm*  
Enjoy the wildest and wackiest scavenger team event on the seven seas!



## FAMILY SUPERSTAR KARAOKE

*D Lounge, Deck 4, Midship - 10:45 pm*  
Join your Cruise Staff in D Lounge tonight and sing along to your favorite song - fun for everyone.



# YOUTH ACTIVITIES HIGHLIGHTS

## Dine & Play

A convenience for families dining at 8:15 pm, our Youth Activities counselors will be available at 9:15 pm at the entrance of Royal Palace, Enchanted Garden and Animator's Palate dining rooms to bring registered children to join the fun in the Youth Activities areas.



*Deck 5, Midship (7-1440)*  
(3 - 12 years old)

10:30 am - 11:30 pm

## TOY STORY BOOT CAMP

11:00 am

Join Corporal Green in our own version of boot camp as we learn how to have fun - The Toy Story way!

## FLYING OFF TO NEVERLAND

9:00 pm

With our creative imaginations, we will fly to Neverland just like in one of our favorite Disney stories!



*Deck 5, Midship (7-1445)*  
(3 - 12 years old)

9:00 am - 12:00 am

## SPORTS DECK FUN

10:00 am

Take over the Sports Deck with some fun and friendly competition.

## STITCH'S FINAL FAREWELL

7:30 pm

We'll get a very special guest as we celebrate the grand finale to this cruise!



*Deck 13, Midship (7-9743)*  
(11 - 14 years old)

10:00 am - 12:00 am

## SUPER SLOPPY SCIENCE

11:30 am

Join Professor Make-O-Mess in some of the most extreme experiments you will ever see in the world of Super Sloppy Science!

## THAT'S HILARIOUS

10:15 pm

Ever wanted to show off your comedy skills? Then be a part of the cast for the crazy improv show "That's Hilarious" and put on a live show for your friends.



*Entrance on Deck 4, Forward (7-9417)*  
(14 - 17 years old)

11:00 am - 1:00 am

## ZOMBIFIED

12:15 pm

A big movie producer is looking for zombies to help him film the finale to his latest masterpiece, Zombified.

## MIX AND MATCH

11:15 pm

Try to find your "perfect match" in Disney's very own "Dating" game.

# BUENA VISTA THEATRE

Deck 4 & 5, Midship  
Today's Movies

**DOLBY 3D**



8:30 am  
Duration:  
1 hr 48 mins  
Rating: PG

**DOLBY 3D**



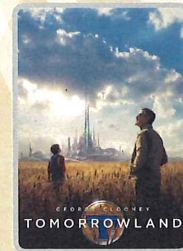
1:45 pm  
Duration:  
1 hr 57 mins  
Rating: PG-13



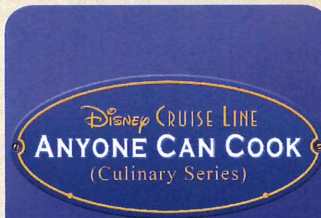
11:15 am  
Duration:  
1 hr 42 mins  
Rating: PG



5:15 pm & 8:15 pm  
Duration: 1 hr 57 mins  
Rating: PG-13



11:00 pm  
Duration: 2 hrs 10 mins  
Rating: PG



## FAMILY CULINARY SERIES

From our galley to yours.  
Join our chefs as they  
show you how to prepare  
delicious dishes.

Today's Menu  
Apple Strudel

*D Lounge,  
Deck 4, Midship,  
10:30 am*



## ADULT VARIETY ACT

*Repeat Show:*

Featuring the  
Comedy & Ventriloquism  
of Taylor Mason,  
as he entertains you in this  
adult exclusive show.

*Evolution (18+),  
Deck 4, Aft,  
10:45 pm*

## YOUTH ACTIVITIES OPEN HOUSE

Open House is an opportunity for all to come and participate in a variety of exciting activities and free time in the Oceaneer Club, Oceaneer Lab, Edge and Vibe throughout the cruise.  
During these times secured programming will still be offered in the other venues for those looking to check their children into care.

Disney's Oceaneer Club: 9:00 am - 10:30 am & 11:30 pm - 12:00 am

Disney's Oceaneer Lab: 4:00 pm - 5:30 pm

Edge: 9:00 am - 10:00 am & 5:30 pm - 7:00 pm

Vibe: 10:00 am - 11:00 am & 7:30 pm - 8:45 pm



# MORE TO ENJOY WHILE ONBOARD

## BOOK ONBOARD AND SAVE!

Explore all the itineraries Disney Cruise Line offers - from the Caribbean and Bahamas to Alaska or Europe. Save when you book your next family adventure onboard! Visit the Onboard Sales Desk for more information.

## DISNEY VACATION CLUB® GROUP PREVIEW

Want to learn more about taking magical vacations year after year? Please see a Disney Vacation Club representative on Deck 4, Midship, or call 7-2805 from your stateroom phone for more information about our interactive group presentation.

## STAY CONNECTED WITH CELLULAR SERVICE

Cell phone and wireless PDA service is available in Guest staterooms through most plans. Pricing varies depending upon your wireless provider and usually includes International roaming rates.



## SALON TASTER SPECIAL

Choose from a scalp massage, European facial, hand treatment, sunglow make-over, hair treatment, eye-collagen treatment, foot and ankle massage and neck and shoulder massage.

Three for \$99, five for \$119, and eight for \$139.

*Senses Spa & Salon, Deck 11, Forward, Ext. 7-1465*

## DISNEY INSPIRED DIAMOND COLLECTION

by SOPHIA FIORI  
DIAMONDS

ONLY AVAILABLE ONBOARD



## PROFESSIONAL PORTRAITS TONIGHT!

Grand Staircase - Groups Accommodated

5:15 pm - 6:30 pm  
7:15 pm - 8:30 pm

Visit Shutters for everything you need to capture your cruise photo memories. Now is the time to save on cameras and accessories with the best deals of the year! Extra special savings and gifts available with purchase, all at tax and duty free prices.

## EXPRESS WALK-OFF

This option allows you to take your luggage off the ship at your leisure once the ship has been cleared by the local authorities. You won't need to wait for your luggage to enter the terminal and there is no need to claim it inside the terminal building. Please note that no assistance with luggage is provided for this option.

## MIDSHIP DETECTIVE AGENCY

Use your detective know-how and our special detective "badge" to search the ship and catch your criminal! Deck 5, Midship Kiosks.

## Connect@Sea

We are now offering a NEW and improved Internet service to stay connected on your cruise like no other in the industry! Internet packages range from \$0.25 per MB - \$89.00 (1000 MB package). For more information contact your Connect@Sea Expert or Guest Services onboard.

## FREE ON DEMAND TV

Watch Disney movies, Hollywood features, and even captioned content, plus much more "On Demand" for FREE in the comfort of your stateroom! Bookmark your movie and come back to watch it later. Press MENU on your stateroom television remote control and follow the prompts.

## SHOPPING

### SOPHIA FIORI DISNEY INSPIRED JEWELRY

Don't miss your final chance to take home one of the sparkling diamond jewelry pieces from the Sophia Fiori Disney inspired diamond jewelry by visiting White Caps today! Deck 3, Forward.

### H2O PLUS SPA PRODUCTS

Can't get enough of your stateroom's moisturizing H2O Plus Spa products? From shampoo and conditioner to body lotion and after sun care, take home their marine-rich formulas available in White Caps, Deck 3, Forward.

### THE DISNEY PARKS COLLECTION BY PANDORA JEWELRY

The Disney Parks Collection by PANDORA Jewelry features hand-finished .925 sterling silver and 14K gold charms inspired by some of Disney's most beloved characters. Visit White Caps on Deck 3, Forward, where you'll find a specially designed sterling silver charm featuring a Disney Cruise Line ship.

### CAPTAIN'S SIGNING

Come to White Caps at 12:15 pm & 7:15 pm to have your Disney Dream merchandise signed by the Master of the Disney Dream, Captain Guus. Stunning replica ships are available in Sea Treasures, Deck 3, Forward. Beautiful Disney Cruise Line® prints are available in the Vista Gallery, Deck 4, Midship.

### OFFICER PIN TRADING

Check out the Disney Cruise Line pins when you visit Mickey's Mainsail. Later, join the Officers of the Disney Dream Cruise Ship for pin trading fun at 7:15 pm in Preludes, Deck 3, Forward.

### ERNST BENZ WATCHES

Manufactured in Switzerland and made in the time honored tradition of aviation timekeepers and the fine art of watch making, these large formats, self-winding instruments are renowned for their accuracy, durability and legibility. Stop by White Caps to see our full collection today! Deck 3, Forward.

## IMPORTANT INFORMATION

### Security Notice

All Guests (including children) who wish to disembark the ship are required to present their Key to the World card at the gangway. A photo ID is also required for those Guests who are 18 years of age or older. Guests under the age of 18 are required to have a parent, guardian or other responsible adult sign an authorization form at the Guest Service Desk if they wish to go ashore unaccompanied or with any adult from another stateroom.

### Inclement Weather

For the safety of all Guests, outdoor events may be changed due to unforeseen weather conditions.

### Cold and Flu Reminder

Please wash hands frequently and thoroughly; particularly before meals. Contact the Health Center by dialing 7-1923, should anyone in your party become ill.

### Corridor Quiet Hours

As a courtesy to all our Guests, please recognize quiet hallway hours from 10:00 pm - 8:00 am.

### Sunscreen/Insect Repellent Advisory

Use sunscreen first and protect against mosquito bites and related illnesses by applying insect repellent on top of sunscreen when going ashore. Insect repellent is available for purchase in White Caps.

### Environmental Message

With Disney's commitment to the environment, please refrain from throwing anything over the ship's side. Thank you!

### No Reserved Seats Policy

As a courtesy to all our Guests, we kindly advise that the saving of seats is not permitted in the Walt Disney Theatre, and the saving of the sun loungers is not permitted on Deck 11, 12 and 13. Items left unattended will be returned to lost and found at Guest Services, Deck 3, Midship.

### Smoking

For the comfort of our guests the following areas are designated as Smoking areas:

- Deck 13, Forward, port side, by "Currents"
- Deck 12, Aft, port side outdoor area that is accessible through the Meridian Lounge
- Deck 4, Aft, port side, the outside Promenade Deck from 6:00 pm to 6:00 am only (all of Deck 4 is no smoking from 6:00 am to 6:00 pm).
- Smoking is prohibited inside all Guest staterooms and on stateroom verandahs. Guests found smoking in their staterooms or on their verandahs will be charged a \$250 stateroom recovery fee. Electronic cigarettes may only be used in designated smoking areas.

### Walt Disney Theatre

Theatrical performances may use artificial fog, strobe lights, pyrotechnics and other special effects. For the safety of our performers and the comfort of those around you, the use of any photography, video recording devices or any electronic equipment is prohibited.

### Verandah Safety

Please do not leave any combustible materials on your balcony when not present in your stateroom for safety reasons.



 Symbol for activities that will be repeated during the cruise

Fold along the dotted lines and take me with you  
so you don't miss any of the fun!

—▶▶— FOLD —▶▶—

IN THE SPOTLIGHT SERIES  
SOLVE IT! SERIES

**JUMP UP! SERIES**  
**CREATE & INVENT SERIES**  
**ADRENALINCE**

CLUBHOUSE SERIES  
STORYBOOK SERIES



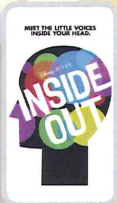
THURSDAY, AUGUST 6, 2015 - DAY AT SEA

# BUENA VISTA THEATRE

Deck 4 & 5, Midship

DOLBY 3D

DOLBY 3D



8:30 am Duration: 1 hr 48 mins Rating: PG	11:15 am Duration: 1 hr 42 mins Rating: PG	1:45 pm Duration: 1 hr 57 mins Rating: PG-13	5:15 pm & 8:15 pm Duration: 1 hr 57 mins Rating: PG-13	11:00 pm Duration: 2 hrs 10 mins Rating: PG
--	---	---	--	--

## Character Appearances

### PRINCESS MINNIE

Deck 4, Balcony  
9:00 am & 10:00 am

### TINKER BELL

Lobby Atrium (V) - 9:15 am

### DOPEY

Deck 4, Balcony  
9:30 am & 10:30 am

### CHARACTER DANCE PARTY

Lobby Atrium - 12:15 pm

### CINDERELLA

Lobby Atrium (P) - 2:30 pm

### CAPTAIN HOOK & MR SMEE

Deck 4, Balcony - 2:45 pm

### BELLE

Lobby Atrium (P) - 3:00 pm

### STITCH

Deck 4, Balcony - 3:15 pm

### SNOW WHITE

Lobby Atrium (P) - 3:30 pm

### RAPUNZEL

Lobby Atrium (P) - 4:00 pm

### DONALD DUCK

Deck 4, Balcony - 4:15 pm

### CHIP & DALE

Lobby Atrium (V) - 4:30 pm

### DAISY DUCK

Deck 4, Balcony - 4:45 pm

### GOOFY

Lobby Atrium (V) - 5:00 pm

### MICKEY MOUSE

Deck 4, Balcony  
5:15 pm & 7:15 pm

### PLUTO

Lobby Atrium (V) - 5:30 pm

### MINNIE MOUSE

Lobby Atrium (V) - 7:30 pm

### PRINCESS APPEARANCES

D Lounge - 7:30 pm

### SEA YA REAL SOON

Lobby Atrium - 10:15 pm

## YOUTH ACTIVITIES THEMED EXPERIENCES

### CLUBHOUSE SERIES

focuses on movement and features content which appeals to younger children.

### STORYBOOK SERIES

is designed with a strong connection to the Disney classic stories.

### JUMP UP! SERIES

includes large group games & movement-oriented activities.

### CREATE & INVENT SERIES

will have a tactile focus allowing children to create and admire their work.

### OPEN HOUSE

activities for families, adults and children of all ages to enjoy together.

### IN THE SPOTLIGHT SERIES

focuses on children's stage presence with lots of activities and enthusiasm.

### SOLVE IT! SERIES

are less active, but will challenge children with problem/solutions-based activities.

## SHIP DIRECTORY

### YOUTH ACTIVITIES

DISNEY'S OCEANEER CLUB	DECK 5, MID	10:30 AM - 11:30 PM
DISNEY'S OCEANEER LAB	DECK 5, MID	9:00 AM - 12:00 AM
EDGE	DECK 13, MID	10:00 AM - 12:00 AM
VIBE	DECK 4, FWD	11:00 AM - 1:00 AM
IT'S A SMALL WORLD NURSERY	DECK 5, MID	9:00 AM - 12:00 AM

### POOLS & MORE

\* Children under 12 must have adult supervision in pool areas.

AQUADUCK	DECK 12, AFT	9:00 AM - 11:00 PM
DONALD'S POOL	DECK 11, MID	9:00 AM - 6:00 PM
		8:00 PM - 10:00 PM
MICKEY'S POOL	DECK 11, MID	8:30 AM - 10:30 PM
MICKEY'S SLIDE	DECK 11, MID	9:00 AM - 6:00 PM
NEMO'S REEF	DECK 11, MID	9:00 AM - 6:00 PM
QUIET COVE POOL (18+)	DECK 11, FWD	8:00 AM - 10:00 PM

Complimentary pool vests are available for children to use in the pools onboard.  
Located on the pool deck.

### RECREATION

GOLF/SPORTS SIMULATOR	DECK 13, AFT	9:00 AM - 6:00 PM
GOOFY GOLF	DECK 13, AFT	
GOOFY'S SPORTS DECK	DECK 13, AFT	12:00 AM - 10:00 AM
		1:00 PM - 6:00 PM
MIDSHIP DETECTIVE AGENCY	DECK 5, MID	8:00 AM - 11:00 PM
PORT ADVENTURES DESK	DECK 5, MID	
SENSES FITNESS CENTER (18+)	DECK 11, FWD	6:00 AM - 10:00 PM

### GENERAL INFORMATION

ARR-CADE	DECK 11, AFT	24 HOURS
BUENA VISTA THEATRE	DECK 4 & 5, MID	SHOWTIMES
DISNEY VACATION CLUB	DECK 4, MID	9:00 AM - 11:00 AM
		1:30 PM - 10:00 PM
GUEST SERVICES	DECK 3, MID	24 HOURS
HAIRBRADING	DECK 11, MID	8:00 AM - 9:30 PM
MEDICAL HEALTH CENTER	DECK 1, FWD	9:30 AM - 11:00 AM
		4:30 PM - 7:00 PM
ONBOARD SALES DESK	DECK 4, MID	9:00 AM - 12:00 PM
		2:00 PM - 6:00 PM
		7:15 PM - 10:00 PM
PORT & SHOPPING DESK	DECK 4, MID	
PRELUDES	DECK 3, FWD	5:45 PM - 6:30 PM
		8:00 PM - 8:45 PM
SENSES SPA AND SALON	DECK 11, FWD	8:00 AM - 10:00 PM
SHUTTERS PHOTO GALLERY	DECK 4, MID	10:00 AM - 11:30 PM
WALT DISNEY THEATRE	DECK 3 & 4, FWD	SHOWTIMES

### SHOPPING

MICKEY'S MAINSAIL	DECK 3, FWD	9:30 AM - 11:00 PM
SEA TREASURES	DECK 3, FWD	9:30 AM - 11:00 PM
QUACKS	DECK 11, MID	
VISTA GALLERY	DECK 4, MID	10:00 AM - 11:00 PM
WHITE CAPS	DECK 3, FWD	9:30 AM - 11:00 PM
WHOZITS & WHATZITS	DECK 11, MID	10:00 AM - 4:00 PM
		7:00 PM - 10:00 PM

## IMPORTANT NUMBERS

Fire/Security: 7-3001  
Medical Emergency: 7-3000  
Health Center: 7-1923

<b>DINNER MENU</b>	Animator's Palate: Pacific Rim Cuisine	<b>DRINK OF THE DAY</b>	High Tide (Alcoholic)	<b>WEATHER FORECAST</b>	Today: Sunny
	Enchanted Garden: Continental Market Cuisine		Princess Delight (Non Alcoholic)		High: 84°F/29°C
	Royal Palace: French Dinner				Tomorrow: Sunny
Dining Times: 5:45 pm & 8:15 pm					High: 88°F/31°C

**Evening Attire: Cruise Casual**

## DINING & LOUNGES

### BREAKFAST

CABANAS CONTINENTAL	DECK 11, AFT	7:00 AM - 7:30 AM
CABANAS	DECK 11, AFT	7:30 AM - 10:45 AM
ENCHANTED GARDEN	DECK 2, MID	9:00 AM - 12:00 PM
ROYAL PALACE	DECK 3, MID	8:00 AM - 9:30 AM

### LUNCH

CABANAS	DECK 11, AFT	11:45 AM - 2:15 PM
FILLMORE'S FAVORITES	DECK 11, MID	10:30 AM - 6:00 PM
LUIGI'S PIZZA	DECK 11, MID	10:30 AM - 6:00 PM
ROYAL PALACE	DECK 3, MID	12:00 PM - 1:30 PM
TOW MATER'S GRILL	DECK 11, MID	10:30 AM - 6:00 PM

### DINNER

ANIMATOR'S PALATE	DECK 3, AFT	5:45 PM & 8:15 PM
ENCHANTED GARDEN	DECK 2, MID	5:45 PM & 8:15 PM
PALO (18+) (RESERVATIONS REQ. & NOM. FEE APPLIES)	DECK 12, AFT	6:00 PM - 8:30 PM
REMY (18+) (RESERVATIONS REQ. & NOM. FEE APPLIES)	DECK 12, AFT	6:00 PM - 8:30 PM
ROYAL PALACE	DECK 3, MID	5:45 PM & 8:15 PM
TOW MATER'S GRILL	DECK 11, MID	6:00 PM - 11:00 PM

### LATE NIGHT SNACKS

LUIGI'S PIZZA	DECK 11, MID	9:30 PM - 12:00 AM
---------------	--------------	--------------------

### ADDED FEATURES

BEVERAGE STATION	DECK 11, MID	24 HOURS
EYE SCREAM	DECK 11, MID	10:30 AM - 12:00 AM
ROOM SERVICE	DIAL 0	CLOSES AT 1:30 AM

## ENTERTAINMENT - LOUNGES - BARS

Adults must be 21 and older to consume alcoholic beverages.

BON VOYAGE	DECK 3, MID	9:00 AM - 11:00 PM
COVE BAR (18+)	DECK 11, FWD	10:00 AM - 10:30 PM
COVE CAFE (18+)	DECK 11, FWD	7:00 AM - 12:00 AM
CURRENTS (18+)	DECK 13, FWD	10:00 AM - 11:00 PM
D LOUNGE	DECK 4, MID	SHOWTIMES
DISTRICT LOUNGE (18+ AFTER 9:00 PM)	DECK 4, AFT	12:00 PM - 2:00 AM
EVOLUTION (18+)	DECK 4, AFT	9:30 PM - 12:00 AM
FROZONE TREATS	DECK 11, MID	10:00 AM - 10:00 PM
MERIDIAN (18+)	DECK 12, AFT	5:00 PM - 12:00 AM
OUTLOOK (18+)	DECK 14, MID	
PINK: WINE AND CHAMPAGNE BAR (18+)	DECK 4, AFT	5:00 PM - 12:00 AM
PUB 687 (18+ AFTER 9:00 PM)	DECK 4, AFT	5:00 PM - 12:00 AM
SKYLINE (18+)	DECK 4, AFT	5:00 PM - 12:00 AM
VISTA CAFE	DECK 4, MID	7:00 AM - 11:00 PM
WAVES	DECK 12, AFT	10:00 AM - 6:00 PM

Public Health Advisory: Consuming raw or under-cooked meats, poultry, seafood, shellfish, or eggs may increase your risk for food borne illness, especially if you have certain medical condition.



## CHARACTER DANCE PARTY

Put your dancing shoes on and join some of your favorite Disney Friends in the Lobby Atrium, Deck 3, Midship for fun and dancing.  
**12:15 pm**

(H) Hallway - (S) Starboard Side - (P) Port Side - (V) Vestibule  
For details of daily Disney character appearances, refer to the character line on your Navigator Grid, or the digital character board in the Lobby Atrium.