

PERSONAL NAVIGATOR

THURSDAY, JULY 9, 2015



Sunrise: 4:22 am Sunset: 9:15 pm
Evening Attire: Cruise Casual

Today: Overcast High: 60°F/16°C
Tomorrow: Sunny High: 66°F/19°C

DAY AT SEA

Disney DREAMS

AN ENCHANTED CLASSIC

In this spectacular fantasy, a little girl discovers the power of her dreams. Fly through the air with Peter Pan, your imagination, and many of your favorite Disney stories – including Disney's newest classic, Frozen! With a little Faith, Trust and Pixie Dust, you'll see that dreams really can come true!

WALT DISNEY THEATRE

Deck 4, Forward

6:30 pm & 8:45 pm

As a courtesy to all Guests, we kindly advise that the saving of seats is **not** permitted in the Walt Disney Theatre.

As a courtesy to all Guests, we kindly advise that the saving of seats is **not** permitted in the Walt Disney Theatre.



Assistance available at the entrance to the Walt Disney Theatre 30 minutes prior to show time.

Disney MAGIC Fun Facts

Walt Disney Theatre - Technical:

Q: How many mirrors and sequins are there on the Cinderella Carriage in Twice Charmed?
A: 1012.

Q: How heavy are the Hades steps in Villains Tonight?
A: 800lbs.

Q: How many audio speakers are in the Walt Disney Theatre
A: 56.

Q: How many loads of laundry are washed in the Walt Disney Theatre per week?
A: Just under 50 loads.

Q: How many technicians are needed to run a Disney production show in the Walt Disney Theatre?
A: 11 technicians.

Q: How many lights are in the Walt Disney Theatre?
A: Approximately 70 intelligent lights and 200 generic lights.



FAMILY VARIETY ACT

Featuring the
Comedy and Rhythm
of Junnk in this fun,
family show.

Walt Disney Theatre,
Deck 4, Forward
2:00 pm
(Doors open at 1:45 pm)

Debark Talk Broadcast

Important information regarding disembarkation procedures for your journey home will be covered in this debarkation briefing. The broadcast will be shown continuously on channel 24-2 of your stateroom television for your convenience.

Thank you in advance for completing your comment card.

Don't Miss:

Wake up with Disney Junior
D Lounge, Deck 4, Midship - 8:30 am

What happens when you experience unlimited fun with your favorite Disney Junior shows? You get an exciting dance party designed especially for preschoolers ages seven and under.

Dover: White Cliffs and a Fascinating History
Buena Vista Theatre, Deck 5, Aft - 11:15 am

Dover is the site of one of history's greatest military victories. During World War II, The United States and its allies, rather than attacking Calais from Dover, instead bluffed the Germans into believing that the invasion would cross from Dover. Join Historian Jeffrey Morton for a look at the complicated process of preparing a fake invasion from Dover so as to make the actual invasion of Normandy a success. (This will be replayed on channel 26-8)

Q&A with Michelle Mallardi
Fathoms, Deck 3, Forward - 1:00 pm

You've seen her perform, now is your chance to ask your questions and get an autograph from a Broadway star!

Cruise Staff Farewell (18+)

Fathoms, Deck 3, Forward - 10:45 pm
Join your Club Host and the Cruise Staff team and see our version of the funniest skit on the high seas, "If I Were Not Upon The Sea."

DINNER MENU

Animator's Palate: "Til We Meet Again
Carioca's: "Til We Meet Again
Lumiere's: "Til We Meet Again

DRINK OF THE DAY

Bay Breeze (Alcoholic)
Parrot Song (Non-Alcoholic)

IMPORTANT NUMBERS

Fire/Security: 7-3001
Medical Emergency: 7-3000
Health Center: 7-1923

ADULT ACTIVITY HIGHLIGHTS



SENSES SPA FITNESS CLASSES & SEMINARS

Sunrise Stretch - Senses Spa Fitness Center - 7:00 am
Fab Abs - Senses Spa Fitness Center - 7:30 am
Group Cycling - Senses Spa Fitness Center - 8:00 am
Body Sculpt Boot Camp (Nom. Fee) - Senses Spa Fitness Center - 9:00 am
Acupuncture Pain Relief - Senses Spa Fitness Center - 10:00 am
Secrets to a Flatter Stomach - Senses Spa & Salon - 11:00 am
Good Feet: Relieving Back Pain - Senses Spa & Salon - 2:00 pm

TASTING CLASSES

Whiskey Tasting (18+) - Keys - 2:00 pm

Please make reservations for tastings at Guest Services for a nominal fee. Guests 18 to 20, whose parent or guardian has completed a beverage consent form, may attend with their parent or guardian.

CLUB 18*21: LUNCH

Lumiere's, Deck 3, Midship - 12:00 pm

Get to know your fellow 18*21 Guests over a spot of lunch.

CLUB 18*21: 2000'S MUSIC CHALLENGE

O'Gills Pub, Deck 3, Forward - 5:15 pm

Join your Cruise Staff as we navigate our way through the music of the 2000's.

CLUB 18*21: FAREWELL

Fathoms, Deck 3, Forward - 10:30 pm

Join your Cruise Staff and your new friends in this last gathering for some fun.

ANYONE CAN COOK - APPLE STRUDEL

D Lounge, Deck 4, Midship - 10:30 am

From our galley to yours. Join our chefs as they show you how to prepare delicious dishes. Today's Menu - Apple Strudel.

NAPKIN FOLDING

D Lounge, Deck 4, Midship - 11:15 am

Learn how to fold a napkin to impress your guests at your next dinner party.

DISNEY'S INNOVATIONS: THEME PARKS

O'Gills Pub, Deck 3, Forward - 1:45 pm

Join us for our presentation showing the "Top 10" greatest innovations that the Walt Disney Company has introduced to theme parks.

FUN FOR ALL AGES HIGHLIGHTS



WAKE UP WITH DISNEY JUNIOR

D Lounge, Deck 4, Midship - 8:30 am

What happens when you experience unlimited fun with your favorite Disney Junior shows? You get an exciting dance party designed especially for preschoolers ages seven and under.

COULD GO BINGO

Bingo Pre-Sales start at 10:30 am

Fathoms, Deck 3, Forward - 10:45 am

Four CASH prizes to be won! The snowball jackpot continues to grow and could go at this morning's session. Plus, today's Disney Vacation Club sponsored raffle includes a \$100 Onboard Credit and prize packs. Pre-Sales start 15 minutes prior to game.

MAINSTAGE Q&A (12+)

O'Gills, Deck 3, Forward - 11:30 am

Get your questions ready for Disney Cruise Line's Cast from the Walt Disney Theatre!

DISNEY VACATION CLUB GROUP PREVIEW

D Lounge, Deck 4, Midship - 12:15 pm

Want to learn more about taking magical vacations year after year? Please see a Disney Vacation Club representative on Deck 4, Midship, or call 7-2805 from your stateroom phone for more information about our interactive group presentation.

TOWEL FOLDING

D Lounge, Deck 4, Midship - 2:30 pm

Learn to create those amazing towel creatures you've seen in your stateroom all cruise long.

DANCE CLASS: SAMBA

Fathoms, Deck 3, Forward - 3:00 pm

Join our professional dance instructor as he teaches you how to Samba.

STEERING COMMITTEE HIDE & SEEK

D Lounge, Deck 4, Midship - 3:00 pm

Join the Disney Magic Steering Committee for this fun game of hide 'n' seek unlike anything you have ever played before.

TALENT SHOW REHEARSALS

D Lounge, Deck 4, Midship - 3:45 pm

A rehearsal time for those registered for our show.

FINAL JACKPOT BINGO

Bingo Pre-Sales start at 4:00 pm

Walt Disney Theatre, Deck 4, Forward - 4:30 pm

The snowball jackpot **MUST BE WON** at this final session! Beat the line and get your cards early. Who will be the lucky winner? It could be you! Pre-Sales start 30 minutes prior to game.

BALLROOM DANCING

Fathoms, Deck 3, Forward - 7:30 pm

The dance floor is open for those wanting to enjoy an elegant evening of ballroom dancing.

FAMILY TALENT SHOW

D Lounge, Deck 4, Midship - 7:45 pm

Your fellow Guests have rehearsed and are ready to show off their talents.

CLUB
18*21



YOUTH ACTIVITIES HIGHLIGHTS

DINE & PLAY

As a convenience for families dining at 8:30 p.m., our Youth Activities Counselors will be available at 9:30 p.m. at the entrance of Lumiere's, Carioca's and Animator's Palate to bring registered children to join the fun in Disney's Oceaneer Club and Disney's Oceaneer Lab.



Deck 5, Aft (7-5864)

9:00 am - 11:00 pm

Infants and Toddlers can enjoy toys and activities at It's a small world nursery. Reservations are first come, first served so please stop by!



Deck 5, Midship (7-1439)
(3-12 years old)

9:00 am - 12:00 am

MOUSEKETEER TRAINING

10:45 am

Take part in training exercises to become an Official Mouseketeer.

STORY TIME WITH BELLE

2:30 pm

Come to the Oceaneer Club and listen to one of your favorite Disney stories: Beauty & the Beast!



Deck 5, Midship (7-1445)
(3-12 years old)

9:00 am - 12:00 am

LIGHTS, CAMERA, IMPROV!

9:15 am

Perform an improv skit as you discover the wonders of drama and music on stage in front of a live audience.

SPORTS DECK FUN

11:00 am

Take over the Sports Deck with some fun and friendly competition.



Deck 2, Midship (7-5816)
(11-14 years old)

10:00 am - 12:00 am

BRAINS AND BRAWNS

3:00 pm

You will compete against each other to solve clues, take part in physical challenges, and reach the finish first.

HOW WELL DO YOU KNOW YOUR COUNSELOR?

10:00 pm

Do you think you know all there is to know about your counselors? Come test out your knowledge with all of your friends!



Deck 10, Midship (7-18517)
(14-17 years old)

10:30 am - 1:00 am

GOTCHA

12:00 pm

You will try to eliminate your victim by various methods collecting points throughout the day, last person standing with the most points wins.

ZOMBIFIED PREMIERE

10:15 pm

It's premiere night for the latest zombie movie starring YOU!

BUENA VISTA THEATRE

Deck 5, Aft

Today's Movies

OC Open Captioning

DOLBY.3D

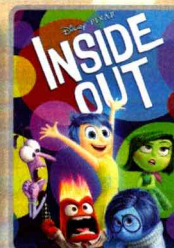
DOLBY.3D



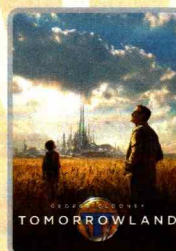
8:30 am
Duration:
1 hr 52 mins
Rating: PG



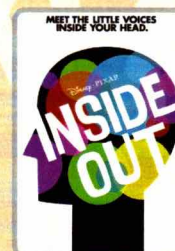
12:15 pm
Duration:
2 hrs 22 mins
Rating: PG-13



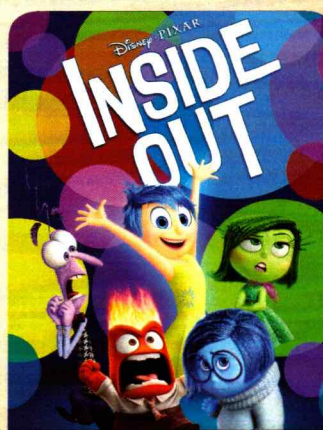
3:00 pm
Duration:
1 hr 42 mins
Rating: PG



5:15 pm & 7:45 pm
Duration: 2 hrs 10 mins
Rating: PG



10:45 pm
Duration: 1 hr 42 mins
Rating: PG



MOVIE SPECIAL

WALT DISNEY THEATRE

DOLBY.3D

10:00 am

(Doors open 15 minutes prior)

'TIL WE MEET AGAIN

The world-famous Disney Characters and some of your new friends from the Walt Disney Theatre stage shows bid you a charming farewell.

Lobby Atrium,
Deck 3, Midship,
10:15 pm

YOUTH ACTIVITIES OPEN HOUSE

Open House is an opportunity for all to come and participate in a variety of exciting activities and free time in the Oceaneer Club, Oceaneer Lab, it's a small world nursery, Vibe and Edge throughout the cruise. During these times secured programming will still be offered in the other venue for those looking to check their children into care.

Edge: 10:00 am - 11:00 am & 7:30 pm - 9:00 pm

Vibe: 10:30 am - 11:30 am & 6:00 pm - 7:30 pm

Disney's Oceaneer Club: 9:00 am - 10:30 am

Disney's Oceaneer Lab: 2:00 pm - 4:00 pm

MORE TO ENJOY WHILE ONBOARD



STAR WARS™ DAY AT SEA

Get ready for a vacation that's out of this world! Disney Cruise Line is introducing Star Wars™ Day at Sea. Sail during January - April 2016 aboard the Disney Fantasy. One Epic Day. Eight Select Sailings. Visit the Onboard Sales Desk for more information.



DISNEY VACATION CLUB® GROUP PREVIEW

Want to learn more about taking magical vacations year after year? Please see a Disney Vacation Club representative on Deck 4, Midship, or call 7-2805 from your stateroom phone for more information about our interactive group presentation.

QUARTER MASTERS ARCADE


Ever dreamed of flying high in the Sky? On After Burner feel the adrenaline while you are a Pilot traveling on a turbulence adventure, in the exclusive Quarter Masters Arcade, located on Deck 9, Midship.



Deck 9, Forward - Phone: 7-1465

ELEMIS OXYDERMY FACIAL


Give your skin what it has been craving. Now you can fight lines, wrinkles, spots and get the radiant glow that's been eluding you. Let us pamper your skin with our new cutting-edge technology that brings Microdermabrasion and Oxygen together in one luxurious treatment. We will cleanse, polish, and massage your skin into sweet oblivion using our new dual Microdermabrasion/Oxygen system and Elemis skincare.
50 minutes for \$169



Anna & Elsa's
BOUTIQUE

*At Anna & Elsa's Boutique,
your dreams of snow in
summer can come true, with
the Disney Frozen Package.*

Deck 10, Midship





FINAL DAY TO PURCHASE YOUR CRUISE MEMORIES

Today and tonight will be your last chance to purchase your digital photos, photo prints and PhotoBooks.

Shutters, on Deck 4, will be open until 11:00 pm, so don't miss out on bringing home all those cruise memories!

Connect@Sea

Kindly be advised that after 10:00 pm today, new Internet packages will not be available for purchase. Available megabytes from existing packages can continue to be used until the moment of disembarkation. Possible service interruptions due to area configuration.

EARLY FLIGHT INFORMATION

Should you have a flight out of the London Heathrow or London Gatwick airports prior to 3:00 pm on debarkation morning kindly bring your airline tickets to Guest Services on Deck 3, Midship for additional information and assistance.

BOOK ONBOARD AND SAVE!

Explore all the itineraries Disney Cruise Line offers - from the Caribbean and Bahamas to Alaska or Europe. Save when you book your next family adventure onboard!

BAHAMIAN VOYAGES

The Bahamas are renowned the world over for breathtaking beaches, incredible recreation and exceptional shopping experiences. Pair your exotic escape with the world-class comfort and service of a Disney cruise and make your getaway complete.

MORE MAGIC IN EUROPE

Set sail for Europe! Travel with Disney Cruise Line to the Mediterranean - a region that conjures up a romantic past. Home to some of the world's oldest civilizations, trade routes and cultures, this region offers a diverse blend of cities and cultures. Sail to such countries as Italy, France, Spain and Portugal. Begin your adventure today!

SHOPPING

CAPTAIN'S SIGNING

Stop by White Caps at 12:15 pm to meet the Master of the Disney Magic, Commodore Tom, and have your cruise mementos signed! Stunning replica ships are available in White Caps, Deck 4, Forward. Beautiful Disney Cruise Line prints are available in the Vista Gallery, Deck 4, Midship.

VERA BRADLEY BAGS AND ACCESSORIES

With their distinctive and colorful fabrics and trims, view our collection of Vera Bradley bags and accessories including the new Vera Bradley tote bags designed especially for Disney Cruise Line® available at White Caps, Deck 4, Forward.

CAPTURE YOUR DISNEY CRUISE MEMORIES!

Treasure the memories you're making on this Norwegian holiday with the Disney Cruise Norwegian Fjords photo album available in White Caps, Deck 4, Forward.

LAST CHANCE TO VISIT THE VISTA GALLERY

Don't miss your last chance to visit the Vista Gallery where you can admire beautiful artwork created by various celebrated artists and featuring some of your favorite Disney characters. From original canvas paintings to smaller print copies, the Vista Gallery offers the opportunity for you to take some of the magic home! Deck 4, Midship.

MAGICAL MAKEOVERS WITH GLITTER & GO

Fairy Godmothers-in-Training have boarded the Disney Magic Cruise Ship and are anxiously awaiting to give you a sparkly transformation with the Glitter & Go makeover experience. Guests ages 3-12 will have the opportunity to allow their inner Princess to shine through in time for dinner or for meeting the lovely Disney Princesses themselves! For more information, please see a Merchandise Host/Hostess at Mickey's Mainsail, Deck 4 Forward.

STYLISH TIMEPIECES BY PHILIP STEIN

Take the time to visit White Caps and discover the wide selection of luxury brand timepieces available including sophisticated designs from Philip Stein. With elegant pieces from the Signature Collection and the unique Sleep Bracelet designed to improve your quality of sleep, Philip Stein provides the wearer with a sense of style and serenity. White Caps, Deck 4, Forward.

IMPORTANT INFORMATION

Security Notice

All Guests (including Children) who wish to disembark or embark the ship are required to present their Key to the World card at the gangway. A photo ID is also required for those Guests who are 18 years of age or older. Guests under the age of 18 are required to have a parent, guardian or other responsible adult sign an authorization form at the Guest Service Desk if they wish to go ashore unaccompanied or with any adult from another stateroom.

Sunscreen/Insect Repellent Advisory

Use sunscreen first and protect against mosquito bites and related illnesses by applying insect repellent on top of sunscreen when going ashore. Insect repellent is available for purchase in White Caps.

Verandah Safety

Please do not leave any combustible materials on your balcony when not present in your stateroom for safety reasons.

Inclement Weather

For the safety of all Guests, outdoor events may be changed due to unforeseen weather conditions.

Corridor Quiet Hours

As a courtesy to all our Guests, please recognize quiet hallway hours from 10:00 p.m. til 8:00 a.m.

Environmental Message

With Disney's commitment to the Environment please refrain from throwing anything over the Ship's side. Thank you.

No Reserved Seats Policy

As a courtesy to all Guests we kindly advise that the saving of seats is not permitted in the Walt Disney Theatre, and the saving of the sun loungers is not permitted on Deck 9 and 10. Items left unattended will be returned to lost and found at Guest Services, Deck 3, Midship.

Sunbathing

Topless sunbathing is not allowed. Swimsuit tops must be worn at all times. Thong-style bottoms are not permitted.

Smoking

For the comfort of our guests, the following areas are designated as smoking areas:

- Deck 10 Forward, Starboard Side
- Deck 9, Forward, Starboard Side at Quiet Cove
- Deck 4, Starboard Side from 6:00 p.m. to 6:00 a.m. only (all of Deck 4 is non-smoking from 6:00 a.m. to 6:00 p.m.)

Smoking is prohibited inside all guest staterooms and on stateroom verandahs. Guests found smoking in their staterooms or on their verandahs will be charged a \$250 stateroom recovery fee.

Walt Disney Theatre





Theatrical performances may use artificial fog, strobe lights, pyrotechnics and other special effects. For the safety of our performers and the comfort of those around you, the use of any photography or video recording device or any electronic equipment is prohibited.

Cold and Flu Reminder

Please wash hands frequently and thoroughly, particularly before meals. Contact the Health Center by dialing 7-1923, should anyone in your party become ill.

Morning	8:30	8:45	9:00	9:15	9:30	9:45	10:00	10:15	10:30	10:45	11:00	11:15	11:30	11:45	12:00	12:15	12:30	12:45	1:00	1:15	1:30	
FUNNEL VISION	Lilo & Stitch (PG) Funnel Vision						Finding Nemo (G) Funnel Vision						Frozen (PG) Funnel Vision									
BUENA VISTA THEATRE	Cinderella (2015) (PG) Open Captioning Duration: 1 Hour 52 Minutes						Dover: White Cliffs and a Fascinating History						Avengers: Age of Ultron (PG-13) DOLBY 3D Duration: 2 Hours 22 Minutes									
CHARACTERS	Captain America Preludes						Cinderella Lobby Atrium (P)						Character Dance Party Lobby Atrium									
	Rapunzel Lobby Atrium (P)																					
FUN FOR ALL AGES	Disney Junior D Lounge		Disney Trivia Promenade Lounge		Ping Pong Tournament Wide World of Sports Deck		Animation: Stitch Promenade Lounge		Bingo Pre Sales		Could Go Jackpot BINGO Fathoms		Mainstage Q&A (12+) O'Gills				Disney Vacation Club D Lounge - Final Group Preview		Q&A with Michelle Mallardi Fathoms			
	Walk a Mile Preludes				Become Iron Man! Disney's Oceaneer Club		Movie Special: Inside Out (PG) WALT DISNEY THEATRE		Dover: White Cliffs and a Fascinating History Buena Vista Theatre				Captain's Signing White Caps				Crafts: Memory Pages Promenade Lounge					
ADULTS	Friends of Bill W. Keys		Art of The Theme Show Tour Palo			Crafts: Memory Pages O'Gills Pub			Anyone Can Cook D Lounge - Apple Strudel			Napkin Folding D Lounge				Singles' Lunch Lumiere's		Veteran's Gathering O'Gills Pub		Movie Quotes Trivia O'Gills Pub		
VIBE 14-17 YEARS OLD										Youth Activities Open House			Coffee Break		GOTCHA		Game Challenge					
EDGE 11-14 YEARS OLD							Youth Activities Open House			Animation Antics			Disney Scene It				Ninja					
OCEANEER LAB 3-12 YEARS OLD							Lights, Camera, Improv!			GAGA Ball					Piston Cup Challenge							
OCEANEER CLUB 3-12 YEARS OLD										Sports Deck Fun												
							Youth Activities Open House			Mouseketeer Training					5,4,3,2,1, Blast Off							
							Become Iron Man!															

Afternoon	1:45	2:00	2:15	2:30	2:45	3:00	3:15	3:30	3:45	4:00	4:15	4:30	4:45	5:00	5:15	5:30	5:45	6:00	6:15	6:30	6:45		
FUNNEL VISION						Teen Beach - 2 - (TV-G) Funnel Vision					Peter Pan (G) Funnel Vision										Bolt (PG) Funnel Vision		
BUENA VISTA THEATRE						Inside Out (PG) DOLBY 3D Duration: 1 Hour 42 Minutes										Tomorrowland (PG) Duration: 2 Hours 10 Minutes							
CHARACTERS						Pluto DK4 Mid (S)		Stitch Lobby Atrium (P)		Goofy DK4 Mid (S)		Donald Lobby Atrium (P)										Daisy Lobby Atrium (P)	
FUN FOR ALL AGES	 The Comedy and Percussion of JUNK Walt Disney Theatre		Steering Committee Hide & Seek D Lounge		Bingo Pre-Sales Fathoms		Talent Show Rehearsals D Lounge		FINAL Jackpot BINGO Fathoms		Live Music with Duo Azucar Promenade Lounge		 Walt Disney Theatre										
	Towel Folding D Lounge		Disney Tunes Trivia Promenade Lounge		Dance Class: Samba Fathoms		Game Show: The Disney Wheel Promenade Lounge		Toddler Time Promenade Lounge		Live Piano With Joe Creamer Lobby Atrium												
ADULTS	Theme Parks O'Gills Pub		Art of The Theme Show Tour Palo		Shuffleboard Tournament Promenade Deck, Port Side		Animation: Stitch O'Gills Pub		Singles' Mingle Cove Cafe		Club 18*21: 2000's Music Challenge O'Gills Pub												
VIBE 14-17 YEARS OLD	Game Challenge		Ice Cream Social		Gender Wars		Ninja		Disney Fantasia: Music Evolved		Youth Activities Open House												
EDGE 11-14 YEARS OLD	Marshmallow Olympics		Ice Cream Social		Brains and Brawns		Disney Infinity		Trivia Time										Game Challenge				
OCEANEER LAB 3-12 YEARS OLD	Youth Activities Open House										Friendship Rocks Prep		Friendship Rocks						Dinner				
						Anyone Can Cook																	
OCEANEER CLUB 3-12 YEARS OLD	Dress Up Fun		Story Time with Belle		Craft Corner																		

Evening	7:00	7:15	7:30	7:45	8:00	8:15	8:30	8:45	9:00	9:15	9:30	9:45	10:00	10:15	10:30	10:45	11:00	11:15	11:30	11:45	12:00							
FUNNEL VISION	The Incredibles (PG) Funnel Vision												Bedtime Stories (PG) Funnel Vision															
BUENA VISTA THEATRE					Tomorrowland (PG) Duration: 2 Hours 10 Minutes								Inside Out (PG) Duration: 1 Hour 42 Minutes															
CHARACTERS					Minnie <small>Lobby Atrium (P)</small>																							
					Mickey <small>Lobby Atrium (P)</small>																							
FUN FOR ALL AGES					 <small>D Lounge</small>				 <small>AN ENCHANTED CLASSIC Walt Disney Theatre</small>								 <small>Lobby Atrium</small>				 <small>D Lounge</small>							
					Ballroom Dancing <small>Fathoms</small>								Live Music with Duo Azucar <small>Promenade Lounge</small>								Live Music with Duo Azucar <small>Promenade Lounge</small>							
ADULTS	Live Irish Music <small>O'Gills Pub</small>		Brainteasers Trivia <small>O'Gills Pub</small>		Live Irish Music <small>O'Gills Pub</small>		DJ Matt <small>Fathoms</small>						Club 18*21: <small>Farewell Fathoms</small>		Cruise Staff <small>Farewell Fathoms</small>		DJ Matt <small>Fathoms</small>		Live Irish Music <small>O'Gills Pub</small>									
			Clara Oman: Tribute to Frank Sinatra <small>Keys</small>												Team Trivia <small>O'Gills Pub</small>													
VIBE 14-17 YEARS OLD	Open House 🍷		Smoothie Hour								Pump It Up				Zombified Premiere				Final Farewell Slideshow									
EDGE 11-14 YEARS OLD	Game Challenge		Youth Activities Open House 🍷						Craft Corner				How Well Do You Know Your Counselor?				Final Farewell Slideshow											
OCEANEER LAB 3-12 YEARS OLD			Anyone Can Cook 🧑🍳								Final Farewell 🧑🍳		Game Challenge		Super Sloppy Science 🧑🍳													
OCEANEER CLUB 3-12 YEARS OLD					Carnival Extravaganza								Talent Show				Glow Jam				Wii Challenge							

Symbol for activities that will be repeated during the cruise



FOLD

Fold along the dotted lines and take me with you so you don't miss any of the fun!

FOLD

IN THE SPOTLIGHT SERIES
SOAVE IT! SERIES

JUMP UP! SERIES
CREATE & INSPIRE SERIES

OPEN HOUSE

CLUBHOUSE SERIES
STORYBOOK SERIES

THURSDAY, JULY 9, 2015 - DAY AT SEA

BUENA VISTA THEATRE

Deck 5, Aft

Open Captioning DOLBY 3D DOLBY 3D



CINDERELLA Duration: 1 hr 52 mins Rating: PG	PIRATES OF THE CARIBBEAN: ON STRANGER TIDES Duration: 2 hrs 22 mins Rating: PG-13	INSIDE OUT Duration: 1 hr 42 mins Rating: PG	TOMORROWLAND Duration: 2 hrs 10 mins Rating: PG	INSIDE OUT Duration: 1 hr 42 mins Rating: PG
---	--	---	--	---

Character Appearances

CAPTAIN AMERICA

Preludes - 9:15 am

RAPUNZEL

Lobby Atrium (P) - 9:45 am

CINDERELLA

Lobby Atrium (P) - 10:15 am

CHARACTER DANCE PARTY

Lobby Atrium - 12:15 pm

JIMINY CRICKET

Lobby Atrium (P) - 3:00 pm

PLUTO

DK4 Mid (S) - 3:15 pm

PINOCCHIO

Lobby Atrium (P) - 3:30 pm

CHIP & DALE

DK4 Mid (S) - 3:45 pm

STITCH

Lobby Atrium (P) - 4:00 pm

GOOFLY

DK4 Mid (S) - 4:15 pm

CAPTAIN HOOK & MR SMEE

Lobby Atrium (P) - 4:30 pm

DONALD DUCK

Lobby Atrium (P) - 5:15 pm

DAISY DUCK

Lobby Atrium (P) - 6:00 pm

MINNIE MOUSE

Lobby Atrium (P) - 7:45 pm

MICKEY MOUSE

Lobby Atrium (P) - 8:15 pm

TIL WE MEET AGAIN

Lobby Atrium - 10:15 pm



(P) - Portside, (S) - Starboard Side

Don't forget your Camera to capture those Magical Moments!

Check here each day for Character appearances.

For detailed Character appearance information

see the Character Information Board in the Lobby Atrium.

Meet-and-Greets will be advertised for the length of time the line will be open. To avoid disappointment, please meet at start time of appearances.

YOUTH ACTIVITIES THEMED EXPERIENCES

CLUBHOUSE SERIES
focuses on movement and features content which appeals to younger children.

STORYBOOK SERIES
is designed with a strong connection to the Disney classic stories.

JUMP UP! SERIES
includes large group games & movement-oriented activities.

CREATE & INVENT SERIES
will have a tactile focus allowing children to create and admire their work.

IN THE SPOTLIGHT SERIES
focuses on children's stage presence with lots of activities and enthusiasm.

SOLVE IT! SERIES
are less active, but will challenge children with problem/solutions-based activities.

YOUTH ACTIVITIES OPEN HOUSE

Activities for families, adults and children of all ages to enjoy together.

SHIP DIRECTORY

YOUTH ACTIVITIES

DISNEY'S OCEANEER CLUB	DECK 5, MID	9:00 AM - 12:00 AM
DISNEY'S OCEANEER LAB	DECK 5, MID	9:00 AM - 12:00 AM
EDGE	DECK 2, MID	10:00 AM - 12:00 AM
IT'S A SMALL WORLD NURSERY	DECK 5, AFT	9:00 AM - 11:00 PM
VIBE	DECK 10, MID	10:30 AM - 1:00 AM

POOLS

*Children under 12 years of age must have adult supervision in all pools.

AQUADUNK	DECK 10, MID	10:00 AM - 11:45 AM
		12:05 PM - 8:00 PM
AQUALAB	DECK 9, AFT	9:00 AM - 8:00 PM
GOOFLY'S POOL	DECK 9, MID	9:00 AM - 8:00 PM
NEPHEWS' SPLASH ZONE	DECK 9, AFT	9:00 AM - 6:00 PM
QUIET COVE POOL (18+)	DECK 9, FWD	8:00 AM - 10:00 PM
TWIST 'N' SPOUT	DECK 9, AFT	10:00 AM - 8:00 PM

Complimentary pool vests are available for children to use in the pools onboard. They are located on the pool deck.

RECREATION

PORT ADVENTURES DESK	DECK 3, MID	11:00 AM - 1:30 PM
SENSES FITNESS CENTER (18+)	DECK 9, FWD	6:00 AM - 10:00 PM
WIDE WORLD OF SPORTS DECK	DECK 10, FWD	24 HOURS

GENERAL INFORMATION

BUENA VISTA THEATRE	DECK 5, AFT	SHOWTIMES
DISNEY VACATION CLUB DESK	DECK 4, MID	9:00 AM - 11:30 AM
		2:30 PM - 4:30 PM
		6:00 PM - 10:00 PM
ONBOARD SALES DESK	DECK 4, MID	10:00 AM - 12:00 PM
		3:30 PM - 6:00 PM
		7:30 PM - 10:00 PM
FUNNEL VISION	DECK 9, MID	SHOWTIMES
GUEST SERVICES	DECK 3, MID	24 HOURS
HAIR BRAIDING	DECK 9, MID	10:00 AM - 12:00 PM
		1:00 PM - 7:00 PM
MEDICAL HEALTH CENTER	DECK 1, FWD	9:30 AM - 11:00 AM
		4:30 PM - 7:00 PM
PORT & SHOPPING DESK	DECK 3, MID	7:00 PM - 8:30 PM
PRELUDES	DECK 4, FWD	5:30 PM - 9:00 PM
QUARTER MASTERS (ARCADE)	DECK 9, MID	24 HOURS
SENSES SPA AND SALON	DECK 9, FWD	8:00 AM - 10:00 PM
SHUTTERS PHOTO GALLERY	DECK 4, AFT	10:00 AM - 11:00 PM
WALT DISNEY THEATRE	DECK 4, FWD	SHOWTIMES

SHOPPING

ANNA & ELSA'S BOUTIQUE	DECK 10, MID	9:00 AM - 9:00 PM
MICKEY'S MAINSAIL	DECK 4, FWD	9:30 AM - 11:00 PM
QUACKS	DECK 9, MID	
SEA TREASURES	DECK 3, FWD	9:30 AM - 11:00 PM
VISTA GALLERY	DECK 4, MID	11:00 AM - 2:00 PM
WHITE CAPS	DECK 4, FWD	9:30 AM - 11:00 PM

DINNER MENU

Animator's Palate: 'Til We Meet Again
Carioca's: 'Til We Meet Again
Lumiere's: 'Til We Meet Again

DRINK OF THE DAY

Bay Breeze (Alcoholic)
Parrot Song (Non-Alcoholic)

WEATHER FORECAST

Today: Overcast
High: 60°F/16°C
Tomorrow: Sunny
High: 66°F/19°C

Evening Attire: Cruise Casual

DINING & LOUNGES

BREAKFAST

CABANAS	DECK 9, AFT	7:30 AM - 11:00 AM
DAISY'S DE LITES	DECK 9, AFT	7:00 AM - 9:00 AM
LUMIERE'S	DECK 3, MID	8:30 AM - 10:00 AM

LUNCH

CABANAS	DECK 9, AFT	11:45 AM - 2:00 PM
DAISY'S DE LITES	DECK 9, AFT	11:00 AM - 6:00 PM
LUMIERE'S	DECK 3, MID	12:00 PM - 1:30 PM
PALO (BRUNCH)	DECK 10, AFT	10:00 AM - 12:30 PM
PETE'S BOILER BITES	DECK 9, AFT	11:00 AM - 6:00 PM
PINOCCHIO'S PIZZERIA	DECK 9, MID	11:00 AM - 6:00 PM

DINNER

ANIMATOR'S PALATE	DECK 4, AFT	6:00 PM & 8:30 PM
CARIOCA'S	DECK 3, AFT	6:00 PM & 8:30 PM
LUMIERE'S	DECK 3, MID	6:00 PM & 8:30 PM
PALO (FOR RESERVATIONS CALL 7-6843)	DECK 10, AFT	6:00 PM - 8:30 PM
PETE'S BOILER BITES	DECK 9, AFT	6:00 PM - 10:00 PM

LATE NIGHT SNACKS

O'GILLS PUB	DECK 3, FWD	10:45 PM - 11:45 PM
PINOCCHIO'S PIZZERIA	DECK 9, MID	9:30 PM - 12:00 AM
PROMENADE LOUNGE	DECK 3, AFT	10:45 PM - 11:45 PM

ADDED FEATURES

EYE SCREAM	DECK 9, AFT	11:00 AM - 11:00 PM
BEVERAGE STATION	DECK 9, AFT	24 HOURS
ROOM SERVICE	DIAL 7-4330	CLOSES AT 1:00 AM

ENTERTAINMENT - LOUNGES - BARS

Adults must be 21 and older to consume alcoholic beverages.

AFTER HOURS	DECK 3, FWD	(AFTER 9:00 PM. ADULTS ONLY)
COVE CAFE (18+)	DECK 9, MID	6:30 AM - 12:00 AM
D LOUNGE	DECK 4, MID	SHOWTIMES
FATHOMS (18+)	DECK 3, FWD	7:00 PM - 2:00 AM
FROZONE TREATS	DECK 9, AFT	10:00 AM - 6:00 PM
INTERNET CAFE	DECK 3, AFT	24 HOURS
KEYS (18+)	DECK 3, FWD	6:30 PM - 12:30 AM
O'GILLS PUB (18+)	DECK 3, FWD	5:00 PM - 12:30 AM
PINOCCHIO'S PIZZERIA	DECK 9, MID	9:00 AM - 12:00 AM
PRELUDES	DECK 4, FWD	5:30 PM - 9:00 PM
PROMENADE LOUNGE	DECK 3, AFT	8:00 AM - 12:00 AM
SIGNALS (18+)	DECK 9, FWD	9:30 AM - 10:00 PM

Public Health Advisory: Consuming raw or undercooked meats, poultry, seafood, shellfish, or eggs may increase your risk for foodborne illness, especially if you have certain medical condition.

IMPORTANT NUMBERS

Fire/Security: 7-3001
Medical EMERGENCY: 7-3000
Health Center: 7-1923