

# PERSONAL NAVIGATOR

FRIDAY, JULY 3, 2015



Sunrise: 4:04 am Sunset: 11:39 pm  
Evening Attire: Cruise Casual

Today: Partly Cloudy High: 50°F/10°C  
Tomorrow: Partly Cloudy High: 62°F/17°C

DAY AT SEA

## TWICE CHARMED

AN ORIGINAL TWIST ON THE CINDERELLA STORY

STEP BACK IN TIME TO EXPERIENCE THE STORY OF CINDERELLA IN A MAGICAL NEW WAY. ENJOY THIS MAGNIFICENT MUSICAL PRODUCTION WITH YOUR FAVORITE CHARACTERS - AND A FEW NEW ONES!

WALT DISNEY THEATRE

Deck 4, Forward

6:30 pm & 8:45 pm

As a courtesy to all Guests, we kindly advise that the saving of seats is **not** permitted in the Walt Disney Theatre.



Assistance available at the entrance to the Walt Disney Theatre 30 minutes prior to show time.



## Disney MAGIC Fun Facts

Tonnage: 84,000

Length Overall: 984 Feet

Ship's Registry: The Bahamas

### Important Dates

Keel Laid: October 31, 1996

Launch Date: April 12, 1997

Inaugural Cruise: July 30, 1998

• The Magic was built by a process called Jumboisation (in 2 separate sections) in Italy at the Fincantieri Maghera Shipyard (stern) and the Fincantieri Ancona Shipyard (bow). The joint of the ship is just in front of Lumiere's.

• The anchor of the Disney Magic weighs 28,200 lbs (12,802.8kg) - the same weight as three elephants.

• Over 50 nationalities make up the 960 Crew Members on board.

• Sorcerer Mickey stands proudly 10 ft tall on the bow of the ship. There are other characters in the artwork around him.

• Goofy hangs 20 ft tall, painting the finishing touches on the stern.



### FAMILY VARIETY ACT

Featuring the Acrobatics and Music of Donovan and Rebecca in this fun, family show.

Walt Disney Theatre,  
Deck 4, Forward  
1:45 pm  
(Doors open at 1:30 pm)

## Don't Miss:

**Anyone Can Cook - Lobster Ravioli (18+)**

*D Lounge, Deck 4, Midship - 10:30 am*

From our galley to yours. Join our chefs as they show you how to prepare delicious dishes.

Today's Menu - Lobster Ravioli

**Reykjavik: The World's Northernmost Capital City**

*Buena Vista Theatre, Deck 5, Aft - 10:45 am*

Reykjavik's long history is full of tales of struggle, survival and accomplishment. Home to the world's oldest functioning parliament and a key strategic asset in World War II, Reykjavik's role in world politics remains of central importance. Iceland's capital city was a scene of protest to NATO admission after WWII, host city to the 1986 superpower summit that contributed to the end of the Cold War, and the epicenter of Iceland's financial crisis in 2008. Join Historian Jeffrey Morton for a look at Reykjavik's past and present role in global affairs. (This will be replayed on channel 26-8)

**Who Wants to be a Mouseketeer?**

*D Lounge, Deck 4, Midship - 7:45 pm & 10:00 pm*

Your chance to get into the "hot seat" and win limited edition prizes. Or, play along as part of our live studio audience.

Disney Cruise Line

PORT ADVENTURES

Stop by the Port Adventures Desk, located on Deck 3, Midship, where our friendly team will assist you to plan your adventure to our ports of call!

### TIME ZONE CHANGE

Remember to turn your clocks **BACK 1 HOUR** upon retiring on **FRIDAY** evening, or first thing **SATURDAY** morning.

## DINNER MENU

Animator's Palate : Prince & Princess  
Carioca's : Prince & Princess  
Lumiere's : Prince & Princess

## DRINK OF THE DAY

Coco Bali (Non-Alcoholic)  
Yellow Bird (Alcoholic)

### IMPORTANT NUMBERS

Fire/Security: 7-3001  
Medical Emergency: 7-3000  
Health Center: 7-1923



# ADULT ACTIVITY HIGHLIGHTS

## SENSES SPA FITNESS CLASSES & SEMINARS

*Sunrise Stretch* - Senses Spa Fitness Center - 7:00 am  
*Fab Abs* - Senses Spa Fitness Center - 7:30 am  
*Body Sculpt Boot Camp* (Nom. Fee) - Senses Spa & Salon - 8:00 am  
*Group Cycling* (Sign-Up Required) - Senses Spa Fitness Center - 9:00 am  
*Introduction to Acupuncture* - Senses Spa & Salon - 10:00 am  
*Ultimate Hair Cut Seminar* - Senses Spa & Salon - 10:30 am  
*Detox for Health & Weight Loss* - Senses Spa & Salon - 11:00 am  
*Pamper Party* - Senses Spa & Salon - 12:00 pm  
*Acupuncture Pain Relief* - Senses Spa Fitness Center - 2:00 pm  
*Good Feet: Relieving Back Pain* - Senses Spa & Salon - 3:00 pm  
*Yoga* (Sign-Up Required) - Senses Spa & Salon - 5:15 pm



## TASTING CLASSES

*Champagne Tasting* (18+) - Keys - 12:00 pm; Lumiere's - 3:00 pm  
*Italian Liquor Tasting* (18+) - Cove Cafe - 10:30 pm  
 Please make reservations for tastings at Guest Services for a nominal fee. Guests 18 to 20, whose parent or guardian has completed a beverage consent form, may attend with their parent or guardian.

## CLUB 18\*21: LUNCH

*Lumiere's, Deck 3, Midship - 12:00 pm*  
 Get to know your fellow 18\*21 Guests over a spot of lunch.

## CLUB 18\*21: ICE CREAM SOCIAL

*Eye Scream, Deck 9, Aft - 5:15 pm*  
 Join your fellow 18\*21 Guests for some evening ice cream.

## CLUB 18\*21: MIXER

*Fathoms, Deck 3, Forward - 10:15 pm*  
 Come join fellow cruisers your own age at our exclusive Club 18\*21 event.

## DISNEY INNOVATIONS: ANIMATION

*O'Gills Pub, Deck 3, Forward - 1:45 pm*  
 Join us for our presentation showing the "Top 10" greatest innovations that the Walt Disney Company has introduced to the field of Animation.



## ULTIMATE DISNEY TRIVIA

*O'Gills Pub, Deck 3, Forward - 2:45 pm*  
 Think you know all there is to know about Disney? Come test your knowledge at ultimate Disney trivia for the Adults.



# FUN FOR ALL AGES HIGHLIGHTS

## PHOTO QUIZ - ARTWORK

Stop by the Port Adventures Desk, Deck 3 Midship, to pick up the second of our 4 photo challenges of the cruise. Complete at your own leisure but please return the form before 10:00 p.m. tonight. The winner will be announced during tomorrow's morning announcement.



## WAKE UP WITH DISNEY JUNIOR

*D Lounge, Deck 4, Midship - 8:30 am*  
 What happens when you experience unlimited fun with your favorite Disney Junior shows? You get an exciting dance party designed especially for preschoolers ages seven and under.

## DOUBLE UP JACKPOT BINGO

*Bingo Pre-Sales start at 10:30 am*  
*Promenade Lounge, Deck 3, Aft - 10:45 am*  
 Special double up session: All electronic cards purchased will be doubled! The snowball jackpot continues to grow and could be won today! Pre-Sales start 15 minutes prior to the game.



## JACK-JACK'S INCREDIBLE DIAPER DASH

*Lobby Atrium, Deck 3, Midship - 11:30 am*  
 Calling all baby cruisers! It's time to take to the mat to see who's the fastest crawler of the seven seas! Register your baby 15 minutes prior to the big race.



## DISNEY VACATION CLUB GROUP PREVIEW

*D Lounge, Deck 4, Midship - 12:15 pm & 4:30 pm*  
 Want to learn more about taking magical vacations year after year? Please see a Disney Vacation Club representative on Deck 4, Midship, or call 7-2805 from your stateroom phone for more information about our interactive group presentation.



## PORT & SHOPPING TALK

*Fathoms, Deck 3, Forward - 1:00 pm*  
 Join your Port and Shopping Guide to learn about the incredible shopping ashore this cruise!

## CRAFTS: 4TH OF JULY CRAFTS

*Promenade Lounge, Deck 3, Aft - 1:00 pm*  
 Join your cruise staff for some 4th July crafts.

## DANCE CLASS: SLOW WALTZ

*Fathoms, Deck 3, Forward - 2:30 pm*  
 Join our professional dance instructors as they teach you how to Slow Waltz.

## MEGA RAFFLE JACKPOT BINGO

*Bingo Pre-Sales start at 3:30 pm*  
*Fathoms, Deck 3, Forward - 3:45 pm*  
 Join your Cruise Staff for family Bingo fun! Four cash prize games and great raffle prize packs to be won. Don't miss out on the fun! Pre-Sales start 15 minutes prior to game.



## JEWISH SABBATH

*Cabanas, Deck 9, Aft - 5:15 pm*  
 A quiet space is reserved for those wishing to conduct their own service.

## BALLROOM DANCING

*Fathoms, Deck 3, Forward - 5:15 pm*  
 The dance floor is open for those wanting to enjoy an elegant evening of ballroom dancing.

## CLUB D DANCE PARTY

*D Lounge, Deck 4, Midship - 10:45 pm*  
 Join your snazzy Cruise Staff as we turn D-Lounge into an electrifying family nightclub. Club D, where everyone is a V.I.P.!



# YOUTH ACTIVITIES HIGHLIGHTS

## DINE & PLAY

As a convenience for families dining at 8:30 p.m., our Youth Activities Counselors will be available at 9:30 p.m. at the entrance of Lumiere's, Carioca's and Animator's Palate to bring registered children to join the fun in Disney's Oceaneer Club and Disney's Oceaneer Lab.



**Deck 5, Aft (7-5864)**

**9:00 am - 11:00 pm**

Infants and Toddlers can enjoy toys and activities at It's a small world nursery. Reservations are first come, first served so please stop by!



**Deck 5, Midship (7-1439)**  
(3-12 years old)

**9:00 am - 12:00 am**

## MARVEL AVENGERS ACADEMY

**11:00 am**

Young Heroes Assemble! S.H.I.E.L.D and The Avengers need your help in defeating the evil Red Skull and his dreaded Cabal.

## TOY STORY BOOT CAMP

**7:30 pm**

Join Corporal Green in our own version of boot camp as we learn how to have fun - The Toy Story way!



**Deck 5, Midship (7-1445)**  
(3-12 years old)

**9:00 am - 12:00 am**

## PISTON CUP CHALLENGE

**10:30 am**

It's Dinoco time and you're part of the pit crew! Design your own race car and see if you've got what it takes to end up in the winner's circle!

## GOOFY FILES

**7:30 pm**

This fascinating activity takes you into the invisible world of forensics where you will discover different ways to identify the suspect of a crime.



**Deck 2, Midship (7-5816)**  
(11-14 years old)

**10:00 am - 1:00 am**

## GOOFY'S WORLD RECORDS

**11:15 am**

Compete in the Goofy-est games ever! Goofy and his pals have created a variety of games and contests for a wild time.

## ARCADE NIGHT

**12:15 am**

The arcade is ours! Come and have some exclusive time in the arcade with some of your new friends



**Deck 10, Midship (7- 18517)**  
(14-17 years old)

**11:00 am - 2:00 am**

## GOTCHA

**12:00 pm**

You will try to eliminate your victim by various methods collecting points throughout the day, last person standing with the most points wins.

## ZOMBIFIED

**2:00 pm**

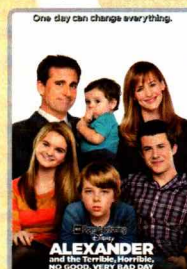
A big movie producer is looking for zombies to help him film the finale to his latest masterpiece, Zombified.

# BUENA VISTA THEATRE

Deck 5, Aft  
Today's Movies

Open Captioning

DOLBY.3D



**8:30 am**

Duration: 1 hr 21 mins

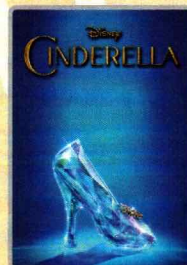
Rating: PG



**12:15 pm & 10:30 pm**

Duration: 2 hrs 22 mins

Rating: PG-13



**3:15 pm**

Duration: 1 hr 52 mins

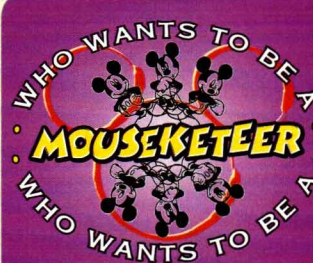
Rating: PG



**5:30 pm & 8:00 pm**

Duration: 2 hrs 10 mins

Rating: PG



## FAMILY GAME SHOW

Your chance to get into the world famous hot seat and win an exclusive prize in our version of the well known television game show.

**D Lounge,  
Deck 4, Midship,  
7:45 pm & 10:00 pm**



## ADULT VARIETY ACT

Back by popular demand! Join Hector Is Magic! as he entertains you in this adult exclusive show of close-up magic.

**Fathoms (18+),  
Deck 3, Forward  
10:30 pm**

## YOUTH ACTIVITIES OPEN HOUSE

Open House is an opportunity for all to come and participate in a variety of exciting activities and free time in the Oceaneer Club, Oceaneer Lab, it's a small world nursery, Vibe and Edge throughout the cruise. During these times secured programming will still be offered in the other venue for those looking to check their children into care.

Edge: 10:00 am - 11:00 am & 6:00 pm - 7:30 pm

Vibe: 10:30 am - 11:30 am & 7:30 pm - 9:00 pm

Disney's Oceaneer Club: 9:00 am - 10:30 am

Disney's Oceaneer Lab: 4:00 pm - 6:00 pm



# MORE TO ENJOY WHILE ONBOARD

## MORE MAGIC IN EUROPE

Set sail for Europe! Travel with Disney Cruise Line to the Mediterranean - a region that conjures up a romantic past. Home to some of the world's oldest civilizations, trade routes and cultures, this region offers a diverse blend of cities and cultures. Sail to such countries as Italy, France, Spain and Portugal. Begin your adventure today! Visit the Onboard Sales Desk for more information.

## DISNEY VACATION CLUB® GROUP PREVIEW

Want to learn more about taking magical vacations year after year? Please see a Disney Vacation Club representative on Deck 4, Midship, or call 7-2805 from your stateroom phone for more information about our interactive group presentation.

## PORT & SHOPPING INFORMATION

Join your Port and Shopping Guide, Gemma, today at 1:00 pm in Fathoms, Deck 3, Forward, for her not-to-be-missed live Port Shopping Talk. Stop by the Port & Shopping Desk, Deck 3, Midship between 7:30 pm and 8:30 pm with any Port Shopping Questions. Tune into Channel 26-6 for updated Port Shopping Information.

## Connect@Sea

We are now offering a NEW and improved Internet service to stay connected on your cruise like no other in the industry! Internet packages range from \$0.25 per MB - \$89.00 (1000 MB package). For more information contact your Connect@Sea Expert or Guest Services onboard. Possible service interruptions due to area configuration.

## CURRENCY EXCHANGE

Guests are advised that Disney Cruise Line is unable to exchange the Icelandic Krona onboard. Guests may be able to exchange this currency at currency exchange offices in our ports of call or at airport exchange centers. Major credit/debit cards are widely accepted throughout Iceland and many tourist locations will accept Euros, US dollars or both.

## CASH DECLARATION NOTICE

Guests going ashore in port with over 10,000 Euros (or cash equivalent in any other currency), are required to declare it to Customs upon arrival, or risk having it confiscated if stopped by local authorities.

Disney CRUISE LINE

## PORT ADVENTURES

Create the most memorable experiences during your Disney Cruise Line vacation with Port Adventures! During the Golden Circle Port Adventure in Reykjavik, travel scenic routes to the magnificent Gullfoss Waterfall and also the most active Geysir (Strokkur) which can spout a column of boiling water up to 60 feet high every few minutes.

Port Adventures Desk, Deck 3, Midship

## SHOPPING

### COLLECT YOUR DISNEY CRUISE MEMORIES IN A DISNEY CRUISE LINE PHOTO ALBUM

Store the many happy memories you've photographed while on your Disney cruise inside a 2015 Disney Cruise Line photo album and scrapbook, available in Mickey's Mainsail, Deck 4, Forward. Mickey's Mainsail is also where you'll find additional commemorative 2015 Disney Cruise Line souvenirs.

### STAY WARM WITH DISNEY CRUISE LINE MERCHANDISE

Brrrr! Bundle up from the cold with the cozy woven throw designed especially for the Disney Cruise Line sailings through the Norwegian fjords. Still not warm enough? In the onboard shops you'll also find matching Disney Cruise Line gloves, headband, and beanie. Or, if you want to channel the stars of Disney Frozen, check out the fun Anna and Elsa knit hats. Deck 4, Forward.

### MAGICAL MAKEOVERS WITH GLITTER & GO

Fairy Godmothers-in-Training have boarded the Disney Magic Cruise Ship and are anxiously awaiting to give you a sparkly transformation with the Glitter & Go makeover experience. Guests ages 3-12 will have the opportunity to allow their inner Princess to shine through in time for dinner or for meeting the lovely Disney Princesses themselves! For more information, please see a Merchandise Host/Hostess at Mickey's Mainsail, Deck 4 Forward.

### SOPHIA FIORI GUESS THE CARAT WEIGHT

Whoever guesses closest wins a Sophia Fiori midnight sapphire studs! Winners announced tonight at 7:45 p.m. Must be present to win. White Caps, Deck 4, Forward.

### STYLISH SUNGLASSES

From popular brands such as Prada and Burberry to Fossil and Guess, discover the variety of fashionable sunglasses available today at White Caps. Deck 4, Forward.

### DISNEY CRUISE LINE NORWEGIAN SOUVENIR

Head to the onboard shops on Deck 4, Forward, where you'll find commemorative apparel and souvenirs designed especially for the Disney Magic Cruise Ship's Norwegian sailing. Featuring this majestic ship as it sails through the beautiful fjords and special appearances by some of your friends from Disney Frozen, you're sure to discover something for the whole family!



## GO-SMILE

Your smile is the outward expression of your inner beauty. A beaming smile makes you look younger, more radiant and confident. Are you ready to Smile? Then try our advanced Go-Smile teeth whitening treatment. It's a safe and effective way to take your smile from dull to dazzling in just 30 minutes.

\$149 per person \$258 for couples

Deck 9, Forward - Phone: 7-1465



## Anna & Elsa's BOUTIQUE

At Anna & Elsa's Boutique, your dreams of snow in summer can come true, with the Disney Frozen Package.

Deck 10, Midship



## PHOTOBOOK

Create a personalized story book of your Disney Cruise. Please create your PhotoBook on a daily basis in Shutters, Deck 4, Aft. All orders need to be placed by 7:30 pm on the last night of the cruise.

*\*Terms and conditions apply. The PhotoBook is only available for purchase during this cruise.*

## IMPORTANT INFORMATION

### Security Notice

All Guests (including Children) who wish to disembark or embark the ship are required to present their Key to the World card at the gangway. A photo ID is also required for those Guests who are 18 years of age or older. Guests under the age of 18 are required to have a parent, guardian or other responsible adult sign an authorization form at the Guest Service Desk if they wish to go ashore unaccompanied or with any adult from another stateroom.

### Sunscreen/Insect Repellent Advisory

Use sunscreen first and protect against mosquito bites and related illnesses by applying insect repellent on top of sunscreen when going ashore. Insect repellent is available for purchase in White Caps.

### Verandah Safety

Please do not leave any combustible materials on your balcony when not present in your stateroom for safety reasons.

### Inclement Weather

For the safety of all Guests, outdoor events may be changed due to unforeseen weather conditions.

### Corridor Quiet Hours

As a courtesy to all our Guests, please recognize quiet hallway hours from 10:00 p.m. til 8:00 a.m.

### Environmental Message

With Disney's commitment to the Environment please refrain from throwing anything over the Ship's side. Thank you.

### No Reserved Seats Policy

As a courtesy to all Guests we kindly advise that the saving of seats is not permitted in the Walt Disney Theatre, and the saving of the sun loungers is not permitted on Deck 9 and 10. Items left unattended will be returned to lost and found at Guest Services, Deck 3, Midship.

### Sunbathing

Topless sunbathing is not allowed. Swimsuit tops must be worn at all times. Thong-style bottoms are not permitted.

### Smoking

For the comfort of our guests, the following areas are designated as smoking areas:

- Deck 10 Forward, Starboard Side
- Deck 9, Forward, Starboard Side at Quiet Cove
- Deck 4, Starboard Side from 6:00 p.m. to 6:00 a.m. only (all of Deck 4 is non-smoking from 6:00 a.m. to 6:00 p.m.)

Smoking is prohibited inside all guest staterooms and on stateroom verandahs. Guests found smoking in their staterooms or on their verandahs will be charged a \$250 stateroom recovery fee.

### Walt Disney Theatre

Theatrical performances may use artificial fog, strobe lights, pyrotechnics and other special effects. For the safety of our performers and the comfort of those around you, the use of any photography or video recording device or any electronic equipment is prohibited.

### Cold and Flu Reminder

Please wash hands frequently and thoroughly, particularly before meals. Contact the Health Center by dialing 7-1923, should anyone in your party become ill.



Morning	8:30	8:45	9:00	9:15	9:30	9:45	10:00	10:15	10:30	10:45	11:00	11:15	11:30	11:45	12:00	12:15	12:30	12:45	1:00	1:15	1:30
FUNNEL VISION	Sleeping Beauty (G) Funnel Vision						Cinderella (Classic) (G) Funnel Vision						WALL-E (G) Funnel Vision								
BUENA VISTA THEATRE	Alexander...Very Bad Day (PG)  Open Captioning Duration: 1 Hour 21 Minutes						Reykjavik The World's Northernmost Capital City						Avengers: Age of Ultron (PG-13)								
CHARACTERS	Captain America Preludes						Cinderella Lobby Atrium (P)						Goofy Lobby Atrium (P)						Chip & Dale Lobby Atrium (P)		
FUN FOR ALL AGES	Disney Junior D Lounge						Animation: Goofy Promenade Lounge						Disney Vacation Club D Lounge - Group Preview						Crafts: 4th of July Crafts Promenade Lounge		
	Walk A Mile Preludes						Shuffleboard Tournament Promenade Deck						Game Show: The Family Feud Promenade Lounge						Port & Shopping Talk Fathoms		
ADULTS	Friends of Bill W. Keys						Art of The Theme Show Tour Palo						Club 18*21: Lunch Lumiere's						Movie Quotes Trivia O'Gills Pub		
	Group Cycling (Sign-Up Required) Senses Spa Fitness Center						Introduction to Acupuncture Senses Spa & Salon						Singles' Lunch Lumiere's						Crafts: Origami Flowers O'Gills Pub		
VIBE 14-17 YEARS OLD							Youth Activities Open House						Coffee Break						GOTCHA		
EDGE 11-14 YEARS OLD							Youth Activities Open House						Goofy's World Records						Around the World in 7 days		
OCEANEER LAB 3-12 YEARS OLD							Animation Antics						Piston Cup Challenge						GAGA Ball		
OCEANEER CLUB 3-12 YEARS OLD							Youth Activities Open House						Marvel Avengers Academy						Craft Corner		
							The Royal Ball												Lunch		

Afternoon	1:45	2:00	2:15	2:30	2:45	3:00	3:15	3:30	3:45	4:00	4:15	4:30	4:45	5:00	5:15	5:30	5:45	6:00	6:15	6:30	6:45
FUNNEL VISION	Tangled (PG) Funnel Vision						Teen Beach - 2 - (TV-G) Funnel Vision						Mulan (G) Funnel Vision								
BUENA VISTA THEATRE							Cinderella (2015) (PG) Duration: 1 Hour 52 Minutes						Tomorrowland (PG) Duration: 2 Hours 10 Minutes								
CHARACTERS	Daisy Lobby Atrium (P)						Mickey Lobby Atrium (P)						Goofy Lobby Atrium (P)								
FUN FOR ALL AGES	The Acrobatics and Music of <b>DONOVAN &amp; REBECCA</b> Walt Disney Theatre						Dance Class: Slow Waltz Fathoms						Disney Tunes Trivia Promenade Lounge						Bingo Pre Sales		
	Toddler Time Promenade Lounge						Basketball Challenge Wide World of Sports Deck						Crafts: Origami Flowers Promenade Lounge						Disney Disco Promenade Lounge		
ADULTS	Animation O'Gills Pub						Ultimate Disney Trivia O'Gills Pub						Art of The Theme Show Tour Palo						Singles' Mingle Cove Cafe		
	Club 18*21: Ice Cream Social Eye Scream						Sports Trivia O'Gills Pub						Live Music with The Dreamers Promenade Lounge						Yoga (Sign-Up Required) Senses Spa & Salon		
VIBE 14-17 YEARS OLD	Zombified												Marshmallow Olympics						Games		
EDGE 11-14 YEARS OLD	Ninja						Brains and Brawns						Disney Fantasia: Music Evolved						Youth Activities Open House		
OCEANEER LAB 3-12 YEARS OLD							Anyone Can Cook						Youth Activities Open House						Wii Challenge		
OCEANEER CLUB 3-12 YEARS OLD	Become Iron Man!						Parachute Games						Play-Doh Fun						Dinner		

Evening	7:00	7:15	7:30	7:45	8:00	8:15	8:30	8:45	9:00	9:15	9:30	9:45	10:00	10:15	10:30	10:45	11:00	11:15	11:30	11:45	12:00
FUNNEL VISION	Bedknobs and Broomsticks (PG) Funnel Vision						Enchanted (PG) Funnel Vision						Avengers: Age of Ultron (PG-13)								
BUENA VISTA THEATRE							Tomorrowland (PG) Duration: 2 Hours 10 Minutes						Minnie & Daisy Lobby Atrium (P)								
CHARACTERS	Daisy Lobby Atrium (P)						Mickey & Minnie Lobby Atrium (P)						Mickey & Goofy Lobby Atrium (P)								
FUN FOR ALL AGES	Mousketeer D Lounge						Twice Charmed Walt Disney Theatre						Club D Dance Party D Lounge								
	Family Dance Party Promenade Lounge						Live Music with The Dreamers Promenade Lounge						Live Music with The Dreamers Promenade Lounge								
ADULTS	Live Irish Music with Girs O'Gills Pub						70's Music Trivia O'Gills Pub						DJ Matt Fathoms						Club 18*21 Fathoms		
	Live Piano with Clara Oman Keys						Live Piano With Joe Creamer Keys						Live Irish Music O'Gills Pub						Team Trivia O'Gills Pub		
VIBE 14-17 YEARS OLD	Smoothie Hour						Youth Activities Open House						Pump It Up						Bring It!		
EDGE 11-14 YEARS OLD	Open House						Disney Cruise Line Trivia						Scattergories						Gender Wars		
OCEANEER LAB 3-12 YEARS OLD	Goofy Files						Who Wants To Be A Mousketeer						Boys and Girls Chill								
OCEANEER CLUB 3-12 YEARS OLD	Toy Story Boot Camp						Craft Corner						Memory Wall						Boys and Girls Chill		
													Wii Challenge								

Symbol for activities that will be repeated during the cruise



FOLD

Fold along the dotted lines and take me with you so you don't miss any of the fun!

FOLD

IN THE SPOTLIGHT SERIES

★ SOLVE IT! SERIES

JUMP UP! SERIES

★ CREATE & INVENT SERIES

CLUBHOUSE SERIES

★ STORYBOOK SERIES



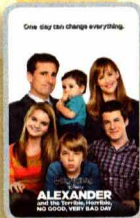
FRIDAY, JULY 3, 2015 - DAY AT SEA

# BUENA VISTA THEATRE

Deck 5, Aft

ac Open Captioning

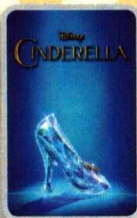
DOLBY 3D



8:30 am  
Duration:  
1 hr 21 mins  
Rating: PG



12:15 pm & 10:30 pm  
Duration:  
2 hrs 22 mins  
Rating: PG-13



3:15 pm  
Duration:  
1 hr 52 mins  
Rating: PG



5:30 pm & 8:00 pm  
Duration:  
2 hrs 10 mins  
Rating: PG

## Character Appearances

### CAPTAIN AMERICA

Preludes - 9:15 am

### RAPUNZEL

Lobby Atrium (P) - 9:45 am

### CINDERELLA

Lobby Atrium (P) - 10:15 am

### GOOFY

Lobby Atrium (P)  
12:15 pm & 5:30 pm

### PLUTO

Lobby Atrium (P)  
12:45 pm

### CHIP & DALE

Lobby Atrium (P)  
1:15 pm

### MINNIE MOUSE

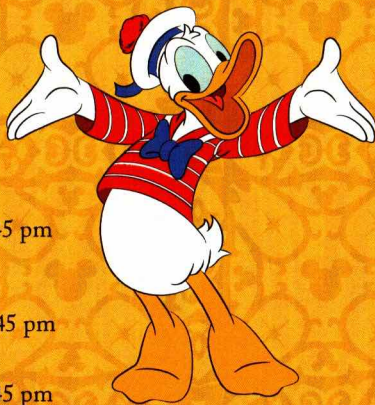
Lobby Atrium (P) - 1:45 pm

### DAISY DUCK

Lobby Atrium (P)  
2:15 pm, 5:00 pm & 7:45 pm

### DONALD DUCK

Lobby Atrium (P) - 2:45 pm



(P) - Portside, (S) - Starboard Side

Don't forget your Camera to capture those Magical Moments!

Check here each day for Character appearances.

For detailed Character appearance information  
see the Character Information Board in the Lobby Atrium.

Meet-and-Greets will be advertised for the length of time the line will be open. To avoid disappointment, please meet at start time of appearances.

## YOUTH ACTIVITIES THEMED EXPERIENCES

### CLUBHOUSE SERIES

focuses on movement and features content which appeals to younger children.

### STORYBOOK SERIES

is designed with a strong connection to the Disney classic stories.

### JUMP UP! SERIES

includes large group games & movement-oriented activities.

### CREATE & INVENT SERIES

will have a tactile focus allowing children to create and admire their work.

### IN THE SPOTLIGHT SERIES

focuses on children's stage presence with lots of activities and enthusiasm.

### SOLVE IT! SERIES

are less active, but will challenge children with problem/solutions-based activities.

### YOUTH ACTIVITIES OPEN HOUSE

Activities for families, adults and children of all ages to enjoy together.

## SHIP DIRECTORY

### YOUTH ACTIVITIES

DISNEY'S OCEANEER CLUB	DECK 5, MID	9:00 AM - 12:00 AM
DISNEY'S OCEANEER LAB	DECK 5, MID	9:00 AM - 12:00 AM
EDGE	DECK 2, MID	10:00 AM - 1:00 AM
IT'S A SMALL WORLD NURSERY	DECK 5, AFT	9:00 AM - 11:00 PM
VIBE	DECK 10, MID	11:00 AM - 2:00 AM

### POOLS

\*Children under 12 years of age must have adult supervision in all pools.

AQUADUNK	DECK 10, MID	10:00 AM - 11:45 AM
		12:05 PM - 8:00 PM
AQUALAB	DECK 9, AFT	9:00 AM - 8:00 PM
GOOFY'S POOL	DECK 9, MID	9:00 AM - 10:00 PM
NEPHEWS' SPLASH ZONE	DECK 9, AFT	9:00 AM - 6:00 PM
QUIET COVE POOL (18+)	DECK 9, FWD	8:00 AM - 10:00 PM
TWIST 'N' SPOUT	DECK 9, AFT	10:00 AM - 8:00 PM

Complimentary pool vests are available for children to use in the pools onboard.  
They are located on the pool deck.

### RECREATION

PORT ADVENTURES DESK	DECK 3, MID	9:00 AM - 5:00 PM
		7:00 PM - 8:30 PM
SENSES FITNESS CENTER (18+)	DECK 9, FWD	6:00 AM - 10:00 PM
WIDE WORLD OF SPORTS DECK	DECK 10, FWD	24 HOURS

### GENERAL INFORMATION

BUENA VISTA THEATRE	DECK 5, AFT	SHOWTIMES
DISNEY VACATION CLUB DESK	DECK 4, MID	9:00 AM - 11:30 AM
		2:30 PM - 4:30 PM
		5:30 PM - 10:00 PM

ONBOARD SALES DESK	DECK 4, MID	9:30 AM - 12:00 PM
		4:00 PM - 6:00 PM
		7:30 PM - 9:30 PM

FUNNEL VISION	DECK 9, MID	SHOWTIMES
GUEST SERVICES	DECK 3, MID	24 HOURS
HAIR BRAIDING	DECK 9, MID	10:00 AM - 12:00 PM
		1:00 PM - 6:00 PM
		7:00 PM - 9:00 PM

MEDICAL HEALTH CENTER	DECK 1, FWD	9:30 AM - 11:00 AM
		4:30 PM - 7:00 PM
PORT & SHOPPING DESK	DECK 3, MID	7:00 PM - 8:30 PM
PRELUDES	DECK 4, FWD	5:30 PM - 9:00 PM
QUARTER MASTERS (ARCADE)	DECK 9, MID	24 HOURS

SENSES SPA AND SALON	DECK 9, FWD	8:00 AM - 10:00 PM
SHUTTERS PHOTO GALLERY	DECK 4, AFT	10:00 AM - 10:00 PM
WALT DISNEY THEATRE	DECK 4, FWD	SHOWTIMES

### SHOPPING

ANNA & ELSA'S BOUTIQUE	DECK 10, MID	9:00 AM - 9:00 PM
MICKEY'S MAINSAIL	DECK 4, FWD	9:30 AM - 11:00 PM
QUACKS	DECK 9, MID	10:00 AM - 4:00 PM
SEA TREASURES	DECK 3, FWD	9:30 AM - 11:00 PM
VISTA GALLERY	DECK 4, MID	11:00 AM - 2:00 PM
		4:00 PM - 10:00 PM
WHITE CAPS	DECK 4, FWD	9:30 AM - 11:00 PM



## TIME ZONE CHANGE

Remember to turn your clocks **BACK 1 HOUR**  
upon retiring on **FRIDAY** evening,  
or first thing **SATURDAY** morning.

DINNER  
MENU

Animator's Palate : Prince & Princess  
Carioca's : Prince & Princess  
Lumiere's : Prince & Princess

DRINK  
OF THE DAY

Coco Bali (Non-Alcoholic)  
Yellow Bird (Alcoholic)  
Tomorrow: Partly Cloudy  
High: 62 F/17 C

WEATHER  
FORECAST

Today: Partly Cloudy  
High: 50 F/10 C  
Tomorrow: Partly Cloudy  
High: 62 F/17 C

Evening Attire: Cruise Casual

## DINING & LOUNGES

### BREAKFAST

CABANAS	DECK 9, AFT	7:30 AM - 10:45 AM
DAISY'S DE LITES	DECK 9, AFT	7:00 AM - 9:00 AM
LUMIERE'S	DECK 3, MID	8:30 AM - 10:00 AM

### LUNCH

CABANAS	DECK 9, AFT	11:45 AM - 2:00 PM
DAISY'S DE LITES	DECK 9, AFT	11:00 AM - 6:00 PM
LUMIERE'S	DECK 3, MID	12:00 PM - 1:30 PM
PALO (BRUNCH)	DECK 10, AFT	10:00 AM - 12:30 PM
PETE'S BOILER BITES	DECK 9, AFT	11:00 AM - 6:00 PM
PINOCCHIO'S PIZZERIA	DECK 9, MID	11:00 AM - 6:00 PM

### DINNER

ANIMATOR'S PALATE	DECK 4, AFT	6:00 PM & 8:30 PM
CABANAS TABLE SERVICE	DECK 9, AFT	6:30 PM - 8:30 PM
CARIOCA'S	DECK 3, AFT	6:00 PM & 8:30 PM
LUMIERE'S	DECK 3, MID	6:00 PM & 8:30 PM
PALO (FOR RESERVATIONS CALL 7-6843)	DECK 10, AFT	
PETE'S BOILER BITES	DECK 9, AFT	6:00 PM - 10:00 PM

### LATE NIGHT SNACKS

O'GILLS PUB	DECK 3, FWD	10:45 PM - 11:45 PM
PINOCCHIO'S PIZZERIA	DECK 9, MID	9:30 PM - 12:00 AM
PROMENADE LOUNGE	DECK 3, AFT	10:45 PM - 11:45 PM

### ADDED FEATURES

EYE SCREAM	DECK 9, AFT	11:00 AM - 11:00 PM
BEVERAGE STATION	DECK 9, AFT	24 HOURS
ROOM SERVICE	DIAL 7-4330	24 HOURS

## ENTERTAINMENT - LOUNGES - BARS

Adults must be 21 and older to consume alcoholic beverages.

AFTER HOURS	DECK 3, FWD	(AFTER 9:00 PM. ADULTS ONLY)
COVE CAFE (18+)	DECK 9, MID	6:30 AM - 12:00 AM
D LOUNGE	DECK 4, MID	SHOWTIMES
FATHOMS (18+)	DECK 3, FWD	7:00 PM - 2:00 AM
FROZONE TREATS	DECK 9, AFT	10:00 AM - 6:00 PM
INTERNET CAFE	DECK 3, AFT	24 HOURS
KEYS (18+)	DECK 3, FWD	6:30 PM - 12:30 AM
O'GILLS PUB (18+)	DECK 3, FWD	12:00 PM - 12:30 AM
PINOCCHIO'S PIZZERIA	DECK 9, MID	9:00 AM - 12:00 AM
PRELUDES	DECK 4, FWD	5:30 PM - 9:00 PM
PROMENADE LOUNGE	DECK 3, AFT	8:00 AM - 12:00 AM
SIGNALS (18+)	DECK 9, FWD	9:30 AM - 10:00 PM

Public Health Advisory: Consuming raw or undercooked meats, poultry, seafood, shellfish, or eggs may increase your risk for foodborne illness, especially if you have certain medical condition.

## IMPORTANT NUMBERS

Fire/Security: 7-3001  
Medical EMERGENCY: 7-3000  
Health Center: 7-1923