

PERSONAL NAVIGATOR



MONDAY, MAY 18, 2015

Sunrise: 6:10 am Sunset: 7:19 pm
 Evening Attire: Cruise Casual
 All Ashore: 8:30 am All Aboard: 3:45 pm

Today: Sunny High: 82°F/28°C
 Tomorrow: Sunny High: 80°F/27°C

COZUMEL, MEXICO

Disney WISHES

On the eve of their graduation, three best friends go on a magical journey down the wishing well. A host of Disney characters help them discover the connection between children who are becoming adults, and adults who stay in touch with being a kid at heart.



**WALT DISNEY THEATRE
 DECK 3 & 4, FORWARD
 6:15 pm & 8:30 pm**

As a courtesy to all Guests, we kindly advise that the saving of seats is not permitted in the Walt Disney Theatre.



Assistance available at the entrance to the Walt Disney Theatre 30 minutes prior to show time.

Cozumel Port Information

Cozumel, Mexico is an invigorating port of call on a Caribbean Cruise vacation. An island and a city off the eastern coast of Mexico's Yucatan Peninsula, Cozumel is known for some of the world's healthiest coral reefs and rarest natural recreation. This island in the Caribbean Sea is an extremely popular destination for scuba-diving and snorkeling enthusiasts.

The Mayans considered the site sacred to the Moon Goddess, Ixchel, and women would make regular pilgrimages there to pay tribute and to wish for fertility in return.

The arrival of the Spanish in 1518 brought disease and devastation, nearly wiping out the Mayans and leaving the island all but deserted by 1570. It was an outpost for pirates until 1848, when warfare in the Yucatan drove refugees to settle there. A boom in visitors to the island came after 1959, when the famed Jacques Cousteau publicized Cozumel's coral reefs as among the best in the world for scuba diving.

Today, Guests can let their imaginations take flight in the island the Mayans named Cozumel—the "Island of the Swallows"—so long ago.

DOCKING

The ship will dock at the Punta Langosta pier. The pier is located downtown, with walk off access right into the city of Cozumel.

FAMILY GAME SHOW

Bring the entire family and test your Disney knowledge in the high-tech interactive game show, Family Fusion.

D Lounge,
 Deck 4, Midship,
 7:30 pm & 10:15 pm

Don't Miss:

Chip-It Golf (12+)

Lobby Atrium, Deck 3, Midship - 2:30 pm
 It's par for the course for our Guests 12 and older to compete on our special "greens" in this fun tournament.

Disney Animation: Cartoon Physics

D Lounge, Deck 4, Midship - 3:15 pm
 Go behind the scenes at Walt Disney Animation Studios and see how flat drawings and pencil lines can come to life through basic techniques such as "Stretch and Squash," and create your own "bouncing ball" animation exercise in this entertaining and fun enrichment program.

Officer Pin Trading

Preludes, Deck 3, Forward - 7:15 pm
 Come trade pins with the Officers of the Disney Fantasy.

80's/90's Remix with Club DJ J Alan (18+)

The Tube, Deck 4, Aft - 11:15 pm
 Join Club DJ J Alan, as he spins the tunes and remix the 80's & 90's!



IMPORTANT INFORMATION

Please check your tour tickets for meeting times and locations. Visit the Port Adventures desk, Deck 5, Midship for any questions.

DINNER MENU

Animator's Palate : Pacific Rim Cuisine
 Enchanted Garden : Continental Market Cuisine
 Royal Court : French Cuisine

DRINK OF THE DAY

Lava Smoothie (Non-Alcoholic)
 Yellow Bird (Alcoholic)

IMPORTANT NUMBERS

Fire/Security: 7-3001
 Medical Emergency: 7-3000
 Health Center: 7-1923

ADULT ACTIVITY HIGHLIGHTS

SENSES SPA FITNESS CLASSES & SEMINARS

Sunrise Stretch - Donald's Pool - 7:00 am
Fab Abs - Senses Fitness Center - 8:30 am
Seminar: Improving Your Posture-Walk in Comfort - Senses Fitness Center - 9:00 am
Burn Fat Faster - Senses Spa & Salon - 3:00 pm
Walk in Acupuncture Pain & Stress Seminar - Senses Fitness Center - 3:30 pm
Group Cycling - Senses Fitness Center - 4:00 pm
Acupuncture Digestive Management - Senses Fitness Center - 5:15 pm



TASTING CLASSES

Cognac Tasting (21+) - Cove Cafe - 10:00 pm
Whiskey Tasting (21+) - Meridian - 10:30 pm
 Please make reservations for tastings at Guest Services for a nominal fee.
 Tasting Seminars are only for Guests 21 and older.

1820 SOCIETY: ICE CREAM SOCIAL

Cove Cafe, Deck 11, Forward - 4:00 pm
 Join your fellow Society members for some ice cream and conversation.



1820 SOCIETY: CHILLAX

The Tube, Deck 4, Aft - 9:45 pm
 Time to Chillax at 1820 Society!

ART OF THE THEME SHOW TOUR

Meridian, Deck 12, Aft - 4:30 pm
 Join us for a guided tour highlighting the design, Imagineering and artistry of the Disney Fantasy. This tour is reserved for Guests 18 and over.

ICE BREAKERS

The Tube, Deck 4, Aft - 10:15 pm
 Fancy some fun? Want to get to know your fellow Guests? Then join us as we break the ice in this fun filled game show

80'S/90'S REMIX WITH CLUB DJ J ALAN

The Tube, Deck 4, Aft - 11:15 pm
 Join Club DJ J Alan, as he spins the tunes and remix the 80's & 90's!

FUN FOR ALL AGES HIGHLIGHTS



CHIP-IT GOLF (12+)

Lobby Atrium, Deck 3, Midship - 2:30 pm
 It's par for the course for our Guests 12 and older to compete on our special "greens" in this fun tournament.



DISNEY ANIMATION: CARTOON PHYSICS

D Lounge, Deck 4, Midship - 3:15 pm
 Go behind the scenes at Walt Disney Animation Studios and see how flat drawings and pencil lines can come to life through basic techniques such as "Stretch and Squash", and create your own "bouncing ball" animation exercise in this entertaining and fun enrichment program.



DCL GIFT BAG JACKPOT BINGO

Bingo Pre-Sales start at 4:15 pm
D Lounge, Deck 4, Midship - 4:30 pm
 Four CASH prizes and ten fantastic Disney Cruise Line gift bags containing exclusive giveaway prizes. The snowball jackpot continues to grow and could be won anytime. Pre-Sales start 15 minutes prior to the game.



DISNEY VACATION CLUB GROUP PREVIEW

The Tube, Deck 4, Aft - 4:30 pm
 Want to learn more about taking magical vacations year after year? Please see a Disney Vacation Club representative on Deck 4, Midship, or call 7-2805 from your stateroom phone for more information about our interactive group presentation.

FAMILY CRAFTS

La Piazza, Deck 4, Aft - 6:15 pm
 Create a fun souvenir with your Cruise Staff that is yours to keep.

FAMILY DANCE PARTY

The Tube, Deck 4, Aft - 7:00 pm
D Lounge, Deck 4, Midship - 9:30 pm
 Bring the whole family and dance your cares away to some of your favorite hits!

OFFICER PIN TRADING

Preludes, Deck 3, Forward - 7:15 pm
 Come trade pins with the Officers of the Disney Fantasy.



FAMILY FUSION

D Lounge, Deck 4, Midship - 7:30 pm & 10:15 pm
 Bring the entire family and test your Disney knowledge in the high-tech interactive game show, Family Fusion.



FAMILY SUPERSTAR KARAOKE

D Lounge, Deck 4, Midship - 10:45 pm
 Join your Cruise Staff in D Lounge tonight and sing along to your favorite song - fun for everyone.

SAFETY ASHORE INFORMATION

While you will find many great experiences ashore, please remain vigilant about your personal safety and the safety of your belongings. As in any large urban tourist destination, you'll want to take some basic precautions to make the most of your time ashore.

- Be aware of your surroundings at all times. Avoid short cuts, narrow alleys and poorly lit streets.
- Avoid wandering from the main shopping and tourist areas into unfamiliar territory. If venturing out independently, have a plan, use only licensed taxi operators.
- Identity/Credit Card theft can occur anywhere. Please remain vigilant in monitoring the safe keeping of your personal information.
- Leave valuables in your room safe and avoid carrying large amounts of cash. Exercise caution when using ATMs. Cameras and handbags should be carried close to your body or concealed out of sight.
- Leave air transportation tickets and other travel documents in your room safe. When going ashore, each adult is required to carry a Driver's license, passport or other government-issued photo ID. - Note: Some ports may require guests to carry passports ashore.
- Most crimes are easier to commit in dark unlit areas. When going ashore at night, please be extra vigilant about your personal safety.

YOUTH ACTIVITY HIGHLIGHTS

DINE & PLAY

A convenience for families dining at 8:15 pm, our Youth Activities counselors will be available at 9:15 pm at the entrance of Royal Court, Enchanted Garden and Animator's Palate dining rooms to bring registered children to join the fun in the Youth Activity areas.



Deck 5, Midship (7-1440)
(3-12 years old) 7:30 am - 12:00 am

CRUISIN' WITH CRUSH

11:00 am
Be sure to check out Disney's Oceaneer Club to see Crush when he stops by!

HEFFALUMP EXPODISHUN

9:00 pm
The Heffalump is missing! Help us find him before the Wozzles do!



Deck 5, Midship (7-1445)
(3-12 years old) 9:00 am - 12:00 am

DISNEY ANIMATION: CREATING A CHARACTER

3:00 pm
Go behind the scenes at Walt Disney Animation Studios as Walt Disney himself talks about his most famous characters, then learn the basic techniques of drawing Mickey and Donald in this fun and interesting enrichment program.

GET THE HOOK

8:15 pm
A villainous villain has stolen Captain Hook's prized golden hook. Become a member of the Top Deck Detective Agency and help solve the clues to retrieve Hook's hook.



Deck 13, Midship (7-9743)
(11-14 years old) 9:00 am - 1:00 am

BRAINS AND BRAWNS

6:45 pm
You will compete against each other to solve clues, take part in physical challenges, and reach the finish first.

ANYONE CAN COOK: PIZZA

10:00 pm
Anyone can cook as we work together to create some of our favorite treats. From our galley to yours; join our chef as they show you how to create pizza!



Entrance on Deck 4, Forward (7-9418)
(14-17 years old) 11:00 am - 2:00 am

PUMP IT UP

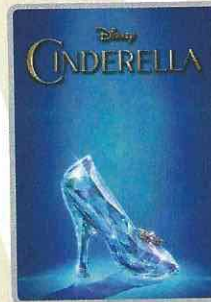
9:00 pm
Join us in the Fitness Center for a Teen Only workout. Meet in Vibe to join in!

ANYONE CAN COOK: PIZZA

11:00 pm
Anyone can cook as we work together to create some of our favorite treats. From our galley to yours; join our chef as they show you how to create pizza!

BUENA VISTA THEATRE

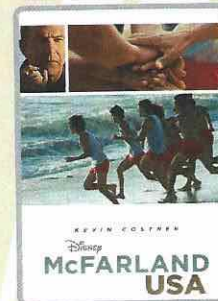
Deck 4 & 5, Midship
Today's Movies



11:30 am & 10:30 pm
Duration:
1 hr 52 mins
Rating: PG



2:00 pm
Duration:
1 hr 48 mins
Rating: PG



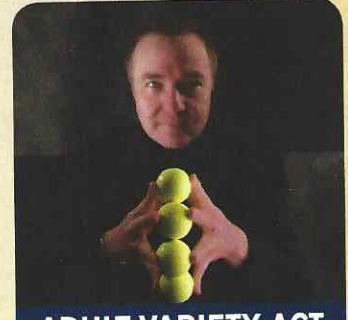
5:15 pm & 8:00 pm
Duration: 2 hrs 9 mins
Rating: PG



FAMILY VARIETY ACT

Enjoy the Comedy and Hypnosis of Ricky Kalmon in this fun-filled show for the entire family.

The Tube,
Deck 4, Aft,
7:30 pm



ADULT VARIETY ACT

Featuring the Magic & Comedy of Levent, as he entertains you in this adult exclusive show.

The Tube (18+),
Deck 4, Aft,
10:45 pm

YOUTH ACTIVITIES OPEN HOUSE

Open House is an opportunity for all to come and participate in a variety of exciting activities and free time in the Oceaneer Club, Oceaneer Lab, it's a small world nursery, Vibe and Edge throughout the cruise. During these times secured programming will still be offered in the other venue for those looking to check their children into care.

Disney's Oceaneer Club: 11:00 pm - 12:00 am

Disney's Oceaneer Lab: 9:00 am - 11:00 am

Edge: 9:00 am - 10:00 am & 5:00 pm - 6:30 pm

Vibe: 11:00 am - 12:00 pm & 6:45 pm - 8:30 pm

MORE TO ENJOY WHILE ONBOARD

THE BRITISH ISLES & EUROPEAN VARIETY

Disney Cruise Line is now visiting more than 15 European Countries in Summer 2016! For the first time, Disney Magic will be sailing to the British Isles, including visits to Scotland, England, Ireland and France, as well as returning with select sailings to Norway, Iceland and the Mediterranean and the Greek Isles! Visit the Onboard Sales Desk for more information.



DISNEY VACATION CLUB® GROUP PREVIEW

Want to learn more about taking magical vacations year after year? Please see a Disney Vacation Club representative on Deck 4, Midship, or call 7-2805 from your stateroom phone for more information about our interactive group presentation.



PORT AND SHOPPING INFORMATION

Cozumel is not to be missed offering some of the best shopping this cruise! Meet your Port Shopping Guide Johan in Diamonds International #1a between 9:30 am - 11:30 am. Make sure to pick up your shopping shopping map & coupons on the gangway and your voucher for a Free Sombrero Charm! Free all day raffle in Diamonds International.



Connect@Sea

We are now offering a NEW and improved Internet service to stay connected on your cruise like no other in the industry! Internet packages range from \$0.25 per MB - \$89.00 (1000 MB package). For more information contact your Connect@Sea Expert or Guest Services onboard.

ONBOARD AIRLINE CHECK IN

Stop by the Guest Services Desk, Deck 3, Midship to find out about enrolling in our Onboard Airline Check In Service.

FREE ON DEMAND TV

Watch Disney movies, Hollywood features, ABC shows, and even captioned content, plus much more "On Demand" for FREE in the comfort of your stateroom! Bookmark your movie and come back to watch it later. Press MENU on your stateroom television remote control and follow the prompts.



ACUPUNCTURE

Acupuncture is safe and effective medicine that allows your body to heal itself. It is painless, deeply relaxing and rejuvenating for mind and body, and is effective for various health conditions.

See your onboard Acupuncturist for your complimentary consultation.
Senses Spa & Salon, 7-1465



Hola! We have arrived at the island paradise of Cozumel just off the coast of Mexico. This is the perfect day to enjoy the beach in Cozumel or explore the island on a Jeep tour.

There are a myriad of options so make sure to book your place at the Port Adventures desk, Deck 5, Midship.

BELLARRI

Discover the beautifully elegant jewelry pieces by BELLARRI.



WHITE CAPS
DECK 3, FORWARD

SHOPPING

STYLISH WATCHES ONBOARD

Whether you need a tool for strict timekeeping or a fun fashion accessory, visit White Caps and browse the wide selection of stylish watches available including popular brands such as Ernst Benz, Michele, and Shinola. Deck 3, Forward.

HAIR BRAIDING ONBOARD

Add some flair to your hair when you visit a Disney Cruise Line® hair braiding station! Stop by a station today for more information and to learn all about the available braiding styles. Subject to restrictions and availability. Deck 11, Midship.

OFFICER PIN TRADING

Come and trade pins with the Officers of the Disney Fantasy Cruise Ship at 7:15 pm in Preludes, Deck 3, Forward.

UNIQUE JEWELRY FROM BELLARRI COLLECTIONS

Add a splash of color to your outfit with one of the elegant and unique jewelry pieces from BELLARRI Collections. Select the piece that most suits your style when you visit White Caps, Deck 3, Forward.

UNIQUE DISNEY ART AT THE VISTA GALLERY

Stop by the Vista Gallery to view original artwork by a variety of celebrated Disney artists featuring some of your favorite Disney characters. Also check out unique Disney art painted on original dessert plates from the Animator's Palate Restaurants on the Disney Magic® Cruise Ship and Disney Wonder® Cruise Ship. Created by popular Disney artists, Mark Seppala and Joe Kaminski, these one-of-a-kind plates are available exclusively on Disney Cruise Line® while supplies last. Deck 4, Midship.

H2O SPA PRODUCTS SPECIAL PROMOTION

Restore moisture and softness with marine-rich formulas from H2O Plus. Swing by White Caps and receive a complimentary gift with your purchase of \$50.00 or more of H2O Plus Spa products, while supplies last. Deck 3, Forward.

Due to port regulations, when the ship is docked, the stores will remain closed.



GET THE PICTURE

Order a Get the Picture! photo disc and share your vacation memories digitally! No need to decide which photos to take home now, select your photos from the comfort of your home.

Print, send and share your photos easily!
Offer available per stateroom. Hurry as supplies are limited.

**Terms and conditions apply. Photos captured on your vacation are only available for purchase during this cruise.*

DEVIAS 05-18-2015 ©DISNEY

IMPORTANT INFORMATION

Security Notice

All Guests (including children) who wish to disembark the ship are required to present their Key to the World card at the gangway. A photo ID is also required for those Guests who are 18 years of age or older. Guests under the age of 18 are required to have a parent, guardian or other responsible adult sign an authorization form at the Guest Services Desk if they wish to go ashore unaccompanied or with any adult from another stateroom.

Sunscreen/Insect Repellent Advisory

Use sunscreen first and protect against mosquito bites and related illnesses by applying insect repellent on top of sunscreen when going ashore. Insect repellent is available for purchase in

Cold and Flu Reminder

Please wash hands frequently and thoroughly, particularly before meals. Contact the Health Center by dialing 7-1923, should anyone in your party become ill.

Corridor Quiet Hours

As a courtesy to all our Guests, please recognize quiet hallway hours from 10:00 pm til 8:00 am

Inclement Weather

For the safety of all Guests, outdoor events may be changed due to unforeseen weather conditions.

Environmental Message

With Disney's commitment to the Environment, please refrain from throwing anything over the Ship's side. Thank you!

No Reserved Seats Policy

As a courtesy to all our Guests, we kindly advise that the saving of seats is not permitted in the Walt Disney Theatre, and the saving of the sun loungers is not permitted on Deck 11, 12, and 13. Items left unattended will be returned to lost and found at Guest Services, Deck 3 Midship.

Smoking

For the comfort of our Guests, the following areas are designated as smoking areas:
*Deck 13, forward, port side by Currents
*Deck 12, aft, port side outdoor area that is accessible through the Meridian Lounge
*Deck 4, aft, port side from 6:00 pm to 6:00 am only (all of Deck 4 is non-smoking from 6:00 am to 6:00 pm)
Smoking is prohibited inside all Guest staterooms and on stateroom verandahs. Guests found smoking in their staterooms or on their verandahs will be charged a \$250 stateroom recovery fee. Electronic cigarettes may only be

Walt Disney Theatre

Theatrical performances may use artificial fog, strobe lights, pyrotechnics and other special effects. For the safety of our performers and the comfort of those around you, the use of any photography, video recording device or any electronic equipment is prohibited.

Verandah Safety

Please do not leave any combustible materials on your balcony when not present in your stateroom for safety reasons.

Morning	8:30	8:45	9:00	9:15	9:30	9:45	10:00	10:15	10:30	10:45	11:00	11:15	11:30	11:45	12:00	12:15	12:30	12:45	1:00	1:15	1:30			
FUNNEL VISION	The Jungle Book (G) Funnel Vision								Monsters, Inc. (G) Funnel Vision								Tangled (PG) Funnel Vision							
BUENA VISTA THEATRE													Cinderella (2015) (PG) Duration: 1 Hour 52 Minutes											
CHARACTERS																								
FUN FOR ALL AGES	Youth Activities Open House 🍷 Disney's Oceaneer Lab						Craft Corner 🍷 Disney's Oceaneer Lab						Youth Activities Open House 🍷 Vibe											
ADULTS	Fab Abs Senses Fitness Center		Friends of Bill W. Outlook				Posture Analysis Senses Fitness Center																	
VIBE 14-17 YEARS OLD											Youth Activities Open House 🍷				Sun Deck Fun				Fifa Challenge					
EDGE 11-14 YEARS OLD	Youth Activities Open House 🍷						Craft Corner				Xbox Challenge				Matinee Movie									
OCEANEER LAB 3-12 YEARS OLD	Youth Activities Open House 🍷						Craft Corner 🍷				Wii Challenge				Lunch				Pictionary					
OCEANEER CLUB 3-12 YEARS OLD	Craft Corner		Wii Challenge		Magic PlayFloor 🍷		Cruisin' with Crush 🍷						Parachute Games 🍷						Game Challenge					
			Scavenger Hunt						Dress Up Fun 🍷										Craft Corner					

Afternoon	1:45	2:00	2:15	2:30	2:45	3:00	3:15	3:30	3:45	4:00	4:15	4:30	4:45	5:00	5:15	5:30	5:45	6:00	6:15	6:30	6:45			
FUNNEL VISION					Wreck-It Ralph (PG) Funnel Vision								Cinderella (Classic) (G) Funnel Vision								Robin Hood (G) Funnel Vision			
BUENA VISTA THEATRE	Big Hero 6 (PG) Duration: 1 Hour 48 Minutes																McFarland, USA (PG) Duration: 2 Hours 9 Minutes							
CHARACTERS			Chip & Dale Dk 4, Balcony		Goofy Dk 4, Balcony		Donald Dk 4, Balcony		Pluto Preludes		Ariel Lobby Atrium (V)		Goofy Dk 4, Balcony											
FUN FOR ALL AGES			Chip It GOLF Lobby Atrium (12+)		Disney ANIMATION Cartoon Physics D Lounge		Bingo Pre Sales		DCL Gift Bag Jackpot Bingo BINGO D Lounge		Live Music with Duo Rika Lobby Atrium		WISHES Walt Disney Theatre											
ADULTS					Live Guitar With David Kenny Deck 12 Stage				David Kenny LIVE Deck 12 Stage				Art of The Theme Show Tour Meridian											
VIBE 14-17 YEARS OLD	Fifa Challenge		Boys and Girls Chill				Sun Deck Fun				Super Sloppy Science				Teen Choice				Open House					
EDGE 11-14 YEARS OLD	Tween Choice				Wii Challenge				Sports Deck Fun				Game Challenge		Youth Activities Open House 🍷				Brains and Brawns					
OCEANEER LAB 3-12 YEARS OLD	Float Fun Trivia				Disney Animation: Creating a Character				Bingo 🍷				Dinner				Parachute Games							
OCEANEER CLUB 3-12 YEARS OLD	Game Challenge		Magic PlayFloor 🍷		Play-Doh Fun 🍷		Magic Show 🍷										Craft Corner 🍷				Big Top Fun Fest! 🍷			
	Craft Corner						Memory Wall 🍷		Dress Up Fun 🍷															

Evening	7:00	7:15	7:30	7:45	8:00	8:15	8:30	8:45	9:00	9:15	9:30	9:45	10:00	10:15	10:30	10:45	11:00	11:15	11:30	11:45	12:00			
FUNNEL VISION					A Bug's Life (G) Funnel Vision								DisneyNature: Oceans (G) Funnel Vision											
BUENA VISTA THEATRE					McFarland, USA (PG) Duration: 2 Hours 9 Minutes								Cinderella (2015) (PG) Duration: 1 Hour 52 Minutes											
CHARACTERS	Tiana Lobby Atrium (V)		Cinderella Lobby Atrium		Minnie Dk 4, Balcony		Cinderella Lobby Atrium (V)		Stitch Preludes		Chip & Dale Preludes		Pluto Dk 4, Balcony											
FUN FOR ALL AGES	Family Dance Party The Tube		Variety Show: Ricky Kalmon The Tube				WISHES Walt Disney Theatre				Family Dance Party D Lounge		Family Fusion D Lounge		Family KARAOKE D Lounge									
ADULTS	NHL Playoffs O'Gills Pub (Subject to satellite availability)				DJ Requests The Tube				1820 Society: Chillax				Ice Breakers The Tube		The Comedy & Magic of LEVENT The Tube		80's/90's Remix with Club DJ J Alan The Tube							
VIBE 14-17 YEARS OLD	Youth Activities Open House 🍷						Pump It Up				Gender Wars				Anyone Can Cook: Pizza									
EDGE 11-14 YEARS OLD	Brains and Brawns		ESPN Dream Team Draft Day - Baseball				Tween Choice		Picture This		Anyone Can Cook: Pizza				Invade Vibe									
OCEANEER LAB 3-12 YEARS OLD	Super Sloppy Science 🍷				Get the Hook 🍷				Magic PlayFloor 🍷				Wii Challenge				Monster's Inc Open "Mike" Night 🍷							
OCEANEER CLUB 3-12 YEARS OLD	Craft Corner		Picture This 🍷		Game Challenge		Heffalump Expodishun				Magic PlayFloor 🍷		Youth Activities Open House 🍷											

Symbol for activities that will be repeated during the cruise

Youth Activities Open House

FOLD

Fold along the dotted lines and take me with you so you don't miss any of the fun!

FOLD

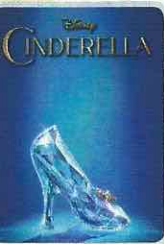
IN THE SPOTLIGHT SERIES
JUMP UP! SERIES
CREATE & INVENT SERIES

CLUBHOUSE SERIES
STORYBOOK SERIES

FRIDAY, MAY 18, 2015 - COZUMEL, MEXICO

BUENA VISTA THEATRE

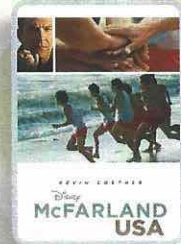
Deck 4 & 5, Midship



1:30 am & 10:30 pm
Duration: 1 hr 52 mins
Rating: PG



2:00 pm
Duration: 1 hr 48 mins
Rating: PG



5:15 pm & 8:00 pm
Duration: 2 hrs 9 mins
Rating: PG

Character Appearances

CHIP & DALE
Deck 4, Balcony - 2:30 pm
Preludes - 9:30 pm

STITCH
Preludes
5:00 pm & 10:00 pm

CAPTAIN HOOK
Preludes - 2:45 pm

MICKEY MOUSE
Deck 4, Balcony
5:00 pm & 7:30 pm

GOOFY
Deck 4, Balcony
3:00 pm & 5:30 pm

ARIEL
Lobby Atrium (V) - 5:00 pm

DAISY DUCK
Preludes - 3:15 pm

BELLE
Preludes - 5:30 pm
Lobby Atrium (V) - 7:45 pm

DONALD DUCK
Deck 4, Balcony - 4:00 pm

CINDERELLA
Lobby Atrium - 7:30 pm
Lobby Atrium (V) - 9:45 pm

PLUTO
Preludes - 4:30 pm
Deck 4, Balcony - 10:00 pm

PRINCESS TIANA
Lobby Atrium (V)
4:30 pm & 7:15 pm

MINNIE MOUSE
Deck 4, Balcony
4:30 pm & 9:30 pm



(H) Hallway - (S) Starboard Side - (P) Port Side - (V) Vestibule

For details of daily Disney character appearances, refer to the character line on your Navigator Grid, or the digital character board in the Lobby Atrium.

YOUTH ACTIVITIES THEMED EXPERIENCES

CLUBHOUSE SERIES
focuses on movement and features content which appeals to younger children.

JUMP UP! SERIES
includes large group games & movement-oriented activities.

IN THE SPOTLIGHT SERIES
focuses on children's stage presence with lots of activities and enthusiasm.

STORYBOOK SERIES
is designed with a strong connection to the Disney classic stories.

CREATE & INVENT SERIES
will have a tactile focus allowing children to create and admire their work.

SOLVE IT! SERIES
are less active, but will challenge children with problem/solutions-based activities.

YOUTH ACTIVITIES OPEN HOUSE

A non-secured program with activities for families, adults and children of all ages to enjoy together.

SHIP DIRECTORY

YOUTH ACTIVITIES

DISNEY'S OCEANEER CLUB	DECK 5, MID	7:30 AM - 12:00 AM
DISNEY'S OCEANEER LAB	DECK 5, MID	9:00 AM - 12:00 AM
EDGE	DECK 13, MID	9:00 AM - 1:00 AM
VIBE	DECK 4, FWD	11:00 AM - 2:00 AM
IT'S A SMALL WORLD NURSERY	DECK 5, MID	7:30 AM - 11:00 PM

POOLS & MORE

* Children under 12 must have adult supervision in pool areas.

AQUADUCK	DECK 12, MID	9:00 AM - 10:00 PM
AQUALAB	DECK 12, AFT	1:00 PM - 7:00 PM
DONALD'S POOL	DECK 11, MID	9:00 AM - 10:00 PM
MICKEY'S POOL	DECK 11, MID	8:30 AM - 10:30 PM
MICKEY'S SLIDE	DECK 11, MID	9:00 AM - 6:00 PM
NEMO'S REEF	DECK 11, MID	9:00 AM - 6:00 PM
QUIET COVE POOL (18+)	DECK 11, FWD	8:00 AM - 11:00 PM
SATELLITE FALLS (18+)	DECK 13, FWD	6:00 AM - 8:00 PM

Complimentary pool vests are available for children to use in the pools onboard. They are located on the pool deck.

RECREATION

GOLF/SPORTS SIMULATORS	DECK 13, AFT	9:00 AM - 6:00 PM
GOOFY GOLF	DECK 13, AFT	8:00 AM - 10:00 PM
GOOFY'S SPORTS DECK	DECK 13, AFT	8:00 AM - 6:00 PM
MIDSHIP DETECTIVE AGENCY	DECKS 2 & 5, MID	9:00 AM - 10:00 PM
PORT ADVENTURES DESK	DECK 5, MID	7:30 AM - 11:00 AM 7:00 PM - 8:30 PM
SENSES FITNESS CENTER (18+)	DECK 11, FWD	6:30 AM - 10:00 PM

GENERAL INFORMATION

ARR-CADE	DECK 11, AFT	24 HOURS
DISNEY VACATION CLUB	DECK 4, MID	4:00 PM - 10:00 PM
GUEST SERVICES	DECK 3, MID	24 HOURS
MEDICAL HEALTH CENTER	DECK 1, FWD	9:30 AM - 11:00 AM 4:30 PM - 7:00 PM
ONBOARD SALES DESK	DECK 4, MID	8:00 AM - 9:30 AM 3:30 PM - 6:00 PM 7:30 PM - 10:00 PM
PORT & SHOPPING DESK	DECK 4, MID	9:30 AM - 10:30 AM 7:30 PM - 8:30 PM
PRELUDES	DECK 3, FWD	5:45 PM - 6:30 PM 8:00 PM - 8:45 PM
SENSES SPA AND SALON	DECK 11, FWD	8:00 AM - 10:00 PM
SHUTTERS PHOTO GALLERY	DECK 4, MID	5:00 PM - 10:30 PM
SHUTTERS DIGITAL	DECK 4, MID	24 HOURS

SHOPPING

BIBBIDI BOBBIDI BOUTIQUE	DECK 5, MID	9:00 AM - 9:00 PM
MICKEY'S MAINSAIL	DECK 3, FWD	4:30 PM - 11:00 PM
QUACKS	DECK 11, MID	
SEA TREASURES	DECK 3, FWD	4:30 PM - 11:00 PM
VISTA GALLERY	DECK 4, MID	5:00 PM - 10:00 PM
WHITE CAPS	DECK 3, FWD	4:30 PM - 11:00 PM
WHOZITS & WHATZITS	DECK 11, MID	5:30 PM - 10:00 PM

DINNER MENU

Animator's Palate : Pacific Rim Cuisine
Enchanted Garden : Continental Market Cuisine
Royal Court : French Cuisine
Dining Times: 5:45pm & 8:15pm

DRINK OF THE DAY

Lava Smoothie (Non-Alcoholic)
Yellow Bird (Alcoholic)

WEATHER FORECAST

Today: Sunny
High: 82°F/28°C
Tomorrow: Sunny
High: 80°F/27°C

Evening Attire: Cruise Casual

DINING & LOUNGES

BREAKFAST

CABANAS CONTINENTAL	DECK 11, AFT	6:15 AM - 6:45 AM
CABANAS	DECK 11, AFT	6:45 AM - 10:45 AM
ENCHANTED GARDEN	DECK 2, MID	7:30 AM - 9:30 AM
ROYAL COURT	DECK 3, MID	7:30 AM - 9:00 AM

LUNCH

CABANAS	DECK 11, AFT	11:30 AM - 2:00 PM
FILLMORE'S FAVORITES	DECK 11, MID	11:00 AM - 6:30 PM
LUIGI'S PIZZA	DECK 11, MID	11:00 AM - 6:30 PM
ROYAL COURT	DECK 3, MID	12:00 PM - 1:30 PM
TOW MATER'S GRILL	DECK 11, MID	11:00 AM - 11:00 PM

DINNER

ANIMATOR'S PALATE	DECK 3, AFT	5:45 PM & 8:15 PM
ENCHANTED GARDEN	DECK 2, MID	5:45 PM & 8:15 PM
ROYAL COURT	DECK 3, MID	5:45 PM & 8:15 PM
CABANAS TABLE SERVICE	DECK 11, AFT	6:30 AM - 8:30 PM
PALO (18+) (RESERVATIONS REQ. & NOM. FEE APPLIES)	DECK 12, AFT	6:00 PM - 8:30 PM
REMY (18+) (RESERVATIONS REQ. & NOM. FEE APPLIES)	DECK 12, AFT	6:00 PM - 8:30 PM

LATE NIGHT SNACKS

LA PIAZZA (18+)	DECK 4, AFT	10:45 PM - 11:45 PM
LUIGI'S PIZZA	DECK 11, MID	9:30 PM - 12:00 AM

ADDED FEATURES

BEVERAGE STATION	DECK 11, MID	24 HOURS
EYE SCREAM	DECK 11, MID	11:00 AM - 11:00 PM
ROOM SERVICE	DIAL 0	24 HOURS

ENTERTAINMENT - LOUNGES - BARS

Adults must be 21 and older to consume alcoholic beverages.

BON VOYAGE	DECK 3, MID	10:00 AM - 11:30 PM
COVE BAR (18+)	DECK 11, FWD	10:00 AM - 11:00 PM
COVE CAFE (18+)	DECK 11, FWD	7:00 AM - 12:00 AM
CURRENTS (18+)	DECK 13, FWD	10:00 AM - 11:30 PM
D LOUNGE	DECK 4, MID	SHOWTIMES
FROZONE TREATS	DECK 11, MID	11:00 AM - 11:00 PM
LA PIAZZA (18+ AFTER 9:00 P.M.)	DECK 4, AFT	3:00 PM - 12:00 AM
MERIDIAN (18+)	DECK 12, AFT	10:00 AM - 12:00 AM
O'GILLS PUB (18+ AFTER 9:00 PM)	DECK 4, AFT	12:00 PM - 12:00 AM
OOH LA LA (18+)	DECK 4, AFT	5:30 PM - 12:00 AM
OUTLOOK	DECK 14, MID	
SKYLINE (18+)	DECK 4, AFT	5:30 PM - 12:30 AM
THE TUBE (18+ AFTER 9:00 P.M.)	DECK 4, AFT	7:00 PM - 8:15 PM 9:30 PM - 2:00 AM
VISTA CAFE	DECK 4, MID	7:00 AM - 11:00 PM
WAVES	DECK 12, AFT	10:00 AM - 6:00 PM

Public Health Advisory: Consuming raw or under-cooked meats, poultry, seafood, shellfish, or eggs may increase your risk for food borne illness, especially if you have certain medical condition.

All Ashore: Approx. 8:30 am

All Aboard: 3:45 pm

SHIP'S AGENT IN COZUMEL
ACS (Agencia Consignataria del Sureste), Calle 6 Norte No. 14 X
10 Y 15 Ave., Cozumel, Q. Roo.,
Mexico 77660. Tel. 521-987-873-9490

IMPORTANT NUMBERS

Fire/Security: 7-3001
Medical EMERGENCY: 7-3000
Health Center: 7-1923