

# PERSONAL NAVIGATOR



THURSDAY, JANUARY 8, 2015

Sunrise: 6:19 am Sunset: 5:24 pm  
Evening Attire: Semi Formal

Today: Sunny High: 76°F/24°C  
Tomorrow: Cloudy High: 62°F/17°C

DAY AT SEA

## Disney's Believe

Genie from Aladdin and many of Disney's most beloved magic makers take a father on a magical journey to show him that anything is possible if you just believe.

WALT DISNEY THEATRE  
DECK 3 & 4, FORWARD  
6:15 pm & 8:30 pm

As a courtesy to all Guests, we kindly advise that the saving of seats is not permitted in the Walt Disney Theatre.



Assistance available at the entrance to the Walt Disney Theatre 30 minutes prior to show time.



## Disney FANTASY Fun Facts

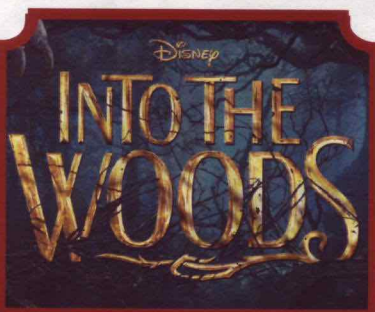
While the cute baby elephant, Dumbo serves as a fantastic stern character, in real life he would have to gather 24,266 other adult male African elephants to match the weight of the Disney Fantasy.

A "light point" is shipbuilders' lingo for anything that's a light. There are approximately 80,000 light points on the Disney Fantasy – "double the normal number for a ship this size," according to Meyer Werft, the shipyard in Germany where the Disney Fantasy was built. The large number is the result of Disney's flair for theatrical experiences – accomplished primarily with LEDs and other "environmentally friendly" lighting.

Looking upward in the ship's Lobby Atrium brings Guest's eye-to-crystal with a glowing piece of "Art Nouveau-inspired jewelry" – a cascading chandelier flowing downward from a massive stained-glass flourish on the ceiling in peacock hues of greens and blues. The chandelier itself is more than 10 feet in diameter, a one-of-a-kind work of art evoking a peacock in stained glass and more than 60,000 clear Swarovski crystal beads.

### Debark Talk Broadcast

Important information regarding disembarkation procedures for your journey home will be covered in this debarkation briefing. The broadcast will be shown continuously on channel 5 of your stateroom television for your convenience.



### MOVIE SPECIAL

This modern twist on the beloved Brothers Grimm fairy tales intertwines the plots of a few choice stories, exploring the consequences of the characters' wishes and quests.  
Duration: 2 hours and 4 Minutes

Walt Disney Theatre,  
Deck 3 & 4, Forward,  
2:00 pm

(Doors open 15 minutes prior to show time)



### Sports Simulators

Digital sports simulators are available at Goofy's Sports Deck on Deck 13, Aft. This state-of-the-art virtual sports experience includes golf, basketball, baseball, hockey, football and soccer. Book now at the Port Adventures desk, Deck 5, Midship.

## Don't Miss:

### Captain's Signing

White Caps, Deck 3, Forward - 1:45 pm

Meet the Master of the Disney Fantasy and have your cruise memories signed.

### Disney Behind the Scenes: Peter Del Vecho Frozen Artistry (18+)

Buena Vista Theatre, Deck 4 & 5, Midship - 2:00 pm

There are three elements to any great Disney Animation movie: a compelling story set in a believable world with engaging characters. Join Peter Del Vecho to learn what made Frozen such a success.

### Family Variety Show: Marcus Monroe

The Tube, Deck 4, Aft - 7:30 pm

Enjoy the Comedy & Juggling of Marcus Monroe as he entertains the entire family in this fun-filled show.

### Adult Variety Show: Drew Thomas (18+)

Walt Disney Theatre, Deck 3 & 4, Forward - 11:00 pm  
Doors open at 10:45 pm

Enjoy the Magic & Illusion of Drew Thomas as he entertains you in this adult-exclusive cabaret style show.

## DINNER MENU

Animator's Palate : Captain's Gala  
Enchanted Garden : Captain's Gala  
Royal Court : Captain's Gala

## DRINK OF THE DAY

High Tide (Alcoholic)  
Passion Cream Freeze  
(Non-Alcoholic)

### IMPORTANT NUMBERS

Fire/Security: 7-3001  
Medical Emergency: 7-3000  
Health Center: 7-1923



# ADULT ACTIVITY HIGHLIGHTS

## SENSES SPA FITNESS CLASSES & SEMINARS

*Yoga* - Donald's Pool - 7:00 am

*Footprint Analysis* - Senses Spa & Salon - 8:30 am & 5:00 pm

*Body Sculpt Boot Camp* (Nom. Fee) - Senses Fitness Center - 9:00 am

*Detox For Health and Weight Loss* - Senses Fitness Center - 10:30 am

*Secrets to a Flatter Stomach* - Senses Fitness Center - 11:30 am

*Acupuncture: Chinese Herbs* - Senses Spa & Salon - 1:15 pm

*Group Cycling* - Senses Fitness Center - 4:00 pm

*Fitness Frenzy* (13-17, Nom. Fee) - Senses Fitness Center - 7:00 pm

## TASTING CLASSES

*Chocolate & Liquor Tasting* (21+) - Ooh La La - 12:15 pm

*Rum Tasting* (21+) - Meridian - 1:00 pm

*Stem to Stern Wine Tasting* (21+) - Ooh La La - 1:45 pm

*Mixology* (21+) - Skyline - 2:00 pm & 4:00 pm

*Martini Tasting* (21+) - Meridian - 3:00 pm

*Italian Cocktail Tasting* (21+) - La Piazza - 4:30 pm

*Tequila & Margarita Tasting* (21+) - Ooh La La - 4:30 pm

Please make reservations for tastings at Guest Services for a nominal fee.

Tasting Seminars are only for Guests 21 and older.

## CLUB 18\*21 - 2000'S MUSIC CHALLENGE

*O'Gills Pub, Deck 4, Aft - 11:45 am*

Join your Cruise Staff as we navigate our way through the music of the 2000's.

## CLUB 18\*21 - LUNCH

*Royal Court, Deck 3, Midship - 12:30 pm*

Get to know your fellow 18\*21 Guests over a spot of lunch.

## CLUB 18\*21 - MIXER

*The Tube, Deck 4, Aft - 10:00 pm*

Come join fellow cruisers your own age at our exclusive Club 18\*21 event.

## ART OF THE THEME SHOW TOUR

*Meridian, Deck 12, Aft - 9:30 am*

Join us on a guided ship tour and discover the key ingredients that make the Disney Fantasy cruise ship one-of-a-kind.

## ESPN DREAM TEAM DRAFT DAY - BASEBALL

*O'Gills Pub, Deck 4, Aft - 9:45 am*

Play ball! Join the "Commissioner" and engage in this interactive fantasy baseball draft unlike anything you've ever seen! Can YOU draft the greatest baseball team of all time?

## ANYONE CAN COOK - APPLE STRUDEL

*D Lounge, Deck 4, Midship - 2:15 pm*

From our galley to yours. Join our chefs as they show you how to prepare delicious dishes. Today's Menu - Apple Strudel

# FUN FOR ALL AGES HIGHLIGHTS

## WAKE UP WITH DISNEY JUNIOR

*D Lounge, Deck 4, Midship - 8:30 am*

What happens when you experience unlimited fun with your favorite Disney Junior shows? You get an exciting dance party designed especially for preschoolers ages seven and under.

## DISNEY ANIMATION: PERSISTENCE OF VISION

*D Lounge, Deck 4, Midship - 9:15 am*

Go behind the scenes at Walt Disney Animation Studios and learn the principles that make animation work, and try your hand at creating your own easy animation demonstration in this fun and fascinating enrichment program.

## THE QUEST

*The Tube, Deck 4, Aft - 10:30 am*

Enjoy the wildest and wackiest scavenger team event on the seven seas!

## \$10,000 MEGA JACKPOT BINGO

*Bingo Pre-Sales start at 10:45 am*

*D Lounge, Deck 4, Midship - 11:00 am*

It's Big, it's Massive, it's Supersized! It's \$10,000 MEGA Jackpot Bingo! Take home \$10,000 if you can cover your card in 46 numbers or less. If not, we carry on to play for the biggest cash prize of the session. Pre-Sales start 15 minutes prior to game.

## DISNEY CHANNEL ON DECK

*Deck Stage, Deck 11, Midship - 12:45 pm*

Don't change that channel! It's time for a Disney Channel afternoon poolside! Your Cruise Staff will host an exciting day of games and contests in between your favorite Disney Channel shows! So sit back, relax, and enjoy the sun!

## DISNEY ANIMATION: STAGING A SCENE

*D Lounge, Deck 4, Midship - 12:45 pm*

Go behind the scenes at Walt Disney Animation Studios and learn how basic poses, silhouette, and placement (long shot, medium shot, close-up) enhance animation storytelling. Then, participate in a drawing exercise where you make the choices to communicate a story in this fun and fascinating enrichment program.

## TOWEL FOLDING

*The Tube, Deck 4, Aft - 2:00 pm*

Learn to create those amazing towel creatures you've seen in your stateroom all cruise long.

## FINAL JACKPOT BINGO

*Bingo Pre-Sales start at 3:45 pm*

*Buena Vista Theatre, Deck 4 & 5, Midship - 4:15 pm*

The snowball jackpot MUST BE WON at this final session! Beat the line and get your cards early. Who will be the lucky winner? It could be you! Pre-Sales start 30 minutes prior to game.

## MIRROR MIRROR

*D Lounge, Deck 4, Midship - 7:30 pm & 9:45 pm*

Head to D Lounge for the fairest game show of them all, Mirror Mirror. Featuring the Magic Mirror and everyone's favorite dwarf, Dopey.

## CLUB NEW YEAR'S EVE

*D Lounge, Deck 4, Midship - 10:15 pm*

Club New Year's Eve, you won't want to miss this journey of musical genres in history and performances by some of your favorite Cruise Staff. Bring your family and help us count down to a brand new year!



## THE QUEST

*The Tube, Deck 4, Aft - 10:30 am*

Enjoy the wildest and wackiest scavenger team event on the seven seas!

## \$10,000 MEGA JACKPOT BINGO

*Bingo Pre-Sales start at 10:45 am*

*D Lounge, Deck 4, Midship - 11:00 am*

It's Big, it's Massive, it's Supersized! It's \$10,000 MEGA Jackpot Bingo! Take home \$10,000 if you can cover your card in 46 numbers or less. If not, we carry on to play for the biggest cash prize of the session. Pre-Sales start 15 minutes prior to game.

## DISNEY CHANNEL ON DECK

*Deck Stage, Deck 11, Midship - 12:45 pm*

Don't change that channel! It's time for a Disney Channel afternoon poolside! Your Cruise Staff will host an exciting day of games and contests in between your favorite Disney Channel shows! So sit back, relax, and enjoy the sun!

## DISNEY ANIMATION: STAGING A SCENE

*D Lounge, Deck 4, Midship - 12:45 pm*

Go behind the scenes at Walt Disney Animation Studios and learn how basic poses, silhouette, and placement (long shot, medium shot, close-up) enhance animation storytelling. Then, participate in a drawing exercise where you make the choices to communicate a story in this fun and fascinating enrichment program.

## TOWEL FOLDING

*The Tube, Deck 4, Aft - 2:00 pm*

Learn to create those amazing towel creatures you've seen in your stateroom all cruise long.

## FINAL JACKPOT BINGO

*Bingo Pre-Sales start at 3:45 pm*

*Buena Vista Theatre, Deck 4 & 5, Midship - 4:15 pm*

The snowball jackpot MUST BE WON at this final session! Beat the line and get your cards early. Who will be the lucky winner? It could be you! Pre-Sales start 30 minutes prior to game.

## MIRROR MIRROR

*D Lounge, Deck 4, Midship - 7:30 pm & 9:45 pm*

Head to D Lounge for the fairest game show of them all, Mirror Mirror. Featuring the Magic Mirror and everyone's favorite dwarf, Dopey.

## CLUB NEW YEAR'S EVE

*D Lounge, Deck 4, Midship - 10:15 pm*

Club New Year's Eve, you won't want to miss this journey of musical genres in history and performances by some of your favorite Cruise Staff. Bring your family and help us count down to a brand new year!





# YOUTH ACTIVITIES HIGHLIGHTS

## DINE & PLAY

A convenience for families dining at 8:15 pm, our Youth Activities counselors will be available at 9:15 pm at the entrance of Royal Court, Enchanted Garden and Animator's Palate dining rooms to bring registered children to join the fun in the Youth Activity areas.



*Deck 5, Midship (7-5864) 9:00 am - 11:30 pm*

### OPEN HOUSE

8:00 am - 9:00 am

Your chance to see our toddler space, it's a small world nursery.



*Deck 5, Midship (7-1440)*

(3-12 years old)

9:00 am - 12:00 am

### ALOHA LUAU

11:15 am

It's party time, Hawaiian style! Come join us for a Luau experience and learn how to dance like Lilo & Stitch.

### CRUISIN' WITH CRUSH

2:00 pm

Be sure to check out Disney's Oceaneer Club to see Crush when he stops by!



*Deck 5, Midship (7-1445)*

(3-12 years old)

9:00 am - 12:00 am

### PISTON CUP CHALLENGE

9:30 am

It's Dinoco time and you're part of the pit crew! Design your own race car and see if you've got what it takes to end up in the winner's circle!

### SUPER SLOPPY SCIENCE

11:00 am

Join Professor Make-O-Mess in some of the most extreme experiments you will ever see in the world of Super Sloppy Science!



*Deck 13, Midship (7-9743)*

(11-14 years old)

9:00 am - 1:00 am

### MAGIC SHOW

9:15 pm

The Magnificent Magician will demonstrate to you some of the best known magic tricks on the sea.

### CROWNING OF THE COUCH POTATO

10:15 pm

Do you think you know your movies, TV and commercials? Well it's time to test your knowledge on all the recent releases.



*Entrance on Deck 4, Forward (7-9418)*

(14-17 years old)

9:00 am - 2:00 am

### DREAM NOW! SEA HOW! - THEATRICAL

11:00 am

Imagine a job where You are the person who brings to life the characters and their stories that have been imagined, dreamed and created. This is where you will meet one of the current Disney performers and will go behind the scenes and experience the magic that is created.

### DIVE INTO DJ'ING

1:45 pm

Hop on the turn tables and learn to scratch with our Club DJ.

# BUENA VISTA THEATRE

Deck 4 & 5, Midship  
Today's Movies

Open Captioning

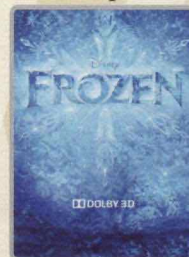
DOLBY.3D  
en Español



8:30 am

Duration: 1 hr 48 mins

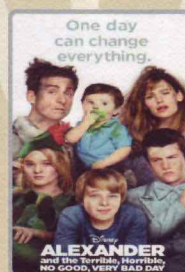
Rating: PG



10:45 am

Duration: 1 hr 48 mins

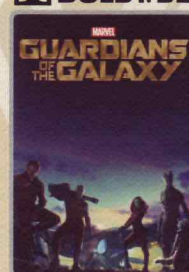
Rating: PG



5:30 pm & 8:30 pm

Duration: 1 hr 21 mins

Rating: PG



10:30 pm

Duration: 2 hrs 2 mins

Rating: PG-13



## FAMILY VARIETY ACT

Enjoy the  
Comedy & Juggling  
of Marcus Monroe  
as he entertains the  
entire family in this  
fun-filled show.

*The Tube,  
Deck 4, Aft,  
7:30 pm*



## ADULT VARIETY ACT

Enjoy the  
Magic & Illusion  
of Drew Thomas  
as he entertains you in  
this adult exclusive show.

*Walt Disney Theatre (18+),  
Deck 3 & 4, Forward,  
11:00 pm*

(Doors open 15 minutes prior to show time)

## YOUTH ACTIVITIES OPEN HOUSE

Open House is an opportunity for all to come and participate in a variety of exciting activities and free time in the Oceaneer Club, Oceaneer Lab, it's a small world nursery, Vibe and Edge throughout the cruise. During these times secured programming will still be offered in the other venue for those looking to check their children into care.

Disney's Oceaneer Club: 9:00 am - 10:30 am

Disney's Oceaneer Lab: 10:00 pm - 12:00 am

Edge: 5:00 pm - 7:00 pm

Vibe: 9:00 am - 10:00 am & 6:30 pm - 8:30 pm



# MORE TO ENJOY WHILE ONBOARD



The puppies from 101 Dalmatians have gone missing! Use your special detective "badge" to track down the puppies and catch the villain who took them.

**Deck 2 & 5, Midship,**  
9:00 am - 10:00 pm



**SENSES**  
SPA & SALON

**SPA TOPIA  
SPECIAL**

Full body exfoliation. Hotstone back massage on the back neck and shoulders and a foot and ankle massage.

75 mins. \$135

## GUESS THE CARAT!

Guess the carat weight of one of our exquisite Sophia Fiori diamond rings. Whoever guesses closest wins a pair of Midnight Black Sapphire studs!

9:30 am - 7:15 pm.  
Winners announced and raffle at 7:30 pm. Must be present to win!

White Caps, Deck 3, Forward.

\*This offer is not affiliated with Disney Cruise Line®.

*Sophia Fiori*



**Shutters**

Tonight is your last chance for professional portraits! Capture the magic of your vacation at one of our portrait studios and let the memories live.

Visit our professional portrait studios located in the Lobby Atrium, Deck 3, Midship.

5:00 pm - 6:00 pm  
7:15 pm - 8:30 pm  
9:30 pm - 10:30 pm

\*Please note that photos are available for viewing on our interactive photo kiosks approximately five hours after being taken and are only available for purchase during this cruise.



## BAHAMIAN VOYAGES

The Bahamas are renowned the world over for breathtaking beaches, incredible recreation and exceptional shopping experiences. Pair your exotic escape with the world-class comfort and service of a Disney cruise and make your getaway complete. Visit the Onboard Sales Desk for more information.



## DISNEY VACATION CLUB® GROUP PREVIEW

Want to learn more about taking magical vacations year after year? Please see a Disney Vacation Club representative on Deck 4, Midship, or call 7-2805 from your stateroom phone for more information about our interactive group presentation.



## RUNDISNEY: CASTAWAY CAY 5K REGISTRATION (10+)

Sign up today for the runDisney: Castaway Cay 5K! Please visit the Port Adventures Desk or the Guest Services Desk to register at anytime prior to our arrival at Disney's Castaway Cay. Please note that runners must be 10 years of age or older to participate.



## ARR-CADE

Where can you be a ninja, play the guitar like a rock star, race a car down the streets of Tokyo and along the way WIN some great prizes? Arr-cade located Deck 11, Aft where the pirates play.

## Connect @ Sea

We are now offering a NEW and improved Internet service to stay connected on your cruise like no other in the industry! Internet packages range from \$0.25 per MB - \$89.00 (1000 MB package). For more information contact your Connect@Sea Expert or Guest Services onboard.

Disney Cruise Line

**PORT ADVENTURES**

Disney's private island Castaway Cay not only offers a terrific family beach day, but many other excursions and rentals to compliment. Snorkeling, bike and float rentals, parasailing plus much more, means that there is something for everyone at Disney's Castaway Cay. To make your reservation, visit the

Port Adventures desk, Deck 5, Midship.

## SHOPPING

### HELPFUL SHOPPING TIP

While shopping onboard, you may collect your items from all three stores before proceeding to checkout at any register. No need to have to wait in line in each store to pay for your items separately! White Caps, Sea Treasures and Mickey's Mainsail, Deck 3, Forward.

### CAPTAIN'S SIGNING

Don't miss your chance to meet the Master of the Disney Fantasy! Stop by White Caps today at 1:45 pm where you can have your cruise mementos signed by our Captain. Deck 3, Forward.

### STYLISH WATCHES ONBOARD

Whether you need a tool for strict timekeeping or a fun fashion accessory, visit White Caps and browse the wide selection of stylish watches available including popular brands such as Skagen, Tissot, and Shinola. Deck 3, Forward.

### FRAGRANCE OF THE DAY

Stop by White Caps to test our selected fragrance today! Deck 3, Forward.

### NO TAX & DUTY FREE PORT STOPS? NO PROBLEM!

Why spend more than you need to while shopping on vacation? Don't miss your only chance for tax and duty free shopping by visiting the onboard merchandise stores where you'll find a large selection of cruise-themed souvenirs, liquor, men's and women's fashions, and luxury items such as fine jewelry and designer brands. White Caps, Sea Treasures, and Mickey's Mainsail, Deck 3, Forward.

## IMPORTANT INFORMATION

### Security Notice

All Guests (including children) who wish to disembark the ship are required to present their Key to the World card at the gangway. A photo ID is also required for those Guests who are 18 years of age or older. Guests under the age of 18 are required to have a parent, guardian or other responsible adult sign an authorization form at the Guest Service desk if they wish to go ashore unaccompanied or with an adult from another stateroom.

**Sunscreen/Insect Repellent Advisory**  
Use sunscreen first and protect against mosquito bites and related illnesses by applying insect repellent on top of sunscreen when going ashore. Insect repellent is available for purchase in White Caps.

### Cold and Flu Reminder

Please wash hands frequently and thoroughly, particularly before meals. Contact the Health Center by dialing 7-1923, should anyone in your party become ill.

### Corridor Quiet Hours

As a courtesy to all our Guests, please recognize quiet hallway hours from 10:00 pm til 8:00 am

### Inclement Weather

For the safety of all Guests, outdoor events may be changed due to unforeseen weather conditions.

### Environmental Message

With Disney's commitment to the Environment, please refrain from throwing anything over the Ship's side. Thank you!

### No Reserved Seats Policy

As a courtesy to all our Guests, we kindly advise that the saving of seats is not permitted in the Walt Disney Theatre, and the saving of the sun loungers is not permitted on Deck 11, 12, and 13. Items left unattended will be returned to lost and found at Guest Services, Deck 3 Midship.

### Smoking

For the comfort of our Guests, the following areas are designated as smoking areas:

\*Deck 13, forward, port side by Currents

\*Deck 12, aft, port side outdoor area that is accessible through the Meridian Lounge

\*Deck 4, aft, port side from 6:00 pm to 6:00 am only (all of Deck 4 is non-smoking from 6:00 am to 6:00 pm)

Smoking is prohibited inside all Guest staterooms and on stateroom verandahs. Guests found smoking in their staterooms or on their verandahs will be charged a \$250 stateroom recovery fee. Electronic cigarettes may only be used in designated smoking areas.

### Walt Disney Theatre

Theatrical performances may use artificial fog, strobe lights, pyrotechnics and other special effects. For the safety of our performers and the comfort of those around you, the use of any photography, video recording device or any electronic equipment is prohibited.

### Verandah Safety

Please do not leave any combustible materials on your balcony when not present in your stateroom for safety reasons.



| Morning                         | 8:30   | 8:45                             | 9:00 | 9:15 | 9:30 | 9:45 | 10:00  | 10:15  | 10:30 | 10:45 | 11:00 | 11:15 | 11:30   | 11:45                                   | 12:00 | 12:15 | 12:30 | 12:45 | 1:00  | 1:15 | 1:30 |
|---------------------------------|--|----------------------------------|------|------|------|------|--|--|-------|-------|-------|-------|---|---|-------|-------|-------|-------|---|------|------|
| FUNNEL VISION                   |  | Tinker Bell (G)<br>Funnel Vision |      |      |      |      |  | The Princess and the Frog (G)<br>Funnel Vision |       |       |       |       |   | Disney Channel on Deck<br>Funnel Vision |       |       |       |       |   |      |      |
| BUENA VISTA THEATRE             | Big Hero 6 (PG)  Open Captioning<br>Duration: 1 Hour 48 Minutes                |                                  |      |      |      |      | Frozen (PG)   en Español<br>Duration: 1 Hour 48 Minutes  |  |       |       |       |       |   |   |       |       |       |       |   |      |      |
| CHARACTERS                      | Jake<br>Lobby Atrium (V)   |                                  |      |      |      |      | Minnie<br>Dk 4, Balcony                                  |  |       |       |       |       | Doc McStuffins<br>Lobby Atrium (V)                            |   |       |       |       |       | Character<br>Dance Party<br>Lobby Atrium              |      |      |
| FUN FOR ALL AGES                | Disney Junior<br>D Lounge  |                                  |      |      |      |      | Disney<br>ANIMATION<br>Persistence of Vision<br>D Lounge |  |       |       |       |       | Crafts:<br>Door Hangers<br>La Piazza                          |   |       |       |       |       |   |      |      |
|                                 | Open House - Toddler Time<br>it's a small world nursery<br>< Starts at 8:00 am |                                  |      |      |      |      | Crafts: Origami Frogs<br>La Piazza                       |  |       |       |       |       | Bingo Pre-Sales<br>\$10,000 Mega Jackpot<br>BINGO<br>D Lounge |   |       |       |       |       | Disney Trivia<br>La Piazza                            |      |      |
|                                 |  |                                  |      |      |      |      | Toddler Time<br>Goofy's Sports Deck                      |  |       |       |       |       | The Quest<br>The Tube   |   |       |       |       |       | Disney Vacation Club Group Preview<br>The Tube        |      |      |
| ADULTS                          | Friends of Bill W.<br>Outlook  |                                  |      |      |      |      | Art of The Theme Show Tour<br>Meridian                   |  |       |       |       |       | Detox For Health and Weight Loss<br>Senses Fitness Center     |   |       |       |       |       | Secrets to a Flatter Stomach<br>Senses Fitness Center |      |      |
|                                 | Footprint Analysis<br>Senses Spa & Salon                                       |                                  |      |      |      |      | Boot Camp (Nom. Fee)<br>Senses Fitness Center            |  |       |       |       |       | ESPN Dream Team Draft Day - Baseball<br>O'Gills Pub           |   |       |       |       |       | Movie Quotes Trivia<br>O'Gills Pub                    |      |      |
| VIBE<br>14-17 YEARS OLD         | Youth Activities Open House  |                                  |      |      |      |      | Animation Antics   |  |       |       |       |       | Dream Now! Sea How! - Theatrical                              |   |       |       |       |       |   |      |      |
| EDGE<br>11-14 YEARS OLD         | Youth Activities Open House  |                                  |      |      |      |      | Trivia Time  |  |       |       |       |       | Ice Cream Social  |   |       |       |       |       | Brains and Brawns                                     |      |      |
| OCEANEER LAB<br>3-12 YEARS OLD  | Piston Cup Challenge   |                                  |      |      |      |      | Super Sloppy Science                                     |  |       |       |       |       | Wii Challenge   |   |       |       |       |       | Get the Hook  |      |      |
|                                 | Human Bingo  |                                  |      |      |      |      |  |  |       |       |       |       | Lunch   |   |       |       |       |       |   |      |      |
| OCEANEER CLUB<br>3-12 YEARS OLD | Youth Activities Open House  |                                  |      |      |      |      | Magic PlayFloor  |  |       |       |       |       | Aloha Luau  |   |       |       |       |       |   |      |      |
|                                 | Little Einstein's Adventure  |                                  |      |      |      |      |  |  |       |       |       |       |   |   |       |       |       |       | Tinker Bell's Talent Show                             |      |      |

| Afternoon                       | 1:45  | 2:00  | 2:15          | 2:30                             | 2:45                                   | 3:00  | 3:15 | 3:30                                    | 3:45                                       | 4:00   | 4:15                    | 4:30                                       | 4:45   | 5:00                               | 5:15 | 5:30 | 5:45                          | 6:00 | 6:15 | 6:30   | 6:45 |
|---------------------------------|---|---|---------------|----------------------------------|--|---|------|---|--|--|-------------------------|--|--|------------------------------------|------|------|-------------------------------|------|------|--|------|
| FUNNEL VISION                   |   | Star Wars Rebels: Disney Channel XD (TV-G)<br>Funnel Vision   |               |                                  |  | The Lion King (G)<br>Funnel Vision  |      |   |  |  |                         | Bedtime Stories (PG)<br>Funnel Vision      |  |                                    |      |      |                               |      |      |  |      |
| BUENA VISTA THEATRE             | Behind the Scenes: Peter Del Vecho<br>Buena Vista Theatre (18+) |   |               |                                  | Bingo Pre-Sales<br>Buena Vista Theatre |   |      |   | Final Jackpot Bingo<br>Buena Vista Theatre |  |                         |  | Alexander...Very Bad Day (PG)<br>Duration: 1 Hour 21 Minutes |                                    |      |      |                               |      |      |  |      |
| CHARACTERS                      |   | Stitch<br>Dk 4, Balcony   |               | Mickey<br>Dk 4, Balcony          |  | Minnie<br>Dk 4, Balcony   |      |   |  |  |                         | Daisy<br>Preludes                          |  |                                    |      |      |                               |      |      |  |      |
|                                 |   |   |               |                                  |  |   |      |   |  |  | Chip & Dale<br>Preludes |  | Mickey<br>Dk 4, Balcony                                      |                                    |      |      |                               |      |      |  |      |
| FUN FOR ALL AGES                | Captain's<br>Signing<br>White Caps                              |  INTO THE WOODS<br>Doors open at 1:30 pm<br>Duration: 2 Hrs 4 Mins Rating: PG |               |                                  |  |  WALT DISNEY THEATRE<br>Bingo Pre-Sales |      |   |  |  Final Jackpot<br>BINGO<br>Buena Vista Theatre |                         |  |  | Talent Show Rehearsals<br>D Lounge |      |      |                               |      |      |  |      |
|                                 |   | Towel Folding<br>The Tube   |               | Disney Tunes Trivia<br>La Piazza |  | Crafts: Memory Pages<br>La Piazza   |      | Toddler Time - Coffee & Play<br>Outlook |  | Live Piano with Clara Oman<br>La Piazza  |                         | Live Jazz with Fine Whines<br>Lobby Atrium |  | Walt Disney Theatre                |      |      |                               |      |      |  |      |
|                                 |   |   |               |                                  |  |   |      |   |  |  |                         |  |  |                                    |      |      |                               |      |      |  |      |
| ADULTS                          | Anyone Can Cook - Apple Strudel<br>D Lounge                     |   |               |                                  | Martini Tasting (21+)<br>Meridian      |   |      |   | Mixology (21+)<br>Skyline                  |  |                         |  | Margarita Tasting (21+)<br>Ooh La La                         |                                    |      |      | Pub Quiz<br>O'Gills Pub       |      |      |  |      |
|                                 | Behind the Scenes: Peter Del Vecho<br>Buena Vista Theatre       |   |               |                                  | Team Trivia<br>O'Gills Pub             |   |      |   | 90's Music Trivia<br>O'Gills Pub           |  |                         |  | Italian Cocktail Tasting (21+)<br>La Piazza                  |                                    |      |      |                               |      |      |  |      |
| VIBE<br>14-17 YEARS OLD         | Dive into DJ'ing  |   |               |                                  | Coffee Break                           |   |      |   | Dream Now See How                          |  |                         |  | Gender Wars  |                                    |      |      | Open House 🚪                  |      |      |  |      |
| EDGE<br>11-14 YEARS OLD         | Brains & Brawns   | GAGA Ball   |               |                                  |  | Anyone Can Cook   |      |   |  | Animation Antics   |                         |  |  | Youth Activities Open House 🚪      |      |      |                               |      |      |  |      |
| OCEANEER LAB<br>3-12 YEARS OLD  | Anyone Can Cook 🍳   |   |               |                                  | GAGA Ball 🎲                            |   |      |   | Craft Corner 🧶                             |  |                         |  | Dinner   |                                    |      |      | Animation Antics 🧶            |      |      |  |      |
|                                 | Craft Corner 🧶  |   |               |                                  |  |   |      |   | Game Challenge                             |  |                         |  |  |                                    |      |      | GAGA Ball                     |      |      |  |      |
| OCEANEER CLUB<br>3-12 YEARS OLD | Cruisin' with Crush   |   |               |                                  | Heffalump Expodishun 🦊                 |   |      |   | Mickey's Puzzle Playtime                   |  |                         |  | Dinner   |                                    |      |      | Little Einstein's Adventure 🧠 |      |      |  |      |
|                                 | Dress Up Fun  |   | Memory Wall 🧠 |                                  |  |   |      |   |  |  |                         |  |  |                                    |      |      | Dress Up Fun                  |      |      |  |      |

| Evening                         | 7:00                              | 7:15   | 7:30  | 7:45              | 8:00  | 8:15           | 8:30                | 8:45                     | 9:00           | 9:15                        | 9:30                                       | 9:45                        | 10:00                                    | 10:15                   | 10:30  | 10:45                        | 11:00       | 11:15        | 11:30                        | 11:45                | 12:00 |
|---------------------------------|-----------------------------------|--|---|-------------------|---|----------------|---------------------|--------------------------|----------------|-----------------------------|--|-----------------------------|--|-------------------------|--|------------------------------|-------------|--------------|------------------------------|----------------------|-------|
| FUNNEL VISION                   |                                   |  | Virtual Tours<br>Funnel Vision              |                   | Enchanted (G)<br>Funnel Vision                                |                |                     |                          |                |                             |  |                             | Remember the Titans (G)<br>Funnel Vision |                         |  |                              |             |              |                              |                      |       |
| BUENA VISTA THEATRE             |                                   |  |   |                   | Alexander....Very Bad Day (PG)<br>Duration: 1 Hour 21 Minutes |                |                     |                          |                |                             |  |                             |  |                         | Guardians of the Galaxy (PG-13)  DOLBY 3D<br>Duration: 2 Hours 2 Minutes |                              |             |              |                              |                      |       |
| CHARACTERS                      |                                   | Pluto<br>Preludes  |   | Goofy<br>Preludes |   |                |                     |                          |                |                             | Minnie<br>Dk 4, Balcony                    |                             | Mickey<br>Dk 4, Balcony                  |                         |  |                              |             |              |                              |                      |       |
|                                 |                                   |  | Mickey<br>Dk 4, Balcony                     |                   | Minnie<br>Dk 4, Balcony                                       |                |                     |                          |                |                             | Goofy<br>Preludes                          |                             | Donald<br>Preludes                       |                         |  |                              |             |              |                              |                      |       |
| FUN FOR ALL AGES                | Family<br>Dance Party<br>The Tube | The Comedy & Juggling of<br><b>MARCUS MONROE</b><br>The Tube |   |                   |   |                |                     |                          |                |                             |  |                             |  |                         |  |                              |             |              |                              |                      |       |
|                                 |                                   | Mirror Mirror<br>D Lounge                                    |   |                   |   |                | Walt Disney Theatre |                          |                |                             | Live Jazz with Fine Whines<br>Lobby Atrium |                             | Fine Whines LIVE<br>Lobby Atrium         |                         |  |                              |             |              |                              |                      |       |
| ADULTS                          |                                   |  | Live Guitar with Mike Archer<br>O'Gills Pub |                   |   |                |                     | Team Trivia<br>La Piazza |                |                             | DJ Requests<br>The Tube                    | 18*21 Mixer<br>The Tube     | Majority Rules<br>The Tube               | DJ Requests<br>The Tube | The Magic & Illusion of<br><b>DREW THOMAS</b><br>Walt Disney Theatre     |                              |             |              | Club DJ Jon Blak<br>The Tube |                      |       |
|                                 |                                   |  |   |                   |   |                |                     |                          |                | Dreem Duo LIVE<br>La Piazza | Ice Breakers<br>The Tube                   | Dreem Duo LIVE<br>La Piazza |  |                         |  |                              |             |              |                              |                      |       |
| VIBE<br>14-17 YEARS OLD         | Youth Activities Open House       |  |   |                   |   |                |                     |                          |                |                             | Pump It Up                                 |                             |  |                         | Mix and Match  |                              |             |              |                              |                      |       |
| EDGE<br>11-14 YEARS OLD         | Wii Challenge                     |  |   |                   |   | Game Challenge |                     |                          |                |                             |  | Magic Show                  |  |                         |  | Crowning of the Couch Potato |             |              |                              | Boys and Girls Chill |       |
| OCEANEER LAB<br>3-12 YEARS OLD  |                                   |  | Dance Party                                 |                   |   | Four Square    |                     |                          |                |                             |  |                             | Youth Activities Open House              |                         |  |                              |             |              |                              |                      |       |
|                                 | GAGA Ball                         |  |   |                   |   |                |                     |                          | Mirror, Mirror |                             |  |                             | Piston Cup Challenge                     |                         |  |                              |             |              | Magic PlayFloor              |                      |       |
| OCEANEER CLUB<br>3-12 YEARS OLD |                                   |  |   | Once Upon a Time  |   | Wii Challenge  |                     |                          | Memory Wall    |                             | Sing Along Fun                             |                             | Talent Show                              |                         |  |                              | Dance Party |              | Magic PlayFloor              |                      |       |
|                                 | Game Challenge                    |  |   |                   |   |                |                     |                          |                | Create a Postcard           |  |                             |  |                         |  |                              |             | Craft Corner |                              | Four Square          |       |

Symbol for activities that will be repeated during the cruise



Youth Activities Open House



FOLD

Fold along the dotted lines and take me with you so you don't miss any of the fun!

FOLD

IN THE SPOTLIGHT SERIES  
SOLVE IT! SERIES

JUMP UP! SERIES  
CREATE & INVENT SERIES

CLUBHOUSE SERIES  
STORYBOOK SERIES



THURSDAY, JANUARY 8, 2015 - DAY AT SEA

# BUENA VISTA THEATRE

Deck 4 & 5, Midship

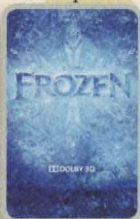
Open Captioning

DOLBY 3D  
en Español

DOLBY 3D



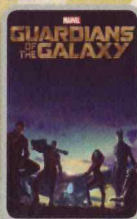
8:30 am  
Duration:  
1 hr 48 mins  
Rating: PG



10:45 am  
Duration:  
1 hr 48 mins  
Rating: PG



5:30 pm & 8:30 pm  
Duration:  
1 hr 21 mins  
Rating: PG



10:30 pm  
Duration:  
2 hrs 2 mins  
Rating: PG-13

## Character Appearances

**JAKE - THE NEVERLAND PIRATE**  
Lobby Atrium (V)  
9:30 am & 10:30 am

**DOC MCSTUFFINS**  
Lobby Atrium (V)  
10:00 am & 11:00 am

**PRINCESS MINNIE**  
Deck 4, Balcony  
10:15 am & 11:15 am

**CHARACTER DANCE PARTY**  
Lobby Atrium - 1:15 pm

**STITCH**  
Deck 4, Balcony - 2:15 pm

**MICKY MOUSE**  
Deck 4, Balcony - 2:45 pm,  
5:45 pm, 7:30 pm & 10:00 pm

**CHIP & DALE**  
Preludes - 5:00 pm

**MINNIE MOUSE**  
Deck 4, Balcony  
5:15 pm, 8:00 pm & 9:30 pm



(H) Hallway - (S) Starboard Side - (P) Port Side - (V) Vestibule

Don't forget your Camera to capture those magical moments!

For details of daily Disney character appearances, refer to the character line in your Navigator Grid, or the digital character board in the Lobby Atrium.

## YOUTH ACTIVITIES THEMED EXPERIENCES

**CLUBHOUSE SERIES**  
focuses on movement and features content which appeals to younger children.

**STORYBOOK SERIES**  
is designed with a strong connection to the Disney classic stories.

**JUMP UP! SERIES**  
includes large group games & movement-oriented activities.

**CREATE & INVENT SERIES**  
will have a tactile focus allowing children to create and admire their work.

**IN THE SPOTLIGHT SERIES**  
focuses on children's stage presence with lots of activities and enthusiasm.

**SOLVE IT! SERIES**  
are less active, but will challenge children with problem/solutions-based activities.

### YOUTH ACTIVITIES OPEN HOUSE

A non-secured program with activities for families, adults and children of all ages to enjoy together.

## SHIP DIRECTORY

### YOUTH ACTIVITIES

|                            |              |                    |
|----------------------------|--------------|--------------------|
| DISNEY'S OCEANEER CLUB     | DECK 5, MID  | 9:00 AM - 12:00 PM |
| DISNEY'S OCEANEER LAB      | DECK 5, MID  | 9:00 AM - 12:00 PM |
| EDGE                       | DECK 13, MID | 9:00 AM - 1:00 AM  |
| VIBE                       | DECK 4, FWD  | 9:00 AM - 2:00 PM  |
| IT'S A SMALL WORLD NURSERY | DECK 5, MID  | 9:00 AM - 11:30 PM |

### POOLS & MORE

\* Children under 12 must have adult supervision in pool areas.

|                       |              |   |
|-----------------------|--------------|---|
| AQUADUCK              | DECK 12, MID | 9:00 AM - 10:00 PM                      |
| AQUALAB               | DECK 12, AFT | 10:00 AM - 6:00 PM                      |
| DONALD'S POOL         | DECK 11, MID | 9:00 AM - 6:00 PM<br>8:00 PM - 10:00 PM |
| MICKY'S POOL          | DECK 11, MID | 8:30 AM - 10:30 PM                      |
| MICKY'S SLIDE         | DECK 11, MID | 9:00 AM - 6:00 PM                       |
| NEMO'S REEF           | DECK 11, MID | 9:00 AM - 6:00 PM                       |
| QUIET COVE POOL (18+) | DECK 11, FWD | 8:00 AM - 10:00 PM                      |
| SATELLITE FALLS       | DECK 13, FWD | 6:00 AM - 8:00 PM                       |

Complimentary pool vests are available for children to use in the pools onboard.  
They are located on the pool deck.

### RECREATION

|                             |                  |   |
|-----------------------------|------------------|---|
| GOLF/SPORTS SIMULATORS      | DECK 13, AFT     | 9:00 AM - 6:00 PM   |
| GOOFY GOLF                  | DECK 13, AFT     | 8:00 AM - 10:00 PM  |
| GOOFY'S SPORTS DECK         | DECK 13, AFT     | 8:00 AM - 6:00 PM   |
| MIDSHIP DETECTIVE AGENCY    | DECKS 2 & 5, MID | 9:00 AM - 10:00 PM  |
| PORT ADVENTURES DESK        | DECK 5, MID      | 10:00 AM - 12:00 PM<br>2:00 PM - 5:00 PM<br>7:00 PM - 8:30 PM |
| SENSES FITNESS CENTER (18+) | DECK 11, FWD     | 6:30 AM - 10:00 PM  |

### GENERAL INFORMATION

|                        |              |   |
|------------------------|--------------|---|
| ARR-CADE               | DECK 11, AFT | 24 HOURS  |
| DISNEY VACATION CLUB   | DECK 4, MID  | 9:00 AM - 11:30 AM<br>2:30 PM - 10:00 PM                      |
| GUEST SERVICES         | DECK 3, MID  | 24 HOURS  |
| MEDICAL HEALTH CENTER  | DECK 1, FWD  | 9:30 AM - 11:00 AM<br>4:30 PM - 7:00 PM                       |
| ONBOARD SALES DESK     | DECK 4, MID  | 9:00 AM - 12:00 PM<br>2:00 PM - 6:00 PM<br>7:30 PM - 10:00 PM |
| PORT & SHOPPING DESK   | DECK 4, MID  |   |
| PRELUDES               | DECK 3, FWD  | 2:30 PM - 3:15 PM<br>5:45 PM - 6:30 PM<br>8:00 PM - 8:45 PM   |
| SENSES SPA AND SALON   | DECK 11, FWD | 8:00 AM - 10:00 PM  |
| SHUTTERS PHOTO GALLERY | DECK 4, MID  | 10:00 AM - 11:00 PM   |
| SHUTTERS DIGITAL       | DECK 4, MID  | 24 HOURS  |

### SHOPPING

|                          |              |                     |
|--------------------------|--------------|---------------------|
| BIBBIDI BOBBIDI BOUTIQUE | DECK 5, MID  | 9:00 AM - 9:00 PM   |
| MICKY'S MAINSAIL         | DECK 3, FWD  | 9:30 AM - 11:00 PM  |
| QUACKS                   | DECK 11, MID | 10:00 AM - 4:00 PM  |
| SEA TREASURES            | DECK 3, FWD  | 9:30 AM - 11:00 PM  |
| VISTA GALLERY            | DECK 4, MID  | 10:00 AM - 10:00 PM |
| WHITE CAPS               | DECK 3, FWD  | 9:30 AM - 11:00 PM  |
| WHOZITS & WHATZITS       | DECK 11, MID | 10:00 AM - 4:00 PM  |

## DINNER MENU

Animator's Palate : Captain's Gala  
Enchanted Garden : Captain's Gala  
Royal Court : Captain's Gala  
Dining Times: 5:45pm & 8:15pm

## DRINK OF THE DAY

High Tide (Alcoholic)  
Passion Cream Freeze (Non-Alcoholic)

## WEATHER FORECAST

Today: Sunny  
High: 76°F/24°C  
Tomorrow: Cloudy  
High: 62°F/17°C

Evening Attire: Semi Formal

## DINING & LOUNGES

### BREAKFAST

|                     |              |                    |
|---------------------|--------------|--------------------|
| CABANAS CONTINENTAL | DECK 11, AFT | 6:30 AM - 7:00 AM  |
| CABANAS             | DECK 11, AFT | 7:00 AM - 11:30 AM |
| ENCHANTED GARDEN    | DECK 2, MID  | 8:00 AM - 10:45 AM |
| ROYAL COURT         | DECK 3, MID  | 8:00 AM - 9:30 AM  |

### LUNCH

|                      |              |                     |
|----------------------|--------------|---------------------|
| CABANAS              | DECK 11, AFT | 11:30 AM - 2:00 PM  |
| FILLMORE'S FAVORITES | DECK 11, MID | 11:00 AM - 6:30 PM  |
| LUIGI'S PIZZA        | DECK 11, MID | 11:00 AM - 6:30 PM  |
| ROYAL COURT          | DECK 3, MID  | 12:00 PM - 1:30 PM  |
| TOW MATER'S GRILL    | DECK 11, MID | 11:00 AM - 11:00 PM |

### DINNER

|   |              |                   |
|---|--------------|-------------------|
| ANIMATOR'S PALATE                                 | DECK 3, AFT  | 5:45 PM & 8:15 PM |
| ENCHANTED GARDEN                                  | DECK 2, MID  | 5:45 PM & 8:15 PM |
| ROYAL COURT                                       | DECK 3, MID  | 5:45 PM & 8:15 PM |
| CABANAS TABLE SERVICE                             | DECK 11, AFT | 6:30 PM - 8:30 PM |
| PALO (18+) (RESERVATIONS REQ. & NOM. FEE APPLIES) | DECK 12, AFT | 6:00 PM - 8:30 PM |
| REMY (18+) (RESERVATIONS REQ. & NOM. FEE APPLIES) | DECK 12, AFT | 6:00 PM - 8:30 PM |

### LATE NIGHT SNACKS

|                 |              |                     |
|-----------------|--------------|---------------------|
| LA PIAZZA (18+) | DECK 4, AFT  | 10:45 PM - 11:45 PM |
| LUIGI'S PIZZA   | DECK 11, MID | 9:30 PM - 12:30 AM  |

### ADDED FEATURES

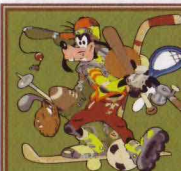
|                  |              |                     |
|------------------|--------------|---------------------|
| BEVERAGE STATION | DECK 11, MID | 24 HOURS            |
| EYE SCREAM       | DECK 11, MID | 11:00 AM - 11:00 PM |
| ROOM SERVICE     | DIAL 0       | 24 HOURS            |

### ENTERTAINMENT - LOUNGES - BARS

Adults must be 21 and older to consume alcoholic beverages.

|                                   |              |                     |
|-----------------------------------|--------------|---------------------|
| BON VOYAGE                        | DECK 3, MID  | 10:00 AM - 11:00 PM |
| COVE BAR (18+)                    | DECK 11, FWD | 10:00 AM - 11:00 PM |
| COVE CAFE (18+)                   | DECK 11, FWD | 7:00 AM - 12:00 AM  |
| CURRENTS (18+)                    | DECK 13, FWD | 10:00 AM - 11:00 PM |
| D LOUNGE                          | DECK 4, MID  | SHOWTIMES           |
| FROZONE TREATS                    | DECK 11, MID | 10:00 AM - 10:00 PM |
| LA PIAZZA (18+ AFTER 9:00 P.M.)   | DECK 4, AFT  | 12:00 PM - 12:00 AM |
| MERIDIAN (18+)                    | DECK 12, AFT | 10:00 AM - 12:00 AM |
| O'GILLS PUB (18+ AFTER 9:00 P.M.) | DECK 4, AFT  | 12:00 PM - 12:00 AM |
| O.O.H. LA LA (18+)                | DECK 4, AFT  | 5:30 PM - 12:00 AM  |
| OUTLOOK                           | DECK 14, MID |                     |
| SKYLINE (18+)                     | DECK 4, AFT  | 5:30 PM - 12:30 AM  |
| THE TUBE (18+ AFTER 9:00 P.M.)    | DECK 4, AFT  | 9:30 PM - 2:00 AM   |
| VISTA CAFE                        | DECK 4, MID  | 7:00 AM - 10:30 PM  |
| WAVES                             | DECK 12, AFT | 10:00 AM - 6:00 PM  |

Public Health Advisory: Consuming raw or under-cooked meats, poultry, seafood, shellfish, or eggs may increase your risk for food borne illness, especially if you have certain medical condition



## GOOFY'S SPORTS Digital Simulators

### Sports Simulator

(Basketball, Baseball, Hockey, Football or Soccer) \$12 / half hr, \$20 / hr

### Golf Simulator

\$25 / half hr, \$45 / hr

Reservations can be made at the Port Adventures Desk, Deck 5, Midship or at the Simulators, Deck 13, Aft.

## IMPORTANT NUMBERS

Fire/Security: 7-3001  
Medical Emergency: 7-3000  
Health Center: 7-1923