

PERSONAL NAVIGATOR



TUESDAY, MAY 12, 2015

Sunrise: 7:26 am Sunset: 8:29 pm
Evening Attire: Formal

Today: Partly Sunny High: 84°F/29°C
Tomorrow: Sunny High: 86°F/30°C

DAY AT SEA



**JOIN US AS THE
TALENTED CREW OF THE
DISNEY WONDER SHOWCASE
THEIR HIDDEN TALENTS!**

WALT DISNEY THEATRE

Deck 4, Forward

6:00 PM & 8:30 PM

As a courtesy to all Guests, we kindly advise that the saving of seats is not permitted in the Walt Disney Theatre.



Assistance available at the entrance to the Walt Disney Theatre 30 minutes prior to show time.

Disney WONDER Officers



Ugo Vaccalluzzo

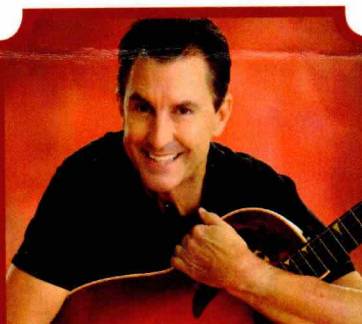
Hotel Director

Joined Disney Cruise Line: 2014

Hometown: Genoa, Italy

Favorite Character: Mowgli

Ugo completed his studies in Business Economics and commenced his career on the seas in 2001, having held positions in Food & Beverage, Guest Service Operations and Hotel Management with Festival Cruises, Silver Seas and Celebrity Cruise Line. Ugo recently joined Disney Cruise Line as Hotel Director gaining experience on board the Disney Dream, Disney Magic and most recently Disney Wonder.



ADULT VARIETY ACT

Featuring the Music & Comedy of John Charles, in this Adult exclusive cabaret style show.

**Walt Disney Theatre (18+),
Deck 4, Forward,
10:30 pm**

(Doors open 15 minutes prior)

Don't Miss:

The Panama Canal into the 21st Century featuring Captain Ken Puckett

Buena Vista Theatre, Deck 5, Aft - 9:30 am

Captain Puckett will discuss the reasons why the US turned the Canal operation over to Panama, the changes that have occurred since the turnover and the impact the New Canal will have on US and world commerce.

Steering Committee Hide & Seek - Round 2

Promenade Lounge, Deck 3, Aft - 11:00 am

Join the Disney Wonder Steering Committee for another fun game of hide 'n' seek.

Poolside Fun with Ryan & Ashleigh and Charles Peachock

Deck 9 Stage, Deck 9, Midship - 2:00 pm

Join our celebrity dancers Ryan and Ashleigh and juggler Charles Peachock for a poolside variety act that is sure to entertain.

Officers' Ball

Lobby Atrium, Deck 3, Midship - 7:30 pm

Captain Robert and his Officers cordially invite you to the Lobby Atrium for a wonderful evening of dance and socializing. Be sure to bring your dancing shoes. We look forward to sharing this evening with you!

Match Your Mate (18+)

WaveBands, Deck 3, Forward - 11:15 pm

It's time to play everyone's favorite couples game show - Match Your Mate!



TIME CHANGE Please remember to turn your clocks

BACK 1 HOUR upon retiring on **TUESDAY** evening

or first thing on **WEDNESDAY** morning.

DINNER MENU

Animator's Palate : Captains Gala
Parrot Cay : Captains Gala
Triton's : Captains Gala

DRINK OF THE DAY

Nautilus (Alcoholic)
Star Night (Non-Alcoholic)

IMPORTANT NUMBERS

Fire/Security: 7-3001
Medical Emergency: 7-3000
Health Center: 7-1923

ADULT ACTIVITY HIGHLIGHTS



VISTA SPA FITNESS CLASSES & SEMINARS

Sunrise Stretch - Vista Spa Fitness Center - 7:00 am
Ab Attack - Vista Spa Fitness Center - 8:00 am
Seminar - Improving Your Posture-Walk in Comfort - Outlook - 11:00 am
Seminar - How to Increase Your Metabolism - Outlook - 2:00 pm
Complimentary Footprint Analysis - Vista Spa Fitness Center - 4:00 pm
Pure Form Pilates - Vista Spa Fitness Center - 5:00 pm

TASTING CLASSES

Chocolate & Liquor Tasting (21+) - Cadillac Lounge - 12:15 pm
Patron Tequila Tasting (21+) - Cadillac Lounge - 2:00 pm
Mojito & Caipirinha Tasting (21+) - Cadillac Lounge - 4:00 pm
 Please make reservations for tastings at Guest Services for a nominal fee.
 Tasting Seminars are only for Guests 21 and older.

CLUB
18*21

CLUB 18*21 - COFFEE HOUR

Cove Cafe, Deck 9, Midship - 11:15 am
 Join your friends in Cove for coffee and a mingle.

CLUB 18*21 - BOARD GAME CHALLENGE

Diversions, Deck 3, Forward - 7:30 pm
 Join your friends and play some fun board games!

DISNEY'S ART OF ENTERTAINING: MUSHROOM RISOTTO

Studio Sea, Deck 4, Midship - 10:15 am
 Today we show you how to prepare Mushroom Risotto. Join us for an entertaining look at preparing this specialty. Recipes and tastings included.

CHUCK WAGNER PERFORMANCE

Cadillac Lounge, Deck 3, Forward - 9:30 pm
 Join us for a performance featuring the vocal talents of Disney Theatrical performer Chuck Wagner.

ADULT EXCLUSIVE OPEN HOUSE: ANIMATION CELLS

Edge, Deck 2, Midship - 11:00 pm
 Learn what it takes to be a Disney Animator, then put your new skills to the test as you create your very own animation cell.



FUN FOR ALL AGES HIGHLIGHTS

CRUISE DIRECTOR'S MORNING SHOW

Studio Sea, Deck 4, Midship - 8:30 am
 Get your day started with Cruise Director, Clayton and your Assistant Cruise Director, Lesley. Come be a part of the live studio audience or watch live on channel 25-8 and on Funnel Vision.

TODDLER TIME FOR FAMILIES

Captain's Closet, Disney's Oceaneer Club, Deck 5, Midship
 9:00 am - 11:00 am, 2:30 pm - 4:00 pm & 6:00 pm - 7:00 pm
 A time for Toddlers and their families to explore and play together.

ANNA'S CHOCOLATE CHASE SCAVENGER HUNT RIDDLES

Disney Wonder - 9:00 am - 11:00 pm

Clue 1 - You can sit in the dark any time of day, and on the screen moving pictures play!
Clue 2 - If you want to build a snowman, or play throughout the hall, visit the most fun place of them all!
Clue 3 - You'll need this clue to continue the game. Look for the pictures in the frames!

These are your 3 Clues for today.
 Look for your next 3 clues in tomorrow's Navigator.



ALL STAR JACKPOT BINGO

Bingo Pre-Sales start at 10:30 am
WaveBands, Deck 3, Forward - 10:45 am
 Four cash prizes and Disney Cruise Line raffle prizes too! Plus at this session only, Skipper Steve has invited some very special guest Bingo callers: Your Assistant Cruise Director, Lesley, and your Club Host, Andy. It's sure to be a hoot! Game 3 is free for all in attendance!



ANIMATION - OLAF

Animator's Palate, Deck 4, Aft - 1:15 pm
 Your Cruise Staff teach you how to draw one of your favorite Disney friends - Olaf.



CHIP-IT GOLF (12+)

Lobby Atrium, Deck 3, Midship - 2:00 pm
 It's par for the course for our Guests 12 and older to compete on our special "greens" in this fun tournament.

CRAFTS: ORIGAMI FAVORITES

Promenade Lounge, Deck 3, Aft - 2:30 pm
 Your Cruise Staff teaches you the ancient art of paper folding.

LIVE GUITAR WITH BERNIE GRIFFITH

Promenade Lounge, Deck 3, Aft - 5:15 pm, 7:30 pm & 9:45 pm
 Join Bernie Griffith as he plays guitar live for your listening pleasure.

\$10,000 MEGA JACKPOT BINGO

Bingo Pre-Sales start at 3:45 pm
WaveBands, Deck 3, Forward - 4:00 pm
 It's Big, it's Massive, it's Supersized! It's \$10,000 MEGA Jackpot Bingo! Take home \$10,000 if you can cover your card in 46 numbers or less. If not, we carry on to play for the biggest cash prize of the session. Pre-Sales start 15 minutes prior to game.



WONDER QUEST

WaveBands, Deck 3, Forward - 7:30 pm
 Enjoy the wildest and wackiest scavenger team event on the seven seas!

YOUTH ACTIVITIES HIGHLIGHTS

DINE & PLAY

A convenience for families dining at 8:15 pm, our Youth Activities counselors will be available at 9:15 pm at the entrance of Triton's, Parrot Cay and Animator's Palate dining rooms to bring registered children to join the fun in Disney's Oceaneer Club and Disney's Oceaneer Lab.



Deck 5, Aft (7-18500)

7:30 am - 11:00 pm

Infants and Toddlers can enjoy toys and activities at Flounder's Reef Nursery. Reservations are first come, first served so please stop by!



Deck 5, Midship (7-1440)

(3 - 12 years old)

9:00 am - 11:00 pm

ALOHA LUAU

10:30 am

It's party time, Hawaiian style! Come join us for a Luau experience and learn how to dance like Lilo & Stitch.

MAGIC SHOW

5:00 pm

The Magnificent Magician will demonstrate to you some of the best known magic tricks on the sea.



Deck 5, Midship (7-1445)

(3 - 12 years old)

9:00 am - 12:00 am

ANIMATION ANTICS

9:15 am

Learn simple animation techniques and then put your new skills to use by drawing some of your favorite Disney Characters.

LAVA FLOW

10:30 am

Build your own volcano and watch it erupt as you learn about the physics of volcanoes.



Deck 2, Midship (7-5810)

(11 - 14 years old)

10:00 am - 11:00 pm

SCAVENGER HUNT

2:45 pm

A little friendly competition exploring the ship; see if you can solve the clues and finish first.

MARSHMALLOW OLYMPICS

5:00 pm

Learn all about this white sugary treat and everything it can do! Build a tower, go flying and test your agility - all with the help of a marshmallow.



Deck 11, Midship (7-1456)

(14 - 17 years old)

11:00 am - 2:00 am

ICE CREAM SOCIAL

12:00 pm

I scream, you scream, we all scream for ice cream! Make your own frosty treat with your Counselors.

GAME CHALLENGE

9:15 pm

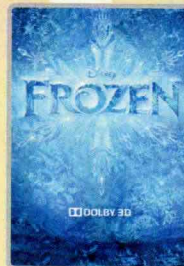
Come have some fun with these classic games

BUENA VISTA THEATRE

Deck 5, Aft

Today's Movies

DOLBY 3D

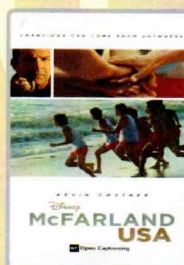


11:00 am

Duration: 1 hr 48 mins

Rating: PG

Open Captioning



5:00 pm & 8:00 pm

Duration: 2 hrs 9 mins

Rating: PG



2:00 pm

Duration: 2 hrs 38 mins

Rating: PG-13



10:30 pm

Duration: 2 hrs 22 mins

Rating: PG-13



FAMILY PARTY

A Pixar Pals Party!
Join your favorite
Pixar characters for the
ultimate dance party.

Lobby Atrium,
Deck 3, Midship,
3:00 pm



ADULT GAME SHOW

It's time to play
everyone's favorite couple's
game show,
Match your Mate!

Wavebands (18+),
Deck 3, Forward,
11:15 pm

YOUTH ACTIVITIES OPEN HOUSE

Open House is an opportunity for all to come and participate in a variety of exciting activities and free time in the Oceaneer Club, Oceaneer Lab, Flounder's Reef Nursery, Vibe and Edge throughout the cruise. During these times secured programming will still be offered in the other venue for those looking to check their children into care.

Disney's Oceaneer Club: 12:30 pm - 1:30 pm & 6:00 pm - 7:00 pm

MORE TO ENJOY WHILE ONBOARD

MORE MAGIC IN EUROPE



Set sail for Europe! Travel with Disney Cruise Line to the Mediterranean - a region that conjures up a romantic past. Home to some of the world's oldest civilizations, trade routes and cultures, this region offers a diverse blend of cities and cultures. Sail to such countries as Italy, France, Spain and Portugal. Begin your adventure today! Visit the Onboard Sales Desk for more information.



DISNEY VACATION CLUB® GROUP PREVIEW

Want to learn more about taking magical vacations year after year? Please see a Disney Vacation Club representative on Deck 4, Midship, or call 7-2805 from your stateroom phone for more information about our interactive group presentation.



PORT AND SHOPPING INFORMATION

For all of your Cabo San Lucas Port and Shopping Information, don't forget to visit the Port Shopping Desk tonight between 7:30 pm - 8:30 pm on Deck 3, Midship.

Connect@Sea

We are now offering a NEW and improved Internet service to stay connected on your cruise like no other in the industry! Internet packages range from \$0.25 per MB - \$89.00 (1000 MB package). For more information contact your Connect@Sea Expert or Guest Services onboard.

QUARTER MASTERS ARCADE

Ever dreamed of flying high in the Sky? On After Burner feel the adrenaline while you are a Pilot traveling on a turbulence adventure, in the exclusive Quarter Masters Arcade, located on Deck 9, Midship.

EARLY FLIGHT DEPARTURES

Guests with flights departing prior to 12:00 pm are kindly asked to notify Guest Services located on Deck 3, Midship, no later than 12:00 midday on the final day of the cruise.



SALON TASTER

Choose from: scalp massage, neck and shoulder massage, mini facial, eye collagen treatment, arm and hand massage, hair conditioning treatment, foot and ankle massage, sunglow makeover
3 for \$99 5 for \$119 all 8 for \$139
(plus 18% auto gratuity)



The best way to explore our ports of call is through the eyes of a Port Adventure. Cabo San Lucas awaits our much anticipated arrival. Stop by the Port Adventures Desk, Deck 3, Midship, to book one of our many tours still available.

SHOPPING

H2O SPA PRODUCTS SPECIAL PROMOTION

Restore moisture and softness with marine-rich formulas from H2O Plus. Swing by Treasure Ketch and receive a complimentary gift with your purchase of \$50.00 or more of H2O Plus Spa products, while supplies last. Deck 4, Forward.

CINDERELLA INSPIRED SWAROVSKI

Created from high-quality sparkling crystal, Swarovski produces elegant and brilliant designs such as the Disney-inspired figurines and jewelry collections available in Treasure Ketch, Deck 4, Forward. Here, fans of the new live-action Disney film Cinderella can now find the new Swarovski jewelry collection inspired by the popular film.

FREEZING THE NIGHT AWAY

Head to the onboard shops on Deck 4, Forward, where you'll find everything you need for the Freezing the Night Away deck party tomorrow night. Discover the specially designed trendy apparel for everyone in the family and featuring some of your favorite Disney Frozen friends.

CRUISE IN STYLE WITH GUESS ACCESSORIES

Head to Treasure Ketch for the ultimate destination of fashionable brand name accessories such as Guess watches, sunglasses, and handbags. Discover the elegant men's and women's watches paired with two-tone, silver, gold, and black-colored bands, with selected styles sparkling with Swarovski crystals. Compliment your style with one of the various handbags available, adorned with the iconic Guess logo. Top off your look with a pair of stylish sunglasses and you're ready for day at the port! Treasure Ketch, Deck 4 Forward.

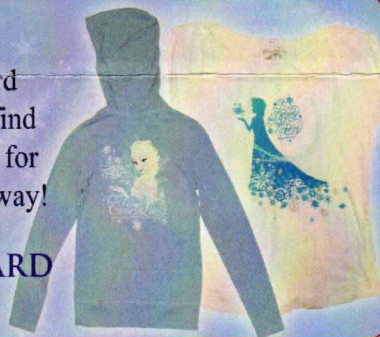
ARTWORK BY LORELAY BOVE AT THE VISTA GALLERY

Coming from a strong artistic background, Lorelay Bove quickly made her mark in the art world with her signature style. Currently a part of the Walt Disney Animation Studios team as a Visual Development Artist, Lorelay's artwork charmingly interprets some of your favorite Disney movie scenes. Stop by the Vista Gallery today to view original pieces by this talented artist as well as from many others as part of the featured Disney Storytellers series. Deck 4, Midship.

Due to port regulations, when the ship is docked, the stores will remain closed.

Head to the onboard shops where you'll find everything you need for Freezing the Night Away!

DECK 4, FORWARD



GET THE PICTURE!

Use our kiosks to purchase your Get the Picture! photo disc and share your vacation memories digitally! No need to decide which photos to take home now, select your photos from the comfort of your home. Kiosks are located in Shutters Deck 4, Aft and Deck 3, next to the Promenade Lounge.

**Offer valid per stateroom only. Terms and conditions apply.
Photos captured on your vacation are only available for purchase during this cruise.*

IMPORTANT INFORMATION

Security Notice

All Guests (including Children) who wish to disembark or embark the ship are required to present their Key to the World card at the gangway. A photo ID is also required for those Guests who are 18 years of age or older. Guests under the age of 18 are required to have a parent, guardian or other responsible adult sign an authorization form at the Guest Service Desk if they wish to go ashore unaccompanied or with any adult from another stateroom.

Sunscreen/Insect Repellent Advisory

Use sunscreen first and protect against mosquito bites and related illnesses by applying insect repellent on top of sunscreen when going ashore. Insect repellent is available for purchase in Treasure Ketch.

Cold and Flu Reminder

Please wash hands frequently and thoroughly, particularly before meals. Contact the Health Center by dialing 7-1923, should anyone in your party become ill.

Inclement Weather

For the safety of all Guests, outdoor events may be changed due to unforeseen weather conditions.

Corridor Quiet Hours

As a courtesy to all our Guests, please recognize quiet hallway hours from 10:00 pm til 8:00 am.

Environmental Message

With Disney's commitment to the Environment please refrain from throwing anything over the Ship's side. Thank you.

No Reserved Seats Policy

As a courtesy to all Guests we kindly advise that the saving of seats is not permitted in the Walt Disney Theatre, and the saving of the sun loungers is not permitted on Deck 9 and 10. Items left unattended will be returned to lost and found at Guest Services, Deck 3, Midship.

Smoking

For the comfort of our guests, the following areas are designated as smoking areas:

- Deck 10, forward, Starboard side
- Deck 9, forward, Starboard side at Quiet Cove
- Deck 4, aft, starboard side from 6:00 pm to 6:00 am only (all of Deck 4 is non-smoking from 6:00 am to 6:00 pm.)

Smoking is prohibited inside all guest staterooms and on stateroom verandahs. Guests found smoking in their staterooms or on their verandahs will be charged a \$250 stateroom recovery fee.

Electronic cigarettes may only be used in designated smoking areas.












Walt Disney Theatre



Theatrical performances may use artificial fog, strobe lights, pyrotechnics and other special effects. For the safety of our performers and the comfort of those around you, the use of any photography or video recording device or any electronic equipment is prohibited.

Verandah Safety

Please do not leave any combustible materials on your balcony when not present in your stateroom for safety reasons.

Morning	8:30	8:45	9:00	9:15	9:30	9:45	10:00	10:15	10:30	10:45	11:00	11:15	11:30	11:45	12:00	12:15	12:30	12:45	1:00	1:15	1:30		
FUNNEL VISION	Cruise Director's Morning Show Studio Sea													Pirates of the Caribbean: At World's End (PG-13) Funnel Vision									
BUENA VISTA THEATRE						Captain Ken Puckett Presentation					Frozen (PG) DOLBY 3D Duration: 1 Hour 48 Minutes												
CHARACTERS		Chip & Dale Gazebo		Pluto Gazebo			Olaf Animator's Palate											Mickey & Friends Lobby Atrium					
			Olaf Animator's Palate	Suzy & Perla DK4 Mid (S)																			
FUN FOR ALL AGES	Cruise Director's Morning Show Studio Sea	Wake Up and Wiggle Promenade Lounge		The Panama Canal into the 21st Century with Captain Ken Puckett Buena Vista Theatre				Bingo Pre-Sales	All Star Jackpot WaveBands			Crafts: Rubber Duck Decorating Animator's Palate			Studio Sea - Group Preview		Line Dance Class WaveBands						
								Crafts: 3D Crafts Promenade Lounge									Animation - Olaf Animator's Palate						
		Toddler Time Captain's Closet, Disney's Oceaneer Club						Foosball Wide World of Sports Deck	Steering Committee Hide & Seek Promenade Lounge					Youth Activities Open House Disney's Oceaneer Club									
ADULTS	Friends of Bill W. Outlook Cafe	Walk A Mile Dk 4, Fwd Elevators					Disney's Art of Entertaining: Mushroom Risotto Studio Sea				Club 18*21 - Coffee Hour Cove Cafe				Chocolate & Liquor Tasting (21+) Cadillac Lounge								
									Seminar: Walk In Comfort Outlook					Cruise Staff Lunch Triton's									
VIBE 14-17 YEARS OLD											Youth Activities Open House				Ice Cream Social				Matinee Movie				
EDGE 11-14 YEARS OLD						Youth Activities Open House												Matinee Movie					
OCEANEER LAB 3-12 YEARS OLD				Animation Antics					Lava Flow				Bingo				Lunch						
OCEANEER CLUB 3-12 YEARS OLD				A to Z Scavenger Hunt						Aloha Luau				4 Square Competition		Youth Activities Open House							
																			Lunch				

Afternoon	1:45	2:00	2:15	2:30	2:45	3:00	3:15	3:30	3:45	4:00	4:15	4:30	4:45	5:00	5:15	5:30	5:45	6:00	6:15	6:30	6:45		
FUNNEL VISION		Ryan & Ashleigh and Charles Peachcock LIVE Deck 9, Stage					The Emperor's New Groove (G) Funnel Vision										Brother Bear (G) Funnel Vision						
BUENA VISTA THEATRE		Les Miserables (PG-13) Duration: 2 Hours 38 Minutes										McFarland, USA (PG) Open Captioning Duration: 2 Hours 9 Minutes											
CHARACTERS																							
FUN FOR ALL AGES						 Lobby Atrium			Bingo Pre Sales	\$10,000 Mega Jackpot  WaveBands				Classic Jazz with Fine Whines Lobby Atrium			 Walt Disney Theatre						
		Lobby Atrium (12+)		Crafts: Origami Favorites Promenade Lounge					Toddler Time for Families Captain's Closet, Disney's Oceaneer Club		Basketball 3-on-3 Wide World of Sports Deck		Live Guitar with Bernie Griffith Promenade Lounge										
ADULTS	Sports Trivia Diversions		Informal Bridge Play Diversions			Obscurity Trivia Diversions			Mojito & Caipirinha Tasting (21+) Cadillac Lounge			Walk A Mile Dk 4, Fwd Elevators											
	Patron Tequila Tasting (21+) Cadillac Lounge						Live Guitar with Bernie Griffith Quiet Cove Pool					Pure Form Pilates Vista Spa Fitness Center											
VIBE 14-17 YEARS OLD	Matinee Movie										Youth Activities Open House												
EDGE 11-14 YEARS OLD	Matinee Movie			Scavenger Hunt						Homework Help			Marshmallow Olympics			Youth Activities Open House 							
OCEANEER LAB 3-12 YEARS OLD	Pinata Party 								GAGA Ball 								Youth Activities Open House 						
OCEANEER CLUB 3-12 YEARS OLD	Little Einstein's Adventure 					Aladdin's Fun Adventures 										Dinner							

Evening	7:00	7:15	7:30	7:45	8:00	8:15	8:30	8:45	9:00	9:15	9:30	9:45	10:00	10:15	10:30	10:45	11:00	11:15	11:30	11:45	12:00	
FUNNEL VISION				Virtual Tours Funnel Vision																		
BUENA VISTA THEATRE					McFarland, USA (PG) Open Captioning Duration: 2 Hours 9 Minutes										Avengers: Age of Ultron (PG-13) Duration: 2 Hours 22 Minutes							
CHARACTERS				Goofy & Pluto Preludes								Mickey & Pluto Lobby Atrium (P)				Donald, Daisy Lobby Atrium (P)						
FUN FOR ALL AGES		Pin Trading Mickey's Mates	Officers' Ball Lobby Atrium			 Walt Disney Theatre					 Studio Sea											
			Wonder Quest WaveBands															Live Guitar with Bernie Griffith Promenade Lounge				
ADULTS				Music & Martinis with Tim Moss Cadillac Lounge								Cruise Staff DJ WaveBands			The Comedy & Music of JOHN CHARLES Walt Disney Theatre				Match Your Mate WaveBands			
				Club 18*21 - Board Game Challenge Diversions								Chuck Wagner Performance Cadillac Lounge					Adult Exclusive Open House					
VIBE 14-17 YEARS OLD	Animation Cells						Smoothie Time				Game Challenge				Trivia Challenge		Crowning of the Couch Potato		Pajamarama Movie Night			
EDGE 11-14 YEARS OLD	Youth Activities Open House				Disney Infinity				Ninja				Gender Wars				Adult Exclusive Open House					
OCEANEER LAB 3-12 YEARS OLD	Youth Activities Open House												Eggsperiments									
OCEANEER CLUB 3-12 YEARS OLD			Talent Show				Scavenger Hunt						Wacky Relays									

Symbol for activities that will be repeated during the cruise



Fold along the dotted lines and take me with you so you don't miss any of the fun!

FOLD

IN THE SPOTLIGHT SERIES
ROCK IT! SERIES
JUMP UP! SERIES
CREATE & INVENT SERIES
OPEN HOUSE
CLUBHOUSE SERIES
STORYBOOK SERIES

TUESDAY, MAY 12, 2015 - DAY AT SEA

BUENA VISTA THEATRE

Deck 5, Aft

DOLBY 3D

Open Captioning



11:00 am
Duration:
1 hr 48 mins
Rating: PG



2:00 pm
Duration:
2 hrs 38 mins
Rating: PG-13



5:00 pm & 8:00 pm
Duration:
2 hrs 9 mins
Rating: PG



10:30 pm
Duration:
2 hrs 22 mins
Rating: PG-13

Character Appearances

CHIP & DALE
Gazebo - 8:45 am

OLAF
Animator's Palate
9:00 am & 10:00 am

PLUTO
Gazebo - 9:15 am

SUZY & PERLA
DK4 Mid (S) - 9:15 am

MICKEY & FRIENDS
Lobby Atrium - 12:30 pm

A PIXAR PALS PARTY!
Lobby Atrium - 3:00 pm

GOOFY & PLUTO
Preludes - 7:45 pm

MICKEY & PLUTO
Lobby Atrium (P)
9:30 pm

DONALD & DAISY
Lobby Atrium (P)
10:00 pm



(P) - Port Side (S) - Starboard Side

Don't forget your Camera to capture those Magical Moments!
Check here each day for all of today's Character Appearances or refer to the
Character Board in the Lobby Atrium.

Meet-and-Greets will be advertised for the length of time the line will be
open. To avoid disappointment, please meet at start time of appearances.

SHIP DIRECTORY

YOUTH ACTIVITIES

DISNEY'S OCEANEER CLUB	DECK 5, MID	9:00 AM - 11:00 PM
DISNEY'S OCEANEER LAB	DECK 5, MID	9:00 AM - 12:00 AM
EDGE	DECK 2, MID	10:00 AM - 11:00 PM
VIBE	DECK 11, MID	11:00 AM - 2:00 AM
FLOUNDER'S REEF NURSERY	DECK 5, AFT	7:30 AM - 11:00 PM

POOLS

Children under 12 years of age must have adult supervision in all pools.

GOOFY'S POOL	DECK 9, MID	9:00 AM - 6:00 PM
		8:00 PM - 10:00 PM
MICKEY'S POOL	DECK 9, AFT	8:30 AM - 10:00 PM
MICKEY'S SLIDE	DECK 9, AFT	1:00 PM - 5:30 PM
MICKEY'S SPLASH ZONE	DECK 9, AFT	
QUIET COVE POOL (18+)	DECK 9, FWD	8:00 AM - 11:00 PM

Complimentary pool vests are available for children to use in the pools onboard.
They are located on the pool deck

RECREATION

PORT ADVENTURES DESK	DECK 3, MID	7:00 AM - 10:00 AM
		7:00 PM - 8:30 PM
VISTA FITNESS CENTER (18+)	DECK 9, FWD	6:00 AM - 10:00 PM
WIDE WORLD OF SPORTS DECK	DECK 10, FWD	- 24 HOURS

GENERAL INFORMATION

BUENA VISTA THEATRE	DECK 5, AFT	SHOWTIMES
DISNEY VACATION CLUB DESK	DECK 4, MID	10:00 AM - 12:00 PM
		2:30 PM - 10:00 PM
FUNNEL VISION	DECK 9, MID	SHOWTIMES
GUEST SERVICES	DECK 3, MID	24 HOURS
HAIR BRAIDING	DECK 9, MID	4:00 PM - 7:00 PM
MEDICAL HEALTH CENTER	DECK 1, FWD	9:30 AM - 11:00 AM
		4:30 PM - 7:00 PM
ONBOARD SALES DESK	DECK 4, MID	9:00 AM - 6:00 PM
		7:30 PM - 10:00 PM
PORT & SHOPPING DESK	DECK 3, MID	7:30 PM - 8:30 PM
PRELUDES	DECK 4, FWD	5:30 PM - 9:00 PM
QUARTER MASTERS (ARCADE)	DECK 9, MID	24 HOURS
SHUTTERS PHOTO GALLERY	DECK 4, AFT	4:30 PM - 11:00 PM
VISTA SPA AND SALON	DECK 9, FWD	8:00 AM - 10:00 PM
WALT DISNEY THEATRE	DECK 4, FWD	SHOWTIMES

SHOPPING

ART GALLERY	DECK 4, MID	1:00 PM - 4:00 PM
		7:00 PM - 9:00 PM
MICKEY'S MATES	DECK 4, FWD	9:00 AM - 10:30 PM
RADAR TRAP (DUTY FREE)	DECK 3, FWD	6:00 PM - 10:30 PM
TREASURE KETCH	DECK 4, FWD	9:00 AM - 10:30 PM

TIME ZONE CHANGE

Remember to turn your clocks **BACK 1 HOUR**
upon retiring on **TUESDAY** evening,
or first thing **WEDNESDAY** morning.



IMPORTANT NUMBERS

Fire/Security: 7-3001
Medical EMERGENCY: 7-3000
Health Center: 7-1923

DINNER MENU

Animator's Palate : Captains Gala
Parrot Cay : Captains Gala
Triton's : Captains Gala

Dining Times: 5:45pm & 8:15pm

DRINK OF THE DAY

Nautilus
(Alcoholic)
Star Night
(Non-Alcoholic)

WEATHER FORECAST

Today: Partly Sunny
High: 84°F/29°C
Tomorrow: Sunny
High: 86°F/30°C

Evening Attire: Formal

DINING & LOUNGES

BREAKFAST

BEACH BLANKET BUFFET	DECK 9, AFT	7:30 AM - 10:30 AM
GOOFY'S GALLEY	DECK 9, AFT	7:00 AM - 9:00 AM
PARROT CAY	DECK 3, AFT	8:30 AM - 10:45 AM
TRITON'S (A-LA CARTE)	DECK 3, MID	8:00 AM - 9:30 AM

LUNCH

BEACH BLANKET BUFFET	DECK 9, AFT	12:00 PM - 2:00 PM
GOOFY'S GALLEY	DECK 9, AFT	10:30 AM - 6:00 PM
PARROT CAY	DECK 3, AFT	12:15 PM - 1:30 PM
PALO BRUNCH (18+)	DECK 10, AFT	10:00 AM - 12:30 PM
PINOCCHIO'S PIZZERIA	DECK 9, MID	10:45 AM - 6:00 PM
PLUTO'S DOG HOUSE	DECK 9, AFT	10:45 AM - 6:00 PM
TRITON'S	DECK 3, MID	12:00 PM - 1:30 PM

DINNER

ANIMATOR'S PALATE	DECK 4, AFT	5:45 PM & 8:15 PM
BEACH BLANKET (A-LA CARTE)	DECK 9, AFT	6:30 PM - 8:30 PM
PARROT CAY	DECK 3, AFT	5:45 PM & 8:15 PM
TRITON'S	DECK 3, MID	5:45 PM
PALO (18+)	DECK 10, AFT	6:00 PM - 8:30 PM
PLUTO'S DOG HOUSE	DECK 9, AFT	6:00 PM - 9:30 PM

LATE NIGHT SNACKS

TRITON'S CHOCOLATE GALA BUFFET	DECK 3, MID	11:00 PM - 11:30 PM
DIVERSIONS	DECK 3, FWD	11:00 PM - 12:00 AM
PINOCCHIO'S PIZZERIA	DECK 9, MID	9:30 PM - 12:00 AM
PROMENADE LOUNGE	DECK 3, AFT	11:00 PM - 12:00 AM

ADDED FEATURES

BEVERAGE STATION	DECK 9, AFT, PORT SIDE	24 HOURS
ICE CREAM AT GOOFY'S GALLEY	DECK 9, AFT	10:30 AM - 12:00 AM
ROOM SERVICE	DIAL 6801 OR 6802	24 HOURS

ENTERTAINMENT - LOUNGES - BARS

Adults must be 21 and older to consume alcoholic beverages.

CADILLAC LOUNGE (18+)	DECK 3, FWD	6:00 PM - 12:00 AM
COVE CAFE (18+)	DECK 9, MID	6:30 AM - 12:00 AM
DIVERSIONS (18+ AFTER 9:00 PM)	DECK 3, FWD	12:00 PM - 12:00 AM
INTERNET CAFE	DECK 3, AFT	24 HOURS
OUTLOOK CAFE (18+)	DECK 10, MID	8:00 AM - 12:00 AM
PINOCCHIO'S PIZZERIA	DECK 9, MID	9:00 AM - 12:00 AM
PLUTO'S DOG HOUSE	DECK 9, AFT	10:45 AM - 6:00 PM
PRELUDES	DECK 4, FWD	5:30 PM - 9:00 PM
PROMENADE LOUNGE	DECK 3, AFT	8:00 AM - 12:00 AM
SIGNALS (18+)	DECK 9, FWD	9:00 AM - 11:00 PM
STUDIO SEA	DECK 4, MID	SHOWTIMES
WAVEBANDS (18+)	DECK 3, FWD	7:30 PM - 2:00 AM

Public Health Advisory: Consuming raw or under-cooked meats, poultry, seafood, shellfish, or eggs
may increase your risk for food borne illness, especially if you have certain medical conditions.