

PERSONAL NAVIGATOR

Sunrise 7:04 am Sunset: 7:59 pm
Evening Attire: Formal

Today: Partly Sunny High: 78°F/26°C
Tomorrow: Partly Sunny High: 82°F/28°C

TUESDAY, APRIL 28, 2015

DAY AT SEA

TWICE CHARMED

AN ORIGINAL TWIST ON THE CINDERELLA STORY

STEP BACK IN TIME TO EXPERIENCE THE STORY OF CINDERELLA IN A MAGICAL NEW WAY. ENJOY THIS MAGNIFICENT MUSICAL PRODUCTION WITH YOUR FAVORITE CHARACTERS - AND A FEW NEW ONES!

WALT DISNEY THEATRE

Deck 4, Forward
6:15 pm & 8:30 pm

As a courtesy to all Guests, we kindly advise that the saving of seats is **not** permitted in the Walt Disney Theatre.



Assistance available at the entrance to the Walt Disney Theatre 30 minutes prior to show time.



Disney MAGIC Fun Facts

Tonnage: 84,000
Length Overall: 984 Feet
Ship's Registry: *The Bahamas*

Important Dates

Keel Laid: *October 31, 1996*
Launch Date: *April 12, 1997*
Inaugural Cruise: *July 30, 1998*

- The Magic was built by a process called Jumboisation (in 2 separate sections) in Italy at the Fincantieri Maghera Shipyard (stern) and the Fincantieri Ancona Shipyard (bow). The joint of the ship is just in front of Lumiere's.
- The anchor of the Disney Magic weighs 28,200 lbs (12,802.8kg) - the same weight as three elephants.
- Over 50 nationalities make up the 960 Crew Members on board.
- Sorcerer Mickey stands proudly 10 ft tall on the bow of the ship. There are other characters in the artwork around him.
- Goofy hangs 20 ft tall, painting the finishing touches on the stern.



CAPTAIN'S RECEPTION

Enjoy an exclusive photo with Captain John & meet some of the ships officers.
With live music provided by The Dreamers.

Lobby Atrium,
Deck 3, Midship,
5:15 pm & 7:30 pm

Don't Miss:

Jack-Jack's Incredible Diaper Dash

Lobby Atrium, Deck 3, Midship - 11:30 am
Calling all baby cruisers! It's time to take to the mat to see who's the fastest crawler of the seven seas! Register your baby 15 minutes prior to the big race.

Showtime: Ice! Fire! Strings! featuring Greta Salome

Walt Disney Theatre, Deck 4, Forward - 1:45 pm
International recording artist Greta Salomé presents a thrilling show you will never forget...Ice! Fire! Strings! Ice! Fire! Strings! is a truly unique event for the whole family that will take you on a magical journey of music and dance, including music from Disney Pixar's BRAVE, and then a surprise grand finale that will be "FROZEN" in your minds.



TIME ZONE CHANGE

Remember to turn your clocks **BACK 1 HOUR** upon retiring on **TUESDAY** evening, or first thing **WEDNESDAY** morning.



Visit the Onboard Sales Desk Early Today

Please visit the Onboard Sales desk, Deck 4, Midship, as early as possible today. The last day of the cruise tends to get busy in the evening, and we want to be sure you have the opportunity to save 10% on your next cruise, receive up to a \$200 onboard credit, and pay a reduced deposit.

DINNER MENU

Animator's Palate : Pacific Rim Cuisine
Carioca's : South American Cuisine
Lumiere's : French Cuisine

DRINK OF THE DAY

Deep Blue Sea (Alcoholic)
Mango Crush (Non-Alcoholic)

IMPORTANT NUMBERS

Fire/Security: 7-3001
Medical Emergency: 7-3000
Health Center: 7-1923

ADULT ACTIVITY HIGHLIGHTS

SENSES SPA FITNESS CLASSES & SEMINARS

Sunrise Stretch - Senses Spa Fitness Center - 7:00 am
Fab Abs - Senses Spa Fitness Center - 7:30 am
Body Sculpt Boot Camp (Nom. Fee) - Senses Spa Fitness Center - 9:00 am
Introduction to Acupuncture - Keys - 10:00 am
Ultimate Hair Cut Seminar - Senses Spa Fitness Center - 10:30 am
Secrets to a Flatter Stomach - Senses Spa Fitness Center - 11:00 am
Pamper Party - Senses Spa Fitness Center - 12:00 pm
Acupuncture Pain Relief - Senses Spa Fitness Center - 2:00 pm
Seminar: Improving Your Posture-Walk in Comfort - Senses Spa Fitness Center - 3:00 pm
Group Cycling - Senses Spa Fitness Center - 4:00 pm
Pilates - Senses Spa Fitness Center - 5:00 pm



TASTING CLASSES

Stem to Stern Wine Tasting (21+) - Keys - 12:00 pm
Whiskey Tasting (21+) - Cove Cafe - 10:30 pm
 Please make reservations for tastings at Guest Services for a nominal fee.
 Tasting Seminars are only for Guests 21 and older.

CLUB 18*21 - LUNCH

Lumiere's, Deck 3, Midship - 12:00 pm
 Get to know your fellow 18*21 Guests over a spot of lunch.

CLUB 18*21 - XBOX DISNEY INFINITY

O'Gills Pub, Deck 3, Forward - 5:15 pm
 Get creative and build magical worlds of wonder as one of your favorite Disney characters in Disney's Infinity.

CLUB 18*21 - MIXER

Fathoms, Deck 3, Forward - 10:00 pm
 Come join fellow cruisers your own age at our exclusive Club 18*21 event.

ART OF THE THEME SHOW TOUR

Palo, Deck 10, Aft - 9:15 am & 3:15 pm
 Join us on a guided ship tour and discover the key ingredients that make the Disney Magic.

DISNEY INNOVATIONS: ANIMATION

O'Gills Pub, Deck 3, Forward - 10:45 am
 Join us for our presentation showing the "Top 10" greatest innovations that the Walt Disney Company has introduced to the field of Animation.

ANYONE CAN COOK - APPLE STRUDEL

D Lounge, Deck 4, Midship - 2:30 pm
 From our galley to yours. Join our chefs as they show you how to prepare delicious dishes.
 Today's Menu - Apple Strudel

80'S/90'S REMIX WITH CRUISE STAFF DJ

Fathoms, Deck 3, Forward - 10:45 pm
 Join your Cruise Staff DJ as they spin the tunes and remix the 80's and 90's!



FUN FOR ALL AGES HIGHLIGHTS

WAKE UP WITH DISNEY JUNIOR

D Lounge, Deck 4, Midship - 8:30 am
 What happens when you experience unlimited fun with your favorite Disney Junior shows? You get an exciting dance party designed especially for preschoolers ages seven and under.



FAMILY FUN JACKPOT BINGO

Bingo Pre-Sales start at 10:30 am
Fathoms, Deck 3, Forward - 10:45 am
 Join your Cruise Staff as we play 4 cash prize games as well as raffle off great Disney Cruise Line prizes! Also, don't miss your chance to win a Sophia Fiori 5 Carat Midnight Sapphire. Pre-Sales start 15 minutes prior to game.



JACK-JACK'S INCREDIBLE DIAPER DASH

Lobby Atrium, Deck 3, Midship - 11:30 am
 Calling all baby cruisers! It's time to take to the mat to see who's the fastest crawler of the seven seas! Register your baby 15 minutes prior to the big race.



DISNEY MOVIE CHALLENGE POOLSIDE

Deck Stage, Deck 9, Midship - 12:15 pm
 So you like movies? And you like bingo? This deck party has them both! Come on out to watch all your favorite movie clips and just maybe your team will win the opportunity to choose the movie played by the pool today!



DISNEY VACATION CLUB GROUP PREVIEW

D Lounge, Deck 4, Midship - 12:30 pm
 Want to learn more about taking magical vacations year after year? Please see a Disney Vacation Club representative on Deck 4, Midship, or call 7-2805 from your stateroom phone for more information about our interactive group presentation.



MICKEY 200

Fathoms, Deck 3, Forward - 12:45 pm
 Don't eat your vegetables... race them in this wild and wacky charge to the finish line. May the best veggie win! (Limited Availability)



DIAMOND, GEMSTONE & WATCH SEMINAR

Promenade Lounge, Deck 3, Aft - 3:30 pm
 Join your Port Shopping Guides to become an educated shopper. Learn essential tips on buying Diamonds & exotic gemstones in the Caribbean. Also discover where to find the hottest watches in our ports of call.

\$5,000 MEGA JACKPOT BINGO

Bingo Pre-Sales start at 3:45 pm
Fathoms, Deck 3, Forward - 4:00 pm
 Don't miss your chance to take home big money! 4 CASH prize games and great raffle prizes to be won! Complete the fourth game in 46 numbers or less and win the \$5,000 Mega Jackpot! Pre-Sales start 15 minutes prior to game.



DISNEY JUNIOR PIRATE & PRINCESS DANCE PARTY

D Lounge, Deck 4, Midship - 4:45 pm
 Calling all Pirates and Princesses! Come join us for a family dance party featuring music and fun activities from Jake & the Neverland Pirates and Sofia the First. Whether you favor tiaras or treasure chests, there's something for you at our Disney Junior Pirate & Princess Dance Party!



FORMAL NIGHT AFTER PARTY

D Lounge, Deck 4, Midship - 9:45 pm
 Join your Cruise Staff as we continue the party, with special appearances from the world famous Disney Characters.

YOUTH ACTIVITIES HIGHLIGHTS

DINE & PLAY

As a convenience for families dining at 8:15 pm, our Youth Activities Counselors will be available at 9:15 pm at the entrance of Lumiere's and Carioca's and at 9:30 pm at the entrance of Animator's Palate to bring registered children to join the fun in Disney's Oceaneer Club and Disney's Oceaneer Lab.



Deck 5, Aft (7-5864) 9:00 am - 11:00 pm

Infants and Toddlers can enjoy toys and activities at It's a small world nursery. Reservations are first come, first served so please stop by!



Deck 5, Midship (7-1439) 9:00 am - 12:00 am
(3-12 years old)

ALOHA LUAU

11:30 am

It's party time, Hawaiian style! Come join us for a Luau experience and learn how to dance like Lilo & Stitch.

MOUSEKETEER TRAINING

2:00 pm

Take part in training exercises to become an Official Mouseketeer.



Deck 5, Midship (7-1445) 9:00 am - 12:00 am
(3-12 years old)

SUPER SLOPPY SCIENCE

10:00 am

Join Professor Make-O-Mess in some of the most extreme experiments you will ever see in the world of Super Sloppy Science!

ANYONE CAN COOK

3:30 pm

Anyone can cook as we work together to create some of our favorite treats.



Deck 2, Midship (7-5816) 10:00 am - 1:00 am
(11-14 years old)

GOOFY'S WORLD RECORDS

11:15 am

Compete in the Goofy-est games ever! Goofy and his pals have created a variety of games and contests for a wild time.

ICE CREAM SOCIAL

4:00 pm

I scream, you scream, we all scream for ice cream! Make your own frosty treat with your Counselors.



Deck 10, Midship (7-18517) 10:30 am - 2:00 am
(14-17 years old)

GENDER WARS

12:00 pm

Join us as we find out who really are the kings or queens of the castle.

ZOMBIFIED

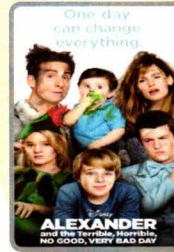
2:00 pm

A big movie producer is looking for zombies to help him film the finale to his latest masterpiece, Zombified.

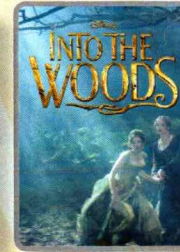
BUENA VISTA THEATRE

Deck 5, Aft
Today's Movies

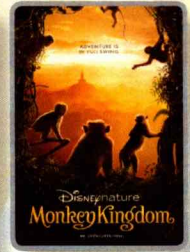
Open Captioning



8:30 am
Duration:
1 hr 21 mins
Rating: PG



12:45 pm
Duration:
2 hrs 4 mins
Rating: PG

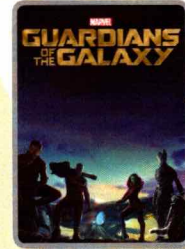


3:30 pm
Duration:
1 hr 21 mins
Rating: G

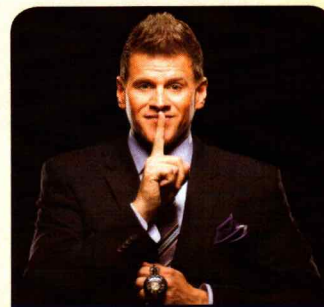
DOLBY 3D



5:30 pm & 8:00 pm
Duration:
2 hrs 9 mins
Rating: PG



10:30 pm
Duration:
2 hrs 2 mins
Rating: PG-13



FAMILY VARIETY ACT

Featuring the Comedy & Hypnosis of Dale K, as he entertains the entire family in this fun-filled show.

**Fathoms,
Deck 3, Forward
7:30 pm**



ADULT VARIETY ACT

Featuring the Comedy and Juggling of Max Winfrey, as he entertains you in this adult exclusive show.

**Fathoms (18+),
Deck 3, Forward
10:15 pm**

YOUTH ACTIVITIES OPEN HOUSE

Open House is an opportunity for all to come and participate in a variety of exciting activities and free time in the Oceaneer Club, Oceaneer Lab, it's a small world nursery, Vibe and Edge throughout the cruise. During these times secured programming will still be offered in the other venue for those looking to check their children into care.

Edge: 10:00 am - 11:00 am & 6:00 pm - 7:30 pm

Vibe: 10:30 am - 11:30 am & 7:30 pm - 9:00 pm

Disney's Oceaneer Club: 9:00 am - 10:30 am

Disney's Oceaneer Lab: 7:00 pm - 9:00 pm

MORE TO ENJOY WHILE ONBOARD



BOOK ONBOARD AND SAVE!

Explore all the itineraries Disney Cruise Line offers - from the Caribbean and Bahamas to Alaska or Europe. Save when you book your next family adventure onboard! Visit the Onboard Sales Desk for more information.



DISNEY VACATION CLUB

Visit the Disney Vacation Club information desk and ask us about show times where you will learn how to turn every vacation into the vacation of a lifetime.



PORT & SHOPPING INFORMATION

Join Gemma, your Port Shopping Guide, at 11:00 am in the Buena Vista Theatre, Deck 5, Aft, for her Port and Shopping Talk. Don't miss the Diamond, Gemstone and Watch Seminar at 3:30 pm in the Promenade Lounge, Deck 3, Aft. Don't miss these presentations for the amazing Tax and Duty Free Shopping Ashore opportunities that await you this cruise. Free goodies for everyone in attendance.

Connect @ Sea

We are now offering a NEW and improved Internet service to stay connected on your cruise like no other in the industry! Internet packages range from \$0.25 per MB - \$89.00 (1000 MB package). For more information contact your Connect@Sea Expert or Guest Services onboard.

QUARTER MASTERS ARCADE

Show what you've got on your journey on an underwater mission in Sea Wolf, or aim to win an awesome underwater camera in Master Key. Quarter Masters Arcade, located on Deck 9, Midship.

TRANSPORTATION INFORMATION

Should you wish to purchase transportation to Orlando International Airport, kindly proceed to Guest Services, Deck 3, Midship for further assistance.



What's your next adventure? Ask your friendly Port Adventures team about options for Grand Cayman and Cozumel. Don't forget to plan early for your day at Disney's exclusive island - Castaway Cay. Stop by the **Port Adventures Desk, Deck 3, Midship**, where our friendly team will assist you.

SHOPPING

DISNEY STORYTELLERS SERIES AT THE VISTA GALLERY

With artists who have been instrumental in creating the worlds of popular Disney films, stop by the Vista Gallery today for the Disney Storytellers Series and admire the unique interpretations of your favorite Disney characters by these talented artists. Deck 4, Midship.

EVERYTHING PRINCESS AT MICKEY'S MAINSAIL

Are you cruising with a young, aspiring Princess? Stop by Mickey's Mainsail for all things Disney Princess including dresses and accessories. Whether your princess dreams in the style of Cinderella, Belle, or Tiana, Mickey's Mainsail has everything you need to be royal ready! Deck 4, Forward.

HAIR BRAIDING ONBOARD

Add some flair to your hair when you visit a Disney Cruise Line® hair braiding station! Stop by a station today for more information and to learn all about the available braiding styles. Subject to restrictions and availability. Deck 9, Midship.

ALL TIED UP IN DISNEY CRUISE LINE SOUVENIRS!

From fitted tees to a stylish handbag, tie your outfit together with apparel and accessories from the nautical rope-inspired Disney Cruise Line collection "Mickey Knots," now available in White Caps. Deck 4, Forward.

REBECCA HOOK JEWELRY

Rebecca Hook Jewelry is onboard this week with a captivating collection of elegant jewelry pieces. Visit White Caps today and discover the piece that speaks to you! Deck 4, Forward.

2015 DISNEY CRUISE LINE MERCHANDISE

Step into Mickey's Mainsail today and commemorate your Disney cruise with a wide selection of 2015 Disney Cruise Line merchandise. From casual apparel to drinkware and more, you are sure to find a special souvenir for the whole family. Deck 4, Forward.

THE DISNEY PARKS COLLECTION BY PANDORA JEWELRY

The Disney Parks Collection by PANDORA Jewelry features hand-finished .925 sterling silver and 14K gold charms inspired by some of Disney's most beloved characters. Visit White Caps on Deck 4, Forward, where you'll find a specially designed sterling silver charm featuring a Disney Cruise Line ship.



GO-SMILE

Your smile is the outward expression of your inner beauty. A beaming smile makes you look younger, more radiant and confident. Are you ready to Smile? Then try our advanced Go-Smile teeth whitening treatment. It's a safe and effective way to take your smile from dull to dazzling in just 30 minutes.

\$149 per person \$258 for couples

Deck 9, Forward - Phone : 7-1465



H2O Spa Products Special Promotion

Restore moisture and softness with marine-rich formulas from H2O Plus. Receive a complimentary gift with your purchase of \$50.00 or more of H2O Plus Spa products.

• • • • •
**WHITE CAPS
DECK 4, FORWARD**



SAY CHEESE

Your family is dressed up and ready to enjoy the evening.

Capture the memories in your formal attire by visiting our professional portraiture studios in the Lobby Atrium, Deck 3 Midship, from

5:00 pm - 6:00 pm, 7:15 pm - 8:30 pm and 9:30 pm - 10:15 pm.

DMM027 04-28-2015 ©DISNEY

IMPORTANT INFORMATION

Security Notice

All Guests (including Children) who wish to disembark or embark the ship are required to present their Key to the World card at the gangway. A photo ID is also required for those Guests who are 18 years of age or older. Guests under the age of 18 are required to have a parent, guardian or other responsible adult sign an authorization form at the Guest Service Desk if they wish to go ashore unaccompanied or with any adult from another stateroom.

Sunscreen/Insect Repellent Advisory
Use sunscreen first and protect against mosquito bites and related illnesses by applying insect repellent on top of sunscreen when going ashore. Insect repellent is available for purchase in White Caps.

Cold and Flu Reminder

Please wash hands frequently and thoroughly, particularly before meals. Contact the Health Center by dialing 7-1923, should anyone in your party become ill.

Inclement Weather

For the safety of all Guests, outdoor events may be changed due to unforeseen weather conditions.

Corridor Quiet Hours

As a courtesy to all our Guests, please recognize quiet hallway hours from 10:00 p.m. til 8:00 a.m.

Environmental Message

With Disney's commitment to the Environment please refrain from throwing anything over the Ship's side. Thank you.

No Reserved Seats Policy

As a courtesy to all Guests we kindly advise that the saving of seats is not permitted in the Walt Disney Theatre, and the saving of the sun loungers is not permitted on Deck 9 and 10. Items left unattended will be returned to lost and found at Guest Services, Deck 3, Midship.

Smoking

For the comfort of our guests, the following areas are designated as smoking areas:

- Deck 10 Forward, Starboard Side
- Deck 9, Forward, Starboard Side at Quiet Cove
- Deck 4, Starboard Side from 6:00 p.m. to 6:00 a.m. only (all of Deck 4 is non-smoking from 6:00 a.m. to 6:00 p.m.)

Smoking is prohibited inside all guest staterooms and on stateroom verandahs. Guests found smoking in their staterooms or on their verandahs will be charged a \$250 stateroom recovery fee.

Walt Disney Theatre

Theatrical performances may use artificial fog, strobe lights, pyrotechnics and other special effects. For the safety of our performers and the comfort of those around you, the use of any photography or video recording device or any electronic equipment is prohibited.

Verandah Safety

Please do not leave any combustible materials on your balcony when not present in your stateroom for safety reasons.

Morning	8:30	8:45	9:00	9:15	9:30	9:45	10:00	10:15	10:30	10:45	11:00	11:15	11:30	11:45	12:00	12:15	12:30	12:45	1:00	1:15	1:30			
FUNNEL VISION	Robin Hood (G) Funnel Vision						Frozen (PG) Funnel Vision						Movie Challenge Poolside Funnel Vision											
BUENA VISTA THEATRE	Alexander...Very Bad Day (PG) Duration: 1 Hour 21 Minutes												Port & Shopping Talk			Into the Woods (PG) Duration: 2 Hours 4 Minutes								
CHARACTERS	Doc McStuffins DK4 Mid (S)			Captain America Preludes			Doc McStuffins DK4 Mid (S)			Jake DK4 Mid (S)			Sofia DK4 Mid (S)			Captain America Preludes			Pluto DK4 Mid (S)			Donald DK4 Mid (S)		
FUN FOR ALL AGES	Wishes Up Disney Junior D Lounge		Animation Donald Duck Promenade Lounge		Animation Pluto Promenade Lounge		Cruisin' for Trivia Promenade Lounge		Bingo Pre Sales		Family Fun Jackpot Bingo Fathoms		INCREDBLE DASH Lobby Atrium		LOVE SCALLINI Deck Stage		MICKEY 200 Fathoms (Limited Availability)							
ADULTS	Friends of Bill W. Keys		Art of The Theme Show Tour Palo		Ultimate Disney Trivia O'Gills Pub		Introduction to Acupuncture Keys		Disney Innovations O'Gills Pub		Animation O'Gills Pub		Club 18*21 - Lunch Lumiere's		Singles' Lunch Lumiere's		Disney Vacation Club D Lounge - Group Preview		Movie Quotes Trivia O'Gills Pub					
VIBE 14-17 YEARS OLD	Youth Activities Open House												Coffee Break		Gender Wars			Game Challenge						
EDGE 11-14 YEARS OLD	Youth Activities Open House												Goofy's World Records			Disney Scene It								
OCEANEER LAB 3-12 YEARS OLD	Scavenger Hunt			Super Sloppy Science			Monstropolis Most Wanted						Lunch											
OCEANEER CLUB 3-12 YEARS OLD	Youth Activities Open House						Go Fetch			Aloha Luau			Lunch											
	Mickey's Puzzle Playtime			Become Iron Man!																				

Afternoon	1:45	2:00	2:15	2:30	2:45	3:00	3:15	3:30	3:45	4:00	4:15	4:30	4:45	5:00	5:15	5:30	5:45	6:00	6:15	6:30	6:45	
FUNNEL VISION	The Lion King (G) Funnel Vision												Hercules (G) Funnel Vision									
BUENA VISTA THEATRE	Monkey Kingdom (G) Open Captioning Duration: 1 Hour 21 Minutes												McFarland, USA (PG) Duration: 2 Hours 9 Minutes									
CHARACTERS	Donald Gazebo		Goofy Lobby Atrium (P)		Chip & Dale Gazebo		Mickey Lobby Atrium (P)		Minnie Preludes		Mickey Preludes		Goofy Preludes									
FUN FOR ALL AGES	Icel Fire! Strings! Featuring GRETA SALOME Walt Disney Theatre		Disney Tunes Trivia Promenade Lounge		Basketball Free Throw Wide World of Sports		Bingo Pre Sales		\$5,000 Mega Jackpot Bingo Fathoms		Disney's Lobby Atrium		Captain's Welcome Reception Lobby Atrium		Live Music with The Dreamers Lobby Atrium		TWICE CHARMED Walt Disney Theatre					
ADULTS	Shuffleboard Tournament Deck 4, Portside		Acupuncture Clinic Senses Spa Fitness Center		Art of The Theme Show Tour Palo		Animation Mickey Mouse O'Gills Pub		Animation Goofy O'Gills Pub		Singles' Mingle Cove Cafe		Club 18*21 - Xbox Disney Infinity O'Gills Pub									
VIBE 14-17 YEARS OLD	Game Challenge: Zombified			Ice Cream Social			Brain Teasers			Sports Deck Fun			Smoothie Hour									
EDGE 11-14 YEARS OLD	Your Pick: Games Galore			Brains and Brawns			Ice Cream Social			Cards Tournament			Youth Activities Open House									
OCEANEER LAB 3-12 YEARS OLD	Animation Antics			Anyone Can Cook			Bingo			Dinner												
OCEANEER CLUB 3-12 YEARS OLD	Mouseketeer Training			Story Time with Belle			Become Iron Man!			Memory Wall												

Evening	7:00	7:15	7:30	7:45	8:00	8:15	8:30	8:45	9:00	9:15	9:30	9:45	10:00	10:15	10:30	10:45	11:00	11:15	11:30	11:45	12:00	
FUNNEL VISION	The Little Mermaid Funnel Vision						Fantasia 2000 (G) Funnel Vision						Enchanted (PG) Funnel Vision									
BUENA VISTA THEATRE	McFarland, USA (PG) Duration: 2 Hours 9 Minutes												Guardians of the Galaxy (PG-13) DOLBY 3D Duration: 2 Hours 2 Minutes									
CHARACTERS	Goofy DK4 Mid (S)		Minnie Preludes		Daisy DK4 Mid (S)		Chip & Dale DK4 Mid (S)		Daisy DK4 Mid (S)		Minnie DK4 Mid (S)		Mickey DK4 Mid (S)									
FUN FOR ALL AGES	Captain's Welcome Reception Lobby Atrium		Variety: Dale K Fathoms		Family Superstar Karaoke D Lounge		TWICE CHARMED Walt Disney Theatre		Formal Night After Party D Lounge		Family KARAOKE D Lounge		Live Music with Roberto & Daria Promenade Lounge		Live Music with Roberto & Daria Promenade Lounge							
ADULTS	Dave Sharp LIVE O'Gills Pub		80's Music Trivia O'Gills Pub		Dave Sharp LIVE O'Gills Pub		Live Piano with Bernadett Bihari Keys		Music Video Dance Party Fathoms		Club 18*21 Fathoms		The Physical Comedy of MAX WINFREY Fathoms		80's/90's Remix with Cruise Staff DJ Fathoms		Live Piano with Nick Messina Keys		Live Guitar with Dave Sharp O'Gills Pub			
VIBE 14-17 YEARS OLD	Smoothie Hour			Youth Activities Open House			Pump It Up			Anyone Can Cook: Pizza												
EDGE 11-14 YEARS OLD	Open House			Disney Infinity			Craft Corner			Anyone Can Cook: Pizza												
OCEANEER LAB 3-12 YEARS OLD	Youth Activities Open House												Boys and Girls Chill									
OCEANEER CLUB 3-12 YEARS OLD	Pluto's Pajama Party			Become Iron Man!			Boys and Girls Chill															

Symbol for activities that will be repeated during the cruise

FOLD

Fold along the dotted lines and take me with you so you don't miss any of the fun!

FOLD

IN THE SPOTLIGHT SERIES

SOLOVE IT! SERIES

JUMP UP! SERIES

CREATE & INVENT SERIES

OPEN HOUSE

CLUBHOUSE SERIES

STORYBOOK SERIES

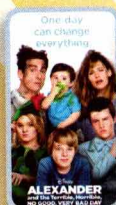
TUESDAY, APRIL 28, 2015 - DAY AT SEA

BUENA VISTA THEATRE

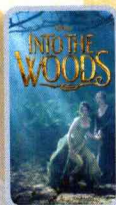
Deck 5, Aft

Open Captioning

DOLBY 3D



8:30 am
Duration: 1 hr 21 mins
Rating: PG



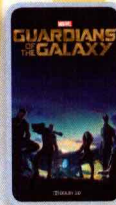
12:45 pm
Duration: 2 hrs 4 mins
Rating: PG



3:30 pm
Duration: 1 hr 21 mins
Rating: G



5:30 pm & 8:00 pm
Duration: 2 hrs 9 mins
Rating: PG



10:30 pm
Duration: 2 hrs 2 mins
Rating: PG-13

Character Appearances

DOC MCSTUFFINS

DK4 Mid (S)
8:30 am & 10:00 am

PRINCESS SOFIA

DK4 Mid (S)
9:00 am & 10:30 am

JAKE - THE NEVERLAND PIRATE

DK4 Mid (S)
9:30 am & 11:00 am

CAPTAIN AMERICA

Preludes - 9:30 am & 11:15 am

PLUTO

DK4 Mid (S) - 12:30 pm

DONALD DUCK

DK4 Mid (S) - 1:00 pm
Gazebo - 2:30 pm

GOOFY

Lobby Atrium (P) - 2:45 pm
Preludes - 5:30 pm
DK4 Mid (S) - 7:15 pm

CHIP & DALE

Gazebo - 3:00 pm
DK4 Mid (S) - 8:15 pm

MICKEY MOUSE

Lobby Atrium (P) - 3:15 pm
Preludes - 4:30 pm & 8:00 pm
DK4 Mid (S) - 10:30 pm

MINNIE MOUSE

Preludes - 5:00 pm & 7:30 pm
DK4 Mid (S) - 10:00 pm

DAISY DUCK

DK4 Mid (S)
7:45 pm & 9:30 pm



(P) - Portside, (S) - Starboard Side

Don't forget your Camera to capture those Magical Moments!

Check here each day for Character appearances.

For detailed Character appearance information

see the Character Information Board in the Lobby Atrium.

Meet-and-Greets will be advertised for the length of time the line will be open. To avoid disappointment, please meet at start time of appearances.

YOUTH ACTIVITIES THEMED EXPERIENCES

CLUBHOUSE SERIES

focuses on movement and features content which appeals to younger children.

STORYBOOK SERIES

is designed with a strong connection to the Disney classic stories.

JUMP UP! SERIES

includes large group games & movement-oriented activities.

CREATE & INVENT SERIES

will have a tactile focus allowing children to create and admire their work.

IN THE SPOTLIGHT SERIES

focuses on children's stage presence with lots of activities and enthusiasm.

SOLVE IT! SERIES

are less active, but will challenge children with problem/solutions-based activities.

YOUTH ACTIVITIES OPEN HOUSE

Activities for families, adults and children of all ages to enjoy together.

SHIP DIRECTORY

YOUTH ACTIVITIES

DISNEY'S OCEANEER CLUB	DECK 5, MID	9:00 AM - 12:00 AM
DISNEY'S OCEANEER LAB	DECK 5, MID	9:00 AM - 12:00 AM
EDGE	DECK 2, MID	10:00 AM - 1:00 AM
IT'S A SMALL WORLD NURSERY	DECK 5, AFT	9:00 AM - 11:00 PM
VIBE	DECK 10, MID	10:30 AM - 2:00 AM

POOLS

*Children under 12 years of age must have adult supervision in all pools.

AQUADUNK	DECK 10, MID	9:00 AM - 11:45 AM
		12:15 PM - 9:00 PM
AQUALAB	DECK 9, AFT	8:30 AM - 8:00 PM
GOOFY'S POOL	DECK 9, MID	9:00 AM - 6:00 PM
		8:00 PM - 10:00 PM
NEPHEWS' SPLASH ZONE	DECK 9, AFT	8:30 AM - 6:00 PM
QUIET COVE POOL (18+)	DECK 9, FWD	8:00 AM - 10:00 PM
TWIST 'N' SPOUT	DECK 9, AFT	9:00 AM - 9:00 PM

Complimentary pool vests are available for children to use in the pools onboard. They are located on the pool deck.

RECREATION

PORT ADVENTURES DESK	DECK 3, MID	9:00 AM - 5:00 PM
		7:00 PM - 8:30 PM
SENSES FITNESS CENTER (18+)	DECK 9, FWD	6:30 AM - 10:00 PM
WIDE WORLD OF SPORTS DECK	DECK 10, FWD	24 HOURS

GENERAL INFORMATION

BUENA VISTA THEATRE	DECK 5, AFT	SHOWTIMES
DISNEY VACATION CLUB DESK	DECK 4, MID	9:00 AM - 12:30 PM
		2:30 PM - 10:00 PM
ONBOARD SALES DESK	DECK 4, MID	10:00 AM - 12:00 PM
		2:30 PM - 6:00 PM
		7:30 PM - 8:30 PM
FUNNEL VISION	DECK 9, MID	SHOWTIMES
GUEST SERVICES	DECK 3, MID	24 HOURS
HAIR BRAIDING	DECK 9, MID	10:00 AM - 12:00 PM
		1:00 PM - 6:00 PM
		7:00 PM - 10:00 PM
MEDICAL HEALTH CENTER	DECK 1, FWD	9:30 AM - 11:00 AM
		4:30 PM - 7:00 PM
PORT & SHOPPING DESK	DECK 3, MID	7:30 PM - 8:30 PM
PRELUDES	DECK 4, FWD	5:30 PM - 9:00 PM
QUARTER MASTERS (ARCADE)	DECK 9, MID	24 HOURS
SENSES SPA AND SALON	DECK 9, FWD	7:00 PM - 11:00 PM
SHUTTERS PHOTO GALLERY	DECK 4, AFT	10:00 AM - 12:30 PM
		5:00 PM - 10:00 PM
TODDLER AREA (PROMENADE LOUNGE)	DECK 3, AFT	24 HOURS
WALT DISNEY THEATRE	DECK 4, FWD	SHOWTIMES

SHOPPING

MICKEY'S MAINSAIL	DECK 4, FWD	9:30 AM - 11:00 PM
QUACKS	DECK 9, MID	10:00 AM - 4:00 PM
SEA TREASURES	DECK 3, FWD	2:00 PM - 11:00 PM
VISTA GALLERY	DECK 4, MID	12:00 PM - 10:00 PM
WHITE CAPS	DECK 4, FWD	9:30 AM - 11:00 PM

DINNER MENU

Animator's Palate - Pacific Rim Cuisine
Carioca's - South American Cuisine
Lumiere's - French Cuisine

DRINK OF THE DAY

Deep Blue Sea (Alcoholic)
Mango Crush (Non-Alcoholic)

WEATHER FORECAST

Today: Partly Sunny
High: 78°F/26°C
Tomorrow: Partly Sunny
High: 82°F/28°C

Evening Attire: Formal

DINING & LOUNGES

BREAKFAST

CABANAS	DECK 9, AFT	7:30 AM - 11:30 AM
DAISY'S DE LITES	DECK 9, AFT	7:00 AM - 9:00 AM
LUMIERE'S (À-LA CARTE)	DECK 3, MID	8:30 AM - 10:00 AM

LUNCH

CABANAS	DECK 9, AFT	11:30 AM - 2:15 PM
DAISY'S DE LITES	DECK 9, AFT	11:00 AM - 6:00 PM
LUMIERE'S (À-LA CARTE)	DECK 3, MID	12:00 PM - 1:30 PM
PALO (BRUNCH)	DECK 10, AFT	10:00 AM - 12:30 PM
PETE'S BOILER BITES	DECK 9, AFT	11:00 AM - 6:00 PM
PINOCCHIO'S PIZZERIA	DECK 9, MID	11:00 AM - 6:00 PM

DINNER

ANIMATOR'S PALATE	DECK 4, AFT	5:45 PM & 8:15 PM
CABANAS TABLE SERVICE	DECK 9, AFT	6:30 PM - 8:30 PM
CARIOCA'S	DECK 3, AFT	5:45 PM & 8:15 PM
LUMIERE'S	DECK 3, MID	5:45 PM & 8:15 PM
PALO (FOR RESERVATIONS CALL 7-8843)	DECK 10, AFT	6:00 PM - 8:30 PM
PETE'S BOILER BITES	DECK 9, AFT	6:00 PM - 10:00 PM

LATE NIGHT SNACKS

O'GILLS PUB	DECK 3, FWD	10:45 PM - 11:45 PM
PINOCCHIO'S PIZZERIA	DECK 9, MID	9:30 PM - 12:00 AM
PROMENADE LOUNGE	DECK 3, AFT	10:45 PM - 11:45 PM

ADDED FEATURES

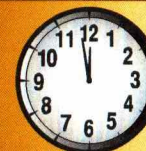
EYE SCREAM	DECK 9, AFT	11:00 AM - 11:00 PM
BEVERAGE STATION	DECK 9, AFT	24 HOURS
ROOM SERVICE	DIAL 7-4330	24 HOURS

ENTERTAINMENT - LOUNGES - BARS

Adults must be 21 and older to consume alcoholic beverages.

AFTER HOURS	DECK 3, FWD	(AFTER 9:00 P.M. ADULTS ONLY)
COVE CAFE (18+)	DECK 9, MID	6:30 AM - 12:00 AM
D LOUNGE	DECK 4, MID	SHOWTIMES
FATHOMS (18+)	DECK 3, FWD	7:00 PM - 2:00 AM
FROZONE TREATS	DECK 9, AFT	10:30 AM - 6:00 PM
INTERNET CAFE	DECK 3, AFT	24 HOURS
KEYS (18+)	DECK 3, FWD	6:00 PM - 12:00 AM
O'GILLS PUB (18+)	DECK 3, FWD	12:00 PM - 12:00 AM
PRELUDES	DECK 4, FWD	5:30 PM - 9:00 PM
PROMENADE LOUNGE	DECK 3, AFT	8:00 AM - 12:00 AM
PINOCCHIO'S PIZZERIA	DECK 9, MID	9:30 AM - 12:00 AM
SIGNALS (18+)	DECK 9, FWD	9:30 AM - 11:00 PM

Public Health Advisory: Consuming raw or undercooked meats, poultry, seafood, shellfish, or eggs may increase your risk for foodborne illness, especially if you have certain medical condition.



TIME ZONE CHANGE

Remember to turn your clocks
BACK 1 HOUR upon retiring on
TUESDAY evening, or first
thing **WEDNESDAY** morning.

IMPORTANT NUMBERS

Fire/Security: 7-3001
Medical EMERGENCY: 7-3000
Health Center: 7-1923