

PERSONAL NAVIGATOR

TUESDAY, MAY 12, 2015

Sunrise 6:38 am Sunset: 7:51 pm
Evening Attire: Optional Dress Up

Today: Partly Sunny High: 78°F/26°C
Tomorrow: Sunny High: 78°F/26°C

DAY AT SEA

TWICE CHARMED

AN ORIGINAL TWIST ON THE CINDERELLA STORY

STEP BACK IN TIME TO EXPERIENCE THE STORY OF CINDERELLA IN A MAGICAL NEW WAY. ENJOY THIS MAGNIFICENT MUSICAL PRODUCTION WITH YOUR FAVORITE CHARACTERS - AND A FEW NEW ONES!

WALT DISNEY THEATRE

Deck 4, Forward

6:15 pm & 8:30 pm

As a courtesy to all Guests, we kindly advise that the saving of seats is **not** permitted in the Walt Disney Theatre.



Assistance available at the entrance to the Walt Disney Theatre 30 minutes prior to show time.



Disney MAGIC Fun Facts

Tonnage: 84,000

Length Overall: 984 Feet

Ship's Registry: The Bahamas

Important Dates

Keel Laid: October 31, 1996

Launch Date: April 12, 1997

Inaugural Cruise: July 30, 1998


- The Magic was built by a process called Jumboisation (in 2 separate sections) in Italy at the Fincantieri Maghera Shipyard (stern) and the Fincantieri Ancona Shipyard (bow). The joint of the ship is just in front of Lumiere's.
- The anchor of the Disney Magic weighs 28,200 lbs (12,802.8kg) - the same weight as three elephants.
- Over 50 nationalities make up the 960 Crew Members on board.
- Sorcerer Mickey stands proudly 10 ft tall on the bow of the ship. There are other characters in the artwork around him.
- Goofy hangs 20 ft tall, painting the finishing touches on the stern.

MOVIE SPECIAL

MARVEL

AVENGERS

AGE OF ULTRON

 **DOLBY 3D**

WALT DISNEY THEATRE

RATED (PG-13) - 2 HRS 22 MINS

10:30 PM

DOORS OPEN 15 MINUTES PRIOR

Don't Miss:

Disney's Innovations: Theme Parks (18+)

O'Gills Pub, Deck 3, Forward - 10:45 am

Join us for our presentation showing the "Top 10" greatest innovations that the Walt Disney Company has introduced to theme parks.

Jack-Jack's Incredible Diaper Dash

Lobby Atrium, Deck 3, Midship - 11:30 am

Calling all baby cruisers! It's time to take to the mat to see who's the fastest crawler of the seven seas! Register your baby 15 minutes prior to the big race.

Captain's Signing

White Caps, Deck 4, Forward - 12:15 pm

Meet the Master of the Disney Magic and have your cruise memories signed.

Who Wants to be a Mouseketeer?

D Lounge, Deck 4, Midship - 7:30 pm

Your chance to get into the "hot seat" and win limited edition prizes. Or, play along as part of our live studio audience.

Match Your Mate (18+)

Fathoms, Deck 3, Forward - 10:15 pm

It's time to play everyone's favorite couples game show - Match Your Mate!

Visit the Onboard Sales Desk Early Today

Please visit the Onboard Sales desk, Deck 4, Midship, as early as possible today. The last day of the cruise tends to get busy in the evening, and we want to be sure you have the opportunity to save 10% on your next cruise, receive up to a \$200 onboard credit, and pay a reduced deposit.



DINNER MENU

Animator's Palate : Pacific Rim Cuisine
Carioca's : South American Cuisine
Lumiere's : French Cuisine

DRINK OF THE DAY

Coco Bali (Non-Alcoholic)
Yellow Bird (Alcoholic)

IMPORTANT NUMBERS

Fire/Security: 7-3001
Medical Emergency: 7-3000
Health Center: 7-1923

ADULT ACTIVITY HIGHLIGHTS

SENSES SPA FITNESS CLASSES & SEMINARS

Sunrise Stretch - Senses Spa & Salon - 7:00 am
Fab Abs - Senses Spa & Salon - 7:30 am
Body Sculpt Boot Camp (Nom. Fee) - Senses Spa & Salon - 9:00 am
Introduction to Acupuncture - Senses Spa & Salon - 10:00 am
Hair & Glamour Seminar - Senses Spa & Salon - 10:30 am
Secrets to a Flatter Stomach - Senses Spa & Salon - 11:00 am
Acupuncture Pain Relief - Senses Spa & Salon - 2:00 pm
Good Feet: Improving Posture - Senses Spa & Salon - 3:00 pm
Group Cycling - Senses Spa & Salon - 4:00 pm
Yoga - Senses Spa & Salon - 5:00 pm



TASTING CLASSES

Stem to Stern Wine Tasting (21+) - Keys - 12:00 pm
Cognac Tasting (21+) - Cove Cafe - 10:30 pm
 Please make reservations for tastings at Guest Services for a nominal fee.
 Tasting Seminars are only for Guests 21 and older.

CLUB 18*21: LUNCH

Lumiere's, Deck 3, Midship - 12:00 pm
 Get to know your fellow 18*21 Guests over a spot of lunch.

CLUB 18*21: XBOX DISNEY INFINITY

O'Gills Pub, Deck 3, Forward - 5:15 pm
 Get creative and build magical worlds of wonder as one of your favorite Disney characters in Disney's Infinity.

CLUB 18*21: MIXER

Fathoms, Deck 3, Forward - 10:00 pm
 Come join fellow cruisers your own age at our exclusive Club 18*21 event.

DISNEY'S INNOVATIONS: THEME PARKS

O'Gills Pub, Deck 3, Forward - 10:45 am
 Join us for our presentation showing the "Top 10" greatest innovations that the Walt Disney Company has introduced to theme parks.

ANYONE CAN COOK - APPLE STRUDEL

D Lounge, Deck 4, Midship - 2:30 pm
 From our galley to yours. Join our chefs as they show you how to prepare delicious dishes. Today's Menu - Apple Strudel.

70'S MUSIC TRIVIA

O'Gills Pub, Deck 3, Forward - 7:30 pm
 Let's step back in time and visit Studio 54 as we test your 70's music knowledge.



FUN FOR ALL AGES HIGHLIGHTS

WAKE UP WITH DISNEY JUNIOR

D Lounge, Deck 4, Midship - 8:30 am
 What happens when you experience unlimited fun with your favorite Disney Junior shows? You get an exciting dance party designed especially for preschoolers ages seven and under.



MICKEY'S PUZZLE PLAYTIME

Disney's Oceaneer Club, Deck 5, Midship - 9:15 am
 Come and play with Mickey & friends as they share their favorite games, puzzles and dances!



FAMILY FUN JACKPOT BINGO

Bingo Pre-Sales start at 10:30 am
Fathoms, Deck 3, Forward - 10:45 am
 Join your Cruise Staff as we play 4 cash prize games as well as raffle off great Disney Cruise Line prizes! Pre-Sales start 15 minutes prior to game.



JACK JACK'S INCREDIBLE DIAPER DASH

D Lounge, Deck 4, Midship - 11:30 am
 Want to learn more about taking magical vacations year after year? Please see a Disney Vacation Club representative on Deck 4, Midship, or call 7-2805 from your stateroom phone for more information about our interactive group presentation.



DISNEY VACATION CLUB GROUP PREVIEW

D Lounge, Deck 4, Midship - 12:30 pm
 Want to learn more about taking magical vacations year after year? Please see a Disney Vacation Club representative on Deck 4, Midship, or call 7-2805 from your stateroom phone for more information about our interactive group presentation.



MICKEY 200

Fathoms, Deck 3, Forward - 1:45 pm
 Don't eat your vegetables... race them in this wild and wacky charge to the finish line. May the best veggie win! (Limited Availability)



\$5,000 MEGA JACKPOT BINGO

Bingo Pre-Sales start at 3:30 pm
Fathoms, Deck 3, Forward - 3:45 pm
 Don't miss your chance to take home big money! 4 CASH prize games and great raffle prizes to be won! Complete the fourth game in 46 numbers or less and win the \$5,000 Mega Jackpot! PLUS a chance to win a pair of Sophia Fiori Midnight Sapphire Stud Earrings! Pre-Sales start 15 minutes prior to game.



DISNEY JUNIOR PIRATE & PRINCESS DANCE PARTY

D Lounge, Deck 4, Midship - 4:30 pm
 Calling all Pirates and Princesses! Come join us for a family dance party featuring music and fun activities from Jake & the Neverland Pirates and Sofia the First. Whether you favor tiaras or treasure chests, there's something for you at our Disney Junior Pirate & Princess Dance Party!



WHO WANTS TO BE A MOUSEKETEER?

D Lounge, Deck 4, Midship - 7:30 pm
 Your chance to get into the "hot seat" and win limited edition prizes. Or, play along as part of our live studio audience.



CLUB D DANCE PARTY

D Lounge, Deck 4, Midship - 9:45 pm
 Join your snazzy Cruise Staff as we turn D-Lounge into an electrifying family nightclub. Club D, where everyone is a V.I.P.!

YOUTH ACTIVITIES HIGHLIGHTS

DINE & PLAY

As a convenience for families dining at 8:15 pm, our Youth Activities Counselors will be available at 9:15 pm at the entrance of Lumiere's and Carioca's and at 9:30 pm at the entrance of Animator's Palate to bring registered children to join the fun in Disney's Oceaneer Club and Disney's Oceaneer Lab.



Deck 5, Aft (7-5864)

9:00 am - 11:00 pm

Infants and Toddlers can enjoy toys and activities at It's a small world nursery. Reservations are first come, first served so please stop by!



Deck 5, Midship (7-1439)
(3-12 years old)

9:00 am - 12:00 am

MOUSEKETEER IN TRAINING

2:00 pm

Take part in training exercises to become an Official Mouseketeer.

BOYS AND GIRLS CHILL

10:00 pm

Boys you will hang for competition, challenges, and fun. Girls you will chill with music, games, and fun.



Deck 5, Midship (7-1445)
(3-12 years old)

9:00 am - 12:00 am

SUPER SLOPPY SCIENCE

10:30 am

Join Professor Make-O-Mess in some of the most extreme experiments you will ever see in the world of Super Sloppy Science!

PISTON CUP CHALLENGE

7:30 pm

It's Dinoco time and you're part of the pit crew! Design your own race car and see if you've got what it takes to end up in the winner's circle!



Deck 2, Midship (7-5816)
(11-14 years old)

10:00 am - 1:00 am

GOOFY WORLD RECORDS

11:15 am

Compete in the Goofy-est games ever! Goofy and his pals have created a variety of games and contests for a wild time.

SUPER SLOPPY SCIENCE

12:00 am

Join Professor Make-O-Mess in some of the most extreme experiments you will ever see in the world of Super Sloppy Science!



Deck 10, Midship (7-18517)
(14-17 years old)

10:30 am - 2:00 am

ZOMBIFIED

2:00 pm

A big movie producer is looking for zombies to help him film the finale to his latest masterpiece, Zombified.

ANYONE CAN COOK: PIZZA

10:30 pm

Anyone can cook as we work together to create some of our favorite treats. From our galley to yours; join our chef as they show you how to create pizza!

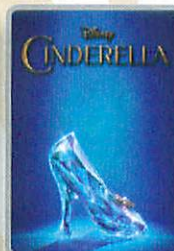
BUENA VISTA THEATRE

Deck 5, Aft
Today's Movies

Open Captioning



8:30 am
Duration:
1 hr 21 mins
Rating: G



12:30 pm
Duration:
1 hr 52 mins
Rating: PG



2:45 pm
Duration:
2 hrs 9 mins
Rating: PG

DOLBY 3D



5:15 pm & 8:00 pm
Duration: 2 hrs 22 mins
Rating: PG-13



10:45 pm
Duration: 2 hrs 22 mins
Rating: PG-13



FAMILY VARIETY ACT

Featuring the
Comedy & Hypnosis
of Dale K,
as he entertains the
entire family in this
fun-filled show.

*Fathoms,
Deck 3, Forward
7:30 pm*



ADULT GAME SHOW

It's time to play
everyone's favorite couple's
game show,
Match your Mate!

*Fathoms (18+),
Deck 3, Forward
10:15 pm*

YOUTH ACTIVITIES OPEN HOUSE

Open House is an opportunity for all to come and participate in a variety of exciting activities and free time in the Oceaneer Club, Oceaneer Lab, it's a small world nursery, Vibe and Edge throughout the cruise. During these times secured programming will still be offered in the other venue for those looking to check their children into care.

Edge: 10:00 am - 11:00 am & 6:00 pm - 7:30 pm

Vibe: 10:30 am - 11:30 am & 7:30 pm - 9:00 pm

Disney's Oceaneer Club: 9:00 am - 10:30 am

MORE TO ENJOY WHILE ONBOARD



BOOK ONBOARD AND SAVE!

Explore all the itineraries Disney Cruise Line offers - from the Caribbean and Bahamas to Alaska or Europe. Save when you book your next family adventure onboard! Visit the Onboard Sales Desk for more information.



DISNEY VACATION CLUB

Visit the Disney Vacation Club information desk and ask us about show times where you will learn how to turn every vacation into the vacation of a lifetime.



PORT & SHOPPING INFORMATION

Join Gemma, your Port Shopping Guide, at 11:00 am in the Buena Vista Theatre, Deck 5, Aft, for her Port and Shopping Talk. Attend the Diamond, Gemstone and Watch Seminar at 3:30 pm in the Promenade Lounge, Deck 3, Aft. Don't miss these presentations for the amazing Tax and Duty Free Shopping Ashore opportunities that await you this cruise. Free goodies for everyone in attendance.



GO-SMILE

Your smile is the outward expression of your inner beauty. A beaming smile makes you look younger, more radiant and confident. Are you ready to Smile? Then try our advanced Go-Smile teeth whitening treatment. It's a safe and effective way to take your smile from dull to dazzling in just 30 minutes.

\$149 per person \$258 for couples

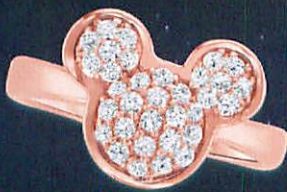
Deck 9, Forward - Phone: 7-1465

DISNEY INSPIRED DIAMOND COLLECTION

by SOPHIA FIORI

WHITE CAPS, DECK 4, FORWARD

(ONLY AVAILABLE ONBOARD)



SAY CHEESE

Your family is dressed up and ready to enjoy the evening.

Capture the memories in your formal attire by visiting our professional portraiture studios in the Lobby Atrium, Deck 3 Midship, from

5:00 pm - 6:00 pm, 7:15 pm - 8:30 pm and 9:30 pm - 10:15 pm.

Connect@Sea

We are now offering a NEW and improved Internet service to stay connected on your cruise like no other in the industry! Internet packages range from \$0.25 per MB - \$89.00 (1000 MB package). For more information contact your Connect@Sea Expert or Guest Services onboard.

QUARTER MASTERS ARCADE

Show what you've got on your journey on an underwater mission in Sea Wolf, or aim to win an awesome underwater camera in Master Key. Quarter Masters Arcade, located on Deck 9, Midship.

TRANSPORTATION INFORMATION

Should you wish to purchase transportation to Orlando International Airport, kindly proceed to Guest Services, Deck 3, Midship for further assistance.

EARLY FLIGHT INFORMATION

Guests with flights departing prior to 12:00 p.m. are kindly asked to notify Guest Services located on Deck 3, Midship, no later than 8:00 pm tonight.



From a visit to the world-renowned Atlantis Resort in Nassau to parasailing high above the turquoise waters around Castaway Cay, there is an adventure for everyone on your Disney Magic cruise. Visit the friendly team at the **Port Adventures Desk, Deck 3, Midship**, to learn more about these, and many more Port Adventures.

SHOPPING

DISNEY STORYTELLERS SERIES AT THE VISTA GALLERY

With artists who have been instrumental in creating the worlds of popular Disney films, stop by the Vista Gallery today for the Disney Storytellers Series and admire the unique interpretations of your favorite Disney characters by these talented artists. Deck 4, Midship.

MAGICAL MAKEOVERS WITH GLITTER & GO

Fairy Godmothers-in-Training have boarded the Disney Magic Cruise Ship and are anxiously awaiting to give you a sparkly transformation with the Glitter & Go makeover experience. Guests ages 3-12 will have the opportunity to allow their inner Princess to shine through in time for dinner or for meeting the lovely Disney Princesses themselves! For more information, please see a Merchandise Host/Hostess at Mickey's Mainsail, Deck 4 Forward.

2015 DISNEY CRUISE LINE MERCHANDISE

Step into Mickey's Mainsail today and commemorate your Disney cruise with a wide selection of 2015 Disney Cruise Line merchandise. From casual apparel to drinkware and more, you are sure to find a special souvenir for the whole family. Deck 4, Forward.

SOPHIA FIORI GUESS THE CARAT WEIGHT

Whoever guesses closest wins a Sophia Fiori fine jewelry piece! Winners announced tonight at 7:30 pm. Must be present to win. White Caps, Deck 4, Forward.

CAPTAIN'S SIGNING

Don't miss your chance to meet the Master of the Disney Magic! Stop by White Caps today at 12:15 pm where you can have your cruise mementos signed by our Captain. Deck 4, Forward.

REBECCA HOOK JEWELRY

Rebecca's designs are strong in form yet delicate in nature. Each piece, crafted with precious metals and semi-precious gemstones, speak to the romantic spirit in every woman. Discover the elegant Rebecca Hook Jewelry designs today when you visit White Caps, Deck 4 Forward.

DME029 05-12-2015 ©DISNEY

IMPORTANT INFORMATION

Security Notice

All Guests (including Children) who wish to disembark or embark the ship are required to present their Key to the World card at the gangway. A photo ID is also required for those Guests who are 18 years of age or older. Guests under the age of 18 are required to have a parent, guardian or other responsible adult sign an authorization form at the Guest Service Desk if they wish to go ashore unaccompanied or with any adult from another stateroom.

Sunscreen/Insect Repellent Advisory
Use sunscreen first and protect against mosquito bites and related illnesses by applying insect repellent on top of sunscreen when going ashore. Insect repellent is available for purchase in White Caps.

Cold and Flu Reminder

Please wash hands frequently and thoroughly, particularly before meals. Contact the Health Center by dialing 7-1923, should anyone in your party become ill.

Inclement Weather

For the safety of all Guests, outdoor events may be changed due to unforeseen weather conditions.

Corridor Quiet Hours

As a courtesy to all our Guests, please recognize quiet hallway hours from 10:00 p.m. til 8:00 a.m.

Environmental Message

With Disney's commitment to the Environment please refrain from throwing anything over the Ship's side. Thank you.

No Reserved Seats Policy

As a courtesy to all Guests we kindly advise that the saving of seats is not permitted in the Walt Disney Theatre, and the saving of the sun loungers is not permitted on Deck 9 and 10. Items left unattended will be returned to lost and found at Guest Services, Deck 3, Midship.

Smoking

For the comfort of our guests, the following areas are designated as smoking areas:
• Deck 10 Forward, Starboard Side
• Deck 9, Forward, Starboard Side at Quiet Cove
• Deck 4, Starboard Side from 6:00 p.m. to 6:00 a.m. only (all of Deck 4 is non-smoking from 6:00 a.m. to 6:00 p.m.)
Smoking is prohibited inside all guest staterooms and on stateroom verandahs. Guests found smoking in their staterooms or on their verandahs will be charged a \$250 stateroom recovery fee.

Walt Disney Theatre

Theatrical performances may use artificial fog, strobe lights, pyrotechnics and other special effects. For the safety of our performers and the comfort of those around you, the use of any photography or video recording device or any electronic equipment is prohibited.

Verandah Safety

Please do not leave any combustible materials on your balcony when not present in your stateroom for safety reasons.

TUESDAY, MAY 12, 2015 - DAY AT SEA

BUENA VISTA THEATRE

Deck 5, Aft

DOLBY 3D

Open Captioning



8:30 am
Duration:
1 hr 21 mins
Rating: G



12:30 pm
Duration:
1 hr 52 mins
Rating: PG



2:45 pm
Duration:
2 hrs 9 mins
Rating: PG



5:15 pm &
8:00 pm
Duration:
2 hrs 22 mins
Rating: PG-13



10:45 pm
Duration:
2 hrs 22 mins
Rating: PG-13

Character Appearances

DOC MCSTUFFINS

Deck 4, Midship (S)
8:30 am & 10:00 am

PRINCESS SOFIA

Deck 4, Midship (S)
9:00 am & 10:30 am

JAKE THE NEVERLAND PIRATE

Deck 4, Midship (S)
9:30 am & 11:00 am

CAPTAIN AMERICA

Preludes - 9:30 am & 11:15 am

CHARACTER DANCE PARTY

Lobby Atrium (P) - 12:15 pm

DONALD DUCK

Gazebo - 2:30 pm

GOOFEY

Lobby Atrium (P) - 2:45 pm
Preludes - 5:30 pm
Deck 4, Midship (S) - 7:15 pm

CHIP & DALE

Gazebo - 3:00 pm
Deck 4, Midship (S) - 8:15 pm

(P) - Portside, (S) - Starboard Side

Don't forget your Camera to capture those Magical Moments!

Check here each day for Character appearances.

For detailed Character appearance information see the Character Information Board in the Lobby Atrium.

Meet-and-Greets will be advertised for the length of time the line will be open. To avoid disappointment, please meet at start time of appearances.



YOUTH ACTIVITIES THEMED EXPERIENCES

CLUBHOUSE SERIES
focuses on movement and features content which appeals to younger children.

STORYBOOK SERIES
is designed with a strong connection to the Disney classic stories.

JUMP UP! SERIES
includes large group games & movement-oriented activities.

CREATE & INVENT SERIES
will have a tactile focus allowing children to create and admire their work.

IN THE SPOTLIGHT SERIES
focuses on children's stage presence with lots of activities and enthusiasm.

SOLVE IT! SERIES
are less active, but will challenge children with problem/solutions-based activities.

YOUTH ACTIVITIES OPEN HOUSE

Activities for families, adults and children of all ages to enjoy together.

SHIP DIRECTORY

YOUTH ACTIVITIES

DISNEY'S OCEANEER CLUB	DECK 5, MID	9:00 AM - 12:00 AM
DISNEY'S OCEANEER LAB	DECK 5, MID	9:00 AM - 12:00 AM
EDGE	DECK 2, MID	10:00 AM - 1:00 AM
IT'S A SMALL WORLD NURSERY	DECK 5, AFT	9:00 AM - 11:00 PM
VIBE	DECK 10, MID	10:30 AM - 2:00 AM

POOLS

*Children under 12 years of age must have adult supervision in all pools.

AQUADUNK	DECK 10, MID	9:00 AM - 11:45 AM
		12:15 PM - 9:00 PM
AQUALAB	DECK 9, AFT	8:30 AM - 8:00 PM
GOOFEY'S POOL	DECK 9, MID	9:00 AM - 6:00 PM
		8:00 PM - 10:00 PM
NEPHEWS' SPLASH ZONE	DECK 9, AFT	8:30 AM - 6:00 PM
QUIET COVE POOL (18+)	DECK 9, FWD	8:00 AM - 10:00 PM
TWIST 'N' SPOUT	DECK 9, AFT	9:00 AM - 9:00 PM

Complimentary pool vests are available for children to use in the pools onboard. They are located on the pool deck.

RECREATION

PORT ADVENTURES DESK	DECK 3, MID	9:00 AM - 5:00 PM
		7:00 PM - 8:30 PM
SENSES FITNESS CENTER (18+)	DECK 9, FWD	6:30 AM - 10:00 PM
WIDE WORLD OF SPORTS DECK	DECK 10, FWD	24 HOURS

GENERAL INFORMATION

BUENA VISTA THEATRE	DECK 5, AFT	SHOWTIMES
DISNEY VACATION CLUB DESK	DECK 4, MID	9:00 AM - 12:30 PM
		2:30 PM - 10:00 PM
ONBOARD SALES DESK	DECK 4, MID	10:00 AM - 12:00 PM
		3:30 PM - 6:00 PM
		7:30 PM - 8:30 PM
FUNNEL VISION	DECK 9, MID	SHOWTIMES
GUEST SERVICES	DECK 3, MID	24 HOURS
HAIR BRAIDING	DECK 9, MID	10:00 AM - 12:00 PM
		1:00 PM - 6:00 PM
		7:00 PM - 10:00 PM
MEDICAL HEALTH CENTER	DECK 1, FWD	9:30 AM - 11:00 AM
		4:30 PM - 7:00 PM
PORT & SHOPPING DESK	DECK 3, MID	7:30 PM - 8:30 PM
PRELUDES	DECK 4, FWD	5:30 PM - 9:00 PM
QUARTER MASTERS (ARCADE)	DECK 9, MID	24 HOURS
SENSES SPA AND SALON	DECK 9, FWD	7:00 PM - 11:00 PM
SHUTTERS PHOTO GALLERY	DECK 4, AFT	10:00 AM - 12:30 PM
		5:00 PM - 10:00 PM
TODDLER AREA (PROMENADE LOUNGE)	DECK 3, AFT	24 HOURS
WALT DISNEY THEATRE	DECK 4, FWD	SHOWTIMES

SHOPPING

MICKEY'S MAINSAIL	DECK 4, FWD	9:30 AM - 11:00 PM
QUACKS	DECK 9, MID	10:00 AM - 4:00 PM
SEA TREASURES	DECK 3, FWD	2:00 PM - 11:00 PM
VISTA GALLERY	DECK 4, MID	12:00 PM - 10:00 PM
WHITE CAPS	DECK 4, FWD	9:30 AM - 11:00 PM

DINNER MENU

Animator's Palate : Pacific Rim Cuisine
Carioca's : South American Cuisine
Lumiere's : French Cuisine

DRINK OF THE DAY

Coco Bab (Non-Alcoholic)
Yellow Bird (Alcoholic)

WEATHER FORECAST

Today: Partly Sunny
High: 78°F/26°C
Tomorrow: Sunny
High: 78°F/26°C

Evening Attire: Optional Dress Up

DINING & LOUNGES

BREAKFAST

CABANAS	DECK 9, AFT	7:30 AM - 11:30 AM
DAISY'S DE LITES	DECK 9, AFT	7:00 AM - 9:00 AM
LUMIERE'S (A-LA CARTE)	DECK 3, MID	8:30 AM - 10:00 AM

LUNCH

CABANAS	DECK 9, AFT	11:30 AM - 2:00 PM
DAISY'S DE LITES	DECK 9, AFT	11:00 AM - 6:00 PM
LUMIERE'S (A-LA CARTE)	DECK 3, MID	12:00 PM - 1:30 PM
PALO (BRUNCH)	DECK 10, AFT	10:00 AM - 12:30 PM
PETE'S BOILER BITES	DECK 9, AFT	11:00 AM - 6:00 PM
PINOCCHIO'S PIZZERIA	DECK 9, MID	11:00 AM - 6:00 PM

DINNER

ANIMATOR'S PALATE	DECK 4, AFT	5:45 PM & 8:15 PM
CABANAS TABLE SERVICE	DECK 9, AFT	6:30 PM - 8:30 PM
CARIOCA'S	DECK 3, AFT	5:45 PM & 8:15 PM
LUMIERE'S	DECK 3, MID	5:45 PM & 8:15 PM
PALO (FOR RESERVATIONS CALL 7-6843)	DECK 10, AFT	6:00 PM - 8:30 PM
PETE'S BOILER BITES	DECK 9, AFT	6:00 PM - 10:00 PM

LATE NIGHT SNACKS

O'GILLS PUB	DECK 3, FWD	10:45 PM - 11:45 PM
PINOCCHIO'S PIZZERIA	DECK 9, MID	9:30 PM - 12:00 AM
PROMENADE LOUNGE	DECK 3, AFT	10:45 PM - 11:45 PM

ADDED FEATURES

EYE SCREAM	DECK 9, AFT	11:00 AM - 11:00 PM
BEVERAGE STATION	DECK 9, AFT	24 HOURS
ROOM SERVICE	DIAL 7-4330	24 HOURS

ENTERTAINMENT - LOUNGES - BARS

Adults must be 21 and older to consume alcoholic beverages.

AFTER HOURS	DECK 3, FWD	(AFTER 9:00 PM. ADULTS ONLY)
COVE CAFE (18+)	DECK 9, MID	6:30 AM - 12:00 AM
D LOUNGE	DECK 4, MID	SHOWTIMES
FATHOMS (18+)	DECK 3, FWD	7:00 PM - 2:00 AM
FROZONE TREATS	DECK 9, AFT	10:00 AM - 6:00 PM
INTERNET CAFE	DECK 3, AFT	24 HOURS
KEYS (18+)	DECK 3, FWD	6:00 PM - 12:30 AM
O'GILLS PUB (18+)	DECK 3, FWD	11:00 AM - 12:00 AM
PRELUDES	DECK 4, FWD	5:30 PM - 9:00 PM
PROMENADE LOUNGE	DECK 3, AFT	8:00 AM - 12:00 AM
PINOCCHIO'S PIZZERIA	DECK 9, MID	9:00 AM - 12:00 AM
SIGNALS (18+)	DECK 9, FWD	9:30 AM - 11:00 PM

Public Health Advisory: Consuming raw or undercooked meats, poultry, seafood, shellfish, or eggs may increase your risk for foodborne illness, especially if you have certain medical condition.

IMPORTANT NUMBERS

Fire/Security: 7-3001
Medical EMERGENCY: 7-3000
Health Center: 7-1923

Morning	8:30	8:45	9:00	9:15	9:30	9:45	10:00	10:15	10:30	10:45	11:00	11:15	11:30	11:45	12:00	12:15	12:30	12:45	1:00	1:15	1:30	
FUNNEL VISION	Robin Hood (G) Funnel Vision						Frozen (PG) Funnel Vision						Disney Movie Challenge Poolside Funnel Vision									
BUENA VISTA THEATRE	Monkey Kingdom (G) Open Captioning Duration: 1 Hour 21 Minutes						Port & Shopping Talk Buena Vista Theatre						Cinderella (2015) (PG) Duration: 1 Hour 52 Minutes									
CHARACTERS	Doc McStuffins DK4 Mid (S)			Jake DK4 Mid (S)			Doc McStuffins DK4 Mid (S)			Jake DK4 Mid (S)			Character Dance Party Lobby Atrium									
FUN FOR ALL AGES			Animation Donald Duck Promenade Lounge		Animation Pluto Promenade Lounge		Cruisin' for Trivia Promenade Lounge		Bingo Pre Sales		Family Fun Jackpot Fathoms						Magic Quest Fathoms		Disney Tunes Trivia Promenade Lounge			
			Mickey's Puzzle Playtime		Become Iron Man!						Crafts: Masquerade Masks Promenade Lounge				Captain's Signing White Caps							
ADULTS	Friends of Bill W. Keys		Art of The Theme Show Tour Palo		Ultimate Disney Trivia O'Gills Pub		Seminar: Into to Acupuncture Senses Spa & Salon				Theme Parks O'Gills Pub				Club 18*21: Lunch Lumiere's		Singles' Lunch Lumiere's				Movie Quotes Trivia O'Gills Pub	
VIBE 14-17 YEARS OLD							Youth Activities Open House						Coffee Break		Gender Wars				Game Challenge			
EDGE 11-14 YEARS OLD							Youth Activities Open House						Goofy's World Records				Disney Scene It					
OCEANEER LAB 3-12 YEARS OLD							Scavenger Hunt			Super Sloppy Science			Animation Antics			Lunch						
OCEANEER CLUB 3-12 YEARS OLD							Youth Activities Open House			Hula Hoop Jam			Aloha Luau									
							Mickey's Puzzle Playtime			Become Iron Man!												

Symbol for activities that will be repeated during the cruise

FOLD

Afternoon	1:45	2:00	2:15	2:30	2:45	3:00	3:15	3:30	3:45	4:00	4:15	4:30	4:45	5:00	5:15	5:30	5:45	6:00	6:15	6:30	6:45			
FUNNEL VISION									Tarzan (G) Funnel Vision						Monsters, Inc. (G) Funnel Vision									
BUENA VISTA THEATRE					McFarland, USA (PG) Duration: 2 Hours 9 Minutes								Avengers: Age of Ultron (PG-13)											
CHARACTERS					Goofy Lobby Atrium (P)		Mickey Lobby Atrium (P)				Mickey Preludes						Goofy Preludes							
					Donald Gazebo		Chip & Dale Gazebo								Minnie Preludes									
FUN FOR ALL AGES			Crafts: 3D Crafts Promenade Lounge				Bingo Pre-Sales Fathoms		\$5,000 MEGA Jackpot 								Live Music with The Dreamers Lobby Atrium							
							Basketball Free Throw Wide World of Sports										Family Dance Party Promenade Lounge							
ADULTS	Shuffleboard Challenge Promenade Deck						Art of The Theme Show Tour Palo				Animation - Mickey Mouse O'Gills Pub		Animation - Goofy O'Gills Pub		Club 18*21 - Xbox Disney Infinity O'Gills Pub									
	Acupuncture Clinic Senses Spa & Salon		D Lounge - Apple Strudel								Group Cycling Senses Spa & Salon				Singles' Mingle Cove Cafe									
VIBE 14-17 YEARS OLD	Game Challenge: Zombified								Ice Cream Social				Brain Teasers				Sports Deck Fun				Smoothie Hour			
EDGE 11-14 YEARS OLD	Your Pick: Games Galore				Around the World in 7 days								Ice Cream Social		Cards Tournament				Youth Activities Open House					
OCEANEER LAB 3-12 YEARS OLD	Monstropolis Most Wanted								Anyone Can Cook								Bingo							
OCEANEER CLUB 3-12 YEARS OLD																								
	Mouseketeer Training								Story Time with Belle						Become Iron Man!		Dress Up Fun		Once Upon a Time					

FOLD

Evening	7:00	7:15	7:30	7:45	8:00	8:15	8:30	8:45	9:00	9:15	9:30	9:45	10:00	10:15	10:30	10:45	11:00	11:15	11:30	11:45	12:00		
FUNNEL VISION	The Little Mermaid Funnel Vision							Fantasia 2000 (G) Funnel Vision						Enchanted (PG) Funnel Vision									
BUENA VISTA THEATRE	Avengers: Age of Ultron (PG-13)														Avengers: Age of Ultron (PG-13) Duration: 2 Hours 22 Minutes								
CHARACTERS	Goofy DK4 Mid (S)		Daisy DK4 Mid (S)		Chip & Dale DK4 Mid (S)				Daisy DK4 Mid (S)						Mickey DK4 Mid (S)								
		Minnie Preludes			Mickey Preludes								Minnie DK4 Mid (S)										
FUN FOR ALL AGES	The Dreamers LIVE Lobby Atrium	The Comedy & Hypnosis of DALE K Fathoms						Club D Dance Party D Lounge			Family Superstar Karaoke D Lounge												
		Who Wants to be a Mouseketeer? D Lounge			Walt Disney Theatre			Live Music with Roberto & Daria Promenade Lounge															
ADULTS	Dave Sharp LIVE O'Gills Pub	70's Music Trivia O'Gills Pub		Dave Sharp LIVE O'Gills Pub		Music Video Dance Party Fathoms			Club 18*21 Fathoms				80's/90's Remix with Cruise Staff DJ Fathoms										
	Tribute to Sinatra With Nick Messina Keys			Live Piano With Joe Creamer Keys					Pub Quiz O'Gills Pub				Live Guitar with Dave Sharp O'Gills Pub										
VIBE 14-17 YEARS OLD	Smoothie Hour	Youth Activities Open House						Pump It Up					Anyone Can Cook: Pizza										
EDGE 11-14 YEARS OLD	Open House	Disney Infinity						Craft Corner					Anyone Can Cook: Pizza										
OCEANEER LAB 3-12 YEARS OLD	Piston Cup Challenge											Boys and Girls Chill											
OCEANEER CLUB 3-12 YEARS OLD	Pluto's Pajama Party						Become Iron Man!					Boys and Girls Chill											

FOLD

AT THE SPOTLIGHT SERIES

SOLOVE IT! SERIES

CLUBHOUSE SERIES

CLUBHOUSE SERIES