

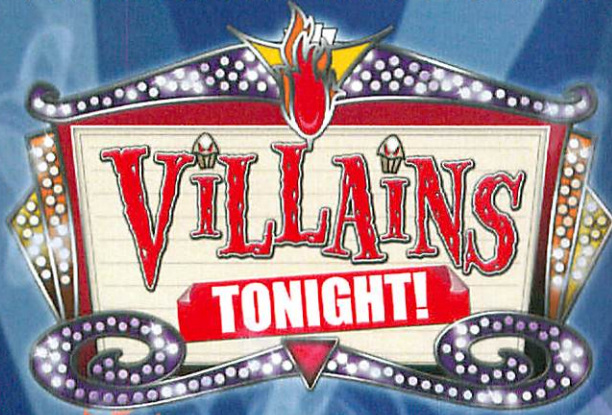
# PERSONAL NAVIGATOR

MONDAY, MAY 11, 2015

Sunrise: 6:46 am Sunset: 8:01 pm  
 Evening Attire: Cruise Casual  
 All Ashore: 12:30 pm  
 All Aboard: 7:30 pm  
 Today: Sunny High: 80°F/27°C  
 Tomorrow: Partly Sunny High: 78°F/26°C

KEY WEST, FLORIDA

DISNEY CRUISE LINE PRESENTS




WALT DISNEY THEATRE

Deck 4, Forward  
 6:15 pm & 8:30 pm

As a courtesy to all Guests, we kindly advise that the saving of seats is **not** permitted in the Walt Disney Theatre.



 Assistance available at the entrance to the Walt Disney Theatre 30 minutes prior to show time.

## Welcome to Key West

The U.S. government acquired Key West from Spain in the early 1800s. During those days, most of the isolated islanders made their living as wreckers and pirates, diving for the booty from ships that wrecked on the coral reefs offshore.

In the early 1930s Key West was recognized as a resort town and hotels, restaurants, bars sprang up around the island. For about 6 months business was wonderful until a hurricane tore up the railroad and rendered the island helpless.

The State of Florida and the Federal Government took over and began the work of rehabilitation, particularly directed toward development of tourist facilities and attractions.

The number one business here is tourism and a laid back kind of fun. But only in Key West does the sun shine the brightest when it sets.

Everyone gathers for the never planned, always varied Sunset Celebration on the Mallory Dock. Once the sun is safely tucked away by jugglers, mimes, musicians and street artists, the city moves to a different beat.



### FAMILY DANCE PARTY

Come see what Donald and his friends are up to this time. Bring the family out to this interactive dance party featuring fun Latin music! Your family will learn to Salsa, Merengue and just have a Latin good time!

D Lounge,  
 Deck 4, Midship,  
 7:30 pm

## Don't Miss:

### Walking Ship Tour

*Buena Vista Theatre, Deck 5, Aft - 10:00 am*  
 Enjoy the beauty of the Disney Magic® with your Cruise Staff in this guided tour.

### Disney Innovations: Animation (18+)

*O'Gills Pub, Deck 3, Forward - 10:30 am*  
 Join us for our presentation showing the "Top 10" greatest innovations that the Walt Disney Company has introduced to the field of Animation.

### Chip-It Golf (12+)

*Lobby Atrium, Deck 3, Midship - 4:00 pm*  
 It's par for the course for our Guests 12 and older to compete on our special "greens" in this fun tournament.

### Variety: John Cassidy (18+)

*Fathoms, Deck 3, Forward - 10:15 pm*  
 Featuring the Comedy & Magic of John Cassidy, as he entertains you in this adult exclusive show.



Please check your tickets for meeting times and locations. Visit the Port Adventure's Desk, Deck 3, Midship for any questions.

## DINNER MENU

Animator's Palate : Pacific Rim Cuisine  
 Carioca's : South American Cuisine  
 Lumiere's : French Cuisine

## DRINK OF THE DAY

Espresso Chiller (Non-Alcoholic)  
 Key Lime Margarita (Alcoholic)

## IMPORTANT NUMBERS

Fire/Security: 7-3001  
 Medical Emergency: 7-3000  
 Health Center: 7-1923



# ADULT ACTIVITY HIGHLIGHTS



## SENSES SPA FITNESS CLASSES & SEMINARS

*Sunrise Stretch* - Senses Spa & Salon - 7:00 am  
*Fab Abs* - Senses Spa & Salon - 7:30 am  
*Group Cycling* - Senses Spa & Salon - 8:00 am  
*Body Sculpt Boot Camp* (Nom. Fee) - Senses Spa & Salon - 9:00 am  
*Ultimate Hair Cut Seminar* - Senses Spa & Salon - 9:30 am  
*Detox for Health & Weight Loss* - Senses Spa & Salon - 10:00 am  
*Introduction to Acupuncture* - Senses Spa & Salon - 10:30 am  
*Pamper Party* - Senses Spa & Salon - 12:00 pm  
*Pure Form Pilates* - Senses Spa & Salon - 5:00 pm

## TASTING CLASSES

*Tequila & Margarita Tasting* (21+) - Keys - 3:00 pm  
*Whiskey Tasting* (21+) - Cove Cafe - 10:30 pm  
 Please make reservations for tastings at Guest Services for a nominal fee.  
 Tasting Seminars are only for Guests 21 and older.



## CLUB 18\*21: JENGA CHALLENGE

*O'Gills Pub, Deck 3, Forward - 5:15 pm*  
 Have some fun with this classic game.

## CLUB 18\*21: SOCIAL

*Fathoms, Deck 3, Forward - 10:00 pm*  
 Come and socialize with your fellow cruisers.

## ART OF THE THEME SHOW TOUR

*Palo, Deck 10, Aft - 9:00 am*  
 Join us for a guided tour highlighting the design, Imagineering and artistry of the Disney Magic. This tour is reserved for Guests 18 and over.



## DISNEY INNOVATIONS: ANIMATION

*O'Gills Pub, Deck 3, Forward - 10:30 am*  
 Join us for our presentation showing the "Top 10" greatest innovations that the Walt Disney Company has introduced to the field of Animation.

## BRAINTEASERS TRIVIA

*O'Gills Pub, Deck 3, Forward - 11:15 am & 7:30 pm*  
 Put your brain to the test as your Club Host, pushes the limits of your knowledge with some classic Brainteasers. Can you figure them out?

## PUB QUIZ

*O'Gills Pub, Deck 3, Forward - 9:45 pm*  
 Join us as we test your knowledge against your fellow Guests at our Pub Quiz challenge.

# SAFETY ASHORE INFORMATION

While you will find many great experiences ashore, please remain vigilant about your personal safety and the safety of your belongings. As in any large urban tourist destination, you'll want to take some basic precautions to make the most of your time ashore.

- Be aware of your surroundings at all times. Avoid short cuts, narrow alleys and poorly lit streets.
- Avoid wandering from the main shopping and tourist areas into unfamiliar territory. If venturing out independently, have a plan, use only licensed taxi operators.
- Identity/Credit Card theft can occur anywhere. Please remain vigilant in monitoring the safe keeping of your personal information.
- Leave valuables in your room safe and avoid carrying large amounts of cash. Exercise caution when using ATMs. Cameras and handbags should be carried close to your body or concealed out of sight.
- Leave air transportation tickets and other travel documents in your room safe. When going ashore, each adult is required to carry a Driver's license, passport or other government-issued photo ID. - Note: Some ports may require guests to carry passports ashore.
- Most crimes are easier to commit in dark unlit areas. When going ashore at night, please be extra vigilant about your personal safety.

# FUN FOR ALL AGES HIGHLIGHTS

## WAKE UP WITH DISNEY JUNIOR

*D Lounge, Deck 4, Midship - 8:30 am*  
 What happens when you experience unlimited fun with your favorite Disney Junior shows? You get an exciting dance party designed especially for preschoolers ages seven and under.



## ANIMATION - MICKEY MOUSE

*Promenade Lounge, Deck 3, Aft - 9:00 am*  
 Your Cruise Staff teach you how to draw one of your favorite Disney friends - Mickey Mouse.

## ANIMATION - GOOFY

*Promenade Lounge, Deck 3, Aft - 9:30 am*  
 Your Cruise Staff teach you how to draw one of your favorite Disney friends - Goofy.

## WALKING SHIP TOUR

*Buena Vista Theatre, Deck 5, Aft - 10:00 am*  
 Enjoy the beauty of the Disney Magic® with your Cruise Staff in this guided tour.

## DISNEY VACATION CLUB GROUP PREVIEW

*D Lounge, Deck 4, Midship - 10:30 am*  
 Want to learn more about taking magical vacations year after year? Please see a Disney Vacation Club representative on Deck 4, Midship, or call 7-2805 from your stateroom phone for more information about our interactive group presentation.



## DIAMOND JACKPOT BINGO

*Bingo Pre-Sales start at 10:30 am*  
*Fathoms, Deck 3, Forward - 10:45 am*  
 Join us for 4 cash prize games and your chance to win a diamond pendant! Everyone attending will also receive a voucher to collect a free Diamonds International charm bracelet! Pre-Sales start 15 minutes prior to the game.



## CHIP-IT GOLF (12+)

*Lobby Atrium, Deck 3, Midship - 4:00 pm*  
 It's par for the course for our Guests 12 and older to compete on our special "greens" in this fun tournament.



## SENSES SPA BINGO

*Bingo Pre-Sales start at 7:15 pm*  
*Fathoms, Deck 3, Forward - 7:30 pm*  
 Four CASH prizes to be won! Plus great spa prizes that will pamper you, including a mini facial and massages all courtesy of the Senses Spa and Salon. Serenity now! Pre-Sales start 15 minutes prior to game.



## SALUDOS AMIGOS FIESTA

*D Lounge, Deck 4, Midship - 7:30 pm*  
 Come see what Donald and his friends are up to this time. Bring the family out to this interactive dance party featuring fun Latin music! Your family will learn to salsa, merengue and just have a Latin good time!



## WHO WANTS TO BE A MOUSEKETEER?

*D Lounge, Deck 4, Midship - 9:45 pm*  
 Your chance to get into the "hot seat" and win limited edition prizes. Or, play along as part of our live studio audience.





# YOUTH ACTIVITIES HIGHLIGHTS

## DINE & PLAY

As a convenience for families dining at 8:15 pm, our Youth Activities Counselors will be available at 9:15 pm at the entrance of Lumiere's and Carioca's and at 9:30 pm at the entrance of Animator's Palate to bring registered children to join the fun in Disney's Oceaneer Club and Disney's Oceaneer Lab.



**Deck 5, Aft (7-5864)**

**9:00 am - 11:00 pm**

Infants and Toddlers can enjoy toys and activities at It's a small world nursery. Reservations are first come, first served so please stop by!



**Deck 5, Midship (7-1439)**  
(3-12 years old)

**9:00 am - 12:00 am**

### STITCH'S GREAT ADVENTURE

**10:30 am**

Stitch needs your help in trying to capture ten of his lost cousins before they cause all kinds of problems on the ship!

### LITTLE EINSTEIN'S ADVENTURE

**5:00 pm**

Your junior cruisers will have the time of their lives with this program inspired by their favorite show with fun activities guaranteed to make them feel like a little genius!



**Deck 5, Midship (7-1445)**  
(3-12 years old)

**9:00 am - 12:00 am**

### GOOFY FILES

**11:00 am**

This fascinating activity takes you into the invisible world of forensics where you will discover different ways to identify the suspect of a crime.

### MAGIC SHOW

**7:30 pm**

The Magnificent Magician will demonstrate to you some of the best known magic tricks on the sea.



**Deck 2, Midship (7-5816)**  
(11-14 years old)

**10:00 am - 1:00 am**

### SPORTS DECK FUN

**4:00 pm**

Take over the Sports Deck with some fun and friendly competition.

### PISTON CUP CHALLENGE

**12:00 am**

It's Dinoco time and you're part of the pit crew! Design your own race car and see if you've got what it takes to end up in the winner's circle!



**Deck 10, Midship (7-18517)**  
(14-17 years old)

**10:30 am - 2:00 am**

### ANIMATION CELLS

**12:00 pm**

Learn what it takes to be a Disney Animator, then put your new skills to the test as you create your very own animation cell.

### THAT'S HILARIOUS

**10:30 pm**

Ever wanted to show off your comedy skills? Then be a part of the cast for the crazy improv show "That's Hilarious" and put on a live show for your friends.

# BUENA VISTA THEATRE

Deck 5, Aft  
Today's Movies

Open Captioning



**8:30 am**  
Duration:  
1 hr 21 mins  
Rating: PG



**10:15 am**  
Duration:  
1 hr 52 mins  
Rating: PG



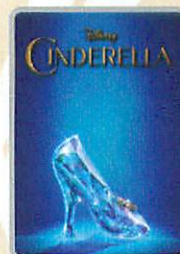
**12:45 pm**  
Duration:  
1 hr 21 mins  
Rating: G



**3:00 pm**  
Duration: 2 hrs 9 mins  
Rating: PG



**5:30 pm & 8:15 pm**  
Duration: 1 hr 48 mins  
Rating: PG



**10:30 pm**  
Duration: 1 hr 52 mins  
Rating: PG



## ADULT VARIETY ACT

Featuring the  
Comedy & Magic  
of John Cassidy,  
as he entertains you in this  
adult exclusive show.

**Fathoms (18+),  
Deck 3, Forward  
10:15 pm**



## FAMILY DANCE PARTY

Club New Year's Eve, you won't want to miss this journey of musical genres in history and performances by some of your favorite Cruise Staff. Bring your family and help us count down to a brand new year!

**D Lounge,  
Deck 4, Midship,  
10:30 pm**

## YOUTH ACTIVITIES OPEN HOUSE

Open House is an opportunity for all to come and participate in a variety of exciting activities and free time in the Oceaneer Club, Oceaneer Lab, it's a small world nursery, Vibe and Edge throughout the cruise. During these times secured programming will still be offered in the other venue for those looking to check their children into care.

Edge: 10:00 am - 11:30 am & 7:30 pm - 9:00 pm

Vibe: 10:30 am - 12:00 pm & 6:00 pm - 7:30 pm

Disney's Oceaneer Club: 12:30 pm - 4:00 pm

Disney's Oceaneer Lab: 9:00 am - 10:30 am



# MORE TO ENJOY WHILE ONBOARD

## ALASKA AWAITS

Take your family on an Alaskan adventure they'll never forget! Sail through magnificent fjords fed by glaciers. Discover untamed nature and walk in the footsteps of prospectors. Begin your adventure today! Visit the Onboard Sales Desk to learn more about our special onboard booking offer.

## DISNEY VACATION CLUB

Visit the Disney Vacation Club information desk and ask us about show times where you will learn how to turn every vacation into the vacation of a lifetime.

## PORT & SHOPPING INFORMATION

Join Gemma, your Port Shopping Guide, at 10:30 am in Promenade Lounge, Deck 3, Aft, for this not to be missed presentation on Key West Highlights. You do not want to miss out on the unbelievable shopping in Key West. Enter a raffle to win a beautiful piece of jewelry. Everyone in attendance will receive a charm.

## Connect@Sea

We are now offering a NEW and improved Internet service to stay connected on your cruise like no other in the industry! Internet packages range from \$0.25 per MB - \$89.00 (1000 MB package). For more information contact your Connect@Sea Expert or Guest Services onboard.

## EARLY FLIGHT INFORMATION

Guests with flights departing prior to 12:00 p.m. are kindly asked to notify Guest Services located on Deck 3, Midship, no later than 8:00 pm tonight.

## ONBOARD AIRLINE CHECK IN

Stop by the Guest Services Desk, Deck 3, Midship to find out about enrolling in our Onboard Airline Check In Service.

## THE BRITISH ISLES & EUROPEAN VARIETY

Disney Cruise Line is now visiting more than 15 European Countries in Summer 2016! Including for the first time a select sailing to the majestic British Isles, as well as return visits to Norway, Iceland and the Mediterranean.

Disney Cruise Line

## PORT ADVENTURES

Key West is an exciting port of call not far off the coast of the continental United States. As the largest island in Florida, Key West measures 4 miles long and 2 miles wide and is a tourist destination made famous in the last century for being the residence and occasional inspiration for notable writers Ernest Hemingway and Tennessee Williams. The island represents the southernmost point in the continental U.S., and because of proximity to the Gulf Stream, enjoys a mild tropical climate.

Many memories await, what's your adventure?

Port Adventures Desk, Deck 3, Midship.

## SHOPPING

### THOMAS KINKADE ART AT THE VISTA GALLERY

Thomas Kinkade, also known as "The Painter of Light," is one of Disney's most popular and beloved artists. Visit the Vista Gallery to view some of his original dreamlike interpretations of your favorite Disney characters. Deck 4, Midship.

### THE DISNEY PARKS COLLECTION BY PANDORA JEWELRY

The Disney Parks Collection by PANDORA Jewelry features hand-finished .925 sterling silver and 14K gold charms inspired by some of Disney's most beloved characters. Visit White Caps on Deck 4, Forward, where you'll find a specially designed sterling silver charm featuring a Disney Cruise Line ship.

### DISNEY PINS SPECIAL OFFER

Fans of Disney Pins can swing by Mickey's Mainsail, Deck 4 Forward, for a wide selection of Disney and Disney Cruise Line trading pins. Purchase a Mystery Disney Cruise Line Anchor Pin for \$4.95 with any merchandise purchase of \$30.00 or more. While supplies last. Restrictions apply. Offer subject to change without notice.

### HAIR BRAIDING ONBOARD

Add some flair to your hair when you visit a Disney Cruise Line® hair braiding station! Stop by a station today for more information and to learn all about the available braiding styles. Subject to restrictions and availability. Deck 9, Midship.

### STYLISH SUNGLASSES

Visit White Caps to gear up to face the sun with stylish sunglasses designed by popular brands such as Marc Jacobs and Maui Jim. Stop by and select a pair today! Deck 4, Forward.

### SOPHIA FIORI DIAMOND TRUNK SHOW

Sophia Fiori is an LA based designer, wholesaler, and one of Hollywood's favorite designers. Industry leaders in colored diamonds, and more specifically Caribbean blue diamonds – one of the single most popular purchases at sea because it reminds everyone of the colors of the Breathtaking Ocean! White Caps, Deck 4, Forward.

Due to port regulations, when the ship is docked, the stores will remain closed.



### PAMPER PACKAGE

\*50 minute Full Body Massage \*Foot and Ankle Massage  
\*Indian Scalp Massage \*25 Minute Booster Facial  
Only \$149

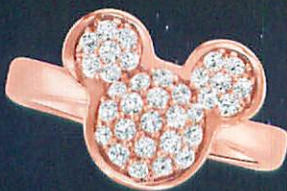
Deck 9, Forward - Phone : 7-1465

## DISNEY INSPIRED DIAMOND COLLECTION

by SOPHIA FIORI

WHITE CAPS, DECK 4, FORWARD

(ONLY AVAILABLE ONBOARD)



## GET THE PICTURE!

Order a Get the Picture! photo disc and share your vacation memories digitally! No need to decide which photos to take home now, select your photos from the comfort of your home. Print, send and share your photos easily! Hurry, as supplies are limited.

\*Terms and conditions apply. Photos captured on your vacation are only available for purchase during this cruise.

## IMPORTANT INFORMATION

### Security Notice

All Guests (including Children) who wish to disembark or embark the ship are required to present their Key to the World card at the gangway. A photo ID is also required for those Guests who are 18 years of age or older. Guests under the age of 18 are required to have a parent, guardian or other responsible adult sign an authorization form at the Guest Service Desk if they wish to go ashore unaccompanied or with any adult from another stateroom.

**Sunscreen/Insect Repellent Advisory**  
Use sunscreen first and protect against mosquito bites and related illnesses by applying insect repellent on top of sunscreen when going ashore. Insect repellent is available for purchase in White Caps.

### Cold and Flu Reminder

Please wash hands frequently and thoroughly, particularly before meals. Contact the Health Center by dialing 7-1923, should anyone in your party become ill.

### Inclement Weather

For the safety of all Guests, outdoor events may be changed due to unforeseen weather conditions.

### Corridor Quiet Hours

As a courtesy to all our Guests, please recognize quiet hallway hours from 10:00 p.m. til 8:00 a.m.

### Environmental Message

With Disney's commitment to the Environment please refrain from throwing anything over the Ship's side. Thank you.

### No Reserved Seats Policy

As a courtesy to all Guests we kindly advise that the saving of seats is not permitted in the Walt Disney Theatre, and the saving of the sun loungers is not permitted on Deck 9 and 10. Items left unattended will be returned to lost and found at Guest Services, Deck 3, Midship.

### Smoking

For the comfort of our guests, the following areas are designated as smoking areas:  
• Deck 10 Forward, Starboard Side  
• Deck 9, Forward, Starboard Side at Quiet Cove  
• Deck 4, Starboard Side from 6:00 p.m. to 6:00 a.m. only (all of Deck 4 is non-smoking from 6:00 a.m. to 6:00 p.m.)  
Smoking is prohibited inside all guest staterooms and on stateroom verandahs. Guests found smoking in their staterooms or on their verandahs will be charged a \$250 stateroom recovery fee.

### Walt Disney Theatre

Theatrical performances may use artificial fog, strobe lights, pyrotechnics and other special effects. For the safety of our performers and the comfort of those around you, the use of any photography or video recording device or any electronic equipment is prohibited.

### Verandah Safety

Please do not leave any combustible materials on your balcony when not present in your stateroom for safety reasons.



MONDAY, MAY 11, 2015 - KEY WEST, FLORIDA

# BUENA VISTA THEATRE

Deck 5, Aft

Open Captioning



8:30 am Duration: 1 hr 21 mins Rating: PG	10:15 am Duration: 1 hr 52 mins Rating: PG	12:45 pm Duration: 1 hr 21 mins Rating: G	3:00 pm Duration: 2 hrs 9 mins Rating: PG	5:30 pm & 8:15 pm Duration: 1 hr 48 mins Rating: PG	10:30 pm Duration: 1 hr 52 mins Rating: PG
-------------------------------------------------	--------------------------------------------------	-------------------------------------------------	-------------------------------------------------	-----------------------------------------------------------	--------------------------------------------------

## Character Appearances

**DOC MCSTUFFINS**  
Deck 4, Midship (S)  
9:00 am & 10:00 am

**PRINCESS SOFIA**  
Deck 4, Midship (S)  
9:30 am & 10:30 am

**CAPTAIN AMERICA**  
Preludes  
10:15 am & 12:00 pm

**PRINCESS TIANA**  
Lobby Atrium (P)  
5:15 pm & 9:45 pm

**CAPTAIN HOOK**  
Deck 4, Midship (S)  
5:15 pm

**PETER PAN**  
Deck 4, Midship (S)  
5:45 pm

**CINDERELLA**  
Lobby Atrium (P)  
5:45 pm & 10:15 pm

**GOOFLY**  
Deck 4, Midship (S)  
7:15 pm

**MINNIE MOUSE**  
Lobby Atrium (P) - 7:30 pm

**PLUTO**  
Deck 4, Midship (S) - 7:45 pm

**MICKEY MOUSE**  
Lobby Atrium (P) - 8:00 pm

**CHIP & DALE**  
Deck 4, Midship (S) - 9:45 pm

**DAISY DUCK**  
Deck 4, Midship (S) - 10:15 pm



(P) - Portside, (S) - Starboard Side

Don't forget your Camera to capture those Magical Moments!

Check here each day for Character appearances.

For detailed Character appearance information see the Character Information Board in the Lobby Atrium.

Meet-and-Greets will be advertised for the length of time the line will be open. To avoid disappointment, please meet at start time of appearances.

## YOUTH ACTIVITIES THEMED EXPERIENCES

**CLUBHOUSE SERIES**  
focuses on movement and features content which appeals to younger children.

**STORYBOOK SERIES**  
is designed with a strong connection to the Disney classic stories.

**JUMP UP! SERIES**  
includes large group games & movement-oriented activities.

**CREATE & INVENT SERIES**  
will have a tactile focus allowing children to create and admire their work.

**IN THE SPOTLIGHT SERIES**  
focuses on children's stage presence with lots of activities and enthusiasm.

**SOLVE IT! SERIES**  
are less active, but will challenge children with problem/solutions-based activities.

### YOUTH ACTIVITIES OPEN HOUSE

Activities for families, adults and children of all ages to enjoy together.

## SHIP DIRECTORY

### YOUTH ACTIVITIES

DISNEY'S OCEANEER CLUB	DECK 5, MID	9:00 AM - 12:00 PM
DISNEY'S OCEANEER LAB	DECK 5, MID	9:00 AM - 12:00 PM
EDGE	DECK 2, MID	10:00 AM - 1:00 PM
IT'S A SMALL WORLD NURSERY	DECK 5, AFT	9:00 AM - 11:00 PM
VIBE	DECK 10, MID	10:30 AM - 2:00 PM

### POOLS

\*Children under 12 years of age must have adult supervision in all pools.

AQUADUNK	DECK 10, MID	9:00 AM - 12:00 PM 12:45 PM - 7:15 PM 8:00 PM - 9:00 PM
AQUALAB	DECK 9, AFT	8:30 AM - 8:00 PM
GOOFLY'S POOL	DECK 9, MID	9:00 AM - 6:00 PM 8:00 PM - 10:00 PM
NEPHEWS' SPLASH ZONE	DECK 9, AFT	8:30 AM - 6:00 PM
QUIET COVE POOL (18+)	DECK 9, FWD	8:00 AM - 10:00 PM
Twist 'n' Spout	DECK 9, AFT	9:00 AM - 9:00 PM

Complimentary pool vests are available for children to use in the pools onboard. They are located on the pool deck.

### RECREATION

PORT ADVENTURES DESK	DECK 3, MID	9:00 AM - 1:00 PM 7:00 PM - 8:30 PM
SENSES FITNESS CENTER (18+)	DECK 9, FWD	6:30 AM - 10:00 PM
WIDE WORLD OF SPORTS DECK	DECK 10, FWD	24 HOURS

### GENERAL INFORMATION

BUENA VISTA THEATRE	DECK 5, AFT	SHOWTIMES
DISNEY VACATION CLUB DESK	DECK 4, MID	9:00 AM - 12:00 PM 5:00 PM - 10:00 PM
ONBOARD SALES DESK	DECK 4, MID	9:30 AM - 12:00 PM 7:30 PM - 8:30 PM 9:30 PM - 10:30 PM

FUNNEL VISION	DECK 9, MID	SHOWTIMES
GUEST SERVICES	DECK 3, MID	24 HOURS
HAIR BRAIDING	DECK 9, MID	4:00 PM - 6:00 PM 7:00 PM - 10:00 PM
MEDICAL HEALTH CENTER	DECK 1, FWD	9:30 AM - 11:00 AM 4:30 PM - 7:00 PM
PORT & SHOPPING DESK	DECK 3, MID	7:30 PM - 8:30 PM
PRELUDES	DECK 4, FWD	5:30 PM - 9:00 PM
QUARTER MASTERS (ARCADE)	DECK 9, MID	24 HOURS
SENSES SPA AND SALON	DECK 9, FWD	8:00 AM - 10:00 PM
SHUTTERS PHOTO GALLERY	DECK 4, AFT	9:00 AM - 11:30 AM 7:30 PM - 11:00 PM

TODDLER AREA (PROMENADE LOUNGE)	DECK 3, AFT	24 HOURS
WALT DISNEY THEATRE	DECK 4, FWD	SHOWTIMES

### SHOPPING

MICKEY'S MAINSAIL	DECK 4, FWD	8:00 AM - 10:30 AM 8:30 PM - 11:00 PM
QUACKS	DECK 9, MID	
SEA TREASURES	DECK 3, FWD	8:30 PM - 11:00 PM
VISTA GALLERY	DECK 4, MID	8:30 PM - 11:00 PM
WHITE CAPS	DECK 4, FWD	8:00 AM - 10:30 AM 8:30 PM - 11:00 PM

## IMPORTANT NUMBERS

Fire/Security: 7-3001  
Medical EMERGENCY: 7-3000  
Health Center: 7-1923

**DINNER MENU**  
 Animator's Palate : Pacific Rim Cuisine  
 Carioca's : South American Cuisine  
 Lumiere's : French Cuisine

**DRINK OF THE DAY**  
 Espresso Chiller (Non-Alcoholic)  
 Key Lime Margarita (Alcoholic)

**WEATHER FORECAST**  
 Today: Sunny  
 High: 80°F/27°C  
 Tomorrow: Partly Sunny  
 High: 78°F/26°C

## DINING & LOUNGES

### BREAKFAST

CABANAS	DECK 9, AFT	7:30 AM - 11:30 AM
DAISY'S DE LITES	DECK 9, AFT	7:00 AM - 9:00 AM
LUMIERE'S (Brunch)	DECK 3, MID	8:30 AM - 11:30 AM

### LUNCH

CABANAS	DECK 9, AFT	11:30 AM - 2:00 PM
DAISY'S DE LITES	DECK 9, AFT	11:00 AM - 6:00 PM
LUMIERE'S (Brunch)	DECK 3, MID	8:30 AM - 11:30 AM
PALO (BRUNCH)	DECK 10, AFT	9:30 AM - 11:30 AM
PETE'S BOILER BITES	DECK 9, AFT	11:00 AM - 6:00 PM
PINOCCHIO'S PIZZERIA	DECK 9, MID	11:00 AM - 6:00 PM

### DINNER

ANIMATOR'S PALATE	DECK 4, AFT	5:45 PM & 8:15 PM
CABANAS TABLE SERVICE	DECK 9, AFT	6:30 PM - 8:30 PM
CARIOCA'S	DECK 3, AFT	5:45 PM & 8:15 PM
LUMIERE'S (À-La CARTE)	DECK 3, MID	5:45 PM & 8:15 PM
PALO (FOR RESERVATIONS CALL 7-6843)	DECK 10, AFT	6:00 PM - 8:30 PM
PETE'S BOILER BITES	DECK 9, AFT	6:00 PM - 10:00 PM

### LATE NIGHT SNACKS

O'GILLS PUB	DECK 3, FWD	10:45 PM - 11:45 PM
PINOCCHIO'S PIZZERIA	DECK 9, MID	9:30 PM - 12:00 AM
PROMENADE LOUNGE	DECK 3, AFT	10:45 PM - 11:45 PM

### ADDED FEATURES

EYE SCREAM	DECK 9, AFT	11:00 AM - 11:00 PM
BEVERAGE STATION	DECK 9, AFT	24 HOURS
ROOM SERVICE	DIAL 7-4330	24 HOURS

## ENTERTAINMENT - LOUNGES - BARS

Adults must be 21 and older to consume alcoholic beverages.

AFTER HOURS	DECK 3, FWD	(AFTER 9:00 PM. ADULTS ONLY)
COVE CAFE (18+)	DECK 9, MID	6:30 AM - 12:00 AM
D LOUNGE	DECK 4, MID	SHOWTIMES
FATHOMS (18+)	DECK 3, FWD	7:00 PM - 2:00 AM
FROZONE TREATS	DECK 9, AFT	10:00 AM - 6:00 PM
INTERNET CAFE	DECK 3, AFT	24 HOURS
KEYS (18+)	DECK 3, FWD	6:00 PM - 12:30 AM
O'GILLS PUB (18+)	DECK 3, FWD	12:00 PM - 12:30 AM
PRELUDES	DECK 4, FWD	5:30 PM - 9:00 PM
PROMENADE LOUNGE	DECK 3, AFT	8:00 AM - 12:00 AM
PINOCCHIO'S PIZZERIA	DECK 9, MID	9:00 AM - 12:00 AM
SIGNALS (18+)	DECK 9, FWD	9:30 AM - 11:00 PM

Public Health Advisory: Consuming raw or undercooked meats, poultry, seafood, shellfish, or eggs may increase your risk for foodborne illness, especially if you have certain medical condition.

All Ashore: Approx. 12:30 pm  
All Aboard: 7:30 pm

Ship's Agent in Key West

P.O. Box 285, Key West, FL 33041

Ms. Julie Kostick

T: 605 294 3288; Mobile: 305 797 0853



Morning	8:30	8:45	9:00	9:15	9:30	9:45	10:00	10:15	10:30	10:45	11:00	11:15	11:30	11:45	12:00	12:15	12:30	12:45	1:00	1:15	1:30									
FUNNEL VISION	Cars (G) Funnel Vision										Toy Story (G) Funnel Vision																			
BUENA VISTA THEATRE	Alexander... Very Bad Day (PG) Duration: 1 Hour 21 Minutes										Cinderella (2015) (PG)  Open Captioning Duration: 1 Hour 52 Minutes										Monkey Kingdom (G) Duration: 1 Hour 21 Minutes									
CHARACTERS	Doc McStuffins DK4 Mid (S)					Doc McStuffins DK4 Mid (S)					Captain America Preludes																			
						Sofia DK4 Mid (S)					Sofia DK4 Mid (S)					Captain America Preludes														
FUN FOR ALL AGES			Animation Mickey Mouse Promenade Lounge		Animation Goofy Promenade Lounge		Walking Ship Tour Buena Vista Theatre		Bingo Pre Sales				Disney Trivia Promenade Lounge																	
									Xbox®: Family Feud O'Gills Pub		Key West Highlights Promenade Lounge		Poolside Jams with Cruise Staff DJ Deck 9 Stage																	
ADULTS	Friends of Bill W. Keys		Art of The Theme Show Tour Palo										Disney Innovations - Animation O'Gills Pub		Brainteasers Trivia O'Gills Pub															
	Boot Camp (Nom. Fee) Senses Spa Fitness Center		Seminar: Ultimate Hair Cut Senses Spa Fitness Center		Detox Health & Weight Loss Senses Spa Fitness Center		Disney Vacation Club Group Preview D Lounge					Pamper Party Senses Spa Fitness Center																		
VIBE 14-17 YEARS OLD											Youth Activities Open House					Animation Cells														
EDGE 11-14 YEARS OLD											Youth Activities Open House					Craft Corner														
OCEANEER LAB 3-12 YEARS OLD											Youth Activities Open House					Goofy Files					Lunch									
											Animation Cells																			
OCEANEER CLUB 3-12 YEARS OLD											Mickey's Puzzle Playtime					Stitch's Great Adventure					Scavenger Hunt					Youth Activities Open House				
																										Craft Corner				
Afternoon	1:45	2:00	2:15	2:30	2:45	3:00	3:15	3:30	3:45	4:00	4:15	4:30	4:45	5:00	5:15	5:30	5:45	6:00	6:15	6:30	6:45									
FUNNEL VISION	The Lion King (G) Funnel Vision										Hercules (G) Funnel Vision										Bedknobs and Broomsticks Funnel Vision									
BUENA VISTA THEATRE											McFarland, USA (PG) Duration: 2 Hours 9 Minutes										Big Hero 6 (PG) Duration: 1 Hour 48 Minutes									
CHARACTERS																					Tiana Lobby Atrium (P)		Cinderella Lobby Atrium (P)							
																					Cpt. Hook DK4 Mid (S)		Peter Pan DK4 Mid (S)							
FUN FOR ALL AGES	Pictionary Challenge O'Gills Pub		Crafts: Origami Favorites Promenade Lounge				Cruisin' for Trivia Promenade Lounge				Toddler Time Promenade Lounge				Live Music with The Dreamers Lobby Atrium		Live Piano With Joe Creamer Promenade Lounge													
													Lobby Atrium (12+)																	
ADULTS											Tequila & Margarita Tasting (21+) Keys					Club 18*21: Jenga Challenge O'Gills Pub														
																Pure Form Pilates Senses Spa Fitness Center														
VIBE 14-17 YEARS OLD	Teen Choice				Chess and Checkers Challenge				Scavenger Hunt				Sports Deck Fun				Youth Activities Open House													
EDGE 11-14 YEARS OLD	Video Game Challenge				Scavenger Hunt				Sports Deck Fun				Brain Teasers				Scattagories													
OCEANEER LAB 3-12 YEARS OLD	4 Square Competition		Super Sloppy Science				Marshmallow Olympics				Parachute Games				Dinner															
OCEANEER CLUB 3-12 YEARS OLD	Youth Activities Open House										Little Einstein's Adventure										Dinner									
	Become Iron Man!						Face Paint Time																							
Evening	7:00	7:15	7:30	7:45	8:00	8:15	8:30	8:45	9:00	9:15	9:30	9:45	10:00	10:15	10:30	10:45	11:00	11:15	11:30	11:45	12:00									
FUNNEL VISION	Brother Bear (G) Funnel Vision										Remember the Titans (PG) Funnel Vision																			
BUENA VISTA THEATRE											Big Hero 6 (PG) Duration: 1 Hour 48 Minutes											Cinderella (2015) (PG) Duration: 1 Hour 52 Minutes								
CHARACTERS						Minnie Lobby Atrium (P)					Pluto Lobby Atrium (P)					Tiana Lobby Atrium (P)		Cinderella Lobby Atrium (P)												
						Goofy DK4 Mid (S)					Chip & Dale DK4 Mid (S)					Daisy DK4 Mid (S)														
FUN FOR ALL AGES	Bingo Pre Sales		Senses Spa BINGO Fathoms																											
	Saludos Amigos Fiesta D Lounge								Live Music with Daria & Roberto Promenade Lounge				Live Music with Daria & Roberto Promenade Lounge																	
ADULTS	Dave Sharp LIVE O'Gills Pub		Brainteasers Trivia O'Gills Pub		Dave Sharp LIVE O'Gills Pub		Wii Challenge O'Gills Pub		Cruise Staff DJ Fathoms		Pub Quiz O'Gills Pub		The Comedy and Magic of JOHN CASSIDY Fathoms		ROCKIN' ROWDY! Fathoms		Cruise Staff DJ Fathoms		Live Guitar with Dave Sharp O'Gills Pub											
											Tribute to the Rat Pack with Nick Messina Keys					Live Music with Joe Creamer Keys					Nick Messina Live Keys		Club 18*21 Fathoms							
VIBE 14-17 YEARS OLD											Smoothie Hour					Pump It Up					That's Hilarious									
EDGE 11-14 YEARS OLD											Youth Activities Open House					Ninja					Crowning of the Couch Potato									
OCEANEER LAB 3-12 YEARS OLD											Magic Show					Who Wants to be a Mouseketeer? Lights, Camera, Improv!					Disney Infinity									
OCEANEER CLUB 3-12 YEARS OLD											Marvel Avengers Academy					Become Iron Man!					Relay Games									

Symbol for activities that will be repeated during the cruise

FOLD

Fold along the dotted lines and take me with you so you don't miss any of the fun!

FOLD

IN THE SPOTLIGHT SERIES  
SOLVE IT! SERIES

CLUB UP! SERIES  
CREATE & INVENT SERIES  
OPEN HOUSE

CLUBHOUSE SERIES  
STORYBOOK SERIES