

PERSONAL NAVIGATOR

MONDAY, JANUARY 19, 2015

Sunrise 7:13 am Sunset: 6:03 pm
Evening Attire: Cruise Casual
All Ashore: 12:30 pm
All Aboard: 7:30 pm
Today: Sunny High: 72°F/22°C
Tomorrow: Partly Cloudy High: 76°F/24°C

KEY WEST, FLORIDA

the Magic DAVE SHOW

WALT DISNEY THEATRE

Deck 4, Forward,

6:15 pm & 8:30 pm

As a courtesy to all Guests, we kindly advise that the saving of seats is **not** permitted in the Walt Disney Theatre



MARTIN LUTHER KING DAY

Welcome to Key West

The U.S. government acquired Key West from Spain in the early 1800s. During those days, most of the isolated islanders made their living as wreckers and pirates, diving for the booty from ships that wrecked on the coral reefs offshore.

In the early 1930s Key West was recognized as a resort town and hotels, restaurants, bars sprang up around the island. For about 6 months business was wonderful until a hurricane tore up the railroad and rendered the island helpless.

The State of Florida and the Federal Government took over and began the work of rehabilitation, particularly directed toward development of tourist facilities and attractions.

The number one business here is tourism and a laid back kind of fun. But only in Key West does the sun shine the brightest when it sets.

Everyone gathers for the never planned, always varied Sunset Celebration on the Mallory Dock. Once the sun is safely tucked away by jugglers, mimes, musicians and street artists, the city moves to a different beat.

SALUDOS AMIGOS FIESTA

FAMILY DANCE PARTY

Come see what Donald and his friends are up to this time. Bring the family out to this interactive dance party featuring fun Latin music! Your family will learn to Salsa, Merengue and just have a Latin good time!

D Lounge,
Deck 4, Midship,
7:30 pm & 10:15 pm

Don't Miss:

The Ultimate Quest

Promenade Lounge, Deck 3, Aft - 10:45 am

Join us for this fast-paced scavenger hunt throughout the ship. Don't forget to bring your wave phones!

Chip-It Golf (12+)

Lobby Atrium, Deck 3, Midship - 4:00 pm

It's par for the course for our Guests 12 and older to compete on our special "greens" in this fun tournament.

Ultimate Disney Trivia (18+)

O'Gills Pub, Deck 3, Forward - 7:30 pm

Join us for the Ultimate test of your Disney Knowledge in this fun trivia.

Magic Quest

D Lounge, Deck 4, Midship - 9:45 pm

Enjoy the wildest and wackiest scavenger team event on the seven seas!

Match Your Mate (18+)

Fathoms, Deck 3, Forward - 10:30 pm

It's time to play everyone's favorite couples game show - Match Your Mate!



Please check your tickets for meeting times and locations. Visit the Port Adventure's Desk, Deck 3, Midship for any questions.

DINNER MENU

Animator's Palate : Pacific Rim Cuisine
Carioca's : South American Cuisine
Lumiere's : French Cuisine

DRINK OF THE DAY

Key Lime Margarita (Alcoholic)
Passion Cream Freeze (Non-Alcoholic)

IMPORTANT NUMBERS

Fire/Security: 7-3001
Medical Emergency: 7-3000
Health Center: 7-1923

ADULT ACTIVITY HIGHLIGHTS



SENSES SPA FITNESS CLASSES & SEMINARS

Sunrise Stretch - Senses Spa Fitness Center - 7:00 am
Group Cycling - Senses Spa Fitness Center - 8:00 am
Body Sculpt Boot Camp (Nom. Fee) - Senses Spa Fitness Center - 9:00 am
Introduction to Acupuncture - Senses Spa Fitness Center - 10:00 am
Eat More to Weigh Less - Senses Spa Fitness Center - 11:00 am
Yoga - Senses Spa Fitness Center - 2:00 pm

TASTING CLASSES

Whiskey Tasting (21+) - Cove Cafe - 10:30 pm
 Please make reservations for tastings at Guest Services for a nominal fee.
 Tasting Seminars are only for Guests 21 and older.

CLUB
18*21

CLUB 18*21 - GAME CHALLENGE

O'Gills Pub, Deck 3, Forward - 5:15 pm

Join us and play some of your favorite board games.

CLUB 18*21 - SOCIAL

Fathoms, Deck 3, Forward - 10:15 pm

Come and socialize with your fellow cruisers

ART OF THE THEME SHOW TOUR

Palo, Deck 10, Aft - 9:00 am

Join us on a guided ship tour and discover the key ingredients that make the Disney Magic.



ANYONE CAN COOK - LOBSTER RAVIOLI

D Lounge, Deck 4, Midship - 10:30 am

From our galley to yours. Join our chefs as they show you how to prepare delicious dishes. Today's Menu - Lobster Ravioli

ULTIMATE DISNEY TRIVIA

O'Gills Pub, Deck 3, Forward - 7:30 pm

Join us for the Ultimate test of your Disney Knowledge in this fun trivia.



DISCO LEGENDS

Fathoms, Deck 3, Forward - 11:15 pm

Put on your platform shoes and hit the dance floor as we catch a disco fever. Our '70s dance party will have you spinning like a disco ball.

FUN FOR ALL AGES HIGHLIGHTS

TODDLER TIME

Promenade Lounge, Deck 3, Aft - 8:30 am & 4:30 pm

Join us for some fun activities that your toddler is sure to enjoy.

WALKING SHIP TOUR

Preludes, Deck 4, Forward - 10:00 am

Enjoy the beauty of the Disney Magic® with your Cruise Staff in this guided tour.

DIAMOND JACKPOT BINGO

Bingo Pre-Sales start at 10:30 am

Fathoms, Deck 3, Forward - 10:45 am

Join us for 4 cash prize games and your chance to win a diamond pendant! Everyone attending will also receive a voucher to collect a free Diamonds International charm bracelet! Pre-Sales start 15 minutes prior to the game.



DISNEY TRIVIA

Promenade Lounge, Deck 3, Aft - 11:30 am

Navigate your way through a round of questions to test how much you really know about Disney.

XBOX: FAMILY FEUD

O'Gills Pub, Deck 3, Forward - 1:45 pm

Survey says? Join us as we play a round of Family Feud!

CRUISIN' FOR TRIVIA

Promenade Lounge, Deck 3, Aft - 3:30 pm

Navigate your way through a round of questions testing your general knowledge.



CHIP-IT GOLF (12+)

Lobby Atrium, Deck 3, Midship - 4:00 pm

It's par for the course for our Guests 12 and older to compete on our special "greens" in this fun tournament.

FAMILY FUN JACKPOT BINGO

Bingo Pre-Sales start at 7:15 pm

Fathoms, Deck 3, Forward - 7:30 pm

Join your Cruise Staff as we play 4 cash prize games as well as raffle off great Disney Cruise Line prizes! Pre-Sales start 15 minutes prior to game.



SALUDOS AMIGOS FIESTA

D Lounge, Deck 4, Midship - 7:30 pm & 10:15 pm

Come see what Donald and his friends are up to this time. Bring the family out to this interactive dance party featuring fun Latin music! Your family will learn to salsa, merengue and just have a Latin good time!



FAMILY SUPERSTAR KARAOKE

D Lounge, Deck 4, Midship - 10:45 pm

Join your Cruise Staff in D Lounge tonight and sing along to your favorite song - fun for everyone.



YOUTH ACTIVITIES HIGHLIGHTS

DINE & PLAY

As a convenience for families dining at 8:15 pm, our Youth Activities Counselors will be available at 9:15 pm at the entrance of Lumiere's and Carioca's and at 9:30 pm at the entrance of Animator's Palate to bring registered children to join the fun in Disney's Oceaneer Club and Disney's Oceaneer Lab.



Deck 5, Aft (7-5864)

8:30 am - 11:00 pm

Infants and Toddlers can enjoy toys and activities at It's a small world nursery. Reservations are first come, first served so please stop by!



Deck 5, Midship (7-1439)
(3-12 years old)

9:00 am - 12:00 am

MICKEY'S PUZZLE PLAYTIME

9:15 am

Come and play with Mickey & friends as they share their favorite games, puzzles and dances!

STITCH'S GREAT ADVENTURE

10:30 am

Stitch needs your help in trying to capture ten of his lost cousins before they cause all kinds of problems on the ship!



Deck 5, Midship (7-1445)
(3-12 years old)

9:00 am - 12:00 am

GOOFY FILES

11:00 am

This fascinating activity takes you into the invisible world of forensics where you will discover different ways to identify the suspect of a crime.

MAGIC SHOW

7:30 pm

The Magnificent Magician will demonstrate to you some of the best known magic tricks on the sea.



Deck 2, Midship (7-5816)
(11-14 years old)

10:00 am - 1:00 am

SPORTS DECK FUN

4:00 pm

Take over the Sports Deck with some fun and friendly competition.

PISTON CUP CHALLENGE

12:00 am

It's Dinoco time and you're part of the pit crew! Design your own race car and see if you've got what it takes to end up in the winner's circle!



Deck 10, Midship (7-18517)
(14-17 years old)

10:30 am - 2:00 am

ANIMATION CELLS

12:00 pm

Learn what it takes to be a Disney Animator, then put your new skills to the test as you create your very own animation cell.

THAT'S HILARIOUS

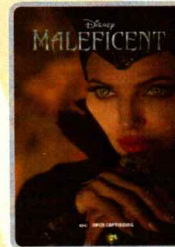
10:30 pm

Ever wanted to show off your comedy skills? Then be a part of the cast for the crazy improv show "That's Hilarious" and put on a live show for your friends.

BUENA VISTA THEATRE

Deck 5, Aft
Today's Movies

cc Open Captioning



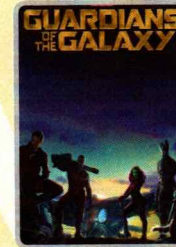
8:30 am
Duration:
1 hr 37 mins
Rating: PG

DOLBY.3D



3:15 pm
Duration:
1 hr 37 mins
Rating: PG

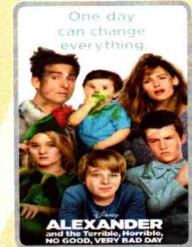
DOLBY.3D



10:30 am
Duration:
2 hrs 2 mins
Rating: PG-13



5:30 pm & 8:00 pm
Duration:
2 hrs 2 mins
Rating: PG



1:00 pm
Duration:
1 hr 21 mins
Rating: PG



10:30 pm
Duration:
2 hrs 2 mins
Rating: PG-13



KARAOKE

Join your Cruise Staff in D Lounge tonight and sing along to your favorite song, fun for everyone.

D Lounge,
Deck 4, Midship,
10:45 pm



ADULT GAME SHOW

It's time to play everyone's favorite couple's game show, Match your Mate!

Fathoms (18+),
Deck 3, Forward
10:30 pm

YOUTH ACTIVITIES OPEN HOUSE

Open House is an opportunity for all to come and participate in a variety of exciting activities and free time in the Oceaneer Club, Oceaneer Lab, it's a small world nursery, Vibe and Edge throughout the cruise. During these times secured programming will still be offered in the other venue for those looking to check their children into care.

Edge: 10:00 am - 11:30 am & 7:30 pm - 9:00 pm

Vibe: 10:30 am - 12:00 pm & 6:00 pm - 7:30 pm

Disney's Oceaneer Club: 12:30 pm - 4:00 pm

Disney's Oceaneer Lab: 9:00 am - 10:30 am & 10:30 pm - 12:00 am

MORE TO ENJOY WHILE ONBOARD



EASTERN, WESTERN & SOUTHERN CARIBBEAN

Disney Cruise Line offers a variety of 7-night sailings to exotic ports in the Eastern or Western Caribbean – including our new Eastern Caribbean port Tortola, in the British Virgin Islands. Or visit beautiful Martinique on our four limited-time Southern Caribbean sailings aboard the Disney Wonder – back by popular demand! Visit the Onboard Sales Desk for more information. Remember to ask about our special onboard booking offer!



DISNEY VACATION CLUB

Visit the Disney Vacation Club information desk and ask us about show times where you will learn how to turn every vacation into the vacation of a lifetime.



PORT & SHOPPING INFORMATION

Join Maureen, your Port Shopping Guide, at 10:00 am in O'Gills Pub, Deck 3, Forward, for this not to be missed presentation on Key West Highlights. You do not want to miss out on the unbelievable shopping in Key West. Enter a raffle to win a beautiful piece of jewelry. Everyone in attendance will receive an exclusive charm.



IONITHERMIE

Super Detox Treatments

Lose between 1 – 8 inches, speed up your metabolism, rid off puffiness, smooth your skin and firm your muscle without any pain of hard exercise

1 Session for \$155, 3 Sessions for \$299.00

Deck 9, Forward - Phone : 7-1465

B U C K L E Y
L O N D O N



Receive a complimentary gift of a Luxury Bouton Passport Cover or Buckley London One Carat Earrings with every purchase of \$300 or more. While supplies last.

**WHITE CAPS
DECK 4, FORWARD**



GET THE PICTURE!

Order a Get the Picture! photo disc and share your vacation memories digitally! No need to decide which photos to take home now, select your photos from the comfort of your home. Print, send and share your photos easily! Hurry, as supplies are limited.

**Terms and conditions apply. Photos captured on your vacation are only available for purchase during this cruise.*

Connect @ Sea

We are now offering a NEW and improved Internet service to stay connected on your cruise like no other in the industry! Internet packages range from \$0.25 per MB - \$89.00 (1000 MB package). For more information contact your Connect@Sea Expert or Guest Services onboard.

ONBOARD AIRLINE CHECK IN

Stop by the Guest Services Desk, Deck 3, Midship to find out about enrolling in our Onboard Airline Check In Service.

TRANSPORTATION INFORMATION

Should you wish to purchase transportation to Orlando International Airport, kindly proceed to Guest Services, Deck 3, Midship for further assistance.



Key West is an exciting port of call not far off the coast of the continental

United States. As the largest island in Florida, Key West measures 4 miles long and 2 miles wide and is a tourist destination made famous in the last century for being the residence and occasional inspiration for notable writers Ernest Hemingway and Tennessee Williams. The island represents the southernmost point in the continental U.S., and because of proximity to the Gulf Stream, enjoys a mild tropical climate. Many memories await, what's your adventure?

Port Adventures Desk, Deck 3, Midship.

SHOPPING

THOMAS KINKADE ART AT THE VISTA GALLERY

Thomas Kinkade, also known as "The Painter of Light," is one of Disney's most popular and beloved artists. Visit the Vista Gallery to view some of his original dreamlike interpretations of your favorite Disney characters. Deck 4, Midship.

DISNEY PINS SPECIAL OFFER

Fans of Disney Pins can swing by Mickey's Mainsail, Deck 4 Forward, for a wide selection of Disney and Disney Cruise Line trading pins. Purchase a Mystery Disney Cruise Line Anchor Pin for \$4.95 with any merchandise purchase of \$30.00 or more. While supplies last. Restrictions apply. Offer subject to change without notice.

STYLISH SUNGLASSES

Visit White Caps to gear up to face the sun with stylish sunglasses designed by popular brands such as Marc Jacobs and Maui Jim. Stop by and select a pair today! Deck 4, Forward.

SPECIAL OFFER BY BUCKLEY JEWELRY

Add the finishing touch to your dinner outfit with a stylish piece from Buckley Jewelry. Available in White Caps, Deck 4, Forward, where you can receive a complimentary gift of a Luxury Bouton Passport Cover or stunning Buckley London One Carat Earrings with every purchase of \$300 or more. While supplies last.

CRUISE IN STYLE WITH GUESS ACCESSORIES

Head to White Caps for the ultimate destination of fashionable brand name accessories such as Guess watches, sunglasses, and handbags. Discover the elegant men's and women's watches paired with two-tone, silver, gold, and black-colored bands, with selected styles sparkling with Swarovski crystals. Complement your style with one of the various handbags available, adorned with the iconic Guess logo. Top off your look with a pair of stylish sunglasses and you're ready for day at the port! White Caps, Deck 4, Forward.

Due to port regulations, when the ship is docked, the stores will remain closed.

IMPORTANT INFORMATION

Security Notice

All Guests (including Children) who wish to disembark or embark the ship are required to present their Key to the World card at the gangway. A photo ID is also required for those Guests who are 18 years of age or older. Guests under the age of 18 are required to have a parent, guardian or other responsible adult sign an authorization form at the Guest Service Desk if they wish to go ashore unaccompanied or with any adult from another stateroom.

Sunscreen/Insect Repellent Advisory

Use sunscreen first and protect against mosquito bites and related illnesses by applying insect repellent on top of sunscreen when going ashore. Insect repellent is available for purchase in White Caps.

Cold and Flu Reminder

Please wash hands frequently and thoroughly, particularly before meals. Contact the Health Center by dialing 7-1923, should anyone in your party become ill.

Inclement Weather

For the safety of all Guests, outdoor events may be changed due to unforeseen weather conditions.

Corridor Quiet Hours

As a courtesy to all our Guests, please recognize quiet hallway hours from 10:00 p.m. til 8:00 a.m.

Environmental Message

With Disney's commitment to the Environment please refrain from throwing anything over the Ship's side. Thank you.

No Reserved Seats Policy

As a courtesy to all Guests we kindly advise that the saving of seats is not permitted in the Walt Disney Theatre, and the saving of the sun loungers is not permitted on Deck 9 and 10. Items left unattended will be returned to lost and found at Guest Services, Deck 3, Midship.

Smoking

For the comfort of our guests, the following areas are designated as smoking areas:
• Deck 10 Forward, Starboard Side
• Deck 9, Forward, Starboard Side at Quiet Cove
• Deck 4, Starboard Side from 6:00 p.m. to 6:00 a.m. only (all of Deck 4 is non-smoking from 6:00 a.m. to 6:00 p.m.)
Smoking is prohibited inside all guest staterooms and on stateroom verandahs. Guests found smoking in their staterooms or on their verandahs will be charged a \$250 stateroom recovery fee.

Walt Disney Theatre

Theatrical performances may use artificial fog, strobe lights, pyrotechnics and other special effects. For the safety of our performers and the comfort of those around you, the use of any photography or video recording device or any electronic equipment is prohibited.

Verandah Safety

Please do not leave any combustible materials on your balcony when not present in your stateroom for safety reasons.

Morning	8:30	8:45	9:00	9:15	9:30	9:45	10:00	10:15	10:30	10:45	11:00	11:15	11:30	11:45	12:00	12:15	12:30	12:45	1:00	1:15	1:30				
FUNNEL VISION	A Goofy Movie (G) Funnel Vision					Cars (G) Funnel Vision					Toy Story (G) Funnel Vision														
BUENA VISTA THEATRE	Maleficent (PG) Open Captioning Duration: 1 Hour 37 Minutes					Guardians of the Galaxy (PG-13) DOLBY 3D Duration: 2 Hours 2 Minutes					Alexander....Very Bad Day (PG) Duration: 1 Hour 21 Minutes														
CHARACTERS	Doc McStuffins Dk 4, Mid				Doc McStuffins Dk 4, Mid		Captain America Preludes																		
			Sofia Dk 4, Mid				Sofia Dk 4, Mid						Captain America Preludes												
FUN FOR ALL AGES	Toddler Time Promenade Lounge 		Animation Mickey Mouse Promenade Lounge		Animation Goofy Promenade Lounge		Walking Ship Tour Preludes		Bingo Pre-Sales		Diamond Jackpot BINGO Fathoms		Disney Trivia Promenade Lounge						Little Einstein's Adventure Disney's Oceaneer Club						
							Key West Highlights O'Gills Pub				The Ultimate Quest Promenade Lounge 														
ADULTS	Friends of Bill W. Keys		Art of The Theme Show Tour Palo 						ANYONE CAN COOK D Lounge		Know It All Trivia O'Gills Pub														
			Boot Camp (Nom. Fee) Senses Spa Fitness Center																						
VIBE 14-17 YEARS OLD						Youth Activities Open House					Animation Cells														
EDGE 11-14 YEARS OLD						Youth Activities Open House					Craft Corner														
OCEANEER LAB 3-12 YEARS OLD						Youth Activities Open House					Goofy Files					Lunch									
						Animation Cells																			
OCEANEER CLUB 3-12 YEARS OLD						Mickey's Puzzle Playtime					Stitch's Great Adventure					Scavenger Hunt					Youth Activities Open House				
																					Little Einstein's Adventure				
Afternoon	1:45	2:00	2:15	2:30	2:45	3:00	3:15	3:30	3:45	4:00	4:15	4:30	4:45	5:00	5:15	5:30	5:45	6:00	6:15	6:30	6:45				
FUNNEL VISION	Tarzan (G) Funnel Vision					Monsters, Inc. (G) Funnel Vision					Bedknobs and Broomsticks Funnel Vision														
BUENA VISTA THEATRE						Maleficent (PG) DOLBY 3D Duration: 1 Hour 37 Minutes					The Hundred-Foot Journey (PG) Duration: 2 Hours 2 Minutes														
CHARACTERS											Mickey Preludes					Tiana Lobby Atrium (P)					Peter Pan Dk 4, Mid				
																Cpt. Hook Dk 4, Mid					Belle Lobby Atrium (P)				
FUN FOR ALL AGES	Xbox: Family Feud O'Gills Pub				Crafts: Origami Favorites Promenade Lounge				Cruisin' for Trivia Promenade Lounge		Chip it GOLF Lobby Atrium (12+)		Toddler Time Promenade Lounge 				Live Music with Duo Azucar Lobby Atrium		Showtime: Magic Dave Walt Disney Theatre		Wii Challenge O'Gills Pub				
	Become Iron Man! Disney's Oceaneer Club				Face Paint Time Disney's Oceaneer Club										Live Music with Rob Sanders Promenade Lounge										
ADULTS															Club 18*21 Game Challenge O'Gills Pub										
	Yoga Senses Spa Fitness Center																								
VIBE 14-17 YEARS OLD	Teen Choice					Chess and Checkers Challenge					Scavenger Hunt					Sports Deck Fun					Youth Activities Open House				
EDGE 11-14 YEARS OLD	Video Game Challenge					Scavenger Hunt					Sports Deck Fun					Brain Teasers					Scattagories				
OCEANEER LAB 3-12 YEARS OLD	4 Square Competition				Super Sloppy Science						Marshmallow Olympics				Parachute Games				Dinner						
OCEANEER CLUB 3-12 YEARS OLD	Youth Activities Open House															Aloha Luau									
	Become Iron Man!				Face Paint Time																				
Evening	7:00	7:15	7:30	7:45	8:00	8:15	8:30	8:45	9:00	9:15	9:30	9:45	10:00	10:15	10:30	10:45	11:00	11:15	11:30	11:45	12:00				
FUNNEL VISION						Ice Princess (G) Funnel Vision					Remember the Titans (PG) Funnel Vision														
BUENA VISTA THEATRE						The Hundred-Foot Journey (PG) Duration: 2 Hours 2 Minutes					Guardians of the Galaxy (PG-13) Duration: 2 Hours 2 Minutes														
CHARACTERS	Cinderella Preludes		Goofy Lobby Atrium (P)		Minnie Preludes		Stitch Lobby Atrium (P)				Chip & Dale Preludes		Stitch Preludes												
	Peter Pan Dk 4, Mid				Daisy Dk 4, Mid				Cpt. Hook Dk 4, Mid		Tiana Lobby Atrium (P)		Daisy Dk 4, Mid		Cinderella Lobby Atrium (P)										
FUN FOR ALL AGES	Bingo Pre-Sales		Family Fun Jackpot BINGO Fathoms				Showtime: Magic Dave Walt Disney Theatre				Magic Quest D Lounge 		Mickey Mouse D Lounge		Family KARAOKE D Lounge 										
			Saludos Amigos Fiesta D Lounge 								Live Music with Suzy and Alex Promenade Lounge				Live Music with Suzy and Alex Promenade Lounge										
ADULTS	Live Guitar O'Gills Pub		Ultimate Disney Trivia O'Gills Pub		Live Guitar O'Gills Pub		Wii Challenge O'Gills Pub				Pub Quiz O'Gills Pub		Club 18*21 Fathoms		MATCH Fathoms		Mickey Mouse Fathoms		Cruise Staff DJ Fathoms		Live Guitar O'Gills Pub				
			Live Piano with Nick Messina Keys				Live Music with Rob Sanders Keys		Cruise Staff DJ Fathoms																
VIBE 14-17 YEARS OLD	Open House		Smoothie Hour						Pump It Up						That's Hilarious				Gender Wars						
EDGE 11-14 YEARS OLD			Youth Activities Open House								Ninja				Crowning of the Couch Potato										
OCEANEER LAB 3-12 YEARS OLD			Magic Show								Lights, Camera, Improv!				Youth Activities Open House										
																	Disney Infinity								
OCEANEER CLUB 3-12 YEARS OLD			Marvel Avengers Academy						Become Iron Man!						Relay Games										

Symbol for activities that will be repeated during the cruise



FOLD

Fold along the dotted lines and take me with you so you don't miss any of the fun!

FOLD

IN THE SPOTLIGHT SERIES
SOLVE IT! SERIES

JUMP UP! SERIES
CREATE & INVENT SERIES
OPEN HOUSE

CLUBHOUSE SERIES
STORYBOOK SERIES

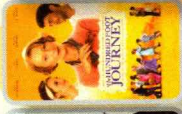
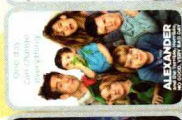
MONDAY, JANUARY 19, 2015 - KEY WEST, FLORIDA

BUENA VISTA THEATRE

Deck 5, Aft

Open Captioning

Dolby 3D



8:30 am
Duration: 1 hr 37 mins
Rating: PG
PG-13

3:15 pm
Duration: 1 hr 37 mins
Rating: PG
PG-13

5:30 pm & 10:30 pm
Duration: 2 hrs 2 mins
Rating: PG
PG-13

Character Appearances

DOC MCSTUFFINS
Deck 4, Midship
9:00 am & 10:00 am

PRINCESS SOFIA
Deck 4, Midship
9:30 am & 10:30 am

CAPTAIN AMERICA
Preludes
10:15 am & 12:00 pm

MICKEY MOUSE
Preludes - 4:45 pm

PRINCESS TIANA
Lobby Arrium (P)
5:15 pm & 9:45 pm

MINNIE MOUSE
Preludes - 5:15 pm

CAPTAIN HOOK
Deck 4, Midship
5:15 pm & 9:30 pm

PETER PAN
Deck 4, Midship
5:45 pm & 7:15 pm

BELLE
Lobby Arrium (P) - 5:45 pm

CINDERELLA
Preludes - 7:15 pm
Lobby Arrium (P) - 10:15 pm

GOOFY
Lobby Arrium (P) - 7:30 pm

PRINCESS MINNIE
Preludes - 7:45 pm

DAISY DUCK
Deck 4, Midship
7:45 pm & 10:00 pm

STITCH
Lobby Arrium (P) - 8:00 pm
Preludes - 10:15 pm

CHIP & DALE
Preludes - 9:45 pm

PETER PAN
Deck 4, Midship
5:45 pm & 7:15 pm

(P) - Portside, (S) - Starboard Side
Don't forget your Camera to capture those Magical Moments!
Check here each day for Character appearances.
For detailed Character appearance information
see the Character Information Board in the Lobby Arrium.
Meet-and-Greets will be advertised for the length of time the line will be open. To avoid disappointment, please meet at start time of appearances.

YOUTH ACTIVITIES THEMED EXPERIENCES

CLUBHOUSE SERIES
focuses on movement and includes large group games & movement-oriented activities to younger children.

STORYBOOK SERIES
will have a tactile focus allowing children to create and admire their work.

JUMP UP! SERIES
focuses on children's stage presence with lots of activities and enthusiasm.

CREATE & INVENT SERIES
are less active, but will challenge children with problem/solutions-based activities.

YOUTH ACTIVITIES OPEN HOUSE
Activities for families, adults and children of all ages to enjoy together.

SHIP DIRECTORY

YOUTH ACTIVITIES

DISNEY'S OCEANEER CLUB	9:00 AM - 12:00 AM
DISNEY'S OCEANEER LAB	9:00 AM - 12:00 AM
EDGE	10:00 AM - 1:00 AM
IT'S A SMALL WORLD NURSERY	8:30 AM - 11:00 AM
VIBE	10:30 AM - 2:00 AM

POOLS

*Children under 12 years of age must have adult supervision in all pools.

AQUADUNK	9:00 AM - 11:45 AM
	12:15 PM - 7:30 PM
	8:00 PM - 9:00 PM

AQUALAB	8:30 AM - 10:00 PM
GOOFLY'S POOL	9:00 AM - 6:00 PM
NEPHEWS' SLASH ZONE	8:30 AM - 6:00 PM
QUIET COVE POOL (18+)	8:00 AM - 10:00 PM
TWIST 'N' SPOUT	9:00 AM - 9:00 PM

Complimentary pool vests are available for children to use in the pools onboard.
They are located on the pool deck.

RECREATION

PORT ADVENTURES DESK	9:00 AM - 1:00 PM
SENSES FITNESS CENTER (18+)	6:30 AM - 10:00 PM
WIDE WORLD OF SPORTS DECK	24 HOURS

GENERAL INFORMATION

BUENA VISTA THEATRE	SHOWTIMES
DISNEY VACATION CLUB DESK	9:00 AM - 12:00 PM
ONBOARD SALES DESK	5:00 PM - 10:00 PM
	9:30 AM - 11:00 AM
	7:30 PM - 8:30 PM
	9:30 PM - 10:30 PM

FUNNEL VISION	SHOWTIMES
GUEST SERVICES	24 HOURS
HAIR BRAIDING	4:00 PM - 6:00 PM
	7:00 PM - 10:00 PM

MEDICAL HEALTH CENTER	9:30 AM - 11:00 AM
PORT & SHOPPING DESK	4:30 PM - 7:00 PM
PRELUDES	7:30 PM - 8:30 PM

QUARTER MASTERS (ARCADE)	24 HOURS
SENSES SPA AND SALON	8:00 AM - 10:00 PM
SHUTTERS PHOTO GALLERY	9:00 AM - 11:00 AM
	7:30 PM - 11:00 PM

WALT DISNEY THEATRE	SHOWTIMES
	8:00 AM - 10:30 AM
	8:30 PM - 11:00 PM

SHOPPING

MICKEY'S MAINSAIL	8:00 AM - 10:30 AM
	8:30 PM - 11:00 PM

QUACKS	8:30 PM - 11:00 PM
SEA TREASURES	9:00 PM - 10:30 PM
VISTA GALLERY	8:00 AM - 10:30 AM
WHITE CAPS	8:30 PM - 11:00 PM

Animators' Palette - Pacific Rim Cuisine
Caricava's - South American Cuisine
Lumiere's - French Cuisine

Animators' Palette - Pacific Rim Cuisine
Caricava's - South American Cuisine
Lumiere's - French Cuisine

Animators' Palette - Pacific Rim Cuisine
Caricava's - South American Cuisine
Lumiere's - French Cuisine

DINING & LOUNGES

BRUNCH

CABANAS	DECK 9, Aft	7:30 AM - 11:30 AM
DAISY'S DE LITES	DECK 9, Aft	7:00 AM - 9:00 AM
LUMIERE'S (A-LA CARTE)	DECK 3, Mid	8:30 AM - 11:30 AM

LUNCH

CABANAS	DECK 9, Aft	11:30 AM - 2:00 PM
DAISY'S DE LITES	DECK 9, Aft	11:00 AM - 6:00 PM
LUMIERE'S (A-LA CARTE)	DECK 3, Mid	8:30 AM - 11:30 AM
PETE'S BOILER BITES	DECK 9, Aft	11:00 AM - 6:00 PM
PINOCCHIO'S PIZZERIA	DECK 9, Mid	11:00 AM - 6:00 PM

DINNER

ANIMATOR'S PALATE	DECK 4, Aft	5:45 PM & 8:15 PM
CABANAS TABLE SERVICE	DECK 9, Aft	6:30 PM - 8:30 PM
CARIOCA'S	DECK 3, Aft	5:45 PM & 8:15 PM
LUMIERE'S (A-LA CARTE)	DECK 3, Mid	5:45 PM & 8:15 PM
PALO (FOR RESERVATIONS CALL 7-6849)	DECK 10, Aft	6:00 PM - 8:30 PM
PETE'S BOILER BITES	DECK 9, Aft	6:00 PM - 10:00 PM

LATE NIGHT SNACKS

O'GILLIS PUB	DECK 3, Fwd	10:45 PM - 11:45 PM
PINOCCHIO'S PIZZERIA	DECK 9, Mid	9:30 PM - 12:00 AM
PROMENADE LOUNGE	DECK 3, Aft	10:45 PM - 11:45 PM

ADDED FEATURES

EYE SCREAM	DECK 9, Aft	11:00 AM - 11:00 PM
BEVERAGE STATION	DECK 9, Aft	24 HOURS
ROOM SERVICE	DIAL 7-4330	24 HOURS

ENTERTAINMENT - LOUNGES - BARS

Adults must be 21 and older to consume alcoholic beverages.

AFTER HOURS	DECK 3, Fwd	(AFTER 9:00 PM, ADULTS ONLY)
COVE CAFE (18+)	DECK 9, Mid	6:30 AM - 12:00 AM
D LOUNGE	DECK 4, Mid	SHOWTIMES
FATHOMS (18+)	DECK 3, Fwd	7:00 PM - 2:00 AM
FROZONE TREATS	DECK 9, Aft	10:30 AM - 6:00 PM
INTERNET CAFE	DECK 3, Aft	24 HOURS
KEYS (18+)	DECK 3, Fwd	5:30 PM - 12:30 AM
O'GILLIS PUB (18+)	DECK 3, Fwd	4:30 PM - 12:30 AM
PRELUDES	DECK 4, Fwd	5:30 PM - 9:00 PM
PROMENADE LOUNGE	DECK 3, Aft	8:00 AM - 12:00 AM
PINOCCHIO'S PIZZERIA	DECK 9, Mid	9:30 AM - 12:00 AM
SIGNALS (18+)	DECK 9, Fwd	9:30 AM - 12:00 AM

Public Health Advisory: Consuming raw or undercooked meats, poultry, seafood, shellfish, or eggs may increase your risk for foodborne illness, especially if you have certain medical condition.

All Ashore: Approx. 12:30 pm
All Aboard: 7:30 pm

Ship's Agent in Key West

P.O. Box 285, Key West, FL 33041

Ms. Julie Kostelke

T: 605 294 3288; Mobile: 305 797 0853

IMPORTANT NUMBERS

Fire/Security: 7-3001

Medical EMERGENCY: 7-3000

Health Center: 7-1923