

# PERSONAL NAVIGATOR



THURSDAY, FEBRUARY 26, 2015

Sunrise: 6:42 am Sunset: 6:15 pm  
Evening Attire: Cruise Casual

Today: Partly Cloudy High: 76°F/24°C  
Tomorrow: Overcast High: 64°F/18°C

DAY AT SEA

## Disney's Believe

Genie from Aladdin and many of Disney's most beloved magic makers take a father on a magical journey to show him that anything is possible if you just believe.

WALT DISNEY THEATRE  
DECK 3 & 4, FORWARD

6:15 pm & 8:30 pm

As a courtesy to all Guests, we kindly advise that the saving of seats is **not** permitted in the Walt Disney Theatre.



Assistance available at the entrance to the Walt Disney Theatre 30 minutes prior to show time.



## Disney Dream Fun Facts

**Tonnage:** 129,690

**Height:** 66.13 m (217 feet)

**Length:** 339.8 m (1114.7 feet)

### Important Dates

**Name Announcement:** March 2009

**Steel Cutting:** March 2009

**Keel Laying:** August 2009

**Delivery:** December 2010

### Did you know?

The Sorcerer Mickey Mouse on the Disney Dream's stern is about 14 feet long. Constructed of stainless steel and fiberglass, it weighs approximately 2,500 pounds.

SEA YA'  
REAL SOON!

Mickey and Minnie along with the rest of the Walt Disney Characters invite you to join them in the ship's atrium for Sea Ya Real Soon. You won't want to miss this very special farewell presentation.

Lobby Atrium,  
Deck 3, Midship,  
10:15 pm

## Don't Miss:

### Art of The Theme Show Tour (18+)

*Meridian, Deck 12, Aft - 9:00 am*

Join us on a guided ship tour and discover the key ingredients that make the Disney Dream cruise ship one-of-a-kind.

### Jack-Jack's Incredible Diaper Dash

*Lobby Atrium, Deck 3, Midship - 11:30 am*

Calling all baby cruisers! It's time to take to the mat to see who's the fastest crawler of the seven seas! Register your baby 15 minutes prior to the big race.

### Captain's Signing

*White Caps, Deck 3, Forward - 12:15 pm*

Meet the Master of the Disney Dream and have your cruise memories signed.

### 80's Music Challenge (18+)

*Evolution, Deck 4, Aft - 10:45 pm*

"Moon Walk" back to the 80's as we put your musical knowledge of the decade to the test.

### Debark Talk Broadcast

Important information regarding disembarkation procedures for your journey home will be covered in this debarkation briefing. The broadcast will be shown continuously on channel 5 of your stateroom television for your convenience. Please place your luggage outside your stateroom between 8:30 - 10:30 pm.

Thank you in advance for completing your comment card.



### Visit The Onboard Sales Desk Early Today

Please visit the Onboard Sales Desk, Deck 4, Midship, as early as possible today. The last day of the cruise tends to get busy in the evening, and we want to be sure you have the opportunity to save 10% on your next cruise, receive up to a \$200 onboard credit, and pay a reduced deposit!

## DINNER MENU

Animator's Palate: Pacific Rim Cuisine  
Enchanted Garden: Continental Market  
Royal Palace: French Dinner

## DRINK OF THE DAY

High Tide (Alcoholic)  
Princess Delight (Non Alcoholic)

### IMPORTANT NUMBERS

Fire/Security: 7-3001  
Medical Emergency: 7-3000  
Health Center: 7-1923



# ADULT ACTIVITY HIGHLIGHTS



## SENSES SPA FITNESS CLASSES & SEMINARS

*Wake Up & Stretch Class* - Senses Fitness Center - 7:00 am  
*Fab Abs* - Senses Fitness Center - 7:30 am  
*Yoga* - Senses Fitness Center - 8:00 am  
*Group Cycling* - Senses Fitness Center - 9:00 am  
*Introduction to Acupuncture* - Senses Fitness Center - 9:30 am  
*Acupuncture Seminar: Arthritis and Back Pain Solutions* - Senses Fitness Center - 10:00 am  
*Body Sculpt Boot Camp (Nom. Fee)* - Senses Fitness Center - 10:00 am  
*Detox for Health & Weight Loss* - Senses Fitness Center - 11:00 am  
*Good Feet: Relieving Back Pain* - Senses Fitness Center - 1:00 pm  
*How to Increase Your Metabolism* - Senses Fitness Center - 2:00 pm

## TASTING CLASSES

*Chocolate & Liquor Tasting* (21+) - Pink - 12:15 pm  
*Martini Tasting* (21+) - Meridian - 2:00 pm & 4:00 pm  
*Stem to Stern Wine Tasting* (21+) - Pink - 2:00 pm  
 Please make reservations for tastings at Guest Services for a nominal fee.  
 Tasting Seminars are only for Guests 21 and older.

CLUB  
18\*21

### CLUB 18\*21 - LUNCH

*Royal Palace, Deck 3, Midship - 12:30 pm*  
 Get to know your fellow 18\*21 Guests over a spot of lunch.

### CLUB 18\*21 - JENGA CHALLENGE

*687 Pub, Deck 4, Aft - 4:30 pm*  
 Have some fun with this classic game.

### CLUB 18\*21 - FAREWELL

*Evolution, Deck 4, Aft - 10:15 pm*  
 Join your Cruise Staff and your new friends in this last gathering for some fun.

## 90'S MUSIC TRIVIA

*687 Pub, Deck 4, Aft - 2:15 pm*  
 "If you Wannabe" the winner, then join us as we test your 90's music knowledge.



## ANYONE CAN COOK - LOBSTER RAVIOLI

*D Lounge, Deck 4, Midship - 3:00 pm*  
 From our galley to yours. Join our chefs as they show you how to prepare delicious dishes.  
 Today's Menu - Lobster Ravioli



# FUN FOR ALL AGES HIGHLIGHTS

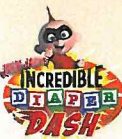


## runDisney HELP CENTER

*Deck 5, Midship - 10:00 am - 12:00 pm*

## \$10,000 MEGA JACKPOT BINGO

*Bingo Pre-Sales start at 10:15 am*  
*D Lounge, Deck 4, Midship - 10:45 am*  
 It's Big, it's Massive, it's Supersized! It's \$10,000 MEGA Jackpot Bingo! Take home \$10,000 if you can cover your card in 46 numbers or less. If not, we carry on to play for the biggest cash prize of the session, plus today's Disney Vacation Club sponsored raffle includes a \$100 Onboard Credit and prize-packs. Pre-Sales start 30 minutes prior to game.



## JACK-JACK'S INCREDIBLE DIAPER DASH

*Lobby Atrium, Deck 3, Midship - 11:30 am*  
 Calling all baby cruisers! It's time to take to the mat to see who's the fastest crawler of the seven seas! Register your baby 15 minutes prior to the big race.

## DISNEY VACATION CLUB GROUP PREVIEW

*Evolution, Deck 4, Aft - 11:45 am*  
 Want to learn more about taking magical vacations year after year? Please see a Disney Vacation Club representative on Deck 4, Midship, or call 7-2805 from your stateroom phone for more information about our interactive group presentation.



## DISNEY ANIMATION: CREATING A CHARACTER

*D Lounge, Deck 4, Midship - 1:00 pm*  
 Go behind the scenes at Walt Disney Animation Studios as Walt Disney himself talks about his most famous characters, then learn the basic techniques of drawing Mickey and Donald in this fun and interesting enrichment program.



## MICKEY 200

*Evolution, Deck 4, Aft - 1:15 pm*  
 Don't eat your vegetables... race them in this wild and wacky charge to the finish line. May the best veggie win! (Limited Availability)



## TOWEL FOLDING

*D Lounge, Deck 4, Midship - 2:00 pm*  
 Learn to create those amazing towel creatures you've seen in your stateroom all cruise long.

## DISNEY CHANNEL ON DECK

*Deck Stage, Deck 11, Midship - 3:30 pm*  
 Don't change that channel! It's time for a Disney Channel afternoon poolside! Your Cruise Staff will host an exciting day of games and contests in between your favorite Disney Channel shows! So sit back, relax, and enjoy the sun!



## FINAL JACKPOT BINGO

*Bingo Pre-Sales start at 3:45 pm*  
*D Lounge, Deck 4, Midship - 4:15 pm*  
 The snowball jackpot MUST BE WON at this final session! Beat the line and get your cards early. Who will be the lucky winner? It could be you! Pre-Sales start 30 minutes prior to game.



## OFFICER PIN TRADING

*Preludes, Deck 3, Forward - 7:15 pm*  
 Come trade pins with the Officers of the Disney Dream.

## TODDLER TIME

*D Lounge, Deck 4, Midship - 5:30 pm*  
 Join us for some fun activities that your toddler is sure to enjoy.



## FAMILY FUSION

*D Lounge, Deck 4, Midship - 9:45 pm*  
 Bring the entire family and test your Disney knowledge in the high-tech interactive game show, Family Fusion.



# YOUTH ACTIVITIES HIGHLIGHTS

## Dine & Play

A convenience for families dining at 8:15 pm, our Youth Activities counselors will be available at 9:15 pm at the entrance of Royal Palace, Enchanted Garden and Animator's Palate dining rooms to bring registered children to join the fun in the Youth Activities areas.



**Deck 5 Midship (7-5864) 9:00 am - 12:00 am**

## OPEN HOUSE

8:00 am - 9:00 am

Your chance to see our toddler space, it's a small world nursery.



**Deck 5, Midship (7-1440) 10:30 am - 11:30 pm**  
(3 - 12 years old)

## TOY STORY BOOT CAMP

11:00 am

Join Corporal Green in our own version of boot camp as we learn how to have fun - The Toy Story way!

## MICKEY'S PUZZLE PLAYTIME

1:00 pm

Come and play with Mickey & friends as they share their favorite games, puzzles and dances!



**Deck 5, Midship (7-1445) 9:00 am - 12:00 am**  
(3 - 12 years old)

## SPORTS DECK FUN

10:00 am

Take over the Sports Deck with some fun and friendly competition.

## STITCH'S FINAL FAREWELL

9:45 pm

We'll get a very special guest as we celebrate the grand finale to this cruise!



**Deck 13, Midship (7-9743) 10:00 am - 12:00 am**  
(11 - 14 years old)

## SUPER SLOPPY SCIENCE

11:30 am

Join Professor Make-O-Mess in some of the most extreme experiments you will ever see in the world of Super Sloppy Science!

## ICE CREAM SOCIAL

12:30 pm

I scream, you scream, we all scream for ice cream! Make your own frosty treat with your Counselors.

**Entrance on Deck 4, Forward (7-9417)**  
(14 - 17 years old)

11:00 am - 1:00 am

## ZOMBIFIED

12:15 pm

A big movie producer is looking for zombies to help him film the finale to his latest masterpiece, Zombified.

## ZOMBIFIED PREMIERE

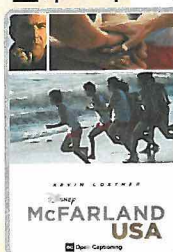
10:30 pm

It's premiere night for the latest zombie movie starring YOU!

# BUENA VISTA THEATRE

Deck 4 & 5, Midship  
Today's Movies

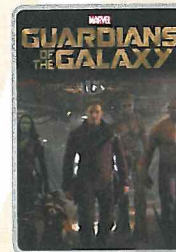
Open Captioning



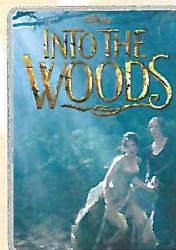
10:45 am  
Duration:  
2 hrs 9 mins  
Rating: PG



1:15 pm  
Duration:  
1 hr 39 mins  
Rating: PG



3:15 pm  
Duration:  
2 hrs 2 mins  
Rating: PG-13



5:30 pm & 8:15 pm  
Duration:  
2 hrs 4 mins  
Rating: PG



11:30 pm  
Duration:  
2 hrs 9 mins  
Rating: PG

## Disney Cruise Line ANYONE CAN COOK (Culinary Series)

### FAMILY CULINARY SERIES

From our galley to yours.  
Join our chefs as they  
show you how to prepare  
delicious dishes.

Today's Menu  
Apple Strudel

**D Lounge,  
Deck 4, Midship,  
12:00 pm**

### FAMILY VARIETY ACT

**Repeat Show:**  
Featuring the  
Comedy & Ventriloquism  
of Taylor Mason,  
as he entertains the  
entire family in this  
fun-filled show.

**Evolution,  
Deck 4, Aft,  
10:15 pm**

## YOUTH ACTIVITIES OPEN HOUSE

Open House is an opportunity for all to come and participate in a variety of exciting activities and free time in it's a small world nursery, the Oceaneer Club, Oceaneer Lab, Edge and Vibe throughout the cruise. During these times secured programming will still be offered in the other venues for those looking to check their children into care.

it's a small world nursery: 8:00 am - 9:00 am

Disney's Oceaneer Club: 9:00 am - 10:30 am & 11:30 pm - 12:00 am

Disney's Oceaneer Lab: 4:00 pm - 5:30 pm

Edge: 9:00 am - 10:00 am & 5:30 pm - 7:00 pm

Vibe: 10:00 am - 11:00 am & 7:30 pm - 8:45 pm



# MORE TO ENJOY WHILE ONBOARD

## BOOK ONBOARD AND SAVE!

Explore all the itineraries Disney Cruise Line offers - from the Caribbean and Bahamas to Alaska or Europe. Save when you book your next family adventure onboard! Visit the Onboard Sales Desk for more information.

## DISNEY VACATION CLUB® GROUP PREVIEW

Want to learn more about taking magical vacations year after year? Please see a Disney Vacation Club representative on Deck 4, Midship, or call 7-2805 from your stateroom phone for more information about our interactive group presentation.

## STAY CONNECTED WITH CELLULAR SERVICE

Cell phone and wireless PDA service is available in Guest staterooms through most plans. Pricing varies depending upon your wireless provider and usually includes International roaming rates.

## EXPRESS WALK-OFF

This option allows you to take your luggage off the ship at your leisure once the ship has been cleared by the local authorities. You won't need to wait for your luggage to enter the terminal and there is no need to claim it inside the terminal building. Please note that no assistance with luggage is provided for this option.

## MIDSHIP DETECTIVE AGENCY

Use your detective know-how and our special detective "badge" to search the ship and catch your criminal! Deck 5, Midship Kiosks.

## Connect@Sea

We are now offering a NEW and improved Internet service to stay connected on your cruise like no other in the industry! Internet packages range from \$0.25 per MB - \$89.00 (1000 MB package). For more information contact your Connect@Sea Expert or Guest Services onboard.

## FREE ON DEMAND TV

Watch Disney movies, Hollywood features, and even captioned content, plus much more "On Demand" for FREE in the comfort of your stateroom! Bookmark your movie and come back to watch it later. Press MENU on your stateroom television remote control and follow the prompts.



## SALON TASTER SPECIAL

Choose from scalp massage, European facial, hand treatment, sunglow make-over, hair treatment, eye-collagen treatment, foot and ankle massage and neck and shoulder massage.

Three for \$99, five for \$119, and eight for \$139.

*Senses Spa & Salon, Deck 11, Forward, Ext. 7-1465*



## HEARTS ON FIRE

THE WORLD'S MOST PERFECTLY CUT DIAMOND®

Designed, cut, and polished by master craftsmen using the world's most advanced technology, discover the elegant diamond-adorned jewelry pieces created by Hearts on Fire.

**WHITE CAPS  
DECK 3, FORWARD**



## PROFESSIONAL PORTRAITS TONIGHT!

Night Ship - Six Guest Maximum

5:15 pm - 6:30 pm

7:15 pm - 8:30 pm

Grand Staircase - Groups Accommodated

5:15 pm - 6:30 pm

7:15 pm - 8:30 pm

Visit Shutters for everything you need to capture your cruise photo memories. Now is the time to save on cameras and accessories with the best deals of the year! Extra special savings and gifts available with purchase, all at tax and duty free prices.

## SHOPPING

### STYLISH DISNEY CRUISE LINE APPAREL

Head to Sea Treasures where you'll find the new "Ahoey Minnie" collection. Inspired by Minnie's classic style, the items in this collection features trendy nautical-themed designs created especially for Disney Cruise Line. Tie your outfit together with apparel and accessories from the nautical rope-inspired Disney Cruise Line collection "Mickey Knots," also available in Sea Treasures. Deck 3, Forward.

### BEAUTIFUL JEWELRY DESIGNS BY HEARTS ON FIRE

Swing by White Caps, Deck 3 Forward, for your final opportunity on this sailing to discover the beautiful hand-cut diamonds that adorn the elegant jewelry pieces designed by Hearts on Fire. Expertly selected among less than a tenth of one percent of the world's diamonds, it is easy to see why a diamond by Hearts on Fire is regarded as "The World's Most Perfectly Cut Diamond." White Caps, Deck 3 Forward.

### THE DISNEY PARKS COLLECTION BY PANDORA JEWELRY

The Disney Parks Collection by PANDORA Jewelry features hand-finished .925 sterling silver and 14K gold charms inspired by some of Disney's most beloved characters. Visit White Caps on Deck 3, Forward, where you'll find a specially designed sterling silver charm featuring a Disney Cruise Line ship.

### OFFICER PIN TRADING

Check out the Disney Cruise Line pins when you visit Mickey's Mainsail. Later, join the Officers of the Disney Dream Cruise Ship for pin trading fun at 7:15 pm in Preludes. Deck 3, Forward.

### COLLECT YOUR DISNEY CRUISE MEMORIES IN A DISNEY CRUISE LINE PHOTO ALBUM

Store the many happy memories you've photographed while on your Disney cruise inside a 2015 Disney Cruise Line photo album and scrapbook, available in Mickey's Mainsail, Deck 3, Forward. Mickey's Mainsail is also where you'll find additional commemorative 2015 Disney Cruise Line souvenirs.

### CAPTAIN'S SIGNING

Don't miss your chance to meet the Master of the Disney Dream! Stop by White Caps today at 12:15 p.m. where you can have your cruise mementos signed by Captain Henry. Deck 3, Forward.

### GREAT REASON TO SHOP ONBOARD!

Stop by the onboard merchandise shops, Deck 3, Forward, and receive a Disney Cruise Line® Fleece Throw for \$24.95 with any merchandise purchase of \$40.00 or more. While supplies last. Offer not valid on previous purchases. Offer subject to change without notice.

## IMPORTANT INFORMATION

### Security Notice

All Guests (including children) who wish to disembark the ship are required to present their Key to the World card at the gangway. A photo ID is also required for those Guests who are 18 years of age or older. Guests under the age of 18 are required to have a parent, guardian or other responsible adult sign an authorization form at the Guest Service Desk if they wish to go ashore unaccompanied or with any adult from another stateroom.

### Inclement Weather

For the safety of all Guests, outdoor events may be changed due to unforeseen weather conditions.

### Cold and Flu Reminder

Please wash hands frequently and thoroughly, particularly before meals. Contact the Health Center by dialing 7-1923, should anyone in your party become ill.

### Corridor Quiet Hours

As a courtesy to all our Guests, please recognize quiet hallway hours from 10:00 pm - 8:00 am.

### Sunscreen/Insect Repellent Advisory

Use sunscreen first and protect against mosquito bites and related illnesses by applying insect repellent on top of sunscreen when going ashore. Insect repellent is available for purchase in White Caps.

### Environmental Message

With Disney's commitment to the environment, please refrain from throwing anything over the ship's side. Thank you!

### No Reserved Seats Policy

As a courtesy to all our Guests, we kindly advise that the saving of seats is not permitted in the Walt Disney Theatre, and the saving of the sun loungers is not permitted on Deck 11, 12 and 13. Items left unattended will be returned to lost and found at Guest Services, Deck 3, Midship.

### Smoking

For the comfort of our guests the following areas are designated as Smoking areas:

•Deck 13, Forward, port side, by "Currents"

•Deck 12, Aft, port side outdoor area that is accessible through the Meridian Lounge

•Deck 4, Aft, port side from 6:00 pm to 6:00 am only (all of Deck 4 is no smoking from 6:00 am to 6:00 pm).

-Smoking is prohibited inside all Guest staterooms and on stateroom verandahs. Guests found smoking in their staterooms or on their verandahs will be charged a \$250 stateroom recovery fee. Electronic cigarettes may only be used in designated smoking areas.

### Walt Disney Theatre

Theatrical performances may use artificial fog, strobe lights, pyrotechnics and other special effects. For the safety of our performers and the comfort of those around you, the use of any photography, video recording devices or any electronic equipment is prohibited.

### Verandah Safety

Please do not leave any combustible materials on your balcony when not present in your stateroom for safety reasons.



↓ Symbol for activities that will be repeated during the cruise

— FOLD —

Fold along the dashed lines and take me with you  
so you don't miss any of the fun!

FOLD —

 CLUBHOUSE SERIES  
  DIAM UPS SERIES  
  IN THE SPOTLIGHT SERIES  
  SOLO IT'S SERIES  
  CREATE & INVENT SERIES  
  OPEN HOUSE  
  STORYBOOK SERIES  
 



THURSDAY, FEBRUARY 26, 2015 - DAY AT SEA

# BUENA VISTA THEATRE

Deck 4 & 5, Midship

Open Captioning



|   |  |   |  |   |
|---|--|---|--|---|
| 10:45 am<br>Duration:<br>2 hrs 9 mins<br>Rating: PG | 1:15 pm<br>Duration:<br>1 hr 39 mins<br>Rating: PG | 3:15 pm<br>Duration:<br>2 hrs 2 mins<br>Rating: PG-13 | 5:30 pm & 8:15 pm<br>Duration:<br>2 hrs 4 mins<br>Rating: PG | 11:30 pm<br>Duration:<br>2 hrs 9 mins<br>Rating: PG |
|---|--|---|--|---|

## Character Appearances

**PRINCESS MINNIE**  
Deck 4, Balcony - 9:15 am

**CHARACTER DANCE PARTY**  
Lobby Atrium - 12:15 pm

**SNOW WHITE**  
Deck 4, Balcony - 2:45 pm

**GOOFY & DONALD**  
Preludes - 3:00 pm

**DAISY DUCK**  
Preludes - 5:00 pm

**MICKEY MOUSE**  
Deck 4, Balcony  
5:00 pm & 7:15 pm

**PLUTO**  
Lobby Atrium (V) - 5:15 pm

**DONALD DUCK**  
Preludes - 5:30 pm

**GOOFY**  
Lobby Atrium (V) - 5:45 pm

**MINNIE MOUSE**  
Lobby Atrium (V) - 7:15 pm

**SEA YA REAL SOON**  
Lobby Atrium - 10:15 pm



(H) Hallway - (S) Starboard Side - (P) Port Side - (V) Vestibule  
For details of daily Disney character appearances, refer to the character line on your Navigator Grid, or the digital character board in the Lobby Atrium.

## YOUTH ACTIVITIES THEMED EXPERIENCES

**CLUBHOUSE SERIES**  
focuses on movement and features content which appeals to younger children.

**STORYBOOK SERIES**  
is designed with a strong connection to the Disney classic stories.

**JUMP UP! SERIES**  
includes large group games & movement-oriented activities.

**CREATE & INVENT SERIES**  
will have a tactile focus allowing children to create and admire their work.

**IN THE SPOTLIGHT SERIES**  
focuses on children's stage presence with lots of activities and enthusiasm.

**TALENT SHOW SERIES**  
are less active, but will challenge children with problem/solutions-based activities.

**OPEN HOUSE**

activities for families, adults and children of all ages to enjoy together.

## SHIP DIRECTORY

### YOUTH ACTIVITIES

|                            |              |                     |
|----------------------------|--------------|---------------------|
| DISNEY'S OCEANEER CLUB     | DECK 5, MID  | 10:30 AM - 11:30 PM |
| DISNEY'S OCEANEER LAB      | DECK 5, MID  | 9:00 AM - 12:00 AM  |
| EDGE                       | DECK 13, MID | 10:00 AM - 12:00 AM |
| VIBE                       | DECK 4, FWD  | 11:00 AM - 1:00 AM  |
| IT'S A SMALL WORLD NURSERY | DECK 5, MID  | 9:00 AM - 12:00 AM  |

### POOLS & MORE

\* Children under 12 must have adult supervision in pool areas.

|                       |              |                    |
|-----------------------|--------------|--------------------|
| AQUADUCK              | DECK 12, AFT | 9:00 AM - 11:00 PM |
| DONALD'S POOL         | DECK 11, MID | 9:00 AM - 6:00 PM  |
|                       |              | 8:00 PM - 10:00 PM |
| MICKEY'S POOL         | DECK 11, MID | 8:30 AM - 10:30 PM |
| MICKEY'S SLIDE        | DECK 11, MID | 9:00 AM - 6:00 PM  |
| NEMO'S REEF           | DECK 11, MID | 9:00 AM - 6:00 PM  |
| QUIET COVE POOL (18+) | DECK 11, FWD | 8:00 AM - 10:00 PM |

Complimentary pool vests are available for children to use in the pools onboard.  
Located on the pool deck.

### RECREATION

|                             |              |                     |
|-----------------------------|--------------|---------------------|
| GOLF/SPORTS SIMULATORS      | DECK 13, AFT | 9:00 AM - 6:00 PM   |
| GOOFY GOLF                  | DECK 13, AFT | 8:00 AM - 10:00 PM  |
| GOOFY'S SPORTS DECK         | DECK 13, AFT | 12:00 AM - 10:00 AM |
|                             |              | 1:00 PM - 6:00 PM   |
| MIDSHIP DETECTIVE AGENCY    | DECK 5, MID  | 8:00 AM - 11:00 PM  |
| PORT ADVENTURES DESK        | DECK 5, MID  |                     |
| SENSES FITNESS CENTER (18+) | DECK 11, FWD | 6:00 AM - 10:00 PM  |

### GENERAL INFORMATION

|                        |                 |                     |
|------------------------|-----------------|---------------------|
| ARR-CADE               | DECK 11, AFT    | 24 HOURS            |
| BUENA VISTA THEATRE    | DECK 4 & 5, MID | SHOWTIMES           |
| DISNEY VACATION CLUB   | DECK 4, MID     | 9:00 AM - 11:00 AM  |
|                        |                 | 1:30 PM - 10:00 PM  |
| GUEST SERVICES         | DECK 3, MID     | 24 HOURS            |
| HAIRBRAIDING           | DECK 11, MID    | 8:00 AM - 9:30 PM   |
| MEDICAL HEALTH CENTER  | DECK 1, FWD     | 9:30 AM - 11:00 AM  |
|                        |                 | 4:30 PM - 7:00 PM   |
| ONBOARD SALES DESK     | DECK 4, MID     | 9:30 AM - 12:00 PM  |
|                        |                 | 3:00 PM - 6:00 PM   |
|                        |                 | 7:30 PM - 10:30 PM  |
| PORT & SHOPPING DESK   | DECK 4, MID     |                     |
| PRELUDES               | DECK 3, FWD     | 5:45 PM - 6:30 PM   |
|                        |                 | 8:00 PM - 8:45 PM   |
| runDisney HELP CENTER  | DECK 5, MID     | 10:00 AM - 12:00 PM |
| SENSES SPA AND SALON   | DECK 11, FWD    | 8:00 AM - 10:00 PM  |
| SHUTTERS PHOTO GALLERY | DECK 4, MID     | 10:00 AM - 11:30 PM |
| WALT DISNEY THEATRE    | DECK 3 & 4, FWD | SHOWTIMES           |

### SHOPPING

|                    |              |                     |
|--------------------|--------------|---------------------|
| MICKEY'S MAINSAIL  | DECK 3, FWD  | 9:30 AM - 11:00 PM  |
| SEA TREASURES      | DECK 3, FWD  | 9:30 AM - 11:00 PM  |
| QUACKS             | DECK 11, MID |                     |
| VISTA GALLERY      | DECK 4, MID  | 10:00 AM - 11:00 PM |
| WHITE CAPS         | DECK 3, FWD  | 9:30 AM - 11:00 PM  |
| WHOZITS & WHATZITS | DECK 11, MID | 10:00 AM - 4:00 PM  |
|                    |              | 7:00 PM - 10:00 PM  |

## IMPORTANT NUMBERS

Fire/Security: 7-3001  
Medical Emergency: 7-3000  
Health Center: 7-1923

DINNER MENU

Animator's Palate: Pacific Rim Cuisine  
Enchanted Garden: Continental Market Cuisine  
Royal Palace: French Dinner  
Dining Times: 5:45 pm & 8:15 pm

DRINK OF THE DAY

High Tide (Alcoholic)  
Princess Delight (Non Alcoholic)

WEATHER FORECAST

Today: Partly Cloudy  
High: 76°F/24°C  
Tomorrow: Overcast  
High: 64°F/18°C

Evening Attire: Cruise Casual

## DINING & LOUNGES

### BREAKFAST

|                     |              |                    |
|---------------------|--------------|--------------------|
| CABANAS CONTINENTAL | DECK 11, AFT | 7:00 AM - 7:30 AM  |
| CABANAS             | DECK 11, AFT | 7:30 AM - 10:45 AM |
| ENCHANTED GARDEN    | DECK 2, MID  | 9:00 AM - 12:00 PM |
| ROYAL PALACE        | DECK 3, MID  | 8:00 AM - 9:30 AM  |

### LUNCH

|                      |              |                    |
|----------------------|--------------|--------------------|
| CABANAS              | DECK 11, AFT | 11:45 AM - 2:15 PM |
| FILLMORE'S FAVORITES | DECK 11, MID | 10:30 AM - 6:00 PM |
| LUIGI'S PIZZA        | DECK 11, MID | 10:30 AM - 6:00 PM |
| ROYAL PALACE         | DECK 3, MID  | 12:00 PM - 1:30 PM |
| TOW MATER'S GRILL    | DECK 11, MID | 10:30 AM - 6:00 PM |

### DINNER

|   |              |                    |
|---|--------------|--------------------|
| ANIMATOR'S PALATE                                 | DECK 3, AFT  | 5:45 PM & 8:15 PM  |
| ENCHANTED GARDEN                                  | DECK 2, MID  | 5:45 PM & 8:15 PM  |
| PALO (18+) (RESERVATIONS REQ. & NOL. FEE APPLIES) | DECK 12, AFT | 6:00 PM - 9:00 PM  |
| REMY (18+) (RESERVATIONS REQ. & NOL. FEE APPLIES) | DECK 12, AFT | 6:00 PM - 8:30 PM  |
| ROYAL PALACE                                      | DECK 3, MID  | 5:45 PM & 8:15 PM  |
| TOW MATER'S GRILL                                 | DECK 11, MID | 6:00 PM - 11:00 PM |

### LATE NIGHT SNACKS

|               |              |                    |
|---------------|--------------|--------------------|
| LUIGI'S PIZZA | DECK 11, MID | 9:30 PM - 12:00 AM |
|---------------|--------------|--------------------|

### ADDED FEATURES

|                  |              |                     |
|------------------|--------------|---------------------|
| BEVERAGE STATION | DECK 11, MID | 24 HOURS            |
| EYE SCREAM       | DECK 11, MID | 11:00 AM - 12:00 AM |
| ROOM SERVICE     | DIAL 0       | CLOSES AT 1:30 AM   |

### ENTERTAINMENT - LOUNGES - BARS

Adults must be 21 and older to consume alcoholic beverages.

|                                     |              |                     |
|-------------------------------------|--------------|---------------------|
| 687 PUB (18+ AFTER 9:00 PM)         | DECK 4, AFT  | 12:00 PM - 12:00 AM |
| BON VOYAGE                          | DECK 3, MID  | 9:00 AM - 11:00 PM  |
| COVE BAR (18+)                      | DECK 11, FWD | 10:00 AM - 10:30 PM |
| COVE CAFE (18+)                     | DECK 11, FWD | 7:00 AM - 12:00 AM  |
| CURRENTS (18+)                      | DECK 13, FWD | 10:00 AM - 11:00 PM |
| D LOUNGE                            | DECK 4, MID  | SHOWTIMES           |
| DISTRICT LOUNGE (18+ AFTER 9:00 PM) | DECK 4, AFT  | 12:00 PM - 12:00 AM |
| EVOLUTION (18+)                     | DECK 4, AFT  | 9:30 PM - 2:00 AM   |
| FROZONE TREATS                      | DECK 11, MID | 10:00 AM - 10:00 PM |
| MERIDIAN (18+)                      | DECK 12, AFT | 10:00 AM - 12:00 AM |
| OUTLOOK (18+)                       | DECK 14, MID |                     |
| PINK (18+)                          | DECK 4, AFT  | 5:00 PM - 12:00 AM  |
| SKYLINE (18+)                       | DECK 4, AFT  | 5:00 PM - 12:00 AM  |
| VISTA CAFE                          | DECK 4, MID  | 7:00 AM - 11:00 PM  |
| WAVES                               | DECK 12, AFT | 10:00 AM - 6:00 PM  |

Public Health Advisory: Consuming raw or under-cooked meats, poultry, seafood, shellfish, or eggs may increase your risk for food borne illness, especially if you have certain medical condition.



## CHARACTER DANCE PARTY

Put your dancing shoes on and join some of your favorite Disney Friends in the Lobby Atrium, Deck 3, Midship for fun and dancing.  
12:15 pm