

# PERSONAL NAVIGATOR

SUNDAY, JANUARY 25, 2015

Sunrise: 7:02 am Sunset: 6:14 pm  
Evening Attire: Cruise Casual  
All Ashore: Approx: 7:30 am  
Last Tender: 3:30 pm

Today: Partly Cloudy High: 74°F/23°C  
Tomorrow: Partly Sunny High: 70°F/21°C

GRAND CAYMAN

## Disney • PIXAR TOY STORY THE MUSICAL

WALT DISNEY THEATRE

Deck 4, Forward  
6:15 pm & 8:30 pm

As a courtesy to all Guests, we kindly advise that the saving of seats is **not** permitted in the Walt Disney Theatre.



Assistance available at the entrance to the Walt Disney Theatre 30 minutes prior to show time.

## Grand Cayman Port Information

The Cayman Islands were first sighted by European explorers in 1503, in a wayward voyage headed by Christopher Columbus. Though the two smaller islands were discovered on this fateful trip, the largest of them, Grand Cayman, would escape attention by sailors until 1655, when the area was claimed by the British.

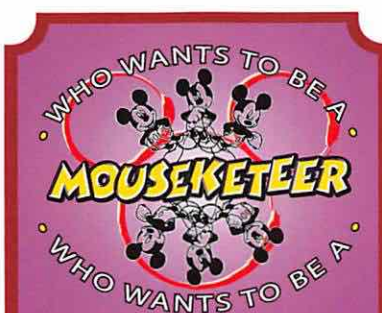
For centuries from the time of their discovery, the Cayman Islands would provide a place for ships to come ashore and rest on their journeys into the Caribbean. Crewmen on these ships would routinely replenish themselves on the meat provided by the native population of turtles. By the 19th century, Grand Cayman was overtaken by pirates.

It would take political upheaval and the establishment of a local government under British rule to transform the island into what it is today.

Discover a place that—once a welcome refuge for buccaneers—is today a treasured tourist hotspot. From sparkling surf to the bounty of local shops, whatever your pleasure, you'll find it here.

### AT ANCHOR: Please refer to your tendering letter.

The Ship will anchor outside of the port and guests will use tender boats to proceed ashore and to return. This is a continuous service and guests with special needs/disabilities who wish to go ashore should check with Guest Services for accessibility of the tendering service and the port facilities.



### FAMILY GAME SHOW

Your chance to get into the world famous hot seat and win an exclusive prize in our version of the well known television game show.

Studio Sea,  
Deck 4, Midship,  
7:30 pm & 9:45 pm

## Don't Miss:

### Disney Junior Pirate & Princess Dance Party

Studio Sea, Deck 4, Midship - 4:30 pm

Calling all Pirates and Princesses! Come join us for a family dance party featuring music and fun activities from Jake & the Neverland Pirates and Sofia the First. Whether you favor tiaras or treasure chests, there's something for you at our Disney Junior Pirate & Princess Dance Party. Sofia and Jake will be there - come join them for the fun!

### Saludos Amigos Fiesta

WaveBands, Deck 3, Forward - 7:30 pm

Come see what Donald and his friends are up to this time. Bring the family out to this interactive dance party featuring fun Latin music! Your family will learn to salsa, merengue and just have a Latin good time!

### Adult Variety: Matt Baker (18+)

WaveBands, Deck 3, Forward - 10:15 pm

Featuring the Physical Comedy of Matt Baker, in this Adult exclusive cabaret style show.

### Match Your Mate (18+)

WaveBands, Deck 3, Forward - 10:45 pm

It's time to play everyone's favorite couples game show - Match Your Mate!



Please check your tour tickets for meeting times and locations.  
Visit the Port Adventures Desk, Deck 3, Midship for any questions.

## DINNER MENU

Animator's Palate : Pacific Rim Cuisine  
Parrot Cay : Caribbean Island Cuisine  
Triton's : French Cuisine

## DRINK OF THE DAY

Yellow Bird (Alcoholic)  
Passion Cream Freeze (Non-Alcoholic)

## IMPORTANT NUMBERS

Fire/Security: 7-3001  
Medical Emergency: 7-3000  
Health Center: 7-1923



# ADULT ACTIVITY HIGHLIGHTS



## VISTA SPA FITNESS CLASSES & SEMINARS

*Sunrise Stretch* - Vista Spa Fitness Center - 7:00 am  
*Group Cycling* - Vista Spa Fitness Center - 8:00 am  
*Back Pain Solutions* - Cadillac Lounge - 4:15 pm  
*Pilates* - Vista Spa Fitness Center - 4:30 pm  
*Complimentary Footprint Analysis* - Vista Spa - 5:00 pm  
*Tongue & Pulse Analysis* - Vista Spa Fitness Center - 5:30 pm

## CLUB 18\*21 - JENGA CHALLENGE

*Diversions, Deck 3, Forward - 5:00 pm*  
 Have some fun with this classic game.

## CLUB 18\*21 - SOCIAL

*Diversions, Deck 3, Forward - 10:00 pm*  
 Come and socialize with your fellow cruisers

## ART OF THE THEME SHOW TOUR

*Palo, Deck 10, Aft - 4:00 pm*

Join us on a guided ship tour and discover the key ingredients that make the Disney Wonder.

## 70'S MUSIC TRIVIA

*Diversions, Deck 3, Forward - 7:30 pm*

Let's step back in time and visit Studio 54 as we test your 70's music knowledge.

## LIVE PIANO WITH TIM MOSS

*Cadillac Lounge, Deck 3, Forward - 7:30 pm, 9:30 pm, 10:30 pm & 11:30 pm*

Join Tim Moss as he plays live for your listening pleasure.



## MATCH YOUR MATE

*WaveBands, Deck 3, Forward - 10:45 pm*

It's time to play everyone's favorite couples game show - Match Your Mate!

# FUN FOR ALL AGES HIGHLIGHTS

## CRAFTS: ORIGAMI CREATIONS

*Promenade Lounge, Deck 3, Aft - 1:00 pm*

Your Cruise Staff teaches you the ancient art of paper folding.

## PICTIONARY CHALLENGE

*Promenade Lounge, Deck 3, Aft - 1:45 pm*

Join your Cruise Staff for this exciting game of fast draw.

## CRUISIN' FOR TRIVIA

*Promenade Lounge, Deck 3, Aft - 2:30 pm*

Navigate your way through a round of questions testing your general knowledge.

## CRAFTS: DOOR HANGERS

*Promenade Lounge, Deck 3, Aft - 3:15 pm*

Make some decorative door hangers with your Cruise Staff.



## CHIP-IT GOLF (12+)

*Lobby Atrium, Deck 3, Midship - 4:00 pm*

It's par for the course for our Guests 12 and older to compete on our special "greens" in this fun tournament.



## MEGA RAFFLE JACKPOT BINGO

*Bingo Pre-Sales start at 4:00 pm*

*WaveBands, Deck 3, Forward - 4:15 pm*

Four cash prizes and fun, Disney Cruise Line raffle prizes are up for grabs! Pre-Sales start 15 minutes prior to game.



## DISNEY JUNIOR PIRATE & PRINCESS DANCE PARTY

*Studio Sea, Deck 4, Midship - 4:30 pm*

Calling all Pirates and Princesses! Come join us for a family dance party featuring music and fun activities from Jake & the Neverland Pirates and Sofia the First. Whether you favor tiaras or treasure chests, there's something for you at our Disney Junior Pirate & Princess Dance Party. Sofia and Jake will be there - come join them for the fun!



## WHO WANTS TO BE A MOUSEKETEER?

*Studio Sea, Deck 4, Midship - 7:30 pm & 9:45 pm*

Your chance to get into the "hot seat" and win limited edition prizes. Or, play along as part of our live studio audience.



## SALUDOS AMIGOS FIESTA

*WaveBands, Deck 3, Forward - 7:30 pm*

Come see what Donald and his friends are up to this time. Bring the family out to this interactive dance party featuring fun Latin music! Your family will learn to salsa, merengue and just have a Latin good time!



## FAMILY SUPERSTAR KARAOKE

*Studio Sea, Deck 4, Midship - 10:30 pm*

Join your Cruise Staff in Studio Sea tonight and sing along to your favorite song - fun for everyone.





# YOUTH ACTIVITIES HIGHLIGHTS

## DINE & PLAY

A convenience for families dining at 8:15 pm, our Youth Activities counselors will be available at 9:15 pm at the entrance of Triton's, Parrot Cay and Animator's Palate dining rooms to bring registered children to join the fun in Disney's Oceaneer Club and Disney's Oceaneer Lab.



**Deck 5, Aft (7-18500) 7:00 am - 11:00 pm**

Infants and Toddlers can enjoy toys and activities at Flounder's Reef Nursery. Reservations are first come, first served so please stop by!



**Deck 5, Midship (7-1440) (3 - 12 years old) 9:00 am - 12:00 am**

### HATS OFF TO PETER PAN

3:45 pm

You'll believe you can fly. All it takes is faith, trust, and pixie dust and a special visit from Peter Pan! Rediscover the magic of Neverland!

### THE ROYAL BALL

10:00 pm

Attend your own Royal Ball and learn to be a prince or a princess.



**Deck 5, Midship (7-1445) (3 - 12 years old) 7:00 am - 12:00 am**

### PINATA PARTY

1:30 pm

It's time to celebrate with decorations, gift giving, and a whole fun and crazy party in the Oceaneer Lab!

### PISTON CUP CHALLENGE

7:15 pm

It's Dinoco time and you're part of the pit crew! Design your own race car and see if you've got what it takes to end up in the winner's circle!



**Deck 2, Midship (7-5810) (11 - 14 years old)**

**10:00 am - 1:00 am**

### FLOAT FUN TRIVIA

2:00 pm

How well do you know the ship? With a Coke Float as your reward, everyone is in the trivia spirit.

### PIZZA PERFECTION

10:15 pm

Where do pizzas come from? Let's make some of our own as we answer questions and add ingredients in preparation to eat them!



**Deck 11, Midship (7-1456) (14 - 17 years old)**

**11:00 am - 2:00 am**

### PIZZA PERFECTION

10:15 pm

Where do pizzas come from? Let's make some of our own as we answer questions and add ingredients in preparation to eat them!

# BUENA VISTA THEATRE

Deck 5, Aft  
**Today's Movies**

OC Open Captioning

DOLBY 3D



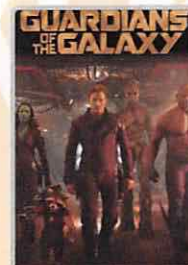
11:30 am  
Duration: 1 hr 39 mins  
Rating: PG



2:00 pm  
Duration: 1 hr 48 mins  
Rating: PG



5:15 pm & 8:00 pm  
Duration: 2 hrs 2 mins  
Rating: PG



10:45 pm  
Duration: 2 hrs 2 mins  
Rating: PG-13



## FAMILY DANCE PARTY

Come see what Donald and his friends are up to this time. Bring the family out to this interactive dance party featuring fun Latin music! Your family will learn to Salsa, Merengue and just have a Latin good time!

**WaveBands,  
Deck 3, Forward,  
7:30 pm**



## ADULT VARIETY ACT

Featuring the  
Comedy and Stunts  
of Matt Baker,  
as he entertains you in this  
adult exclusive show.

**WaveBands (18+),  
Deck 3, Forward,  
10:15 pm**

## YOUTH ACTIVITIES OPEN HOUSE

Open House is an opportunity for all to come and participate in a variety of exciting activities and free time in the Oceaneer Club, Oceaneer Lab, Flounder's Reef Nursery, Vibe and Edge throughout the cruise. During these times secured programming will still be offered in the other venue for those looking to check their children into care.

**Disney's Oceaneer Club: 9:00 am - 1:00 pm & 6:00 pm - 7:00 pm**

**Disney's Oceaneer Lab: 3:30 pm - 5:00 pm**

**Edge: 10:00 am - 12:00 pm & 6:00 pm - 7:30 pm**

**Vibe: 11:00 am - 1:00 pm & 7:30 pm - 9:30 pm**



# MORE TO ENJOY WHILE ONBOARD

## MORE MAGIC IN EUROPE

Set sail for Europe! Travel with Disney Cruise Line to the Mediterranean- a region that conjures up a romantic past. Home to some of the world's oldest civilizations, trade routes and cultures, this region offers a diverse blend of cities and cultures. Sail to such countries as Italy, France, Spain and Portugal. Begin your adventure today! Visit the Onboard Sales Desk for more information.



## DISNEY VACATION CLUB® GROUP PREVIEW

Want to learn more about taking magical vacations year after year? Please see a Disney Vacation Club representative on Deck 4, Midship, or call 7-2805 from your stateroom phone for more information about our interactive group presentation.



## PORT AND SHOPPING INFORMATION

Welcome to Grand Cayman every shoppers paradise! Join your Port Shopping Guide, Alyssa at Diamonds International, from 9:30 am - 11:30 am, for a shopping party. Here you will receive your free charm bracelet, face painting and enter a raffle to win a beautiful tanzanite necklace valued at over \$250!



**VISTA SPA**  
Deck 9, Forward - Phone: 7-1465

### PAMPER PACKAGE

Indulge with a 50 min full body relaxing Swedish massage and 25 min Refreshing Spa facial with scalp massage and foot and ankle massage 75 minutes for only \$149.



Welcome to the beautiful Cayman Islands. Take this opportunity to discover Grand Cayman's world renowned snorkeling. Dive down deep and explore the ocean floor on the Atlantis submarine or take an island tour by bus on the Grand Cayman Island tour. Visit our friendly Port Adventures team located Deck 3, Midship, and let us answer all your questions about Grand Cayman.

## SHOPPING

### COLLECT YOUR DISNEY CRUISE MEMORIES IN A DISNEY CRUISE LINE PHOTO ALBUM

Store the many happy memories you've photographed while on your Disney cruise inside a 2015 Disney Cruise Line photo album and scrapbook, available in Mickey's Mates, Deck 4, Forward. Mickey's Mates is also where you'll find additional commemorative 2015 Disney Cruise Line souvenirs.

### ATLANTIS GEMS

Atlantis Gems invites you to look at the imaginative creations of Morganite and Zultanite and custom cut gems when you visit Treasure Ketch. Discover the jewelry piece that best suits your style! Deck 4, Forward.

### CITIZEN ECO DRIVE WATCHES

It starts with a simple, yet revolutionary concept: a watch that never needs a battery. Citizen Eco-Drive technology harnesses the power of light from any natural or artificial light source and converts to energy. See the Collection of Mens and Ladies watches available in Treasure Ketch.

### H2O PLUS SPA PRODUCTS

Can't get enough of your stateroom's moisturizing H2O Plus Spa products? From shampoo and conditioner to body lotion and after sun care, take home their marine-rich formulas available in Treasure Ketch, Deck 4, Forward.

### CRUISE IN STYLE WITH GUESS ACCESSORIES

Head to Treasure Ketch for the ultimate destination of fashionable brand name accessories such as Guess watches, sunglasses, and handbags. Discover the elegant men's and women's watches paired with two-tone, silver, gold, and black-colored bands, with selected styles sparkling with Swarovski crystals. Complement your style with one of the various handbags available, adorned with the iconic Guess logo. Top off your look with a pair of stylish sunglasses and you're ready for day at the port! Treasure Ketch, Deck 4 Forward.

### ART GALLERY

Visit our Art Gallery on Deck 4, Midship from 7:30 p.m. - 9:00 p.m. to view a large selection of Disney art. Giclees on canvas themed pieces from princess movies to your favorite characters in a pirate style!

**DISNEY CRUISE LINE®**  
handbags by  
**DOONEY & BOURKE**  
available onboard!



**TREASURE KETCH | DECK 4, FORWARD**



### GET THE PICTURE!

Ask a friendly photographer about Get the Picture! and the incredible value of an unlimited digital photo package, which includes all of your stateroom's photos.

Visit Shutters today, as supplies are limited.

*\*Offer valid per stateroom only. Terms and conditions apply.  
Photos captured on your vacation are only available for purchase during this cruise.*

## IMPORTANT INFORMATION

### Security Notice

All Guests (including Children) who wish to disembark or embark the ship are required to present their Key to the World card at the gangway. A photo ID is also required for those Guests who are 18 years of age or older. Guests under the age of 18 are required to have a parent, guardian or other responsible adult sign an authorization form at the Guest Service Desk if they wish to go ashore unaccompanied or with any adult from another stateroom.

### Sunscreen/Insect Repellent Advisory

Use sunscreen first and protect against mosquito bites and related illnesses by applying insect repellent on top of sunscreen when going ashore. Insect repellent is available for purchase in Treasure Ketch.

### Cold and Flu Reminder

Please wash hands frequently and thoroughly, particularly before meals. Contact the Health Center by dialing 7-1923, should anyone in your party become ill.

### Inclement Weather

For the safety of all Guests, outdoor events may be changed due to unforeseen weather conditions.

### Corridor Quiet Hours

As a courtesy to all our Guests, please recognize quiet hallway hours from 10:00 pm till 8:00 am.

### Environmental Message

With Disney's commitment to the Environment please refrain from throwing anything over the Ship's side. Thank you.

### No Reserved Seats Policy

As a courtesy to all Guests we kindly advise that the saving of seats is not permitted in the Walt Disney Theatre, and the saving of the sun loungers is not permitted on Deck 9 and 10. Items left unattended will be returned to lost and found at Guest Services, Deck 3, Midship.

### Smoking

For the comfort of our guests, the following areas are designated as smoking areas:

- Deck 10, forward, Starboard side
- Deck 9, forward, Starboard side at Quiet Cove
- Deck 4, aft, starboard side from 6:00 pm to 6:00 am only (all of Deck 4 is non-smoking from 6:00 am to 6:00 pm.)

Smoking is prohibited inside all guest staterooms and on stateroom verandahs. Guests found smoking in their staterooms or on their verandahs will be charged a \$250 stateroom recovery fee.

Electronic cigarettes may only be used in designated smoking areas.

### Walt Disney Theatre

Theatrical performances may use artificial fog, strobe lights, pyrotechnics and other special effects. For the safety of our performers and the comfort of those around you, the use of any photography or video recording device or any electronic equipment is prohibited.

### Verandah Safety






Please do not leave any combustible materials on your balcony when not present in your stateroom for safety reasons.

Due to port regulations, when the ship is docked, the stores will remain closed.



Morning	8:30	8:45	9:00	9:15	9:30	9:45	10:00	10:15	10:30	10:45	11:00	11:15	11:30	11:45	12:00	12:15	12:30	12:45	1:00	1:15	1:30	
FUNNEL VISION					Virtual Tours Funnel Vision						Aladdin (G) Funnel Vision								The Little Mermaid (G) - En Espanol Funnel Vision			
BUENA VISTA THEATRE															Strange Magic (PG)  Open Captioning Duration: 1 Hour 39 Minutes							
CHARACTERS	Donald Preludes					Chip & Dale Preludes																
		Pluto Preludes																				
FUN FOR ALL AGES											Youth Activities Open House								Crafts: Origami Creations Promenade Lounge			
							Youth Activities Open House Edge															
			Youth Activities Open House Disney's Oceaneer Club																			
ADULTS	Friends of Bill W. Outlook Cafe																					
VIBE 14-17 YEARS OLD											Youth Activities Open House										Scavenger Hunt	
EDGE 11-14 YEARS OLD							Youth Activities Open House								That's Hilarious		Disney Cruise Line Trivia					
OCEANEER LAB 3-12 YEARS OLD	Game Challenge	Clarabelle's Moo Juice				Stitch's Great Adventure						Go Fetch				Animation Antics		Lunch				
OCEANEER CLUB 3-12 YEARS OLD																						
	Youth Activities Open House																					Pre-school Fun
					Memory Wall				Toddler Time for Families								King Triton's Royal Court		Where's Tink?			

Afternoon	1:45	2:00	2:15	2:30	2:45	3:00	3:15	3:30	3:45	4:00	4:15	4:30	4:45	5:00	5:15	5:30	5:45	6:00	6:15	6:30	6:45			
FUNNEL VISION	Hercules (G) Funnel Vision						Brother Bear (G) Funnel Vision						Mulan (G) Funnel Vision											
BUENA VISTA THEATRE	Big Hero 6 (PG)  DOLBY 3D Duration: 1 Hour 48 Minutes										The Hundred-Foot Journey (PG) Duration: 2 Hours 2 Minutes													
CHARACTERS	Chip & Dale Gazebo						Goofy Gazebo						Minnie Lobby Atrium (P)						Mickey Lobby Atrium (P)					
	Mickey Gazebo						Disney Junior Pirate & Princess Party Studio Sea						Daisy Dk 4, Mid						Donald Dk 4, Mid					
FUN FOR ALL AGES	Pictionary Challenge Promenade Lounge		Cruisin' for Trivia Promenade Lounge		Crafts: Door Hangers Promenade Lounge		Chip-It Golf (12+) Lobby Atrium		Bingo Pre Sales		Mega Raffle Jackpot WaveBands		Live Music with Roberto & Daria Lobby Atrium		Live Music with Midtown Promenade Lounge		Toddler Time for Families Captain's Closet, Disney's Oceaneer Club		Toy Story THE MUSICAL Walt Disney Theatre					
	Art of The Theme Show Tour Palo						Club 18*21 - Jenga Challenge Diversions						Footprint Analysis Vista Spa Fitness Center						Tongue & Pulse Analysis Vista Spa Fitness Center					
	Live Music with Dave Sharp Quiet Cove Pool						Dave Sharp Live Quiet Cove Pool						Pilates Vista Spa Fitness Center		Disney Cruise Line Trivia Vista Spa Fitness Center		Animation Cells Vista Spa Fitness Center		Youth Activities Open House					
VIBE 14-17 YEARS OLD	Disney Scene It		Game Challenge		Animation Antics				Disney Cruise Line Trivia		Animation Cells		4th Pigs Pasta Palace		Youth Activities Open House									
EDGE 11-14 YEARS OLD	Float Fun Trivia		GAGA Ball		Animation Cells		4th Pigs Pasta Palace		Youth Activities Open House															
OCEANEER LAB 3-12 YEARS OLD	Pinata Party		Pathfinders		Youth Activities Open House		Magic Show		Dinner															
	Flubber																							
OCEANEER CLUB 3-12 YEARS OLD	Pre-school Fun		Hats Off to Peter Pan		Parachute Games		Color Yourself Heroic		Youth Activities Open House															
	Big Top Fun Fest!		Dinner in Disney's Oceaneer Lab																					

Evening	7:00	7:15	7:30	7:45	8:00	8:15	8:30	8:45	9:00	9:15	9:30	9:45	10:00	10:15	10:30	10:45	11:00	11:15	11:30	11:45	12:00		
FUNNEL VISION				Virtual Tours Funnel Vision	WALL-E (G) Funnel Vision						Remember the Titans (PG) Funnel Vision												
BUENA VISTA THEATRE				The Hundred-Foot Journey (PG) Duration: 2 Hours 2 Minutes									Guardians of the Galaxy (PG-13) Duration: 2 Hours 2 Minutes										
CHARACTERS		Goofy <small>Lobby Atrium (P)</small>		Mickey <small>Lobby Atrium (P)</small>				Donald <small>Lobby Atrium (P)</small>		Mickey <small>Lobby Atrium (P)</small>													
		Daisy <small>Dk 4, Mid</small>		Minnie <small>Dk 4, Mid</small>				Pluto <small>Dk 4, Mid</small>		Chip & Dale <small>Dk 4, Mid</small>													
FUN FOR ALL AGES												Studio Sea				Studio Sea							
		Who Wants to be a Mouseketeer? <small>Studio Sea</small>								Live Music with Midtown <small>Promenade Lounge</small>				Live Music with Midtown <small>Promenade Lounge</small>									
ADULTS		70's Music Trivia <small>Diversions</small>		NFL Pro Bowl: Team Irvin Vs. Team Carter <small>Diversions (Subject to satellite availability)</small>					Live Piano with Tim Moss <small>Cadillac Lounge</small>		The Physical Comedy of MATT BAKER <small>WaveBands</small>				Cruise Staff DJ <small>WaveBands</small>								
		Tribute to Burt Bacharach <small>Cadillac Lounge</small>															Tim Moss LIVE <small>Cadillac Lounge</small>						
VIBE <small>14-17 YEARS OLD</small>	Sports Deck Fun		Youth Activities Open House 🥳								Gender Wars		Pizza Perfection										
EDGE <small>11-14 YEARS OLD</small>	Open House 🥳		Sports Deck Fun						Gender Wars		Dance Party		Pizza Perfection										
OCEANEER LAB <small>3-12 YEARS OLD</small>		Piston Cup Challenge 🏆						Marshmallow Olympics 🏆		Monstropolis Most Wanted						4 Square Competition							
OCEANEER CLUB <small>3-12 YEARS OLD</small>																							
		Toy Story Boot Camp 🏆						Memory Wall 🏆						Dress Up Fun 🏆		The Royal Ball 🏆					Wacky Relays 🏆		

Symbol for activities that will be repeated during the cruise



FOLD

Fold along the dotted lines and take me with you so you don't miss a bit of the fun!

FOLD

TO THE SPOTLIGHT SERIES  
SAVE IT! SERIES  
OPEN HOUSE

WALT DISNEY THEATRE  
WALT DISNEY THEATRE  
WALT DISNEY THEATRE

WALT DISNEY THEATRE  
WALT DISNEY THEATRE  
WALT DISNEY THEATRE



SUNDAY, JANUARY 25, 2015 - GRAND CAYMAN

# BUENA VISTA THEATRE

Deck 5, Aft

Open Captioning

DOLBY 3D



11:30 am  
Duration:  
1 hr 39 mins  
Rating: PG



2:00 pm  
Duration:  
1 hr 48 mins  
Rating: PG



5:15 pm  
& 8:00 pm  
Duration:  
2 hrs 2 mins  
Rating: PG



10:45 pm  
Duration:  
2 hrs 2 mins  
Rating: PG-13

## Character Appearances

### DONALD DUCK

Preludes - 8:30 am  
Deck 4, Midship - 5:45 pm  
Lobby Atrium (P) - 9:30 pm

### DAISY DUCK

Deck 4, Midship  
5:15 pm & 7:15 pm

### PLUTO

Preludes - 9:00 am  
Deck 4, Midship - 9:30 pm

### MINNIE MOUSE

Lobby Atrium (P) - 5:15 pm  
Deck 4, Midship - 7:45 pm

### CHIP & DALE

Preludes - 9:30 am  
Gazebo - 3:00 pm  
Deck 4, Midship - 10:00 pm

### MICKEY MOUSE

Gazebo - 3:30 pm  
Lobby Atrium (P) - 5:45 pm,  
7:45 pm & 10:00 pm

### GOOFY

Gazebo - 4:00 pm  
Lobby Atrium (P) - 7:15 pm



(P) - Port Side (S) - Starboard Side

Don't forget your Camera to capture those Magical Moments!  
Check here each day for all of today's Character Appearances or refer to the  
Character Board in the Lobby Atrium.

Meet-and-Greets will be advertised for the length of time the line will be  
open. To avoid disappointment, please meet at start time of appearances.

## YOUTH ACTIVITIES THEMED EXPERIENCES

**CLUBHOUSE SERIES**  
focuses on movement and  
features content which appeals  
to younger children.

**STORYBOOK SERIES**  
is designed with a strong  
connection to the Disney  
classic stories.

**JUMP UP! SERIES**  
includes large group games &  
movement-oriented activities.

**CREATE & INVENT SERIES**  
will have a tactile focus allowing  
children to create and admire  
their work.

**IN THE SPOTLIGHT SERIES**  
focuses on children's stage  
presence with lots of activities  
and enthusiasm.

**SOLVE IT! SERIES**  
are less active, but will challenge  
children with problem/solutions-  
based activities.

### YOUTH ACTIVITIES OPEN HOUSE

Activities for families, adults and children of all ages to enjoy together.

## SHIP DIRECTORY

### YOUTH ACTIVITIES

DISNEY'S OCEANEER CLUB	DECK 5, MID	9:00 AM - 12:00 AM
DISNEY'S OCEANEER LAB	DECK 5, MID	7:00 AM - 12:00 AM
EDGE	DECK 2, MID	10:00 AM - 1:00 AM
VIBE	DECK 11, MID	11:00 AM - 2:00 AM
FOUNDER'S REEF NURSERY	DECK 5, AFT	7:00 AM - 11:00 PM

### POOLS

Children under 12 years of age must have adult supervision in all pools.

GOOFY'S POOL	DECK 9, MID	9:00 AM - 6:00 PM 8:00 PM - 10:00 PM
MICKEY'S POOL	DECK 9, AFT	8:30 AM - 10:00 PM
MICKEY'S SLIDE	DECK 9, AFT	1:00 PM - 5:30 PM
MICKEY'S SPLASH ZONE	DECK 9, AFT	8:30 AM - 10:00 PM
QUIET COVE POOL (18+)	DECK 9, FWD	8:00 AM - 11:00 PM

Complimentary pool vests are available for children to use in the pools onboard.  
They are located on the pool deck.

### RECREATION

PORT ADVENTURES DESK	DECK 3, MID	7:00 AM - 10:00 AM 7:00 PM - 8:30 PM
VISTA FITNESS CENTER (18+)	DECK 9, FWD	6:00 AM - 10:00 PM
WIDE WORLD OF SPORTS DECK	DECK 10, FWD	- 24 HOURS

### GENERAL INFORMATION

BUENA VISTA THEATRE	DECK 5, AFT	SHOWTIMES
DISNEY VACATION CLUB DESK	DECK 4, MID	5:30 PM - 10:00 PM
FUNNEL VISION	DECK 9, MID	SHOWTIMES
GUEST SERVICES	DECK 3, MID	24 HOURS
HAIR BRAIDING	DECK 9, MID	4:00 PM - 7:00 PM
MEDICAL HEALTH CENTER	DECK 1, FWD	9:30 AM - 11:00 AM 4:30 PM - 7:00 PM
ONBOARD SALES DESK	DECK 4, MID	9:00 AM - 10:00 AM 4:30 PM - 6:00 PM 7:30 PM - 10:00 PM
PORT & SHOPPING DESK	DECK 3, MID	
PRELUDES	DECK 4, FWD	5:30 PM - 9:00 PM
QUARTER MASTERS (ARCADE)	DECK 9, MID	24 HOURS
SHUTTERS PHOTO GALLERY	DECK 4, AFT	5:00 PM - 10:30 PM
VISTA SPA AND SALON	DECK 9, FWD	8:00 AM - 10:00 PM
WALT DISNEY THEATRE	DECK 4, FWD	SHOWTIMES

### SHOPPING

ART GALLERY	DECK 4, MID	7:00 PM - 9:00 PM
MICKEY'S MATES	DECK 4, FWD	4:15 PM - 10:30 PM
RADAR TRAP (DUTY FREE)	DECK 3, FWD	6:00 PM - 10:30 PM
TREASURE KETCH	DECK 4, FWD	4:15 PM - 10:30 PM

## DINNER MENU

Animator's Palate - Pacific Rim Cuisine  
Parrot Cay - Caribbean Island Cuisine  
Triton's - French Cuisine

Dining Times: 5:45pm & 8:15pm

## DRINK OF THE DAY

Yellow Bird (Alcoholic)  
Passion Cream Freeze (Non-Alcoholic)

## WEATHER FORECAST

Today: Partly Cloudy  
High: 74°F/23°C  
Tomorrow: Partly Sunny  
High: 70°F/21°C

Evening Attire: Cruise Casual

## DINING & LOUNGES

### BREAKFAST

BEACH BLANKET BUFFET	DECK 9, AFT	6:30 AM - 10:15 AM
GOOFY'S GALLEY	DECK 9, AFT	6:30 AM - 8:30 AM
PARROT CAY	DECK 3, AFT	7:00 AM - 10:30 AM
TRITON'S (À-LA CARTE)	DECK 3, MID	7:30 AM - 9:30 AM

### LUNCH

BEACH BLANKET BUFFET	DECK 9, AFT	12:00 PM - 3:00 PM
GOOFY'S GALLEY	DECK 9, AFT	10:15 AM - 6:00 PM
PINOCCHIO'S PIZZERIA	DECK 9, MID	11:30 AM - 6:00 PM
PLUTO'S DOG HOUSE	DECK 9, AFT	11:30 AM - 9:30 PM
TRITON'S	DECK 3, MID	12:00 PM - 1:30 PM

### DINNER

ANIMATOR'S PALATE	DECK 4, AFT	5:45 PM & 8:15 PM
PARROT CAY	DECK 3, AFT	5:45 PM & 8:15 PM
TRITON'S	DECK 3, MID	5:45 PM & 8:15 PM
PALO (18+)	DECK 10, AFT	6:00 PM - 8:30 PM
BEACH BLANKET (À-LA CARTE)	DECK 9, AFT	6:30 PM - 8:30 PM

### LATE NIGHT SNACKS

PINOCCHIO'S PIZZERIA	DECK 9, MID	9:30 PM - 12:00 AM
----------------------	-------------	--------------------

### ADDED FEATURES

BEVERAGE STATION	DECK 9, AFT	6:00 AM - 12:00 AM
ICE CREAM AT GOOFY'S GALLEY	DECK 9, AFT	10:30 AM - 12:00 AM
ROOM SERVICE	DIAL 6801 OR 6802	24 HOURS

### ENTERTAINMENT - LOUNGES - BARS

Adults must be 21 and older to consume alcoholic beverages.

CADILLAC LOUNGE (18+)	DECK 3, FWD	6:00 PM - 12:00 AM
COVE CAFE (18+)	DECK 9, MID	6:00 AM - 12:00 AM
DIVERSIONS (18+ AFTER 9:00 PM)	DECK 3, FWD	4:00 PM - 12:00 AM
INTERNET CAFE	DECK 3, AFT	24 HOURS
OUTLOOK CAFE (18+)	DECK 10, MID	10:00 AM - 12:00 AM
PINOCCHIO'S PIZZERIA	DECK 9, MID	9:00 AM - 12:00 AM
PLUTO'S DOG HOUSE	DECK 9, AFT	11:30 AM - 6:00 PM
PRELUDES	DECK 4, FWD	5:30 PM - 9:00 PM
PROMENADE LOUNGE	DECK 3, AFT	8:00 AM - 12:00 AM
SIGNALS (18+)	DECK 9, FWD	9:30 AM - 11:00 PM
STUDIO SEA	DECK 4, MID	SHOWTIMES
WAVEBANDS (18+)	DECK 3, FWD	7:00 PM - 2:00 AM

Public Health Advisory: Consuming raw or under-cooked meats, poultry, seafood, shellfish, or eggs may increase your risk for food borne illness, especially if you have certain medical condition

All Ashore: Approx: 7:30 am  
Last Tender: 3:30 pm

Ship's Agent In Grand Cayman

Bodden Shipping Agency, Fifth Floor, Room 508, Gorang  
Avenue, GT Grand Cayman, Tel: 345-949-6254 or 345-949-7424