

# PERSONAL NAVIGATOR

SATURDAY, JANUARY 24, 2015

Sunrise: 7:12 am Sunset: 6:22 pm  
Evening Attire: Pirate or Cruise Casual

Today: Partly Sunny High: 78°F/26°C  
Tomorrow: Partly Cloudy High: 74°F/23°C

DAY AT SEA

## the freddy fusion

SCIENCE MAGIC SHOW

Assistance available at the entrance to the Walt Disney Theatre 30 minutes prior to show time.



## WALT DISNEY THEATRE

Deck 4, Forward  
6:00 pm & 8:45 pm

As a courtesy to all Guests, we kindly advise that the saving of seats is **not** permitted in the Walt Disney Theatre.

## Disney WONDER Fun Facts

Tonnage: 83,308 gross, 53,899 net

Length Overall: 294m / 964ft

(height of Eiffel Tower is 986ft)

Maximum Speed: 26 knots (30 miles per hour)

### Important Dates

Keel Laid: May 15, 1997

Launch Date: July 14, 1999

Inaugural Cruise: August 15, 1999

\* The anchor of the Disney Wonder weighs 34,250 lbs (15,569 kg) - the same weight as three elephants.

\* Over 50 nationalities make up the 1000 Crew members onboard.

\* Steamboat Willie stands proudly 10 ft tall on the bow of the ship. There are other characters in the artwork around him.

\* Donald and his nephew Huey hang painting the finishing touches on the stern.

## Don't Miss:

**Disney's Art of Entertaining: The Appetizer (18+)**  
Studio Sea, Deck 4, Midship - 10:15 am

Our chef cooks up the perfect start to any dinner party in this delicious demonstration. Recipes and tastings included!

### Disney Trivia

Promenade Lounge, Deck 3, Aft - 11:00 am

Navigate your way through a round of questions to test how much you really know about Disney.

### Chip-It Golf (12+)

Lobby Atrium, Deck 3, Midship - 2:45 pm

It's par for the course for our Guests 12 and older to compete on our special "greens" in this fun tournament.

### A Pirates Life For Me

Studio Sea, Deck 4, Midship - 9:30 pm

Calling all Pirates, we be! If ye have an adventurous spirit or pirate savvy, come spin the "Wheel of Destiny" for a treasure trove of fun be ripe for the takin' in this action packed pirate game show.



Book your next cruise onboard and save 10% on prevailing rates as quoted on [disneycruise.com](http://disneycruise.com). Plus, get an onboard credit and special deposit rate! Visit the Future Cruise Sales Desk for more information.

## DINNER MENU

Animator's Palate : Pirates  
Parrot Cay : Pirates  
Triton's : Pirates

## DRINK OF THE DAY

Pirates Surprise (Non-Alcoholic)  
Sunken Treasure (Alcoholic)

## IMPORTANT NUMBERS

Fire/Security: 7-3001  
Medical Emergency: 7-3000  
Health Center: 7-1923



# ADULT ACTIVITY HIGHLIGHTS

## VISTA SPA FITNESS CLASSES & SEMINARS

*Sunrise Stretch* - Vista Spa Fitness Center - 7:00 am  
*Tour De Cycle* - Vista Spa Fitness Center - 8:00 am  
*Body Sculpt Boot Camp* (Nom. Fee) - Vista Spa Fitness Center - 9:30 am  
*Back Pain Solutions* - Cadillac Lounge - 10:15 am  
*Ultimate Hair Cut Seminar* - Vista Spa & Salon - 10:30 am  
*Detox for Health & Weight Loss* - Outlook Cafe - 11:00 am  
*Inch Loss Made Easy With Ionithermi* - Outlook Cafe - 12:00 pm  
*Secrets to a Flatter Stomach* - Outlook Cafe - 2:00 pm  
*Introduction to Acupuncture* - Outlook Cafe - 3:15 pm  
*Tongue & Pulse Analysis* - Vista Spa Fitness Center - 4:00 pm  
*Pilates* - Vista Spa Fitness Center - 4:30 pm  
*Complimentary Footprint Analysis* - Vista Spa Fitness Center - 5:00 pm



## TASTING CLASSES

*Stem to Stern Wine Tasting* (21+) - Cadillac Lounge - 12:00 pm  
*Mixology* (21+) - Cadillac Lounge - 2:00 pm  
*Martini Tasting* (21+) - Cadillac Lounge - 4:00 pm  
*Cognac Tasting* (21+) - Outlook Cafe - 10:30 pm  
 Please make reservations for tastings at Guest Services for a nominal fee.  
 Tasting Seminars are only for Guests 21 and older.

## CLUB 18\*21 - LUNCH

*Triton's, Deck 3, Midship - 12:00 pm*  
 Get to know your fellow 18\*21 Guests over a spot of lunch.

## CLUB 18\*21 - MIXER

*Diversions, Deck 3, Forward - 5:30 pm*  
 Come join fellow cruisers your own age at our exclusive Club 18\*21 event.

## ANIMATION - MICKEY MOUSE

*Animator's Palette, Deck 4, Aft - 1:45 pm*  
 Your Cruise Staff teach you how to draw one of your favorite Disney friends - Mickey Mouse.

## ART OF THE THEME SHOW TOUR

*Palo, Deck 10, Aft - 4:00 pm*  
 Join us on a guided ship tour and discover the key ingredients that make the Disney Wonder.

## KRAZY KARAOKE

*WaveBands, Deck 3, Forward - 10:15 pm*  
 Take to the stage, grab a microphone and sing your favorite tunes. Then join your Cruise Staff DJ as they play some of your favorite tunes.



# FUN FOR ALL AGES HIGHLIGHTS

## WAKE UP WITH DISNEY JUNIOR

*Studio Sea, Deck 4, Midship - 8:30 am*

What happens when you experience unlimited fun with your favorite Disney Junior shows? You get an exciting dance party designed especially for preschoolers ages seven and under.



## DIAMOND & \$500 BINGO

*Bingo Pre-Sales start at 10:45 am*

*WaveBands, Deck 3, Forward - 11:00 am*

Join your Cruise Staff as we raffle off a diamond pendant courtesy of your Shopping Guide, as well as playing four games with four cash prizes. You stand a chance to walk home with \$500 should you cover the Big X pattern in 20 numbers or less on the fourth game. Pre-Sales start 15 minutes prior to game.



## DISNEY VACATION CLUB GROUP PREVIEW

*Studio Sea, Deck 4, Midship - 12:30 pm*

Want to learn more about taking magical vacations year after year? Please see a Disney Vacation Club representative on Deck 4, Midship, or call 7-2805 from your stateroom phone for more information about our interactive group presentation.



## PORT & SHOPPING TALK

*Buena Vista Theatre, Deck 5, Aft - 1:00 pm*

Join your Port and Shopping Guides to learn about the incredible shopping ashore this cruise!



## DISNEY CHANNEL ON DECK

*Deck Stage, Deck 9, Midship - 1:45 pm*

Don't change that channel! It's time for a Disney Channel afternoon poolside! Your Cruise Staff will host an exciting day of games and contests in between your favorite Disney Channel shows! So sit back, relax, and enjoy the sun!

## MOVIE SPECIAL: STRANGE MAGIC (PG)

*Walt Disney Theatre, Deck 4, Forward - 2:00 pm*

A madcap fairy tale musical inspired by 'A Midsummer Night's Dream.' Popular songs from the past six decades help tell the tale of a colorful cast of goblins, elves, fairies and imps, and their hilarious misadventures sparked by the battle over a powerful potion.

## \$5,000 MEGA JACKPOT BINGO

*Bingo Pre-Sales start at 3:45 pm*

*WaveBands, Deck 3, Forward - 4:00 pm*

Don't miss your chance to take home big money! 4 CASH prize games and great raffle prizes to be won! Complete the fourth game in 46 numbers or less and win the \$5,000 Mega Jackpot! Pre-Sales start 15 minutes prior to game.



## THE CHALLENGE OF DAVY JONES

*Deck Stage, Deck 9, Midship - 7:15 pm*

Join us on deck for an interactive video game experience. You'll be the crew as we find out who is the better Captain... Captain Jack or Captain Barbosa?

## PIRATE KARAOKE

*Studio Sea, Deck 4, Midship - 10:15 pm*

Be a singing superstar when you and your family take the stage and sing along to your favorite tunes, Pirate style.



# YOUTH ACTIVITIES HIGHLIGHTS

## DINE & PLAY

A convenience for families dining at 8:15 pm, our Youth Activities counselors will be available at 9:15 pm at the entrance of Triton's, Parrot Cay and Animator's Palate dining rooms to bring registered children to join the fun in Disney's Oceaneer Club and Disney's Oceaneer Lab.



**Deck 5, Aft (7-18500) 9:00 am - 11:00 pm**

Infants and Toddlers can enjoy toys and activities at Flounder's Reef Nursery. Reservations are first come, first served so please stop by!



**Deck 5, Midship (7-1440) 9:00 am - 11:00 pm**  
(3 - 12 years old)

## MAGIC SHOW

11:30 am

The Magnificent Magician will demonstrate to you some of the best known magic tricks on the sea.

## SO YOU WANT TO BE A PIRATE?

9:30 pm

Have you learned about life on the high seas? Do you have what it takes to be a pirate? Join Captain Hook and friends to find out!



**Deck 5, Midship (7-1445) 9:00 am - 12:00 am**  
(3 - 12 years old)

## 4TH PIGS PASTA PALACE

11:30 am

Build your very own house made out of pasta and play-doh for Franco, the Fourth Little Pig, to see if it will withstand nature's forces.

## A PIRATE'S LIFE FOR ME

8:30 pm

Yo ho, yo ho, a Pirate's Life for Me! Aarrgh me mateys! Put your knowledge to the test!



**Deck 2, Midship (7-5810) 9:00 am - 1:00 am**  
(11 - 14 years old)

## ANIMATION ANTICS

11:00 am

Learn simple animation techniques and then put your new skills to use by drawing some of your favorite Disney Characters.



**Deck 11, Midship (7-1456) 10:00 am - 2:00 am**  
(14 - 17 years old)

## DIVE INTO DJ'ING

3:00 pm

Hop on the turn tables and learn to scratch with our Club DJ.

## YOUTH ACTIVITIES OPEN HOUSE

Open House is an opportunity for all to come and participate in a variety of exciting activities and free time in the Oceaneer Club, Oceaneer Lab, Flounder's Reef Nursery, Vibe and Edge throughout the cruise. During these times secured programming will still be offered in the other venue for those looking to check their children into care.

Disney's Oceaneer Club: 9:00 am - 10:00 am & 6:00 pm - 8:30 pm

Disney's Oceaneer Lab: 2:00 pm - 3:15 pm

Edge: 9:00 am - 11:00 am & 5:00 pm - 6:30 pm

Vibe: 10:00 am - 12:00 pm

# PIRATES OF THE CARIBBEAN

## Pirates of The Caribbean: Challenge of Davy Jones

7:15 pm, Deck Stage, Deck 9, Midship

Join us on deck for an interactive video game experience. You'll be the crew as we find out who is the better captain... Captain Jack or Captain Barbosa.

**Pirates IN The Caribbean  
Deck Party: 7:30 pm  
Fireworks: 8:07 pm  
Deck Stage, Deck 9, Midship**

It's a Pirate Celebration, me hearties!  
Yer Disney Friends are all set for a swashbucklin' good time! Thar's a Pirate's Dinner all mapped out for yer feasting before 'ya hoist yourself to Deck 9 to enjoy a rowdy buccaneer bash we call Pirates IN the Caribbean Deck Party.

(Weather Permitting)

Viewing areas located Deck 9 Midship port side pizzeria and next to Pinocchio's Pizzeria port side.



# BUENA VISTA THEATRE

## Deck 5, Aft Today's Movies

DOLBY 3D

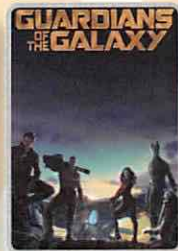
DOLBY 3D



8:45 am  
Duration:  
44 mins  
Rating: G



9:45 am  
Duration:  
1 hr 48 mins  
Rating: PG



2:30 pm  
Duration:  
2 hrs 2 mins  
Rating: PG-13

DOLBY 3D



5:30 pm & 8:00 pm  
Duration: 1 hr 48 mins  
Rating: PG



10:30 pm  
Duration: 1 hr 48 mins  
Rating: PG



# MORE TO ENJOY WHILE ONBOARD

## ALASKA AWAITS

Take your family on an Alaskan adventure they'll never forget! Sail through magnificent fjords fed by glaciers. Discover untamed nature and walk in the footsteps of prospectors. Begin your adventure today! Visit the Onboard Sales Desk to learn more about our special onboard booking offer.

## DISNEY VACATION CLUB® GROUP PREVIEW

Want to learn more about taking magical vacations year after year? Please see a Disney Vacation Club representative on Deck 4, Midship, or call 7-2805 from your stateroom phone for more information about our interactive group presentation.

## PORT AND SHOPPING INFORMATION

Do not miss the Port Shopping Show today at 1:00 pm in the Buena Vista Theatre, Deck 5, Aft. Find out why you do not want to miss shopping in the Caribbean. Everyone in attendance will receive a FREE Charm Bracelet. At 3:30 pm join Alyssa in the Promenade Lounge, Deck 3, Aft for the Diamond & Gemstone Seminar. Learn why tanzanite is a collector's stone and how to save when purchasing diamonds and gemstones in port. FREE tanzanite stud earrings for everyone in attendance.

## QUARTER MASTERS ARCADE

Demonstrate your cutting expertise at BARBERCUT and win an Ipod Nano or an Ipod Shuffle! Only at Quarter Masters Arcade, located on Deck 9, Midship, where the winners win.

## EARLY FLIGHT DEPARTURES

Guests with flights departing Miami prior to 11:30 am are kindly asked to notify Guest Services located on Deck 3, Midship no later than 10:00 pm today.

## ONBOARD AIRLINE CHECK IN SERVICE

Stop by the Guest Services Desk, Deck 3, Midship to find out about enrolling in our Onboard Airline Check In Service.

## Connect@Sea

We are now offering a NEW and improved Internet service to stay connected on your cruise like no other in the industry! Internet packages range from \$0.25 per MB - \$89.00 (1000 MB package). For more information contact your Connect@Sea Expert or Guest Services onboard.



## VISTA SPA

Deck 9, Forward - Phone: 7-1465

## PAMPER PACKAGE

Indulge with a 50 min full body relaxing Swedish massage and 25 min Refreshing Spa facial with scalp massage and foot and ankle massage 75 minutes for only \$149.



The best way to explore our ports of call is through the eyes of a Port Adventure. Why not swim with stingrays in Grand Cayman or see what there is to explore on . Stop by the Port Adventures Desk, Deck 3, Midship.

## SHOPPING

### LIGHT UP THE NIGHT

Glow merchandise is only available on Pirate Night. Don't miss your opportunity to light up the night. Please see a Merchandise Cast Member, Deck 9, on Pirate Night to complete your pirate attire.

### ATLANTIS GEMS PRESENTS PINK EMERALDS

Think pink with the subtle hues of Morganite, the beautiful pink gem sister to the emerald and named after avid gemstone collector and a titan of the 20th Century: John Pierpoint Morgan. Visit Treasure Ketch and discover the allure of this radiant charm, available in tender hues of peach and pink. Deck 4, Forward.

### PIRATE PARTY GEAR

Arrrrh...It's time to embrace your inner pirate! Make your way to Mickey's Mates, Deck 4, Forward, to find a treasure trove of pirate gear. Everything from costumes and apparel to hats and accessories.

### STYLISH JEWELRY AT TREASURE KETCH

For tax and duty free shopping, visit Treasure Ketch for trendy brand name handbags, timepieces, fragrances, and high-end jewelry. If you're on a budget but are still looking for stylish jewelry, at Treasure Ketch you'll also find popular jewelry brands such as Fossil and Crislu. Deck 4, Forward.

### CITIZEN ECO DRIVE WATCHES

It starts with a simple, yet revolutionary concept: a watch that never needs a battery. Citizen Eco-Drive technology harnesses the power of light from any natural or artificial light source and converts to energy. See the Collection of Mens and Ladies watches available in Treasure Ketch.

### GUESS BAGS IN STYLE

Treasure Ketch is your fashion destination. See the latest collections of "it" bags from this iconic fashion house. Tuck away your daily essentials in your new signature bag made just right for everyday wear.

Due to port regulations, when the ship is docked, the stores will remain closed.



## DISNEY CRUISE LINE®

handbags by

DOONEY & BOURKE

available onboard!

TREASURE KETCH | DECK 4, FORWARD



Ask a friendly photographer about Get the Picture! and the incredible value of an unlimited digital photo package, which includes all of your stateroom's photos.

Visit Shutters today, as supplies are limited.

\*Offer valid per stateroom only. Terms and conditions apply.

Photos captured on your vacation are only available for purchase during this cruise.

## IMPORTANT INFORMATION

### Security Notice

All Guests (including Children) who wish to disembark or embark the ship are required to present their Key to the World card at the gangway. A photo ID is also required for those Guests who are 18 years of age or older. Guests under the age of 18 are required to have a parent, guardian or other responsible adult sign an authorization form at the Guest Service Desk if they wish to go ashore unaccompanied or with any adult from another stateroom.

### Sunscreen/Insect Repellent Advisory

Use sunscreen first and protect against mosquito bites and related illnesses by applying insect repellent on top of sunscreen when going ashore. Insect repellent is available for purchase in Treasure Ketch.

### Cold and Flu Reminder

Please wash hands frequently and thoroughly, particularly before meals. Contact the Health Center by dialing 7-1923, should anyone in your party become ill.

### Inclement Weather

For the safety of all Guests, outdoor events may be changed due to unforeseen weather conditions.

### Corridor Quiet Hours

As a courtesy to all our Guests, please recognize quiet hallway hours from 10:00 pm til 8:00 am.

### Environmental Message

With Disney's commitment to the Environment please refrain from throwing anything over the Ship's side. Thank you.

### No Reserved Seats Policy

As a courtesy to all Guests we kindly advise that the saving of seats is not permitted in the Walt Disney Theatre, and the saving of the sun loungers is not permitted on Deck 9 and 10. Items left unattended will be returned to lost and found at Guest Services, Deck 3, Midship.

### Smoking

For the comfort of our guests, the following areas are designated as smoking areas:

- Deck 10, forward, Starboard side
- Deck 9, forward, Starboard side at Quiet Cove
- Deck 4, aft, starboard side from 6:00 pm to 6:00 am only (all of Deck 4 is non-smoking from 6:00 am to 6:00 pm.)

Smoking is prohibited inside all guest staterooms and on stateroom verandahs. Guests found smoking in their staterooms or on their verandahs will be charged a \$250 stateroom recovery fee.

Electronic cigarettes may only be used in designated smoking areas.

### Walt Disney Theatre

Theatrical performances may use artificial fog, strobe lights, pyrotechnics and other special effects. For the safety of our performers and the comfort of those around you, the use of any photography or video recording device or any electronic equipment is prohibited.

### Verandah Safety

Please do not leave any combustible materials on your balcony when not present in your stateroom for safety reasons.



Morning	8:30	8:45	9:00	9:15	9:30	9:45	10:00	10:15	10:30	10:45	11:00	11:15	11:30	11:45	12:00	12:15	12:30	12:45	1:00	1:15	1:30																			
FUNNEL VISION	Muppet Treasure Island (G) Funnel Vision							Tarzan (G) - En Espanol Funnel Vision							Virtual Tours Funnel Vision																									
BUENA VISTA THEATRE	Star Wars Rebels: Disney Channel XD (G) Duration: 44 Minutes					Frozen (PG) <b>DOLBY 3D</b> Duration: 1 Hour 48 Minutes										Port & Shopping Talk																								
CHARACTERS	Donald Preludes					Pluto Preludes					Mickey Preludes																													
FUN FOR ALL AGES						Daisy Preludes					Goofy Preludes					Minnie Preludes																								
	Toddler Time for Families Flounder's Reef < Starts at 8:00 am					Crafts: Animal Masks Promenade Lounge					Game Show: The Wheel Promenade Lounge					Bingo Pre Sales					Diamond & \$500 Bingo WaveBands					Pirate Crafts Promenade Lounge					Who Am I? Promenade Lounge					Port & Shopping Talk Buena Vista Theatre				
	Little Einstein's Adventure					Shuffleboard Tournament Deck 4, Port Side					Disney Trivia Promenade Lounge					Toddler Time for Families Captain's Closet, Disney's Oceaneer Club					Disney Vacation Club Group Preview Studio Sea					Wonder Quest WaveBands														
ADULTS	Friends of Bill W. Outlook Cafe					Movie Quotes Trivia Diversions					Club 18*21 - Lunch Triton's					Singles' Lunch Triton's																								
VIBE 14-17 YEARS OLD	Boot Camp (Nom. Fee) Vista Spa Fitness Center					Art of Entertaining: Appetizer Studio Sea					Detox for Health & Weight Loss Outlook Cafe					Stem to Stem Wine Tasting (21+) Cadillac Lounge																								
EDGE 11-14 YEARS OLD	Youth Activities Open House					Animation Antics					Disney Scene It					Goofy's World Records																								
OCEANEER LAB 3-12 YEARS OLD	Animation Antics					Flubber					4th Pigs Pasta Palace					Lunch																								
OCEANEER CLUB 3-12 YEARS OLD	Youth Activities Open House					Pre-school Fun					Magic Show					Parachute Games					Lunch																			
	Little Einstein's Adventure					Nemo's Coral Reef Adventure																																		
Afternoon	1:45	2:00	2:15	2:30	2:45	3:00	3:15	3:30	3:45	4:00	4:15	4:30	4:45	5:00	5:15	5:30	5:45	6:00	6:15	6:30	6:45																			
FUNNEL VISION	Disney Channel on Deck Funnel Vision					Teen Beach Movie - (TV-G) Funnel Vision							Pirates of the Caribbean I (PG-13) Funnel Vision																											
BUENA VISTA THEATRE	Guardians of the Galaxy (PG-13) <b>DOLBY 3D</b> Duration: 2 Hours 2 Minutes					Frozen (PG) Duration: 1 Hour 48 Minutes																																		
CHARACTERS	Goofy Gazebo					Mickey Gazebo					Pirate Mickey Mouse Lobby Atrium (P)					Minnie Lobby Atrium (S)																								
FUN FOR ALL AGES						Animation - Mickey Mouse Animator's Palate					Chip-It Golf (12+) Lobby Atrium					Bingo Pre Sales					\$5,000 Mega Jackpot <b>BINGO</b> WaveBands					Live Music with Roberto & Daria Promenade Lounge					<b>FREDDY HARRISON</b> Walt Disney Theatre									
						Pirate Trivia Quest Promenade Lounge					Basketball Free Throw Wide World Of Sports					Diamond and Gemstone Seminar Promenade Lounge					Live Music with Midtown Quiet Cove Pool																			
	Movie Special: Strange Magic (PG) Duration: 1 Hour 39 Minutes Walt Disney Theatre					Ultimate Disney Trivia Diversions					Art of The Theme Show Tour Palo					Singles' Mingle Diversions					Club 18*21 - Mixer Diversions																			
ADULTS	Animation - Mickey Mouse Animator's Palate					Secrets to a Flatter Stomach Outlook Cafe					Introduction to Acupuncture Outlook Cafe					Tongue & Pulse Analysis Vista Spa Fitness Center																								
VIBE 14-17 YEARS OLD	Marshmallow Olympics					Dive into DJ'ing					That's Hilarious					Animation Cells					Pirate Prep																			
EDGE 11-14 YEARS OLD	Sports Deck Fun					Picture This					Pirate Crafts					T-Shirt Making					Youth Activities Open House					Pirate Prep														
OCEANEER LAB 3-12 YEARS OLD	Ratatouille Cooking School					Color Yourself Heroic					Disney Infinity					Dinner					Pirate Prep																			
OCEANEER CLUB 3-12 YEARS OLD	Youth Activities Open House					Chip and Dale's Rescue Rangers					Game Challenge					Mouseketeer Training					Heffalump Hunting					Youth Activities Open House														
																							Pirate Face Painting																	
Evening	7:00	7:15	7:30	7:45	8:00	8:15	8:30	8:45	9:00	9:15	9:30	9:45	10:00	10:15	10:30	10:45	11:00	11:15	11:30	11:45	12:00																			
FUNNEL VISION	Pirates IN The Caribbean Deck Party Funnel Vision					Peter Pan (G) Funnel Vision					Treasure Planet (PG) Funnel Vision																													
BUENA VISTA THEATRE	Frozen (PG) Duration: 1 Hour 48 Minutes					Big Hero 6 (PG) <b>DOLBY 3D</b> Duration: 1 Hour 48 Minutes																																		
CHARACTERS	Pirate Mickey Mouse Lobby Atrium (P)					Peter Pan Preludes																																		
FUN FOR ALL AGES											<b>FREDDY HARRISON</b> Walt Disney Theatre										Pirate Karaoke Studio Sea					Live Music with Roberto & Daria Promenade Lounge														
	Live Music with Midtown Quiet Cove Pool					Midtown Live Quiet Cove Pool					Krazy Karaoke followed by Cruise Staff DJ WaveBands																													
	Live Piano With Joe Creamer Cadillac Lounge					Live Piano With Joe Creamer Cadillac Lounge					Live Music with Midtown Quiet Cove Pool																													
VIBE 14-17 YEARS OLD	Pirate Prep					Deck Party					Disney Fantasia: Music Evolved					Pump It Up					Game Challenge					Gender Wars					A Pirate's Life For Me									
EDGE 11-14 YEARS OLD	Pirate Prep					Deck Party					Disney Infinity					Gender Wars					Game Challenge					Dance Party					A Pirate's Life For Me									
OCEANEER LAB 3-12 YEARS OLD	Pirate Prep					Pirate Games					A Pirate's Life For Me					Glow Jam					Around the World in 7 days																			
OCEANEER CLUB 3-12 YEARS OLD	Youth Activities Open House					Pirate Games					So You Want to be a Pirate?																													

Symbol for activities that will be repeated during the cruise



FOLD

Fold along the dotted lines and take me with you so you don't miss any of the fun!

FOLD

IN THE SPOTLIGHT SERIES

SCOUT (T) SERIES

UP! SERIES

CREATE & INSPIRE SERIES

OPEN HOUSE

CLUBHOUSE SERIES

STORYBOOK SERIES



**SATURDAY, JANUARY 24, 2015 - DAY AT SEA**

# BUENA VISTA THEATRE

Deck 5, Aft

DOLBY 3D

DOLBY 3D

DOLBY 3D



8:45 am Duration: 44 mins Rating: G	9:45 am Duration: 1 hr 48 mins Rating: PG	2:30 pm Duration: 2 hrs 2 mins Rating: PG-13	5:30 pm & 8:00 pm Duration: 1 hr 48 mins Rating: PG	10:30 pm Duration: 1 hr 48 mins Rating: PG
--	--	---	---	---

## Character Appearances

### DONALD DUCK

Preludes - 8:45 am  
Gazebo - 3:00 pm

### DAISY DUCK

Preludes - 9:15 am

### PLUTO

Preludes - 9:45 am

### GOOFY

Preludes - 10:15 am  
Gazebo - 2:30 pm

### MICKEY MOUSE

Preludes - 10:45 am  
Gazebo - 3:30 pm

### MINNIE MOUSE

Preludes - 11:15 am

### CAPTAIN HOOK & MR SMEE

Preludes  
5:15 pm & 9:30 pm

### PIRATE MICKEY MOUSE

Lobby Atrium (P)  
5:15 pm & 9:30 pm

### PIRATE STITCH

Lobby Atrium (S)  
5:15 pm & 9:30 pm

### CAPTAIN JACK SPARROW

Deck 4, Midship  
5:30 pm & 9:45 pm

### PIRATE MINNIE MOUSE

Lobby Atrium (S)  
5:45 pm & 10:00 pm

### PETER PAN

Preludes - 5:45 pm & 10:00 pm

### PIRATES IN THE CARIBBEAN DECK PARTY

Deck Stage - 7:30 pm

(P) - Port Side (S) - Starboard Side

Don't forget your camera to capture those Magical Moments!  
Check here each day for all of today's Character Appearances or refer to the Character Board in the Lobby Atrium.

Meet-and-Greets will be advertised for the length of time the line will be open. To avoid disappointment, please meet at start time of appearances.

## YOUTH ACTIVITIES THEMED EXPERIENCES

**CLUBHOUSE SERIES**  
focuses on movement and features content which appeals to younger children.

**STORYBOOK SERIES**  
is designed with a strong connection to the Disney classic stories.

**JUMP UP! SERIES**  
includes large group games & movement-oriented activities.

**CREATE & INVENT SERIES**  
will have a tactile focus allowing children to create and admire their work.

**IN THE SPOTLIGHT SERIES**  
focuses on children's stage presence with lots of activities and enthusiasm.

**SOLVE IT! SERIES**  
are less active, but will challenge children with problem/solutions-based activities.

### YOUTH ACTIVITIES OPEN HOUSE

Activities for families, adults and children of all ages to enjoy together.

## SHIP DIRECTORY

### YOUTH ACTIVITIES

DISNEY'S OCEANEER CLUB	DECK 5, MID	9:00 AM - 11:00 PM
DISNEY'S OCEANEER LAB	DECK 5, MID	9:00 AM - 12:00 AM
EDGE	DECK 2, MID	9:00 AM - 1:00 AM
VIBE	DECK 11, MID	10:00 AM - 2:00 AM
FLOUNDER'S REEF NURSERY	DECK 5, AFT	9:00 AM - 11:00 PM

### POOLS

Children under 12 years of age must have adult supervision in all pools.

GOOFY'S POOL	DECK 9, MID	9:00 AM - 6:00 PM
MICKEY'S POOL	DECK 9, AFT	8:30 AM - 7:00 PM
MICKEY'S SLIDE	DECK 9, AFT	9:00 AM - 5:30 PM
MICKEY'S SPLASH ZONE	DECK 9, AFT	8:30 AM - 7:00 PM
QUIET COVE POOL (18+)	DECK 9, FWD	8:00 AM - 11:00 PM

Complimentary pool vests are available for children to use in the pools onboard.  
They are located on the pool deck

### RECREATION

PORT ADVENTURES DESK	DECK 3, MID	9:00 AM - 1:00 PM 2:00 PM - 5:00 PM 7:00 PM - 8:30 PM
VISTA FITNESS CENTER (18+)	DECK 9, FWD	6:00 AM - 10:00 PM
WIDE WORLD OF SPORTS DECK	DECK 10, FWD	- 24 HOURS

### GENERAL INFORMATION

BUENA VISTA THEATRE	DECK 5, AFT	SHOWTIMES
DISNEY VACATION CLUB DESK	DECK 4, MID	9:00 AM - 11:00 AM 2:00 PM - 10:00 PM
FUNNEL VISION	DECK 9, MID	SHOWTIMES
GUEST SERVICES	DECK 3, MID	24 HOURS
HAIR BRAIDING	DECK 9, MID	9:00 AM - 12:00 PM 2:00 PM - 7:00 PM
MEDICAL HEALTH CENTER	DECK 1, FWD	9:30 AM - 11:00 AM 4:30 PM - 7:00 PM
ONBOARD SALES DESK	DECK 4, MID	9:00 AM - 11:30 AM 3:30 PM - 6:00 PM 7:30 PM - 8:30 PM
PORT & SHOPPING DESK	DECK 3, MID	7:30 PM - 8:30 PM
PRELUDES	DECK 4, FWD	5:30 PM - 9:00 PM
QUARTER MASTERS (ARCADE)	DECK 9, MID	24 HOURS
SHUTTERS PHOTO GALLERY	DECK 4, AFT	10:00 AM - 10:00 PM
VISTA SPA AND SALON	DECK 9, FWD	8:00 AM - 10:00 PM
WALT DISNEY THEATRE	DECK 4, FWD	SHOWTIMES

### SHOPPING

ART GALLERY	DECK 4, MID	1:00 PM - 4:00 PM 7:00 PM - 9:00 PM
MICKEY'S MATES	DECK 4, FWD	9:00 AM - 10:30 PM
RADAR TRAP (DUTY FREE)	DECK 3, FWD	6:00 PM - 10:30 PM
TREASURE KETCH	DECK 4, FWD	9:00 AM - 10:30 PM

## DINNER MENU

Animator's Palate : Pirates  
Parrot Cay : Pirates  
Triton's : Pirates

Dining Times: 5:45pm & 8:15pm

**Evening Attire: Pirate or Cruise Casual**

## DRINK OF THE DAY

Sunken Treasure  
(Alcoholic)  
Pirates Surprise  
(Non-Alcoholic)

## WEATHER FORECAST

Today: Partly Sunny  
High: 78°F/26°C  
Tomorrow: Partly Cloudy  
High: 74°F/23°C

## DINING & LOUNGES

### BREAKFAST

BEACH BLANKET BUFFET	DECK 9, AFT	7:30 AM - 10:45 AM
GOOFY'S GALLEY	DECK 9, AFT	7:00 AM - 9:00 AM
PARROT CAY	DECK 3, AFT	8:30 AM - 10:30 AM
TRITON'S (À-LA CARTE)	DECK 3, MID	8:00 AM - 9:30 AM

### LUNCH

BEACH BLANKET BUFFET	DECK 9, AFT	12:00 PM - 2:00 PM
GOOFY'S GALLEY	DECK 9, AFT	10:45 AM - 6:00 PM
PARROT CAY	DECK 3, AFT	12:15 PM - 1:30 PM
PALO BRUNCH (18+)	DECK 10, AFT	10:00 AM - 12:30 PM
PINOCCHIO'S PIZZERIA	DECK 9, MID	11:00 AM - 6:00 PM
PLUTO'S DOG HOUSE	DECK 9, AFT	11:00 AM - 7:00 PM
TRITON'S	DECK 3, MID	12:00 PM - 1:30 PM

### DINNER

ANIMATOR'S PALATE	DECK 4, AFT	5:45 PM & 8:15 PM
PARROT CAY	DECK 3, AFT	5:45 PM & 8:15 PM
TRITON'S	DECK 3, MID	5:45 PM & 8:15 PM
PALO (18+)	DECK 10, AFT	6:00 PM - 8:30 PM
BEACH BLANKET (À-LA CARTE)	DECK 9, AFT	6:30 PM - 8:30 PM

### LATE NIGHT SNACKS

BEACH BLANKET PIRATE BUFFET	DECK 9, AFT	10:30 PM - 11:15 PM
PINOCCHIO'S PIZZERIA	DECK 9, MID	7:00 PM - 12:00 AM

### ADDED FEATURES

BEVERAGE STATION	DECK 9, AFT	6:00 AM - 12:00 AM
ICE CREAM AT GOOFY'S GALLEY	DECK 9, AFT	10:30 AM - 7:00 PM 8:30 PM - 12:00 AM
ROOM SERVICE	DIAL 6801 OR 6802	24 HOURS

### ENTERTAINMENT - LOUNGES - BARS

Adults must be 21 and older to consume alcoholic beverages.

CADILLAC LOUNGE (18+)	DECK 3, FWD	6:00 PM - 12:00 AM
COVE CAFE (18+)	DECK 9, MID	6:30 AM - 12:00 AM
DIVERSIONS (18+ AFTER 9:00 PM)	DECK 3, FWD	12:30 PM - 12:00 AM
INTERNET CAFE	DECK 3, AFT	24 HOURS
OUTLOOK CAFE (18+)	DECK 10, MID	8:00 AM - 12:00 AM
PINOCCHIO'S PIZZERIA	DECK 9, MID	9:00 AM - 12:00 AM
PRELUDES	DECK 4, FWD	5:30 PM - 9:00 PM
PROMENADE LOUNGE	DECK 3, AFT	8:00 AM - 12:00 AM
SIGNALS (18+)	DECK 9, FWD	9:30 AM - 12:00 AM
STUDIO SEA	DECK 4, MID	SHOWTIMES
WAVEBANDS (18+)	DECK 3, FWD	7:00 PM - 2:00 AM

Public Health Advisory: Consuming raw or under-cooked meats, poultry, seafood, shellfish, or eggs may increase your risk for food borne illness, especially if you have certain medical condition

## IMPORTANT NUMBERS

Fire/Security: 7-3001  
Medical EMERGENCY: 7-3000  
Health Center: 7-1923