

# PERSONAL NAVIGATOR



WEDNESDAY, FEBRUARY 4, 2015

Sunrise: 6:57 am Sunset: 6:19 pm  
 Evening Attire: Cruise Casual  
 All Ashore: 7:45 am All Aboard: 4:45 pm

Today: Sunny High: 80°F/27°C  
 Tomorrow: Sunny High: 76°F/24°C

SAN JUAN, PUERTO RICO



## The Comedy & Ventriloquism of Lynn Trefzger

WALT DISNEY THEATRE

Deck 3 & 4 Forward  
 6:15 pm & 8:30 pm



As a courtesy to all Guests, we kindly advise that the saving of seats is **not** permitted in the Walt Disney Theatre.



Assistance available at the entrance to the Walt Disney Theatre 30 minutes prior to show time.

### San Juan Port Information

With its cobblestone streets, brightly colored buildings and a history that stretches back to the Conquistadors, San Juan is a popular tourist destination. The oldest city under U.S. jurisdiction, it offers a warm climate throughout the year, with temperatures sizzling in the summer. Mountains cover over half of the island terrain, but the geography of Puerto Rico also includes rain forests, deserts and caves.

Old San Juan is the oldest settlement within Puerto Rico and is the historic colonial section of San Juan, Puerto Rico. In 1508, Juan Ponce de León founded the original settlement. In 1509, the settlement was abandoned and moved to a site which was then called "Puerto Rico" (meaning "rich port"). In 1521, the name "San Juan" was added, and the newer settlement was given its formal name of "San Juan Bautista de Puerto Rico."

Prior to the 19th century the area outside the city walls occupying the east side of Old San Juan was almost uninhabited. In 1865, the government of San Juan approved a resolution promoting the city expansion across the land of Puerta de Tierra. In 1897, the demolition was officially started and by 1899, the population of Puerta de Tierra had risen to 5,453 while the area comprising the old city had a population of roughly 18,000.



### ADULT QUIZ

Have you been told you are full of useless information about pop culture? If the answer is "Yes", then you have what it takes to play the high energy game show all about the world of Pop!

The Tube (18+),  
 Deck 4, Aft,  
 10:00 pm

### Don't Miss:

#### Playhouse D Lounge

D Lounge, Deck 4, Midship - 5:00 pm

Calling our youngest of cruisers! Here is a special playtime that is just for you. Come meet new friends; and join in on the fun as your Cruise Staff team takes you through interactive activities made just for you!

#### Officer Pin Trading

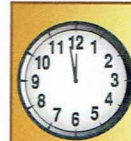
Preludes, Deck 3, Forward - 7:30 pm

Come trade pins with the Officers of the Disney Fantasy.

#### Saludos Amigos Fiesta

D Lounge, Deck 4, Midship - 10:15 pm

Come see what Donald and his friends are up to this time. Bring the family out to this interactive dance party featuring fun Latin music! Your family will learn to salsa, merengue and just have a Latin good time!



### TIME ZONE CHANGE

Remember to turn your clocks **BACK 1 HOUR** upon retiring on **WEDNESDAY** evening, or first thing **THURSDAY** morning.

Disney Cruise Line

PORT ADVENTURES



### IMPORTANT INFORMATION

Please check your tour tickets for meeting times and locations. Visit the Port Adventures desk, Deck 5, Midship for any questions.

### DINNER MENU

Animator's Palate : Prince & Princess  
 Enchanted Garden : Prince & Princess  
 Royal Court : Prince & Princess

### DRINK OF THE DAY

Cranberry No-Jito (Non-Alcoholic)  
 Mai Tai (Alcoholic)

### IMPORTANT NUMBERS

Fire/Security: 7-3001  
 Medical Emergency: 7-3000  
 Health Center: 7-1923



# ADULT ACTIVITY HIGHLIGHTS



## SENSES SPA FITNESS CLASSES & SEMINARS

*Sunrise Stretch* - Senses Fitness Center - 7:00 am  
*Body Sculpt Boot Camp* (Nom. Fee) - Senses Fitness Center - 7:30 am  
*Fab Abs* - Senses Fitness Center - 8:30 am  
*Burn Fat Faster* - Senses Fitness Center - 4:00 pm  
*Pilates* - Senses Spa & Salon - 5:00 pm  
*Complimentary Tongue & Pulse Analysis* - Senses Spa & Salon - 5:15 pm  
*Complimentary Footprint Analysis* - Senses Spa & Salon - 5:30 pm

CLUB  
18\*21

## CLUB 18\*21 - ARR-CADE SOCIAL

*Arr-cade, Deck 11, Aft - 4:00 pm*  
Come and play in the arcade with your fellow cruisers.

## PUB QUIZ

*O'Gills Pub, Deck 4, Aft - 1:15 pm*

Join us as we test your knowledge against your fellow Guests at our Pub Quiz challenge.

## ULTIMATE DISNEY TRIVIA

*O'Gills Pub, Deck 4, Aft - 2:45 pm*

Think you know all there is to know about Disney? Come test your knowledge at ultimate Disney trivia for the Adults.

## CLASSIC JAZZ WITH FINE WHINES

*La Piazza, Deck 4, Aft - 7:30 pm, 9:30 pm, 10:30 pm & 11:30 pm*

Join Fine Whines as they perform live for your listening pleasure.



## POP!

*The Tube, Deck 4, Aft - 10:00 pm*

Have you been told you are full of useless information about pop culture? If the answer is "Yes", then you have what it takes to play the high energy game show all about the world of Pop!

## 80'S MUSIC CHALLENGE

*The Tube, Deck 4, Aft - 10:30 pm*

"Moon Walk" back to the 80's as we put your musical knowledge of the decade to the test.

# FUN FOR ALL AGES HIGHLIGHTS

## XBOX KINECT - JUST DANCE CHALLENGE

*O'Gills Pub, Deck 4, Aft - 2:00 pm*

Come dance with new friends in this fun video game challenge.



## CHIP-IT GOLF (12+)

*Lobby Atrium, Deck 3, Midship - 3:00 pm*

It's par for the course for our Guests 12 and older to compete on our special "greens" in this fun tournament.

## PLAYHOUSE D LOUNGE

*D Lounge, Deck 4, Midship - 5:00 pm*

Calling our youngest of cruisers! Here is a special playtime that is just for you. Come meet new friends; and join in on the fun as your Cruise Staff team takes you through interactive activities made just for you!

## LIVE MUSIC WITH DREEM DUO

*Lobby Atrium, Deck 3, Midship - 5:15 pm, 7:20 pm, 9:30 pm & 10:30 pm*

Join Drem Duo as they perform live for your listening pleasure.

## DOUBLE UP JACKPOT BINGO

*Bingo Pre-Sales start at 7:15 pm*

*D Lounge, Deck 4, Midship - 7:30 pm*

Special double up session: All electronic cards purchased will be doubled! The snowball jackpot continues to grow and could be won today! Pre-Sales start 15 minutes prior to the game.



## OFFICER PIN TRADING

*Preludes, Deck 3, Forward - 7:30 pm*

Come trade pins with the Officers of the Disney Fantasy.

## THE QUEST

*The Tube, Deck 4, Aft - 7:30 pm*

Enjoy the wildest and wackiest scavenger team event on the seven seas!



## FAMILY SUPERSTAR KARAOKE

*D Lounge, Deck 4, Midship - 9:30 pm & 10:45 pm*

Join your Cruise Staff in D Lounge tonight and sing along to your favorite song - fun for everyone.





# YOUTH ACTIVITY HIGHLIGHTS

## DINE & PLAY

A convenience for families dining at 8:15 pm, our Youth Activities counselors will be available at 9:15 pm at the entrance of Royal Court, Enchanted Garden and Animator's Palate dining rooms to bring registered children to join the fun in the Youth Activity areas.



Deck 5, Midship (7-1440)  
(3-12 years old) 10:00 am - 12:00 am

## PARACHUTE GAMES

1:00 pm  
Have a blast playing fun games with our colorful parachutes.

## LITTLE EINSTEIN'S ADVENTURE

2:15 pm  
Your junior cruisers will have the time of their lives with this program inspired by their favorite show with fun activities guaranteed to make them feel like a little genius!



Deck 5, Midship (7-1445)  
(3-12 years old) 7:30 am - 12:00 am

## ANIMATION CELLS

10:30 am  
Learn what it takes to be a Disney Animator, then put your new skills to the test as you create your very own animation cell.

## FLOAT FUN TRIVIA

1:00 pm  
How well do you know the ship? With a Coke Float as your reward, everyone is in the trivia spirit.



Deck 13, Midship (7-9743)  
(11-14 years old) 9:00 am - 1:00 am

## WII CHALLENGE

12:00 pm  
Take on the challenge in this fun active computer game

## ANYONE CAN COOK: CUPCAKES

7:00 pm  
Anyone can cook as we work together to create some of our favorite treats. From our galley to yours; join our chef as they show you how to create cupcakes!



Entrance on Deck 4, Forward (7-9418)  
(14-17 years old) 11:00 am - 2:00 am

## ICE CREAM SOCIAL

1:00 pm  
I scream, you scream, we all scream for ice cream! Make your own frosty treat with your Counselors.

## THAT'S HILARIOUS

11:00 pm  
Ever wanted to show off your comedy skills? Then be a part of the cast for the crazy improv show "That's Hilarious" and put on a live show for your friends.

# BUENA VISTA THEATRE

Deck 4 & 5, Midship  
Today's Movies

DOLBY 3D



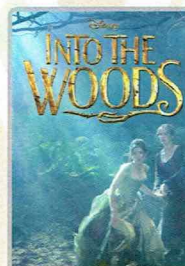
1:15 pm  
Duration: 1 hr 21 mins  
Rating: PG



3:15 pm  
Duration: 1 hr 48 mins  
Rating: PG



5:30 pm & 8:00 pm  
Duration: 2 hrs 2 mins  
Rating: PG



10:30 pm  
Duration: 2 hrs 4 mins  
Rating: PG



## FAMILY DANCE PARTY

Come see what Donald and his friends are up to this time. Bring the family out to this interactive dance party featuring fun Latin music! Your family will learn to Salsa, Merengue and just have a Latin good time!

D Lounge,  
Deck 4, Midship,  
10:15 pm



## ADULT THEME NIGHT

Hop onboard and hit the dance floor as we take you on a ride through the charts, partying it up to some of the hottest British hits!

The Tube (18+),  
Deck 4, Aft,  
11:00 pm

## YOUTH ACTIVITIES OPEN HOUSE

Open House is an opportunity for all to come and participate in a variety of exciting activities and free time in the Oceaneer Club, Oceaneer Lab, it's a small world nursery, Vibe and Edge throughout the cruise. During these times secured programming will still be offered in the other venue for those looking to check their children into care.

Disney's Oceaneer Club: 10:00 am - 1:00 pm  
Disney's Oceaneer Lab: 3:00 pm - 5:00 pm  
Edge: 9:00 am - 11:00 am & 5:00 pm - 6:30 pm  
Vibe: 11:00 am - 12:00 pm & 6:30 pm - 8:30 pm



# MORE TO ENJOY WHILE ONBOARD

## PLAN YOUR NEXT GETAWAY NOW

Our 3- and 4-night Bahamian Cruises are a perfect way to get an instant tropical recharge! Departing from Miami or Port Canaveral, most Bahamian cruises include a stop at Disney's private island, Castaway Cay. Visit the Onboard Sales Desk to learn more about our special onboard booking offer.



## DISNEY VACATION CLUB® GROUP PREVIEW

Want to learn more about taking magical vacations year after year? Please see a Disney Vacation Club representative on Deck 4, Midship, or call 7-2805 from your stateroom phone for more information about our interactive group presentation.



## PORT AND SHOPPING INFORMATION

Tune in channel 9 for updated San Juan information. Old San Juan is a charming & fun shopping destination! Walk to Calle Fortaleza Street and join your Port Shopping Guides at 'Blue Diamond' for the Pandora Bracelet Raffle at 11:30 am! Last chance for Cariloha Bamboo and Del Sol Color Change! Bring your shopping map and don't miss the great coupons on the gangway!



## Connect @ Sea

We are now offering a NEW and improved Internet service to stay connected on your cruise like no other in the industry! Internet packages range from \$0.25 per MB - \$89.00 (1000 MB package). For more information contact your Connect@Sea Expert or Guest Services onboard.

## ONBOARD AIRLINE CHECK IN

Stop by the Guest Services Desk, Deck 3, Midship to find out about enrolling in our Onboard Airline Check In Service.

## FREE ON DEMAND TV

Watch Disney movies, Hollywood features, ABC shows, and even captioned content, plus much more "On Demand" for FREE in the comfort of your stateroom! Bookmark your movie and come back to watch it later. Press MENU on your stateroom television remote control and follow the prompts.



Welcome to San Juan: endless sand, swashbuckling history lessons and wildly diverse tropical terrain. The sun-washed backyard of the United States is a place locals fittingly call the "Island of Enchantment." Please visit our friendly Port Adventures Team at the Port Adventures Desk, located in Deck 5, Midship to look for adventures ashore.

## SHOPPING

### FRAGRANCE OF THE DAY

Visit White Caps and check out today's featured fragrance as well as a vast selection of designer name fragrance brands such as Chanel and Flower by Kenzo. Deck 3, Forward.

### NEW DISNEY CRUISE LINE COMPASS COLLECTION MERCHANDISE

Commemorate your Disney cruise with the new nautical themed Disney Cruise Line merchandise from the Compass collection. Step into Sea Treasures, Deck 3 Forward, for the wide selection of Compass items including hats, t-shirts, and a fleece blanket.

### NEW DOONEY & BOURKE ONBOARD

Loved for their fine leather and unique designs, Dooney & Bourke creates styles that are sure to inspire. Visit White Caps and check out the new Dooney & Bourke handbags designed especially for Disney Cruise Line®. Deck 3, Forward.

### COLLECT YOUR DISNEY CRUISE MEMORIES IN A DISNEY CRUISE LINE PHOTO ALBUM

Store the many happy memories you've photographed while on your Disney cruise inside a 2015 Disney Cruise Line photo album and scrapbook, available in Mickey's Mainsail, Deck 3, Forward. Mickey's Mainsail is also where you'll find additional commemorative 2015 Disney Cruise Line souvenirs.

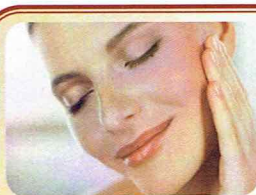
### "TAX FREE SHOPPING? YES, PLEASE!"

That's right! Do all of your tax and duty free shopping right onboard by visiting White Caps, Sea Treasures, and Mickey's Mainsail. Deck 3, Forward.

### OFFICER PIN TRADING

Check out the Disney Cruise Line pins when you visit Mickey's Mainsail, Deck 3, Forward. Later, join the Officers of the Disney Fantasy Cruise Ship for pin trading fun at 7:30 pm in Preludes, Deck 3, Forward.

Due to port regulations, when the ship is docked, the stores will remain closed.



**SENSES**  
SPA & SALON

### PAMPER PACKAGE

- 50 minute Full Body Massage
  - Foot & Ankle Massage
  - Indian Scalp Massage
  - 25 Minute Booster Facial
- ONLY \$149

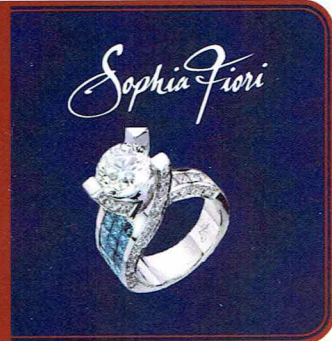
Call Senses Spa & Salon, 7-1465

### TODAY'S SHOPPING SPECIAL

Stop by White Caps to try on the world's most memorable white diamond pieces and commemorate your cruise.

White Caps, Deck 3, Forward.

**WHITE CAPS**



**Shutters**

### GET THE PICTURE

Order a Get the Picture! photo disc and share your vacation memories digitally! No need to decide which photos to take home now, select your photos from the comfort of your home.

Print, send and share your photos easily!

Hurry as supplies are limited. Offer available per stateroom.

*\*Terms and conditions apply. Photos captured on your vacation are only available for purchase during this cruise.*

## IMPORTANT INFORMATION

### Security Notice

All Guests (including children) who wish to disembark the ship are required to present their Key to the World card at the gangway. A photo ID is also required for those Guests who are 18 years of age or older. Guests under the age of 18 are required to have a parent, guardian or other responsible adult sign an authorization form at the Guest Service Desk if they wish to go ashore unaccompanied or with any adult from another stateroom.

**Sunscreen/Insect Repellent Advisory**  
Use sunscreen first and protect against mosquito bites and related illnesses by applying insect repellent on top of sunscreen when going ashore. Insect repellent is available for purchase in White Caps.

### Cold and Flu Reminder

Please wash hands frequently and thoroughly, particularly before meals. Contact the Health Center by dialing 7-1923, should anyone in your party become ill.

### Corridor Quiet Hours

As a courtesy to all our Guests, please recognize quiet hallway hours from 10:00 pm til 8:00 am

### Inclement Weather

For the safety of all Guests, outdoor events may be changed due to unforeseen weather conditions.

### Environmental Message

With Disney's commitment to the Environment, please refrain from throwing anything over the Ship's side. Thank you!

### No Reserved Seats Policy

As a courtesy to all our Guests, we kindly advise that the saving of seats is not permitted in the Walt Disney Theatre, and the saving of the sun loungers is not permitted on Deck 11, 12, and 13. Items left unattended will be returned to lost and found at Guest Services, Deck 3 Midship.

### Smoking

For the comfort of our Guests, the following areas are designated as smoking areas:  
\*Deck 13, forward, port side by Currents  
\*Deck 12, aft, port side outdoor area that is accessible through the Meridian Lounge  
\*Deck 4, aft, port side from 6:00 pm to 6:00 am only (all of Deck 4 is non-smoking from 6:00 am to 6:00 pm)  
Smoking is prohibited inside all Guest staterooms and on stateroom verandahs. Guests found smoking in their staterooms or on their verandahs will be charged a \$250 stateroom recovery fee. Electronic cigarettes may only be used in designated smoking areas.

### Walt Disney Theatre

Theatrical performances may use artificial fog, strobe lights, pyrotechnics and other special effects. For the safety of our performers and the comfort of those around you, the use of any photography, video recording device or any electronic equipment is prohibited.

### Verandah Safety

Please do not leave any combustible materials on your balcony when not present in your stateroom for safety reasons.



Morning	8:30	8:45	9:00	9:15	9:30	9:45	10:00	10:15	10:30	10:45	11:00	11:15	11:30	11:45	12:00	12:15	12:30	12:45	1:00	1:15	1:30					
FUNNEL VISION			A Bug's Life (G) Funnel Vision								Monsters, Inc. (G) Funnel Vision				Toy Story (G) Funnel Vision											
BUENA VISTA THEATRE	Alexander...Very Bad Day (PG) Duration: 1 Hour 21 Minutes																									
CHARACTERS	Don't forget your camera to capture those Magical Moments! Please refer to the Character Board in the Lobby Atrium for detailed Character appearances.																									
FUN FOR ALL AGES	Youth Activities Open House ☺ Edge										Youth Activities Open House ☺ Vibe															
	Board Games available in O'Gills Pub										Youth Activities Open House ☺ Disney's Oceaneer Club															
	Port Adventures - Please check your tickets for meeting times																									
ADULTS	Friends of Bill W. Outlook Fab Abs Senses Fitness Center																		Pub Quiz O'Gills Pub							
VIBE 14-17 YEARS OLD											Youth Activities Open House ☺				Teen Choice				Ice Cream Social							
EDGE 11-14 YEARS OLD											Youth Activities Open House ☺				Four Square				Wii Challenge				Float Fun Trivia			
OCEANEER LAB 3-12 YEARS OLD	Game Challenge		Four Square ☺			Pathfinders ☺						GAGA Ball ☺						Lunch			Float Fun Trivia					
											Animation Cells ☺								Craft Corner ☺							
OCEANEER CLUB 3-12 YEARS OLD											Youth Activities Open House ☺								Parachute Games ☺							
											Magic PlayFloor ☺								Journey to Neverland ☺							

Afternoon	1:45	2:00	2:15	2:30	2:45	3:00	3:15	3:30	3:45	4:00	4:15	4:30	4:45	5:00	5:15	5:30	5:45	6:00	6:15	6:30	6:45			
FUNNEL VISION	The Incredibles (PG) Funnel Vision										Cinderella (G) Funnel Vision										Toy Story 2 Funnel Vision			
BUENA VISTA THEATRE											Big Hero 6 (PG) <b>DOLBY 3D</b> Duration: 1 Hour 48 Minutes										The Hundred-Foot Journey (PG) Duration: 2 Hours 2 Minutes			
CHARACTERS											Donald Preludes		Minnie Lobby Atrium (P)		Mickey Preludes		Pluto Lobby Atrium (P)		Tinker Bell Lobby Atrium (V)		Goofy Lobby Atrium (P)			
											Jake Dk 4, Balcony		Peter Pan Dk 4, Balcony		Chip & Dale Preludes									
FUN FOR ALL AGES	Xbox Kinect Just Dance Challenge O'Gills Pub				Chip It GOLF Lobby Atrium (12+)								Playhouse D Lounge D Lounge						The Comedy & Ventriloquism of LYNN TREFZGER Walt Disney Theatre					
ADULTS					Ultimate Disney Trivia O'Gills Pub				Club 18*21 - Arr-cade Social Arr-cade				Team Trivia O'Gills Pub				Family Crafts D Lounge							
VIBE 14-17 YEARS OLD	Matinee Movie														Fifa Challenge				Anyone Can Cook Cupcakes				Open House ☺	
EDGE 11-14 YEARS OLD	GAGA Ball								Digi Hunt				Sports Deck Fun				Youth Activities Open House ☺							
OCEANEER LAB 3-12 YEARS OLD	Magic Show ☺		Relay Games ☺		Youth Activities Open House ☺														Relay Games ☺					
											Super Sloppy Science ☺								Dinner		Pictionary			
OCEANEER CLUB 3-12 YEARS OLD	Parachute Games		Little Einstein's Adventure ☺				Hula Hoop Jam		Game Challenge												Color Yourself Heroic			
											Dress Up Fun										Cruisin' with Crush ☺			

Evening	7:00	7:15	7:30	7:45	8:00	8:15	8:30	8:45	9:00	9:15	9:30	9:45	10:00	10:15	10:30	10:45	11:00	11:15	11:30	11:45	12:00			
FUNNEL VISION	Up (PG) Funnel Vision										Old Dogs (PG) Funnel Vision													
BUENA VISTA THEATRE											The Hundred-Foot Journey (PG) Duration: 2 Hours 2 Minutes										Into the Woods (PG) Duration: 2 Hours 4 Minutes			
CHARACTERS	Genie Lobby Atrium (H)		Aladdin Lobby Atrium (H)						Genie Lobby Atrium (H)		Tinker Bell Lobby Atrium (V)		Stitch Preludes											
	Cinderella Lobby Atrium (P)		Mickey Dk 4, Balcony		Tinker Bell Lobby Atrium (V)		Minnie Dk 4, Balcony				Mickey Dk 4, Balcony		Tiana Lobby Atrium (P)		Minnie Dk 4, Balcony									
FUN FOR ALL AGES	Bingo Pre-Sales		Double Up Jackpot Bingo D Lounge				The Comedy & Ventriloquism of LYNN TREFZGER Walt Disney Theatre				Family KARAOKE D Lounge		Family KARAOKE D Lounge		Family KARAOKE D Lounge									
	The Quest The Tube												Live Music with Dream Duo Lobby Atrium		Dreem Duo LIVE Lobby Atrium									
ADULTS					Live Guitar with Mike Archer O'Gills Pub								DJ Requests The Tube		80's Music Challenge The Tube		Club DJ Jon Blak The Tube		Fine Whines LIVE La Piazza					
VIBE 14-17 YEARS OLD	Youth Activities Open House ☺										Aquaduck Fun				Gotcha Registration				That's Hilarious		Karaoke			
EDGE 11-14 YEARS OLD	Anyone Can Cook Cupcakes										Aquaduck Fun				ESPN Dream Team Draft Day - Baseball				Gender Wars		Pajamarama Movie Night			
OCEANEER LAB 3-12 YEARS OLD											Stitch's Adventure Squad				Craft Corner ☺				Super Sloppy Science ☺				Game Challenge	
	Face Paint Time ☺																		Four Square ☺					
OCEANEER CLUB 3-12 YEARS OLD	Color Yourself Heroic		Once Upon a Time		Dance Party ☺		Wii Challenge				Animation Antics		Pathfinders ☺						Magic PlayFloor					
															Cartoon Time		Dress Up Fun						Craft Corner ☺	

Symbol for activities that will be repeated during the cruise

YOUTH ACTIVITIES OPEN HOUSE

FOLD

Fold along the dotted lines and take me with you so you don't miss any of the fun!

FOLD

ON THE SPOTLIGHT SERIES

SOLVE IT! SERIES

JUMP UP! SERIES

CREATE & INVENT SERIES

CLUBHOUSE SERIES

STORYBOOK SERIES



WEDNESDAY, FEBRUARY 4, 2015 - SAN JUAN, PUERTO RICO

# BUENA VISTA THEATRE

Deck 4 & 5, Midship

**DOLBY 3D**



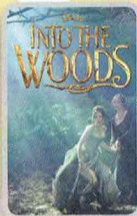
1:15 pm  
Duration:  
1 hr 21 mins  
Rating: PG



3:15 pm  
Duration:  
1 hr 48 mins  
Rating: PG



5:30 pm & 8:00 pm  
Duration:  
2 hrs 2 mins  
Rating: PG



10:30 pm  
Duration:  
2 hrs 4 mins  
Rating: PG

## Character Appearances

**DONALD DUCK**  
Preludes - 4:15 pm

**CHIP & DALE**  
Preludes - 5:15 pm

**JAKE - THE NEVERLAND PIRATE**  
Deck 4, Balcony - 4:30 pm

**ALADDIN & PRINCESS JASMINE**  
Lobby Atrium (H)  
5:30 pm, 7:45 pm & 10:00 pm

**MINNIE MOUSE**  
Lobby Atrium (P) - 4:30 pm  
Deck 4, Balcony  
8:00 pm & 10:00 pm

**CAPTAIN HOOK & MR SMEE**  
Deck 4, Balcony - 5:30 pm  
Preludes - 9:30 pm

**MICKY MOUSE**  
Preludes - 4:45 pm  
Deck 4, Balcony  
7:30 pm & 9:30 pm

**GOOFY**  
Lobby Atrium (P) - 5:30 pm

**PLUTO**  
Lobby Atrium (P) - 5:00 pm

**CINDERELLA**  
Lobby Atrium (P) - 7:15 pm

**GENIE**  
Lobby Atrium (H)  
5:00 pm, 7:15 pm & 9:30 pm

**ARIEL**  
Lobby Atrium (P) - 7:45 pm

**PETER PAN**  
Deck 4, Balcony - 5:00 pm

**PRINCESS TIANA**  
Lobby Atrium (P) - 9:45 pm

**TINKER BELL**  
Lobby Atrium (V)  
5:15 pm, 7:45 pm & 9:45 pm

**STITCH**  
Preludes - 10:00 pm

(H) Hallway - (S) Starboard Side  
(P) Port Side - (V) Vestibule

For details of daily Disney character appearances, refer to the character line in your Navigator Grid or the digital character board in the Lobby Atrium.

## YOUTH ACTIVITIES THEMED EXPERIENCES

**CLUBHOUSE SERIES**  
focuses on movement and features content which appeals to younger children.

**JUMP UP! SERIES**  
includes large group games & movement-oriented activities.

**IN THE SPOTLIGHT SERIES**  
focuses on children's stage presence with lots of activities and enthusiasm.

**STORYBOOK SERIES**  
is designed with a strong connection to the Disney classic stories.

**CREATE & INVENT SERIES**  
will have a tactile focus allowing children to create and admire their work.

**SOLVE IT! SERIES**  
are less active, but will challenge children with problem/solutions-based activities.

### YOUTH ACTIVITIES OPEN HOUSE

A non-secured program with activities for families, adults and children of all ages to enjoy together.

## SHIP DIRECTORY

### YOUTH ACTIVITIES

DISNEY'S OCEANEER CLUB	DECK 5, MID	10:00 AM - 12:00 AM
DISNEY'S OCEANEER LAB	DECK 5, MID	7:30 AM - 12:00 PM
EDGE	DECK 13, MID	9:00 AM - 1:00 PM
VIBE	DECK 4, FWD	11:00 AM - 2:00 PM
IT'S A SMALL WORLD NURSERY	DECK 5, MID	7:30 AM - 11:00 PM

### POOLS & MORE

\* Children under 12 must have adult supervision in pool areas.

AQUADUCK	DECK 12, MID	9:00 AM - 11:00 PM
AQUALAB	DECK 12, AFT	1:00 PM - 7:00 PM
DONALD'S POOL	DECK 11, MID	9:00 AM - 6:00 PM 8:00 PM - 10:00 PM
MICKY'S POOL	DECK 11, MID	8:30 AM - 10:30 PM
MICKY'S SLIDE	DECK 11, MID	9:00 AM - 6:00 PM
NEMO'S REEF	DECK 11, MID	9:00 AM - 6:00 PM
QUIET COVE POOL (18+)	DECK 11, FWD	8:00 AM - 10:00 PM
SATELLITE FALLS	DECK 13, FWD	6:00 AM - 8:00 PM

Complimentary pool vests are available for children to use in the pools onboard. They are located on the pool deck.

### RECREATION

GOLF/SPORTS SIMULATORS	DECK 13, AFT	9:00 AM - 6:00 PM
GOOFY GOLF	DECK 13, AFT	8:00 AM - 10:00 PM
GOOFY'S SPORTS DECK	DECK 13, AFT	8:00 AM - 6:00 PM
MIDSHIP DETECTIVE AGENCY	DECKS 2 & 5, MID	9:00 AM - 10:00 PM
PORT ADVENTURES DESK	DECK 5, MID	7:30 AM - 11:00 AM
SENSES FITNESS CENTER (18+)	DECK 11, FWD	6:30 AM - 10:00 PM

### GENERAL INFORMATION

ARR-CADE	DECK 11, AFT	24 HOURS
DISNEY VACATION CLUB	DECK 4, MID	8:30 AM - 10:30 PM 5:00 PM - 10:00 PM
GUEST SERVICES	DECK 3, MID	24 HOURS
MEDICAL HEALTH CENTER	DECK 1, FWD	9:30 AM - 11:00 AM 4:30 PM - 7:00 PM
ONBOARD SALES DESK	DECK 4, MID	8:00 AM - 9:00 AM 4:00 PM - 6:00 PM 7:30 PM - 10:00 PM
PORT & SHOPPING DESK	DECK 4, MID	7:30 PM - 8:30 PM
PRELUDES	DECK 3, FWD	5:45 PM - 6:30 PM 8:00 PM - 8:45 PM
SENSES SPA AND SALON	DECK 11, FWD	8:00 AM - 10:00 PM
SHUTTERS PHOTO GALLERY	DECK 4, MID	5:30 PM - 10:30 PM
SHUTTERS DIGITAL	DECK 4, MID	24 HOURS

### SHOPPING

BIBBIDI BOBBIDI BOUTIQUE	DECK 5, MID	9:00 AM - 9:00 PM
MICKY'S MAINSAIL	DECK 3, FWD	5:30 PM - 11:00 PM
QUACKS	DECK 11, MID	
SEA TREASURES	DECK 3, FWD	5:30 PM - 11:00 PM
VISTA GALLERY	DECK 4, MID	6:00 PM - 10:00 PM
WHITE CAPS	DECK 3, FWD	5:30 PM - 11:00 PM
WHOZITS & WHATZITS	DECK 11, MID	

<b>DINNER MENU</b>	Animator's Palate : Prince & Princess	<b>DRINK OF THE DAY</b>	Cranberry No-Jito (Non-Alcoholic)	<b>WEATHER FORECAST</b>	Today: Sunny High: 80°/27°C
	Enchanted Garden : Prince & Princess		Mai Tai (Alcoholic)		Tomorrow: Sunny High: 76°/24°C
	Royal Court : Prince & Princess				
Dining Times: 5:45pm & 8:15pm		<b>Evening Attire: Cruise Casual</b>			

## DINING & LOUNGES

### BREAKFAST

CABANAS CONTINENTAL	DECK 11, AFT	6:15 AM - 6:45 AM
CABANAS	DECK 11, AFT	6:45 AM - 10:30 AM
ENCHANTED GARDEN	DECK 2, MID	8:00 AM - 9:45 AM
ROYAL COURT	DECK 3, MID	8:00 AM - 9:30 AM

### LUNCH

CABANAS	DECK 11, AFT	12:00 PM - 2:15 PM
FILLMORE'S FAVORITES	DECK 11, MID	10:30 AM - 6:30 PM
LUIGI'S PIZZA	DECK 11, MID	10:30 AM - 6:30 PM
ROYAL COURT	DECK 3, MID	12:00 PM - 1:30 PM
TOW MATER'S GRILL	DECK 11, MID	10:30 AM - 11:00 AM

### DINNER

ANIMATOR'S PALATE	DECK 3, AFT	5:45 PM & 8:15 PM
ENCHANTED GARDEN	DECK 2, MID	5:45 PM & 8:15 PM
ROYAL COURT	DECK 3, MID	5:45 PM & 8:15 PM
CABANAS TABLE SERVICE	DECK 11, AFT	6:30 PM - 8:30 PM
PALO (18+) (RESERVATIONS REQ. & NOM. FEE APPLIES)	DECK 12, AFT	6:00 PM - 8:30 PM
REMY (18+) (RESERVATIONS REQ. & NOM. FEE APPLIES)	DECK 12, AFT	6:00 PM - 8:30 PM

### LATE NIGHT SNACKS

LA PIAZZA (18+)	DECK 4, AFT	10:45 PM - 11:45 PM
LUIGI'S PIZZA	DECK 11, MID	9:30 PM - 12:30 AM

### ADDED FEATURES

BEVERAGE STATION	DECK 11, MID	24 HOURS
EYE SCREAM	DECK 11, MID	11:00 AM - 11:00 PM
ROOM SERVICE	DIAL 0	24 HOURS

### ENTERTAINMENT - LOUNGES - BARS

Adults must be 21 and older to consume alcoholic beverages.

BON VOYAGE	DECK 3, MID	2:00 PM - 11:30 PM
COVE BAR (18+)	DECK 11, FWD	11:00 AM - 11:00 PM
COVE CAFE (18+)	DECK 11, FWD	7:00 AM - 12:00 AM
CURRENTS (18+)	DECK 13, FWD	11:00 AM - 11:00 PM
D LOUNGE	DECK 4, MID	SHOWTIMES
FROZONE TREATS	DECK 11, MID	11:00 AM - 10:00 PM
LA PIAZZA (18+ AFTER 9:00 P.M.)	DECK 4, AFT	4:00 PM - 12:00 AM
MERIDIAN (18+)	DECK 12, AFT	3:00 PM - 12:30 AM
O'GILLS PUB (18+ AFTER 9:00 PM)	DECK 4, AFT	3:00 PM - 12:00 AM
OOH LA LA (18+)	DECK 4, AFT	5:00 PM - 12:00 AM
OUTLOOK	DECK 14, MID	
SKYLINE (18+)	DECK 4, AFT	5:00 PM - 12:30 AM
THE TUBE (18+ AFTER 9:00 P.M.)	DECK 4, AFT	7:00 PM - 8:30 PM 10:00 PM - 2:00 AM
VISTA CAFE	DECK 4, MID	7:00 AM - 10:30 PM
WAVES	DECK 12, AFT	1:00 PM - 6:00 PM

Public Health Advisory: Consuming raw or under-cooked meats, poultry, seafood, shellfish, or eggs may increase your risk for food borne illness, especially if you have certain medical condition



## TIME ZONE CHANGE

Remember to turn your clocks **BACK 1 HOUR** upon retiring on **WEDNESDAY** evening, or first thing **THURSDAY** morning.

All Ashore: Approx. 7:45 am  
All Aboard: 4:45 pm

### SHIP'S AGENT IN SAN JUAN

360 San Francisco Street,  
San Juan, Puerto Rico 00901  
Phone (787)725-2532, Fax (787) 724-0339

### IMPORTANT NUMBERS

Fire/Security: 7-3001  
Medical EMERGENCY: 7-3000  
Health Center: 7-1923