

PERSONAL NAVIGATOR

MONDAY, NOVEMBER 17, 2014

Sunrise: 6:40 am Sunset: 6:00 pm
Evening Attire: Formal

Today: Sunny High: 80°F/27°C
Tomorrow: Cloudy High: 78°F/26°C

DAY AT SEA

TWICE CHARMED

AN ORIGINAL TWIST ON THE CINDERELLA STORY

STEP BACK IN TIME TO EXPERIENCE THE STORY OF CINDERELLA IN A MAGICAL NEW WAY. ENJOY THIS MAGNIFICENT MUSICAL PRODUCTION WITH YOUR FAVORITE CHARACTERS - AND A FEW NEW ONES!

WALT DISNEY THEATRE

Deck 4, Forward
6:15 pm & 8:30 pm

As a courtesy to all Guests, we kindly advise that the saving of seats is **not** permitted in the Walt Disney Theatre.



Assistance available at the entrance to the Walt Disney Theatre 30 minutes prior to show time.



Disney MAGIC Fun Facts

Tonnage: 84,000

Length Overall: 984 Feet

Ship's Registry: The Bahamas

Important Dates

Keel Laid: October 31, 1996

Launch Date: April 12, 1997

Inaugural Cruise: July 30, 1998

• The Magic was built by a process called Jumboisation (in 2 separate sections) in Italy at the Fincantieri Maghera Shipyards (stern) and the Fincantieri Ancona Shipyards (bow). The joint of the ship is just in front of Lumiere's.

• The anchor of the Disney Magic weighs 28,200 lbs (12,802.8kg) - the same weight as three elephants.

• Over 50 nationalities make up the 960 Crew Members on board.

Santa's WINTER WONDERLAND BALL

An evening of spectacle and holiday enchantment, join the Cruise Director and our holiday Snowbells as we celebrate the arrival of a very special holiday guest - Santa Claus! Get your cameras ready. You don't want to miss Santa and the World Famous Disney Characters as they create a Winter Wonderland....at sea!

Lobby Atrium,
Deck 3, Midship,
10:15 pm

Don't Miss:

Jack-Jack's Incredible Diaper Dash

Lobby Atrium, Deck 3, Midship - 11:30 am

Calling all baby cruisers! It's time to take to the mat to see who's the fastest crawler of the seven seas! Register your baby 15 minutes prior to the big race.

Variety Show: John Charles

Walt Disney Theatre, Deck 4, Forward - 1:45 pm

Featuring the Music & Comedy of John Charles, in this fun for all the family cabaret style show.

Captain's Welcome Reception

Lobby Atrium, Deck 3, Midship - 5:15 pm & 7:30 pm

Enjoy a cocktail with the Officers of this beautiful Disney Cruise Line ship then meet the Captain have a photograph taken with him.

Magic Workshop (6+)

Fathoms, Deck 3, Forward - 7:30 pm

Magic Dave teaches you the basics of magic in this fun family event.

Game Show: The Wheel

Promenade Lounge, Deck 3, Aft - 9:45 pm

A special version of this popular TV game show.



TIME ZONE CHANGE

Remember to turn your clocks BACK 1 HOUR upon retiring on MONDAY evening, or first thing TUESDAY morning.

Disney Cruise Line

PORT ADVENTURES

Stop by the Port Adventures Desk, located on Deck 3, Midship, where our friendly team will assist you to plan your adventure to our ports of call!

DINNER MENU

Animator's Palate : Pacific Rim Cuisine
Carioca's : South American Cuisine
Lumiere's : French Cuisine

DRINK OF THE DAY

Deep Blue Sea (Alcoholic)
Mango Crush (Non-Alcoholic)

IMPORTANT NUMBERS

Fire/Security: 7-3001
Medical Emergency: 7-3000
Health Center: 7-1923

ADULT ACTIVITY HIGHLIGHTS

SENSES SPA FITNESS CLASSES & SEMINARS

Sunrise Stretch - Senses Spa Fitness Center - 7:00 am
Fab Abs - Senses Spa Fitness Center - 7:30 am
Body Sculpt Boot Camp (Nom. Fee) - Senses Spa Fitness Center - 9:00 am
Introduction to Acupuncture - Senses Spa Fitness Center - 10:00 am
Secrets to a Flatter Stomach - Senses Spa Fitness Center - 11:00 am
Back Pain Solutions - Senses Spa Fitness Center - 2:00 pm
Eat More to Weigh Less - Senses Spa Fitness Center - 3:00 pm
Group Cycling - Senses Spa Fitness Center - 4:00 pm
Yoga - Senses Spa Fitness Center - 5:00 pm

TASTING CLASSES

Stem to Stern Wine Tasting (21+) - Keys - 12:15 pm
Whiskey Tasting (21+) - Cove Cafe - 10:30 pm
 Please make reservations for tastings at Guest Services for a nominal fee.
 Tasting Seminars are only for Guests 21 and older.

CLUB 18*21 - LUNCH

Lumiere's, Deck 3, Midship - 12:00 pm
 Get to know your fellow 18*21 Guests over a spot of lunch.

CLUB
18*21

CLUB 18*21 - XBOX® KINECT CHALLENGE

O'Gills Pub, Deck 3, Forward - 5:15 pm
 Take on the challenge in this fun active computer game.

CLUB 18*21 - MIXER

Fathoms, Deck 3, Forward - 10:00 pm
 Come join fellow cruisers your own age at our exclusive Club 18*21 event.

ART OF THE THEME SHOW TOUR

Palo, Deck 10, Aft - 9:00 am & 4:00 pm
 Join us on a guided ship tour and discover the key ingredients that make the Disney Magic.

DISNEY TRIVIA

O'Gills Pub, Deck 3, Forward - 10:30 am
 Navigate your way through a round of questions to test how much you really know about Disney.

ULTIMATE DISNEY TRIVIA

O'Gills Pub, Deck 3, Forward - 3:15 pm
 Think you know all there is to know about Disney? Come test your knowledge at ultimate Disney trivia for the Adults.



FUN FOR ALL AGES HIGHLIGHTS

WAKE UP WITH DISNEY JUNIOR

D Lounge, Deck 4, Midship - 8:30 am
 What happens when you experience unlimited fun with your favorite Disney Junior shows? You get an exciting dance party designed especially for preschoolers ages seven and under.



YOUTH ACTIVITIES OPEN HOUSE:

MICKEY'S PUZZLE PLAYTIME
Disney's Oceaneer Club, Deck 5, Midship - 9:15 am
 Come and play with Mickey & friends as they share their favorite games, puzzles, and dances.



DIAMOND JACKPOT BINGO

Bingo Pre-Sales start at 10:30 am
Promenade Lounge, Deck 3, Aft - 10:45 am
 Join us for 4 cash prize games and your chance to win a diamond pendant! Everyone attending will also receive a voucher to collect a free Diamonds International charm bracelet! Pre-Sales start 15 minutes prior to the game.



DISNEY VACATION CLUB GROUP PREVIEW

D Lounge, Deck 4, Midship - 12:30 pm
 Want to learn more about taking magical vacations year after year? Please see a Disney Vacation Club representative on Deck 4, Midship, or call 7-2805 from your stateroom phone for more information about our interactive group presentation.



MICKEY 200

Fathoms, Deck 3, Forward - 12:45 pm
 Don't eat your vegetables... race them in this wild and wacky charge to the finish line. May the best veggie win! (Limited Availability)



GENERATION GAME

Fathoms, Deck 3, Forward - 2:15 pm
 Join your Cruise Staff team for our kids vs. adults game show featuring a series of challenges and tasks. Who will be the champion in our battle of the generations?

\$5,000 MEGA JACKPOT BINGO

Bingo Pre-Sales start at 3:30 pm
Fathoms, Deck 3, Forward - 3:45 pm
 Don't miss your chance to take home big money! 4 CASH prize games and great raffle prizes to be won! Complete the fourth game in 46 numbers or less and win the \$5,000 Mega Jackpot! Pre-Sales start 15 minutes prior to game.



DISNEY JUNIOR PIRATE & PRINCESS DANCE PARTY

D Lounge, Deck 4, Midship - 4:30 pm
 Calling all Pirates and Princesses! Come join us for a family dance party featuring music and fun activities from Jake & the Neverland Pirates and Sofia the First. Whether you favor tiaras or treasure chests, there's something for you at our Disney Junior Pirate & Princess Dance Party!



MAGIC WORKSHOP (6+)

Fathoms, Deck 3, Forward - 7:30 pm
 Magic Dave teaches you the basics of magic in this fun family event.

GAME SHOW: THE WHEEL

Promenade Lounge, Deck 3, Aft - 9:45 pm
 A special version of this popular TV game show.

SANTA'S WINTER WONDERLAND BALL

Lobby Atrium, Deck 3, Midship - 10:15 pm
 An evening of spectacle and holiday enchantment, join the Cruise Director and our holiday Snowbells as we celebrate the arrival of a very special holiday guest - Santa Claus! Get your cameras ready. You don't want to miss Santa and the World Famous Disney Characters as they create a Winter Wonderland....at sea!



YOUTH ACTIVITIES HIGHLIGHTS

DINE & PLAY

As a convenience for families dining at 8:15 pm, our Youth Activities Counselors will be available at 9:15 pm at the entrance of Lumiere's and Carioca's and at 9:30 pm at the entrance of Animator's Palate to bring registered children to join the fun in Disney's Oceaneer Club and Disney's Oceaneer Lab.



Deck 5, Aft (7-5864)

8:30 am - 11:00 pm

Infants and Toddlers can enjoy toys and activities at It's a small world nursery. Reservations are first come, first served so please stop by!



Deck 5, Midship (7-1439)
(3-12 years old)

9:00 am - 12:00 am

STORY TIME WITH BELLE

3:30 pm

Come to the Oceaneer Club and listen to one of your favorite Disney stories: Beauty & the Beast!

BOYS AND GIRLS CHILL

10:00 pm

Boys you will hang for competition, challenges, and fun. Girls you will chill with music, games, and fun.



Deck 5, Midship (7-1445)
(3-12 years old)

9:00 am - 12:00 am

SUPER SLOPPY SCIENCE

11:00 am

Join Professor Make-O-Mess in some of the most extreme experiments you will ever see in the world of Super Sloppy Science!

GAGA BALL

2:30 pm

Come take part in this great game as you try to outlast your opponents.



Deck 2, Midship (7-5816)
(11-14 years old)

10:00 am - 1:00 am

GOOFY'S WORLD RECORDS

11:15 am

Compete in the Goofy-est games ever! Goofy and his pals have created a variety of games and contests for a wild time.

ICE CREAM SOCIAL

4:00 pm

I scream, you scream, we all scream for ice cream! Make your own frosty treat with your Counselors.



Deck 10, Midship (7- 18517)
(14-17 years old)

10:30 am - 2:00 am

BRING IT!

12:00 pm

How much do you think you know? Test your knowledge in this Music Challenge, where you will be pitted head to head.

ZOMBIFIED

2:00 pm

A big movie producer is looking for zombies to help him film the finale to his latest masterpiece, Zombified.

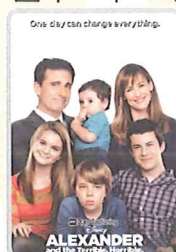
BUENA VISTA THEATRE

Deck 5, Aft
Today's Movies

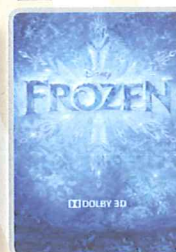
Open Captioning

DOLBY.3D

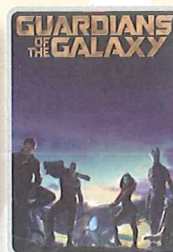
DOLBY.3D



8:30 am
Duration:
1 hr 21 mins
Rating: PG



12:45 pm
Duration:
1 hr 48 mins
Rating: PG



3:00 pm
Duration:
2 hrs 2 mins
Rating: PG-13



5:45 pm & 8:15 pm
Duration:
1 hr 37 mins
Rating: PG



10:30 pm
Duration:
1 hr 21 mins
Rating: PG



FAMILY VARIETY ACT

Featuring the
Comedy & Music
of John Charles,
as he entertains the
entire family in this
fun-filled show.

Walt Disney Theatre,
Deck 4, Forward
1:45 pm



ADULT VARIETY ACT

Featuring the
Comedy & Magic
of David Williamson,
as he entertains you in this
adult exclusive show.

Fathoms (18+),
Deck 3, Forward
10:45 pm

YOUTH ACTIVITIES OPEN HOUSE

Open House is an opportunity for all to come and participate in a variety of exciting activities and free time in the Oceaneer Club, Oceaneer Lab, it's a small world nursery, Vibe and Edge throughout the cruise. During these times secured programming will still be offered in the other venue for those looking to check their children into care.

Edge: 10:00 am - 11:00 am & 6:00 pm - 7:30 pm

Vibe: 7:00 pm - 8:30 pm

Disney's Oceaneer Club: 9:00 am - 10:30 am

Disney's Oceaneer Lab: 7:00 pm - 9:00 pm

MORE TO ENJOY WHILE ONBOARD



MORE MAGIC IN EUROPE

Set sail for Europe! Travel with Disney Cruise Line to the Mediterranean- a region that conjures up a romantic past. Home to some of the world's oldest civilizations, trade routes and cultures, this region offers a diverse blend of cities and cultures. Sail to such countries as Italy, France, Spain and Portugal. Begin your adventure today! Visit the Onboard Sales Desk for more information.



DISNEY VACATION CLUB

Visit the Disney Vacation Club information desk and ask us about show times where you will learn how to turn every vacation into the vacation of a lifetime.



PORT & SHOPPING INFORMATION

Join Maureen, your Port Shopping Guide, at 11:00 am in the Buena Vista Theatre, Deck 5, Aft, for this not to be missed presentation covering the amazing Tax and Duty Free Shopping Ashore opportunities that await you this cruise. Free Charm Bracelet for everyone in attendance! Then join Maureen for her Diamond and Gemstone seminar at 3:30 pm in the Promenade Lounge, Deck 3, Aft, to learn all the tips & secrets to shopping for gems this week in port! Free tanzanite studs for everyone in attendance!



IONITHERMIE

Super Detox Treatments

Lose between 1 - 8 inches, speed up your metabolism, rid off puffiness, smooth your skin and firm your muscle without any pain of hard exercise

1 session for \$155.00, 3 sessions for \$299

Deck 9, Forward - Phone : 7-1465



ATLANTIS GEMS

Atlantis Gems jewelry are onboard this sailing with a wide selection of elegant jewelry designs.

Adorned with rare and colorful gemstones, discover these stylish pieces today.

**WHITE CAPS
DECK 4, FORWARD**



SAY CHEESE

Your family is dressed up and ready to enjoy the evening.

Capture the memories in your formal attire by visiting our professional portraiture studios in the Lobby Atrium, Deck 3 Midship, from 5:15 pm - 6:00 pm and 7:15 pm - 8:30 pm.

Connect@Sea

We are now offering a NEW and improved Internet service to stay connected on your cruise like no other in the industry! Internet packages range from \$0.25 per MB - \$89.00 (1000 MB package). For more information contact your Connect@Sea Expert or Guest Services onboard.

QUARTER MASTERS ARCADE

You can drive a Hummer, be The Fast and The Furious, plus hop on a Crazy Taxi with no license required! All this at Quarter Masters Arcade, located on Deck 9, Midship.

ONBOARD AIRLINE CHECK IN

Stop by the Guest Services Desk, Deck 3, Midship to find out about enrolling in our Onboard Airline Check In Service.



What's your next adventure? Ask your friendly Port Adventures team about options for Cozumel, Grand Cayman, and Falmouth.

Don't forget to plan early for your day at Disney's exclusive island - Castaway Cay. Stop by the Port Adventures Desk on Deck 3, Midship where our friendly team will assist you.

SHOPPING

PRECIOUS DISNEY PLUSHES

Cuddle up with some of your favorite Disney pals when you swing by Mickey's Mainsail and discover a lovable, soft Plush. From Stitch to Mickey and Minnie, you'll be sure to find a new cuddly friend to take home. Deck 4, Forward.

HELPFUL SHOPPING TIP

Don't have time to drop off your souvenirs at your stateroom before dinner or a show? For your convenience, Disney Cruise Line merchandise locations can hold your purchased items for up to 24 hours while you enjoy the other Disney Cruise Line experiences you don't want to miss out on. Mickey's Mainsail and White Caps, Deck 4, Forward.

GUESS THE CARAT WEIGHT

Whoever guesses closest wins a fine jewelry piece from Atlantis Gems! Winner announced 7:30 pm. Must be present to win. White Caps, Deck 4, Forward.

DISNEY CRUISE LINE® DOONEY & BOURKE HANDBAGS

Swing by White Caps and commemorate your cruise with style with the new nautical themed Disney Cruise Line® Dooney & Bourke handbag collection. Deck 4, Forward.

HAIR BRAIDING ONBOARD

Add some flair to your hair when you visit a Disney Cruise Line® hair braiding station! Stop by a station today for more information and to learn all about the available braiding styles. Subject to restrictions and availability. Deck 9, Midship.

THOMAS KINKADE ART AT THE VISTA GALLERY

Thomas Kinkade, also known as "The Painter of Light," is one of Disney's most popular and beloved artists. Visit the Vista Gallery to view some of his original dreamlike interpretations of your favorite Disney characters. Deck 4, Midship.

IMPORTANT INFORMATION

Security Notice

All Guests (including Children) who wish to disembark or embark the ship are required to present their Key to the World card at the gangway. A photo ID is also required for those Guests who are 18 years of age or older. Guests under the age of 18 are required to have a parent, guardian or other responsible adult sign an authorization form at the Guest Service Desk if they wish to go ashore unaccompanied or with any adult from another stateroom.

Sunscreen/Insect Repellent Advisory
Use sunscreen first and protect against mosquito bites and related illnesses by applying insect repellent on top of sunscreen when going ashore. Insect repellent is available for purchase in White Caps.

Cold and Flu Reminder

Please wash hands frequently and thoroughly, particularly before meals. Contact the Health Center by dialing 7-1923, should anyone in your party become ill.

Inclement Weather

For the safety of all Guests, outdoor events may be changed due to unforeseen weather conditions.

Corridor Quiet Hours

As a courtesy to all our Guests, please recognize quiet hallway hours from 10:00 p.m. til 8:00 a.m.

Environmental Message

With Disney's commitment to the Environment please refrain from throwing anything over the Ship's side. Thank you.

No Reserved Seats Policy

As a courtesy to all Guests we kindly advise that the saving of seats is not permitted in the Walt Disney Theatre, and the saving of the sun loungers is not permitted on Deck 9 and 10. Items left unattended will be returned to lost and found at Guest Services, Deck 3, Midship.

Smoking

For the comfort of our guests, the following areas are designated as smoking areas:
• Deck 10 Forward, Starboard Side
• Deck 9, Forward, Starboard Side at Quiet Cove
• Deck 4, Starboard Side from 6:00 p.m. to 6:00 a.m. only (all of Deck 4 is non-smoking from 6:00 a.m. to 6:00 p.m.)
Smoking is prohibited inside all guest staterooms and on stateroom verandahs. Guests found smoking in their staterooms or on their verandahs will be charged a \$250 stateroom recovery fee.

Walt Disney Theatre



Theatrical performances may use artificial fog, strobe lights, pyrotechnics and other special effects. For the safety of our performers and the comfort of those around you, the use of any photography or video recording device or any electronic equipment is prohibited.

Verandah Safety

Please do not leave any combustible materials on your balcony when not present in your stateroom for safety reasons.

Morning	8:30	8:45	9:00	9:15	9:30	9:45	10:00	10:15	10:30	10:45	11:00	11:15	11:30	11:45	12:00	12:15	12:30	12:45	1:00	1:15	1:30	
FUNNEL VISION	Sleeping Beauty (G) Funnel Vision					Cinderella (G) Funnel Vision					Movie Challenge Poolside Deck Stage					Movie As Chosen By You Deck Stage						
BUENA VISTA THEATRE	Alexander....Very Bad Day (PG) Open Captioning Duration: 1 Hour 21 Minutes										Port & Shopping Talk Buena Vista Theatre					Frozen (PG) DOLBY 3D Duration: 1 Hour 48 Minutes						
CHARACTERS	Sofia Dk 4, Mid					Jake Dk 4, Mid					Sofia Dk 4, Mid					Doc McStuffins Dk 4, Mid						
	Captain America Preludes					Jake Dk 4, Mid																
FUN FOR ALL AGES					Become Iron Man!	Bingo Pre-Sales	Diamond Jackpot BINGO Promenade Lounge															
	Animation - Mickey Mouse Promenade Lounge		Animation Goofy Promenade Lounge		Walking Ship Tour Preludes				PG Duration: 1 hr 21 mins Walt Disney Theatre		Holiday Crafts Promenade Lounge											
ADULTS	Friends of Bill W. Keys		Art of The Theme Show Tour Palo					Disney Trivia O'Gills Pub		3D Crafts O'Gills Pub		Club 18*21 - Lunch Lumiere's		Disney Vacation Club Group Preview D Lounge								
	Boot Camp (Nom. Fee) Senses Spa Fitness Center											Singles' Lunch Lumiere's		Movie Quotes Trivia O'Gills Pub								
VIBE 14-17 YEARS OLD						Coffee Break					Bring It!					Holiday Crafts						
EDGE 11-14 YEARS OLD						Youth Activities Open House					Goofy's World Records					Wii Challenge						
OCEANEER LAB 3-12 YEARS OLD	Goofy Files					Super Sloppy Science										Lunch					Sports Deck Fun	
OCEANEER CLUB 3-12 YEARS OLD	Youth Activities Open House					Stitch's Great Adventure																
	Mickey's Puzzle Playtime		Become Iron Man!																			

Afternoon	1:45	2:00	2:15	2:30	2:45	3:00	3:15	3:30	3:45	4:00	4:15	4:30	4:45	5:00	5:15	5:30	5:45	6:00	6:15	6:30	6:45			
FUNNEL VISION						Tangled (PG) Funnel Vision								Enchanted (PG) Funnel Vision										
BUENA VISTA THEATRE						Guardians of the Galaxy (PG-13) DOLBY 3D Duration: 2 Hours 2 Minutes															Maleficent (PG) Duration: 1 Hour 37 Minutes			
CHARACTERS				Stitch Gazebo					Goofy Gazebo					Mickey Preludes					Chip & Dale Preludes					
	Captain America Preludes					Chip & Dale Gazebo								Minnie Preludes										
FUN FOR ALL AGES		Generation Game Fathoms		Disney Tunes Trivia Promenade Lounge				Bingo Pre-Sales		\$5,000 MEGA Jackpot 						Captain's Welcome Reception Lobby Atrium								
		3D Crafts D Lounge						Diamond and Gemstone Seminar Promenade Lounge				Live Music with Rodrigo Figueroa Promenade Lounge												
ADULTS	Animation Mickey Mouse Animator's Palate		Animation Goofy Animator's Palate				Ultimate Disney Trivia O'Gills Pub		Art of The Theme Show Tour Palo		Yoga Senses Spa Fitness Center				Club 18*21 Xbox® Kinect Challenge O'Gills Pub									
	Live Guitar with Bernie Griffith Quiet Cove Pool						Live Guitar with Bernie Griffith Quiet Cove Pool		Singles' Mingle Cove Cafe															
VIBE 14-17 YEARS OLD			Zombified										Ice Cream Social		Sports Deck Fun									
EDGE 11-14 YEARS OLD			Brains and Brawns			Holiday Crafts			Ice Cream Social			Rockband Challenge			Youth Activities Open House									
OCEANEER LAB 3-12 YEARS OLD	Sports Deck Fun				GAGA Ball				Anyone Can Cook					Holiday Crafts					Dinner					
OCEANEER CLUB 3-12 YEARS OLD			Craft Corner						Story Time with Belle					Memory Wall				Heffalump Hunting						

Evening	7:00	7:15	7:30	7:45	8:00	8:15	8:30	8:45	9:00	9:15	9:30	9:45	10:00	10:15	10:30	10:45	11:00	11:15	11:30	11:45	12:00	
FUNNEL VISION	Dumbo (G) Funnel Vision				NFL Football: Steelers vs. Titans Funnel Vision (Subject to Satellite Availability)																	
BUENA VISTA THEATRE						Maleficent (PG) Duration: 1 Hour 37 Minutes							Alexander....Very Bad Day (PG) Duration: 1 Hour 21 Minutes									
CHARACTERS		Donald Dk 4, Mid		Daisy Dk 4, Mid		Goofy Dk 4, Mid																
			Minnie Preludes		Mickey Preludes																	
FUN FOR ALL AGES	Captain's Welcome Reception Lobby Atrium					 Walt Disney Theatre			Game Show: The Wheel Promenade Lounge		 Lobby Atrium		Formal Night After Party D Lounge									
	Magic Workshop (6+) Fathoms																					
	Family Superstar Karaoke D Lounge								Live Music with Rob Sanders Lobby Atrium				Live Music with Duo Azucar Promenade Lounge			Live Music with Duo Azucar Promenade Lounge						
ADULTS	Rodrigo Figueroa LIVE O'Gills Pub		Pub Quiz O'Gills Pub		NFL Football: Steelers vs. Titans O'Gills Pub (Subject to Satellite Availability)							DJ Dan Fathoms		Club 18*21 Fathoms		DJ Dan Fathoms		Variety Show: David Williamson Fathoms		Cruise Staff DJ Fathoms		
			Tribute to Sinatra with Nick Messina Keys							Live Music with Nick Messina Keys							Live Guitar O'Gills Pub					
VIBE 14-17 YEARS OLD	Youth Activities Open House 🍷										Pump It Up			Smoothie Time		Anyone Can Cook						
EDGE 11-14 YEARS OLD	Open House 🍷					Sports Deck Fun				Trivia Challenge							Anyone Can Cook			Chillin' in Edge		
OCEANEER LAB 3-12 YEARS OLD	Youth Activities Open House 🍷								Holiday Crafts				Boys and Girls Chill 🧸									
						Animation Antics 🧸																
OCEANEER CLUB 3-12 YEARS OLD						Magic Show 🧸						Become Iron Man! 🧸				Boys and Girls Chill 🧸						

Symbol for activities that will be repeated during the cruise

Fold along the dotted lines and take me with you so you don't miss any of the fun!

FOLD

IN THE SPOTLIGHT SERIES
SOLVE IT SERIES

JUMP UP SERIES
CREATE & INVENT SERIES

CLUBHOUSE SERIES
STORYBOOK SERIES