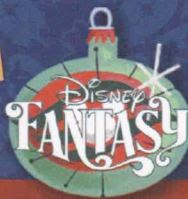


# PERSONAL NAVIGATOR

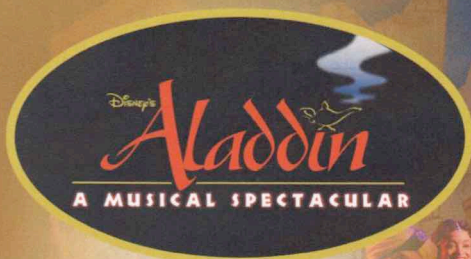


Sunrise: 6:34 am Sunset: 5:07 pm  
Evening Attire: Formal

Today: Partly Sunny High: 78°F/26°C  
Tomorrow: Partly Sunny High: 76°F/24°C

SUNDAY, NOVEMBER 23, 2014

DAY AT SEA



New to Disney Cruise Line.  
"Disney's Aladdin - A Musical Spectacular"

A fast-paced, musical comedy based on the beloved animated film.

Aladdin, the "street rat" of Agrabah, meets a wise-cracking Genie, battles the evil Jafar, and falls in love with the beautiful and spirited Princess Jasmine. Disney storytelling at its best.

## WALT DISNEY THEATRE

Deck 3 & 4 Forward  
6:15 pm & 8:30 pm



As a courtesy to all Guests, we kindly advise that the saving of seats is **not** permitted in the Walt Disney Theatre.



Assistance available at the entrance to the Walt Disney Theatre 30 minutes prior to show time.

## Disney FANTASY Fun Facts

Tonnage: 130,000 Gross Tons

Height: 216 Feet

Length: 1115 Feet

### Important Dates

Name Announcement: March 10, 2009

Steel Cutting: March 16, 2010

Keel Laying: February 11, 2011

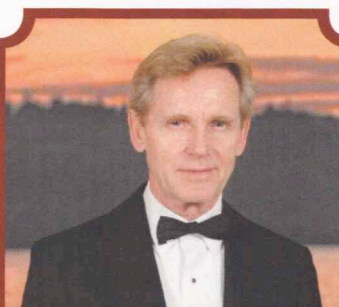
Delivery: February 9, 2012

Almost four football fields in length, the Disney Fantasy is longer than the height of the Eiffel Tower in Paris (1,063 feet). She is also longer than the height of New York City's famous Chrysler building (1,047 feet).

### Disney Fantasy's Whistle

*Will be played after today's noon announcement*

The Disney Fantasy's whistle, a prominent element of the "Sailing Away" deck party at the start of the cruise, is quite the musical talent. It's able to perform not just the first musical line of "When You Wish Upon a Star" but also the second line of the song ("makes no difference who you are") plus several measures of "Yo Ho (A Pirate's Life for Me)," "It's a Small World," "Be Our Guest," "Hi Diddle Dee Dee (An Actor's Life for Me)" and "A Dream is a Wish."



### CAPTAIN'S RECEPTION

Enjoy live music and a cocktail while meeting some of the ship's officers.

Lobby Atrium, Deck 3, Midship,

5:00 & 7:30 pm

Enjoy an exclusive photo opportunity with Commodore Tom at

5:15 & 7:30 pm, Lobby Atrium

## Don't Miss:

### Walking Ship Tour

Preludes, Deck 3, Forward - 9:15 am & 11:30 am

Enjoy the beauty of the Disney Fantasy with your Cruise Staff in this guided tour.

### Anyone Can Cook - Apple Strudel

D Lounge, Deck 4, Midship - 2:15 pm

From our galley to yours. Join our chefs as they show you how to prepare delicious dishes. Today's Menu - Apple Strudel

### Chip-It Golf (12+)

Lobby Atrium, Deck 3, Midship - 3:00 pm

It's par for the course for our Guests 12 and older to compete on our special "greens" in this fun tournament.

### Adult Variety: Mike Super (18+)

Walt Disney Theatre, Deck 3 & 4, Forward - 11:00 pm

Featuring the Magic and Illusion of Mike Super, as he entertains you in this adult exclusive show.



## TIME ZONE CHANGE

Remember to turn your clocks

**FORWARD 1 HOUR** upon retiring on **SUNDAY** evening, or first thing **MONDAY** morning.

## DINNER MENU

Animator's Palate : Pacific Rim Cuisine  
Enchanted Garden : Continental Market Cuisine  
Royal Court : French Cuisine

## DRINK OF THE DAY

Coco Bali (Non Alcoholic)  
Paradise Punch (Alcoholic)

### IMPORTANT NUMBERS

Fire/Security: 7-3001  
Medical Emergency: 7-3000  
Health Center: 7-1923



# ADULT ACTIVITY HIGHLIGHTS

## SENSES SPA FITNESS CLASSES & SEMINARS

*Yoga* - Donald's Pool - 7:00 am  
*Complimentary Footprint Analysis* - Senses Spa & Salon - 8:00 am & 5:00 pm  
*Hair Seminar* - Senses Spa & Salon - 9:00 am  
*Body Sculpt Boot Camp* (Nom. Fee) - Senses Fitness Center - 9:00 am  
*Introduction to Acupuncture* - Senses Spa & Salon - 11:15 am  
*Burn Fat Faster* - Senses Spa & Salon - 12:00 pm  
*Detox for Health & Weight Loss* - Senses Spa & Salon - 2:00 pm  
*Group Cycling* - Senses Fitness Center - 4:00 pm  
*Fitness Frenzy* (13-17, Nom. Fee) - Senses Fitness Center - 7:00 pm



## TASTING CLASSES

*Champagne Tasting* (21+) - Ooh La La - 12:15 pm  
*Martini Tasting* (21+) - Meridian - 1:00 pm  
*Stem to Stern Wine Tasting* (21+) - Ooh La La - 1:45 pm  
*Mixology* (21+) - Meridian - 3:00 pm; Skyline - 4:00 pm  
*Italian Cocktail Tasting* (21+) - The Tube - 4:30 pm  
*Tequila & Margarita Tasting* (21+) - Ooh La La - 4:30 pm  
*Cognac Tasting* (21+) - Cove Cafe - 10:00 pm  
*Whiskey Tasting* (21+) - Meridian - 10:30 pm  
 Please make reservations for tastings at Guest Services for a nominal fee.  
 Tasting Seminars are only for Guests 21 and older.

## CLUB 18\*21 - LUNCH

*Royal Court, Deck 3, Midship - 12:15 pm*  
 Get to know your fellow 18\*21 Guests over a spot of lunch.

## CLUB 18\*21 - MINI GOLF

*Goofy Golf, Deck 13, Aft - 3:45 pm*  
 Can you get a hole in one? Give it a try with some mini golf.

## CLUB 18\*21 - MIXER

*The Tube, Deck 4, Aft - 9:45 pm*  
 Come join fellow cruisers your own age at our exclusive Club 18\*21 event.



## ESPN DREAM TEAM DRAFT DAY - FOOTBALL

*O'Gills Pub, Deck 4, Aft - 11:30 am*  
 Join the "Commissioner" and engage in this interactive fantasy football draft unlike anything you've ever seen!  
 Can YOU draft the greatest football team of all-time?

## THE QUEST

*The Tube, Deck 4, Aft - 10:15 pm*  
 Enjoy the wildest and wackiest scavenger team event on the seven seas!



# FUN FOR ALL AGES HIGHLIGHTS

## WAKE UP WITH DISNEY JUNIOR

*D Lounge, Deck 4, Midship - 8:30 am*  
 What happens when you experience unlimited fun with your favorite Disney Junior shows? You get an exciting dance party designed especially for preschoolers ages seven and under.



## DISNEY ANIMATION: CREATING A CHARACTER

*D Lounge, Deck 4, Midship - 9:45 am & 12:45 pm*  
 Go behind the scenes at Walt Disney Animation Studios as Walt Disney himself talks about his most famous characters, then learn the basic techniques of drawing Mickey and Donald in this fun and interesting enrichment program.



## DIAMOND JACKPOT BINGO

*Bingo Pre-Sales start at 10:45 am*  
*D Lounge, Deck 4, Midship - 11:00 am*  
 Join us for 4 cash prize games and your chance to win a diamond pendant! Everyone attending will also receive a voucher to collect a free Diamonds International charm bracelet! Pre-Sales start 15 minutes prior to the game.



## JACK-JACK'S INCREDIBLE DIAPER DASH

*Lobby Atrium, Deck 3, Midship - 12:15 pm*  
 Calling all baby cruisers! It's time to take to the mat to see who's the fastest crawler of the seven seas! Register your baby 15 minutes prior to the big race.



## MICKEY 200

*The Tube, Deck 4, Aft - 1:45 pm*  
 Don't eat your vegetables... race them in this wild and wacky charge to the finish line. May the best veggie win! (Limited Availability)



## PORT & SHOPPING TALK

*Buena Vista Theatre, Deck 4 & 5, Forward - 1:45 pm*  
 Join your Port and Shopping Guides to learn about the incredible tax & duty free shopping ashore this cruise! Free charm bracelet for all in attendance and a raffle to win a diamond pendant!

## DISNEY CRUISE LINE GIFT PACK JACKPOT BINGO

*Bingo Pre-Sales start at 3:45 pm*  
*D Lounge, Deck 4, Midship - 4:00 pm*  
 Four CASH prize games and four Disney Cruise Line gift packs to be won. The jackpot continues to grow and could go at any time! Pre-Sales start 15 minutes prior to the game.



## PLAYHOUSE D LOUNGE

*D Lounge, Deck 4, Midship - 5:15 pm*  
 Calling our youngest of cruisers! Here is a special playtime that is just for you. Come meet new friends; and join in on the fun as your Cruise Staff team takes you through interactive activities made just for you!

## FAMILY SUPERSTAR KARAOKE

*D Lounge, Deck 4, Midship - 8:30 pm & 10:30 pm*  
 Join your Cruise Staff in D Lounge tonight and sing along to your favorite song - fun for everyone.



# YOUTH ACTIVITIES HIGHLIGHTS

## DINE & PLAY

A convenience for families dining at 8:15 pm, our Youth Activities counselors will be available at 9:15 pm at the entrance of Royal Court, Enchanted Garden and Animator's Palate dining rooms to bring registered children to join the fun in the Youth Activity areas.



Deck 5, Midship (7-5864) 9:00 am - 11:00 pm

## OPEN HOUSE

8:00 am - 9:00 am

Your chance to see our toddler space, it's a small world nursery.



Deck 5, Midship (7-1440) 9:00 am - 12:00 am  
(3-12 years old)

## ALOHA LUAU

10:30 am

It's party time, Hawaiian style! Come join us for a Luau experience and learn how to dance like Lilo & Stitch.

## TINKER BELL'S TALENT SHOW

2:00 pm

Tinker Bell has come from Pixie Hollow to Disney Cruise Line to help young cruisers discover their fairy talents.



Deck 5, Midship (7-1445) 9:00 am - 12:00 am  
(3-12 years old)

## SUPER SLOPPY SCIENCE

10:30 am

Join Professor Make-O-Mess in some of the most extreme experiments you will ever see in the world of Super Sloppy Science!

## ANYONE CAN COOK

2:00 pm

Anyone can cook as we work together to create some of our favorite treats. On today's menu - cookies!



Deck 13, Midship (7-9743) 9:00 am - 1:00 am  
(11-14 years old)

## BRAINS AND BRAWNS

12:00 pm

You will compete against each other to solve clues, take part in physical challenges, and reach the finish first.

## THAT'S HILARIOUS

9:30 pm

Ever wanted to show off your comedy skills? Then be a part of the cast for the crazy improv show "That's Hilarious" and put on a live show for your friends.



Entrance on Deck 4, Forward (7-9418) 9:00 am - 2:00 am  
(14-17 years old)

## DISNEY ANIMATION: CREATING A CHARACTER

10:45 am

Go behind the scenes at Walt Disney Animation Studios as Walt Disney himself talks about his most famous characters, then learn the basic techniques of drawing Mickey and Donald in this fun and interesting enrichment program.

## DIVE INTO DJ'ING

3:30 pm

Hop on the turn tables and learn to scratch with our Club DJ.

# BUENA VISTA THEATRE

Deck 4 & 5, Midship  
Today's Movies

Open Captioning



8:30 am  
Duration:  
1 hr 23 mins  
Rating: PG

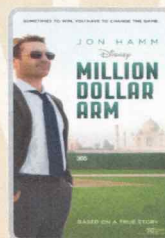


10:15 am  
Duration:  
2 hrs 2 mins  
Rating: PG



3:30 pm  
Duration:  
1 hr 21 mins  
Rating: PG

DOLBY 3D



5:15 pm & 8:15 pm  
Duration: 2 hrs 4 mins  
Rating: PG



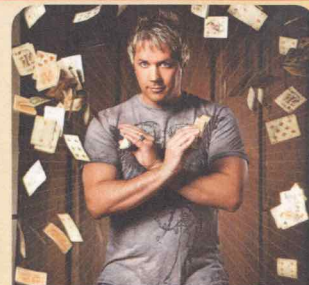
10:45 pm  
Duration: 2 hrs 2 mins  
Rating: PG-13



## FAMILY VARIETY ACT

Featuring the  
Comedy & Hypnosis  
of Dale K,  
as he entertains the  
entire family in this  
fun-filled show.

*The Tube,  
Deck 4, Aft,  
7:30 pm*



## ADULT VARIETY ACT

Featuring the  
Magic and Illusion  
of Mike Super,  
as he entertains you in this  
adult exclusive show.

*Walt Disney Theatre (18+),  
Deck 3 & 4, Forward,  
11:00 pm  
(Doors open 15 minutes prior to show time)*

## YOUTH ACTIVITIES OPEN HOUSE

Open House is an opportunity for all to come and participate in a variety of exciting activities and free time in the Oceaneer Club, Oceaneer Lab, it's a small world nursery, Vibe and Edge throughout the cruise. During these times secured programming will still be offered in the other venue for those looking to check their children into care.

Disney's Oceaneer Club: 9:00 am - 10:00 am  
Disney's Oceaneer Lab: 7:15 pm - 8:30 pm  
Edge: 9:00 am - 10:00 am & 5:30 pm - 7:00 pm  
Vibe: 9:00 am - 10:30 am & 6:30 pm - 8:30 pm



# MORE TO ENJOY WHILE ONBOARD

## EASTERN, WESTERN & SOUTHERN CARIBBEAN

Disney Cruise Line offers a variety of 7-night sailings to exotic ports in the Eastern or Western Caribbean—including our new Eastern Caribbean port Tortola, in the British Virgin Islands. Or visit beautiful Martinique on our four limited-time Southern Caribbean sailings aboard the Disney Wonder—back by popular demand! Visit the Onboard Sales Desk for more information. Remember to ask about our special onboard booking offer!

## DISNEY VACATION CLUB® MEMBERS CELEBRATION

Members! Mix and mingle with other Members and learn how you can enhance your Membership! Please see a Disney Vacation Club representative on Deck 4, Midship, or call 7-2805 from your stateroom phone for more information.

## PORT AND SHOPPING INFORMATION

Join your Port Shopping Guides Mark & Candice to learn about the incredible tax & duty free shopping ashore this cruise! Everything will be covered from diamonds to T-shirts, watches to rum-cake. FREE Caribbean charm bracelet, port maps, and coupons for all who attend! Over \$1,000 in prizes & giveaways! Buena Vista Theatre, Deck 4, Midship 1:45 pm.

## Connect@Sea

We are now offering a NEW and improved Internet service to stay connected on your cruise like no other in the industry! Internet packages range from \$0.25 per MB - \$89.00 (1000 MB package). For more information contact your Connect@Sea Expert or Guest Services onboard.

## ONBOARD AIRLINE CHECK IN

Stop by the Guest Services Desk, Deck 3, Midship to find out about enrolling in our Onboard Airline Check In Service.

## RUNDISNEY: CASTAWAY CAY 5K REGISTRATION (10+)

Sign up today for the runDisney: Castaway Cay 5K! Please visit the Port Adventures Desk or the Guest Services Desk to register at anytime prior to our arrival at Disney's Castaway Cay. Please note that runners must be 10 years of age or older to participate.

## MIDSHIP DETECTIVE AGENCY

The puppies from 101 Dalmatians have gone missing! Use your special detective "badge" to track down the puppies and catch the villain who took them. Decks 2 & 5, Midship.



**SENSES**  
SPA & SALON

## SPA SPECIAL

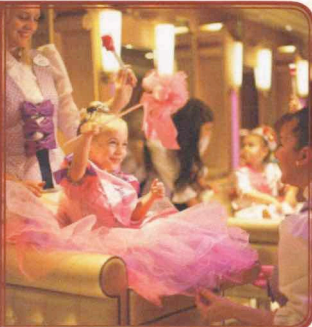
### IONITHERMY

Would you like to lose between 1 – 8 inches?  
Speed up your metabolism?  
Firm your muscle tone?  
Improve appearance of cellulite?  
If so, then Ionithermy is the best treatment for you!  
50 min. \$155

## BIBBIDI BOBBIDI BOUTIQUE

Deck 5, Midship

Becoming the princess of your dreams, creates memories for a lifetime. Where Fairy Godmothers in training are ready with Pixie Dust and Magic! Make your reservations for princess makeovers and the Pirate League today.  
Limited space available.  
Visit Bibbidi Bobbidi Boutique or call ext. 7-9438 to make a reservation.



## Shutters

## FORMAL PORTRAITS TONIGHT!

Now that the family is dressed up and ready to enjoy the evening, capture the memories in your formal attire by visiting our professional portrait studios located in the Lobby Atrium, Deck 3, Midship.

5:00 pm - 6:00 pm  
7:15 pm - 8:30 pm  
9:30 pm - 10:30 pm

*\*Please note that photos are available for viewing on our interactive photo kiosks approximately five hours after being taken and are only available for purchase during this cruise.*

## PORT ADVENTURES

Port Adventures provide you and your family with the very best recreation, leisure and sightseeing in St. Maarten, San Juan and Disney's Castaway Cay. Whether sailing into the horizon on the Golden Eagle Catamaran or flying high on a parasailing adventure or just kicking back and relaxing on an Island tour, whatever it is you choose to do, there is adventure waiting for you in each port.  
Visit our friendly Port Adventures Team located Deck 5, Midship, for reservations and questions about these and many other offerings.

## SHOPPING

### BIBBIDI BOBBIDI BOUTIQUE

Young princesses and princes can get ready for a formal evening with a makeover at the Bibbidi Bobbidi Boutique. Make your reservations by visiting Bibbidi Bobbidi Boutique, Deck 5, Midship or dialing extension 7-9438. Limited space available.

### SOPHIA FIORI GUESS THE CARAT WEIGHT

Whoever guesses closest wins a Sophia Fiori fine jewelry piece! 9:30 a.m. - 7:15 p.m., Winners Announced tonight at 7:30 p.m. Must be present to win. White Caps, Deck 3, Forward.

### HOLIDAY ONBOARD SHOPPING

Visit the onboard merchandise stores where you'll find a wide selection items for everyone on your holiday shopping list. Surprise young princesses and princes with the fun items you'll find in Mickey's Mainsail such as Princess dresses, plush toys and trading pins. For the fashionable adult on your list, head over to Sea Treasures for trendy fleece sweaters and other stylish Disney Cruise Line brand name apparel. Then visit White Caps for brand name fragrances, timepieces, sunglasses, and handbags that anyone would love to unwrap. Remember, while shopping onboard, you may collect your items from all three stores before proceeding to checkout at any register without having to wait in line in each store to pay for your items separately! Deck 3, Forward.

### HIDDEN CHARACTERS IN THOMAS KINKADE ART!

Known as the "Painter of Light," Thomas Kinkade is one of Disney's most celebrated artists having created an array of enchanting artwork. Stop by the Vista Gallery today to view his unique collection of paintings featuring some of your favorite Disney characters! Also, take the time to try and find all of the hidden Disney characters scattered throughout his paintings. Are you up to the challenge? Deck 4, Midship.

### CELEBRATE THE HOLIDAYS IN STYLE ONBOARD DISNEY CRUISE LINE

Celebrate the holidays in style with fashionable brand name accessories such as Dooney & Bourke handbags, Shinola watches and Gucci sunglasses, all available in White Caps. Deck 3, Forward.

DISNEY 11-23-2014 ©DISNEY

## IMPORTANT INFORMATION

### Security Notice

All Guests (including children) who wish to disembark the ship are required to present their Key to the World card at the gangway. A photo ID is also required for those Guests who are 18 years of age or older. Guests under the age of 18 are required to have a parent, guardian or other responsible adult sign an authorization form at the Guest Service desk if they wish to go ashore unaccompanied or with any adult from another stateroom.

**Sunscreen/Insect Repellent Advisory**  
Use sunscreen first and protect against mosquito bites and related illnesses by applying insect repellent on top of sunscreen when going ashore. Insect repellent is available for purchase in White Caps.

### Cold and Flu Reminder

Please wash hands frequently and thoroughly, particularly before meals. Contact the Health Center by dialing 7-1923, should anyone in your party become ill.

### Corridor Quiet Hours

As a courtesy to all our Guests, please recognize quiet hallway hours from 10:00 pm til 8:00 am

### Inclement Weather

For the safety of all Guests, outdoor events may be changed due to unforeseen weather conditions.

### Environmental Message

With Disney's commitment to the Environment, please refrain from throwing anything over the Ship's side. Thank you!

### No Reserved Seats Policy

As a courtesy to all our Guests, we kindly advise that the saving of seats is not permitted in the Walt Disney Theatre, and the saving of the sun loungers is not permitted on Deck 11, 12, and 13. Items left unattended will be returned to lost and found at Guest Services, Deck 3 Midship.

### Smoking

For the comfort of our Guests, the following areas are designated as smoking areas:

\*Deck 13, forward, port side by Currents

\*Deck 12, aft, port side outdoor area that is accessible through the Meridian Lounge

\*Deck 4, aft, port side from 6:00 pm to

6:00 am only (all of Deck 4 is non-smoking

from 6:00 am to 6:00 pm)

Smoking is prohibited inside all Guest staterooms and on stateroom verandahs. Guests found smoking in their staterooms or on their verandahs will be charged a \$250 stateroom recovery fee. Electronic cigarettes may only be used in designated smoking areas.



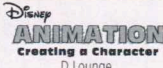




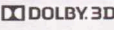


### Walt Disney Theatre

Theatrical performances may use artificial fog, strobe lights, pyrotechnics and other special effects. For the safety of our performers and the comfort of those around you, the use of any photography, video recording device or any electronic equipment is prohibited.

### Verandah Safety

Please do not leave any combustible materials on your balcony when not present in your stateroom for safety reasons.



Morning	8:30	8:45	9:00	9:15	9:30	9:45	10:00	10:15	10:30	10:45	11:00	11:15	11:30	11:45	12:00	12:15	12:30	12:45	1:00	1:15	1:30																			
FUNNEL VISION	A Goofy Movie (G) Funnel Vision					Alice in Wonderland (G) Funnel Vision					Movie Challenge Poolside Funnel Vision																													
BUENA VISTA THEATRE	Planes: Fire and Rescue (PG) Duration: 1 Hour 23 Minutes					The Hundred-Foot Journey (PG) Duration: 2 Hours 2 Minutes																																		
CHARACTERS	 D Lounge					Doc McStuffins Lobby Atrium (V)					Sofia Lobby Atrium (V)					 Character Dance Party Lobby Atrium																								
FUN FOR ALL AGES	Open House - Toddler Time it's a small world nursery Starts at 8:00 am					Walking Ship Tour Preludes					 Creating a character D Lounge					Bingo Pre-Sales					Diamond Jackpot BINGO D Lounge					Family Thanksgiving Crafts La Piazza					 Creating a character D Lounge									
ADULTS	Friends of Bill W. Outlook					Hair Seminar Senses Spa & Salon					Art of The Theme Show Tour Meridian					ESPN Dream Team Draft Day - Football O'Gills Pub					Champagne Tasting (21+) Ooh La La					Singles' Lunch Royal Court														
						Xbox Kinect - Sports Challenge O'Gills Pub					50's & 60's Music Trivia O'Gills Pub					Introduction to Acupuncture Senses Spa & Salon					Club 18*21 - Lunch Royal Court					NFL Football O'Gills Pub (Subject to satellite availability)														
VIBE 14-17 YEARS OLD						Youth Activities Open House					Coffee Break										Sun Deck Fun					Zombified														
EDGE 11-14 YEARS OLD						Youth Activities Open House					4 Square Competition					Bingo										Brains and Brawns					Disney Animation: Creating a Character									
OCEANEER LAB 3-12 YEARS OLD											Craft Corner					Human Bingo					GAGA Ball										Game Challenge									
						Stitch's Adventure Squad										Super Sloppy Science																								
OCEANEER CLUB 3-12 YEARS OLD						Youth Activities Open House & Registration										Aloha Luau					Magic PlayFloor					Lunch					Cruisin' with Crush									
						Mickey's Puzzle Playtime					Memory Wall										Craft Corner										Play-Doh Fun									
Afternoon	1:45	2:00	2:15	2:30	2:45	3:00	3:15	3:30	3:45	4:00	4:15	4:30	4:45	5:00	5:15	5:30	5:45	6:00	6:15	6:30	6:45																			
FUNNEL VISION						The Muppet Christmas Carol (G) Funnel Vision					Ratatouille (G) Funnel Vision																													
BUENA VISTA THEATRE	Port & Shopping Talk Buena Vista Theatre					Alexander...Very Bad Day (PG) Duration: 1 Hour 21 Minutes					Million Dollar Arm (PG) Duration: 2 Hours 4 Minutes																													
CHARACTERS	Genie Dk 4, Balcony					Aladdin Dk 4, Balcony					Genie Dk 4, Balcony					Donald Preludes					Pluto Preludes					Minnie Preludes					Chip & Dale Dk 4, Balcony									
	Buzz Lobby Atrium (V)					Woody Lobby Atrium (V)					Buzz Lobby Atrium (V)					Goofy Lobby Atrium (V)					Woody Lobby Atrium (V)					Minnie Preludes					Daisy Dk 4, Balcony									
FUN FOR ALL AGES	Port & Shopping Talk Buena Vista Theatre					 ANYONE CAN COOK D Lounge - Apple Strudel					 Lobby Atrium (12+)					Bingo Pre-Sales					Disney Cruise Line Gift Pack Jackpot BINGO D Lounge					Captain's Welcome Reception Lobby Atrium										 A MUSICAL SPECTACULAR Walt Disney Theatre				
	Mickey 200 The Tube (Limited Availability)					Disney Tunes Trivia The Tube										Mini Golf Tournament Goofy Golf					Live Music with Fine Whines Lobby Atrium																			
ADULTS	Live Guitar With David Kenny Deck 12, Forward					Live Guitar With David Kenny Deck 12, Forward					Club 18*21 - Mini Golf Goofy Golf					Italian Cocktail Tasting (21+) The Tube					Complimentary Footprint Analysis Senses Spa & Salon																			
	NFL Football O'Gills Pub (Subject to satellite availability)					Mixology (21+) Meridian										NFL Football O'Gills Pub (Subject to satellite availability)																								
VIBE 14-17 YEARS OLD	Zombified										Dive into DJ'ing										Sports Deck Fun										Open House									
EDGE 11-14 YEARS OLD	Wii Challenge					Pictionary					Flubber					Sports Deck Fun					Pathfinders					Craft Corner					Youth Activities Open House									
OCEANEER LAB 3-12 YEARS OLD						Anyone Can Cook										Game Challenge															Craft Corner									
																Wacky Relays					Get the Hook										Dinner									
OCEANEER CLUB 3-12 YEARS OLD						Tinker Bell's Talent Show										Storytime in Pixie Hollow															Color Yourself Heroic									
						Relay Games					Toy Story Boot Camp					Picture This					Memory Wall										Magic PlayFloor					Wii Challenge				
Evening	7:00	7:15	7:30	7:45	8:00	8:15	8:30	8:45	9:00	9:15	9:30	9:45	10:00	10:15	10:30	10:45	11:00	11:15	11:30	11:45	12:00																			
FUNNEL VISION	Pixar Shorts (G) Funnel Vision					Sunday Night Football: Dallas Cowboys vs. New York Giants Funnel Vision (Subject to satellite availability)																																		
BUENA VISTA THEATRE						Million Dollar Arm (PG) Duration: 2 Hours 4 Minutes					Guardians of the Galaxy (PG-13) Duration: 2 Hours 2 Minutes																													
CHARACTERS	Minnie Dk 4, Balcony					Daisy Preludes					Mickey Dk 4, Balcony					Minnie Dk 4, Balcony																								
						Goofy Preludes										Minnie Preludes					Donald Preludes																			
FUN FOR ALL AGES	Family Dance Party The Tube					Captain's Welcome Reception Lobby Atrium					 A MUSICAL SPECTACULAR Walt Disney Theatre					Club D Dance Party D Lounge					 D Lounge																			
						Variety Show: Dale K The Tube																																		
						Club D Dance Party D Lounge					Family Superstar Karaoke D Lounge					Live Music with Fine Whines Lobby Atrium					Live Piano with Tim Moss Lobby Atrium																			
ADULTS											Sunday Night Football: Cowboys vs. Giants O'Gills Pub (Subject to satellite availability)					Club 18*21 - Mixer The Tube					The Quest The Tube					The Magic & Illusion of MIKE SUPER Walt Disney Theatre					70's Remix with Club DJ Day-na The Tube									
VIBE 14-17 YEARS OLD	Youth Activities Open House										Game Challenge										That's Hilarious					Gender Wars					Mirror, Mirror									
EDGE 11-14 YEARS OLD	Tween Choice					Four Square					Wii Challenge					That's Hilarious					Gender Wars					Game Challenge					Mirror, Mirror									
OCEANEER LAB 3-12 YEARS OLD						Youth Activities Open House					Disney Cruise Line Trivia										Dance Party																			
						Anyone Can Cook: Sugar Cookie Decorating										Detective School										Magic PlayFloor														
OCEANEER CLUB 3-12 YEARS OLD						Once Upon a Time					Scavenger Hunt										Pluto's Pajama Party										Magic PlayFloor					Play-Doh Fun				
	Dance Party					Face Paint Time															Bingo										Parachute Games									

Symbol for activities that will be repeated during the cruise



Youth Activities Open House



FOLD

Fold along the dotted lines and take me with you so you don't miss any of the fun!

FOLD

IN THE SPOTLIGHT SERIES  
SOLVE IT! SERIES

JUMP UP! SERIES  
CREATE & INVENT SERIES

CLUBHOUSE SERIES  
STORYBOOK SERIES



SUNDAY, NOVEMBER 23, 2014 - DAY AT SEA

# BUENA VISTA THEATRE

Deck 4 & 5, Midship

cc Open Captioning

DOLBY 3D



8:30 am  
Duration:  
1 hr 23 mins  
Rating: PG



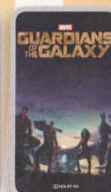
10:15 am  
Duration:  
2 hrs 2 mins  
Rating: PG



3:30 pm  
Duration:  
1 hr 21 mins  
Rating: PG



5:15 pm &  
8:15 pm  
Duration:  
2 hrs 4 mins  
Rating: PG



10:45 pm  
Duration:  
2 hrs 2 mins  
Rating: PG-13

## Character Appearances

### DOC MCSTUFFINS

Lobby Atrium (V)  
9:30 am & 11:00 am

### PRINCESS SOFIA

Lobby Atrium (V)  
10:30 am & 11:30 am

### CHARACTER DANCE PARTY

Lobby Atrium - 1:00 pm

### BUZZ LIGHTYEAR

Lobby Atrium (V)  
1:45 pm & 2:45 pm

### GENIE

Deck 4, Balcony  
2:00 pm & 3:00 pm

### WOODY

Lobby Atrium (V)  
2:15 pm & 3:15 p

### ALADDIN

Deck 4, Balcony - 2:30 pm

### GOOFY

Goofy's Sports Deck - 3:00 pm  
Preludes - 8:00 pm

### MINNIE MOUSE

Preludes - 4:15 pm,  
5:45 pm & 9:30 pm  
Deck 4, Balcony - 5:00 pm,  
7:15 pm & 10:15 pm

### DAISY DUCK

Deck 4, Balcony - 4:30 pm  
Preludes - 7:30 pm

### DONALD DUCK

Preludes  
4:45 pm & 10:00 pm

### PLUTO

Preludes - 5:15 pm

### MICKEY MOUSE

Deck 4, Balcony - 5:30 pm,  
7:45 pm & 9:45 pm

### CHIP & DALE

Deck 4, Balcony - 6:00 pm



(H) Hallway - (S) Starboard Side - (P) Port Side - (V) Vestibule

For details of daily Disney character appearances, refer to the character line on your Navigator Grid, or the digital character board in the Lobby Atrium.

## IMPORTANT NUMBERS

Fire/Security: 7-3001

Medical Emergency: 7-3000

Health Center: 7-1923

## YOUTH ACTIVITIES THEMED EXPERIENCES

**CLUBHOUSE SERIES**  
focuses on movement and features content which appeals to younger children.

**JUMP UP! SERIES**  
includes large group games & movement-oriented activities.

**WIN THE SPOTLIGHT SERIES**  
focuses on children's stage presence with lots of activities and enthusiasm.

**STORYBOOK SERIES**  
is designed with a strong connection to the Disney classic stories.

**CREATE & INVENT SERIES**  
will have a tactile focus allowing children to create and admire their work.

**SOLVE IT! SERIES**  
are less active, but will challenge children with problem/solutions-based activities.

### YOUTH ACTIVITIES OPEN HOUSE

A non-secured program with activities for families, adults and children of all ages to enjoy together.

## SHIP DIRECTORY

### YOUTH ACTIVITIES

DISNEY'S OCEANEER CLUB	DECK 5, MID	9:00 AM - 12:00 PM
DISNEY'S OCEANEER LAB	DECK 5, MID	9:00 AM - 12:00 PM
EDGE	DECK 13, MID	9:00 AM - 1:00 AM
VIBE	DECK 4, FWD	9:00 AM - 2:00 PM
IT'S A SMALL WORLD NURSERY	DECK 5, MID	9:00 AM - 11:00 PM

### POOLS & MORE

\* Children under 12 must have adult supervision in pool areas.

AQUADUCK	DECK 12, MID	9:00 AM - 11:00 PM
AQUALAB	DECK 12, AFT	10:00 AM - 6:00 PM
DONALD'S POOL	DECK 11, MID	9:00 AM - 6:00 PM 8:00 PM - 10:00 PM
MICKEY'S POOL	DECK 11, MID	8:30 AM - 10:30 PM
MICKEY'S SLIDE	DECK 11, MID	9:00 AM - 6:00 PM
NEMO'S REEF	DECK 11, MID	9:00 AM - 6:00 PM
QUIET COVE POOL (18+)	DECK 11, FWD	8:00 AM - 10:00 PM
SATELLITE FALLS	DECK 13, FWD	6:00 AM - 8:00 PM

### RECREATION

GOLF/SPORTS SIMULATORS	DECK 13, AFT	9:00 AM - 6:00 PM
GOOFY GOLF	DECK 13, AFT	8:00 AM - 10:00 PM
GOOFY'S SPORTS DECK	DECK 13, AFT	8:00 AM - 6:00 PM
MIDSHIP DETECTIVE AGENCY	DECKS 2 & 5, MID	9:00 AM - 10:00 PM
PORT ADVENTURES DESK	DECK 5, MID	9:00 AM - 5:00 PM 7:00 PM - 8:30 PM
SENSES FITNESS CENTER (18+)	DECK 11, FWD	6:30 AM - 10:00 PM

### GENERAL INFORMATION

ARR-CADE	DECK 11, AFT	24 HOURS
DISNEY VACATION CLUB	DECK 4, MID	9:00 AM - 11:00 AM 2:30 PM - 10:00 PM
GUEST SERVICES	DECK 3, MID	24 HOURS
MEDICAL HEALTH CENTER	DECK 1, FWD	9:30 AM - 11:00 AM 4:30 PM - 7:00 PM
ONBOARD SALES DESK	DECK 4, MID	10:00 AM - 12:00 PM 2:00 PM - 6:00 PM 7:30 PM - 8:30 PM
PORT & SHOPPING DESK	DECK 4, MID	7:30 PM - 8:30 PM
PRELUDES	DECK 3, FWD	2:30 PM - 3:15 PM 5:45 PM - 6:30 PM 8:00 PM - 8:45 PM
SENSES SPA AND SALON	DECK 11, FWD	8:00 AM - 10:00 PM
SHUTTERS PHOTO GALLERY	DECK 4, MID	9:30 AM - 12:00 PM 7:00 PM - 11:00 PM
SHUTTERS DIGITAL	DECK 4, MID	24 HOURS

### SHOPPING

BIBBIDI BOBBIDI BOUTIQUE	DECK 5, MID	9:00 AM - 9:00 PM
MICKEY'S MAINSAIL	DECK 3, FWD	9:30 AM - 11:00 PM
QUACKS	DECK 11, MID	10:00 AM - 4:00 PM
SEA TREASURES	DECK 3, FWD	9:30 AM - 11:00 PM
VISTA GALLERY	DECK 4, MID	10:00 AM - 10:00 PM
WHITE CAPS	DECK 3, FWD	9:30 AM - 11:00 PM
WHOZITS & WHATZITS	DECK 11, MID	10:00 AM - 4:00 PM

## DINNER MENU

Animator's Palate : Pacific Rim Cuisine  
Enchanted Garden : Continental Market Cuisine  
Royal Court : French Cuisine  
Dining Times: 5:45pm & 8:15pm

## DRINK OF THE DAY

Coco Bali  
(Non Alcoholic)  
Paradise Punch  
(Alcoholic)

## WEATHER FORECAST

Today: Partly Sunny  
High: 78°F/26°C  
Tomorrow: Partly Sunny  
High: 76°F/24°C

Evening Attire: Formal

## DINING & LOUNGES

### BREAKFAST

CABANAS CONTINENTAL	DECK 11, AFT	7:00 AM - 7:30 AM
CABANAS	DECK 11, AFT	7:30 AM - 11:30 AM
ENCHANTED GARDEN	DECK 2, MID	8:30 AM - 10:45 AM
ROYAL COURT	DECK 3, MID	8:00 AM - 9:30 AM

### LUNCH

CABANAS	DECK 11, AFT	11:30 AM - 2:00 PM
FILMORE'S FAVORITES	DECK 11, MID	11:00 AM - 6:30 PM
LUIGI'S PIZZA	DECK 11, MID	11:00 AM - 6:30 PM
ROYAL COURT	DECK 3, MID	12:00 PM - 1:30 PM
TOW MATER'S GRILL	DECK 11, MID	11:00 AM - 11:00 PM

### DINNER

ANIMATOR'S PALATE	DECK 3, AFT	5:45 PM & 8:15 PM
ENCHANTED GARDEN	DECK 2, MID	5:45 PM & 8:15 PM
ROYAL COURT	DECK 3, MID	5:45 PM & 8:15 PM
CABANAS TABLE SERVICE	DECK 11, AFT	6:30 PM - 8:30 PM
PALO (18+) (RESERVATIONS REQ. & NON. FEE APPLIES)	DECK 12, AFT	6:00 PM - 8:30 PM
REMY (18+) (RESERVATIONS REQ. & NON. FEE APPLIES)	DECK 12, AFT	6:00 PM - 8:30 PM

### LATE NIGHT SNACKS

LA PIAZZA (18+)	DECK 4, AFT	10:45 PM - 11:45 PM
LUIGI'S PIZZA	DECK 11, MID	9:30 PM - 12:30 AM

### ADDED FEATURES

BEVERAGE STATION	DECK 11, MID	24 HOURS
EYE SCREAM	DECK 11, MID	11:00 AM - 11:00 PM
ROOM SERVICE	DIAL 0	24 HOURS

### ENTERTAINMENT - LOUNGES - BARS

Adults must be 21 and older to consume alcoholic beverages.

BON VOYAGE	DECK 3, MID	9:00 AM - 11:30 PM
COVE BAR (18+)	DECK 11, FWD	10:00 AM - 11:00 PM
COVE CAFE (18+)	DECK 11, FWD	10:00 AM - 12:00 AM
CURRENTS (18+)	DECK 13, FWD	10:00 AM - 11:00 PM
D LOUNGE	DECK 4, MID	SHOWTIMES
FROZONE TREATS	DECK 11, MID	10:00 AM - 10:00 PM
LA PIAZZA (18+ AFTER 9:00 P.M.)	DECK 4, AFT	3:00 PM - 12:00 AM
MERIDIAN (18+)	DECK 12, AFT	10:00 AM - 12:00 AM
O'GILLS PUB (18+ AFTER 9:00 P.M.)	DECK 4, AFT	12:00 PM - 12:00 AM
OOH LA LA (18+)	DECK 4, AFT	5:30 PM - 12:00 AM
OUTLOOK	DECK 14, MID	
SKYLINE (18+)	DECK 4, AFT	5:30 PM - 12:30 PM
THE TUBE (18+ AFTER 9:00 P.M.)	DECK 4, AFT	9:30 PM - 2:00 AM
VISTA CAFE	DECK 4, MID	7:00 AM - 11:00 PM
WAVES	DECK 12, AFT	10:00 AM - 6:00 PM

Public Health Advisory: Consuming raw or under-cooked meats, poultry, seafood, shellfish, or eggs may increase your risk for food borne illness, especially if you have certain medical condition

## TIME ZONE CHANGE

Remember to turn your clocks **FORWARD 1 HOUR** upon retiring on **SUNDAY** evening, or first thing **MONDAY** morning.



## GOOFY'S SPORTS

### Digital Simulators

Sports Simulator (Basketball, Baseball, Hockey, Football or Soccer)\$12 / half hr, \$20 / hr  
Golf Simulator \$25 / half hr, \$45 / hr

Reservations can be made at the Port Adventures Desk, Deck 5, Midship or at the Simulators, Deck 13, Aft.

