

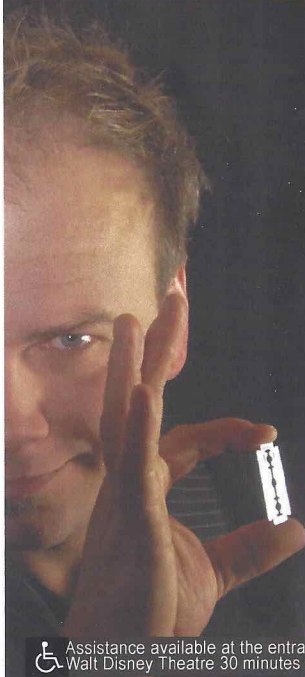
# PERSONAL NAVIGATOR



SUNDAY, SEPTEMBER 21, 2014

Sunrise: 5:54 am Sunset: 6:00 pm  
Evening Attire: Pirate or Cruise Casual  
All Ashore: Approx: 9:30 a.m.  
All Aboard: 5:45 p.m.  
Today: Thunderstorms High: 86°F/30°C  
Tomorrow: Cloudy High: 84°F/29°C

CARTAGENA, COLOMBIA



## SHOWTIME

FEATURING

# THE MAGIC & ILLUSION OF SCOTT ALEXANDER

WALT DISNEY THEATRE

Deck 4, Forward

6:15 p.m. & 8:30 p.m.

As a courtesy to all Guests, we kindly advise that the saving of seats is **not** permitted in the Walt Disney Theatre.

Assistance available at the entrance to the Walt Disney Theatre 30 minutes prior to show time.



## Cartagena Port Information

Cartagena or Cartagena de Indias is a large Caribbean beach resort city on the northern coast of Colombia in the Caribbean Coast Region and capital of Bolívar Department.

The city had a population of 892,545 as of the 2005 census, making it the fifth-largest city in Colombia and giving the Cartagena urban area the status of fifth-largest urban area in Colombia.

Cartagena is a center of economic activity in the Caribbean, as well as a popular tourist destination.

Activity and development of the Cartagena region, and the area around Cartagena Bay, by various indigenous people dates back to 4000 B.C.

The Spanish colonial city was founded on June 1, 1533 and is named after Cartagena, Spain.

Cartagena served a key role in the development of the region during the Spanish eras; it was a center of political and economic activity due to the presence of royalty and wealthy viceroys.

In 1984, Cartagena's colonial walled city and fortress were designated a UNESCO World Heritage Site.

**All you Buccaneers! Join Goofy and his Pirate friends as you shake your bones all night long! There be surprises, just don't invite Captain Hook!**

9:45 p.m.

Deck Stage  
Deck 9, Midship  
(Weather Permitting)

## Don't Miss:

### Who Am I?

Promenade Lounge, Deck 3, Aft - 11:45 am

Join your Cruise Staff in a fun and hilarious game where our panel has to guess who they are.

### Pirate Trivia

Promenade Lounge, Deck 3, Aft - 3:45 pm

Test the depths of your pirate knowledge with your Cruise Staff at this swashbuckling trivia event.

### A Pirate's Life For Me

Studio Sea, Deck 4, Midship - 7:30 pm

Calling all Pirates, we be! If ye have an adventurous spirit or pirate savvy, come spin the "Wheel of Destiny" for a treasure trove of fun be ripe for the takin' in this action packed pirate game show.

### Krazy Karaoke (18+)

WaveBands, Deck 3, Forward - 11:00 pm

Take to the stage, grab a microphone and sing your favorite tunes with your Club Host and DJ.



Book your next cruise onboard and save 10% on prevailing rates as quoted on [disneycruise.com](http://disneycruise.com). Plus, get an onboard credit and special deposit rate! Visit the Future Cruise Sales Desk for more information.

## DINNER MENU

Animator's Palate: Pirates Menu  
Parrot Cay: Pirates Menu  
Triton's: Pirates Menu

## DRINK OF THE DAY

Sunken Treasure (Alcoholic)  
Davy Jones (Non Alcoholic)

## IMPORTANT NUMBERS

Fire/Security: 7-3001  
Medical Emergency: 7-3000  
Health Center: 7-1923



# ADULT ACTIVITY HIGHLIGHTS



**VISTA SPA FITNESS CLASSES & SEMINARS**  
*Sunrise Stretch* - Vista Spa Fitness Center - 7:00 am  
*AB Attack* - Vista Spa Fitness Center - 8:30 am

CLUB  
18\*21

**CLUB 18\*21 - DINNER**  
*Beach Blanket, Deck 9, Aft* - 8:15 pm

## COFFEE MINGLE

*Cove Cafe, Deck 9, Midship* - 11:00 am  
 Join your fellow guests for an informal coffee mingle.

## ANIMATION CELLS

*Edge, Deck 2, Midship* - 11:00 pm  
 Learn what it takes to be a Disney Animator, then put your new skills to the test as you create your very own animation cell.



# FUN FOR ALL AGES HIGHLIGHTS

## MEET ANNA AND ELSE TICKET DISTRIBUTION

*Guest Services Desk, Deck 3, Midship*

Stop by today for your tickets to meet Princess Anna and her sister, Queen Elsa of Arendelle! Tickets are required in order to meet these royal sisters and can only be claimed at the Guest Services Desk. Don't miss out on your chance to meet these two sisters who will warm your heart. (Space is limited.)

## WHO AM I?

*Promenade Lounge, Deck 3, Aft* - 11:45 am

Join your Cruise Staff in a fun and hilarious game where our panel has to guess who they are.

## PIRATE TRIVIA

*Promenade Lounge, Deck 3, Aft* - 3:45 pm

Test the depths of your pirate knowledge with your Cruise Staff at this swashbuckling trivia event.

## PIN TRADING STATION

*Mickey's Mates, Deck 4, Midship* - 7:15 pm

A variety of limited-edition pins exclusively designed and created for Disney Cruise Line.



## A PIRATE'S LIFE FOR ME

*Studio Sea, Deck 4, Midship* - 7:30 pm

Calling all Pirates, we be! If ye have an adventurous spirit or pirate savvy, come spin the "Wheel of Destiny" for a treasure trove of fun be ripe for the takin' in this action packed pirate game show.

## THE CHALLENGE OF DAVY JONES

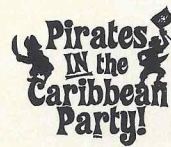
*Deck Stage, Deck 9, Midship* - 9:15 pm

Join us on deck for an interactive video game experience. You'll be the crew as we find out who is the better Captain... Captain Jack or Captain Barbosa?

## PIRATES IN THE CARIBBEAN DECK PARTY

*Goofy's Pool Stage, Deck 9, Midship* - 9:45 pm

Yer Disney Friends are all set for a swashbucklin' good time! Thar's a Pirate's Dinner all mapped out for yer feastin' before ya hoist yourself to Deck 9 to enjoy a rowdy buccaneer bash we call Pirates IN the Caribbean Deck Party. Swing & sway with lots of surprises and seafaring fun that all ends with a BLAST!





# YOUTH ACTIVITIES HIGHLIGHTS

## DINE & PLAY

A convenience for families dining at 8:15 pm, our Youth Activities counselors will be available at 9:15 pm at the entrance of Triton's and Parrot Cay dining rooms to bring registered children to join the fun in Disney's Oceaneer Club and Disney's Oceaneer Lab.



**Deck 5, Aft (7-18500) 9:00 am - 11:00 pm**

Infants and Toddlers can enjoy toys and activities at Flounder's Reef Nursery. Reservations are first come, first served so please stop by!



**Deck 5, Midship (7-1440) 8:00 am - 11:00 pm**  
(3 - 12 years old)

## COLOR YOURSELF HEROIC

5:00 pm

This your chance to become a superhero!

## SO YOU WANT TO BE A PIRATE?

7:30 pm

Have you learned about life on the high seas? Do you have what it takes to be a pirate? Join Captain Hook and friends to find out!



**Deck 5, Midship (7-1445) 9:00 am - 12:00 am**  
(3 - 12 years old)

## DETECTIVE SCHOOL

2:00 pm

It's a crime how much fun you'll have as you go CSI Goofy style.

## A PIRATE'S LIFE FOR ME

8:30 pm

Yo ho, yo ho, a Pirate's Life for Me! Aarrgh me mateys! Put your knowledge to the test!



**Deck 2, Midship (7-5810) 12:00 pm - 11:00 pm**  
(11 - 14 years old)

## PIRATE CRAFTS

5:00 pm

Aarrgh ye up to the challenge of creating your own pirate treasure?



**Deck 11, Midship (7-1456) 12:00 pm - 12:00 pm**  
(14 - 17 years old)

## A PIRATE'S LIFE FOR ME

11:30 pm

Yo ho, yo ho, a Pirate's Life for Me! Aarrgh me mateys! Put your knowledge to the test!

## YOUTH ACTIVITIES OPEN HOUSE

Open House is an opportunity for all to come and participate in a variety of exciting activities and free time in the Oceaneer Club, Oceaneer Lab, Flounder's Reef Nursery, Vibe and Edge throughout the cruise. During these times secured programming will still be offered in the other venue for those looking to check their children into care.

**Edge:** 10:00 am - 12:00 pm  
& 6:00 pm - 8:00 pm  
(Adult Exclusive):  
11:00 pm - 12:00 am

**Disney's Oceaneer Lab:** 10:45 am - 12:30 pm  
& 4:00 pm - 5:30 pm  
**Vibe:** 11:00 am - 12:00 pm  
& 4:00 pm - 6:00 pm

## PIRATES OF THE CARIBBEAN

### Pirates of The Caribbean: Challenge of Davy Jones

9:15 p.m., Deck Stage, Deck 9, Midship

Join us on deck for an interactive video game experience. You'll be the crew as we find out who is the better captain... Captain Jack or Captain Barbosa.

**Pirates IN The Caribbean  
Pre - Deck Party: 9:45 p.m.  
Deck Party: 10:00 p.m.  
Fireworks: 10:28 p.m.**

**Deck Stage, Deck 9, Midship**  
It's a Pirate Celebration, me hearties!

Yer Disney Friends are all set for a swashbucklin' good time! Thar's a Pirate's Dinner all mapped out for yer feastin' before 'ya hoist yourself to Deck 9 to enjoy a rowdy buccaneer bash we call Pirates IN the Caribbean Deck Party.

(Weather Permitting)

Viewing areas located Deck 9 Midship port side gazebo and next to Pinocchio's Pizzeria port side.



## BUENA VISTA THEATRE

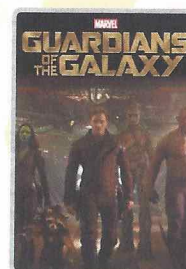
Deck 5, Aft

### Today's Movies



8:30 am

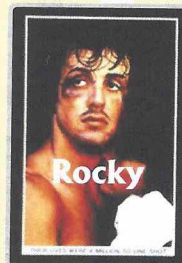
Duration: 1 hr 25 mins  
Rating: G



10:30 am

Duration: 2 hrs 2 mins  
Rating: PG-13

DOLBY 3D



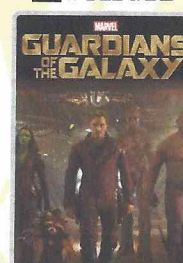
3:00 pm

Duration: 1 hr 59 mins  
Rating:



5:30 pm & 8:30 pm

Duration: 1 hr 37 mins  
Rating: PG



10:30 pm

Duration: 2 hrs 2 mins  
Rating: PG-13



# MORE TO ENJOY WHILE ONBOARD



## NEW IN 2015!

Chart a magical new course for northern Europe - explore Norwegian fjords - steeped in Viking History from steaming geysers to scenic mountain ranges. Visit the Onboard Sales Desk for more information.



## DISNEY VACATION CLUB® GROUP PREVIEW

Want to learn more about taking magical vacations year after year? Please see a Disney Vacation Club representative on Deck 4, Midship, or call 7-2805 from your stateroom phone for more information about our interactive group presentation.



## PORT AND SHOPPING INFORMATION

For all of your Port and Shopping Information, don't forget to visit the Port and Shopping Desk on Deck 3, Midship.



## VISTA SPA

Deck 9, Forward - Phone: 7-1465

### CLEOPATRA SPECIAL

Today only! Receive the below 50 minute Treatment for only \$159.

Hot Stone Back Massage, Skin Nourishing Body Wrap, Foot Pressure Point Massage, Frangipani Scalp Massage

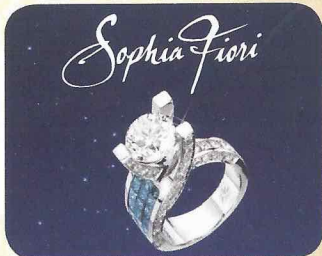
*18% Gratuity is automatically added to all Spa services, specials and amenities.*

## TODAY'S SHOPPING SPECIAL

Stop by Treasure Ketch to try on the world's most memorable white diamond pieces and commemorate your cruise. Ask the hosts about 50% savings off US retail.

**TREASURE KETCH**

Deck 4, Forward



## SAY CHEESE!

Formal portraits tonight in the Lobby Atrium, Deck 3, Midship.

Available 5:00 pm - 6:00 pm, 7:15 pm - 8:15 pm and 9:30 pm. - 10:30 pm.

*\*Please note that photos are available for viewing on our interactive photo kiosks approximately five hours after being taken and are only available for purchase during this cruise.*

## QUARTER MASTERS ARCADE

Demonstrate your cutting expertise at BARBERCUT and win an Ipod Nano or an Ipod Shuffle! Only at Quarter Masters Arcade, located on Deck 9, Midship, where the winners win.

## Connect@Sea

We are now offering a NEW and improved Internet service to stay connected on your cruise like no other in the industry! Internet packages range from \$0.25 per MB - \$89.00 (1000 MB package). For more information contact your Connect@Sea Expert or Guest Services onboard.

Disney Cruise Line



Our desk is open early for you to come down and choose a last minute adventure for today in Cartagena. Be sure to choose one of the many adventures that we have to offer. Why not tour the Rosario islands or tour the city and learn about its culture and history. Book your adventure today at our desk, Deck 3 midship.

## SHOPPING

### ARTWORK BY DANIEL ARRIAGA AT THE VISTA GALLERY

View enchanting artwork by visiting the Vista Gallery for the Disney Storytellers series featuring artists such as Daniel Arriaga. Having provided his artistic talent to Walt Disney Animation Studios and, his current home, Pixar Animation Studios, Daniel's creations capture your favorite Disney characters in a way that is sure to excite any Disney fan. Vista Gallery, Deck 4, Midship.

### PIRATE PARTY GEAR

Arrgh...It's time to embrace your inner pirate! Make your way to Mickey's Mates, Deck 4, Forward, to find a treasure trove of pirate gear. Everything from costumes and apparel to hats and accessories.

### PIRATE MERCHANDISE

Arrgh.....It's time to embrace your inner pirate! Make your way to Mickey's Mates to find a treasure trove of pirate gear, everything from costumes and apparel to hats and accessories.

### CITIZEN ECO DRIVE WATCHES

It starts with a simple, yet revolutionary concept: a watch that never needs a battery. Citizen Eco-Drive technology harnesses the power of light from any natural or artificial light source and converts to energy. See the Collection of Mens and Ladies watches available in Treasure Ketch.

### VERA BRADLEY COLLECTION!

For over 20 years, Vera Bradley has been creating bags and accessories from lovely new fabrics and styles that are introduced each season. The functionality and quality are a testament to the brand name. See the collection at Treasure Ketch.

### CHAMILIA JEWELRY

Create and personalize your own Chamilia Bracelet. Choose from a selection of sterling silver beads with many of them featuring your favorite Disney Characters! Available in Treasure Ketch.

### SOPHIA FIORI DIAMOND TRUNK SHOW

Sophia Fiori is the world's leader in vivid colored diamonds and jeweler to the stars. Meghan and Oscar are Jewelry Stylists with Sophia Fiori and diamond industry experts. For THIS WEEK ONLY, the Sophia Fiori team brought with them over \$1 Million in Diamonds and Tanzanite Jewelry at all price points from \$500 up to extravagant connoisseur pieces.

## IMPORTANT INFORMATION

### Security Notice

All Guests (including Children) who wish to disembark or embark the ship are required to present their Key to the World card at the gangway. A photo ID is also required for those Guests who are 18 years of age or older. Guests under the age of 18 are required to have a parent, guardian or other responsible adult sign an authorization form at the Guest Service Desk if they wish to go ashore unaccompanied or with any adult from another stateroom.

### Sunscreen/Insect Repellent Advisory

Use sunscreen first and protect against mosquito bites and related illnesses by applying insect repellent on top of sunscreen when going ashore. Insect repellent is available for purchase in Treasure Ketch.

### Cold and Flu Reminder

Please wash hands frequently and thoroughly, particularly before meals. Contact the Health Center by dialing 7-1923, should anyone in your party become ill.

### Inclement Weather

For the safety of all Guests, outdoor events may be changed due to unforeseen weather conditions.

### Corridor Quiet Hours

As a courtesy to all our Guests, please recognize quiet hallway hours from 10:00 pm til 8:00 am.

### Environmental Message

With Disney's commitment to the Environment please refrain from throwing anything over the Ship's side. Thank you.

### No Reserved Seats Policy

As a courtesy to all Guests we kindly advise that the saving of seats is not permitted in the Walt Disney Theatre, and the saving of the sun loungers is not permitted on Deck 9 and 10. Items left unattended will be, Midship.

### Smoking

For the comfort of our guests, the following areas are designated as smoking areas:

- Deck 10, forward, Starboard side
- Deck 9, forward, Starboard side at Quiet Cove
- Deck 4, aft, starboard side from 6:00 pm to 6:00 am only (all of Deck 4 is non-smoking from 6:00 am to 6:00 pm.)

Smoking is prohibited inside all guest staterooms and on stateroom verandahs. Guest found smoking in their staterooms or on their verandahs will be charged a \$250 stateroom recovery fee.

Electronic cigarettes may only be used in designated smoking areas.

### Walt Disney Theatre

Theatrical performances may use artificial fog, strobe lights, pyrotechnics and other special effects. For the safety of our performers and the comfort of those around you, the use of any photography or video recording device or any electronic equipment is prohibited.

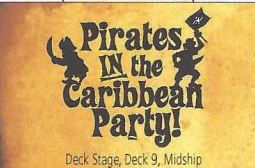








### Verandah Safety

Please do not leave any combustible materials on your balcony when not present in your stateroom for safety reasons.



Morning	8:30	8:45	9:00	9:15	9:30	9:45	10:00	10:15	10:30	10:45	11:00	11:15	11:30	11:45	12:00	12:15	12:30	12:45	1:00	1:15	1:30		
FUNNEL VISION			Virtual Tours Funnel Vision				101 Dalmatians (G) Funnel Vision										Emperor's New Groove (G) Funnel Vision						
BUENA VISTA THEATRE	Disneynature: Bears (G) Duration: 1 Hour 25 Minutes								Guardians of the Galaxy (PG-13) Duration: 2 Hours 2 Minutes														
CHARACTERS			Mickey & Minnie Lobby Atrium (P)			Donald, Daisy Lobby Atrium (P)																	
			Goofy Lobby Atrium (S)			Chip & Dale Lobby Atrium (S)																	
FUN FOR ALL AGES	Interdenominational Service Cadillac Lounge (Guest Led)													Who Am I? Promenade Lounge									
	Toddler Time Disney's Oceaneer Club																						
ADULTS	Ab Attack Vista Spa Fitness Center								Coffee Mingle Cove Cafe								Cruise Staff Lunch Triton's						
															NFL: Green Bay Packers vs Detroit Lions Diversions (Subject to satellite availability)								
VIBE 14-17 YEARS OLD											Youth Activities Open House 🎮						Your Pick: Movies						
EDGE 11-14 YEARS OLD							Youth Activities Open House 🎮								Matinee Movie								
OCEANEER LAB 3-12 YEARS OLD						Game Challenge							Youth Activities Open House 🎮							Lunch			
											Animation Antics 🎮												
OCEANEER CLUB 3-12 YEARS OLD	Pre School Fun											Memory Wall 🧠				Pirate Crafts					Lunch		
						Hats Off to Peter Pan																	

Afternoon	1:45	2:00	2:15	2:30	2:45	3:00	3:15	3:30	3:45	4:00	4:15	4:30	4:45	5:00	5:15	5:30	5:45	6:00	6:15	6:30	6:45	
FUNNEL VISION		The Little Mermaid (G) Funnel Vision							Virtual Tours Funnel Vision				Live Music with Carrie Stone Gazebo				Pixar Short Films Funnel Vision					
BUENA VISTA THEATRE						Movie Classic: Rocky Duration: 1 Hour 59 Minutes										Maleficent (PG) Duration: 1 Hour 37 Minutes						
CHARACTERS													Pirate Mickey & Friends Lobby Atrium			Jack Sparrow Preludes						
FUN FOR ALL AGES		Pictionary Challenge Promenade Lounge							Pirate Trivia Promenade Lounge	Youth Activities Open House Piston Cup Challenge 🎮 Disney's Oceaneer Lab						Showtime: The Magic & Illusion of <b>Scott Alexander</b> Walt Disney Theatre						
						Crafts: 3D Crafts Promenade Lounge																
											Toddler Time Captain's Closet, Disney's Oceaneer Club											
ADULTS	Informal Bridge Play Diversions			NFL: Denver Broncos vs Seattle Seahawks Diversions (Subject to satellite availability)																		
	NFL: Green Bay Packers vs Detroit Lions Diversions (Subject to satellite availability)															Walk a Mile Deck 4 Forward Elevators						
VIBE 14-17 YEARS OLD	Your Pick: Movies	Your Pick: Games Galore				Scattegories				Youth Activities Open House 🎮										Pirate Crafts		
EDGE 11-14 YEARS OLD	Matinee Movie	Homework Help				Chillin' in Edge				Smoothie Hour				Pirate Crafts				Youth Activities Open House 🎮				
OCEANEER LAB 3-12 YEARS OLD		Detective School								Youth Activities Open House 🎮								Dinner				
										Piston Cup Challenge 🎮												
OCEANEER CLUB 3-12 YEARS OLD			Pirate Prep 🏴‍☠️						Bingo 🟡						Color Yourself Heroic 🦸			Dinner in Disney's Oceaneer Lab				

Evening	7:00	7:15	7:30	7:45	8:00	8:15	8:30	8:45	9:00	9:15	9:30	9:45	10:00	10:15	10:30	10:45	11:00	11:15	11:30	11:45	12:00	
FUNNEL VISION											The Challenge of Davy Jones Funnel Vision		Pirates IN The Caribbean Deck Party Funnel Vision									
BUENA VISTA THEATRE							Maleficent (PG) Duration: 1 Hour 37 Minutes						Guardians of the Galaxy (PG-13)  DOLBY 3D Duration: 2 Hours 2 Minutes									
CHARACTERS		Hook & Smee Lobby Atrium (P)		Jack Sparrow Preludes						 Deck Stage, Deck 9, Midship												
		Minnie Lobby Atrium (S)		Mickey Lobby Atrium (P)																		
FUN FOR ALL AGES		Pin Trading Mickey's Mates	 Studio Sea				Showtime: The Magic & Illusion of <b>Scott Alexander</b> Walt Disney Theatre		The Challenge of Davy Jones Goofy's Pool Stage									DJ Dan Deck Stage				
		Live Music with Take Cover Promenade Lounge																				
ADULTS	NFL: Pittsburgh Steelers vs Carolina Panthers Diversions (Subject to satellite availability)										Music Under the Stars with Take Cover Quiet Cove				Animation Cells Edge							
	Live Guitar with Carrie Stone Cadillac Lounge				Club 18*21 - Dinner Beach Blanket						Live Guitar with Carrie Stone Cadillac Lounge		Live Piano Cadillac Lounge		Krazy Karaoke WaveBands							
VIBE 14-17 YEARS OLD	Pirate Crafts		Smoothie Hour				Pirate Prep				Pirate Deck Party				Gotcha Registration				A Pirate's Life For Me			
EDGE 11-14 YEARS OLD	Youth Activities Open House 								Pirate Prep				Pirate Deck Party				Adult Exclusive Open House 					
OCEANEER LAB 3-12 YEARS OLD			Pirate Prep 					A Pirate's Life For Me 					Treasure Hunt 									
OCEANEER CLUB 3-12 YEARS OLD			So You Want to be a Pirate? 						Pirate Games 													

Symbol for activities that will be repeated during the cruise



FOLD

Fold along the dotted lines and take me with you so you don't miss any of the fun!

FOLD

IN THE SPOTLIGHT SERIES  
SOURCE IT! SERIES  
JUMP UP! SERIES  
CREATE & INVENT SERIES  
OPEN HOUSE  
CLUBHOUSE SERIES  
TECHNOLOGY SERIES



SUNDAY, SEPTEMBER 21, 2014 - CARTAGENA

# BUENA VISTA THEATRE

Deck 5, Aft

DOLBY 3D



8:30 am Duration: 1 hr 25 mins Rating: G	10:30 am Duration: 2 hrs 2 mins Rating: PG-13	3:00 pm Duration: 1 hr 59 mins Rating:	5:30 pm & 8:30 pm Duration: 1 hr 37 mins Rating: PG	10:30 pm Duration: 2 hrs 2 mins Rating: PG-13
---	--	---	--	--

## Character Appearances

<b>GOOFY</b> Lobby Atrium (S) - 9:00 am	<b>PIRATE MINNIE MOUSE</b> Lobby Atrium (S) - 7:15 pm
<b>MICKEY &amp; MINNIE</b> Lobby Atrium (P) - 9:00 am	<b>PIRATE CHIP &amp; DALE</b> Deck 4, Midship - 7:15 pm
<b>DONALD &amp; DAISY</b> Lobby Atrium (P) - 9:30 am	<b>PIRATE MICKEY MOUSE</b> Lobby Atrium (P) - 7:45 pm
<b>CHIP &amp; DALE</b> Lobby Atrium (S) - 9:30 am	<b>PETER PAN</b> Deck 4, Midship - 7:45 pm
<b>PIRATE MICKEY &amp; FRIENDS GROUP PHOTO</b> Lobby Atrium - 4:45 pm	<b>PIRATE STITCH</b> Lobby Atrium (S) - 7:45 pm
<b>CAPTAIN JACK SPARROW</b> Preludes 5:30 pm & 7:45 pm	<b>PIRATES IN THE CARIBBEAN DECK PARTY</b> Goofy's Pool Stage - 9:45 pm
<b>CAPTAIN HOOK &amp; MR SMEE</b> Lobby Atrium (P) - 7:15 pm	

(P) - Port Side (S) - Starboard Side

Don't forget your Camera to capture those Magical Moments!  
Check here each day for all of today's Character Appearances or refer to the Character Board in the Lobby Atrium.  
Meet-and-Greets will be advertised for the length of time the line will be open. To avoid disappointment, please meet at start time of appearances.

## YOUTH ACTIVITIES THEMED EXPERIENCES

**CLUBHOUSE SERIES**  
focuses on movement and features content which appeals to younger children.

**JUMP UP! SERIES**  
includes large group games & movement-oriented activities.

**IN THE SPOTLIGHT SERIES**  
focuses on children's stage presence with lots of activities and enthusiasm.

**STORYBOOK SERIES**  
is designed with a strong connection to the Disney classic stories.

**CREATE & INVENT SERIES**  
are less active, but will challenge children to create and admire their work.

**SOLVE IT! SERIES**  
are less active, but will challenge children with problem/solutions-based activities.

### YOUTH ACTIVITIES OPEN HOUSE

Activities for families, adults and children of all ages to enjoy together.

## SHIP DIRECTORY

### YOUTH ACTIVITIES

DISNEY'S OCEANEER CLUB	DECK 5, MID	8:00 AM - 11:00 PM
DISNEY'S OCEANEER LAB	DECK 5, MID	9:00 AM - 12:00 AM
EDGE	DECK 2, MID	12:00 PM - 11:00 PM
VIBE	DECK 11, MID	12:00 PM - 12:00 PM
FLOUNDER'S REEF NURSERY	DECK 5, AFT	9:00 AM - 11:00 PM

### POOLS

Children under 12 years of age must have adult supervision in all pools.

GOOFY'S POOL	DECK 9, MID	9:00 AM - 6:00 PM
MICKEY'S POOL	DECK 9, AFT	8:00 AM - 9:00 PM
MICKEY'S SLIDE	DECK 9, AFT	12:30 PM - 5:30 PM
MICKEY'S SPLASH ZONE	DECK 9, AFT	12:30 PM - 5:30 PM
QUIET COVE POOL (18+)	DECK 9, FWD	6:00 AM - 12:00 AM

### RECREATION

PORT ADVENTURES DESK	DECK 3, MID	8:00 AM - 10:00 AM
VISTA FITNESS CENTER (18+)	DECK 9, FWD	6:00 AM - 10:00 PM
WIDE WORLD OF SPORTS DECK	DECK 10, FWD	24 HOURS

### GENERAL INFORMATION

BUENA VISTA THEATRE	DECK 5, AFT	SHOWTIMES
DISNEY VACATION CLUB DESK	DECK 4, MID	5:00 PM - 10:00 PM
FUNNEL VISION	DECK 9, MID	SHOWTIMES
GUEST SERVICES	DECK 3, MID	24 HOURS
MEDICAL HEALTH CENTER	DECK 1, FWD	9:30 AM - 11:00 AM 4:30 PM - 7:00 PM
ONBOARD SALES DESK	DECK 4, MID	5:00 PM - 6:00 PM 7:30 PM - 10:00 PM
PORT & SHOPPING DESK	DECK 3, MID	7:30 PM - 8:30 PM
PRELUDES	DECK 4, FWD	5:45 PM - 6:15 PM 7:45 PM - 8:30 PM
QUARTER MASTERS (ARCADE)	DECK 9, MID	24 HOURS
SHUTTERS PHOTO GALLERY	DECK 4, AFT	10:30 AM - 10:30 PM
VISTA SPA AND SALON	DECK 9, FWD	8:00 AM - 10:00 PM
WALT DISNEY THEATRE	DECK 4, FWD	SHOWTIMES

### SHOPPING

ART GALLERY	DECK 4, MID	7:00 PM - 9:00 PM
MICKEY'S MATES	DECK 4, FWD	6:30 PM - 10:30 PM
RADAR TRAP (DUTY FREE)	DECK 3, FWD	6:30 PM - 10:30 PM
TREASURE KETCH	DECK 4, FWD	6:30 PM - 10:30 PM

## IMPORTANT NUMBERS

Fire/Security:	7-3001
Medical EMERGENCY:	7-3000
Health Center:	7-1923

**DINNER MENU**  
Animator's Palate: Pirates Menu  
Parrot Cay: Pirates Menu  
Triton's: Pirates Menu  
Dining Times: 5:45 p.m. & 8:15 p.m.

**DRINK OF THE DAY**  
Sunken Treasure (Alcoholic)  
Davy Jones (Non - Alcoholic)

**WEATHER FORECAST**  
Today: Thunderstorms  
High: 86°F/30°C  
Tomorrow: Cloudy  
High: 84°F/29°C

**Evening Attire:** Pirate or Cruise Casual

## DINING & LOUNGES

### BREAKFAST

BEACH BLANKET BUFFET	DECK 9, AFT	7:15 AM - 10:30 AM
GOOFY'S GALLEY	DECK 9, AFT	6:30 AM - 8:30 AM
PARROT CAY	DECK 3, AFT	7:30 AM - 10:45 AM
TRITON'S (À-LA CARTE)	DECK 3, MID	7:45 AM - 9:30 AM

### LUNCH

BEACH BLANKET BUFFET	DECK 9, AFT	12:00 PM - 3:00 PM
GOOFY'S GALLEY	DECK 9, AFT	10:30 AM - 7:00 PM
PINOCCHIO'S PIZZERIA	DECK 9, MID	10:30 AM - 6:00 PM
PLUTO'S DOG HOUSE	DECK 9, AFT	10:30 AM - 6:00 PM
TRITON'S	DECK 3, MID	12:00 PM - 1:30 PM

### DINNER

ANIMATOR'S PALATE	DECK 4, AFT	5:45 PM
PARROT CAY	DECK 3, AFT	5:45 PM & 8:15 PM
TRITON'S	DECK 3, MID	5:45 PM & 8:15 PM
PALO* (18+)	DECK 10, AFT	6:00 PM - 9:00 PM
BEACH BLANKET (À-LA CARTE)	DECK 9, AFT	6:30 PM - 8:30 PM
PLUTO'S DOG HOUSE	DECK 9, AFT	6:00 PM - 9:45 PM

### LATE NIGHT SNACKS

BEACH BLANKET BUFFET (PIRATE)	DECK 9, AFT	10:30 PM - 11:15 PM
ICE CREAM AT GOOFY'S GALLEY	DECK 9, AFT	7:00 PM - 9:45 PM
PINOCCHIO'S PIZZERIA	DECK 9, MID	9:30 PM - 12:30 AM

### ADDED FEATURES

BEVERAGE STATION	DECK 9, AFT, PORT SIDE	24 HOURS
ROOM SERVICE	DIAL 6801 OR 6802	24 HOURS

### ENTERTAINMENT - LOUNGES - BARS

Adults must be 21 and older to consume alcoholic beverages.

CADILLAC LOUNGE (18+)	DECK 3, FWD	5:30 PM - 12:00 AM
COVE CAFE (18+)	DECK 9, MID	6:30 AM - 12:00 AM
DIVERSIONS (18+ AFTER 9:00 PM)	DECK 3, FWD	12:00 PM - 12:00 AM
INTERNET CAFE	DECK 3, AFT	24 HOURS
OUTLOOK CAFE (18+)	DECK 10, MID	7:00 AM - 12:00 AM
PINOCCHIO'S PIZZERIA	DECK 9, MID	9:00 AM - 12:30 AM
PLUTO'S DOG HOUSE	DECK 9, AFT	10:30 AM - 6:00 PM

PRELUDES	DECK 4, FWD	5:30 PM - 9:00 PM
PROMENADE LOUNGE (FAMILY)	DECK 3, AFT	8:00 AM - 12:00 AM
SIGNALS (18+)	DECK 9, FWD	9:30 AM - 12:00 AM
STUDIO SEA	DECK 4, MID	SHOWTIMES
WAVEBANDS (18+)	DECK 3, FWD	7:30 PM - 2:00 AM

Public Health Advisory: Consuming raw or under-cooked meats, poultry, seafood, shellfish, or eggs may increase your risk for food borne illness, especially if you have certain medical condition

All Ashore: Approx: 9:30 a.m.  
All Aboard: 5:45 p.m.

Ship's Agent In Cartagena

Jaime Rozo Gomez & CIA SAS., Ship Chandler Ph: 011-57-5-662-3221/  
662-2216 Mobile; 57-315-6864-480; Transv: 48#21-85 Calle Nilo, El Bosque