

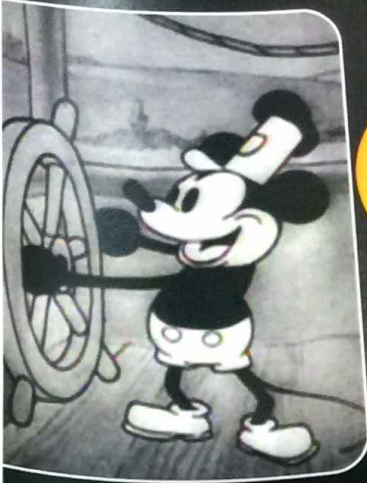
# PERSONAL NAVIGATOR

THURSDAY, OCTOBER 16, 2014



Sunrise 5:49 am Sunset: 5:39 pm  
Evening Attire: Semi Formal  
All Ashore: 7:00 am  
All Aboard: 4:45 pm  
Today: Cloudy High: 84°F/29°C  
Tomorrow: Cloudy High: 84°F/29°C

ST. JOHN'S, ANTIGUA



## WALT & DISNEY The Dream Goes On

WALT DISNEY THEATRE

Deck 4, Forward

6:30 pm & 8:45 pm



As a courtesy to all Guests, we kindly advise that the saving of seats is **not** permitted in the Walt Disney Theatre.



Assistance available at the entrance to the Walt Disney Theatre 30 minutes prior to show time

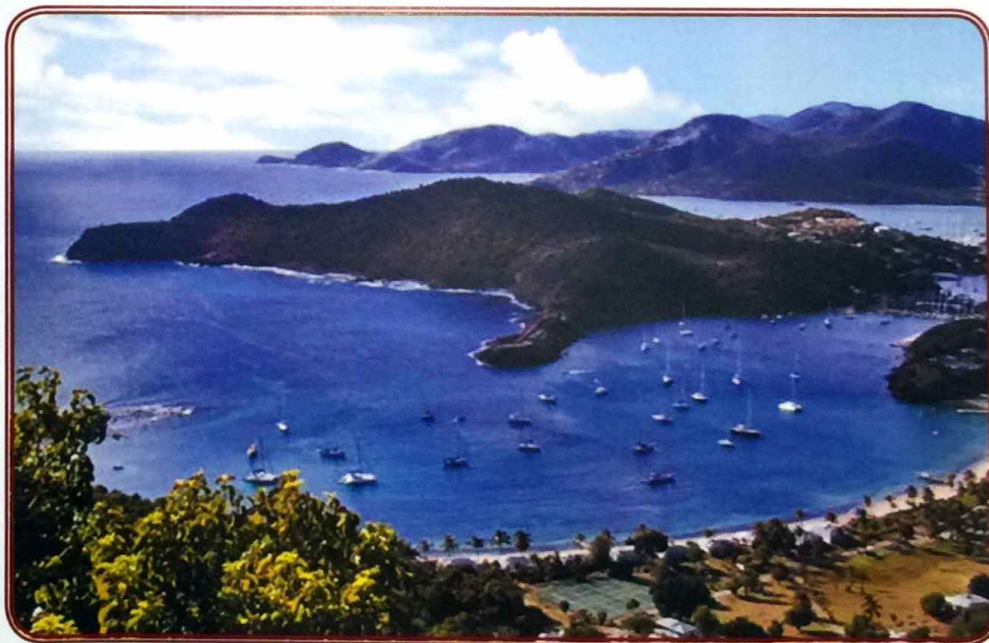


## Welcome to St. John's, Antigua

In 1684 Sir Christopher Codrington came to Antigua to find out if the island would support a large-scale sugar cultivation. Over the next fifty years sugar cultivation on Antigua was very successful. The island developed more than 150 cane-processing windmills, today almost 100 of these stone towers remain. They serve as houses, bars, restaurants and shops. At Betty's hope, visitors can see a fully-restored sugar mill.

Antigua is approximately 14 miles long and 11 miles wide, encompassing 108 square miles. Its highest point is Boggy Peak (1,319 ft.), located in the southwestern corner of the island. Barbuda, a flat coral island with an area of only 68 square miles, lies approximately 39 miles due north. The nation also includes the tiny (0.6 square mile) uninhabited island of Redonda, now a nature preserve.

The earliest European contact was made by Christopher Columbus, who sighted the island and named it after Santa Maria la Antigua. In 1784, Admiral Horatio Nelson arrived and established Antigua as Great Britain's most important Caribbean base.



Disney Cruise Line

PORT ADVENTURES

Check your port adventures tickets for your tour meeting time and location or availability and tour information.

## DINNER MENU

Animator's Palate : Captains Gala  
Carioca's : Captains Gala  
Lumiere's : Captains Gala

## DRINK OF THE DAY

High Tide (Alcoholic)  
Passion Cream Freeze (Non-Alcoholic)

## IMPORTANT NUMBERS

Fire/Security: 7-3001  
Medical Emergency: 7-3000  
Health Center: 7-1923



# ADULT ACTIVITY HIGHLIGHTS



**SENSES SPA FITNESS CLASSES & SEMINARS**  
*Stretch & Relax* - Senses Spa Fitness Center - 7:30 am  
*Body Sculpt Boot Camp* - Senses Spa Fitness Center - 8:00 am  
*Yoga* - Senses Spa Fitness Center - 9:00 am  
*Group Cycling* - Senses Spa Fitness Center - 10:00 am  
*Back Pain Solutions* - Senses Spa & Salon - 5:00 pm

## TASTING CLASSES

*Rum Tasting* (21+) - O'Gills Pub - 4:30 pm  
*Whiskey Tasting* (21+) - Cove Cafe - 10:30 pm  
 Please make reservations for tastings at Guest Services for a nominal fee.  
 Tasting Seminars are only for Guests 21 and older.

CLUB  
18\*21

**CLUB 18\*21 - SOCIAL**  
*Cove Cafe, Deck 9, Midship* - 5:30 pm  
 Come and socialize with your fellow cruisers.

**CLUB 18\*21 - MIXER**  
*Fathoms, Deck 3, Forward* - 10:00 pm  
 Come join fellow cruisers your own age at our exclusive Club 18\*21 event.

## ART OF THE THEME SHOW TOUR

*Palo, Deck 10, Aft* - 4:00 pm  
 Join us on a guided ship tour and discover the key ingredients that make the Disney Magic.

## ULTIMATE DISNEY TRIVIA

*O'Gills Pub, Deck 3, Forward* - 7:45 pm  
 Join us for the Ultimate test of your Disney Knowledge in this fun trivia.

## PUB QUIZ

*O'Gills Pub, Deck 3, Forward* - 9:45 pm  
 Join us as we test your knowledge against your fellow Guests at our Pub Quiz challenge.

## ROCKIN' ROWDY

*Fathoms, Deck 3, Forward* - 10:45 pm  
 Join your Club Host as we round up the greatest classic rock and urban country hits. Featuring a bootstomping performance from the Boot Scootin' dancers to start the party.

ROCKIN'  
ROWDY!



# FUN FOR ALL AGES HIGHLIGHTS

## XBOX: DISNEY INFINITY (10+)

*O'Gills Pub, Deck 3, Forward* - 12:15 pm  
 Get creative and build magical worlds of wonder as one of your favorite Disney characters in Disney's Infinity.

## CRAFTS: BUTTONS

*O'Gills Pub, Deck 3, Forward* - 1:15 pm  
 Make some fun buttons with your Cruise Staff

## PICTIONARY CHALLENGE

*Promenade Lounge, Deck 3, Aft* - 2:30 pm  
 Join your Cruise Staff for this exciting game of fast draw.

## XBOX: FAMILY FEUD

*Promenade Lounge, Deck 3, Aft* - 3:30 pm  
 Survey says? Join us as we play a round of Family Feud!

## TODDLER TIME

*Promenade Lounge, Deck 3, Aft* - 4:15 pm  
 Join us for some fun activities that your toddler is sure to enjoy.

## MEGA RAFFLE JACKPOT BINGO

*Bingo Pre-Sales start at 4:15 pm*  
*Fathoms, Deck 3, Forward* - 4:30 pm  
 Join your Cruise Staff for family Bingo fun! Four cash prize games and great raffle prize packs to be won. Plus free Disney goodies for all in attendance! Don't miss out on the fun! Pre Sales start 15 minutes prior to game.

BINGO

## CAPTAIN'S SIGNING

*White Caps, Deck 4, Forward* - 7:15 pm  
 Meet the Master of the Disney Magic and have your cruise memories signed.

## THE PUMPKIN TREE

*Lobby Atrium, Deck 3, Midship* - 7:30 pm  
 The Pumpkin Tree has bloomed, but one more surprise is in store for all of you. All ages are welcome to join us in the Atrium for some frightening fun as we celebrate Halloween with a spooky ceremony that will have you screaming with ghoulish delight.

The  
Pumpkin  
Tree

## SO YOU THINK YOU KNOW YOUR FAMILY?

*D Lounge, Deck 4, Midship* - 7:45 pm & 9:45 pm  
 This fun-filled family game show is always full of surprises. Find out how well you know, or don't know your family!

## CLUB NEW YEAR'S EVE

*D Lounge, Deck 4, Midship* - 10:30 pm  
 Club New Year's Eve, you won't want to miss this journey of musical genres in history and performances by some of your favorite Cruise Staff. Bring your family and help us count down to a brand new year!

CLUB  
NEW YEAR'S  
EVE

## TIM BURTON'S THE NIGHTMARE BEFORE CHRISTMAS SING AND SCREAM

*Walt Disney Theatre, Deck 4, Forward* - 10:30 pm  
 You're invited to a special presentation of Tim Burton's popular classic, presented in 3-D. Featuring state-of-the-art projection, sound and in-theatre effects, you become part of the experience, as you sing and scream along. You never know who may show up.

THE  
NIGHTMARE  
BEFORE  
CHRISTMAS  
-SING AND SCREAM-



# YOUTH ACTIVITIES HIGHLIGHTS

## DINE & PLAY

As a convenience for families dining at 8:15 pm, our Youth Activities Counselors will be available at 9:15 pm at the entrance of Lumiere's and Carioca's and at 9:30 pm at the entrance of Animator's Palate to bring registered children to join the fun in Disney's Oceaneer Club and Disney's Oceaneer Lab.



Deck 5, Aft (7-5864)

7:30 am - 11:00 pm

Infants and Toddlers can enjoy toys and activities at It's a small world nursery. Reservations are first come, first served so please stop by!



Deck 5, Midship (7-1439)  
(3-12 years old)

7:30 am - 11:00 pm

### MEMORY WALL

10:45 am

We've got a match! It's the ultimate matching game in the Oceaneer Club.

### CARNIVAL EXTRAVAGANZA

7:45 pm

Come and join us for a circus in Youth Activities.



Deck 5, Midship (7-1445)  
(3-12 years old)

11:00 am - 12:00 am

### SUPER SLOPPY SCIENCE

3:30 pm

Join Professor Make-O-Mess in some of the most extreme experiments you will ever see in the world of Super Sloppy Science!

### PINATA PARTY

5:00 pm

It's time to celebrate with decorations, gift giving, and a whole fun and crazy party in the Oceaneer Lab!



Deck 2, Midship (7-5816)  
(11-14 years old)

10:30 am - 1:00 am

### TRIVIA CHALLENGE

12:00 pm

Hope you've been studying - it's trivia time! Who will be the first to answer correctly and be ultimate trivia challenge winner?

### SCAVENGER HUNT

2:00 pm

A little friendly competition exploring the ship; see if you can solve the clues and finish first.



Deck 10, Midship (7-18517)  
(14-17 years old)

12:00 pm - 12:00 am

### GENDER WARS

5:30 pm

Join us as we find out who really are the kings or queens of the castle.

### PUMP IT UP

9:00 pm

Join us in the Fitness Center for a Teen Only workout. Meet in Vibe to join in!

# BUENA VISTA THEATRE

Deck 5, Aft  
Today's Movies

cc Open Captioning



8:30 am  
Duration:  
2 hrs 2 mins  
Rating: PG

en Español

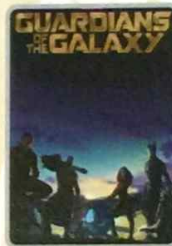


3:15 pm  
Duration:  
1 hr 37 mins  
Rating: PG



11:00 am  
Duration:  
1 hr 21 mins  
Rating: PG

DOLBY 3D



5:30 pm & 8:00 pm  
Duration:  
2 hrs 2 mins  
Rating: PG-13



12:45 pm  
Duration:  
2 hrs 2 mins  
Rating: PG-13

DOLBY 3D



10:30 pm  
Duration:  
2 hrs 16 mins  
Rating: PG-13



## FAMILY VARIETY ACT

Featuring the  
Comedy & Magic  
of Magic Dave,  
as he entertains the  
entire family in this  
fun-filled show.

*Fathoms,  
Deck 3, Forward  
7:45 pm*



## ADULT VARIETY ACT

Featuring the  
Comedy & Juggling of  
Randy Cabral,  
in this exclusive adult  
cabaret style show.

*Fathoms (18+),  
Deck 3, Forward  
10:15 pm*

## YOUTH ACTIVITIES OPEN HOUSE

Open House is an opportunity for all to come and participate in a variety of exciting activities and free time in the Oceaneer Club, Oceaneer Lab, it's a small world nursery, Vibe and Edge throughout the cruise. During these times secured programming will still be offered in the other venue for those looking to check their children into care.

Edge: 10:30 am - 12:00 pm & 6:00 pm - 7:30 pm

Vibe: 12:00 pm - 1:30 pm & 7:00 pm - 8:30 pm

Disney's Oceaneer Club: 3:00 pm - 6:00 pm

Disney's Oceaneer Lab: 11:00 am - 1:00 pm



# MORE TO ENJOY WHILE ONBOARD

## ALASKA AWAITS

Take your family on an Alaskan adventure they'll never forget! Sail through magnificent fjords fed by glaciers. Discover untamed nature and walk in the footsteps of prospectors. Begin your adventure today! Visit the Onboard Sales Desk to learn more about our special onboard booking offer.



## DISNEY VACATION CLUB

Visit the Disney Vacation Club information desk and ask us about show times where you will learn how to turn every vacation into the vacation of a lifetime.

## PORT & SHOPPING INFORMATION

Today is shopping day! Meet your Shopping Guide, Gemma at store #1, Diamonds International for the "Diamonds for Breakfast" Shopping Party from 9:00 am - 11:00 am and get 65% off diamond studs. Don't forget to pick up your coupons & FREE charm bracelet!



Deck 9, Forward - Phone : 7-1465

## PAMPER PACKAGE

\*50 minute Full Body Massage \*Foot and Ankle Massage  
\*Indian Scalp Massage \*25 Minute Booster Facial  
Only \$149

## SOPHIA FIORI DIAMOND TRUNK SHOW

Dazzling Diamonds,  
Tantalizing Tanzanite and  
many other Jewels.

## WHITECAPS

Deck 4, Forward



## PHOTOBOOK

Create a personalized story book of your Disney Cruise. Please create your PhotoBook on a daily basis in Shutters Deck 4, Aft. All orders need to be placed by 7:00 pm on the last night of the cruise.

## Connect @ Sea

Kindly be advised that after 10:00 pm tomorrow, new Internet packages will not be available for purchase. Available megabytes from existing packages can continue to be used until the moment of disembarkation.

## EARLY FLIGHT INFORMATION

Should you have a flight out of the San Juan airport prior to 11:30 am on debarkation morning kindly bring your airline tickets to Guest Services on Deck 3, Midship, for additional information and assistance.

## TRANSPORTATION INFORMATION

Should you wish to purchase transportation to the San Juan airport, kindly proceed to Guest Services on Deck 3, Midship, for further assistance.



Welcome to the port of St John's, Antigua!

Please check your Port Adventures tickets for your meeting times and locations. Ask our friendly team at the Port Adventures Desk for availability on one of our many tours still available. The Antigua Zipline Tour, Bird Island and Stingray Swim, or maybe a Reef Riding Adventure. All these and more are available at Port Adventures Desk located on Deck 3, Midship.

## SHOPPING

### O'GILLS PUB MERCHANDISE

Visit Sea Treasures where you'll find our new collection of O'Gills Pub products including branded shirts. While at Sea Treasures, check out the new and fun label shirts featuring Grumpy, Pluto, and Steamboat Willie. Deck 3, Forward.

### QUALITY SPIRITS

Visit Sea Treasures, Deck 3, Forward to find an incredible collection of high-end spirits. Impress your friends by bringing home a Louis XIII or Richard Hennessy.

### STYLISH JEWELRY AT WHITE CAPS

On a budget but still in need of some bling? Stop by White Caps today where you'll find a wide selection of stylish jewelry from popular brands such as Fossil and Alex and Ani. Deck 4, Forward.

### CHAMILIA EXCLUSIVE!

Remember your Disney Cruise forever! Disney Cruise Line charms, available in White Caps, Deck 4, Forward.

### H2O BATH COLLECTION

Treat yourself to the ultimate indulgence with H2O bath products. H2O offers shampoo, conditioner, lip balm, hydrating body lotion and after sun care. Available in White Caps, Deck 4, Forward.

### NIKE APPAREL

Nike performance apparel created for Disney Cruise Line available in White Caps, Deck 4, Forward.

### CAPTAIN'S SIGNING

Stop by White Caps at 7:15 pm to meet the Master of the Disney Magic and have your cruise mementos signed! Stunning replica ships are available in White Caps, Deck 4, Forward. Beautiful Disney Cruise Line® prints are available in the Vista Gallery, Deck 4, Midship.

Due to port regulations, when the ship is docked, the stores will remain closed.

## IMPORTANT INFORMATION

### Security Notice

All Guests (including Children) who wish to disembark or embark the ship are required to present their Key to the World card at the gangway. A photo ID is also required for those Guests who are 18 years of age or older. Guests under the age of 18 are required to have a parent, guardian or other responsible adult sign an authorization form at the Guest Service Desk if they wish to go ashore unaccompanied or with any adult from another stateroom.

### Sunscreen/Insect Repellent Advisory

Use sunscreen first and protect against mosquito bites and related illnesses by applying insect repellent on top of sunscreen when going ashore. Insect repellent is available for purchase in White Caps.

### Cold and Flu Reminder

Please wash hands frequently and thoroughly, particularly before meals. Contact the Health Center by dialing 7-1923, should anyone in your party become ill.

### Inclement Weather

For the safety of all Guests, outdoor events may be changed due to unforeseen weather conditions.

### Corridor Quiet Hours

As a courtesy to all our Guests, please recognize quiet hallway hours from 10:00 p.m. to 8:00 a.m.

### Environmental Message

With Disney's commitment to the Environment please refrain from throwing anything over the Ship's side. Thank you.

### No Reserved Seats Policy

As a courtesy to all Guests we kindly advise that the saving of seats is not permitted in the Walt Disney Theatre, and the saving of the sun loungers is not permitted on Deck 9 and 10. Items left unattended will be returned to lost and found at Guest Services, Deck 3, Midship.

### Smoking

For the comfort of our guests, the following areas are designated as smoking areas:  
• Deck 10 Forward, Starboard Side  
• Deck 9, Forward, Starboard Side at Quiet Cove  
• Deck 4, Starboard Side from 6:00 p.m. to 6:00 a.m. only (all of Deck 4 is non-smoking from 6:00 a.m. to 6:00 p.m.)  
Smoking is prohibited inside all guest staterooms and on stateroom verandahs. Guests found smoking in their staterooms or on their verandahs will be charged a \$250 stateroom recovery fee.

### Walt Disney Theatre

Theatrical performances may use artificial fog, strobe lights, pyrotechnics and other special effects. For the safety of our performers and the comfort of those around you, the use of any photography or video recording device or any electronic equipment is prohibited.

### Verandah Safety

Please do not leave any combustible materials on your balcony when not present in your stateroom for safety reasons.



Morning	8:30	8:45	9:00	9:15	9:30	9:45	10:00	10:15	10:30	10:45	11:00	11:15	11:30	11:45	12:00	12:15	12:30	12:45	1:00	1:15	1:30	
FUNNEL VISION	The Hunchback of Notre Dame (G) Funnel Vision						Finding Nemo (G) Funnel Vision						The Little Mermaid (G) - en Español Funnel Vision									
BUENA VISTA THEATRE	The Hundred-Foot Journey (PG)  Open Captioning Duration: 2 Hours 2 Minutes										Alexander...Very Bad Day (PG) Duration: 1 Hour 21 Minutes					Guardians of the Galaxy (PG-13) Duration: 2 Hours 2 Minutes						
CHARACTERS	Daisy Lobby Atrium (P)		Pluto Lobby Atrium (P)																			
	Donald Lobby Atrium (P)																					
FUN FOR ALL AGES											Wii Challenge Disney's Oceaneer Lab					Xbox: Disney Infinity (10+) O'Gills Pub					Crafts: Buttons O'Gills Pub	
																Craft Corner Disney's Oceaneer Lab						
ADULTS	Friends of Bill W. Keys																					
	Yoga Senses Spa Fitness Center		Group Cycling Senses Spa Fitness Center																			
VIBE 14-17 YEARS OLD															Youth Activities Open House							
EDGE 11-14 YEARS OLD									Youth Activities Open House						Trivia Challenge				Craft Corner			
OCEANEER LAB 3-12 YEARS OLD											Youth Activities Open House								Lunch			
OCEANEER CLUB 3-12 YEARS OLD						Game Challenge		Memory Wall		Become Iron Man!		Craft Corner		Scavenger Hunt								

Afternoon	1:45	2:00	2:15	2:30	2:45	3:00	3:15	3:30	3:45	4:00	4:15	4:30	4:45	5:00	5:15	5:30	5:45	6:00	6:15	6:30	6:45
FUNNEL VISION	Tinker Bell (G) Funnel Vision					Dumbo (G) Funnel Vision					Pocahontas (G) Funnel Vision					Cars 2 (G) Funnel Vision					
BUENA VISTA THEATRE	Maleficent (PG) - en Español Duration: 1 Hour 37 Minutes										Guardians of the Galaxy (PG-13)  DOLBY 3D Duration: 2 Hours 2 Minutes										
CHARACTERS	Mickey Gazebo			Goofy Gazebo			Donald Lobby Atrium (P)			Minnie Lobby Atrium (P)			Goofy Lobby Atrium (P)								
					Pluto Gazebo																
FUN FOR ALL AGES	Pictionary Challenge Promenade Lounge				Xbox: Family Feud Promenade Lounge				Bingo Pre-Sales		Mega Raffle Jackpot Fathoms			Become Iron Man! Disney's Oceaneer Club				 The Dream Goes On Walt Disney Theatre			
					Halloween Crafts Disney's Oceaneer Club				Toddler Time Promenade Lounge		Once Upon a Time Disney's Oceaneer Club		Live Music with Rob Sanders Promenade Lounge								
					Game Show: The Wheel O'Gills Pub				Art of The Theme Show Tour Palo				Back Pain Solutions Senses Spa & Salon		Club 18*21 - Social Cove Cafe		Rob Sanders LIVE Keys				
ADULTS																					
VIBE 14-17 YEARS OLD	Wii Challenge				Craft Corner				Soccer				Gender Wars								
EDGE 11-14 YEARS OLD	Scavenger Hunt				Soccer								Brains and Brawns				Youth Activities Open House				
OCEANEER LAB 3-12 YEARS OLD	Super Sloppy Science										Pinata Party				Dinner						
OCEANEER CLUB 3-12 YEARS OLD	Dress Up Fun				Youth Activities Open House																
					Halloween Crafts				Face Paint Time				Once Upon a Time		Become Iron Man!						

Evening	7:00	7:15	7:30	7:45	8:00	8:15	8:30	8:45	9:00	9:15	9:30	9:45	10:00	10:15	10:30	10:45	11:00	11:15	11:30	11:45	12:00			
FUNNEL VISION	Brother Bear (G) Funnel Vision												Remember the Titans (PG) Funnel Vision											
BUENA VISTA THEATRE	Guardians of the Galaxy (PG-13)  DOLBY 3D Duration: 2 Hours 2 Minutes												Captain America: The Winter Soldier (PG-13)  DOLBY 3D Duration: 2 Hours 16 Minutes											
CHARACTERS	Goofy <small>Lobby Atrium (P)</small>												Goofy <small>Lobby Atrium (P)</small>				Goofy <small>Lobby Atrium (P)</small>							
	Mickey <small>Dk 4, Mid</small>																Mickey <small>Lobby Atrium (P)</small>							
FUN FOR ALL AGES																								
		Captain's Signing <small>White Caps</small>	The Pumpkin Tree <small>Lobby Atrium</small>	Family Variety: Magic Dave <small>Fathoms</small>									So You Think You Know Your Family? <small>D Lounge</small>											
				So You Think You Know Your Family? <small>D Lounge</small>																				

Symbol for activities that will be repeated during the cruise



FOLD

Fold along the dotted lines and take me with you so you don't miss any of the fun!

FOLD

IN THE SPOTLIGHT SERIES

SOAVE IT! SERIES

WALT DISNEY THEATRE

WALT DISNEY THEATRE

WALT DISNEY THEATRE

WALT DISNEY THEATRE

WALT DISNEY THEATRE

WALT DISNEY THEATRE

WALT DISNEY THEATRE

WALT DISNEY THEATRE

WALT DISNEY THEATRE

WALT DISNEY THEATRE



THURSDAY, OCTOBER 16, 2014 - ST. JOHN'S, ANTIGUA

# BUENA VISTA THEATRE

Deck 5, Aft

en Español

DOLBY 3D

DOLBY 3D

Open Captioning



8:30 am Duration: 2 hrs 2 mins Rating: PG	11:00 am Duration: 1 hr 21 mins Rating: PG	12:45 pm Duration: 2 hrs 2 mins Rating: PG-13	3:15 pm Duration: 1 hr 37 mins Rating: PG	5:30 pm & 8:00 pm Duration: 2 hrs 2 mins Rating: PG-13	10:30 pm Duration: 2 hrs 16 mins Rating: PG-13
--	---	--	--	--	---

## Character Appearances

### DAISY DUCK

Lobby Atrium (P)  
9:00 am

### DONALD DUCK

Lobby Atrium (P)  
9:30 am & 4:00 pm

### PLUTO

Lobby Atrium (P)  
10:00 am  
Gazebo - 3:00 pm

### MICKEY MOUSE

Gazebo - 2:30 pm  
Deck 4, Midship  
8:15 pm  
Lobby Atrium (P)  
10:30 pm

### GOOFY

Gazebo - 3:30 pm  
Lobby Atrium (P)  
5:00 pm, 7:45 pm,  
10:00 pm & 11:00 pm

### MINNIE MOUSE

Lobby Atrium (P)  
4:30 pm



(P) - Portside, (S) - Starboard Side

Don't forget your Camera to capture those Magical Moments!

Check here each day for Character appearances.

For detailed Character appearance information  
see the Character Information Board in the Lobby Atrium.

Meet-and-Greets will be advertised for the length of time the line will be open. To avoid disappointment, please meet at start time of appearances.

## YOUTH ACTIVITIES THEMED EXPERIENCES

### CLUBHOUSE SERIES

focuses on movement and features content which appeals to younger children.

### STORYBOOK SERIES

is designed with a strong connection to the Disney classic stories.

### JUMP UP! SERIES

includes large group games & movement-oriented activities.

### CREATE & INVENT SERIES

will have a tactile focus allowing children to create and admire their work.

### IN THE SPOTLIGHT SERIES

focuses on children's stage presence with lots of activities and enthusiasm.

### SOLVE IT! SERIES

are less active, but will challenge children with problem/ solutions-based activities.

### YOUTH ACTIVITIES OPEN HOUSE

Activities for families, adults and children of all ages to enjoy together.

## SHIP DIRECTORY

### YOUTH ACTIVITIES

DISNEY'S OCEANEER CLUB	DECK 5, MID	7:30 AM - 11:00 PM
DISNEY'S OCEANEER LAB	DECK 5, MID	11:00 AM - 12:00 PM
EDGE	DECK 2, MID	10:30 AM - 1:00 PM
IT'S A SMALL WORLD NURSERY	DECK 5, AFT	7:30 AM - 11:00 PM
VIBE	DECK 10, MID	12:00 PM - 12:00 AM

### POOLS

\*Children under 12 years of age must have adult supervision in all pools.

AQUADUNK	DECK 10, MID	1:00 PM - 8:30 PM
AQUALAB	DECK 9, AFT	9:00 AM - 10:00 PM
GOOFY'S POOL	DECK 9, MID	9:00 AM - 6:00 PM
		8:00 PM - 10:00 PM
NEPHEWS' SPLASH ZONE	DECK 9, AFT	9:00 AM - 6:00 PM
QUIET COVE POOL (18+)	DECK 9, FWD	6:00 AM - 10:00 PM
TWIST 'N' SPOUT	DECK 9, AFT	12:00 PM - 9:00 PM

Complimentary pool vests are available for children to use in the pools onboard.  
They are located on the pool deck.

### RECREATION

PORT ADVENTURES DESK	DECK 3, MID	7:30 AM - 10:00 AM
		7:00 PM - 8:30 PM
SENSES FITNESS CENTER (18+)	DECK 9, FWD	6:30 AM - 10:00 PM
WIDE WORLD OF SPORTS DECK	DECK 10, FWD	24 HOURS

### GENERAL INFORMATION

BUENA VISTA THEATRE	DECK 5, AFT	SHOWTIMES
DISNEY VACATION CLUB DESK	DECK 4, MID	5:00 PM - 10:00 PM
ONBOARD SALES DESK	DECK 4, MID	8:30 AM - 9:30 AM
		4:00 PM - 6:00 PM
		7:30 PM - 8:30 PM
		9:30 PM - 10:30 PM

FUNNEL VISION	DECK 9, MID	SHOWTIMES
GUEST SERVICES	DECK 3, MID	24 HOURS
HAIR BRAIDING	DECK 9, MID	4:00 PM - 6:00 PM
		7:00 PM - 10:00 PM
MEDICAL HEALTH CENTER	DECK 1, FWD	9:30 AM - 11:00 AM
		4:30 PM - 7:00 PM
PORT & SHOPPING DESK	DECK 3, MID	7:00 PM - 9:00 PM
PRELUDES	DECK 4, FWD	5:30 PM - 9:00 PM
QUARTER MASTERS (ARCADE)	DECK 9, MID	24 HOURS
SENSES SPA AND SALON	DECK 9, FWD	8:00 AM - 10:00 PM
SHUTTERS PHOTO GALLERY	DECK 4, AFT	5:00 PM - 11:00 PM
WALT DISNEY THEATRE	DECK 4, FWD	SHOWTIMES

### SHOPPING

MICKEY'S MAINSAIL	DECK 4, FWD	5:30 PM - 11:00 PM
QUACKS	DECK 9, MID	
SEA TREASURES	DECK 3, FWD	5:30 PM - 11:00 PM
VISTA GALLERY	DECK 4, MID	6:00 PM - 10:00 PM
WHITE CAPS	DECK 4, FWD	5:30 PM - 11:00 PM

## IMPORTANT NUMBERS

Fire/Security: 7-3001  
Medical EMERGENCY: 7-3000  
Health Center: 7-1923

## DINNER MENU

Animator's Palate : Captains Gala  
Carioca's : Captains Gala  
Lumiere's : Captains Gala

## DRINK OF THE DAY

High Tide  
(Alcoholic)  
Passion Cream Freeze  
(Non-Alcoholic)

## WEATHER FORECAST

Today: Cloudy  
High: 84°F/29°C  
Tomorrow: Cloudy  
High: 84°F/29°C

Evening Attire: Semi Formal

## DINING & LOUNGES

### BREAKFAST

CABANAS	DECK 9, AFT	6:30 AM - 11:30 AM
DAISY'S DE LITES	DECK 9, AFT	6:00 AM - 8:15 AM
LUMIERE'S (A-LA CARTE)	DECK 3, MID	8:00 AM - 9:30 AM

### LUNCH

CABANAS	DECK 9, AFT	11:30 AM - 2:00 PM
DAISY'S DE LITES	DECK 9, AFT	11:00 AM - 6:00 PM
LUMIERE'S (A-LA CARTE)	DECK 3, MID	12:00 PM - 1:30 PM
PETE'S BOILER BITES	DECK 9, AFT	11:00 AM - 6:00 PM
PINOCCHIO'S PIZZERIA	DECK 9, MID	11:00 AM - 6:00 PM

### DINNER

ANIMATOR'S PALATE	DECK 4, AFT	5:45 PM & 8:15 PM
CABANAS TABLE SERVICE	DECK 9, AFT	6:30 PM - 8:30 PM
CARIOCA'S	DECK 3, AFT	5:45 PM & 8:15 PM
LUMIERE'S	DECK 3, MID	5:45 PM & 8:15 PM
PALO (FOR RESERVATIONS CALL 7-6843)	DECK 10, AFT	6:00 PM - 8:30 PM
PETE'S BOILER BITES	DECK 9, AFT	6:00 PM - 10:00 PM

### LATE NIGHT SNACKS

O'GILLS PUB	DECK 3, FWD	10:45 PM - 11:45 PM
PINOCCHIO'S PIZZERIA	DECK 9, MID	9:30 PM - 12:00 AM
PROMENADE LOUNGE	DECK 3, AFT	10:45 PM - 11:45 PM

### ADDED FEATURES

EYE SCREAM	DECK 9, AFT	11:00 AM - 11:00 PM
BEVERAGE STATION	DECK 9, AFT	24 HOURS
ROOM SERVICE	DIAL 7-4330	24 HOURS

### ENTERTAINMENT - LOUNGES - BARS

Adults must be 21 and older to consume alcoholic beverages.

AFTER HOURS	DECK 3, FWD	(AFTER 9:00 PM. ADULTS ONLY)
COVE CAFE (18+)	DECK 9, MID	6:30 AM - 12:00 AM
D LOUNGE	DECK 4, MID	SHOWTIMES
FATHOMS (18+)	DECK 3, FWD	7:00 PM - 2:00 AM
FROZONE TREATS	DECK 9, AFT	10:30 AM - 6:00 PM
INTERNET CAFE	DECK 3, AFT	24 HOURS
KEYS (18+)	DECK 3, FWD	5:30 PM - 12:30 AM
O'GILLS PUB (18+)	DECK 3, FWD	3:00 PM - 12:30 AM
PRELUDES	DECK 4, FWD	5:30 PM - 9:00 PM
PROMENADE LOUNGE	DECK 3, AFT	9:00 AM - 12:30 AM
PINOCCHIO'S PIZZERIA	DECK 9, MID	9:30 AM - 12:00 AM
SIGNALS (18+)	DECK 9, FWD	10:00 AM - 12:00 AM

Public Health Advisory: Consuming raw or undercooked meats, poultry, seafood, shellfish, or eggs may increase your risk for foodborne illness, especially if you have certain medical condition.

All Ashore: Approx. 7:00 am

All Aboard: 4:45 pm

Ship's Agent In Antigua

Winston Thomas  
Assistant Operation Supervisor - Brysons Shipping  
Desk tel: 1-268-480-1251  
Cell: 1-268-764-8018