

# PERSONAL NAVIGATOR

MONDAY, SEPTEMBER 8, 2014

Sunrise: 6:23 am Sunset: 6:33 pm  
Evening Attire: Cruise Casual

Today: Partly Cloudy High: 80°F/27°C  
Tomorrow: Partly Cloudy High: 80°F/27°C

DAY AT SEA

## Disney WISHES

On the eve of their graduation, three best friends go on a magical journey down the wishing well. A host of Disney characters help them discover the connection between children who are becoming adults, and adults who stay in touch with being a kid at heart.

**WALT DISNEY THEATRE**  
**DECK 3 & 4, FORWARD**  
6:15 pm & 8:30 pm



As a courtesy to all Guests, we kindly advise that the saving of seats is not permitted in the Walt Disney Theatre.



Assistance available at the entrance to the Walt Disney Theatre 30 minutes prior to show time.



## Disney FANTASY Fun Facts

The two huge mosaic walls based on the Disney-Pixar animated feature "Finding Nemo" are showcased in Cabanas casual- Dining restaurant on Deck 11. Created for the Disney Fantasy by Italian artists, each wall is more than 25 feet wide and more than 8 feet high and contains approximately 194,500 tiles in 200 colors of hand-crafted Venetian enamel.

A team of nine artists created the mosaics based on Disney-Pixar designs depicting the underwater world of Australia's Great Barrier Reef and characters featured in the motion picture.

Sips, sights and sounds of the diverse cities, countries and culture of Europe - that's what's in store. All in one evening and all in one place - aboard the Disney Fantasy! The adult nightlife neighborhood, Europa, aboard the ship features five clubs and lounges that treat the senses to a taste of Ireland, England, France and Italy. Plus, stunning skylines and signature 'sips' of Russia, Greece, Hungary and Spain.

## THE NIGHTMARE BEFORE CHRISTMAS

### SING AND SCREAM

#### HALLOWEEN MOVIE SPECIAL

You're invited to a special presentation of Tim Burton's popular classic, presented in 3-D. Featuring state-of-the-art projection, sound and in-theatre effects, you become part of the experience. You never know who may show up.

**Walt Disney Theatre, (PG)**  
**Deck 3 & 4, Forward,**  
**10:30 pm**

## Don't Miss:

### Disney Animation: Cartoon Physics

*D Lounge, Deck 4, Midship - 9:45 am & 12:00 pm*

Go behind the scenes at Walt Disney Animation Studios and see how flat drawings and pencil lines can come to life through basic techniques such as "Stretch and Squash", and create your own "bouncing ball" animation exercise in this entertaining and fun enrichment program.

### Disney's Behind the Scenes: Diego Parras

*Buena Vista Theatre, Deck 4 & 5, Forward - 2:00 pm*

Join us for an exclusive, in-depth look at the creation of the Seven Dwarfs Mine Train and how it is the latest example of how Walt Disney's classic film "Snow White and the Seven Dwarfs" has been brought-to-life to Magic Kingdom Park. The Seven Dwarfs Mine Train is a rocking, rollicking coaster that immerses guests in the lovable world of Sleepy, Doc, Grumpy, Bashful, Sneezy, Happy and Dopey.

### Anyone Can Cook - Turkey Potstickers (18+)

*D Lounge, Deck 4, Midship - 2:15 pm*

Join our Guest Chef, Chef Gina Greene as she shows you how to prepare a delicious dish. Today's menu - Turkey Potstickers.



### Sport's Simulators

Digital sports simulators are available at Goofy's Sports Deck on Deck 13, Aft. This state-of-the-art virtual sports experience includes golf, basketball, baseball, hockey, football and soccer. Book now at the Port Adventures desk, Deck 5, Midship.

## DINNER MENU

Animator's Palate: Pacific Rim Cuisine  
Enchanted Garden: Continental Market Cuisine  
Royal Court: French Cuisine

## DRINK OF THE DAY

Yellow Bird (Alcoholic)  
Lava Smoothie (Non Alcoholic)

## IMPORTANT NUMBERS

Fire/Security: 7-3001  
Medical Emergency: 7-3000  
Health Center: 7-1923



# ADULT ACTIVITY HIGHLIGHTS

## SENSES SPA FITNESS CLASSES & SEMINARS

*Sunrise Stretch* - Donald's Pool - 7:00 am  
*Fab Abs* - Donald's Pool - 7:30 am  
*Complimentary Footprint Analysis* - Senses Spa & Salon - 8:00 am  
*Body Sculpt Boot Camp* (Nom. Fee) - Senses Fitness Center - 9:00 am  
*How to Increase Your Metabolism* - Senses Spa & Salon - 10:00 am  
*Detox for Health & Weight Loss* - Senses Spa & Salon - 11:00 am  
*Back Pain Solutions* - Senses Spa & Salon - 2:00 pm  
*Group Cycling* - Senses Fitness Center - 4:00 pm  
*Fitness Frenzy* (13-17, Nom. Fee) - Senses Fitness Center - 7:00 pm



## TASTING CLASSES

*Chocolate & Liquor Tasting* (21+) - Ooh La La - 12:15 pm  
*Rum Tasting* (21+) - Meridian - 1:00 pm  
*Mixology* (21+) - Skyline - 2:00 pm & 4:00 pm; Meridian - 3:00 pm  
*Tequila & Margarita Tasting* (21+) - Ooh La La - 4:30 pm  
*Whiskey Tasting* (21+) - Cove Cafe - 10:00 pm  
*Cognac Tasting* (21+) - Meridian - 10:30 pm  
 Please make reservations for tastings at Guest Services for a nominal fee.  
 Tasting Seminars are only for Guests 21 and older.

## CLUB 18\*21 - LUNCH

*Royal Court, Deck 3, Midship - 12:15 pm*  
 Get to know your fellow 18\*21 Guests over a spot of lunch.



## CLUB 18\*21 - XBOX KINECT CHALLENGE

*O'Gills Pub, Deck 4, Aft - 3:30 pm*  
 Take on the challenge in this fun active computer game

## CLUB 18\*21 - MIXER

*The Tube, Deck 4, Aft - 9:45 pm*  
 Come join fellow cruisers your own age at our exclusive Club 18\*21 event.

## ART OF THE THEME SHOW TOUR

*Meridian, Deck 12, Aft - 9:30 am*  
 Join us on a guided ship tour and discover the key ingredients that make the Disney Fantasy cruise ship one-of-a-kind.

## ICE BREAKERS

*The Tube, Deck 4, Aft - 10:00 pm*  
 Fancy some fun? Want to get to know your fellow Guests? Then join us as we break the ice in this fun filled game show



# FUN FOR ALL AGES HIGHLIGHTS



## JAKE & THE NEVERLAND PIRATES

*D Lounge, Deck 4, Midship - 9:00 am*  
 A'Ho! there mates, join us for an adventure in D Lounge with Jake and the Neverland Pirates.



## DISNEY ANIMATION: CARTOON PHYSICS

*D Lounge, Deck 4, Midship - 9:45 am & 12:00 pm*  
 Go behind the scenes at Walt Disney Animation Studios and see how flat drawings and pencil lines can come to life through basic techniques such as "Stretch and Squash", and create your own "bouncing ball" animation exercise in this entertaining and fun enrichment program.



## \$5,000 MEGA JACKPOT BINGO

*Bingo Pre-Sales start at 10:45 am*  
*D Lounge, Deck 4, Midship - 11:00 am*  
 It's Big! It's \$5,000 MEGA Jackpot Bingo! Take home \$5,000 if you can cover your card in 46 numbers or less. If not, we carry on to play for the biggest cash prize of the session, plus today's Disney Vacation Club sponsored raffle includes a \$100 Onboard Credit and prize-packs. Pre-Sales start 15 minutes prior to the game.



## DISNEY CHANNEL ON DECK

*Funnel Vision, Deck 11, Midship - 12:30 pm*  
 Don't change that channel! It's time for a Disney Channel afternoon poolside! Your Cruise Staff will host an exciting day of games and contests in between your favorite Disney Channel shows! So sit back, relax, and enjoy the sun!

## DIAMOND AND GEMSTONE SEMINAR

*The Tube, Deck 4, Aft - 2:00 pm*  
 Join your Port and Shopping Guide, and become an educated shopper. He will teach you about the exotic gemstones found in the Caribbean. FREE Tanzanite earrings for all who attend and a raffle to win a gemstone pendant!



## SENSES SPA BINGO

*Bingo Pre-Sales start at 4:00 pm*  
*D Lounge, Deck 4, Midship - 4:15 pm*  
 Four CASH prizes to be won! Plus great spa prizes that will pamper you, including a mini facial and massages all courtesy of the Senses Spa and Salon. Serenity now! Pre-Sales start 15 minutes prior to the game.

## PLAYHOUSE D LOUNGE

*D Lounge, Deck 4, Midship - 5:15 pm*  
 Calling our youngest of cruisers! Here is a special playtime that is just for you. Come meet new friends; and join in on the fun as your Cruise Staff team takes you through interactive activities made just for you!

## OFFICER PIN TRADING

*Prehudes, Deck 3, Forward - 7:15 pm*  
 Come trade pins with the Officers of the Disney Fantasy.

## FAMILY SUPERSTAR KARAOKE

*D Lounge, Deck 4, Midship - 10:45 pm*  
 Join your Cruise Staff in D Lounge tonight and sing along to your favorite song - fun for everyone.



# YOUTH ACTIVITIES HIGHLIGHTS

## DINE & PLAY

A convenience for families dining at 8:15 pm, our Youth Activities counselors will be available at 9:15 pm at the entrance of Royal Court, Enchanted Garden and Animator's Palate dining rooms to bring registered children to join the fun in the Youth Activity areas.



Deck 5, Midship (7-5864) 9:00 am - 11:30 pm

## OPEN HOUSE

8:00 am - 9:00 am

Your chance to see our toddler space, it's a small world nursery.



Deck 5, Midship (7-1440)  
(3-12 years old) 9:00 am - 12:00 am

## LITTLE EINSTEIN'S ADVENTURE

11:00 am

Your junior cruisers will have the time of their lives with this program inspired by their favorite show with fun activities guaranteed to make them feel like a little genius!

## MAGIC PLAYFLOOR

8:45 pm

Explore the latest technology of the Disney's Oceaneer Club Magic PlayFloor.



Deck 5, Midship (7-1445)  
(3-12 years old) 9:00 am - 12:00 am

## PISTON CUP CHALLENGE

10:30 am

It's Dinoco time and you're part of the pit crew! Design your own race car and see if you've got what it takes to end up in the winner's circle!

## DISNEY ANIMATION: CREATING A CHARACTER

4:00 pm

Go behind the scenes at Walt Disney Animation Studios as Walt Disney himself talks about his most famous characters, then learn the basic techniques of drawing Mickey and Donald in this fun and interesting enrichment program.



Deck 13, Midship (7-9743)  
(11-14 years old) 9:00 am - 1:00 pm

## ANYONE CAN COOK: PIZZA

3:30 pm

Anyone can cook as we work together to create some of our favorite treats. From our galley to yours, join our chef as they show you how to create pizza!

## ESPN DREAM TEAM DRAFT DAY - FOOTBALL

7:30 pm

Join the "Commissioner" and engage in this interactive fantasy football draft unlike anything you've ever seen! Can YOU draft the greatest football team of all-time?



Entrance on Deck 4, Forward (7-9418)  
(14-17 years old) 9:00 am - 2:00 am

## PUMP IT UP

9:00 pm

Join us in the Fitness Center for a Teen Only workout. Meet in Vibe to join in!

## CROWNING OF THE COUCH POTATO

10:00 pm

Do you think you know your movies, TV and commercials? Well it's time to test your knowledge on all the recent releases.

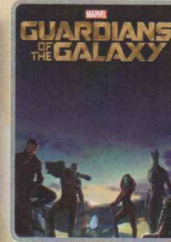
# BUENA VISTA THEATRE

Deck 4 & 5, Midship  
Today's Movies

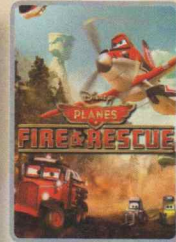
DOLBY 3D



8:30 am  
Duration:  
1 hr 25 mins  
Rating: G

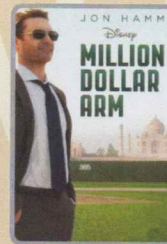


10:30 am  
Duration:  
2 hrs 2 mins  
Rating: PG-13



3:15 pm  
Duration:  
1 hr 23 mins  
Rating: PG

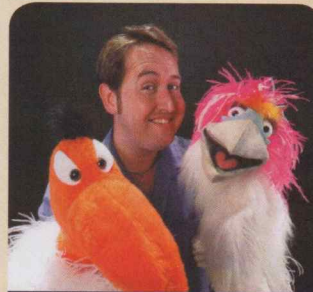
DOLBY 3D



5:30 pm & 8:30 pm  
Duration: 2 hrs 4 mins  
Rating: PG



11:00 pm  
Duration: 1 hr 37 mins  
Rating: PG



## FAMILY VARIETY ACT

Featuring the  
Comedy & Ventriloquism  
of Kevin Johnson,  
as he entertains the  
entire family in this  
fun-filled show.

*The Tube,*  
Deck 4, Aft,  
7:30 pm



## ADULT VARIETY ACT

Featuring the  
Comedy & Juggling  
of Michael Holly,  
as he entertains you in this  
adult exclusive show.

*The Tube (18+),*  
Deck 4, Aft,  
10:30 pm

## YOUTH ACTIVITIES OPEN HOUSE

Open House is an opportunity for all to come and participate in a variety of exciting activities and free time in the Oceaneer Club, Oceaneer Lab, it's a small world nursery, Vibe and Edge throughout the cruise. During these times secured programming will still be offered in the other venue for those looking to check their children into care.

Disney's Oceaneer Club: 9:00 am - 10:30 am

Disney's Oceaneer Lab: 5:00 pm - 6:30 pm

Edge: 9:00 am - 10:00 am & 5:00 pm - 6:30 pm

Vibe: 9:00 am - 10:30 am & 6:30 pm - 8:30 pm



# MORE TO ENJOY WHILE ONBOARD



## MORE MAGIC IN EUROPE

Set sail for Europe! Whether you choose the Mediterranean or Northern Europe, you're sure to experience a magical voyage of culture with amazing family adventures - begin your journey today! Visit the Onboard Sales desk to learn more about our special onboard booking offer.



## DISNEY VACATION CLUB® GROUP PREVIEW

Want to learn more about taking magical vacations year after year? Please see a Disney Vacation Club representative on Deck 4, Midship, or call 7-2805 from your stateroom phone for more information about our interactive group presentation.



## PORT AND SHOPPING INFORMATION

Join Johan your shopping guide to learn the difference between a \$10 watch & a \$100,000 watch at the fine watch seminar, then at the diamond and gemstone seminar he will give you insider tips on shopping for gemstones in the Caribbean. FREE Tanzanite earrings & a raffle to win a Tanzanite pendant for all in attendance. Fine Watch Seminar, La Piazza, Decks 4, Aft - 11:45 am. Diamond & Gemstone Seminar, The Tube, Deck 4, Aft at 2:00 pm.



**SENSES**  
SPA & SALON

## ELEMIS OXYDERMIE FACIAL

Give your skin what it has been craving. Now you can fight lines, wrinkles, spots and get the radiant glow that's been eluding you. Let us pamper your skin with our new cutting-edge technology that brings Microdermabrasion and oxygen together in one luxurious treatment.

50 minutes for \$169

## ATLANTIS GEMS

Atlantis Gems invites you to look at the imaginative creations of Morganite and Zultanite when you visit White Caps. Discover the jewelry piece that best suits your style! Deck 3, Forward.



WHITE CAPS

**Shutters**

## GET THE PICTURE!

Ask our friendly photographers about "Get the Picture!" And get the incredible value of an unlimited digital photo package, which includes all of your stateroom photos.

Offer available per stateroom. Visit Shutters today as supplies are limited.

*\*Terms and conditions apply. The Photo Book is only available for purchase during this cruise.*

## ONBOARD AIRLINE CHECK IN

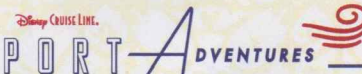
If you would like to have your boarding passes printed for you onboard and have your luggage taken to the airport for you, register before Wednesday. If you have a Disney Cruise Line airport transfer to Orlando International Airport and fly with one of the participating airlines, stop at Guest Services, Deck 3, Midship to register.

## Connect @ Sea

We are now offering a NEW and improved Internet service to stay connected on your cruise like no other in the industry! Internet packages range from \$0.25 per MB - \$89.00 (1000 MB package). For more information contact your Connect@Sea Expert or Guest Services onboard.

## FREE ON DEMAND TV

Watch Disney movies, Hollywood features and even captioned content, plus much more "On Demand" for FREE in the comfort of your stateroom! Bookmark your movie and come back to watch it later. Press MENU on your stateroom television remote control, and follow the prompts.



Tomorrow the two nation island of St. Maarten / St. Martin awaits us. Your knowledgeable Port Adventures team is standing by to answer all your questions about the best choices for you and your family. Enjoy the beautiful and magnificent Orient Bay beach or take a rip roaring ride on a RIB boat past the airport to the French side for some snorkeling. Visit the Port Adventures desk, Deck 5, Midship, for more information.

## SHOPPING

### THE PIRATES LEAGUE

Shiver me timbers! Pirates are invading the Bibbidi Bobbidi Boutique tomorrow and are looking to transform you into a swashbuckling pirate to join their crew. Make your reservations by visiting Bibbidi Bobbidi Boutique, Deck 5, Midship or dialing extension 7-9438. Limited space available.

### ATLANTIS GEMS PRESENTS ZULTANITE GEMSTONES

Recently discovered in the Anatolian mountains, Zultanite is a rare natural color changing gemstone that appears to be a graceful green by daylight and a charming champagne by candlelight. Stop by White Caps and ask about the unique Zultanite snowflake cut gemstone, one of the rarest gems in the open market. Deck 3, Forward.

### UNIQUE DISNEY ART AT THE VISTA GALLERY

Stop by the Vista Gallery to view original artwork by a variety of celebrated Disney artists featuring some of your favorite Disney characters. Also check out unique Disney art painted on original dessert plates from the Animator's Palate Restaurants on the Disney Magic® and Disney Wonder®. Created by popular Disney artists, Mark Seppala and Joe Kaminski, these one-of-a-kind plates are available exclusively on Disney Cruise Line® while supplies last.

### VERA BRADLEY BAGS AND ACCESSORIES

With their distinctive and colorful fabrics and trims, view our collection of Vera Bradley bags and accessories including the new Vera Bradley tote bags designed especially for Disney Cruise Line® available at White Caps. Deck 3, Forward.

### OFFICER PIN TRADING

Come and trade pins with the Officers of the Disney Fantasy® at 7:15 p.m. in Preludes, Deck 3, Forward.

DF012P 09-08-2014 ©DISNEY

## IMPORTANT INFORMATION

### Security Notice

All Guests (including children) who wish to disembark the ship are required to present their Key to the World card at the gangway. A photo ID is also required for those Guests who are 18 years of age or older. Guests under the age of 18 are required to have a parent, guardian or other responsible adult sign an authorization form at the Guest Service desk if they wish to go ashore unaccompanied or with any adult from another stateroom.

### Sunscreen/Insect Repellent Advisory

Use sunscreen first and protect against mosquito bites and related illnesses by applying insect repellent on top of sunscreen when going ashore. Insect repellent is available for purchase in White Caps.

### Cold and Flu Reminder

Please wash hands frequently and thoroughly, particularly before meals. Contact the Health Center by dialing 7-1923, should anyone in your party become ill.

### Corridor Quiet Hours

As a courtesy to all our Guests, please recognize quiet hallway hours from 10:00 pm til 8:00 am another stateroom.

### Inclement Weather

For the safety of all Guests, outdoor events may be changed due to unforeseen weather conditions.

### Environmental Message

With Disney's commitment to the Environment, please refrain from throwing anything over the Ship's side. Thank you!

### No Reserved Seats Policy

As a courtesy to all our Guests, we kindly advise that the saving of seats is not permitted in the Walt Disney Theatre, and the saving of the sun loungers is not permitted on Deck 11, 12, and 13. Items left unattended will be returned to lost and found at Guest Services, Deck 3 Midship.

### Smoking

For the comfort of our Guests, the following areas are designated as smoking areas:  
 \*Deck 13, forward, port side by Currents  
 \*Deck 12, aft, port side outdoor area that is accessible through the Meridian Lounge  
 \*Deck 4, aft, port side from 6:00 pm to 6:00 am only (all of Deck 4 is non-smoking from 6:00 am to 6:00 pm)  
 Smoking is prohibited inside all Guest staterooms and on stateroom verandahs. Guests found smoking in their staterooms or on their verandahs will be charged a \$250 stateroom recovery fee. Electronic cigarettes may only be used in designated smoking areas.

### Walt Disney Theatre

Theatrical performances may use artificial fog, strobe lights, pyrotechnics and other special effects. For the safety of our performers and the comfort of those around you, the use of any photography, video recording device or any electronic equipment is prohibited.

### Verandah Safety

Please do not leave any combustible materials on your balcony when not present in your stateroom for safety reasons.



Morning	8:30	8:45	9:00	9:15	9:30	9:45	10:00	10:15	10:30	10:45	11:00	11:15	11:30	11:45	12:00	12:15	12:30	12:45	1:00	1:15	1:30	
FUNNEL VISION	The Jungle Book (G) Funnel Vision						Mulan (G) Funnel Vision						Disney Channel on Deck Funnel Vision									
BUENA VISTA THEATRE	Disneyature: Bears (G) Duration: 1 Hour 25 Minutes						Guardians of the Galaxy (PG-13) <b>DOLBY 3D</b> Duration: 2 Hours 2 Minutes															
CHARACTERS	Doc McStuffins Dk 4, Balcony			Princess Gathering Lobby Atrium			Sofia Dk 4, Balcony			Sofia Dk 4, Balcony			Character Dance Party Lobby Atrium			Buzz Lobby Atrium (V)			Phineas & Ferb Lobby Atrium (H)			
FUN FOR ALL AGES	Toddler Time D Lounge		D Lounge 		Crafts: Memory Pages O'Gills Pub		Disney <b>ANIMATION Cartoon Physics</b> D Lounge		Bingo Pre-Sales		\$5,000 Mega Jackpot <b>BINGO</b> D Lounge		Disney <b>ANIMATION Cartoon Physics</b> D Lounge		Pictionary Challenge D Lounge		Disney Vacation Club Group Preview The Tube		Crafts: Origami Frogs La Piazza			
ADULTS	Friends of Bill W. Outlook		Art of The Theme Show Tour Meridian		Increase Your Metabolism Senses Spa & Salon		Crafts: Origami Hearts La Piazza		Detox for Health & Weight Loss Senses Spa & Salon		Watch Seminar La Piazza		Singles' Lunch Royal Court									
VIBE 14-17 YEARS OLD	Youth Activities Open House						Chillin' in Vibe						Gasses in Action		Sun Deck Fun							
EDGE 11-14 YEARS OLD	Youth Activities Open House						Cards Tournament		Disney Animation: Persistence of Vision		Karaoke		Game Challenge									
OCEANEER LAB 3-12 YEARS OLD	Magic PlayFloor						Piston Cup Challenge		Pictionary		Lunch				Craft Corner							
OCEANEER CLUB 3-12 YEARS OLD	Youth Activities Open House						Scavenger Hunt		Little Einstein's Adventure				Dress Up Fun		Journey to Neverland							
	Jake and the Neverland Pirates		Mickey's Puzzle Playtime																			

Afternoon	1:45	2:00	2:15	2:30	2:45	3:00	3:15	3:30	3:45	4:00	4:15	4:30	4:45	5:00	5:15	5:30	5:45	6:00	6:15	6:30	6:45	
FUNNEL VISION	Hercules (G) Funnel Vision						Tangled (PG) Funnel Vision															
BUENA VISTA THEATRE	Disney's Behind the Scenes: Diego Parras						Planes: Fire and Rescue (PG) Duration: 1 Hour 23 Minutes						Million Dollar Arm (PG) Duration: 2 Hours 4 Minutes									
CHARACTERS	Woody Lobby Atrium (V)		Phineas & Ferb Lobby Atrium (H)		Woody Lobby Atrium (V)		Mickey Dk 4, Balcony		Cinderella Lobby Atrium		Phineas & Ferb Lobby Atrium (H)		Minnie Dk 4, Balcony		Pinocchio Preludes		Rapunzel Preludes					
FUN FOR ALL AGES	Disney's Behind the Scenes: Diego Parras Buena Vista Theatre				Bingo Pre-Sales		<b>BINGO</b> D Lounge		Senses Spa La Piazza		Playhouse D Lounge D Lounge		Live Music with Andrea & Rafaela Lobby Atrium				Live Music with FireLites La Piazza					
ADULTS	70's Music Trivia O'Gills Pub		Anyone Can Cook - Turkey PotStickers D Lounge		David Kenny Live Deck 12, Forward		Club 18*21 - Xbox Kinect Challenge O'Gills Pub		Margarita Tasting (21+) Ooh! La La		Diamond and Gemstone Seminar The Tube		Know It All Trivia O'Gills Pub		Live Guitar with David Kenny Deck 12, Forward		Pub Quiz O'Gills Pub					
VIBE 14-17 YEARS OLD	Sun Deck Fun						ESPN Dream Team Draft Day - Basketball		Disney Animation: Persistence of Vision		Dive into DJ'ing		Cards Tournament		Open House							
EDGE 11-14 YEARS OLD	Brains and Brawns						Anyone Can Cook: Pizza		Youth Activities Open House		Disney Cruise Line Trivia											
OCEANEER LAB 3-12 YEARS OLD	Game Challenge						Disney Animation: Creating a Character		Youth Activities Open House		Pathfinders											
OCEANEER CLUB 3-12 YEARS OLD	Craft Corner		Super Sloppy Science		Relay Games		Craft Corner		Dinner		Parachute Games		Dress Up Fun									
	Memory Wall		Relay Games		Pathfinders		Once Upon a Time						Picture This									

Evening	7:00	7:15	7:30	7:45	8:00	8:15	8:30	8:45	9:00	9:15	9:30	9:45	10:00	10:15	10:30	10:45	11:00	11:15	11:30	11:45	12:00	
FUNNEL VISION	NFL: New York Giants vs. Detroit Lions Funnel Vision (Subject to satellite availability)												NFL: San Diego Chargers vs. Arizona Cardinals Funnel Vision (Subject to satellite availability)									
BUENA VISTA THEATRE	Million Dollar Arm (PG) Duration: 2 Hours 4 Minutes												Maleficent (PG) <b>DOLBY 3D</b> Duration: 1 Hour 37 Minutes									
CHARACTERS	Mickey Dk 4, Balcony		Phineas & Ferb Lobby Atrium (H)		Mickey Dk 4, Balcony		Minnie Dk 4, Balcony		Cinderella Lobby Atrium		Pluto Lobby Atrium		Pinocchio Preludes		Phineas & Ferb Lobby Atrium (H)		Rapunzel Preludes					
FUN FOR ALL AGES	Variety: Kevin Johnson The Tube				Disney Trivia D Lounge				Officer Pin Trading Preludes		Family Dance Party The Tube		Family Fusion D Lounge		Family Fusion D Lounge		Family Superstar Karaoke D Lounge					
ADULTS	NFL: New York Giants vs. Detroit Lions O'Gills Pub (Subject to satellite availability)		Pub Quiz O'Gills Pub		DJ Requests The Tube		Ice Breakers The Tube		The Physical Comedy of <b>MICHAEL HOLLY</b> The Tube		70's Remix with Club DJ Printz The Tube											
VIBE 14-17 YEARS OLD	Youth Activities Open House						Pump It Up		Crowning of the Couch Potato		Gender Wars											
EDGE 11-14 YEARS OLD	Disney Cruise Line Trivia		ESPN Dream Team Draft Day - Football		Game Challenge		Picture This		That's Hilarious		Gender Wars		Dance Party									
OCEANEER LAB 3-12 YEARS OLD	Pathfinders		Get the Hook		Game Challenge		Craft Corner		Super Sloppy Science				Magic PlayFloor									
OCEANEER CLUB 3-12 YEARS OLD	Craft Corner		Game Challenge		Magic PlayFloor		Pluto's Pajama Party		Movie Time													
	Big Top Fun Fest!																					

Symbol for activities that will be repeated during the cruise  
  
 Youth Activities Open House  
  
 FOLD  
 Fold along the dotted lines and take me with you so you don't miss any of the fun!  
 FOLD  
 IN THE SPOTLIGHT SERIES  
  
 SOLVE IT! SERIES  
  
 JUMP UP! SERIES  
  
 CREATE & INVENT SERIES  
  
 CLUBHOUSE SERIES  
  
 STORYBOOK SERIES



MONDAY, SEPTEMBER 8, 2014 - DAY AT SEA

# BUENA VISTA THEATRE

Deck 4 & 5, Midship

DOLBY 3D

DOLBY 3D



8:30 am  
Duration:  
1 hr 25 mins  
Rating: G



10:30 am  
Duration:  
2 hrs 2 mins  
Rating: PG-13



3:15 pm  
Duration:  
1 hr 23 mins  
Rating: PG



5:30 & 8:30 pm  
Duration:  
2 hrs 4 mins  
Rating: PG



11:00 pm  
Duration:  
1 hr 37 mins  
Rating: PG

## Character Appearances

### DOC MCSTUFFINS

Deck 4, Balcony  
9:15 am & 11:00 am

### PRINCESS GATHERING

Lobby Atrium - 10:00 am

### PRINCESS SOFIA

Deck 4, Balcony  
10:30 am & 11:30 am

### CHARACTER DANCE PARTY

Lobby Atrium - 12:15 pm

### BUZZ LIGHTYEAR

Lobby Atrium (V)  
1:15 pm & 2:15 pm

### PHINEAS & FERB

Lobby Atrium (H)  
1:30 pm, 2:30 pm, 5:30 pm,  
7:45 pm & 9:45 pm

### WOODY

Lobby Atrium (V)  
1:45 pm & 2:45 pm

### MICKEY MOUSE

Deck 4, Balcony  
4:45 pm, 7:15 pm & 9:30 pm

### PLUTO

Deck 4, Balcony  
5:15 pm & 7:45 pm

### PINOCCHIO

Preludes  
5:15 pm & 9:30 pm

### CINDERELLA

Lobby Atrium  
5:15 pm & 7:30 pm

### RAPUNZEL

Preludes  
5:45 pm & 10:00 pm

### MINNIE MOUSE

Deck 4, Balcony  
5:45 pm & 10:00 pm



(H) Hallway - (S) Starboard Side - (P) Port Side - (V) Vestibule

For details of daily Disney character appearances, refer to the character line on your Navigator Grid, or the digital character board in the Lobby Atrium.

## IMPORTANT NUMBERS

Fire/Security: 7-3001  
Medical Emergency: 7-3000  
Health Center: 7-1923

## YOUTH ACTIVITIES THEMED EXPERIENCES

**CLUBHOUSE SERIES**  
focuses on movement and features content which appeals to younger children.

**JUMP UP! SERIES**  
includes large group games & movement-oriented activities.

**IN THE SPOTLIGHT SERIES**  
focuses on children's stage presence with lots of activities and enthusiasm.

**STORYBOOK SERIES**  
is designed with a strong connection to the Disney classic stories.

**CREATE & INVENT SERIES**  
will have a tactile focus allowing children to create and admire their work.

**SOLVE IT! SERIES**  
are less active, but will challenge children with problem/solutions-based activities.

### YOUTH ACTIVITIES OPEN HOUSE

A non-secured program with activities for families, adults and children of all ages to enjoy together.

## SHIP DIRECTORY

YOUTH ACTIVITIES		
DISNEY'S OCEANEER CLUB	DECK 5, MID	9:00 AM - 12:00 PM
DISNEY'S OCEANEER LAB	DECK 5, MID	9:00 AM - 12:00 PM
EDGE	DECK 13, MID	9:00 AM - 1:00 AM
VIBE	DECK 4, FWD	9:00 AM - 2:00 AM
IT'S A SMALL WORLD NURSERY	DECK 5, MID	9:00 AM - 11:30 PM

### POOLS & MORE

\* Children under 12 must have adult supervision in pool areas.

AQUADUCK	DECK 12, MID	9:00 AM - 11:00 PM
AQUALAB	DECK 12, AFT	10:00 AM - 6:00 PM
DONALD'S POOL	DECK 11, MID	9:00 AM - 6:00 PM 8:00 PM - 10:00 PM
MICKEY'S POOL	DECK 11, MID	6:00 AM - 11:30 PM
MICKEY'S SLIDE	DECK 11, MID	9:00 AM - 6:00 PM
NEMO'S REEF	DECK 11, MID	9:00 AM - 6:00 PM
QUIET COVE POOL (18+)	DECK 11, FWD	6:00 AM - 12:00 AM
SATELLITE FALLS	DECK 13, FWD	6:00 AM - 8:00 PM

### RECREATION

GOLF/SPORTS SIMULATORS	DECK 13, AFT	9:00 AM - 6:00 PM
GOOFY GOLF	DECK 13, AFT	8:00 AM - 10:00 PM
GOOFY'S SPORTS DECK	DECK 13, AFT	8:00 AM - 6:00 PM
MIDSHIP DETECTIVE AGENCY	DECKS 2 & 5, MID	9:00 AM - 10:00 PM
PORT ADVENTURES DESK	DECK 5, MID	9:00 AM - 5:00 PM 7:00 PM - 8:30 PM
SENSES FITNESS CENTER (18+)	DECK 11, FWD	6:30 AM - 10:00 PM

### GENERAL INFORMATION

ARR-CADE	DECK 11, AFT	24 HOURS
DISNEY VACATION CLUB	DECK 4, MID	9:00 AM - 11:00 AM 2:30 PM - 10:00 PM
GUEST SERVICES	DECK 3, MID	24 HOURS
MEDICAL HEALTH CENTER	DECK 1, FWD	9:30 AM - 11:00 AM 4:30 PM - 7:00 PM
ONBOARD SALES DESK	DECK 4, MID	10:00 AM - 12:00 PM 2:00 PM - 6:00 PM 7:30 PM - 8:30 PM
PORT & SHOPPING DESK	DECK 4, MID	10:00 AM - 11:30 AM 7:30 PM - 8:30 PM
PRELUDES	DECK 3, FWD	2:30 PM - 3:15 PM 5:45 PM - 6:30 PM 8:00 PM - 8:45 PM 10:30 PM - 11:30 PM
SENSES SPA AND SALON	DECK 11, FWD	8:00 AM - 10:00 PM
SHUTTERS PHOTO GALLERY	DECK 4, MID	10:00 AM - 11:00 PM
SHUTTERS DIGITAL	DECK 4, MID	24 HOURS

### SHOPPING

BIBBIDI BOBBIDI BOUTIQUE	DECK 5, MID	9:00 AM - 9:00 PM
MICKEY'S MAINSAIL	DECK 3, FWD	9:30 AM - 11:00 PM
QUACKS	DECK 11, MID	10:00 AM - 4:00 PM
SEA TREASURES	DECK 3, FWD	9:30 AM - 11:00 PM
VISTA GALLERY	DECK 4, MID	10:00 AM - 10:00 PM
WHITE CAPS	DECK 3, FWD	9:30 AM - 11:00 PM
WHOZITS & WHATZITS	DECK 11, MID	10:00 AM - 4:00 PM

## DINNER MENU

Animator's Palate: Pacific Rim  
Enchanted Garden: Continental Market  
Royal Court: French Dinner  
Dining Times: 5:45 p.m. & 8:15 p.m.

## DRINK OF THE DAY

Yellow Bird (Alcoholic)  
Lava Smoothie (Non Alcoholic)

## WEATHER FORECAST

Today: Partly Cloudy  
High: 82° F/28° C  
Tomorrow: Partly Cloudy  
High: 80° F/27° C

Evening Attire: Cruise Casual

## DINING & LOUNGES

### BREAKFAST

CABANAS CONTINENTAL	DECK 11, AFT	7:00 AM - 7:30 AM
CABANAS	DECK 11, AFT	7:30 AM - 11:30 AM
ROYAL COURT	DECK 3, MID	8:00 AM - 9:30 AM

### LUNCH

CABANAS	DECK 11, AFT	11:30 AM - 2:00 PM
FILLMORE'S FAVORITES	DECK 11, MID	11:00 AM - 6:00 PM
LUIGI'S PIZZA	DECK 11, MID	11:00 AM - 6:00 PM
ROYAL COURT	DECK 3, MID	12:00 PM - 1:30 PM
TOY MATER'S GRILL	DECK 11, MID	11:00 AM - 11:00 PM

### DINNER

ANIMATOR'S PALATE	DECK 3, AFT	5:45 PM & 8:15 PM
ENCHANTED GARDEN	DECK 2, MID	5:45 PM & 8:15 PM
ROYAL COURT	DECK 3, MID	5:45 PM & 8:15 PM
CABANAS TABLE SERVICE	DECK 11, AFT	6:30 PM - 8:30 PM
PALO (18+) (RESERVATIONS REQ. & NOM. FEE APPLIES)	DECK 12, AFT	6:00 PM - 8:30 PM
REMY (18+) (RESERVATIONS REQ. & NOM. FEE APPLIES)	DECK 12, AFT	6:00 PM - 8:30 PM

### LATE NIGHT SNACKS

LA PIAZZA (18+)	DECK 4, AFT	10:45 PM - 11:45 PM
LUIGI'S PIZZA	DECK 11, MID	9:30 PM - 12:30 AM

### ADDED FEATURES

BEVERAGE STATION	DECK 11, MID	24 HOURS
EYE SCREAM	DECK 11, MID	11:00 AM - 11:00 PM
ROOM SERVICE	DIAL 0	24 HOURS

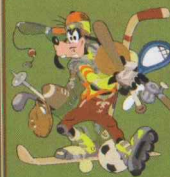
### ENTERTAINMENT - LOUNGES - BARS

Adults must be 21 and older to consume alcoholic beverages.

BON VOYAGE	DECK 3, MID	10:00 AM - 11:30 PM
COVE BAR (18+)	DECK 11, FWD	10:00 AM - 11:00 PM
COVE CAFE (18+)	DECK 11, FWD	7:00 AM - 12:00 AM
CURRENTS (18+)	DECK 13, FWD	10:00 AM - 11:00 PM
D LOUNGE	DECK 4, MID	SHOWTIMES
FROZONE TREATS	DECK 11, MID	10:00 AM - 10:00 PM
LA PIAZZA (18+ AFTER 9:00 P.M.)	DECK 4, AFT	12:30 PM - 12:00 AM
MERIDIAN (18+)	DECK 12, AFT	10:00 AM - 12:00 AM
O'GILLS PUB (18+ AFTER 9:00 P.M.)	DECK 4, AFT	12:00 PM - 12:00 AM
OOH LA LA (18+)	DECK 4, AFT	5:30 PM - 12:00 AM
OUTLOOK	DECK 14, MID	
SKYLINE (18+)	DECK 4, AFT	5:30 PM - 12:30 PM
THE TUBE (18+ AFTER 9:00 P.M.)	DECK 4, AFT	9:30 PM - 2:00 AM
VISTA CAFE	DECK 4, MID	7:00 AM - 11:00 PM
WAVES	DECK 12, AFT	10:00 AM - 6:00 PM

Public Health Advisory: Consuming raw or under-cooked meats, poultry, seafood, shellfish, or eggs may increase your risk for food borne illness, especially if you have certain medical condition

## GOOFY'S SPORTS Digital Simulators



### Sports Simulator

(Basketball, Baseball, Hockey, Football or Soccer) \$12 / half hr, \$20 / hr

### Golf Simulator

\$25 / half hr, \$45 / hr

Reservations can be made at the Port Adventures Desk, Deck 5, Midship or at the Simulators, Deck 13, Aft