

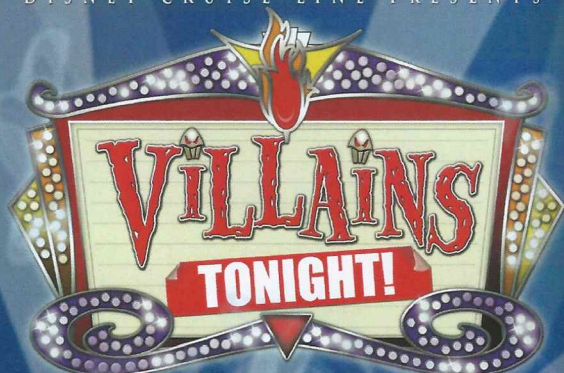
# PERSONAL NAVIGATOR

TUESDAY, AUGUST 12, 2014

Sunrise: 6:32 am Sunset: 8:39 pm  
Evening Attire: Cruise Casual  
All Ashore: See Tender Letter.  
All Aboard: 6:30 pm  
Today: Sunny High: 84°F/29°C  
Tomorrow: Showers High: 79°F/26°C

VILLEFRANCHE, FRANCE

DISNEY CRUISE LINE PRESENTS



WALT DISNEY THEATRE

Deck 4, Forward,  
6:45 p.m. & 9:00 p.m.

As a courtesy to all Guests, we kindly advise that the saving of seats is **not** permitted in the Walt Disney Theatre.



Assistance available at the entrance to the Walt Disney Theatre 30 minutes prior to show time.

## Welcome to Villefranche, France

Villefranche is located in the south of France overlooking the Mediterranean. It is the gateway to the French Riviera including Nice (pronounced "Niece"), known for its long promenade along the coast and its open markets; the historic town of Eze; Cannes, famous for hosting the international film festival; and the principality of Monaco.

Villefranche was originally founded by the Greeks in the fourth century and taken over by the Romans in the second century. Upon the decline of the Roman Empire, Nice was under Italian rule.

In the 19th century, King Immanuel III sold Nice to Napoleon III. Once Nice became a French territory the railway was extended from Marseilles, and residents would begin to travel for leisure to this picturesque seaside village.



Disney Cruise Line

PORT ADVENTURES 

Check your port adventures tickets for your tour meeting time and location or availability and tour information. Stop by the Port Adventures Desk located on Deck 3 Midship where our team will be delighted to help you plan your vacation.

## DINNER MENU

Animator's Palate : Pacific Rim Cuisine  
Carioca's : South American Cuisine  
Lumiere's : French Cuisine

## DRINK OF THE DAY

Acqua Marina (Alcoholic)  
Coco Bali (Non-Alcoholic)

## IMPORTANT NUMBERS

Fire/Security: 7-3001  
Medical Emergency: 7-3000  
Health Center: 7-1923



## ADULT ACTIVITY HIGHLIGHTS



**SENSES SPA FITNESS CLASSES & SEMINARS**  
*Body Sculpt Boot Camp* - Senses Spa Fitness Center - 7:00 am  
*Pilates* - Senses Spa Fitness Center - 9:00 am  
*Seminar: Walking In Comfort* - Senses Spa & Salon - 5:00 pm

### TASTING CLASSES

*Stem to Stern Wine Tasting* (21+) - Keys - 12:30 pm  
*Beer Tasting* (21+) - O'Gills Pub - 4:00 pm  
 Please make reservations for tastings at Guest Services for a nominal fee.  
 Tasting Seminars are only for Guests 21 and Older.

CLUB  
18\*21

**CLUB 18\*21 - XBOX KINECT CHALLENGE**  
*O'Gills Pub, Deck 3, Forward - 5:30 pm*

**CLUB 18\*21 - MIXER**  
*Fathoms, Deck 3, Forward - 10:15 pm*

### LOUNGE AT COVE WITH DJ MATT

*Quiet Cove Pool, Deck 9, Forward - 7:45 pm*  
 A chance to unwind and relax under the moonlight sky, as DJ Matt plays some soothing tunes for your enjoyment.

### LIVE PIANO WITH TIM MOSS

*Keys, Deck 3, Forward - 7:45 pm, 9:45 pm & 10:45 pm*  
 Join Tim Moss as he plays live piano for your listening pleasure. With a special tribute to Burt Bacharach at 7:45 pm.

### 70'S MUSIC TRIVIA

*O'Gills Pub, Deck 3, Forward - 8:00 pm*  
 Let's step back in time and visit Studio 54 as we test your 70's music knowledge.

### VARIETY SHOW: KYLE KNIGHT & MISTIE

*Fathoms, Deck 3, Forward - 10:30 pm*  
 Featuring the Magic & Illusion of Kyle Knight and Mistie as they entertain you in this adult exclusive cabaret style show.



### DISCO LEGENDS

*Fathoms, Deck 3, Forward - 11:00 pm*  
 Put on your platform shoes and hit the dance floor as we catch a disco fever. Our '70s dance party will have you spinning like a disco ball.



## FUN FOR ALL AGES HIGHLIGHTS

### PICTIONARY CHALLENGE

*Promenade Lounge, Deck 3, Aft - 1:00 pm*  
 Join your Cruise Staff for this exciting game of fast draw.

### XBOX CHALLENGE

*O'Gills Pub, Deck 3, Forward - 1:45 pm*  
 Join your cruise staff for some Xbox fun!

### DISNEY TRIVIA

*Promenade Lounge, Deck 3, Aft - 3:30 pm*  
 Navigate your way through a round of questions to test how much you really know about Disney.

### CRAFTS: ORIGAMI CREATIONS

*Promenade Lounge, Deck 3, Aft - 4:00 pm*  
 Your Cruise Staff teaches you the ancient art of paper folding.

### FLAMENCO WITH ESENCIA SPANISH DANCERS

*Promenade Lounge, Deck 3, Aft - 7:45 pm*  
 Featuring the traditions of Spanish and Flamenco dance by the Esencia Spanish Dancers, as they entertain the entire family in this fun-filled show.



### SENSES SPA BINGO

*Bingo Pre-Sales start at 7:45 pm*  
*Fathoms, Deck 3, Forward - 8:00 pm*  
 Four CASH prizes to be won! Plus great spa prizes that will pamper you, including a mini facial and massages all courtesy of the Senses Spa and Salon. Serenity now!  
 Pre Sales start 15 minutes prior to game.

### XBOX: FAMILY FEUD

*Promenade Lounge, Deck 3, Aft - 10:00 pm*  
 Survey says? Join us as we play a round of Family Feud!

### FAMILY DANCE PARTY WITH THE DREAMERS

*D Lounge, Deck 4, Midship - 10:15 pm*  
 Bring the whole family and dance your cares away to some of your favorite hits! With a special appearance from the World Famous Disney Characters.

### DISNEY TUNES TRIVIA

*Promenade Lounge, Deck 3, Aft - 10:30 pm*  
 Determine just how well you know your Disney Tunes with your Cruise Staff.



# YOUTH ACTIVITIES HIGHLIGHTS

## DINE & PLAY

As a convenience for families dining at 8:45 p.m., our Youth Activities Counselors will be available at 9:45 p.m. at the entrance of Lumiere's, Carioca's and Animator's Palate to bring registered children to join the fun in Disney's Oceaneer Club and Disney's Oceaneer Lab.



Deck 5, Aft (7-5864)

8:30 am - 11:00 pm

Infants and Toddlers can enjoy toys and activities at It's a small world nursery. Reservations are first come, first served so please stop by!



Deck 5, Midship (7-1439)  
(3-12 years old)

11:00 am - 12:00 am

## STORY TIME WITH BELLE

4:15 pm

Come to the Oceaneer Club and listen to one of your favorite Disney stories: Beauty & the Beast!

## HEFFALUMP HUNTING

5:15 pm

Come look for Heffalumps on this fun hunt.



Deck 5, Midship (7-1445)  
(3-12 years old)

8:30 am - 11:00 pm

## FLOAT FUN TRIVIA

1:45 pm

How well do you know the ship? With a Coke Float as your reward, everyone is in the trivia spirit.

## ANYONE CAN COOK

7:45 pm

Anyone can cook as we work together to create some of our favorite treats.



Deck 2, Midship (7-5816)  
(11-14 years old)

10:30 am - 12:00 am

## 4TH PIGS PASTA PALACE

5:00 pm

Build your very own house made out of pasta and play-doh for Franco, the Fourth Little Pig, to see if it will withstand nature's forces.

## GAGA BALL

9:15 pm

Come take part in this great game as you try to outlast your opponents.



Deck 10, Midship (7-18517)  
(14-17 years old)

12:00 pm - 2:00 am

## DODGEBALL

5:00 pm

Let's play fun sports games with your friends and dodge 'em!

## ANIMATION ANTICS

7:45 pm

Learn simple animation techniques and then put your new skills to use by drawing some of your favorite Disney Characters.

# BUENA VISTA THEATRE

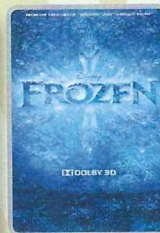
Deck 5, Aft  
Today's Movies

en Español

DOLBY 3D



11:00 am  
Duration:  
1 hr 23 mins  
Rating: PG



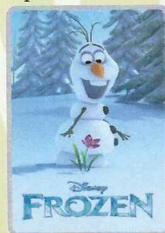
1:00 pm  
Duration:  
1 hr 48 mins  
Rating: PG



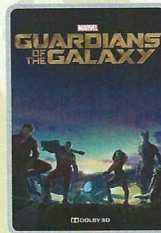
3:15 pm  
Duration:  
2 hrs 2 mins  
Rating: PG-13

Spanish Subtitles

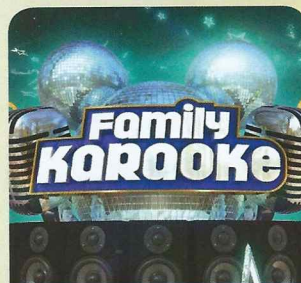
DOLBY 3D



5:45 pm & 8:30 pm  
Duration:  
1 hr 48 mins  
Rating: PG



10:45 pm  
Duration:  
2 hrs 2 mins  
Rating: PG-13



## KARAOKE

Join your Cruise Staff in D Lounge tonight and sing along to your favorite song, fun for everyone.

D Lounge,  
Deck 4, Midship,  
11:00 pm



## ADULT VARIETY ACT

Featuring the Magic and Illusion of Kyle Knight and Mistie, as they entertain you in this adult exclusive show.

Fathoms (18+),  
Deck 3, Forward  
10:30 pm

## YOUTH ACTIVITIES OPEN HOUSE

Open House is an opportunity for all to come and participate in a variety of exciting activities and free time in the Oceaneer Club, Oceaneer Lab, it's a small world nursery, Vibe and Edge throughout the cruise. During these times secured programming will still be offered in the other venue for those looking to check their children into care.

Edge: 10:30 am - 12:00 pm & 6:00 pm - 7:30 pm

Vibe: 12:00 pm - 2:00 pm & 6:00 pm - 7:30 pm

Disney's Oceaneer Club: 11:00 am - 2:30 pm

Disney's Oceaneer Lab: 3:00 pm - 6:00 pm



# MORE TO ENJOY WHILE ONBOARD



## ALASKA AWAITS

Take your family on an Alaskan adventure they'll never forget! Sail through magnificent fjords fed by glaciers. Discover untamed nature and walk in the footsteps of prospectors. Begin your adventure today! Visit the Onboard Sales Desk to learn more about our special onboard booking offer.



## DISNEY VACATION CLUB

Visit the Disney Vacation Club information desk and ask us about show times where you will learn how to turn every vacation into the vacation of a lifetime.



## PORT & SHOPPING INFORMATION

Missed the Port Shopping Presentation? Tune into channel 26-6 to discover why Florence is one of the best shopping destinations in the world! Gemma will be available to answer all of your Port Shopping questions from 7:00 pm and 9:00 pm Port Shopping Desk Deck 3, Midship.



**Deck 9, Forward - Phone : 7-1465**

## ACUPUNCTURE

Naturally effective for pain, arthritis, sea sickness, stress, digestion, weight loss, and much more. Let us help you enjoy your magical cruise and beyond. We invite you to schedule a consultation with our Licensed Acupuncturist.

## SOPHIA FIORI DIAMOND TRUNK SHOW

Dazzling Diamonds,  
Tantalizing Tanzanite and  
many other Jewels.

## WHITE CAPS

**Deck 4, Forward**



## GET THE PICTURE!

Order a Get the Picture! photo disc and share your vacation memories digitally! No need to decide which photos to take home now, select your photos from the comfort of your home. Print, send and share your photos easily! Hurry, as supplies are limited.

*\*Terms and conditions apply. Photos captured on your vacation are only available for purchase during this cruise.*

## Connect@Sea

We are now offering a NEW and improved Internet service to stay connected on your cruise like no other in the industry! Internet packages range from \$0.25 per MB - \$89.00 (1000 MB package). For more information contact your Connect@Sea Expert or Guest Services onboard.

## PALO RESERVATIONS

Dine in our adult-exclusive, 18 years and older, restaurant. For more information or to make a reservation please dial 7-6843. Palo is located on Deck 10, Aft, and a nominal fee applies. Reservations and evening attire are required.

## EARLY FLIGHT INFORMATION

Should you have a flight out of the Barcelona airport prior to 10:30 a.m. on debarkation morning kindly bring your airline tickets to Guest Services on Deck 3, Midship for additional information and assistance.



Welcome to the port of Villefranche, France!

Ask our friendly team at the Port Adventures Desk, Deck 3, Midship, during operational hours for availability for tours in La Spezia & Civitavecchia.

## SHOPPING

### ROMERO BRITTO ART AT THE VISTA GALLERY

Visit the Vista Gallery today where you can admire the fun and colorful art pieces featuring some of your favorite Disney characters by celebrated artist, Romero Britto. From original canvas paintings to smaller print copies, the Vista Gallery offers the opportunity for you to take some of the magic home! Deck 4, Midship.

### NEW DISNEY CRUISE LINE COMPASS COLLECTION MERCHANDISE

Visit White Caps and check out the wide selection of merchandise from the new Compass collection. From t-shirts to mugs featuring nautical and Disney Cruise Line themed icons, commemorate your Disney cruise with one of these great souvenirs. Deck 4, Forward.

### STYLISH BRAND NAME MERCHANDISE ONBOARD

For a sophisticated shopping experience, stop by White Caps, Deck 4 Forward, where you'll find an array of luxurious brand name items such as Marc Jacobs and Michael Kors timepieces, Dooney & Bourke and Guess handbags, Chanel and Gucci fragrances, and fine jewelry.

### H2O BATH COLLECTION

Treat yourself to the ultimate indulgence with H2O bath products. H2O offers shampoo, conditioner, lip balm, hydrating body lotion and after sun care. Available in White Caps, Deck 4, Midship.

### DISNEY MAGIC® CRUISE SHIP MERCHANDISE

Commemorate your Mediterranean voyage on the Disney Magic with Disney Cruise Line® merchandise featuring the new Disney Magic logo available at Mickey's Mainsail and White Caps. Deck 4, Forward.

### ERNST BENZ WATCHES

Manufactured in Switzerland and made in the time honored tradition of aviation timekeepers and the fine art of watch making, these large formats, self-winding instruments are renowned for their accuracy, durability and legibility. Stop by White Caps to see our full collection today! Deck 4, Forward.

Due to port regulations, when the ship is docked, the stores will remain closed.

## IMPORTANT INFORMATION

### Security Notice

All Guests (including Children) who wish to disembark or embark the ship are required to present their Key to the World card at the gangway. A passport is also required for all Guests. Guests under the age of 18 are required to have a parent, guardian or other responsible adult sign an authorization form at the Guest Service Desk if they wish to go ashore unaccompanied or with any adult from another stateroom.

### Sunscreens/Insect Repellent Advisory

Use sunscreen first and protect against mosquito bites and related illnesses by applying insect repellent on top of sunscreen when going ashore. Insect repellent is available for purchase in White Caps.

### Cold and Flu Reminder

Please wash hands frequently and thoroughly, particularly before meals. Contact the Health Center by dialing 7-1923, should anyone in your party become ill.

### Inclement Weather

For the safety of all Guests, outdoor events may be changed due to unforeseen weather conditions.

### Corridor Quiet Hours

As a courtesy to all our Guests, please recognize quiet hallway hours from 10:00 p.m. til 8:00 a.m.

### Environmental Message

With Disney's commitment to the Environment please refrain from throwing anything over the Ship's side. Thank you.

### No Reserved Seats Policy

As a courtesy to all Guests we kindly advise that the saving of seats is not permitted in the Walt Disney Theatre, and the saving of the sun loungers is not permitted on Deck 9 and 10. Items left unattended will be returned to lost and found at Guest Services, Deck 3, Midship.

### Smoking

For the comfort of our guests, the following areas are designated as smoking areas:  
• Deck 10 Forward, Starboard Side  
• Deck 9, Forward, Starboard Side at Quiet Cove  
• Deck 4, Starboard Side from 6:00 p.m. to 6:00 a.m. only (all of Deck 4 is non-smoking from 6:00 a.m. to 6:00 p.m.)  
Smoking is prohibited inside all guest staterooms and on stateroom verandahs. Guests found smoking in their staterooms or on their verandahs will be charged a \$250 stateroom recovery fee.

### Walt Disney Theatre

Theatrical performances may use artificial fog, strobe lights, pyrotechnics and other special effects. For the safety of our performers and the comfort of those around you, the use of any photography or video recording device or any electronic equipment is prohibited.

### Verandah Safety

Please do not leave any combustible materials on your balcony when not present in your stateroom for safety reasons.



Morning	8:15	8:30	8:45	9:00	9:15	9:30	9:45	10:00	10:15	10:30	10:45	11:00	11:15	11:30	11:45	12:00	12:15	12:30	12:45	1:00	1:15					
FUNNEL VISION		Sofia the First (G) Funnel Vision				Aladdin (PG) - en Español Funnel Vision					Hercules (G) Funnel Vision					The Emperor's New Groove (G) Funnel Vision										
BUENA VISTA THEATRE												Planes: Fire and Rescue (PG) - en Español Duration: 1 Hour 23 Minutes				Frozen (PG) - 3D Duration: 1 Hour 48 Minutes										
CHARACTERS																										
FUN FOR ALL AGES													Memory Wall 🧠 Disney's Oceaneer Club						Become Iron Man! 🧠 Disney's Oceaneer Club		Pictionary Challenge Promenade Lounge					
ADULTS	Friends of Bill W. Keys																	Stem to Stem Wine Tasting (21+) Keys								
					Pilates Senses Spa Fitness Center																					
VIBE 14-17 YEARS OLD															Youth Activities Open House 🧠											
EDGE 11-14 YEARS OLD										Youth Activities Open House 🧠						Movie Time										
OCEANEER LAB 3-12 YEARS OLD					All About Me 🧠						Oceaneer Rangers 🧠						Your Pick: Board Game Challenge			Lunch						
OCEANEER CLUB 3-12 YEARS OLD													Youth Activities Open House 🧠													
													Memory Wall 🧠						Become Iron Man! 🧠							
Afternoon	1:30	1:45	2:00	2:15	2:30	2:45	3:00	3:15	3:30	3:45	4:00	4:15	4:30	4:45	5:00	5:15	5:30	5:45	6:00	6:15	6:30					
FUNNEL VISION						The Lion King (G) Funnel Vision								Live Music with Rodrigo Figueroa Funnel Vision			Cars (G) Funnel Vision									
BUENA VISTA THEATRE						Guardians of the Galaxy (PG-13) Duration: 2 Hours 2 Minutes										Frozen (PG) - Spanish Subtitles Duration: 1 Hour 48 Minutes										
CHARACTERS									Chip & Dale Gazebo						Pluto Lobby Atrium (P)		Goofy Lobby Atrium (P)		Minnie Preludes		Belle Dk 4, Mid					
	Pluto Gazebo								Mickey Gazebo						Daisy Dk 4, Mid		Cinderella Dk 4, Mid		Mickey Lobby Atrium (P)							
FUN FOR ALL AGES			Xbox Challenge O'Gills Pub				Family Crafts Promenade Lounge				Disney Trivia Promenade Lounge		Crafts: Origami Creations Promenade Lounge				Toddler Time Promenade Lounge				Live Music with The Dreamers Lobby Atrium					
	Mouseketeer Training Disney's Oceaneer Club								Animation Cells Disney's Oceaneer Lab								Super Sloppy Science Disney's Oceaneer Lab									
ADULTS											Beer Tasting (21+) O'Gills Pub				Singles' Mingle Cove Cafe				Walking In Comfort Senses Spa & Salon		Club 18*21 Xbox Challenge O'Gills Pub					
VIBE 14-17 YEARS OLD	Open House 🧠		Chillin' in Vibe				Animation Cells				Scavenger Hunt				Dodgeball				Youth Activities Open House 🧠							
EDGE 11-14 YEARS OLD	Movie Time		Chillin' in Edge				Anyone Can Cook				Scavenger Hunt				4th Pigs Pasta Palace				Youth Activities Open House 🧠							
OCEANEER LAB 3-12 YEARS OLD	Float Fun Trivia						Youth Activities Open House 🧠																			
									Animation Cells 🧠								Super Sloppy Science 🧠									
OCEANEER CLUB 3-12 YEARS OLD	Youth Activities Open House 🧠								Dress Up Fun				Story Time with Belle						Heffalump Hunting 🧠							
	Mouseketeer Training 🧠																									
Evening	6:45	7:00	7:15	7:30	7:45	8:00	8:15	8:30	8:45	9:00	9:15	9:30	9:45	10:00	10:15	10:30	10:45	11:00	11:15	11:30	11:45					
FUNNEL VISION					Up (PG) Funnel Vision								Pixar Shorts (G) Funnel Vision								Brave (PG) - en Español (PG) Funnel Vision					
BUENA VISTA THEATRE					Frozen (PG) - Spanish Subtitles Duration: 1 Hour 48 Minutes												Guardians of the Galaxy (PG-13) 🎬 DOLBY 3D Duration: 2 Hours 2 Minutes									
CHARACTERS				Daisy Preludes				Mickey Preludes		Donald Preludes				Minnie Preludes		Donald Lobby Atrium (P)				Mickey Lobby Atrium (P)						
				Pluto Lobby Atrium (P)		Minnie Preludes		Goofy Lobby Atrium (P)						Cinderella Lobby Atrium (P)		Daisy Preludes										
FUN FOR ALL AGES					Walt Disney Theatre		Bingo Pre Sales Senses Spa Fathoms								Walt Disney Theatre				Family Dance Party D Lounge							
					Escencia Dancers Promenade Lounge		Disney Disco Promenade Lounge										Xbox: Family Feud Promenade Lounge		Disney Tunes Trivia Promenade Lounge		Disney Disco Promenade Lounge					
ADULTS					70's Music Trivia O'Gills Pub								DJ Matt Fathoms								Variety: Kyle Knight & Mistie Fathoms					
	Live Piano with Balazs Pesci Keys				Lounge at Cove with DJ Matt Quiet Cove Pool				Live Piano with Balazs Pesci Keys				Live Piano Keys				Club 18*21 Fathoms									
VIBE 14-17 YEARS OLD	Youth Activities Open House 🧠								Animation Antics		AquaDunk Fun		Pump It Up		Smoothie Hour				Piston Cup Challenge							
EDGE 11-14 YEARS OLD	Youth Activities Open House 🧠				Dodgeball				AquaDunk Fun				GAGA Ball		Trivia Time				Piston Cup Challenge							
OCEANEER LAB 3-12 YEARS OLD	Dinner				Anyone Can Cook 🧠								GAGA Ball 🧠		Magic Show 🧠											
OCEANEER CLUB 3-12 YEARS OLD	Dinner				The Royal Ball 🧠								Camp Out 🧠						Become Iron Man! 🧠							

Symbol for activities that will be repeated during the cruise



Fold along the dotted lines and take me with you so you don't miss any of the fun!



IN THE SPOTLIGHT SERIES  
SQUEE IT! SERIES

JUMP UP! SERIES  
CREATE & INVENT SERIES  
OPEN HOUSE

CLUBHOUSE SERIES  
STORYBOOK SERIES



TUESDAY, AUGUST 12, 2014 - VILLEFRANCHE, FRANCE

# BUENA VISTA THEATRE

Deck 5, Aft  
en Español **DOLBY 3D** Spanish Subtitles **DOLBY 3D**



11:00 am  
Duration:  
1 hr 23 mins  
Rating: PG



1:00 pm  
Duration:  
1 hr 48 mins  
Rating: PG



3:15 pm  
Duration:  
2 hrs 2 mins  
Rating: PG-13



5:45 pm &  
8:30 pm  
Duration:  
1 hr 48 mins  
Rating: PG



10:45 pm  
Duration:  
2 hrs 2 mins  
Rating: PG-13

## Character Appearances

### GOOFY

Gazebo - 1:00 pm  
Lobby Atrium (P)  
5:30 pm & 8:15 pm

### PLUTO

Gazebo - 1:30 pm  
Lobby Atrium (P)  
5:00 pm & 7:30 pm

### CHIP & DALE

Gazebo - 3:00 pm

### MICKY MOUSE

Gazebo - 3:30 pm  
Lobby Atrium (P)  
6:00 pm & 10:45 pm  
Preludes - 8:15 pm

### DAISY DUCK

Deck 4, Midship - 5:00 pm  
Preludes  
7:45 pm & 10:15 pm

### CINDERELLA

Deck 4, Midship - 5:30 pm  
Lobby Atrium (P) - 9:45 pm

### MINNIE MOUSE

Preludes - 5:45 pm,  
7:45 pm & 9:45 pm

### BELLE

Deck 4, Midship - 6:00 pm

### DONALD DUCK

Preludes - 8:45 pm  
Lobby Atrium (P) - 10:15 pm



(P) - Port Side, (S) - Starboard Side

Don't forget your Camera to capture those Magical Moments!

Check here each day for Character appearances.

For detailed Character appearance information, please see the Character Information Board in the Lobby Atrium.

Meet-and-Greets will be advertised for the length of time the line will be open. To avoid disappointment, please meet at start time of appearances.

## YOUTH ACTIVITIES THEMED EXPERIENCES

**CLUBHOUSE SERIES**  
focuses on movement and features content which appeals to younger children.

**STORYBOOK SERIES**  
is designed with a strong connection to the Disney classic stories.

**JUMP UP! SERIES**  
includes large group games & movement-oriented activities.

**CREATE & INVENT SERIES**  
will have a tactile focus allowing children to create and admire their work.

**IN THE SPOTLIGHT SERIES**  
focuses on children's stage presence with lots of activities and enthusiasm.

**SOLVE IT! SERIES**  
are less active, but will challenge children with problem/solutions-based activities.

### YOUTH ACTIVITIES OPEN HOUSE

Activities for families, adults and children of all ages to enjoy together.

## SHIP DIRECTORY

### YOUTH ACTIVITIES

DISNEY'S OCEANEER CLUB	DECK 5, MID	11:00 AM - 12:00 AM
DISNEY'S OCEANEER LAB	DECK 5, MID	8:30 AM - 11:00 PM
EDGE	DECK 2, MID	10:30 AM - 12:00 AM
IT'S A SMALL WORLD NURSERY	DECK 5, AFT	8:30 AM - 11:00 PM
VIBE	DECK 10, MID	12:00 PM - 2:00 AM

### POOLS

\*Children under 12 years of age must have adult supervision in all pools.

AQUADUNK	DECK 10, MID	1:00 PM - 10:00 PM
AQUALAB	DECK 9, AFT	9:00 AM - 10:00 PM
GOOFY'S POOL	DECK 9, MID	10:00 AM - 6:00 PM
		8:00 PM - 10:00 PM
NEPHEWS' SPLASH ZONE	DECK 9, AFT	9:00 AM - 6:00 PM
QUIET COVE POOL (18+)	DECK 9, FWD	6:00 AM - 12:00 AM
TWIST 'N' SPOUT	DECK 9, AFT	12:00 PM - 9:00 PM

### RECREATION

PORT ADVENTURES DESK	DECK 3, MID	7:00 AM - 9:30 AM
		7:00 PM - 9:30 PM
SENSES FITNESS CENTER (18+)	DECK 9, FWD	6:30 AM - 10:00 PM
WIDE WORLD OF SPORTS DECK	DECK 10, FWD	24 HOURS

### GENERAL INFORMATION

BUENA VISTA THEATRE	DECK 5, AFT	SHOWTIMES
DISNEY VACATION CLUB DESK	DECK 4, MID	6:00 PM - 11:00 PM
ONBOARD SALES DESK	DECK 4, MID	8:30 AM - 9:30 AM
		5:00 PM - 6:00 PM
		7:30 PM - 9:30 PM

FUNNEL VISION	DECK 9, MID	SHOWTIMES
GUEST SERVICES	DECK 3, MID	24 HOURS
HAIR BRAIDING	DECK 9, MID	4:00 PM - 6:00 PM
		7:00 PM - 10:00 PM

MEDICAL HEALTH CENTER	DECK 1, FWD	9:30 AM - 11:00 AM
		4:30 PM - 7:00 PM

PORT & SHOPPING DESK	DECK 3, MID	7:00 PM - 9:00 PM
PRELUDES	DECK 4, FWD	5:30 PM - 9:00 PM
QUARTER MASTERS (ARCADE)	DECK 9, MID	24 HOURS
SENSES SPA AND SALON	DECK 9, FWD	8:00 AM - 10:00 PM
SHUTTERS PHOTO GALLERY	DECK 4, AFT	10:00 AM - 10:00 PM
WALT DISNEY THEATRE	DECK 4, FWD	SHOWTIMES

### SHOPPING

MICKY'S MAINSAIL	DECK 4, FWD	7:30 PM - 11:30 PM
QUACKS	DECK 9, MID	
SEA TREASURES	DECK 3, FWD	7:30 PM - 11:00 PM
VISTA GALLERY	DECK 4, MID	7:30 PM - 11:00 PM
WHITE CAPS	DECK 4, FWD	7:30 PM - 11:30 PM

## IMPORTANT NUMBERS

Fire/Security: 7-3001  
Medical EMERGENCY: 7-3000  
Health Center: 7-1923

<b>DINNER MENU</b>	Animator's Palate : Pacific Rim Cuisine	<b>DRINK OF THE DAY</b>	Acqua Marina (Alcoholic)	<b>WEATHER FORECAST</b>	Today: Sunny
	Carioca's : South American Cuisine		Coco Bali (Non-Alcoholic)		High: 84°F/29°C
	Lumiere's : French Cuisine				Tomorrow: Showers
					High: 79°F/26°C

Evening Attire: Cruise Casual

## DINING & LOUNGES

### BREAKFAST

CABANAS	DECK 9, AFT	7:00 AM - 11:30 AM
DAISY'S DE LITES	DECK 9, AFT	6:30 AM - 9:00 AM
CARIOCA'S	DECK 3, AFT	7:15 AM - 9:00 AM

### LUNCH

CABANAS	DECK 9, AFT	11:30 AM - 3:00 PM
DAISY'S DE LITES	DECK 9, AFT	11:30 AM - 6:30 PM
PETE'S BOILER BITES	DECK 9, AFT	11:30 AM - 10:30 PM
PINOCCHIO'S PIZZERIA	DECK 9, MID	11:30 AM - 6:30 PM

### DINNER

ANIMATOR'S PALATE	DECK 4, AFT	6:15 PM & 8:45 PM
CABANAS TABLE SERVICE	DECK 9, AFT	6:30 PM - 8:30 PM
CARIOCA'S	DECK 3, AFT	6:15 PM & 8:45 PM
LUMIERE'S	DECK 3, MID	6:15 PM & 8:45 PM
PALO (FOR RESERVATIONS CALL 7-8843)	DECK 10, AFT	6:00 PM - 8:30 PM
PETE'S BOILER BITES	DECK 9, AFT	6:30 PM - 10:30 PM

### LATE NIGHT SNACKS

O'GILLS PUB	DECK 3, FWD	10:45 PM - 11:45 PM
PINOCCHIO'S PIZZERIA	DECK 9, MID	10:00 PM - 12:30 AM
PROMENADE LOUNGE	DECK 3, AFT	10:45 PM - 11:45 PM

### ADDED FEATURES

EYE SCREAM	DECK 9, AFT	11:00 AM - 11:00 PM
BEVERAGE STATION	DECK 9, AFT	24 HOURS
ROOM SERVICE	DIAL 7-4330	24 HOURS

### ENTERTAINMENT - LOUNGES - BARS

Adults must be 21 and older to consume alcoholic beverages.

AFTER HOURS	DECK 3, FWD	(AFTER 9:00 PM. ADULTS ONLY)
COVE CAFE (18+)	DECK 9, MID	6:00 AM - 12:00 AM
D LOUNGE	DECK 4, MID	SHOWTIMES
FATHOMS (18+)	DECK 3, FWD	7:00 PM - 2:00 AM
FROZONE TREATS	DECK 9, AFT	10:30 AM - 6:00 PM
INTERNET CAFE	DECK 3, AFT	24 HOURS
KEYS (18+)	DECK 3, FWD	5:30 PM - 12:30 AM
O'GILLS PUB (18+)	DECK 3, FWD	3:00 PM - 12:30 AM
PRELUDES	DECK 4, FWD	5:00 PM - 9:00 PM
PROMENADE LOUNGE	DECK 3, AFT	9:00 AM - 12:30 AM
PINOCCHIO'S PIZZERIA	DECK 9, MID	9:30 AM - 12:30 AM
SIGNALS (18+)	DECK 9, FWD	10:00 AM - 12:30 AM

Public Health Advisory: Consuming raw or undercooked meats, poultry, seafood, shellfish, or eggs may increase your risk for foodborne illness, especially if you have certain medical condition.

All Ashore: See Tender Letter.  
All Aboard: 6:30 pm

Ship's Agent In Villefranche

Medacruises Agency  
Littoral Enterprises 8, rue Andre Allar F-13015, 13002, Marseille, France  
Ms. Laurie Nicolaidis

T: +33 06 07 42 33 39; Mobile: +39 26 07 42 33 39