

PERSONAL NAVIGATOR

MONDAY, JUNE 16, 2014

Sunrise 5:48 a.m. Sunset: 9:14 p.m.
 Evening Attire: Cruise Casual
 All Ashore: Refer to Tender Letter
 All Aboard: 6:30 p.m.
 Today: Partly Sunny High: 74°F/23°C
 Tomorrow: Partly Sunny High: 74°F/23°C

VILLEFRANCHE

SHOWTIME FEATURING THE MUSIC OF STRINGFEVER

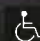
WALT DISNEY THEATRE

Deck 4, Forward

7:00 p.m. & 9:00 p.m.

As a courtesy to all Guests, we kindly advise that the saving of seats is **not** permitted in the Walt Disney Theatre.



 Assistance available at the entrance to the Walt Disney Theatre 30 minutes prior to show time.

Villefranche Port Information

Villefranche is located in the south of France overlooking the Mediterranean. It is the gateway to the French Riviera including Nice (pronounced "niece"), known for its long promenade along the coast and its open markets; the historic town of Eze; Cannes, famous for hosting the international film festival; and the principality of Monaco.

Villefranche was originally founded by the Greeks in the fourth century and taken over by the Romans in the second century. Upon the decline of the Roman Empire, Nice was under Italian rule.

In the 19th century, King Immanuel III sold Nice to Napoleon III. Once Nice became a French territory the railway was extended from Marseilles, and residents would begin to travel for leisure to this picturesque seaside village.



Disney Cruise Line

PORT ADVENTURES 

Please check your tickets for meeting times and locations. Visit the Port Adventure's Desk, Deck 3, Midship for any questions.

DINNER MENU

Animator's Palate : Pacific Rim Cuisine
 Carioca's : South American Cuisine
 Daisy's de Lites : Dinner
 Lumiere's : French Cuisine
 Pete's Boiler Bites : Dinner

DRINK OF THE DAY

Coco Mango Lava (Non-Alcoholic)
 Deja Vu (Alcoholic)

IMPORTANT NUMBERS

Fire/Security: 7-3001
 Medical Emergency: 7-3000
 Health Center: 7-1923

ADULT ACTIVITY HIGHLIGHTS



SENSES SPA FITNESS CLASSES & SEMINARS

Body Sculpt Boot Camp - Senses Spa Fitness Center - 8:00 a.m.
Yoga - Senses Spa Fitness Center - 9:00 a.m.
Abs Attack - Senses Spa Fitness Center - 10:00 a.m.
Back Pain Solutions - Senses Spa & Salon - 2:00 p.m.
Eat More to Weigh Less - Senses Spa & Salon - 4:00 p.m.
Acupuncture For Weight Loss - Senses Spa & Salon - 4:30 p.m.

TASTING CLASSES

Champagne Tasting (21+) - Keys - 3:00 p.m.
Italian Liquor Tasting (21+) - Cove Cafe - 10:30 p.m.
Please make reservations for tastings at Guest Services for a nominal fee.
Tasting Seminars are only for Guests 21 and Older.

CLUB
18*21

CLUB 18*21 - MIXER

O'Gills Pub, Deck 3, Forward - 10:15 p.m.
Come to join fellow cruisers your own age at our exclusive Club 18*21 event.

XBOX CHALLENGE

Promenade Lounge, Deck 3, Aft - 1:45 p.m.
O'Gills Pub, Deck 3, Forward - 5:15 p.m.
Join your cruise staff for some Xbox fun!



MATCH YOUR MATE (18+)

Fathoms, Deck 3, Forward - 10:30 p.m.
It's time to play everyone's favorite couples game show - Match Your Mate!

FUN FOR ALL AGES HIGHLIGHTS

PICTIONARY CHALLENGE

Promenade Lounge, Deck 3, Aft - 1:00 p.m.
Come have some fun with this classic game

CRAFTS: DOOR HANGERS

Promenade Lounge, Deck 3, Aft - 2:45 p.m.
Make some decorative door hangers with your Cruise Staff.

DISNEY TRIVIA

Promenade Lounge, Deck 3, Aft - 3:30 p.m.
Navigate your way through a round of questions to test how much you really know about Disney.

CRAFTS: ORIGAMI FAVORITES

Promenade Lounge, Deck 3, Aft - 4:00 p.m.
Your Cruise Staff teaches you the ancient art of paper folding.

FAMILY DANCE PARTY

D Lounge, Deck 4, Midship - 7:45 p.m.
Bring the whole family and dance your cares away to some of your favorite hits!

SENSES SPA BINGO

Fathoms, Deck 3, Forward - 8:00 p.m.
Four CASH prizes to be won! Plus great spa prizes that will pamper you, including a mini facial and massages all courtesy of the Senses Spa and Salon. Serenity now! Pre Sales start 15 minutes prior to game.

BINGO

FAMILY SUPERSTAR KARAOKE

D Lounge, Deck 4, Midship - 10:00 p.m.
Join your Cruise Staff in D Lounge tonight and sing along to your favorite song - fun for everyone.



YOUTH ACTIVITIES HIGHLIGHTS

DINE & PLAY

As a convenience for families dining at 8:45 p.m., our Youth Activities Counselors will be available at 9:45 p.m., at the entrance of Lumiere's, Carioca's and Animator's Palate to bring registered children to join the fun in Disney's Oceaneer Club and Disney's Oceaneer Lab.



Deck 5, Aft (7-5864)

8:00 a.m. - 11:30 p.m.

Infants and Toddlers can enjoy toys and activities at It's a Small World Nursery. Reservations are first come, first served so please stop by!



Deck 5, Midship (7-1440)

(3-12 years old)

11:00 a.m. - 12:00 mid

YOUTH ACTIVITIES OPEN HOUSE

11:00 a.m.

All are welcomed to enjoy the Youth Activity spaces for Open House!

BECOME IRON MAN!

3:15 p.m.

Do you want to be Iron Man? Marvel's Avengers Academy invites you to virtually suit up in Iron Man's armor for an exciting interactive training gauntlet.



Deck 5, Midship (7-1445)

(3-12 years old)

7:00 a.m. - 11:00 p.m.

YOUTH ACTIVITIES OPEN HOUSE

5:00 p.m.

All are welcomed to enjoy the Youth Activity spaces for Open House!

SUPER SLOPPY SCIENCE

5:00 p.m.

Join Professor Make-O-Mess in some of the most extreme experiments you will ever see in the world of Super Sloppy Science!



Deck 2, Midship (7-5816)

(11-14 years old)

10:00 a.m. - 11:00 p.m.

YOUTH ACTIVITIES OPEN HOUSE

10:00 a.m. & 6:00 p.m.

All are welcomed to enjoy the Youth Activity spaces for Open House!

ANIMATION ANTICS

5:00 p.m.

Learn simple animation techniques and then put your new skills to use by drawing some of your favorite Disney Characters.



Deck 10, Midship (7- 18517)

(14-17 years old)

12:00 p.m. - 2:00 a.m.

ANIMATION CELLS

4:00 p.m.

Learn what it takes to be a Disney Animator, then put your new skills to the test as you create your very own animation cell.

BASKETBALL CHALLENGE

5:00 p.m.

Come join the ultimate basketball challenge!

BUENA VISTA THEATRE

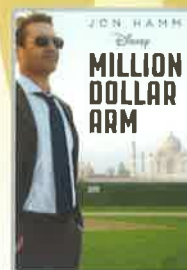
Deck 5, Aft
Today's Movies



1:00 p.m.

Duration: 1 hr 35 mins

Rating: G



3:15 p.m.

Duration: 2 hrs 4 mins

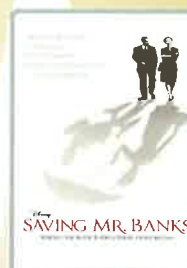
Rating: PG



5:45 p.m. & 8:15 p.m.

Duration: 1 hr 52 mins

Rating: PG



10:45 p.m.

Duration: 2 hrs 5 mins

Rating: PG-13

FAMILY KARAOKE



Be a singing sensation when you and your family take to the stage and sing along to your favorite song.

**D Lounge,
Deck 4, Midship,**

10:00 p.m.



It's time to play everyone's favorite couple's game show - Match your Mate!

**Fathoms(18+),
Deck 3, Forward,**

10:30 p.m.

YOUTH ACTIVITIES OPEN HOUSE

Open House is an opportunity for all to come and participate in a variety of exciting activities and free time in Disney's Oceaneer Club, Disney's Oceaneer Lab, Edge, Vibe, and It's a Small World Nursery throughout the cruise. During these times secured programming will still be offered in the other venues for those looking to check their children into care.

Vibe: 12:00 p.m. - 1:30 p.m.

Edge: 10:00 a.m. - 11:30 a.m.

Disney's Oceaneer Lab: 3:00 p.m. - 6:00 p.m.

Disney's Oceaneer Club: 11:00 a.m. - 2:30 p.m.

MORE TO ENJOY WHILE ONBOARD



ALASKA AWAITS

Take your family on an Alaskan adventure they'll never forget! Sail through magnificent fjords fed by glaciers. Discover untamed nature and walk in the footsteps of prospectors. Begin your adventure today! Visit the Onboard Sales Desk to learn more about our special onboard booking offer.



DISNEY VACATION CLUB

Visit the Disney Vacation Club information desk and ask us about show times where you will learn how to turn every vacation into the vacation of a lifetime.

Connect@Sea

We are now offering a NEW and improved Internet service to stay connected on your cruise like no other in the industry! Internet packages range from \$0.25 per MB - \$89.00 (1000 MB package). For more information contact your Connect@Sea Expert or Guest Services onboard.

DISNEY VACATION CLUB

Visit the Disney Vacation Club information desk and ask us about show times where you will learn how to turn every vacation into the vacation of a lifetime.

CASH DECLARATION NOTICE

Euros will be available for exchange at Guests Services, Deck 3, Midship, 24 hrs a day. Not all currencies will be exchanged onboard, so please check with Guests Services for further information. Croatian Kuna will be available for purchase at Guest Services on Deck 3, Midship starting Sea Day 1. Please be advised that Kuna are not required in Dubrovnik, as Euros are readily acceptable in port.



PAMPER PACKAGE

Receive 75 minute hands on treatment including a 50 minute Full Body Massage with 25 Minute Facial, and relax. Only \$149.

Deck 9, Forward - Phone : 7-1465



Welcome to the port of Villefranche, France. Please check your Port Adventures tickets for your meeting times and locations.

Ask our friendly team at the Port Adventures Desk, Deck 3, Midship, during operational hours, for availability for tours in La Spezia, Civitavecchia and Naples.

SOPHIA FIORI DIAMOND TRUNK SHOW

Dazzling Diamonds,
Tantalizing Tanzanite and
many other Jewels.

WHITECAPS

Deck 4, Forward



GET THE PICTURE

Ask a friendly photographer about Get the Picture! and the incredible value of an unlimited digital photo package, which includes all of your stateroom's photos. Visit Shutters today, as supplies are limited.

*Terms and conditions apply. Photos captured on your vacation are only available for purchase during this cruise.

SHOPPING

DISNEY MAGIC® CRUISE SHIP MERCHANDISE

Commemorate your Mediterranean voyage on the Disney Magic with Disney Cruise Line® merchandise featuring the new Disney Magic logo available at Mickey's Mainsail and White Caps. Deck 4, Forward.

DISNEY CRUISE LINE® DOONEY & BOURKE HANDBAGS

Swing by White Caps and commemorate your cruise with style with the new nautical themed Disney Cruise Line® Dooney & Bourke handbag collection. Deck 4, Forward.

UNIQUE SEA BAGS MADE FROM RECYCLED SAILS

Crafted in Portland, Maine, from real sails collected from sailing communities all over the world, breathing new life into recently retired sails, our totes embody the magic of the sea and bring to every Sea Bags owner a bit of the mystery surrounding the specific sail used in the making of their tote. Visit White Caps today to view the entire collection. Deck 4, Forward.

SOPHIA FIORI DIAMOND TRUNK SHOW

Sophia Fiori is an LA based designer, wholesaler, and one of Hollywood's favorite designers. Industry leaders in vivid colored diamonds, and more specifically Caribbean blue diamonds - one of the single most popular purchases at sea because it reminds everyone of the colors of the Caribbean oceans! White Caps, Deck 4, Forward.

CRUISING IN STYLE

Commemorate your cruise with style by visiting White Caps where you'll find a variety of styles from brands such as Vera Bradley. Accessorize your outfit with brand name handbags and jewelry such as a nautical themed Disney Cruise Line® Dooney & Bourke handbag and Swarovski jewelry. Deck 4, Forward.

DISNEY © 16-2015 DISNEY

IMPORTANT INFORMATION

Security Notice

All Guests (including Children) who wish to disembark or embark the ship are required to present their Key to the World card at the gangway. A passport is also required for all Guests. Guests under the age of 18 are required to have a parent, guardian or other responsible adult sign an authorization form at the Guest Service Desk if they wish to go ashore unaccompanied or with any adult from another stateroom.

Sunscreen/Insect Repellent Advisory

Use sunscreen first and protect against mosquito borne illnesses by applying insect repellent on top of sunscreen when going ashore.

Cold and Flu Reminder

Please wash hands frequently and thoroughly, particularly before meals. Contact the Health Center by dialing 7-1923, should anyone in your party become ill.

Inclement Weather

For the safety of all Guests, outdoor events may be changed due to unforeseen weather conditions.

Corridor Quiet Hours

As a courtesy to all our Guests, please recognize quiet hallway hours from 10:00 p.m. til 8:00 a.m.

Environmental Message

With Disney's commitment to the Environment please refrain from throwing anything over the Ship's side. Thank you.

No Reserved Seats Policy

As a courtesy to all Guests we kindly advise that the saving of seats is not permitted in the Walt Disney Theatre, and the saving of the sun loungers is not permitted on Deck 9 and 10. Items left unattended will be returned to lost and found at Guest Services, Deck 3, Midship.

Smoking

For the comfort of our guests, the following areas are designated as smoking areas:

- Deck 10 Forward, Starboard Side
- Deck 9, Forward, Starboard Side at Quiet Cove
- Deck 4, Starboard Side from 6:00 p.m. to 6:00 a.m. only (all of Deck 4 is non-smoking from 6:00 a.m. to 6:00 p.m.)

Smoking is prohibited inside all guest staterooms and on stateroom verandahs. Guests found smoking in their staterooms or on their verandahs will be charged a \$250 stateroom recovery fee.

Walt Disney Theatre

Theatrical performances may use artificial fog, strobe lights, pyrotechnics and other special effects. For the safety of our performers and the comfort of those around you, the use of any photography or video recording device or any electronic equipment is prohibited.


Verandah Safety

Please do not leave any combustible materials on your balcony when not present in your stateroom for safety reasons.

Due to port regulations, when the ship is docked, the stores will remain closed.

Morning	8:30	8:45	9:00	9:15	9:30	9:45	10:00	10:15	10:30	10:45	11:00	11:15	11:30	11:45	12:00	12:15	12:30	12:45	1:00	1:15	1:30									
FUNNEL VISION	Chicken Little (G) Funnel Vision						Toy Story (G) - en Español Funnel Vision						Lilo & Stitch (PG) Funnel Vision						A Bug's Life (G) Duration: 1 Hour 35 Minutes											
BUENA VISTA THEATRE																														
CHARACTERS																														
FUN FOR ALL AGES							Youth Activities Open House ● Edge (10 a.m. - 11:30 am.)						Become Iron Man ● Disney's Oceaneer Club				Memory Wall ● Disney's Oceaneer Club				Pictionary Challenge Promenade Lounge									
													Youth Activities Open House ● Vibe																	
ADULTS	Friends of Bill W. Animator's Palate						Boot Camp Senses Spa Fitness Center		Abs Attack Senses Spa Fitness Center																					
VIBE 14-17 YEARS OLD															Youth Activities Open House ●															
EDGE 11-14 YEARS OLD							Youth Activities Open House ●						Movie Time																	
OCEANEER LAB 3-12 YEARS OLD	Movie Time 🍿						Wacky Relays 🧩								Lunch															
OCEANEER CLUB 3-12 YEARS OLD															Youth Activities Open House ●								Become Iron Man! 🍿				Memory Wall 🧩		Little Einstein's Adventure	

Afternoon	1:45	2:00	2:15	2:30	2:45	3:00	3:15	3:30	3:45	4:00	4:15	4:30	4:45	5:00	5:15	5:30	5:45	6:00	6:15	6:30	6:45			
FUNNEL VISION	Lemonade Mouth - (TV-G) Funnel Vision						Toy Story 2 (G) Funnel Vision						College Road Trip (G) Funnel Vision											
BUENA VISTA THEATRE	A Bug's Life (G) Duration: 1 Hour 35 Minutes						Million Dollar Arm (PG) Duration: 2 Hours 4 Minutes						Muppets Most Wanted (PG) Duration: 1 Hour 52 Minutes											
CHARACTERS				Minnie Gazebo					Pluto Gazebo					Pluto Lobby Atrium (P)		Minnie Preludes		Belle Dk 4, Mid		Mickey Lobby Atrium (P)				
				Mickey Gazebo						Goofy Gazebo					Goofy Lobby Atrium (P)									
FUN FOR ALL AGES	Xbox® Challenge O'Gills						Crafts: Door Hangers Promenade Lounge			Disney Trivia Promenade Lounge			Crafts: Origami Favorites Promenade Lounge						Toddler Time D Lounge			Live Music with Midtown Promenade Lounge		
																			Live Music with Duo Azucar Lobby Atrium					
ADULTS	Back Pain Solutions Senses Spa & Salon												Singles' Mingle Cove Cafe			Xbox® Challenge O'Gills Pub			World Cup Soccer: Germany vs. Portugal O'Gills Pub (Subject to satellite availability)					
							Eat More to Weigh Less Senses Spa & Salon																	
VIBE 14-17 YEARS OLD	Guitar Hero Challenge			Teen Choice						Animation Cells			Basketball Challenge			Youth Activities Open House ●								
EDGE 11-14 YEARS OLD	Movie Time		Craft Corner			Tween Choice			Scavenger Hunt			Animation Antics			Youth Activities Open House ●									
OCEANEER LAB 3-12 YEARS OLD	Clarabelle's Moo Juice 🍹						Youth Activities Open House ●												Dinner					
							Animation Cells 🍹						Super Sloppy Science 🍹											
OCEANEER CLUB 3-12 YEARS OLD	Youth Activities Open House ●						Become Iron Man! 🍿						Heffalump Hunting											

Evening	7:00	7:15	7:30	7:45	8:00	8:15	8:30	8:45	9:00	9:15	9:30	9:45	10:00	10:15	10:30	10:45	11:00	11:15	11:30	11:45	12:00	
FUNNEL VISION	College Road Trip (G) Funnel Vision				College Road Trip (G) Funnel Vision				Oz The Great and Powerful (PG) Funnel Vision													
BUENA VISTA THEATRE					Muppets Most Wanted (PG) Duration: 1 Hour 52 Minutes								Saving Mr. Banks (PG-13) Duration: 2 Hours 5 Minutes									
CHARACTERS			Minnie Preludes		Mickey Preludes		Donald Preludes				Minnie Preludes		Donald Preludes		Mickey Lobby Atrium (P)				Cinderella Lobby Atrium (P)		Daisy Preludes	
FUN FOR ALL AGES	Showtime: The Music of String Fever Walt Disney Theatre				Family Dance Party D Lounge				Showtime: The Music of String Fever Walt Disney Theatre				Family Superstar Karaoke D Lounge				Dance Party D Lounge					
					Bingo Pre Sales Senses Spa Fathoms								Live Music with Midtown Promenade Lounge				Live Music with Midtown Promenade Lounge					
					Disney Trivia Promenade Lounge																	
ADULTS					Live Piano with Balazs Pecs Keys								DJ Matt Fathoms				DJ Matt Fathoms					
VIBE 14-17 YEARS OLD	Open House ●				Animation Antics		AquaDunk Fun		Pump It Up		Smoothie Hour						Piston Cup Challenge					
EDGE 11-14 YEARS OLD	Open House ●		Basketball Challenge				AquaDunk Fun		GAGA Ball		Trivia Challenge						Piston Cup Challenge					
OCEANEER LAB 3-12 YEARS OLD					Monstropolis Most Wanted								Magic Show 🍿									
OCEANEER CLUB 3-12 YEARS OLD					Pluto's Pajama Party 🍹								Camp Out 🍹		Memory Wall 🧩							

Symbol for activities that will be repeated during the cruise



FOLD

Fold along the dotted lines and take me with you so you don't miss any of the fun!

FOLD

IF THE SPOTLIGHT SERIES
IF THE SPOTLIGHT SERIES

IF THE SPOTLIGHT SERIES
IF THE SPOTLIGHT SERIES

IF THE SPOTLIGHT SERIES
IF THE SPOTLIGHT SERIES

MONDAY, JUNE 16, 2014 - VILLEFRANCHE

BUENA VISTA THEATRE

Deck 5, Aft



1:00 p.m.
Duration:
1 hr 35 mins
Rating: G

3:15 p.m.
Duration:
2 hrs 4 mins
Rating: PG

5:45 p.m. & 8:15 p.m.
Duration:
1 hr 52 mins
Rating: PG

10:45 p.m.
Duration:
2 hrs 5 mins
Rating: PG-13

Character Appearances

MINNIE MOUSE

Gazebo - 2:30 p.m.
Preludes - 5:45 p.m.,
7:30 p.m. & 9:45 p.m.

MICKY MOUSE

Gazebo - 3:00 p.m.
Lobby Atrium (P)
6:15 p.m. & 10:45 p.m.
Preludes - 8:00 p.m.

PLUTO

Gazebo - 3:30 p.m.
Lobby Atrium (P)
5:15 p.m. & 10:15 p.m.

GOOFLY

Gazebo - 4:00 p.m.
Lobby Atrium (P)
5:45 p.m. & 8:15 p.m.

BELLE

Deck 4, Midship
6:00 p.m. & 8:15 p.m.

CINDERELLA

Lobby Atrium (P)
7:30 p.m. & 9:45 p.m.

DAISY DUCK

Deck 4, Midship
7:45 p.m.
Preludes - 10:45 p.m.

DONALD DUCK

Preludes
8:30 p.m. & 10:15 p.m.



(P) - Port Side, (S) - Starboard Side

Don't forget your Camera to capture those Magical Moments!

Check here each day for Character appearances.

For detailed Character appearance information, please see the Character Information Board in the Lobby Atrium.

Meet-and-Greets will be advertised for the length of time the line will be open. To avoid disappointment, please meet at start time of appearances.

YOUTH ACTIVITIES THEMED EXPERIENCES

CLUBHOUSE SERIES
focuses on movement and features content which appeals to younger children.

STORYBOOK SERIES
is designed with a strong connection to the Disney classic stories.

JUMP UP! SERIES
includes large group games & movement-oriented activities.

CREATE & INVENT SERIES
will have a tactile focus allowing children to create and admire their work.

IN THE SPOTLIGHT SERIES
focuses on children's stage presence with lots of activities and enthusiasm.

SOLVE IT! SERIES
are less active, but will challenge children with problem/solutions-based activities.

YOUTH ACTIVITIES OPEN HOUSE

Activities for families, adults and children of all ages to enjoy together.

SHIP DIRECTORY

YOUTH ACTIVITIES

DISNEY'S OCEANEER CLUB	DECK 5, MID	11:00 AM - 12:00 MID
DISNEY'S OCEANEER LAB	DECK 5, MID	7:00 AM - 11:00 PM
EDGE	DECK 2, MID	10:00 AM - 11:00 PM
IT'S A SMALL WORLD NURSERY	DECK 5, AFT	7:00 AM - 11:30 PM
VIBE	DECK 10, MID	12:00 PM - 2:00 AM

POOLS

*Children under 12 years of age must have adult supervision in all pools.

AQUADUNK	DECK 10, MID	1:00 PM - 8:30 PM
AQUALAB	DECK 9, AFT	9:00 AM - 9:00 PM
GOOFLY'S POOL	DECK 9, MID	10:00 AM - 10:00 PM 8:00 PM - 10:00 PM
NEPHEW'S SPLASH ZONE	DECK 9, AFT	9:00 AM - 6:00 PM
QUIET COVE POOL (18+)	DECK 9, FWD	6:00 AM - 12:00 MID
TWIST 'N' SPOUT	DECK 9, AFT	12:00 PM - 9:00 PM

RECREATION

PORT ADVENTURES DESK	DECK 3, MID	7:00 AM - 9:00 AM 7:00 PM - 9:30 PM
SENSES FITNESS CENTER (18+)	DECK 9, FWD	6:30 AM - 10:00 PM
WIDE WORLD OF SPORTS DECK	DECK 10, FWD	24 HOURS

GENERAL INFORMATION

BUENA VISTA THEATRE	DECK 5, AFT	SHOWTIMES
DISNEY VACATION CLUB DESK	DECK 4, MID	5:00 PM - 10:00 PM
ONBOARD SALES DESK	DECK 4, MID	7:30 AM - 8:30 AM 5:00 PM - 7:00 PM 7:00 PM - 10:00 PM

FUNNEL VISION	DECK 9, MID	SHOWTIMES
GUEST SERVICES	DECK 3, MID	24 HOURS
HAIR BRAIDING	DECK 9, MID	4:00 PM - 6:00 PM 7:00 PM - 10:00 PM

MEDICAL HEALTH CENTER	DECK 1, FWD	9:30 AM - 11:00 AM 4:30 PM - 7:00 PM
PORT & SHOPPING DESK	DECK 3, MID	8:30 PM - 9:30 PM
PRELUDES	DECK 4, FWD	5:30 PM - 9:30 PM

QUARTER MASTERS (ARCADE)	DECK 9, MID	24 HOURS
SENSES SPA AND SALON	DECK 9, FWD	8:00 AM - 11:00 PM
SHUTTERS PHOTO GALLERY	DECK 4, AFT	7:00 PM - 11:00 PM
WALT DISNEY THEATRE	DECK 4, FWD	SHOWTIMES

SHOPPING

MICKY'S MAINSAIL	DECK 4, FWD	7:30 PM - 11:30 PM
QUACKS	DECK 9, MID	
SEA TREASURES	DECK 3, FWD	7:30 PM - 11:30 PM
VISTA GALLERY	DECK 4, MID	7:45 PM - 11:00 PM
WHITE CAPS	DECK 4, FWD	7:30 PM - 11:30 PM

IMPORTANT NUMBERS

Fire/Security: 7-3001
Medical EMERGENCY: 7-3000
Health Center: 7-1923

DINNER MENU	Animator's Palate & Pacific Rim Cuisine	DRINK OF THE DAY	Coco Mango Lata	WEATHER FORECAST	Today: Partly Sunny
	Cartesca's South American Cuisine		Sau Alahalla		High: 74°F/23°C
	Daisy's de Lites & Dinner		Deja Vu (Alcoholic)		Tomorrow:
	Lumiere's & French Cuisine				Partly Sunny
	Pete's Boiler Bites & Dinner				High: 74°F/23°C

Evening Attire: Cruise Casual

DINING & LOUNGES

BREAKFAST

CABANAS	DECK 9, AFT	6:15 AM - 11:30 AM
DAISY'S DE LITES	DECK 9, AFT	6:00 AM - 8:30 AM
LUMIERE'S (A-LA CARTE)	DECK 3, MID	7:30 AM - 9:00 AM

LUNCH

CABANAS	DECK 9, AFT	11:30 AM - 3:00 PM
DAISY'S DE LITES	DECK 9, AFT	11:30 AM - 6:30 PM
LUMIERE'S	DECK 3, MID	12:00 PM - 1:30 PM
PETE'S BOILER BITES	DECK 9, AFT	11:30 AM - 6:30 PM
PINOCCHIO'S PIZZERIA	DECK 9, MID	11:30 AM - 6:30 PM

DINNER

ANIMATOR'S PALATE	DECK 4, AFT	6:15 PM & 8:45 PM
CABANAS TABLE SERVICE	DECK 9, AFT	6:30 PM - 8:30 PM
CARIOCA'S	DECK 3, AFT	6:15 PM & 8:45 PM
LUMIERE'S	DECK 3, MID	6:15 PM & 8:45 PM
PALO (FOR RESERVATIONS CALL 7-6843)	DECK 10, AFT	6:00 PM - 8:30 PM
PETE'S BOILER BITES	DECK 9, AFT	6:30 PM - 10:30 PM

LATE NIGHT SNACKS

O'GILLS PUB	DECK 3, FWD	10:45 PM - 11:45 PM
PINOCCHIO'S PIZZERIA	DECK 9, MID	10:00 PM - 12:30 AM
PROMENADE LOUNGE	DECK 3, AFT	10:45 PM - 11:45 PM

ADDED FEATURES

EYE SCREAM	DECK 9, AFT	11:00 AM - 11:00 PM
BEVERAGE STATION	DECK 9, AFT	24 HOURS
ROOM SERVICE	DIAL 7-4330	24 HOURS

ENTERTAINMENT - LOUNGES - BARS

Adults must be 21 and older to consume alcoholic beverages.

AFTER HOURS	DECK 3, FWD	(AFTER 9:00 PM. ADULTS ONLY)
COVE CAFE (18+)	DECK 9, MID	6:00 AM - 12:00 MID
D LOUNGE	DECK 4, MID	SHOWTIMES
FATHOMS (18+)	DECK 3, FWD	7:00 PM - 2:00 AM
FROZONE TREATS	DECK 9, AFT	10:30 AM - 8:00 PM
INTERNET CAFE	DECK 3, AFT	24 HOURS
KEYS (18+)	DECK 3, FWD	5:30 PM - 1:00 AM
O'GILLS PUB (18+)	DECK 3, FWD	3:00 PM - 1:00 AM
PRELUDES	DECK 4, FWD	5:30 PM - 9:30 PM
PROMENADE LOUNGE	DECK 3, AFT	9:00 AM - 12:30 AM
PINOCCHIO'S PIZZERIA	DECK 9, MID	
SIGNALS (18+)	DECK 9, FWD	9:30 AM - 12:00 MID

Public Health Advisory: Consuming raw or undercooked meats, poultry, seafood, shellfish, or eggs may increase your risk for foodborne illness, especially if you have certain medical condition.

All Ashore: Approx. 7:30 a.m.
All Aboard: Refer to Tender Letter

Ship's Agent in Villefranche

Mediterranean Agency
Littoral Enterprises S, rue Andre Allard F-13015, 13002, Marseille, France
Ms. Laurie Nicolaides
T: +33 06 07 42 33 39; Mobile: +39 26 07 42 33 39