

AT A GLANCE

Capital:

Venice is the capital of the Veneto region, and Rome is the capital of Italy

Location:

Venice is located in northeastern Italy on a group of 118 small islands separated by canals and linked by bridges

Population:

270,660

Language:

Venetians speak a unique dialect of Italian called Veneziano

Currency:

The Euro is the currency of Italy. The Euro is divided into 100 cents (centimes, centesimi), with two decimals after the comma. So, a price will often be displayed as €10,00 (ten euros) or €2,14 (two euro and 14 cents).

Banking:

There are more than 100 ATMs in Venice. ATMs offer good exchange rates.

Banks will only exchange currency for their own customers. Paying with travellers cheques is no longer accepted and they are almost impossible to change. If you do find somewhere that will change them, expect to pay high fees.

Post Office:

At the post office you can buy stamps, phone cards, send letters and parcels, send telegrams, faxes, etc. The offices are usually open from 8.30am to 2pm from Monday to Friday and from 8.30am to 1pm on Saturday and the last day of the month. The offices of the Central Post Office of Rialto and of Piazzale Roma are also open in the afternoon from Monday to Friday.

Transportation:

Water shuttles and water taxis are the way to get around Venice. Wear comfortable shoes for walking on land.

Browse your Destination Guide
(found in your stateroom)
for more details.

PORT ADVENTURERS...

Check your ticket for the correct meeting time and location of your tour. Your Port Adventures Team will direct you to transportation.

DON'T FORGET YOUR...

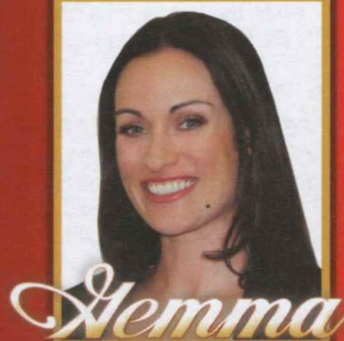
Photo ID and Key to the World Card as well as Cash and/or Credit Cards. Do you have your VIP cards?



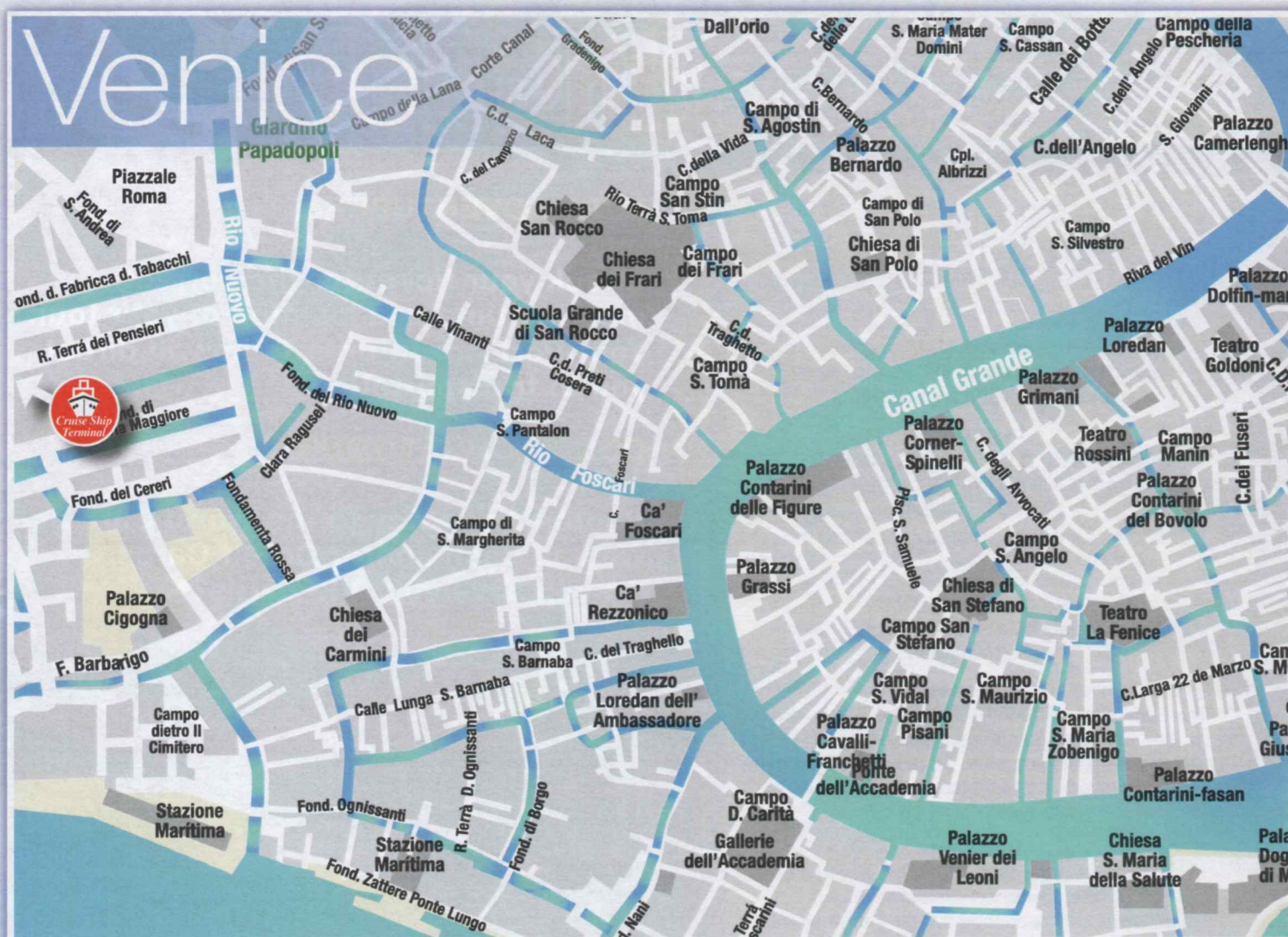
CHANNEL 26-6...

Watch channel 26-6 for insider tips on how to spend your free time, before or after your tour and where to find the best local goods ashore! Stop by Gemma's desk for more information to help create the best experience for you and your family!

SHOPPING GUIDE



PORT SHOPPING MAP



1 LINEA MURANO

When the Sand Turns Into Glass and Glass Becomes Art

- Linea Murano glass factory located on the isle of Murano
- Designers with new ideas and custom made production products
- Produced with the most up-to-date technology
- Chandeliers, mirrors, vases, sculptures and museum reproductions
- All pieces are hand-made by top masters and Murano artisans
- Visit the factory for a complete explanation of how glass is made
- Factory has four levels so one can easily see the masters at work

3 GALLERIA SAN MARCO

The High End Murano Glass Shop

- From traditional to modern, we produce small, medium and large pieces
- Mirrors, chandeliers and glasses engraved in the artistic style
- Beautiful decanters, wine, liqueur glasses and fashion jewelry
- Visit our store for a large selection of original hand made pieces
- Typical Venetian chandeliers can also be found here
- Multi-lingual staff are available to assist you
- Located in San Marco Square, at the top of the staircase
- Worldwide shipping available

2 FERRO AND LAZZARINI

One Of The Oldest "Furnaces" of Murano

- This shop features the highest quality Murano glass since 1929
- Handmade millenary traditional Murano designs to modern pieces
- From hand-cut crystal to creations of the best known artist
- Featuring Venetian chandeliers, lamps, vases and mirrors
- Reknown for offering the highest quality
- Located on the Isle of Murano at the Fondamenta Navagero, 75
- Worldwide shipping is available

4 DALLA OLGA

Olga! ...a Dream of Lace

- Located on the island of Burano
- Dalla Olga specializes in Burano lace handmade with a needle
- Delicate, precise and top quality handmade lace
- Dalla Olga has been a leading lace merchant for over 60 years
- A large shop with a wide range of products at competitive prices
- Tablecloths, sheets, doilies, kids wear, handkerchiefs and more
- Custom-made to order and personalized patterns
- Lace making demonstrations daily



5 RESTAURANT DO FORNI Traditional Venetian Cuisine

- Located in the historical heart of Venice
- One of the most popular, lively and classic meeting places in Venice
- Do Forni restaurant offers different kinds of fish, mollusks and shellfish from the Adriatic Sea
- Famous for its refined interpretation of the Veneto-Italian cooking which combines local meat and vegetables with the international gastronomical art influence

at 181/A



LOOK FOR THE ALL ASHORE LOGO FOR YOUR
RECOMMENDED AND GUARANTEED STORES!

All Ashore

VAT REFUND PROGRAM Value Added Tax (VAT) is a tax refund program in which non-European Union citizens may be entitled to reclaim a portion or all of the tax paid for items purchased in participating stores. Each store's participation in the VAT refund program is discretionary. In most cases, VAT is already added to the purchase price. Please note that regulations and conditions governing the refund of VAT are subject to change. It is the responsibility of the cruise ship guest to inquire about a store's VAT refund program participation and if their purchase qualifies. For information about participating stores listed on this map, please see your Shopping Guide.



AN OVERVIEW OF VENICE

Venice was founded in AD 452, when the inhabitants of Aquileia, Padua (Padova) and other northern Italian cities took refuge on the islands of the lagoon from the Teutonic tribes that invaded Italy during the 5th century. They established their own government, which was headed by tribunes for each of the 12 principal islands. Although nominally part of the Eastern Roman Empire, Venice was virtually autonomous.

In 697, the Venetians organized Venice as a republic under an elected doge. Internal dissension disturbed the course of government during the following century, but the threat of foreign invasion united the Venetians. Attacks by Saracens in 836 and by the Hungarians in 900 were rebuffed. Venice signed a commercial treaty with the Saracens, initiating the Venetian policy of trading with the Muslims rather than fighting them. The Crusades and the resulting development of trade with Asia led to the establishment of Venice as the greatest commercial center for trade with the East. The republic greatly profited from the partition of the Byzantine Empire in 1204 and became politically the strongest European power in the Mediterranean region.

The growth of a wealthy aristocracy gave rise to an attempt by the nobles to acquire political dominance. In the 13th and 14th centuries Venice was involved in a series of wars with Genoa, its chief commercial rival. In the war of 1378-1381, Genoa was compelled to acknowledge Venetian supremacy. Wars of conquest enabled Venice to acquire neighboring territories, and by the late 15th century, the city-state was the leading maritime power in the Christian world. Venice is situated on 120 islands formed by 177 canals in the lagoon between the mouths of the Po and Piave rivers, at the northern extremity of the Adriatic Sea. Because of its historic role as a naval power and commercial center, the city is known as the "Queen of the Adriatic."

A railroad and highway causeway connect Venice with the mainland. Long sand bars, or barrier beaches, on the outer side of the lagoon serve as protection against the sea. The islands on which the city is built are connected by about 400 bridges. The Grand Canal, about 3 km (about 2 mi) long, winds through Venice from northwest to southeast, dividing the city into two nearly equal portions.

Venice is an extraordinary city, an urban landscape so rich that you can't walk for a minute without coming across something that is worth a stop.

IN CASE OF EMERGENCY...

Venice: Port Agent – Hugo Trumpy
Via Jacopo Salomonio #3, 30175,
Marghera (Venezia), Italy
Email: agency@hugotrumpyvenice.it
Call: +39-041-5090270 Fax: +39-041-926865

Capt. Piero Bettini: Cell +39-335-7077738
Mauro Furlanetto: Cell +39-388-6058085
Simone Resente: Cell +39-335-7381607
Mirko Furlanetto: Cell +39-335-7381606
Garbis Sahakyan: Cell +39-335-4602325



Shop with confidence at each of the recommended stores. All stores listed on the map have paid a promotional fee and given Disney Cruise Line guests a Buyer's Guarantee valid for 60 days after purchase. This guarantee is valid for repair or exchange. Please note the following conditions that apply to the guarantee: Guest negligence or buyer's regret is excluded. Only appraisals from independent, accredited graduate gemologists not affiliated with any retail jeweler will be considered. Electronics and watches requiring service must be returned by the consumer to the respective manufacturer. All purchases, including fragile items, must be checked before leaving the store. Do not mail merchandise without prior authorization. Guests are responsible for postage and appraisal costs. PPI Group, 6261 NW 6th Way, Suite 100, Ft. Lauderdale, FL 33309, Customer Service: 1.888.774.4768 or 954.377.7777, email: Service@ppigroup.com European guests may contact: rcentofanti@ppigroup.com, +39 338 8687581.