

AT A GLANCE

Capital:
Rhodes

Location:
It is situated 226 miles east-south-east
from mainland Greece

Population:
115,490 (2011 census)

Language:
Greek

Currency:
Euro

Banking:
Banks are open Monday to Friday, 8:00am - 2:00pm and
some Banks are open in the evenings, 5:00pm - 7:30pm
and on Saturday mornings

Post Office:
The main Post Office is located at Mandraki, opposite the
church of the Annunciation. It is open Monday to Friday,
8:00am - 8:00pm as well as Saturdays 8:00am - 3:00pm.

Transportation:
Taxis are available.

Browse your Destination Guide
(found in your stateroom)
for more details.

PORT ADVENTURERS...

Check your ticket for the correct
meeting time and location of your tour.
Your Port Adventures Team will direct
you to transportation.

DON'T FORGET YOUR...

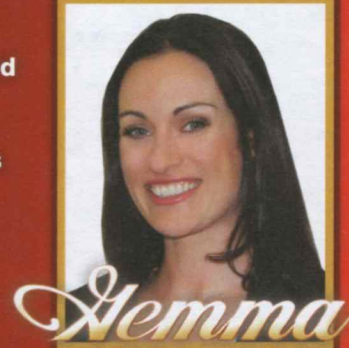
Photo ID and Key to the World Card as
well as Cash and/or Credit Cards.
Do you have your VIP cards?



CHANNEL 26-6...

Watch channel 26-6 for
insider tips on how to spend
your free time, before or
after your tour and where
to find the best local goods
ashore! Stop by Gemma's
desk for more information
to help create the best
experience for you and
your family!

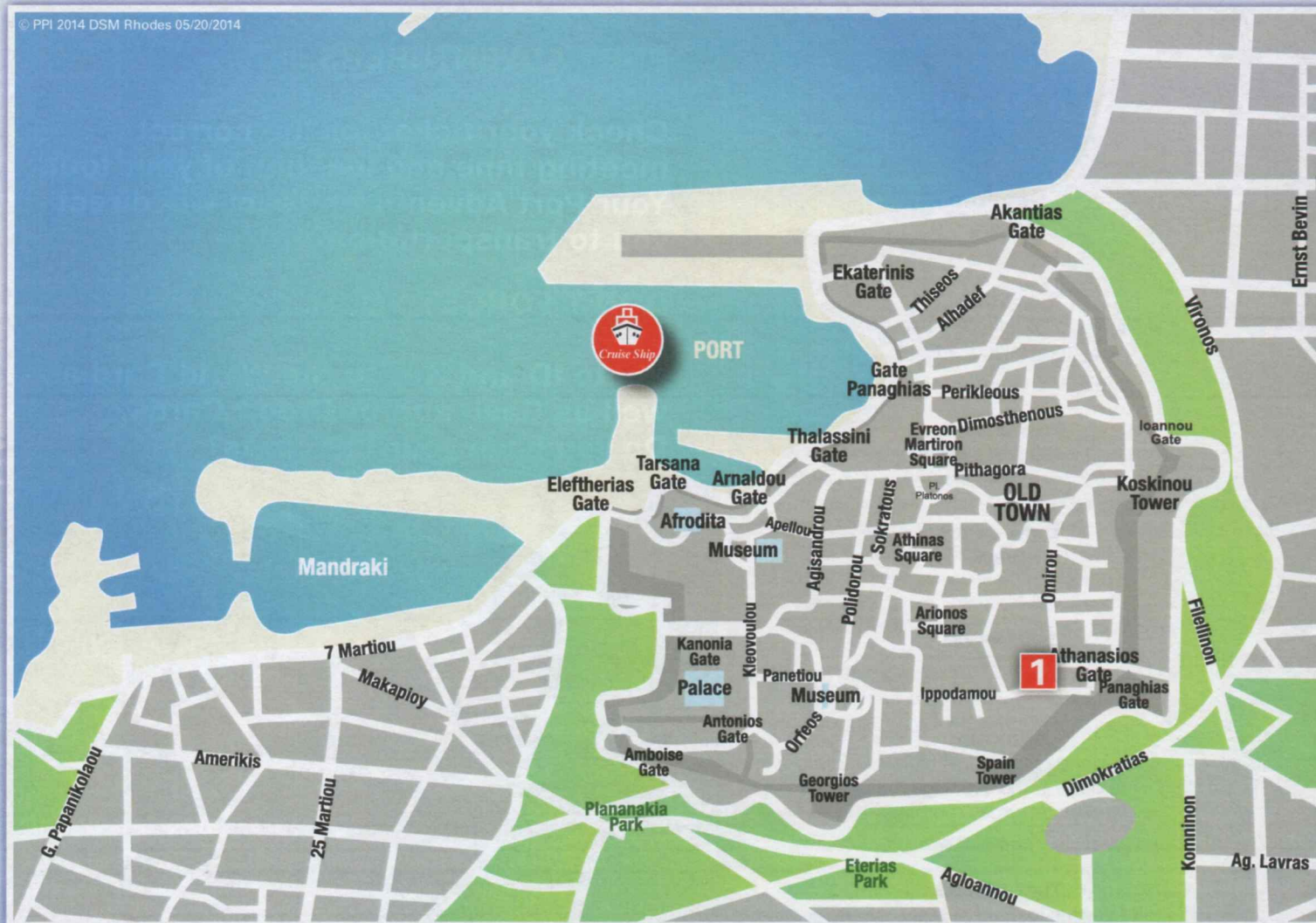
SHOPPING GUIDE



PORT SHOPPING MAP

Rhodes

© PPI 2014 DSM Rhodes 05/20/2014



LOOK FOR THE ALL ASHORE LOGO FOR YOUR
RECOMMENDED AND GUARANTEED STORES!

VAT REFUND PROGRAM Value Added Tax (VAT) is a tax refund program in which non-European Union citizens may reclaim a portion or all of the tax paid for items purchased in participating stores. Each store's participation in the VAT refund is discretionary. In most cases, VAT is already added to the purchase price. Please note that regulations and conditions governing the refund of VAT are subject to change. It is the responsibility of the cruise ship guest to inquire about a store's VAT refund participation and if their purchase qualifies. For information about participating stores listed on this map, please see your

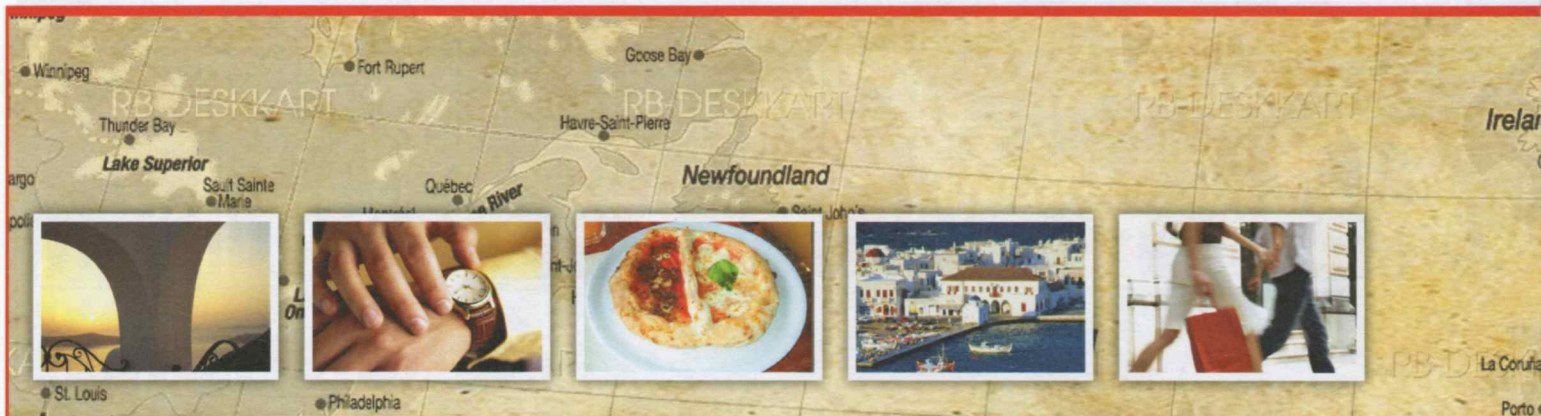


1 LA MAGIA

Greek Handmade Jewelry and Sculptures since 1992

- Family owned store located in Omirou 83 Street, Old Town
- Amazing handmade jewelry in silver, silver plated, gold and titanium
- All of our ceramics are handmade using typical Greek designs
- Stop by to see our extensive selection of artwork
- Featuring jewelry from twelve of our best Greek designers
- Great shop with traditional as well as contemporary pieces

Notes



AN OVERVIEW OF RHODES

Rhodes is an island in Greece located in the eastern Aegean Sea. It is the largest of the Dodecanese islands in terms of both land area and population, with a population of 115,490 (2011 census) and also the island group's historical capital. Administratively the island forms a separate municipality within the Rhodes regional unit, which is part of the South Aegean region. The principal town of the island and seat of the municipality is Rhodes. The city of Rhodes had 50,636 inhabitants in 2011. It is located northeast of Crete, southeast of Athens and just off the Anatolian coast of Turkey. Rhodes' nickname is the island of the Knights.

Historically, Rhodes was famous worldwide for the Colossus of Rhodes, one of the Seven Wonders of the Ancient World. The Medieval Old Town of the City of Rhodes has been declared a World Heritage Site. Today, it is one of the most popular tourist destinations in Europe. Historical sites on the island of Rhodes include the Acropolis of Lindos, the Acropolis of Rhodes with the Temple of Pythian Apollo and an ancient theatre and stadium, ancient Ialysos, ancient Kamiros, the Governor's Palace, Rhodes Old Town (walled medieval city), the Palace of the Grand Masters, Kahal Shalom Synagogue in the Jewish Quarter, the Archeological Museum, the ruins of the castle of Monolithos, the castle of Kritinia, St. Catherine Hospice and Rhodes Footbridge.

The island of Rhodes is shaped like a spearhead, 49.5 miles long and 24 miles wide, with a total area of approximately 541 square miles and a coastline of approximately 137 miles. The city of Rhodes is located at the northern tip of the island, as well as the site of the ancient and modern commercial harbors. The main air gateway (Diagoras International Airport, IATA code: RHO) is located 9 miles to the southwest of the city in Paradisi. The road network radiates from the city along the east and west coasts.

IN CASE OF EMERGENCY...

Rhodes Port Agent: Inchcape Shipping Services

3, Agiou Dionysiou Street
Piraeus, Greece 18545

Note: Inchcape Shipping Services Satellite Office
is in Piraeus Cruise Terminal A

Call +30-210-4146600 Fax +30-210-4224910

Cruise Vessel Operations – John Efstathiou

Email john.efstathiou@iss-shipping.com

Call +30-210-4146662

Cell +30-697-2288008



Shop with confidence at each of the recommended stores. All stores listed on the map have paid a promotional fee and given Disney Cruise Line guests a Buyer's Guarantee valid for 60 days after purchase. This guarantee is valid for repair or exchange. Please note the following conditions that apply to the guarantee: Guest negligence or buyer's regret is excluded. Only appraisals from independent, accredited graduate gemologists not affiliated with any retail jeweler will be considered. Electronics and watches requiring service must be returned by the consumer to the respective manufacturer. All purchases, including fragile items, must be checked before leaving the store. Do not mail merchandise without prior authorization. Guests are responsible for postage and appraisal costs. PPI Group, 6261 NW 6th Way, Suite 100, Ft. Lauderdale, FL 33309, Customer Service: 1.888.774.4768 or 954.377.7777, email: Service@ppiigroup.com
European guests may contact: rcntofanti@ppiigroup.com, +39 338 8687581.