



## AT A GLANCE

**Capital:**  
Athens

**Location:**  
Southern most tip of Greece

**Population:**  
3,752,973

**Language:**  
Greek

**Currency:**  
Euro

**Banking:**  
Bank opening hours are Monday to Thursday  
8:00am to 2:30pm, Friday 8:00am to 2:00pm.

**Post Office:**  
Most post offices are open Monday to Friday  
from 7:30am-4:00pm. Many post offices are at their  
busiest from about midday until closing time. Larger  
post offices may have longer opening hours.

**Transportation:**  
Bright yellow taxis are available.

Browse your Destination Guide  
(found in your stateroom)  
for more details.

## PORT ADVENTURERS...

Check your ticket for the correct  
meeting time and location of your tour.  
Your Port Adventures Team will direct  
you to transportation.

## DON'T FORGET YOUR...

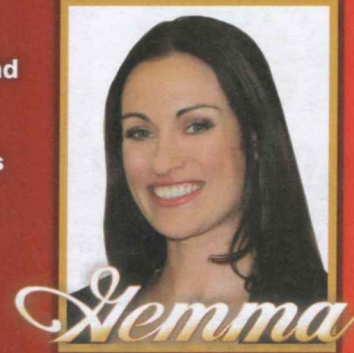
Photo ID and Key to the World Card as  
well as Cash and/or Credit Cards.  
Do you have your VIP cards?



## CHANNEL 26-6...

Watch channel 26-6 for  
insider tips on how to spend  
your free time, before or  
after your tour and where  
to find the best local goods  
ashore! Stop by Gemma's  
desk for more information  
to help create the best  
experience for you and  
your family!

### SHOPPING GUIDE

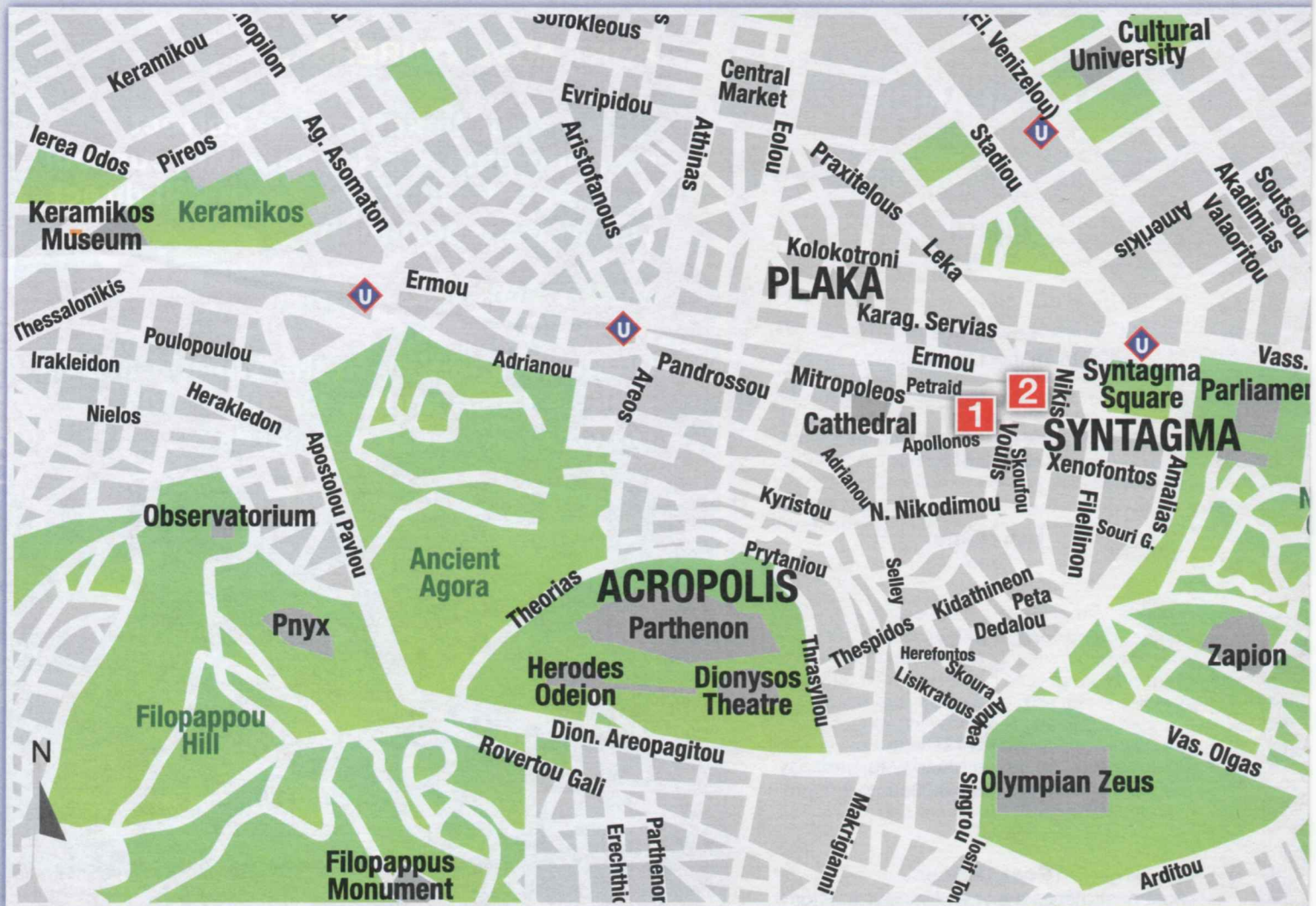




# PORT SHOPPING MAP

## Athens

© PPI 2014 DSM Pireus/Athens English 05/20/2014



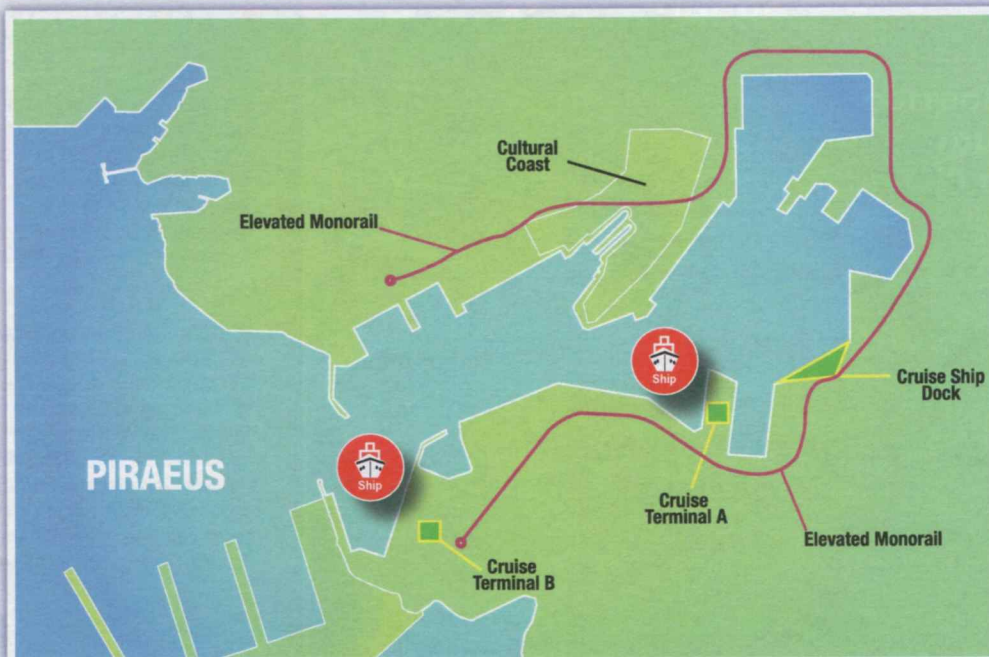
LOOK FOR THE ALL ASHORE LOGO FOR YOUR  
RECOMMENDED AND GUARANTEED STORES!

**VAT REFUND PROGRAM** Value Added Tax (VAT) is a tax refund program in which non-European Union citizens may be entitled to reclaim a portion or all of the tax paid for items purchased in participating stores. Each store's participation in the VAT refund program is discretionary. In most cases, VAT is already added to the purchase price. Please note that regulations and conditions governing the refund of VAT are subject to change. It is the responsibility of the cruise ship guest to inquire about a store's VAT refund program participation and if their purchase qualifies. For information about participating stores listed on this map, please see your Shopping Guide.





# Piraeus



## 1 LITHOS BY MICHELE

### *Greek-American Jewelry Designer*

- Conveniently located at Mitropoleos 20
- Creative handmade 18kt and 22kt jewelry with gem stones
- Famous Black Platinum Collection, granulation and filigree techniques
- Colorful enamel pieces, original Leo Pizzo designs
- Special care taken to find the perfect piece for each customer, making holidays more fun and memorable
- Recommended by the U.S. Embassy

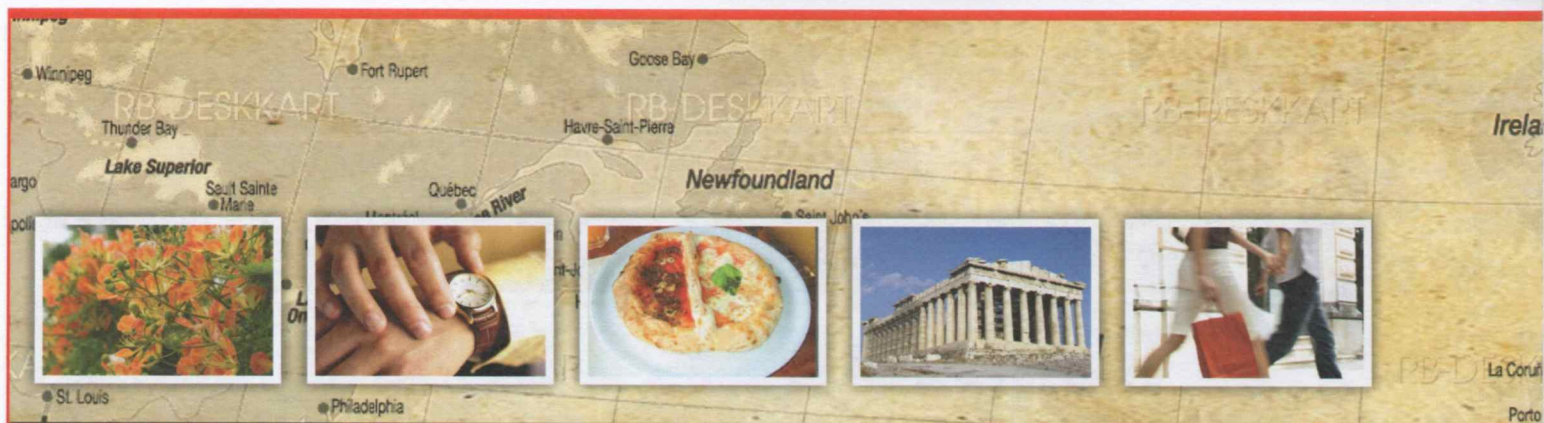
## 2 O TZITZIKAS KI O MERMIGAS

### *Traditional and New Age Cuisine*

- Centrally located near the Acropolis and Suntagma metro station
- Authentic regional Greek cuisine made from fresh ingredients
- Tasty and authentic Greek flavors
- Special Greek traditional mezedes (tapas)
- Good wine selection available
- Children's Menu available

Notes





© PPI 2014 DSM Piraeus/Athens

## IN CASE OF EMERGENCY...

**Rhodes Port Agent:**  
**Inchcape Shipping Services**

3, Agiou Dionysiou Street  
Piraeus, Greece 18545

Note: Inchcape Shipping Services Satellite Office  
is in Piraeus Cruise Terminal A

Call 011+30-210-4146600 Fax 011+30-210-4224910

Cruise Vessel Operations – John Efstathiou

Email [john.efstathiou@iss-shipping.com](mailto:john.efstathiou@iss-shipping.com)

Call 011+30-210-4146662

Cell 011+30-697-2288008

## AN OVERVIEW OF ATHENS

Athens. The city with the most glorious history in the world, a city worshipped by gods and people, a magical city. The enchanting capital of Greece has always been a birthplace for civilization. It is the city where democracy was born and most of the wise men of ancient times. The most important civilization of ancient world flourished in Athens and relives through some of the world's most formidable edifices.

Who hasn't heard of the Acropolis of Athens? Photos and history of the most famous archaeological monument in Europe have drawn the world to visit, causing feelings of admiration in thousands of people. Acropolis is nominated to be one of the seven wonders of modern world. In fact, the trademark of Athens is one of the favorites. The Holy Rock of Acropolis dates back to the 5th century BC, the famous Golden Age of Periklis. Athens met times of bloom and decline, but still shines under the vast sky gazing the future. Still sparkling like the marbles of Parthenon and the limpid white of Pentelic marble.

Athens is situated in the prefecture of Attica and extends to the peninsula that reaches up to Central Greece. It is surrounded by mountains Ymmytos, Pendeli and Parnitha, northwards and eastwards, and the Saronic gulf southwards and westwards. The sun is shining over Athens all year round. The climate is one of the best in Europe, with mild winters and very hot summers, ideal for tourism. It is located just a few kilometers from the port of Piraeus, the central commercial port of the capital, and the shores of southern Attica.

Athens is constantly inhabited since the Neolithic Age. The 5th century was the time of its ultimate bloom, when moral values and civilization surpassed city limits and became the mother land of western civilization. In the centuries that followed, many conquerors tried to take over Athens. In 1834, Athens was chosen to be the capital of the newly established Greek State. The city that now hosts more than 4,5 million people, was constructed around the Acropolis walls. Today it is the political, social, cultural, financial and commercial center of Greece.



Shop with confidence at each of the recommended stores. All stores listed on the map have paid a promotional fee and given Disney Cruise Line guests a Buyer's Guarantee valid for 60 days after purchase. This guarantee is valid for repair or exchange. Please note the following conditions that apply to the guarantee: Guest negligence or buyer's regret is excluded. Only appraisals from independent, accredited graduate gemologists not affiliated with any retail jeweler will be considered. Electronics and watches requiring service must be returned by the consumer to the respective manufacturer. All purchases, including fragile items, must be checked before leaving the store. Do not mail merchandise without prior authorization. Guests are responsible for postage and appraisal costs. PPI Group, 6261 NW 6th Way, Suite 100, Ft. Lauderdale, FL 33309, Customer Service: 1.888.774.4768 or 954.377.7777, email: [Service@ppigroup.com](mailto:Service@ppigroup.com) European guests may contact: [rcentofanti@ppigroup.com](mailto:rcentofanti@ppigroup.com), +39 338 8687581.