



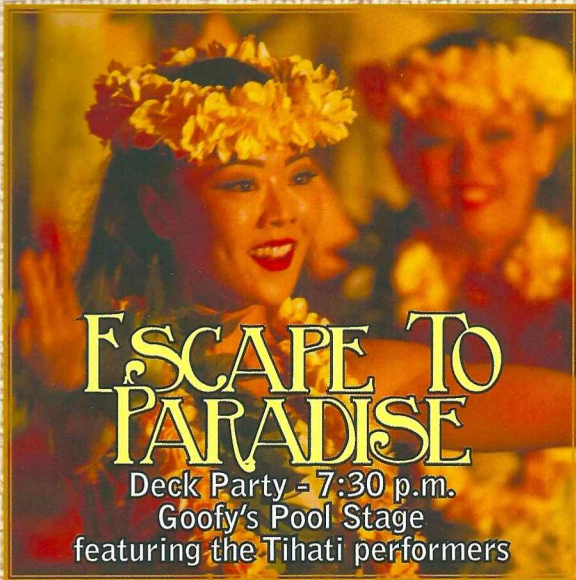
PERSONAL NAVIGATOR

KAHULUI, MAUI: FRIDAY, OCTOBER 19, 2012

Sunrise: 6:23 a.m. Sunset: 5:59 p.m. Evening Attire: Cruise Casual

Ashore: Approx. 6:30 a.m. All Aboard: 9:30 p.m.

Forecast: Sunny Temperature: 85F/29°C



WELCOME TO KAHULUI!

Maui is the most visited of all Hawaiian Islands. It is sparsely populated supporting less than one-tenth of the state's population. It is home to pineapple, sugar cane, cattle ranches, and rain forests. Kahului was a sugar town by 1880; however, real growth has only come during the last 20 years. Also of distinction is Haleakala, the largest dormant volcano in the world, consisting of 30,000 feet of hardened lava rising from the ocean floor capped by a huge crater. Maui is the second largest island in the Hawaiian chain. It is estimated that 50% of the world's humpback whales return to Maui's warm waters where they were born and to mate. Kahului is located on the northern coast of the island on Kahului Bay.

PORT ADVENTURES IMPORTANT INFORMATION

Please check your tour tickets for meeting times and locations. Visit the Port Adventures Desk, Deck 3, Midship for any questions.

PORT AGENT: Ken Inouye: Operations, Incheap Shipping Services, Foreign Trade Zone #9, 521 Ala Moana Blvd, Ste 2256, Honolulu, HI 96813. Office: +1 808 599 8604, Fax: +1 808 599 8603, Mobile: +1 808 520 5943



VISTA SPA

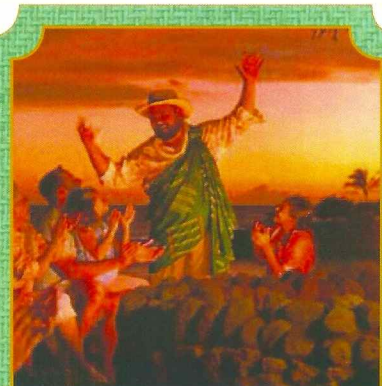
Spa Taster

- 25 minute Back, Neck and Shoulder Massage
- 25 minute Foot and Ankle Massage
- or
- 25 minute Revitalizing Booster Facial
- 50 minutes \$119

Escape To Paradise

7:30 p.m. Goofy's Pool Stage

Enjoy a spectacular presentation of "Escape to Paradise" featuring the vibrant songs and dances of Hawaii and the South Pacific. This high energy and highly interactive performance shares the unique culture, traditions and heritage of Hawaii while showcasing this incredibly talented cast of local performers. A must see event!



HAWAIIAN PRESENTER SPECIAL EVENTS

Sunset Gathering &
Storytelling with Uncle
6:45 p.m. Quiet Cove
(Guests 18 years and over)

Tihati Performers
5:15 p.m. Lobby Atrium

Stargazing with Marcus
10:00 p.m.
Wide World of Sports Deck

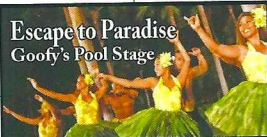

DINNER Come and Eat:
MENU Mai e'ai

DRINK Blue Hawaiian (Alcoholic)
OF THE Coco Mango (Non Alcoholic)
DAY

IMPORTANT NUMBERS

| | |
|-------------------|--------|
| Fire / Security | 7-3001 |
| Medical EMERGENCY | 7-3000 |
| Health Center | 7-1923 |

| | 8:30 | 8:45 | 9:00 | 9:15 | 9:30 | 9:45 | 10:00 | 10:15 | 10:30 | 10:45 | 11:00 | 11:15 | 11:30 | 11:45 | 12:00 | 12:15 | 12:30 | 12:45 | 1:00 | 1:15 | 1:30 | |
|---------------------------|---|------|------|------|------|------|-------|-------|-------|-------|--|-------|---|---------------------|----------------------|--------------------------------|-------|--------------------------------|------|----------|------|----------|
| SPECIAL | Movie: Disney nature: Oceans (G) Funnel Vision | | | | | | | | | | Movie: Brother Bear (G) Funnel Vision | | | | | | | Virtual Tours Funnel Vision | | | | |
| CHARACTER | For detailed Character information, please dial 7-PALS or refer to the information screen in the Lobby Atrium. | | | | | | | | | | | | | | | | | | | | | |
| MOVIES | | | | | | | | | | | | | | | | | | | | | | |
| FUN FOR ALL AGES | Please check your Port Adventures tickets for meeting times and locations | | | | | | | | | | Cruise Staff Coffee Mingle Cove Cafe | | Youth Activities Open House Oceaneer Club <Starts at 9:00am >12:45pm | | | | | | | | | |
| | | | | | | | | | | | | | Cruisin' For Trivia Promenade Lounge | | | | | | | | | |
| | Board games available to play Promenade Lounge and Diversions | | | | | | | | | | | | | | | | | | | | | |
| ADULTS | Friends of Bill W. Cadillac Lounge | | | | | | | | | | | | | | | Cruise Staff Lunch Triton's | | | | | | |
| | Books and magazines available to read Cove Cafe | | | | | | | | | | | | | | | | | | | | | |
| Teens | | | | | | | | | | | | | | | Chillin' in the Vibe | | | | | Smoothie | | |
| Edge | ON Open House | | | | | | | | | | Wii Tournament | | Craft Time | | Checkers Tournament | | | Wii Resort | | | | |
| Out & About | Open House | | | | | | | | | | | | | | | | | | | | | 👉 Sports |
| Oceaneer Club | ON Sliding Fun | | | | | | | | | | Make your own Lei | | | ON Explore the Club | | | | | | | | Tink |
| Oceaneer Lab | Movie Time 6:30 a.m. | | | | | | | | | | Explore the Lab | | | | | Light Lunch | | | | | | |

| | 7:00 | 7:15 | 7:30 | 7:45 | 8:00 | 8:15 | 8:30 | 8:45 | 9:00 | 9:15 | 9:30 | 9:45 | 10:00 | 10:15 | 10:30 | 10:45 | 11:00 | 11:15 | 11:30 | 11:45 | 12:00 | | | |
|------------------|--|----------------|---|------|------|------|------|------|---|------|------|---|-------|-------|--|--|-------|-------------------------------------|-------|-------|-------|--|--|--|
| SPECIAL | Sunset Gathering & Storytelling Quiet Cove | | Escape to Paradise Goofy's Pool Deck Stage | | | | | | Movie: Remember the Titans (PG) Funnel Vision | | | Stargazing >11:00pm Wide World of Sports Deck | | | | | | | | | | | | |
| CHARACTER | | | See some of your favorite Disney friends Strolling outside on Decks 9 & 10 | | | | | | See some of your favorite Disney friends Strolling around the ship | | | For detailed Character information, please dial 7-PALS or refer to the information screen in the Lobby Atrium. | | | | | | | | | | | | |
| MOVIES | | | The Odd Life of Timothy Green (PG) Buena Vista Theatre | | | | | | | | | Finding Nemo (G) Buena Vista Theatre | | | | | | DOLBY 3D | | | | | | |
| FUN FOR ALL AGES | | |  | | | | | | | | |  | | | | | | | | | | | | |
| | | | | | | | | | Family Karaoke Studio Sea | | | | | | Late Night with Balazs Promenade Lounge | | | | | | | | | |
| | | | | | | | | | | | | | | | | | | | | | | | | |
| ADULTS | | | Music & Martinis Cadillac Lounge | | | | | | DJ Justin Under the Stars Quiet Cove | | | | | | | | | | | | | | | |
| | | | Charlston & Disney Promenade Lounge | | | | | | Smooth Sounds Cadillac Lounge | | | | | | Easy Does It Cadillac Lounge | | | Late Night Piano Cadillac Lounge | | | | | | |
| Teens | Activities are happening all day in the Vibe | | | | | | | | Pump It Up! @ Vista Spa Meet at Vibe | | | | | | | | | Vibe open 'til 2:00 a.m. | | | | | | |
| Edge | Chillin' in Edge | | Stop the Boat | | | | | | Wipeout Challenge | | | Shout About Movies | | | | Arcade 12-1a.m./Chillin' in the Edge 'til 1 a.m. | | | | | | | | |
| Out & About | | | | | | | | | | | | | | | | | | | | | | | | |
| Oceaneer Club | OH Playdough Fun | OH Sliding Fun | OH Color Creations | | | | | | Junkanoo Jam | | | Late Night Movie | | | | | | | | | | | | |
| Oceaneer Lab | Evening Movie | | | | | | | | ♥ Disney's Scene It! | | | | | | The Oceaneer Lab closes at 10:00pm. | | | | | | | | | |

YOUTH ACTIVITIES

HOURS OF OPERATION

| | | |
|-----------------------------|------------------------|---------|
| Flounder's Reef Nursery | 6:00 a.m. - 11:00 p.m. | 7-18500 |
| Oceaner Club Open House | 9:00 a.m. - 12:45 p.m. | 7-1440 |
| Secured Program | 1:00 p.m. - 6:00 p.m. | 7-1440 |
| Open House | 6:15 p.m. - 8:45 p.m. | 7-1440 |
| Secured Program | 9:00 p.m. - 12:00 a.m. | 7-1440 |
| Oceaner Lab Secured Program | 6:30 a.m. - 10:00 p.m. | 7-1445 |
| Edge | 9:00 a.m. - 1:00 a.m. | 7-5810 |
| Vibe | 12:00 p.m. - 2:00 a.m. | 7-1456 |

PHONE



YOUTH ACTIVITIES OPEN HOUSE

Explore the Club at 11:00 a.m.

CLUBHOUSE SERIES

Little Einsteins at 3:00 p.m. - Blast off to a mission of dancing, singing, playing, and conducting based on Disney's Little Einsteins animated cartoon.

STORYBOOK SERIES

Where's Tink? at 1:30 p.m. - Tinkerbell is hiding and we need your help to follow clues around Captain Hook's ship to find her.

JUMP UP! SERIES

Junkanoo Jam at 9:15 p.m. - Singing, dancing and playing instruments. It's a jam of fun and sounds.

CREATE & INVENT SERIES

Hawaiian Crafts at 1:30 p.m. - Make a beautiful Hawaiian islands themed craft to celebrate your exciting cruise!

IN THE SPOTLIGHT SERIES

Karaoke at 6:00 p.m. - Sing the night away in our very own version of karaoke.

SOLVE IT! SERIES

Disney Scene It at 8:45 p.m. - Test your Disney knowledge with your friends in this interactive game including scenes from your favourite Disney movies.

OUT AND ABOUT SERIES - Recommended for ages 8-14.

All Sorts of Sports at 1:30p.m. Join us at the Sports Deck for some fun.

YOUTH ACTIVITIES OPEN HOUSE

Open House today is in the Oceaner Club from 9:00 a.m. until 12:45 p.m. and from 6:15 p.m. until 8:45 p.m. It is an opportunity for all to come and participate in a variety of exciting activities and free time. During these times, secured programming will still be offered in the other space for those looking to check their children into care.

DINE & PLAY

A convenience for families dining at 8:15 p.m., our Youth Activities Counselors will be available at 9:15p.m. at the entrance of Triton's, Parrot Cay and Animator's Palate dining rooms to bring registered children to join the fun in the Oceaner Club and Oceaner Lab.

ACTIVITIES FOR 11-14 YEAR OLDS

Deck 2 Midship (7-5810)

ARCADE NIGHT AT 12:00 AM

The arcade is yours! Come and have some exclusive time in the arcade with some of your new friends.

ACTIVITIES FOR 14-17 YEAR OLDS

Deck 11 Midship (7-1456)

PUMP IT UP! AT 9:00 PM

Use the state-of-the-art fitness equipment from Vista Spa while listening to your favorite music.

FUN FOR ALL AGES

CRUISE STAFF COFFEE MINGLE

11:00 a.m. Cove Cafe

Join your Cruise Staff for coffee and a little mingling fun. Cove Cafe is your place to socialise.

CRUISIN' FOR TRIVIA

11:45 p.m. Promenade Lounge

Navigate your way through the depths of all knowledge with our testing trivia voyage with your Cruise Staff.

CHARADES

2:00 p.m. Promenade Lounge

Join your Cruise Staff as you become the star of the show.

DISNEY DISCO

5:15 p.m. Promenade Lounge

Be a dancing superstar when you and your family take to the floor and dance along to your favorite tunes.

ESCAPE TO PARADISE

7:30 p.m. Goofy's Pool Stage

Enjoy a spectacular presentation of "Escape to Paradise" featuring the vibrant songs and dances of Hawaii and the South Pacific. This high energy and highly interactive performance shares the unique culture, traditions and heritage of Hawaii while showcasing this incredibly talented cast of local performers. A must see event!



CHARACTER APPEARANCES

Catch Mickey and all his Pals in their Hawaiian best as they stroll around the ship starting at 9:45 p.m.

ADULT EXCLUSIVE ENTERTAINMENT

CRUISE STAFF LUNCH

12:30 p.m. Triton's

Come dine with your Cruise Staff this lunchtime and enjoy your meal with a side of chatter.

PICTIONARY

3:00 p.m. Promenade Lounge

Join your Cruise Staff and test your drawing skills with some fun games of pictionary!

SUNSET GATHERING AND STORYTELLING

6:45 p.m. Quiet Cove

Enjoy favorite Hawaiian stories that will be brought to life by Uncle Aito. As the sun sets, enjoy Uncle's conch blowing and Hawaiian chants to welcome the night and say farewell to the day.

COCKTAILS AND PIANO WITH BALAZS

7:30, 9:45 & 10:45 p.m. Promenade Lounge

Join pianist Balazs Peci and unwind this evening with the best in melodic and musical tunes.

PIANO AND VOCAL FAVORITES

7:30, 9:30, 10:30 & 11:30 p.m. Cadillac Lounge

Enjoy piano favorites with Laurence J. Blackler featuring 'Smooth Sounds' at 9:30 p.m. and a special set entitled 'Easy Does It' at 10:30 p.m.

MORE TO ENJOY WHILE ONBOARD

VISTA ART GALLERY

We invite you to stroll through the Vista Art Gallery, Deck 4 Midship, to view a selection of art brought onboard specifically for the Disney Wonder Hawaii sailing. We will be closed during our calls in Kahului and will re-open at 6:30 p.m. in Nawiliwili when a Gallery Host will be available to assist you.

SURF @ SEA

\$0.75 per minute or save money by buying blocks of time. \$55 for 100 minutes, \$100 for 250 minutes and \$150 for 500 minutes. Wireless information sheets are available at Guest Services, Deck 3, Midship. Due to the technology involved and satellite connectivity, the onboard internet service will be noticeably slower than you may be accustomed to and may at times be interrupted or unavailable.

EARLY FLIGHT DEPARTURES

Guests with flights departing Los Angeles prior to 12:30 p.m. are kindly asked to notify Guest Services located on Deck 3, Midship no later than 12:00 noon on Friday 26th October.

OPERATING HOURS

| | | | |
|----------------------------------|------------------------|---|------------------------|
| <i>Disney Vacation Club Desk</i> | CLOSED | <i>Port Shopping Guide</i> | 6:00 P.M. - 8:00 P.M. |
| <i>Future Cruise Desk</i> | 7:00 P.M. - 9:00 P.M. | <i>Preludes (SNACKS) OPEN DURING SHOW TIMES</i> | |
| <i>Goofy's Pool</i> | 6:00 A.M. - 6:00 P.M. | <i>Quarter Masters</i> | 24 HOURS |
| <i>Guest Services Desk</i> | 24 HOURS | <i>Quiet Cove Pool</i> | 6:00 A.M. - 12:00 A.M. |
| <i>Health Center</i> | 9:30 A.M. - 11:00 A.M. | <i>Radar Trap</i> | CLOSED |
| | 4:30 P.M. - 7:00 P.M. | <i>Shutters</i> | 7:30 P.M. - 11:00 P.M. |
| <i>Mickey's Mates</i> | CLOSED | <i>Treasure Ketch</i> | CLOSED |
| <i>Mickey's Pool</i> | 8:00 A.M. - 10:00 P.M. | <i>Vista Gallery</i> | CLOSED |
| <i>Mickey's Slide</i> | 1:00 P.M. - 5:30 P.M. | <i>Vista Spa and Salon</i> | 8:00 A.M. - 10:00 P.M. |
| <i>Mickey Splash Zone</i> | 8:00 A.M. - 8:00 P.M. | <i>Vista Spa Fitness Center</i> | 6:00 A.M. - 10:00 P.M. |
| <i>Port Adventures Desk</i> | 7:00 A.M. - 10:00 A.M. | | |
| | 7:00 P.M. - 8:30 P.M. | | |

Dining Hours

Consumers who order raw or partially cooked, ready-to-eat food of animal origin, are hereby informed that the food is not sufficiently cooked to ensure its safety.

BREAKFAST

| | |
|-----------------------------|------------------------|
| <i>Goofy's Galley</i> | 5:30 A.M. - 9:00 A.M. |
| <i>Beach Blanket Buffet</i> | 6:00 A.M. - 10:15 A.M. |
| <i>Parrot Cay Buffet</i> | 6:30 A.M. - 10:45 A.M. |
| <i>Tritons (ALA CARTE)</i> | 8:00 A.M. - 9:30 A.M. |

LUNCH

| | |
|--|------------------------|
| <i>Pluto's Dog House</i> | 10:45 A.M. - 6:00 P.M. |
| <i>Goofy's Galley</i> | 10:45 A.M. - 7:00 P.M. |
| <i>Pinocchio's Pizzeria</i> | 10:45 A.M. - 6:00 P.M. |
| <i>Land & Sea Beach Blanket Buffet</i> | 12:00 P.M. - 2:00 P.M. |
| <i>Tritons</i> | 12:00 P.M. - 1:30 P.M. |

DINNER

| | |
|-----------------------------|-----------------------|
| <i>Animator's Palate*</i> | 5:45 P.M. & 8:15 P.M. |
| <i>Tritons*</i> | 5:45 P.M. & 8:15 P.M. |
| <i>Parrot Cay*</i> | 5:45 P.M. & 8:15 P.M. |
| <i>Pluto's Dog House</i> | 6:00 P.M. - 9:00 P.M. |
| <i>Beach Blanket Buffet</i> | 7:00 P.M. - 9:00 P.M. |

* Pre-arranged seating assignments

LATE NIGHT SNACKS

| | |
|------------------------------------|-------------------------|
| <i>Goofy's Galley (ICE-CREAM)</i> | 7:00 P.M. - 11:00 P.M. |
| <i>Pinocchio's Pizzeria</i> | 9:30 P.M. - 12:00 A.M. |
| <i>Promenade Lounge (Families)</i> | 11:00 P.M. - 12:00 A.M. |
| <i>Diversions (Adults)</i> | 11:00 P.M. - 12:00 A.M. |

ADDED FEATURES

| | |
|-------------------------|----------|
| <i>Beverage Station</i> | 24 HOURS |
| <i>Room Service</i> | 24 HOURS |

Bar Hours

Bars are solely for adults 18 and older, except during scheduled family events. Adults must be 21 and older to consume alcoholic beverages.

ON DECK

| | |
|------------------------------------|-------------------------|
| <i>Cove Cafe</i> | 5:30 A.M. - 12:00 A.M. |
| <i>Outlook Cafe & Wine Bar</i> | 5:30 P.M. - 12:00 A.M. |
| <i>Pinocchio's Bar</i> | 9:00 A.M. - 12:00 A.M. |
| <i>Pluto's Dog House Bar</i> | 10:30 A.M. - 6:00 P.M. |
| <i>Signals Bar</i> | 10:00 A.M. - 11:00 P.M. |

LOUNGES

| | |
|-------------------------|-------------------------|
| <i>Preludes</i> | OPEN DURING SHOW TIMES |
| <i>Promenade Lounge</i> | 7:30 A.M. - 12:00 A.M. |
| <i>Studio Sea</i> | OPEN DURING EVENTS ONLY |

Route 66

(18 AND OLDER AFTER 9:00 P.M.)

| | |
|--|---|
| <i>Cadillac Lounge (GUESTS 18 AND OLDER)</i> | 5:30 P.M. - 12:00 A.M. |
| <i>Diversions</i> | 4:00 P.M. - 12:00 A.M. |
| <i>Wavebands</i> | OPEN DURING SCHEDULED EVENTS OPEN TILL 2:00 A.M. |

PHOTO KIOSKS



Did you know you can view your cruise memories on the photo kiosks in Shutters on Deck 4, Aft? Available 24 hours a day.



BOOK YOUR NEXT DISNEY CRUISE LINE VACATION TODAY AND SAVE!

Don't waste time! Book your next cruise today and you'll save 10%, receive up to a \$200 onboard credit, and pay a reduced deposit! Visit the Future Cruise Sales Desk, Midship Deck 4 or call 7-2848.

VISTA SPA MENS' TIME



Choose any 3 of the following treatments for \$99: Express Shave, Scalp and Neck Massage, Hand and Arm Massage, Men's Deep Cleansing Facial, Precision Hair Cut.

SHOPPING IN PARADISE

Join Maxine, your Port and Shopping guide, in Lahaina at Passman Galleries, location #1a on your port map from 11:00 a.m. - 1:00 p.m. for the Black Coral Hawaiian shopping party. Receive a fresh flower lei and local treats upon arrival!

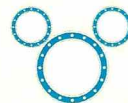
Disney Cruise Line



Welcome to Kahului! Come and find out what adventure awaits here in Maui's largest city! Set sail onboard Maui's premier ocean sailing catamaran and experience the beauty of a Maui sunset on out Trilogy Sunset Sail! Or experience an authentic Hawaiian Luau at the Old Lahaina Luau. Come down and see us at the Port Adventures Desk, Deck 3 Midship as space is limited!

SHOPPING

Mickey's Mates



Shops Closed in Kahului and Reopen 6:30 p.m. in Nawiliwili

Certain sundry items are available at Guest Services. Please check your Personal Navigator for upcoming promotions.

Maui Divers Trunk Show
A voyage to the South Pacific isn't complete without digging for your own island treasure. Choose from exotic Black Tahitian Pearls, South Sea Golden pearls and more in a broad selection from Maui Divers Jewelry. Available on Saturday 20th at 6:30 p.m.

IMPORTANT INFORMATION

Security Notice

All Guests (including Children) who wish to disembark or embark the ship are required to present their Key to the World card at the gangway. A photo ID is also required for those Guests who are 18 years of age or older. Guests under the age of 18 are required to have a Parent, Guardian or other responsible adult sign an authorization form at the time it is given out if they wish to go ashore unaccompanied. Authorization forms are available at the gangways and Guest Services.

Cold and Flu Reminder

Please wash hands frequently and thoroughly, particularly before meals. Contact the Health Center by dialing 7-1923, should anyone in your party become ill.

Corridor Quiet Hours

As a courtesy to all our Guests, please recognize quiet hallway hours from 10:00 p.m. til 8:00 a.m.

Inclement Weather

For the safety of all Guests, outdoor events may be changed due to unforeseen weather conditions.

Environmental Message

With Disney's commitment to the Environment please refrain from throwing anything over the Ship's side. Thank you.

No Reserved Seats Policy

As a courtesy to all Guests we kindly advise that the saving of seats is not permitted in the Walt Disney Theatre, and the saving of the sun loungers is not permitted on Deck 9 and 10. Items left unattended will be returned to lost and found at Guest Services Deck 3 Midship.

Smoking

For the comfort of our guests the following areas are designated as Smoking areas: Open decks on the Starboard Side (excluding Mickey Pool area). Smoking is not permitted on Deck 4, Starboard from 6:00am to 6:00pm. Smoking is prohibited in all guest staterooms. Guests found smoking in their staterooms will be charged a \$250 stateroom recovery fee.

Internet

Due to the technology involved and satellite connectivity, the onboard internet service will be noticeably slower than you may be accustomed to and may at times be interrupted or unavailable.

Walt Disney Theatre

Theatrical performances may use artificial fog, strobe lights, pyrotechnics and other special effects. For the safety of our performers and the comfort of those around you, photography and video recording is prohibited.

Verandah Safety

Please do not leave any combustible materials on your balcony when not present in your stateroom for safety reasons.