

PERSONAL NAVIGATOR

WEDNESDAY, JULY 2, 2014

Sunrise: 6:02 a.m. Sunset: 8:44 p.m.
Evening Attire: Cruise Casual or Pirate
All Ashore: 7:15 a.m.
All Aboard: 2:45 p.m.
Today: Sunny High: 77°F/25°C
Tomorrow: Sunny High: 85°F/29°C

MYKONOS, GREECE

SHOWTIME FEATURING THE MUSIC OF STRINGFEVER

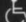
WALT DISNEY THEATRE

Deck 4, Forward

6:30 p.m. & 8:45 p.m.

As a courtesy to all Guests, we kindly advise that the saving of seats is **not** permitted in the Walt Disney Theatre.



 Assistance available at the entrance to the Walt Disney Theatre 30 minutes prior to show time.

Welcome To Mykonos, Greece

Mykonos is one of the Cyclades, a group of Greek islands in the Aegean Sea. Mykonos' early human inhabitants were Carians, followed by Ancient Egyptians, Phoenicians, Cretans and Ionians.

Mykonos is, with Santorini and Crete, the most famous and popular Greek island and attracts thousands of visitors every year.

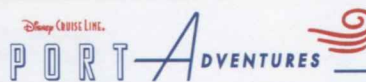
The Greek Island is famous for its cosmopolitan atmosphere, its exciting nightlife that is compared to Ibiza, its picturesque Cycladic capital full of Mykonian whitewashed houses and blue domed churches, its luxury hotels, the sightseings and its magnificent sandy beaches.

In ancient times, Mykonos, due to its proximity to the then highly populated island of Delos (situated about 2 kilometres away), became very important as a supply island and possibly as a getaway location for Delian citizens.



TIME ZONE CHANGE

Remember to turn your clocks
BACK 1 HOUR upon retiring on
WEDNESDAY evening, or first
thing **THURSDAY** morning.



Please check your tickets for meeting times and locations. Visit the Port Adventure's Desk, Deck 3, Midship for any questions.

DINNER MENU

Animator's Palate : Pirates
Carioca's : Pirates
Lumiere's : Pirates

DRINK OF THE DAY

Parrot Song (Non-Alcoholic)
Sunken Treasure (Alcoholic)

IMPORTANT NUMBERS

Fire/Security: 7-3001
Medical Emergency: 7-3000
Health Center: 7-1923

ADULT ACTIVITY HIGHLIGHTS



SENSES SPA FITNESS CLASSES & SEMINARS

Pilates - Senses Spa Fitness Center - 5:00 a.m.
Yoga - Senses Spa Fitness Center - 9:00 a.m.
Group Cycling - Senses Spa Fitness Center - 10:00 a.m.
Eat More to Weigh Less - Senses Spa Fitness Center - 2:30 p.m.
Point of Well Being - Senses Spa Fitness Center - 3:00 p.m.
Complimentary Footprint Analysis -
 Senses Spa Fitness Center - 4:00 p.m.

CLUB 18*21 - SOCIAL

O'Gills Pub, Deck 3, Forward - 5:00 p.m.
 Come and socialize with your fellow cruisers.

CLUB 18*21 - MIXER

Signals, Deck 9, Forward - 10:15 p.m.
 Come to join fellow cruisers your own age at our exclusive Club 18*21 event.

LIVE IRISH MUSIC WITH FULL SET

O'Gills Pub, Deck 3, Forward - 9:45 p.m. & 11:00 p.m.
 Join Full Set as they play traditional Irish music live for your listening pleasure.

MUSIC VIDEO DANCE PARTY

Fathoms, Deck 3, Forward - 10:00 p.m.
 Join your Cruise Staff DJ, and dance the night away to some of the top music videos to hit the charts.

KRAZY KARAOKE

Fathoms, Deck 3, Forward - 11:00 p.m.
 Take to the stage, grab a microphone and sing your favorite tunes with your Club Host and DJ.



FUN FOR ALL AGES HIGHLIGHTS

FAMILY CRAFTS

Promenade Lounge, Deck 3, Aft - 1:45 p.m.
 Create a fun souvenir with your Cruise Staff that is yours to keep.



DISNEY VACATION CLUB GROUP PREVIEW

D Lounge, Deck 4, Midship - 4:30 p.m.
 Want to learn more about taking magical vacations year after year? Please see a Disney Vacation Club representative on Deck 4, Midship, or call 7-2805 from your stateroom phone for more information about our interactive group presentation.

OPA, A GREEK CELEBRATION

Deck Stage, Deck 9, Midship - 4:30 p.m.
 Come to Deck 9 to celebrate Greece with music, dancing, games and fun for the entire family. OPA!

LIVE IRISH MUSIC WITH FULL SET

O'Gills Pub, Deck 3, Forward - 5:30 p.m. & 7:45 p.m.
 Join Full Set as they play traditional Irish music live for your listening pleasure.

PIRATE JACKPOT BINGO

Fathoms, Deck 3, Forward - 7:45 p.m.
 Arrrrgh! Don't miss our 4 cash prize games and your chance to win some Pirate treasure! Great Disney Cruise Line raffle prizes for all ye mateys! Plus your chance to win the Jackpot money early! Arrive dressed as a pirate and receive three free chances for the jackpot game. Pre Sales start 15 minutes prior to game.



A PIRATE'S LIFE FOR ME

D Lounge, Deck 4, Midship - 7:45 p.m.
 Calling all Pirates, we be! If ye have an adventurous spirit or pirate savvy, come spin the "Wheel of Destiny" for a treasure trove of fun be ripe for the takin' in this action packed pirate game show.



THE CHALLENGE OF DAVY JONES

Deck Stage, Deck 9, Midship - 9:45 p.m.
 Join us on deck for an interactive video game experience. You'll be the crew as we find out who is the better Captain... Captain Jack or Captain Barbossa?

YOUTH ACTIVITIES HIGHLIGHTS

DINE & PLAY

As a convenience for families dining at 8:45 p.m., our Youth Activities Counselors will be available at 9:45 p.m. at the entrance of Lumiere's, Carioca's and Animator's Palate to bring registered children to join the fun in Disney's Oceaneer Club and Disney's Oceaneer Lab.



Deck 5, Midship (7-1440)
(3-12 years old)

11:00 a.m. - 12:00 p.m.

ALOHA LUAU

3:00 p.m.

It's party time, Hawaiian style! Come join us for a Luau experience and learn how to dance like Lilo & Stitch.

SO YOU WANT TO BE A PIRATE?

7:15 p.m.

Have you learned about life on the high seas? Do you have what it takes to be a pirate? Join Captain Hook and friends to find out!



Deck 5, Midship (7-1445)
(3-12 years old)

7:00 a.m. - 11:00 p.m.

HATS OFF TO PETER PAN

4:30 p.m.

You'll believe you can fly. All it takes is faith, trust, and pixie dust and a special visit from Peter Pan! Rediscover the magic of Neverland!

A PIRATE'S LIFE FOR ME

8:45 p.m.

Yo ho, yo ho, a Pirate's Life for Me! Aarrgh me mateys! Put your knowledge to the test!



Deck 2, Midship (7-5816)
(11-14 years old)

10:00 a.m. - 1:00 a.m.

ICE CREAM SOCIAL

3:15 p.m.

I scream, you scream, we all scream for ice cream! Make your own frosty treat with your Counselors.

A PIRATE'S LIFE FOR ME

11:30 p.m.

Yo ho, yo ho, a Pirate's Life for Me! Aarrgh me mateys! Put your knowledge to the test!



Deck 11, Midship (7-18517)
(14-17 years old)

12:00 p.m. - 2:00 a.m.

AQUADUNK FUN

8:30 p.m.

Take the plunge as we head up on Deck to ride the AquaDunk!

YOUTH ACTIVITIES OPEN HOUSE

Open House is an opportunity for all to come and participate in a variety of exciting activities and free time in Disney's Oceaneer Club, Disney's Oceaneer Lab, Edge, Vibe, and It's a Small World Nursery throughout the cruise. During these times secured programming will still be offered in the other venues for those looking to check their children into care.

Vibe: 12:00 p.m. - 2:00 p.m.
Edge: 10:30 a.m. - 12:00 p.m.

Disney's Oceaneer Lab: 3:30 p.m. - 4:00 p.m.
Disney's Oceaneer Club: 11:00 a.m. - 2:30 p.m.

PIRATES OF THE CARIBBEAN

Pirates of The Caribbean: Challenge of Davy Jones

9:40 p.m., Deck Stage

Join us on deck for a brand new interactive video game experience. You'll be the crew as we find out who is the better captain... Captain Jack or Captain Barbosa.



Pirates IN The Caribbean 10:00 p.m. Decks 9 & 10 Mark the Spot

It's a Pirate Celebration, me hearties! Yer Disney Friends are all set for a swashbucklin' good time! Hoist yourself to Deck 9 to enjoy a rowdy buccaneer bash we call Pirates IN the Caribbean Deck Party.

(Weather Permitting)

Viewing areas located Deck 9 Midship port side gazebo and next to Pinocchio's Pizzeria port side.

BUENA VISTA THEATRE

Deck 5, Aft Today's Movies



9:00 a.m.
Duration:
2 hrs 23 mins
Rating: PG-13

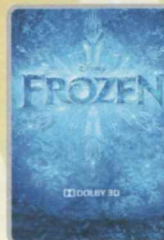


12:00 p.m.
Duration:
2 hrs 31 mins
Rating: PG-13



3:00 p.m.
Duration:
2 hrs 49 mins
Rating: PG-13

DOLBY 3D



6:15 p.m. & 8:30 p.m.
Duration:
1 hr 48 mins
Rating: PG



11:00 p.m.
Duration:
2 hrs 21 mins
Rating: PG-13

MORE TO ENJOY WHILE ONBOARD



PLAN YOUR NEXT GETAWAY NOW

Our 3 and 4 night Bahamian Cruises are a perfect way to get an instant tropical recharge! Departing from Miami or Port Canaveral, most Bahamian cruises include a stop at Disney's private island, Castaway Cay. Visit the Onboard Sales Desk today and ask about our special onboard booking offer.



DISNEY VACATION CLUB

Visit the Disney Vacation Club information desk and ask us about show times where you will learn how to turn every vacation into the vacation of a lifetime.

EARLY FLIGHT INFORMATION

Should you have a flight out of the Venice airport prior to 11:30 a.m. on debarkation morning kindly bring your airline tickets to Guest Services on Deck 3, Midship for additional information and assistance.

Connect @ Sea

We are now offering a NEW and improved Internet service to stay connected on your cruise like no other in the industry! Internet packages range from \$0.25 per MB - \$89.00 (1000 MB package). For more information contact your Connect@Sea Expert or Guest Services onboard.

TRANSPORTATION INFORMATION

If you wish to purchase transfers from the Port of Venice to the Marco Polo Airport please note that the deadline is July 3rd Sea Day before 4:00 p.m. Please visit the Guest Services Desk located on Deck 3, Midship.

LATE FLIGHT INFORMATION

Should you have a flight out of the Venice airport after 3:00 p.m. on debarkation morning, kindly bring your airline tickets to Guest Services on Deck 3, Midship for additional information and assistance.



SALON SANCTUARY

Choose from any of the following:

Scalp massage, European facial, Hand treatment, Sun glow makeover, Conditioning hair treatment, Eye collagen facial, Foot & ankle massage, Neck & shoulder massage.

Choose any:

3 for \$99 (45min) ~ 5 for \$119 (60min) ~ 8 for \$139 (75 min)

Deck 9, Forward - Phone : 7-1465

SOPHIA FIORI DIAMOND TRUNK SHOW

Dazzling Diamonds,
Tantalizing Tanzanite and
many other Jewels.

WHITECAPS

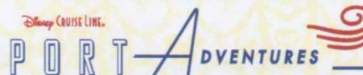
Deck 4, Forward



DISNEY HOLIDAY CARDS!

Share the Magic of your vacation experience with family and friends by sending them an exclusive Disney Cruise Line themed holiday card. Visit Shutters for more details today.

Shutters will be open from 4:00pm - 10:00pm.



Welcome to Mykonos! Drive around the island and stop at the traditional village of Ano Mera. Visit the monastery Panagia Tourliani, built in the 16th century and enjoy a Greek appetizer served in the little square of the village.

This and much more available at Port Adventures Desk, located in Deck 3 Midship. Many memories away... what's your adventure?

SHOPPING

PIRATE PARTY GEAR

Arrgh... It's time to embrace your inner pirate! Make your way to Mickey's Mainsail, Deck 4, Forward, to find a treasure trove of pirate gear! Everything from costumes and apparel to hats and accessories!

PIRATE TRANSFORMATIONS WITH SKULLS & SCURRY

Pirates have taken over the Disney Magic Cruise Ship and are looking for rough scallywags to join their crew! Guests ages 3 and up will have the opportunity to be transformed into plundering pirates with Skulls & Scurry in time for Pirate Night. For more information, please see a Merchandise Host/Hostess at Mickey's Mainsail, Deck 4 Forward.

LIGHT UP THE NIGHT

Glow merchandise is only available on Pirate Night! Don't miss your opportunity to light up the night! Please see a Merchandise Cast Member, Deck 9, on Pirate Night to complete your pirate attire!

CRUISING IN STYLE

Commemorate your cruise with style by visiting White Caps where you'll find a variety of styles from brands such as Debbie Katz. Accessorize your outfit with brand name handbags and jewelry such as a nautical themed Disney Cruise Line® Dooney & Bourke handbag and Swarovski jewelry. Deck 4, Forward.

Due to port regulations, when the ship is docked, the stores will remain closed.

IMPORTANT INFORMATION

Security Notice

All Guests (including Children) who wish to disembark or embark the ship are required to present their Key to the World card at the gangway. A government issued photo ID is also required for all guests. Guests under the age of 18 are required to have a parent, guardian or other responsible adult sign an authorization form at the Guest Service Desk if they wish to go ashore unaccompanied or with any adult from another stateroom.

Sunscreen/Insect Repellent Advisory
Use sunscreen first and protect against mosquito borne illnesses by applying insect repellent on top of sunscreen when going ashore.

Cold and Flu Reminder

Please wash hands frequently and thoroughly, particularly before meals. Contact the Health Center by dialing 7-1923, should anyone in your party become ill.

Inclement Weather

For the safety of all Guests, outdoor events may be changed due to unforeseen weather conditions.

Corridor Quiet Hours

As a courtesy to all our Guests, please recognize quiet hallway hours from 10:00 p.m. til 8:00 a.m.

Environmental Message

With Disney's commitment to the Environment please refrain from throwing anything over the Ship's side. Thank you.

No Reserved Seats Policy

As a courtesy to all Guests we kindly advise that the saving of seats is not permitted in the Walt Disney Theatre, and the saving of the sun loungers is not permitted on Deck 9 and 10. Items left unattended will be returned to lost and found at Guest Services, Deck 3, Midship.

Smoking

For the comfort of our guests, the following areas are designated as smoking areas:

- Deck 10 Forward, Starboard Side
- Deck 9, Forward, Starboard Side at Quiet Cove
- Deck 4, Starboard Side from 6:00 p.m. to 6:00 a.m. only (all of Deck 4 is non-smoking from 6:00 a.m. to 6:00 p.m.)

Smoking is prohibited inside all guest staterooms and on stateroom verandahs. Guests found smoking in their staterooms or on their verandahs will be charged a \$250 stateroom recovery fee.

Walt Disney Theatre

Theatrical performances may use artificial fog, strobe lights, pyrotechnics and other special effects. For the safety of our performers and the comfort of those around you, the use of any photography or video recording device or any electronic equipment is prohibited.

Verandah Safety

Please do not leave any combustible materials on your balcony when not present in your stateroom for safety reasons.

Morning	8:30	8:45	9:00	9:15	9:30	9:45	10:00	10:15	10:30	10:45	11:00	11:15	11:30	11:45	12:00	12:15	12:30	12:45	1:00	1:15	1:30					
FUNNEL VISION	Lilo & Stitch (PG) Funnel Vision						Tinker Bell (G) Funnel Vision						Tinker Bell and the Lost Treasure (G) Funnel Vision													
BUENA VISTA THEATRE	Pirates of the Caribbean: Curse of the Black Pearl (PG-13) Duration: 2 Hours 23 Minutes						Pirates of the Caribbean: Dead Mans Chest (PG-13) Duration: 2 Hours 31 Minutes																			
CHARACTERS																										
FUN FOR ALL AGES													Become Iron Man! 🦾 Oceaneer Club													
ADULTS	Friends of Bill W. Animator's Palate						Yoga Senses Spa Fitness Center		Group Cycling Senses Spa Fitness Center																	
VIBE 14-17 YEARS OLD															Youth Activities Open House 🎮											
EDGE 11-14 YEARS OLD									Youth Activities Open House 🎮						Disney Cruise Line Trivia						Animation Cells					
OCEANEER LAB 3-12 YEARS OLD											Animation Cells 🧠						Lunch									
OCEANEER CLUB 3-12 YEARS OLD											Youth Activities Open House 🎮												Become Iron Man! 🦾			

Afternoon	1:45	2:00	2:15	2:30	2:45	3:00	3:15	3:30	3:45	4:00	4:15	4:30	4:45	5:00	5:15	5:30	5:45	6:00	6:15	6:30	6:45		
FUNNEL VISION						Midtown LIVE Deck Stage				Midtown LIVE Deck Stage		OPA Greek Celebration Deck Stage						Pirates of the Caribbean I (PG-13) Funnel Vision					
BUENA VISTA THEATRE						Pirates of the Caribbean: At World's End (PG-13) Duration: 2 Hours 48 Minutes												Frozen (PG) DOLBY 3D Duration: 1 Hour 48 Minutes					
CHARACTERS													Mickey Lobby Atrium (P)	Minnie Lobby Atrium (P)		Stitch Lobby Atrium (S)	Mickey Lobby Atrium (P)	Chip/Dale Lobby Atrium (S)	Peter Pan Dk 4, Mid				
													Jake Lobby Atrium (S)		Captain Jack Sparrow Preludes				Minnie Lobby Atrium (P)				
FUN FOR ALL AGES	Family Crafts Promenade Lounge				Pirate Palooza D Lounge				Pirate Crafts Promenade Lounge		Pirate Trivia Promenade Lounge		OPA Greek Celebration Deck Stage		Live Irish Music with Full Set O'Gills Pub			Showtime: The Music of String Fever Walt Disney Theatre					
													Disney Vacation Club Group Preview D Lounge			Live Music with Duo Azucar Promenade Lounge							
ADULTS																							
						Eat More to Weigh Less Senses Spa Fitness Center		Point of Well Being Senses Spa Fitness Center			Footprint Analysis Senses Spa Fitness Center					Club 18*21 - Social O'Gills Pub							
VIBE 14-17 YEARS OLD	Open House	Gender Wars								Ice Cream Social							Scavenger Hunt			Disney Cruise Line Trivia			
EDGE 11-14 YEARS OLD	Animation Cells						Ice Cream Social									Sports Deck Fun							
OCEANEER LAB 3-12 YEARS OLD								Open House 🍷					Hats Off to Peter Pan 🧢								Dinner		
OCEANEER CLUB 3-12 YEARS OLD	Youth Activities Open House 🍷						Aloha Luau 🌺																

Evening	7:00	7:15	7:30	7:45	8:00	8:15	8:30	8:45	9:00	9:15	9:30	9:45	10:00	10:15	10:30	10:45	11:00	11:15	11:30	11:45	12:00		
FUNNEL VISION											The Challenge of Davy Jones Funnel Vision		Pirates IN The Caribbean Deck Party Funnel Vision										
BUENA VISTA THEATRE	Frozen (PG) DOLBY 3D Duration: 1 Hour 48 Minutes														Pirates of the Caribbean: On Stranger Tides (PG-13) Duration: 2 Hours 21 Minutes								
CHARACTERS	Jake <small>Lobby Atrium (S)</small>		Captain Jack Sparrow <small>Preludes</small>		Minnie <small>Lobby Atrium (P)</small>																		
		Hook & Smee <small>Dk 4, Mid</small>	Mickey <small>Lobby Atrium (P)</small>	Peter Pan <small>Dk 4, Mid</small>	Chip/Dale <small>Lobby Atrium (S)</small>																		
FUN FOR ALL AGES	Pub Quiz <small>O'Gills Pub</small>		Bingo Pre Sales		Pirate Jackpot <small>Fathoms</small>				 Walt Disney Theatre		The Challenge of Davy Jones <small>Deck Stage</small>		 <small>Deck Stage</small>		DJ Matt <small>Deck Stage</small>								
					A Pirates Live for Me <small>D Lounge</small>																		
					Live Music with Duo Azucar <small>Promenade Lounge</small>																		
ADULTS					Live Irish Music with Full Set <small>O'Gills Pub</small>								Live Music with Full Set <small>O'Gills Pub</small>				Krazy Karaoke <small>Fathoms</small>		DJ Matt <small>Fathoms</small>				
					Live Music with Rodrigo Figueroa <small>Quiet Cove Pool</small>								Rodrigo Figueroa <small>Quiet Cove Pool</small>		Music Video Dance Party <small>Fathoms</small>		Live Music with Full Set <small>O'Gills Pub</small>						
VIBE <small>14-17 YEARS OLD</small>	Youth Activities Open House						AquaDunk Fun		Pirate Prep								Gotcha Registration		A Pirate's Life For Me				
EDGE <small>11-14 YEARS OLD</small>			That's Hilarious					AquaDunk Fun		Scavenger Hunt										A Pirate's Life For Me			
OCEANEER LAB <small>3-12 YEARS OLD</small>			Pirate Prep						A Pirate's Life For Me				Pirates of the Caribbean: Tides of Fortune										
OCEANEER CLUB <small>3-12 YEARS OLD</small>			So You Want to be a Pirate?						Become Iron Man!														

WEDNESDAY, JULY 2, 2014 - MYKONOS, GREECE

BUENA VISTA THEATRE

Deck 5, Aft

DOLBY 3D



9:00 a.m. Duration: 2 hrs 23 mins Rating: PG-13	12:00 p.m. Duration: 2 hrs 31 mins Rating: PG-13	3:00 p.m. Duration: 2 hrs 49 mins Rating: PG-13	6:15 p.m. & 8:30 p.m. Duration: 1 hr 48 mins Rating: PG	11:00 p.m. Duration: 2 hrs 21 mins Rating: PG-13
---	--	---	--	--

Character Appearances

PIRATE MICKEY MOUSE

Lobby Atrium (P)
4:45 p.m., 5:45 p.m.
& 7:30 p.m.

JAKE THE NEVERLAND PIRATE

Lobby Atrium (S)
5:00 p.m. & 7:00 p.m.

PIRATE MINNIE MOUSE

Lobby Atrium (P)
5:15 p.m., 6:15 p.m. & 8:00 p.m.

CAPTAIN JACK SPARROW

Preludes
5:30 p.m. & 7:30 p.m.

CAPTAIN HOOK & MR SMEE

Deck 4, Midship
5:30 p.m. & 7:15 p.m.

PIRATE STITCH

Lobby Atrium (S)
5:30 p.m. & 7:30 p.m.

PIRATE CHIP & DALE

Lobby Atrium (S)
6:00 p.m. & 8:00 p.m.

PETER PAN

Deck 4, Midship
6:15 p.m. & 7:45 p.m.



(P) - Port Side, (S) - Starboard Side

Don't forget your Camera to capture those Magical Moments!
Check here each day for Character appearances.
For detailed Character appearance information, please see the Character Information Board in the Lobby Atrium.
Meet-and-Greets will be advertised for the length of time the line will be open. To avoid disappointment, please meet at start time of appearances.

YOUTH ACTIVITIES THEMED EXPERIENCES

CLUBHOUSE SERIES
focuses on movement and features content which appeals to younger children.

STORYBOOK SERIES
is designed with a strong connection to the Disney classic stories.

JUMP UP! SERIES
includes large group games & movement-oriented activities.

CREATE & INVENT SERIES
will have a tactile focus allowing children to create and admire their work.

IN THE SPOTLIGHT SERIES
focuses on children's stage presence with lots of activities and enthusiasm.

SOLVE IT! SERIES
are less active, but will challenge children with problem/solutions-based activities.

YOUTH ACTIVITIES OPEN HOUSE

Activities for families, adults and children of all ages to enjoy together.

SHIP DIRECTORY

YOUTH ACTIVITIES

DISNEY'S OCEANEER CLUB	DECK 5, MID	11:00 AM - 12:00 PM
DISNEY'S OCEANEER LAB	DECK 5, MID	7:00 AM - 11:00 PM
EDGE	DECK 2, MID	10:00 AM - 1:00 AM
IT'S A SMALL WORLD NURSERY	DECK 5, AFT	7:30 AM - 11:30 PM
VIBE	DECK 10, MID	12:00 PM - 2:00 AM

POOLS

*Children under 12 years of age must have adult supervision in all pools.

AQUADUNK	DECK 10, MID	2:00 PM - 9:00 PM
AQUALAB	DECK 9, AFT	9:00 AM - 9:00 PM
GOOFY'S POOL	DECK 9, MID	10:00 AM - 6:00 PM
NEPHEW'S SPLASH ZONE	DECK 9, AFT	9:00 AM - 6:00 PM
QUIET COVE POOL (18+)	DECK 9, FWD	6:00 AM - 12:00 MID
TWIST 'N' SPOUT	DECK 9, AFT	12:00 PM - 9:00 PM

RECREATION

PORT ADVENTURES DESK	DECK 3, MID	7:00 AM - 9:30 AM
SENSES FITNESS CENTER (18+)	DECK 9, FWD	5:00 AM - 10:00 PM
WIDE WORLD OF SPORTS DECK	DECK 10, FWD	24 HOURS

GENERAL INFORMATION

BUENA VISTA THEATRE	DECK 5, AFT	SHOWTIMES
DISNEY VACATION CLUB DESK	DECK 4, MID	5:00 PM - 10:00 PM
ONBOARD SALES DESK	DECK 4, MID	7:30 AM - 8:30 AM 5:00 PM - 7:00 PM 8:00 PM - 10:00 PM
FUNNEL VISION	DECK 9, MID	SHOWTIMES
GUEST SERVICES	DECK 3, MID	24 HOURS
HAIR BRAIDING	DECK 9, MID	4:00 PM - 6:00 PM 7:00 PM - 10:00 PM
MEDICAL HEALTH CENTER	DECK 1, FWD	9:30 AM - 11:00 AM 4:30 PM - 7:00 PM
PORT & SHOPPING DESK	DECK 3, MID	7:30 PM - 8:30 PM
PRELUDES	DECK 4, FWD	5:30 PM - 9:00 PM
QUARTER MASTERS (ARCADE)	DECK 9, MID	24 HOURS
SENSES SPA AND SALON	DECK 9, FWD	8:00 AM - 10:00 PM
SHUTTERS PHOTO GALLERY	DECK 4, AFT	3:00 PM - 10:00 PM
WALT DISNEY THEATRE	DECK 4, FWD	SHOWTIMES

SHOPPING

MICKY'S MAINSAIL	DECK 4, FWD	4:00 PM - 11:00 PM
QUACKS	DECK 9, MID	
SEA TREASURES	DECK 3, FWD	4:00 PM - 11:00 PM
VISTA GALLERY	DECK 4, MID	4:00 PM - 11:00 PM
WHITE CAPS	DECK 4, FWD	4:00 PM - 11:00 PM

IMPORTANT NUMBERS

Fire/Security: 7-3001
Medical EMERGENCY: 7-3000
Health Center: 7-1923

DINNER MENU

Animator's Palate : Pirates
Carioca's : Pirates
Lumiere's : Pirates

DRINK OF THE DAY

Parrot Song
(Non-Alcoholic)
Sunken Treasure
(Alcoholic)

WEATHER FORECAST

Today: Sunny
High: 76°F/24°C
Tomorrow: Sunny
High: 85°F/29°C

Evening Attire: Cruise Casual or Pirate

DINING & LOUNGES

BREAKFAST

CABANAS	DECK 9, AFT	6:30 AM - 11:30 AM
DAISY'S DE LITES	DECK 9, AFT	6:00 AM - 8:30 AM
LUMIERE'S (À-LA CARTE)	DECK 3, MID	7:30 AM - 9:00 AM

LUNCH

CABANAS	DECK 9, AFT	11:30 AM - 3:00 PM
DAISY'S DE LITES	DECK 9, AFT	11:30 AM - 6:30 PM
LUMIERE'S	DECK 3, MID	12:00 PM - 1:30 PM
PETE'S BOILER BITES	DECK 9, AFT	11:30 AM - 6:30 PM
PINOCCHIO'S PIZZERIA	DECK 9, MID	11:30 AM - 6:30 PM

DINNER

ANIMATOR'S PALATE	DECK 4, AFT	6:15 PM & 8:45 PM
CABANAS TABLE SERVICE	DECK 9, AFT	6:30 PM - 8:30 PM
CARIOCA'S	DECK 3, AFT	6:15 PM & 8:45 PM
LUMIERE'S	DECK 3, MID	6:15 PM & 8:45 PM
PALO (FOR RESERVATIONS CALL 7-8843)	DECK 10, AFT	6:00 PM - 8:30 PM
PETE'S BOILER BITES	DECK 9, AFT	6:30 PM - 10:30 PM

LATE NIGHT SNACKS

PINOCCHIO'S PIZZERIA	DECK 9, MID	10:00 PM - 12:30 AM
CABANAS PIRATE BUFFET	DECK 9, AFT	10:45 PM - 11:30 PM
O'GILLS PUB	DECK 3, FWD	10:45 PM - 11:45 PM
PROMENADE LOUNGE	DECK 3, AFT	10:45 PM - 11:45 PM

ADDED FEATURES

EYE SCREAM	DECK 9, AFT	11:00 AM - 11:00 PM
BEVERAGE STATION	DECK 9, AFT	24 HOURS
ROOM SERVICE	DIAL 7-4330	24 HOURS

ENTERTAINMENT - LOUNGES - BARS

Adults must be 21 and older to consume alcoholic beverages.

AFTER HOURS	DECK 3, FWD	(AFTER 9:00 PM, ADULTS ONLY)
COVE CAFE (18+)	DECK 9, MID	6:00 AM - 12:30 AM
D LOUNGE	DECK 4, MID	SHOWTIMES
FATHOMS (18+)	DECK 3, FWD	7:00 PM - 2:00 AM
FROZONE TREATS	DECK 9, AFT	10:00 AM - 6:00 PM
INTERNET CAFE	DECK 3, AFT	24 HOURS
KEYS (18+)	DECK 3, FWD	5:30 PM - 12:30 AM
O'GILLS PUB (18+)	DECK 3, FWD	12:00 PM - 12:30 AM
PRELUDES	DECK 4, FWD	5:30 PM - 9:00 PM
PROMENADE LOUNGE	DECK 3, AFT	9:00 AM - 12:30 AM
PINOCCHIO'S PIZZERIA	DECK 9, MID	9:00 AM - 12:30 AM
SIGNALS (18+)	DECK 9, FWD	10:00 AM - 12:00 MID

Public Health Advisory: Consuming raw or undercooked meats, poultry, seafood, shellfish, or eggs may increase your risk for foodborne illness, especially if you have certain medical condition.

All Ashore: Approx. 7:15 a.m.

All Aboard: 2:45 p.m.

Ship's Agent In Mykonos

Kousathanas Travel for
Inchcape Shipping Services
Agiou Dionysiou Street, 18545 Pireaus, Greece
Panagiotis Kousathanas, Mykonos Agency
Tel: +302289022242, Fax: +302289022655, Mobile: +30 69 77 41 75 71