

# PERSONAL NAVIGATOR

SATURDAY, JUNE 28, 2014

Sunrise 6:16 a.m. Sunset: 9:00 p.m.  
 Evening Attire: Semi Formal  
 All Ashore: 9:45 a.m.  
 All Aboard: 4:45 p.m.  
 Today: Partly Sunny High: 84°F/29°C  
 Tomorrow: Partly Sunny High: 88°F/31°C

KATAKOLON, GREECE

## *The Magic & Illusion of* **Kyle Knight & Mistie**

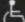
WALT DISNEY THEATRE

Deck 4, Forward,

6:30 p.m. & 8:45 p.m.

As a courtesy to all Guests, we kindly advise that the saving of seats is **not** permitted in the Walt Disney Theatre.



 Assistance available at the entrance to the Walt Disney Theatre 30 minutes prior to show time.

## *Welcome To Katakolon*

Katakolon is at the western edge of the Peloponnese peninsula on the west coast of mainland Greece. It is the closest cruise port to the original site of the ancient Olympic Games in Olympia. Due to the deep waters surrounding the port, it makes it an ideal location for large cruise ships.

The quaint little town of Katakolon is the home to almost 600 residents. Greece is a country on the southern end of the Balkan Peninsula, located in Southern Europe. Greece is surrounded on the north by Bulgaria, the Republic of Macedonia and Albania; to the west by the Ionian Sea; to the south by the Mediterranean Sea and to the east by the Aegean Sea and Turkey.

Home to the Olympic games from the 8th century BC to the 4th century AD. Olympia was once a bustling center of activity. In the 1800s and early 1900s, great efforts were made to excavate and preserve the area's ruins.



## Disney Cruise Line PORT ADVENTURES

Check your port adventures tickets for your tour meeting time and location or availability and tour information. Stop by the Port Adventures Desk located on Deck 3 Midship where our team will be delighted to help you plan your vacation.

## DINNER MENU

Animator's Palate : Show Dinner  
 Carioca's : South American Cuisine  
 Lumiere's : French Cuisine

## DRINK OF THE DAY

Blue Margarita (Alcoholic)  
 Mint Tea Punch (Non-Alcoholic)

## IMPORTANT NUMBERS

Fire/Security: 7-3001  
 Medical Emergency: 7-3000  
 Health Center: 7-1923



## ADULT ACTIVITY HIGHLIGHTS



### SENSES SPA FITNESS CLASSES & SEMINARS

*Body Sculpt Boot Camp* - Senses Spa Fitness Center - 8:00 a.m.  
*Group Cycling* - Senses Spa Fitness Center - 10:00 a.m.  
*Burn Fat Faster* - Senses Spa Fitness Center - 11:00 a.m.  
*Acupuncture Seminar: Arthritis and Back Pain Solutions* -  
 Senses Spa Fitness Center - 3:00 p.m.  
*Seminar: Walking In Comfort* - Senses Spa Fitness Center - 4:00 p.m.

### TASTING CLASSES

*Italian Liquor Tasting* (21+) - Cove Cafe - 10:30 p.m.  
 Please make reservations for tastings at Guest Services for a nominal fee.  
 Tasting Seminars are only for Guests 21 and Older.

CLUB  
18\*21

### CLUB 18\*21 - SOCIAL

*Cove Cafe, Deck 9, Midship - 5:15 p.m.*  
 Come and socialize with your fellow cruisers

### CLUB 18\*21 - MIXER

*O'Gills Pub, Deck 3, Forward - 10:15 p.m.*  
 Come to join fellow cruisers your own age at our  
 exclusive Club 18\*21 event.

### VARIETY SHOW: DONOVAN AND REBECCA

*Walt Disney Theatre, Deck 4, Forward - 10:45 p.m.*  
 Featuring the Acrobatics and Music of Donovan and Rebecca, in this  
 Adult exclusive cabaret style show.

## FUN FOR ALL AGES HIGHLIGHTS

### PICTIONARY CHALLENGE

*Promenade Lounge, Deck 3, Aft - 1:45 p.m.*  
 Come have some fun with this classic game

### DISNEY TRIVIA

*Promenade Lounge, Deck 3, Aft - 3:30 p.m.*  
 Navigate your way through another round of questions to test how  
 much you really know about Disney.

### TRIO GRECO

*Deck Stage, Deck 9, Midship - 4:30 p.m. & 5:30 p.m.*  
 Join "Trio Greco" for a taste of traditional Greek music! Featuring  
 well known Greek Artist Konstantinos Venetsanos accompanied  
 by authentic Greek musicians and instruments guaranteed to create a  
 festive atmosphere and get the whole family dancing and singing the  
 traditional Greek Syrtak! Opa!

### WORLD CUP SOCCER: BRAZIL VS. CHILE

*Funnel Vision, Deck 9, Midship - 7:00 p.m.*  
 Come join us to cheer on your favorite team!

### EPHESUS, A WONDER OF THE WORLD - FEATURING WARREN WILTSIE

*Buena Vista Theatre, Deck 5, Aft - 7:45 p.m.*  
 One of the most beautiful, surviving facades from all of Greek and  
 Roman history is made of honey-color stone, two-stories tall with  
 ornately carved marble. Columns carry out pediments from the main  
 wall of the façade while niches hold the statues of four beautiful women.  
 We are not in Athens nor are we in Rome. We are in Ephesus, gazing  
 at a library built by a son in memory of his father.

### SENSES SPA BINGO

*Fathoms, Deck 3, Forward - 8:00 p.m.*  
 Four CASH prizes to be won! Plus great spa prizes that  
 will pamper you, including a mini facial and massages all  
 courtesy of the Senses Spa and Salon. Serenity now! Pre  
 Sales start 15 minutes prior to game.

BINGO

### FAMILY SUPERSTAR KARAOKE

*D Lounge, Deck 4, Midship - 10:45 p.m.*  
 Join your Cruise Staff in D Lounge tonight and sing along to your  
 favorite song - fun for everyone.





# YOUTH ACTIVITIES HIGHLIGHTS

## DINE & PLAY

As a convenience for families dining at 8:45 p.m., our Youth Activities Counselors will be available at 9:45 p.m. at the entrance of Lumiere's, Carioca's and Animator's Palate to bring registered children to join the fun in Disney's Oceaneer Club and Disney's Oceaneer Lab.



**Deck 5, Aft (7-5864) 9:00 a.m. - 11:30 p.m.**

Infants and Toddlers can enjoy toys and activities at It's a Small World Nursery. Reservations are first come, first served so please stop by!



**Deck 5, Midship (7-1440) 11:00 a.m. - 12:00 mid**  
(3-12 years old)

## LITTLE EINSTEIN'S ADVENTURE

1:30 p.m.

Your junior cruisers will have the time of their lives with this program inspired by their favorite show with fun activities guaranteed to make them feel like a little genius!

## THE ROYAL BALL

4:15 p.m.

Attend your own Royal Ball and learn to be a prince or a princess.



**Deck 5, Midship (7-1445) 9:00 a.m. - 11:00 p.m.**  
(3-12 years old)

## CLARABELLE'S MOO JUICE

1:30 p.m.

Its time to shake the butter and make your very own Clarabelles Moo Juice.

## SUPER SLOPPY SCIENCE

5:00 p.m.

Join Professor Make-O-Mess in some of the most extreme experiments you will ever see in the world of Super Sloppy Science!



**Deck 2, Midship (7-5816) 10:30 a.m. - 12:00 a.m.**  
(11-14 years old)

## CRAFT CORNER

2:00 p.m.

Imagination is the key. It's time to get creative and put your crafty skills to use!

## ANIMATION ANTICS

4:15 p.m.

Learn simple animation techniques and then put your new skills to use by drawing some of your favorite Disney Characters.



**Deck 10, Midship (7-18517) 12:00 p.m. - 2:00 a.m.**  
(14-17 years old)

## GUITAR HERO CHALLENGE

1:30 p.m.

Test your gaming skills and compete to be the ultimate guitar hero.

## ANIMATION CELLS

4:00 p.m.

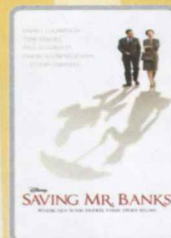
Learn what it takes to be a Disney Animator, then put your new skills to the test as you create your very own animation cell.

# BUENA VISTA THEATRE

Deck 5, Aft  
Today's Movies



8:30 a.m.  
Duration:  
1 hr 35 mins  
Rating: G

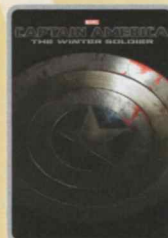


11:00 a.m.  
Duration:  
2 hrs 5 mins  
Rating: PG-13



1:45 p.m.  
Duration:  
1 hr 48 mins  
Rating: PG

**DOLBY 3D**



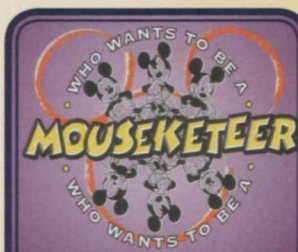
4:00 p.m.  
Duration:  
2 hrs 16 mins  
Rating: PG-13



9:00 p.m.  
Duration:  
1 hr 32 mins  
Rating: G



11:00 p.m.  
Duration:  
2 hrs 16 mins  
Rating: PG-13



## FAMILY

Your chance to get in to the "hot seat" and win limited edition prizes. Or, play along as part of our live studio audience.

**D Lounge,  
Deck 4, Midship,  
7:45 p.m. & 9:45 p.m.**



## ADULT VARIETY

Featuring the Acrobatics and Music of Donovan & Rebecca, as they entertain you in this adult cabaret style show.

**Walt Disney Theatre (18+)  
Deck 4, Forward,  
10:45 p.m.**

## YOUTH ACTIVITIES OPEN HOUSE

Open House is an opportunity for all to come and participate in a variety of exciting activities and free time in Disney's Oceaneer Club, Disney's Oceaneer Lab, Edge, Vibe, and It's a Small World Nursery throughout the cruise. During these times secured programming will still be offered in the other venues for those looking to check their children into care.

Vibe: 12:00 p.m. - 1:30 p.m.  
Edge: 10:30 a.m. - 11:30 a.m.

Disney's Oceaneer Lab: 3:30 p.m. - 6:00 p.m.  
Disney's Oceaneer Club: 11:00 a.m. - 3:00 p.m.



# MORE TO ENJOY WHILE ONBOARD



## NEW IN 2015!

Chart a magical new course for northern Europe - explore Norwegian fjords - steeped in Viking History from steaming geysers to scenic mountain ranges. Visit the Onboard Sales Desk for more information.



## DISNEY VACATION CLUB

Visit the Disney Vacation Club information desk and ask us about show times where you will learn how to turn every vacation into the vacation of a lifetime.

## Connect@Sea

We are now offering a NEW and improved Internet service to stay connected on your cruise like no other in the industry! Internet packages range from \$0.25 per MB - \$89.00 (1000 MB package). For more information contact your Connect@Sea Expert or Guest Services onboard.



## PAMPER PACKAGE

Receive 75 minute hands on treatment including a 50 minute Full Body Massage with 25 Minute Facial, and relax. Only \$149.

Deck 9, Forward - Phone : 7-1465

## SOPHIA FIORI DIAMOND TRUNK SHOW

Dazzling Diamonds,  
Tantalizing Tanzanite and  
many other Jewels.

## WHITECAPS

Deck 4, Forward



## GET THE PICTURE

Ask a friendly photographer about Get the Picture! and the incredible value of an unlimited digital photo package, which includes all of your stateroom's photos. Visit Shutters today, as supplies are limited.

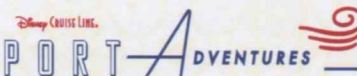
\*Terms and conditions apply. Photos captured on your vacation are only available for purchase during this cruise.

## CURRENCY EXCHANGE

Euros will be available for exchange at Guests Services, Deck 3, Midship, 24 hrs a day. Not all currencies will be exchanged onboard, so please check with Guests Services for further information. Turkish Lire will be available for purchase starting on June 29, 2014 at Guest Services on Deck 3, Midship. Please be advised that Lire are not required in Kusadasi, as Euros are readily acceptable in port.

## QUARTER MASTERS ARCADE

Where can you fly a fighter jet, save a Princess, race NASCAR's greatest and beat bad guys all before dinner? Quarter Masters is on Deck 9, Midship, where the champions play.



Combine a visit to the iconic Acropolis, the architectural masterpiece of the Golden Age and now protected by UNESCO as a World Heritage site, with New Acropolis Museum plus, enjoy lunch and free time at one of the oldest and most popular areas of the city, Plaka.

This and much more available at Port Adventures Desk, located in Deck 3 Midship. Many memories away... what's your adventure?

## SHOPPING

### HIDDEN CHARACTERS IN THOMAS KINKADE ART!

Known as the "Painter of Light," Thomas Kinkade is one Disney's most celebrated artists having created an array of enchanting artwork. Stop by the Vista Gallery today to view his unique collection of paintings featuring some of your favorite Disney characters! Also, take the time to try and find all of the hidden Disney characters scattered throughout his paintings. Are you up to the challenge? Deck 4, Midship.

### 2014 DISNEY CRUISE LINE MERCHANDISE

Step into Mickey's Mainsail today and commemorate your Disney cruise with a wide selection of 2014 Disney Cruise Line merchandise. From t-shirts to photo albums and more, you are sure to find a special souvenir for the whole family. Deck 4, Forward.

### GREEK ISLES DISNEY CRUISE LINE® MERCHANDISE

Begin your shopping experience onboard the Disney Cruise Line by visiting Mickey's Mainsail and White Caps where you'll find an array of 2014 Greek Isles Disney Cruise Line merchandise. With items such as specially designed pins and trendy styles for the whole family, discover that special souvenir with which to commemorate your trip. Deck 4, Forward.

### UNIQUE SEA BAGS MADE FROM RECYCLED SAILS

Crafted in Portland, Maine, from real sails collected from sailing communities all over the world, breathing new life into recently retired sails, our totes embody the magic of the sea and bring to every Sea Bags owner a bit of the mystery surrounding the specific sail used in the making of their tote. Visit White Caps today to view the entire collection. Deck 4, Forward.

### DISNEY CRUISE LINE® DOONEY & BOURKE HANDBAGS

Swing by White Caps and commemorate your cruise with style with the nautical themed Disney Cruise Line® Dooney & Bourke handbag collection. Deck 4, Forward.

Due to port regulations, when the ship is docked, the stores will remain closed.

## IMPORTANT INFORMATION

### Security Notice

All Guests (including Children) who wish to disembark or embark the ship are required to present their Key to the World card at the gangway. A government issued photo ID is also required for all Guests. Guests under the age of 18 are required to have a parent, guardian or other responsible adult sign an authorization form at the Guest Service Desk if they wish to go ashore unaccompanied or with any adult from another stateroom.

**Sunscreen/Insect Repellent Advisory**  
Use sunscreen first and protect against mosquito borne illnesses by applying insect repellent on top of sunscreen when going ashore.

### Cold and Flu Reminder

Please wash hands frequently and thoroughly, particularly before meals. Contact the Health Center by dialing 7-1923, should anyone in your party become ill.

### Inclement Weather

For the safety of all Guests, outdoor events may be changed due to unforeseen weather conditions.

### Corridor Quiet Hours

As a courtesy to all our Guests, please recognize quiet hallway hours from 10:00 p.m. til 8:00 a.m.

### Environmental Message

With Disney's commitment to the Environment please refrain from throwing anything over the Ship's side. Thank you.

### No Reserved Seats Policy

As a courtesy to all Guests we kindly advise that the saving of seats is not permitted in the Walt Disney Theatre, and the saving of the sun loungers is not permitted on Deck 9 and 10. Items left unattended will be returned to lost and found at Guest Services, Deck 3, Midship.

### Smoking

For the comfort of our guests, the following areas are designated as smoking areas:

- Deck 10 Forward, Starboard Side
- Deck 9, Forward, Starboard Side at Quiet Cove
- Deck 4, Starboard Side from 6:00 p.m. to 6:00 a.m. only (all of Deck 4 is non-smoking from 6:00 a.m. to 6:00 p.m.)

Smoking is prohibited inside all guest staterooms and on stateroom verandahs. Guests found smoking in their staterooms or on their verandahs will be charged a \$250 stateroom recovery fee.

### Walt Disney Theatre

Theatrical performances may use artificial fog, strobe lights, pyrotechnics and other special effects. For the safety of our performers and the comfort of those around you, the use of any photography or video recording device or any electronic equipment is prohibited.

### Verandah Safety

Please do not leave any combustible materials on your balcony when not present in your stateroom for safety reasons.



Morning	8:30	8:45	9:00	9:15	9:30	9:45	10:00	10:15	10:30	10:45	11:00	11:15	11:30	11:45	12:00	12:15	12:30	12:45	1:00	1:15	1:30					
FUNNEL VISION	Dumbo (G) Funnel Vision				Pocahontas (G) Funnel Vision				Tarzan (G) Funnel Vision																	
BUENA VISTA THEATRE	A Bug's Life (G) Duration: 1 Hour 34 Minutes						Saving Mr. Banks (PG-13) - en Espanol Duration: 2 Hours 5 Minutes																			
CHARACTERS																										
	Minnie <small>Lobby Atrium (P)</small>		Chip & Dale <small>Lobby Atrium (P)</small>		Pluto <small>Lobby Atrium (P)</small>																					
FUN FOR ALL AGES											Become Iron Man! 🦾 <small>Oceaneer Club</small>								Memory Wall 🧠 <small>Oceaneer Club</small>							
ADULTS																										
	Friends of Bill W. <small>Animator's Palette</small>						Morning Stretch <small>Senses Spa Fitness Center</small>				Group Cycling <small>Senses Spa Fitness Center</small>				Burn Fat Faster <small>Senses Spa Fitness Center</small>											
VIBE <small>14-17 YEARS OLD</small>															Youth Activities Open House 🧑🏻											
EDGE <small>11-14 YEARS OLD</small>									Youth Activities Open House 🧑🏻				Movie Time													
OCEANEER LAB <small>3-12 YEARS OLD</small>								Relay Games 🏃								Lunch										
OCEANEER CLUB <small>3-12 YEARS OLD</small>											Youth Activities Open House 🧑🏻															
											Become Iron Man! 🦾								Memory Wall 🧠							

Afternoon	1:45	2:00	2:15	2:30	2:45	3:00	3:15	3:30	3:45	4:00	4:15	4:30	4:45	5:00	5:15	5:30	5:45	6:00	6:15	6:30	6:45			
FUNNEL VISION	Wall-E (G) Funnel Vision						Live Music with Trio Greco Funnel Vision						Live Music with Trio Greco Funnel Vision											
BUENA VISTA THEATRE	Frozen: Sing-A-Long (PG) Duration: 1 Hour 48 Minutes								Captain America: The Winter Soldier (PG-13) Duration: 2 Hours 16 Minutes															
CHARACTERS																								
	Pluto <small>Lobby Atrium (P)</small> Tiana <small>Dk 4, Mid</small> Goofy <small>Lobby Atrium (P)</small> Belle <small>Dk 4, Mid</small> Mickey <small>Lobby Atrium (P)</small>																							
FUN FOR ALL AGES	Pictionary Challenge <small>Promenade Lounge</small>						Disney Trivia <small>Promenade Lounge</small>				Live Music with Trio Greco <small>Deck Stage</small>				Live Music with Trio Greco <small>Deck Stage</small>				Showtime: The Magic & Illusion of Kyle Knight & Mistie Walt Disney Theatre					
			Crafts: Buttons <small>Promenade Lounge</small>						Toddler Time <small>D Lounge</small>				Live Music with Midtown <small>O'Gills Pub</small>											
									Xbox® - The Feud <small>Promenade Lounge</small>				Live Music with Duo Azucar <small>Promenade Lounge</small>											
ADULTS	Club 18*21 - Social <small>Cove Cafe</small>																							
	Seminar: Arthritis and Back Pain <small>O'Gills Pub</small>						Walking In Comfort <small>Senses Spa Fitness Center</small>				Abs Attack <small>Senses Spa Fitness Center</small>													
VIBE <small>14-17 YEARS OLD</small>	Guitar Hero Challenge			Teen Choice			Animation Cells			Basketball Challenge			Youth Activities Open House 🧑🏻											
EDGE <small>11-14 YEARS OLD</small>	Movie Time		Craft Corner			Tween Choice					Animation Antics		Scavenger Hunt			Youth Activities Open House 🧑🏻								
OCEANEER LAB <small>3-12 YEARS OLD</small>	Clarabelle's Moo Juice 🐮						Youth Activities Open House 🧑🏻									Dinner								
							Animation Cells 🧑🏻						Super Sloppy Science 🧪											
OCEANEER CLUB <small>3-12 YEARS OLD</small>	Youth Activities Open House 🧑🏻						Become Iron Man! 🦾					The Royal Ball 🐉		Heffalump Hunting										
	Little Einstein's Adventure 🧒																							

Evening	7:00	7:15	7:30	7:45	8:00	8:15	8:30	8:45	9:00	9:15	9:30	9:45	10:00	10:15	10:30	10:45	11:00	11:15	11:30	11:45	12:00	
FUNNEL VISION	World Cup Soccer: Brazil vs. Chile Funnel Vision (Subject to satellite availability)								Pixar Shorts (G) Funnel Vision				Enchanted (PG) Funnel Vision									
BUENA VISTA THEATRE					Ephesus, A Wonder of the World - Warren Wiltsie Buena Vista Theatre				Toy Story 2 (G) Duration: 1 Hour 32 Minutes								Captain America: The Winter Soldier (PG-13) Duration: 2 Hours 16 Minutes				DOLBY 3D	
CHARACTERS		Minnie Preludes		Mickey Preludes		Donald Preludes				Minnie Preludes		Donald Preludes		Mickey Preludes								
		Cinderella Lobby Atrium (P)	Tiana Dk 4, Mid		Belle Dk 4, Mid					Cinderella Lobby Atrium (P)		Belle Lobby Atrium (P)		Daisy Preludes								
FUN FOR ALL AGES		Bingo Pre-Sales Fathoms		Senses Spa Fathoms		BINGO		Showtime: The Magic & Illusion of Kyle Knight & Mistie Walt Disney Theatre		MOUSEKETEER D Lounge		Family Superstar Karaoke D Lounge										
		Who Wants to be a Mouseketeer D Lounge																				
	World Cup Soccer: Brazil vs. Chile Funnel Vision (Subject to satellite availability)				Family Dance Party Promenade Lounge				World Cup Soccer: Colombia vs. Uruguay O'Gills Pub (Subject to satellite availability)													
ADULTS	World Cup Soccer: Brazil vs. Chile O'Gills (Subject to satellite availability)								Live Piano with Tim Moss Keys				Variety: Donovan and Rebecca Walt Disney Theatre				DJ Matt Fathoms					
		Live Piano with Tim Moss Keys				Live Music with Duo Azucar Promenade Lounge				DJ Matt Fathoms				World Cup Soccer: Colombia vs. Uruguay O'Gills Pub (Subject to satellite availability)								
VIBE 14-17 YEARS OLD	Open House 🍷		Animation Antics		AquaDunk Fun		Pump It Up		Gender Wars						Piston Cup Challenge							
EDGE 11-14 YEARS OLD	Open House 🍷	Basketball Challenge			AquaDunk Fun			Gaga Ball					Disney Infinity		Piston Cup Challenge							
OCEANEER LAB 3-12 YEARS OLD		Anyone Can Cook 🍳						Who Wants To Be A Mouseketeer				Magic Show 🎩										
OCEANEER CLUB 3-12 YEARS OLD		Pluto's Pajama Party 🐶						Dance Party 🕺														

Symbol for activities that will be repeated during the cruise



FOLD

Fold along the dotted lines and take me with you so you don't miss any of the fun!

FOLD

IN THE SPOTLIGHT SERIES  
SOLVE IT! SERIES

JUMP UP! SERIES  
CREATE & INVENT SERIES  
OPEN HOUSE

CLUBHOUSE SERIES  
STORYBOOK SERIES



SATURDAY, JUNE 28, 2014 - KATAKOLON, GREECE

# BUENA VISTA THEATRE

Deck 5, Aft

DOLBY 3D



8:30 a.m. Duration: 1 hr 35 mins Rating: G	11:00 a.m. Duration: 2 hrs 5 mins Rating: PG-13	1:45 p.m. Duration: 1 hr 48 mins Rating: PG	4:00 p.m. Duration: 2 hrs 16 mins Rating: PG-13	9:00 p.m. Duration: 1 hr 32 Rating: G	11:00 p.m. Duration: 2 hrs 16 mins Rating: PG-13
--	---	---	---	---	--

## Character Appearances

**MICKY MOUSE**  
Lobby Atrium (P)  
6:15 p.m. & 10:45 p.m.  
Preludes - 8:00 p.m.

**MINNIE MOUSE**  
Lobby Atrium (P)  
8:30 a.m.  
Preludes  
7:30 p.m. & 9:45 p.m.

**CHIP & DALE**  
Lobby Atrium (P)  
9:00 a.m.

**PLUTO**  
Lobby Atrium (P)  
9:30 a.m. & 5:15 p.m.

**PRINCESS TIANA**  
Deck 4, Midship  
5:30 p.m. & 7:45 p.m.

**GOOFY**  
Lobby Atrium (P)  
5:45 p.m.

**BELLE**  
Deck 4, Midship  
6:00 p.m. & 8:15 p.m.  
Lobby Atrium (P)  
10:15 p.m.

**CINDERELLA**  
Lobby Atrium (P)  
7:30 p.m. & 9:45 p.m.

**DONALD DUCK**  
Preludes  
8:30 p.m. & 10:15 p.m.

**DAISY DUCK**  
Preludes - 10:45 p.m.

(P) - Port Side, (S) - Starboard Side

Don't forget your Camera to capture those Magical Moments!  
Check here each day for Character appearances.  
For detailed Character appearance information, please see the Character Information Board in the Lobby Atrium.  
Meet-and-Greets will be advertised for the length of time the line will be open. To avoid disappointment, please meet at start time of appearances.

## YOUTH ACTIVITIES THEMED EXPERIENCES

**CLUBHOUSE SERIES**  
focuses on movement and features content which appeals to younger children.

**STORYBOOK SERIES**  
is designed with a strong connection to the Disney classic stories.

**JUMP UP! SERIES**  
includes large group games & movement-oriented activities.

**CREATE & INVENT SERIES**  
will have a tactile focus allowing children to create and admire their work.

**IN THE SPOTLIGHT SERIES**  
focuses on children's stage presence with lots of activities and enthusiasm.

**SOLVE IT! SERIES**  
are less active, but will challenge children with problem/solutions-based activities.

### YOUTH ACTIVITIES OPEN HOUSE

Activities for families, adults and children of all ages to enjoy together.

## SHIP DIRECTORY

### YOUTH ACTIVITIES

DISNEY'S OCEANEER CLUB	DECK 5, MID	11:00 AM - 12:00 MID
DISNEY'S OCEANEER LAB	DECK 5, MID	9:00 AM - 11:00 PM
EDGE	DECK 2, MID	10:30 AM - 12:00 AM
IT'S A SMALL WORLD NURSERY	DECK 5, AFT	9:00 AM - 11:30 PM
VIBE	DECK 10, MID	12:00 PM - 2:00 AM

### POOLS

\*Children under 12 years of age must have adult supervision in all pools.

AQUADUNK	DECK 10, MID	1:00 PM - 8:30 PM
AQUALAB	DECK 9, AFT	9:00 AM - 9:00 PM
GOOFY'S POOL	DECK 9, MID	10:00 AM - 6:00 PM 8:00 PM - 10:00 PM
NEPHEW'S SPLASH ZONE	DECK 9, AFT	9:00 AM - 6:00 PM
QUIET COVE POOL (18+)	DECK 9, FWD	6:00 AM - 12:00 MID
TWIST 'N' SPOUT	DECK 9, AFT	12:00 PM - 9:00 PM

### RECREATION

PORT ADVENTURES DESK	DECK 3, MID	8:30 AM - 10:30 AM 7:00 PM - 9:30 PM
SENSES FITNESS CENTER (18+)	DECK 9, FWD	5:00 AM - 10:00 PM
WIDE WORLD OF SPORTS DECK	DECK 10, FWD	24 HOURS

### GENERAL INFORMATION

BUENA VISTA THEATRE	DECK 5, AFT	SHOWTIMES
DISNEY VACATION CLUB DESK	DECK 4, MID	5:00 PM - 10:00 PM
ONBOARD SALES DESK	DECK 4, MID	7:30 AM - 8:30 AM 5:00 PM - 7:00 PM 8:00 PM - 10:00 PM

FUNNEL VISION	DECK 9, MID	SHOWTIMES
GUEST SERVICES	DECK 3, MID	24 HOURS
HAIR BRAIDING	DECK 9, MID	4:00 PM - 6:00 PM 7:00 PM - 10:00 PM

MEDICAL HEALTH CENTER	DECK 1, FWD	9:30 AM - 11:00 AM 4:30 PM - 7:00 PM
-----------------------	-------------	---

PORT & SHOPPING DESK	DECK 3, MID	8:30 PM - 9:30 PM
PRELUDES	DECK 4, FWD	5:30 PM - 9:00 PM

QUARTER MASTERS (ARCADE)	DECK 9, MID	24 HOURS
SENSES SPA AND SALON	DECK 9, FWD	8:00 AM - 10:00 PM
SENSES RAINFOREST	DECK 9, FWD	8:00 AM - 10:00 PM
SHUTTERS PHOTO GALLERY	DECK 4, AFT	5:00 PM - 11:00 PM
WALT DISNEY THEATRE	DECK 4, FWD	SHOWTIMES

### SHOPPING

MICKY'S MAINSAIL	DECK 4, FWD	5:30 PM - 11:30 PM
SEA TREASURES	DECK 3, FWD	5:30 PM - 11:30 PM
VISTA GALLERY	DECK 4, MID	5:30 PM - 11:30 PM
WHITE CAPS	DECK 4, FWD	5:30 PM - 11:30 PM

## IMPORTANT NUMBERS

Fire/Security: 7-3001  
Medical EMERGENCY: 7-3000  
Health Center: 7-1923

## DINNER MENU

Animator's Palate : Show Dinner  
Carioca's : South American Cuisine  
Lumiere's : French Cuisine

## DRINK OF THE DAY

Blue Margarita  
(Alcoholic)  
Mint Tea Punch  
(Non-Alcoholic)

## WEATHER FORECAST

Today: Partly Sunny  
High: 84°F/29°C  
Tomorrow:  
Partly Sunny  
High: 88°F/31°C

Evening Attire: Semi Formal

## DINING & LOUNGES

### BREAKFAST

CABANAS	DECK 9, AFT	7:30 AM - 11:30 AM
DAISY'S DE LITES	DECK 9, AFT	7:00 AM - 9:00 AM
LUMIERE'S (À-LA CARTE)	DECK 3, MID	8:00 AM - 10:00 AM

### LUNCH

CABANAS	DECK 9, AFT	11:30 AM - 3:00 PM
DAISY'S DE LITES	DECK 9, AFT	11:30 AM - 6:30 PM
LUMIERE'S	DECK 3, MID	12:00 PM - 1:30 PM
PETE'S BOILER BITES	DECK 9, AFT	11:30 AM - 6:30 PM
PINOCCHIO'S PIZZERIA	DECK 9, MID	11:30 AM - 6:30 PM

### DINNER

ANIMATOR'S PALATE	DECK 4, AFT	6:15 PM & 8:45 PM
CABANAS TABLE SERVICE	DECK 9, AFT	6:30 PM - 8:30 PM
CARIOCA'S	DECK 3, AFT	6:15 PM & 8:45 PM
LUMIERE'S	DECK 3, MID	6:15 PM & 8:45 PM
PALO (FOR RESERVATIONS CALL 7-6843)	DECK 10, AFT	6:00 PM - 8:30 PM
PETE'S BOILER BITES	DECK 9, AFT	6:30 PM - 10:30 PM

### LATE NIGHT SNACKS

PINOCCHIO'S PIZZERIA	DECK 9, MID	10:00 PM - 12:30 AM
O'GILLS PUB	DECK 3, FWD	10:45 PM - 11:45 PM
PROMENADE LOUNGE	DECK 3, AFT	10:45 PM - 11:45 PM

### ADDED FEATURES

EYE SCREAM	DECK 9, AFT	11:00 AM - 11:00 PM
BEVERAGE STATION	DECK 9, AFT	24 HOURS
ROOM SERVICE	DIAL 7-4330	24 HOURS

### ENTERTAINMENT - LOUNGES - BARS

Adults must be 21 and older to consume alcoholic beverages.

AFTER HOURS	DECK 3, FWD	(AFTER 9:00 PM. ADULTS ONLY)
COVE CAFE (18+)	DECK 9, MID	7:00 AM - 12:30 AM
D LOUNGE	DECK 4, MID	SHOWTIMES
FATHOMS (18+)	DECK 3, FWD	7:00 PM - 2:00 AM
FROZONE TREATS	DECK 9, AFT	10:00 AM - 6:00 PM
INTERNET CAFE	DECK 3, AFT	24 HOURS
KEYS (18+)	DECK 3, FWD	5:30 PM - 12:30 AM
O'GILLS PUB (18+)	DECK 3, FWD	12:00 PM - 12:30 AM
PRELUDES	DECK 4, FWD	5:30 PM - 9:00 PM
PROMENADE LOUNGE	DECK 3, AFT	9:00 AM - 12:30 AM
SIGNALS (18+)	DECK 9, FWD	9:30 AM - 12:00 MID

Public Health Advisory: Consuming raw or undercooked meats, poultry, seafood, shellfish, or eggs may increase your risk for foodborne illness, especially if you have certain medical condition.

All Ashore: Approx. 9:45 a.m.  
All Aboard: 4:45 p.m.

Ship's Agent In Katakolon  
INCHCAPE SHIPPING SERVICES  
c/o Albatros Shipping & Tourism Agency  
27067, Katakolon Port  
Tel: +30 26210 42184, 42185, Mob: +30 6937278717