

# PERSONAL NAVIGATOR

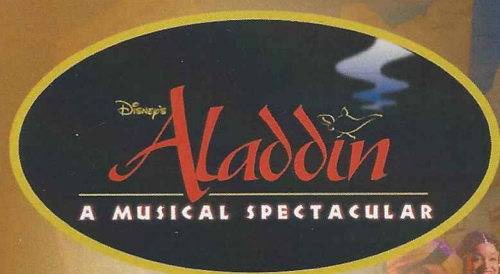


Sunrise: 6:33 a.m. Sunset: 8:25 p.m.  
Evening Attire: Formal

Today: Partly Cloudy High: 82°F/28°C  
Tomorrow: Chance of Showers High: 84°F/29°C

SUNDAY, JUNE 22, 2014

DAY AT SEA



New to Disney Cruise Line.  
"Disney's Aladdin – A Musical Spectacular"

A fast-paced, musical comedy based on the beloved animated film.

Aladdin, the "street rat" of Agrabah, meets a wise-cracking Genie, battles the evil Jafar, and falls in love with the beautiful and spirited Princess Jasmine. Disney storytelling at its best.

WALT DISNEY THEATRE

Deck 3 & 4 Forward

3:00 p.m., 6:15 p.m. & 8:30 p.m.



As a courtesy to all Guests, we kindly advise that the saving of seats is **not** permitted in the Walt Disney Theatre.



Assistance available at the entrance to the Walt Disney Theatre 30 minutes prior to show time.

## Disney FANTASY Fun Facts

Tonnage: 130,000 Gross Tons  
Height: 216 Feet  
Length: 1115 Feet

### Important Dates

Name Announcement: *March 10, 2009*  
Steel Cutting: *March 16, 2010*  
Keel Laying: *February 11, 2011*  
Delivery: *February 9, 2012*

Almost four football fields in length, the Disney Fantasy is longer than the height of the Eiffel Tower in Paris (1,063 feet). She is also longer than the height of New York City's famous Chrysler building (1,047 feet).

### Disney Fantasy's Whistle

*Will be played after today's noon announcement*  
The Disney Fantasy's whistle, a prominent element of the "Sailing Away" deck party at the start of the cruise, is quite the musical talent. It's able to perform not just the first musical line of "When You Wish Upon a Star" but also the second line of the song ("makes no difference who you are") plus several measures of "Yo Ho (A Pirate's Life for Me)," "It's a Small World," "Be Our Guest," "Hi Diddle Dee Dee (An Actor's Life for Me)" and "A Dream is a Wish."



### CAPTAIN'S RECEPTION

Enjoy live music and a cocktail while meeting some of the ship's officers.

Lobby Atrium, Deck 3, Midship,  
5:00 & 7:30 p.m.

Enjoy an exclusive photo opportunity with Commodore Tom at  
5:15 & 7:30 p.m., Lobby Atrium

## Don't Miss:

### Walking Ship Tour

Preludes, Deck 3, Forward - 9:15 a.m. & 11:30 a.m.  
Enjoy the beauty of the Disney Fantasy with your Cruise Staff in this guided tour.

### Art of The Theme Show Tour (18+)

Meridian, Deck 12, Aft - 9:30 a.m.  
Join us on a guided ship tour and discover the key ingredients that make the Disney Fantasy cruise ship one-of-a-kind.

**The Comedy and Hypnosis of Ricky Kalmon**  
Walt Disney Theatre, Deck 3 & 4, Forward - 11:30 a.m.  
Star of the Disney Channel Show SNAP, Hypnotist Ricky Kalmon brings you the only family comedy show where the audience becomes the stars!

### Anyone Can Cook - Apple Strudel

D Lounge, Deck 4, Midship - 2:15 p.m.  
From our galley to yours. Join our chefs as they show you how to prepare delicious dishes.  
Today's Menu - Apple Strudel

### Diamond, Gemstone & Watch Seminar (18+)

The Tube, Deck 4, Aft - 3:30 p.m.  
Join your Port Shopping Guides to become an educated shopper. Learn essential tips on buying Diamonds & exotic gemstones in the Caribbean. Also discover where to find the hottest watches in our ports of call.



### TIME ZONE CHANGE

Remember to turn your clocks **BACK 1 HOUR** upon retiring on **SUNDAY** evening, or first thing **MONDAY** morning.

## DINNER MENU

Animator's Palate: Pacific Rim Cuisine  
Enchanted Garden: Continental Market Cuisine  
Royal Court: French Cuisine

## DRINK OF THE DAY

Bahama Mama (Alcoholic)  
Coco Bali  
(Non Alcoholic)

### IMPORTANT NUMBERS

Fire/Security: 7-3001  
Medical Emergency: 7-3000  
Health Center: 7-1923



# ADULT ACTIVITY HIGHLIGHTS



## SENSES SPA FITNESS CLASSES & SEMINARS

*Yoga* - Donald's Pool - 7:00 a.m.  
*Body Sculpt Boot Camp* (Nom. Fee) - Senses Fitness Center - 9:00 a.m.  
*Secrets to a Flatter Stomach* - Senses Spa & Salon - 11:00 a.m.  
*Introduction to Acupuncture* - Senses Fitness Center - 12:15 p.m.  
*Back Pain Solutions* - Senses Spa & Salon - 1:00 p.m.  
*Acupuncture (Tongue & Pulse Analysis)* - Senses Spa & Salon - 3:15 p.m.  
*Group Cycling* - Senses Fitness Center - 4:00 p.m.  
*Complimentary Footprint Analysis* - Senses Spa & Salon - 5:00 p.m.  
*Fitness Frenzy* (13-17, Nom. Fee) - Senses Fitness Center - 7:00 p.m.

## TASTING CLASSES

*Champagne Tasting* (21+) - Ooh La La - 12:15 p.m.  
*Stem to Stern Wine Tasting* (21+) - Ooh La La - 1:45 p.m.  
*Rum Tasting* (21+) - Meridian - 2:00 p.m.  
*Tequila & Margarita Tasting* (21+) - Ooh La La - 4:45 p.m.  
*Whiskey Tasting* (21+) - Cove Cafe - 10:00 p.m.  
*Cognac Tasting* (21+) - Meridian - 10:30 p.m.  
 Please make reservations for tastings at Guest Services for a nominal fee.  
 Tasting Seminars are only for Guests 21 and Older.

## CLUB 18\*21 - LUNCH

*Royal Court, Deck 3, Midship - 12:15 p.m.*

CLUB  
18\*21

## CLUB 18\*21 - MINI GOLF

*Goofy Golf, Deck 13, Aft - 4:00 p.m.*

## CLUB 18\*21 - MIXER

*The Tube, Deck 4, Aft - 10:00 p.m.*

## WORLD CUP TRIVIA

*O'Gills Pub, Deck 4, Aft - 11:15 a.m.*  
 Come join us and test your World Cup knowledge!

## LIVE GUITAR WITH DAVID KENNY

*O'Gills Pub, Deck 4, Aft - 10:00 p.m. & 11:00 p.m.*  
 Join David Kenny as he plays live for your listening pleasure.

## THE QUEST

*The Tube, Deck 4, Aft - 10:15 p.m.*  
 Enjoy the wildest and wackiest scavenger team event on the seven seas!



# FUN FOR ALL AGES HIGHLIGHTS

## WAKE UP WITH DISNEY JUNIOR

*D Lounge, Deck 4, Midship - 8:30 a.m.*

What happens when you experience unlimited fun with your favorite Disney Junior shows? You get an exciting dance party designed especially for preschoolers ages seven and under.



## DISNEY ANIMATION: CREATING A CHARACTER

*D Lounge, Deck 4, Midship - 9:30 a.m. & 12:45 p.m.*

Go behind the scenes at Walt Disney Animation Studios as Walt Disney himself talks about his most famous characters, then learn the basic techniques of drawing Mickey and Donald in this fun and interesting enrichment program.



## DIAMOND JACKPOT BINGO

*D Lounge, Deck 4, Midship - 10:30 a.m.*

Join us for 4 cash prize games and your chance to win a Diamond Pendant! Everyone attending will also receive a voucher to collect a free Diamonds International charm bracelet! Plus in today's session, Disney Vacation Club sponsored raffle includes a \$100 Onboard Credit and prize-packs. Pre Sales start 15 minutes prior to game.



## DISNEY VACATION CLUB GROUP PREVIEW

*The Tube, Deck 4, Aft - 12:00 p.m.*

Want to learn more about taking magical vacations year after year? Please see a Disney Vacation Club representative on Deck 4, Midship, or call 7-2805 from your stateroom phone for more information about our interactive group presentation.



## JACK-JACK'S INCREDIBLE DIAPER DASH

*Lobby Atrium, Deck 3, Midship - 12:15 p.m.*

Calling all baby Cruisers! It's time to take to the mat to see who's the fastest crawler of the seven seas! Register your baby 15 minutes prior to the big race.



## PORT & SHOPPING SHOW

*Buena Vista Theatre, Deck 4 & 5, Forward - 1:00 p.m.*

Join your Port and Shopping Guides to learn about the incredible Tax & duty free shopping ashore this cruise! Free charm bracelet for all in attendance and a raffle to win a Diamond Pendant!

## MICKEY 200

*The Tube, Deck 4, Aft - 1:45 p.m.*

Don't eat your vegetables... race them in this wild and wacky charge to the finish line. May the best veggie win! (Limited Availability)



## DISNEY CRUISE LINE GIFT PACK JACKPOT BINGO

*D Lounge, Deck 4, Midship - 4:15 p.m.*

Four cash prize games and four exclusive Disney Cruise Line Gift Packs to be won. The jackpot continues to grow and could go at any time! Pre Sales start 15 minutes prior to game.



## PLAYHOUSE D LOUNGE

*D Lounge, Deck 4, Midship - 5:15 p.m.*

Calling our youngest of cruisers! Here is a special playtime that is just for you. Come meet new friends; and join in on the fun as your Cruise Staff team takes you through interactive activities made just for you!



# YOUTH ACTIVITIES HIGHLIGHTS

## DINE & PLAY

A convenience for families dining at 8:15 p.m., our Youth Activities Counselors will be available at 9:15 p.m. at the entrance of Royal Court, Enchanted Garden and Animator's Palate dining rooms to bring registered children to join the fun in the Youth Activity areas.



Deck 5, Midship (7-5864) 9:00 a.m. - 11:30 p.m.

## OPEN HOUSE

8:00 a.m. - 9:00 a.m.

Your chance to see our toddler space, it's a small world nursery.



Deck 5, Midship (7-1440) 9:00 a.m. - 12:00 mid  
(3-12 years old)

## ALOHA LUAU

10:30 a.m.

It's party time, Hawaiian style! Come join us for a Luau experience and learn how to dance like Lilo & Stitch.

## TOY STORY BOOT CAMP

3:30 p.m.

Join Corporal Green in our own version of boot camp as we learn how to have fun - The Toy Story way!



Deck 5, Midship (7-1445) 9:00 a.m. - 12:00 mid  
(3-12 years old)

## SUPER SLOPPY SCIENCE - FLUBBER

10:30 a.m.

Join Professor Make-O-Mess in some of the most extreme experiments you will ever seen in the world of Super Sloppy Science!

## GET THE HOOK

4:15 p.m.

A villainous villain has stolen Captain Hook's prized golden hook. Become a member of the Top Deck Detective Agency and help solve the clues to retrieve Hook's hook.



Deck 13, Midship (7-9743) 9:00 a.m. - 1:00 a.m.  
(11-14 years old)

## A TO Z SCAVENGER HUNT

12:30 p.m.

Help the counselors find everything from A-Z!

## THAT'S HILARIOUS

9:45 p.m.

Ever wanted to show off your comedy skills? Then be a part of the cast for the crazy improv show "That's Hilarious" and put on a live show for your friends.



Entrance on Deck 4, Forward (7-9418) 9:00 a.m. - 2:00 a.m.  
(14-17 years old)

## SUN DECK FUN

11:00 a.m.

Play games, swim or just sun tan on this exclusive open air deck, designed just for teens.

## DIVE INTO DJ'ING

4:00 p.m.

Hop on the turn tables and learn to scratch with our Club DJ.

# BUENA VISTA THEATRE

Deck 4 & 5, Midship  
Today's Movies

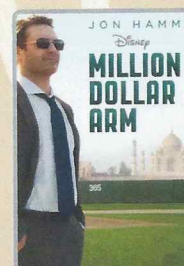


8:00 a.m. & 10:30 p.m.  
Duration: 1 hr 25 mins  
Rating: G

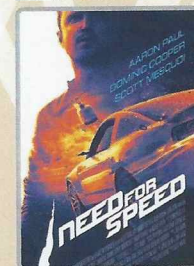


10:00 a.m.  
Duration: 1 hr 52 mins  
Rating: PG

**DOLBY 3D**



2:30 p.m.  
Duration: 2 hrs 4 mins  
Rating: PG



5:30 p.m. & 8:00 p.m.  
Duration: 2 hrs 10 mins  
Rating: PG-13

## FAMILY VARIETY ACT

Star of the Disney Channel Show SNAP, Hypnotist Ricky Kalmon brings you the only family comedy show where the audience becomes the stars!

**Walt Disney Theatre,  
Deck 3 & 4, Forward,  
11:30 a.m.  
(Doors Open At 11:00 a.m.)**

## ADULT VARIETY ACT

Featuring the Magic and Illusion of Mike Super, as he entertains you in this adult exclusive show.

**Walt Disney Theatre,  
Deck 3 & 4, Forward,  
11:00 p.m.  
(Doors Open At 10:45 p.m.)**

## YOUTH ACTIVITIES OPEN HOUSE

Open House is an opportunity for all to come and participate in a variety of exciting activities and free time in the Oceaneer Club, Oceaneer Lab, it's a small world nursery, Vibe and Edge throughout the cruise. During these times secured programming will still be offered in the other venue for those looking to check their children into care.

**Vibe:** 9:00 a.m. - 10:30 a.m. & 6:30 p.m. - 8:30 p.m.  
**Edge:** 9:00 a.m. - 10:00 a.m. & 5:00 p.m. - 6:30 p.m.  
**Disney's Oceaneer Club:** 9:00 a.m. - 10:00 a.m.



# MORE TO ENJOY WHILE ONBOARD

## FALL 2015 SPECIAL SAILINGS

For a limited time, enjoy the West Coast to Baja, as well as Galveston, Texas to The Bahamas and even an exciting return to the Hawaiian Islands. Visit the Onboard Sales Desk for more information.

## DISNEY VACATION CLUB® GROUP PREVIEW

Want to learn more about taking magical vacations year after year? Please see a Disney Vacation Club representative on Deck 4, Midship, or call 7-2805 from your stateroom phone for more information about our interactive group presentation.

## PORT AND SHOPPING INFORMATION

Love to Shop? Attend the Port Shopping Show at 1:00 p.m., Buena Vista Theatre, Deck 4 Midship to learn essential information about the best shopping in Cozumel, Grand Cayman & Falmouth. Free Charm Bracelet for attending and enter a raffle! Become an educated shopper at the Diamond, Gemstone & Watch Seminar at 3:30 p.m. in The Tube, Deck 4 Aft. At this one time only event, you will learn valuable buying tips to maximize your shopping experience in our ports of call this cruise. VIP savings cards available at the Port & Shopping Desk, 5:30 p.m. - 6:30 p.m. & 7:30 p.m. - 8:30 p.m. Deck 4 Midship.

## ONBOARD AIRLINE CHECK IN

If you would like to have your boarding passes printed for you onboard and have your luggage taken to the airport for you, register before Wednesday. If you have a Disney Cruise Line airport transfer to Orlando International Airport and fly with one of the participating airlines, stop at Guest Services, Deck 3, Midship to register.

## ARR-CADE

Where can you be a ninja, play the guitar like a rock star, race a car down the streets of Tokyo and along the way WIN some great prizes? Arr-CADE located Deck 11, Aft where the pirates play.

## runDisney®: CASTAWAY CAY 5K REGISTRATION (10+)

Sign up today for the runDisney: Castaway Cay 5K! Please visit the Port Adventures Desk or the Guest Services Desk to register at anytime prior to our arrival at Disney's Castaway Cay. Please note that runners must be 10 years of age or older to participate.

## MIDSHIP DETECTIVE AGENCY

The puppies from 101 Dalmatians have gone missing! Use your special detective "badge" to track down the puppies and catch the villain who took them. Decks 2 & 5, Midship.

## Disney Cruise Line. PORT ADVENTURES

The best way to explore our ports of call is through the eyes of a Port Adventure. Be adventurous and climb up Dunn's River Falls or explore the Green Grotto Caves in Falmouth. Why not swim with stingrays in Grand Cayman or explore the ruins in Cozumel. Stop by the Port Adventures Desk, Deck 5, Midship.

## SHOPPING

### CHANCE TO WIN ROBERTO COIN JEWELRY

Visit White Caps and discover the unique and elegant jewelry designs by Roberto Coin that are each adorned with their signature ruby which, according to Egyptian folklore, promotes health and happiness. With any Roberto Coin purchase, you are automatically entered for the chance to win a Roberto Coin 18k gold heart-shaped pendant. Winner will be announced Thursday at 7:30 p.m. Deck 3, Forward.

### BIBBIDI BOBBIDI BOUTIQUE

Young Princesses and Princes can get ready for a formal evening with a makeover at the Bibbidi Bobbidi Boutique. Make your reservations by visiting Bibbidi Bobbidi Boutique, Deck 5, Midship or dialing extension 7-9438. Limited space available.

### NEW DOONEY & BOURKE ONBOARD

Loved for their fine leather and unique designs, Dooney & Bourke creates styles that are sure to inspire. Visit White Caps and check out the new Dooney & Bourke handbags designed especially for Disney Cruise Line®. Deck 3, Forward.

### HIDDEN CHARACTERS IN THOMAS KINKADE ART!

Known as the "Painter of Light," Thomas Kinkade is one Disney's most celebrated artists having created an array of enchanting artwork. Stop by the Vista Gallery today to view his unique collection of paintings featuring some of your favorite Disney characters! Also, take the time to try and find all of the hidden Disney characters scattered throughout his paintings. Are you up to the challenge? Deck 4, Midship.

### HAIR BRAIDING ONBOARD

Add some flair to your hair when you visit a Disney Cruise Line® hair braiding station! Stop by a station today for more information and to learn all about the available braiding styles. Subject to restrictions and availability. Deck 11, Midship.

### SHINOLA WATCHES

Available onboard at White Caps, Shinola watches are created using advanced technology with meticulous hand-assembly. Deck 3, Forward.

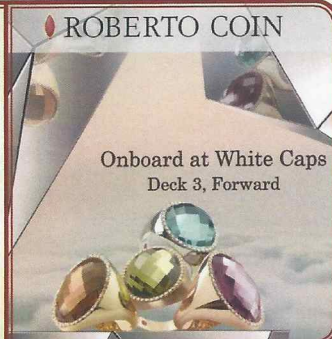


### IONITHERMY

Would you like to lose between 1 - 8 inches?  
Speed up your metabolism?  
Firm your muscle tone?  
Improve appearance of cellulite?  
If so, then Ionithermy is the best treatment for you!  
50 min. \$155

## ROBERTO COIN

Stop by White Caps and discover the unique and elegant jewelry designs by Roberto Coin. Roberto Coin prides itself in using only "conflict free" gems such as the signature ruby placed in every piece which, according to Egyptian folklore, promotes health and happiness. Deck 3, Forward.



## FORMAL PORTRAITS TONIGHT!

Now that the family is dressed up and ready to enjoy the evening, capture the memories in your formal attire by visiting our professional portrait studios located in the Lobby Atrium, Deck 3, Midship.

5:00 p.m. - 6:00 p.m.  
7:15 p.m. - 8:30 p.m.  
9:30 p.m. - 10:30 p.m.

*\*Please note that photos are available for viewing on our interactive photo kiosks approximately five hours after being taken and are only available for purchase during this cruise.*

DPO118 06-22-2014 ©DISNEY

## IMPORTANT INFORMATION

### Security Notice

All Guests (including children) who wish to disembark the ship are required to present their Key to the World card at the gangway. A photo ID is also required for those Guests who are 18 years of age or older. Guests under the age of 18 are required to have a parent, guardian or other responsible adult sign an authorization form at the Guest Service Desk if they wish to go ashore unaccompanied or with any adult from another stateroom.

**Sunscreen/Insect Repellent Advisory**  
Use sunscreen first and protect against mosquito borne illnesses by applying insect repellent on top of sunscreen when going ashore.

### Cold and Flu Reminder

Please wash hands frequently and thoroughly, particularly before meals. Contact the Health Center by dialing 7-1923, should anyone in your party become ill.

### Corridor Quiet Hours

As a courtesy to all our Guests, please recognize quiet hallway hours from 10:00 p.m. til 8:00 a.m.

### Inclement Weather

For the safety of all Guests, outdoor events may be changed due to unforeseen weather conditions.

### Environmental Message

With Disney's commitment to the Environment, please refrain from throwing anything over the Ship's side. Thank you!

### No Reserved Seats Policy

As a courtesy to all our Guests, we kindly advise that the saving of seats is not permitted in the Walt Disney Theatre, and the saving of the sun loungers is not permitted on Deck 11, 12, and 13. Items left unattended will be returned to lost and found at Guest Services, Deck 3 Midship.

### Smoking

For the comfort of our guests, the following areas are designated as smoking areas:

- Deck 13, forward, port side by Currents
- Deck 12, aft, port side outdoor area that is accessible through the Meridian Lounge
- Deck 4, aft, port side from 6:00 p.m. to 6:00 a.m. only (all of Deck 4 is non-smoking from 6:00 a.m. to 6:00 p.m.) Smoking is prohibited inside all guest staterooms and on stateroom verandahs. Guest found smoking in their staterooms or on their verandahs will be charged a \$250 stateroom recovery fee.


### Walt Disney Theatre




Theatrical performances may use artificial fog, strobe lights, pyrotechnics and other special effects. For the safety of our performers and the comfort of those around you, the use of any photography, video recording device or any electronic equipment is prohibited.


### Verandah Safety

Please do not leave any combustible materials on your balcony when not present in your stateroom for safety reasons.



Morning	8:30	8:45	9:00	9:15	9:30	9:45	10:00	10:15	10:30	10:45	11:00	11:15	11:30	11:45	12:00	12:15	12:30	12:45	1:00	1:15	1:30																			
FUNNEL VISION	A Goofy Movie (G) Funnel Vision					Aladdin (G) Funnel Vision					Disney Movie Challenge Poolside Funnel Vision																													
BUENA VISTA THEATRE	DisneyNature: Bears (G) Duration: 1 Hour 25 Minutes < Starts at 8:00 a.m.					Muppets Most Wanted (PG) Duration: 1 Hour 52 Minutes					Port & Shopping Show (18+)																													
CHARACTERS	Daisy Dk 4, Balcony					Princess Gathering Lobby Atrium					Minnie Dk 4, Balcony					Tinker Bell Lobby Atrium (V)					Stitch Dk 4, Balcony					Chip & Dale Dk 4, Balcony														
											Sofia Dk 4, Balcony										Buzz Lobby Atrium (V)					Woody Lobby Atrium (V)														
FUN FOR ALL AGES	Open House Toddler Time it's a small world nursery < Starts at 8:00 a.m.					Crafts: 3D Crafts La Piazza					Disney Animation: Creating a Character D Lounge					Bingo Pre Sales					Diamond Jackpot D Lounge					The Comedy and Hypnosis of RICKY KALMON Walt Disney Theatre					Jack-Jack's Diaper Dash Lobby Atrium					Disney ANIMATION Creating a Character D Lounge				
						Interdenominational Service Outlook					Disney Trivia La Piazza										Walking Ship Tour Preludes					Disney Vacation Club Group Preview The Tube					Disney Trivia La Piazza									
ADULTS	Friends of Bill W. Outlook					Xbox® Kinect™ - Wipeout Challenge O'Gills Pub					Creative Crafts O'Gills Pub					World Cup Trivia O'Gills Pub					World Cup Soccer - Belgium vs. Russia O'Gills Pub (Subject to Satellite Availability)																			
						Boot Camp (Nom. Fee) Senses Fitness Center					Art of The Theme Show Tour Meridian										Secrets to a Flatter Stomach Senses Spa & Salon					Singles Lunch Royal Court					Port & Shopping Show Buena Vista Theatre									
VIBE 14-17 YEARS OLD	Youth Activities Open House 🎮															Sun Deck Fun															Zombified									
EDGE 11-14 YEARS OLD	Youth Activities Open House 🎮					Game Challenge					Animation Cells					Magic Show					A to Z Scavenger Hunt																			
OCEANEER LAB 3-12 YEARS OLD						World Cup Crafts					Human Bingo					GAGA Ball					Lunch					Bingo 🍷														
						Stitch's Adventure Squad										Super Sloppy Science - Flubber										Wii Challenge														
OCEANEER CLUB 3-12 YEARS OLD	Youth Activities Open House 🎮										Aloha Luau 🌴										Craft Corner																			
	Mickey's Puzzle Playtime 🧩					Memory Wall										Magic PlayFloor										Tinker Bell's Talent Show														

Afternoon	1:45	2:00	2:15	2:30	2:45	3:00	3:15	3:30	3:45	4:00	4:15	4:30	4:45	5:00	5:15	5:30	5:45	6:00	6:15	6:30	6:45			
FUNNEL VISION								The Hunchback of Notre Dame (G) Funnel Vision							World Cup Soccer - USA vs. Portugal Funnel Vision (Subject to Satellite Availability)									
BUENA VISTA THEATRE								Million Dollar Arm (PG) Duration: 2 Hours 4 Minutes							Need for Speed (PG-13) 🎬 DOLBY 3D Duration: 2 Hours 10 Minutes									
CHARACTERS	Mickey Dk 4, Balcony			Pluto Dk 4, Balcony						Minnie Preludes			Daisy Preludes			Goofy Preludes			Mickey Dk 4, Balcony			Donald Dk 4, Balcony		
	Buzz Lobby Atrium (V)			Woody Lobby Atrium (V)						Chip & Dale Dk 4, Balcony			Minnie Dk 4, Balcony						Minnie Preludes					
FUN FOR ALL AGES													Bingo Pre Sales			DCL Gift Pack Jackpot D Lounge			Captain's Welcome Reception Lobby Atrium					
	Mickey 200 The Tube (Limited Availability)			D Lounge - Apple Strudel			Disney Tunes Trivia La Piazza												Playhouse D Lounge D Lounge					
ADULTS	Wine Tasting (21+) Ooh La La			70's Music Trivia O'Gills Pub			World Cup Soccer - Korea Republic vs. Algeria O'Gills Pub (Subject to Satellite Availability)			Club 18*21 - Mini Golf Goofy Golf						Footprint Analysis Senses Spa & Salon						World Cup Soccer - USA vs. Portugal O'Gills Pub & Funnel Vision (Subject to Satellite Availability)		
	Rum Tasting (21+) Meridian						David Kenny LIVE Deck 12, Forward			Diamond, Gemstone & Watch Seminar The Tube			David Kenny LIVE Deck 12, Forward			Tequila & Margarita Tasting (21+) Ooh La La								
VIBE 14-17 YEARS OLD	Zombified						Brains and Brawns			Dive into DJ'ing			Foosball Tournament									Open House 🎮		
EDGE 11-14 YEARS OLD				Super Sloppy Science - Flubber			Brains and Brawns			Sports Deck Fun			Youth Activities Open House 🎮									Wii Challenge		
OCEANEER LAB 3-12 YEARS OLD	Game Challenge						Relay Games			Get the Hook 🍷			Dinner			GAGA Ball						Craft Corner		
	Anyone Can Cook 🍷						Game Challenge									Magic PlayFloor								
OCEANEER CLUB 3-12 YEARS OLD	Parachute Games						Toy Story Boot Camp						Game Challenge			Wii Challenge						Craft Corner		
	Cruisin' with Crush						Relay Games			Picture This														

Evening	7:00	7:15	7:30	7:45	8:00	8:15	8:30	8:45	9:00	9:15	9:30	9:45	10:00	10:15	10:30	10:45	11:00	11:15	11:30	11:45	12:00				
FUNNEL VISION	World Cup Soccer - USA vs. Portugal Funnel Vision (Subject to Satellite Availability) < Starts at 6:00 p.m.					Bolt (G) Funnel Vision										The Avengers (PG-13) Funnel Vision									
BUENA VISTA THEATRE						Need for Speed (PG-13) 🎬 DOLBY 3D Duration: 2 Hours 10 Minutes										DisneyNature: Bears (G) Duration: 1 Hour 25 Minutes									
CHARACTERS	Ariel Preludes		Jasmine Preludes		Donald Dk 4, Balcony				Minnie Preludes		Mickey Dk 4, Balcony		Jasmine Preludes		Minnie Dk 4, Balcony										
	Minnie Dk 4, Balcony		Mickey Dk 4, Balcony																						
FUN FOR ALL AGES			Club D Dance Party D Lounge								Club D Dance Party D Lounge		Family Superstar Karaoke D Lounge												
			Captain's Welcome Reception Lobby Atrium				Walt Disney Theatre																		
ADULTS	Family Dance Party The Tube		The Quest The Tube				Family Superstar Karaoke D Lounge				Live Music with Fine Whines Lobby Atrium		Live Piano with Larry King Lobby Atrium												
	World Cup Soccer - USA vs. Portugal O'Gills Pub & Funnel Vision (Subject to Satellite Availability) < Starts at 6:00 p.m.								DJ Requests The Tube		Live Music with Andrea & Rafaela La Piazza		The Quest The Tube				The Magic and Illusions of MIKE SUPER Walt Disney Theatre		80's/90's Remix with Club DJ RobertMichael The Tube						
VIBE 14-17 YEARS OLD	Youth Activities Open House 🎮					Pump It Up					Gender Wars					Mirror, Mirror									
EDGE 11-14 YEARS OLD	Wii Challenge		4 Square Competition		GAGA Ball		Tween Choice				That's Hilarious		Gender Wars		Mirror, Mirror										
OCEANEER LAB 3-12 YEARS OLD	Craft Corner		Bingo 🍷		Disney Cruise Line Trivia				Detective School 🍷		Glow Jam														
			Disney Animation: Creating a Character		Pathfinders						Magic PlayFloor														
OCEANEER CLUB 3-12 YEARS OLD	Craft Corner		Scavenger Hunt		Game Challenge		Magic PlayFloor																		
			Once Upon a Time		Craft Corner 🍷				Movie Time 🍷																

Symbol for activities that will be repeated during the cruise



Youth Activities Open House



FOLD

Fold along the dotted lines and take me with you so you don't miss any of the fun!

FOLD

IN THE SPOTLIGHT SERIES  
SOLVE IT! SERIES

JUMP UP! SERIES  
CREATE & INVENT SERIES

CLUBHOUSE SERIES  
STORYBOOK SERIES

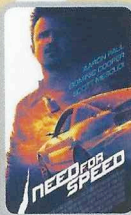


SUNDAY, JUNE 22, 2014 - DAY AT SEA

# BUENA VISTA THEATRE

Deck 4 & 5, Midship

DOLBY 3D



8:00 a.m. & 10:30 p.m.  
Duration:  
1 hr 25 mins  
Rating: G

10:00 a.m.  
Duration:  
1 hr 52 mins  
Rating: PG

2:30 p.m.  
Duration:  
2 hrs 4 mins  
Rating: PG

5:30 p.m. & 8:00 p.m.  
Duration:  
2 hrs 10 mins  
Rating: PG-13

## Character Appearances

### DAISY DUCK

Deck 4, Balcony - 9:15 a.m.  
Preludes - 4:45 p.m.

### PRINCESS GATHERING

Lobby Atrium - 10:00 a.m.

### TINKER BELL

Lobby Atrium (V)  
10:15 a.m. & 11:30 a.m.

### PRINCESS SOFIA

Deck 4, Balcony  
10:30 a.m. & 11:30 a.m.

### PRINCESS MINNIE

Deck 4, Balcony - 11:00 a.m.

### STITCH

Deck 4, Balcony - 12:45 p.m.

### BUZZ LIGHTYEAR

Lobby Atrium (V)  
12:45 p.m. & 1:45 p.m.

### WOODY

Lobby Atrium (V)  
1:15 p.m. & 2:15 p.m.

### CHIP & DALE

Deck 4, Balcony  
1:15 p.m. & 4:30 p.m.

### MICKEY MOUSE

Deck 4, Balcony  
1:45 p.m., 5:30 p.m.,  
7:45 p.m. & 9:45 p.m.

### PLUTO

Deck 4, Balcony - 2:15 p.m.

### MINNIE MOUSE

Preludes  
4:15 p.m., 5:45 p.m.  
& 9:30 p.m.  
Deck 4, Balcony  
5:00 p.m., 7:15 p.m.  
& 10:15 p.m.

### GOOFY

Preludes - 5:15 p.m.

### DONALD DUCK

Deck 4, Balcony  
6:00 p.m. & 8:15 p.m.

### ARIEL

Preludes - 7:15 p.m.

### PRINCESS JASMINE

Preludes  
7:45 p.m. & 10:00 p.m.

## YOUTH ACTIVITIES THEMED EXPERIENCES

**CLUBHOUSE SERIES**  
focuses on movement and features content which appeals to younger children.

**JUMP UP! SERIES**  
includes large group games & movement-oriented activities.

**IN THE SPOTLIGHT SERIES**  
focuses on children's stage presence with lots of activities and enthusiasm.

**STORYBOOK SERIES**  
is designed with a strong connection to the Disney classic stories.

**CREATE & INVENT SERIES**  
will have a tactile focus allowing children to create and admire their work.

**SOLVE IT! SERIES**  
are less active, but will challenge children with problem/solutions-based activities.

### YOUTH ACTIVITIES OPEN HOUSE

A non-secured program with activities for families, adults and children of all ages to enjoy together.

## SHIP DIRECTORY

### YOUTH ACTIVITIES

DISNEY'S OCEANEER CLUB	DECK 5, MID	9:00 AM - 12:00 MID
DISNEY'S OCEANEER LAB	DECK 5, MID	9:00 AM - 12:00 MID
EDGE	DECK 13, MID	9:00 AM - 1:00 AM
VIBE	DECK 4, FWD	9:00 AM - 2:00 AM
IT'S A SMALL WORLD NURSERY	DECK 5, MID	9:00 AM - 11:30 PM

### POOLS & MORE

\* Children under 12 must have adult supervision in pool areas.

AQUADUCK	DECK 12, MID	9:00 AM - 11:00 PM
AQUALAB	DECK 12, AFT	10:00 AM - 6:00 PM
DONALD'S POOL	DECK 11, MID	9:00 AM - 6:00 PM 8:00 PM - 10:00 PM
MICKEY'S POOL	DECK 11, MID	6:00 AM - 11:30 PM
MICKEY'S SLIDE	DECK 11, MID	9:00 AM - 6:00 PM
NEMO'S REEF	DECK 11, MID	9:00 AM - 6:00 PM
QUIET COVE POOL (18+)	DECK 11, FWD	6:00 AM - 12:00 MID
SATELLITE FALLS	DECK 13, FWD	6:00 AM - 8:00 PM

### RECREATION

GOLF/SPORTS SIMULATORS	DECK 13, AFT	9:00 AM - 6:00 PM
GOOFY GOLF	DECK 13, AFT	8:00 AM - 10:00 PM
GOOFY'S SPORTS DECK	DECK 13, AFT	8:00 AM - 6:00 PM
MIDSHIP DETECTIVE AGENCY	DECKS 2 & 5, MID	9:00 AM - 9:00 PM
PORT ADVENTURES DESK	DECK 5, MID	9:00 AM - 5:00 PM 7:00 PM - 8:30 PM
SENSES FITNESS CENTER (18+)	DECK 11, FWD	6:30 AM - 10:00 PM

### GENERAL INFORMATION

ARR-CADE	DECK 11, AFT	24 HOURS
DISNEY VACATION CLUB	DECK 4, MID	9:00 AM - 11:30 AM 2:30 PM - 10:00 PM
GUEST SERVICES	DECK 3, MID	24 HOURS
MEDICAL HEALTH CENTER	DECK 1, FWD	9:30 AM - 11:00 AM 4:30 PM - 7:00 PM
ONBOARD SALES DESK	DECK 4, MID	10:00 AM - 12:00 PM 2:00 PM - 6:00 PM 7:30 PM - 8:30 PM
PORT & SHOPPING DESK	DECK 4, MID	7:30 PM - 8:30 PM
PRELUDES	DECK 3, FWD	2:30 PM - 3:15 PM 5:45 PM - 6:30 PM 8:00 PM - 8:45 PM
SENSES SPA AND SALON	DECK 11, FWD	8:00 AM - 10:00 PM
SHUTTERS PHOTO GALLERY	DECK 4, MID	9:30 AM - 12:00 PM 7:00 PM - 11:00 PM
SHUTTERS DIGITAL	DECK 4, MID	24 HOURS

### SHOPPING

BIBBIDI BOBBIDI BOUTIQUE	DECK 5, MID	9:00 AM - 9:00 PM
MICKEY'S MAINSAIL	DECK 3, FWD	9:30 AM - 11:00 PM
QUACKS	DECK 11, MID	10:00 AM - 4:00 PM
SEA TREASURES	DECK 3, FWD	9:30 AM - 11:00 PM
VISTA GALLERY	DECK 4, MID	10:00 AM - 10:00 PM
WHITE CAPS	DECK 3, FWD	9:30 AM - 11:00 PM
WHIZITS & WHATZITS	DECK 11, MID	10:00 AM - 4:00 PM

## DINNER MENU

Animator's Palate: Pacific Rim Cuisine  
Enchanted Garden: Continental Market Cuisine  
Royal Court: French Cuisine  
Dining Times: 5:45 p.m. & 8:15 p.m.

## DRINK OF THE DAY

Bahama Mama (Alcoholic)  
Coco Bali (Non Alcoholic)

## WEATHER FORECAST

Today: Partly Cloudy  
High: 82°F/28°C  
Tomorrow: Chance of Showers  
High: 84°F/29°C

Evening Attire: Formal

## DINING & LOUNGES

### BREAKFAST

CABANAS CONTINENTAL	DECK 11, AFT	7:00 AM - 7:30 AM
CABANAS	DECK 11, AFT	7:30 AM - 11:30 AM
ENCHANTED GARDEN	DECK 2, MID	8:30 AM - 10:45 AM
ROYAL COURT	DECK 3, MID	8:00 AM - 9:30 AM

### LUNCH

CABANAS	DECK 11, AFT	11:30 AM - 2:00 PM
FILMORE'S FAVORITES	DECK 11, MID	11:00 AM - 6:00 PM
LUIGI'S PIZZA	DECK 11, MID	11:00 AM - 6:00 PM
ROYAL COURT	DECK 3, MID	12:00 PM - 1:30 PM
TOW MATER'S GRILL	DECK 11, MID	11:00 AM - 11:00 PM

### DINNER

ANIMATOR'S PALATE	DECK 3, AFT	5:45 PM & 8:15 PM
ENCHANTED GARDEN	DECK 2, MID	5:45 PM & 8:15 PM
ROYAL COURT	DECK 3, MID	5:45 PM & 8:15 PM
CABANAS TABLE SERVICE	DECK 11, AFT	6:30 PM - 8:30 PM
PALO (18+) (RESERVATIONS REQ. & NOM. FEE APPLIES)	DECK 12, AFT	6:00 PM - 8:30 PM
REMY (18+) (RESERVATIONS REQ. & NOM. FEE APPLIES)	DECK 12, AFT	6:00 PM - 8:30 PM

### LATE NIGHT SNACKS

LA PIAZZA (18+)	DECK 4, AFT	10:45 PM - 11:45 PM
LUIGI'S PIZZA	DECK 11, MID	9:30 PM - 12:30 AM

### ADDED FEATURES

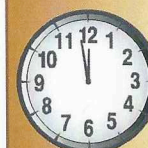
BEVERAGE STATION	DECK 11, MID	24 HOURS
EYE SCREAM	DECK 11, MID	11:00 AM - 11:00 PM
ROOM SERVICE	DIAL 0	24 HOURS

### ENTERTAINMENT - LOUNGES - BARS

Adults must be 21 and older to consume alcoholic beverages.

BON VOYAGE	DECK 3, MID	9:00 AM - 11:00 PM
COVE BAR (18+)	DECK 11, FWD	10:00 AM - 11:00 PM
COVE CAFE (18+)	DECK 11, FWD	7:00 AM - 12:00 MID
CURRENTS (18+)	DECK 13, FWD	10:00 AM - 11:00 PM
D LOUNGE	DECK 4, MID	SHOWTIMES
FROZONE TREATS	DECK 11, MID	10:00 AM - 10:00 PM
LA PIAZZA (18+ AFTER 9:00 P.M.)	DECK 4, AFT	12:00 PM - 12:00 MID
MERIDIAN (18+)	DECK 12, AFT	10:00 AM - 12:00 MID
O'GILLS PUB (18+ AFTER 9:00 PM)	DECK 4, AFT	12:00 PM - 12:00 MID
OOH LA LA (18+)	DECK 4, AFT	5:30 PM - 12:00 MID
OUTLOOK	DECK 14, MID	
SKYLINE (18+)	DECK 4, AFT	5:30 PM - 12:30 PM
THE TUBE (18+ AFTER 9:00 P.M.)	DECK 4, AFT	9:30 PM - 2:00 AM
VISTA CAFE	DECK 4, MID	7:00 AM - 11:00 PM
WAVES	DECK 12, AFT	10:00 AM - 6:00 PM

Public Health Advisory: Consuming raw or under-cooked meats, poultry, seafood, shellfish, or eggs may increase your risk for food borne illness, especially if you have certain medical condition



## TIME ZONE CHANGE

Remember to turn your clocks **BACK 1 HOUR** upon retiring on **SUNDAY** evening, or first thing **MONDAY** morning.

## IMPORTANT NUMBERS

Fire/Security: 7-3001  
Medical Emergency: 7-3000  
Health Center: 7-1923

(H) Hallway - (S) Starboard Side - (P) Port Side - (V) Vestibule

For details of daily Disney character appearances, refer to the character line on your Navigator Grid, or the digital character board in the Lobby Atrium.