

PERSONAL NAVIGATOR

SUNDAY, JUNE 1, 2014

Sunrise: 5:23 a.m. Sunset: 9:27 p.m.
Evening Attire: Cruise Casual

Today: Partly Sunny High: 62°F/17°C
Tomorrow: Partly Cloudy High: 64°F/18°C
DAY AT SEA

Disney DREAMS

AN ENCHANTED CLASSIC

*In this spectacular fantasy, a little girl discovers the power of her dreams.
Fly through the air with Peter Pan and your imagination, as many Classic Disney Characters
spring to life. With a little Faith, Trust and Pixie Dust you'll see that your dreams can come true!*

WALT DISNEY THEATRE

Deck 4, Forward

6:15 p.m. & 8:30 p.m.

As a courtesy to all Guests, we kindly advise that the saving of seats is **not** permitted in the Walt Disney Theatre.



Assistance available at the entrance to the Walt Disney Theatre 30 minutes prior to show time.

Did You Know?

- The 1,967 miles of cable on our ship would be enough to run an extension cord between Austin and Detroit.
- Our ship is 964 feet long, only 22 feet less than the height of the Eiffel Tower.
- The ship can make 500,000 gallons of fresh water from sea water everyday while cruising.

DISTANCES

Vancouver to Sitka

755 Nautical Miles

Sitka to Tracy Arm

230 Nautical Miles

Tracy Arm to Skagway

152 Nautical Miles

Skagway to Juneau

102 Nautical Miles

Juneau to Ketchikan

286 Nautical Miles

Ketchikan to Vancouver

574 Nautical Miles

Total Distance Travelled

2099 Nautical Miles

'TIL WE MEET AGAIN

FAREWELL SHOW

The world-famous
Disney Characters and some of
your new friends from
the Disney Wonder stage shows
bid you a charming farewell.

*Lobby Atrium,
Deck 3, Midship,
10:00 p.m.*

Don't Miss:

Disney's Art of Entertaining: Dazzling Dessert
Studio Sea, Deck 4, Midship - 10:15 a.m.

Learn to create mouth-watering sweets like a professional pastry chef with easy to follow decadent recipes.

Humpbacks, Gray & Killer Whales: What You Don't See
Buena Vista Theatre, Deck 5, Aft - 11:00 a.m.

Join Doug Jones for a look at the types of mammals that are native to Alaska. He will share the habits of whales, help you to understand their life in the ocean, and share a few personal stories.

Mickey Mania

Studio Sea, Deck 4, Midship - 7:30 p.m.

Join us for the ultimate test of your Disney knowledge as we play our live, interactive game show, that's "insania!"

Cruise Staff Farewell

Wavebands, Deck 3, Forward - 11:15 p.m.

Join our Club Host and the Cruise Staff team and see our version of the funniest skit on the high seas, "If I Were Not Upon The Sea."



Book your next cruise onboard and save 10% on prevailing rates as quoted on disneycruise.com. Plus, get an onboard credit and special deposit rate! Visit the Future Cruise Sales Desk for more information.

DINNER MENU

Animator's Palate: 'Til We Meet Again
Parrot Cay: 'Til We Meet Again
Triton's: 'Til We Meet Again

DRINK OF THE DAY

Blue Margarita (Alcoholic)
Mango Crush (Non Alcoholic)

IMPORTANT NUMBERS

Fire/Security: 7-3001
Medical Emergency: 7-3000
Health Center: 7-1923

ADULT ACTIVITY HIGHLIGHTS



VISTA SPA FITNESS CLASSES & SEMINARS

Sunrise Stretch - Vista Spa Fitness Center - 7:00 a.m.
Tour De Cycle - Vista Spa Fitness Center - 8:30 a.m.
Body Sculpt Boot Camp - Vista Spa Fitness Center - 9:30 a.m.
Acupuncture: Chinese Herbs - Outlook Cafe - 10:15 a.m.
Detox for Health & Weight Loss - Outlook Cafe - 11:00 a.m.
Seminar: Improving Your Posture-Walk in Comfort - Outlook Cafe - 2:00 p.m.
Pilates - Vista Spa & Salon - 4:30 p.m.
Complimentary Footprint Analysis - Vista Spa Fitness Center - 5:00 p.m.

TASTING CLASSES

Chocolate & Liquor Tasting (21+) - Cadillac Lounge - 12:00 p.m.
Mixology (21+) - Cadillac Lounge - 2:00 p.m.
Tequila & Margarita Tasting (21+) - Cadillac Lounge - 4:00 p.m.
Whiskey Tasting (21+) - Outlook Cafe - 10:30 p.m.
Please make reservations for tastings at Guest Services for a nominal fee.
Tasting Seminars are only for Guests 21 and Older.

CLUB
18*21

CLUB 18*21 - FAREWELL

Diversions, Deck 3, Forward - 10:00 p.m.

Join your Cruise Staff and your new friends in this last gathering for some fun.

90'S MUSIC TRIVIA

Diversions, Deck 3, Forward - 11:45 a.m.

"If you Wannabe" the winner, then join us as we test your 90's music knowledge.

ART OF THE THEME SHOW TOUR

Palo, Deck 10, Aft - 1:45 p.m.

Join us on a guided ship tour and discover the key ingredients that make the Disney Wonder.



FUN FOR ALL AGES HIGHLIGHTS

INTERDENOMINATIONAL SERVICE

Cadillac Lounge, Deck 3, Forward - 8:30 a.m.

A quiet space reserved for Guests who wish to come together to worship.

GLACIERS - COLD MAJESTY FEATURING RICHARD MUNROE

Wavebands, Deck 3, Forward - 9:00 a.m.

Learn about the birth, growth and melting of glaciers, and learn about the tools used to study glaciers.

WAKE UP WITH DISNEY JUNIOR

Studio Sea, Deck 4, Midship - 9:00 a.m.

What happens when you experience unlimited fun with your favorite Disney Junior shows? You get an exciting dance party designed especially for preschoolers ages seven and under.



JACK-JACK'S INCREDIBLE DIAPER DASH

Lobby Atrium, Deck 3, Midship - 9:30 a.m.

Calling all baby Cruisers! It's time to take to the mat to see who's the fastest crawler of the seven seas! Register your baby 15 minutes prior to the big race.



\$10,000 MEGA JACKPOT BINGO

Wavebands, Deck 3, Forward - 11:00 a.m.

It's Big, it's Massive, it's Supersized! It's \$10,000 MEGA Jackpot Bingo! Take home \$10,000 if you can cover your card in 46 numbers or less. If not, we carry on to play for the biggest cash prize of the session. Pre Sales start 15 minutes prior to game.



ANIMATION - PLUTO

Animator's Palate, Deck 4, Aft - 11:45 a.m.

Your Cruise Staff teach you how to draw one of your favorite Disney friends - Pluto.



MICKEY 200

Wavebands, Deck 3, Forward - 12:30 p.m.

Don't eat your vegetables... race them in this wild and wacky charge to the finish line. May the best veggie win! (Limited Availability)

TOWEL FOLDING

Studio Sea, Deck 4, Midship - 2:15 p.m.

Learn to create those amazing towel creatures you've seen in your stateroom all cruise long.

DISNEY TUNES TRIVIA

Promenade Lounge, Deck 3, Aft - 2:15 p.m.

Determine just how well you know your Disney Tunes with your Cruise Staff.

FINAL JACKPOT BINGO

Wavebands, Deck 3, Forward - 3:30 p.m.

The snowball jackpot **MUST BE WON** at this final session! Beat the line and get your cards early. Who will be the lucky winner? It could be you! Pre Sales start 30 minutes prior to game.



FRIENDSHIP ROCKS

Walt Disney Theatre, Deck 4, Forward - 5:00 p.m.

Come and celebrate with all the children from the Oceaneer Club and Oceaneer Lab in the Jammin' performance of Friendship Rocks! You won't want to miss any of the fun.



OFFICER PIN TRADING

Lobby Atrium, Deck 3, Midship - 7:15 p.m.

Come trade pins with the Officers of the Disney Wonder.

CAPTAIN'S SIGNING

Treasure Ketch, Deck 4, Forward - 7:30 p.m.

Meet the Master of the Disney Wonder and have your cruise memories signed.

FAREWELL KARAOKE

Studio Sea, Deck 4, Midship - 10:30 p.m.

Bring along the entire family for one more round of karaoke. This is your last opportunity to grab the mic and sing along to your favorite song.

YOUTH ACTIVITIES HIGHLIGHTS

DINE & PLAY

A convenience for families dining at 8:15 p.m., our Youth Activities Counselors will be available at 9:15 p.m. at the entrance of Triton's, Parrot Cay and Animator's Palate dining rooms to bring registered children to join the fun in the Oceaneer Club and Oceaneer Lab.



Deck 5, Aft (7-18500) 9:00 a.m. - 11:00 p.m.

Infants and Toddlers can enjoy toys and activities at Flounder's Reef Nursery. Reservations are first come, first served so please stop by!



Deck 5, Midship (7-1440) 9:00 a.m. - 12:00 mid
(3 - 12 years old)

ALOHA LUAU

11:00 a.m.

It's party time, Hawaiian style! Come join us for a Luau experience and learn how to dance like Lilo & Stitch.

PLUTO'S PAJAMA PARTY

7:15 p.m.

Bring the little ones in their pajamas but there will be anything but sleep when Pluto and friends host the ultimate slumber party!



Deck 5, Midship (7-1445) 9:00 a.m. - 12:00 mid
(3 - 12 years old)

GOOFY FILES

2:30 p.m.

This fascinating activity takes you into the invisible world of forensics where you will discover different ways to identify the suspect of a crime.

FRIENDSHIP ROCKS

5:00 p.m.

Come and celebrate with all the children from the Oceaneer Club and Lab in the jammin' performance of Friendship Rocks! You won't want to miss any of the fun.



Deck 2, Midship (7-5810) 9:00 a.m. - 12:00 mid
(11 - 14 years old)

PICTURE THIS

3:45 p.m.

Create your own professional picture frame and take a photo with a special guest.

MAGIC SHOW

8:00 p.m.

The Magnificent Magician will demonstrate to you some of the best known magic tricks on the sea.



Deck 11, Midship (7-1456) 11:00 a.m. - 11:30 p.m.
(14 - 17 years old)

SMOOTHIE TIME

6:00 p.m.

Join us for Smoothies.

HOMECOMING

11:30 p.m.

Come and join your fellow teens in our very own version of "Homecoming", and dance the night away.

BUENA VISTA THEATRE

Deck 5, Aft

Today's Movies

OC Open Captioning

DOLBY 3D



8:30 a.m.
Duration: 1 hr 48 mins
Rating: PG



1:00 p.m. & 10:45 p.m.
Duration: 1 hr 37 mins
Rating: PG



3:15 p.m.
Duration: 1 hr 37 mins
Rating: PG



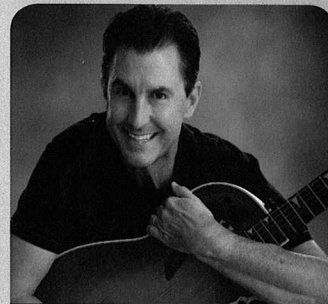
5:15 p.m. & 8:00 p.m.
Duration: 2 hrs 4 mins
Rating: PG



TALENT SHOW

Your fellow Guests have rehearsed and are ready to show off their talents. Rehearsal time for those already registered for our show will take place at 4:45 p.m. in WaveBands.

**Wavebands,
Deck 3, Forward,
7:30 p.m.**



ADULT VARIETY ACT

Featuring the Comedy & Music of John Charles, as he entertains you in this adult exclusive show.

**Wavebands (18+),
Deck 3, Forward,
10:30 p.m.**

YOUTH ACTIVITIES OPEN HOUSE

Open House is an opportunity for all to come and participate in a variety of exciting activities and free time in the Oceaneer Club, Oceaneer Lab, Flounder's Reef Nursery, Vibe and Edge throughout the cruise. During these times secured programming will still be offered in the other venue for those looking to check their children into care.

Vibe: 10:00 a.m. - 11:00 a.m. Disney's Oceaneer Club: 9:00 a.m. - 10:30 a.m.

Vibe: 4:00 p.m. - 6:00 p.m.

Edge: 9:00 a.m. - 12:00 p.m.

Edge: 6:00 p.m. - 8:00 p.m.

MORE TO ENJOY WHILE ONBOARD

PLAN YOUR NEXT GETAWAY NOW

Our 3 and 4 night Bahamian Cruises are a perfect way to get an instant tropical recharge! Departing from Miami or Port Canaveral, most Bahamian cruises include a stop at Disney's private island, Castaway Cay. Visit the Onboard Sales Desk today and ask about our special onboard booking offer.

DISNEY VACATION CLUB® GROUP PREVIEW

Want to learn more about taking magical vacations year after year? Please see a Disney Vacation Club representative on Deck 4, Midship, or call 7-2805 from your stateroom phone for more information about our interactive group presentation.

DEBARK TALK BROADCAST

Important information regarding disembarkation procedures for Vancouver and your journey home will be covered in this debarkation briefing. The broadcast will be shown continuously on channel 22-3 of your stateroom television for your convenience. Thank you in advance for completing your comment card.

QUARTER MASTERS ARCADE

Demonstrate your cutting expertise at BARBERCUT and win an Ipod Nano or an Ipod Shuffle! Only at Quarter Masters Arcade, located on Deck 9, Midship, where the winners win.

TRANSPORTATION

12:00 p.m. today is the last chance to book transportation to Vancouver International Airport. Stop by the Guest Services Desk, located Deck 3, Midship. \$25 per person.

Connect@Sea

We are now offering a NEW and improved Internet service to stay connected on your cruise like no other in the industry! Internet packages range from \$0.25 per MB - \$89.00 (1000 MB package). For more information contact your Connect@Sea Expert or Guest Services onboard.



VISTA SPA

Deck 9, Forward - Phone: 7-1465

SALON TASTER

Neck and Shoulder Massage, Hydrating Facial, Eye Collagen treatment, Frangipani Conditioning Hair treatment, Hand and Arm Massage, Foot and Ankle Massage, Scalp Massage, Sunglow Makeover

Pick 3 \$99, Pick 5 \$119, Pick all 8 \$139

2014 DISNEY CRUISE LINE MERCHANDISE

Step into Mickey's Mates today and commemorate your Disney cruise with a wide selection of 2014 Disney Cruise Line Merchandise. Mickey's Mates, Deck 4, Forward.



Remember your Disney cruise forever when you purchase all your photos on a CD. Stop by Shutters on Deck 4, Aft and ask your friendly Shutters staff on how you can Get The Picture!

**Please note that photos are available for viewing on our interactive photo kiosks approximately five hours after being taken and are only available for purchase during this cruise.*

SHOPPING

DISNEY-PIXAR ART AT THE VISTA GALLERY

Calling all Disney-Pixar fans! Swing by the Vista Gallery to check out all of the original artwork featuring some of your favorite Disney-Pixar characters! With original artwork created by various celebrated Disney artists, you're sure to discover a piece to inspire your love for Disney-Pixar stories. Deck 4, Midship.

SOPHIA FIORI LAST OPPORTUNITY

Drop in to Treasure Ketch for your last chance to get your hands on our fantastic collection of Sophia Fiori Couture diamond jewelry! Don't miss out on these exquisite diamonds. Deck 4, Forward.

GUCCI WATCHES

Gucci Timepieces has been creating watches since the early Seventies, combining Swiss precision and Italian style. Recognized for their design, quality and craftsmanship, the many styles of the maison have become classics for men and women. Collection includes G-Frame and the Twirl, Marina Chain and the G-Gucci line and Gucci Coupé. All timepieces present Gucci icons, such as G-shaped bezels, red-green-red straps, or Horsebit clasps. View the collection in Treasure Ketch.

CAPTAIN'S SIGNING

Don't miss your chance to meet the Master of the Disney Wonder! Stop by Treasure Ketch today at 7:30 p.m. where you can have your cruise mementos signed by our Captain. Deck 4, Forward.

SPECIAL OFFER ONBOARD

Stop by the onboard merchandise shops, Deck 4 Forward, and receive an Alaska Fleece Throw for \$19.95 with a purchase of \$45.00. Offer not valid on previous purchases. No other discounts apply. While supplies last. Offer subject to change without notice.

'TIL WE MEET AGAIN!

Although our time together is coming to a close, your memories will always live on! Visit Mickey's Mates for all your last minute Disney Cruise Line items.

PIN TRADING

Check out the Disney Cruise Line® pins, such as the Alaska 2014 commemorative pin, when you visit Mickey's Mates, Deck 4, Forward. Later, join the Officers of the Disney Wonder® Cruise Ship for pin trading fun at 7:15 p.m. in the Lobby Atrium, Deck 3, Midship.

IMPORTANT INFORMATION

Security Notice

All Guests (including Children) who wish to disembark or embark the ship are required to present their Key to the World card at the gangway. A photo ID is also required for those Guests who are 18 years of age or older. Guests under the age of 18 are required to have a parent, guardian or other responsible adult sign an authorization form at the Guest Service Desk if they wish to go ashore unaccompanied or with any adult from another stateroom.

Sunscreen/Insect Repellent Advisory

Use sunscreen first and protect against mosquito borne illnesses by applying insect repellent on top of sunscreen when going ashore.

Cold and Flu Reminder

Please wash hands frequently and thoroughly, particularly before meals. Contact the Health Center by dialing 7-1923, should anyone in your party become ill.

Inclement Weather

For the safety of all Guests, outdoor events may be changed due to unforeseen weather conditions.

Corridor Quiet Hours

As a courtesy to all our Guests, please recognize quiet hallway hours from 10:00 p.m. til 8:00 a.m.

Environmental Message

With Disney's commitment to the Environment please refrain from throwing anything over the Ship's side. Thank you.

No Reserved Seats Policy

As a courtesy to all Guests we kindly advise that the saving of seats is not permitted in the Walt Disney Theatre, and the saving of the sun loungers is not permitted on Deck 9 and 10. Items left unattended will be returned to lost and found at Guest Services, Deck 3, Midship.

Smoking

For the comfort of our guests, the following areas are designated as smoking areas:

- Deck 10, forward, Starboard side
- Deck 9, forward, Starboard side at Quiet Cove
- Deck 4, aft, starboard side from 6:00 p.m. to 6:00 a.m. only (all of Deck 4 is non-smoking from 6:00 a.m. to 6:00 p.m.)

Smoking is prohibited inside all guest staterooms and on stateroom verandahs. Guest found smoking in their staterooms or on their verandahs will be charged a \$250 stateroom recovery fee.

Electronic cigarettes may only be used in designated smoking areas.

Walt Disney Theatre

Theatrical performances may use artificial fog, strobe lights, pyrotechnics and other special effects. For the safety of our performers and the comfort of those around you, the use of any photography or video recording device or any electronic equipment is prohibited.

Verandah Safety

Please do not leave any combustible materials on your balcony when not present in your stateroom for safety reasons.

 Symbol for activities that will be repeated during the cruise

—  —  —
FOLD

Fold along the dotted lines and take me with you
so you don't miss any of the fun!

— FOLD —

 JUMP UP! SERIES
 CREATE & INVENT SERIES
 IN THE SPOTLIGHT SERIES
 SOLVE IT! SERIES
 OPEN HOUSE

CLUBHOUSE SERIES
STORYBOOK SERIES

SUNDAY, JUNE 1, 2014 - DAY AT SEA

BUENA VISTA THEATRE

Deck 5, Aft

Open Captioning

DOLBY 3D



8:30 a.m.
Duration:
1 hr 48 mins
Rating: PG



1:00 p.m.
& 10:45 p.m.
Duration:
1 hr 37 mins
Rating: PG



3:15 p.m.
Duration:
1 hr 37 mins
Rating: PG



5:15 p.m.
& 8:00 p.m.
Duration:
2 hrs 4 mins
Rating: PG

Character Appearances

JAKE - THE NEVERLAND PIRATE
Deck 4, Midship - 9:30 a.m.

ARIEL
Preludes - 9:30 a.m.

PRINCESS SOFIA
Deck 4, Midship - 10:00 a.m.

BELLE
Preludes - 10:00 a.m.

MICKEY MOUSE
Deck 4, Midship - 10:30 a.m.
Lobby Atrium (P) - 7:15 p.m.

CINDERELLA
Preludes - 10:30 a.m.

RAPUNZEL
Preludes - 11:00 a.m.

MINNIE MOUSE
Deck 4, Midship - 11:00 a.m.
Lobby Atrium (P) - 7:45 p.m.

PRINCESS TIANA
Preludes - 11:30 a.m.

CAPTAIN HOOK
Lobby Atrium (P) - 1:00 p.m.

CHIP & DALE
Lobby Atrium (S) - 1:00 p.m.

GOOFY
Lobby Atrium (S) - 1:30 p.m.

DAISY DUCK
Lobby Atrium (P) - 1:30 p.m.

CHARACTER DANCE PARTY
Lobby Atrium - 3:00 p.m.

DONALD DUCK
Lobby Atrium (P) - 5:15 p.m.

PLUTO
Lobby Atrium (P) - 5:45 p.m.

TIL WE MEET AGAIN
Lobby Atrium - 10:00 p.m.

(P) - Port Side (S) - Starboard Side

Don't forget your Camera to capture those Magical Moments!
Check here each day for all of today's Character Appearances or refer to the Character Board in the Lobby Atrium.

Meet-and-Greets will be advertised for the length of time the line will be open. To avoid disappointment, please meet at start time of appearances.

YOUTH ACTIVITIES THEMED EXPERIENCES

CLUBHOUSE SERIES
focuses on movement and features content which appeals to younger children.

STORYBOOK SERIES
is designed with a strong connection to the Disney classic stories.

JUMP UP! SERIES
includes large group games & movement-oriented activities.

CREATE & INVENT SERIES
will have a tactile focus allowing children to create and admire their work.

IN THE SPOTLIGHT SERIES
focuses on children's stage presence with lots of activities and enthusiasm.

SOLVE IT! SERIES
are less active, but will challenge children with problem/solutions-based activities.

YOUTH ACTIVITIES OPEN HOUSE

Activities for families, adults and children of all ages to enjoy together.

SHIP DIRECTORY

YOUTH ACTIVITIES

DISNEY'S OCEANEER CLUB	DECK 5, MID	9:00 AM - 12:00 MID
DISNEY'S OCEANEER LAB	DECK 5, MID	9:00 AM - 12:00 MID
EDGE	DECK 2, MID	9:00 AM - 12:00 MID
VIBE	DECK 11, MID	11:00 AM - 11:30 PM
FLOUNDER'S REEF NURSERY	DECK 5, AFT	9:00 AM - 11:00 PM

POOLS

Children under 12 years of age must have adult supervision in all pools.

GOOFY'S POOL	DECK 9, MID	10:00 AM - 8:00 PM
MICKEY'S POOL	DECK 9, AFT	10:00 AM - 8:00 PM
MICKEY'S SLIDE	DECK 9, AFT	10:00 AM - 5:00 PM
MICKEY'S SPLASH ZONE	DECK 9, AFT	10:00 AM - 8:00 PM
QUIET COVE POOL (18+)	DECK 9, FWD	6:00 AM - 12:00 MID

RECREATION

PORT ADVENTURES DESK	DECK 3, MID	
VISTA FITNESS CENTER (18+)	DECK 9, FWD	6:00 AM - 10:00 PM
WIDE WORLD OF SPORTS DECK	DECK 10, FWD	24 HOURS

GENERAL INFORMATION

BUENA VISTA THEATRE	DECK 5, AFT	SHOWTIMES
DISNEY VACATION CLUB DESK	DECK 4, MID	9:00 AM - 11:00 AM 5:00 PM - 10:00 PM
FUNNEL VISION	DECK 9, MID	SHOWTIMES
GUEST SERVICES	DECK 3, MID	24 HOURS
MEDICAL HEALTH CENTER	DECK 1, FWD	9:30 AM - 11:00 AM 4:30 PM - 7:00 PM
ONBOARD SALES DESK	DECK 4, MID	9:00 AM - 12:00 PM 3:30 PM - 6:00 PM 7:30 PM - 10:00 PM
PORT & SHOPPING DESK	DECK 3, MID	
PRELUDES	DECK 4, FWD	5:45 PM - 6:15 PM 8:00 PM - 8:30 PM
QUARTER MASTERS (ARCADE)	DECK 9, MID	24 HOURS
SHUTTERS PHOTO GALLERY	DECK 4, AFT	10:00 AM - 11:00 PM
VISTA SPA AND SALON	DECK 9, FWD	8:00 AM - 10:00 PM
WALT DISNEY THEATRE	DECK 4, FWD	SHOWTIMES

SHOPPING

ART GALLERY	DECK 4, MID	1:00 PM - 4:00 PM 7:00 PM - 9:00 PM
MICKEY'S MATES	DECK 4, FWD	9:00 AM - 11:00 PM
RADAR TRAP (DUTY FREE)	DECK 3, FWD	6:00 PM - 11:00 PM
TREASURE KETCH	DECK 4, FWD	9:00 AM - 11:00 PM

IMPORTANT NUMBERS

Fire/Security: 7-3001
Medical EMERGENCY: 7-3000
Health Center: 7-1923

DINNER MENU
Animator's Palate: Til We Meet Again
Parrot Cay: Til We Meet Again
Triton's: Til We Meet Again
Dining Times: 5:45 p.m. & 8:15 p.m.

DRINK OF THE DAY
Blue Margarita (Alcoholic)
Mango Crush (Non-Alcoholic)

WEATHER FORECAST
Today: Partly Sunny
High: 62°F/17°C
Tomorrow: Partly Cloudy
High: 64°F/18°C

Evening Attire: Cruise Casual

DINING & LOUNGES

BREAKFAST

BEACH BLANKET BUFFET	DECK 9, AFT	7:30 AM - 10:45 AM
GOOFY'S GALLEY	DECK 9, AFT	7:00 AM - 9:00 A.M.
PARROT CAY	DECK 3, AFT	8:30 AM - 10:45 AM
TRITON'S (À-LA CARTE)	DECK 3, MID	8:00 AM - 9:30 AM

LUNCH

BEACH BLANKET BUFFET	DECK 9, AFT	12:00 PM - 2:00 PM
GOOFY'S GALLEY	DECK 9, AFT	10:30 AM - 7:00 PM
PARROT CAY	DECK 3, AFT	12:15 PM - 1:30 PM
PINOCCHIO'S PIZZERIA	DECK 9, MID	10:30 AM - 6:00 PM
PLUTO'S DOG HOUSE	DECK 9, AFT	10:30 AM - 6:00 PM
TRITON'S	DECK 3, MID	12:00 PM - 1:30 PM

DINNER

ANIMATOR'S PALATE	DECK 4, AFT	5:45 PM & 8:15 PM
PARROT CAY	DECK 3, AFT	5:45 PM & 8:15 PM
TRITON'S	DECK 3, MID	5:45 PM & 8:15 PM
PALO* (18+)	DECK 10, AFT	6:00 PM - 9:00 PM
PLUTO'S DOG HOUSE	DECK 9, AFT	6:00 PM - 9:30 PM

LATE NIGHT SNACKS

DIVERSIONS	DECK 3, FWD	11:00 PM - 12:00 MID
ICE CREAM AT GOOFY'S GALLEY	DECK 9, AFT	7:00 PM - 12:00 MID
PINOCCHIO'S PIZZERIA	DECK 9, MID	9:30 PM - 12:00 MID
PROMENADE LOUNGE	DECK 3, AFT	11:00 PM - 12:00 MID

ADDED FEATURES

BEVERAGE STATION	DECK 9, AFT, PORT SIDE	24 HOURS
ROOM SERVICE	DIAL 6801 OR 6802	24 HOURS

ENTERTAINMENT - LOUNGES - BARS

Adults must be 21 and older to consume alcoholic beverages.

CADILLAC LOUNGE (18+)	DECK 3, FWD	5:30 PM - 12:00 MID
COVE CAFE (18+)	DECK 9, MID	6:30 AM - 12:00 MID
DIVERSIONS (18+ AFTER 9:00 PM)	DECK 3, FWD	11:00 AM - 12:00 MID
INTERNET CAFE	DECK 3, AFT	24 HOURS
OUTLOOK CAFE (18+)	DECK 10, MID	6:30 AM - 12:00 MID
PINOCCHIO'S PIZZERIA	DECK 9, MID	9:30 AM - 12:00 MID
PLUTO'S DOG HOUSE	DECK 9, AFT	10:30 AM - 6:00 PM
PRELUDES	DECK 4, FWD	5:45 PM - 6:15 PM 8:00 PM - 8:30 PM
PROMENADE LOUNGE (FAMILY)	DECK 3, AFT	8:00 AM - 12:00 MID
SIGNALS (18+)	DECK 9, FWD	9:30 AM - 9:00 PM
STUDIO SEA	DECK 4, MID	SHOWTIMES
WAVEBANDS (18+)	DECK 3, FWD	7:30 PM - 2:00 AM

Public Health Advisory: Consuming raw or under-cooked meats, poultry, seafood, shellfish, or eggs may increase your risk for food borne illness, especially if you have certain medical condition