

# PERSONAL NAVIGATOR

WEDNESDAY, MAY 28, 2014

Sunrise: 4:08 a.m. Sunset: 9:34 p.m.  
Evening Attire: Cruise Casual

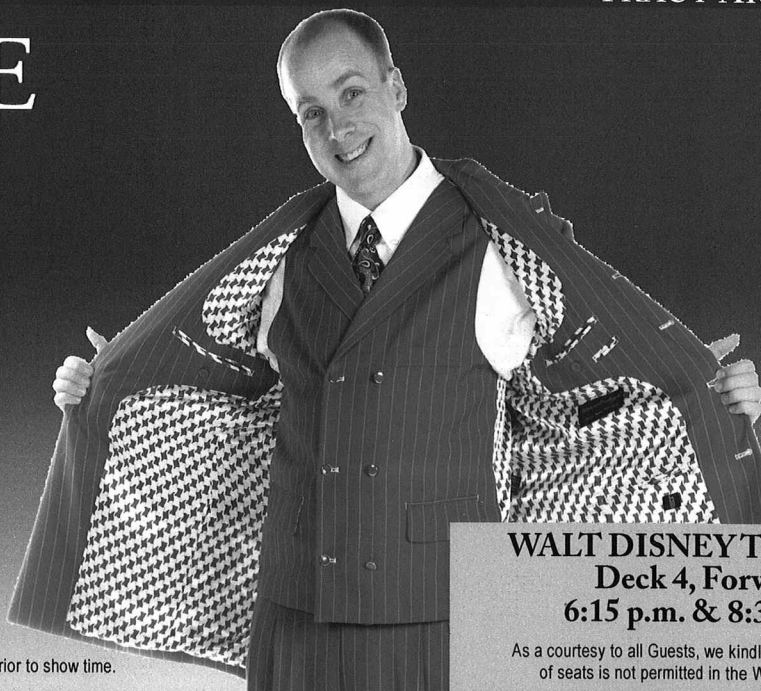
Today: Partly Cloudy High: 50°F/10°C  
Tomorrow: Partly Sunny High: 66°F/19°C  
TRACY ARM, ALASKA

## SHOWTIME

featuring

# ADAM ACE

**Enjoy the Comedy  
of Adam Ace in this  
fun family cabaret show!**



**WALT DISNEY THEATRE**  
Deck 4, Forward  
6:15 p.m. & 8:30 p.m.



As a courtesy to all Guests, we kindly advise that the saving of seats is not permitted in the Walt Disney Theatre.

Assistance available at the entrance to the Walt Disney Theatre 30 minutes prior to show time.

## Welcome to Tracy Arm

Tracy Arm Fjord is located in the Inside Passage approximately 45 miles south of Juneau. Cruise ships wind their way through the fjord which is located in the Tongass National Forest. The surrounding mountains are approximately 7,000 feet high and numerous waterfalls, created by melting snowcaps, can be seen along the route. The Twin Sawyer Glaciers, North Sawyer and South Sawyer, are located at the end of Tracy Arm. Wildlife is abundant and native animals include but are not limited to whales, sea lions, bald eagles, black bears and mountain goats. Due to the microscopic sediment or glacial flour, the water is a glacial blue.



### TRACY ARM NARRATION

Tracy Arm view and narration available on Decks 4, 9 and 10. The narration will also be broadcast on Channel 251.

Decks 4, 9 and 10,  
12:30 p.m. to 5:00 p.m.

## Don't Miss:

### Q&A with Robert Creighton

Wavebands, Deck 3, Forward - 9:30 a.m.

You've seen him perform, now is your chance to ask your questions and get an autograph from this Broadway star.

### Disney's Innovations: Theme Parks (18+)

Diversions, Deck 3, Forward - 9:30 a.m.

Join us for our presentation showing the "Top 10" greatest innovations that the Walt Disney Company has introduced to theme parks.

### Icfields and Glaciers in Southeast Alaska featuring Doug Jones

Walt Disney Theatre, Deck 4, Forward - 9:30 a.m.

Ice has been an integral part of life in Alaska for thousands of years. Doug Jones will describe the formation, power and endurance of glacial ice and what you will see as you enter Tracy Arm, a fjord in Southeast Alaska's coastline. The Stikine Icefield surrounding Tracy Arm has been surprising researchers and Doug will share how that work is done and what has been learned.

### Captain's Corner

Outlook, Deck 10, Midship - 10:15 a.m.

Join the Captain for an informal Q&A session about the operation of the Disney Wonder.

### PRESERVING QUIET

Disney Cruise Line recognizes the importance of quiet and solitude to preserve wilderness values and marine ecology, and will minimize vessel announcements, Funnel Vision audio and music on the open deck while we are in our ports of call and sailing through Tracy Arm. Narration is at maximum levels permitted by local regulations and may seem quiet. Narration will also be broadcast on channel 251.



Book your next cruise onboard and save 10% on prevailing rates as quoted on [disneycruise.com](http://disneycruise.com). Plus, get an onboard credit and special deposit rate! Visit the Future Cruise Sales Desk for more information.

## DINNER MENU

Animator's Palate: Pacific Rim Cuisine  
Parrot Cay: Caribbean Island Cuisine  
Triton's: French Cuisine

## DRINK OF THE DAY

Sunken Treasure (Alcoholic)  
Espresso Chiller (Non Alcoholic)

### IMPORTANT NUMBERS

Fire/Security: 7-3001  
Medical Emergency: 7-3000  
Health Center: 7-1923

# ADULT ACTIVITY HIGHLIGHTS



## VISTA SPA FITNESS CLASSES & SEMINARS

*Sunrise Stretch* - Vista Spa Fitness Center - 7:00 a.m.  
*Tour De Cycle* - Vista Spa Fitness Center - 8:30 a.m.  
*Acupuncture Seminar: The Wonders of Acupuncture* - Outlook Cafe - 9:15 a.m.  
*Body Sculpt Boot Camp* - Vista Spa Fitness Center - 9:30 a.m.  
*How to Increase Your Metabolism* - Outlook Cafe - 11:15 a.m.  
*Sunglow Makeover* - Vista Spa & Salon - 2:00 p.m.  
*Acupuncture Seminar: Stress, Longevity and Chinese Medicine* - Outlook Cafe - 3:15 p.m.  
*Complimentary Footprint Analysis* - Vista Spa Fitness Center - 4:30 p.m.

## TASTING CLASSES

*Champagne Tasting (21+)* - Cadillac Lounge - 4:00 p.m.  
 Please make reservations for tastings at Guest Services for a nominal fee.  
 Tasting Seminars are only for Guests 21 and Older.

## CLUB 18\*21 - LUNCH

*Triton's, Deck 3, Midship* - 12:00 p.m.  
 Get to know your fellow 18\*21 guests over a spot of lunch.

## CLUB 18\*21 - SOCIAL

*Diversions, Deck 3, Forward* - 10:00 p.m.  
 Come and socialize with your fellow cruisers

## DISNEY'S ART OF ENTERTAINING: SIGNATURE ENTREE

*Studio Sea, Deck 4, Midship* - 10:15 a.m.  
 Today we show you how to prepare Lemon-Thyme Marinated Chicken.  
 Join us for an entertaining look at preparing this specialty. Recipes and tastings included.



## DISCO LEGENDS

*Wavebands, Deck 3, Forward* - 10:30 p.m.  
 Put on your platform shoes and hit the dance floor as we catch a disco fever. Our '70s dance party will have you spinning like a disco ball.

# FUN FOR ALL AGES HIGHLIGHTS



## WAKE UP WITH DISNEY JUNIOR

*Studio Sea, Deck 4, Midship* - 9:00 a.m.  
 What happens when you experience unlimited fun with your favorite Disney Junior shows? You get an exciting dance party designed especially for preschoolers ages seven and under.

## CAPTAIN'S CORNER

*Outlook, Deck 10, Midship* - 10:15 a.m.  
 Join the Captain for an informal Q&A session about the operation of the Disney Wonder.

## \$7,000 MEGA JACKPOT BINGO

*Wavebands, Deck 3, Forward* - 11:00 a.m.  
 Don't miss your chance to take home big money! 4 CASH prize games and great raffle prizes to be won! Complete the fourth game in 46 numbers or less and win the \$7,000 Mega Jackpot! Pre Sales start 15 minutes prior to game.

## ANIMATION - STITCH

*Animator's Palate, Deck 4, Aft* - 11:45 a.m.  
 Your Cruise Staff teach you how to draw one of your favorite Disney friends - Stitch.

## CRUISIN' FOR TRIVIA

*Promenade Lounge, Deck 3, Aft* - 12:00 p.m.  
 Navigate your way through a round of questions testing your general knowledge.

## CRAFTS: ORIGAMI CREATIONS

*Promenade Lounge, Deck 3, Aft* - 2:00 p.m.  
 Your Cruise Staff teaches you the ancient art of paper folding.

## DISNEY CRUISE LINE TRIVIA

*Promenade Lounge, Deck 3, Aft* - 4:00 p.m.  
 Navigate your way through a round of questions testing your knowledge of Disney Cruise Line.

## PIN TRADING STATION

*Mickey's Mates, Deck 4, Midship* - 7:15 p.m.  
 A variety of limited-edition pins exclusively designed and created for Disney Cruise Line.

## WHO WANTS TO BE A MOUSEKETEER?

*Studio Sea, Deck 4, Midship* - 7:30 p.m. & 9:30 p.m.  
 Your chance to get in to the "hot seat" and win limited edition prizes. Or, play along as part of our live studio audience.

## MOVIE JACKPOT BINGO

*Wavebands, Deck 3, Forward* - 7:30 p.m.  
 Four CASH prizes and great Disney movie prizes to be won. The snowball jackpot continues to grow and could go at this morning's session. Pre Sales start 15 minutes prior to game.

## DISNEY DISCO

*Studio Sea, Deck 4, Midship* - 10:15 p.m.  
 Join your Cruise Staff as they play some of your favorite Disco tunes.





# YOUTH ACTIVITIES HIGHLIGHTS

## DINE & PLAY

A convenience for families dining at 8:15 p.m., our Youth Activities Counselors will be available at 9:15 p.m. at the entrance of Triton's, Parrot Cay and Animator's Palate dining rooms to bring registered children to join the fun in the Oceaneer Club and Oceaneer Lab.



Deck 5, Aft (7-18500) 9:00 a.m. - 11:00 p.m.

Infants and Toddlers can enjoy toys and activities at Flounder's Reef Nursery. Reservations are first come, first served so please stop by!



Deck 5, Midship (7-1440)  
(3 - 12 years old) 9:00 a.m. - 12:00 mid

### TOY STORY BOOT CAMP

9:15 a.m.

Join Corporal Green in our own version of boot camp as we learn how to have fun - The Toy Story way!

### HATS OFF TO PETER PAN

7:45 p.m.

You'll believe you can fly. All it takes is faith, trust, and pixie dust and a special visit from Peter Pan! Rediscover the magic of Neverland!



Deck 5, Midship (7-1445)  
(3 - 12 years old) 9:00 a.m. - 12:00 mid

### SHAKE IT UP!

10:15 a.m.

You've seen the show; now come learn the move to one of the most popular dances of the summer!

### PICTURE THIS

2:00 p.m.

Create your own professional picture frame and take a photo with a special guest.



Deck 2, Midship (7-5810)  
(11 - 14 years old) 10:00 a.m. - 12:00 mid

### CROWNING OF THE COUCH POTATO

3:00 p.m.

Do you think you know your movies, TV and commercials? Well it's time to test your knowledge on all the recent releases.

### SMOOTHIE TIME

9:00 p.m.

Join us for Smoothies



Deck 11, Midship (7-1456)  
(14 - 17 years old) 11:00 a.m. - 12:00 mid

### CROWNING OF THE COUCH POTATO

1:45 p.m.

Do you think you know your movies, TV and commercials? Well it's time to test your knowledge on all the recent releases.

### GENDER WARS

10:30 p.m.

Join us as we find out who really are the king or queen of the castle.

# BUENA VISTA THEATRE

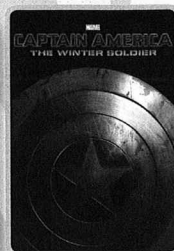
Deck 5, Aft

## Today's Movies

Open Captioning



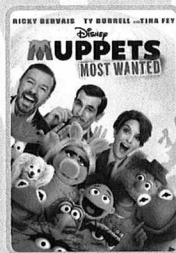
8:30 a.m.  
Duration:  
1 hr 52 mins  
Rating: PG



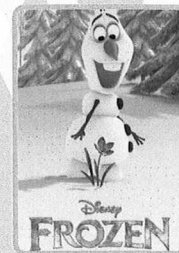
11:00 a.m.  
Duration:  
2 hrs 16 mins  
Rating: PG-13



2:30 p.m.  
Duration:  
2 hrs 5 mins  
Rating: PG-13



5:45 p.m. & 8:15 p.m.  
Duration:  
1 hr 52 mins  
Rating: PG



10:45 p.m.  
Duration:  
1 hr 48 mins  
Rating: PG



### FAMILY GAME SHOW

Your chance to get into the world famous hot seat and win an exclusive prize in our version of the well known television game show.

Studio Sea,  
Deck 4, Midship,  
7:30 p.m. & 9:30 p.m.



### ADULT EXCLUSIVE

Put on your platform shoes and hit the dance floor as we catch the disco fever. The party kicks off with a groovy dance number from the Studio 54 dancers.

WaveBands (18+),  
Deck 3, Forward,  
10:30 p.m.

### YOUTH ACTIVITIES OPEN HOUSE

Open House is an opportunity for all to come and participate in a variety of exciting activities and free time in the Oceaneer Club, Oceaneer Lab, Flounder's Reef Nursery, Vibe and Edge throughout the cruise. During these times secured programming will still be offered in the other venue for those looking to check their children into care.

Edge: 10:00 a.m. - 12:00 p.m. Disney's Oceaneer Lab: 9:00 a.m. - 10:00 a.m.  
Vibe: 11:00 a.m. - 12:00 p.m. Disney's Oceaneer Club: 12:30 p.m. - 5:00 p.m.  
Vibe: 4:00 p.m. - 6:00 p.m. Edge: 6:00 p.m. - 8:00 p.m.

# MORE TO ENJOY WHILE ONBOARD

## MORE MAGIC IN EUROPE

Set sail for Europe! Whether you choose the Mediterranean or northern Europe, you're sure to experience a magical voyage of culture with amazing family adventures - begin your journey today! Visit the Onboard Sales Desk to learn more about our special onboard booking offer.

## DISNEY VACATION CLUB® GROUP PREVIEW

Want to learn more about taking magical vacations year after year? Please see a Disney Vacation Club representative on Deck 4, Midship, or call 7-2805 from your stateroom phone for more information about our interactive group presentation.

## PORT AND SHOPPING INFORMATION

Skagway Shopping Highlights. 10:15 a.m. Promenade Lounge, Deck 3, Midship. Don't miss a thing in Skagway today. Join your Port Shopping Guide, Maureen, for your last chance to learn about the amazing shopping in Skagway! Free charm for all in attendance and a raffle to win a Diamond pendant.

## QUARTER MASTERS ARCADE

You can drive a Hummer, be The Fast and The Furious, plus hop on a Crazy Taxi with no license required! All this at Quarter Masters Arcade located on Deck 9, Midship.

## Connect @ Sea

We are now offering a NEW and improved Internet service to stay connected on your cruise like no other in the industry! Internet packages range from \$0.25 per MB - \$89.00 (1000 MB package). For more information contact your Connect@Sea Expert or Guest Services onboard.

Disney Cruise Line.

## PORT ADVENTURES

Known as the "Gateway to the Klondike", Skagway celebrates its place as the one-time threshold of the late 19th-century Klondike Gold Rush with several must-see destinations designed with the entire family in mind. Choose the White Pass Scenic Railway as it climbs nearly 3,000 feet over 20 miles of steep grades and cliff-hanging turns, explore the beautiful scenery on one of our many hiking port adventures or get ready for an intimate Rib Boating Adventure through the Lynn Canal on our Ocean Raft Nature Adventure. Visit the Port Adventures Desk, located Deck 3, Midship, and our friendly Port Adventures team will assist in planning your day.

## SHOPPING

### PIN TRADING

Check out the Disney Cruise Line® pins, such as the Alaska 2014 commemorative pin, when you visit Mickey's Mates, Deck 4, Forward. Later, join the Officers of the Disney Wonder® Cruise Ship for pin trading fun at 7:15 p.m. in the Lobby Atrium, Deck 3, Midship.

### SOPHIA FIORI DIAMOND TRUNK SHOW

Sophia Fiori is the world's leader in colored diamonds and jeweler to the stars. Your Sophia Fiori Jewelry Stylist and diamond industry expert has brought onboard over \$1 Million in Diamonds and Tanzanite Jewelry at all price points from \$500 up to extravagant connoisseur pieces. Treasure Ketch, Deck 4, Forward.

### MARC JACOBS WATCHES

From sheik elegance to classic thru to everyday wear there is a Marc Jacobs watch to match your lifestyle. Created with passion and designed to perfection these timepieces make that ultimate statement. Marc Jacobs Collection available in Treasure Ketch.

### PHILIP STEIN WATCHES ARRIVE!

Philip Stein Watches arrive onboard Disney Cruise Line. Philip Stein watches are not just a watch, but an element of a healthy and well-balanced lifestyle. People who wear Philip Stein care about their looks as well as their overall well-being. The timepieces reflect the attitude and personal values of the wearer. See the entire Collection today at Treasure Ketch, All at great Duty Free Prices.

### H2O BATH COLLECTION

Treat yourself to the ultimate indulgence with H2O products. H2O offers shampoo, conditioner, lip balm, hydrating body lotion and after sun care. Available in Treasure Ketch.

### ART GALLERY - THOMAS KINKADE PAINTINGS

Stop by the Art Gallery today to view our selection of Thomas Kinkade Limited Edition Disney paintings. While there, see if you can find some hidden characters in the artwork. Deck 4, Midship. Our Hostess is available between 7:00 p.m. and 9:00 p.m. for any hints!



## VISTA SPA

Deck 9, Forward - Phone: 7-1465

## CLEOPATRA SPECIAL

Today only! Receive the below 50 minute Treatment for only \$159  
Hot Stone Back Massage, Skin Nourishing Body Wrap, Foot Pressure  
Point Massage, Frangipani Scalp Massage

18% Gratuity is automatically added to all Spa services, specials and amenities.

## 2014 DISNEY CRUISE LINE MERCHANDISE

Step into Mickey's Mates today and commemorate your Disney cruise with a wide selection of 2014 Disney Cruise Line Merchandise. Mickey's Mates, Deck 4, Forward.



## Shutters SAY CHEESE!

Watch out for photographers on deck for scenic photos while in Tracy Arm. Check out our Binoculars in Shutters to enjoy the beautiful sceneries of Alaska. Hurry! Limited stocks only.

\*Visit Shutters on Deck 4, Aft, to view your formal photographs and ask about how you can Get The Picture!

## IMPORTANT INFORMATION

### Security Notice

All Guests (including Children) who wish to disembark or embark the ship are required to present their Key to the World card at the gangway. A photo ID is also required for those Guests who are 18 years of age or older. Guests under the age of 18 are required to have a parent, guardian or other responsible adult sign an authorization form at the Guest Service Desk if they wish to go ashore unaccompanied or with any adult from another stateroom.

### Sunscreen/Insect Repellent Advisory

Use sunscreen first and protect against mosquito borne illnesses by applying insect repellent on top of sunscreen when going ashore.

### Cold and Flu Reminder

Please wash hands frequently and thoroughly, particularly before meals. Contact the Health Center by dialing 7-1923, should anyone in your party become ill.

### Inclement Weather

For the safety of all Guests, outdoor events may be changed due to unforeseen weather conditions.

### Corridor Quiet Hours

As a courtesy to all our Guests, please recognize quiet hallway hours from 10:00 p.m. til 8:00 a.m.

### Environmental Message

With Disney's commitment to the Environment please refrain from throwing anything over the Ship's side. Thank you.

### No Reserved Seats Policy

As a courtesy to all Guests we kindly advise that the saving of seats is not permitted in the Walt Disney Theatre, and the saving of the sun loungers is not permitted on Deck 9 and 10. Items left unattended will be returned to lost and found at Guest Services, Deck 3, Midship.

### Smoking

For the comfort of our guests, the following areas are designated as smoking areas:

- Deck 10, forward, Starboard side
- Deck 9, forward, Starboard side at Quiet Cove
- Deck 4, aft, starboard side from 6:00 p.m. to 6:00 a.m. only (all of Deck 4 is non-smoking from 6:00 a.m. to 6:00 p.m.)

Smoking is prohibited inside all guest staterooms and on stateroom verandahs. Guest found smoking in their staterooms or on their verandahs will be charged a \$250 stateroom recovery fee.

Electronic cigarettes may only be used in designated smoking areas.

### Walt Disney Theatre

Theatrical performances may use artificial fog, strobe lights, pyrotechnics and other special effects. For the safety of our performers and the comfort of those around you, the use of any photography or video recording device or any electronic equipment is prohibited.

### Verandah Safety


Please do not leave any combustible materials on your balcony when not present in your stateroom for safety reasons.



Morning	8:30	8:45	9:00	9:15	9:30	9:45	10:00	10:15	10:30	10:45	11:00	11:15	11:30	11:45	12:00	12:15	12:30	12:45	1:00	1:15	1:30	
FUNNEL VISION	To preserve the peacefulness of the wilderness, the audio on Funnel Vision and music on the open decks will be suspended.																TRACY ARM VIEW FROM THE BRIDGE					
BUENA VISTA THEATRE	Muppets Most Wanted (PG)								Captain America: The Winter Soldier (PG-13)													
	Duration: 1 Hour 52 Minutes								Duration: 2 Hours 16 Minutes													
CHARACTERS		Rapunzel Preludes		Cinderella Preludes		Ariel Preludes		Belle Preludes														
FUN FOR ALL AGES	Toddler Time for Families Flounder's Reef		ICEFIELDS AND GLACIERS IN SOUTHEAST ALASKA ALASKAN NATURALIST PRESENTATION				Walt Disney Theatre		Bingo Pre Sales	\$7,000 Mega Jackpot 	Wavebands	Cruisin' for Trivia Promenade Lounge		 TRACY ARM VIEW & NARRATION DECKS 4, 9 AND 10  Narration will also be broadcast on Channel 251								
			Q&A with Robert Creighton Wavebands		Captain's Corner Outlook		Animation - Stitch Animator's Palate															
			Crafts: Door Hangers Promenade Lounge		Animation - Goofy Animator's Palate		Port & Shopping Talk Promenade Lounge															
ADULTS	Friends of Bill W. Cadillac Lounge		Disney's Innovations: Theme Parks Diversions				Disney's Art of Entertaining: Signature Entree Studio Sea				How to Increase Your Metabolism Outlook Cafe		Club 18*21 - Lunch Triton's		Singles' Lunch Triton's							
	Tour De Cycle Vista Spa Fitness Center		Walk A Mile Preludes								80's Music Trivia Diversions											
VIBE 14-17 YEARS OLD	Youth Activities Open House										Coffee Break				Ultimate Challenge							
EDGE 11-14 YEARS OLD	Youth Activities Open House												Q&A Session				Jam Session					
OCEANEER LAB 3-12 YEARS OLD	Youth Activities Open House						Shake It Up!		Wii Challenge				Lunch									
OCEANEER CLUB 3-12 YEARS OLD	Toy Story Boot Camp				Picture This		Go Fetch				Aladdin's Fun Adventures		Youth Activities Open House				Base Camp					



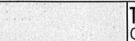
Symbol for activities that will be repeated during the cruise

FOLD

Afternoon	1:45	2:00	2:15	2:30	2:45	3:00	3:15	3:30	3:45	4:00	4:15	4:30	4:45	5:00	5:15	5:30	5:45	6:00	6:15	6:30	6:45					
FUNNEL VISION	TRACY ARM VIEW FROM THE BRIDGE																									
BUENA VISTA THEATRE	Saving Mr. Banks (PG-13) Duration: 2 Hours 5 Minutes										Muppets Most Wanted (PG) Duration: 1 Hour 52 Minutes															
CHARACTERS														Goofy Lobby Atrium (P)		Mickey & Minnie Lobby Atrium (P)										
														Donald Dk 4, Mid		Chip & Dale Dk 4, Mid										
FUN FOR ALL AGES	 <div>TRACY ARM VIEW &amp; NARRATION DECKS 4, 9 AND 10 <small>Narration will also be broadcast on Channel 251</small></div>																		Live Music with Roberto & Daria Promenade Lounge				<b>Showtime:</b> The Comedy of Adam Ace Walt Disney Theatre			
	Crafts: Origami Creations Promenade Lounge		Who Am I? Promenade Lounge		Disney Cruise Line Trivia Promenade Lounge		Live Music with Dreem Lobby Atrium																			
	ADULTS	Informal Bridge Play Diversions						Stress, Longevity and Chinese Medicine Outlook Cafe				Footprint Analysis Vista Spa Fitness Center														
	Sunglow Makeover Vista Spa & Salon								Champagne Tasting (21+) Cadillac Lounge		Live Guitar with Dave Sharp Cadillac Lounge															
VIBE 14-17 YEARS OLD	Crowning of the Couch Potato		Q&A Session						Youth Activities Open House 🏠						Hoop It Up!											
EDGE 11-14 YEARS OLD	Jam Session				Crowning of the Couch Potato				Ice Cream Social				Scavenger Hunt				Youth Activities Open House 🏠									
OCEANEER LAB 3-12 YEARS OLD		Picture This 📷				Float Fun Trivia 🎲						Oceaneer Rangers 🦋						Dinner								
OCEANEER CLUB 3-12 YEARS OLD	Base Camp 🏕️															Parachute Games				Dinner in Disney's Oceaneer Lab		Coloring Time				
	Youth Activities Open House 🏠																									

Fold along the dotted lines and take me with you so you don't miss any of the fun!

FOLD

Evening	7:00	7:15	7:30	7:45	8:00	8:15	8:30	8:45	9:00	9:15	9:30	9:45	10:00	10:15	10:30	10:45	11:00	11:15	11:30	11:45	12:00
FUNNEL VISION	To preserve the peacefulness of the wilderness, the audio on Funnel Vision and music on the open decks will be suspended.																				
BUENA VISTA THEATRE	Muppets Most Wanted (PG) Duration: 1 Hour 52 Minutes										Frozen (PG) Duration: 1 Hour 48 Minutes										
CHARACTERS		Donald Lobby Atrium (P)		Mickey & Minnie Lobby Atrium (P)					Donald Lobby Atrium (P)			Mickey & Minnie Lobby Atrium (P)									
		Pluto Dk 4, Mid		Koda Dk 4, Mid					Goofy Dk 4, Mid			Chip & Dale Dk 4, Mid									
FUN FOR ALL AGES		Bingo Pre Sales	Movie Jackpot BINGO Wavebands			Showtime: The Comedy of Adam Ace Walt Disney Theatre			 Studio Sea		Disney Disco Studio Sea										
		Pin Trading Station Mickey's Mates	Who Wants to be a Mouseketeer? Studio Sea						Live Music with Roberto & Daria Promenade Lounge		Live Music with Roberto & Daria Promenade Lounge										
ADULTS		Game Show: The Wheel Diversions								Cruise Staff DJ Wavebands		 DJ Requests Wavebands									
		Live Piano with Tom Scott Cadillac Lounge			Live Guitar with Dave Sharp Cadillac Lounge			Tom Scott LIVE Cadillac Lounge		Club 18*21 - Social Diversions		 Tom Scott LIVE Cadillac Lounge									
VIBE 14-17 YEARS OLD		Wii Challenge			Smoothie Hour						Guitar Hero Challenge		Gender Wars								
EDGE 11-14 YEARS OLD	Youth Activities Open House 🎮				Craft Corner			Smoothie Time			Wii Competition		Gender Wars								
OCEANEER LAB 3-12 YEARS OLD	Ice Cream Social					Piston Cup Challenge					GAGA Ball 🎮		Youth Activities Open House 🎮								
OCEANEER CLUB 3-12 YEARS OLD	Coloring Time			Hats Off to Peter Pan 🎮		Game Challenge						The Royal Ball 🎮				Cartoon Time					

IN THE SPOTLIGHT SERIES  
SOLVE IT! SERIES

JUMP UP! SERIES  
CREATE & INVENT SERIES  
OPEN HOUSE

CLUBHOUSE SERIES  
STORYBOOK SERIES

WEDNESDAY, MAY 28, 2014 - TRACY ARM, ALASKA

# BUENA VISTA THEATRE

Deck 5, Aft

Open Captioning



8:30 a.m. Duration: 1 hr 52 mins Rating: PG	11:00 a.m. Duration: 2 hrs 16 mins Rating: PG-13	2:30 p.m. Duration: 2 hrs 5 mins Rating: PG-13	5:45 p.m. & 8:15 p.m. Duration: 1 hr 52 mins Rating: PG	10:45 p.m. Duration: 1 hr 48 mins Rating: PG
--	---	---	---	---

## Character Appearances

**RAPUNZEL**  
Preludes - 8:45 a.m.

**CINDERELLA**  
Preludes - 9:15 a.m.

**ARIEL**  
Preludes - 9:45 a.m.

**BELLE**  
Preludes - 10:15 a.m.

**DONALD DUCK**  
Deck 4, Midship - 5:15 p.m.  
Lobby Atrium (P)  
7:15 p.m. & 9:30 p.m.

**GOOFY**  
Lobby Atrium (P) - 5:15 p.m.  
Deck 4, Midship - 9:30 p.m.

**CHIP & DALE**  
Deck 4, Midship  
5:45 p.m. & 10:00 p.m.

**MICKEY & MINNIE**  
Lobby Atrium (P)  
5:45 p.m., 7:45 p.m.  
& 10:00 p.m.

**PLUTO**  
Deck 4, Midship - 7:15 p.m.

**KODA**  
Deck 4, Midship - 7:45 p.m.



(P) - Port Side (S) - Starboard Side

Don't forget your Camera to capture those Magical Moments!

Check here each day for all of today's Character Appearances or refer to the Character Board in the Lobby Atrium.

Meet-and-Greets will be advertised for the length of time the line will be open. To avoid disappointment, please meet at start time of appearances.

## YOUTH ACTIVITIES THEMED EXPERIENCES

**CLUBHOUSE SERIES**  
focuses on movement and features content which appeals to younger children.

**STORYBOOK SERIES**  
is designed with a strong connection to the Disney classic stories.

**JUMP UP! SERIES**  
includes large group games & movement-oriented activities.

**CREATE & INVENT SERIES**  
will have a tactile focus allowing children to create and admire their work.

**IN THE SPOTLIGHT SERIES**  
focuses on children's stage presence with lots of activities and enthusiasm.

**SOLVE IT! SERIES**  
are less active, but will challenge children with problem/solutions-based activities.

### YOUTH ACTIVITIES OPEN HOUSE

Activities for families, adults and children of all ages to enjoy together.

## SHIP DIRECTORY

### YOUTH ACTIVITIES

DISNEY'S OCEANEER CLUB	DECK 5, MID	9:00 AM - 12:00 MID
DISNEY'S OCEANEER LAB	DECK 5, MID	9:00 AM - 12:00 MID
EDGE	DECK 2, MID	10:00 AM - 12:00 MID
VIBE	DECK 11, MID	11:00 AM - 12:00 MID
FLOUNDER'S REEF NURSERY	DECK 5, AFT	9:00 AM - 11:00 PM

### POOLS

Children under 12 years of age must have adult supervision in all pools.

GOOFY'S POOL	DECK 9, MID	10:00 AM - 8:00 PM
MICKEY'S POOL	DECK 9, AFT	10:00 AM - 8:00 PM
MICKEY'S SLIDE	DECK 9, AFT	1:00 PM - 5:00 PM
MICKEY'S SPLASH ZONE	DECK 9, AFT	10:00 AM - 8:00 PM
QUIET COVE POOL (18+)	DECK 9, FWD	6:00 AM - 12:00 MID

### RECREATION

PORT ADVENTURES DESK	DECK 3, MID	9:00 AM - 1:00 PM 7:00 PM - 8:30 PM
VISTA FITNESS CENTER (18+)	DECK 9, FWD	6:00 AM - 10:00 PM
WIDE WORLD OF SPORTS DECK	DECK 10, FWD	24 HOURS

### GENERAL INFORMATION

BUENA VISTA THEATRE	DECK 5, AFT	SHOWTIMES
DISNEY VACATION CLUB DESK	DECK 4, MID	6:00 PM - 10:00 PM
FUNNEL VISION	DECK 9, MID	SHOWTIMES
GUEST SERVICES	DECK 3, MID	24 HOURS
MEDICAL HEALTH CENTER	DECK 1, FWD	9:30 AM - 11:00 AM 4:30 PM - 7:00 PM
ONBOARD SALES DESK	DECK 4, MID	9:00 AM - 11:30 AM 5:00 PM - 6:00 PM 7:30 PM - 10:00 PM
PORT & SHOPPING DESK	DECK 3, MID	7:30 PM - 8:30 PM
PRELUDES	DECK 4, FWD	5:45 PM - 6:15 PM 8:00 PM - 8:30 PM
QUARTER MASTERS (ARCADE)	DECK 9, MID	24 HOURS
SHUTTERS PHOTO GALLERY	DECK 4, AFT	10:00 AM - 11:00 PM
VISTA SPA AND SALON	DECK 9, FWD	8:00 AM - 10:00 PM
WALT DISNEY THEATRE	DECK 4, FWD	SHOWTIMES

### SHOPPING

ART GALLERY	DECK 4, MID	7:00 PM - 9:00 PM
MICKEY'S MATES	DECK 4, FWD	9:00 AM - 10:30 PM
RADAR TRAP (DUTY FREE)	DECK 3, FWD	6:00 PM - 10:30 PM
TREASURE KETCH	DECK 4, FWD	9:00 AM - 10:30 PM

## IMPORTANT NUMBERS

Fire/Security: 7-3001  
Medical EMERGENCY: 7-3000  
Health Center: 7-1923

<b>DINNER MENU</b>	Animator's Palate: Pacific Rim Cuisine	<b>DRINK OF THE DAY</b>	Sunken Treasure (Alcoholic)	<b>WEATHER FORECAST</b>	Today: Partly Cloudy High: 50°F/10°C
	Parrot Cay: Caribbean Island Cuisine		Espresso Chiller		Tomorrow: Partly Sunny High: 66°F/19°C
	Triton's: French Cuisine		Of (Non - Alcoholic)		

Dining Times: 5:45pm & 8:15pm  
Evening Attire: Cruise Casual

## DINING & LOUNGES

### BREAKFAST

BEACH BLANKET BUFFET	DECK 9, AFT	7:00 AM - 10:30 AM
GOOFY'S GALLEY	DECK 9, AFT	6:30 AM - 9:00 AM
TRITON'S (À-LA CARTE)	DECK 3, MID	8:00 AM - 9:30 AM

### LUNCH

BEACH BLANKET BUFFET	DECK 9, AFT	11:45 PM - 2:00 PM
GOOFY'S GALLEY	DECK 9, AFT	10:30 AM - 7:00 PM
PINOCCHIO'S PIZZERIA	DECK 9, MID	10:30 AM - 6:00 PM
PLUTO'S DOG HOUSE	DECK 9, AFT	10:30 AM - 6:00 PM
TRITON'S	DECK 3, MID	12:00 PM - 1:30 PM

### DINNER

ANIMATOR'S PALATE	DECK 4, AFT	5:45 PM & 8:15 PM
PARROT CAY	DECK 3, AFT	5:45 PM & 8:15 PM
TRITON'S	DECK 3, MID	5:45 PM & 8:15 PM
PALO* (18+)	DECK 10, AFT	6:00 PM - 9:00 PM
BEACH BLANKET (À-LA CARTE)	DECK 9, AFT	6:30 PM - 8:30 PM
PLUTO'S DOG HOUSE	DECK 9, AFT	6:00 PM - 9:30 PM

### LATE NIGHT SNACKS

DIVERSIONS	DECK 3, FWD	11:00 PM - 12:00 MID
ICE CREAM AT GOOFY'S GALLEY	DECK 9, AFT	7:00 PM - 12:00 MID
PINOCCHIO'S PIZZERIA	DECK 9, MID	9:30 PM - 12:00 MID
PROMENADE LOUNGE	DECK 3, AFT	11:00 PM - 12:00 MID

### ADDED FEATURES

BEVERAGE STATION	DECK 9, AFT, PORT SIDE	24 HOURS
ROOM SERVICE	DIAL 6801 OR 6802	24 HOURS

### ENTERTAINMENT - LOUNGES - BARS

Adults must be 21 and older to consume alcoholic beverages.

CADILLAC LOUNGE (18+)	DECK 3, FWD	5:30 PM - 12:00 MID
COVE CAFE (18+)	DECK 9, MID	6:00 AM - 12:00 MID
DIVERSIONS (18+ AFTER 9:00 PM)	DECK 3, FWD	11:00 AM - 3:15 PM 6:00 PM - 12:00 MID
INTERNET CAFE	DECK 3, AFT	24 HOURS
OUTLOOK CAFE (18+)	DECK 10, MID	6:00 AM - 12:00 MID
PINOCCHIO'S PIZZERIA	DECK 9, MID	9:30 AM - 12:00 MID
PLUTO'S DOG HOUSE	DECK 9, AFT	10:30 AM - 6:00 PM
PRELUDES	DECK 4, FWD	5:45 PM - 6:15 PM 8:00 PM - 8:30 PM
PROMENADE LOUNGE (FAMILY)	DECK 3, AFT	8:00 AM - 12:00 MID
SIGNALS (18+)	DECK 9, FWD	9:30 AM - 9:00 PM
STUDIO SEA	DECK 4, MID	SHOWTIMES
WAVEBANDS (18+)	DECK 3, FWD	7:30 PM - 2:00 AM

Public Health Advisory: Consuming raw or under-cooked meats, poultry, seafood, shellfish, or eggs may increase your risk for food borne illness, especially if you have certain medical condition