


PERSONAL NAVIGATOR

TUESDAY, JUNE 3, 2014

Sunrise: 4:21 a.m. Sunset: 9:06 p.m.
Evening Attire: Formal

Today: Partly Sunny High: 60°F/16°C
Tomorrow: Partly Sunny High: 54°F/12°C

DAY AT SEA



THE GOLDEN MICKEYS

WALT DISNEY THEATRE
DECK 4, FORWARD
6:15 P.M. & 8:30 P.M.

As a courtesy to all Guests, we kindly advise that the saving of seats is not permitted in the Walt Disney Theatre.

Assistance available at the entrance to the Walt Disney Theatre 30 minutes prior to show time.

Disney WONDER Fun Facts

Tonnage: 83,308 gross, 53,899 net

Length Overall: 294m / 964ft

(height of Eiffel Tower is 986ft)

Maximum Speed: 26 knots (30 miles per hour)

Important Dates

Keel Laid: May 15, 1997

Launch Date: July 14, 1999

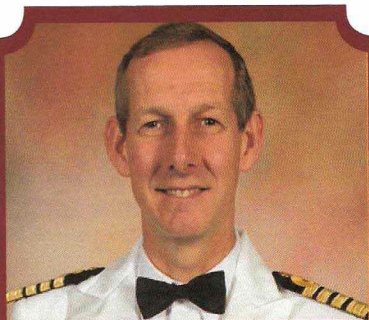
Inaugural Cruise: October 1, 1999

* The anchor of the Disney Wonder weighs 34,250 lbs (15,569 kg) - the same weight as three elephants.

* Over 50 nationalities make up the 1000 Crew members onboard.

* Steamboat Willie stands proudly 10 ft tall on the bow of the ship. There are other characters in the artwork around him.

* Donald and his nephew Huey hang painting the finishing touches on the stern.



WELCOME RECEPTION

Enjoy a cocktail and mingle with the Officers of the Disney Wonder.

**Lobby Atrium, Deck 3, Midship,
5:15 p.m. & 7:30 p.m.**

There's also an exclusive photo opportunity with Captain Guus.

**Lobby Atrium, Deck 3, Midship
7:30 p.m.**

Don't Miss:

Into the Wild featuring Doug Jones

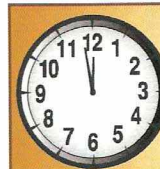
Walt Disney Theatre, Deck 4, Forward - 9:30 a.m.

One of the largest social and economic impacts to Southeast Alaska in recorded history was the Klondike Gold Rush. Doug Jones will introduce you to a few characters who felt the lure of gold and traveled to the Klondike to participate in the gold rush. The route you are taking north was the most popular way to get there and Doug will show you some of the water craft used and gear taken along. Step back in time and see how those characters fared along the journey and what they found in the Klondike.

80's Flashback (18+)

Wavebands, Deck 3, Forward - 11:15 p.m.

The 80's are back! Join your Cruise Staff team, in testing your 80's knowledge in this high energy 80's revival.



TIME ZONE CHANGE

Remember to turn your clocks
BACK 1 HOUR upon retiring on
TUESDAY evening, or first thing
WEDNESDAY morning.



Book your next cruise onboard and save 10% on prevailing rates as quoted on disneycruise.com. Plus, get an onboard credit and special deposit rate! Visit the Future Cruise Sales Desk for more information.

DINNER MENU

Animator's Palate: Golden Mickeys
Parrot Cay: Golden Mickeys
Triton's: Golden Mickeys

DRINK OF THE DAY

Ocean Pearl (Alcoholic)
Passion Creme Freeze (Non Alcoholic)

IMPORTANT NUMBERS

Fire/Security: 7-3001
Medical Emergency: 7-3000
Health Center: 7-1923

ADULT ACTIVITY HIGHLIGHTS



VISTA SPA FITNESS CLASSES & SEMINARS
Sunrise Stretch - Vista Spa Fitness Center - 7:00 a.m.
Tour De Cycle - Vista Spa Fitness Center - 8:30 a.m.
Body Sculpt Boot Camp - Vista Spa Fitness Center - 9:30 a.m.
Introduction to Acupuncture - Outlook Cafe - 10:15 a.m.
Ultimate Hair Cut Seminar - Vista Spa & Salon - 10:30 a.m.
Detox for Health & Weight Loss - Outlook Cafe - 11:00 a.m.
Inch Loss Made Easy With Ionithermi - Outlook Cafe - 1:00 p.m.
Seminar: Improving Your Posture-Walk in Comfort - Outlook Cafe - 2:00 p.m.
Acupuncture Seminar: Arthritis and Back Pain Solutions - Outlook Cafe - 3:15 p.m.
Pilates - Vista Spa & Salon - 4:30 p.m.
Complimentary Footprint Analysis - Vista Spa Fitness Center - 5:00 p.m.

TASTING CLASSES

Stem to Stern Wine Tasting (21+) - Cadillac Lounge - 12:00 p.m.
Martini Tasting (21+) - Cadillac Lounge - 2:00 p.m.
Beer Tasting (21+) - Diversions - 2:00 p.m.
Whiskey Tasting (21+) - Outlook Cafe - 10:30 p.m.
 Please make reservations for tastings at Guest Services for a nominal fee.
 Tasting Seminars are only for Guests 21 and Older.

CLUB 18*21 - LUNCH

Parrot Cay, Deck 3, Aft - 12:15 p.m.
 Get to know your fellow 18*21 guests over a spot of lunch.

CLUB 18*21 - SOCIAL

Diversions, Deck 3, Forward - 10:00 p.m.
 Come and socialize with your fellow cruisers.

DISNEY'S ART OF ENTERTAINING: THE APPETIZER

Studio Sea, Deck 4, Midship - 9:45 a.m.
 Our chef cooks up the perfect start to any dinner party in this delicious demonstration. Recipes and tastings included!

ART OF THE THEME SHOW TOUR

Meet at Palo, Deck 10, Aft - 4:00 p.m.
 Join us on a guided ship tour and discover the key ingredients that make the Disney Wonder.



FUN FOR ALL AGES HIGHLIGHTS



WAKE UP WITH DISNEY JUNIOR

Studio Sea, Deck 4, Midship - 8:30 a.m.
 What happens when you experience unlimited fun with your favorite Disney Junior shows? You get an exciting dance party designed especially for preschoolers ages seven and under.



JACK-JACK'S INCREDIBLE DIAPER DASH

Lobby Atrium, Deck 3, Midship - 9:00 a.m.
 Calling all baby Cruisers! It's time to take to the mat to see who's the fastest crawler of the seven seas! Register your baby 15 minutes prior to the big race.



DIAMOND JACKPOT BINGO

Wavebands, Deck 3, Forward - 10:45 a.m.
 Join us for 4 cash prize games and your chance to win a Diamond Pendant! Everyone attending will also receive a voucher to collect a free Diamonds International charm bracelet! Pre Sales start 15 minutes prior to game.

ANIMATION - MICKEY MOUSE

Animator's Palate, Deck 4, Aft - 11:45 a.m.
 Your Cruise Staff teach you how to draw one of your favorite Disney friends - Mickey Mouse.



DISNEY VACATION CLUB GROUP PREVIEW

Studio Sea, Deck 4, Midship - 12:30 p.m.
 Want to learn more about taking magical vacations year after year? Please see a Disney Vacation Club representative on Deck 4, Midship, or call 7-2805 from your stateroom phone for more information about our interactive group presentation.

GENERATION GAME

Wavebands, Deck 3, Forward - 12:30 p.m.
 Join your Cruise Staff team for our kids vs. adults game show featuring a series of challenges and tasks. Who will be the champion in our battle of the generations?



MICKEY 200

Wavebands, Deck 3, Forward - 1:45 p.m.
 Don't eat your vegetables... race them in this wild and wacky charge to the finish line. May the best veggie win! (Limited Availability)

HUMPBACKS, GRAY & KILLER WHALES: WHAT YOU DON'T SEE

Walt Disney Theatre, Deck 4, Forward - 2:00 p.m.
 Join Doug Jones for a look at the types of mammals that are native to Alaska. He will share the habits of whales, help you to understand their life in the ocean, and share a few personal stories.

DISNEY TUNES TRIVIA

Promenade Lounge, Deck 3, Aft - 3:00 p.m.
 Determine just how well you know your Disney Tunes with your Cruise Staff.



VISTA SPA JACKPOT BINGO

Wavebands, Deck 3, Forward - 4:00 p.m.
 Four CASH prizes to be won! Plus great spa prizes that will pamper you, including a mini facial and massages all courtesy of the Vista Spa and Salon. Serenity now! Pre Sales start 15 minutes prior to game.

PIN TRADING STATION

Mickey's Mates, Deck 4, Midship - 7:15 p.m.
 A variety of limited-edition pins exclusively designed and created for Disney Cruise Line.

GAME SHOW: THE FEUD

Studio Sea, Deck 4, Midship - 7:30 p.m.
 "Survey Says" you'll have a fantastic time with our version of a classic game.

THE GOLDEN MICKEYS AFTER PARTY

Studio Sea, Deck 4, Midship - 9:30 p.m.
 Join your Cruise Staff team for the awards celebration after party featuring great dance music for the entire family.

FAMILY SUPERSTAR KARAOKE

Studio Sea, Deck 4, Midship - 10:15 p.m.
 Join your Cruise Staff in Studio Sea tonight and sing along to your favorite song - fun for everyone.

YOUTH ACTIVITIES HIGHLIGHTS

DINE & PLAY

A convenience for families dining at 8:15 p.m., our Youth Activities Counselors will be available at 9:15 p.m. at the entrance of Triton's, Parrot Cay and Animator's Palate dining rooms to bring registered children to join the fun in the Oceaneer Club and Oceaneer Lab.



Deck 5, Aft (7-18500) 9:00 a.m. - 11:00 p.m.

Infants and Toddlers can enjoy toys and activities at Flounder's Reef Nursery. Reservations are first come, first served so please stop by!



Deck 5, Midship (7-1440) 9:00 a.m. - 12:00 mid
(3 - 12 years old)

MAGIC SHOW

10:45 a.m.

The Magnificent Magician will demonstrate to you some of the best known magic tricks on the sea.

PLUTO'S PAJAMA PARTY

9:45 p.m.

Bring the little ones in their pajamas but there will be anything but sleep when Pluto and friends host the ultimate slumber party!



Deck 5, Midship (7-1445) 9:00 a.m. - 12:00 mid
(3 - 12 years old)

STITCH'S GREAT ADVENTURE

2:00 p.m.

Stitch needs your help in trying to capture ten of his lost experiments before they cause all kinds of problems on the ship!

4TH PIGS PASTA PALACE

7:30 p.m.

Build your very own house made out of pasta and play-doh for Franco, the Fourth Little Pig, to see if it will withstand nature's forces.



Deck 2, Midship (7-5810) 10:00 a.m. - 12:00 mid
(11 - 14 years old)

FLOAT FUN TRIVIA

1:00 p.m.

How well do you know the ship? With a Coke Float as your reward, everyone is in the trivia spirit.

VILLAINOUS VENTURES

2:00 p.m.

The Disney villains have cast a spell on the ship and only you can break it. Teams must work together as they hunt for clues around the ship.



Deck 11, Midship (7-1456) 10:00 a.m. - 2:00 a.m.
(14 - 17 years old)

DIVE INTO DJ'ING

3:00 p.m.

Hop on the turn tables and learn to scratch with our Club DJ.

PIZZA PERFECTION

10:30 p.m.

Where do pizzas come from? Let's make some of our own as we answer questions and add ingredients in preparation to eat them!

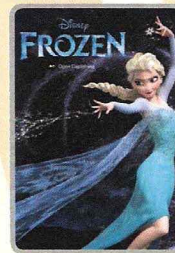
BUENA VISTA THEATRE

Deck 5, Aft

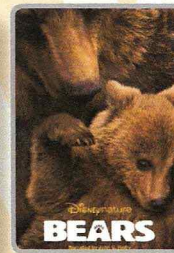
Today's Movies

OC Open Captioning

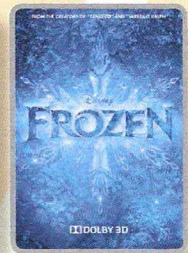
DOLBY.3D



8:30 a.m.
Duration:
1 hr 48 mins
Rating: PG

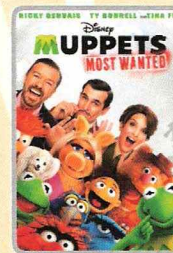


10:45 a.m.
Duration:
1 hr 25 mins
Rating: G



3:00 p.m.
Duration:
1 hr 48 mins
Rating: PG

DOLBY.3D



5:45 p.m. & 8:15 p.m.
Duration: 1 hr 52 mins
Rating: PG



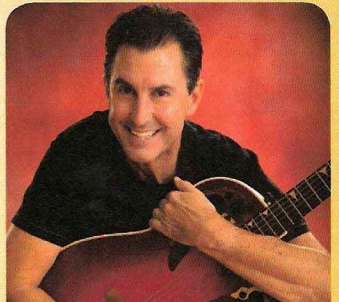
10:45 p.m.
Duration: 2 hrs 16 mins
Rating: PG-13

The Feud

FAMILY GAME SHOW

"Survey Says" you'll have a fantastic time with our version of a classic game.

*Studio Sea,
Deck 4, Midship,
7:30 p.m.*



ADULT VARIETY ACT

Featuring the Comedy & Music of John Charles as he entertains you in this adult exclusive show.

*Wavebands (18+),
Deck 3, Forward,
10:30 p.m.*

YOUTH ACTIVITIES OPEN HOUSE

Open House is an opportunity for all to come and participate in a variety of exciting activities and free time in the Oceaneer Club, Oceaneer Lab, Flounder's Reef Nursery, Vibe and Edge throughout the cruise. During these times secured programming will still be offered in the other venue for those looking to check their children into care.

Vibe: 10:00 a.m. - 12:00 p.m. **Disney's Oceaneer Club:** 9:00 a.m. - 10:30 a.m.
Vibe: 4:00 p.m. - 6:00 p.m.
Edge: 9:00 a.m. - 12:00 p.m.
Edge: 6:00 p.m. - 8:00 p.m.

MORE TO ENJOY WHILE ONBOARD



NEW IN 2015!

Chart a magical new course for northern Europe - explore Norwegian fjords - steeped in Viking History from steaming geysers to scenic mountain ranges. Visit the Onboard Sales Desk for more information.



DISNEY VACATION CLUB® GROUP PREVIEW

Want to learn more about taking magical vacations year after year? Please see a Disney Vacation Club representative on Deck 4, Midship, or call 7-2805 from your stateroom phone for more information about our interactive group presentation.



PORT AND SHOPPING INFORMATION

Not To Be Missed Alaska Shopping Events. The Alaska Port & Shopping Show, 1:30 p.m. - Buena Vista Theatre, Deck 5, Aft. Learn about the incredible shopping in Alaska. Everything will be covered, from Diamonds to T-shirts, Totem Poles to Salmon. FREE Alaskan Charm Bracelet & Raffle to win a Diamond Pendant! At 4:00 p.m. come to the Fine Watch Seminar in Promenade Lounge, Deck 3, Midship. Learn the difference between a \$10 watch & a \$10,000 watch!



VISTA SPA

Deck 9, Forward - Phone: 7-1465

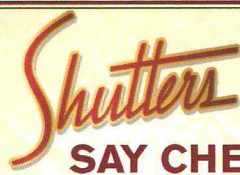
CLEOPATRA SPECIAL

Today only! Receive the below 50 minute Treatment for only \$159.
Hot Stone Back Massage, Skin Nourishing Body Wrap,
Foot Pressure Point Massage, Frangipani Scalp Massage

18% Gratuity is automatically added to all Spa services, specials and amenities.

2014 DISNEY CRUISE LINE MERCHANDISE

Step into Mickey's Mates today and commemorate your Disney cruise with a wide selection of 2014 Disney Cruise Line Merchandise.
Mickey's Mates,
Deck 4, Forward.



Formal portraits tonight in the Lobby Atrium, Deck 3, Midship.
Available 5:00 p.m. - 6:00 p.m., 7:15 p.m. - 8:15 p.m. and
9:30 p.m. - 10:30 p.m.

**Please note that photos are available for viewing on our interactive photo kiosks approximately five hours after being taken and are only available for purchase during this cruise.*

QUARTER MASTERS ARCADE

Demonstrate your cutting expertise at BARBERCUT and win an Ipod Nano or an Ipod Shuffle! Only at Quarter Masters Arcade, located on Deck 9, Midship, where the winners win.

EARLY FLIGHT DEPARTURES

Guests with flights departing prior to 12:00 p.m. are kindly asked to notify Guest Services located on Deck 3, Midship, no later than 12:00 noon on Saturday.

Connect@Sea

We are now offering a NEW and improved Internet service to stay connected on your cruise like no other in the industry! Internet packages range from \$0.25 per MB - \$89.00 (1000 MB package). For more information contact your Connect@Sea Expert or Guest Services onboard.

Disney CRUISE LINE.



From the historic gold-mining town of Skagway to the ice fields of Juneau's Mendenhall Glacier, you'll find adventures around every corner. Each port presents enticing opportunities to see historic mining and fishing towns, fascinating Native American culture, fjords, waterfalls, glaciers, majestic wildlife, like bears, elk and humpback whales and other natural wonders. Visit the knowledgeable and friendly Port Adventures team, located Deck 3, Midship, and we will assist in planning your Port Adventures for the entire cruise.

SHOPPING

ART GALLERY - THOMAS KINKADE PAINTINGS

Stop by the Art Gallery today to view our selection of Thomas Kinkade Limited Edition Disney paintings. While there, see if you can find some hidden characters in the artwork. Deck 4, Midship. Our Hostess is available between 7:00 p.m. and 9:00 p.m. for any hints!

2014 DISNEY CRUISE LINE MERCHANDISE

Step into Mickey's Mates today and commemorate your Disney cruise with a wide selection of 2014 Disney Cruise Line merchandise. From t-shirts to photo albums and more, you are sure to find a special souvenir for the whole family. Deck 4, Forward.

SHINOLA WATCHES

Available onboard at Treasure Ketch, Shinola watches are created using advanced technology with meticulous hand-assembly. Deck 4, Forward.

NOVELTY ANIMAL HEADWEAR

Keep your head warm with adorable animal novelty headwear. Stop by Mickey's Mates and pick out the animal hat that best suits your personality! Deck 4, Forward.

SOPHIA FIORI GUESS THE CARAT WEIGHT

Whoever guesses closest wins a Sophia Fiori fine jewelry piece! 9:30 a.m. - 7:30 p.m., Winners Announced tonight at 7:30 p.m. Must be present to win. Treasure Ketch, Deck 4, Forward.

VERA BRADLEY BAGS AND ACCESSORIES

With their distinctive and colorful fabrics and trims, view our collection of Vera Bradley bags and accessories including the new Vera Bradley tote bags designed especially for Disney Cruise Line® available at Treasure Ketch. Deck 4, Forward.

IMPORTANT INFORMATION

Security Notice

All Guests (including Children) who wish to disembark or embark the ship are required to present their Key to the World card at the gangway. A photo ID is also required for those Guests who are 18 years of age or older. Guests under the age of 18 are required to have a parent, guardian or other responsible adult sign an authorization form at the Guest Service Desk if they wish to go ashore unaccompanied or with any adult from another stateroom.

Sunscreen/Insect Repellent Advisory

Use sunscreen first and protect against mosquito borne illnesses by applying insect repellent on top of sunscreen when going ashore.

Cold and Flu Reminder

Please wash hands frequently and thoroughly, particularly before meals. Contact the Health Center by dialing 7-1923, should anyone in your party become ill.

Inclement Weather

For the safety of all Guests, outdoor events may be changed due to unforeseen weather conditions.

Corridor Quiet Hours

As a courtesy to all our Guests, please recognize quiet hallway hours from 10:00 p.m. til 8:00 a.m.

Environmental Message

With Disney's commitment to the Environment please refrain from throwing anything over the Ship's side. Thank you.

No Reserved Seats Policy

As a courtesy to all Guests we kindly advise that the saving of seats is not permitted in the Walt Disney Theatre, and the saving of the sun loungers is not permitted on Deck 9 and 10. Items left unattended will be returned to lost and found at Guest Services, Deck 3, Midship.

Smoking

For the comfort of our guests, the following areas are designated as smoking areas:

- Deck 10, forward, Starboard side
- Deck 10, forward, Starboard side at Quiet Cove
- Deck 4, aft, starboard side from 6:00 p.m. to 6:00 a.m. only (all of Deck 4 is non-smoking from 6:00 a.m. to 6:00 p.m.)

Smoking is prohibited inside all guest staterooms and on stateroom verandahs. Guest found smoking in their staterooms or on their verandahs will be charged a \$250 stateroom recovery fee. Electronic cigarettes may only be used in designated smoking areas.

Walt Disney Theatre

Theatrical performances may use artificial fog, strobe lights, pyrotechnics and other special effects. For the safety of our performers and the comfort of those around you, the use of any photography or video recording device or any electronic equipment is prohibited.

Verandah Safety

Please do not leave any combustible materials on your balcony when not present in your stateroom for safety reasons.

Morning	8:30	8:45	9:00	9:15	9:30	9:45	10:00	10:15	10:30	10:45	11:00	11:15	11:30	11:45	12:00	12:15	12:30	12:45	1:00	1:15	1:30			
FUNNEL VISION			Virtual Tours Funnel Vision		The Jungle Book (G) Funnel Vision								101 Dalmatians (G) Funnel Vision				Lady and the Tramp (G) Funnel Vision							
BUENA VISTA THEATRE	Frozen (PG) Open Captioning Duration: 1 Hour 48 Minutes										Disney Nature: Bears (G) Duration: 1 Hour 25 Minutes										Port & Shopping Talk Buena Vista Theatre			
CHARACTERS			Sofia Preludes				Jake Preludes				Sofia Preludes				Jake Preludes		Princess Gathering Lobby Atrium		Donald Preludes	Daisy Dk 4, Mid	Mickey Preludes	Minnie Dk 4, Mid		
FUN FOR ALL AGES	Studio Sea		Lobby Atrium		INTO THE WILD ALASKAN NATURALIST PRESENTATION Walt Disney Theatre				Bingo Pre Sales		Diamond Jackpot BINGO Wavebands				Animation Mickey Mouse Animator's Palate		Generation Game Wavebands		Family Crafts Animator's Palate		Port & Shopping Talk Buena Vista Theatre			
	Toddler Time for Families Flounder's Reef		Disney Vacation Club Members Celebration Wavebands				Shuffleboard Tournament Deck 4, Port Side				Pictionary Challenge Promenade Lounge				Cruisin' for Trivia Promenade Lounge		Disney Vacation Club Group Preview Studio Sea							
ADULTS	Friends of Bill W. Cadillac Lounge				Walk A Mile Deck 4, Forward Elevators		Disney's Art of Entertaining: The Appetizer Studio Sea		Ultimate Hair Cut Seminar Vista Spa & Salon				50's and 60's Music Trivia Diversions		Club 18*21 - Lunch Parrot Cay				Movie Quotes Trivia Diversions					
	Tour De Cycle Vista Spa Fitness Center										Detox for Health & Weight Loss Outlook Cafe				Stem to Stem Wine Tasting (21+) Cadillac Lounge		Singles' Lunch Parrot Cay							
VIBE 14-17 YEARS OLD							Youth Activities Open House						Fifa Challenge						Girls Chill					
EDGE 11-14 YEARS OLD							Youth Activities Open House						Explore EDGE								Float Fun Trivia			
OCEANEER LAB 3-12 YEARS OLD					Animation Antics						Flubber						Whales & Other Marine Mammals - Helen Dempsey						Lunch	
OCEANEER CLUB 3-12 YEARS OLD					Youth Activities Open House						Magic Show						Brother Bear						Lunch	
					Nemo's Coral Reef Adventure																			
Afternoon	1:45	2:00	2:15	2:30	2:45	3:00	3:15	3:30	3:45	4:00	4:15	4:30	4:45	5:00	5:15	5:30	5:45	6:00	6:15	6:30	6:45			
FUNNEL VISION	Tarzan (G) Funnel Vision								Toy Story (G) Funnel Vision						Virtual Tours Funnel Vision				Disney Nature: Earth (G) Funnel Vision					
BUENA VISTA THEATRE						Frozen (PG) DOLBY 3D Duration: 1 Hour 48 Minutes										Muppets Most Wanted (PG) Duration: 1 Hour 52 Minutes								
CHARACTERS						Donald Lobby Atrium (P)				Daisy Lobby Atrium (P)						Chip & Dale Dk 4, Mid		Mickey & Minnie Dk 4, Mid						
						Pluto Lobby Atrium (S)				Chip & Dale Lobby Atrium (S)														
FUN FOR ALL AGES	Mickey 200 Wavebands				Disney Tunes Trivia Promenade Lounge				Bingo Pre Sales		Vista Spa Jackpot BINGO Wavebands				Welcome Reception Lobby Atrium		Live Music with Roberto & Daria Promenade Lounge		Red Carpet Arrivals		THE GOLDEN MICKEYS Walt Disney Theatre			
	HUMPBACKS, GRAY & KILLER WHALES ALASKAN NATURALIST PRESENTATION Walt Disney Theatre														Live Music with Droom Lobby Atrium									
	Crafts: Origami Creations Animator's Palate		Who Am I? Promenade Lounge						Theme Park Trivia Diversions		Basketball Free Throw Wide World Of Sports				Live Music with Droom Lobby Atrium									
ADULTS	Posture Analysis Outlook Cafe				Adult Animation Class Animator's Palate						Art of The Theme Show Tour Meet at Palo				TV Tunes Trivia Diversions		Live Guitar with Dave Sharp Cadillac Lounge							
	Beer Tasting (21+) Diversions				Sports Trivia Diversions						Fine Watch Seminar Promenade Lounge				Footprint Analysis Vista Spa Fitness Center									
VIBE 14-17 YEARS OLD	Icy Wonders - Glaciers - Helen Dempsey				Dive into DJ'ing						Youth Activities Open House						Hoop It Up!		Wii Challenge					
EDGE 11-14 YEARS OLD	Villainous Ventures				Picture This						Brains and Brawns				Alaska & the Ring of Fire - Helen Dempsey				Youth Activities Open House					
OCEANEER LAB 3-12 YEARS OLD			Stitch's Great Adventure				Ratatouille Cooking School						Dance Party				Magic Show				Dinner			
OCEANEER CLUB 3-12 YEARS OLD			Story Time with Belle						Nemo's Coral Reef Adventure						Elephant Soccer				Dinner in Disney's Oceaneer Lab					
Evening	7:00	7:15	7:30	7:45	8:00	8:15	8:30	8:45	9:00	9:15	9:30	9:45	10:00	10:15	10:30	10:45	11:00	11:15	11:30	11:45	12:00			
FUNNEL VISION						Disney Nature: Oceans (G) Funnel Vision										WALL-E (G) Funnel Vision								
BUENA VISTA THEATRE						Muppets Most Wanted (PG) Duration: 1 Hour 52 Minutes										Captain America: The Winter Soldier (PG-13) DOLBY 3D Duration: 2 Hours 16 Minutes								
CHARACTERS	Goofy Dk 4, Mid				Mickey & Minnie Dk 4, Mid						Goofy Lobby Atrium (P)				Mickey & Minnie Lobby Atrium (P)									
FUN FOR ALL AGES	Pin Trading Station Mickey's Mates		Welcome Reception Lobby Atrium		Variety: Thomas John Wavebands		Game Show: The Feud Studio Sea		Red Carpet Arrivals		THE GOLDEN MICKEYS Walt Disney Theatre		The Golden Mickeys After Party Studio Sea		Family Superstar Karaoke Studio Sea									
													Live Music with Roberto & Daria Promenade Lounge		Live Music with Roberto & Daria Promenade Lounge									
ADULTS			Live Piano with Laurence J Blackler Cadillac Lounge				Live Guitar with Dave Sharp Cadillac Lounge				DJ Dance Party Wavebands		LIVE Piano Cadillac Lounge		Club 18*21 - Social Diversions		Adult Variety: John Charles Wavebands		Cruise Staff DJ Wavebands					
VIBE 14-17 YEARS OLD	Wii Challenge		Smoothie Time						Chill Time				Gender Wars		Pizza Perfection									
EDGE 11-14 YEARS OLD	Youth Activities Open House		Craft Corner						Disney Scene It				Gender Wars		Pizza Perfection									
OCEANEER LAB 3-12 YEARS OLD			4th Pigs Pasta Palace						Marshmallow Olympics				Gasses in Action				Animation Cells							
OCEANEER CLUB 3-12 YEARS OLD			Little Einstein's Adventure						Hidden Mickey Challenge				Pluto's Pajama Party				Glow Jam							

Symbol for activities that will be repeated during the cruise



FOLD

Fold along the dotted lines and take me with you so you don't miss any of the fun!

FOLD

IN THE SPOTLIGHT SERIES
SOLVE IT SERIES

JUMP UP! SERIES
CREATE & SERIES
OPEN HOUSE

CLUBHOUSE SERIES
STORYBOOK SERIES

TUESDAY, JUNE 3, 2014 - DAY AT SEA

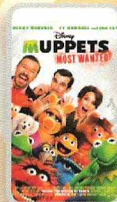
BUENA VISTA THEATRE

Deck 5, Aft

Open Captioning

DOLBY 3D

DOLBY 3D



8:30 a.m. Duration: 1 hr 48 mins Rating: PG	10:45 a.m. Duration: 1 hr 25 mins Rating: G	3:00 p.m. Duration: 1 hr 48 mins Rating: PG	5:45 p.m. & 8:15 p.m. Duration: 1 hr 52 mins Rating: PG	10:45 p.m. Duration: 2 hrs 16 mins Rating: PG-13
--	--	--	---	---

Character Appearances

PRINCESS SOFIA

Preludes - 9:00 a.m. & 10:00 a.m.

JAKE - THE NEVERLAND PIRATE

Preludes - 9:30 a.m. & 10:30 a.m.

PRINCESS GATHERING

Lobby Atrium - 12:00 p.m.

DONALD DUCK

Preludes - 12:15 p.m.
Lobby Atrium (P) - 3:00 p.m.

DAISY DUCK

Deck 4, Midship - 12:30 p.m.
Lobby Atrium (P) - 3:30 p.m.

MICKEY MOUSE

Preludes - 12:45 p.m.

MINNIE MOUSE

Deck 4, Midship
1:00 p.m.

PLUTO

Lobby Atrium (S)
3:00 p.m.

CHIP & DALE

Lobby Atrium (S) - 3:30 p.m.
Deck 4, Midship - 5:15 p.m.

MICKEY & MINNIE

Deck 4, Midship - 5:45 p.m. & 7:45 p.m.
Lobby Atrium (P) - 10:15 p.m.

GOOFY

Deck 4, Midship - 7:15 p.m.
Lobby Atrium (P) - 9:45 p.m.



(P) - Port Side (S) - Starboard Side

Don't forget your Camera to capture those Magical Moments!
Check here each day for all of today's Character Appearances or refer to the Character Board in the Lobby Atrium.

Meet-and-Greets will be advertised for the length of time the line will be open. To avoid disappointment, please meet at start time of appearances.

YOUTH ACTIVITIES THEMED EXPERIENCES

CLUBHOUSE SERIES

focuses on movement and features content which appeals to younger children.

STORYBOOK SERIES is designed with a strong connection to the Disney classic stories.

JUMP UP! SERIES

includes large group games & movement-oriented activities.

CREATE & INVENT SERIES will have a tactile focus allowing children to create and admire their work.

IN THE SPOTLIGHT SERIES

focuses on children's stage presence with lots of activities and enthusiasm.

SOLVE IT! SERIES are less active, but will challenge children with problem/solutions-based activities.

YOUTH ACTIVITIES OPEN HOUSE

Activities for families, adults and children of all ages to enjoy together.

SHIP DIRECTORY

YOUTH ACTIVITIES

DISNEY'S OCEANEER CLUB	DECK 5, MID	9:00 AM - 12:00 MID
DISNEY'S OCEANEER LAB	DECK 5, MID	9:00 AM - 12:00 MID
EDGE	DECK 2, MID	10:00 AM - 12:00 MID
VIBE	DECK 11, MID	10:00 AM - 2:00 AM
FLOUNDER'S REEF NURSERY	DECK 5, AFT	9:00 AM - 11:00 PM

POOLS

Children under 12 years of age must have adult supervision in all pools.

GOOFY'S POOL	DECK 9, MID	10:00 AM - 8:00 PM
MICKEY'S POOL	DECK 9, AFT	10:00 AM - 8:00 PM
MICKEY'S SLIDE	DECK 9, AFT	10:00 AM - 5:00 PM
MICKEY'S SPLASH ZONE	DECK 9, AFT	10:00 AM - 8:00 PM
QUIET COVE POOL (18+)	DECK 9, FWD	10:00 AM - 8:00 PM

RECREATION

PORT ADVENTURES DESK	DECK 3, MID	9:00 AM - 1:00 PM 2:00 PM - 5:30 PM
VISTA FITNESS CENTER (18+)	DECK 9, FWD	6:00 AM - 10:00 PM
WIDE WORLD OF SPORTS DECK	DECK 10, FWD	24 HOURS

GENERAL INFORMATION

BUENA VISTA THEATRE	DECK 5, AFT	SHOWTIMES
DISNEY VACATION CLUB DESK	DECK 4, MID	9:00 AM - 11:00 AM 5:00 PM - 10:00 PM
FUNNEL VISION	DECK 9, MID	SHOWTIMES
GUEST SERVICES	DECK 3, MID	24 HOURS
MEDICAL HEALTH CENTER	DECK 1, FWD	9:30 AM - 11:00 AM 4:30 PM - 7:00 PM
ONBOARD SALES DESK	DECK 4, MID	9:00 AM - 11:30 AM 3:30 PM - 6:00 PM 7:30 PM - 8:30 PM
PORT & SHOPPING DESK	DECK 3, MID	
PRELUDES	DECK 4, FWD	5:45 PM - 6:15 PM 8:00 PM - 8:30 PM
QUARTER MASTERS (ARCADE)	DECK 9, MID	24 HOURS
SHUTTERS PHOTO GALLERY	DECK 4, AFT	10:00 AM - 11:00 PM
VISTA SPA AND SALON	DECK 9, FWD	8:00 AM - 10:00 PM
WALT DISNEY THEATRE	DECK 4, FWD	SHOWTIMES

SHOPPING

ART GALLERY	DECK 4, MID	1:00 PM - 4:00 PM 7:00 PM - 9:00 PM
MICKEY'S MATES	DECK 4, FWD	9:00 AM - 10:30 PM
RADAR TRAP (DUTY FREE)	DECK 3, FWD	6:00 PM - 10:30 PM
TREASURE KETCH	DECK 4, FWD	9:00 AM - 10:30 PM

IMPORTANT NUMBERS

Fire/Security: 7-3001
Medical EMERGENCY: 7-3000
Health Center: 7-1923

DINNER MENU

Animator's Palate: Golden Mickeys
Parrot Cay: Golden Mickeys
Triton's: Golden Mickeys
Dining Times: 5:45 p.m. & 8:15 p.m.

DRINK OF THE DAY

Ocean Pearl (Alcoholic)
Passion Creme Freeze (Non-Alcoholic)

WEATHER FORECAST

Today: Partly Sunny
High: 60°F/16°C
Tomorrow: Partly Sunny
High: 54°F/12°C

DINING & LOUNGES

BREAKFAST

BEACH BLANKET BUFFET	DECK 9, AFT	7:15 AM - 10:30 AM
GOOFY'S GALLEY	DECK 9, AFT	6:30 AM - 9:00 AM
TRITON'S (À-LA CARTE)	DECK 3, MID	8:00 AM - 9:30 AM

LUNCH

BEACH BLANKET BUFFET	DECK 9, AFT	12:00 PM - 2:00 PM
GOOFY'S GALLEY	DECK 9, AFT	10:30 AM - 7:00 PM
PARROT CAY	DECK 3, AFT	12:15 PM - 1:30 PM
PINOCCHIO'S PIZZERIA	DECK 9, MID	10:30 AM - 6:00 PM
PLUTO'S DOG HOUSE	DECK 9, AFT	10:30 AM - 6:00 PM
TRITON'S	DECK 3, MID	12:00 PM - 1:30 PM

DINNER

ANIMATOR'S PALATE	DECK 4, AFT	5:45 PM & 8:15 PM
PARROT CAY	DECK 3, AFT	5:45 PM & 8:15 PM
TRITON'S	DECK 3, MID	5:45 PM & 8:15 PM
PALO* (18+)	DECK 10, AFT	6:00 PM - 9:00 PM
BEACH BLANKET (À-LA CARTE)	DECK 9, AFT	6:30 PM - 8:30 PM
PLUTO'S DOG HOUSE	DECK 9, AFT	6:00 PM - 9:30 PM

LATE NIGHT SNACKS

DIVERSIONS	DECK 3, FWD	11:00 PM - 12:00 MID
ICE CREAM AT GOOFY'S GALLEY	DECK 9, AFT	7:00 PM - 12:00 MID
PINOCCHIO'S PIZZERIA	DECK 9, MID	9:30 PM - 12:00 MID
PROMENADE LOUNGE	DECK 3, AFT	11:00 PM - 12:00 MID

ADDED FEATURES

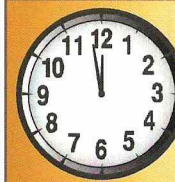
BEVERAGE STATION	DECK 9, AFT, PORT SIDE	24 HOURS
ROOM SERVICE	DIAL 6801 OR 6802	24 HOURS

ENTERTAINMENT - LOUNGES - BARS

Adults must be 21 and older to consume alcoholic beverages.

CADILLAC LOUNGE (18+)	DECK 3, FWD	5:30 PM - 12:00 MID
COVE CAFE (18+)	DECK 9, MID	6:30 AM - 12:00 MID
DIVERSIONS (18+ AFTER 9:00 PM)	DECK 3, FWD	11:00 AM - 12:00 MID
INTERNET CAFE	DECK 3, AFT	24 HOURS
OUTLOOK CAFE (18+)	DECK 10, MID	6:30 AM - 12:00 MID
PINOCCHIO'S PIZZERIA	DECK 9, MID	9:30 AM - 12:00 MID
PLUTO'S DOG HOUSE	DECK 9, AFT	10:30 AM - 6:00 PM
PRELUDES	DECK 4, FWD	5:45 PM - 6:15 PM 8:00 PM - 8:30 PM
PROMENADE LOUNGE (FAMILY)	DECK 3, AFT	8:00 AM - 12:00 MID
SIGNALS (18+)	DECK 9, FWD	9:30 AM - 9:00 PM
STUDIO SEA	DECK 4, MID	SHOWTIMES
WAVEBANDS (18+)	DECK 3, FWD	7:30 PM - 2:00 AM

Public Health Advisory: Consuming raw or under-cooked meats, poultry, seafood, shellfish, or eggs may increase your risk for food borne illness, especially if you have certain medical condition



TIME ZONE CHANGE

Remember to turn your clocks
BACK 1 HOUR upon retiring on
TUESDAY evening, or first thing
WEDNESDAY morning.