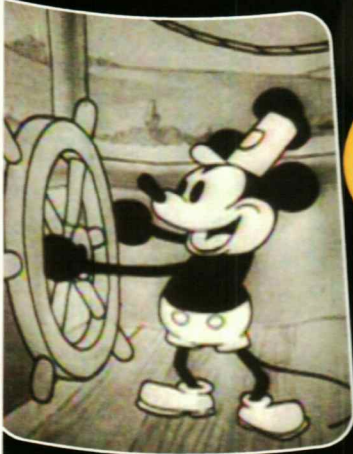


# PERSONAL NAVIGATOR WALT DISNEY

TUESDAY, JUNE 3, 2014

Sunrise: 5:40 a.m. Sunset: 8:58 p.m.  
 Evening Attire: Cruise Casual  
 All Ashore: 7:15 a.m.  
 All Aboard: 7:30 p.m.  
 Today: Partly Sunny High: 72°F/22°C  
 Tomorrow: Sunny High: 72°F/22°C

LA SPEZIA, ITALY




## WALT DISNEY

The Dream Goes On




WALT DISNEY THEATRE

Deck 4, Forward

7:00 p.m. & 8:45 p.m. 

As a courtesy to all Guests, we kindly advise that the saving of seats is **not** permitted in the Walt Disney Theatre.

 Assistance available at the entrance to the Walt Disney Theatre 30 minutes prior to show time.

## Welcome to La Spezia.

La Spezia is located in northern Italy in a province of the Liguria region. La Spezia was originally inhabited in Roman times, but little is known of the history before 1276, when it was sold to Genoa by the Fieschi family.

In 1857, La Spezia became a naval headquarter after the transfer of the military fleet from Genoa in 1857. The area was severely damaged by World War II; however, the city has rebuilt itself and the mix of ancient and modern architectural styles can be seen throughout the city today.

Pisa was originally an Etruscan settlement in the 5th century BC. In 179 BC the town of Pisa became a Roman colony and was developed to be an important naval base. In the 11th century, Pisa was further developed into one of the most powerful Italian Maritime Republics. During the Middle Ages, the buildings that made Pisa famous were built such as the Duomo, the cathedral's bell tower and the well known Leaning Tower.

Florence was originally founded in 59 BC by Julius Caesar. Florence gradually assumed leadership and became a free republic in the 12th century. Florence's increase in wealth and power coincided with becoming one of the most cultural cities of the world. In the 15th century, Florence was ruled by the two most able members of the Medici family: Cosimo the Elder and Lorenzo the Magnificent. The Medici family left the entire family collection to the city where some of the most famous art collections can be seen today.



## Disney CRUISE LINE. PORT ADVENTURES

Please check your tickets for meeting times and locations. Visit the Port Adventure's Desk, Deck 3, Midship for any questions.

### DINNER MENU

Animator's Palate: Show Dinner  
 Carioca's: South American Dinner  
 Lumière's: French Dinner

### DRINK OF THE DAY

Melon Margarita (Alcoholic)  
 Mango Crush (Non Alcoholic)

### IMPORTANT NUMBERS

Fire/Security: 7-3001  
 Medical Emergency: 7-3000  
 Health Center: 7-1923

# ADULT ACTIVITY HIGHLIGHTS



## SENSES SPA FITNESS CLASSES & SEMINARS

- Abs Attack* - Senses Spa Fitness Center - 8:00 a.m.
- Group Cycling* - Senses Spa Fitness Center - 9:00 a.m.
- Stretch & Relax* - Senses Spa Fitness Center - 10:00 a.m.
- Ionthermie Seminar* - Senses Spa Fitness Center - 11:30 a.m.
- Secrets to a Flutter Stomach* - Senses Spa & Salon - 2:30 p.m.
- Acupuncture Seminar: Arthritis Solutions* - Keys - 3:00 p.m.
- Good Feet: Relieving Back Pain* - Senses Spa & Salon - 4:00 p.m.
- Pilates* - Senses Spa Fitness Center - 5:00 p.m.

## CLUB 18\*21 - GAME CHALLENGE

*O'Gills Pub, Deck 3, Forward - 5:15 p.m.*

Join us and play some of your favorite board games.

## CLUB 18\*21 - MIXER

*O'Gills Pub, Deck 3, Forward - 10:15 p.m.*

Come to join fellow cruisers your own age at our exclusive Club 18\*21 event.

## SINGLES' MINGLE

*Cove Cafe, Deck 9, Forward - 4:45 p.m.*

Single, single parent or just traveling alone? Join your Cruise Staff for an informal gathering.

## 80'S & 90'S MUSIC TRIVIA

*O'Gills Pub, Deck 3, Forward - 7:45 p.m.*

Step back to the 80's and 90's and test your musical knowledge of some of the greats in this fun music trivia.

## LIVE PIANO WITH AILEEN DE LA CRUZ

*Keys, Deck 3, Forward - 7:45 p.m., 9:45 p.m., & 11:00 p.m.*

Join Aileen de la Cruz as she plays live for your listening pleasure.

## DISNEY'S ONCE UPON A SONG

*Walt Disney Theatre, Deck 4, Forward - 10:30 p.m.*

A selection of Disney music from across the years featuring the vocal talents of members of the Walt Disney Theatre Cast.

# FUN FOR ALL AGES HIGHLIGHTS

## DISNEY TRIVIA

*Promenade Lounge, Deck 3, Aft - 1:45 p.m.*

Navigate your way through another round of questions to test how much you really know about Disney.

## YOUTH ACTIVITIES OPEN HOUSE: STORY TIME WITH BELLE

*Disney's Oceaneer Club, Deck 5, Aft - 4:15 p.m.*

Come and listen to one of your favorite Disney stories.

## YOUTH ACTIVITIES OPEN HOUSE: ONCE UPON A TIME!

*Disney's Oceaneer Club, Deck 5, Aft - 5:00 p.m.*

Join Bartleby the Bookmaker for a magical, musical story time featuring a Disney Princess!

## YOUTH ACTIVITIES OPEN HOUSE: BECOME IRON MAN!

*Disney's Oceaneer Club, Deck 5, Aft - 5:45 p.m.*

Do you want to be Iron Man? Marvel's Avengers Academy invites you to virtually suit up in Iron Man's armor for an exciting interactive training gauntlet.



## WHO WANTS TO BE A MOUSEKETEER?

*D Lounge, Deck 4, Midship - 7:45 p.m. & 10:00 p.m.*

Your chance to get in to the "hot seat" and win limited edition prizes. Or, play along as part of our live studio audience.



## MEGA RAFFLE JACKPOT BINGO

*Fathoms, Deck 3, Forward - 8:00 p.m.*

Four cash prizes and fun, Disney Cruise Line raffle prizes are up for grabs! Pre Sales start 15 minutes prior to game.



## D TUNES FAM JAM

*D Lounge, Deck 4, Midship - 10:45 p.m.*

Tune in and rock with us at this family dance party! Spread the word, there will be cool music, new dances, contests and a chance to win great prizes.



# YOUTH ACTIVITIES HIGHLIGHTS

## DINE & PLAY

As a convenience for families dining at 8:45 p.m., our Youth Activities Counselors will be available at 9:45 p.m. at the entrance of Lumiere's and Carioca's and 10:00 p.m. at Animator's Palate to bring registered children to join the fun in Disney's Oceaneer Club and Disney's Oceaneer Lab.



**Deck 5, Aft (7-5864) 6:30 a.m. - 11:00 p.m.**

Infants and Toddlers can enjoy toys and activities at It's a Small World Nursery. Reservations are first come, first served so please stop by!



**Deck 5, Midship (7-1440) 7:00 a.m. - 11:00 p.m.**  
(3-12 years old)

### BECOME IRON MAN!

10:45 a.m. & 10:15 p.m.

Do you want to be Iron Man? Marvel's Avengers Academy invites you to virtually suit up in Iron Man's armor for an exciting interactive training gauntlet.

### TOY STORY BOOT CAMP

2:00 p.m.

Join Corporal Green in our own version of boot camp as we learn how to have fun - The Toy Story way!



**Deck 5, Midship (7-1445) 11:00 a.m. - 12:00 mid**  
(3-12 years old)

### MARSHMALLOW OLYMPICS

2:00 p.m.

Learn all about this white sugary treat and everything it can do! Build a tower, go flying and test your agility - all with the help of a marshmallow.

### SUPER SLOPPY SCIENCE

7:30 p.m.

Join Professor Make-O-Mess in some of the most extreme experiments you will ever see in the world of Super Sloppy Science!



**Deck 2, Midship (7-5816) 10:30 a.m. - 12:00 mid**  
(11-14 years old)

### THAT'S HILARIOUS

7:45 p.m.

Ever wanted to show off your comedy skills? Then be a part of the cast for the crazy improv show "That's Hilarious" and put on a live show for your friends.

### BOYS AND GIRLS CHILL

10:00 p.m.

Boys you will hang for competition, challenges, and fun. Girls you will chill with music, games, and fun.



**Deck 10, Midship (7-18517) 12:00 p.m. - 2:00 a.m.**  
(14-17 years old)

### SCAVENGER HUNT

2:00 p.m.

A little friendly competition exploring the ship; see if you can solve the clues and finish first.

### DODGEBALL

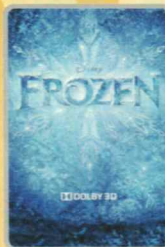
12:00 mid

Let's play fun sports games with your friends and dodge 'em!

# BUENA VISTA THEATRE

Deck 5, Aft  
Today's Movies

DOLBY 3D



8:30 a.m.  
Duration:  
1 hr 48 mins  
Rating: PG



10:45 a.m.  
Duration:  
2 hrs 4 mins  
Rating: PG



1:15 p.m.  
Duration:  
1 hr 37 mins  
Rating: PG

En Español

DOLBY 3D



3:15 p.m.  
Duration:  
1 hr 52 mins  
Rating: PG



5:30 p.m. & 8:15 p.m.  
Duration:  
2 hrs 16 mins  
Rating: PG-13

DOLBY 3D



11:00 p.m.  
Duration:  
1 hr 37 mins  
Rating: PG



## FAMILY DANCE PARTY

Tune IN and rock with us at this new family dance party! Spread the word, there will be cool music, new dances, contests and a chance to win great prizes!

*D Lounge,  
Deck 4, Midship,  
10:45 p.m.*



## MUSICAL REVIEW

A selection of Disney music from across the years featuring the vocal talents of members of the Walt Disney Theatre Cast.

*Walt Disney Theatre (18+),  
Deck 4, Forward,  
10:30 p.m.*

## YOUTH ACTIVITIES OPEN HOUSE

Open House is an opportunity for all to come and participate in a variety of exciting activities and free time in Disney's Oceaneer Club, Disney's Oceaneer Lab, Edge, Vibe, and It's a Small World Nursery throughout the cruise. During these times secured programming will still be offered in the other venues for those looking to check their children into care.

Vibe: 12:00 p.m. - 2:00 p.m.  
Edge: 10:30 a.m. - 11:30 a.m.

Disney's Oceaneer Lab: 11:00 a.m. - 1:00 p.m.  
Disney's Oceaneer Club: 4:00 p.m. - 7:00 p.m.

# MORE TO ENJOY WHILE ONBOARD



## BOOK ONBOARD AND SAVE!

Explore all the itineraries Disney Cruise Line offers - from the Caribbean and Bahamas to Alaska or Europe. Save when you book your next family adventure onboard! Visit the Onboard Sales Desk for more information.



## DISNEY VACATION CLUB

Visit the Disney Vacation Club information desk and ask us about show times where you will learn how to turn every vacation into the vacation of a lifetime.

## TRANSPORTATION INFORMATION

Should you wish to purchase transportation to the Barcelona airport, kindly proceed to Guest Services on Deck 3, Midship for further assistance. The deadline to purchase transportation from the Port to the Airport is Thursday at 5:00 p.m.

## EARLY FLIGHT INFORMATION

Should you have a flight out of the Barcelona airport prior to 10:30 a.m. on debarkation morning kindly bring your airline tickets to Guest Services on Deck 3, Midship for additional information and assistance.

## CURRENCY EXCHANGE

Euros will be available for exchange at Guests Services, Deck 3, Midship, 24 hrs a day. Not all currencies will be exchanged onboard, so please check with Guests Services for further information.

## CASH DECLARATION NOTICE

Guests going ashore in port with over 10,000 Euros (or cash equivalent in any other currency), are required to declare it to Customs upon arrival, or risk having it confiscated if stopped by local authorities.



Welcome to La Spezia! You can explore Piazza della Signoria, Santa Croce Square, "The Gates of Paradise" and the Ponte Vecchio bridge during a walking tour of Florence. Today, you can also visit the famous leaning tower of Pisa!

Stop by Port Adventures Desk on Deck 3, Midship where our friendly team will assist you with any last minute Port Adventures bookings.



**Deck 9, Forward - Phone : 7-1465**

**LADIES AND MEN'S CHOICE**

Share indulgences:


Back Massage, Aroma Facial, Foot massage, Frangipani Scalp Massage or relax in Rainforest for the rest of the day with special treats - \$125 per person.

**SOPHIA FIORI**  
**DIAMOND TRUNK SHOW**

Dazzling Diamonds,  
Tantalizing Tanzanite and  
many other Jewels.

**WHITE CAPS**

*Deck 4, Forward*



*Shutters*

**PHOTO  
PACKAGES!**

Shutters has a variety of great photo packages available to preserve your cruise memories. Visit Shutters Deck 4 Aft for more information.

## SHOPPING

### SPECIAL OFFER ONBOARD

Stop by the onboard merchandise shops, Deck 4, Forward, and receive a Disney Cruise Line® Backpack for \$17.95 with any merchandise purchase of \$35.00 or more. Offer not valid on previous purchases. No other discounts apply. While supplies last. Offer subject to change without notice.

### MEDITERRANEAN DISNEY CRUISE LINE® MERCHANDISE

Visit our onboard shops for our selection of 2014 Mediterranean Disney Cruise Line merchandise. From fashionable apparel, such as men's Nike polo shirts, to scrapbooks and photo albums, discover that special souvenir with which to commemorate your voyage. See all of the specially designed Mediterranean themed items and more by visiting Mickey's Mainsail and White Caps, Deck 4 Forward.

### PRECIOUS DISNEY PLUSHES

Cuddle up with some of your favorite Disney pals when you swing by Mickey's Mainsail and pick up one of your own soft Plush. From Stitch and Agent Perry to Minnie and Mickey, you'll be sure to find a new cuddly friend to take home. Deck 4, Forward.

### STYLISH JEWELRY AT WHITE CAPS

On a budget but still in need of some bling? Stop by White Caps today where you'll find a wide selection of stylish jewelry from popular brands such as Fossil and Alex and Ani. Deck 4, Forward.

### VERA BRADLEY BAGS AND ACCESSORIES

With their distinctive and colorful fabrics and trims, view our collection of Vera Bradley bags and accessories including the new Vera Bradley tote bags designed especially for Disney Cruise Line® available at White Caps. Deck 4, Forward.

### GUESS

A global brand that symbolizes a worldwide leader in the fashion industry. Large selection of watches available in White Caps, Deck 4, Forward.

Due to port regulations, when the ship is docked, the stores will remain closed.

## IMPORTANT INFORMATION

### Security Notice

All Guests (including Children) who wish to disembark or embark the ship are required to present their Key to the World card at the gangway. A photo ID is also required for those Guests who are 18 years of age or older. Guests under the age of 18 are required to have a parent, guardian or other responsible adult sign an authorization form at the Guest Service Desk if they wish to go ashore unaccompanied or with any adult from another stateroom.

**Sunscreen/Insect Repellent Advisory**  
Use sunscreen first and protect against mosquito borne illnesses by applying insect repellent on top of sunscreen when going ashore.

### Cold and Flu Reminder

Please wash hands frequently and thoroughly, particularly before meals. Contact the Health Center by dialing 7-1923, should anyone in your party become ill.

### Inclement Weather

For the safety of all Guests, outdoor events may be changed due to unforeseen weather conditions.

### Corridor Quiet Hours

As a courtesy to all our Guests, please recognize quiet hallway hours from 10:00 p.m. til 8:00 a.m.

### Environmental Message

With Disney's commitment to the Environment please refrain from throwing anything over the Ship's side. Thank you.

### No Reserved Seats Policy

As a courtesy to all Guests we kindly advise that the saving of seats is not permitted in the Walt Disney Theatre, and the saving of the sun loungers is not permitted on Deck 9 and 10. Items left unattended will be returned to lost and found at Guest Services, Deck 3, Midship.

### Smoking

For the comfort of our guests, the following areas are designated as smoking areas:

- Deck 10 Forward, Starboard Side
- Deck 9, Forward, Starboard Side at Quiet Cove
- Deck 4, Starboard Side from 6:00 p.m. to 6:00 a.m. only (all of Deck 4 is non-smoking from 6:00 a.m. to 6:00 p.m.)

Smoking is prohibited inside all guest staterooms and on stateroom verandahs. Guests found smoking in their staterooms or on their verandahs will be charged a \$250 stateroom recovery fee.

### Walt Disney Theatre

Theatrical performances may use artificial fog, strobe lights, pyrotechnics and other special effects. For the safety of our performers and the comfort of those around you, the use of any photography or video recording device or any electronic equipment is prohibited.

### Verandah Safety

Please do not leave any combustible materials on your balcony when not present in your stateroom for safety reasons.

Morning	8:30	8:45	9:00	9:15	9:30	9:45	10:00	10:15	10:30	10:45	11:00	11:15	11:30	11:45	12:00	12:15	12:30	12:45	1:00	1:15	1:30	
FUNNEL VISION	101 Dalmatians (G) Funnel Vision						The Lion King (G) Funnel Vision						Tarzan (G) Funnel Vision									
BUENA VISTA THEATRE	Frozen (PG) <b>DOLBY 3D</b> Duration: 1 Hour 48 Minutes						Million Dollar Arm (PG) Duration: 2 Hours 4 Minutes						Maleficent (PG) - en Español Duration: 1 Hour 37 Minutes									
CHARACTERS																						
FUN FOR ALL AGES													4th Pigs Pasta Palace Disney's Oceaneer Lab				Xbox Challenge Promenade Lounge					
ADULTS	Friends of Bill W. Animator's Palate						Seminar - Ionithermie Senses Spa Fitness Center															
	Group Cycling Senses Spa Fitness Center						Stretch & Relax Senses Spa Fitness Center															
VIBE 14-17 YEARS OLD	Youth Activities Open House																					
EDGE 11-14 YEARS OLD	Youth Activities Open House												Trivia Challenge				Animation Cells					
OCEANEER LAB 3-12 YEARS OLD	Youth Activities Open House																		Lunch			
OCEANEER CLUB 3-12 YEARS OLD	Mickey's Puzzle Playtime						Memory Wall				Become Iron Man!				Color Yourself Heroic				Lunch			

Afternoon	1:45	2:00	2:15	2:30	2:45	3:00	3:15	3:30	3:45	4:00	4:15	4:30	4:45	5:00	5:15	5:30	5:45	6:00	6:15	6:30	6:45	
FUNNEL VISION	The Princess and the Frog (G) Funnel Vision						Cars (G) Funnel Vision						Brother Bear (G) Funnel Vision									
BUENA VISTA THEATRE	Muppets Most Wanted (PG) Duration: 1 Hour 52 Minutes						Captain America: The Winter Soldier (PG-13) <b>DOLBY 3D</b> Duration: 2 Hours 16 Minutes															
CHARACTERS							Pluto Lobby Atrium (P)				Chip & Dale Lobby Atrium (P)											
							Goofy Lobby Atrium (P)				Donald Lobby Atrium (P)											
FUN FOR ALL AGES	Pictionary Challenge Promenade Lounge		Crafts: Button Making Promenade Lounge				Disney Trivia Promenade Lounge				Story Time with Belle Disney's Oceaneer Club		Toddler Time D Lounge		Live Music with Midtown Lobby Atrium				Live Music with Duo Azucar Promenade Lounge			
							Xbox® - The Feud Promenade Lounge				Once Upon a Time Disney's Oceaneer Club		Become Iron Man Disney's Oceaneer Club									
ADULTS	Secrets to a Flatter Stomach Senses Spa & Salon						Good Feet: Relieving Back Pain Senses Spa & Salon				Pilates Senses Spa Fitness Center		Live Music with LUCA O'Gills Pub									
VIBE 14-17 YEARS OLD	Scavenger Hunt						Soccer						ESPN Dream Team Draft Day									
EDGE 11-14 YEARS OLD	Craft Corner				Soccer				Brains and Brawns				Youth Activities Open House									
OCEANEER LAB 3-12 YEARS OLD	Marshmallow Olympics				Pinata Party				GAGA Ball				Dinner									
OCEANEER CLUB 3-12 YEARS OLD	Toy Story Boot Camp		Picture This		Youth Activities Open House				Story Time with Belle		Once Upon a Time		Become Iron Man									

Evening	7:00	7:15	7:30	7:45	8:00	8:15	8:30	8:45	9:00	9:15	9:30	9:45	10:00	10:15	10:30	10:45	11:00	11:15	11:30	11:45	12:00
FUNNEL VISION	Herbie: Fully Loaded (G) Funnel Vision						Oz The Great and Powerful (PG) Funnel Vision														
BUENA VISTA THEATRE	Captain America: The Winter Soldier (PG-13) <b>DOLBY 3D</b> Duration: 2 Hours 16 Minutes						Maleficent (PG) <b>DOLBY 3D</b> Duration: 1 Hour 37 Minutes														
CHARACTERS	Goofy Lobby Atrium (P)						Minnie Lobby Atrium (P)						Mickey Lobby Atrium (P)								
	Mickey Lobby Atrium (P)						Mickey Lobby Atrium (P)														
FUN FOR ALL AGES	Who Wants to be a Mouseketeer? D Lounge		Mega Raffle Jackpot Fathoms		Family Superstar Karaoke D Lounge		Mousketeer D Lounge				Live Music with Duo Azucar Promenade Lounge				Live Music with Duo Azucar Promenade Lounge						
ADULTS	80's & 90's Music Trivia O'Gills Pub						Motown with Aileen de la Cruz Keys				DJ Matt Fathoms		Live Piano Keys		Club 18*21 O'Gills Pub		Live Piano with Aileen de la Cruz Keys				
VIBE 14-17 YEARS OLD	Youth Activities Open House						Pump It Up						Smoothie Hour				Teen Choice				
EDGE 11-14 YEARS OLD	Open House		That's Hilarious				Xbox Challenge				Boys and Girls Chill										
OCEANEER LAB 3-12 YEARS OLD	Super Sloppy Science				Who Wants to be a Mouseketeer?				Lights, Camera, Improv!												
OCEANEER CLUB 3-12 YEARS OLD	Magic Show				Relay Games				Camp Out				Become Iron Man!								

Symbol for activities that will be repeated during the cruise



FOLD

Fold along the dotted lines and take me with you so you don't miss any of the fun!

FOLD

IN THE SPOTLIGHT SERIES

SOAK IT UP SERIES

JUMP UP! SERIES

CREATE & INVENT SERIES

OPEN HOUSE

CLUBHOUSE SERIES

STOPBOOK SERIES

TUESDAY, JUNE 3, 2014 - LA SPEZIA, ITALY

# BUENA VISTA THEATRE

Deck 5, Aft

En Español

DOLBY 3D DOLBY 3D



8:30 a.m.  
Duration:  
1 hr 48 mins  
Rating: PG



10:45 a.m.  
Duration:  
2 hrs 4 mins  
Rating: PG



1:15 p.m.  
Duration:  
1 hr 37 mins  
Rating: PG



3:15 p.m.  
Duration:  
1 hr 52 mins  
Rating: PG



5:30 p.m. &  
8:15 p.m.  
Duration:  
2 hrs 16 mins  
Rating: PG-13



11:00 p.m.  
Duration:  
1 hr 37 mins  
Rating: PG

## Character Appearances

**PLUTO**  
Lobby Atrium (P)  
4:00 p.m.

**GOOFY**  
Lobby Atrium (P)  
4:30 p.m. & 7:30 p.m.

**CHIP & DALE**  
Lobby Atrium (P)  
5:00 p.m.

**DONALD DUCK**  
Lobby Atrium (P)  
5:30 p.m.

**MICKEY MOUSE**  
Lobby Atrium (P)  
8:00 p.m. & 10:15 p.m.

**MINNIE MOUSE**  
Lobby Atrium (P)  
9:45 p.m.



(P) - Port Side, (S) - Starboard Side

Don't forget your Camera to capture those Magical Moments!  
Check here each day for Character appearances.  
For detailed Character appearance information, please see the Character Information Board in the Lobby Atrium.  
Meet-and-Greets will be advertised for the length of time the line will be open. To avoid disappointment, please meet at start time of appearances.

## YOUTH ACTIVITIES THEMED EXPERIENCES

**CLUBHOUSE SERIES**  
focuses on movement and features content which appeals to younger children.

**STORYBOOK SERIES**  
is designed with a strong connection to the Disney classic stories.

**JUMP UP! SERIES**  
includes large group games & movement-oriented activities.

**CREATE & INVENT SERIES**  
will have a tactile focus allowing children to create and admire their work.

**IN THE SPOTLIGHT SERIES**  
focuses on children's stage presence with lots of activities and enthusiasm.

**SOLVE IT! SERIES**  
are less active, but will challenge children with problem/solutions-based activities.

**YOUTH ACTIVITIES OPEN HOUSE**  
Activities for families, adults and children of all ages to enjoy together.

## SHIP DIRECTORY

### YOUTH ACTIVITIES

DISNEY'S OCEANEER CLUB	DECK 5, MID	7:00 AM - 11:00 PM
DISNEY'S OCEANEER LAB	DECK 5, MID	11:00 AM - 12:00 MID
EDGE	DECK 2, MID	10:30 AM - 12:00 PM
IT'S A SMALL WORLD NURSERY	DECK 5, AFT	6:30 AM - 11:00 PM
VIBE	DECK 10, MID	12:00 PM - 2:00 AM

### POOLS

\*Children under 12 years of age must have adult supervision in all pools.

AQUADUNK	DECK 10, MID	1:00 PM - 9:00 PM
AQUALAB	DECK 9, AFT	9:00 AM - 9:00 PM
GOOFY'S POOL	DECK 9, MID	10:00 AM - 6:00 PM 8:00 PM - 10:00 PM
NEPHEW'S SPLASH ZONE	DECK 9, AFT	9:00 AM - 6:00 PM
QUIET COVE POOL (18+)	DECK 9, FWD	6:00 AM - 12:00 MID
TWIST 'N' SPOUT	DECK 9, AFT	12:00 PM - 9:00 PM

### RECREATION

PORT ADVENTURES DESK	DECK 3, MID	6:30 AM - 9:00 AM 7:00 PM - 9:30 PM
SENSES FITNESS CENTER (18+)	DECK 9, FWD	6:30 AM - 10:00 PM
WIDE WORLD OF SPORTS DECK	DECK 10, FWD	24 HOURS

### GENERAL INFORMATION

BUENA VISTA THEATRE	DECK 5, AFT	SHOWTIMES
DISNEY VACATION CLUB DESK	DECK 4, MID	5:00 PM - 10:00 PM
ONBOARD SALES DESK	DECK 4, MID	8:30 AM - 9:30 AM 4:00 PM - 6:00 PM 7:00 PM - 10:00 PM
FUNNEL VISION	DECK 9, MID	SHOWTIMES
GUEST SERVICES	DECK 3, MID	24 HOURS
HAIR BRAIDING	DECK 9, MID	4:00 PM - 6:00 PM 4:00 PM - 10:00 PM 7:00 PM - 10:00 PM
MEDICAL HEALTH CENTER	DECK 1, FWD	9:30 AM - 11:00 AM 4:30 PM - 7:00 PM
PORT & SHOPPING DESK	DECK 3, MID	7:30 PM - 8:30 PM
PRELUDES	DECK 4, FWD	5:30 PM - 9:00 PM
QUARTER MASTERS (ARCADE)	DECK 9, MID	24 HOURS
SENSES SPA AND SALON	DECK 9, FWD	7:00 PM - 11:00 PM
SHUTTERS PHOTO GALLERY	DECK 4, AFT	7:00 PM - 11:00 PM
WALT DISNEY THEATRE	DECK 4, FWD	SHOWTIMES

### SHOPPING

MICKEY'S MAINSAIL	DECK 4, FWD	8:45 PM - 11:30 PM
SEA TREASURES	DECK 3, FWD	8:45 PM - 11:30 PM
VISTA GALLERY	DECK 4, MID	8:45 PM - 11:30 PM
WHITE CAPS	DECK 4, FWD	8:45 PM - 11:30 PM

## IMPORTANT NUMBERS

Fire/Security: 7-3001  
Medical EMERGENCY: 7-3000  
Health Center: 7-1923

## DINNER MENU

Animator's Palate : Show Dinner  
Carioca's : South American Dinner  
Lumiére's : French Dinner

## DRINK OF THE DAY

Melon Margarita  
(Alcoholic)  
Mango Crush  
(Non - Alcoholic)

## WEATHER FORECAST

Today: Partly Sunny  
High: 72° F/22° C  
Tomorrow: Sunny  
High: 72° F/22° C

Evening Attire: Cruise Casual

## DINING & LOUNGES

### BREAKFAST

CABANAS	DECK 9, AFT	6:00 AM - 11:30 AM
DAISY'S DE LITES	DECK 9, AFT	6:00 AM - 8:30 AM
LUMIÈRE'S	DECK 3, MID	7:00 AM - 9:00 AM

### LUNCH

CABANAS	DECK 9, AFT	11:30 AM - 3:00 PM
DAISY'S DE LITES	DECK 9, AFT	11:00 AM - 6:00 PM
LUMIÈRE'S (À-LA CARTE)	DECK 3, MID	12:00 PM - 1:30 PM
PETE'S BOILER BITES	DECK 9, AFT	11:00 AM - 6:00 PM
PINOCCHIO'S PIZZERIA	DECK 9, MID	11:00 AM - 6:00 PM

### DINNER

ANIMATOR'S PALATE	DECK 4, AFT	6:15 PM & 8:45 PM
CABANAS BUFFET	DECK 9, AFT	6:30 PM - 8:30 PM
CARIOCA'S	DECK 3, AFT	6:15 PM & 8:45 PM
DAISY'S DE LITES	DECK 9, AFT	6:30 PM - 10:00 PM
LUMIÈRE'S	DECK 3, MID	6:15 PM & 8:45 PM
PALO (FOR RESERVATIONS CALL 7-6843)	DECK 10, AFT	6:00 PM - 8:30 PM
PETE'S BOILER BITES	DECK 9, AFT	6:00 PM - 10:00 PM

### LATE NIGHT SNACKS

O'GILLS PUB	DECK 3, FWD	10:45 PM - 11:45 PM
PINOCCHIO'S PIZZERIA	DECK 9, MID	9:30 PM - 12:00 MID
PROMENADE LOUNGE	DECK 3, AFT	10:45 PM - 11:45 PM

### ADDED FEATURES

EYE SCREAM	DECK 9, AFT	11:00 AM - 11:00 PM
BEVERAGE STATION	DECK 9, AFT	24 HOURS
ROOM SERVICE	DIAL 7-4330	24 HOURS

### ENTERTAINMENT - LOUNGES - BARS

Adults must be 21 and older to consume alcoholic beverages.

AFTER HOURS	DECK 3, FWD	(AFTER 9:00 PM. ADULTS ONLY)
COVE CAFE (18+)	DECK 9, MID	6:00 AM - 12:30 AM
D LOUNGE	DECK 4, MID	SHOWTIMES
FATHOMS (18+)	DECK 3, FWD	7:00 PM - 2:00 AM
FROZONE TREATS	DECK 9, AFT	10:30 AM - 8:00 PM
INTERNET CAFE	DECK 3, AFT	24 HOURS
KEYS (18+)	DECK 3, FWD	5:30 PM - 12:30 AM
O'GILLS PUB (18+)	DECK 3, FWD	3:00 PM - 12:30 AM
PRELUDES	DECK 4, FWD	5:30 PM - 9:00 PM
PROMENADE LOUNGE	DECK 3, AFT	9:00 AM - 12:30 AM
PINOCCHIO'S PIZZERIA	DECK 9, MID	9:00 AM - 12:30 AM
SIGNALS (18+)	DECK 9, FWD	10:00 AM - 11:00 PM

Public Health Advisory: Consuming raw or undercooked meats, poultry, seafood, shellfish, or eggs may increase your risk for foodborne illness, especially if you have certain medical condition.

All Ashore: Approx. 7:15 a.m.  
All Aboard: 7:30 p.m.

Ship's Agent In La Spezia

HUGO TRUMPY

Viale S. Bartolomeo 109 (PO BOX 371) 1926 La Spezia, Italy  
E. Troiani - Agcy Dept./La Spezia  
T: +39-0187-551210 ; Fax: +39-0187-551301"