

# PERSONAL NAVIGATOR

Sunrise: 6:11 a.m. Sunset: 9:06 p.m.  
Evening Attire: Formal

Today: Partly Cloudy High: 72°F/22°C  
Tomorrow: Partly Cloudy High: 64°F/18°C

SUNDAY, JUNE 1, 2014

DAY AT SEA

## TWICE CHARMED

AN ORIGINAL TWIST ON THE CINDERELLA STORY

STEP BACK IN TIME TO EXPERIENCE THE STORY OF CINDERELLA IN A MAGICAL NEW WAY. ENJOY THIS MAGNIFICENT MUSICAL PRODUCTION WITH YOUR FAVORITE CHARACTERS - AND A FEW NEW ONES!


WALT DISNEY THEATRE

Deck 4, Forward

6:30 p.m. & 8:45 p.m.

As a courtesy to all Guests, we kindly advise that the saving of seats is **not** permitted in the Walt Disney Theatre.



 Assistance available at the entrance to the Walt Disney Theatre 30 minutes prior to show time.

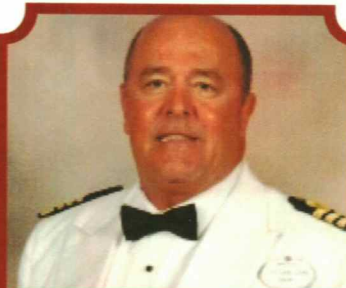
## Disney MAGIC Fun Facts

Tonnage: 84,000  
Length Overall: 984 Feet  
Ship's Registry: *The Bahamas*

### Important Dates

Keel Laid: *October 31, 1996*  
Launch Date: *April 12, 1997*  
Inaugural Cruise: *July 30, 1998*

- The Magic was built by a process called Jumboisation (in 2 separate sections) in Italy at the Fincantieri Maghera Shipyard (stern) and the Fincantieri Ancona Shipyard (bow). The joint of the ship is just in front of Lumiere's.
- The anchor of the Disney Magic weighs 28,200 lbs (12,802.8kg) - the same weight as three elephants.
- Over 50 nationalities make up the 960 Crew Members on board.
- Sorcerer Mickey stands proudly 10 ft tall on the bow of the ship. There are other characters in the artwork around him.
- Goofy hangs 20 ft tall, painting the finishing touches on the stern.



### CAPTAIN'S RECEPTION

Enjoy an exclusive photo with Captain John, & meet some of the ships officers.  
With live music provided by Duo Azucar.

Lobby Atrium,  
Deck 3, Midship,  
5:45 p.m. & 7:45 p.m.

## Don't Miss:

### Wake up With Disney Junior

*D Lounge, Deck 4, Midship - 8:30 a.m.*

Join your Cruise Staff as we continue the party, with special appearances from the world famous Disney Characters.

### Disney Behind the Scenes

*Buena Vista Theatre, Deck 5, Aft - 11:30 a.m.*

Joe Lanzisero has worked on many projects as an Imagineer with Disney for over 3 decades. Learn what it means to be an Imagineer and how he views his work from a kid's point of view, to create rides, shows & even cruise ships.

### Jack-Jack's Incredible Diaper Dash

*Lobby Atrium, Deck 3, Midship - 11:30 a.m.*

Calling all baby Cruisers! It's time to take to the mat to see who's the fastest crawler of the seven seas! Register your baby 15 minutes prior to the big race

### Variety: Donovan & Rebecca (18+)

*Walt Disney Theatre, Deck 4, Forward - 10:30 p.m.*

Featuring the acrobatics & music of Donovan & Rebecca as they entertain you in this adult exclusive show.

## Disney Cruise Line PORT ADVENTURES

A private vehicle is the perfect solution for Guests who wish to tour privately to our ports of call. Visit the Port Adventures Desk located on Deck 3 Midship for more details about the various vehicle offerings including sedans, mini-buses or vans during our transatlantic ports of call.

## DINNER MENU

Animator's Palate: Prince & Princess  
Carioca's: Prince & Princess  
Lumiére's: Prince & Princess

## DRINK OF THE DAY

Nautilus (Alcoholic)  
Star Night (Non Alcoholic)

## IMPORTANT NUMBERS

Fire/Security: 7-3001  
Medical Emergency: 7-3000  
Health Center: 7-1923

# ADULT ACTIVITY HIGHLIGHTS

## SENSES SPA FITNESS CLASSES & SEMINARS

*Abs Attack* - Senses Spa Fitness Center - 8:00 a.m.  
*Body Sculpt Boot Camp* - Senses Spa Fitness Center - 9:00 a.m.  
*Group Cycling* - Senses Spa Fitness Center - 10:00 a.m.  
*Picture Perfect Skin Seminar* - Senses Spa & Salon - 10:30 a.m.  
*Secrets to a Flatter Stomach* - Senses Spa Fitness Center - 11:00 a.m.  
*Introduction to Acupuncture* - Senses Spa & Salon - 11:30 a.m.  
*Ionthermie Seminar* - Senses Spa & Salon - 11:45 a.m.  
*Good Feet: Relieving Back Pain* - Senses Spa & Salon - 2:30 p.m.  
*Acupuncture Seminar: Stress Relief* - Fathoms - 3:00 p.m.  
*Hair Seminar* - Senses Spa & Salon - 3:30 p.m.  
*Burn Fat Faster* - Senses Spa & Salon - 4:00 p.m.  
*Sebastian Secret* - Senses Spa & Salon - 4:30 p.m.  
*Evening Stretch* - Senses Spa & Salon - 5:00 p.m.



## TASTING CLASSES

*Stem to Stern Wine Tasting* (21+) - Keys - 1:00 p.m.  
*Martini Tasting* (21+) - Keys - 2:30 p.m.  
*Cognac Tasting* (21+) - Cove Cafe - 10:30 p.m.  
 Please make reservations for tastings at Guest Services for a nominal fee.  
 Tasting Seminars are only for Guests 21 and Older.

## CLUB 18\*21 - BRUNCH

*Lumiere's, Deck 3, Midship - 11:30 a.m.*  
 Get to know your fellow 18\*21 guests during brunch.

## CLUB 18\*21 - GAME CHALLENGE

*O'Gills Pub, Deck 3, Forward - 5:15 p.m.*  
 Join us and play some of your favorite board games.

## CLUB 18\*21 - MIXER

*D Lounge, Deck 4, Midship - 10:15 p.m.*  
 Come to join fellow cruisers your own age at our exclusive Club 18\*21 event.

## ANYONE CAN COOK

*D Lounge, Deck 4, Midship - 2:30 p.m.*  
 From our galley to yours. Join our chefs as they show you how to prepare delicious dishes. Today's Menu - Rack of Lamb.



## SINGLES' MINGLE

*Cove Cafe, Deck 9, Midship - 4:30 p.m.*  
 Single, single parent or just traveling alone? Join your Cruise Staff for an informal gathering.

## 70'S MUSIC TRIVIA

*O'Gills Pub, Deck 3, Forward - 7:45 p.m.*  
 Let's step back in time and visit Studio 54 as we test your 70's music knowledge.



# FUN FOR ALL AGES HIGHLIGHTS



## WAKE UP WITH DISNEY JUNIOR

*D Lounge, Deck 4, Midship - 8:30 a.m.*  
 Join your Cruise Staff as we continue the party, with special appearances from the world famous Disney Characters.



## SENSES SPA BINGO

*Fathoms, Deck 3, Forward - 10:45 a.m.*  
 Four CASH prizes to be won! Plus great spa prizes that will pamper you, including a mini facial and massages all courtesy of the Senses Spa and Salon. Serenity now! Pre Sales start 15 minutes prior to game.



## JACK-JACK'S INCREDIBLE DIAPER DASH

*Lobby Atrium, Deck 3, Midship - 11:30 a.m.*  
 Calling all baby Cruisers! It's time to take to the mat to see who's the fastest crawler of the seven seas! Register your baby 15 minutes prior to the big race.

## DISNEY MOVIE CHALLENGE POOLSIDE

*Deck Stage, Deck 9, Midship - 12:15 p.m.*  
 So you like movies? And you like bingo? This deck party has them both! Come on out to watch all your favorite movie clips and just maybe your team will win the opportunity to choose the movie played by the pool today!

## MAGIC QUEST

*Fathoms, Deck 3, Forward - 12:45 p.m.*  
 Enjoy the wildest and wackiest scavenger team event on the seven seas!



## CHIP-IT GOLF (12+)

*Lobby Atrium, Deck 3, Midship - 3:15 p.m.*  
 It's par for the course for our Guests 12 and older to compete on our special "greens" in this fun tournament.



## PORT & SHOPPING SHOW

*Fathoms, Deck 3, Forward - 2:00 p.m.*  
 Join your Port and Shopping Guide to learn about the incredible shopping ashore this cruise!



## \$5,000 MEGA JACKPOT BINGO

*Fathoms, Deck 3, Forward - 4:00 p.m.*  
 Don't miss your chance to take home big money! 4 CASH prize games and great raffle prizes to be won! Complete the fourth game in 46 numbers or less and win the \$5,000 Mega Jackpot! Pre Sales start 15 minutes prior to game.

## FORMAL NIGHT AFTER PARTY

*D Lounge, Deck 4, Midship - 10:00 p.m.*  
 Join your Cruise Staff as we continue the party, with special appearances from the world famous Disney Characters.

# YOUTH ACTIVITIES HIGHLIGHTS

## DINE & PLAY

As a convenience for families dining at 8:45 p.m., our Youth Activities Counselors will be available at 9:45 p.m. at the entrance of Lumiere's and Carioca's and 10:00 p.m. at Animator's Palate to bring registered children to join the fun in Disney's Oceaneer Club and Disney's Oceaneer Lab.



*Deck 5, Aft (7-5864) 8:00 a.m. - 11:00 p.m.*

Infants and Toddlers can enjoy toys and activities at It's a Small World Nursery. Reservations are first come, first served so please stop by!



*Deck 5, Midship (7-1440) (3-12 years old) 9:00 a.m. - 12:00 mid*

### TOY STORY BOOT CAMP

*7:15 p.m.*

Join Corporal Green in our own version of boot camp as we learn how to have fun - The Toy Story way!

### BOYS AND GIRLS CHILL

*10:00 p.m.*

Boys you will hang for competition, challenges, and fun. Girls you will chill with music, games, and fun.



*Deck 5, Midship (7-1445) (3-12 years old) 9:00 a.m. - 12:00 mid*

### SUPER SLOPPY SCIENCE

*11:00 a.m.*

Join Professor Make-O-Mess in some of the most extreme experiments you will ever see in the world of Super Sloppy Science!

### ANYONE CAN COOK

*3:30 p.m.*

Anyone can cook as we work together to create some of our favorite treats.



*Deck 2, Midship (7-5816) (11-14 years old) 10:00 a.m. - 1:00 a.m.*

### THAT'S HILARIOUS

*7:45 p.m.*

Ever wanted to show off your comedy skills? Then be a part of the cast for the crazy improv show "That's Hilarious" and put on a live show for your friends.

### ANYONE CAN COOK: PIZZA

*10:30 p.m.*

Anyone can cook as we work together to create some of our favorite treats. From our galley to yours; join our chef as they show to create pizza!



*Deck 10, Midship (7-18517) (14-17 years old) 10:30 a.m. - 2:00 a.m.*

### ESPN DREAM TEAM DRAFT DAY

*5:45 p.m.*

Join us and engage in this interactive fantasy sports draft unlike anything you've ever seen! Can YOU draft the greatest sports team of All-Time?

### PUMP IT UP

*9:00 p.m.*

Join us in the Fitness Center for a Teen Only workout. Meet in Vibe to join in!

# BUENA VISTA THEATRE

Deck 5, Aft  
Today's Movies

DOLBY 3D



8:30 a.m.  
Duration:  
1 hr 52 mins  
Rating: PG



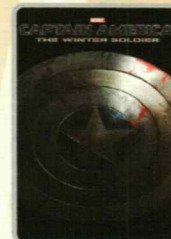
1:00 p.m.  
Duration:  
2 hrs 4 mins  
Rating: PG



3:30 p.m.  
Duration:  
2 hrs 16 mins  
Rating: PG-13



6:00 p.m. & 8:30 p.m.  
Duration:  
1 hr 25 mins  
Rating: G



10:30 p.m.  
Duration:  
2 hrs 16 mins  
Rating: PG-13



### FAMILY VARIETY

Featuring the Physical Comedy of Max Winfrey, as he entertain you in this fun filled family show.

*Fathoms,  
Deck 3, Forward,  
8:00 p.m.*



### VARIETY ACT

Featuring the acrobatics & music of Donovan & Rebecca.

*Family Show,  
1:15 p.m.  
Adult Show (18+),  
10:30 p.m.  
Walt Disney Theatre,  
Deck 4, Forward*

## YOUTH ACTIVITIES OPEN HOUSE

Open House is an opportunity for all to come and participate in a variety of exciting activities and free time in the Oceaneer Club, Oceaneer Lab, Edge, Vibe, and It's a Small World Nursery throughout the cruise. During these times secured programming will still be offered in the other venues for those looking to check their children into care.

Edge: 10:00 a.m. - 11:00 a.m.;  
6:00 p.m. - 7:30 p.m.

Disney's Oceaneer Lab: 6:00 p.m. - 9:00 p.m.  
Disney's Oceaneer Club: 9:00 a.m. - 10:30 a.m.

# MORE TO ENJOY WHILE ONBOARD



## PLAN YOUR NEXT GETAWAY NOW

Our 3 and 4 night Bahamian Cruises are a perfect way to get an instant tropical recharge! Departing from Miami or Port Canaveral, most Bahamian cruises include a stop at Disney's private island, Castaway Cay. Visit the Onboard Sales Desk today and ask about our special onboard booking offer.



## DISNEY VACATION CLUB

Visit the Disney Vacation Club information desk and ask us about show times where you will learn how to turn every vacation into the vacation of a lifetime.

## CURRENCY EXCHANGE

Euros will be available for exchange at Guests Services, Deck 3, Midship, 24 hrs a day. Not all currencies will be exchanged onboard, so please check with Guests Services for further information.

## PORT & SHOPPING INFORMATION

Join Gemma your Port Shopping Guide at 2:00 p.m. in Fathoms on Deck 3, Forward, for this not to be missed presentation, covering all of our upcoming ports of call. Essential information including everything from the history of the ports, to the incredible shopping opportunities that await you. Stop by the Port & Shopping Desk, Deck 3, Midship between 6:30 p.m. and 8:30 p.m. to meet Gemma and pick up your Port Shopping Maps.

## CASH DECLARATION NOTICE

Guests going ashore in port with over 10,000 Euros (or cash equivalent in any other currency), are required to declare it to Customs upon arrival, or risk having it confiscated if stopped by local authorities.



## 10/20/30

Book any 3 Signature Services per person and receive a 10% discount on the 1st service, 20% discount on the 2nd service and a 30% discount on the 3rd service. Indulge in the ultimate relaxation with an ultimate experience to be remembered. Visit us in the spa for more details!

Deck 9, Forward - Phone : 7-1465



Visit Villafranche and enjoy a sightseeing noun, including a visit to Monaco Rock, passing the Oceanographic Museum. Embark on a boat for an amazing cruise along one of the world's most scenic shorelines and explore the charming hillside towns of Vernazza and Monterosso in a La Spezia, Italy or emerge in an unique experience to an exclusive visit to the Vatican Museum in Rome and complete it spending half day in Pompeii in Naples. Great tours are still available!

Visit the friendly team at the  
Port Adventures Desk, Deck 3, Midship.

## SHOPPING

### UNIQUE SEA BAGS MADE FROM RECYCLED SAILS

Crafted in Portland, Maine, from real sails collected from sailing communities all over the world, breathing new life into recently retired sails, our totes embody the magic of the sea and bring to every Sea Bags owner a bit of the mystery surrounding the specific sail used in the making of their tote. Visit White Caps today to view the entire collection. Deck 4, Forward.

### ERNST BENZ WATCHES

Manufactured in Switzerland and made in the time honored tradition of aviation timekeepers and the fine art of watch making, these large formats, self-winding instruments are renowned for their accuracy, durability and legibility. Stop by White Caps to see our full collection today! Deck 4, Forward.

### SOPHIA FIORI GUESS THE CARAT WEIGHT

Whoever guesses closest wins a Sophia Fiori fine jewelry piece! Winners Announced tonight at 7:30 p.m. Must be present to win. White Caps, Deck 4, Forward.

### H2O BATH COLLECTION

Treat yourself to the ultimate indulgence with H2O bath products. H2O offers shampoo, conditioner, lip balm, hydrating body lotion and after sun care. Available in Whitecaps, Deck 4, Midship.

### ROMERO BRITTO ART AT THE VISTA GALLERY

Stop by the Vista Gallery to view original artwork by popular artists such as Romero Britto. Britto's whimsical and colorful pieces feature some of your favorite Disney characters in a style that only Britto can create. Deck 4, Midship.

### DISNEY FROZEN DVD AVAILABLE ONBOARD

For the ultimate family souvenir destination, visit Mickey's Mainsail where you'll find everything from Captain Mickey Plush to Disney Cruise Line apparel and where, while supplies last, you can get your DVD copy of Disney Frozen. Deck 4, Forward.

## SOPHIA FIORI

Industry leaders in vivid colored diamonds, and more specifically Caribbean blue diamonds - one of the single most popular purchases at sea because it reminds everyone of the colors of the breathtaking ocean!

## WHITE CAPS

Deck 4, Forward

Sophia Fiori



## SAY CHEESE!

Your family is dressed up and ready to enjoy the evening. Capture the memories in your formal attire by visiting our professional portraiture studios in the Lobby Atrium, Deck 3 Midship from 5:15 pm-6:00 pm, 7:30-8:30 pm, and 9:30pm-10:15 pm.

## IMPORTANT INFORMATION

### Security Notice

All Guests (including Children) who wish to disembark or embark the ship are required to present their Key to the World card at the gangway. A passport is also required for all Guests. Guests under the age of 18 are required to have a parent, guardian or other responsible adult sign an authorization form at the Guest Service Desk if they wish to go ashore unaccompanied or with any adult from another stateroom.

**Sunscreen/Insect Repellent Advisory**  
Use sunscreen first and protect against mosquito borne illnesses by applying insect repellent on top of sunscreen when going ashore.  
**Cold and Flu Reminder**

Please wash hands frequently and thoroughly, particularly before meals. Contact the Health Center by dialing 7-1923, should anyone in your party become ill.

### Inclement Weather

For the safety of all Guests, outdoor events may be changed due to unforeseen weather conditions.

### Corridor Quiet Hours

As a courtesy to all our Guests, please recognize quiet hallway hours from 10:00 p.m. til 8:00 a.m.

### Environmental Message

With Disney's commitment to the Environment

please refrain from throwing anything over the Ship's side. Thank you.

### No Reserved Seats Policy

As a courtesy to all Guests we kindly advise that the saving of seats is not permitted in the Walt Disney Theatre, and the saving of the sun loungers is not permitted on Deck 9 and 10. Items left unattended will be returned to lost and found at Guest Services, Deck 3, Midship.

### Smoking

For the comfort of our guests, the following areas

are designated as smoking areas:

- Deck 10 Forward, Starboard Side
- Deck 9, Forward, Starboard Side at Quiet Cove
- Deck 4, Starboard Side from 6:00 p.m. to 6:00 a.m. only (all of Deck 4 is non-smoking from 6:00 a.m. to 6:00 p.m.)

Smoking is prohibited inside all guest staterooms and on stateroom verandahs. Guests found smoking in their staterooms or on their verandahs will be charged a \$250 stateroom recovery fee.

Theatrical performances may use artificial fog, strobe lights, pyrotechnics and other special effects. For the safety of our performers and the comfort of those around you, the use of any photography or video recording device or any electronic equipment is prohibited.

### Verandah Safety

Please do not leave any combustible materials on your balcony when not present in your stateroom for safety reasons.

Walt Disney Theatre

Mañana	8:30	8:45	9:00	9:15	9:30	9:45	10:00	10:15	10:30	10:45	11:00	11:15	11:30	11:45	12:00	12:15	12:30	12:45	1:00	1:15	1:30	
FUNNEL VISION	Cinderella (G) Funnel Vision							Monsters, Inc. (G) Funnel Vision							Movie Challenge Poolside Funnel Vision							
BUENA VISTA THEATRE	Muppets Most Wanted (PG) Duration: 1 Hour 52 Minutes											Behind the Scenes: Joe Lanzisero Buena Vista Theatre					Million Dollar Arm (PG) Duration: 2 Hours 4 Minutes					
PERSONAJE	Princess Gathering Lobby Atrium			Sofia Dk 4, Mid			Minnie Dk 4, Mid			Mickey Gazebo			Donald Gazebo			Chip & Dale Gazebo		Captain America Preludes		Minnie Gazebo		
DIVERSION PARA TODAS LAS EDADES	Disney Junior D Lounge			Villafraiche: Gateway to Magical Monte Animator's Palate			Bingo Pre Sales			Senses Spa BINGO Fathoms			Movie Challenge Poolside Funnel Vision			Magic Quest Fathoms		Variety: Donovan & Rebecca Walt Disney Theatre				
	Interdenominational Service Keys (Guest Led)			Family Crafts D Lounge			Animation - Mickey Promenade Lounge			Crafts: Door Hangers Promenade Lounge			Behind the Scenes: Joe Lanzisero Buena Vista Theatre			Rome: Glorious Past, Rigorous Present Animator's Palate						
ADULTOS	Friends of Bill W. Animator's Palate			Art of The Theme Show Tour Palo			Disney Vacation Club Members Celebration D Lounge			Club 18*21 - Brunch Lumiere's			Disney Vacation Club Group Preview D Lounge									
VIBE 14-17 AÑOS DE EDAD								Coffee Break			Animation Cells					Zombified						
EDGE 11-14 AÑOS DE EDAD								Youth Activities Open House					Goofy's World Records					Gender Wars				
OCEANEER LAB 3-12 AÑOS DE EDAD								Goofy Files					Super Sloppy Science					Lunch				
OCEANEER CLUB 3-12 AÑOS DE EDAD								Youth Activities Open House			Stitch's Great Adventure			Aladdin's Fun Adventures			Lunch					
	Mickey's Puzzle Playtime			Become Iron Man!																		
Tarde	1:45	2:00	2:15	2:30	2:45	3:00	3:15	3:30	3:45	4:00	4:15	4:30	4:45	5:00	5:15	5:30	5:45	6:00	6:15	6:30	6:45	
FUNNEL VISION												Beauty & the Beast (G) Funnel Vision					A Bug's Life (G) Funnel Vision					
BUENA VISTA THEATRE												Captain America: The Winter Soldier (PG-13) <b>DOLBY 3D</b> Duration: 2 Hours 16 Minutes					DisneyNature: Bears (G) Duration: 1 Hour 25 Minutes					
PERSONAJE	Pluto Gazebo			Captain America Preludes			Stitch Gazebo			Daisy Gazebo			Pluto Preludes			Minnie Preludes			Chip & Dale Preludes			
DIVERSION PARA TODAS LAS EDADES	Disney Tunes Trivia Promenade Lounge			Esencia Spanish Dancers Deck Stage			Bingo Pre Sales			\$5,000 Mega Jackpot BINGO Fathoms			Toddler Time D Lounge			Captain's Welcome Reception Lobby Atrium		TWICE CHERMED Walt Disney Theatre				
	Port & Shopping Show Fathoms			Chip It Golf (12+) Lobby Atrium			Crafts: Origami Favorites Promenade Lounge			Flamenco Dance Class with Esencia Promenade Lounge			Live Music with Midtown Promenade Lounge									
ADULTOS	Crafts: Tile Coasters O'Gills Pub			Disney Cruise Line ANYONE CAN COOK D Lounge			70's Music Trivia O'Gills Pub			Art of The Theme Show Tour Palo			Club 18*21 - Game Challenge O'Gills Pub			Wii Challenge O'Gills Pub						
VIBE 14-17 AÑOS DE EDAD	Zombified							Bring It!					ESPN Dream Team Draft Day									
EDGE 11-14 AÑOS DE EDAD	Gender Wars			Brains and Brawns			Basketball Challenge					4th Pigs Pasta Palace			Youth Activities Open House							
OCEANEER LAB 3-12 AÑOS DE EDAD	GAGA Ball							Anyone Can Cook					Oceaneer Rangers			Dinner						
OCEANEER CLUB 3-12 AÑOS DE EDAD	Become Iron Man!							Story Time with Belle					Once Upon a Time			Memory Wall						
Noche	7:00	7:15	7:30	7:45	8:00	8:15	8:30	8:45	9:00	9:15	9:30	9:45	10:00	10:15	10:30	10:45	11:00	11:15	11:30	11:45	12:00	
FUNNEL VISION	Ratatouille (G) Funnel Vision							The Mighty Ducks (PG) Funnel Vision														
BUENA VISTA THEATRE												DisneyNature: Bears (G) Duration: 1 Hour 25 Minutes					Captain America: The Winter Soldier (PG-13) Duration: 2 Hours 16 Minutes					
PERSONAJE	Minnie Preludes			Mickey Preludes			Daisy Lobby Atrium (P)			Donald Preludes			Mickey Lobby Atrium (P)									
DIVERSION PARA TODAS LAS EDADES	DJ Matt Fathoms			Variety: Max Winfrey Fathoms			TWICE CHERMED Walt Disney Theatre			Formal Night After Party D Lounge			Family Superstar Karaoke D Lounge									
	Family Superstar Karaoke D Lounge			Captain's Welcome Reception Lobby Atrium			Wii Challenge O'Gills Pub			Live Music with Bernadette Bihari Keys			Aileen de la Cruz LIVE Club 18*21 O'Gills Pub			Variety: Donovan & Rebecca Walt Disney Theatre			DJ Matt Fathoms			
ADULTOS	70's Music Trivia O'Gills Pub			A Glimpse of Broadway Keys			Live Music with Bernadette Bihari Keys			Aileen de la Cruz LIVE Club 18*21 O'Gills Pub			Variety: Donovan & Rebecca Walt Disney Theatre			Live Music with Bernadette Bihari Keys						
VIBE 14-17 AÑOS DE EDAD	Basketball Challenge							Smoothie Hour					Pump It Up					Anyone Can Cook: Pizza				
EDGE 11-14 AÑOS DE EDAD	Open House			That's Hilarious			Trivia Challenge					Anyone Can Cook: Pizza					Dance Party					
OCEANEER LAB 3-12 AÑOS DE EDAD	Youth Activities Open House							Animation Antics					Boys and Girls Chill									
OCEANEER CLUB 3-12 AÑOS DE EDAD	Toy Story Boot Camp			Picture This			Relay Games					Boys and Girls Chill										

Simbolo para actividades que se repetirán durante el crucero



DOBLAR

¡Doble por la línea punteada y lléve con usted esta información para no perder la diversión!

DOBLAR

SERIE IN THE SPOTLIGHT

SERIE JUMP UP! SERIE CREATE & INVENT SERIE SOLVE IT! SERIE OPEN HOUSE

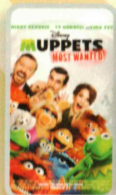
SERIE CLUBHOUSE SERIE STORYBOOK

DOMINGO, 1 DE JUNIO DEL 2014 - DIA EN ALTAMAR

# BUENA VISTA THEATRE

Cubierta 5, Popa

DOLBY 3D



8:30 a.m. Duración: 1 hr 52 mins Clasificación: PG	1:00 p.m. Duración: 2 hrs 4 mins Clasificación: PG	3:30 p.m. Duración: 2 hrs 16 mins Clasificación: PG-13	6:00 p.m. & 8:30 p.m. Duración: 1 hr 25 mins Clasificación: G	10:30 p.m. Duración: 2 hrs 16 mins Clasificación: PG-13
---	---	---	---	--

## Encuentro de personajes

### PRINCESS GATHERING

Lobby Atrium  
9:00 a.m. & 9:00 a.m.

### PRINCESS SOFIA

Deck 4, Midship  
9:30 a.m.

### PRINCESS MINNIE

Deck 4, Midship  
10:00 a.m.

### MICKEY MOUSE

Gazebo - 12:00 p.m.  
Preludes - 8:00 p.m.  
Lobby Atrium (P)  
10:00 p.m.

### DONALD DUCK

Gazebo - 12:30 p.m.  
Preludes - 9:30 p.m.

### CHIP & DALE

Gazebo - 1:00 p.m.  
Preludes - 5:45 p.m.

### CAPTAIN AMERICA

Preludes  
1:00 p.m. & 2:30 p.m.

### MINNIE MOUSE

Gazebo - 1:30 p.m.  
Preludes  
5:15 p.m. & 7:30 p.m.

### PLUTO

Gazebo - 2:00 p.m.  
Preludes - 4:15 p.m.

### STITCH

Gazebo - 3:15 p.m.

### DAISY DUCK

Gazebo - 3:45 p.m.  
Preludes - 4:45 p.m.  
Lobby Atrium (P)  
9:30 p.m.

¡No olvide su cámara para capturar esos momentos mágicos!

Consulte aquí cada día los encuentros de los personajes.  
Para información más detallada sobre los encuentros de los personajes revise la pantalla del Atrio Principal.

Se anunciarán las presentaciones y saludos mientras la fila esté abierta.  
Para evitar decepciones, por favor, asegúrese de llegar puntualmente.

## ACTIVIDADES INFANTILES TEMÁTICAS

**SERIE CLUBHOUSE**  
se centra en actividades y contenido que atraen a los más pequeños.

**SERIE STORYBOOK**  
está diseñada con una fuerte conexión con las historias clásicas de Disney.

**SERIE JUMP UP!**  
incluye juegos fuera del agua y actividades orientadas al movimiento.

**SERIE CREATE & INVENT**  
actividades enfocadas en estimular la imaginación y creatividad en los niños.

**SERIE IN THE SPOTLIGHT**  
se centra en la presencia de los niños en el escenario con muchas actividades y entusiasmo.

**SERIE SOLVE IT!**  
pondrá a prueba a los niños con actividades basadas en problemas y soluciones.

### OPEN HOUSE DE ACTIVIDADES PARA JÓVENES

Actividades abiertas: No necesita reservación previa. Diseñado para toda la familia.

## DIRECTORIO DEL BARCO

### ACTIVIDADES INFANTILES

DISNEY'S OCEANEER CLUB	CUBIERTA 5, CENTRAL	9:00 AM - 12:00 MID
DISNEY'S OCEANEER LAB	CUBIERTA 5, CENTRAL	9:00 AM - 12:00 MID
EDGE	CUBIERTA 2, CENTRAL	10:00 AM - 1:00 AM
IT'S A SMALL WORLD NURSERY	CUBIERTA 5, POA	8:00 AM - 11:00 PM
VIBE	CUBIERTA 11, CENTRAL	10:30 AM - 2:00 AM

### PISCINAS

\*Children under 12 years of age must have adult supervision in all pools.

AQUADUNK	CUBIERTA 10, CENTRAL	10:00 AM - 9:00 PM
AQUALAB	CUBIERTA 9, POA	9:00 AM - 9:00 PM
GOOFY'S POOL	CUBIERTA 9, CENTRAL	9:00 AM - 6:00 PM 8:00 PM - 10:00 PM
NEPHEWS' SPLASH ZONE	CUBIERTA 9, POA	9:00 AM - 6:00 PM
QUIET COVE POOL (18+)	CUBIERTA 9, PROA	6:00 AM - 12:00 MID
TWIST 'N' SPOUT	CUBIERTA 9, POA	10:00 AM - 9:00 PM

### RECREATION

PORT ADVENTURES DESK	CUBIERTA 3, CENTRAL	9:00 AM - 1:00 PM 2:00 PM - 5:00 PM 5:00 PM - 9:30 PM
SENSES FITNESS CENTER (18+)	CUBIERTA 9, PROA	6:30 AM - 10:00 PM
WIDE WORLD OF SPORTS DECK	CUBIERTA 10, PROA	LAS 24 HORAS

### INFORMACIÓN GENERAL

BUENA VISTA THEATRE	CUBIERTA 5, POA	ESPECTACULOS
RECEPCIÓN DE DISNEY VACATION CLUB	CUBIERTA 4, CENTRAL	5:00 PM - 8:00 PM
RECEPCIÓN DE ONBOARD SALES	CUBIERTA 4, CENTRAL	8:30 AM - 9:30 AM 4:00 PM - 6:00 PM 7:00 PM - 10:00 PM

FUNNEL VISION	CUBIERTA 9, CENTRAL	ESPECTACULOS
GUEST SERVICES (SERVICIO AL HUÉSPED)	CUBIERTA 3, CENTRAL	LAS 24 HORAS
TRENZADO DEL CABELLO	CUBIERTA 9, CENTRAL	9:00 AM - 12:00 PM 1:00 PM - 6:00 PM 7:00 PM - 9:00 PM

CENTRO MÉDICO	CUBIERTA 1, PROA	9:30 AM - 11:00 AM 4:30 PM - 7:30 PM
RECEPCIÓN DE PORT & SHOPPING	CUBIERTA 3, CENTRAL	6:30 PM - 8:30 PM
PRELUDES	CUBIERTA 4, PROA	5:30 PM - 9:00 PM
QUARTER MASTERS (ARCADE)	CUBIERTA 9, CENTRAL	LAS 24 HORAS
SHUTTERS PHOTO GALLERY	CUBIERTA 4, POA	10:00 AM - 10:00 PM
SENSES SPA AND SALON	CUBIERTA 9, PROA	8:00 AM - 10:00 PM
WALT DISNEY THEATRE	CUBIERTA 4, PROA	ESPECTACULOS

### COMIDA

MICKEY'S MAINSAIL	CUBIERTA 4, PROA	9:30 AM - 11:00 PM
QUACKS	CUBIERTA 9, CENTRAL	10:00 AM - 4:00 PM
SEA TREASURES	CUBIERTA 3, PROA	2:00 PM - 11:00 PM
VISTA GALLERY	CUBIERTA 4, CENTRAL	11:00 AM - 2:00 PM 4:00 PM - 10:00 PM
WHITE CAPS	CUBIERTA 4, PROA	9:30 AM - 11:00 PM

### NÚMEROS IMPORTANTES

Bomberos/Seguridad: 7-3001  
Emergencia Médica: 7-3000  
Centro de salud: 7-1923

**MENÚ DE CENAS**  
Animator's Palate: Prince & Princess  
Carioca's: Prince & Princess  
Lumière's: Prince & Princess

**BEBIDA DEL DIA**  
Nautilus (bebida con alcohol)  
Star Night (bebida sin alcohol)

**PROMONOSTICO METEOROLÓGICO**  
Hoy: Parcialmente Nublado  
Máxima: 72° F/22° C  
Mañana:  
Parcialmente Nublado  
Máxima: 64° F/18° C

Atuendo de noche: Formal

## RESTAURANTES Y SALONES

### DESAYUNO

CABANAS	CUBIERTA 9, POA	7:30 AM - 11:30 AM
DAISY'S DE LITES	CUBIERTA 9, POA	7:00 AM - 9:00 AM
LUMIÈRE'S BRUNCH	CUBIERTA 3, CENTRAL	9:00 AM - 12:30 PM
PALO (RESERVACIONES MARQUE 7-6843)	CUBIERTA 10, POA	10:00 AM - 1:30 PM

### COMIDA

CABANAS	CUBIERTA 9, POA	11:30 AM - 3:00 PM
DAISY'S DE LITES	CUBIERTA 9, POA	11:00 AM - 6:00 PM
LUMIÈRE'S BRUNCH	CUBIERTA 3, CENTRAL	9:00 AM - 12:30 PM
PALO (RESERVACIONES MARQUE 7-6843)	CUBIERTA 10, POA	10:00 AM - 1:30 PM
PETE'S BOILER BITES	CUBIERTA 9, POA	11:00 AM - 6:00 PM
PINOCCHIO'S PIZZERIA	CUBIERTA 9, CENTRAL	11:00 AM - 6:00 PM

### CENA

ANIMATOR'S PALATE	CUBIERTA 4, POA	6:15 PM & 8:45 PM
LUMIÈRE'S	CUBIERTA 3, CENTRAL	6:15 PM & 8:45 PM
PALO (RESERVACIONES MARQUE 7-6843)	CUBIERTA 10, POA	6:00 PM - 8:30 PM
CARIOCA'S	CUBIERTA 3, POA	6:15 PM & 8:45 PM
PETE'S BOILER BITES	CUBIERTA 9, POA	6:00 PM - 10:00 PM
CABANAS TABLE SERVICE	CUBIERTA 9, POA	6:30 PM - 8:30 PM

### APERITIVOS NOCTURNOS

O'GILLS PUB	CUBIERTA 3, PROA	10:45 PM - 11:45 PM
PINOCCHIO'S PIZZERIA	CUBIERTA 9, CENTRAL	9:30 PM - 12:00 MID
PROMENADE LOUNGE	CUBIERTA 3, POA	10:45 PM - 11:45 PM

### CARACTERÍSTICAS ADICIONALES

EYE SCREAM	CUBIERTA 9, POA	11:00 AM - 11:00 PM
ESTACION DE BEBIDAS	CUBIERTA 9, POA	LAS 24 HORAS
SERVICIO DE HABITACIONES	MARQUE 7-4330	LAS 24 HORAS

### ENTRETENIMIENTO - SALONES - BARES

Los adultos deben ser mayores de 21 años para consumir bebidas alcohólicas.

AFTER HOURS	CUBIERTA 3, PROA	(Después de 9:00 p.m. 18+)
COVE CAFE (18+)	CUBIERTA 9, CENTRAL	7:00 AM - 12:30 AM
D LOUNGE	CUBIERTA 4, CENTRAL	SHOWTIMES
FATHOMS (18+)	CUBIERTA 3, PROA	7:00 PM - 2:00 AM
FROZONE TREATS	CUBIERTA 9, POA	10:00 AM - 8:00 PM
INTERNET CAFE	CUBIERTA 3, POA	24 HOURS
KEYS (18+)	CUBIERTA 3, PROA	5:30 PM - 12:30 AM
O'GILLS PUB (18+)	CUBIERTA 3, PROA	12:00 PM - 12:30 AM
PRELUDES	CUBIERTA 4, PROA	5:30 PM - 9:00 PM
PROMENADE LOUNGE	CUBIERTA 3, POA	9:00 AM - 12:30 AM
PINOCCHIO'S PIZZERIA	CUBIERTA 9, CENTRAL	9:00 AM - 12:30 AM
SIGNALS (18+)	CUBIERTA 9, PROA	9:30 AM - 11:00 PM

A los clientes que soliciten comidas preparadas de origen animal no cocinadas por completo o crudas se les informa que la comida no se cocina lo suficiente como para garantizar su seguridad.



### PRINCESS GATHERING

No pierdas tu oportunidad de asistir a esta reunión con la realeza hoy en el Lobby Atrium y no olvides traer tu cámara.  
9:00 a.m.