

PERSONAL NAVIGATOR

TUESDAY, MAY 20, 2014

Sunrise 6:22 a.m. Sunset 7:52 p.m.
 Evening Attire: Formal
 All Ashore: 8:30 a.m.
 All Aboard: 3:00 p.m.
 Today: Sunny High: 78°F/26°C
 Tomorrow: Partly Cloudy High: 76°F/24°C

DISNEY'S CASTAWAY CAY

TWICE CHARMED

AN ORIGINAL TWIST ON THE CINDERELLA STORY

STEP BACK IN TIME TO EXPERIENCE THE STORY OF CINDERELLA IN A MAGICAL NEW WAY. ENJOY THIS MAGNIFICENT MUSICAL PRODUCTION WITH YOUR FAVORITE CHARACTERS - AND A FEW NEW ONES!

WALT DISNEY THEATRE

Deck 4, Forward

6:30 p.m. & 8:45 p.m.

As a courtesy to all Guests, we kindly advise that the saving of seats is **not** permitted in the Walt Disney Theatre.



Assistance available at the entrance to the Walt Disney Theatre 30 minutes prior to show time.

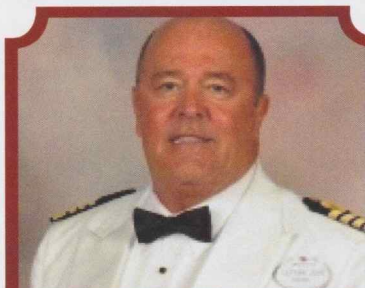


Disney's Castaway Cay

Reserved exclusively for Guests on Disney Cruise Line Bahamian and Caribbean cruise vacations, Castaway Cay is Disney's private port-of-call paradise. On this island, enjoy tropical leisure activities, such as snorkeling, boating, swimming and sunbathing.

Friendly Reminders

- Serenity Bay is reserved for Guests 18 and older.
- Your Key To The World Card will need to be used for all transactions on Disney's Castaway Cay except for the Post Office.
- A limited number of all-terrain wheelchairs are available across from Scuttle's Cove.
- For your convenience, beach towels are available as you leave the ship; please return them at the gangway at the end of your day.
- Due to our commitment to the environment, we ask that seashells, coral and other natural treasures be left undisturbed at Disney's Castaway Cay for all to enjoy.



CAPTAIN'S RECEPTION

Enjoy an exclusive photo with Captain John, & meet some of the ships officers. With live music provided by Duo Azucar.

Lobby Atrium,
Deck 3, Midship,
5:30 p.m. & 7:45 p.m.

Don't Miss:

run **Disney: Castaway Cay 5K (10+)**
Fathoms, Deck 3, Forward - 8:15 a.m.

Runners (10+) meet at 8:15 a.m. We will depart the ship at 8:30 a.m., and make our way to the Bike Rentals where the run will begin.

Sail Away Deck Party

Deck Stage, Deck 9, Midship - 3:00 p.m.

Join us up on deck as we say bye bye to the Bahamas and 'hola' to Europe!

Match Your Mate (18+)

Fathoms, Deck 3, Forward - 10:30 p.m.


It's time to play everyone's favorite couples game show - Match Your Mate!



TIME ZONE CHANGE

Remember to turn your clocks **FORWARD 1 HOUR** upon retiring on **TUESDAY** evening, or first thing **WEDNESDAY** morning.

Disney CRUISE LINE

PORT ADVENTURES 

Welcome to Disney's Island Paradise Castaway Cay. All bookings for today are made directly on the island. Please visit Marge's Barges for times and availability.

DINNER MENU

Animator's Palate: Prince & Princess
 Carioca's: Prince & Princess
 Lumière's: Prince & Princess

DRINK OF THE DAY

Stingray (Alcoholic)
 Lava Smoothie (Non Alcoholic)

IMPORTANT NUMBERS

Fire/Security: 7-3001
 Medical Emergency: 7-3000
 Health Center: 7-1923

ADULT ACTIVITY HIGHLIGHTS



SENSES SPA FITNESS CLASSES & SEMINARS

Wake Up & Stretch Class - Senses Spa Fitness Center - 8:00 a.m.
Body Sculpt Boot Camp - Senses Spa Fitness Center - 9:00 a.m.
Introduction to Acupuncture - Keys - 10:00 a.m.
Yoga on the Beach - Serenity Bay - 11:00 a.m.
Good Feet Seminar: Walking in Comfort - Senses Spa & Salon - 3:30 p.m.
Acupuncture Demonstration - Keys - 4:00 p.m.
Secrets to a Flatter Stomach - Senses Spa & Salon - 4:30 p.m.
Pilates - Senses Spa Fitness Center - 5:00 p.m.

CLUB 18*21 - BASKETBALL FREE THROW

In Da Shade Game Pavilion, Disney's Castaway Cay - 12:30 p.m.

Join your Cruise Staff in this fun tournament and see how many you can sink in 30 seconds!

CLUB 18*21 - MIXER

O'Gills Pub, Deck 3, Forward - 10:15 p.m.

Come to join fellow cruisers your own age at our exclusive Club 18*21 event.

LIVE GUITAR WITH CARRIE STONE

Quiet Cove Pool, Deck 9, Forward - 3:45 p.m.

O'Gills Pub, Deck 3, Forward - 7:45 p.m., 9:45 p.m. & 10:45 p.m.

Join Carrie Stone as she plays live guitar for your listening pleasure.

LIVE PIANO WITH AILEEN DE LA CRUZ

Keys, Deck 3, Forward - 7:45 p.m., 9:45 p.m. & 11:00 p.m.

Join Aileen de la Cruz as she plays piano live for your listening pleasure.

ADULT EXCLUSIVE OPEN HOUSE

Disney's Oceaneer Club, Deck 5, Midship - 10:00 p.m.

Explore the Youth Activities spaces specially reserved for Guests 18 and over, and turn into a child again as you experience the magic of Become Iron Man.

FUN FOR ALL AGES HIGHLIGHTS



RUNDISNEY: CASTAWAY CAY 5K (10+)

Fathoms, Deck 3, Forward - 8:15 a.m.

Runners (10+) meet at 8:15 a.m. We will depart the ship at 8:30 a.m., and make our way to the Bike Rentals where the run will begin.

ISLAND POWER WALK

Meet on the pier by the showers, Disney's Castaway Cay - 9:30 a.m.

Join your Cruise Staff for a brisk walk around the island. Walk will begin 15 minutes after the scheduled meet time.

CRAB RACES

Island Gazebo 1, Disney's Castaway Cay - 11:45 a.m.

Island Gazebo 2, Disney's Castaway Cay - 12:45 p.m.

Watch some local sea creatures make a break for the finish line.

FAMILY WHALE DIG

Monstro Point, Disney's Castaway Cay - 1:00 p.m.

Our island paleontologist leads us in the excavation of a giant whale skeleton and other fossilized treasures! Make no bones about it, this is an adventure every beachcomber is sure to dig!

SAIL AWAY DECK PARTY

Deck Stage, Deck 9, Midship - 3:00 p.m.

Join us up on deck as we say bye bye to the Bahamas and 'hola' to Europe!

FAMILY SUPERSTAR KARAOKE

D Lounge, Deck 4, Midship - 7:45 p.m. & 10:45 p.m.

Join your Cruise Staff in D Lounge tonight and sing along to your favorite song - fun for everyone.

FORMAL NIGHT AFTER PARTY

D Lounge, Deck 4, Midship - 10:00 p.m.

Join your Cruise Staff as we continue the party, with special appearances from the world famous Disney Characters.



YOUTH ACTIVITIES HIGHLIGHTS

DINE & PLAY

As a convenience for families dining at 8:30 p.m., our Youth Activities Counselors will be available at 9:30 p.m. at the entrance of Lumiere's and Carioca's and 9:45 p.m. at Animator's Palate to bring registered children to join the fun in Disney's Oceaneer Club and Disney's Oceaneer Lab.



Deck 5, Aft (7-5864) 8:30 a.m. - 11:30 p.m.

Infants and Toddlers can enjoy toys and activities at It's a Small World Nursery. Reservations are first come, first served so please stop by!



**Deck 5, Midship (7-1440)
(3-12 years old) 3:30 p.m. - 10:00 p.m.**

ONCE UPON A TIME

6:30 p.m.

Join Bartleby the Bookmaker for a magical, musical story time featuring a Disney Princess!

THE ROYAL BALL

7:30 p.m.

Attend your own Royal Ball and learn to be a prince or a princess.



**Deck 5, Midship (7-1445)
(3-12 years old) 9:00 a.m. - 12:00 mid**

MAGIC SHOW

7:30 p.m.

The Magnificent Magician will demonstrate to you some of the best known magic tricks on the sea.

SUPER SLOPPY SCIENCE

10:00 p.m.

Join Professor Make-O-Mess in some of the most extreme experiments you will ever see in the world of Super Sloppy Science!



**Deck 2, Midship (7-5816)
(11-14 years old)**

2:30 p.m. - 1:00 a.m.

SCAVENGER HUNT

3:30 p.m.

A little friendly competition exploring the ship; see if you can solve the clues and finish first.

4TH PIGS PASTA PALACE

7:00 p.m.

Build your very own house made out of pasta and play-doh for Franco, the Fourth Little Pig, to see if it will withstand nature's forces.



**Deck 10, Midship (7-18517)
(14-17 years old) 2:30 p.m. - 2:00 a.m.**

PUMP IT UP

9:00 p.m.

Join us in the Fitness Center for a Teen Only workout. Meet in Vibe to join in!

GENDER WARS

10:00 p.m.

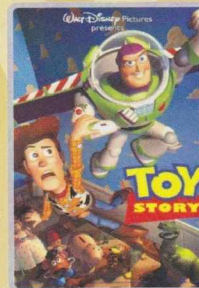
Join us as we find out who really are the king or queen of the castle.

BUENA VISTA THEATRE

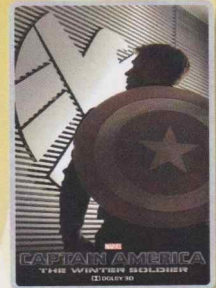
Deck 5, Aft

Today's Movies

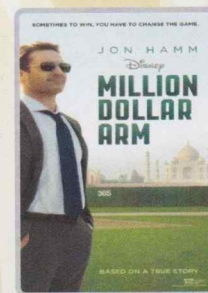
DOLBY 3D



8:30 a.m.
Duration: 1 hr 21 mins
Rating: G



2:45 p.m. & 10:30 p.m.
Duration: 2 hrs 16 mins
Rating: PG-13



5:30 p.m. & 8:00 p.m.
Duration: 2 hrs 4 mins
Rating: PG



FAMILY VARIETY

Featuring the Improv Comedy of Improv Shmimprov as they entertain you in this fun family event.

*Fathoms,
Deck 3, Forward,
7:45 p.m.*



GAME SHOW

It's time to play everyone's favorite couples game show - Match Your Mate!

*Fathoms,
Deck 3, Forward,
10:30 p.m.*

YOUTH ACTIVITIES OPEN HOUSE

Open House is an opportunity for all to come and participate in a variety of exciting activities and free time in the Oceaneer Club, Oceaneer Lab, Edge, Vibe, and It's a Small World Nursery throughout the cruise. During these times secured programming will still be offered in the other venues for those looking to check their children into care.

Disney's Oceaneer Lab: 9:00 a.m. - 2:00 p.m.
Disney's Oceaneer Club: 3:30 p.m. - 6:00 p.m.

MORE TO ENJOY WHILE ONBOARD



EASTERN, WESTERN OR SOUTHERN CARIBBEAN
Set your compass for the Caribbean! Disney Cruise Line offers a variety of 7-night sailings to exotic ports in the Eastern, Western or Southern Caribbean. Visit the Onboard Sales Desk today to explore options. Remember to ask about our special onboard booking offer!



DISNEY VACATION CLUB
Visit the Disney Vacation Club information desk and ask us about show times where you will learn how to turn every vacation into the vacation of a lifetime.

Connect @ Sea

We are now offering a NEW and improved Internet service to stay connected on your cruise like no other in the industry! Internet packages range from \$0.25 per MB - \$89.00 (1000 MB package). For more information contact your Connect@Sea Expert or Guest Services onboard.



Deck 9, Forward

RAINFOREST

Enjoy the serenity of steams room and, heated benches, showers and much more. Couples Pass ~ \$361/Single Pass ~ \$196

CABANA MASSAGE

Take advantage of most relaxing massage and beautify view that Castaway can offer. Melt you tension away just on the beach.
\$147 - 50 minutes

SOPHIA FIORI

Industry leaders in vivid colored diamonds, and more specifically Caribbean blue diamonds – one of the single most popular purchases at sea because it reminds everyone of the colors of the Breathtaking Ocean!

WHITE CAPS

Deck 4, Forward

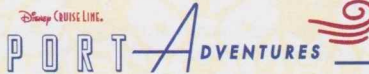
Sophia Fiori



Shutters

SAY CHEESE!

Your family is dressed up and ready to enjoy the evening. Capture the memories in your formal attire by visiting our professional portraiture studios in the Lobby Atrium, Deck 3, Midship from 5:15 p.m. - 6:00 p.m., 7:30 p.m. - 8:30 p.m., and 9:30 p.m.-10:15 p.m.



Welcome to Disney's Island Paradise Castaway Cay.

Today is the day to relax in an inner tube, snorkel in the Caribbean blue, get up-close and personal to real life stingrays or fly high in the sky on a parasail excursion during a breathtaking aerial adventure. Visit Marge's Barges or one of the rental locations and our friendly team will assist in making any last minute bookings.

PORT ADVENTURES MEETING TIMES AND LOCATIONS

as per ticket	Castaway Ray's Stingray Adventure	Gil's Fins and Boats
as per ticket	Parasailing	Marge's Barges
as per ticket	Glass Bottom Boat	Marge's Barges
as per ticket	The Wild Side Teen Adventure	Vibe (on ship)
as per ticket	Seahorse Catamaran Snorkel Adventures	Marge's Barges
as per ticket	Nature Walk and Kayaking	Marge's Barges
as per ticket	Castaway Cay Bottom Fishing	Marge's Barges
as per ticket	Abaco Backcountry Fishing Adventure	Marge's Barges
as per ticket	Rigid Hull Snorkeling Excursion	Marge's Barges

CASTAWAY CAY ISLAND RENTALS

Rentals will be open until 1:30 p.m.

Bicycles	Upon Arrival	Bicycle Rental
Boats	Upon Arrival	Boat Beach
Float	Upon Arrival	Gil's Fins and Boats/Flippers and Floats
Getaway Package	Upon Arrival	Gil's Fins and Boats/Flippers and Floats
Snorkeling Gear	Upon Arrival	Gil's Fins and Boats/Flippers and Floats

Based on availability, reservations can be made on the island at each rental location. Waivers: Please have your waivers signed before arriving to the departure location.

SHOPPING

RUNDISNEY CASTAWAY CAY 5K MERCHANDISE

If you're a runner participating in the runDisney Castaway Cay 5K, visit Buy the Seashore and commemorate your experience with runDisney Castaway Cay 5K specific merchandise such as the unique trading pin and apparel for the whole family!

HELPFUL SHOPPING TIP FOR CASTAWAY CAY

Avoid getting sand and water on your souvenirs by placing your newly purchased items from Castaway Cay on hold at She Sells Seashells and Everything Else and at Buy the Seashore. Your items will then be delivered to White Caps on Deck 4, Forward, where you can pick up during store hours.

SPECIAL OFFER ON DISNEY'S CASTAWAY CAY

While visiting Disney's Castaway Cay today, take the time to visit She Sells Seashells and Everything Else and Buy the Seashore where you can find Disney's Castaway Cay branded items such as casual and beach wear for the whole family. Purchase a Disney Castaway Cay Tote for \$17.95 with any merchandise purchase of \$40.00 or more. Restrictions apply. While supplies last. Offer subject to change without notice.

ERNST BENZ WATCHES

Manufactured in Switzerland and made in the time honored tradition of aviation timekeepers and the fine art of watch making, these large formats, self-winding instruments are renowned for their accuracy, durability and legibility. Stop by White Caps to see our full collection today! Deck 4, Forward.

SOPHIA FIORI DIAMOND TRUNK SHOW

Sophia Fiori, Hollywood's first choice in diamonds, has boarded the Disney Magic to premier their new collection of white & colored diamonds worn at the Oscars, Golden Globes, Emmy and Grammy Awards. Stop by White Caps, Deck 4 and view this stunning collection.

Due to port regulations, when the ship is docked, the stores will remain closed.

Disney Cruise Line © 2014

IMPORTANT INFORMATION

Security Notice

All Guests (including Children) who wish to disembark or embark the ship are required to present their Key to the World card at the gangway. A photo ID is also required for those Guests who are 18 years of age or older. Guests under the age of 18 are required to have a parent, guardian or other responsible adult sign an authorization form at the Guest Service Desk if they wish to go ashore unaccompanied or with any adult from another stateroom.

Sunscreen/Insect Repellent Advisory
Use sunscreen first and protect against mosquito borne illnesses by applying insect repellent on top of sunscreen when going ashore.

Cold and Flu Reminder

Please wash hands frequently and thoroughly, particularly before meals. Contact the Health Center by dialing 7-1923, should anyone in your party become ill.

Inclement Weather

For the safety of all Guests, outdoor events may be changed due to unforeseen weather conditions.

Corridor Quiet Hours

As a courtesy to all our Guests, please recognize quiet hallway hours from 10:00 p.m. til 8:00 a.m.

Environmental Message

With Disney's commitment to the Environment please refrain from throwing anything over the Ship's side. Thank you.

No Reserved Seats Policy

As a courtesy to all Guests we kindly advise that the saving of seats is not permitted in the Walt Disney Theatre, and the saving of the sun loungers is not permitted on Deck 9 and 10. Items left unattended will be returned to lost and found at Guest Services, Deck 3, Midship.

Smoking

For the comfort of our guests, the following areas are designated as smoking areas:
• Deck 10 Forward, Starboard Side
• Deck 9, Forward, Starboard Side at Quiet Cove
• Deck 4, Starboard Side from 6:00 p.m. to 6:00 a.m. only (all of Deck 4 is non-smoking from 6:00 a.m. to 6:00 p.m.)
Smoking is prohibited inside all guest staterooms and on stateroom verandahs. Guests found smoking in their staterooms or on their verandahs will be charged a \$250 stateroom recovery fee.

Walt Disney Theatre

Theatrical performances may use artificial fog, strobe lights, pyrotechnics and other special effects. For the safety of our performers and the comfort of those around you, the use of any photography or video recording device or any electronic equipment is prohibited.

Verandah Safety

Please do not leave any combustible materials on your balcony when not present in your stateroom for safety reasons.

Morning	8:30	8:45	9:00	9:15	9:30	9:45	10:00	10:15	10:30	10:45	11:00	11:15	11:30	11:45	12:00	12:15	12:30	12:45	1:00	1:15	1:30			
FUNNEL VISION	Atlantis: The Lost Empire (PG) Funnel Vision								Beverly Hills Chihuahua (PG) Funnel Vision								Chicken Little (G) Funnel Vision							
BUENA VISTA THEATRE	Toy Story (G) Duration: 1 Hour 21 Minutes																							
CHARACTERS	Mickey & Minnie Boat Beach		Chip & Dale Post Office		Donald, Daisy Boat Beach		Captain Jack Sparrow Marge's Barges		Chip & Dale Post Office		Goofy Rustmore						Character Dance Party Gazebo 1							
FUN FOR ALL AGES	(Meet at 8:15 a.m., Departs at 8:30 a.m.) Fathoms (10+)				Island Power Walk Meet on the pier by the showers (Departs at 9:45 a.m.)								Crab Races Island Gazebo 1				Crab Races Island Gazebo 2		Family Whale Dig Monstro Point					
ADULTS	Friends of Bill W. Keys		Boot Camp Senses Spa Fitness Center				Introduction to Acupuncture Keys				Yoga on the Beach Serenity Bay						Club 18*21 Basketball Free Throw In Da Shade							
VIBE 14-17 YEARS OLD									Invade Teen Hideout				Lunch at Cookies Too				Invade Teen Hideout							
EDGE 11-14 YEARS OLD					Meet At Marge's Barges				Meet At In Da Shade				Pelican Plunge				Lunch at Cookies Too				Invade Teen Hideout			
SCUTTLES COVE			Water Relays				Whale Dig				Whale Dig				Lunch at Pop's Props		Caribbean Beach Party							
OCEANEER LAB 3-12 YEARS OLD			Youth Activities Open House 🍷																					
OCEANEER CLUB 3-12 YEARS OLD																								

Afternoon	1:45	2:00	2:15	2:30	2:45	3:00	3:15	3:30	3:45	4:00	4:15	4:30	4:45	5:00	5:15	5:30	5:45	6:00	6:15	6:30	6:45	
FUNNEL VISION	Virtual Tours Funnel Vision						Sail Away Deck Party Funnel Vision				G-Force (PG) Funnel Vision											
BUENA VISTA THEATRE	Captain America: The Winter Soldier (PG-13)										Million Dollar Arm (PG) Duration: 2 Hours 4 Minutes											
CHARACTERS											Goofy Dk 4, Mid		Minnie Preludes		Donald Dk 4, Mid		Mickey Preludes					
FUN FOR ALL AGES	Sail Away Deck Party Deck Stage				Disney Vacation Club Members Celebration D Lounge				Crafts: Origami Creations Promenade Lounge				Cruisin' for Trivia Promenade Lounge		Live Music with Midtown Promenade Lounge		Captain's Welcome Reception Lobby Atrium		Walt Disney Theatre			
ADULTS					Live Guitar with Carrie Stone Quiet Cove Pool				Secrets to a Flatter Stomach Senses Spa & Salon								Live Piano Keys					
VIBE 14-17 YEARS OLD					Walking in Comfort Senses Spa & Salon				Acupuncture Demonstration Keys				Pilates Senses Spa Fitness Center				Basketball Challenge					
EDGE 11-14 YEARS OLD					Scavenger Hunt				Scavenger Hunt				Basketball Challenge									
OCEANEER LAB 3-12 YEARS OLD					Piston Cup Challenge 🏆												Dinner					
OCEANEER CLUB 3-12 YEARS OLD					Youth Activities Open House 🍷												Once Upon a Time 🏰					
									Nemo's Coral Reef Adventure 🐠													

Evening	7:00	7:15	7:30	7:45	8:00	8:15	8:30	8:45	9:00	9:15	9:30	9:45	10:00	10:15	10:30	10:45	11:00	11:15	11:30	11:45	12:00	
FUNNEL VISION	Princess Protection Program (TV-G) Funnel Vision								The Parent Trap (PG) Funnel Vision													
BUENA VISTA THEATRE	Million Dollar Arm (PG) Duration: 2 Hours 4 Minutes										Captain America: The Winter Soldier (PG-13)											
CHARACTERS	Minnie Dk 4, Mid		Mickey Mouse Dk 4, Mid						Goofy Preludes				Chip & Dale Preludes									
FUN FOR ALL AGES	Variety: Improv Shmimprov Fathoms				Captain's Welcome Reception Lobby Atrium				Walt Disney Theatre				Formal Night After Party D Lounge		Family Superstar Karaoke D Lounge							
					Family Superstar Karaoke Promenade Lounge								Disney Trivia Promenade Lounge		Live Music with Duo Azucar Promenade Lounge							
ADULTS	Live Piano with Aileen de la Cruz Keys								Live Piano with Bernadett Bihari Keys				DJ Matt Fathoms		Club 18*21 O'Gills Pub		Match Your Mate Fathoms		DJ Matt Fathoms			
VIBE 14-17 YEARS OLD					Smoothie Hour				Pump It Up				Gender Wars				Teen Choice					
EDGE 11-14 YEARS OLD	4th Pigs Pasta Palace								Gender Wars				Movie Time									
OCEANEER LAB 3-12 YEARS OLD					Magic Show 🎩				GAGA Ball 🎮								Super Sloppy Science 🧪					
OCEANEER CLUB 3-12 YEARS OLD					The Royal Ball 🎭								Glow Jam 🎵				Adult Exclusive Open House 🍷					
																	Become Iron Man! 🦱					

Symbol for activities that will be repeated during the cruise

Fold along the dotted lines and take me with you so you don't miss any of the fun!

FOLD

FOLD

FOLD

IN THE SPOTLIGHT SERIES

JUMP UP! SERIES

CREATE & INVENT SERIES

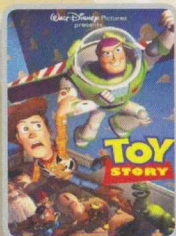
CLUBHOUSE SERIES

STORYBOOK SERIES

TUESDAY, MAY 20, 2014 - DISNEY'S CASTAWAY CAY

BUENA VISTA THEATRE

Deck 5, Aft
DOLBY 3D



8:30 a.m.
Duration: 1 hr 21 mins
Rating: G



2:45 p.m. & 10:30 p.m.
Duration: 2 hrs 16 mins
Rating: PG-13



5:30 p.m. & 8:00 p.m.
Duration: 2 hrs 4 Minutes
Rating: PG

Character Appearances

PLUTO

Mt. Rustmore
9:00 a.m. & 10:00 a.m.

MICKEY & MINNIE

Boat Beach
9:00 a.m. & 10:00 a.m.

CHIP & DALE

Post Office
9:15 a.m. & 10:15 a.m.
Preludes - 10:00 p.m.

DONALD & DAISY

Boat Beach
9:30 a.m. & 10:30 a.m.

GOOFY

Mt. Rustmore
9:30 a.m. & 10:30 a.m.
Deck 4, Midship - 5:00 p.m.
Preludes - 9:30 p.m.

CAPTAIN JACK SPARROW

Marge's Barges - 9:45 a.m.

CHARACTER DANCE PARTY

Island Gazebo 1 - 12:00 p.m.

MINNIE MOUSE

Preludes - 5:15 p.m.
Deck 4, Midship - 7:15 p.m.

DONALD DUCK

Deck 4, Midship - 5:30 p.m.
Preludes - 7:30 p.m.

MICKEY MOUSE

Preludes - 5:45 p.m.
Deck 4, Midship - 7:45 p.m.

DAISY DUCK

Preludes - 8:00 p.m.



(P) - Port Side, (S) - Starboard Side

Don't forget your Camera to capture those Magical Moments!

Check here each day for Character appearances.

For detailed Character appearance information, please see the Character Information Board in the Lobby Atrium.

Meet-and-Greets will be advertised for the length of time the line will be open. To avoid disappointment, please meet at start time of appearances.

YOUTH ACTIVITIES THEMED EXPERIENCES

CLUBHOUSE SERIES
focuses on movement and features content which appeals to younger children.

JUMP UP! SERIES
includes large group games & movement-oriented activities.

IN THE SPOTLIGHT SERIES
focuses on children's stage presence with lots of activities and enthusiasm.

STORYBOOK SERIES
is designed with a strong connection to the Disney classic stories.

CREATE & INVENT SERIES
will have a tactile focus allowing children to create and admire their work.

SOLVE IT! SERIES
are less active, but will challenge children with problem/solutions-based activities.

YOUTH ACTIVITIES OPEN HOUSE

Activities for families, adults and children of all ages to enjoy together.

SHIP DIRECTORY

YOUTH ACTIVITIES

DISNEY'S OCEANEER CLUB	DECK 5, MID	3:30 PM - 10:00 PM
DISNEY'S OCEANEER LAB	DECK 5, MID	9:00 AM - 12:00 MID
EDGE	DECK 2, MID	2:30 PM - 1:00 AM
IT'S A SMALL WORLD NURSERY	DECK 5, AFT	8:30 AM - 11:30 PM
SCUTTLE'S COVE	CASTAWAY CAY	8:45 AM - 2:00 PM
VIBE	DECK 10, MID	2:30 PM - 2:00 AM

POOLS

*Children under 12 years of age must have adult supervision in all pools.

AQUADUNK	DECK 10, MID	11:00 AM - 8:00 PM
AQUALAB	DECK 9, AFT	9:00 AM - 9:00 PM
GOOFY'S POOL	DECK 9, MID	9:00 AM - 6:00 PM
		8:00 PM - 10:00 PM
NEPHEWS' SPLASH ZONE	DECK 9, AFT	9:00 AM - 6:00 PM
QUIET COVE POOL (18+)	DECK 9, FWD	6:00 AM - 12:00 MID
TWIST 'N' SPOUT	DECK 9, AFT	10:00 AM - 8:00 PM

RECREATION

PORT ADVENTURES DESK	DECK 3, MID	
SENSES FITNESS CENTER (18+)	DECK 9, FWD	6:30 AM - 10:00 PM
WIDE WORLD OF SPORTS DECK	DECK 10, FWD	24 HOURS

GENERAL INFORMATION

BUENA VISTA THEATRE	DECK 5, AFT	SHOWTIMES
DISNEY VACATION CLUB DESK	DECK 4, MID	5:00 PM - 10:00 PM
ONBOARD SALES DESK	DECK 4, MID	8:30 AM - 9:30 AM
		4:00 PM - 6:00 PM
		7:00 PM - 10:00 PM
FUNNEL VISION	DECK 9, MID	SHOWTIMES
GUEST SERVICES	DECK 3, MID	24 HOURS
HAIR BRAIDING	DECK 9, MID	
MEDICAL HEALTH CENTER	DECK 1, FWD	9:30 AM - 11:00 AM
		4:30 PM - 7:00 PM

PORT & SHOPPING DESK	DECK 3, MID	
PRELUDES	DECK 4, FWD	5:30 PM - 9:00 PM
QUARTER MASTERS (ARCADE)	DECK 9, MID	24 HOURS
SENSES SPA AND SALON	DECK 9, FWD	8:00 AM - 10:00 PM
SHUTTERS PHOTO GALLERY	DECK 4, AFT	4:00 PM - 10:00 PM
WALT DISNEY THEATRE	DECK 4, FWD	SHOWTIMES

SHOPPING

MICKEY'S MAINSAIL	DECK 4, FWD	4:00 PM - 11:00 PM
QUACKS	DECK 9, MID	
SEA TREASURES	DECK 3, FWD	7:00 PM - 11:00 PM
VISTA GALLERY	DECK 4, MID	7:00 PM - 10:00 PM
WHITE CAPS	DECK 4, FWD	5:30 PM - 11:00 PM

TIME ZONE CHANGE

Remember to turn your clocks **FORWARD**
1 HOUR upon retiring on **TUESDAY** evening, or
first thing **WEDNESDAY** morning.



IMPORTANT NUMBERS

Fire/Security: 7-3001
Medical EMERGENCY: 7-3000

DINNER MENU	Animator's Palate: Prince & Princess	DRINK OF THE DAY	Stingray (Alcoholic)	WEATHER FORECAST	Today: Sunny
	Carioca's: Prince & Princess		Lava Smoothie (Non-Alcoholic)		High: 78°F/26°C
	Lumiére's: Prince & Princess				Tomorrow: Partly Cloudy
Dining Times: 6:00pm & 8:30pm		Evening Attire: Formal		High: 76°F/24°C	

DINING & LOUNGES

BREAKFAST

CABANAS	DECK 9, AFT	7:30 AM - 11:00 AM
CARIOCA'S (À-LA CARTE)	DECK 3, MID	8:00 AM - 9:30 AM
DAISY'S DE LITES	DECK 9, AFT	7:00 AM - 9:00 AM

LUNCH

CABANAS	DECK 9, AFT	11:30 AM - 2:00 PM
COOKIES BBQ	CASTAWAY CAY	11:30 AM - 1:30 PM
COOKIES TOO BBQ	CASTAWAY CAY	11:30 AM - 1:30 PM
DAISY'S DE LITES	DECK 9, AFT	11:00 AM - 6:00 PM
PETE'S BOILER BITES	DECK 9, AFT	11:00 AM - 6:00 PM
PINOCCHIO'S PIZZERIA	DECK 9, MID	11:00 AM - 6:00 PM
SERENITY BAY BBQ (18+)	CASTAWAY CAY	11:30 AM - 1:30 PM

DINNER

ANIMATOR'S PALATE	DECK 4, AFT	6:00 PM & 8:30 PM
CABANAS TABLE SERVICE	DECK 9, AFT	6:30 PM - 8:30 PM
CARIOCA'S	DECK 3, AFT	6:00 PM & 8:30 PM
LUMIÈRE'S	DECK 3, MID	6:00 PM & 8:30 PM
PALO (FOR RESERVATIONS CALL 7-6843)	DECK 10, AFT	6:00 PM - 8:30 PM
PETE'S BOILER BITES	DECK 9, AFT	6:00 PM - 10:00 PM

LATE NIGHT SNACKS

O'GILLS PUB	DECK 3, FWD	10:45 PM - 11:45 PM
PINOCCHIO'S PIZZERIA	DECK 9, MID	9:30 PM - 12:00 MID
PROMENADE LOUNGE	DECK 3, AFT	10:45 PM - 11:45 PM

ADDED FEATURES

EYE SCREAM	DECK 9, AFT	11:00 AM - 11:00 PM
BEVERAGE STATION	DECK 9, AFT	24 HOURS
ROOM SERVICE	DIAL 7-4330	24 HOURS

ENTERTAINMENT - LOUNGES - BARS

Adults must be 21 and older to consume alcoholic beverages.

AFTER HOURS	DECK 3, FWD	(AFTER 9:00 P.M. ADULTS ONLY)
COVE CAFE (18+)	DECK 9, MID	7:00 AM - 12:00 MID
CASTAWAY AIR BAR	CASTAWAY CAY	10:00 AM - 1:30 PM
CONCHED OUT BAR	CASTAWAY CAY	9:30 AM - 2:00 PM
D LOUNGE	DECK 4, MID	SHOWTIMES
FATHOMS (18+)	DECK 3, FWD	7:00 PM - 2:00 AM
FROZONE TREATS	DECK 9, AFT	3:00 PM - 8:00 PM
HEADS UP BAR	CASTAWAY CAY	10:00 AM - 1:30 PM
INTERNET CAFE	DECK 3, AFT	24 HOURS
KEYS (18+)	DECK 3, FWD	5:30 PM - 12:30 AM
O'GILLS PUB (18+)	DECK 3, FWD	3:00 PM - 12:30 AM
PRELUDES	DECK 4, FWD	5:30 PM - 9:00 PM
PROMENADE LOUNGE	DECK 3, AFT	2:30 PM - 12:00 MID
PINOCCHIO'S PIZZERIA	DECK 9, MID	9:30 AM - 12:00 MID
SAND BAR	CASTAWAY CAY	9:30 AM - 1:30 PM
SIGNALS (18+)	DECK 9, FWD	11:00 AM - 10:30 PM

Public Health Advisory: Consuming raw or undercooked meats, poultry, seafood, shellfish, or eggs may increase your risk for foodborne illness, especially if you have certain medical condition.

All Ashore: Approx. 8:30 a.m.
All Aboard: 3:00 p.m.

All Guest will require their Key To The World Card to debark the ship.
All Guests 18 & older will require a photo ID when debarking the ship.