

# PERSONAL NAVIGATOR

THURSDAY, JUNE 5, 2014

Sunrise: 5:55 a.m. Sunset: 7:38 p.m.  
Evening Attire: Semi Formal

Today: Cloudy High: 78°F/26°C  
Tomorrow: Cloudy High: 80°F/27°C

DAY AT SEA

## Disney's Believe

Genie from Aladdin and many of Disney's most beloved magic makers take a father on a magical journey to show him that anything is possible if you just believe.

WALT DISNEY THEATRE  
DECK 3 & 4, FORWARD  
6:15 p.m. & 8:30 p.m.



As a courtesy to all Guests, we kindly advise that the saving of seats is **not** permitted in the Walt Disney Theatre.



Assistance available at the entrance to the Walt Disney Theatre 30 minutes prior to show time.

## Disney FANTASY Fun Facts

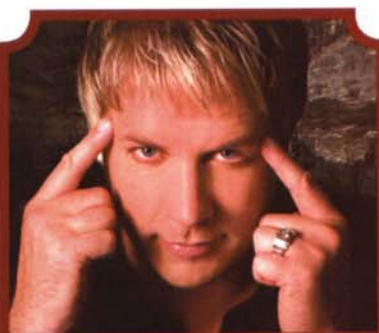
While the cute baby elephant, Dumbo serves as a fantastic stern character, in real life he would have to gather 24,266 other adult male African elephants to match the weight of the Disney Fantasy.

A "light point" is shipbuilders' lingo for anything that's a light. There are approximately 80,000 light points on the Disney Fantasy – "double the normal number for a ship this size," according to Meyer Werft, the shipyard in Germany where the Disney Fantasy was built. The large number is the result of Disney's flair for theatrical experiences – accomplished primarily with LEDs and other "environmentally friendly" lighting.

Looking upward in the ship's Lobby Atrium brings Guest's eye-to-crystal with a glowing piece of "Art Nouveau-inspired jewelry" – a cascading chandelier flowing downward from a massive stained-glass flourish on the ceiling in peacock hues of greens and blues. The chandelier itself is more than 10 feet in diameter, a one-of-a-kind work of art evoking a peacock in stained glass and more than 60,000 clear Swarovski crystal beads.

### Debark Talk Broadcast

Your Cruise Director, Clayton, presents important information including details regarding U.S. Customs and Border Protection procedures. Tune into Channel 5 of your stateroom TV.



### ADULT VARIETY ACT

Featuring the Magic and Illusions of Mike Super, as he entertains you in this adult exclusive show.  
Walt Disney Theatre (18+),  
Deck 3 & 4, Forward,  
11:00 p.m.  
(Doors Open At 10:45 p.m.)

## Don't Miss:

### Captain's Signing

*White Caps, Deck 3, Forward - 1:00 p.m.*

Meet the Master of the Disney Fantasy and have your cruise memories signed.

### Disney's Behind the Scenes

**Executive Creative Director,**

**Walt Disney Imagineering: Theron Skees (18+)**

*Buena Vista Theatre, Deck 4 & 5, Forward - 2:00 p.m.*

Join Theron Skees for a look at how Imagineers are re-imagining the Downtown Disney Property, including a look at the design, story telling & place making that will transform Downtown Disney into Disney Springs.

### Club New Year's Eve

*D Lounge, Deck 4, Midship - 10:15 p.m.*

Club New Year's Eve, you won't want to miss this journey of musical genres in history and performances by some of your favorite Cruise Staff. Bring your family and help us count down to a brand new year!

### Majority Rules (18+)

*The Tube, Deck 4, Aft - 10:15 p.m.*

Join your Club Host, to find out who really rules!



### Sport's Simulators

Digital sports simulators are available at Goofy's Sports Deck on Deck 13, Aft. This state-of-the-art virtual sports experience includes golf, basketball, baseball, hockey, football and soccer. Book now at the Port Adventures Desk, Deck 5, Midship.

## DINNER MENU

Animator's Palate: Captain's Gala  
Enchanted Garden: Captain's Gala  
Royal Court: Captain's Gala

## DRINK OF THE DAY

High Tide (Alcoholic)  
Passion Cream Freeze  
(Non Alcoholic)

### IMPORTANT NUMBERS

Fire/Security: 7-3001  
Medical Emergency: 7-3000  
Health Center: 7-1923



# ADULT ACTIVITY HIGHLIGHTS

## SENSES SPA FITNESS CLASSES & SEMINARS

*Sunrise Stretch* - Donald's Pool - 7:00 a.m.  
*Fab Abs* - Donald's Pool - 7:30 a.m.  
*Body Sculpt Boot Camp* (Nom. Fee) - Senses Fitness Center - 9:00 a.m.  
*Detox For Health and Weight Loss* - Senses Fitness Center - 11:00 a.m.  
*Improving Your Posture-Walk in Comfort* - Senses Spa & Salon - 12:00 p.m.  
*Acupuncture: Chinese Herbs* - Senses Fitness Center - 1:15 p.m.  
*Secrets to a Flatter Stomach* - Senses Fitness Center - 2:00 p.m.  
*Group Cycling* - Senses Fitness Center - 4:00 p.m.  
*Complimentary Footprint Analysis* - Senses Spa & Salon - 5:00 p.m.  
*Fitness Frenzy* (13-17, Nom. Fee) - Senses Fitness Center - 7:00 p.m.

## TASTING CLASSES

*Chocolate & Liquor Tasting* (21+) - Ooh La La - 12:15 p.m.  
*Martini Tasting* (21+) - Meridian - 1:00 p.m.  
*Mixology* (21+) - Skyline - 2:00 p.m. & 4:00 p.m.  
*Rum Tasting* (21+) - Meridian - 3:00 p.m.  
*Italian Cocktail Tasting* (21+) - La Piazza - 4:45 p.m.  
*Tequila & Margarita Tasting* (21+) - Ooh La La - 4:45 p.m.  
 Please make reservations for tastings at Guest Services for a nominal fee. Tasting Seminars are only for Guests 21 and Older.

## CLUB 18\*21 - 2000'S MUSIC CHALLENGE

*O'Gills Pub, Deck 4, Aft - 11:45 a.m.*

## CLUB 18\*21 - LUNCH

*Royal Court, Deck 3, Midship - 12:30 p.m.*

## CLUB 18\*21 - MIXER

*The Tube, Deck 4, Aft - 10:00 p.m.*

## ART OF THE THEME SHOW TOUR

*Pre-Book at Guest Services, Deck 3, Midship*

Join us on a guided ship tour and discover the key ingredients that make the Disney Fantasy cruise ship one-of-a-kind.

## ANYONE CAN COOK - LOBSTER RAVIOLI

*D Lounge, Deck 4, Midship - 2:15 p.m.*

From our galley to yours. Join our chefs as they show you how to prepare delicious dishes.  
 Today's Menu - Lobster Ravioli

## MAJORITY RULES

*The Tube, Deck 4, Aft - 10:15 p.m.*

Join your Club Host, to find out who really rules!

# FUN FOR ALL AGES HIGHLIGHTS

## WAKE UP WITH DISNEY JUNIOR

*D Lounge, Deck 4, Midship - 9:00 a.m.*

What happens when you experience unlimited fun with your favorite Disney Junior shows? You get an exciting dance party designed especially for preschoolers ages seven and under.

## DISNEY ANIMATION: STAGING A SCENE

*D Lounge, Deck 4, Midship - 9:45 a.m. & 12:45 p.m.*

Go behind the scenes at Walt Disney Animation Studios and learn how basic poses, silhouette, and placement (long shot, medium shot, close-up) enhance animation storytelling. Then, participate in a drawing exercise where you make the choices to communicate a story in this fun and fascinating enrichment program.

## JACK-JACK'S INCREDIBLE DIAPER DASH

*Lobby Atrium, Deck 3, Midship - 10:00 a.m.*

Calling all baby Cruisers! It's time to take to the mat to see who's the fastest crawler of the seven seas! Register your baby 15 minutes prior to the big race.

## MICKEY 200

*The Tube, Deck 4, Aft - 10:30 a.m.*

Don't eat your vegetables... race them in this wild and wacky charge to the finish line. May the best veggie win! (Limited Availability)

## \$10,000 MEGA JACKPOT BINGO

*D Lounge, Deck 4, Midship - 11:00 a.m.*

It's Big, it's Massive, it's Supersized! It's \$10,000 MEGA Jackpot Bingo! Take home \$10,000 if you can cover your card in 46 numbers or less. If not, we carry on to play for the biggest cash prize of the session. Pre Sales start 15 minutes prior to game.

## DISNEY VACATION CLUB GROUP PREVIEW

*The Tube, Deck 4, Aft - 12:00 p.m.*

Want to learn more about taking magical vacations year after year? Please see a Disney Vacation Club representative on Deck 4, Midship, or call 7-2805 from your stateroom phone for more information about our interactive group presentation.

## FINAL JACKPOT BINGO

*Buena Vista Theatre, Deck 4 & 5, Forward - 4:15 p.m.*

The snowball jackpot MUST BE WON at this final session! Beat the line and get your cards early. Who will be the lucky winner? It could be you! Pre Sales start 30 minutes prior to game.

## MIRROR MIRROR

*D Lounge, Deck 4, Midship - 7:30 p.m. & 9:45 p.m.*

Head to D Lounge for the fairest game show of them all, Mirror Mirror. Featuring the Magic Mirror and everyone's favorite dwarf, Dopey.

## CLUB NEW YEAR'S EVE

*D Lounge, Deck 4, Midship - 10:15 p.m.*

Club New Year's Eve, you won't want to miss this journey of musical genres in history and performances by some of your favorite Cruise Staff. Bring your family and help us count down to a brand new year!





# YOUTH ACTIVITIES HIGHLIGHTS

## DINE & PLAY

A convenience for families dining at 8:15 p.m., our Youth Activities Counselors will be available at 9:15 p.m. at the entrance of Royal Court, Enchanted Garden and Animator's Palate dining rooms to bring registered children to join the fun in the Youth Activity areas.



Deck 5, Midship (7-5864) 9:00 a.m. - 11:30 p.m.

## OPEN HOUSE

8:00 a.m. - 9:00 a.m.

Your chance to see our toddler space, It's A Small World Nursery.



Deck 5, Midship (7-1440)  
(3-12 years old) 9:00 a.m. - 12:00 mid

## JOURNEY TO NEVERLAND

11:30 a.m.

Join Peter Pan as he takes you on an adventure on the Magic Playfloor.

## HEFFALUMP EXPODISHUN

3:00 p.m.

The Heffalump is missing! Help us find him before the Wozzles do!



Deck 5, Midship (7-1445)  
(3-12 years old) 9:00 a.m. - 12:00 mid

## GET THE HOOK

1:00 p.m.

A villainous villain has stolen Captain Hook's prized golden hook. Become a member of the Top Deck Detective Agency and help solve the clues to retrieve Hook's hook.

## PISTON CUP CHALLENGE

6:00 p.m.

It's Dinoco time and you're part of the pit crew! Design your own race car and see if you've got what it takes to end up in the Winner's Circle!



Deck 13, Midship (7-9743)  
(11-14 years old)

9:00 a.m. - 1:00 a.m.

## HOLD THE PHONE

12:00 p.m.

Answer our riddles and make it back fast, without finishing last.

## BRAINS AND BRAWNS

4:00 p.m.

You will compete against each other to solve clues, take part in physical challenges, and reach the finish first.



Entrance on Deck 4, Forward (7-9418)  
(14-17 years old) 9:00 a.m. - 2:00 a.m.

## DREAM NOW! SEA HOW! - CREATE IT

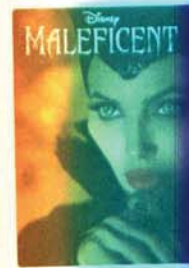
3:30 p.m.

Imagine a job where your days are spent dreaming up plots, characters, designs or mechanics that only come from one place... In this VIP Experience you will meet one of the creative minds with Disney. A special Guest will ignite your imagination and answer your questions.

# BUENA VISTA THEATRE

Deck 4 & 5, Midship  
Today's Movies

Open Captioning



8:30 a.m.  
Duration: 1 hr 37 mins  
Rating: PG



10:30 a.m.  
Duration: 1 hr 25 mins  
Rating: G



5:30 p.m. & 8:15 p.m.  
Duration: 2 hrs 4 mins  
Rating: PG



11:00 p.m.  
Duration: 1 hr 52 mins  
Rating: PG



## FAMILY VARIETY ACT

Featuring the Comedy of Adam Ace, as he entertains the entire family in this fun-filled show.

*The Tube,  
Deck 4, Aft,  
7:30 p.m.*



## FAMILY DANCE PARTY

Club New Year's Eve, you won't want to miss this journey of musical genres in history and performances by some of your favorite Cruise Staff. Bring your family and help us count down to a brand new year!

*D Lounge,  
Deck 4, Midship,  
10:15 p.m.*

## YOUTH ACTIVITIES OPEN HOUSE

Open House is an opportunity for all to come and participate in a variety of exciting activities and free time in the Oceaneer Club, Oceaneer Lab, It's A Small World Nursery, Vibe and Edge throughout the cruise. During these times secured programming will still be offered in the other venue for those looking to check their children into care.

Disney's Oceaneer Lab: 10:00 p.m. - 12:00 mid  
Disney's Oceaneer Club: 9:00 a.m. - 10:30 a.m.  
Vibe: 9:00 a.m. - 10:00 a.m. & 6:30 p.m. - 8:30 p.m.  
Edge: 9:00 a.m. - 11:00 a.m. & 5:00 p.m. - 7:00 p.m.



# MORE TO ENJOY WHILE ONBOARD



The puppies from 101 Dalmatians have gone missing! Use your special detective "badge" to track down the puppies and catch the villain who took them.

**Deck 2 & 5, Midship,**  
9:00 a.m. - 10:00 p.m.



**SENSES**  
SPA & SALON

**SPA TOPIA  
SPECIAL**

Full body exfoliation. Hotstone back massage on the back neck and shoulders, booster facial and foot and ankle massage

75 mins. \$135

## GUESS THE CARAT!

Guess the carat weight of one of our exquisite Sophia Fiori diamond rings. Whoever guesses closest wins a 5 carat midnight sapphire and a pair of midnight black sapphire studs! 9:30 a.m. - 7:00 p.m. Winners announced and raffle at 7:30 p.m. Must be present to win!

White Caps, Deck 3, Forward.  
This offer is not affiliated with Disney Cruise Line®.

*Sophia Fiori*



**Shutters**

**SMILE**

Tonight is your last chance for professional portraits! Capture the magic of your vacation at one of our portrait studios and let the memories live.

Visit our professional portrait studios located in the Lobby Atrium, Deck 3, Midship.

5:00 p.m. - 6:00 p.m.

7:15 p.m. - 8:30 p.m.

9:30 p.m. - 10:30 p.m.

*\*Please note that photos are available for viewing on our interactive photo kiosks approximately five hours after being taken and are only available for purchase during this cruise.*

## CELEBRATE THE SEASONS AT SEA

Disney Cruise Line is adding an extra layer of magic with enchanting holiday celebrations. One's a little spooky and the other is very merry! Visit the Onboard Sales Desk today for details about Halloween on the High Seas and Very Merrytime Cruises. Plus, get details about our special onboard booking offer!



## DISNEY VACATION CLUB® GROUP PREVIEW

Want to learn more about taking magical vacations year after year? Please see a Disney Vacation Club representative on Deck 4, Midship, or call 7-2805 from your stateroom phone for more information about our interactive group presentation.

## runDisney® CASTAWAY CAY 5K REGISTRATION (10+)

Sign up today for the runDisney: Castaway Cay 5K! Please visit the Port Adventures Desk or the Guest Services Desk to register at anytime prior to our arrival at Disney's Castaway Cay. Please note that runners must be 10 years of age or older to participate.

## ARR-CADE

Where can you be a ninja, play the guitar like a rock star, race a car down the streets of Tokyo and along the way WIN some great prizes? Arr-cade located Deck 11, Aft where the pirates play.

## Connect@Sea

We are now offering a NEW and improved Internet service to stay connected on your cruise like no other in the industry! Internet packages range from \$0.25 per MB - \$89.00 (1000 MB package). For more information contact your Connect@Sea Expert or Guest Services onboard.

Disney Cruise Line

**PORT ADVENTURES**

Disney's private island Castaway Cay not only offers a terrific family beach day, but many other excursions and rentals to compliment. Snorkeling, bike and float rentals, parasailing plus much more, means that there is something for everyone at Disney's Castaway Cay.

To make your reservation, visit the Port Adventures Desk, Deck 5, Midship.

## SHOPPING

### NEW DISNEY CRUISE LINE COMPASS COLLECTION MERCHANDISE

Visit Sea Treasures and check out the wide selection of merchandise from the new Compass collection. From t-shirts to mugs featuring nautical and Disney Cruise Line® themed icons, commemorate your Disney cruise with one of these great souvenirs. Deck 3, Forward.

### LAST CHANCE TO VISIT THE VISTA GALLERY

Don't miss your last chance to visit the Vista Gallery where you can admire beautiful artwork created by various celebrated artists and featuring some of your favorite Disney characters. From original canvas paintings to smaller print copies, the Vista Gallery offers the opportunity for you to take some of the magic home! Deck 4, Midship.

### CAPTAIN'S SIGNING

Don't miss your chance to meet the Master of the Disney Fantasy! Stop by White Caps today at 1:00 p.m. where you can have your cruise mementos signed by our Captain. Deck 3, Forward.

### STYLISH WATCHES ONBOARD

Whether you need a tool for strict timekeeping or a fun fashion accessory, visit White Caps and browse the wide selection of stylish watches available including popular brands such as Ernst Benz and Shinola. Deck 3, Forward.

### HAIR BRAIDING ONBOARD

Add some flair to your hair when you visit a Disney Cruise Line® hair braiding station! Stop by a station today for more information and to learn all about the available braiding styles. Subject to restrictions and availability. Deck 11, Midship.

## IMPORTANT INFORMATION

### Security Notice

All Guests (including children) who wish to disembark the ship are required to present their Key to the World card at the gangway. A photo ID is also required for those Guests who are 18 years of age or older. Guests under the age of 18 are required to have a parent, guardian or other responsible adult sign an authorization form at the Guest Service Desk if they wish to go ashore unaccompanied or with any adult from another stateroom.

**Sunscreen/Insect Repellent Advisory**  
Use sunscreen first and protect against mosquito borne illnesses by applying insect repellent on top of sunscreen when going ashore.

### Cold and Flu Reminder

Please wash hands frequently and thoroughly, particularly before meals. Contact the Health Center by dialing 7-1923, should anyone in your party become ill.

### Corridor Quiet Hours

As a courtesy to all our Guests, please recognize quiet hallway hours from 10:00 p.m. til 8:00 a.m.

### Inclement Weather

For the safety of all Guests, outdoor events may be changed due to unforeseen weather conditions.

### Environmental Message

With Disney's commitment to the Environment, please refrain from throwing anything over the Ship's side. Thank you!

### No Reserved Seats Policy

As a courtesy to all our Guests, we kindly advise that the saving of seats is not permitted in the Walt Disney Theatre, and the saving of the sun loungers is not permitted on Deck 11, 12, and 13. Items left unattended will be returned to lost and found at Guest Services, Deck 3 Midship.

### Smoking

For the comfort of our guests, the following areas are designated as smoking areas:

- Deck 13, forward, port side by Currents
- Deck 12, aft, port side outdoor area that is accessible through the Meridian Lounge
- Deck 4, aft, port side from 6:00 p.m. to 6:00 a.m. only (all of Deck 4 is non-smoking from 6:00 a.m. to 6:00 p.m.) Smoking is prohibited inside all guest staterooms and on stateroom verandahs. Guest found smoking in their staterooms or on their verandahs will be charged a \$250 stateroom recovery fee.

### Walt Disney Theatre

Theatrical performances may use artificial fog, strobe lights, pyrotechnics and other special effects. For the safety of our performers and the comfort of those around you, the use of any photography, video recording device or any electronic equipment is prohibited.

### Verandah Safety

Please do not leave any combustible materials on your balcony when not present in your stateroom for safety reasons.



Symbol for activities that will be repeated during the cruise

### Youth Activities Open House

—  $\frac{1}{2}$  —

Fold along the dotted lines and take me with you  
so you don't miss any of the fun!

— 1 —

IN THE SPOTLIGHT SERIES

**JUMP UPTI SERIES**

 CLUBHOUSE SERIES



THURSDAY, JUNE 5, 2014 - DAY AT SEA

# BUENA VISTA THEATRE

Deck 4 & 5, Midship

Open Captioning



8:30 a.m.  
Duration:  
1 hr 37 mins  
Rating: PG



10:30 a.m.  
Duration:  
1 hr 25 mins  
Rating: G



5:30 & 8:15 p.m.  
Duration:  
2 hrs 4 mins  
Rating: PG



11:00 p.m.  
Duration:  
1 hr 52 mins  
Rating: PG

## Character Appearances

### MICKEY MOUSE

Deck 4, Balcony  
9:00 a.m., 5:45 p.m.,  
7:45 p.m. & 9:30 p.m.

### DONALD DUCK

Deck 4, Balcony  
9:30 a.m. & 10:00 p.m.

### TINKER BELL

Lobby Atrium (V)  
9:30 a.m. & 10:30 a.m.

### GOOFY

Deck 4, Balcony  
10:00 a.m.

### PRINCESS GATHERING

Lobby Atrium - 11:00 a.m.

### PRINCESS SOFIA

Deck 4, Balcony  
11:15 a.m. & 12:30 p.m.

### PRINCESS MINNIE

Deck 4, Balcony - 12:00 p.m.

### CHARACTER DANCE PARTY

Lobby Atrium - 1:15 p.m.

### CHIP & DALE

Deck 4, Balcony  
4:45 p.m.

### MINNIE MOUSE

Deck 4, Balcony  
5:15 p.m. & 7:15 p.m.

### ARIEL

Lobby Atrium (V)  
7:15 p.m.

### CINDERELLA

Lobby Atrium (V)  
7:45 p.m.

(H) Hallway - (S) Starboard Side - (P) Port Side - (V) Vestibule

Don't forget your Camera to capture those magical moments!

For details of daily Disney character appearances, refer to the character line in your Navigator Grid, or the digital character board in the Lobby Atrium.

## IMPORTANT NUMBERS

Fire/Security: 7-3001  
Medical Emergency: 7-3000  
Health Center: 7-1923

## YOUTH ACTIVITIES THEMED EXPERIENCES

**CLUBHOUSE SERIES**  
focuses on movement and features content which appeals to younger children.

**JUMP UP! SERIES**  
includes large group games & movement-oriented activities.

**IN THE SPOTLIGHT SERIES**  
focuses on children's stage presence with lots of activities and enthusiasm.

**STORYBOOK SERIES**  
is designed with a strong connection to the Disney classic stories.

**CREATE & INVENT SERIES**  
will have a tactile focus allowing children to create and admire their work.

**SOLVE IT! SERIES**  
are less active, but will challenge children with problem/solutions-based activities.

### YOUTH ACTIVITIES OPEN HOUSE

A non-secured program with activities for families, adults and children of all ages to enjoy together.

## SHIP DIRECTORY

### YOUTH ACTIVITIES

DISNEY'S OCEANEER CLUB	DECK 5, MID	9:00 AM - 12:00 MID
DISNEY'S OCEANEER LAB	DECK 5, MID	9:00 AM - 12:00 MID
EDGE	DECK 13, MID	9:00 AM - 1:00 AM
VIBE	DECK 4, FWD	9:00 AM - 2:00 AM
IT'S A SMALL WORLD NURSERY	DECK 5, MID	9:00 AM - 11:30 PM

### POOLS & MORE

\* Children under 12 must have adult supervision in pool areas.

AQUADUCK	DECK 12, MID	9:00 AM - 10:00 PM
AQUALAB	DECK 12, AFT	10:00 AM - 6:00 PM
DONALD'S POOL	DECK 11, MID	9:00 AM - 6:00 PM
		8:00 PM - 10:00 PM
MICKEY'S POOL	DECK 11, MID	6:00 AM - 11:30 PM
MICKEY'S SLIDE	DECK 11, MID	9:00 AM - 6:00 PM
NEMO'S REEF	DECK 11, MID	9:00 AM - 6:00 PM
QUIET COVE POOL (18+)	DECK 11, FWD	6:00 AM - 12:00 MID
SATELLITE FALLS	DECK 13, FWD	6:00 AM - 8:00 PM

### RECREATION

GOLF/SPORTS SIMULATORS	DECK 13, AFT	9:00 AM - 6:00 PM
GOOFY GOLF	DECK 13, AFT	8:00 AM - 10:00 PM
GOOFY'S SPORTS DECK	DECK 13, AFT	8:00 AM - 6:00 PM
MIDSHIP DETECTIVE AGENCY	DECKS 2 & 5, MID	9:00 AM - 10:00 PM
PORT ADVENTURES DESK	DECK 5, MID	10:00 AM - 12:00 PM
		2:00 PM - 5:00 PM
		7:00 PM - 8:30 PM
SENSES FITNESS CENTER (18+)	DECK 11, FWD	6:30 AM - 10:00 PM

### GENERAL INFORMATION

ARR-CADE	DECK 11, AFT	24 HOURS
DISNEY VACATION CLUB	DECK 4, MID	9:00 AM - 11:30 AM
		2:30 PM - 10:00 PM
GUEST SERVICES	DECK 3, MID	24 HOURS
MEDICAL HEALTH CENTER	DECK 1, FWD	9:30 AM - 11:00 AM
		4:30 PM - 7:00 PM
ONBOARD SALES DESK	DECK 4, MID	9:00 AM - 12:00 PM
		2:00 PM - 6:00 PM
		7:30 PM - 10:00 PM
PORT & SHOPPING DESK	DECK 4, MID	
PRELUDES	DECK 3, FWD	2:30 PM - 3:15 PM
		5:45 PM - 6:30 PM
		8:00 PM - 8:45 PM
SENSES SPA AND SALON	DECK 11, FWD	8:00 AM - 10:00 PM
SHUTTERS PHOTO GALLERY	DECK 4, MID	10:00 AM - 11:00 PM
SHUTTERS DIGITAL	DECK 4, MID	24 HOURS

### SHOPPING

BIBBIDI BOBBIDI BOUTIQUE	DECK 5, MID	9:00 AM - 9:00 PM
MICKEY'S MAINSAIL	DECK 3, FWD	9:30 AM - 11:00 PM
QUACKS	DECK 11, MID	10:00 AM - 4:00 PM
SEA TREASURES	DECK 3, FWD	9:30 AM - 11:00 PM
VISTA GALLERY	DECK 4, MID	10:00 AM - 10:00 PM
WHITE CAPS	DECK 3, FWD	9:30 AM - 11:00 PM
WHOZITS & WHATZITS	DECK 11, MID	10:00 AM - 4:00 PM

## DINNER MENU

Animator's Palate: Captain's Gala  
Enchanted Garden: Captain's Gala  
Royal Court: Captain's Gala  
Dining Times: 5:45 p.m. & 8:15 p.m.

## DRINK OF THE DAY

High Tide (Alcoholic)  
Passion Cream Freeze (Non Alcoholic)

## WEATHER FORECAST

Today: Cloudy  
High: 78°F/26°C  
Tomorrow: Cloudy  
High: 80°F/27°C

Evening Attire: Semi Formal

## DINING & LOUNGES

### BREAKFAST

CABANAS CONTINENTAL	DECK 11, AFT	7:00 AM - 7:30 AM
CABANAS	DECK 11, AFT	7:30 AM - 11:30 AM
ENCHANTED GARDEN	DECK 2, MID	8:30 AM - 10:45 AM
ROYAL COURT	DECK 3, MID	8:00 AM - 9:30 AM

### LUNCH

CABANAS	DECK 11, AFT	11:30 AM - 2:00 PM
FILMORE'S FAVORITES	DECK 11, MID	11:00 AM - 6:00 PM
LUIGI'S PIZZA	DECK 11, MID	11:00 AM - 6:00 PM
ROYAL COURT	DECK 3, MID	12:00 PM - 1:30 PM
TOW MATER'S GRILL	DECK 11, MID	11:00 AM - 11:00 PM

### DINNER

ANIMATOR'S PALATE	DECK 3, AFT	5:45 PM & 8:15 PM
ENCHANTED GARDEN	DECK 2, MID	5:45 PM & 8:15 PM
ROYAL COURT	DECK 3, MID	5:45 PM & 8:15 PM
CABANAS TABLE SERVICE	DECK 11, AFT	6:30 PM - 8:30 PM
PALO (18+) (RESERVATIONS REQ. & NON-FEE APPLIES)	DECK 12, AFT	6:00 PM - 8:30 PM
REMY (18+) (RESERVATIONS REQ. & NON-FEE APPLIES)	DECK 12, AFT	6:00 PM - 8:30 PM

### LATE NIGHT SNACKS

LA PIAZZA (18+)	DECK 4, AFT	10:45 PM - 11:45 PM
LUIGI'S PIZZA	DECK 11, MID	9:30 PM - 12:30 AM

### ADDED FEATURES

BEVERAGE STATION	DECK 11, MID	24 HOURS
EYE SCREAM	DECK 11, MID	11:00 AM - 11:00 PM
ROOM SERVICE	DIAL 0	24 HOURS

### ENTERTAINMENT - LOUNGES - BARS

Adults must be 21 and older to consume alcoholic beverages.

BON VOYAGE	DECK 3, MID	10:00 AM - 11:00 PM
COVE BAR (18+)	DECK 11, FWD	10:00 AM - 11:00 PM
COVE CAFE (18+)	DECK 11, FWD	7:00 AM - 12:00 MID
CURRENTS (18+)	DECK 13, FWD	10:00 AM - 11:00 PM
D LOUNGE	DECK 4, MID	SHOWTIMES
FROZONE TREATS	DECK 11, MID	10:00 AM - 10:00 PM
LA PIAZZA (18+ AFTER 9:00 P.M.)	DECK 4, AFT	12:00 PM - 12:00 MID
MERIDIAN (18+)	DECK 12, AFT	10:00 AM - 12:00 MID
O'GILLS PUB (18+ AFTER 9:00 PM)	DECK 4, AFT	12:00 PM - 12:00 MID
OOH LA LA (18+)	DECK 4, AFT	5:30 PM - 12:00 MID
OUTLOOK	DECK 14, MID	
SKYLINE (18+)	DECK 4, AFT	5:30 PM - 12:30 AM
THE TUBE (18+ AFTER 9:00 P.M.)	DECK 4, AFT	9:30 PM - 2:00 AM
VISTA CAFE	DECK 4, MID	7:00 AM - 10:30 PM
WAVES	DECK 12, AFT	10:00 AM - 6:00 PM

Public Health Advisory: Consuming raw or under-cooked meats, poultry, seafood, shellfish, or eggs may increase your risk for food borne illness, especially if you have certain medical condition

### PRINCESS GATHERING

Don't miss your chance to see this Royal gathering today in the Lobby Atrium and don't forget your camera to capture those magical moments.

11:00 a.m.

### CHARACTER DANCE PARTY

Put your dancing shoes on and join some of your favorite Disney Friends in the Lobby Atrium, Deck 3, Midship for fun and dancing.

1:15 p.m.

