

PERSONAL NAVIGATOR

SATURDAY, MAY 10, 2014

Sunrise: 6:12 a.m. Sunset: 6:37 p.m.
Evening Attire: Cruise Casual

Today: Partly Sunny High: 81°F/27°C
Tomorrow: Partly Sunny High: 82°F/28°C

DAY AT SEA

Disney • PIXAR

TOY STORY THE MUSICAL

WALT DISNEY THEATRE
DECK 4, FORWARD
6:15 p.m. & 8:30 p.m.

As a courtesy to all Guests, we kindly advise that the saving of seats is not permitted in the Walt Disney Theatre.

Assistance available at the entrance to the Walt Disney Theatre 30 minutes prior to show time.



Disney WONDER Officers



Staff Captain Grgo Skaramuca

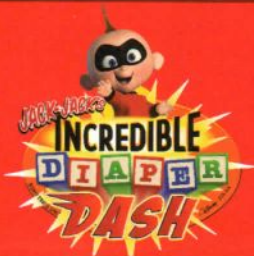
Staff Captain

Joined Disney Cruise Line: 1998

Hometown: Dubrovnik, Croatia

Favorite Character: Goofy

Grgo started his career at sea on cargo ships in 1983, moving to cruise ships in 1986. Grgo embarked the new build Disney Magic in the shipyard in Italy as 1st Navigation Officer, part of the DCL Opening Team in 1998.



Calling all baby Cruisers!
It's time to take to the mat
to see who's the fastest
crawler of the seven seas!

Lobby Atrium,
Deck 3, Midship,
12:30 p.m.

Don't Miss:

Cruise Director's Morning Show

Studio Sea, Deck 4, Midship - 8:30 a.m.

Get your day started with your Cruise Director, Jimmy, and your Assistant Cruise Director, Ashley. Also broadcast live on channel 25-8.

Post Panama Canal Transit Q & A with Captain Ken Puckett

Walt Disney Theatre, Deck 4, Forward - 9:30 a.m.

Join Captain Puckett for this informative question and answer session. Captain Puckett will also review the current program to expand the Panama Canal to accommodate the larger ships of the 21st Century.

Disney's Art of Entertaining: Baked Granny Smith Apples (18+)

Studio Sea, Deck 4, Midship - 10:30 a.m.

Learn to create mouth-watering sweets like a professional pastry chef with easy to follow decadent recipes.

Pacific Pool Party (18+)

Quiet Cove Pool, Deck 9, Forward - 10:15 p.m.

Join us as we transform Quiet Cove into a "night club under the stars" celebrating our arrival into the Pacific.



Book your next cruise onboard and save 10% on prevailing rates as quoted on disneycruise.com. Plus, get an onboard credit and special deposit rate! Visit the Future Cruise Sales Desk for more information.

DINNER MENU

Animator's Palate: World of Flavour
Parrot Cay: World of Flavour
Triton's: World of Flavour

DRINK OF THE DAY

Island Navigator (Alcoholic)
Tutti Frutti (Non Alcoholic)

IMPORTANT NUMBERS

Fire/Security: 7-3001
Medical Emergency: 7-3000
Health Center: 7-1923

ADULT ACTIVITY HIGHLIGHTS

VISTA SPA FITNESS CLASSES & SEMINARS

Sunrise Stretch - Vista Spa Fitness Center - 7:00 a.m.
Tour De Cycle - Vista Spa Fitness Center - 8:30 a.m.
Body Sculpt Boot Camp - Vista Spa Fitness Center - 9:30 a.m.
The Wonders of Acupuncture - Outlook Cafe - 10:15 a.m.
Detox for Health & Weight Loss - Outlook Cafe - 11:00 a.m.
Go Smile Seminar - Outlook Cafe - 2:00 p.m.
Seminar: Shave of All Shaves - Outlook Cafe - 3:15 p.m.
Yoga - Vista Spa Fitness Center - 5:00 p.m.



VISTA SPA

TASTING CLASSES

New World White Wine Tasting (21+) - Cadillac Lounge - 12:00 p.m.
Mixology (21+) - Cadillac Lounge - 2:00 p.m.
Mojito & Caipirinha Tasting (21+) - Cadillac Lounge - 4:00 p.m.
Malt Tasting (21+) - Outlook Cafe - 10:30 p.m.
 Please make reservations for tastings at Guest Services for a nominal fee.
 Tasting Seminars are only for Guests 21 and Older.

BEHIND THE SCENES OF MICKEY'S PHILHARMAGIC FEATURING GEORGE SCRIBNER (18+)

Buena Vista Theatre, Deck 5, Aft - 1:00 p.m.
 Join George Scribner for a behind the scenes look at the creation of this 3D film from concept to installation at Walt Disney World. He will share the early concepts of the attraction, including some little known facts about the show

LIVE PIANO WITH LAURENCE J BLACKLER

Cadillac Lounge, Deck 3, Forward - 7:30, 9:30, 10:30 & 11:30 p.m.
 Join Laurence J Blackler as he plays live piano for your listening pleasure.

VARIETY SHOW: SCOTT ALEXANDER

Walt Disney Theatre, Deck 4, Forward - 10:15 p.m.
 Featuring the Magic and Illusion of Scott Alexander, in this Adult exclusive cabaret style show.

Cruise Highlights: Week 2

Saturday DAY AT SEA
Attire: Cruise Casual

TOY STORY
Walt Disney Theatre
 6:15 p.m. & 8:30 p.m.

Sunday DAY AT SEA
Attire: Semi Formal

DISNEY THEATRICAL
 GAVIN LEE
Walt Disney Theatre
 6:15 p.m. & 8:30 p.m.

Monday DAY AT SEA
Attire: Cruise Casual

SHOWTIME:
 REBECCA & DONOVAN
Walt Disney Theatre
 6:15 p.m. & 8:30 p.m.

Tuesday DAY AT SEA
Attire: Cruise Casual

LET'S GO TO
 THE MOVIES
Walt Disney Theatre
 6:15 p.m. & 8:30 p.m.

Wednesday PUERTO VALLARTA
All Aboard: 8:00 am
All Aboard: 4:00 pm
Attire: Cruise Casual

SHOWTIME:
 WAYNE HOFFMAN
Walt Disney Theatre
 6:15 p.m. & 8:30 p.m.

Thursday CABO SAN LUCAS
All Aboard: 8:00 am
All Aboard: 3:30 pm
Attire: Formal

CREW TALENT SHOW
Walt Disney Theatre
 6:15 p.m. & 8:30 p.m.

Friday DAY AT SEA
Attire: Cruise Casual

DISNEY DREAMS: AN
 ENCHANTED CLASSIC
Walt Disney Theatre
 6:15 p.m. & 8:30 p.m.

Subject to change.

FUN FOR ALL AGES HIGHLIGHTS



FAMILY FUN JACKPOT BINGO

Wavebands, Deck 3, Forward - 10:45 a.m.
 Join your Cruise Staff as we play 4 cash prize games as well as raffle off great Disney Cruise Line prizes! Pre Sales start 15 minutes prior to game.

WII BOWLING CHALLENGE: JIMMY VS CAPTAIN FABIAN Deck Stage, Deck 9, Midship - 11:30 a.m.

Join your Cruise Director Jimmy, SELF-Proclaimed Wii Bowling Champion of the Universe, as he challenges Captain Fabian to a "friendly" game of Wii Bowling. Winner docks the ship in Puerto Vallarta!

Q & A WITH THE STEERING COMMITTEE

Wavebands, Deck 3, Forward - 2:00 p.m.
 Join the Steering Committee for an informal Q&A session.

\$7,000 MEGA JACKPOT BINGO

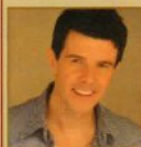
Wavebands, Deck 3, Forward - 4:00 p.m.
 Don't miss your chance to take home big money! 4 CASH prize games and great raffle prizes to be won! Complete the fourth game in 46 numbers or less and win the \$7,000 Mega Jackpot! Pre Sales start 15 minutes prior to game.



SO YOU THINK YOU KNOW YOUR FAMILY?

Studio Sea, Deck 4, Midship - 7:30 p.m.
 This fun-filled family game show is always full of surprises. Find out how well you know, or don't know your family!

FEATURED VARIETY ACTS: WEEK 2



GAVIN LEE

Gavin has recently returned from London where he was playing the Fred Astaire role in *Top Hat* which won best musical at this year's Laurence Olivier awards. Before this he originated the role of Bert in the West End and Broadway productions of *Mary Poppins* for which he was Olivier and Tony award nominated as well as winning a Drama Desk and Theatre World award.



THE ACROBATICS AND MUSIC OF REBECCA & DONOVAN

Rebecca & Donovan have mesmerized audiences internationally, and were a much talked about feature of last summer's UK TV hit "Britain's Got Talent". From Beijing to India, and Monte Carlo to London, both for stage and television their Acrobalance and Aerial Act has wowed millions, and even earned them membership into the Guinness Book of world records. Powerful and gentle, romantic and awe inspiring, this act will keep you amazed!



THE UNIQUE MUSIC AND VISUAL EFFECTS OF AUDIOBODY

During each performance the two members of AudioBody let their habit of one-upping each other steer a spectacle of kaleidoscopic strobes, LED lights, juggling, music, contortion and hilarity. They create and build wacky musical inventions including a 15 foot wide drum set rigged with bungee cords, a button mashing robot, and electronic jumpsuits that create sound effects as well as play music. All of this combined creates moments of thrilling visuals as well as comedic technological mishaps and spectacular disasters.



THE IMPROVISED COMEDY OF IMPROV SHMIMPROV

Improv Shmimprov is improvised comedy as you've never seen it before! We take audience suggestions and then we make up the rest. Shmimprov's show is fast, funny and hugely audience interactive: we may ask an audience member to provide sound effects for a scene, move us like mannequins, and even lend us their cell phone to use their text messages as dialogue. NBC, CBS, The OC Register and audiences everywhere agree "Improv Shmimprov players show Los Angeles how it's done."



THE MAGIC & MIND READING OF WAYNE HOFFMAN

Multi-award winning performer Wayne Hoffman travels the world performing his high-energy show. Ranked one of the top 10 mentalists in the world, Wayne's performance combines body language, human behavior and visual magic that will blow your mind! Recently Wayne was featured on NBC's hit TV show "Phenomenon" seen by millions of viewers on live television. He has also appeared on The Ellen Degeneres Show, TLC, CNN and the Discovery Channel to name a few. Wayne's show is not to be missed!

YOUTH ACTIVITIES HIGHLIGHTS

DINE & PLAY

A convenience for families dining at 8:15 p.m., our Youth Activities Counselors will be available at 9:15 p.m. at the entrance of Triton's, Parrot Cay and Animator's Palate dining rooms to bring registered children to join the fun in the Oceaneer Club and Oceaneer Lab.



Deck 5, Aft (7-18500) 9:00 a.m. - 11:00 p.m.

Infants and Toddlers can enjoy toys and activities at Flounder's Reef Nursery. Reservations are first come, first served so please stop by!



Deck 5, Midship (7-1440) (3 - 12 years old) 9:00 a.m. - 11:00 p.m.

HEFFALUMP HUNTING

11:30 a.m.

Come look for Heffalumps on this fun hunt.

SWINGIN' LIKE TARZAN

7:30 p.m.

Trashin' the camp like Terk, sketching like Jane, sliding like Tarzan, and giving the best jungle yell will be some of the activities for your children in this adventure.



Deck 5, Midship (7-1445) (3 - 12 years old) 9:00 a.m. - 9:30 p.m.

ANIMATION ANTICS

9:15 a.m.

Learn simple animation techniques and then put your new skills to use by drawing some of your favorite Disney Characters.

GAGA BALL

5:00 p.m.

Come take part in this great game as you try to outlast your opponents.



Deck 2, Midship (7-5810) (11 - 14 years old)

10:00 a.m. - 12:00 mid

MARSHMALLOW OLYMPICS

2:00 p.m.

Learn all about this white sugary treat and everything it can do! Build a tower, go flying and test your agility - all with the help of a marshmallow.



Deck 11, Midship (7-1456) (14 - 17 years old)

10:00 a.m. - 2:00 a.m.

CAMP OUT

1:00 a.m.

You will enjoy a camp fire night out under the stars that is filled with games, adventures and lots of crazy surprises.

YOUTH ACTIVITIES OPEN HOUSE

Open House is an opportunity for all to come and participate in a variety of exciting activities and free time in the Oceaneer Club, Oceaneer Lab, Flounder's Reef Nursery, Vibe and Edge throughout the cruise. During these times secured programming will still be offered in the other venue for those looking to check their children into care.

Disney's Oceaneer Club: 9:00 a.m. - 10:00 a.m. **Vibe:** 10:00 a.m. - 12:00 p.m.
Disney's Oceaneer Club: 5:30 p.m. - 7:00 p.m. **Edge:** 10:00 a.m. - 12:00 p.m.
Vibe: 4:00 p.m. - 6:00 p.m. **Edge:** 6:00 p.m. - 8:00 p.m.

BUENA VISTA THEATRE

Feature Movies this Week

SATURDAY - DAY AT SEA

8:30 a.m.	G	Peter Pan	
10:15 a.m.	PG	Frozen	DOLBY 3D
2:15 p.m.	NR	Movie Classic: Citizen Kane	
5:00 p.m.	PG-13	Les Miserables	
8:15 p.m.	PG-13	Les Miserables	
11:15 p.m.	G	Disney Nature: Bears	

SUNDAY - DAY AT SEA

8:30 a.m.	G	Snow White	
10:15 a.m.	PG-13	Captain America: The Winter Soldier	
2:15 p.m.	PG-13	Movie Classic: Rebel without a Cause	
5:00 p.m.	PG-13	Phantom of the Opera	
8:00 p.m.	PG-13	Phantom of the Opera	
11:00 p.m.	PG-13	Captain America: The Winter Soldier	

MONDAY - DAY AT SEA

8:30 a.m.	G	The Jungle Book	
10:15 a.m.	PG	Muppets Most Wanted *	
2:15 p.m.	PG	Movie Classic: Cool Hand Luke	
5:30 p.m.	PG	Frozen: Sing-A-Long	
8:00 p.m.	PG	Frozen: Sing-A-Long	
10:45 p.m.	PG-13	Phantom of the Opera	

TUESDAY - DAY AT SEA

8:30 a.m.	G	Pinocchio	
2:15 p.m.	G	Movie Classic: To Kill A Mockingbird	
5:30 p.m.	PG	Muppets Most Wanted	
8:00 p.m.	PG	Muppets Most Wanted	
10:30 p.m.	PG-13	Thor: The Dark World	

WEDNESDAY - PUERTO VALLARTA

11:00 a.m.	PG	Frozen	
2:00 p.m.	PG-13	Phantom of the Opera	
5:15 p.m.	PG-13	Captain America: The Winter Soldier	
8:00 p.m.	PG-13	Captain America: The Winter Soldier	
10:45 p.m.	PG-13	Les Miserables	

THURSDAY - CABO SAN LUCAS

12:30 p.m.	PG-13	Captain America: The Winter Soldier	DOLBY 3D
3:15 p.m.	PG-13	Saving Mr. Banks	
5:45 p.m.	G	Disney Nature: Bears	
8:00 p.m.	G	Disney Nature: Bears	
10:30 p.m.	PG-13	Saving Mr. Banks	

FRIDAY - DAY AT SEA

8:30 a.m.	G	Sleeping Beauty	
10:15 a.m.	G	Disney Nature: Bears	
12:00 p.m.	PG	Frozen: Sing-A-Long	
2:15 p.m.	NG	Movie Classic: West Side Story	
5:30 p.m.	PG	Million Dollar Arm	
8:00 p.m.	PG	Million Dollar Arm	
10:30 p.m.	PG	Million Dollar Arm	

Subject to change.

MORE TO ENJOY WHILE ONBOARD

BOOK NOW AND SAVE!

To find out more and how to save up to 10% off your next cruise, stop by the Future Cruise Sales Desk, Deck 4, Midship, or call 7-2848.



PORT AND SHOPPING INFORMATION

For all of your Puerto Vallarta and Cabo San Lucas Port and Shopping Information, don't forget to visit the Port Shopping Desk tonight between 7:30 p.m. - 8:30 p.m. on Deck 3, Midship.



DISNEY VACATION CLUB® GROUP PREVIEW

Want to learn more about taking magical vacations year after year? Please see a Disney Vacation Club representative on Deck 4, Midship, or call 7-2805 from your stateroom phone for more information about our interactive group presentation.



VISTA SPA

Deck 9, Forward - Phone: 7-1465

BLISS SPECIAL

Back due to High Demand and today only
Hot Stone Back Massage, Frangipani Scalp Massage, Mini Booster Facial, Collagen Eye Treatment, Pressure Point Foot Massage

75 minutes only \$129 (Plus 18% auto gratuity)

2014 DISNEY CRUISE LINE MERCHANDISE

Step into Mickey's Mates today and commemorate your Disney cruise with a wide selection of 2014 Disney Cruise Line Merchandise.
Mickey's Mates,
Deck 4, Forward.



GET THE PICTURE

Use our kiosks to purchase your GET THE PICTURE! photo disc. No need choose your photos today. All your stateroom photos will be on the disc and you can unlock them from the comfort of your home! Kiosks are located in Shutters, Deck 4, Aft and Deck 3 outside the Promenade Lounge.

**Terms and conditions apply.*

QUARTER MASTERS ARCADE

Demonstrate your cutting expertise at BARBERCUT and win an Ipod Nano or an Ipod Shuffle! Only at Quarter Masters Arcade, located on Deck 9, Midship, where the winners win.

EARLY FLIGHT DEPARTURES

Guests with flights departing San Diego prior to 12:30 p.m. are kindly asked to notify Guest Services located on Deck 3, Midship no later than 12:00 noon Thursday, May 15th.

Connect@Sea

We are now offering a NEW and improved Internet service to stay connected on your cruise like no other in the industry! Internet packages range from \$0.25 per MB - \$89.00 (1000 MB package). For more information contact your Connect@Sea Expert or Guest Services onboard.



The best way to explore our ports of call is through the eyes of a Port Adventure. Puerto Vallarta and Cabo San Lucas still await our much anticipated arrival. Stop by the Port Adventures Desk, Deck 3, Midship, to book one of our many tours still available.

SHOPPING

FRAGRANCE OF THE DAY

Visit Treasure Ketch and check out today's featured fragrance as well as a vast selection of designer name fragrance brands such as Chanel and Flower by Kenzo. Deck 4, Forward.

ART GALLERY

Visit our Art Gallery on Deck 4, Midship from 7:30 p.m. - 9:00 p.m. to view a large selection of Disney art. Giclees on canvas themed pieces from princess movies to your favorite characters in a pirate style!

2014 DISNEY CRUISE LINE MERCHANDISE

Step into Mickey's Mates today and commemorate your Disney cruise with a wide selection of 2014 Disney Cruise Line merchandise. From t-shirts to photo albums and more, you are sure to find a special souvenir for the whole family. Deck 4, Forward.

TIME TO GO WITH MICHAEL KORS WATCHES

Accessories are the exclamation point of an outfit. They are what makes it complete. From Dressed up with classic details through to Practical and Glamorous there is sure to be a timepiece in this collection to complete your look. Collection available in Treasure Ketch.

GUCCI WATCHES

Gucci Timepieces has been creating watches since the early Seventies, combining Swiss precision and Italian style. Recognized for their design, quality and craftsmanship, the many styles of the maison have become classics for men and women. Collection includes G-Frame and the Twirl, Marina Chain and the G-Gucci line and Gucci Coupé. All timepieces present Gucci icons, such as G-shaped bezels, red-green-red straps, or Horsebit clasps. View the collection in Treasure Ketch.

Due to port regulations, when the ship is docked, the stores will remain closed.

IMPORTANT INFORMATION

Security Notice

All Guests (including Children) who wish to disembark or embark the ship are required to present their Key to the World card at the gangway. A photo ID is also required for those Guests who are 18 years of age or older. Guests under the age of 18 are required to have a parent, guardian or other responsible adult sign an authorization form at the Guest Service Desk if they wish to go ashore unaccompanied or with any adult from another stateroom.

Sunscreen/Insect Repellent Advisory

Use sunscreen first and protect against mosquito borne illnesses by applying insect repellent on top of sunscreen when going ashore.

Cold and Flu Reminder

Please wash hands frequently and thoroughly, particularly before meals. Contact the Health Center by dialing 7-1923, should anyone in your party become ill.

Inclement Weather

For the safety of all Guests, outdoor events may be changed due to unforeseen weather conditions.

Corridor Quiet Hours

As a courtesy to all our Guests, please recognize quiet hallway hours from 10:00 p.m. til 8:00 a.m.

Environmental Message

With Disney's commitment to the Environment please refrain from throwing anything over the Ship's side. Thank you.

No Reserved Seats Policy

As a courtesy to all Guests we kindly advise that the saving of seats is not permitted in the Walt Disney Theatre, and the saving of the sun loungers is not permitted on Deck 9 and 10. Items left unattended will be returned to lost and found at Guest Services, Deck 3, Midship.

Smoking

For the comfort of our guests, the following areas are designated as smoking areas:

- Deck 10, forward, Starboard side
- Deck 9, forward, Starboard side at Quiet Cove
- Deck 4, aft, starboard side from 6:00 p.m. to 6:00 a.m. only (all of Deck 4 is non-smoking from 6:00 a.m. to 6:00 p.m.)

Smoking is prohibited inside all guest staterooms and on stateroom verandahs. Guest found smoking in their staterooms or on their verandahs will be charged a \$250 stateroom recovery fee.

Electronic cigarettes may only be used in designated smoking areas.

Walt Disney Theatre

Theatrical performances may use artificial fog, strobe lights, pyrotechnics and other special effects. For the safety of our performers and the comfort of those around you, the use of any photography or video recording device or any electronic equipment is prohibited.

Verandah Safety

Please do not leave any combustible materials on your balcony when not present in your stateroom for safety reasons.

Morning	8:30	8:45	9:00	9:15	9:30	9:45	10:00	10:15	10:30	10:45	11:00	11:15	11:30	11:45	12:00	12:15	12:30	12:45	1:00	1:15	1:30
FUNNEL VISION	Virtual Tours Funnel Vision				Lady and the Tramp (G) Funnel Vision				Wii Bowling Challenge Funnel Vision				Live Music with Dream Funnel Vision								
BUENA VISTA THEATRE	Peter Pan (G) Duration: 1 Hour 45 Minutes				Frozen (PG) DOLBY 3D Duration: 1 Hour 48 Minutes								Behind the Scenes of Mickey's Philharmagic (10+) Buena Vista Theatre								
CHARACTERS									Stitch Gazebo, Dk 9				Mickey & Donald Gazebo, Dk 9		Goofy & Pluto Gazebo, Dk 9		Minnie & Daisy Gazebo, Dk 9				
FUN FOR ALL AGES	Cruise Director's Morning Show Studio Sea		Post Panama Canal Transit Q & A with Captain Ken Puckett Walt Disney Theatre				Bingo Pre Sales		Family Fun Jackpot BINGO Wavebands		Wii Bowling Challenge: Jimmy vs. Captain Fabian Deck Stage		BINGO Lobby Atrium		Dance Class - Tango With Chris and Natalie Wavebands						
	Toddler Time for Families Flounder's Reef		Who Am I? Promenade Lounge		Basketball 3 Point Competition Wide World of Sports Deck		Cruisin' for Trivia Promenade Lounge		Craft: Animal Masks Promenade Lounge		Boat Building Check In Promenade Lounge		Animation: Pluto Animator's Palate								
ADULTS	Friends of Bill W. Outlook Cafe		Crafts: Photo Frames Animator's Palate		Wonders of Acupuncture Outlook Cafe		Disney's Art of Entertaining: Baked Granny Smith Apples Studio Sea		Disney's Art of Entertaining: Olive Oil and Balsamic Vinegar Studio Sea		Cruise Staff Lunch Triton's		Behind the Scenes of Mickey's Philharmagic Featuring George Scribner Buena Vista Theatre								
	Walk A Mile Preludes		Boot Camp Vista Spa Fitness Center																		
VIBE 14-17 YEARS OLD					Youth Activities Open House				Coffee Break				Video Game Challenge		Ship Factor						
EDGE 11-14 YEARS OLD					Youth Activities Open House								Ship Factor								
OCEANEER LAB 3-12 YEARS OLD	Animation Antics				Captain Puckett Panama Talk				Homework Help				Lunch								
OCEANEER CLUB 3-12 YEARS OLD	Youth Activities Open House				Relay Games				Heffalump Hunting				Lunch								
	Where's Tink?																				
Afternoon	1:45	2:00	2:15	2:30	2:45	3:00	3:15	3:30	3:45	4:00	4:15	4:30	4:45	5:00	5:15	5:30	5:45	6:00	6:15	6:30	6:45
FUNNEL VISION	Fun in the Sun Funnel Vision		Pool Side Jams with Cruise Staff DJ Funnel Vision				Aladdin (G) Funnel Vision				Tangled (PG) Funnel Vision										
BUENA VISTA THEATRE	Movie Classic: Citizen Kane Duration: 1 Hour 59 Minutes						Les Miserables (PG-13) Duration: 2 Hours 38 Minutes														
CHARACTERS	Mickey & Pluto Gazebo, Dk 9	Chip & Dale Gazebo, Dk 9	Goofy & Donald Gazebo, Dk 9					Hook & Smee Lobby Atrium (P)				Mickey Lobby Atrium (P)									
									Jake Dk 4, Mid				Sofia Dk 4, Mid								
FUN FOR ALL AGES	Steering Committee Q & A Wavebands		Disney Movie Trivia Promenade Lounge		Bingo Pre Sales		\$7,000 Mega Jackpot BINGO Wavebands		Live Music with Roberto & Daria Lobby Atrium		DJ Dance Request Promenade Lounge		TOY STORY THE MUSICAL Walt Disney Theatre								
	The Masters: Golf Putting Lobby Atrium		Crafts: Origami Creations Animator's Palate		Cruisin' for Trivia Promenade Lounge		Foosball Wide World Of Sports														
ADULTS	Live Guitar with Mike Archer Quiet Cove Pool		Live Guitar with Mike Archer Quiet Cove Pool		Know Your Logos Trivia Diversions		Wii-bledon Diversions		Live Guitar with Mike Archer Cadillac Lounge												
	Mixology (21+) Cadillac Lounge		Shave of All Shaves Outlook Cafe		Mojito & Caipirinha Tasting (21+) Cadillac Lounge		Walk A Mile Preludes														
VIBE 14-17 YEARS OLD	Ship Factor		Marshmallow Olympics		Youth Activities Open House		Craft Corner														
EDGE 11-14 YEARS OLD	Marshmallow Olympics		Homework Help		Chillin' in Edge		Youth Activities Open House														
OCEANEER LAB 3-12 YEARS OLD	Float Fun Trivia		Lava Flow		GAGA Ball		Dinner in Disney's Oceaneer Lab														
OCEANEER CLUB 3-12 YEARS OLD	Nemo's Coral Reef Adventure		King Triton's Royal Court		Picture This		Youth Activities Open House														
Evening	7:00	7:15	7:30	7:45	8:00	8:15	8:30	8:45	9:00	9:15	9:30	9:45	10:00	10:15	10:30	10:45	11:00	11:15	11:30	11:45	12:00
FUNNEL VISION	The Incredibles (PG) Funnel Vision				Remember the Titans (PG) Funnel Vision																
BUENA VISTA THEATRE	Les Miserables (PG-13) Duration: 2 Hours 38 Minutes				Disney Nature: Bears (G) Duration: 1 Hour 25 Minutes																
CHARACTERS	Belle Lobby Atrium (P)	Suzi & Perla Lobby Atrium (P)	Cinderella Lobby Atrium (P)				Cpt. Hook Lobby Atrium (P)														
	Rapunzel Dk 4, Mid	Ariel Dk 4, Mid	Sofia Dk 4, Mid				Jake Dk 4, Mid														
FUN FOR ALL AGES	Pin Trading Station Mickey's Mates	So You Think You Know Your Family? Studio Sea		TOY STORY THE MUSICAL Walt Disney Theatre		Game Show: The Wheel Promenade Lounge		Wii Home Run Derby Promenade Lounge													
	DJ Dance Request Promenade Lounge						Live Music with Roberto & Daria Lobby Atrium														
ADULTS	Live Guitar with Mike Archer Cadillac Lounge				Pacific Pool Party Quiet Cove Pool																
	Live Piano with Laurence J Blackler Cadillac Lounge				Swing Time with Laurence Cadillac Lounge				Variety: Scott Alexander Walt Disney Theatre		Music Video Dance Party Wavebands										
VIBE 14-17 YEARS OLD	Cards Tournament		Disney Scene It		Chillin' in Vibe		Video Game Challenge		Gender Wars												
EDGE 11-14 YEARS OLD	Youth Activities Open House		Game Challenge		Magic Show		Bingo		Camp Out												
OCEANEER LAB 3-12 YEARS OLD	Pathfinders		Marshmallow Olympics				Coast to Coast Character Camp Out Limited Availability														
OCEANEER CLUB 3-12 YEARS OLD	Swingin' Like Tarzan				Cartoon Time		Elephant Soccer														

Symbol for activities that will be repeated during the cruise



Fold along the dotted lines and take me with you so you don't miss any of the fun!



IN THE SPOTLIGHT SERIES
SOLVE IT! SERIES

JUMP UP! SERIES
CREATE & INVENT SERIES
OPEN HOUSE

CLUBHOUSE SERIES
STORYBOOK SERIES

SATURDAY, MAY 10, 2014 - DAY AT SEA

BUENA VISTA THEATRE

Deck 5, Aft

DOLBY 3D



8:30 a.m.
Duration:
1 hr 45 mins
Rating: G



10:15 a.m.
Duration:
1 hr 48 mins
Rating: PG



2:15 p.m.
Duration:
1 hr 59 mins
Rating: PG



5:00 p.m.
& 8:15 p.m.
Duration:
2 hrs 38 mins
Rating: PG-13



11:15 p.m.
Duration:
1 hr 25 mins
Rating: G

Character Appearances

STITCH
Gazebo, Dk 9 - 11:45 a.m.

MICKEY & DONALD
Gazebo, Dk 9 - 12:15 p.m.

GOOFY & PLUTO
Gazebo, Dk 9 - 12:45 p.m.

MINNIE & DAISY
Gazebo, Dk 9 - 1:15 p.m.

MICKEY & PLUTO
Gazebo, Dk 9 - 1:45 p.m.

CHIP & DALE
Gazebo, Dk 9 - 2:15 p.m.

GOOFY & DONALD
Gazebo, Dk 9 - 2:45 p.m.

JAKE - THE NEVERLAND PIRATE
Deck 4, Midship
5:15 p.m. & 10:15 p.m.

CAPTAIN HOOK & MR SMEE
Lobby Atrium (P) - 5:15 p.m.

PRINCESS SOFIA
Deck 4, Midship
5:45 p.m. & 9:45 p.m.

MICKEY MOUSE
Lobby Atrium (P) - 5:45 p.m.

RAPUNZEL
Deck 4, Midship - 7:15 p.m.

BELLE
Lobby Atrium (P) - 7:15 p.m.

SUZY & PERLA
Lobby Atrium (P) - 7:45 p.m.

ARIEL
Deck 4, Midship - 7:45 p.m.

CINDERELLA, SUZY & PERLA
Lobby Atrium (P) - 9:45 p.m.

CAPTAIN HOOK
Lobby Atrium (P) - 10:15 p.m.

(P) - Port Side (S) - Starboard Side

Don't forget your Camera to capture those Magical Moments!

Check here each day for all of today's Character Appearances or refer to the Character Board in the Lobby Atrium.

Meet-and-Greets will be advertised for the length of time the line will be open. To avoid disappointment, please meet at start time of appearances.

YOUTH ACTIVITIES THEMED EXPERIENCES

CLUBHOUSE SERIES
focuses on movement and features content which appeals to younger children.

STORYBOOK SERIES
is designed with a strong connection to the Disney classic stories.

JUMP UP! SERIES
includes large group games & movement-oriented activities.

CREATE & INVENT SERIES
will have a tactile focus allowing children to create and admire their work.

IN THE SPOTLIGHT SERIES
focuses on children's stage presence with lots of activities and enthusiasm.

SOLVE IT! SERIES
are less active, but will challenge children with problem/solutions-based activities.

YOUTH ACTIVITIES OPEN HOUSE

Activities for families, adults and children of all ages to enjoy together.

SHIP DIRECTORY

YOUTH ACTIVITIES

DISNEY'S OCEANEER CLUB	DECK 5, MID	9:00 AM - 11:00 PM
DISNEY'S OCEANEER LAB	DECK 5, MID	9:00 AM - 9:30 PM
EDGE	DECK 2, MID	10:00 AM - 12:00 MID
VIBE	DECK 11, MID	10:00 AM - 2:00 AM
FLOUNDER'S REEF NURSERY	DECK 5, AFT	9:00 AM - 11:00 PM

POOLS

Children under 12 years of age must have adult supervision in all pools.

GOOFY'S POOL	DECK 9, MID	9:00 AM - 6:00 PM 7:00 PM - 10:00 PM
MICKEY'S POOL	DECK 9, AFT	8:00 AM - 10:00 PM
MICKEY'S SLIDE	DECK 9, AFT	9:00 AM - 5:00 PM
MICKEY'S SPLASH ZONE	DECK 9, AFT	8:00 AM - 8:00 PM
QUIET COVE POOL (18+)	DECK 9, FWD	6:00 AM - 12:00 MID

RECREATION

PORT ADVENTURES DESK	DECK 3, MID	9:00 AM - 12:00 PM 1:00 PM - 5:00 PM 7:00 PM - 8:30 PM
VISTA FITNESS CENTER (18+)	DECK 9, FWD	6:00 AM - 10:00 PM
WIDE WORLD OF SPORTS DECK	DECK 10, FWD	24 HOURS

GENERAL INFORMATION

BUENA VISTA THEATRE	DECK 5, AFT	SHOWTIMES
DISNEY VACATION CLUB DESK	DECK 4, MID	9:00 AM - 2:00 PM 6:00 PM - 10:00 PM
FUNNEL VISION	DECK 9, MID	SHOWTIMES
GUEST SERVICES	DECK 3, MID	24 HOURS
HAIR BRAIDING	DECK 9, MID	
MEDICAL HEALTH CENTER	DECK 1, FWD	9:30 AM - 11:00 AM 4:30 PM - 7:00 PM
ONBOARD SALES DESK	DECK 4, MID	9:00 AM - 11:30 AM 3:30 PM - 6:00 PM 7:30 PM - 8:30 PM
PORT & SHOPPING DESK	DECK 3, MID	7:30 PM - 8:30 PM
PRELUDES	DECK 4, FWD	5:45 PM - 6:15 PM 8:00 PM - 8:30 PM
QUARTER MASTERS (ARCADE)	DECK 9, MID	24 HOURS
SHUTTERS PHOTO GALLERY	DECK 4, AFT	10:30*AM - 10:30 PM
VISTA SPA AND SALON	DECK 9, FWD	8:00 AM - 10:00 PM
WALT DISNEY THEATRE	DECK 4, FWD	SHOWTIMES

SHOPPING

ART GALLERY	DECK 4, MID	7:00 PM - 9:00 PM
MICKEY'S MATES	DECK 4, FWD	9:00 AM - 10:30 PM
RADAR TRAP (DUTY FREE)	DECK 3, FWD	6:00 PM - 10:30 PM
TREASURE KETCH	DECK 4, FWD	9:00 AM - 10:30 PM

IMPORTANT NUMBERS

Fire/Security: 7-3001
Medical EMERGENCY: 7-3000
Health Center: 7-1923

DINNER MENU

Animator's Palate: World of Flavor
Parrot Cay: World of Flavor
Triton's: World of Flavor
Dining Times: 5:45pm & 8:15pm

DRINK OF THE DAY

Island Navigator (Alcoholic)
Tutti Frutti (Non - Alcoholic)

WEATHER FORECAST

Today: Partly Sunny
High: 81°F/27°C
Tomorrow: Partly Sunny
High: 82°F/28°C

DINING & LOUNGES

BREAKFAST

BEACH BLANKET BUFFET	DECK 9, AFT	7:00 AM - 10:45 AM
GOOFY'S GALLEY	DECK 9, AFT	6:30 AM - 9:00 AM
TRITON'S (À-LA CARTE)	DECK 3, MID	8:00 AM - 9:30 AM

LUNCH

BEACH BLANKET BUFFET	DECK 9, AFT	12:00 PM - 2:00 PM
GOOFY'S GALLEY	DECK 9, AFT	10:45 AM - 7:00 PM
PARROT CAY	DECK 3, AFT	12:15 PM - 1:30 PM
PINOCCHIO'S PIZZERIA	DECK 9, MID	10:45 AM - 6:00 PM
PLUTO'S DOG HOUSE	DECK 9, AFT	10:45 AM - 6:00 PM
TRITON'S	DECK 3, MID	12:00 PM - 1:30 PM

DINNER

ANIMATOR'S PALATE	DECK 4, AFT	5:45 PM & 8:15 PM
PARROT CAY	DECK 3, AFT	5:45 PM & 8:15 PM
TRITON'S	DECK 3, MID	5:45 PM & 8:15 PM
PALO (18+)	DECK 10, AFT	6:00 PM - 9:00 PM
BEACH BLANKET (À-LA CARTE)	DECK 9, AFT	6:30 PM - 8:30 PM
PLUTO'S DOG HOUSE	DECK 9, AFT	6:00 PM - 9:30 PM

LATE NIGHT SNACKS

DIVERSIONS	DECK 3, FWD	11:00 PM - 12:00 MID
ICE CREAM AT GOOFY'S GALLEY	DECK 9, AFT	7:00 PM - 12:00 MID
PINOCCHIO'S PIZZERIA	DECK 9, MID	9:30 PM - 12:00 MID
PROMENADE LOUNGE	DECK 3, AFT	11:00 PM - 12:00 MID

ADDED FEATURES

BEVERAGE STATION	DECK 9, AFT, PORT SIDE	24 HOURS
ROOM SERVICE	DIAL 6801 OR 6802	24 HOURS

ENTERTAINMENT - LOUNGES - BARS

Adults must be 21 and older to consume alcoholic beverages.

CADILLAC LOUNGE (18+)	DECK 3, FWD	5:30 PM - 12:00 MID
COVE CAFE (18+)	DECK 9, MID	6:30 AM - 12:00 MID
DIVERSIONS (18+ AFTER 9:00 PM)	DECK 3, FWD	11:00 AM - 1:00 PM 3:30 PM - 12:00 MID
INTERNET CAFE	DECK 3, AFT	24 HOURS
OUTLOOK CAFE (18+)	DECK 10, MID	9:00 AM - 12:00 MID
PINOCCHIO'S PIZZERIA	DECK 9, MID	9:30 AM - 12:00 MID
PLUTO'S DOG HOUSE	DECK 9, AFT	10:30 AM - 6:00 PM
PRELUDES	DECK 4, FWD	5:45 PM - 6:15 PM 8:00 PM - 8:30 PM
PROMENADE LOUNGE	DECK 3, AFT	8:00 AM - 12:00 MID
SIGNALS (18+)	DECK 9, FWD	9:30 AM - 12:00 MID
STUDIO SEA	DECK 4, MID	SHOWTIMES
WAVEBANDS (18+)	DECK 3, FWD	7:30 PM - 2:00 AM

Public Health Advisory: Consuming raw or under-cooked meats, poultry, seafood, shellfish, or eggs may increase your risk for food borne illness, especially if you have certain medical condition