

# PERSONAL NAVIGATOR

## WALT DISNEY THEATRE

SATURDAY, MAY 3, 2014

Sunrise: 6:51 a.m. Sunset: 7:58 p.m.

Evening Attire: Cruise Casual

All Ashore: Approx: 7:15 a.m.

All Aboard: 4:45 p.m.

Today: Partly Sunny High: 81°F/27°C  
Tomorrow: Partly Sunny High: 81°F/27°C

KEY WEST, FLORIDA

## SHOWTIME TONIGHT

featuring the comedy & ventriloquism of

# Lynn Trefzger

WALT DISNEY THEATRE

Deck 4, Forward

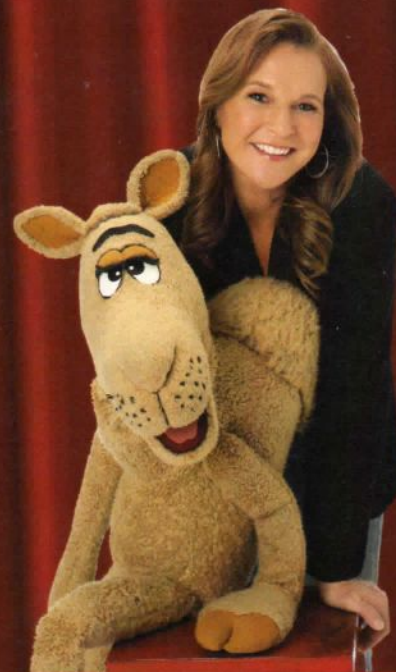
6:15 p.m. & 8:30 p.m.



As a courtesy to all Guests, we kindly advise that the saving of seats is not permitted in the Walt Disney Theatre.



Assistance available at the entrance to the Walt Disney Theatre 30 minutes prior to show time.



## Key West Port Information


The U.S. government acquired Key West from Spain in the early 1800s. During those days, most of the isolated islanders made their living as wreckers and pirates, diving for the booty from ships that wrecked on the coral reefs offshore.

In the early 1930's Key West was recognized as a resort town and hotels, restaurants, bars sprang up around the island. For about 6 months business was wonderful until a hurricane tore up the railroad and rendered the island helpless.

The State of Florida and the Federal Government took over and began the work of rehabilitation, particularly directed toward development of tourist facilities and attractions.

The number one business here is tourism and a laid back kind of fun. But only in Key West does the sun shine the brightest when it sets.

Everyone gathers for the never planned, always varied Sunset Celebration on the Mallory Dock. Once the sun is safely tucked away by jugglers, mimes, musicians and street artists, the city moves to a different beat.



**FAMILY SUPERSTAR KARAOKE**

Be a singing sensation  
when you and your family  
take to the stage  
and sing along to your  
favorite song.

*Studio Sea,  
Deck 4, Midship,  
7:30 p.m.*

## Don't Miss:

### Know It All Trivia (18+)

*Diversions, Deck 3, Forward - 3:30 p.m.*

Do you think you Know it all? Put yourself to the test as your Club Host, pushes the limits of your knowledge at Know it All Trivia.

### Disney Trivia

*Promenade Lounge, Deck 3, Aft - 4:00 p.m.*

Navigate your way through a round of questions to test how much you really know about Disney.

### Disney Disco

*Studio Sea, Deck 4, Midship - 9:30 p.m.*

Join your Cruise Staff as they play some of your favorite Disco tunes.

### 80's Flashback (18+)

*Wavebands, Deck 3, Forward - 11:00 p.m.*

The 80's are back! Join your Cruise Staff team, in testing your 80's knowledge in this high energy 80's revival.



### TIME ZONE CHANGE

Remember to turn your clocks  
**BACK 1 HOUR** upon retiring on  
SATURDAY evening, or first thing  
SUNDAY morning.

## Disney Cruise Line PORT ADVENTURES

Please check your tour tickets for meeting times and locations.  
Visit the Port Adventures Desk, Deck 3, Midship for any questions.

## DINNER MENU

Animator's Palate: Taste of the Caribbean  
Parrot Cay: Taste of the Caribbean  
Triton's: Taste of the Caribbean

## DRINK OF THE DAY

Key Lime Margarita (Alcoholic)  
Mint Tea Fruit Punch (Non Alcoholic)

## IMPORTANT NUMBERS

Fire/Security: 7-3001  
Medical Emergency: 7-3000  
Health Center: 7-1923



# ADULT ACTIVITY HIGHLIGHTS



**VISTA SPA FITNESS CLASSES & SEMINARS**  
*Sunrise Stretch* - Vista Spa Fitness Center - 7:00 a.m.  
*Yoga* - Vista Spa Fitness Center - 5:00 p.m.

## COFFEE MINGLE

*Cove Cafe, Deck 9, Midship - 11:15 a.m.*

Join your fellow guests for an informal coffee mingle.

## INFORMAL BRIDGE PLAY

*Diversions, Deck 3, Forward - 1:45 p.m.*

Join some of your fellow Guests for some informal Bridge play.

## KNOW IT ALL TRIVIA

*Diversions, Deck 3, Forward - 3:30 p.m.*

Do you think you Know it all? Put yourself to the test as your Club Host pushes the limits of your knowledge at Know it All Trivia.

## SPORTS TRIVIA

*Diversions, Deck 3, Forward - 5:00 p.m.*

Join us as we test your knowledge against your fellow Guests at our Sports Trivia.

## LIVE PIANO WITH LAURENCE J BLACKLER

*Cadillac Lounge, Deck 3, Forward - 7:30, 9:30, 10:30 & 11:30 p.m.*

Join Laurence J Blackler as he plays live piano for your listening pleasure.

## ADULT EXCLUSIVE OPEN HOUSE

*Disney's Oceaneer Lab, Deck 5, Midship - 10:30 p.m.*

Come and join us in the Youth Activities spaces for some specially reserved activities for all of you that are 18 and up. You can turn into a child again as you experience the magic of some fun activities.

## 80'S FLASHBACK

*Wavebands, Deck 3, Forward - 11:00 p.m.*

The 80's are back! Join your Cruise Staff team, in testing your 80's knowledge in this high energy 80's revival.

# FUN FOR ALL AGES HIGHLIGHTS

## FAMILY CRAFTS

*Diversions, Deck 3, Forward - 10:30 a.m.*

*Promenade Lounge, Deck 3, Aft - 2:00 p.m.*

Create a fun souvenir with your Cruise Staff that is yours to keep.

## WHO AM I?

*Diversions, Deck 3, Forward - 1:00 p.m.*

Join your Cruise Staff in a fun and hilarious game where our panel has to guess who they are.

## WII CHALLENGE

*Diversions, Deck 3, Forward - 3:00 p.m.*

Come and join us for a friendly Wii competition.

## DISNEY TRIVIA

*Promenade Lounge, Deck 3, Aft - 4:00 p.m.*

Navigate your way through a round of questions to test how much you really know about Disney.

## FAMILY SUPERSTAR KARAOKE

*Studio Sea, Deck 4, Midship - 7:30 p.m.*

Join your Cruise Staff in Studio Sea tonight and sing along to your favorite song - fun for everyone.

## GAME SHOW: THE WHEEL

*Wavebands, Deck 3, Forward - 7:30 p.m.*

A special version of this popular TV game show.

## DISNEY DISCO

*Studio Sea, Deck 4, Midship - 9:30 p.m.*

Join your Cruise Staff as they play some of your favorite Disco tunes.





# YOUTH ACTIVITIES HIGHLIGHTS

## DINE & PLAY

A convenience for families dining at 8:15 p.m., our Youth Activities Counselors will be available at 9:15 p.m. at the entrance of Triton's, Parrot Cay and Animator's Palate dining rooms to bring registered children to join the fun in the Oceaneer Club and Oceaneer Lab.



**Deck 5, Aft (7-18500) 7:00 a.m. - 11:00 p.m.**

Infants and Toddlers can enjoy toys and activities at Flounder's Reef Nursery. Reservations are first come, first served so please stop by!



**Deck 5, Midship (7-1440) 7:00 a.m. - 12:00 mid**  
(3 - 12 years old)

## SWINGIN' LIKE TARZAN

10:00 a.m.

Trashin' the camp like Terk, sketching like Jane, sliding like Tarzan, and giving the best jungle yell will be some of the activities for your children in this adventure.

## LET'S BUILD A FORT

3:15 p.m.

Have fun with your new friends making an awesome fort in the Oceaneer Club!



**Deck 5, Midship (7-1445) 9:00 a.m. - 10:30 p.m.**  
(3 - 12 years old)

## PISTON CUP CHALLENGE

1:45 p.m.

It's Dinoco time and you're part of the pit crew! Design your own race car and see if you've got what it takes to end up in the Winner's Circle!

## MARSHMALLOW OLYMPICS

9:15 p.m.

Learn all about this white sugary treat and everything it can do! Build a tower, go flying and test your agility - all with the help of a marshmallow.



**Deck 2, Midship (7-5810) 10:00 a.m. - 1:00 a.m.**  
(11 - 14 years old)

## HOOP IT UP!

2:15 p.m.

Come play a fun game of Hoop It Up! with your new friends, who will be the ultimate winners?

## GENDER WARS

10:00 p.m.

Join us as we find out who really are the king or queen of the castle.



**Deck 11, Midship (7-1456) 11:00 a.m. - 12:00 mid**  
(14 - 17 years old)

## FLOAT FUN TRIVIA

2:30 p.m.

How well do you know the Disney Wonder? With a Coke Float as your reward, everyone is in the trivia spirit.

## SCAVENGER HUNT

6:15 p.m.

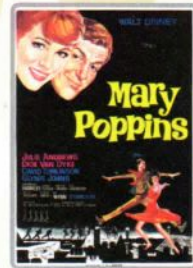
A little friendly competition exploring the ship; see if you can solve the clues and finish first.

# BUENA VISTA THEATRE

## Deck 5, Aft Today's Movies



11:00 a.m.  
Duration: 2 hrs 5 mins  
Rating: PG-13



2:00 p.m.  
Duration: 2 hrs 19 mins  
Rating: G

**DOLBY 3D**



5:30 p.m. & 8:00 p.m.  
Duration: 1 hr 52 mins  
Rating: PG



10:30 p.m.  
Duration: 1 hr 51 mins  
Rating: PG-13

## The Wheel



## FAMILY GAME SHOW

A special version of this popular TV game show.

**Wavebands,  
Deck 3, Forward,  
7:30 p.m.**



## ADULT VARIETY ACT

Featuring the Comedy & Juggling of Michael Holly, as he entertains you in this adult exclusive show.

**Walt Disney Theatre (18+),  
Deck 4, Forward,  
10:30 p.m.**

## YOUTH ACTIVITIES OPEN HOUSE

Open House is an opportunity for all to come and participate in a variety of exciting activities and free time in the Oceaneer Club, Oceaneer Lab, Flounder's Reef Nursery, Vibe and Edge throughout the cruise. During these times secured programming will still be offered in the other venue for those looking to check their children into care.

**Disney's Oceaneer Lab:** 9:00 a.m. - 1:00 p.m. **Edge:** 10:00 a.m. - 12:00 p.m.  
**Vibe:** 11:00 a.m. - 12:00 p.m. **Edge:** 6:00 p.m. - 8:00 p.m.  
**Vibe:** 4:00 p.m. - 6:00 p.m.



# MORE TO ENJOY WHILE ONBOARD

## NEW IN 2015!

Chart a magical new course for northern Europe - explore Norwegian fjords, Iceland and the Faroe Islands - steeped in Viking History from steaming geysers to scenic mountain ranges. Visit the Onboard Sales Desk for more information.



## PORT AND SHOPPING INFORMATION

Do not miss the savings in Key West! Now is your chance to collect that perfect piece of tanzanite, or upgrade to the diamond you've always dreamt of customs exempt! See Alyssa at her desk between 8:00 a.m. - 9:00 a.m., Deck 3, Midship, for last minute Key West shopping advice, VIP cards and shopping maps!

## DISNEY VACATION CLUB® GROUP PREVIEW

Want to learn more about taking magical vacations year after year? Please see a Disney Vacation Club representative on Deck 4, Midship, or call 7-2805 from your stateroom phone for more information about our interactive group presentation.



## VISTA SPA

Deck 9, Forward - Phone: 7-1465

## LADIES AND GENTS TREAT

All ladies and gents are invited to spend a day in the spa. Get spoiled with a 50 minutes hands on treatment that includes 25 mins back massage and 25 mins hydrating booster spa facial and an hour relaxation in the Rainforest. Today Only for only \$99

## 2014 DISNEY CRUISE LINE MERCHANDISE

Step into Mickey's Mates today and commemorate your Disney cruise with a wide selection of 2014 Disney Cruise Line Merchandise. Mickey's Mates, Deck 4, Forward.



## Shutters PHOTO BOOK!

Create a personalized storybook of your cruise with up to 30 of your professional photos, plus beautiful shots of the ship and interiors. Customize your book in minutes using our Interactive Photo Kiosks on Decks 3 and 4. Orders need to be edited and placed before 9 p.m. on last night of the cruise.

Visit Shutters on Deck 4, Aft, for details.

*\*Offer valid per stateroom only.*

*Photos captured on your vacation are only available for purchase during this cruise.*

## QUARTER MASTERS ARCADE

Can you unlock the Grand MASTER KEY? Challenge yourself and discover the rewards that await you including cool Headphones, Underwater Cameras and Disney Princesses Prize Pack, come over to Deck 9, Midship, Quarter Masters Arcade and you could win a treasure.

## EARLY FLIGHT DEPARTURES

Guests with flights departing prior to 12:30 p.m. are kindly asked to notify Guest Services located on Deck 3, Midship, no later than 12:00 noon Thursday, May 15th.

## Connect@Sea

We are now offering a NEW and improved Internet service to stay connected on your cruise like no other in the industry! Internet packages range from \$0.25 per MB - \$89.00 (1000 MB package). For more information contact your Connect@Sea Expert or Guest Services onboard.



Welcome to the Southernmost point of the United States! It's not too late to plan your adventure for today. Why not explore "President Truman's Key West" or tour the old town via trolley or conch train. Before heading home, explore Miami with one of our debarkation port adventures.

Our team at the Port Adventures Desk, Deck 3, Midship, is on standby to help you plan your day.

## SHOPPING

## FRAGRANCE OF THE DAY

Stop by Treasure Ketch to test our selected fragrance today! Deck 4, Forward.

## "TAX FREE SHOPPING? YES, PLEASE!"

That's right! Do all of your tax and duty free shopping onboard by visiting Mickey's Mates and Treasure Ketch on Deck 4, Forward, and Radar Trap on Deck 3, Forward.

## MARC JACOBS WATCHES

From sheik elegance to classic thru to everyday wear there is a Marc Jacobs watch to match your lifestyle. Created with passion and designed to perfection these timepieces make that ultimate statement. Marc Jacobs Collection available in Treasure Ketch.

## CHAMILIA JEWELRY

Create and personalize your own Chamilia Bracelet. Choose from a selection of sterling silver beads with many of them featuring your favorite Disney Characters! Available in Treasure Ketch.

## INTRODUCING DISNEY INSPIRED JEWELRY BY SOPHIA FIORI

Sophia Fiori, one of the world's leading designers of diamond jewelry, is introducing their new Disney inspired diamond jewelry collection. Available now onboard for a limited time, stop by Treasure Ketch to view how Sophia Fiori makes some of your favorite Disney icons shine. Treasure Ketch, Deck 4, Forward.

Due to port regulations, when the ship is docked, the stores will remain closed.

DW1130 05-01-2014 ©DISNEY

## IMPORTANT INFORMATION

### Security Notice

All Guests (including Children) who wish to disembark or embark the ship are required to present their Key to the World card at the gangway. A photo ID is also required for those Guests who are 18 years of age or older. Guests under the age of 18 are required to have a parent, guardian or other responsible adult sign an authorization form at the Guest Service Desk if they wish to go ashore unaccompanied or with any adult from another stateroom.

**Sunscreen/Insect Repellent Advisory**  
Use sunscreen first and protect against mosquito borne illnesses by applying insect repellent on top of sunscreen when going ashore.

### Cold and Flu Reminder

Please wash hands frequently and thoroughly, particularly before meals. Contact the Health Center by dialing 7-1923, should anyone in your party become ill.

### Inclement Weather

For the safety of all Guests, outdoor events may be changed due to unforeseen weather conditions.

### Corridor Quiet Hours

As a courtesy to all our Guests, please recognize quiet hallway hours from 10:00 p.m. till 8:00 a.m.

### Environmental Message

With Disney's commitment to the Environment please refrain from throwing anything over the Ship's side. Thank you.

### No Reserved Seats Policy

As a courtesy to all Guests we kindly advise that the saving of seats is not permitted in the Walt Disney Theatre, and the saving of the sun loungers is not permitted on Deck 9 and 10. Items left unattended will be returned to lost and found at Guest Services, Deck 3, Midship.

### Smoking

For the comfort of our guests, the following areas are designated as smoking areas:

- Deck 10, forward, Starboard side
- Deck 9, forward, Starboard side at Quiet Cove
- Deck 4, aft, starboard side from 6:00 p.m. to 6:00 a.m. only (all of Deck 4 is non-smoking from 6:00 a.m. to 6:00 p.m.)

Smoking is prohibited inside all guest staterooms and on stateroom verandahs. Guest found smoking in their staterooms or on their verandahs will be charged a \$250 stateroom recovery fee.

Electronic cigarettes may only be used in designated smoking areas.

### Walt Disney Theatre


Theatrical performances may use artificial fog, strobe lights, pyrotechnics and other special effects. For the safety of our performers and the comfort of those around you, the use of any photography or video recording device or any electronic equipment is prohibited.

### Verandah Safety

Please do not leave any combustible materials on your balcony when not present in your stateroom for safety reasons.



Morning	8:30	8:45	9:00	9:15	9:30	9:45	10:00	10:15	10:30	10:45	11:00	11:15	11:30	11:45	12:00	12:15	12:30	12:45	1:00	1:15	1:30			
FUNNEL VISION													Toy Story (G) Funnel Vision											
BUENA VISTA THEATRE											Saving Mr. Banks (PG-13) Duration: 2 Hours 5 Minutes													
CHARACTERS	Please refer to Character Board in Lobby Atrium for today's Character Appearances.																							
	Don't forget your Camera to capture those Magical Moments!																							
FUN FOR ALL AGES	Youth Activities Open House 🎮 Disney's Oceaneer Lab																							
	Port Adventures - Please check your tickets for meeting times and locations.								Family Crafts Diversions		Ping Pong Tournament Wide World of Sports Deck				Who Am I? Diversions									
	Board Games available in Diversions and Promenade Lounge.																							
ADULTS	Friends of Bill W. Outlook Cafe										Coffee Mingle Cove Cafe				Cruise Staff Lunch Triton's									
	Books and Magazines available in Cove Cafe.																							
VIBE 14-17 YEARS OLD											Youth Activities Open House 🎮				Chill Time				Video Game Challenge					
EDGE 11-14 YEARS OLD							Youth Activities Open House 🎮												Wii Challenge					
OCEANEER LAB 3-12 YEARS OLD	Youth Activities Open House 🎮																							
OCEANEER CLUB 3-12 YEARS OLD							Animation Antics 🎮										Wii Challenge 🎮							
	Cartoon Time						Swingin' Like Tarzan 🦋		Relay Games 🦋				Lunch		Play-Doh Fun									

Afternoon	1:45	2:00	2:15	2:30	2:45	3:00	3:15	3:30	3:45	4:00	4:15	4:30	4:45	5:00	5:15	5:30	5:45	6:00	6:15	6:30	6:45			
FUNNEL VISION	Cars (G) Funnel Vision								Live Music with Dreem Funnel Vision								Peter Pan (G) Funnel Vision							
BUENA VISTA THEATRE	Mary Poppins (G) Duration: 2 Hours 19 Minutes										Muppets Most Wanted (PG) Duration: 1 Hour 52 Minutes													
CHARACTERS	Please refer to Character Board in Lobby Atrium for today's Character Appearances.														Minnie Lobby Atrium (P)		Donald Lobby Atrium (P)							
															Pluto Dk 4, Mid		Goofy Dk 4, Mid							
FUN FOR ALL AGES			Family Crafts Promenade Lounge				Wii Challenge Diversions						Sail Away with Dreem Deck Stage						<div>SHOWTIME</div> <div>Comedy &amp; Ventriloquism of <b>Lynn Trefzger</b> Walt Disney Theatre</div> 					
											Disney Trivia Promenade Lounge				Live Music with Roberto & Daria Promenade Lounge									
			Toddler Time for Families Captain's Closet, Disney's Oceaneer Club																					
ADULTS	Informal Bridge Play Diversions								Know It All Trivia Diversions				Mike Archer LIVE Quiet Cove Pool		Walk A Mile Preludes		Live Piano with Tom Scott Cadillac Lounge							
	Books and Magazines available in Cove Cafe.														Sports Trivia Diversions									
VIBE 14-17 YEARS OLD	Video Game Challenge				Float Fun Trivia				Craft Corner				Youth Activities Open House 🎮								Scavenger Hunt			
EDGE 11-14 YEARS OLD			Hoop It Up!						Smoothie Time				Homework Help				Ultimate Challenge				Youth Activities Open House 🎮			
OCEANEER LAB 3-12 YEARS OLD	Piston Cup Challenge 🦋								Scavenger Hunt 🦋						Monstropolis Most Wanted 🦋				Dinner in Disney's Oceaneer Lab		Dane Party			
OCEANEER CLUB 3-12 YEARS OLD	Play-Doh Fun 🦋								Let's Build a Fort 🦋						Where's Tink? 🦋				Dinner in Disney's Oceaneer Lab		Coloring Time			

Evening	7:00	7:15	7:30	7:45	8:00	8:15	8:30	8:45	9:00	9:15	9:30	9:45	10:00	10:15	10:30	10:45	11:00	11:15	11:30	11:45	12:00	
FUNNEL VISION					Monsters, Inc. (G) Funnel Vision						Miracle (PG) Funnel Vision											
BUENA VISTA THEATRE					Muppets Most Wanted (PG) Duration: 1 Hour 52 Minutes						Thor: The Dark World (PG-13)  DOLBY 3D Duration: 1 Hour 51 Minutes											
CHARACTERS		Donald <small>Lobby Atrium (P)</small>		Mickey <small>Lobby Atrium (P)</small>							Minnie <small>Lobby Atrium (P)</small>		Mickey & Pluto <small>Lobby Atrium (P)</small>									
	Chip & Dale <small>Dk 4, Mid</small>		Daisy <small>Dk 4, Mid</small>							Goofy <small>Dk 4, Mid</small>		Chip & Dale <small>Dk 4, Mid</small>										
FUN FOR ALL AGES			Game Show: The Wheel <small>Wavebands</small>				 <i>Comedy &amp; Vaudeville</i> of <b>Lynn Trefzger</b> <small>Walt Disney Theatre</small>				Disney Disco <small>Studio Sea</small>											
			Family Superstar Karaoke <small>Studio Sea</small>																			
			Live Music with Dreem <small>Promenade Lounge</small>						Live Music with Dreem <small>Promenade Lounge</small>				Live Music with Dreem <small>Promenade Lounge</small>									
ADULTS			Live Guitar with Mike Archer <small>Diversions</small>						Live Guitar with Mike Archer <small>Diversions</small>				Adult Variety: Michael Holly <small>Walt Disney Theatre</small>		80's Flashback <small>Wavebands</small>		Cruise Staff DJ <small>Wavebands</small>					
			Live Piano with Laurence J Blackler <small>Cadillac Lounge</small>				Live Piano with Tom Scott <small>Cadillac Lounge</small>		Live Piano with Laurence J Blackler <small>Cadillac Lounge</small>						Adult Exclusive: Lava Flow <small>Disney's Oceaneer Lab</small>							
VIBE <small>14-17 YEARS OLD</small>			Rockband Challenge				Chill Time						Gender Wars						Sports Deck Fun			
EDGE <small>11-14 YEARS OLD</small>	Youth Activities Open House						Wii Competition		Chillin' in Edge				Gender Wars				Pajamarama Movie Night					
OCEANEER LAB <small>3-12 YEARS OLD</small>	Glow Jam		Gassess in Action								Marshmallow Olympics				Adult Exclusive Open House							
															Lava Flow							
OCEANEER CLUB <small>3-12 YEARS OLD</small>		Pluto's Pajama Party					Chillin' in the Club				Face Paint Time				Aloha Luau							

Symbol for activities that will be repeated during the cruise



FOLD

Fold along the dotted lines and take me with you so you don't miss any of the fun!

FOLD

IN THE SPOTLIGHT SERIES  
SOLVE IT! SERIES  
JUMP UP! SERIES  
CREATE & INVENT SERIES  
OPEN HOUSE  
CLUBHOUSE SERIES  
STORYBOOK SERIES



SATURDAY, MAY 3, 2014 - KEY WEST, FLORIDA

# BUENA VISTA THEATRE

Deck 5, Aft

DOLBY 3D



11:00 a.m.  
Duration:  
2 hrs 5 mins  
Rating: PG-13



2:00 p.m.  
Duration:  
2 hrs 19 mins  
Rating: G



5:30 p.m.  
& 8:00 p.m.  
Duration:  
1 hr 52 mins  
Rating: PG



10:30 p.m.  
Duration:  
1 hr 51 mins  
Rating: PG-13

## Character Appearances

### PLUTO

Deck 4, Midship - 5:15 p.m.

### MICKEY & PLUTO

Lobby Atrium (P) - 10:00 p.m.

### MINNIE MOUSE

Lobby Atrium (P)  
5:15 p.m. & 9:30 p.m.

### DONALD DUCK

Lobby Atrium (P)  
5:45 p.m. & 7:15 p.m.

### GOOFOY

Deck 4, Midship  
5:45 p.m. & 9:30 p.m.

### CHIP & DALE

Deck 4, Midship  
7:15 p.m. & 10:00 p.m.

### DAISY DUCK

Deck 4, Midship - 7:45 p.m.

### MICKEY MOUSE

Lobby Atrium (P) - 7:45 p.m.



(P) - Port Side (S) - Starboard Side

Don't forget your Camera to capture those Magical Moments!  
Check here each day for all of today's Character Appearances or refer to the Character Board in the Lobby Atrium.

Meet-and-Greets will be advertised for the length of time the line will be open. To avoid disappointment, please meet at start time of appearances.

## YOUTH ACTIVITIES THEMED EXPERIENCES

### CLUBHOUSE SERIES

focuses on movement and features content which appeals to younger children.

### JUMP UP! SERIES

includes large group games & movement-oriented activities.

### STORYBOOK SERIES

is designed with a strong connection to the Disney classic stories.

### CREATE & INVENT SERIES

will have a tactile focus allowing children to create and admire their work.

### IN THE SPOTLIGHT SERIES

focuses on children's stage presence with lots of activities and enthusiasm.

### SOLVE IT! SERIES

are less active, but will challenge children with problem/solutions-based activities.

### YOUTH ACTIVITIES OPEN HOUSE

Activities for families, adults and children of all ages to enjoy together.

## SHIP DIRECTORY

### YOUTH ACTIVITIES

DISNEY'S OCEANEER CLUB	DECK 5, MID	7:00 AM - 12:00 MID
DISNEY'S OCEANEER LAB	DECK 5, MID	9:00 AM - 10:30 PM
EDGE	DECK 2, MID	10:00 AM - 1:00 AM
VIBE	DECK 11, MID	11:00 AM - 12:00 MID
FLOUNDER'S REEF NURSERY	DECK 5, AFT	7:00 AM - 11:00 PM

### POOLS

Children under 12 years of age must have adult supervision in all pools.

GOOFOY'S POOL	DECK 9, MID	9:00 AM - 6:00 PM
		7:00 PM - 10:00 PM
MICKEY'S POOL	DECK 9, AFT	8:00 AM - 10:00 PM
MICKEY'S SLIDE	DECK 9, AFT	1:00 PM - 5:00 PM
MICKEY'S SPLASH ZONE	DECK 9, AFT	8:00 AM - 8:00 PM
QUIET COVE POOL (18+)	DECK 9, FWD	6:00 AM - 12:00 MID

### RECREATION

PORT ADVENTURES DESK	DECK 3, MID	7:30 AM - 11:00 AM
VISTA FITNESS CENTER (18+)	DECK 9, FWD	6:00 AM - 10:00 PM
WIDE WORLD OF SPORTS DECK	DECK 10, FWD	24 HOURS

### GENERAL INFORMATION

BUENA VISTA THEATRE	DECK 5, AFT	SHOWTIMES
DISNEY VACATION CLUB DESK	DECK 4, MID	5:00 PM - 10:00 PM
FUNNEL VISION	DECK 9, MID	SHOWTIMES
GUEST SERVICES	DECK 3, MID	24 HOURS
HAIR BRAIDING	DECK 9, MID	
MEDICAL HEALTH CENTER	DECK 1, FWD	9:30 AM - 11:00 AM
		4:30 PM - 7:00 PM
ONBOARD SALES DESK	DECK 4, MID	4:00 PM - 6:00 PM
		7:30 PM - 10:00 PM
PORT & SHOPPING DESK	DECK 3, MID	7:30 PM - 8:30 PM
PRELUDES	DECK 4, FWD	5:45 PM - 6:15 PM
QUARTER MASTERS (ARCADE)	DECK 9, MID	24 HOURS
SHUTTERS PHOTO GALLERY	DECK 4, AFT	5:30 PM - 11:00 PM
VISTA SPA AND SALON	DECK 9, FWD	8:00 AM - 10:00 PM
WALT DISNEY THEATRE	DECK 4, FWD	SHOWTIMES

### SHOPPING

ART GALLERY	DECK 4, MID	7:00 PM - 9:00 PM
MICKEY'S MATES	DECK 4, FWD	6:00 PM - 11:00 PM
RADAR TRAP (DUTY FREE)	DECK 3, FWD	6:00 PM - 11:00 PM
TREASURE KETCH	DECK 4, FWD	6:00 PM - 11:00 PM

## TIME ZONE CHANGE

Remember to turn your clocks **BACK 1 HOUR**  
upon retiring on **SATURDAY** evening,  
or first thing **SUNDAY** morning.



## IMPORTANT NUMBERS

Fire/Security: 7-3001  
Medical EMERGENCY: 7-3000  
Health Center: 7-1923

## DINNER MENU

Animator's Palate: Taste of the Caribbean  
Parrot Cay: Taste of the Caribbean  
Triton's: Taste of the Caribbean  
Dining Times: 5:45pm & 8:15pm

## DRINK OF THE DAY

Key Lime Margarita (Alcoholic)  
Mint Tea Fruit Punch (Non - Alcoholic)

## WEATHER FORECAST

Today: Partly Sunny  
High: 81°F/27°C  
Tomorrow: Partly Sunny  
High: 81°F/27°C

Evening Attire: Cruise Casual

## DINING & LOUNGES

### BREAKFAST

BEACH BLANKET BUFFET	DECK 9, AFT	6:30 AM - 10:00 AM
GOOFOY'S GALLEY	DECK 9, AFT	6:00 AM - 9:00 AM
PARROT CAY	DECK 3, AFT	7:00 AM - 10:30 AM
TRITON'S (À-LA CARTE)	DECK 3, MID	7:30 AM - 9:30 AM

### LUNCH

BEACH BLANKET BUFFET	DECK 9, AFT	12:00 PM - 2:00 PM
GOOFOY'S GALLEY	DECK 9, AFT	10:30 AM - 7:00 PM
PINOCCHIO'S PIZZERIA	DECK 9, MID	10:30 AM - 6:00 PM
PLUTO'S DOG HOUSE	DECK 9, AFT	10:30 AM - 6:00 PM
TRITON'S	DECK 3, MID	12:00 PM - 1:30 PM

### DINNER

ANIMATOR'S PALATE	DECK 4, AFT	5:45 PM & 8:15 PM
PARROT CAY	DECK 3, AFT	5:45 PM & 8:15 PM
TRITON'S	DECK 3, MID	5:45 PM & 8:15 PM
PALO (18+)	DECK 10, AFT	6:00 PM - 9:00 PM
BEACH BLANKET (À-LA CARTE)	DECK 9, AFT	6:00 PM - 8:30 PM
PLUTO'S DOG HOUSE	DECK 9, AFT	6:00 PM - 9:30 PM

### LATE NIGHT SNACKS

DIVERSIONS	DECK 3, FWD	11:00 PM - 12:00 MID
ICE CREAM AT GOOFOY'S GALLEY	DECK 9, AFT	7:00 PM - 12:00 MID
PINOCCHIO'S PIZZERIA	DECK 9, MID	9:30 PM - 12:00 MID
PROMENADE LOUNGE	DECK 3, AFT	11:00 PM - 12:00 MID

### ADDED FEATURES

BEVERAGE STATION	DECK 9, AFT, PORT SIDE	24 HOURS
ROOM SERVICE	DIAL 6801 OR 6802	24 HOURS

### ENTERTAINMENT - LOUNGES - BARS

Adults must be 21 and older to consume alcoholic beverages.

CADILLAC LOUNGE (18+)	DECK 3, FWD	5:30 PM - 12:00 MID
COVE CAFE (18+)	DECK 9, MID	6:30 AM - 12:00 MID
DIVERSIONS (18+ AFTER 9:00 PM)	DECK 3, FWD	5:30 PM - 12:00 MID
INTERNET CAFE	DECK 3, AFT	24 HOURS
OUTLOOK CAFE (18+)	DECK 10, MID	10:00 AM - 12:00 MID
PINOCCHIO'S PIZZERIA	DECK 9, MID	9:30 AM - 12:00 MID
PLUTO'S DOG HOUSE	DECK 9, AFT	10:30 AM - 6:00 PM
PRELUDES	DECK 4, FWD	5:45 PM - 6:15 PM
		8:00 PM - 8:30 PM
PROMENADE LOUNGE	DECK 3, AFT	8:00 AM - 12:00 MID
SIGNALS (18+)	DECK 9, FWD	9:30 AM - 10:30 PM
STUDIO SEA	DECK 4, MID	SHOWTIMES
WAVEBANDS (18+)	DECK 3, FWD	7:30 PM - 2:00 AM

Public Health Advisory: Consuming raw or undercooked meats, poultry, seafood, shellfish, or eggs may increase your risk for food borne illness, especially if you have certain medical condition

All Ashore: Approx: 7:15 a.m.  
All Aboard: 4:45 p.m.

## Ship's Agent In Key West

Caribe Nautical Services, Inc. P.O. Box 285, Key West, FL 33041,  
Tel: 305-294-3288 or 305-797-0850