

PERSONAL NAVIGATOR

THURSDAY, MAY 15, 2014

Sunrise: 6:38 a.m. Sunset: 7:53 p.m.

Evening Attire: Formal

All Ashore: Approx: 8:00 a.m.

Last Tender: 3:30 p.m.

Today: Sunny High: 82°F/28°C

Tomorrow: Sunny High: 82°F/28°C

CABO SAN LUCAS, MEXICO



**JOIN US AS THE
TALENTED CREW OF THE
DISNEY WONDER SHOWCASE
THEIR HIDDEN TALENTS!**

WALT DISNEY THEATRE

Deck 4, Forward

6:15 PM & 8:30 PM

As a courtesy to all Guests, we kindly advise that the saving of seats is not permitted in the Walt Disney Theatre.



Assistance available at the entrance to the Walt Disney Theatre 30 minutes prior to show time.

Cabo San Lucas

Port Information

The area of Cabo San Lucas was originally inhabited by the Pericues who were a Native American tribe known for their skillful weaving and extensive knowledge of irrigation.

The first explorers of the area were Hernan Cortez in 1535 and Juan Rodriguez Cabrillo in 1542.

Pirates used the area as a provision stop and hiding place after attacks on the Manila Galleons.

After the Spanish treasure-galleon, the "Great St Anne" was captured; King Phillip of Spain ordered an establishment of a fortress at Cabo to rid the waters of the "undesirables."

The founding of the fort opened the area up for exploration and at the end of the 19th century the exportation of bark from the palo blanco tree made the area a main shipping port.

Today, the warm waters, the beaches and the abundance of world-famous sport fishing motivate a great number of vacationers to visit Cabo San Lucas.

JON HAMM
Disney
MILLION DOLLAR ARM
365 Rating: (PG)
MOVIE PREVIEW
Walt Disney Theatre,
Deck 4, Forward,
12:01 a.m.

Don't Miss:

Rock 'N' Bowl (18+)

Wavebands, Deck 3, Forward - 5:15 p.m.

Join your Club Host and Cruise Staff DJ for Rock 'n; Roll Music and Wii Bowling. Oh Yes, it's going to be fun!

Officers' Ball

Lobby Atrium, Deck 3, Midship - 7:30 p.m.

Captain Fabian and his Officers cordially invite you to the Lobby Atrium for a wonderful evening of dance and socialising. Be sure to bring your dancing shoes as our duo provides the atmosphere. We look forward to sharing this evening with you!

Who Wants to be a Mouseketeer?

Studio Sea, Deck 4, Midship - 9:45 p.m.

Your chance to get in to the "hot seat" and win limited edition prizes. Or, play along as part of our live studio audience.



TIME ZONE CHANGE

Remember to turn your clocks
BACK 1 HOUR upon retiring on
THURSDAY evening, or first thing
FRIDAY morning.



Please check your tour tickets for meeting times and locations.
Visit the Port Adventures Desk, Deck 3, Midship for any questions.

DINNER MENU

Animator's Palate: Captain's Gala
Parrot Cay: Captain's Gala
Triton's: Captain's Gala

DRINK OF THE DAY

Blue Margarita (Alcoholic)
Mango Crush (Non Alcoholic)

IMPORTANT NUMBERS

Fire/Security: 7-3001
Medical Emergency: 7-3000
Health Center: 7-1923

ADULT ACTIVITY HIGHLIGHTS



VISTA SPA FITNESS CLASSES & SEMINARS

Sunrise Stretch - Vista Spa Fitness Center - 7:00 a.m.
Complimentary Footprint Analysis - Vista Spa Fitness Center - 9:00 a.m.
Pilates - Vista Spa Fitness Center - 5:00 p.m.

TASTING CLASSES

Bourbon Tasting (21+) - Cove Cafe - 10:30 p.m.
 Please make reservations for tastings at Guest Services for a nominal fee.
 Tasting Seminars are only for Guests 21 and Older.

CLUB
18*21

CLUB 18*21 - SOCIAL

Cove Cafe, Deck 9, Midship - 4:45 p.m.
 Come and socialize with your fellow cruisers

ROCK 'N' BOWL

Wavebands, Deck 3, Forward - 5:15 p.m.
 Join your Club Host and Cruise Staff DJ for Rock 'n' Roll music and Wii Bowling. Oh Yes, it's going to be fun!

LIVE PIANO WITH LAURENCE J BLACKLER

Cadillac Lounge, Deck 3, Forward - 7:30, 9:30, 10:30 & 11:30 p.m.
 Join Laurence J Blackler as he plays live piano for your listening pleasure.

VARIETY SHOW: WAYNE HOFFMAN

Walt Disney Theatre, Deck 4, Forward - 10:15 p.m.
 Featuring the Magic & Mind Reading of Wayne Hoffman, in this exclusive adult cabaret style show.

MATCH YOUR MATE

Wavebands, Deck 3, Forward - 10:45 p.m.
 Back by popular demand, It's time to play everyone's favorite couples game show - Match Your Mate!

FUN FOR ALL AGES HIGHLIGHTS

WHO AM I?

Promenade Lounge, Deck 3, Aft - 1:15 p.m.
 Join your Cruise Staff in a fun and hilarious game where our panel has to guess who they are.

CRAFTS: FANS

Promenade Lounge, Deck 3, Aft - 1:45 p.m.
 Join your Cruise Staff and create a fun souvenir for you to keep.

CRUISIN' FOR TRIVIA

Promenade Lounge, Deck 3, Aft - 2:45 p.m.
 Navigate your way through a round of questions testing your general knowledge.



FIESTA JACKPOT BINGO

Wavebands, Deck 3, Forward - 4:00 p.m.
 Four cash prizes and great prizes are up for grabs. PLUS another chance to win the snowball jackpot. Pre Sales start 15 minutes prior to game.

DISNEY TRIVIA

Promenade Lounge, Deck 3, Aft - 4:15 p.m.
 Navigate your way through another round of questions to test how much you really know about Disney.

PIN TRADING STATION

Mickey's Mates, Deck 4, Midship - 7:15 p.m.
 A variety of limited-edition pins exclusively designed and created for Disney Cruise Line.

FAMILY SUPERSTAR KARAOKE

Wavebands, Deck 3, Forward - 7:30 p.m.
 Join your Cruise Staff in Studio Sea tonight and sing along to your favorite song - fun for everyone.

OFFICERS' BALL

Lobby Atrium, Deck 3, Midship - 7:30 p.m.
 Captain Fabian and his Officers cordially invite you to the Lobby Atrium for a wonderful evening of dance and socialising. Be sure to bring your dancing shoes as our house band provide the atmosphere. We look forward to sharing this evening with you!



WHO WANTS TO BE A MOUSEKETEER?

Studio Sea, Deck 4, Midship - 9:45 p.m.
 Your chance to get in to the "hot seat" and win limited edition prizes. Or, play along as part of our live studio audience.



YOUTH ACTIVITIES HIGHLIGHTS

DINE & PLAY

A convenience for families dining at 8:15 p.m., our Youth Activities Counselors will be available at 9:15 p.m. at the entrance of Triton's, Parrot Cay and Animator's Palate dining rooms to bring registered children to join the fun in the Oceaneer Club and Oceaneer Lab.



Deck 5, Aft (7-18500) 7:00 a.m. - 11:00 p.m.

Infants and Toddlers can enjoy toys and activities at Flounder's Reef Nursery. Reservations are first come, first served so please stop by!



Deck 5, Midship (7-1440) (3 - 12 years old) 9:00 a.m. - 12:00 mid

STORY TIME WITH BELLE

4:00 p.m.

Come and listen to one of your favorite Disney stories.

PLUTO'S PAJAMA PARTY

7:30 p.m.

Bring the little ones in their pajamas but there will be anything but sleep when Pluto and friends host the ultimate slumber party!



Deck 5, Midship (7-1445) (3 - 12 years old) 7:00 a.m. - 12:00 mid

PARACHUTE GAMES

12:00 p.m.

Have a blast playing fun games with our colorful parachutes.

ALL ABOUT ME

1:45 p.m.

Discover more about yourself as you make crafts that are all about you!



Deck 2, Midship (7-5810) (11 - 14 years old)

10:00 a.m. - 12:00 mid

ANIMATION CELLS

8:00 p.m.

Learn what it takes to be a Disney Animator, then put your new skills to the test as you create your very own animation cell.

GENDER WARS

10:00 p.m.

Join us as we find out who really are the king or queen of the castle.



Deck 11, Midship (7-1456)

(14 - 17 years old) 11:00 a.m. - 12:00 mid

CARDS TOURNAMENT

2:15 p.m.

Join your friends for a friendly game of cards.

CRAFT CORNER

8:00 p.m.

Imagination is the key. It's time to get creative and put your crafty skills to use!

BUENA VISTA THEATRE

Deck 5, Aft
Today's Movies

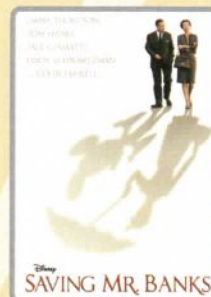
DOLBY 3D



12:30 p.m.

Duration: 2 hrs 16 mins

Rating: PG-13



3:15 p.m. & 10:30 p.m.

Duration: 2 hrs 5 mins

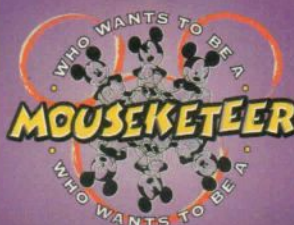
Rating: PG-13



5:45 p.m. & 8:00 p.m.

Duration: 1 hr 25 mins

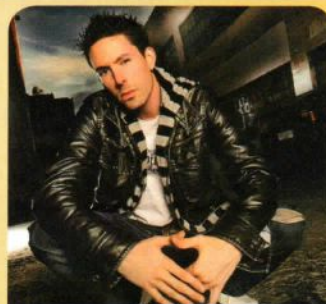
Rating: G



FAMILY GAME SHOW

Your chance to get into the world famous hot seat and win an exclusive prize in our version of the well known television game show.

**Studio Sea,
Deck 4, Midship,
9:45 p.m.**



ADULT VARIETY ACT

Featuring the Magic and Mind-Reading of Wayne Hoffman, as he entertains you in this adult exclusive show.

**Walt Disney Theatre (18+),
Deck 4, Forward,
10:15 p.m.**

YOUTH ACTIVITIES OPEN HOUSE

Open House is an opportunity for all to come and participate in a variety of exciting activities and free time in the Oceaneer Club, Oceaneer Lab, Flounder's Reef Nursery, Vibe and Edge throughout the cruise. During these times secured programming will still be offered in the other venue for those looking to check their children into care.

Disney's Oceaneer Club: 9:00 a.m. - 2:00 p.m.

Disney's Oceaneer Lab: 5:30 p.m. - 9:30 p.m.

Vibe: 4:00 p.m. - 6:00 p.m.

Edge: 10:00 a.m. - 12:00 p.m.

Vibe: 11:00 a.m. - 12:00 p.m.

Edge: 6:00 p.m. - 8:00 p.m.

MORE TO ENJOY WHILE ONBOARD

BOOK NOW AND SAVE!

To find out more and how to save up to 10% off your next cruise, stop by the Future Cruise Sales Desk, Deck 4, Midship, or call 7-2848.

PORT AND SHOPPING INFORMATION

Cabo is not to be missed, offering some of the best shopping this cruise! Meet your Shopping Guide, Alyssa, in Diamonds International store #1a between 10:00 a.m. - 12:00 p.m. Make sure to pick up your shopping maps at the gangway!

Last Minute Cabo Shopping Tips

Visit your Shopping Guide, Alyssa, at the Port Shopping Desk between 8:00 a.m. - 9:00 a.m. for any additional shopping information. This is your last chance to pick up your VIP Cards and Shopping Maps before heading ashore!

DISNEY VACATION CLUB® GROUP PREVIEW

Want to learn more about taking magical vacations year after year? Please see a Disney Vacation Club representative on Deck 4, Midship, or call 7-2805 from your stateroom phone for more information about our interactive group presentation.

QUARTER MASTERS ARCADE

Can you unlock the Grand MASTER KEY? Challenge yourself and discover the rewards that await you including cool Headphones, Underwater Cameras and Disney Princesses Prize Pack, come over to Deck 9, Midship, Quarter Masters Arcade and you could win a treasure.

EARLY FLIGHT DEPARTURES - LAST CHANCE

Guests with flights departing San Diego prior to 12:30 p.m. are kindly asked to notify Guest Services located on Deck 3, Midship no later than 12:00 noon today.

Connect@Sea

We are now offering a NEW and improved Internet service to stay connected on your cruise like no other in the industry! Internet packages range from \$0.25 per MB - \$89.00 (1000 MB package). For more information contact your Connect@Sea Expert or Guest Services onboard.



Cabo San Lucas boasts a landscape dotted with prickly cacti and dramatic rock formations bordered by white-sand beaches and sparkling turquoise waters. Famous for sports fishing, Cabo San Lucas has earned a reputation as the billfish capital of the world. It's a haven for outdoor activities as well as more relaxed experiences. For the adventurous type, reserve a space on the Cabo Canopy Adventure, Cabo Dolphin Swim or Camel & Mexican Outback Adventure. Visit the Port Adventures desk, located Deck 3, Midship, and our friendly team will assist in planning your day in Cabo San Lucas.



VISTA SPA

Deck 9, Forward - Phone: 7-1465

SPA TASTER

25 minute Back, Neck and Shoulder Massage

25 minute Booster Facial

Today Only: 50 minute treatment only \$118

2014 DISNEY CRUISE LINE MERCHANDISE

Step into Mickey's Mates today and commemorate your Disney cruise with a wide selection of 2014 Disney Cruise Line Merchandise. Mickey's Mates, Deck 4, Forward.



Shutters PHOTO BOOK!

Create a personalized storybook of your cruise with up to 30 of your professional photos, plus beautiful shots of the ship and interiors. Customize your book in minutes using our Interactive Photo Kiosks on Decks 3 and 4. Orders need to be edited and placed before 9 p.m. on last night of the cruise.

Visit Shutters on Deck 4, Aft, for details.

**Offer valid per stateroom only.*

Photos captured on your vacation are only available for purchase during this cruise.

SHOPPING

2014 DISNEY CRUISE LINE MERCHANDISE

Step into Mickey's Mates today and commemorate your Disney cruise with a wide selection of 2014 Disney Cruise Line merchandise. From t-shirts to photo albums and more, you are sure to find a special souvenir for the whole family. Deck 4, Forward.

DISNEY CRUISE LINE® PANAMA CANAL CROSSING TEE AVAILABLE

Don't miss your chance to commemorate this week's sailing on the Disney Wonder® Cruise Ship with a t-shirt designed especially for the Panama Canal Crossing. Treasure Ketch, Deck 4 Forward.

STYLISH JEWELRY AT TREASURE KETCH

On a budget but still in need of some bling? Stop by Treasure Ketch today where you'll find a wide selection of stylish jewelry from popular brands such as Fossil and Alex and Ani. Deck 4, Forward.

H2O BATH COLLECTION

Treat yourself to the ultimate indulgence with H2O products. H2O offers shampoo, conditioner, lip balm, hydrating body lotion and after sun care. Available in Treasure Ketch.

CHAMILIA JEWELRY

Create and personalize your own Chamilia Bracelet. Choose from a selection of sterling silver beads with many of them featuring your favorite Disney Characters! Available in Treasure Ketch.

Due to port regulations, when the ship is docked, the stores will remain closed.

IMPORTANT INFORMATION

Security Notice

All Guests (including Children) who wish to disembark or embark the ship are required to present their Key to the World card at the gangway. A photo ID is also required for those Guests who are 18 years of age or older. Guests under the age of 18 are required to have a parent, guardian or other responsible adult sign an authorization form at the Guest Service Desk if they wish to go ashore unaccompanied or with any adult from another stateroom.

Sunscreen/Insect Repellent Advisory

Use sunscreen first and protect against mosquito borne illnesses by applying insect repellent on top of sunscreen when going ashore.

Cold and Flu Reminder

Please wash hands frequently and thoroughly, particularly before meals. Contact the Health Center by dialing 7-1923, should anyone in your party become ill.

Inclement Weather

For the safety of all Guests, outdoor events may be changed due to unforeseen weather conditions.

Corridor Quiet Hours

As a courtesy to all our Guests, please recognize quiet hallway hours from 10:00 p.m. til 8:00 a.m.

Environmental Message

With Disney's commitment to the Environment please refrain from throwing anything over the Ship's side. Thank you.

No Reserved Seats Policy

As a courtesy to all Guests we kindly advise that the saving of seats is not permitted in the Walt Disney Theatre, and the saving of the sun loungers is not permitted on Deck 9 and 10. Items left unattended will be returned to lost and found at Guest Services, Deck 3, Midship.

Smoking

For the comfort of our guests, the following areas are designated as smoking areas:

- Deck 10, forward, Starboard side
- Deck 9, forward, Starboard side at Quiet Cove
- Deck 4, aft, starboard side from 6:00 p.m. to 6:00 a.m. only (all of Deck 4 is non-smoking from 6:00 a.m. to 6:00 p.m.)

Smoking is prohibited inside all guest staterooms and on stateroom verandahs. Guest found smoking in their staterooms or on their verandahs will be charged a \$250 stateroom recovery fee. Electronic cigarettes may only be used in designated smoking areas.


Walt Disney Theatre




Theatrical performances may use artificial fog, strobe lights, pyrotechnics and other special effects. For the safety of our performers and the comfort of those around you, the use of any photography or video recording device or any electronic equipment is prohibited.

Verandah Safety

Please do not leave any combustible materials on your balcony when not present in your stateroom for safety reasons.

Morning	8:30	8:45	9:00	9:15	9:30	9:45	10:00	10:15	10:30	10:45	11:00	11:15	11:30	11:45	12:00	12:15	12:30	12:45	1:00	1:15	1:30			
FUNNEL VISION			Winnie the Pooh (2011) (G) Funnel Vision						Toy Story 2 (G) Funnel Vision							The Emperor's New Groove (G) Funnel Vision								
BUENA VISTA THEATRE																		Captain America: The Winter Soldier (PG-13) Duration: 2 Hours 16 Minutes					DOLBY 3D	
CHARACTERS	Please refer to Character Board in Lobby Atrium for today's Character Appearances.																							
	Don't forget your Camera to capture those Magical Moments!																							
FUN FOR ALL AGES		Youth Activities Open House Disney's Oceaneer Club																						
	Port Adventures - Please check your tickets for meeting times and locations.													Family Crafts Promenade Lounge						Who Am I? Promenade Lounge				
	Board Games available in Diversions and Promenade Lounge.																							
ADULTS	Friends of Bill W. Outlook Cafe		Books and Magazines available in Cove Cafe.									Coffee Mingle Cove Cafe					Cruise Staff Lunch Triton's							
			Footprint Analysis Vista Spa Fitness Center																					
VIBE 14-17 YEARS OLD											Youth Activities Open House				Chillin' in Vibe									
EDGE 11-14 YEARS OLD								Youth Activities Open House							Chillin' in Edge									
OCEANEER LAB 3-12 YEARS OLD					Bingo								Craft Corner				Parachute Games				Lunch			
OCEANEER CLUB 3-12 YEARS OLD	Youth Activities Open House																							

Afternoon	1:45	2:00	2:15	2:30	2:45	3:00	3:15	3:30	3:45	4:00	4:15	4:30	4:45	5:00	5:15	5:30	5:45	6:00	6:15	6:30	6:45			
FUNNEL VISION	Pixar Short Films (G) Funnel Vision						Live Music with Dreem Funnel Vision						Virtual Tours Funnel Vision					Pocahontas (G) Funnel Vision						
BUENA VISTA THEATRE							Saving Mr. Banks (PG-13) Duration: 2 Hours 5 Minutes										Disney Nature: Bears (G) Duration: 1 Hour 25 Minutes							
CHARACTERS											Mickey Lobby Atrium (P)											Mickey & Pluto Lobby Atrium (P)		
	Please refer to Character Board in Lobby Atrium for today's Character Appearances.																		Goody & Donald DK 4, Mid					
FUN FOR ALL AGES	Crafts: Fans Promenade Lounge						Bingo Pre Sales	Fiesta Jackpot BINGO Wavebands					Live Music with Roberto & Daria Promenade Lounge					 Walt Disney Theatre						
			Cruisin' for Trivia Promenade Lounge																					
	Live Music with Dreem Deck Stage				Disney Trivia Promenade Lounge																			
ADULTS	Informal Bridge Play Diversions						Know It All Trivia Diversions		Club 18*21 - Social Cove Cafe			Rock 'N' Bowl Wavebands												
	Books and Magazines available in Cove Cafe.																							
VIBE 14-17 YEARS OLD			Cards Tournament				Chess and Checkers Challenge		Youth Activities Open House 🍷									Smoothie Time						
EDGE 11-14 YEARS OLD		Wii Challenge						Smoothie Time		Homework Help					Craft Corner		Youth Activities Open House 🍷							
OCEANEER LAB 3-12 YEARS OLD	All About Me 🧡			Gasses in Action 🧡														Youth Activities Open House 🍷						
OCEANEER CLUB 3-12 YEARS OLD	Open House 🍷					Explore the Club				Story Time with Belle				Memory Wall 🧡					Dinner					

Evening	7:00	7:15	7:30	7:45	8:00	8:15	8:30	8:45	9:00	9:15	9:30	9:45	10:00	10:15	10:30	10:45	11:00	11:15	11:30	11:45	12:00	
FUNNEL VISION					The Hunchback of Notre Dame (G) Funnel Vision						Fantasia 2000 (G) Funnel Vision											
BUENA VISTA THEATRE					Disney Nature: Bears (G) Duration: 1 Hour 25 Minutes						Saving Mr. Banks (PG-13) Duration: 2 Hours 5 Minutes											
CHARACTERS					Mickey & Minnie Dk 4, Mid						Donald, Daisy Lobby Atrium (F)		Mickey & Minnie Lobby Atrium (F)									
FUN FOR ALL AGES		Pin Trading Station <small>Mickey's Mates</small>	Officers' Ball Lobby Atrium												Disney Disco Studio Sea		MOVIE PremEAR <small>Disney</small> MILLION DOLLAR ARM Rating: (PG)		Begins at 12:01 a.m. Doors open at 11:45 p.m. Duration: 2 hrs 4 mins Walt Disney Theatre			
			Family Superstar Karaoke Wavebands									Live Music with Roberto & Daria Promenade Lounge			Live Music with Roberto & Daria Promenade Lounge							
ADULTS			Live Piano with Laurence J Blackler Cadillac Lounge							Motown Hits with Cruise Staff DJ Wavebands			Adult Variety: Wayne Hoffman Walt Disney Theatre				Cruise Staff DJ Wavebands					
										Love Songs with Laurence Cadillac Lounge												
VIBE 14-17 YEARS OLD			Your Pick: Games Galore		Craft Corner					Video Game Challenge						Gender Wars						
EDGE 11-14 YEARS OLD	Youth Activities Open House 🥳				Animation Cells				Ultimate Challenge				Gender Wars									
OCEANEER LAB 3-12 YEARS OLD	Youth Activities Open House 🥳												Flubber 🧪									
OCEANEER CLUB 3-12 YEARS OLD			Pluto's Pajama Party 🐕								Camp Out 🌿				Invade the Club							

Symbol for activities that will be repeated during the cruise



FOLD

Fold along the dotted lines and take me with you so you don't miss any of the fun!

FOLD

IN THE SPOTLIGHT SERIES
SOUL OF IT SERIES
JUMP UP! SERIES
CREATE & INSPIRE SERIES
CLUBHOUSE SERIES
STORYBOOK SERIES
OPEN HOUSE

THURSDAY, MAY 15, 2014 - CABO SAN LUCAS, MEXICO

BUENA VISTA THEATRE

Deck 5, Aft

DOLBY 3D



12:30 p.m.
Duration:
2 hrs 16 mins
Rating: PG-13



3:15 p.m. & 10:30 p.m.
Duration:
2 hrs 5 mins
Rating: PG-13



5:45 p.m. & 8:00 p.m.
Duration:
1 hr 25 mins
Rating: G

Character Appearances

FORMAL MICKEY & FRIENDS GROUP PHOTO
Lobby Atrium (P) - 4:00 p.m.

MICKEY & PLUTO
Lobby Atrium (P) - 5:30 p.m.

GOOFY & DONALD
Deck 4, Midship - 5:30 p.m.

MICKEY & MINNIE
Deck 4, Midship - 7:45 p.m.
Lobby Atrium (P) - 10:15 p.m.

DONALD & DAISY
Lobby Atrium (P) - 9:45 p.m.

(P) - Port Side (S) - Starboard Side

Don't forget your Camera to capture those Magical Moments!
Check here each day for all of today's Character Appearances or refer to the Character Board in the Lobby Atrium.

Meet-and-Greets will be advertised for the length of time the line will be open. To avoid disappointment, please meet at start time of appearances.

YOUTH ACTIVITIES THEMED EXPERIENCES

CLUBHOUSE SERIES
focuses on movement and features content which appeals to younger children.

STORYBOOK SERIES
is designed with a strong connection to the Disney classic stories.

JUMP UP! SERIES
includes large group games & movement-oriented activities.

CREATE & INVENT SERIES
will have a tactile focus allowing children to create and admire their work.

IN THE SPOTLIGHT SERIES
focuses on children's stage presence with lots of activities and enthusiasm.

SOLVE IT! SERIES
are less active, but will challenge children with problem/solutions-based activities.

YOUTH ACTIVITIES OPEN HOUSE

Activities for families, adults and children of all ages to enjoy together.

SHIP DIRECTORY

YOUTH ACTIVITIES

DISNEY'S OCEANEER CLUB	DECK 5, MID	9:00 AM - 12:00 MID
DISNEY'S OCEANEER LAB	DECK 5, MID	7:00 AM - 12:00 MID
EDGE	DECK 2, MID	10:00 AM - 12:00 MID
VIBE	DECK 11, MID	11:00 AM - 12:00 MID
FLOUNDER'S REEF NURSERY	DECK 5, AFT	7:00 AM - 11:00 PM

POOLS

Children under 12 years of age must have adult supervision in all pools.

GOOFY'S POOL	DECK 9, MID	9:00 AM - 6:00 PM
		7:00 PM - 10:00 PM
MICKEY'S POOL	DECK 9, AFT	8:00 AM - 10:00 PM
MICKEY'S SLIDE	DECK 9, AFT	1:00 PM - 5:00 PM
MICKEY'S SPLASH ZONE	DECK 9, AFT	8:00 AM - 8:00 PM
QUIET COVE POOL (18+)	DECK 9, FWD	6:00 AM - 12:00 MID

RECREATION

PORT ADVENTURES DESK	DECK 3, MID	7:00 AM - 10:00 AM
VISTA FITNESS CENTER (18+)	DECK 9, FWD	6:00 AM - 10:00 PM
WIDE WORLD OF SPORTS DECK	DECK 10, FWD	24 HOURS

GENERAL INFORMATION

BUENA VISTA THEATRE	DECK 5, AFT	SHOWTIMES
DISNEY VACATION CLUB DESK	DECK 4, MID	5:00 PM - 10:00 PM
FUNNEL VISION	DECK 9, MID	SHOWTIMES
GUEST SERVICES	DECK 3, MID	24 HOURS
HAIR BRAIDING	DECK 9, MID	
MEDICAL HEALTH CENTER	DECK 1, FWD	9:30 AM - 11:00 AM
		4:30 PM - 7:00 PM

ONBOARD SALES DESK	DECK 4, MID	4:00 PM - 6:00 PM
		7:30 PM - 8:30 PM
		9:30 PM - 10:00 PM
PORT & SHOPPING DESK	DECK 3, MID	7:30 PM - 8:30 PM
PRELUDES	DECK 4, FWD	5:45 PM - 6:15 PM
		8:00 PM - 8:30 PM

QUARTER MASTERS (ARCADE)	DECK 9, MID	24 HOURS
SHUTTERS PHOTO GALLERY	DECK 4, AFT	4:00 PM - 11:00 PM
VISTA SPA AND SALON	DECK 9, FWD	8:00 AM - 10:00 PM
WALT DISNEY THEATRE	DECK 4, FWD	SHOWTIMES

SHOPPING

ART GALLERY	DECK 4, MID	7:00 PM - 9:00 PM
MICKEY'S MATES	DECK 4, FWD	4:30 PM - 11:00 PM
RADAR TRAP (DUTY FREE)	DECK 3, FWD	6:00 PM - 10:30 PM
TREASURE KETCH	DECK 4, FWD	4:30 PM - 11:00 PM



TIME ZONE CHANGE

Remember to turn your clocks **BACK 1 HOUR**
upon retiring on **THURSDAY** evening,
or first thing **FRIDAY** morning.

IMPORTANT NUMBERS

Fire/Security: 7-3001
Medical EMERGENCY: 7-3000
Health Center: 7-1923

DINNER MENU

Animator's Palate: Captain's Gala
Parrot Cay: Captain's Gala
Triton's: Captain's Gala
Dining Times: 5:45pm & 8:15pm

DRINK OF THE DAY

Blue Margarita
(Alcoholic)
Mango Crush
(Non - Alcoholic)

WEATHER FORECAST

Today: Sunny
High: 82°F/28°C
Tomorrow: Sunny
High: 82°F/28°C

Evening Attire: Formal

DINING & LOUNGES

BREAKFAST

BEACH BLANKET BUFFET	DECK 9, AFT	7:00 AM - 10:30 AM
GOOFY'S GALLEY	DECK 9, AFT	6:30 AM - 9:00 AM
PARROT CAY	DECK 3, AFT	7:30 AM - 10:30 AM
TRITON'S (A-LA CARTE)	DECK 3, MID	8:00 AM - 9:30 AM

LUNCH

BEACH BLANKET BUFFET	DECK 9, AFT	12:00 AM - 2:45 PM
GOOFY'S GALLEY	DECK 9, AFT	10:45 AM - 7:00 PM
PINOCCHIO'S PIZZERIA	DECK 9, MID	10:45 AM - 6:00 PM
PLUTO'S DOG HOUSE	DECK 9, AFT	10:45 AM - 6:00 PM
TRITON'S	DECK 3, MID	12:00 PM - 1:30 PM

DINNER

ANIMATOR'S PALATE	DECK 4, AFT	5:45 PM & 8:15 PM
PARROT CAY	DECK 3, AFT	5:45 PM & 8:15 PM
TRITON'S	DECK 3, MID	5:45 PM
PALO (18+)	DECK 10, AFT	6:00 PM - 9:00 PM
BEACH BLANKET (A-LA CARTE)	DECK 9, AFT	6:30 PM - 8:30 PM
PLUTO'S DOG HOUSE	DECK 9, AFT	6:00 PM - 9:30 PM

LATE NIGHT SNACKS

DIVERSIONS	DECK 3, FWD	11:00 PM - 12:00 MID
ICE CREAM AT GOOFY'S GALLEY	DECK 9, AFT	7:00 PM - 12:00 MID
PINOCCHIO'S PIZZERIA	DECK 9, MID	9:30 PM - 12:00 MID
PROMENADE LOUNGE	DECK 3, AFT	11:00 PM - 12:00 MID

ADDED FEATURES

BEVERAGE STATION	DECK 9, AFT, PORT SIDE	24 HOURS
ROOM SERVICE	DIAL 6801 OR 6802	24 HOURS

ENTERTAINMENT - LOUNGES - BARS

Adults must be 21 and older to consume alcoholic beverages.

CADILLAC LOUNGE (18+)	DECK 3, FWD	5:30 PM - 12:00 MID
COVE CAFE (18+)	DECK 9, MID	6:30 AM - 12:00 MID
DIVERSIONS (18+ AFTER 9:00 PM)	DECK 3, FWD	5:30 PM - 12:00 MID
INTERNET CAFE	DECK 3, AFT	24 HOURS
OUTLOOK CAFE (18+)	DECK 10, MID	7:00 AM - 12:00 MID
PINOCCHIO'S PIZZERIA	DECK 9, MID	9:30 AM - 12:00 MID
PLUTO'S DOG HOUSE	DECK 9, AFT	10:30 AM - 6:00 PM
PRELUDES	DECK 4, FWD	5:45 PM - 6:15 PM
		8:00 PM - 8:30 PM
PROMENADE LOUNGE	DECK 3, AFT	8:00 AM - 12:00 MID
SIGNALS (18+)	DECK 9, FWD	9:30 AM - 10:30 PM
STUDIO SEA	DECK 4, MID	SHOWTIMES
WAVEBANDS (18+)	DECK 3, FWD	7:30 PM - 2:00 AM

Public Health Advisory: Consuming raw or undercooked meats, poultry, seafood, shellfish, or eggs may increase your risk for food borne illness, especially if you have certain medical condition

All Ashore: Approx: 8:00 a.m.
Last Tender: 3:30 p.m.

Ship's Agent In Cabo San Lucas

Omar Levva Andres; Fraccionamiento Agua Clara;
Manzana 5 lote 21 # 1207; Colonia cangrejos; Phone: 011 521 624 1577250