

# PERSONAL NAVIGATOR

THURSDAY, MAY 15, 2014

Sunrise 6:19 a.m. Sunset: 7:37 p.m.  
Evening Attire: Semi Formal

Today: Sunny High: 78°F/26°C  
Tomorrow: Partly Cloudy High: 76°F/24°C

DAY AT SEA

## Disney's Believe

Genie from Aladdin and many of Disney's most beloved magic makers take a father on a magical journey to show him that anything is possible if you just believe.

WALT DISNEY THEATRE  
DECK 3 & 4, FORWARD  
6:15 p.m. & 8:30 p.m.



As a courtesy to all Guests, we kindly advise that the saving of seats is not permitted in the Walt Disney Theatre.



Assistance available at the entrance to the Walt Disney Theatre 30 minutes prior to show time.

## Disney FANTASY Fun Facts

While the cute baby elephant, Dumbo serves as a fantastic stern character, in real life he would have to gather 24,266 other adult male African elephants to match the weight of the Disney Fantasy.

A "light point" is shipbuilders' lingo for anything that's a light. There are approximately 80,000 light points on the Disney Fantasy – "double the normal number for a ship this size," according to Meyer Werft, the shipyard in Germany where the Disney Fantasy was built. The large number is the result of Disney's flair for theatrical experiences – accomplished primarily with LEDs and other "environmentally friendly" lighting.

Looking upward in the ship's Lobby Atrium brings Guest's eye-to-crystal with a glowing piece of "Art Nouveau-inspired jewelry" – a cascading chandelier flowing downward from a massive stained-glass flourish on the ceiling in peacock hues of greens and blues. The chandelier itself is more than 10 feet in diameter, a one-of-a-kind work of art evoking a peacock in stained glass and more than 60,000 clear Swarovski crystal beads.

### Debark Talk Broadcast

Your Cruise Director, Ray, presents important information including details regarding U.S. Customs and Border Protection procedures.

Tune into Channel 5 of your stateroom TV.



### Movie PremEAR

Walt Disney Theatre,  
Deck 3 & 4, Forward,

Duration: 2 Hours 4 Minutes

Rating: (PG)

12:01 a.m.

(Doors Open At 11:45 p.m.)

## Don't Miss:

### The Disney Fantasy's Whistle

*Will be played after today's noon announcement*

The Disney Fantasy's whistle, a prominent element of the "Sailing Away" deck party at the start of the cruise, is quite the musical talent. It's able to perform not just the first musical line of "When You Wish Upon a Star" but also the second line of the song ("makes no difference who you are") plus several measures of "Yo Ho (A Pirate's Life for Me)," "It's a Small World," "Be Our Guest," "Hi Diddle Dee Dee (An Actor's Life for Me)" and "A Dream is a Wish."

### Captain's Signing

*White Caps, Deck 3, Forward - 12:15 p.m.*

Meet the Master of the Disney Fantasy and have your cruise memories signed.

### Anyone Can Cook - Lobster Ravioli (18+)

*D Lounge, Deck 4, Midship - 2:15 p.m.*

From our galley to yours. Join our chefs as they show you how to prepare delicious dishes.  
Today's Menu - Lobster Ravioli

### Majority Rules (18+)

*The Tube, Deck 4, Aft - 10:00 p.m.*

Join your Club Host, to find out who really rules!



### Sport's Simulators

Digital sports simulators are available at Goofy's Sports Deck on Deck 13, Aft. This state-of-the-art virtual sports experience includes golf, basketball, baseball, hockey, football and soccer. Book now at the Port Adventures Desk, Deck 5, Midship.

## DINNER MENU

Animator's Palate: Captain's Gala  
Enchanted Garden: Captain's Gala  
Royal Court: Captain's Gala

## DRINK OF THE DAY

High Tide (Alcoholic)  
Passion Cream Freeze  
(Non Alcoholic)

## IMPORTANT NUMBERS

Fire/Security: 7-3001  
Medical Emergency: 7-3000  
Health Center: 7-1923



# ADULT ACTIVITY HIGHLIGHTS

## SENSES SPA FITNESS CLASSES & SEMINARS

*Sunrise Stretch* - Donald's Pool - 7:00 a.m.  
*Fab Abs* - Donald's Pool - 7:30 a.m.  
*Complimentary Footprint Analysis* - Senses Spa & Salon - 8:00 a.m. & 5:00 p.m.  
*Body Sculpt Boot Camp* (Nom. Fee) - Senses Fitness Center - 9:00 a.m.  
*How to Increase Your Metabolism* - Senses Fitness Center - 11:00 a.m.  
*Acupuncture: Chinese Herbs* - Senses Fitness Center - 12:15 p.m.  
*Eat More to Weigh Less* - Senses Spa & Salon - 1:00 p.m.  
*Good Feet: Relieving Back Pain* - Senses Spa & Salon - 2:00 p.m.  
*Group Cycling* - Senses Fitness Center - 4:00 p.m.  
*Fitness Frenzy* (13-17, Nom. Fee) - Senses Fitness Center - 7:00 p.m.



## TASTING CLASSES

*Chocolate & Liquor Tasting* (21+) - Ooh La La - 12:15 p.m.  
*Stem to Stern Wine Tasting* (21+) - Ooh La La - 1:45 p.m.  
*Rum Tasting* (21+) - Meridian - 2:00 p.m.  
*Martini Tasting* (21+) - Meridian - 4:00 p.m.  
*Mixology* (21+) - Skyline - 4:00 p.m.  
*Tequila & Margarita Tasting* (21+) - Ooh La La - 4:45 p.m.  
 Please make reservations for tastings at Guest Services for a nominal fee.  
 Tasting Seminars are only for Guests 21 and Older.

## CLUB 18\*21 - LUNCH

*Royal Court, Deck 3, Midship - 12:30 p.m.*

## CLUB 18\*21 - MIXER

*The Tube, Deck 4, Aft - 9:45 p.m.*



## ART OF THE THEME SHOW TOUR

*Pre-Book at Guest Services, Deck 3, Midship*

Join us on a guided ship tour and discover the key ingredients that make the Disney Fantasy cruise ship one-of-a-kind.



## ESPN DREAM TEAM DRAFT DAY - BASKETBALL

*O'Gills Pub, Deck 4, Aft - 9:45 a.m.*

Join the "Commissioner" and engage in this interactive fantasy basketball draft unlike anything you've ever seen! Can YOU draft the greatest basketball team of All-Time?

## LIVE GUITAR WITH DAVID KENNY

*O'Gills Pub, Deck 4, Aft - 7:30 p.m., 10:00 p.m. & 11:00 p.m.*

Join David Kenny as he plays live for your listening pleasure.

## MAJORITY RULES

*The Tube, Deck 4, Aft - 10:00 p.m.*

Join your Club Host, to find out who really rules!

# FUN FOR ALL AGES HIGHLIGHTS

## JAKE & THE NEVERLAND PIRATES

*D Lounge, Deck 4, Midship - 9:30 a.m.*

A'Hoey there mates, Join us for an adventure in D Lounge with Jake and the Neverland Pirates.



## JACK-JACK'S INCREDIBLE DIAPER DASH

*Lobby Atrium, Deck 3, Midship - 10:00 a.m.*

Calling all baby Cruisers! It's time to take to the mat to see who's the fastest crawler of the seven seas! Register your baby 15 minutes prior to the big race.



## MICKEY 200

*The Tube, Deck 4, Aft - 10:30 a.m.*

Don't eat your vegetables... race them in this wild and wacky charge to the finish line. May the best veggie win! (Limited Availability)



## \$10,000 MEGA JACKPOT BINGO

*D Lounge, Deck 4, Midship - 11:00 a.m.*

It's Big, it's Massive, it's Supersized! It's \$10,000 MEGA Jackpot Bingo! Take home \$10,000 if you can cover your card in 46 numbers or less. If not, we carry on to play for the biggest cash prize of the session, plus today's Disney Vacation Club sponsored raffle includes a \$100 Onboard Credit and prize-packs. Pre Sales start 15 minutes prior to game.



## CAPTAIN'S SIGNING

*White Caps, Deck 3, Forward - 12:15 p.m.*

Meet the Master of the Disney Fantasy and have your cruise memories signed.

## DISNEY ANIMATION: STAGING A SCENE

*D Lounge, Deck 4, Midship - 12:45 p.m.*

Go behind the scenes at Walt Disney Animation Studios and learn how basic poses, silhouette, and placement (long shot, medium shot, close-up) enhance animation storytelling. Then, participate in a drawing exercise where you make the choices to communicate a story in this fun and fascinating enrichment program.



## FINAL JACKPOT BINGO

*Buena Vista Theatre, Deck 4 & 5, Forward - 4:15 p.m.*

The snowball jackpot MUST BE WON at this final session! Beat the line and get your cards early. Who will be the lucky winner? It could be you! Pre Sales start 30 minutes prior to game.



## FAMILY SUPERSTAR KARAOKE

*D Lounge, Deck 4, Midship - 9:30 p.m. & 11:15 p.m.*

Join your Cruise Staff in D Lounge tonight and sing along to your favorite song - fun for everyone.



## CLUB NEW YEAR'S EVE

*D Lounge, Deck 4, Midship - 10:45 p.m.*

Club New Year's Eve, you won't want to miss this journey of musical genres in history and performances by some of your favorite Cruise Staff. Bring your family and help us count down to a brand new year!





# YOUTH ACTIVITIES HIGHLIGHTS

## DINE & PLAY

A convenience for families dining at 8:15 p.m., our Youth Activities Counselors will be available at 9:15 p.m. at the entrance of Royal Court, Enchanted Garden and Animator's Palate dining rooms to bring registered children to join the fun in the Youth Activity areas.



**Deck 5, Midship (7-1440)**  
(3-12 years old) 9:00 a.m. - 12:00 mid

### TINKER BELL'S TALENT SHOW

11:15 a.m.

Tinker Bell has come from Pixie Hollow to Disney Cruise Line to help young cruisers discover their Fairy Talents.

### PLUTO'S PAJAMA PARTY

9:00 p.m.

Bring the little ones in their pajamas but there will be anything but sleep when Pluto and friends host the ultimate slumber party!



**Deck 5, Midship (7-1445)**  
(3-12 years old) 9:00 a.m. - 12:00 mid

### SUPER SLOPPY SCIENCE

12:45 p.m.

Join Professor Make-O-Mess in some of the most extreme experiments you will ever see in the world of Super Sloppy Science!

### STITCH'S ADVENTURE SQUAD

7:15 p.m.

Stitch, everyone's favorite alien, is making an appearance to share some of his mischievous games and activities.



**Deck 13, Midship (7-9743)**  
(11-14 years old) 9:00 a.m. - 1:00 a.m.

### SCAVENGER HUNT

11:00 a.m.

A little friendly competition exploring the ship; see if you can solve the clues and finish first.

### ESPN DREAM TEAM DRAFT DAY - BASKETBALL

8:45 p.m.

Join the "Commissioner" and engage in this interactive fantasy basketball draft unlike anything you've ever seen! Can YOU draft the greatest basketball team of All-Time?



**Entrance on Deck 4, Forward (7-9418)**  
(14-17 years old) 10:00 a.m. - 2:00 a.m.

### DREAM NOW! SEA HOW! - CREATE IT

2:00 p.m.

Imagine a job where your days are spent dreaming up plots, characters, designs or mechanics that only come from one place... In this VIP Experience you will meet one of the creative minds with Disney. A special Guest will ignite your imagination and answer your questions.

### MAGIC SHOW

11:15 p.m.

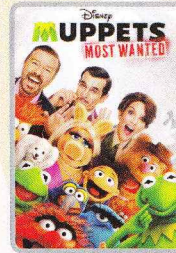
The Magnificent Magician will demonstrate to you some of the best known magic tricks on the sea.

# BUENA VISTA THEATRE

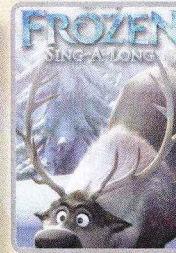
Deck 4 & 5, Midship  
**Today's Movies**

SING-A-LONG

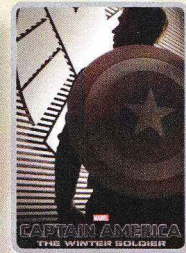
DOLBY.3D



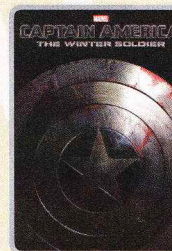
8:00 a.m.  
Duration:  
1 hr 52 mins  
Rating: PG



10:30 a.m.  
Duration:  
1 hr 48 mins  
Rating: PG



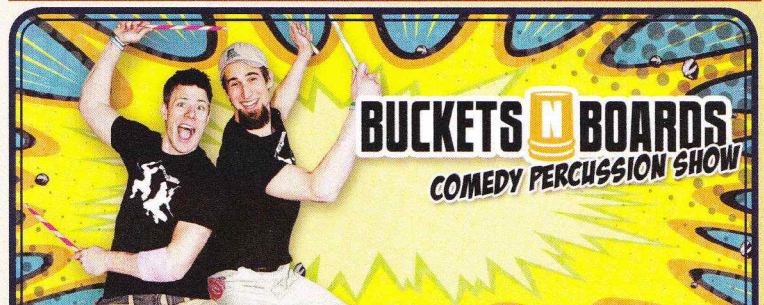
1:00 p.m.  
Duration:  
2 hrs 16 mins  
Rating: PG-13



5:30 p.m. & 8:15 p.m.  
Duration: 2 hrs 16 mins  
Rating: PG-13



11:00 p.m.  
Duration: 1 hr 25 mins  
Rating: G



Featuring the Rhythm and Comedy of Buckets N Boards, as they entertain you in their family fun-filled show.

Then this evening in his adult exclusive show.

## FAMILY VARIETY ACT

*Walt Disney Theatre,  
Deck 3 & 4, Forward,  
2:00 p.m.  
(Doors Open At 1:30 p.m.)*

## ADULT VARIETY ACT

*The Tube (18+),  
Deck 4, Aft,  
10:30 p.m.*

## YOUTH ACTIVITIES OPEN HOUSE

Open House is an opportunity for all to come and participate in a variety of exciting activities and free time in the Oceaneer Club, Oceaneer Lab, It's A Small World Nursery, Vibe and Edge throughout the cruise. During these times secured programming will still be offered in the other venue for those looking to check their children into care.

**Disney's Oceaneer Lab:** 10:30 p.m. - 12:00 mid

**Disney's Oceaneer Club:** 9:00 a.m. - 11:00 a.m.

**Vibe:** 10:00 a.m. - 11:00 a.m. & 6:30 p.m. - 8:30 p.m.

**Edge:** 9:00 a.m. - 10:00 a.m. & 5:00 p.m. - 6:30 p.m.



# MORE TO ENJOY WHILE ONBOARD



The puppies from 101 Dalmatians have gone missing! Use your special detective "badge" to track down the puppies and catch the villain who took them.

**Deck 2 & 5, Midship,**  
9:00 a.m. - 10:00 p.m.



**SENSES**  
SUN & SPA

## SALON TASTER SPECIAL

- Scalp Massage
- European Facial
- Hand Treatment
- Sunglow Makeover
- Conditioning Hair Treatment
- Eye Collagen Treatment

- Foot & Ankle Massage
- Neck & Shoulder Massage

Three for 99.00  
Five for 119.00  
All Eight for 139.00

## GUESS THE CARAT!

Guess the carat weight of one of our exquisite Sophia Fiori diamond rings. Whoever guesses closest wins a 5 carat midnight sapphire and a pair of midnight black sapphire studs! 9:30 a.m. - 7:00 p.m. Winners announced and raffle at 7:30 p.m.

Must be present to win!  
White Caps, Deck 3, Forward.  
This offer is not affiliated with Disney Cruise Line®.

*Sophia Fiori*



**Shutters**

## SMILE

Tonight is your last chance for professional portraits! Capture the magic of your vacation at one of our portrait studios and let the memories live.

Visit our professional portrait studios located in the Lobby Atrium, Deck 3, Midship.

5:00 p.m. - 6:00 p.m.  
7:15 p.m. - 8:30 p.m.  
9:30 p.m. - 10:30 p.m.

*\*Please note that photos are available for viewing on our interactive photo kiosks approximately five hours after being taken and are only available for purchase during this cruise.*

## NEW IN 2015!

Chart a magical new course for northern Europe - explore Norwegian fjords, Iceland and the Faroe Islands - steeped in Viking History from steaming geysers to scenic mountain ranges. Visit the Onboard Sales Desk for more information.



## DISNEY VACATION CLUB® GROUP PREVIEW

Want to learn more about taking magical vacations year after year? Please see a Disney Vacation Club representative on Deck 4, Midship, or call 7-2805 from your stateroom phone for more information about our interactive group presentation.



## runDisney® CASTAWAY CAY 5K REGISTRATION (10+)

Sign up today for the runDisney: Castaway Cay 5K! Please visit the Port Adventures Desk or the Guest Services Desk to register at anytime prior to our arrival at Disney's Castaway Cay. Please note that runners must be 10 years of age or older to participate.

## ARR-CADE

Where can you be a ninja, play the guitar like a rock star, race a car down the streets of Tokyo and along the way WIN some great prizes? Arr-CADE located Deck 11, Aft where the pirates play.



## Connect @ Sea

We are now offering a NEW and improved Internet service to stay connected on your cruise like no other in the industry! Internet packages range from \$0.25 per MB - \$89.00 (1000 MB package). For more information contact your Connect@Sea Expert or Guest Services onboard.

Disney Cruise Line

## PORT ADVENTURES

Disney's private island Castaway Cay not only offers a terrific family beach day, but many other excursions and rentals to compliment. Snorkeling, bike and float rentals, parasailing plus much more, means that there is something for everyone at Disney's Castaway Cay.

To make your reservation, visit the Port Adventures Desk, Deck 5, Midship.

## SHOPPING

### STYLISH WATCHES ONBOARD

Whether you need a tool for strict timekeeping or a fun fashion accessory, visit White Caps and browse the wide selection of stylish watches available including popular brands such as Ernst Benz, Michele, and Shinola. Deck 3, Forward.

### DISNEY FROZEN DVD AVAILABLE ONBOARD

For the ultimate family souvenir destination, visit Mickey's Mainsail where you'll find everything from Captain Mickey Push to Disney Cruise Line apparel and where, while supplies last, you can get your DVD copy of Disney's Frozen. Deck 3, Forward.

### CAPTAIN'S SIGNING

Stop by White Caps at 12:15 p.m. to meet the Master of the Disney Fantasy and have your cruise mementos signed! Stunning replica ships are available in Sea Treasures, Deck 3, Forward. Beautiful Disney Cruise Line® prints are available in the Vista Gallery, Deck 4, Midship.

### FRAGRANCE OF THE DAY

Stop by White Caps today and see if our selected scent suits your style! Deck 3, Forward.

### HIDDEN CHARACTERS IN THOMAS KINKADE ART!

Known as the "Painter of Light," Thomas Kinkade is one Disney's most celebrated artists having created an array of enchanting artwork. Stop by the Vista Gallery today to view his unique collection of paintings featuring some of your favorite Disney characters! Also, take the time to try and find all of the hidden Disney characters scattered throughout his paintings. Are you up to the challenge? Deck 4, Midship.

## IMPORTANT INFORMATION

### Security Notice

All Guests (including children) who wish to disembark the ship are required to present their Key to the World card at the gangway. A photo ID is also required for those Guests who are 18 years of age or older. Guests under the age of 18 are required to have a parent, guardian, or other responsible adult sign an authorization form at the Guest Service Desk if they wish to go ashore unaccompanied or with any adult from another stateroom.

**Sunscreen/Insect Repellent Advisory**  
Use sunscreen first and protect against mosquito borne illnesses by applying insect repellent on top of sunscreen when going ashore.

### Cold and Flu Reminder

Please wash hands frequently and thoroughly, particularly before meals. Contact the Health Center by dialing 7-1223, should anyone in your party become ill.

### Corridor Quiet Hours

As a courtesy to all our Guests, please recognize quiet hallway hours from 10:00 p.m. til 8:00 a.m.

### Inclement Weather

For the safety of all Guests, outdoor events may be changed due to unforeseen weather conditions.

### Environmental Message

With Disney's commitment to the Environment, please refrain from throwing anything over the Ship's side. Thank you!

### No Reserved Seats Policy

As a courtesy to all our Guests, we kindly advise that the saving of seats is not permitted in the Walt Disney Theatre, and the saving of the sun loungers is not permitted on Deck 11, 12, and 13. Items left unattended will be returned to lost and found at Guest Services, Deck 3 Midship.

### Smoking

For the comfort of our guests, the following areas are designated as smoking areas:

- Deck 13, forward, port side by Currents
- Deck 12, aft, port side outdoor area that is accessible through the Meridian Lounge
- Deck 4, aft, port side from 6:00 p.m. to 6:00 a.m. only (all of Deck 4 is non-smoking from 6:00 a.m. to 6:00 p.m.) Smoking is prohibited inside all guest staterooms and on stateroom verandahs. Guest found smoking in their staterooms or on their verandahs will be charged a \$250 stateroom recovery fee.

### Walt Disney Theatre

Theatrical performances may use artificial fog, strobe lights, pyrotechnics and other special effects. For the safety of our performers and the comfort of those around you, the use of any photography, video recording device or any electronic equipment is prohibited.

### Verandah Safety

Please do not leave any combustible materials on your balcony when not present in your stateroom for safety reasons.



**Bears**

11:00 p.m.  
Duration:  
1 hr 25 mins  
Rating: G

Lobby Atrium (V)  
7:45 p.m.

For details of daily Disney character appearances, refer to the character line in on Navigator Grid, or the digital character board in the Lobby Atrium.

DECK 3, FWD  
DECK 11 MIDDECK 3, FWD  
DECK 11 MID

## WAVES

1:15 p.m.



Symbol for activities that will be repeated during the cruise

Youth Activities Open House

FOLD

Fold along the dotted lines and take me with you so you don't miss any of the fun!

FOLD

IN THE SPOTLIGHT SERIES

SOLVE IT! SERIES

JUMP UP! SERIES

CREATE & INVENT SERIES

CLUBHOUSE SERIES

STORYBOOK SERIES

Morning	8:30	8:45	9:00	9:15	9:30	9:45	10:00	10:15	10:30	10:45	11:00	11:15	11:30	11:45	12:00	12:15	12:30	12:45	1:00	1:15	1:30	
FUNNEL VISION	Tinker Bell (G) Funnel Vision						The Princess and the Frog (G) Funnel Vision						The Lion King (G) Funnel Vision									
BUENA VISTA THEATRE	Muppets Most Wanted (PG) Duration: 1 Hour 52 Minutes < Starts at 8:00 a.m.						Frozen: Sing-A-Long (PG) Duration: 1 Hour 48 Minutes						Captain America 2 (PG-13) - Dolby 3D Duration: 2 Hours 8 Minutes									
CHARACTERS					Mickey Dk 4, Balcony	Jake Dk 4, Balcony		Princess Gathering Lobby Atrium				Minnie Dk 4, Balcony			Sofia Dk 4, Balcony			Character Dance Party Lobby Atrium				
FUN FOR ALL AGES	Toddler Time D Lounge						Bingo Pre Sales						Captain's Signing White Caps				Family Crafts La Piazza					
	Crafts: Origami Frogs La Piazza								Mickey 200 The Tube (Limited Availability)						Disney ANIMATION Staging a Scene D Lounge							
ADULTS	Friends of Bill W. Outlook				Art of The Theme Show Tour Pre-Book at Guest Services				Team Trivia O'Gills Pub				Ultimate Disney Trivia La Piazza									
	Boot Camp (Nom. Fee) Senses Fitness Center				ESPN Dream Team Draft Day - Basketball O'Gills Pub				Increase Your Metabolism Senses Fitness Center				Club 18*21 - Lunch Royal Court		Eat More to Weigh Less Senses Spa & Salon							
VIBE 14-17 YEARS OLD							Youth Activities Open House				Sun Deck Fun				Animation Antics							
EDGE 11-14 YEARS OLD							Youth Activities Open House				Elephant Soccer				Scavenger Hunt				Karaoke		Ice Cream Social	
OCEANEER LAB 3-12 YEARS OLD	Craft Corner						Disney Animation: Creating a Character		Wii Challenge										Craft Corner			
							Cup Stacking Challenge		Magic PlayFloor										Super Sloppy Science			
OCEANEER CLUB 3-12 YEARS OLD	Youth Activities Open House								Tinker Bell's Talent Show										Color Yourself Heroic			
							Mickey's Puzzle Playtime												Puzzle Play Time			
Afternoon	1:45	2:00	2:15	2:30	2:45	3:00	3:15	3:30	3:45	4:00	4:15	4:30	4:45	5:00	5:15	5:30	5:45	6:00	6:15	6:30	6:45	
FUNNEL VISION	Pixar Short Films (G) Funnel Vision					The Muppets (PG) Funnel Vision										Bedtime Stories (PG) Funnel Vision						
BUENA VISTA THEATRE	Captain America: The Winter Soldier (PG-13)										Bingo Pre Sales		Final Jackpot Bingo			Captain America: The Winter Soldier (PG-13) Duration: 2 Hours 16 Minutes						
CHARACTERS											Chip & Dale Dk 4, Balcony		Minnie Dk 4, Balcony		Daisy Preludes							
FUN FOR ALL AGES						Live Guitar with David Kenny Deck 12, Forward		Bingo Pre Sales						Talent Show Rehearsals D Lounge								
	Towel Folding The Tube		Disney Tunes Trivia La Piazza				Pictionary Challenge La Piazza								Live Piano with Michael Godwin La Piazza		Live Music with Fine Whines Lobby Atrium					
ADULTS	Anyone Can Cook - Lobster Ravioli D Lounge		Know It All Trivia O'Gills Pub		Chip It Golf Lobby Atrium						Tequila & Margarita Tasting (21+) Ooh La La											
	Movie Quotes Trivia O'Gills Pub						Group Cycling Senses Fitness Center				Pub Quiz O'Gills Pub											
VIBE 14-17 YEARS OLD	Dream Now! Sea How! - Create It					Dive into DJ'ing					Digi Hunt					Super Sloppy Science					Open House	
EDGE 11-14 YEARS OLD	Bingo					Disney Animation: Persistence of Vision					Brains and Brawns					Youth Activities Open House						
OCEANEER LAB 3-12 YEARS OLD	Relay Games		Cards Tournament				Craft Corner		Game Challenge										Create a Postcard			
							Get the Hook		Piston Cup Challenge								GAGA Ball					
OCEANEER CLUB 3-12 YEARS OLD							Craft Corner												Craft Corner			
	Journey to Neverland				Magic PlayFloor				Cruisin' with Crush		Memory Wall								Magic PlayFloor			
Evening	7:00	7:15	7:30	7:45	8:00	8:15	8:30	8:45	9:00	9:15	9:30	9:45	10:00	10:15	10:30	10:45	11:00	11:15	11:30	11:45	12:00	
FUNNEL VISION	Enchanted (PG) Funnel Vision										Remember the Titans (PG) Funnel Vision											
BUENA VISTA THEATRE	Captain America: The Winter Soldier (PG-13) Duration: 2 Hours 16 Minutes					Captain America: The Winter Soldier (PG-13) Duration: 2 Hours 16 Minutes										DisneyNature: Bears (G) Duration: 1 Hour 25 Minutes						
CHARACTERS	Belle Lobby Atrium (V)		Ariel Lobby Atrium (V)								Minnie Dk 4, Balcony			Mickey Dk 4, Balcony			Goofy Preludes					
FUN FOR ALL AGES								Family Superstar Karaoke D Lounge														
	Family Dance Party The Tube		The Quest The Tube				Walt Disney Theatre		Live Music with Fine Whines Lobby Atrium				Fine Whines LIVE Lobby Atrium		Family Superstar Karaoke D Lounge							
ADULTS	Live Guitar with David Kenny O'Gills Pub					DJ Requests The Tube					Majority Rules The Tube							Club DJ Day-na The Tube				
	Live Piano with Michael Godwin La Piazza					Andrea & Rafaela LIVE La Piazza																
VIBE 14-17 YEARS OLD	Youth Activities Open House					Pump It Up					Gender Wars					Magic Show						
EDGE 11-14 YEARS OLD	GAGA Ball		Craft Corner				ESPN Dream Team Draft Day - Basketball		Boys and Girls Chill				Glow Jam									
OCEANEER LAB 3-12 YEARS OLD	Wii Challenge				Four Square				Dance Party		Youth Activities Open House											
	Stitch's Adventure Squad				Mirror, Mirror												Anyone Can Cook					
OCEANEER CLUB 3-12 YEARS OLD	Cup Stacking Challenge				Wii Challenge				Craft Corner													
			Once Upon a Time		Game Challenge		Pluto's Pajama Party		Game Challenge		Camp Rocking Out!											