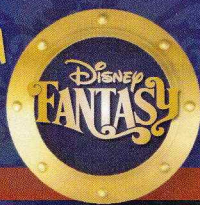


# PERSONAL NAVIGATOR

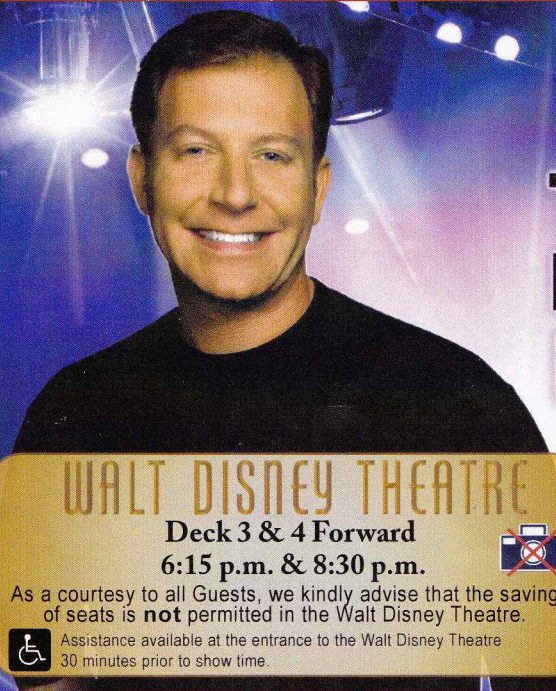


MONDAY, MAY 12, 2014

Sunrise: 6:12 a.m. Sunset: 7:16 p.m.  
Evening Attire: Cruise Casual  
All Ashore: 8:30 a.m. All Aboard: 3:45 p.m.

Today: Sunny High: 84°F/29°C  
Tomorrow: Partly Cloudy High: 78°F/26°C

COZUMEL, MEXICO



## T·H·E RICKY KALMON HYPNOSIS SHOW

*The ONLY Comedy Show Where the Audience Becomes The Stars!®*

WALT DISNEY THEATRE

Deck 3 & 4 Forward  
6:15 p.m. & 8:30 p.m.



As a courtesy to all Guests, we kindly advise that the saving of seats is **not** permitted in the Walt Disney Theatre.



Assistance available at the entrance to the Walt Disney Theatre 30 minutes prior to show time.

### Cozumel Port Information

Cozumel, Mexico is an invigorating port of call on a Caribbean Cruise vacation. An island and a city off the eastern coast of Mexico's Yucatan Peninsula, Cozumel is known for some of the world's healthiest coral reefs and rarest natural recreation. This island in the Caribbean Sea is an extremely popular destination for scuba-diving and snorkeling enthusiasts.

The Mayans considered the site sacred to the Moon Goddess, Ixchel, and women would make regular pilgrimages there to pay tribute and to wish for fertility in return.

The arrival of the Spanish in 1518 brought disease and devastation, nearly wiping out the Mayans and leaving the island all but deserted by 1570. It was an outpost for pirates until 1848, when warfare in the Yucatan drove refugees to settle there. A boom in visitors to the island came after 1959, when the famed Jacques Cousteau publicized Cozumel's coral reefs as among the best in the world for scuba diving.

Today, Guests can let their imaginations take flight in the island the Mayans named Cozumel—the "Island of the Swallows"—so long ago.

#### DOCKING

The ship will dock at the Punta Langosta pier. The pier is located downtown, with walk off access right into the city of Cozumel.



#### ADULT VARIETY ACT

Featuring the  
Magic & Illusion  
of Shawn Farquhar,  
as he entertains you  
in this adult exclusive show.

Walt Disney Theatre (18+),  
Deck 3 & 4, Forward  
11:00 p.m.  
(Doors Open At 10:45 p.m.)

### Don't Miss:

#### Art of The Theme Show Tour (18+)

*Pre-Book at Guest Services, Deck 3, Midship*

Join us on a guided ship tour and discover the key ingredients that make the Disney Fantasy cruise ship one-of-a-kind.

#### Chip-It Golf (12+)

*Lobby Atrium, Deck 3, Midship - 2:30 p.m.*

It's par for the course for our Guests 12 and older to compete on our special "greens" in this fun tournament.

#### Disney Animation: Cartoon Physics

*D Lounge, Deck 4, Midship - 3:15 p.m.*

Go behind the scenes at Walt Disney Animation Studios and see how flat drawings and pencil lines can come to life through basic techniques such as "Stretch and Squash", and create your own "bouncing ball" animation exercise in this entertaining and fun enrichment program.

#### So You Think You Know Your Family?

*The Tube, Deck 4, Aft - 7:30 p.m.*

This fun-filled family game show is always full of surprises. Find out how well you know, or don't know your family!

Disney Cruise Line

PORT ADVENTURES

#### IMPORTANT INFORMATION

Please check your tour tickets for meeting times and locations.  
Visit the Port Adventures Desk, Deck 5, Midship for any questions.

### DINNER MENU

Animator's Palate: Pacific Rim Cuisine  
Enchanted Garden: Continental Market Cuisine  
Royal Court: French Dinner Cuisine

### DRINK OF THE DAY

Yellow Bird (Alcoholic)  
Lava Smoothie (Non Alcoholic)

#### IMPORTANT NUMBERS

Fire/Security: 7-3001  
Medical Emergency: 7-3000  
Health Center: 7-1923



# ADULT ACTIVITY HIGHLIGHTS

## SENSES SPA FITNESS CLASSES & SEMINARS

*Sunrise Stretch* - Donald's Pool - 7:00 a.m.  
*Fab Abs* - Donald's Pool - 7:30 a.m.  
*Body Sculpt Boot Camp* (Nom. Fee) - Senses Fitness Center - 8:00 a.m.  
*Complimentary Footprint Analysis* - Senses Spa & Salon - 9:00 a.m.  
*Facial Workshop* - Senses Fitness Center - 9:15 a.m.  
*Group Cycling* - Senses Fitness Center - 4:00 p.m.  
*Fitness Frenzy* (13-17, Nom. Fee) - Senses Fitness Center - 7:00 p.m.



## TASTING CLASSES

*Cognac Tasting* (21+) - Cove Cafe - 10:00 p.m.  
*Whiskey Tasting* (21+) - Meridian - 10:30 p.m.  
 Please make reservations for tastings at Guest Services for a nominal fee.  
 Tasting Seminars are only for Guests 21 and Older.

## CLUB 18\*21 - MINI GOLF

*Goofy Golf, Deck 13, Aft - 4:30 p.m.*

CLUB  
18\*21

## CLUB 18\*21 - MIXER

*The Tube, Deck 4, Aft - 10:00 p.m.*  
 Come to join fellow cruisers your own age at our exclusive Club 18\*21 event.

## LIVE MUSIC WITH FINE WHINES

*La Piazza, Deck 4, Aft - 5:15 p.m., 7:30 p.m., 9:30 p.m. & 10:30 p.m.*  
 Join Fine Whines as they play live tonight for your listening pleasure.

## ICE BREAKERS

*The Tube, Deck 4, Aft - 10:00 p.m.*  
 Fancy some fun? Want to get to know your fellow guests? Then join us as we break the ice in this fun filled game show

## LIVE GUITAR WITH DAVID KENNY

*O'Gills Pub, Deck 4, Aft - 10:00 p.m. & 11:00 p.m.*  
 Join David Kenny as he plays live for your listening pleasure.

## 80'S/90'S REMIX WITH CLUB DJ DAY-NA

*The Tube, Deck 4, Aft - 11:45 p.m.*  
 Join Club DJ Day-na, as she spins the tunes and remix the 80's & 90's!

# FUN FOR ALL AGES HIGHLIGHTS

## DISNEY TRIVIA

*O'Gills Pub, Deck 4, Aft - 9:15 a.m.*  
 Navigate your way through a round of questions to test how much you really know about Disney.



## CHIP-IT GOLF (12+)

*Lobby Atrium, Deck 3, Midship - 2:30 p.m.*  
 It's par for the course for our Guests 12 and older to compete on our special "greens" in this fun tournament.



## DISNEY ANIMATION: CARTOON PHYSICS

*D Lounge, Deck 4, Midship - 3:15 p.m.*  
 Go behind the scenes at Walt Disney Animation Studios and see how flat drawings and pencil lines can come to life through basic techniques such as "Stretch and Squash", and create your own "bouncing ball" animation exercise in this entertaining and fun enrichment program.

## \$5,000 MEGA JACKPOT BINGO

*D Lounge, Deck 4, Midship - 4:30 p.m.*  
 Don't miss your chance to take home big money! 4 CASH prize games and great raffle prizes to be won! Complete the fourth game in 46 numbers or less and win the \$5,000 Mega Jackpot! Pre Sales start 15 minutes prior to game.



## DISNEY VACATION CLUB GROUP PREVIEW

*The Tube, Deck 4, Aft - 4:30 p.m.*  
 Want to learn more about taking magical vacations year after year? Please see a Disney Vacation Club representative on Deck 4, Midship, or call 7-2805 from your stateroom phone for more information about our interactive group presentation.



## SO YOU THINK YOU KNOW YOUR FAMILY?

*The Tube, Deck 4, Aft - 7:30 p.m.*  
 This fun-filled family game show is always full of surprises. Find out how well you know, or don't know your family!

## SENSES SPA BINGO

*D Lounge, Deck 4, Midship - 7:30 p.m.*  
 Four CASH prizes to be won! Plus great spa prizes that will pamper you, including a mini facial and massages all courtesy of the Senses Spa and Salon. Serenity now! Pre Sales start 15 minutes prior to game.



## FAMILY SUPERSTAR KARAOKE

*D Lounge, Deck 4, Midship - 9:30 p.m. & 10:45 p.m.*  
 Join your Cruise Staff in D Lounge tonight and sing along to your favorite song - fun for everyone.



## FAMILY FUSION

*D Lounge, Deck 4, Midship - 10:15 p.m.*  
 Bring the entire family and test your Disney knowledge in the high-tech interactive game show, Family Fusion.





# MORE TO ENJOY WHILE ONBOARD



## PORT & SHOPPING INFORMATION

Cozumel is Western Caribbean's most famous shopping port, find out why today. Make sure to pick up your Map & Shopping Coupons on the Gangway.

## MORE MAGIC IN EUROPE

Set sail for Europe! Whether you choose the Mediterranean or northern Europe, you're sure to experience a magical voyage of culture with amazing family adventures - begin your journey today! Visit the Onboard Sales Desk to learn more about our special onboard booking offer.



## DISNEY VACATION CLUB® GROUP PREVIEW

Want to learn more about taking magical vacations year after year? Please see a Disney Vacation Club representative on Deck 4, Midship, or call 7-2805 from your stateroom phone for more information about our interactive group presentation.



**SENSES**  
SPA & SALON

## PAMPER PACKAGE

- 50 minute Full Body Massage
- Foot & Ankle Massage
- Indian Scalp Massage
- 25 Minute Booster Facial

ONLY \$149

Call Senses Spa & Salon, 7-1465

## BIBBIDI BOBBIDI BOUTIQUE

Deck 5, Midship

Becoming the princess of your dreams creates memories for a lifetime. Where Fairy Godmothers in training are ready with Pixie Dust and Magic! Make your reservations for princess makeovers and the Pirate League today. Limited space available. Visit Bibbidi Bobbidi Boutique or call ext. 9438 to make a reservation.



**Shutters**

## GET THE PICTURE

Order a Get the Picture! photo disc and share your vacation memories digitally! No need to decide which photos to take home now, select your photos from the comfort of your home.

Print, send and share your photos easily!

Hurry as supplies are limited.

*\*Terms and conditions apply. Photos captured on your vacation are only available for purchase during this cruise.*

## ONBOARD AIRLINE CHECK IN

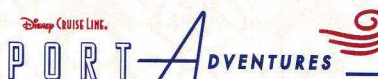
If you would like to have your boarding passes printed for you onboard and have your luggage taken to the airport for you, register before Wednesday. If you have a Disney Cruise Line airport transfer to Orlando International Airport and fly with one of the participating airlines, stop at Guest Services, Deck 3, Midship to register.

## Connect@Sea

We are now offering a NEW and improved Internet service to stay connected on your cruise like no other in the industry! Internet packages range from \$0.25 per MB - \$89.00 (1000 MB package). For more information contact your Connect@Sea Expert or Guest Services onboard.

## FREE ON DEMAND TV

Watch Disney movies, Hollywood features and even captioned content, plus much more "On Demand" for FREE in the comfort of your stateroom! Bookmark your movie and come back to watch it later. Press MENU on your stateroom television remote control, and follow the prompts.



Hola! We have arrived at the island paradise of Cozumel just off the coast of Mexico. This is the perfect day to enjoy the beach in Cozumel or explore the island on a Jeep tour.

There are a myriad of options so make sure to book your place at the Port Adventures Desk, Deck 5, Midship.

## SHOPPING

### EVERYTHING PRINCESS AT MICKEY'S MAINSAIL

Are you cruising with a young, aspiring Princess? Stop by Mickey's Mainsail for all things Disney Princess including dresses and accessories. Whether your princess is inspired by Cinderella, Belle, Merida, or Tiana, Mickey's Mainsail has everything you need to be royal ready! Deck 3, Forward.

### VERA BRADLEY BAGS AND ACCESSORIES

With their distinctive and colorful fabrics and trims, view our collection of Vera Bradley bags and accessories including the new Vera Bradley tote bags designed especially for Disney Cruise Line® available at White Caps. Deck 3, Forward.

### UNIQUE DISNEY ART AT THE VISTA GALLERY

Stop by the Vista Gallery to view original artwork by a variety of celebrated Disney artists featuring some of your favorite Disney characters. Also check out unique Disney art painted on original dessert plates from the Animator's Palate Restaurants on the Disney Magic® Cruise Ship and Disney Wonder® Cruise Ship. Created by popular Disney artists, Mark Seppala and Joe Kaminski, these one-of-a-kind plates are available exclusively on Disney Cruise Line® while supplies last. Deck 4, Midship.

### SOPHIA FIORI DIAMOND TRUNK SHOW

Sophia Fiori is an LA based designer, wholesaler, and one of Hollywood's favorite designers. Industry leaders in colored diamonds, and more specifically Caribbean blue diamonds - one of the single most popular purchases at sea because it reminds everyone of the colors of the Breathtaking Ocean! White Caps, Deck 3, Forward.

### ROYAL COURT ROYAL TEA

Hear ye, hear ye! Princes and Princesses are welcomed to join some of your favorite Disney Princesses at the Royal Court Royal Tea for an afternoon filled with music, fun, and delicious goodies! Stop by the Guest Services Desk, Deck 3, Midship, to register and to learn more about this royal event. Reservations required. Fee will apply. Limited space available.

## IMPORTANT INFORMATION

### Security Notice

All Guests (including children) who wish to disembark the ship are required to present their Key to the World card at the gangway. A photo ID is also required for those Guests who are 18 years of age or older. Guests under the age of 18 are required to have a parent, guardian or other responsible adult sign an authorization form at the Guest Service Desk if they wish to go ashore unaccompanied or with any adult from another stateroom.

### Sunscreen/Insect Repellent Advisory

Use sunscreen first and protect against mosquito borne illnesses by applying insect repellent on top of sunscreen when going ashore.

### Cold and Flu Reminder

Please wash hands frequently and thoroughly, particularly before meals. Contact the Health Center by dialing 7-1923, should anyone in your party become ill.

### Corridor Quiet Hours

As a courtesy to all our Guests, please recognize quiet hallway hours from 10:00 p.m. til 8:00 a.m.

### Inclement Weather

For the safety of all Guests, outdoor events may be changed due to unforeseen weather conditions.

### Environmental Message

With Disney's commitment to the Environment, please refrain from throwing anything over the Ship's side. Thank you!

### No Reserved Seats Policy

As a courtesy to all our Guests, we kindly advise that the saving of seats is not permitted in the Walt Disney Theatre, and the saving of the sun loungers is not permitted on Deck 11, 12, and 13. Items left unattended will be returned to lost and found at Guest Services, Deck 3 Midship.

### Smoking

For the comfort of our guests, the following areas are designated as smoking areas:

- Deck 13, forward, port side by Currents
- Deck 12, aft, port side outdoor area that is accessible through the Meridian Lounge
- Deck 4, aft, port side from 6:00 p.m. to 6:00 a.m. only (all of Deck 4 is non-smoking from 6:00 a.m. to 6:00 p.m.) Smoking is prohibited inside all guest staterooms and on stateroom verandahs. Guest found smoking in their staterooms or on their verandahs will be charged a \$250 stateroom recovery fee.

### Walt Disney Theatre

Theatrical performances may use artificial fog, strobe lights, pyrotechnics and other special effects. For the safety of our performers and the comfort of those around you, the use of any photography, video recording device or any electronic equipment is prohibited.

### Verandah Safety

Please do not leave any combustible materials on your balcony when not present in your stateroom for safety reasons.



# YOUTH ACTIVITY HIGHLIGHTS

## DINE & PLAY

A convenience for families dining at 8:15 p.m., our Youth Activities Counselors will be available at 9:15 p.m. at the entrance of Royal Court, Enchanted Garden and Animator's Palate dining rooms to bring registered children to join the fun in the Youth Activity areas.



**Deck 5, Midship (7-1440)**  
(3-12 years old) 9:00 a.m. - 12:00 mid

## LITTLE EINSTEIN'S ADVENTURE

1:15 p.m.

Your junior cruisers will have the time of their lives with this program inspired by their favorite show with fun activities guaranteed to make them feel like a little genius!

## PLUTO'S PAJAMA PARTY

9:15 p.m.

Bring the little ones in their pajamas but there will be anything but sleep when Pluto and friends host the ultimate slumber party!



**Deck 5, Midship (7-1445)**  
(3-12 years old) 9:00 a.m. - 12:00 mid

## DETECTIVE SCHOOL

3:15 p.m.

It's a crime how much fun you'll have as you go CSI Goofy Style.

## SUPER SLOPPY SCIENCE

7:15 p.m.

Join Professor Make-O-Mess in some of the most extreme experiments you will ever see in the world of Super Sloppy Science!



**Deck 13, Midship (7-9743)**  
(11-14 years old) 9:00 a.m. - 1:00 a.m.

## VIDEO SCAVENGER HUNT

1:45 p.m.

We have a list of items for you to collect at various locations throughout the ship, first person to collect all these items wins.

## BRAINS AND BRAWNS

6:30 p.m.

You will compete against each other to solve clues, take part in physical challenges, and reach the finish first.



**Entrance on Deck 4, Forward (7-9418)**  
(14-17 years old) 10:00 a.m. - 2:00 a.m.

## THAT'S HILARIOUS

7:15 p.m.

Ever wanted to show off your comedy skills? Then be a part of the cast for the crazy improv show "That's Hilarious" and put on a live show for your friends.

## BRING IT!

10:00 p.m.

How much do you think you know? Test your knowledge in our game show where you will be pitted head to head.

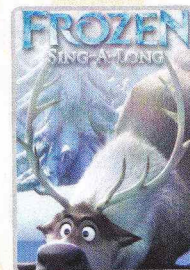
# BUENA VISTA THEATRE

Deck 4 & 5, Midship  
Today's Movies

SING-A-LONG

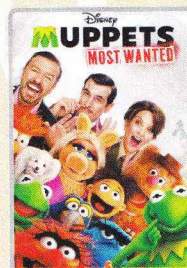


11:00 a.m.  
Duration: 1 hr 25 mins  
Rating: G

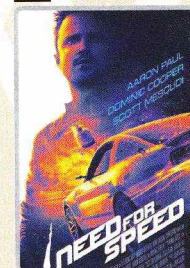


1:00 p.m.  
Duration: 1 hr 48 mins  
Rating: PG

DOLBY 3D



3:15 p.m. & 10:30 p.m.  
Duration: 1 hr 52 mins  
Rating: PG



5:30 p.m. & 8:00 p.m.  
Duration: 2 hrs 10 mins  
Rating: PG-13



Get ready for a jammin', slammin', splish splashin' good time at the new Disney Channel Poolside Jam Fest at Sea! Imagine all of your favorite Disney Channel music stars coming together for an afternoon of contests, great music, and hot videos all under the Caribbean sun!

**Deck stage,  
Deck 11, Midship,  
4:30 p.m.**



Bring the entire family and test your Disney knowledge in the high-tech interactive game show, Family Fusion.

**D Lounge,  
Deck 4, Midship,  
10:15 p.m.**

## YOUTH ACTIVITIES OPEN HOUSE

Open House is an opportunity for all to come and participate in a variety of exciting activities and free time in the Oceaneer Club, Oceaneer Lab, It's A Small World Nursery, Vibe and Edge throughout the cruise. During these times secured programming will still be offered in the other venue for those looking to check their children into care.

**Disney's Oceaneer Lab:** 9:00 a.m. - 10:00 a.m.  
**Vibe:** 11:00 a.m. - 12:00 p.m. & 6:45 p.m. - 8:30 p.m.  
**Edge:** 9:00 a.m. - 10:00 a.m. & 5:00 p.m. - 6:30 p.m.



 Symbol for activities that will be repeated during the cruise

**OH Youth Activities Open House**

Fold along the dotted lines and take me with you  
so you don't miss any of the fun!

Fold along the dotted lines and take me with you  
so you don't miss any of the fun!

↓ FOLD ↓

**IN THE SPOTLIGHT SERIES**

CREATE & INVENT SERIES

STORYBOOK SERIES



MONDAY, MAY 12, 2014 - COZUMEL

# BUENA VISTA THEATRE

Deck 4 & 5, Midship

STEREO DIGITAL

DOLBY 3D



11:00 a.m.  
Duration:  
1 hr 25 mins  
Rating: G



1:00 p.m.  
Duration:  
1 hr 48 mins  
Rating: PG



3:15 & 10:30 p.m.  
Duration:  
1 hr 52 mins  
Rating: PG



5:30 & 8:00 p.m.  
Duration:  
2 hrs 10 mins  
Rating: PG-13

## Character Appearances

### TINKER BELL

Lobby Atrium (V)  
4:15 p.m., 5:30 p.m.,  
7:30 p.m. & 9:30 p.m.

### JAKE - THE NEVERLAND PIRATE

Lobby Atrium (P) - 4:45 p.m.  
Deck 4, Balcony  
7:15 p.m. & 9:30 p.m.

### PINOCCCHIO

Preludes  
4:45 p.m. & 10:00 p.m.

### MICKEY MOUSE

Lobby Atrium (H)  
5:00 p.m., 7:15 p.m.  
& 10:00 p.m.

### STITCH

Preludes  
5:15 p.m. & 9:30 p.m.

### GENIE

Deck 4, Balcony - 5:15 p.m.  
Preludes - 7:30 p.m.  
Lobby Atrium (P) - 9:30 p.m.

### PETER PAN

Lobby Atrium (P) - 5:15 p.m.  
Deck 4, Balcony - 8:15 p.m.

### CINDERELLA

Lobby Atrium  
5:30 p.m. & 9:45 p.m.

### MINNIE MOUSE

Lobby Atrium (H)  
5:30 p.m. & 9:30 p.m.

### ALADDIN & PRINCESS JASMINE

Deck 4, Balcony - 5:45 p.m.  
Preludes - 8:00 p.m.  
Lobby Atrium (P)  
10:00 p.m.

### CAPTAIN HOOK & MR SMEE

Lobby Atrium (P) - 5:45 p.m.  
Deck 4, Balcony  
7:45 p.m. & 10:00 p.m.

### DONALD DUCK

Lobby Atrium (H)  
7:45 p.m.

For details of daily Disney character appearances, refer to the character line in your Navigator, Grid or the digital character board in the Lobby Atrium.  
(H) Hallway - (S) Starboard Side - (P) Port Side - (V) Vestibule  
Don't forget your Camera to capture those Magical Moments!

## YOUTH ACTIVITIES THEMED EXPERIENCES

### CLUBHOUSE SERIES

focuses on movement and games & includes large group games & movement-oriented activities.

### STORYBOOK SERIES

is designed with a strong connection to the Disney classic stories.

### JUMP UP! SERIES

focuses on children's stage presence with lots of activities and enthusiasm.

### IN THE SPOTLIGHT SERIES

focuses on children's stage presence with lots of activities and enthusiasm.

### CREATE & INVENT SERIES

will have a tactile focus allowing children to create and admire their work.

### SOLVE IT! SERIES

are less active, but will challenge children with problem solutions-based activities.

### YOUTH ACTIVITIES OPEN HOUSE

A non-secured program with activities for families, adults and children of all ages to enjoy together.

## SHIP DIRECTORY

YOUTH ACTIVITIES		POOLS & MORE	
DISNEY'S OCEANEER CLUB Deck 5, Mid	9:00 AM - 12:00 MID	* Children under 12 must have adult supervision in pool areas.	
DISNEY'S OCEANEER LAB Deck 5, Mid	9:00 AM - 12:00 MID	AQUADUCK Deck 12, Mid	9:00 AM - 11:00 PM
EDGE Deck 13, Mid	9:00 AM - 1:00 AM	AQUALAB Deck 12, Aft	10:00 AM - 6:00 PM
VIBE Deck 4, Fwd	10:00 AM - 2:00 AM	DONALD'S POOL Deck 11, Mid	9:00 AM - 10:00 PM
IT'S A SMALL WORLD NURSERY Deck 5, Mid	9:00 AM - 11:00 PM	MICKEY'S POOL Deck 11, Mid	6:00 AM - 11:30 PM
		MICKEY'S SLIDE Deck 11, Mid	9:00 AM - 6:00 PM
		NEMO'S REEF Deck 11, Mid	9:00 AM - 6:00 PM
		QUIET COVE POOL (18+) Deck 11, Fwd	6:00 AM - 12:00 MID
		SATELLITE FALLS Deck 13, Fwd	6:00 AM - 8:00 PM
RECREATION		GENERAL INFORMATION	
GOLF/SPORTS SIMULATORS Deck 13, Aft	9:00 AM - 6:00 PM	ARR-CADE Deck 4, Mid	5:00 PM - 10:00 PM
GOOFY GOLF Deck 13, Aft	8:00 AM - 10:00 PM	DISNEY VACATION CLUB Deck 3, Mid	24 HOURS
GOOFY'S SPORTS DECK Deck 13, Aft	8:00 AM - 6:00 PM	GUEST SERVICES Deck 1, Fwd	9:30 AM - 11:00 AM
MIDSHIP DETECTIVE AGENCY Deck 2 & 5, Mid	9:00 AM - 10:00 PM	MEDICAL HEALTH CENTER Deck 4, Mid	4:30 PM - 7:00 PM
PORT ADVENTURES DESK Deck 5, Mid	9:00 AM - 12:30 PM	ONBOARD SALES DESK Deck 4, Mid	8:00 AM - 9:30 AM
	7:00 PM - 8:30 PM	PORT & SHOPPING DESK Deck 4, Mid	9:30 AM - 10:30 AM
		PRELUDES Deck 3, Fwd	6:15 PM - 6:30 PM
			8:00 PM - 8:45 PM
			10:30 PM - 11:00 PM
		SENSES SPA AND SALON Deck 11, Fwd	8:00 AM - 10:00 PM
		SHUTTERS PHOTO GALLERY Deck 4, Mid	5:00 PM - 11:00 PM
		SHUTTERS DIGITAL Deck 4, Mid	24 HOURS
SHOPPING		BIBBIDI BOBBIDI BOUTIQUE Deck 5, Mid	9:00 AM - 9:00 PM
		MICKEY'S MAINSAIL Deck 3, Fwd	4:30 PM - 11:00 PM
		QUACKS Deck 11, Mid	
		SEA TREASURES Deck 3, Fwd	4:30 PM - 11:00 PM
		VISTA GALLERY Deck 4, Mid	5:30 PM - 10:00 PM
		WHITE CAPS Deck 3, Fwd	4:30 PM - 11:00 PM
		WHIZBITS & WHATZITS Deck 11, Mid	

**DINNER MENU**  
Animator's Palace Pacific Rim  
Enchanted Gardens Continental Market Cuisine  
Royal Court: French Cuisine  
Dining Times: 5:45 p.m. & 8:15 p.m.

**DRINK OF THE DAY**  
Yellow Bird (Alcoholic)  
Lava Smoothie (Non-Alcoholic)  
High: Partly Cloudy

**WEATHER FORECAST**  
Today: 84°F/29°C  
High: Sunny  
Tomorrow: 78°F/26°C  
High: Partly Cloudy

## Evening Attire: Cruise Casual

## DINING & LOUNGES

### BRACERANT

CABANAS CONTINENTAL	Deck 11, Aft	6:30 AM - 7:00 AM
CABANAS	Deck 11, Aft	7:00 AM - 10:45 AM
ENCHANTED GARDEN	Deck 2, Mid	7:30 AM - 10:00 AM
ROYAL COURT	Deck 3, Mid	8:00 AM - 9:30 AM

### LUNCH

CABANAS	Deck 11, Aft	12:00 PM - 2:15 PM
FILMORE'S FAVORITES	Deck 11, Mid	10:30 AM - 6:00 PM
LUIGI'S PIZZA	Deck 11, Mid	10:30 AM - 6:00 PM
ROYAL COURT	Deck 3, Mid	12:00 PM - 1:30 PM
TOW MATER'S GRILL	Deck 11, Mid	10:30 AM - 11:00 PM

### DINNER

ANIMATOR'S PALATE	Deck 3, Aft	5:45 PM & 8:15 PM
ENCHANTED GARDEN	Deck 2, Mid	5:45 PM & 8:15 PM
ROYAL COURT	Deck 3, Mid	5:45 PM & 8:15 PM
CABANAS TABLE SERVICE	Deck 11, Aft	6:30 PM - 8:30 PM
PALO (18+) <small>(Reservations Req. &amp; Now, Fri-Sat)</small>	Deck 12, Aft	6:00 PM - 8:30 PM
REMY (18+) <small>(Reservations Req. &amp; Now, Fri-Sat)</small>	Deck 12, Aft	6:00 PM - 8:30 PM

### LATE NIGHT SNACKS

LA PLAZZA (18+)	Deck 4, Aft	10:45 PM - 11:45 PM
LUIGI'S PIZZA	Deck 11, Mid	9:30 PM - 12:30 AM

### ADDED FEATURES

BEVERAGE STATION	Deck 11, Mid	11:00 AM - 11:00 PM
EYE SCREAM	Deck 11, Mid	11:00 AM - 11:00 PM
ROOM SERVICE	DIAL O	24 HOURS

## ENTERTAINMENT - LOUNGES - BARS

Adults must be 21 and older to consume alcoholic beverages.

BON VOYAGE	Deck 3, Mid	3:00 PM - 11:00 PM
COVE BAR (18+)	Deck 11, Fwd	11:00 AM - 11:00 PM
COVE CAFE (18+)	Deck 11, Fwd	7:00 AM - 12:00 MID
CURRENTS (18+)	Deck 13, Fwd	11:00 AM - 11:00 PM
D LOUNGE	Deck 4, Mid	SHOWTIMES
FROZONE TREATS	Deck 11, Mid	12:00 PM - 10:30 PM
LA PLAZZA (18+ AFTER 9:00 P.M.)	Deck 4, Aft	5:00 PM - 12:00 MID
MERIDIAN (18+)	Deck 12, Aft	2:00 PM - 12:00 MID
O'GILLS PUB (18+ AFTER 9:00 P.M.)	Deck 4, Aft	4:00 PM - 12:00 MID
Ooh LA LA (18+)	Deck 4, Aft	5:00 PM - 12:00 MID
OUTLOOK	Deck 14, Mid	SUNSET TIMES
SKYLINE (18+)	Deck 4, Aft	5:00 PM - 12:30 AM
THE TUBE (18+ AFTER 9:00 P.M.)	Deck 4, Aft	9:30 PM - 2:00 AM
VISTA CAFE	Deck 4, Mid	7:00 AM - 10:30 PM
WAVES	Deck 12, Aft	2:00 PM - 6:00 PM

Public Health Advisory: Consuming raw or under-cooked meats, poultry, seafood, shellfish, or eggs may increase your risk for food borne illness, especially if you have certain medical condition.



## IMPORTANT INFORMATION

Please check your tour tickets for meeting times and locations.  
Visit the Port Adventures Desk, Deck 5, Midship, for any questions.

All Ashore: Approx. 8:30 a.m.  
All Aboard: 3:45 p.m.

## SHIP'S AGENT IN COZUMEL

ACS (Agencia Consignataria del Sureste), Calle 6 Norte No. 14 X  
10 Y 15 Ave., Cozumel, Q. Roo.,  
Mexico 77660. Tel. 521-987-873-9490

## IMPORTANT NUMBERS

Fire/Security: 7-3001  
Medical Emergency: 7-3000  
Health Center: 7-1923