

PERSONAL NAVIGATOR

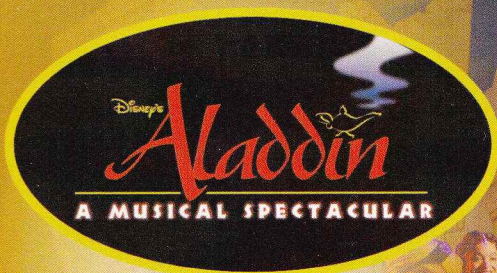


SUNDAY, MAY 11, 2014

Sunrise: 6:40 a.m. Sunset: 8:09 p.m.
Evening Attire: Formal

Today: 82°F/28°C High: Partly Sunny
Tomorrow: 84°F/29°C High: Sunny

DAY AT SEA



New to Disney Cruise Line.
"Disney's Aladdin - A Musical Spectacular"

A fast-paced, musical comedy based on the beloved animated film.

Aladdin, the "street rat" of Agrabah, meets a wise-cracking Genie, battles the evil Jafar, and falls in love with the beautiful and spirited Princess Jasmine. Disney storytelling at its best.

WALT DISNEY THEATRE

Deck 3 & 4 Forward
6:15 p.m. & 8:30 p.m.



As a courtesy to all Guests, we kindly advise that the saving of seats is **not** permitted in the Walt Disney Theatre.



Assistance available at the entrance to the Walt Disney Theatre 30 minutes prior to show time.

HAPPY MOTHER'S DAY

Disney Fun Facts

Tonnage: 130,000 Gross Tons

Height: 216 Feet

Length: 1115 Feet

Important Dates

Name Announcement: March 10, 2009

Steel Cutting: March 16, 2010

Keel Laying: February 11, 2011

Delivery: February 9, 2012

Almost four football fields in length, the Disney Fantasy is longer than the height of the Eiffel Tower in Paris (1,063 feet). She is also longer than the height of New York City's famous Chrysler building (1,047 feet).

Disney Fantasy's Whistle

Will be played after today's noon announcement

The Disney Fantasy's whistle, a prominent element of the "Sailing Away" deck party at the start of the cruise, is quite the musical talent. It's able to perform not just the first musical line of "When You Wish Upon a Star" but also the second line of the song ("makes no difference who you are") plus several measures of "Yo Ho (A Pirate's Life for Me)," "It's a Small World," "Be Our Guest," "Hi Diddle Dee Dee (An Actor's Life for Me)" and "A Dream is a Wish."



CAPTAIN'S RECEPTION

Enjoy live music and a cocktail while meeting some of the ship's officers.

Lobby Atrium, Deck 3, Midship,
5:00 & 7:30 p.m.

Enjoy an exclusive photo opportunity with Commodore Tom at

5:15 & 7:30 p.m., Lobby Atrium

Don't Miss:

Walking Ship Tour

Meet at Preludes, Deck 3, Forward - 9:15 a.m. & 11:30 a.m.
Enjoy the beauty of the Disney Fantasy with your Cruise Staff in this guided tour.

Art of The Theme Show Tour (18+)

Pre-Book at Guest Services, Deck 3, Midship
Join us on a guided ship tour and discover the key ingredients that make the Disney Fantasy cruise ship one-of-a-kind.

Family Magic Show: Shawn Farquhar

Walt Disney Theatre, Deck 3 & 4, Forward - 2:00 p.m.
(Doors Open At 1:30 p.m.)
Featuring The Comedy and Magic of Shawn Farquhar, as he entertains the entire family in this fun-filled show.

Club D Dance Party

D Lounge, Deck 4, Midship - 7:30 p.m. & 9:45 p.m.
Join your snazzy Cruise Staff as we turn D-Lounge into an electrifying family nightclub featuring appearances from some of your favorite Disney Characters. Club D, where everyone is a V.I.P!



TIME ZONE CHANGE

Remember to turn your clocks **BACK 1 HOUR** upon retiring on **SUNDAY** evening, or first thing **MONDAY** morning.

DINNER MENU

Animator's Palate: Pacific Rim Cuisine
Enchanted Garden: Continental Market Cuisine
Royal Court: French Cuisine

DRINK OF THE DAY

Bahama Mama (Alcoholic)
Coco Bali (Non Alcoholic)

IMPORTANT NUMBERS

Fire/Security: 7-3001
Medical Emergency: 7-3000
Health Center: 7-1923



SENSES SPA FITNESS CLASSES & SEMINARS

Yoga - Donald's Pool - 7:00 a.m.
Body Sculpt Boot Camp (Nom. Fee) - Senses Fitness Center - 9:00 a.m.
Secrets to a Flatter Stomach - Senses Spa & Salon - 11:00 a.m.
Introduction to Acupuncture - Senses Fitness Center - 12:15 p.m.
Back Pain Solutions - Senses Spa & Salon - 1:00 p.m.
Group Cycling - Senses Fitness Center - 4:00 p.m.
Complimentary Footprint Analysis - Senses Spa & Salon - 5:00 p.m.
Fitness Frenzy (13-17, Nom. Fee) - Senses Fitness Center - 7:00 p.m.

TASTING CLASSES

Champagne Tasting (21+) - Ooh La La - 12:15 p.m.
Stem to Stern Wine Tasting (21+) - Ooh La La - 1:45 p.m.
Rum Tasting (21+) - Meridian - 2:00 p.m.
Martini Tasting (21+) - Meridian - 4:00 p.m.
Tequila & Margarita Tasting (21+) - Ooh La La - 4:45 p.m.
Whiskey Tasting (21+) - Cove Cafe - 10:00 p.m.
Cognac Tasting (21+) - Meridian - 10:30 p.m.
Please make reservations for tastings at Guest Services for a nominal fee.
Tasting Seminars are only for Guests 21 and Older.

CLUB 18*21 - LUNCH

Royal Court, Deck 3, Midship - 12:15 p.m.

CLUB
18*21

CLUB 18*21 - MINI GOLF

Goofy Golf, Deck 13, Aft - 4:00 p.m.

CLUB 18*21 - MIXER

The Tube, Deck 4, Aft - 10:00 p.m.



ESPN DREAM TEAM DRAFT DAY - FOOTBALL

O'Gills Pub, Deck 4, Aft - 11:15 a.m.

Join the "Commissioner" and engage in this interactive fantasy football draft unlike anything you've ever seen! Can YOU draft the greatest football team of All-Time?

THE QUEST

The Tube, Deck 4, Aft - 10:15 p.m.

Enjoy the wildest and wackiest scavenger team event on the seven seas!

70'S REMIX WITH CLUB DJ DAY-NA

The Tube, Deck 4, Aft - 11:45 p.m.

Join Club DJ Day-na, as she takes you back and remixes 70's hits to keep you dancing.



WAKE UP WITH DISNEY JUNIOR

D Lounge, Deck 4, Midship - 8:30 a.m.

What happens when you experience unlimited fun with your favorite Disney Junior shows? You get an exciting dance party designed especially for preschoolers ages seven and under.



DISNEY ANIMATION: CREATING A CHARACTER

D Lounge, Deck 4, Midship - 9:45 a.m. & 12:45 p.m.

Go behind the scenes at Walt Disney Animation Studios as Walt Disney himself talks about his most famous characters, then learn the basic techniques of drawing Mickey and Donald in this fun and interesting enrichment program.



FREE CARD JACKPOT BINGO

D Lounge, Deck 4, Midship - 11:00 a.m.

Four CASH prizes will be won, raffle prizes and a free card for everyone in attendance for game number three. Must play to win! Pre Sales start 15 minutes prior to game.



DISNEY VACATION CLUB GROUP PREVIEW

The Tube, Deck 4, Aft - 12:00 p.m.

Want to learn more about taking magical vacations year after year? Please see a Disney Vacation Club representative on Deck 4, Midship, or call 7-2805 from your stateroom phone for more information about our interactive group presentation.



JACK-JACK'S INCREDIBLE DIAPER DASH

Lobby Atrium, Deck 3, Midship - 12:15 p.m.

Calling all baby Cruisers! It's time to take to the mat to see who's the fastest crawler of the seven seas! Register your baby 15 minutes prior to the big race.



PORT AND SHOPPING SHOW

Buena Vista Theatre Deck 4 & 5, Midship - 1:45 p.m.

Join your Port and Shopping Guides to learn about the incredible Tax & duty free shopping ashore this cruise! Free charm bracelet for all in attendance and a raffle to win a Diamond Pendant!

ANYONE CAN COOK - APPLE STRUDEL

D Lounge, Deck 4, Midship - 2:15 p.m.

From our galley to yours. Join our chefs as they show you how to prepare delicious dishes. Today's Menu - Apple Strudel

DIAMOND JACKPOT BINGO

D Lounge, Deck 4, Midship - 4:15 p.m.

Join us for 4 cash prize games and your chance to win a Diamond Pendant! Everyone attending will also receive a voucher to collect a free Diamonds International charm bracelet! Pre Sales start 15 minutes prior to game.



PLAYHOUSE D LOUNGE

D Lounge, Deck 4, Midship - 5:15 p.m.

Calling our youngest of cruisers! Here is a special playtime that is just for you. Come meet new friends; and join in on the fun as your Cruise Staff team takes you through interactive activities made just for you!

MORE TO ENJOY WHILE ONBOARD

PORT & SHOPPING INFORMATION

Join your Shopping Guides Todd & Nicole to find out about shopping in the Caribbean at the Port Shopping Show, 1:45 p.m. in the Buena Vista Theatre, Deck 4, Forward. FREE Charm Bracelet for all in attendance. Don't miss the Gemstone Seminar in La Piazza, Deck 4 Aft at 4:15 p.m., and learn insider tips on shopping for gemstones in the Caribbean. Free Gemstone Earrings for all in attendance!

PLAN YOUR NEXT GETAWAY NOW

Our 3 and 4 night Bahamian Cruises are a perfect way to get an instant tropical recharge! Departing from Miami or Port Canaveral, most Bahamian cruises include a stop at Disney's private island, Castaway Cay. Visit the Onboard Sales Desk today and ask about our special onboard booking offer.

DISNEY VACATION CLUB® GROUP PREVIEW

Want to learn more about taking magical vacations year after year? Please see a Disney Vacation Club representative on Deck 4, Midship, or call 7-2805 from your stateroom phone for more information about our interactive group presentation.

ONBOARD AIRLINE CHECK IN

If you would like to have your boarding passes printed for you onboard and have your luggage taken to the airport for you, register before Wednesday. If you have a Disney Cruise Line airport transfer to Orlando International Airport and fly with one of the participating airlines, stop at Guest Services, Deck 3, Midship to register.

ARR-CADE

Where can you be a ninja, play the guitar like a rock star, race a car down the streets of Tokyo and along the way WIN some great prizes? Arr-CADE located Deck 11, Aft where the pirates play.

runDisney®: CASTAWAY CAY 5K REGISTRATION (10+)

Sign up today for the runDisney: Castaway Cay 5K! Please visit the Port Adventures Desk or the Guest Services Desk to register at anytime prior to our arrival at Disney's Castaway Cay. Please note that runners must be 10 years of age or older to participate.

MIDSHIP DETECTIVE AGENCY

The puppies from 101 Dalmatians have gone missing! Use your special detective "badge" to track down the puppies and catch the villain who took them. Decks 2 & 5, Midship.



The best way to explore our ports of call is through the eyes of a Port Adventure. Be adventurous and climb up Dunn's River Falls or explore the Green Grotto Caves in Falmouth. Why not swim with stingrays in Grand Cayman or explore the ruins in Cozumel. Stop by the Port Adventures Desk, Deck 5, Midship.

SHOPPING

FRAGRANCE OF THE DAY

Stop by White Caps to test our selected fragrance today! Deck 3, Forward.

NEW DOONEY & BOURKE ONBOARD

Loved for their fine leather and unique designs, Dooney & Bourke creates styles that are sure to inspire. Visit White Caps and check out the new Dooney & Bourke handbags designed especially for Disney Cruise Line®. Deck 3, Forward.

HIDDEN CHARACTERS IN THOMAS KINKADE ART!

Known as the "Painter of Light," Thomas Kinkade is one Disney's most celebrated artists having created an array of enchanting artwork. Stop by the Vista Gallery today to view his unique collection of paintings featuring some of your favorite Disney characters! Also, take the time to try and find all of the hidden Disney characters scattered throughout his paintings. Are you up to the challenge? Deck 4, Midship.

STYLISH WATCHES ONBOARD

Whether you need a tool for strict timekeeping or a fun fashion accessory, visit White Caps and browse the wide selection of stylish watches available including popular brands such as Ernst Benz, Michele, and Shinola. Deck 3, Forward.

BIBBIDI BOBBIDI BOUTIQUE

Young Princesses and Princes can get ready for a formal evening with a makeover at the Bibbidi Bobbidi Boutique. Make your reservations by visiting Bibbidi Bobbidi Boutique, Deck 5, Midship or dialing extension 7-9438. Limited space available.

SPA SPECIAL

IONITHERMY

Would you like to lose between 1 – 8 inches?
Speed up your metabolism?
Firm your muscle tone?
Improve appearance of cellulite?
If so, then Ionithermy is the best treatment for you!
50 min. \$155

GUESS THE CARAT!

Guess the carat weight of one of our exquisite Sophia Fiori diamond rings. Whoever guesses closest wins a 5 carat midnight sapphire and a pair of midnight black sapphire studs! 9:30 a.m. – 7:00 p.m. Winners announced and raffle at 7:30 p.m. Must be present to win! White Caps, Deck 3, Forward. This offer is not affiliated with Disney Cruise Line®.

FORMAL PORTRAITS TONIGHT!

Now that the family is dressed up and ready to enjoy the evening, capture the memories in your formal attire by visiting our professional portrait studios located in the Lobby Atrium, Deck 3, Midship.

5:00 p.m. – 6:00 p.m.
7:15 p.m. – 8:30 p.m.
9:30 p.m. – 10:30 p.m.

**Please note that photos are available for viewing on our interactive photo kiosks approximately five hours after being taken and are only available for purchase during this cruise.*

DISNEY 05-11-2014

IMPORTANT INFORMATION

Security Notice

All Guests (including children) who wish to disembark the ship are required to present their Key to the World card at the gangway. A photo ID is also required for those Guests who are 18 years of age or older. Guests under the age of 18 are required to have a parent, guardian or other responsible adult sign an authorization form at the Guest Service Desk if they wish to go ashore unaccompanied or with any adult from another stateroom.

Sunscreen/Insect Repellent Advisory

Use sunscreen first and protect against mosquito borne illnesses by applying insect repellent on top of sunscreen when going ashore.

Cold and Flu Reminder

Please wash hands frequently and thoroughly, particularly before meals. Contact the Health Center by dialing 7-1923, should anyone in your party become ill.

Corridor Quiet Hours

As a courtesy to all our Guests, please recognize quiet hallway hours from 10:00 p.m. til 8:00 a.m.

Inclement Weather

For the safety of all Guests, outdoor events may be changed due to unforeseen weather conditions.

Environmental Message

With Disney's commitment to the Environment, please refrain from throwing anything over the Ship's side. Thank you!

No Reserved Seats Policy

As a courtesy to all our Guests, we kindly advise that the saving of seats is not permitted in the Walt Disney Theatre, and the saving of the sun loungers is not permitted on Deck 11, 12, and 13. Items left unattended will be returned to lost and found at Guest Services, Deck 3 Midship.

Smoking

For the comfort of our guests, the following areas are designated as smoking areas:

- Deck 13, forward, port side by Currents
- Deck 12, aft, port side outdoor area that is accessible through the Meridian Lounge
- Deck 4, aft, port side from 6:00 p.m. to 6:00 a.m. only (all of Deck 4 is non-smoking from 6:00 a.m. to 6:00 p.m.) Smoking is prohibited inside all guest staterooms and on stateroom verandahs. Guest found smoking in their staterooms or on their verandahs will be charged a \$250 stateroom recovery fee.

Walt Disney Theatre

Theatrical performances may use artificial fog, strobe lights, pyrotechnics and other special effects. For the safety of our performers and the comfort of those around you, the use of any photography, video recording device or any electronic equipment is prohibited.

Verandah Safety

Please do not leave any combustible materials on your balcony when not present in your stateroom for safety reasons.

YOUTH ACTIVITIES HIGHLIGHTS

DINE & PLAY

A convenience for families dining at 8:15 p.m., our Youth Activities Counselors will be available at 9:15 p.m. at the entrance of Royal Court, Enchanted Garden and Animator's Palate dining rooms to bring registered children to join the fun in the Youth Activity areas.



Deck 5, Midship (7-5864) 9:00 a.m. - 11:30 p.m.

OPEN HOUSE

8:00 a.m. - 9:00 a.m.

Your chance to see our toddler space, It's A Small World Nursery.



Deck 5, Midship (7-1440)

(3-12 years old) 9:00 a.m. - 12:00 mid

ALOHA LUAU

10:30 a.m.

It's party time, Hawaiian style! Come join us for a Luau experience and learn how to dance like Lilo & Stitch.

TOY STORY BOOT CAMP

3:30 p.m.

Join Corporal Green in our own version of boot camp as we learn how to have fun - The Toy Story way!



Deck 5, Midship (7-1445)

(3-12 years old) 9:00 a.m. - 1:00 a.m.

STITCH'S ADVENTURE SQUAD

9:30 a.m.

Stitch, everyone's favorite alien, is making an appearance to share some of his mischievous games and activities.

DISNEY ANIMATION: CREATING A CHARACTER

7:30 p.m.

Go behind the scenes at Walt Disney Animation Studios as Walt Disney himself talks about his most famous characters, then learn the basic techniques of drawing Mickey and Donald in this fun and interesting enrichment program.



Deck 13, Midship (7-9743)

(11-14 years old)

9:00 a.m. - 1:00 a.m.

MAGIC SHOW

11:30 a.m.

The Magnificent Magician will demonstrate to you some of the best known magic tricks on the sea.

THAT'S HILARIOUS

9:45 p.m.

Ever wanted to show off your comedy skills? Then be a part of the cast for the crazy improv show "That's Hilarious" and put on a live show for your friends.



Entrance on Deck 4, Forward (7-9418)

(14-17 years old)

9:00 a.m. - 2:00 a.m.

ZOMBIFIED

1:15 p.m.

A big movie producer is looking for zombies to help him film the finale to his latest masterpiece, Zombified.

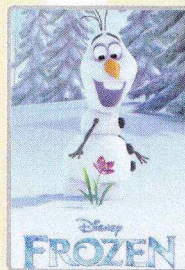
GENDER WARS

10:15 p.m.

Join us as we find out who really are the king or queen of the castle.

BUENA VISTA THEATRE

Deck 4 & 5, Midship
Today's Movies



8:00 a.m.
Duration: 1 hr 48 mins
Rating: PG

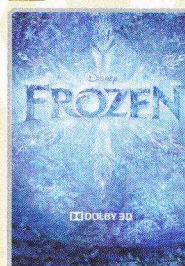


10:15 a.m. & 10:30 p.m.
Duration: 2 hrs 5 mins
Rating: PG-13

DOLBY 3D



3:30 p.m.
Duration: 1 hr 25 mins
Rating: G



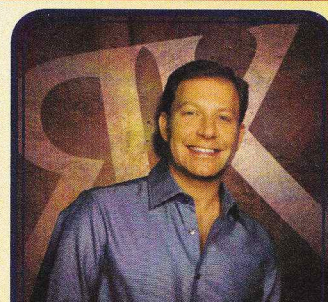
5:30 p.m. & 8:15 p.m.
Duration: 1 hr 48 mins
Rating: PG



FAMILY VARIETY ACT

Featuring The Comedy and Magic of Shawn Farquhar, as he entertains the entire family in this fun-filled show.

**Walt Disney Theatre,
Deck 3 & 4, Forward,
2:00 p.m.
(Doors Open At 1:30 p.m.)**



ADULT VARIETY ACT

Star of the Disney Channel Show SNAP, Hypnotist Ricky Kalmon brings you the only adult exclusive comedy show where the audience becomes the stars!

**Walt Disney Theatre (18+),
Deck 3 & 4, Forward,
11:00 p.m.
(Doors Open At 10:45 p.m.)**

YOUTH ACTIVITIES OPEN HOUSE

Open House is an opportunity for all to come and participate in a variety of exciting activities and free time in the Oceaneer Club, Oceaneer Lab, It's A Small World Nursery, Vibe and Edge throughout the cruise. During these times secured programming will still be offered in the other venue for those looking to check their children into care.

**Vibe: 9:00 a.m. - 10:30 a.m. & 6:30 p.m. - 8:30 p.m.
Edge: 9:00 a.m. - 10:00 a.m. & 5:00 p.m. - 6:30 p.m.
Disney's Oceaneer Club: 9:00 a.m. - 10:00 a.m.**

Symbol for activities that will be repeated during the cruise

Youth Activities Open House

ing the dotted lines and take me with you
so you don't miss any of the fun!

— FOLD —

IN THE SPOTLIGHT
SOLVE IT! SERIES

UMP-LPI SERIES
CREATE & INVENT SERIES

CLUBHOUSE SERIES

SUNDAY, MAY 11, 2014 - DAY AT SEA

BUENA VISTA THEATRE

Deck 4 & 5, Midship

DOLBY 3D



8:00 a.m.
Duration:
1 hr 48 mins
Rating: PG



10:15 am & 10:30 p.m.
Duration:
2 hrs 5 mins
Rating: PG-13



3:30 p.m.
Duration:
1 hr 25 mins
Rating: G



5:30 & 8:15 p.m.
Duration:
1 hr 48 mins
Rating: PG

Character Appearances

DAISY DUCK

Deck 4, Balcony - 9:15 a.m.
Preludes - 4:45 p.m.

PRINCESS GATHERING

Lobby Atrium - 10:00 a.m.

PRINCESS SOFIA

Deck 4, Balcony - 10:15 a.m.
& 11:30 a.m.

PRINCESS MINNIE

Deck 4, Balcony - 11:00 a.m.

STITCH

Deck 4, Balcony - 12:45 p.m.

BUZZ LIGHTYEAR

Lobby Atrium (V)
12:45 p.m. & 2:15 p.m.

CHIP & DALE

Deck 4, Balcony
1:15 p.m. & 4:30 p.m.

WOODY

Lobby Atrium (V)
1:30 p.m. & 2:45 p.m.

MICKEY MOUSE

Deck 4, Balcony
1:45 p.m., 2:45 p.m.,
5:30 p.m., 7:45 p.m.
& 9:45 p.m.

MINNIE MOUSE

Deck 4, Balcony
2:15 p.m., 5:00 p.m.,
7:15 p.m. & 10:15 p.m.
Preludes
4:15 p.m., 5:45 p.m.
& 9:30 p.m.

GOOFLY

Preludes - 5:15 p.m.

DONALD DUCK

Deck 4, Balcony
6:00 p.m. & 8:15 p.m.

CINDERELLA

Preludes - 7:15 p.m.

ARIEL

Preludes - 7:45 p.m.

YOUTH ACTIVITIES THEMED EXPERIENCES

CLUBHOUSE SERIES
focuses on movement and features
content which appeals to younger
children.

JUMP UP! SERIES
includes large group games &
movement-oriented activities.

IN THE SPOTLIGHT SERIES
focuses on children's stage presence
with lots of activities and enthusiasm.

STORYBOOK SERIES
is designed with a strong connection
to the Disney classic stories.

CREATE & INVENT SERIES
will have a tactile focus allowing children
to create and admire their work.

SOLVE IT! SERIES
are less active, but will challenge
children with problem/solutions-based
activities.

YOUTH ACTIVITIES OPEN HOUSE

A non-secured program with activities for families, adults and children of all ages to enjoy together.

SHIP DIRECTORY

YOUTH ACTIVITIES

DISNEY'S OCEANEER CLUB	DECK 5, MID	9:00 AM - 12:00 MID
DISNEY'S OCEANEER LAB	DECK 5, MID	9:00 AM - 1:00 AM
EDGE	DECK 13, MID	9:00 AM - 1:00 AM
VIBE	DECK 4, FWD	9:00 AM - 2:00 AM
IT'S A SMALL WORLD NURSERY	DECK 5, MID	9:00 AM - 11:30 PM

POOLS & MORE

* Children under 12 must have adult supervision in pool areas.

AQUADUCK	DECK 12, MID	9:00 AM - 11:00 PM
AQUALAB	DECK 12, AFT	10:00 AM - 6:00 PM
DONALD'S POOL	DECK 11, MID	9:00 AM - 6:00 PM 8:00 PM - 10:00 PM
MICKEY'S POOL	DECK 11, MID	6:00 AM - 11:30 PM
MICKEY'S SLIDE	DECK 11, MID	9:00 AM - 6:00 PM
NEMO'S REEF	DECK 11, MID	9:00 AM - 6:00 PM
QUIET COVE POOL (18+)	DECK 11, FWD	6:00 AM - 12:00 MID
SATELLITE FALLS	DECK 13, FWD	6:00 AM - 8:00 PM

RECREATION

GOLF/SPORTS SIMULATORS	DECK 13, AFT	9:00 AM - 6:00 PM
GOOFLY GOLF	DECK 13, AFT	8:00 AM - 10:00 PM
GOOFLY'S SPORTS DECK	DECK 13, AFT	8:00 AM - 6:00 PM
MIDSHIP DETECTIVE AGENCY	DECKS 2 & 5, MID	9:00 AM - 9:00 PM
PORT ADVENTURES DESK	DECK 5, MID	9:00 AM - 5:00 PM 7:00 PM - 8:30 PM
SENSES FITNESS CENTER (18+)	DECK 11, FWD	6:30 AM - 10:00 PM

GENERAL INFORMATION

ARR-CADE	DECK 11, AFT	24 HOURS
DISNEY VACATION CLUB	DECK 4, MID	9:00 AM - 11:30 AM 2:30 PM - 10:00 PM
GUEST SERVICES	DECK 3, MID	24 HOURS
MEDICAL HEALTH CENTER	DECK 1, FWD	9:30 AM - 11:00 AM 4:30 PM - 7:00 PM
ONBOARD SALES DESK	DECK 4, MID	10:00 AM - 12:00 PM 2:00 PM - 6:00 PM 7:30 PM - 8:30 PM
PORT & SHOPPING DESK	DECK 4, MID	7:30 PM - 8:30 PM
PRELUDES	DECK 3, FWD	2:30 PM - 3:15 PM 5:45 PM - 6:30 PM 8:00 PM - 8:45 PM
SENSES SPA AND SALON	DECK 11, FWD	8:00 AM - 10:00 PM
SHUTTERS PHOTO GALLERY	DECK 4, MID	9:30 AM - 12:00 PM 7:00 PM - 11:00 PM
SHUTTERS DIGITAL	DECK 4, MID	24 HOURS

SHOPPING

BIBBIDI BOBBIDI BOUTIQUE	DECK 5, MID	9:00 AM - 9:00 PM
MICKEY'S MAINSAIL	DECK 3, FWD	9:30 AM - 11:00 PM
QUACKS	DECK 11, MID	10:00 AM - 4:00 PM
SEA TREASURES	DECK 3, FWD	9:30 AM - 11:00 PM
VISTA GALLERY	DECK 4, MID	10:00 AM - 10:00 PM
WHITE CAPS	DECK 3, FWD	9:30 AM - 11:00 PM
WHOZITS & WHATZITS	DECK 11, MID	10:00 AM - 4:00 PM

DINNER MENU

Animator's Palate: Pacific Rim Cuisine
Enchanted Garden: Continental Market Cuisine
Royal Court: French Cuisine
Dining Times: 5:45 p.m. & 8:15 p.m.

DRINK OF THE DAY

Bahama Mama
(Alcoholic)
Coco Bali
(Non Alcoholic)

WEATHER FORECAST

Today: 82°F/28°C
High: Partly Sunny
Tomorrow: 84°F/29°C
High: Sunny

Evening Attire: Formal

DINING & LOUNGES

BREAKFAST

CABANAS CONTINENTAL	DECK 11, AFT	7:00 AM - 7:30 AM
CABANAS	DECK 11, AFT	7:30 AM - 11:30 AM
ENCHANTED GARDEN	DECK 2, MID	8:30 AM - 10:45 AM
ROYAL COURT	DECK 3, MID	8:00 AM - 9:30 AM

LUNCH

CABANAS	DECK 11, AFT	11:30 AM - 2:00 PM
FILLMORE'S FAVORITES	DECK 11, MID	11:00 AM - 6:00 PM
LUIGI'S PIZZA	DECK 11, MID	11:00 AM - 6:00 PM
ROYAL COURT	DECK 3, MID	12:00 PM - 1:30 PM
TOW MATER'S GRILL	DECK 11, MID	11:00 AM - 11:00 PM

DINNER

ANIMATOR'S PALATE	DECK 3, AFT	5:45 PM & 8:15 PM
ENCHANTED GARDEN	DECK 2, MID	5:45 PM & 8:15 PM
ROYAL COURT	DECK 3, MID	5:45 PM & 8:15 PM
CABANAS TABLE SERVICE	DECK 11, AFT	6:30 PM - 8:30 PM
PALO (18+) (RESERVATIONS REQUIRED & NON-FEE APPLIES)	DECK 12, AFT	6:00 PM - 8:30 PM
REMY (18+) (RESERVATIONS REQUIRED & NON-FEE APPLIES)	DECK 12, AFT	6:00 PM - 8:30 PM

LATE NIGHT SNACKS

LA PIAZZA (18+)	DECK 4, AFT	10:45 PM - 11:45 PM
LUIGI'S PIZZA	DECK 11, MID	9:30 PM - 12:30 AM

ADDED FEATURES

BEVERAGE STATION	DECK 11, MID	24 HOURS
EYE SCREAM	DECK 11, MID	11:00 AM - 11:00 PM
ROOM SERVICE	DIAL 0	24 HOURS

ENTERTAINMENT - LOUNGES - BARS

Adults must be 21 and older to consume alcoholic beverages.

BON VOYAGE	DECK 3, MID	9:00 AM - 11:00 PM
COVE BAR (18+)	DECK 11, FWD	10:00 AM - 11:00 PM
COVE CAFE (18+)	DECK 11, FWD	7:00 AM - 12:00 MID
CURRENTS (18+)	DECK 13, FWD	10:00 AM - 11:00 PM
D LOUNGE	DECK 4, MID	SHOWTIMES
FROZONE TREATS	DECK 11, MID	10:00 AM - 10:30 PM
LA PIAZZA (18+ AFTER 9:00 P.M.)	DECK 4, AFT	12:00 PM - 12:00 MID
MERIDIAN (18+)	DECK 12, AFT	10:00 AM - 12:00 MID
O'GILLS PUB (18+ AFTER 9:00 P.M.)	DECK 4, AFT	12:00 PM - 12:00 MID
OOH LA LA (18+)	DECK 4, AFT	5:30 PM - 12:00 MID
OUTLOOK	DECK 14, MID	
SKYLINE (18+)	DECK 4, AFT	5:30 PM - 12:30 PM
THE TUBE (18+ AFTER 9:00 P.M.)	DECK 4, AFT	9:30 PM - 2:00 AM
VISTA CAFE	DECK 4, MID	7:00 AM - 11:00 PM
WAVES	DECK 12, AFT	10:00 AM - 6:00 PM

Public Health Advisory: Consuming raw or under-cooked meats, poultry, seafood, shellfish, or eggs may increase your risk for food borne illness, especially if you have certain medical condition



TIME ZONE CHANGE

Remember to turn your clocks **BACK 1 HOUR**
upon retiring on **SUNDAY** evening, or first
thing **MONDAY** morning.

IMPORTANT NUMBERS

Fire/Security: 7-3001
Medical Emergency: 7-3000
Health Center: 7-1923

(H) Hallway - (S) Starboard Side - (P) Port Side - (V) Vestibule

For details of daily Disney character appearances, refer to the character line on
your Navigator Grid, or the digital character board in the Lobby Atrium.

DISNEY